

System z Premier Executive Event



Smart Steps for Increasing Business Agility with WebSphere

Yvonne Perkins

Vice President

Enterprise Platform Software

IBM Software Group



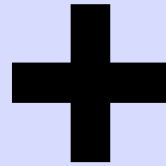
Disclaimer

Information regarding potential future products is intended to outline our general product direction and it should not be relied on in making a purchasing decision. The information mentioned regarding potential future products is not a commitment, promise, or legal obligation to deliver any material, code or functionality. Information about potential future products may not be incorporated into any contract. The development, release, and timing of any future features or functionality described for our products remains at our sole discretion.

To Survive... To Thrive... To Succeed

Business Agility

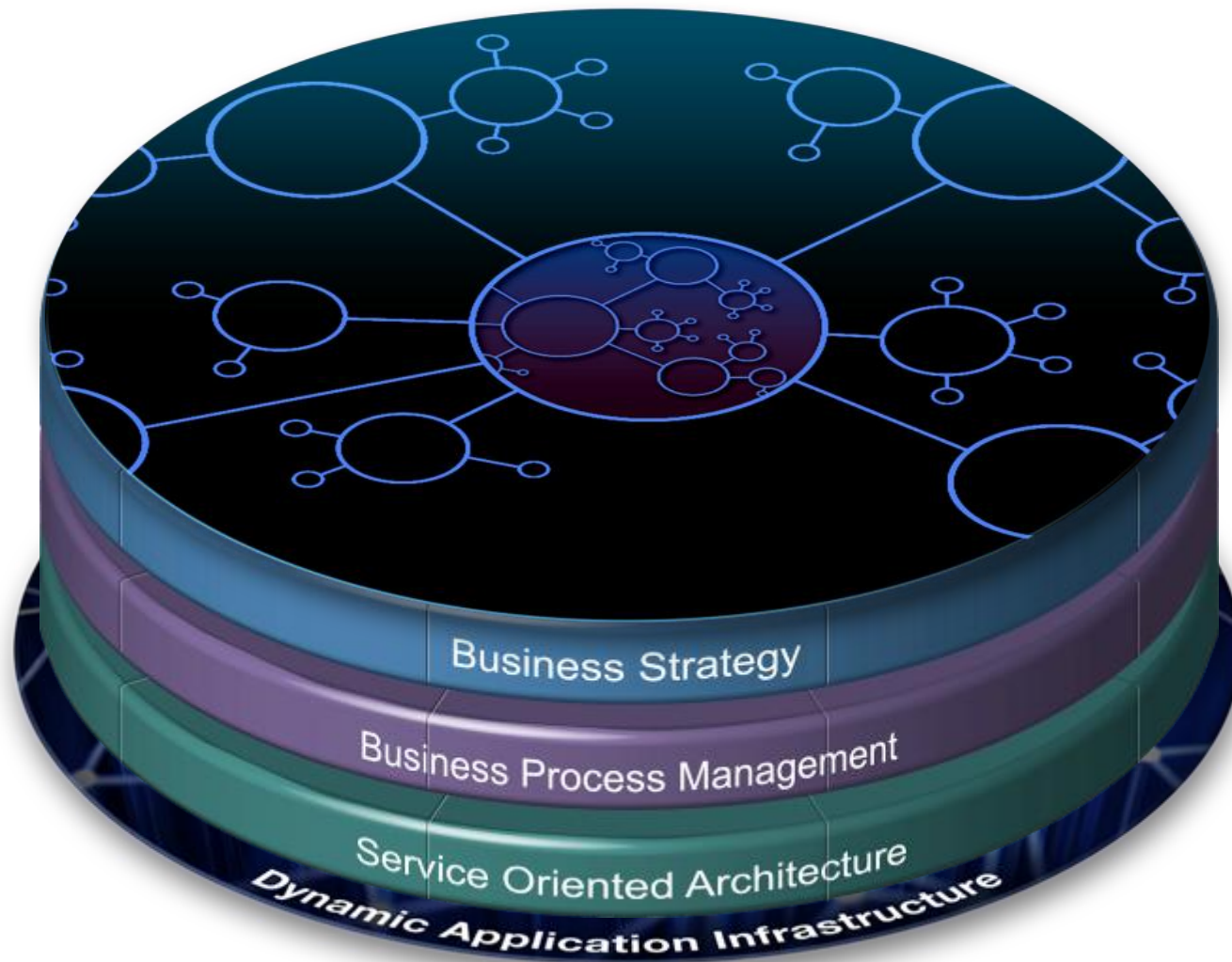
to take advantage
of new revenue
opportunities and
address competitive
threats



Cost Optimization

to slash operational and
maintenance expense
and maximize efficiency
necessary for all
economic climates

A dynamic network requires business agility...



...supported by a Dynamic Application Infrastructure

Three ways to drive agility while optimizing costs

Business Needs

“Ensure applications consistently deliver on business needs in all situations”



Common Buying Scenarios

**Dynamic
Application
Infrastructure**

“Adapt and respond to dynamic business situations”



**SOA
Connectivity and
Integration**

“Quickly respond to changing customer expectations and business demands”



**Business Process
Management**

The power of a Dynamic Application Infrastructure



Modernize Applications



Expand client offerings using existing business data with Web 2.0

Execute High Volume Transactions



Reduce business risks with highly available, secure applications

Capitalize on dynamic situations



Timely insight with low cost situational applications

Manage worldwide operations

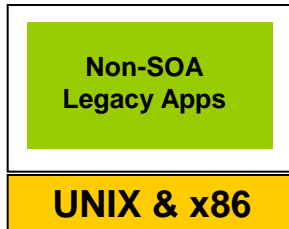
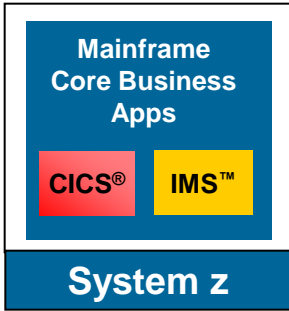


Rapidly introduce new capabilities throughout the business with centralized administration

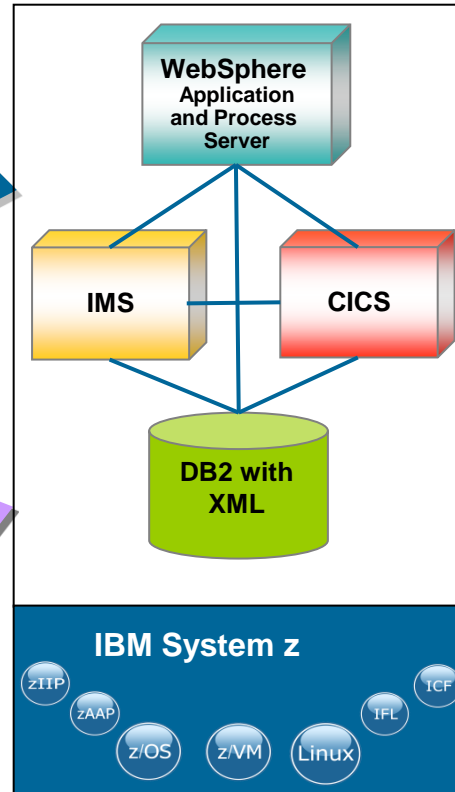
Modernizing the enterprise through SMART SOA



Static Business Assets



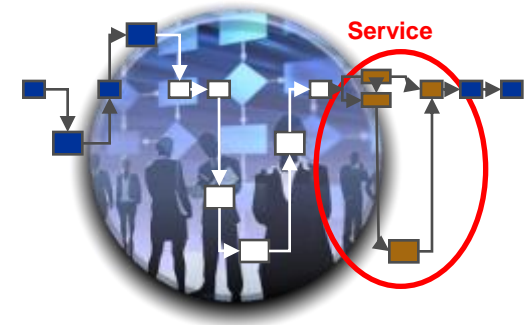
SMART SOA Foundation



Optimized Assets, Skills, and Infrastructure



- Optimize cost
- Increase flexibility
- Boost productivity
- Maximize business agility



HUK-COBURG



Industry Pains

- Need to access more functionality and spread out its data processing load
- Reduce CPU usage to cut operating costs

Smarter Business Outcomes:

- Reduces CPU usage for CICS technology by 400 million instructions per second (MIPS), for savings of \$320,000
- Cuts CPU usage in the internal coupling facility by 40%
- Achieve CPU savings through threadsafe functionality



Why Dynamic Application Infrastructure?

Deliver on business objectives and reduce operating costs

The right platform for any situation SOA-enabled agile integrated application environment



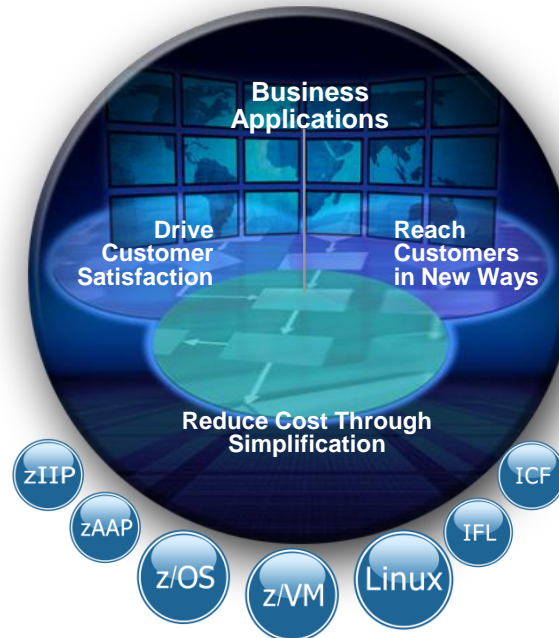
Modernize and transform your environment

**IBM WebSphere
Application Server
for z/OS**

Practical reuse of
on-line Java assets
in Batch

**IBM CICS Transaction
Server and Gateway**

Understanding,
Optimization
and Control



**IBM WebSphere
Compute Grid for z/OS**

IBM CICS Tools

**IBM Problem Determination
Tools for z/OS**



Combining industry-leading runtimes and z/OS to deliver superior customer value



Open Standard Application Programming Models

CICS
WebSphere Application Server for z/OS

*Passive
Qualities of
Service*

**Value attributes of the
operating system**

Active Platform Exploitation

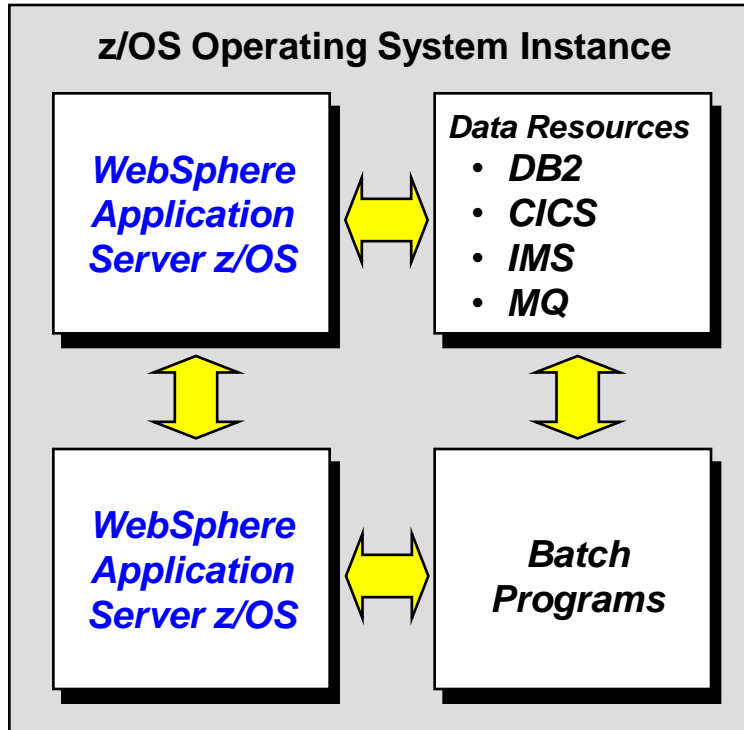
- Workload Mgmt
- Security
- Transaction Mgmt
- Thread Management
- Scalability
- Recovery

Value attributes of the hardware





Collocation Benefits



- ***Extremely* fast data transfer**
- **Tightly controlled by z/OS authorization processes**
- **Eliminate need to serialize and deserialize data and objects**
- **Eliminate need for encryption overhead**
- **Propagate several forms of user identity**

Efficient -- very low overhead so scalability can be addressed

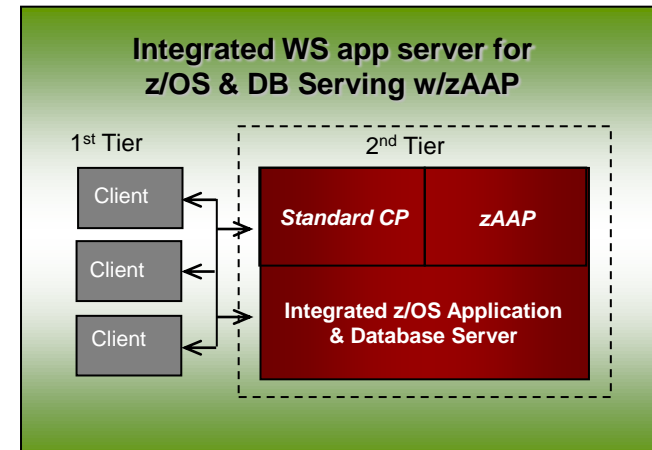
Secure -- no network, can't be sniffed or hacked

Fast -- for very high volume workloads

WebSphere Application Server for z/OS V7



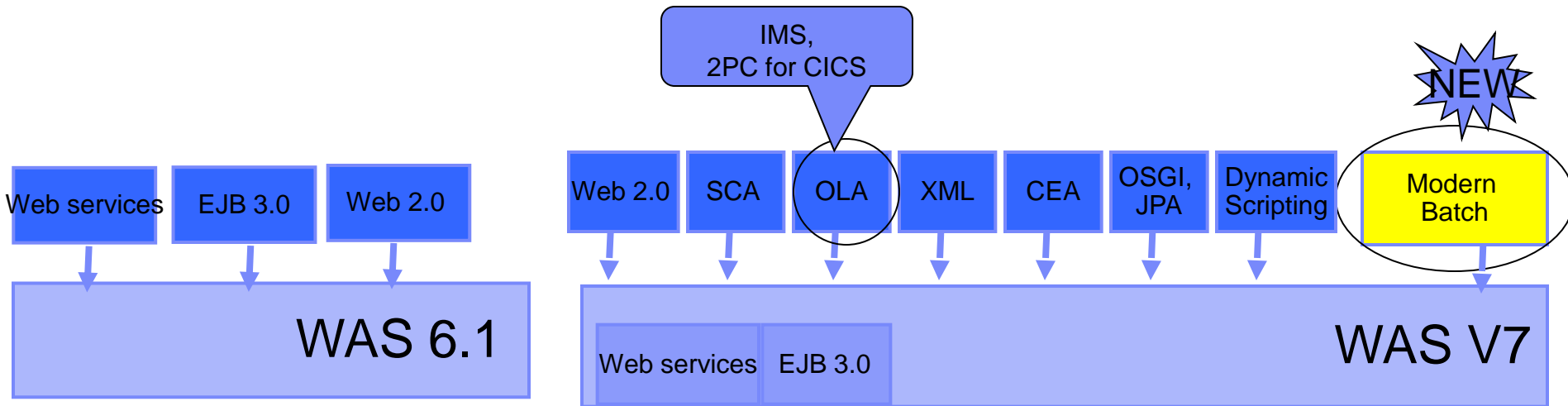
- Reduced cost of ownership and enhanced agility
 - Common code and industry standards (JEE, Web Services, etc.)
 - zAAP enabled for low cost Java application deployment collocated with mission critical data
- Innovation that matters
 - Feature Packs for ongoing functional enhancements
- The unique value of WAS for z/OS and its active platform optimization and exploitation
 - Replicated Server cluster architecture leveraging shared data for scale and availability
 - Native OS support: RRS, RACF, zWLM, SMF, ARM, Parallel Sysplex
 - Optimization features designed to provide performance, security and data interaction, including FRCA, thread hang recovery, etc.
 - Collocation advantages when connecting to traditional mainframe subsystems – CICS, IMS, DB2
 - Other “Hidden Gems” documented in White Paper (WP101138) on Techdocs at www.ibm.com/support/techdocs



Innovation that Matters – Feature Packs



Revolutionizing the way customers consume application server technology now and in the future



1. Choose the application server technology you need.

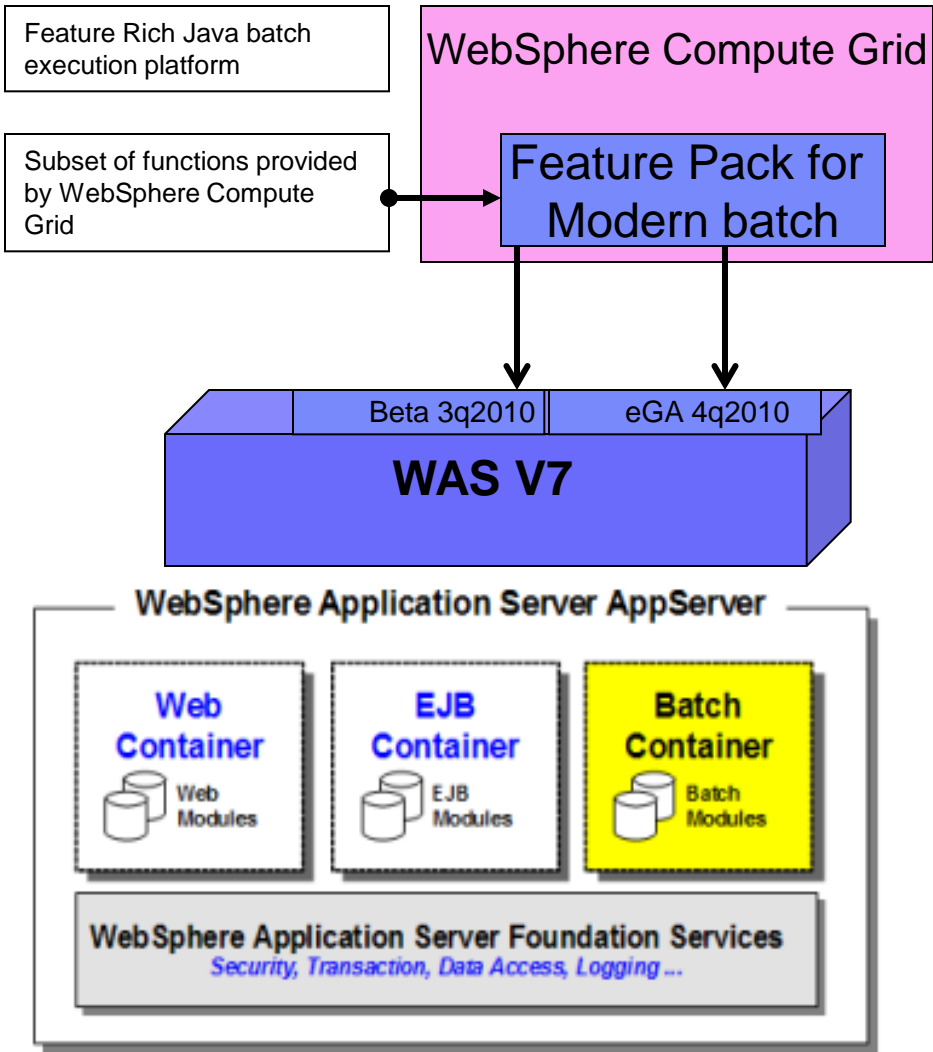
2. Install additional functionality on core WAS 7

3. Build the Application Server you want without waiting for new releases.

As new technology evolves, so does WAS – get the technology you need now without waiting for a new release!



Jumpstart “Batch” Development and Deployment



What is it?

Pre-integrated application framework to help increase developer productivity and time to value for Java batch applications allowing sharing of business logic between batch and OLTP applications

Value proposition

- Reduce cost of infrastructure due to concurrent execution of batch and OLTP workloads using shared business logic on a shared infrastructure integrated with WebSphere Application Server
- Reduced operational cost due to integrated administration of OLTP applications and batch jobs
- High throughput and low resource consumption on z/OS for Java Batch when collocated with data subsystems

Achieving maximum performance through currency

Runtimes

- *WAS V7 vs V6.1 up to:*
 - 42% faster for legacy apps
 - 47% faster for Web Services
 - 70% faster for Java EE apps

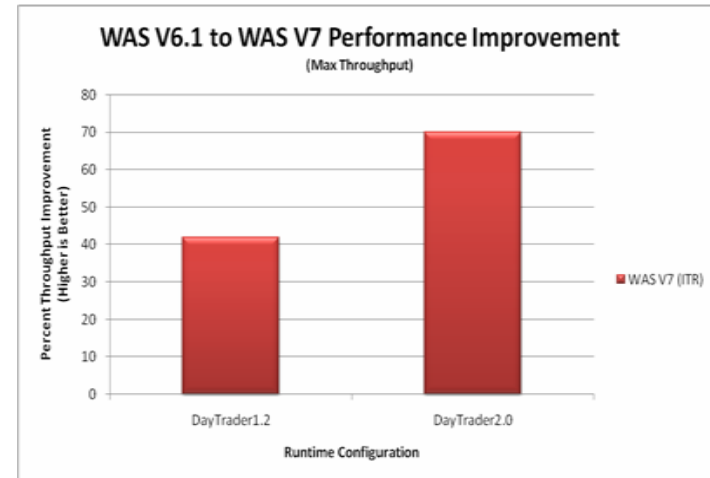


Compilers

- *z/OS XL C/C++ v1.11*
 - Improved a customer application ~20%
 - Enhanced system programming capabilities
 - Supporting latest Middleware and tools

Hardware

- Generation to generation price / performance gains
- Unique value of specialty engines
- Ability to reduce energy costs by up to 80%

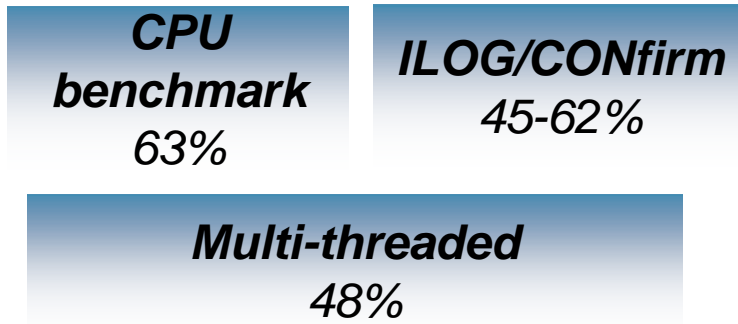


Java and WAS Performance with zEnterprise



Java6SR8

World class per-thread performance yields outstanding results:

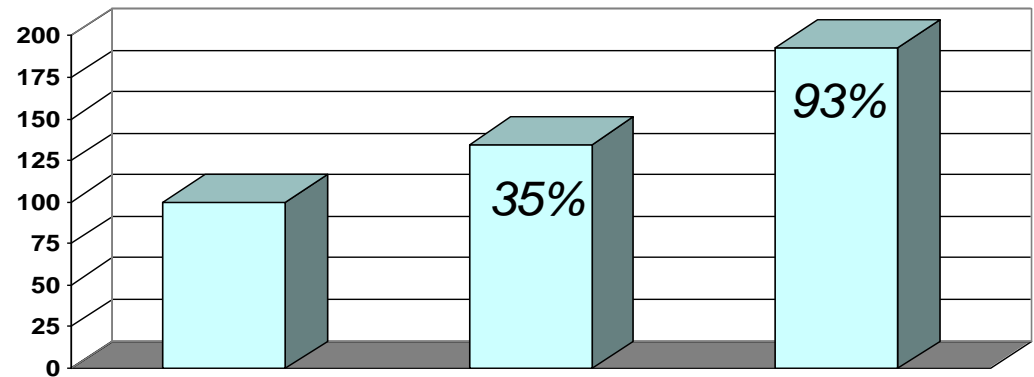


WebSphere V7

System z10
Announce

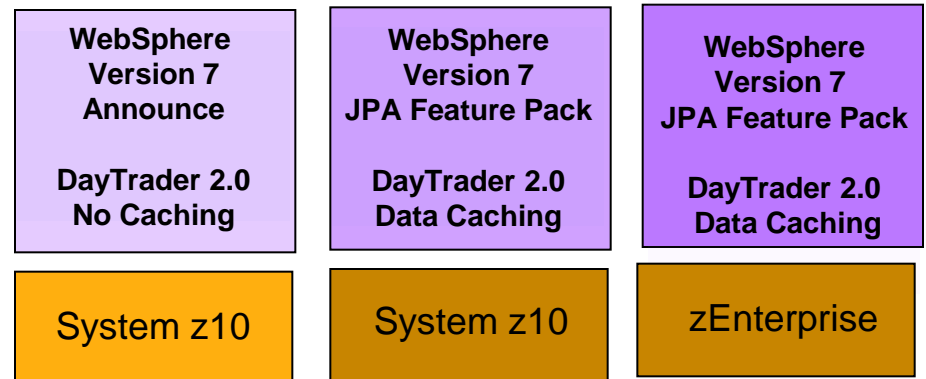
Uplevel
Software

zEnterprise
Hardware



Extensive hardware and software collaboration delivers deep platform synergy

- New out-of-order pipeline design
- 70+ instructions
- Java runtime environment general optimizations



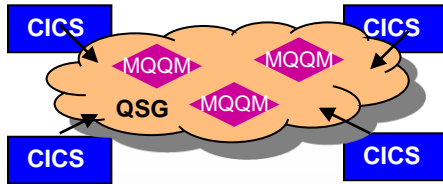
CICS is at the heart of smart business



Revitalize Business

“Real-time visibility for smarter decisions and actions”

Integrated Tool Solutions

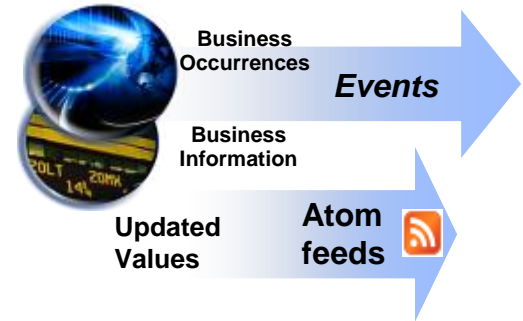


Tighter MQ Integration



Event source for Dynamic Business Networks

CICS Business Applications



Integration for LOB and COBOL business rule mgmt.

Revitalize Infrastructure

“Greater efficiency and reduced costs”

Revitalize Applications

“Faster and easier to respond to change”



CICS Explorer – The new face of CICS Transaction Server

Reduce the need for multiple interfaces

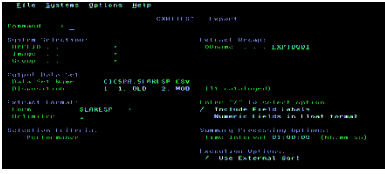
Before...

Now ...

Web



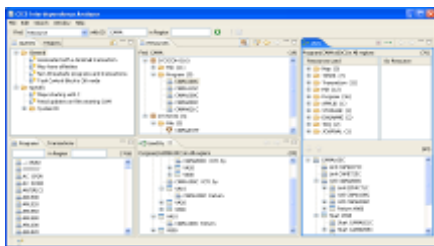
ISPF



CICS 3270



Eclipse



Response measurement	Time (avg)	Count	%Overall	%
0 transaction(s)	0.005015			
2 transaction(s)	0.005015			
User Dispatch time	0.002816	2	56%	
User CPU time	0.000608	2	12%	
CICS Key 8 TCB CPU time	0	0	-	
J8 TCB CPU time	0	0	-	
L8 TCB CPU time	0	0	-	
S8 TCB CPU time	0	0	-	
T8 TCB CPU time	0	0	-	

More info and downloads at ibm.com/cics/explorer



Increase productivity with integrated tools

- CICS Performance Analyzer V3.1
- CICS Interdependency Analyzer V3.1
- CICS Configuration Manager V2.1
- CICS Transaction Gateway V8
- OMEGAMON XE for CICS V4.2
- Rational Developer for System z V7.6



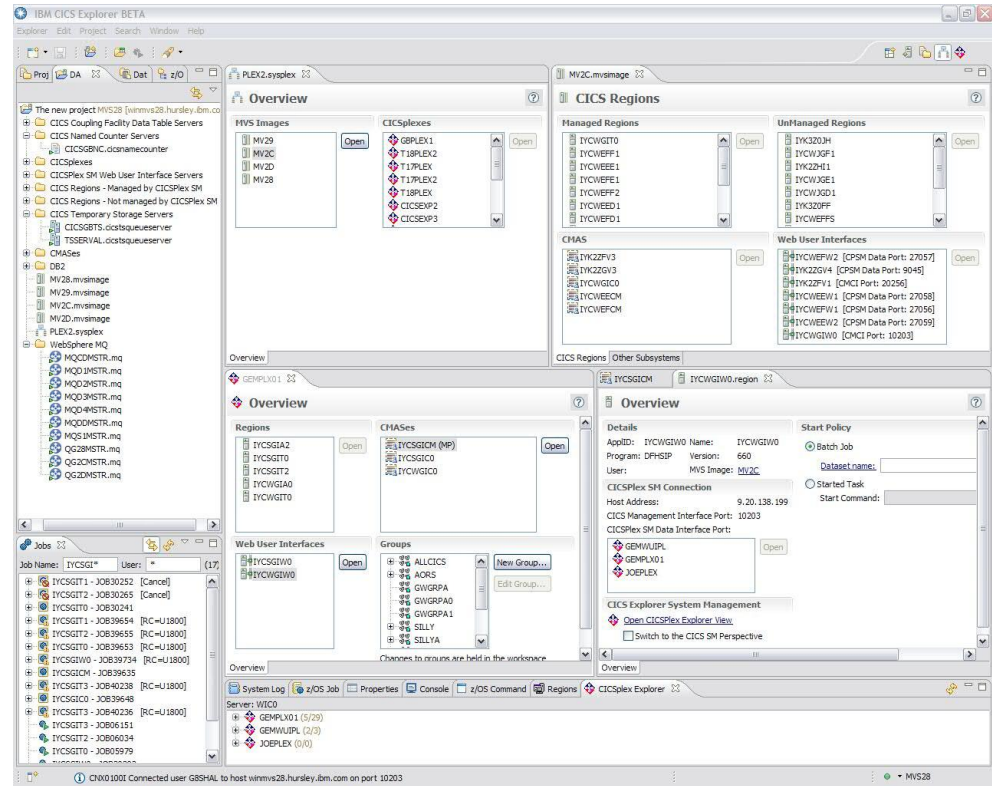
<http://ibm.com/cics/explorer/download>

Accelerating return on your CICS investments

IBM CICS Deployment Assistant for z/OS



- New Deployment perspective integrates with CICS Explorer
- Discover and View CICS system Topology Model
- Automated creation, deployment, customization, and control of CICS regions
- Edit files, submit JCL, view output
- Simplify tasks, save time, and reduce risk
- More info at <http://ibm.com/software/htp/cics/deployment/>



- Features and benefits, data sheet, announcement letter ...





Reuse business applications

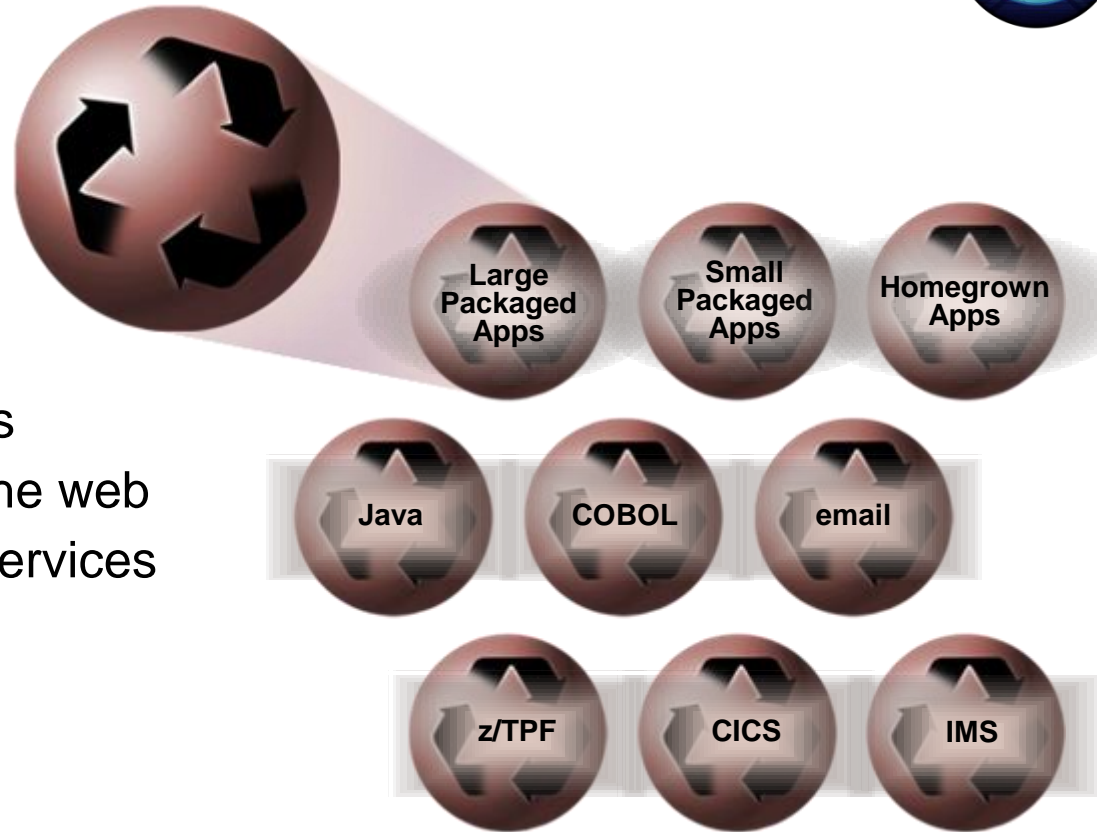
-- Enable agility required for smart business outcomes

Get More Value from Applications & Expand Business Opportunities

- Service-enable existing packaged and existing apps
- Create new, reusable services
- Extend reusable services to the web
- Consume external reusable services

Benefits

- Extend ROI by reusing prior investments
- Reduce risk and costs by leveraging robust applications
- Speed time to market with faster development cycles



Three ways to drive agility while optimizing costs

Business Needs

“Ensure applications consistently deliver on business needs in all situations”



Common Buying Scenarios

Dynamic
Application
Infrastructure

“Adapt and respond to dynamic business situations”



**SOA
Connectivity
and Integration**

“Quickly respond to changing customer expectations and business demands”



Business Process
Management

An edge in the market – SOA Connectivity and Integration



**Confirmed
Flight
Booking**



**Lower process disruptions with
reliable data movement**

**Central Airport
Checkpoint**



**Create new revenue-generating
services from current core business
applications**

**Routing Bank
Transactions**



**Adapt business faster by easily
connecting services & apps**

**Centralized
Information
Source**



**Reduce cost and duplication by
leveraging existing assets**

Highmark, US health insurer

The Highmark logo, featuring the word "HIGHMARK" in a stylized, sans-serif font with a blue swoosh above the letters.

Industry Pains

- Develop IT system dexterity to serve a new business model: packaged services tailored to customers' individual insurance requirements

Smarter Business Outcomes:

- Replace rigid point-to-point integration with flexible SOA framework
- "Simplify integration between platforms to speed up and lower cost of new consumer service development"



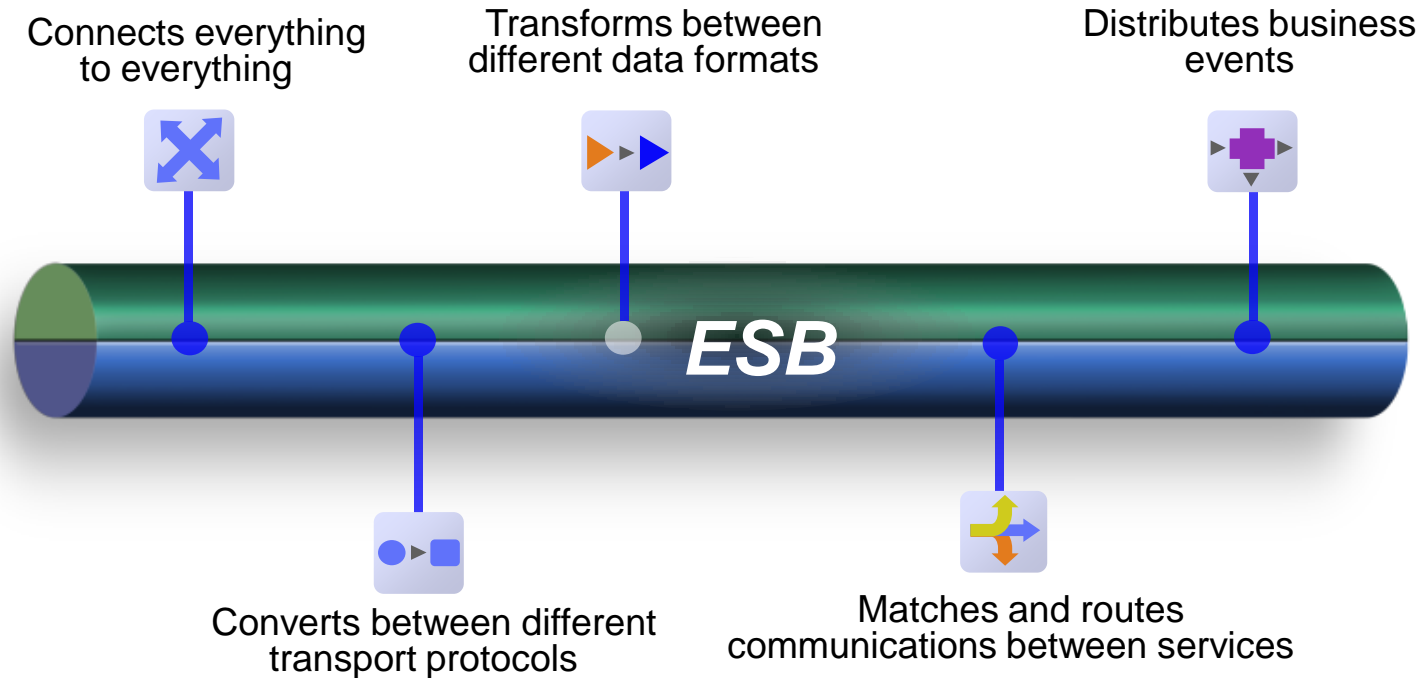
Why SOA Connectivity and Integration?

Use WebSphere Message Broker to create an ESB between various applications as part of SOA implementation



Agility and savings begin with integration

--The Enterprise Service Bus (ESB)



Optimize Costs by: *Integrating new customers and partners up to 80% faster, Improving performance more than 10x - with lower costs, and Achieving full ROI within as few as 6 months*

**IBM WebSphere
Message Broker for z/OS**

**IBM WebSphere
Enterprise Service Bus**

**IBM WebSphere
MQ for z/OS**

Service visibility and governance



- **Trust:** Publish & find Your Services to extend business applications
- **Manage** and govern your ESB messaging and services
- **Secure:** Ensure consistent policy enforcement

IBM WebSphere MQ File Transfer Edition for z/OS

IBM WebSphere Service Registry & Repository for z/OS

Governance for File Transfers

WebSphere MQ File Transfer Edition



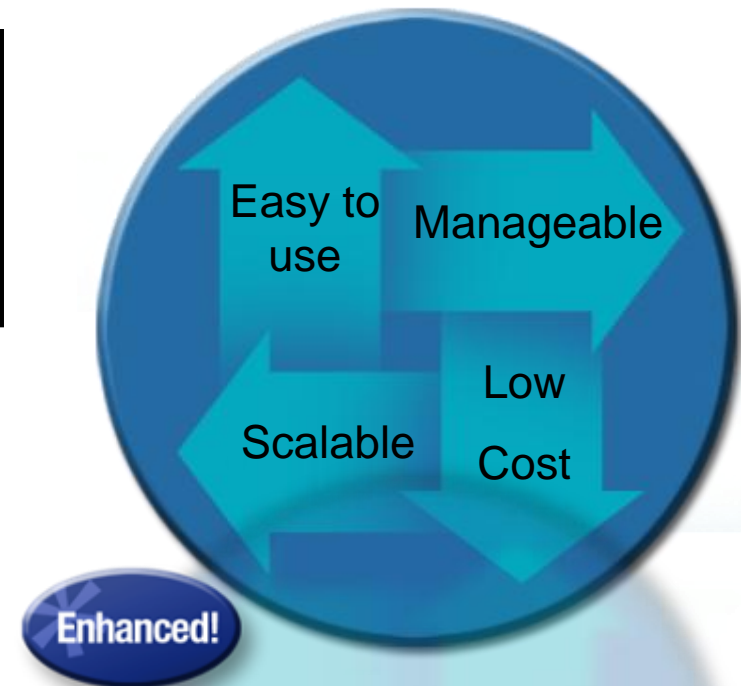
- Most data moves from application to application using file transfers
 - Lowest common denominator for Integration
- Provide the visibility & manageability to move key business data reliably & securely
 - Inside and outside the Enterprise

Reducing Costs

- Lower maintenance upkeep by 15%-25%
- 50% to 70% reduction in file management cost

IBM WebSphere MQ File Transfer Edition

- Builds upon MQ's proven transport
- Delivers robust solution for Managed File Transfer
- Purpose-built to integrate with IBM's SOA portfolio



Three ways to drive agility while optimizing costs

Business Needs

“Ensure applications consistently deliver on business needs in all situations”



“Adapt and respond to dynamic business situations”



“Quickly respond to changing customer expectations and business demands”



Common Buying Scenarios

Dynamic
Application
Infrastructure

SOA
Connectivity and
Integration

**Business
Process
Management**

The power of Business Process Management



Supply Chain Management



Automatically adjust forecasts and shipments to increase accuracy and reduce costs

Retail Inventory



Detect and respond to inventory changes in real-time to meet customer demands

Telecom Services



Quickly deliver more compelling and profitable service bundles to increase customer retention

Insurance Claims Processing



Improve productivity and customer satisfaction by automatically routing claims to the right knowledge worker

Ball State University



Industry Pains

- The need to create an end-to-end Web-based registration system for 20,000 students

Smarter Business Outcomes:

- SOA with BPM bridges siloes between .NET and mainframe
- Near real-time information regarding availability and requirements of courses yields greater revenue from successful enrollments and higher user satisfaction



Why Dynamic Business Processes?

With WebSphere Business Modeler and Process Server, there is no application or information that cannot be reached.

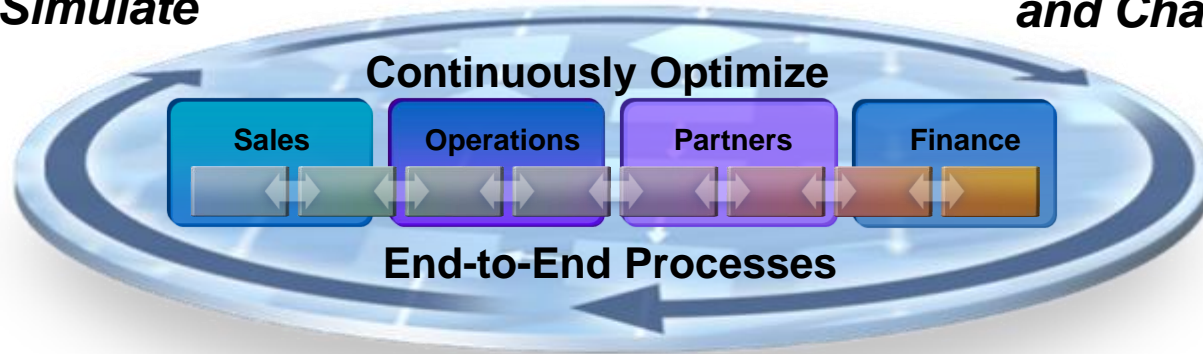
Process Automation

Improves operating efficiency and reduce costs



Model and Simulate

Rapidly Deploy and Change



Monitor, Predict and Act



Streamline business activities

Lower Costs

IBM WebSphere Process Server for z/OS

Complement and extend existing applications

Reduce cycle time

IBM WebSphere Business Monitor

Leverages reusable process components

Easier to Manage

IBM WebSphere Business Modeler

Business events all around us: How to take action



What is a business event?

An action that has occurred, or the absence of it occurring, which has relevance to the business

Nearly **4 Trillion** RFID events are emitted each day



Large companies can experience up to **800 Billion** business events (shipments, weather, customer contacts, delays) daily



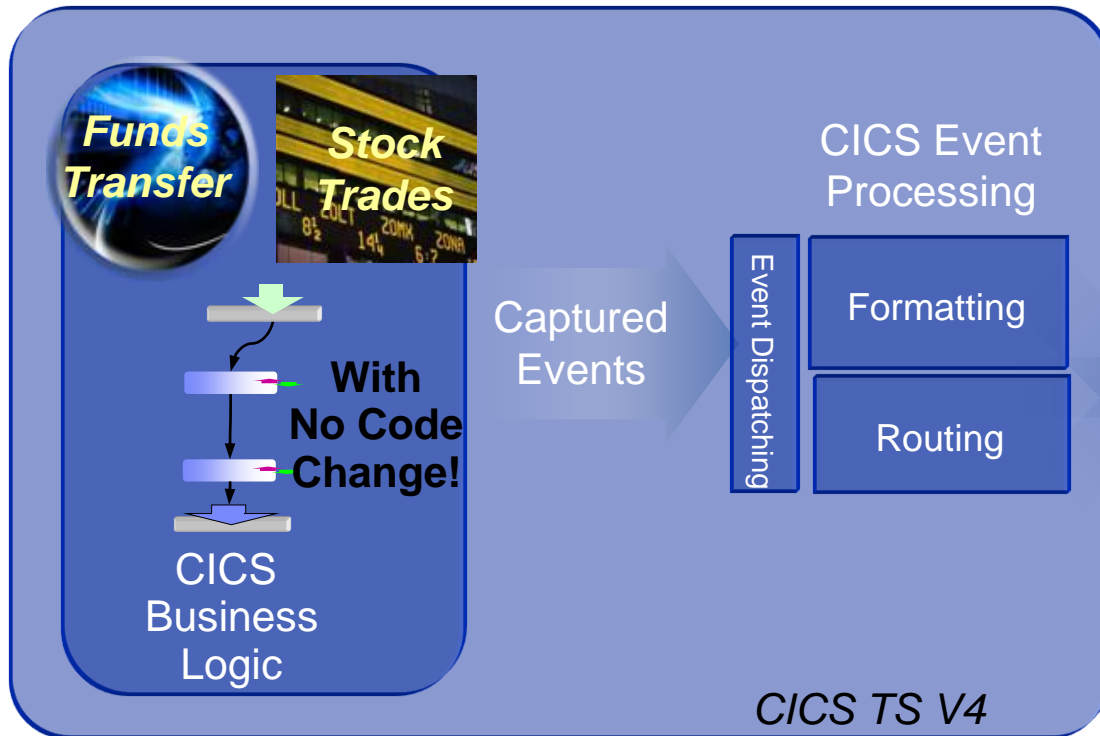
Over **190 Billion** emails are sent daily



Capture mainframe events for smarter business outcomes



CICS Event Sources



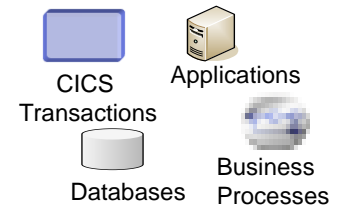
Detect fraud and take action



**WebSphere
Business Monitor**



**WebSphere
Business Events**

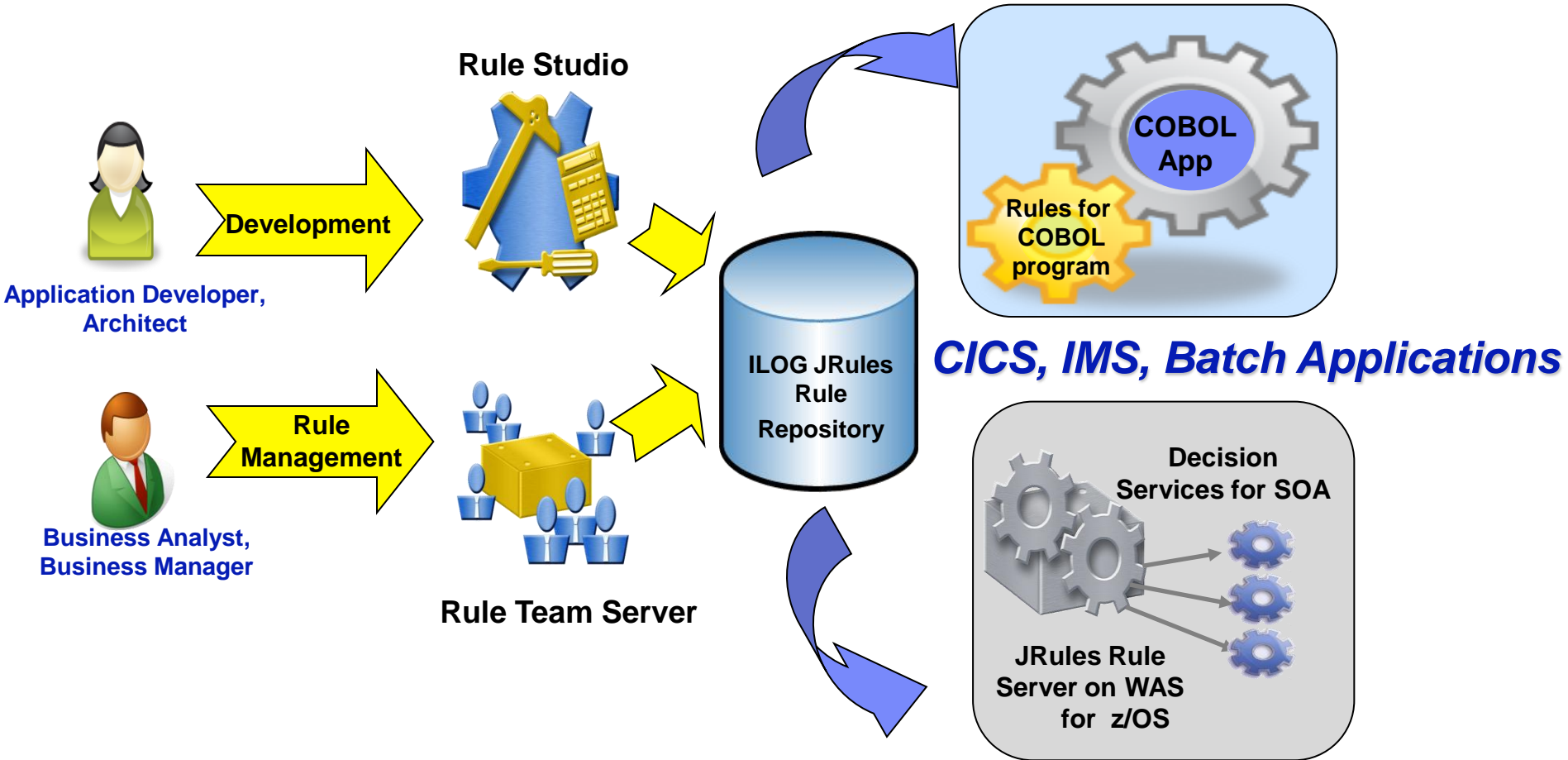


**Other Event
Consumers**



ILOG Business Rule Management Solutions on System z

Option 1: ILOG Rules for COBOL



Benefits of a Dynamic Application Infrastructure on System z

- Integration with Existing Assets
- High performance
- Server consolidation
- Dynamic scalability
- 99.999% Availability
- Exploitation of Java/J2EE
- Uninterrupted support
- Low TCO of applications
- Performance Optimization through collocation



Let's Build a Smarter Planet on System z

