

# System z Premier Executive Event



## zEnterprise and System z Software Strategy and Direction

**Ray Jones**

Vice President,  
Worldwide System z Software  
IBM Software Group



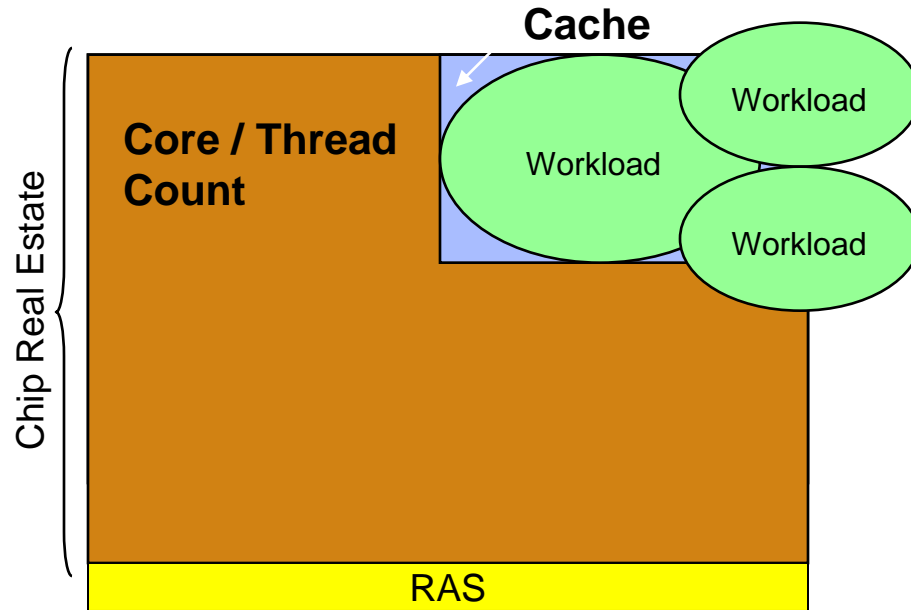
# System z Software Strategy

- **Capitalize on Traditional System z Strengths**
  - Batch and Transaction processing, Data Serving, Highest Quality of Service
  - Optimize to the evolving System z Hardware design point
- **Extend Value Proposition to New and Mixed Workloads**
  - Systematic re-engineering of the software stack
  - Integrate with Modern Application Development Environments
  - Deliver extensive Data Management services
  - Leverage the wave of workload consolidation; zLinux
  - Simplify System z – make it easier to install and manage for better TCO
    - New faces of z
    - End-to-end management from a z central point of control
- **Continue to grow the System z Ecosystem**
  - Attract new System z customers and ISV application workloads
  - Enable new Hybrid and Cloud environments
  - Make System z relevant to the new IT generation



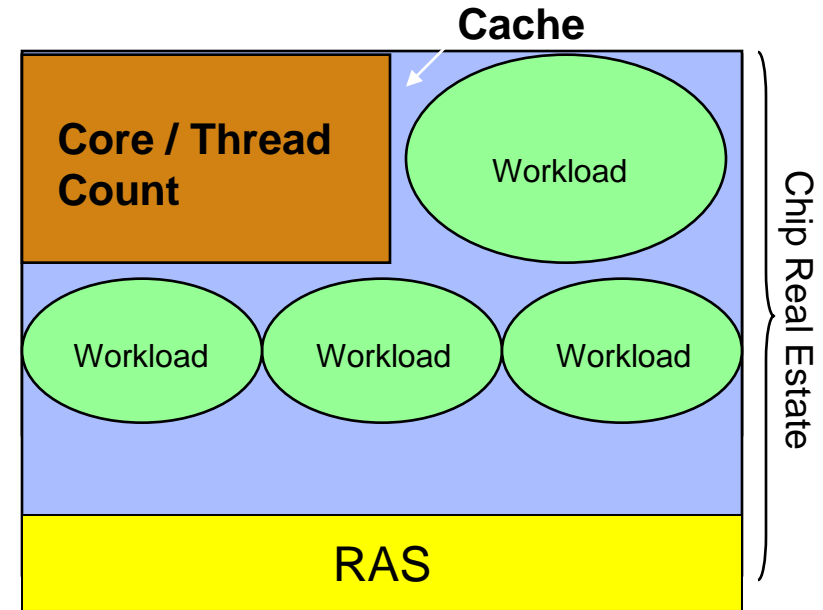
# Chip Design Affects Virtualization Capabilities

## Replicated Server Chip Design



- Mixed workloads stress cache usage, requiring more context switches
- Working sets may be too large to fit in cache
- Full processor speed is not realized due to cache misses

## Consolidated Server Chip Design



- System z cache is able to contain more working sets
- zEnterprise 5.2 GHz Processor speed is optimized by increased cache efficiency
- Shared caches enable efficient dispatching of mixed-workload tasks with high processor utilization
- Comprehensive Remote Access Service (RAS) design supports putting more workload in a single processor

Note: System representations are not to scale, proportions may vary based on generation of chip and model

# Smarter Software...



**Knows and acts**  
*Turn information into insight*



**Adapts**  
*Increase agility*



**Connects**  
*Connect & collaborate*



**Delivers**  
*Enable business service and product innovation*



**Optimizes**  
*Drive enterprise operations effectiveness and efficiency*



**Protects**  
*Manage risk, security, and compliance*

# A New Release of z/OS Improves Performance and Ease of Use

## z/OS Version 1 Release 12

*Increased performance for enterprise applications*

*Increased availability for mission critical workloads*

*Improved ease of use with new user interfaces and automation*

*Centralized support for integrated computing, featuring*

*up to **30 to 50%***

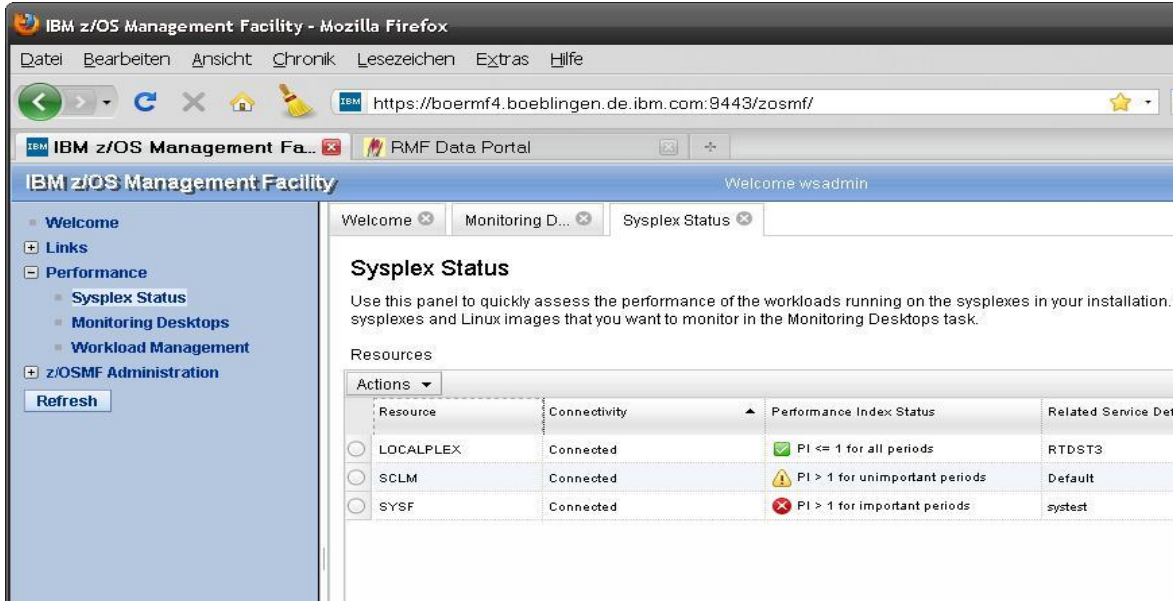
*performance improvement for XML validation workloads*

*up to **40%** performance*

*improvement for VSAM-based online and batch workloads*



# z/OSMF Resource Monitoring *Benefits*



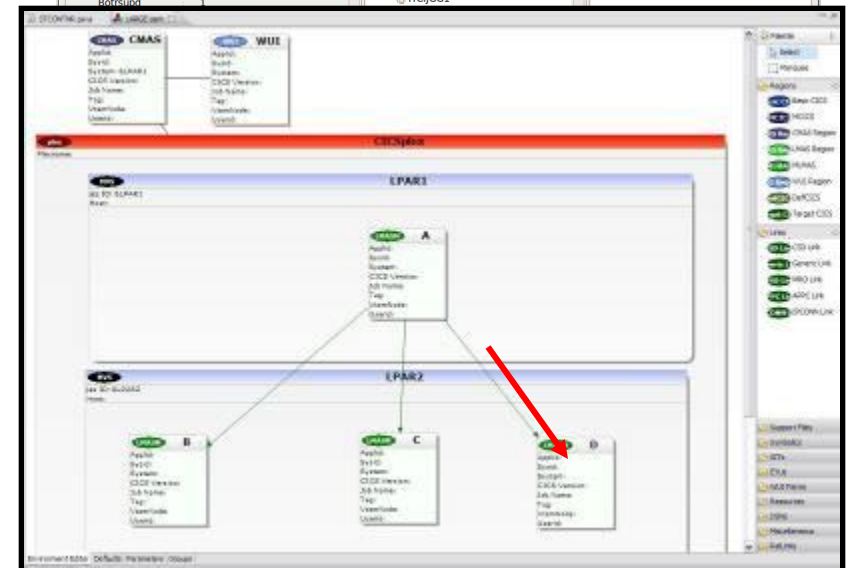
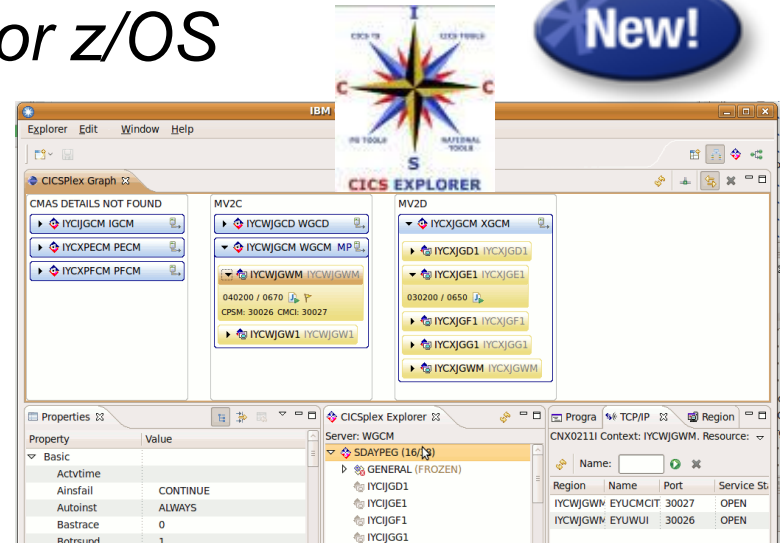
	<b>Without z/OSMF Resource Monitoring)</b>	<b>With z/OSMF Resource Monitoring</b>
Checking the performance status for several sysplexes	Monitor each sysplex, Manually consolidated data from different reports. (Monitoring zLinux must be done with other tools)  Up to 15 minutes to look up each sysplex and high degree of skill needed to interpret reports	Cross-sysplex performance monitoring from a single point of control with color indicators. (zLinux monitor features fully integrated).  Just seconds to see the health of all your sysplexes (and Linux images)
Explore & compare the processor usage of specifics jobs	Report layouts fixed as viewed - one at a time. Limited customization and filtering. Manually consolidated data from different sources  A long time, depending on data and correlations required. Generating reports may not possible.	Monitoring is customizable. Specific metrics can be added. Multiple views are started in parallel Advanced filtering features allow sophisticated analysis.  About 5 minutes to set up a custom monitoring desktop, 3 key clicks to view real-time statistics

# Accelerating Return on Your CICS Investments

## IBM CICS Deployment Assistant for z/OS



- New Deployment perspective integrates with CICS Explorer
- Discovery and Modelling of CICS systems and applications
- Advanced Topology Visualization
- Automated creation, deployment, customization, and control of CICS regions
- Edit files, submit JCL, view output
- Best practice cheat sheets assist CICS version upgrades and CICSplex<sup>®</sup> SM set-up



# IBM Compilers Exploit System z for Maximum Performance

- Compilers exploit new hardware instructions introduced by System z
- Code generated by the compilers is highly tuned for System z
- Boost in performance of applications running on System z



**z/OS XL C/C++**

**Enterprise COBOL for z/OS**

**Enterprise PL/I for z/OS**

**135 new / changed instructions**



# Java and WAS Performance with zEnterprise

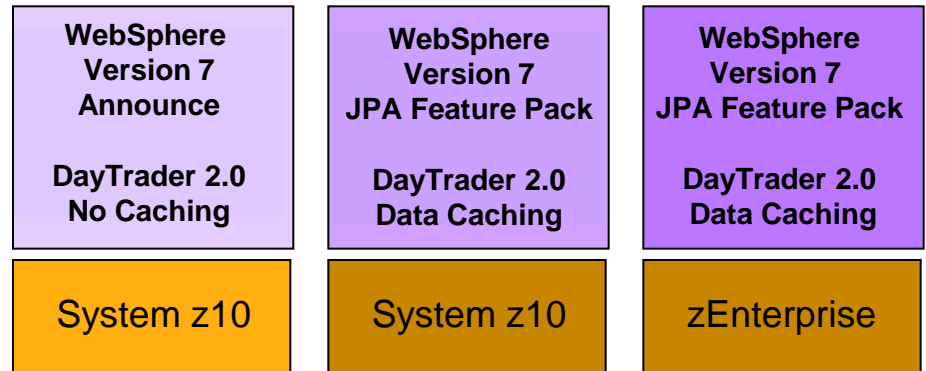
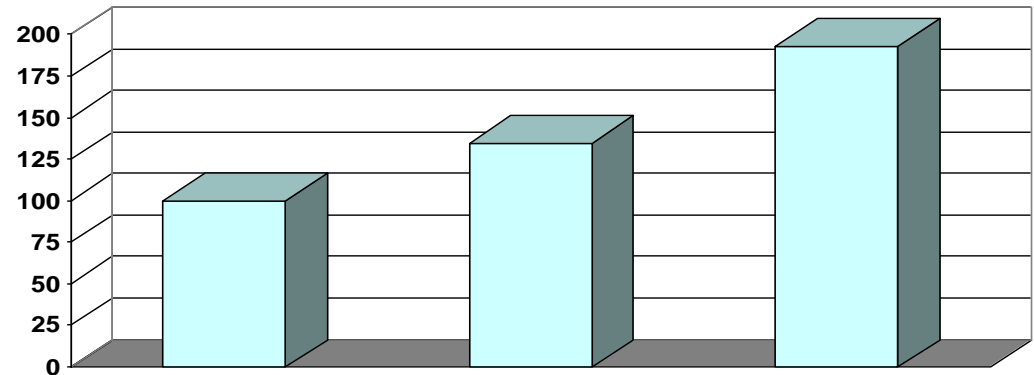
World class per-thread performance yields outstanding results:

<b>CPU benchmark</b> 63%	<b>ILOG/CONFIRM</b> 45-62%
<b>Multi-threaded</b> 45%	
<b>WebSphere V7</b> up-to 93%	

Extensive hardware and software collaboration with deep platform exploitation:

- New out of order pipeline design
- 70+ instructions
- Java runtime environment general optimizations

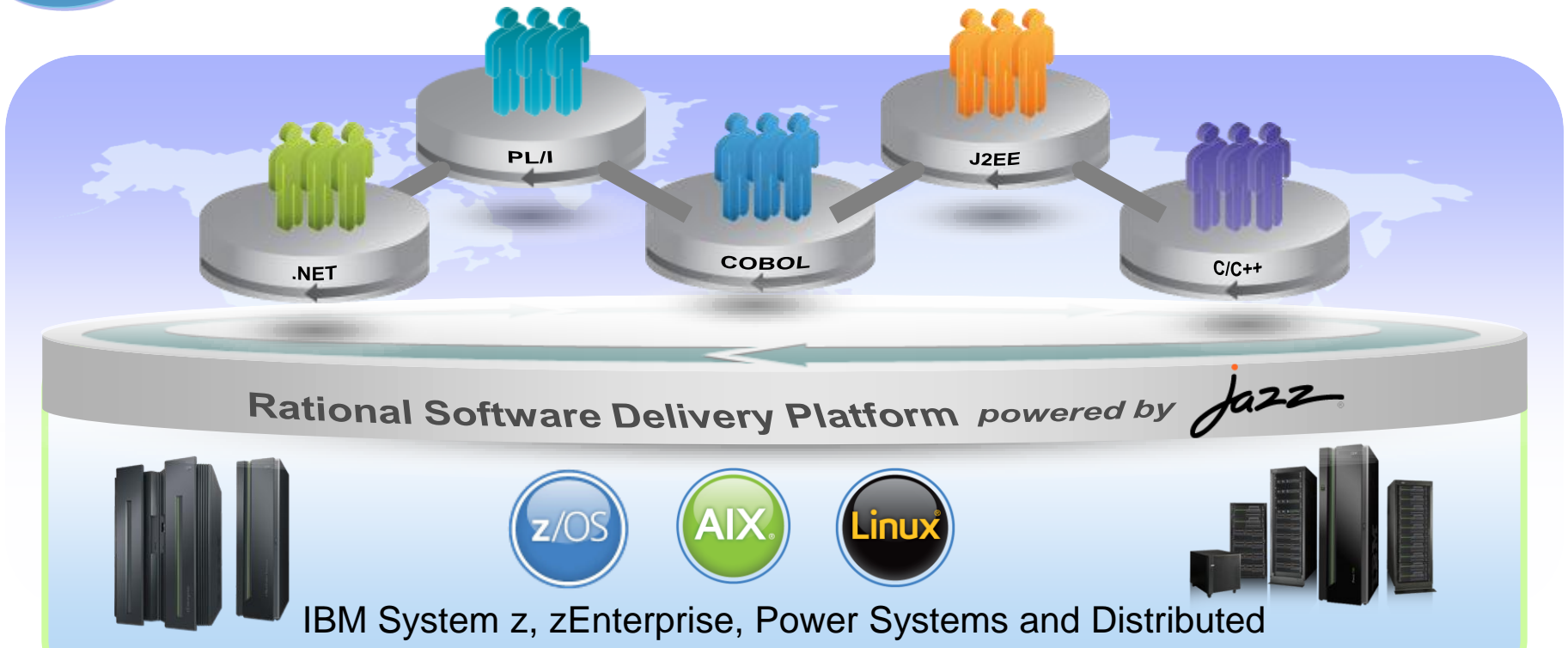
System z10 Announce      Uplevel Software      zEnterprise Hardware



Then  $\longrightarrow$  Now

# Collaborative Design and Build

**New!** Rational Team Concert v3.0



## Delivering...

- ✓ Single integrated platform for managing delivery of multiplatform projects
- ✓ New support for advanced dependency analysis and build capabilities for z/OS projects
- ✓ New integrated ISPF green screen client for z/OS source edit, compile and debug

# DB2 10 for cost savings and performance

- Up to 40% savings in processing costs
- Up to 6 times the number of SAP users on a single system
- Time Travel temporal capabilities built directly into the database
- Direct Row access accelerates high performance applications



*"We have measured a 38% reduction in CPU for heavy insert workloads in a data sharing environment. That's a significant savings which provides immediate business benefit."*

*Peter Paetsch, BMW*



*We expect to reduce our data sharing requirements by 25%, which means less system, storage and resource expenses*

*Banco do Brasil*



*The new temporal functionality in DB2 10 for z/OS will allow us to drastically simplify our data-related queries and reduce our processing cost by having DB2 handle data movement more efficiently than our custom code*



*"As much as 80% of our applications can use this, which will drastically save developer time and even more importantly make applications easier to understand to improve business efficiency and effectiveness"*



*"In addition to the cost savings, DB2 10 for z/OS offers a far superior data server environment than Oracle"*

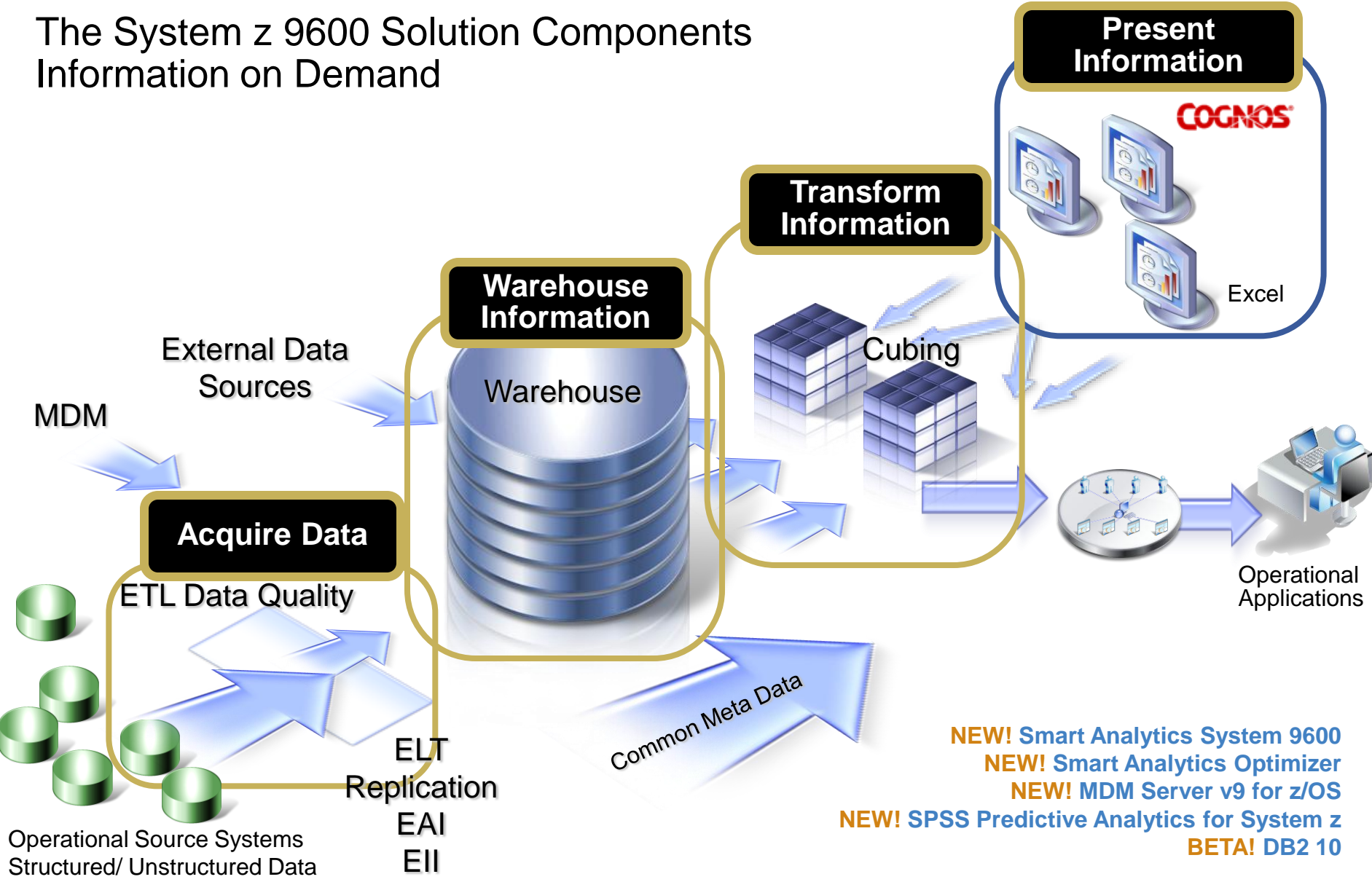
*Manuel Gomez Burriel, CFEA (Spanish Bank Federation)*



*As a multi-national corporation, we must adhere to strict local audit requirements. The security and administration capabilities in DB2 10 are a key driver for us to move to this version."*



# The System z 9600 Solution Components Information on Demand



- NEW!** Smart Analytics System 9600
- NEW!** Smart Analytics Optimizer
- NEW!** MDM Server v9 for z/OS
- NEW!** SPSS Predictive Analytics for System z
- BETA!** DB2 10

# IBM Smart Analytics Optimizer

*Capitalizing on the best of relational and columnar databases*

*Workload optimized, appliance-like, add-on, that enables the integration of business insights into operational processes to drive winning strategies.*

- Performance
- Integration
- Self-managed workloads
- Transparency
- Simplified administration



Up to **80X** performance increase  
in specific queries



# Empower People, Boost Productivity and Collaborate

- **End-to-end Enterprise Content Management (ECM) integration in Team Places with enterprise grade reliability on Linux on zEnterprise**
- **ECM management providing imaging, digital asset management, Web content management and content integration on a multi-tier architecture**
- **24X7 presence, chat and online meetings supported on Linux on zEnterprise**
- **Expanded support of client platforms and mobile devices**

*Connect and scale **150K+** employees, customers, and partners worldwide 24x7*



**NEW!** Lotus® Quickr 8.5 for WebSphere Portal

**NEW!** Lotus Sametime 8.5.1\*

Lotus Connections, Lotus Notes® and Domino®, WebSphere Portal

Other ECM solutions - IBM FileNet and IBM Content Manager solutions

Planned capability. IBM plans are subject to change

# Extending zEnterprise Unified Resource Manager with Integrated Service Management

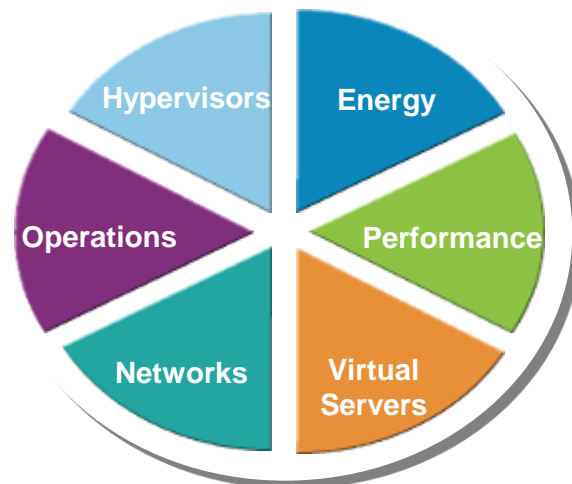
## IBM zEnterprise Unified Resource Manager

- Workload-based resource allocation and provisioning for zEnterprise
- Physical and Virtual Resource Management
- Goal Oriented Management of zEnterprise resources (Availability, Performance, Energy, Security)
- Faster transaction processing with reduced network latency
- Operational Controls for Hardware/Firmware
- Service and Support for Hardware/Firmware
- Hardware configuration management

## Tivoli and Integrated Service Management

Visibility, Control and Automation for Applications, Transactions, Databases, all Datacenter Resources

- Integrated Operational Dashboards to monitor and manage service impacting events
- Key Performance Indicators (KPI) applied to Business Services for impact analysis
- Heterogeneous data in ONE
- Business Service Modeling for planning
- Contextual Correlation to reduce Mean time to repair (MTTR)
- Establish and automate service level agreement (SLA) tracking



# Integrated Service Management for zEnterprise - a single cross platform view for cost effectiveness

- Application Performance Management
  - Visibility into entire application infrastructure
- Asset and Financial Reporting
  - Visibility and accounting of service delivery
- Application Automation and Resilience
  - Policy-based application automation
- Security and Compliance
  - Centrally managed and protected access to web applications, business services, infrastructure and data
- Cloud Management **New!**
  - Visibility into applications and services utilizing System z as a cloud infrastructure
- Workload Automation and Batch Modernization **New!**
  - Single point of governance for batch

## Integrated Service Management



# Control and Compliance on zEnterprise for robust Security

*Unleash the potential of zEnterprise with **Enterprise Security Hub** across production systems and consolidated virtual system workloads*

## Delivering new

- **Simplified security administration to act on multiple profiles and systems to synchronize security, reduce complexity and improve productivity**
- **Extended ease-of-use, monitoring, auditing, and alerts, including UNIX sockets and daily snapshots, to improve automated compliance and audit reporting**
- **Exploiting new zEnterprise and RACF capabilities**

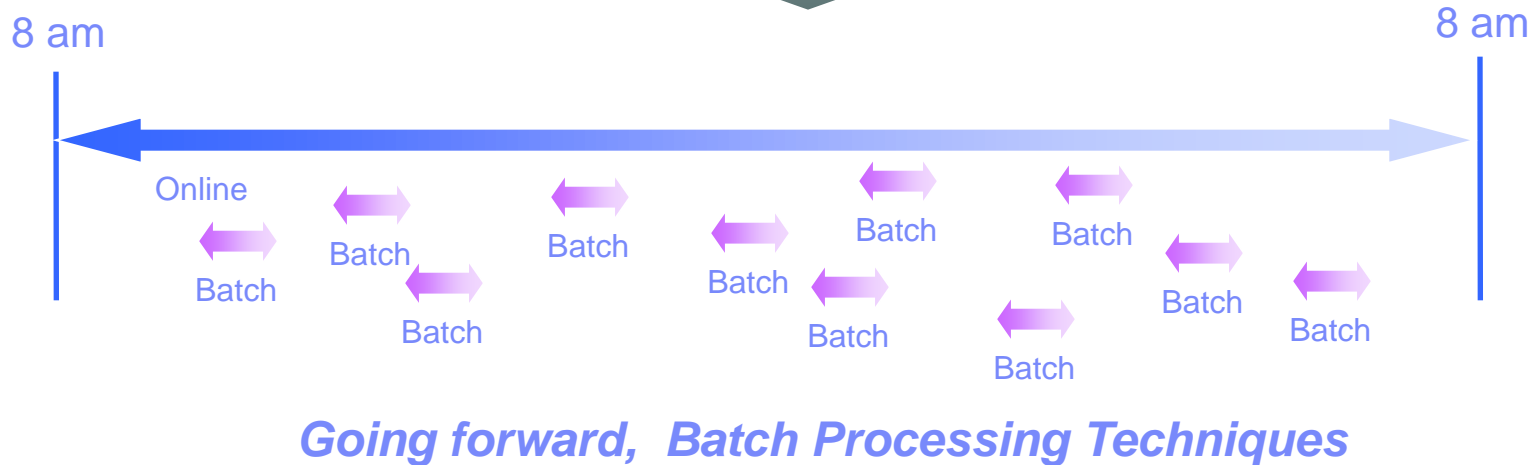
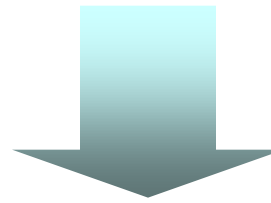
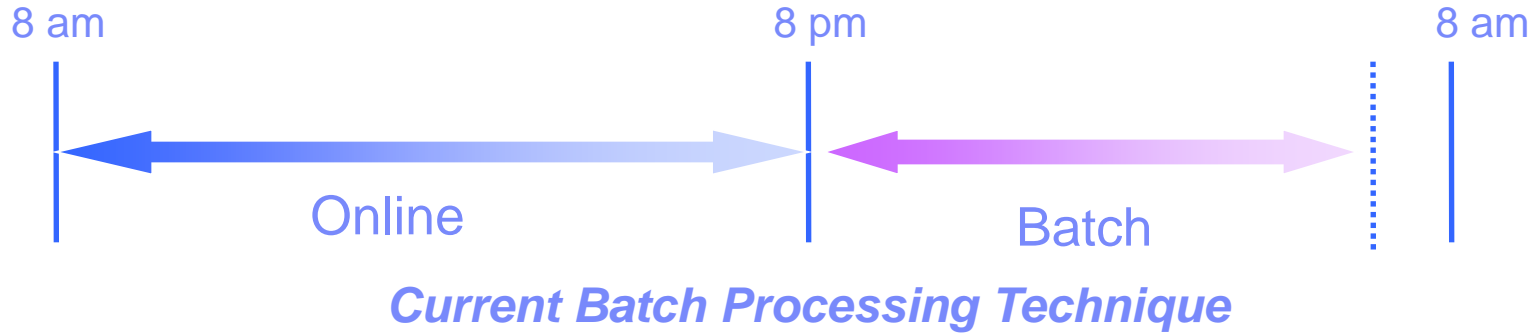


**IBM can save customers up to 70% in auditing overhead on mainframe**

**New!**

**IBM Security zSecure suite V1.12**

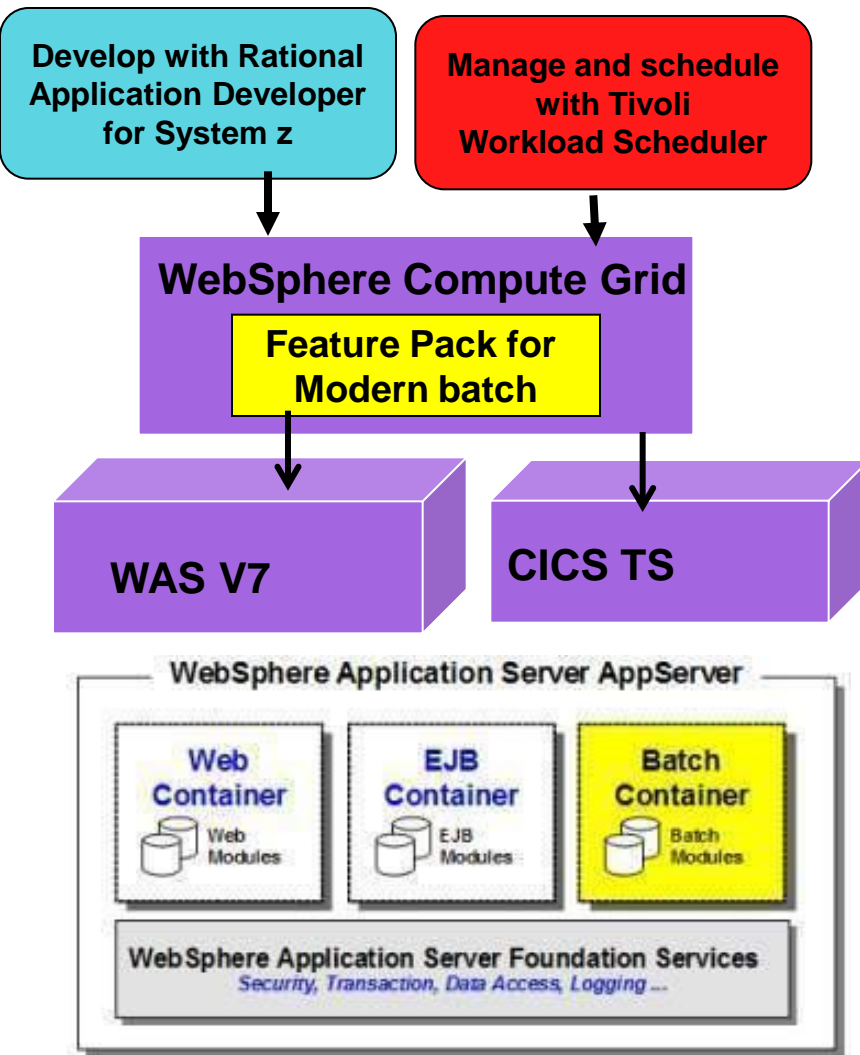
# Continuous Batch Processing





# Modernize batch applications for workload optimization

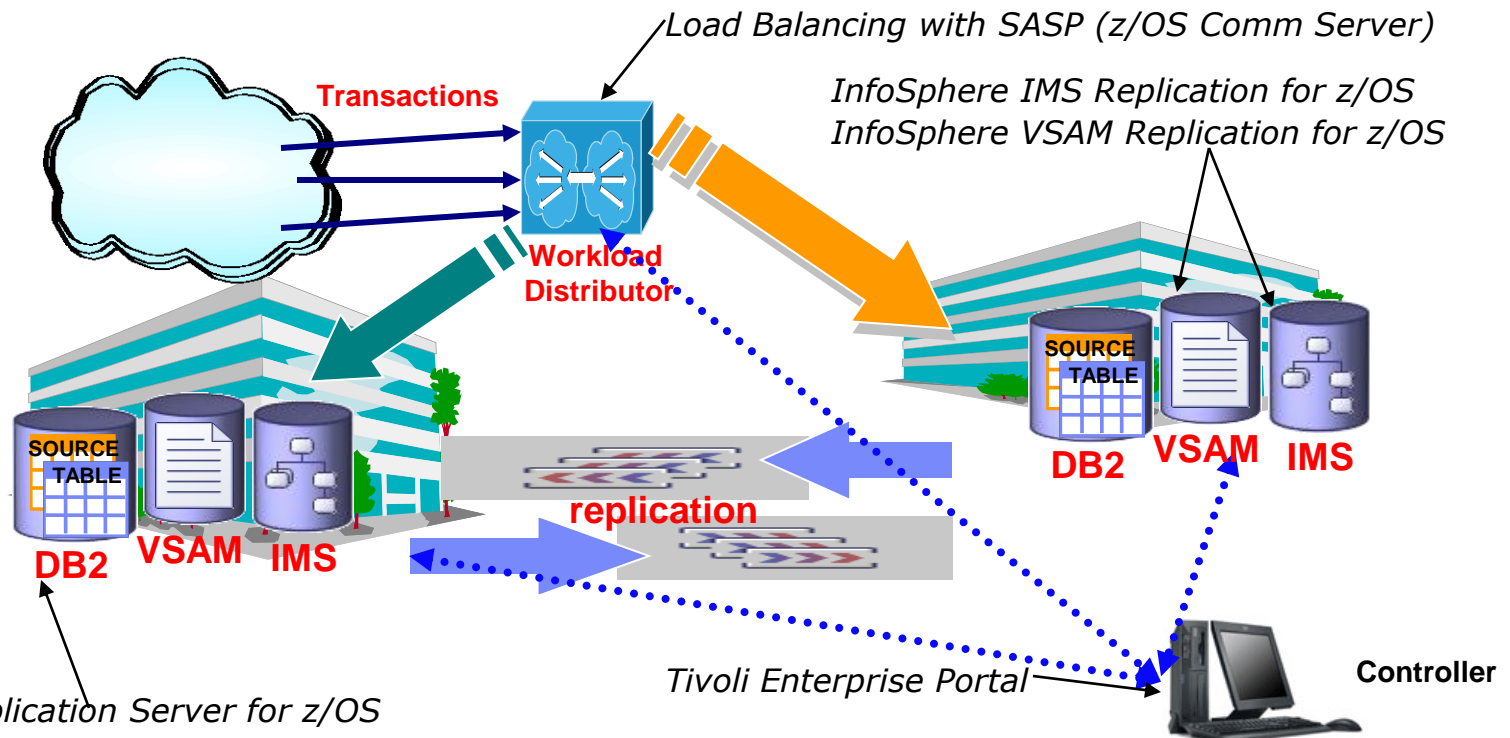
**New!**



- **Enterprise scheduling of web services with new executors by leveraging Tivoli Workload Scheduler (TWS) 8.5.1.1 and TWSz 8.5.1 SPE**
- **Modernize CICS with new ability to schedule and manage Java job steps with CICS TS SupportPac CN11 for WebSphere Compute Grid**
- **Simplify file conversion for faster processing with WebSphere MQ File Transfer Edition**
- **Easy to use offering tools and operational controls for Batch workload execution supporting a Java Batch programming model with WebSphere Application Server V7 Feature Pack for Modern Batch**
- **Extends business flexibility, simplification, and growth of mission-critical applications and data with IMS 12 Beta**
- **Easy development of new batch applications using enhanced creation wizards and zJCL editing with Rational Developer for System z v8.0**

# Active/Active – What is it ?

- Two or more sites, separated by *unlimited* distances, running the same applications and having the same data to provide cross-site workload balancing and Continuous Availability / Disaster Recovery
- Paradigm shift: failover model => near continuous availability model
- Reduction in recovery time from hours to minutes as a design point



# Continuing our investment in zEnterprise software

## July

### July – zEnterprise launch

- Smart Analytics System 9600
- Smart Analytics Optimizer
- SPSS Predictive Analytics for System z
- IMS 11, IMS Enterprise Suite 1.1
- Tivoli Security for zEnterprise
- Tivoli Access Manager Family
- Tivoli zSecure Manager for RACF z/VM
- Tivoli Federated Identity Manager for z/OS
- Tivoli Application Management for zEnterprise
- Tivoli Application Resilience for zEnterprise
- Tivoli Asset and Financial Management for zEnterprise
- CICS Transaction Server Feature Pack for Dynamic Scripting
- CICS Deployment Assistant for z/OS
- WebSphere Business Monitor for z/OS
- Rational Developer for System z Unit Test
- z/OS XL C/C++, Enterprise PL/I for z/OS,
- Eclipse EGL Development Tools project
- Lotus Quickr 8.5 for WebSphere Portal
- Lotus Sametime 8.5.1

## August/September

### August 9

- SupportPac CN11: CICS TS support for WebSphere Compute Grid

### August 10

- IBM® Lotus® Domino® 8.5.2

### August 31

- IBM® Lotus® Quickr™ for Domino® 8.5

### September 16

- IBM® Customer Experience Suite V7.0

### September 24

- IBM® WebSphere® Portal for z/OS and Linux on z 7

## October/November

### October 5

- WebSphere Application Server v7 Feature Pack for Modern Batch
- Information Management System (IMS) V12 (BETA)
- PD Tools v11
- WebSphere ILOG Business Rules for z/OS
- WebSphere ILOG BRMS 7.1.1.
- WebSphere MQ Advanced Message Security (AMS) V7.0.1
- WebSphere Process Server Hypervisor Edition V7.0 for Novell SUSE Linux Enterprise Server for System z
- IBM CICS Performance Analyzer for z/OS V3.2
- WebSphere MQ File Transfer Edition V7.0.3
- WebSphere MQ Telemetry 7.0.1

### October 12

- IBM Passenger Rail Reservation Service

### October 19

- IBM Mobile Portal Accelerator 7
- DB2 10 for z/OS

### October 24

- DB2 for z/OS Tools
- Tivoli OMEGAMON XE for DB2 Performance Expert on z/OS V5.1
- Tivoli OMEGAMON XE for DB2 Performance Monitor on z/OS V5.1
- IBM® Lotus® Domino® 8.5.2
- DB2 Accessories Suite for z/OS V2.1
- DB2 Utilities Suite for z/OS V10.1
- DB2 High Performance Unload for z/OS V4.1
- IBM Transaction Analysis Workbench for z/OS V1.1
- DB2 Administration Tool for z/OS V10.1
- DB2 Object Comparison Tool for z/OS V10.1
- DB2 Buffer Pool Analyzer for z/OS V5.1
- DB2 SQL Performance Analyzer for z/OS V4.1

### October 24

- DB2 High Performance Unload for z/OS V4.1
- IBM Transaction Analysis Workbench for z/OS V1.1
- DB2 Administration Tool for z/OS V10.1
- DB2 Object Comparison Tool for z/OS V10.1
- DB2 Buffer Pool Analyzer for z/OS V5.1
- DB2 SQL Performance Analyzer for z/OS V4.1
- DB2 Buffer Pool Analyzer for z/OS V5.1
- QMF Classic Edition, V10.1
- QMF Enterprise Ed. V10.1
- InfoSphere Classic Change Data Capture for z/OS
- InfoSphere IMS Replication for z/OS
- InfoSphere Classic Federation Server for z/OS v10.1

### October 25

- IBM® Lotus® Connections 3.0
- IBM System z Solution Edition for Lotus Collaboration

### October 26

- IBM® Lotus® Forms 4.0
- IBM Security zSecure suite V1.12
- Rational Team Concert v3.0
- Rational Developer for System z v8.0.1
- Rational Developer for zEnterprise v8.0.1
- Rational Developer for System z Unit Test v8.0.1
- Rational Business Developer 8.0
- Rational Asset Analyzer 6.0
- Rational Asset Analyzer for System z
- Rational Programming Patterns for System z v8.0

### November 9

- IBM WebSphere Lombardi Edition V7.1 for zLinux

### November 16

- IBM® Advanced Case Manager
- IBM® FileNet® Business Process Manager (BPM) Version 5.0

# IBM System z Software

*Seamlessly integrated with  
zEnterprise for optimal cost savings  
and performance*

We are delivering a new generation of integrated hardware and software

- Scales without complexity and delivers business process aligned infrastructure in a heterogeneous environment
- Provides real-time advanced analytics
- Unifies multiplatform development and team collaboration to work as a single, integrated service delivery platform
- Exploits the advantages of integrated service management
- Extends the value of Linux on System z with collaborative tools



# Trademarks

The following are trademarks of the International Business Machines Corporation in the United States and/or other countries.

IBM*	FICON*	POWER*	zEnterprise
IBM (logo)*	Filenet*	RACF*	z/OS*
ibm.com*	IMS	Rational*	z/VM*
AIX*	InfoSphere	System z*	
CICS*	Lotus*	System z10	
Cognos*	NetView*	Tivoli*	
DataPower*	OMEGAMON*	WebSphere*	
DB2*	Optim		
Domino*			

\* Registered trademarks of IBM Corporation

Adobe, the Adobe logo, PostScript, and the PostScript logo are either registered trademarks or trademarks of Adobe Systems Incorporated in the United States, and/or other countries.

Cell Broadband Engine is a trademark of Sony Computer Entertainment, Inc. in the United States, other countries, or both and is used under license there from.

Java and all Java-based trademarks are trademarks of Sun Microsystems, Inc. in the United States, other countries, or both.

Microsoft, Windows, Windows NT, and the Windows logo are trademarks of Microsoft Corporation in the United States, other countries, or both.

InfiniBand is a trademark and service mark of the InfiniBand Trade Association.

Intel, Intel logo, Intel Inside, Intel Inside logo, Intel Centrino, Intel Centrino logo, Celeron, Intel Xeon, Intel SpeedStep, Itanium, and Pentium are trademarks or registered trademarks of Intel Corporation or its subsidiaries in the United States and other countries.

UNIX is a registered trademark of The Open Group in the United States and other countries.

Linux is a registered trademark of Linus Torvalds in the United States, other countries, or both.

ITIL is a registered trademark, and a registered community trademark of the Office of Government Commerce, and is registered in the U.S. Patent and Trademark Office.

IT Infrastructure Library is a registered trademark of the Central Computer and Telecommunications Agency, which is now part of the Office of Government Commerce.

## Notes:

Performance is in Internal Throughput Rate (ITR) ratio based on measurements and projections using standard IBM benchmarks in a controlled environment. The actual throughput that any user will experience will vary depending upon considerations such as the amount of multiprogramming in the user's job stream, the I/O configuration, the storage configuration, and the workload processed. Therefore, no assurance can be given that an individual user will achieve throughput improvements equivalent to the performance ratios stated here.

IBM hardware products are manufactured from new parts, or new and serviceable used parts. Regardless, our warranty terms apply.

All customer examples cited or described in this presentation are presented as illustrations of the manner in which some customers have used IBM products and the results they may have achieved. Actual environmental costs and performance characteristics will vary depending on individual customer configurations and conditions.

This publication was produced in the United States. IBM may not offer the products, services or features discussed in this document in other countries, and the information may be subject to change without notice. Consult your local IBM business contact for information on the product or services available in your area.

All statements regarding IBM's future direction and intent are subject to change or withdrawal without notice, and represent goals and objectives only.

Information about non-IBM products is obtained from the manufacturers of those products or their published announcements. IBM has not tested those products and cannot confirm the performance, compatibility, or any other claims related to non-IBM products. Questions on the capabilities of non-IBM products should be addressed to the suppliers of those products.

Prices subject to change without notice. Contact your IBM representative or Business Partner for the most current pricing in your geography.