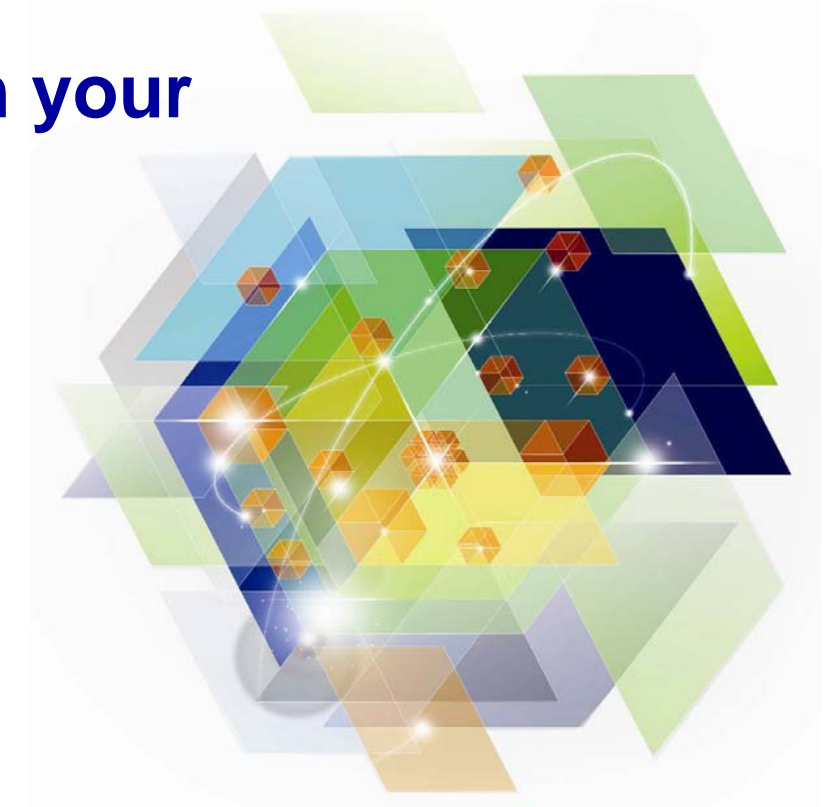




Enterprise Modernization - Realizing Greater Value from your IT Investments



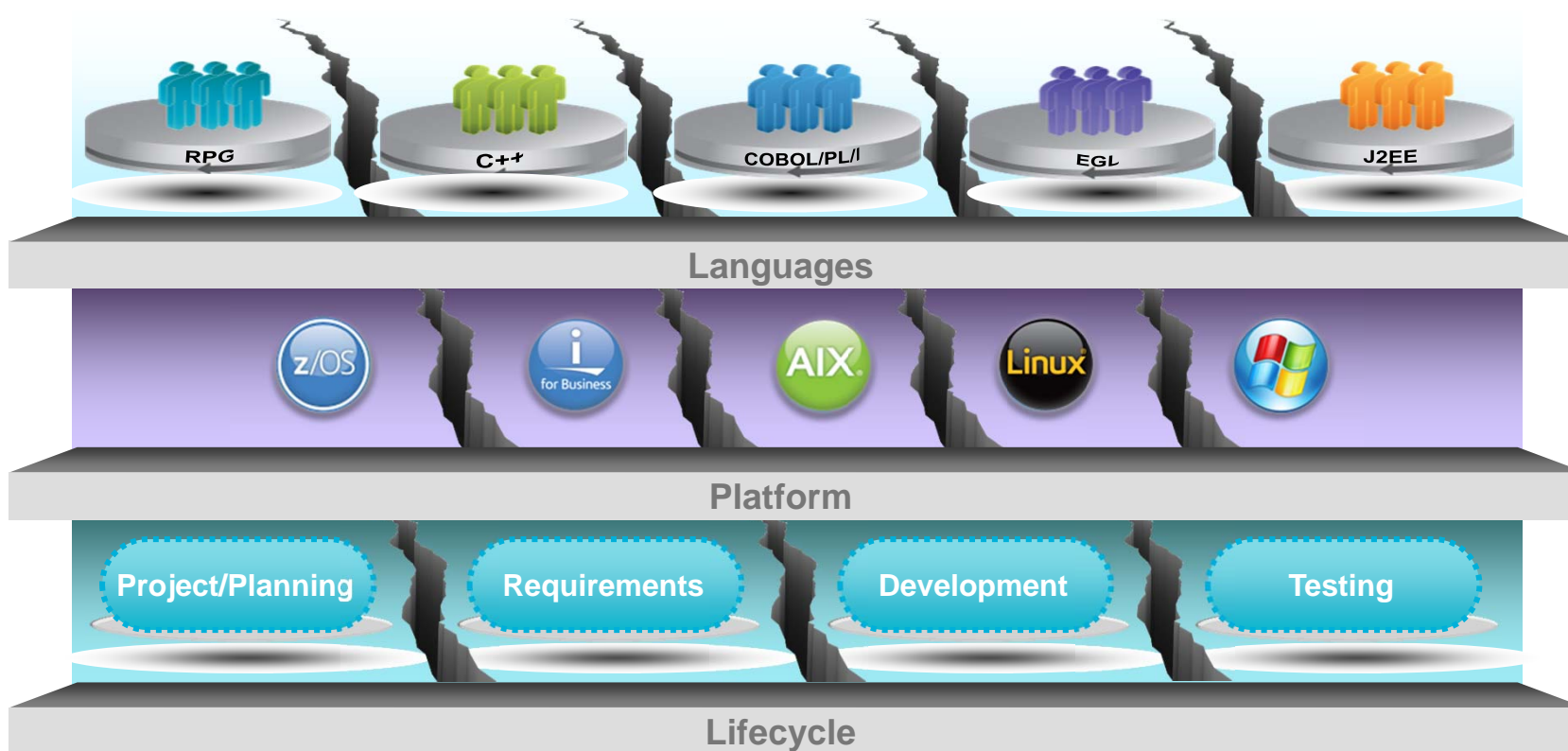
Hayden Lindsey
Vice President & Distinguished Engineer
Rational Enterprise Modernization and Emerging Technologies

20 March 2012

© 2012 IBM Corporation

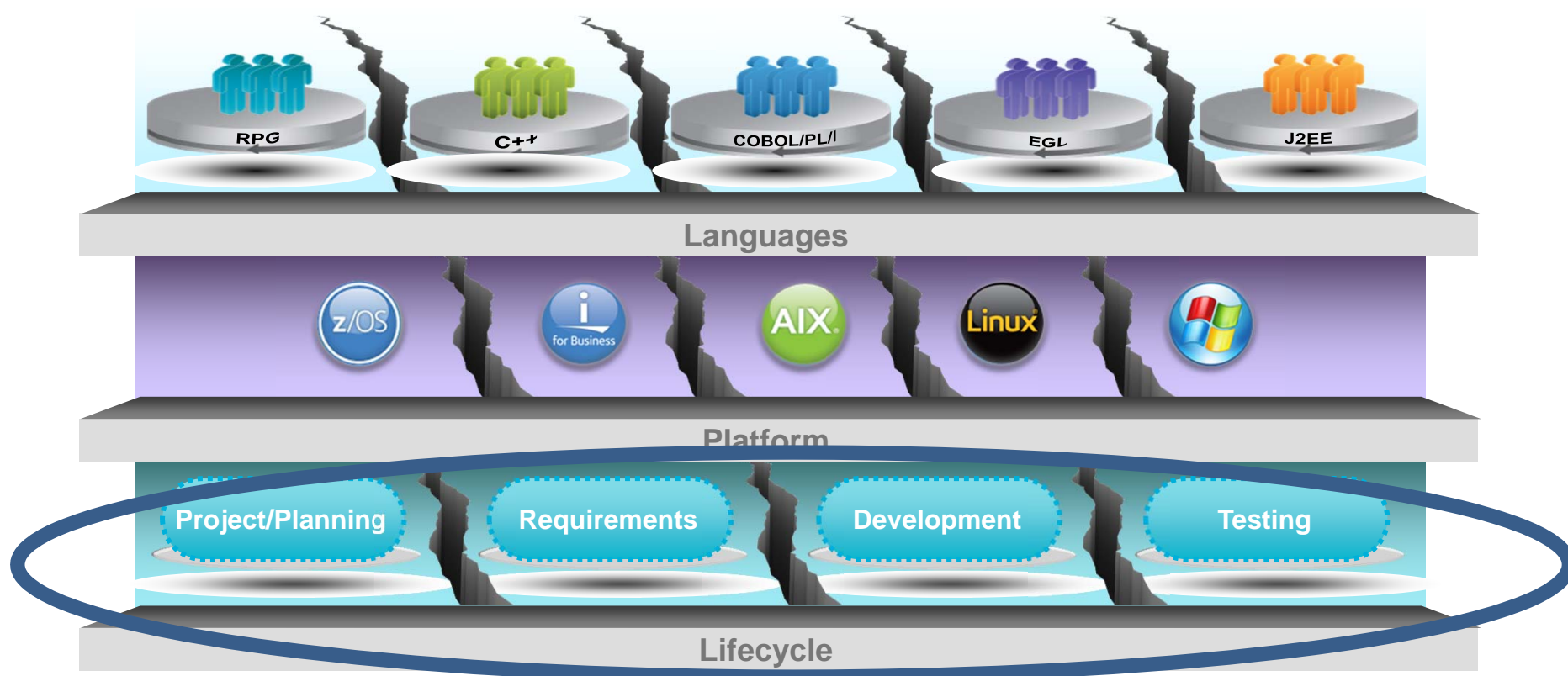
Enterprise Integration Barriers

A main deterrent to recognizing greater value from your IT investments

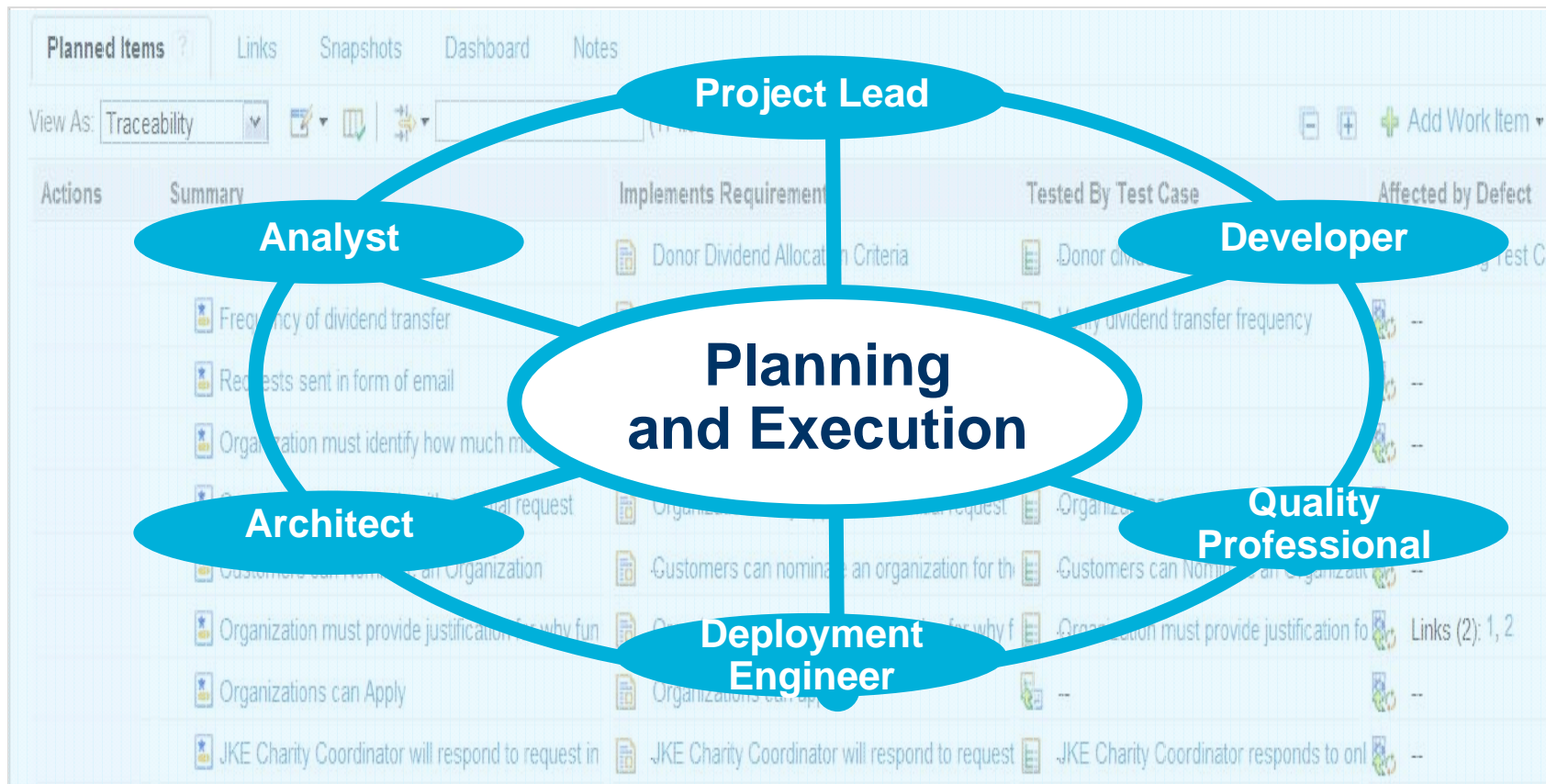


Enterprise Integration Barriers

A main deterrent to recognizing greater value from your IT investments



Imperative 1: Real-Time Planning



Improves time to delivery by:

- ✓ Providing a single plan spanning all stages of the development lifecycle
- ✓ Integrating planning with execution
- ✓ Allowing everyone to participate interactively in maintaining plan currency
- ✓ Helping teams respond timely to unexpected changes

Imperative 2: Lifecycle Traceability

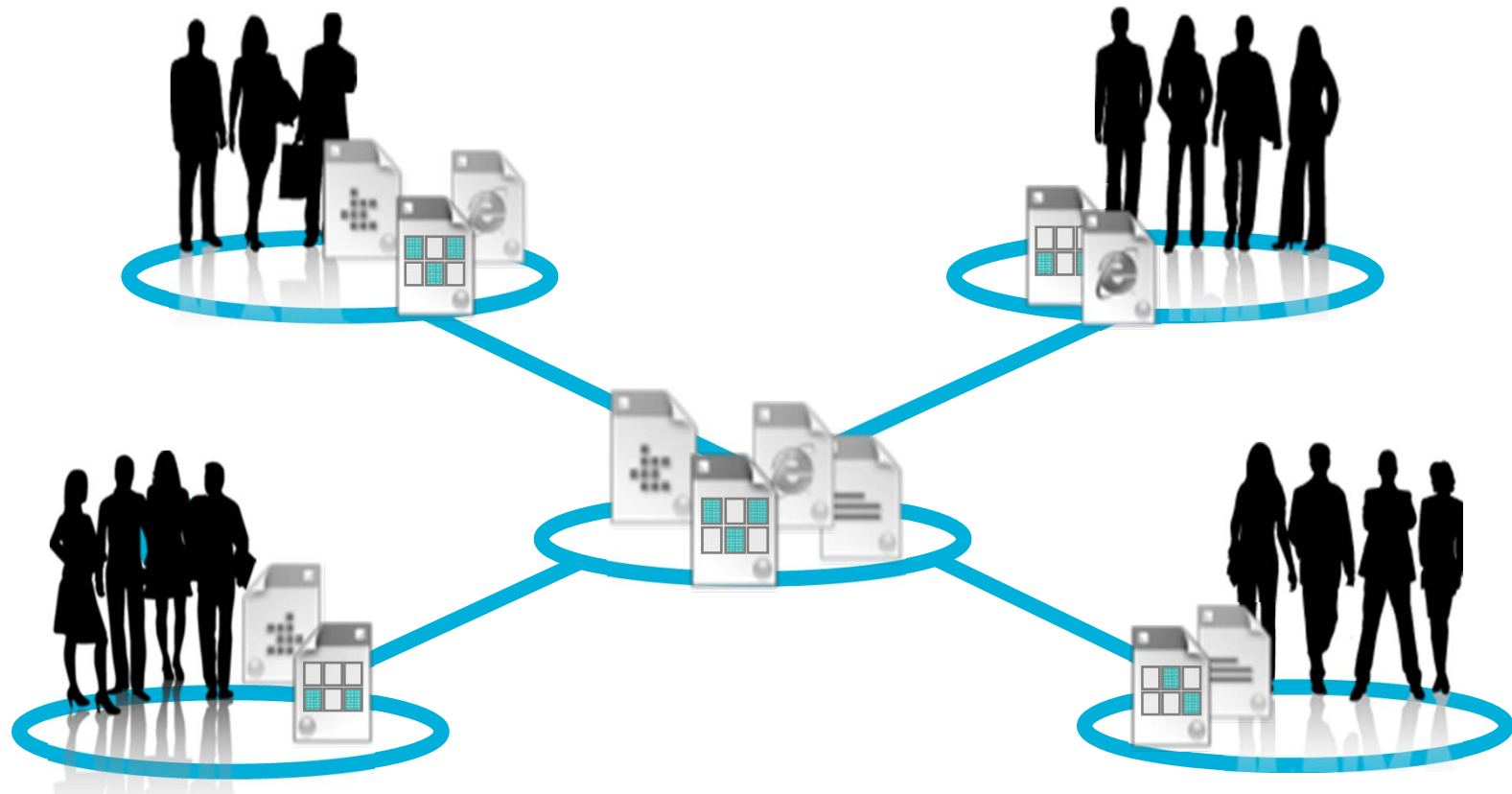
Instant access to details from any point in the development process



Improves quality by:

- ✓ Enabling impact analysis across all artifact types
- ✓ Helping to quickly understand context by tracing links to associated artifacts, e.g. corresponding requirements
- ✓ Delivering transparency enabling fully informed decisions

Imperative 3: In-Context Collaboration

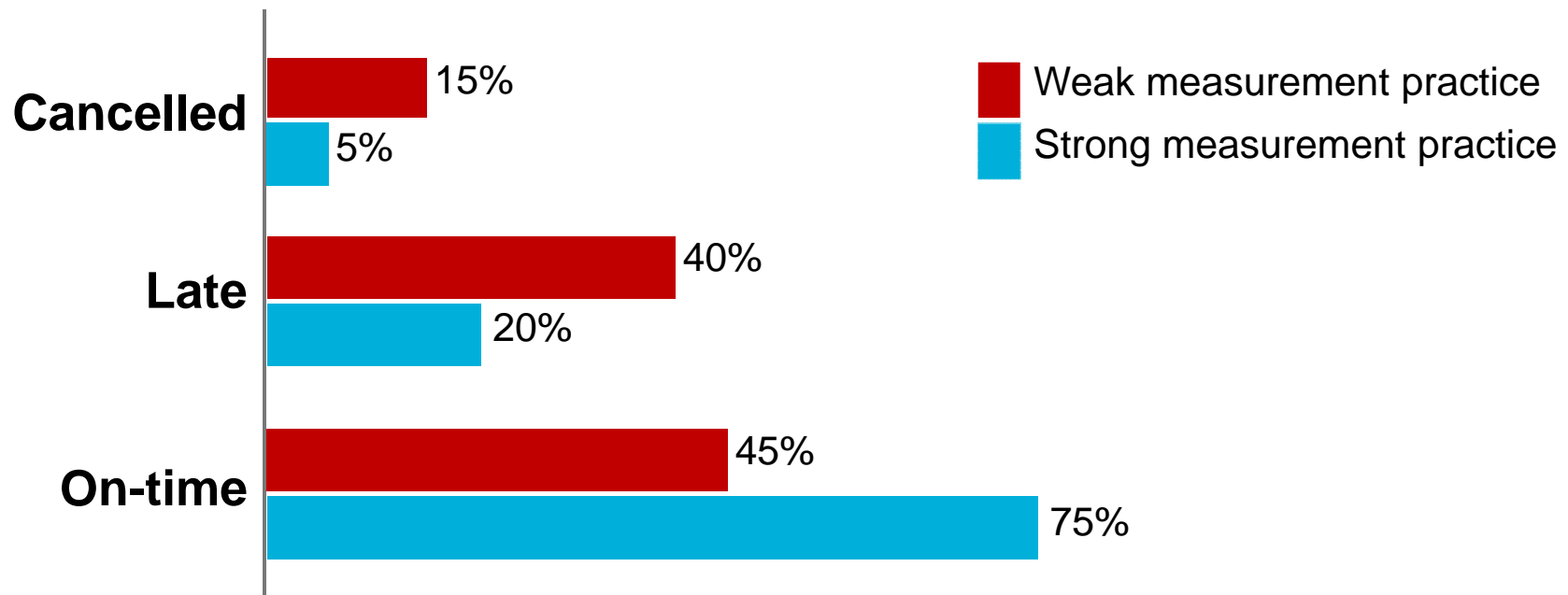


Maximizes time to value by:

- ✓ Making information immediately accessible to the team in the context of their work
- ✓ Empowering teams to collaborate and regularly review software artifacts
- ✓ Providing a single source of truth hosted in a shared repository for all team members

Imperative 4: Development Intelligence

Measurement Practices Impact Project Success

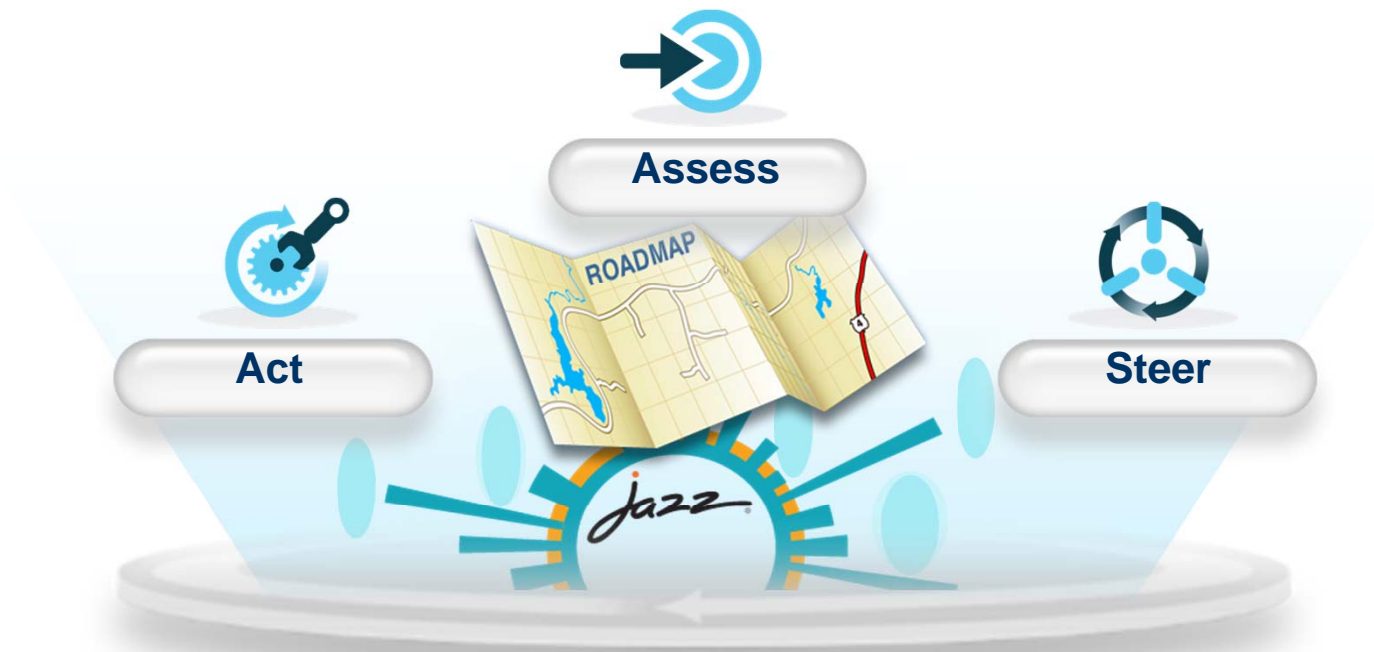


Source: Capers Jones, *Measurement, Metrics and Industry Leadership*, 2009 and *Software Engineering Best Practices*, McGraw Hill, 2010.

Improves predictability by:

- ✓ Applying business intelligence techniques to software and systems development
- ✓ Enabling fact-based decision making
- ✓ Steering projects and programs to deliver on-time

Imperative 5: Continuous Improvement



“Successful analytics requires taking it beyond software and reporting, and into the realm of management practices and operations improvement.”

Information Management Online, February 23, 2011

Reduces cost by:

- ✓ Delivering “out of the box”, customizable, development process templates
- ✓ Improving delivery through ongoing adoption of best practices and automation
- ✓ Promoting both incremental and breakthrough improvement

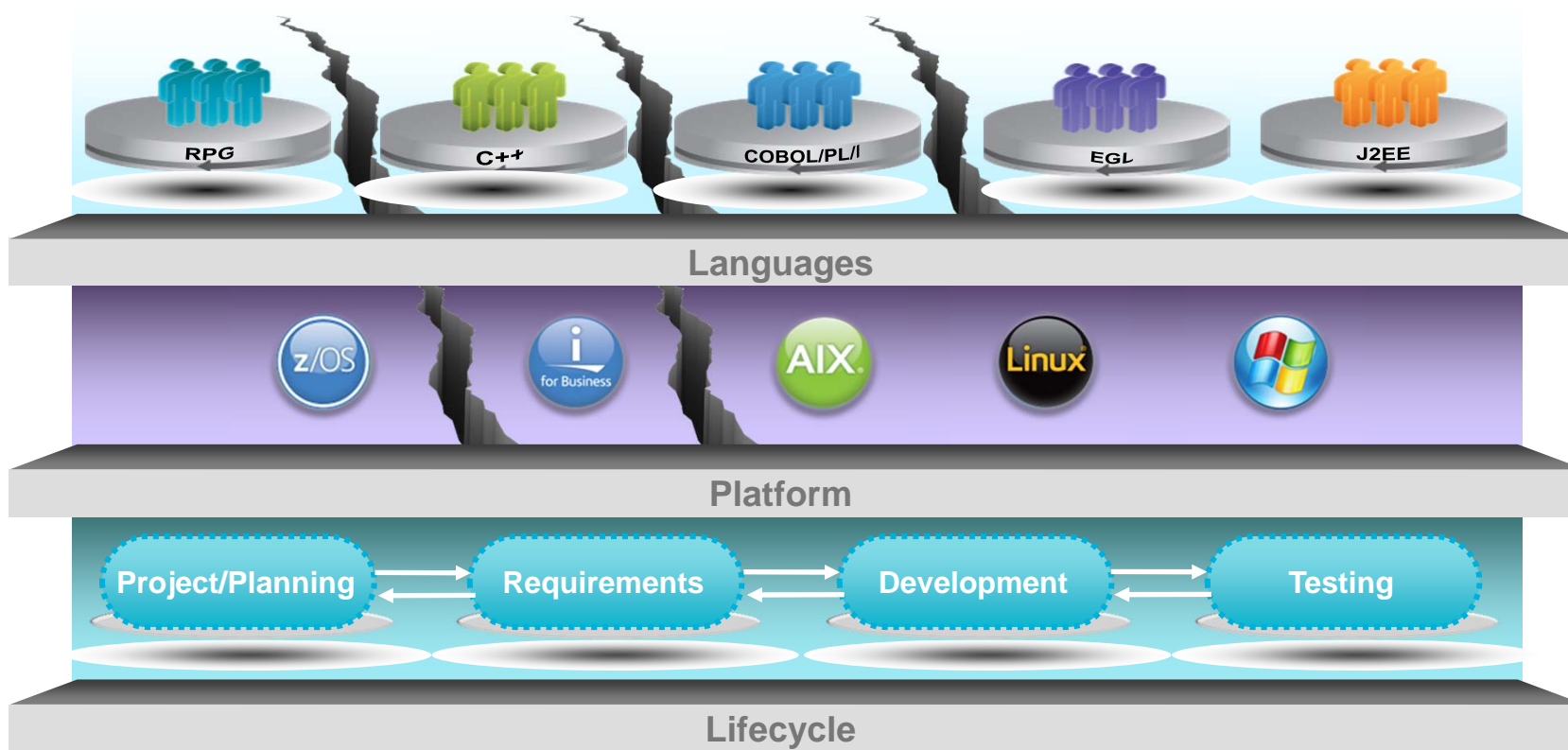
The Five Imperatives of Application Lifecycle Management

Improve productivity 4-6% annually

1. Accelerate **time to delivery** with real-time planning
2. Improve **quality** with lifecycle traceability
3. Maximize **time to value** with in-context collaboration
4. Refine **predictability** with development intelligence
5. Reduce **costs** with continuous improvement

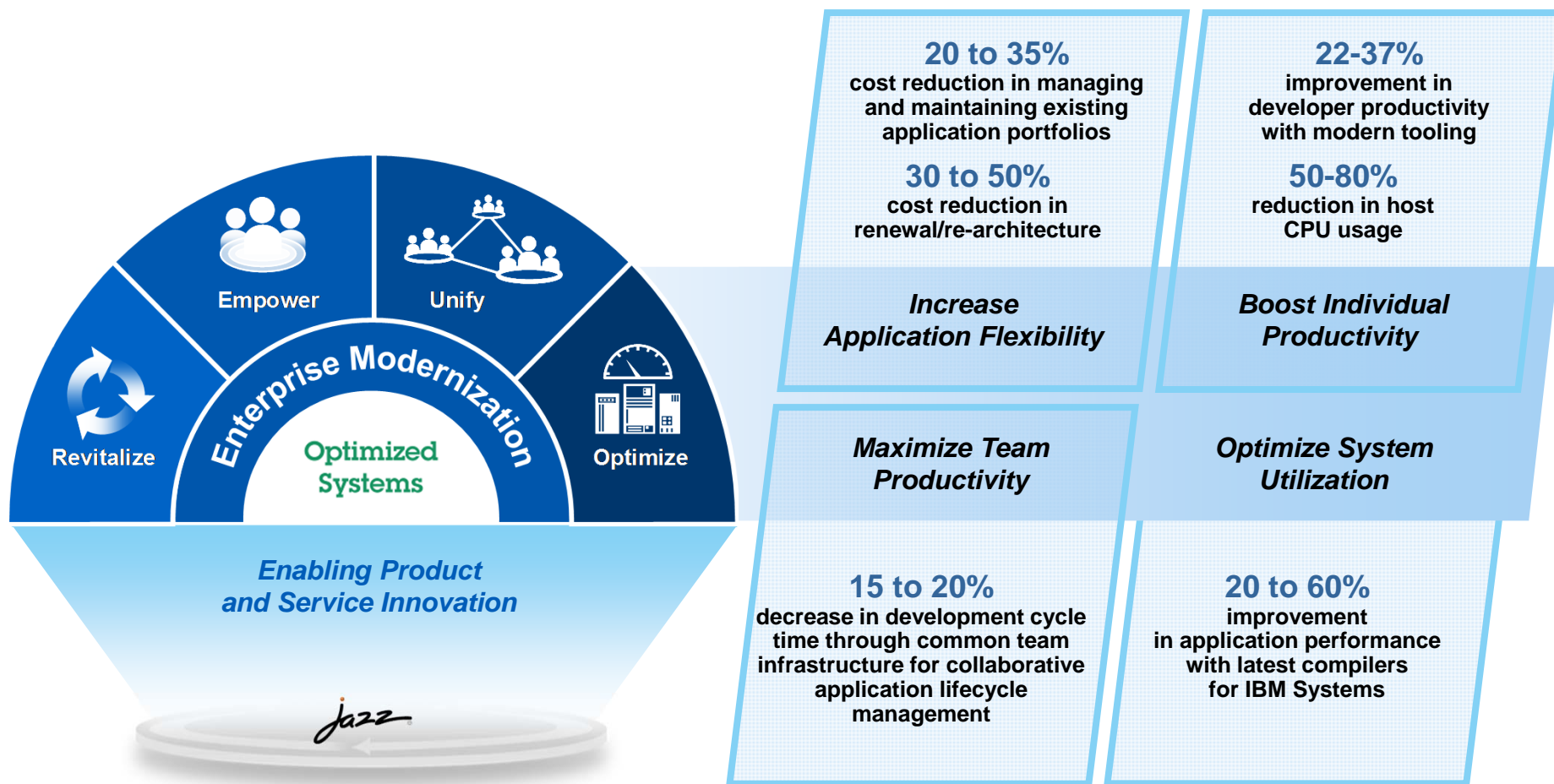


Remaining Enterprise Integration Barriers



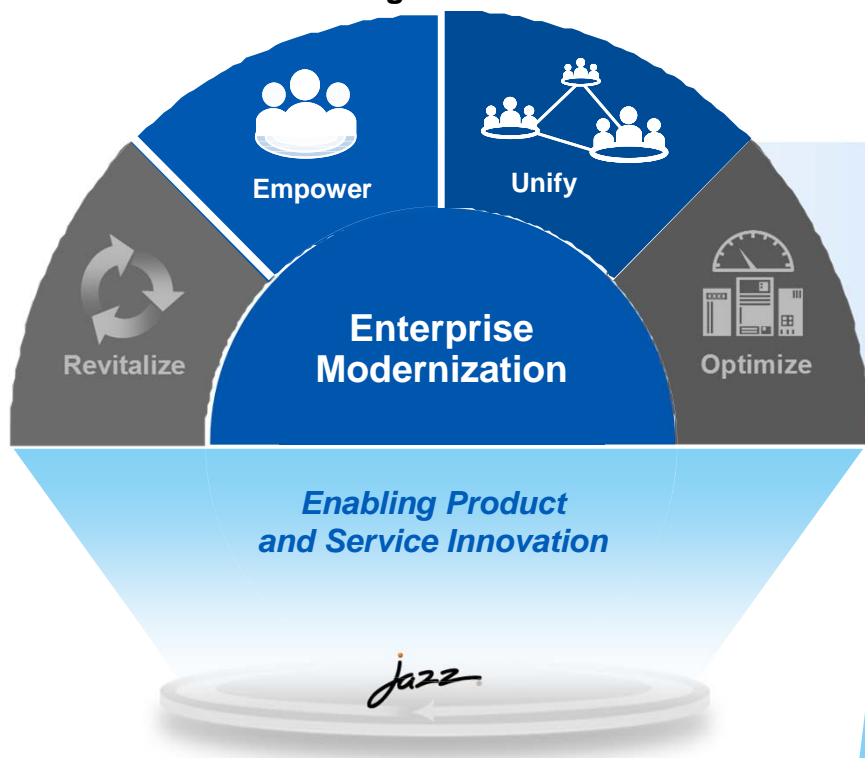
IBM Enterprise Modernization

An incremental and continuous approach to achieving greater value and performance from your IT investments



Boost productivity and accelerate innovation with modern skills; Maximize organizational agility by unifying development teams

- Modern IDEs for all platforms and languages
- Modern business languages
- Enterprise training programs, communities and resources
- Consolidated and agile team infrastructure



20 to 35%
cost reduction in managing
and maintaining existing
application portfolio

30 to 50%
cost reduction in
renewal/re-architecture

*Increase
Application Flexibility*

22-37%
improvement in
developer productivity
with modern tooling

50-80%
reduction in host
CPU usage

*Boost Individual
Productivity*

*Maximize Team
Productivity*

*Optimize System
Utilization*

15 to 20%
decrease in development cycle
time through common team
infrastructure for collaborative
application lifecycle
management

20 to 60%
improvement
in application performance
with latest compilers
for IBM Systems

COBOL Fun Facts

200x more COBOL transactions/day than **Google searches**

**5 billion new COBOL
LOC yearly**

**250 billion LOC of
COBOL** in existence

COBOL training **no longer offered** at most universities

80% of all active code is
COBOL

85% of all transactions are
COBOL

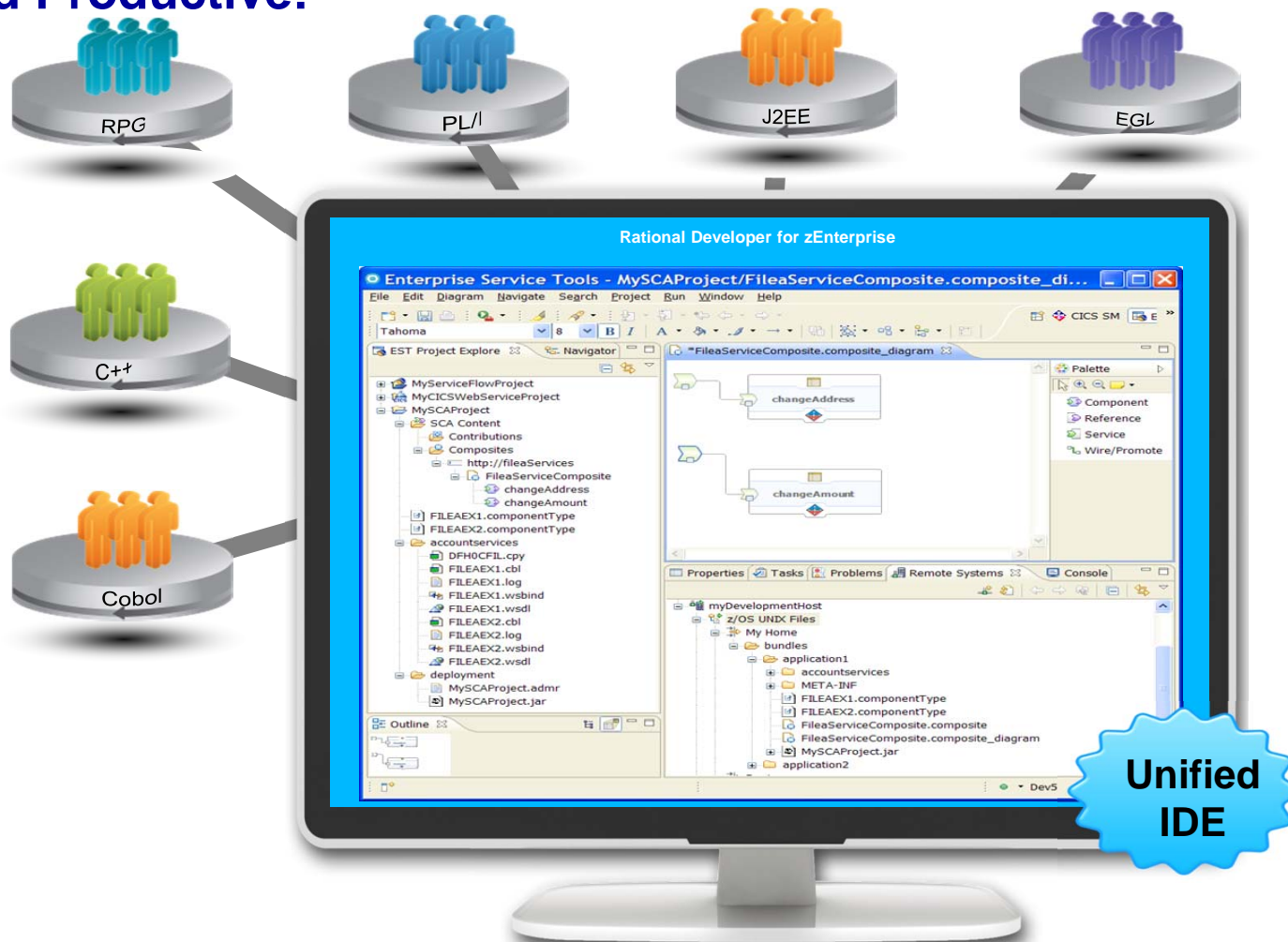
ISPF...Modern? Productive?

```

File Edit Edit_Settings Menu Utilities Compilers Test Help
EDIT
***** DDS0001.TEST.COBOL (BNCHS601) - 01.07 Columns 00001 00072
***** Top of Data *****
000001 IDENTIFICATION DIVISION.
000002 PROGRAM-ID. BNCHS601.
000003 AUTHOR. JON SAYLES.
000004 INSTALLATION. COBOL DEV Center.
000005 DATE-WRITTEN. 01/23/88.
000006 DATE-COMPILED. 01/23/88.
000007 SECURIY. CONFIDENTIAL PATIENT DATA.
000008
000009 *****
000010 *****
000011 *REMARKS.
000012 *
Command ==>
File Edit Edit_Settings Menu Utilities Compilers Test Help
Scroll ==> PAGE
VIEW
DDS0001.TEST.COBOL (BNCHS602) - 01.02 Columns 00001 00072
000256 100-MAINLINE.
000257 MOVE "100-MAINLINE" TO PARA-NAME.
x88858 * DISPLAY "100-MAINLINE".
000259 * Validate patient type and insurance coverage
000260 * PERFORM 300-FIELD-EDITS THRU 300-EXIT.
000261
000262 IF RECORD-ERROR-FOUND
000263 ADD +1 TO RECORDS-IN-ERROR
000264 PERFORM 710-WRITE-TRMTERR THRU 710-EXIT
000265
Command ==>
File Edit Edit_Settings Menu Utilities Compilers Test Help
Scroll ==> PAGE
MA a 24/006

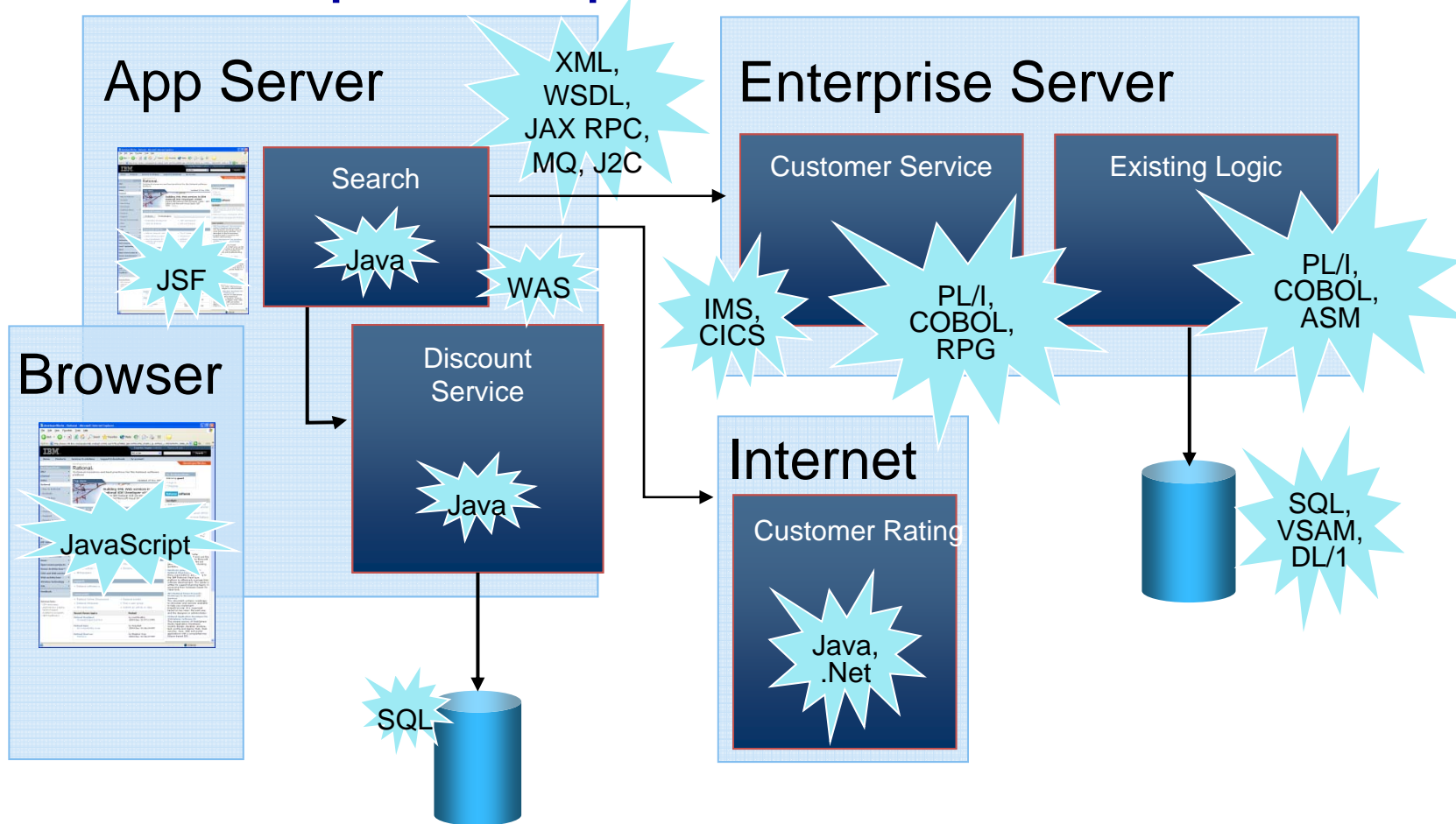
```

Modern and Productive!

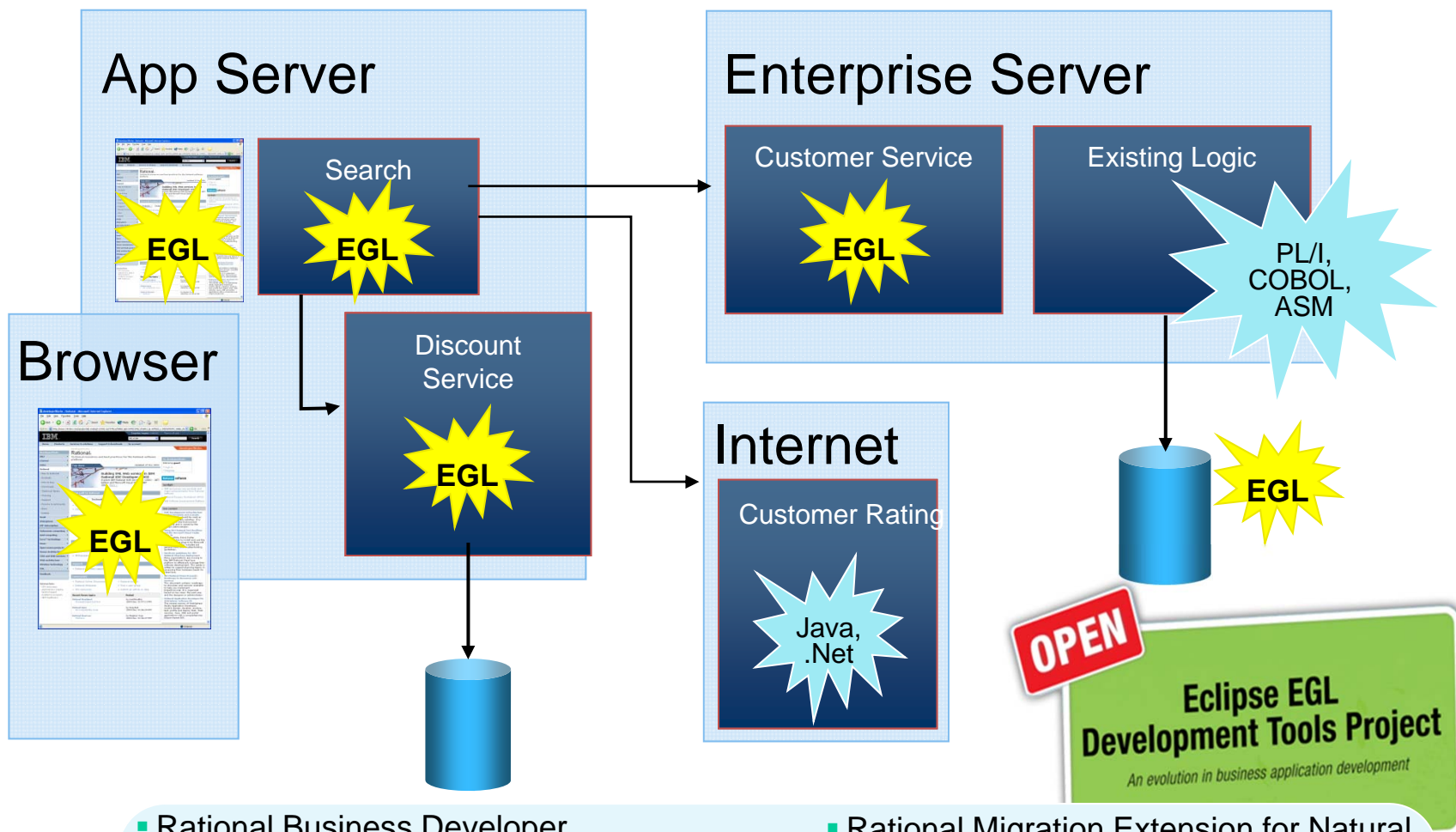


- Rational Developer for System z
- Rational Developer for zEnterprise
- Rational Developer for Power Systems
- Rational Application Developer
- Rational Business Developer
- Rational Programming Patterns for System z

Middleware Complexities Exposed

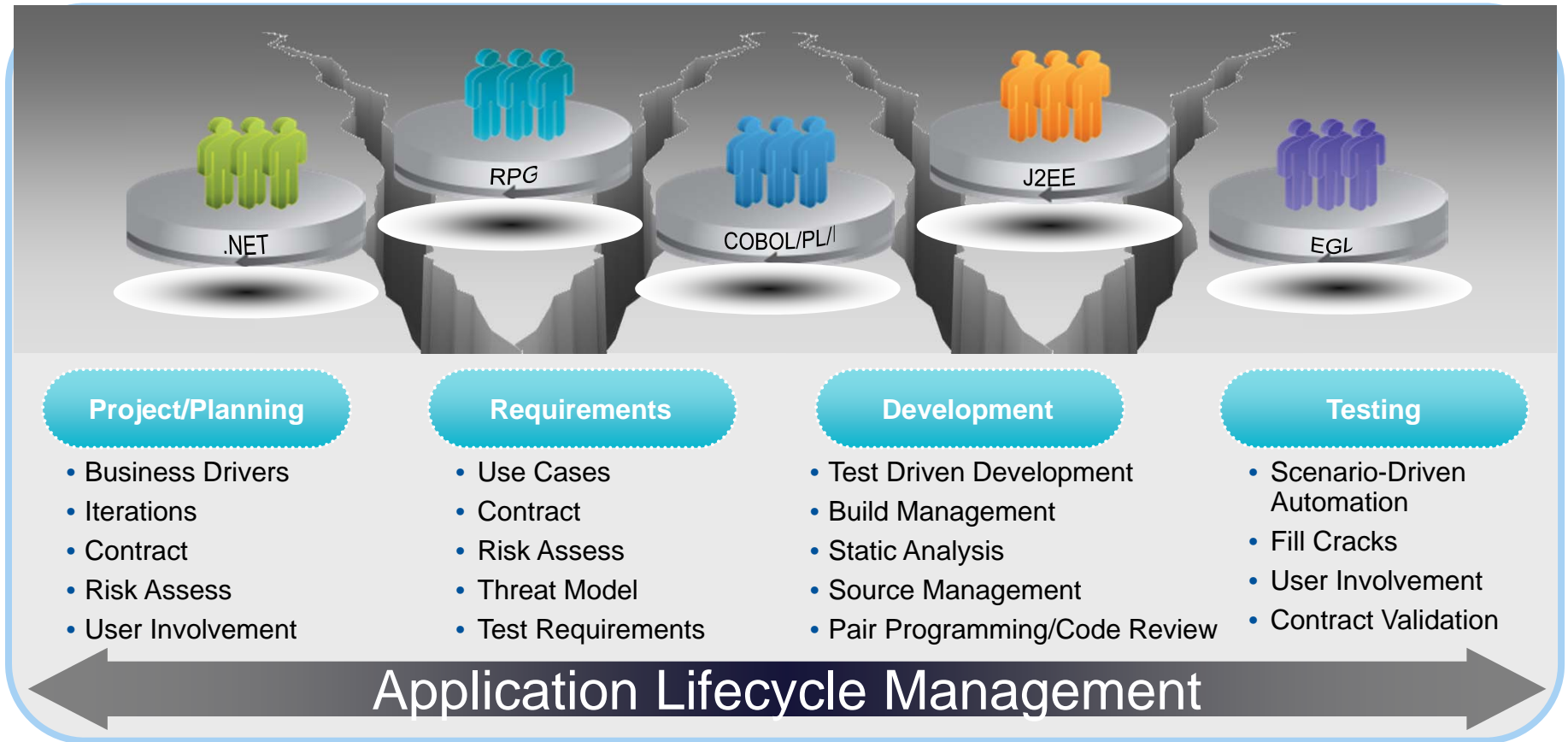


Middleware Complexities Hidden



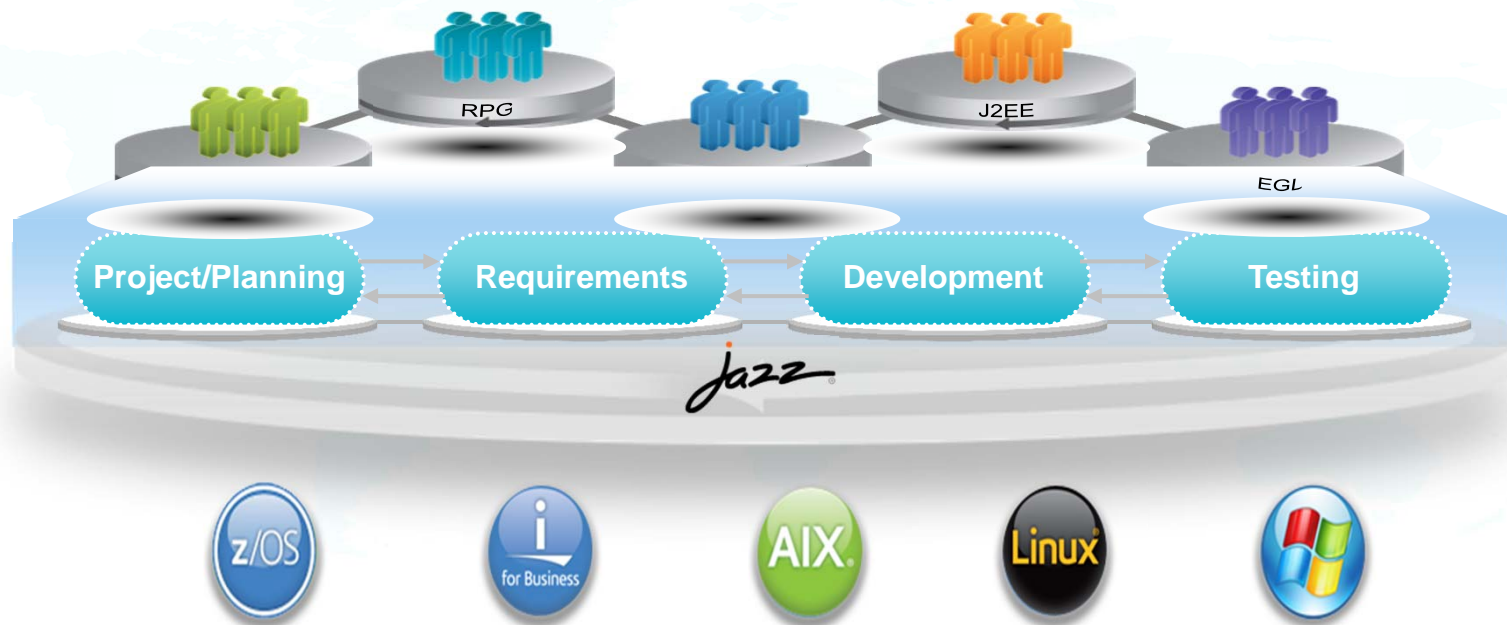
- Rational Business Developer
- Rational Developer for System z with EGL
- Rational Developer for zEnterprise
- Rational Developer for Power Systems
- Rational Developer for I for SOA Construction
- Rational Migration Extension for Natural
- Rational Migration Extension for CA
- Rational Migration Extension for Rich UI
- Rational Migration Extension for IBM i

Disconnected Teams and Infrastructure



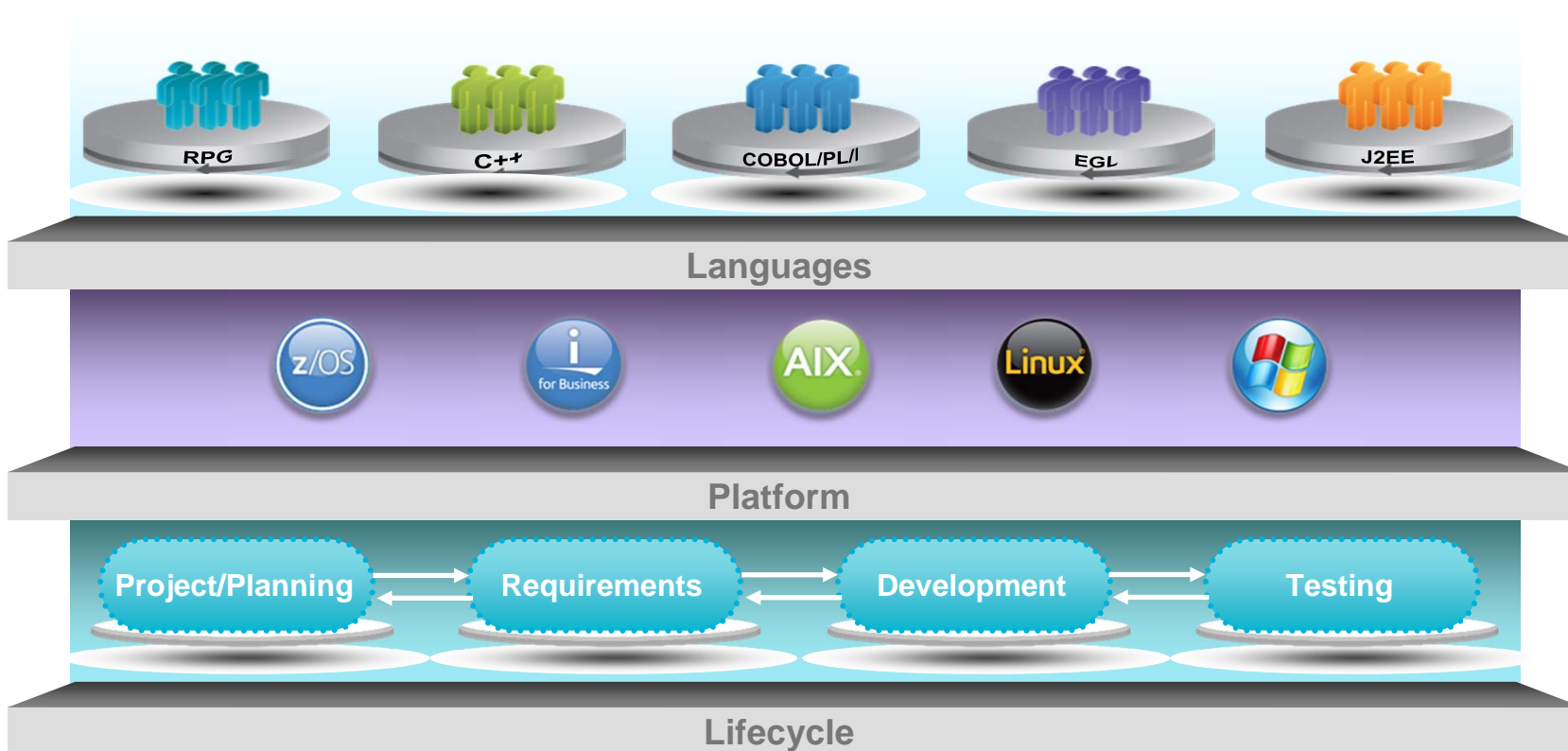
Integrated Teams and Infrastructure

Collaborative Lifecycle Management



- Rational Team Concert
- Rational Requirements Composer
- Rational Software Architect Design Manager
- Rational Quality Manager
- Rational Build Forge

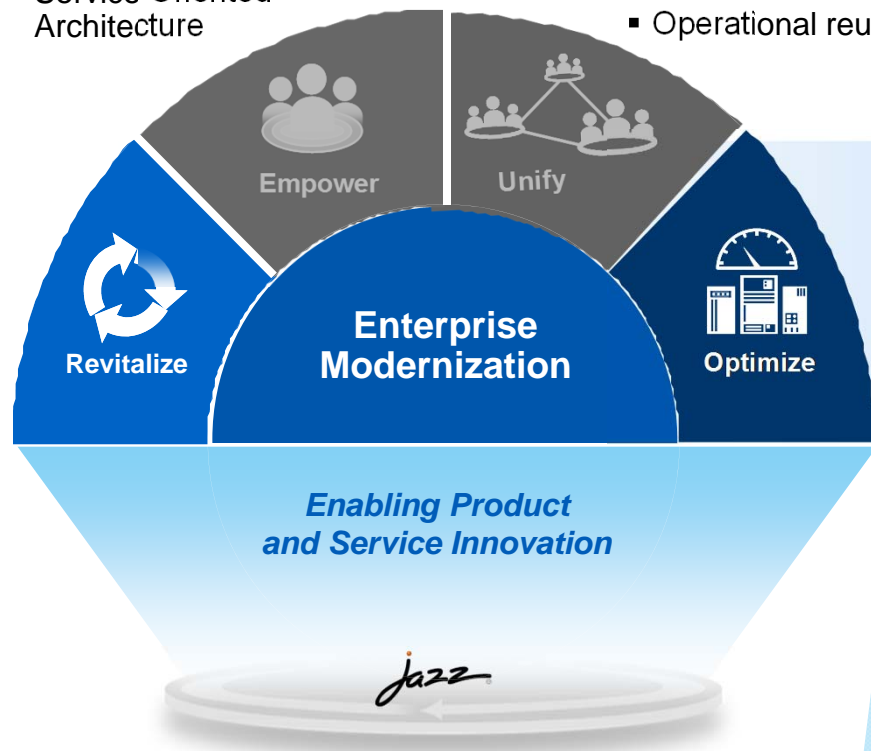
Integrations That Really Do Matter!



Show Videos

Increase flexibility by revitalizing existing application portfolios; Improve responsiveness and costs by optimizing system utilization

- Application portfolio management
- Business intelligence for applications
- Application security
- Mobile channel access
- Service Oriented Architecture
- User interface modernization
- Application transformation tools and services
- Quality across the organization
- Operational reuse
- Free up production MIPS
- Exploit new advanced compiler optimizations



20 to 35%
cost reduction in managing and maintaining existing application portfolios

30 to 50%
cost reduction in renewal/re-architecture

Increase Application Flexibility

22-37%
improvement in developer productivity with modern tooling

50-80%
reduction in host CPU usage

Boost Individual Productivity

Maximize Team Productivity

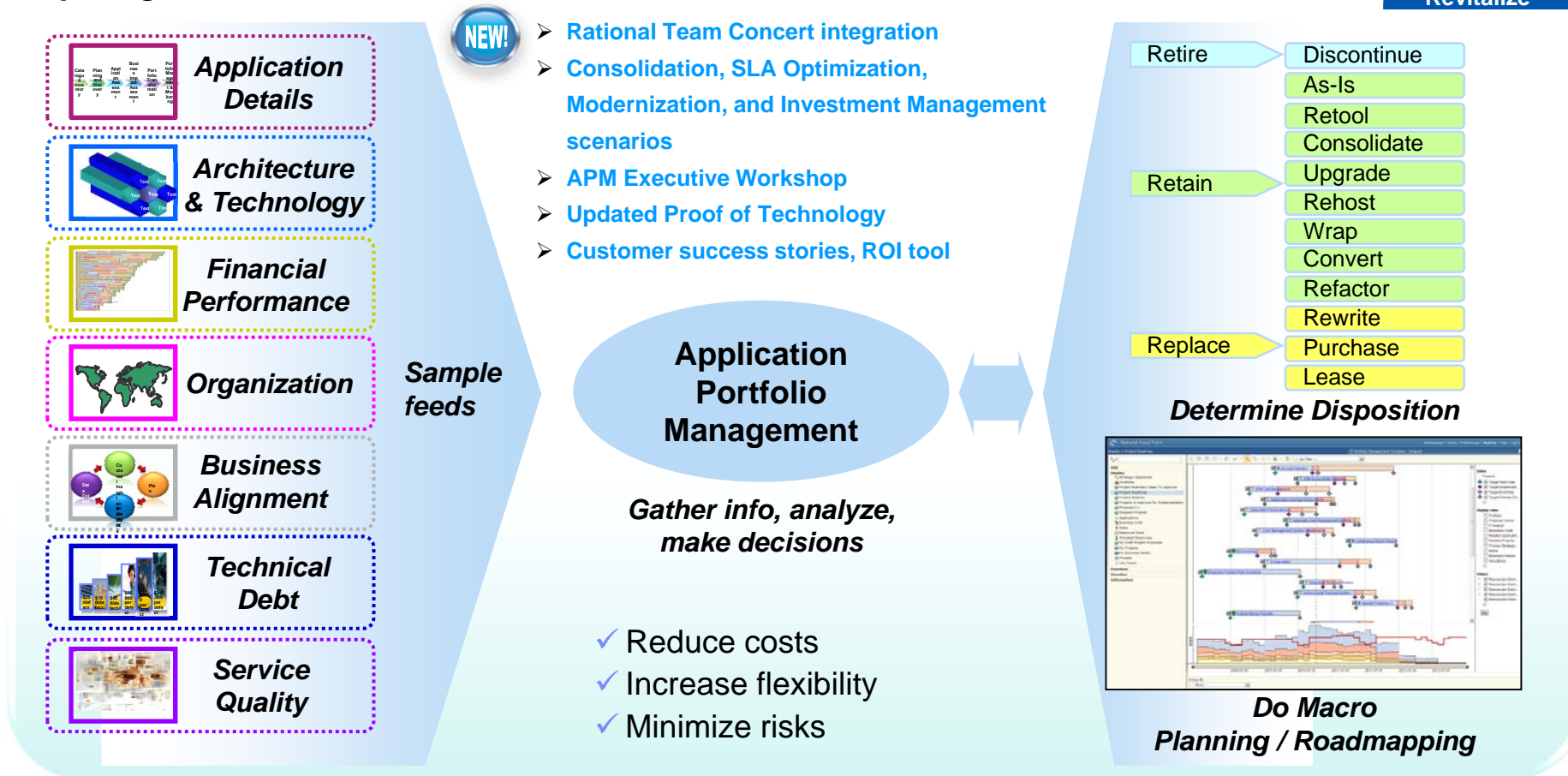
15 to 20%
decrease in development cycle time through common team infrastructure for collaborative application lifecycle management

Optimize System Utilization

20 to 60%
improvement in application performance with latest compilers for IBM Systems

Comprehensive application portfolio management

Helps organizations make faster and better-informed decisions



“Smarter APM and associated application revitalization has enabled IBM’s IT to cut maintenance costs by 20% and defects by 58%.”

— IBM Corporation



Enterprises want to...

Provide compelling and intuitive mobile UIs (B2B, B2E, B2C, M2M) regardless of the end-user platform

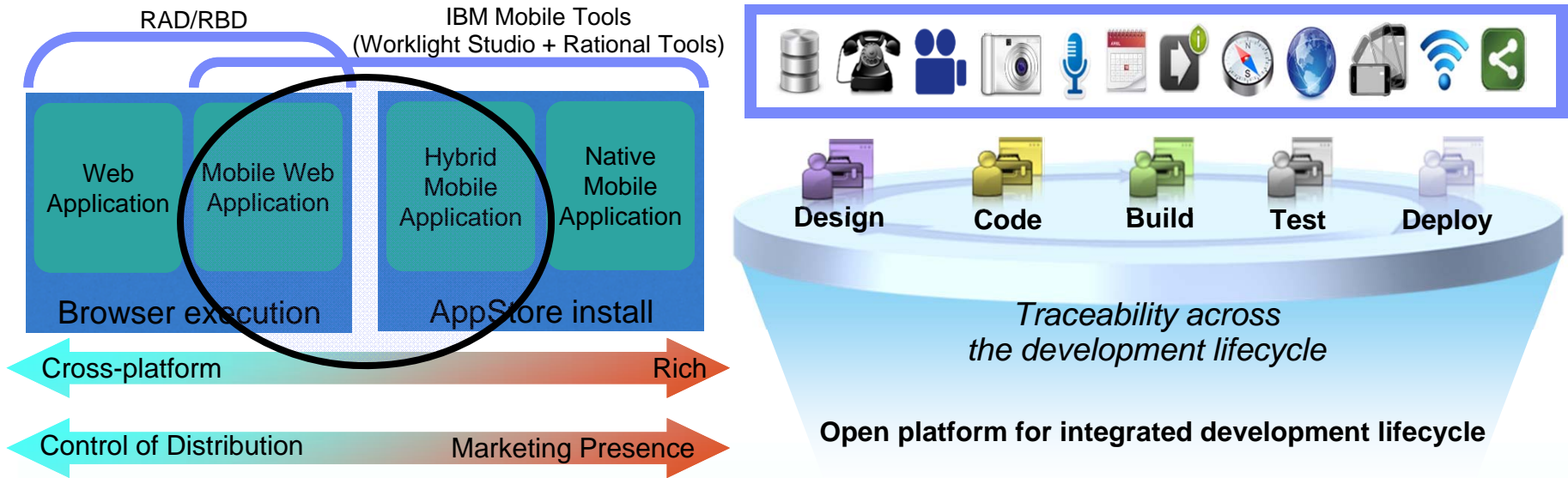


But...

They lack the skills and time to replace or re-write their existing applications, and they cannot afford “one off” applications for each mobile device platform.

Solution: IBM Mobile Tools

Design, code, build, test and deploy your code with mobile in mind and independent of the target platform; Integrate mobile development into your broader enterprise-wide teams, processes and tools

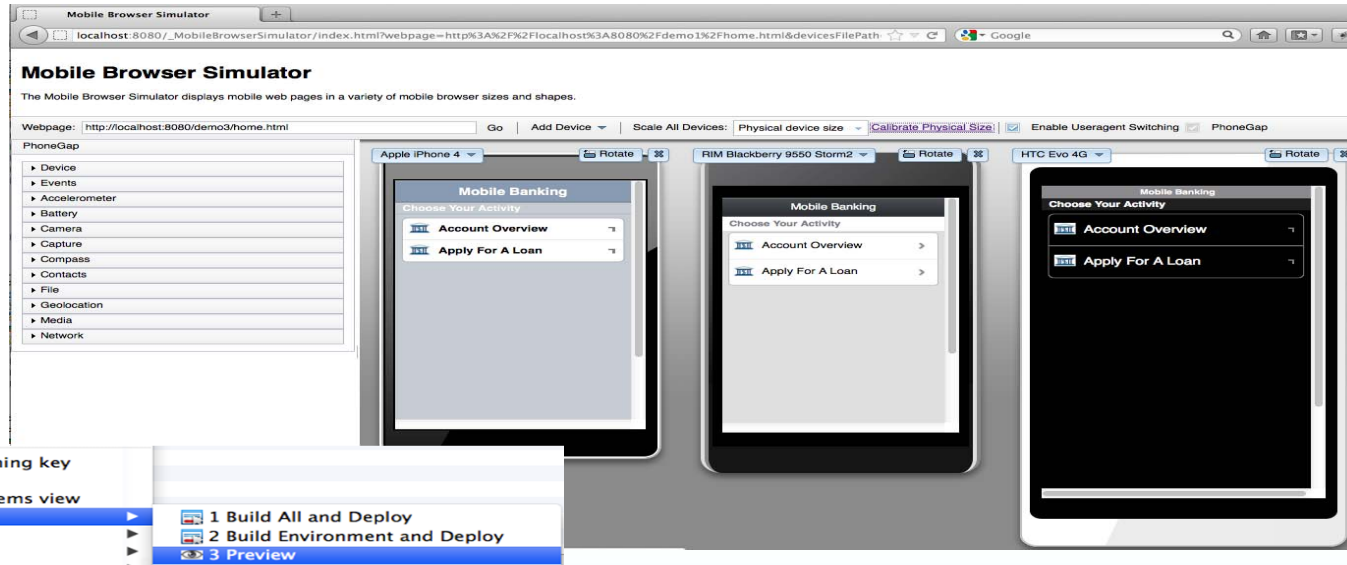


- ✓ Develop all aspects of application—mobile UI, browser UI, services—with one tool family
- ✓ Manage all aspects of development—requirements, modeling, coding, testing, deploying—with one integrated ALM suite
- ✓ Develop once for all mobile platforms—iPhone, Android, Blackberry, etc—with ability to customize for platform uniquenesses

Over 60% of respondents indicate mobility spend in the range of 10–40% of total IT spend and nearly 80% of organizations plan to spend the same or more on mobility in the next 12–18 months — The State of Mobile Enterprise Software in 2011: An IDC Survey of Applications, Platforms, Decisions, and Deployments

Solution: IBM Mobile Tools

Design, code, build, test and deploy your code with mobile in mind and independent of the target platform; Integrate mobile development into your broader enterprise-wide teams, processes and tools

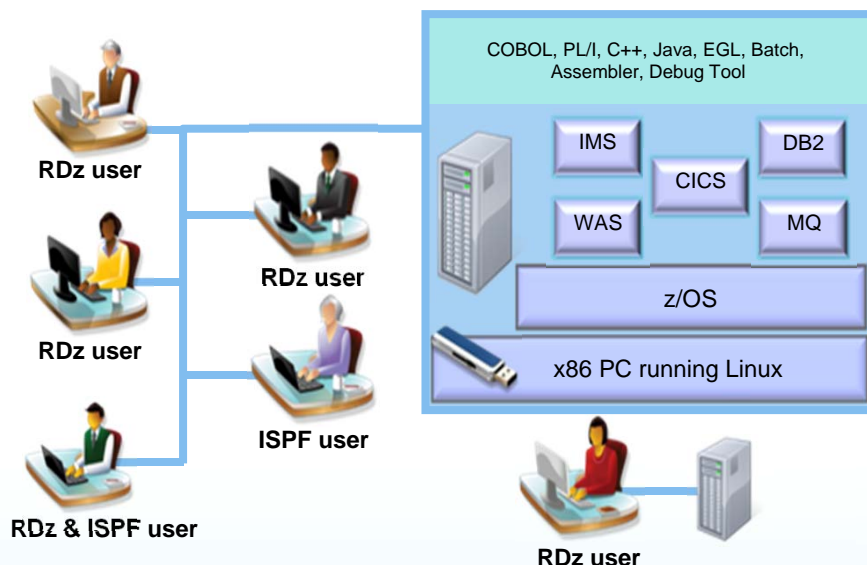


- Rational Application Developer
- Rational AppScan
- Rational Asset Manager
- Rational Business Developer
- Rational Focal Point
- Rational Quality Manager
- Rational Requirements Composer
- Rational Rhapsody
- Rational Team Concert
- Worklight and GREENHAT

Over 60% of respondents indicate mobility spend in the range of 10–40% of total IT spend and nearly 80% of organizations plan to spend the same or more on mobility in the next 12–18 months — The State of Mobile Enterprise Software in 2011: An IDC Survey of Applications, Platforms, Decisions, and Deployments



Test mainframe applications on x86 Linux server



- More flexible licensing options
- UT without RDz
- Floating users
- Support for zEnterprise (z196) architecture
- Support for z/OS 1.12, z/OS 1.13, CICS 4.2, and WAS 8.0

- ✓ Liberate developers to rapidly prototype new applications
- ✓ Free up mainframe development MIPS for production capacity
- ✓ Reduce costs by improving new and existing developer productivity

“RDz Unit Test gives our developers the ability to have their own z/OS environment to prototype, compile, debug and test while our customers make the necessary changes to their test, QA and production environments... This shortens our time to delivery, shortens our project cycles, makes our customers happy and increases our margins...”

At the price... it's a no brainer.”

— Eric Simone, CEO, ClearBlade



Getting started

Next steps to modernize your enterprise applications

www.ibm.com/rational/modernization



- [Try latest System z software for free](#)
- [Sign up for free web-based training](#)
- [Join IBM Rational Cafe Communities](#)
- [Get prescriptive service solutions](#)
- [Success stories](#)
- [Latest news on System z twitter](#)
- [Latest customer videos](#)
- [Latest skills: System z job board](#)

The word 'QUESTIONS' is written in large, white, 3D-style letters. Each letter is filled with a different photograph of a person's face, representing a diverse group of people. The letters have a slight shadow underneath them.

www.ibm.com/software/rational



www.ibm.com/software/rational

© Copyright IBM Corporation 2011. All rights reserved. The information contained in these materials is provided for informational purposes only, and is provided AS IS without warranty of any kind, express or implied. IBM shall not be responsible for any damages arising out of the use of, or otherwise related to, these materials. Nothing contained in these materials is intended to, nor shall have the effect of, creating any warranties or representations from IBM or its suppliers or licensors, or altering the terms and conditions of the applicable license agreement governing the use of IBM software. References in these materials to IBM products, programs, or services do not imply that they will be available in all countries in which IBM operates. Product release dates and/or capabilities referenced in these materials may change at any time at IBM's sole discretion based on market opportunities or other factors, and are not intended to be a commitment to future product or feature availability in any way. IBM, the IBM logo, Rational, the Rational logo, Telelogic, the Telelogic logo, and other IBM products and services are trademarks of the International Business Machines Corporation, in the United States, other countries or both. Other company, product, or service names may be trademarks or service marks of others.

Four key barriers preventing greater return on IT investments

Decades of application investments



“We don’t understand the effort, risk and impact of modernizing our legacy applications.”

Islands of skills, languages and platforms



“Our skills gap keeps growing. How do we stay current with all the language and technology changes?”

Poorly integrated teams



“We need to enable our teams to collaborate across platforms, languages, and environments.”

Infrastructure inefficiency



“We need a cost effective way to improve our infrastructure efficiency and free up capacity to handle more workload.”

IBM enterprise modernization solutions

Achieving greater value and performance from your IT investments

Revitalize Applications

- ✓ Cut maintenance costs and project risks by understanding and managing application portfolios
- ✓ Increase flexibility by modernizing and reusing existing application assets

Empower People

- ✓ Boost developer productivity with a common IDE and modern business language for multiplatform applications

Unify teams

- ✓ Increase organization agility by unifying teams with a collaborative team infrastructure for all platforms

Optimize Infrastructure

- ✓ Free up development MIPS for production use by offloading development and test activities
- ✓ Reduce capital expenses by maximizing application performance on existing hardware

