

# BIG DATA AND THE ENTERPRISE

*A PERSPECTIVE FROM FEATURED GARTNER ANALYST  
DONALD FEINBERG*

Donald Feinberg, Vice President and Distinguished Analyst,  
Gartner Inc.

Mark Simmonds, IBM Enterprise Architect and Senior Product  
Marketing Manager, IBM Software Group

July 11, 2013

Featured Analyst Firm

**Gartner**



# Agenda

- Big data in the enterprise
- An analyst's perspective
- Making big data a reality - IBM System z Information Management solutions
- Summary and Call to Action
- Q&A



# On a Smarter Planet, Unprecedented Changes are Occurring



- Business models under constant **pressure**
- Customers are more **demanding** and connected
- Great **relationships** trump great products



# Big Data is All Data and All Paradigms

## Transactional & Application Data



- Volume
- Structured
- Throughput

## Machine Data



- Velocity
- Structured
- Ingestion

## Social Data



- Variety
- Unstructured
- Veracity

## Enterprise Content



- Variety
- Unstructured
- Volume

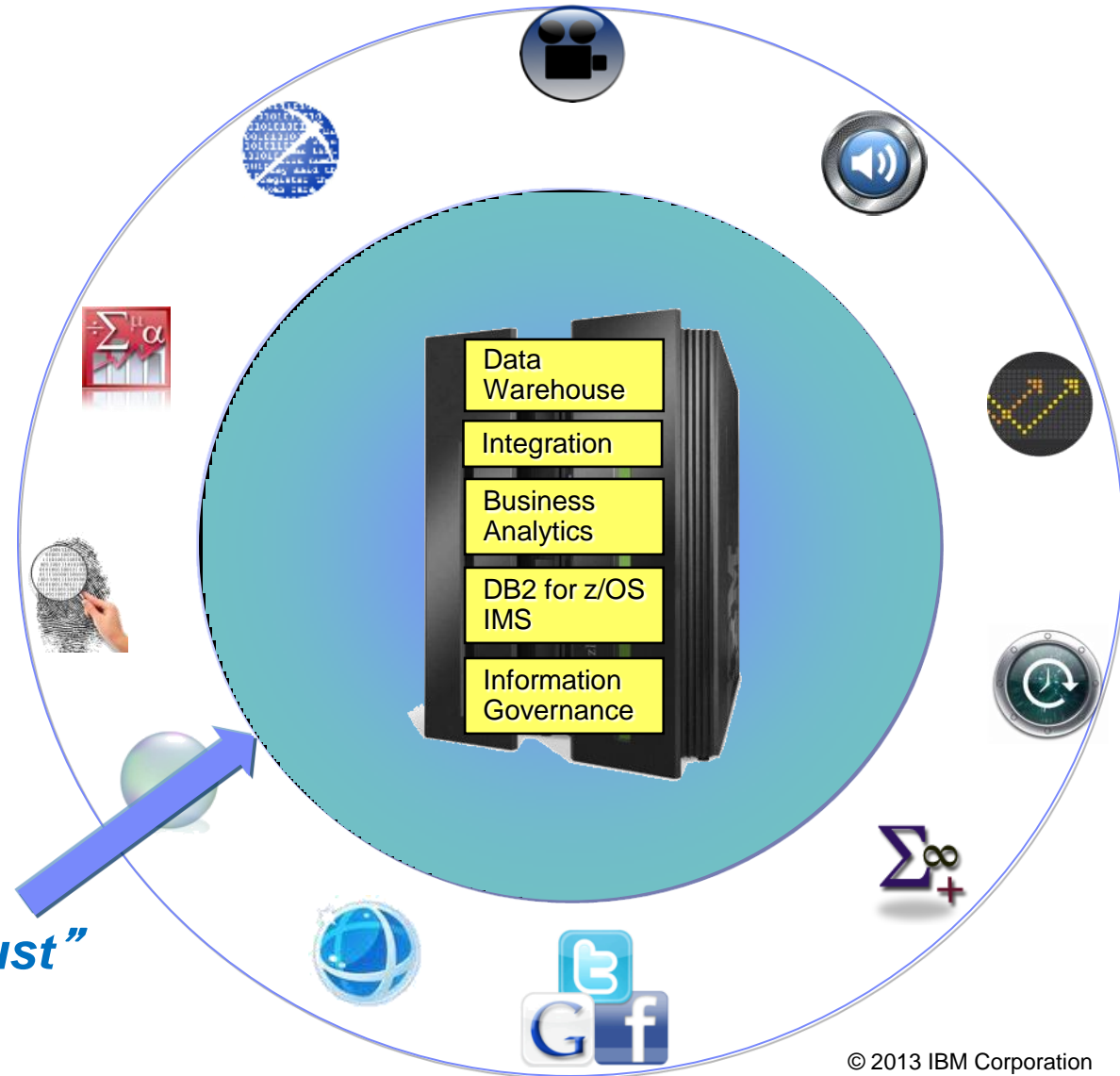
“We have for the first time an economy based on a key resource [Information] that is not only renewable, but self-generating.....  
....Running out of it is not a problem, *but drowning in it is.*”

– John Naisbitt



# Majority of today's analytics based on relational / structured data

- Analytics and decision engines reside where the DWH / transaction data is
- “Noise” (veracity) surrounds the core business data
  - Social Media, emails, docs, telemetry, voice, video, content
- What data are you prepared to **TRUST?**
- Where do you put your trusted Data?



“Circle of trust”







## zEnterprise and Big Data

### *A significant data source for today's business critical analytics*

- **Data that originates and/or resides on zEnterprise**
  - 2/3 of business transactions for U.S. retail banks
  - 80% of world's corporate data
- **Businesses that run on zEnterprise**
  - 66 of the top 66 worldwide banks
  - 24 of the top 25 U.S. retailers
  - 10 of the top 10 global life/health insurance providers
- **The downtime of an application running on zEnterprise = approx 5 minutes per yr**
- **1,300+ ISVs run zEnterprise today**
  - More than 275 of these selling over 800 applications on Linux



# Agenda

- Big data in the enterprise
- *An analyst's perspective*
- Making big data a reality - IBM System z Information Management solutions
- Summary and Call to Action
- Q&A

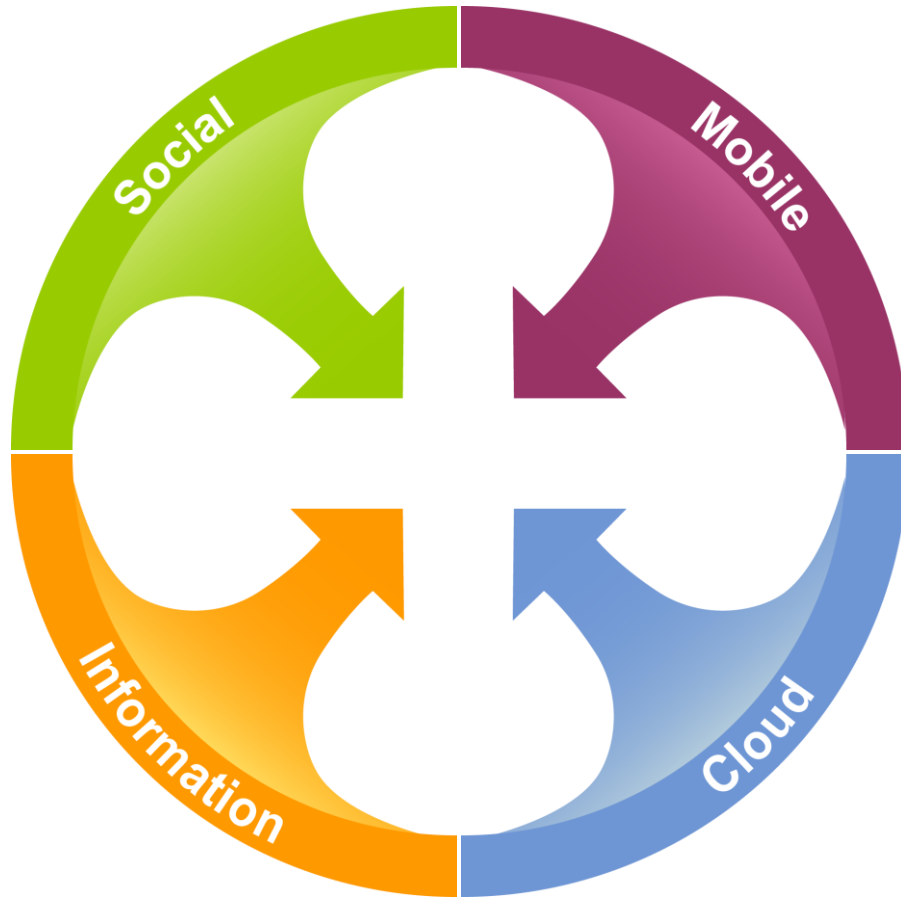




# Information 2020: Beyond Big Data

Donald Feinberg  
VP & Distinguished Analyst  
Gartner, Inc.

# The NEXUS ... Biggest Information Technology Inflection Point in 35 Years!



- What happened the last time?
  - From accounting and finance to operations management and market analysis
- What were the answers?
  - Client/server
  - Relational data
  - Operating systems
  - Server technology
  - Business Intelligence & DW
  - Not "unstructured" but different structure

**This time the challenges include the variety and velocity of data in social systems and mobility platforms. The answers are Information Management and Cloud.**

**Excitement**



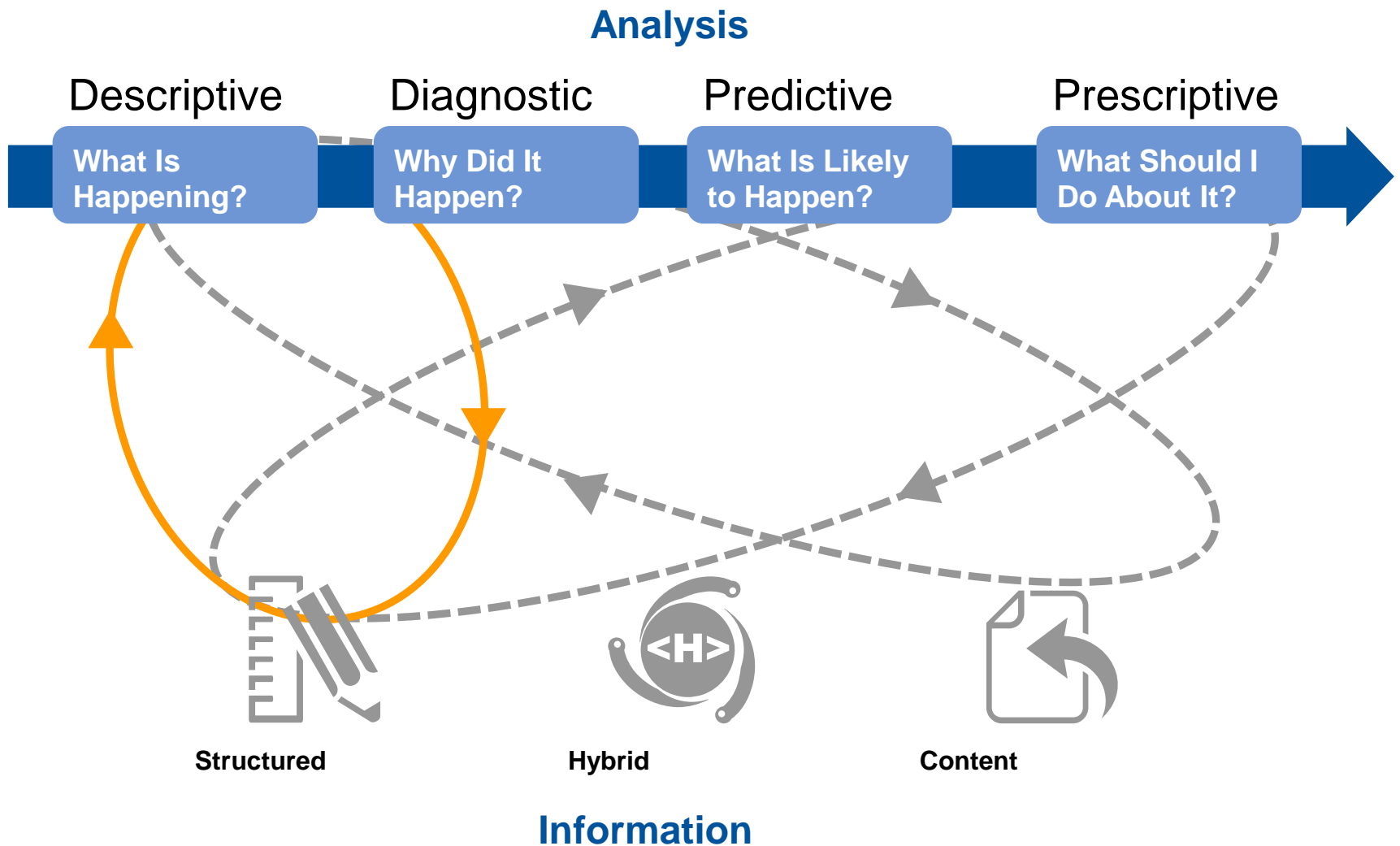
**Confrontation**



**Fear**



# Emerging Analytic Linkages



# The New World of Information: Fragmenting Technical Landscape

## STORE

File, in-memory,  
graph, column ...

← EDW/CMS

## MANAGE

Centralized → Federated

## SHARE/COLLAB.

Web → Any device

## ACCESS

OT, social, mobile,  
syndicated, open

← Bus app/OLTP

Structured → Content  
Hybrid

## ANALYZE

Fragmented/  
Focused

→ Asset leverage  
/Distributed

## GOVERN



# Information Driving Business Performance — Cause or Effect?

Through 2016, organizations integrating high-value, diverse, new information types and sources into a coherent information management infrastructure, will outperform their industry peers financially by more than 20%.

## Supporting the SPA:

- It is generally accepted that unstructured data comprises 60% to 80% of all information assets in an organization (e.g., documents, email and images).
- Adoption rates for text mining and analytics as well as e-discovery are rising. Anecdotally, 5% to 15% of analytics already utilize some form of sentiment or social analysis to augment structured data analytics.
- The total worldwide volume of data is growing at 59% per year, with the number of files growing at 88% per year.
- Organizations that focus on risk management, measure/monitor business performance metrics and use integrated information in their business insights ("Value Integrators," IBM) exhibit >30% ROIC, >49% CAGR and orders of magnitude superior EBITDA relative to their peers.\*

## Alternate position to the SPA:


- Innovative business processes and superior market awareness are the driving differentiators of leading companies, and integrated information assets are merely a byproduct of advanced leadership in other areas of organizations.
- Unstructured data yields a lower value-to-noise ratio than structured data.
- Effective analysis of information permits lagging organizations to close the gap toward leaders, but will continue to be overwhelmed by superior senior leadership skills.
- It is the analysis of information that leads to high levels of performance, and integration alone is ineffective.

\*Source: "The New Value Integrator," Insights from the Global Chief Financial Offers Study. IBM, 2010.

# Treat Information as an Asset

**Industrial Internet:**  
Pushing the Boundaries  
of Minds and Machines

Peter C. Evans and Marco Annunziata

 imagination at work

November 26, 2011


SINCE 1857  
**JOHN WEST**

RANGE RECIPES | TRAWLER FUN

DISCOVER THE STORY BEHIND YOUR CAN

ENTER YOUR CAN CODE

HM Government

 **DATA.GOV.UK** <sup>Beta</sup>  
Opening up Government

Home | Data | Participate | Data

SUGGEST A DATASET

SPEND REPORT TO THE DATA



# Traditional IM



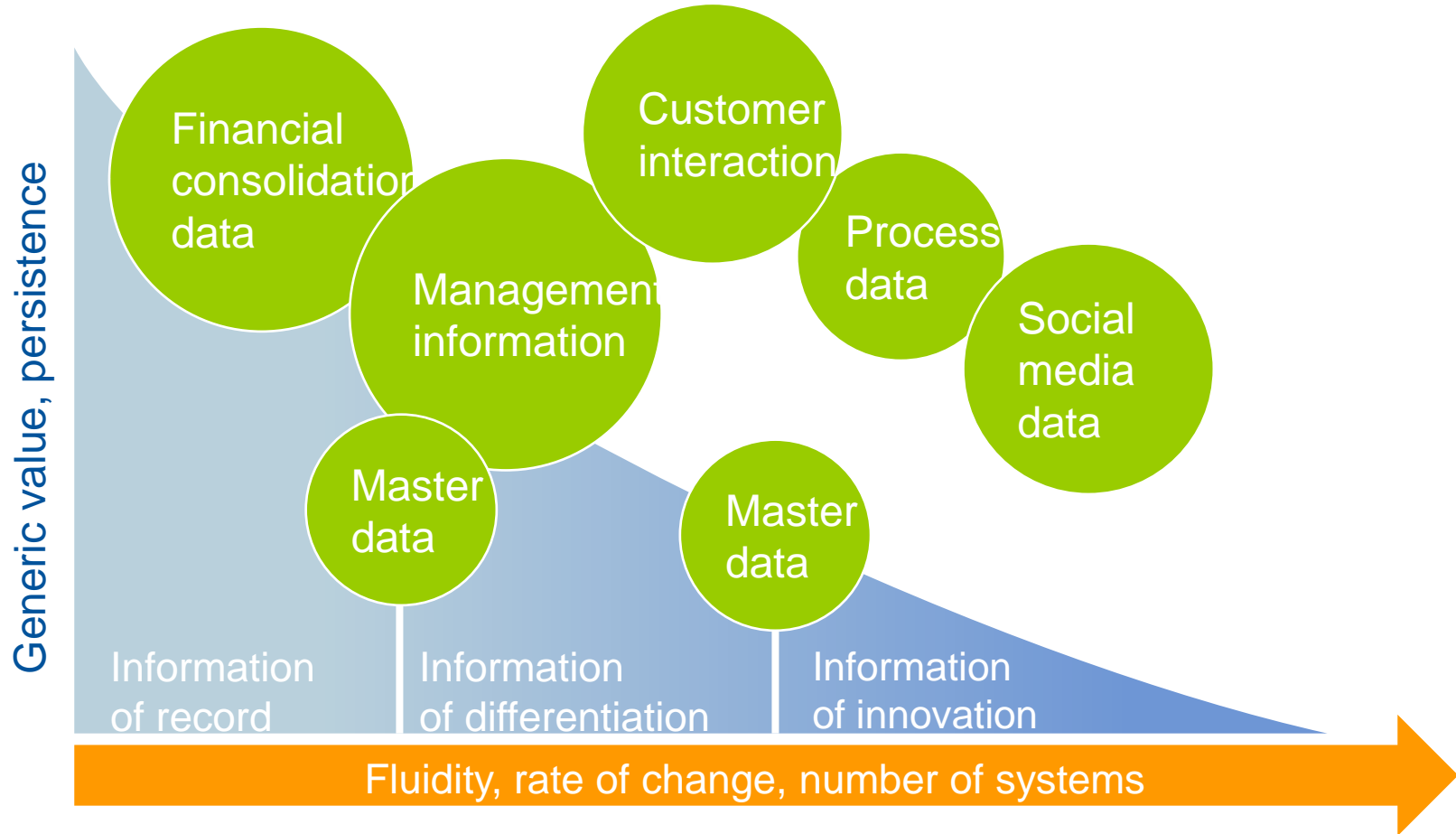
- Requirements based
- Top-down design
- Integration and reuse
- Technology consolidation
- World of DW and ECM
- Competence centers
- Better decisions
- Enterprise

# "Big Data" Style

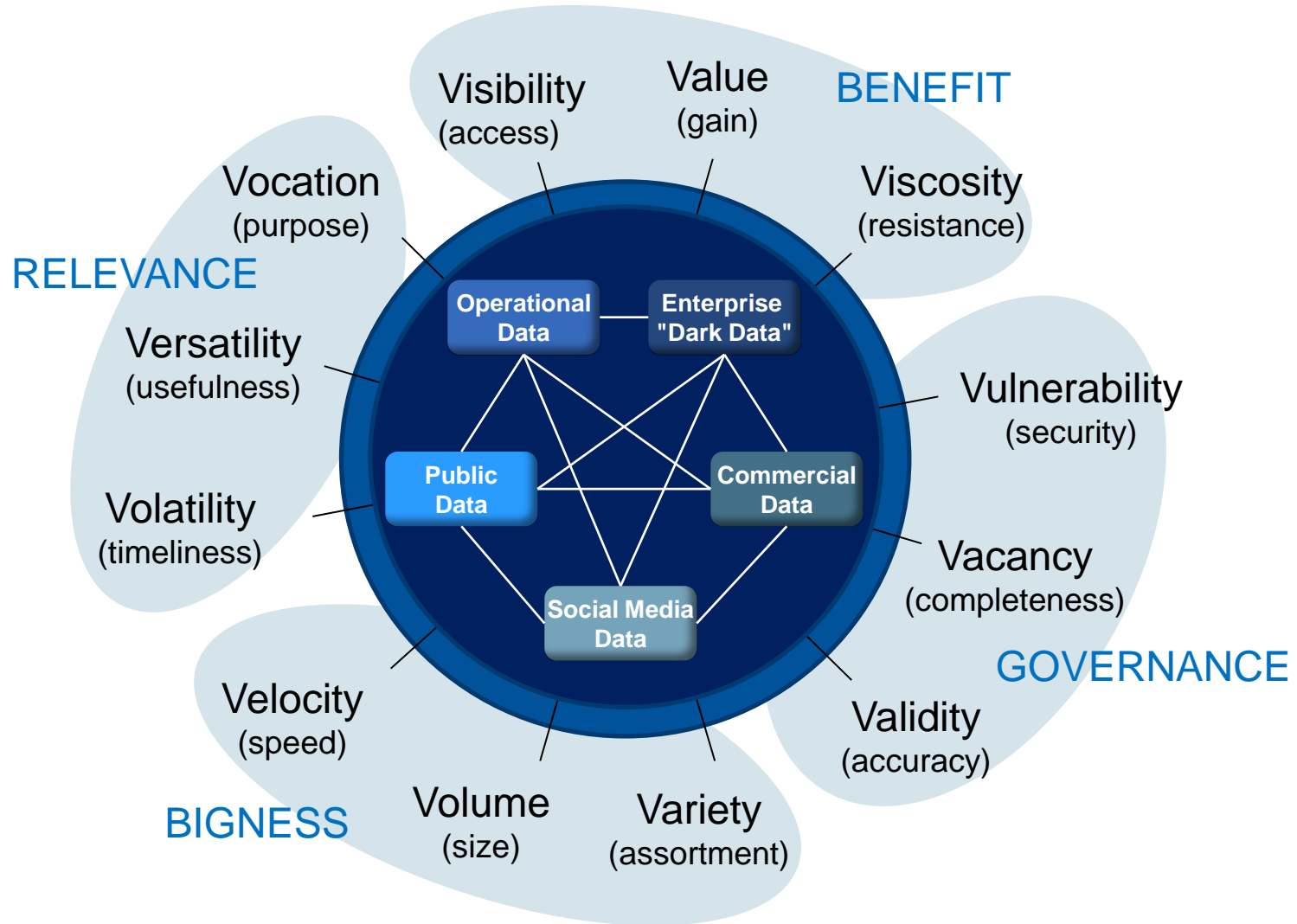


- Opportunity oriented
- Bottom-up experimentation
- Immediate use
- Tool proliferation
- "World of Hadoop"
- Hackathons
- Better business
- Marketing (+)

# Not All Information Requires a Big Data Approach



# Beyond Big Data and Beyond Gartner's Original "3Vs"



# Liberating Your Information With the Logical Data Warehouse



Structured



Content



Hybrid

Specialized Capabilities

Information Semantic Styles

Manage

Common Capabilities

Describe

Organize

Integrate

Share

Govern

Implement



Social



Documents



Transactional  
Data



IT/OT



Image



Audio



Text



Video



Mobile



Search  
Engine

Externalizing Capabilities Leads to Agnostic Information Infrastructure.

# Recommendations

---

- ✓ Prepare for the disruption that will be caused by the Nexus of Forces
- ✓ Research and begin pilot projects using the Logical Data Warehouse
- ✓ Do not jump into Big Data at the sacrifice of management of the other data in the organization
- ✓ Remember, there is more to Big Data beyond Volume, Velocity and Variety

# Information 2020: Beyond Big Data

Donald Feinberg  
VP & Distinguished Analyst  
Gartner, Inc.

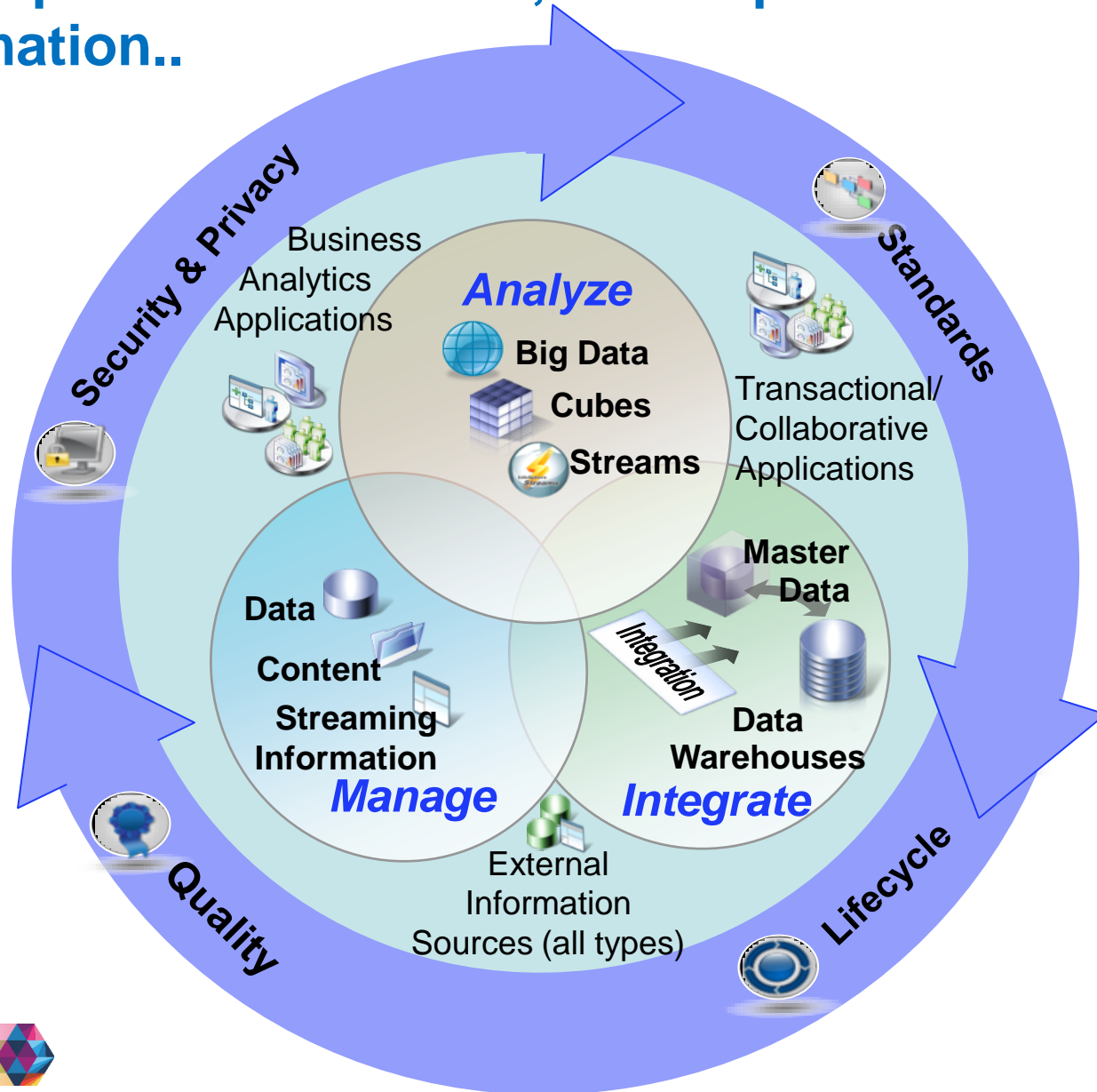
# Agenda

- Big data in the enterprise
- An analyst's perspective
- *Making big data a reality - IBM System z Information Management solutions*
- Summary and Call to Action
- Q&A



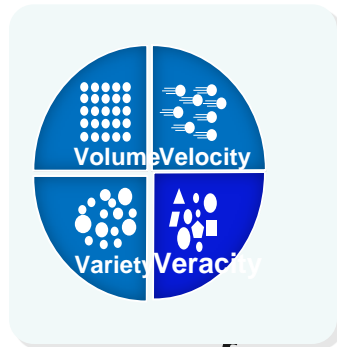


# The Enterprise : A federated, interdependent eco system of information..

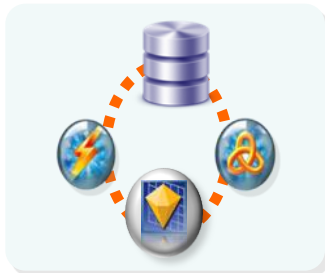


# Forward Thinking Organizations are creating value from Big Data

*The power of Data coming together...*



*...with the power of Technology...*



*...to deliver Improved Business Outcomes*



**1. Enrich your information base**  
*with Big Data Exploration*



**2. Improve customer interaction**  
*with Enhanced 360° View of the Customer*



**3. Optimize operations**  
*with Operations Analysis*



**4. Gain IT efficiency and scale**  
*with Data Warehouse Augmentation*



**5. Prevent crime**  
*with Security and Intelligence Extension*



# Implementing a Mission Critical Big Data Application



## Big Data Exploration

Find, visualize, understand all big data to improve decision making



GPS & sensor information volumes exceeded the capabilities of the existing system. It was redesigned as an enterprise mission critical application using DB2 for z/OS and System z data sharing to now provide the availability and scalability to meet the current and future requirements for this solution.




**JOHN DEERE**



# What sets zEnterprise apart for Big Data & Analytics Infrastructure



Timely, accurate and secure information	Superior availability, scalability and performance	Reduced costs and complexity	Rapid deployment and expansion
<ul style="list-style-type: none"><li>• <b>Co-location</b> of data warehousing, business analytics, transactional data</li><li>• <b>Reduced data movement</b></li><li>• <b>Lower latency</b> and near real time data</li><li>• <b>Rapid acceleration</b> of complex queries</li><li>• High <b>security</b> (EAL5+)</li></ul> 	<ul style="list-style-type: none"><li>• High <b>availability</b> (99.999% )</li><li>• Performs at <b>100% capacity</b></li><li>• <b>Prioritization</b> of critical queries &amp; workloads</li><li>• Integrated <b>disaster recovery</b></li></ul>	<ul style="list-style-type: none"><li>• <b>Processors, disk, memory added dynamically</b> without outage</li><li>• <b>Pre-install then activate</b> as needed</li><li>• <b>Flexible deployment options</b></li></ul>	<ul style="list-style-type: none"><li>• <b>Centralized, scalable</b> infrastructure</li><li>• <b>Virtualization</b></li><li>• Start with your <b>final architecture</b></li></ul>

# Data Warehouse – storing multi structured data for greater insight.



## Benefits

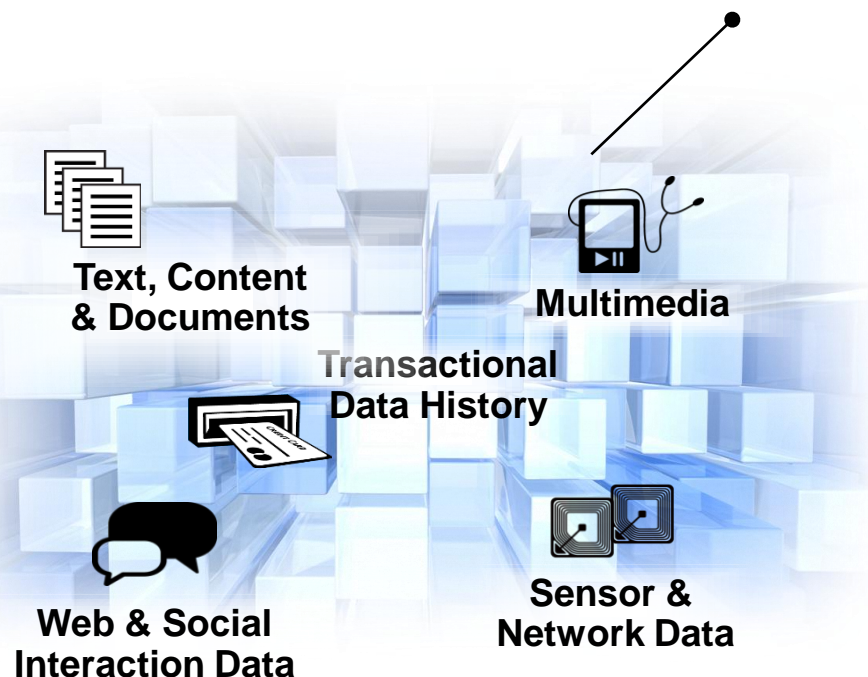
- Deliver new insights from multi-structured data such as sensor, social, and clickstream to make fact-based decisions
- Combine multi-structured data with historical data warehouse information to increase understanding
- Provide analytic information at the point of decision enabling fact-based decisions
- Pervasively enable decision makers and other end users across the organization
- Accelerate long running DB2 for z/OS queries from minutes to seconds for greater business value with Analytics Accelerator.





## ACCESS, COMBINE & MANAGE a relevant mix of information

### IBM Analytics on zEnterprise enables you to blend different sources and integrate them together



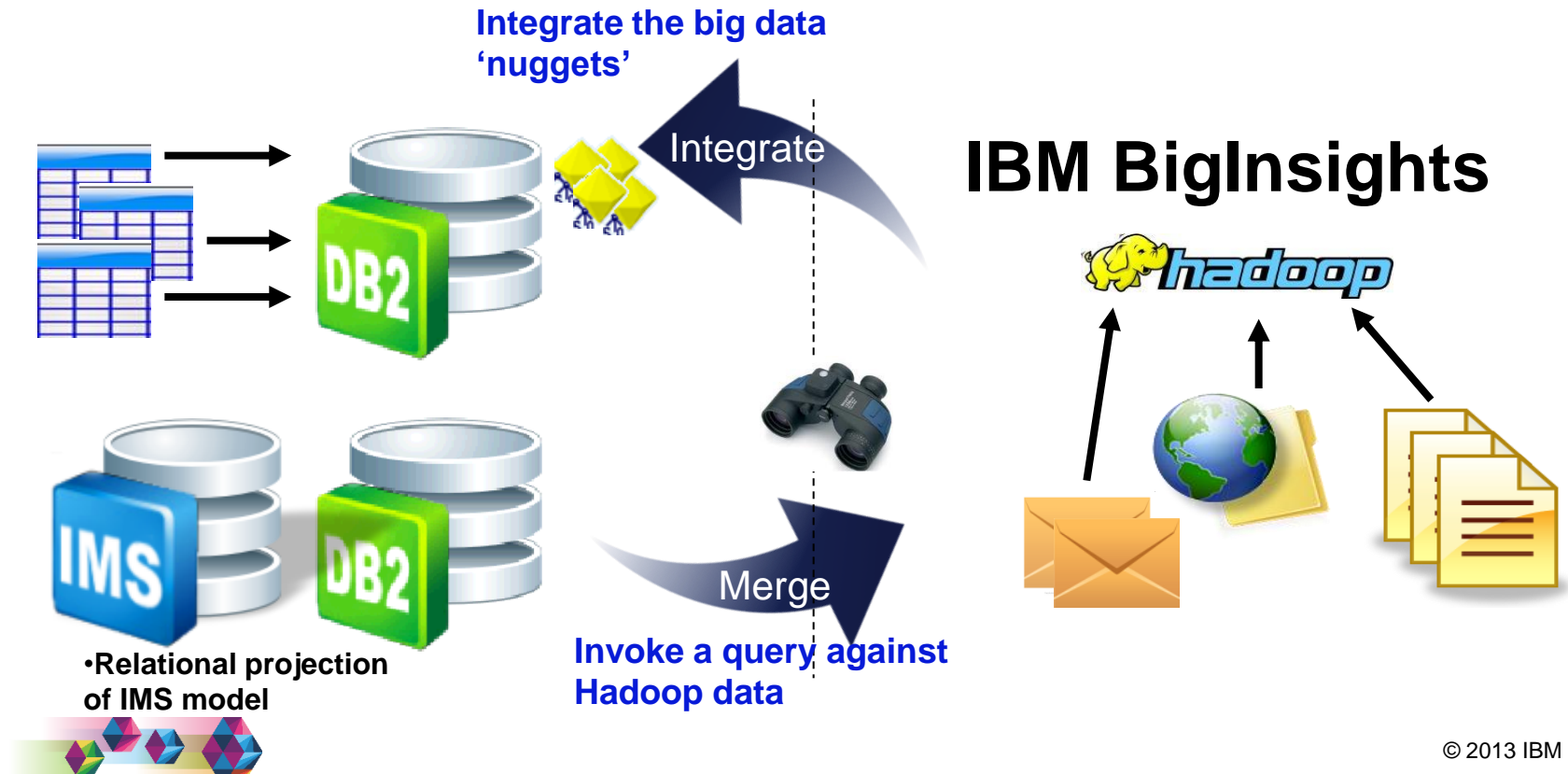
- Access big data sources with a single analytics solution
- Integrate big data results with structured enterprise data without the requirement to move source data off of zEnterprise for faster analysis
- Accelerate and cost effectively store large volumes of data, simply and cost competitively for more timely analysis
- Maintains the security and control of your most important corporate asset – your data



# Enhancing Big Data Analytics with IMS and DB2 for z/OS

- |  |  |
|--|--|
| <ul style="list-style-type: none"> <li>▪ Much of the world's operational data resides on z/OS</li> </ul> | <ul style="list-style-type: none"> <li>▪ Unstructured data sources are growing fast</li> </ul> |
|--|--|

1. Merge this data with trusted OLTP data from zEnterprise data sources
2. Integrate this data so that insights from Big Data sources can drive business actions
  - IMS & DB2 - connectors & DB capability to allow BigInsights to easily & efficiently access each data source
  - DB2 - connectors & DB capability to allow DB2 apps to easily and efficiently access Hadoop data sources





## DB2 11 Major Themes

### *Building on the Success of DB2 10*

- Performance Improvements
  - Improving efficiency, reducing costs, no application change
  - 0-5% for OLTP, 5-15% for update intensive batch
  - 5-20% for query workloads
  - Exploitation of new zEC12 hardware features
- Continuous Availability Features
  - Improved autonomies which reduces costs and improves availability
  - Making online changes without affecting applications
  - Online REORG improvements, less disruption
- Enhanced business analytics
  - Faster, more efficient performance for query workloads
  - SQL improvements and IDAA enhancements
  - Temporal and SQLPL enhancements
  - Transparent archiving
- Simpler, faster DB2 version upgrades
  - No application changes required for DB2 upgrade
  - Access path stability improvements
  - Product stability: support pre GA customer production



## DB2 11 Support for Big Data

- Goal: integrate DB2 for z/OS with IBM Hadoop based BigInsights Bigdata platform
  - Enabling traditional applications on DB2 z/OS to access Big Data analytics.
- Analytic jobs can be specified using JSON Query Language (Jaql)
  - Submitted to BigInsights
  - Results stored in Hadoop Distributed File System (HDFS).
- A table UDF (HDFS\_READ) reads the Bigdata analytic result from HDFS, for subsequent use in an SQL query.
- Must have a variable shape of HDFS\_READ output table
  - DB2 11 supports generic table UDF, enabling this function



## TECHNOLOGY

# Deliver dramatically faster analysis

## IBM DB2 Analytics Accelerator

**A high performance appliance that integrates Netezza technology with zEnterprise technology, to deliver dramatically faster business analysis**

- Speeds up complex queries up to 2000x
- Lowers the cost of long term storage
- Minimizes data latency
- Improves security and reduces risk
- Complements existing investments



# Big Data & Analytics on IBM zEnterprise

Bringing it all together > Driving greater insight





## Operations Analysis

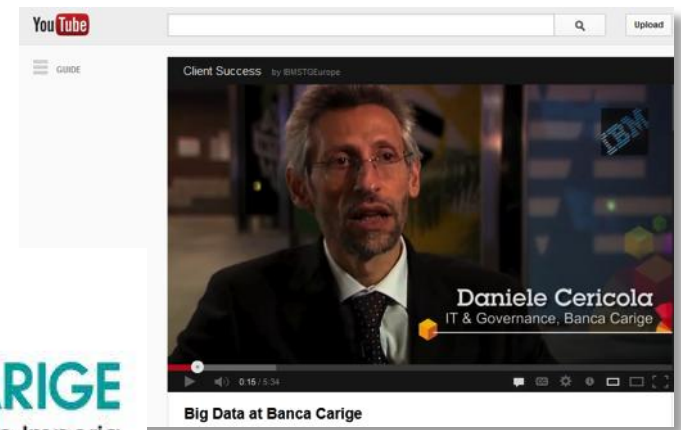
Analyze a variety of machine data for improved business results

# Big Data Innovation with IBM zEnterprise



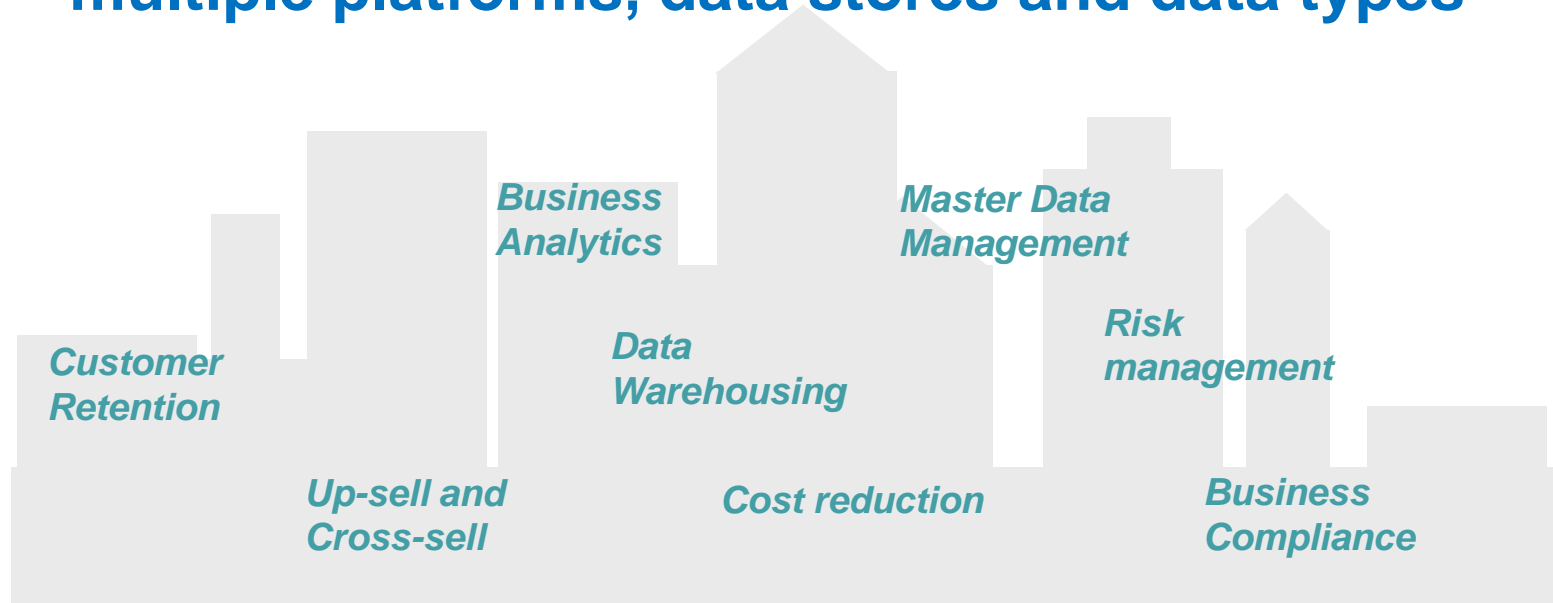
Banco do Brasil purchases the **largest ever** DB2 Analytics Accelerator solution to drive customer insight from operational data. The 120-way system can hold 1.28 Petabytes of data. Queries that previously took **11 hours to run now complete in 26 seconds**, over 1500 times faster!

Banca Carige chooses System z to provide real time analytics as part of their Big Data client solution





# Enterprise wide information Governance solutions multiple platforms, data stores and data types



Information Governance underpins and is foundational to your Information Management projects



# Agenda

- Big data in the enterprise
- An analyst's perspective
- Making big data a reality - IBM System z Information Management solutions
- *Summary and Call to Action*
- Q&A





## IBM understands your big data requirements



### IBM understands all kinds of data

- **Game-Changing Innovation** – such as Watson, IBM DB2 Accelerator for z/OS, streaming analytics, Hadoop implementations, expert integrated systems; 20 years of patent leadership, best of breed databases / data warehouses – *DB2 for z/OS, IMS....*
- **Business-Ready Capabilities** – big data and analytics capabilities, integrated and hardened for serious use, with mission and business critical qualities of service unmatched in the industry



### IBM knows how to turn data into value

- **Client Expertise** – deep industry know-how and solutions with global reach
- **Strong Ecosystem** – growing investment with 360+ business partners & 100+ universities
- **Build on Current Investments** – enhance existing analytics and information infrastructure with unparalleled breadth and depth of new capabilities



### IBM continued investments in big data and analytics processing

- **\$16B+ in Acquisitions** – coupled with game-changing innovations
- **IBM zEnterprise** - The platform with the highest levels of integrity, qualities of service and governance for your business critical applications and processes.
- **Analytics Solution Centers** – visited by 4000+ organizations accessing global expertise



## Take Action Now!

### Next steps:

- For additional information including whitepapers and demos, please visit:
  - [IBM big data for z web site](#)
  - [Analytics on zEnterprise](#)
  - [Information Governane](#)
- Education
  - Free online education at [bigdatauniversity.com](http://bigdatauniversity.com)
  - 70,000+ registered students
- Community
  - Join Big data and World of DB2 for z/OS on LinkedIn
- Further developments:
  - Watch for future webcast and announcements
- Wanting to experiment on a big data integration project but not sure where to start?  
*Partner with IBM Silicon Valley and other laboratories nearest you..*

English

login sign up

HOME LEARN DOWNLOAD RESOURCES JOBS LEARN Hadoop

search courses

What is Hadoop?

**Hadoop Fundamentals**

Start your career on Hadoop with this **FREE** course

Learn with hands-on exercises on a Hadoop cluster

Enroll now!

**Why register?**

- **Easy and Affordable**  
Learning Hadoop and other Big Data technologies has never been more affordable! Many courses are FREE!
- **Latest industry trends**  
Acquire valuable skills and get updated about industry's latest trends right here. Today!
- **Learn from the Experts!**  
Big Data University offers education about Hadoop and other technologies by the industry's best!
- **Learn at your Own Pace!**  
Find everything right here when you need it and from wherever you are.

sign me up

View sample completion document!

**Study Made Easy!**

sign up now for a chance to receive: **FREE Books**

SIGN UP

**Student Testimonials** ▶ go to sign up

**Balázs (USA)**  
The training material has short, easy to digest videos, with separately available transcripts allowing to execute the same commands after watching the videos. Each command line in the transcript can be cut and pasted making the examples easy to reproduce. There is very good support for Windows users both on 32bit and 64bit. Everything works right out of the box as described in the course materials. Online support on the Course Forums is excellent, most questions were answered before even I encountered the issue. The curriculum associates the chapters from the "Getting Started with

about us | legal | contact | bug reports



## Q&A

Donald Feinberg, Vice President and Distinguished Analyst, Gartner Inc.

Mark Simmonds, IBM Enterprise Architect and Senior Product Marketing Manager, IBM Software Group



# Program Note

This webcast is sponsored by IBM. Any editorial supplied by IBM is independent of Gartner analysis. All Gartner research is © 2013 by Gartner, Inc. and/or its Affiliates. All rights reserved.

All Gartner materials are used by IBM with Gartner's permission and in no way does the use or publication of Gartner research indicate Gartner's endorsement of IBM products and/or strategies. Any other reproduction of this webcast in any form without prior written permission is forbidden. The information contained herein has been obtained from sources believed to be reliable.

Gartner disclaims all warranties as to the accuracy, completeness or adequacy of such information. Gartner shall have no liability for errors, omissions or inadequacies in the information contained herein or for interpretations thereof. The opinions expressed herein are subject to change without notice.



**Thank You**

To learn more, please visit:

[www.ibm.com](http://www.ibm.com)

