



# High-Performance Agility for Business Growth

*Connecting Business Processes and Optimizing Your Application Infrastructure*

Richard Baird

Vice President, WebSphere Foundation Development

21 August 2012



# Agenda

How to leverage IBM's Business Process Management and Operational Decision Management solutions for greater agility on the zEnterprise platform.

- Why process & decision optimization?
- Improving operational decisions through modernization
- Improving business processes, operations and outcomes
- How the pieces fit together

## Effective and Efficient Processes Deliver *Significant Results...*

Banco Estado *speeds up loan origination time by 93%*, increasing the average throughput of loans processed by *over 400%* return on investment



IMMIGRATION & CHECKPOINTS AUTHORITY

Immigration & Checkpoint Authority *improves response to security threats* by *96%* using Operational Decision Management

Major Financial Services Firm *increases revenue* by *\$4M* by improving time to market by *93%*



... *but* Process Defects can Topple Major Global Companies

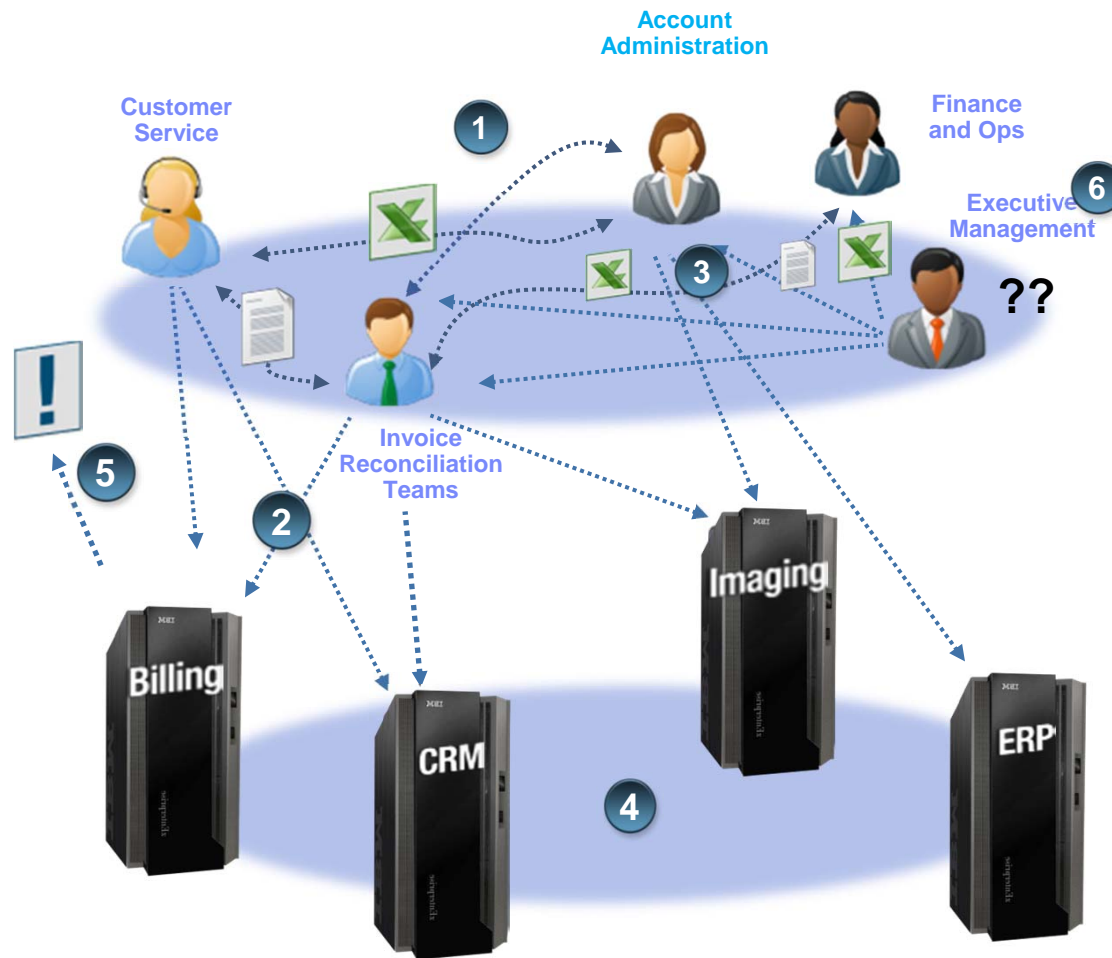
“Between *now and year-end 2014*, overlooked but easily detectable business process defects will *topple 10* Global 2000 companies”

~ Gartner



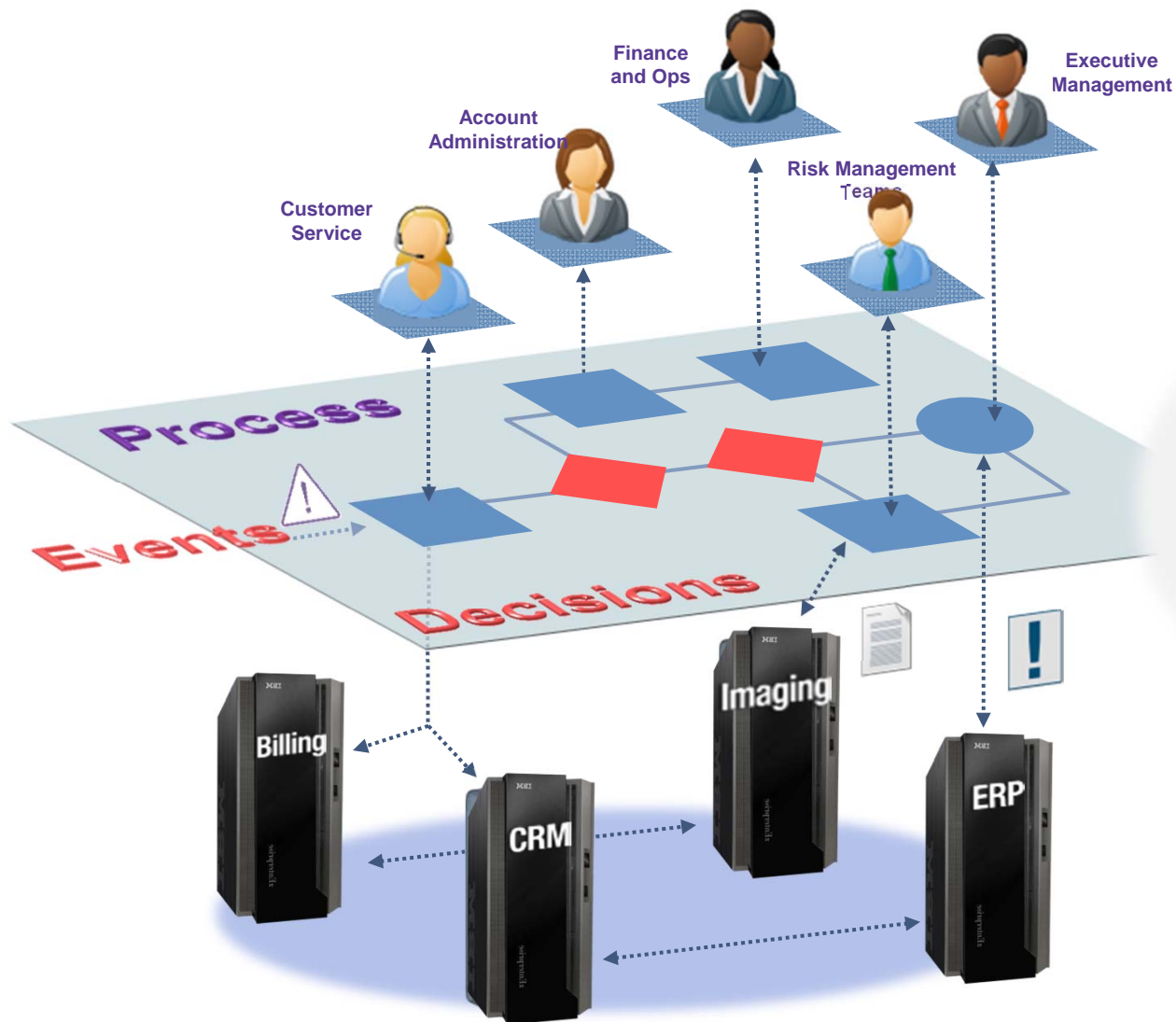
<http://www.gartner.com/it/page.jsp?id=1530114>

# Business Chaos Begs for Operational Improvement



- 1 Unstructured tasks and communication (ex. paper or email)
- 2 Inefficient working environment spans systems
- 3 Inconsistent prioritization
- 4 Incomplete or inaccurate data flow between systems
- 5 Lack of control over system and business events (Exceptions)
- 6 Poor visibility into process performance

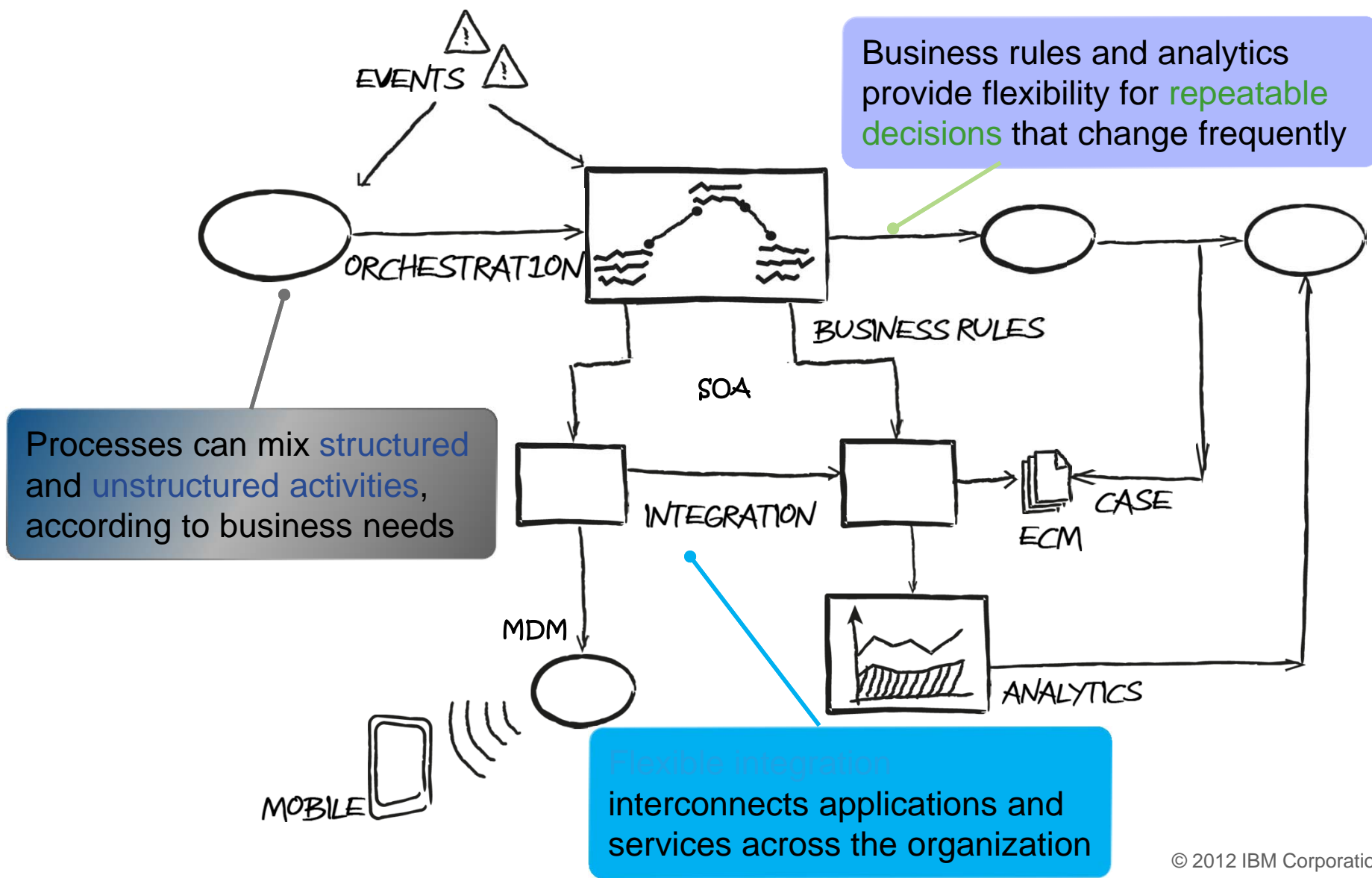
# Process & Decision Management bring order to chaos



**What to do.  
How to do it.  
When to do it.**

# Building Blocks to Achieve Process Innovation

*Empowering business and IT users to easily manage change*



# The Consumerization of Change

**Enabling regular business  
people to easily and safely make changes  
to their business operations**





# Visibility, Collaboration & Governance to Effectively Manage Change

## VISIBILITY

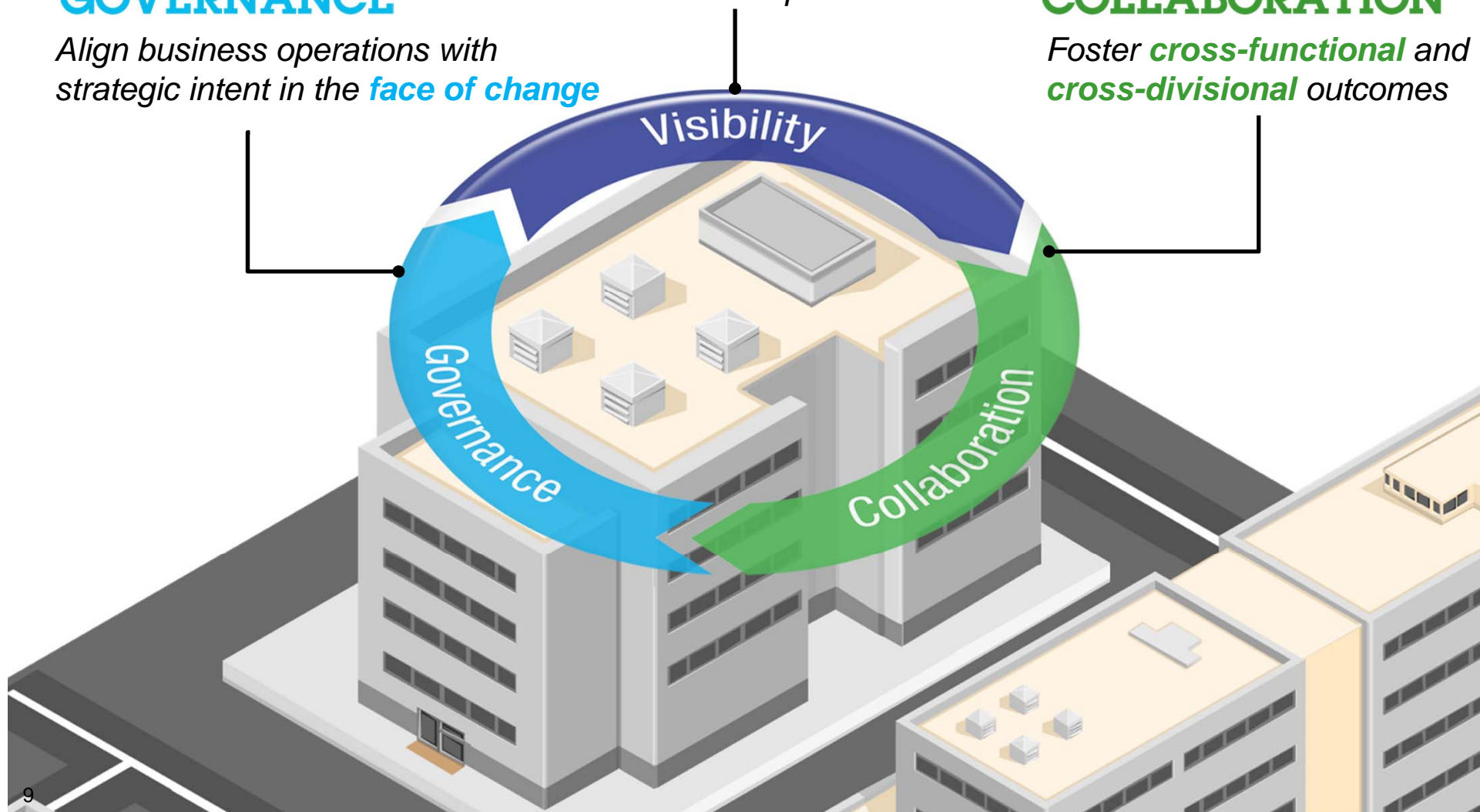
Achieve *clearer line-of-sight* to business operations

## GOVERNANCE

Align business operations with strategic intent in the *face of change*

## COLLABORATION

Foster *cross-functional* and *cross-divisional* outcomes



# The value of the System z environment is also realized by BPM and Operational Decision Management deployments

## Process Integrity

Reliable execution of distributed business activity

## Transactional Strength

Robust applications demonstrate resilience and scalability in the face of workload challenges

## Co-location

Mission-critical applications and processes co-located for performance

## Scalability

To billions of transactions per day with high utilization rates



## Dependability

Through a robust and resilient infrastructure

## Interconnected

Throughout enterprise with high speed cross-memory communications

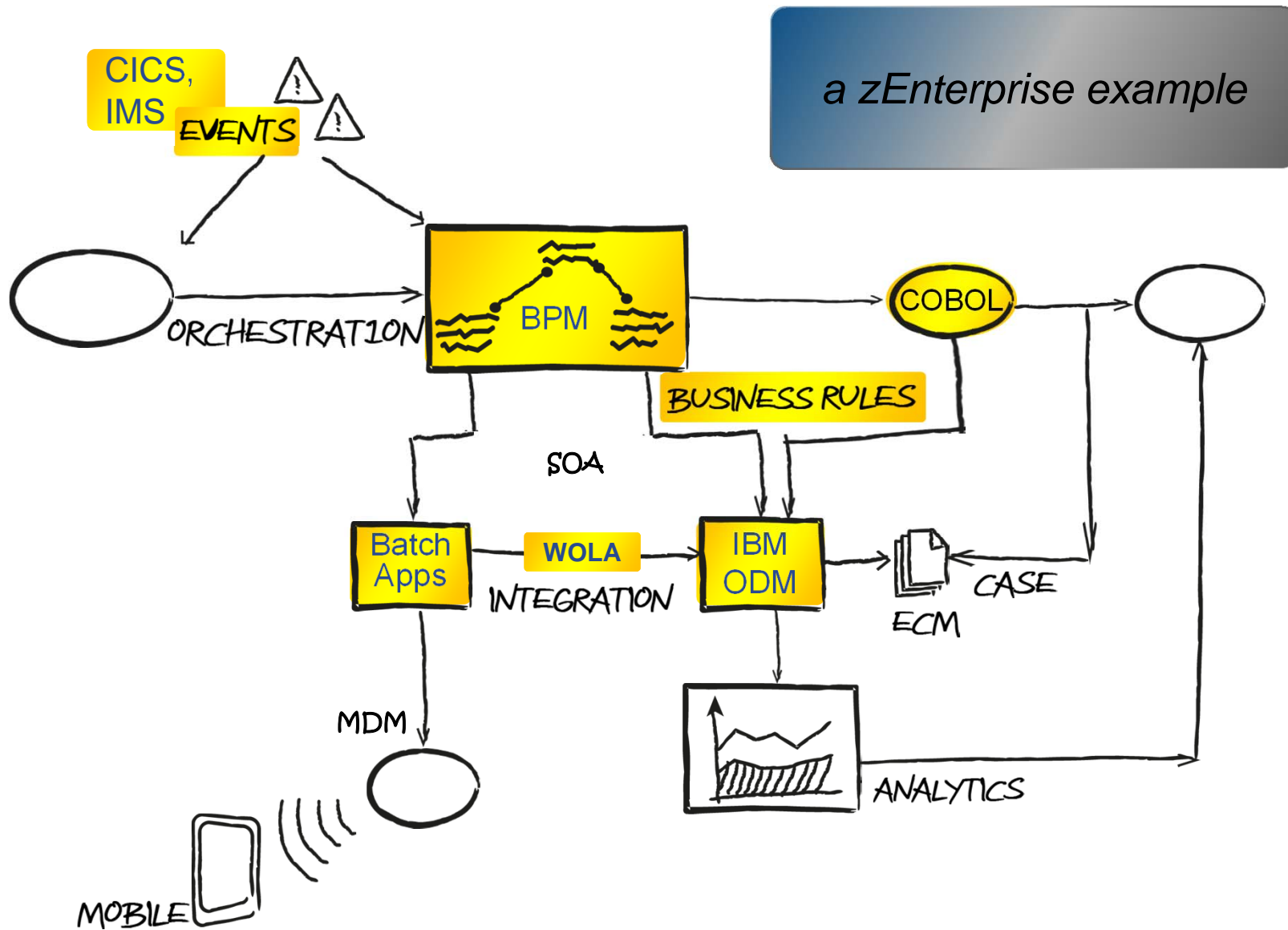
## Dynamic Infrastructure

IT must adapt to changing infrastructure cost pressures, contention for limited resources, and changing business priorities

## High Availability

99.999%

# Building Blocks to Achieve Process Innovation



*a zEnterprise example*

# Agenda

How to leverage IBM's Business Process Management and Operational Decision Management solutions for greater agility on the zEnterprise platform.

- Why process & decision optimization?
- **Improving operational decisions through modernization**
- Improving business processes, operations and outcomes
- How the pieces fit together

## What is an operational decision?

### Business Rules

Primarily implements a decision model – given a snapshot view of data, determines best course of action at a specific point in a process or application

Main purpose is to automate a decision based on a combination of factors (business policies, regs, best practices)

If the **Passenger** is a **gold frequent traveler** and **flight distance** is more than 4000 miles and the **flight destination** is in Europe or Asia Then Add 10,000 points to the fidelity card of the **Passenger**

### Business Events

Primarily implements a time-based pattern detection model – correlating events as data is in motion

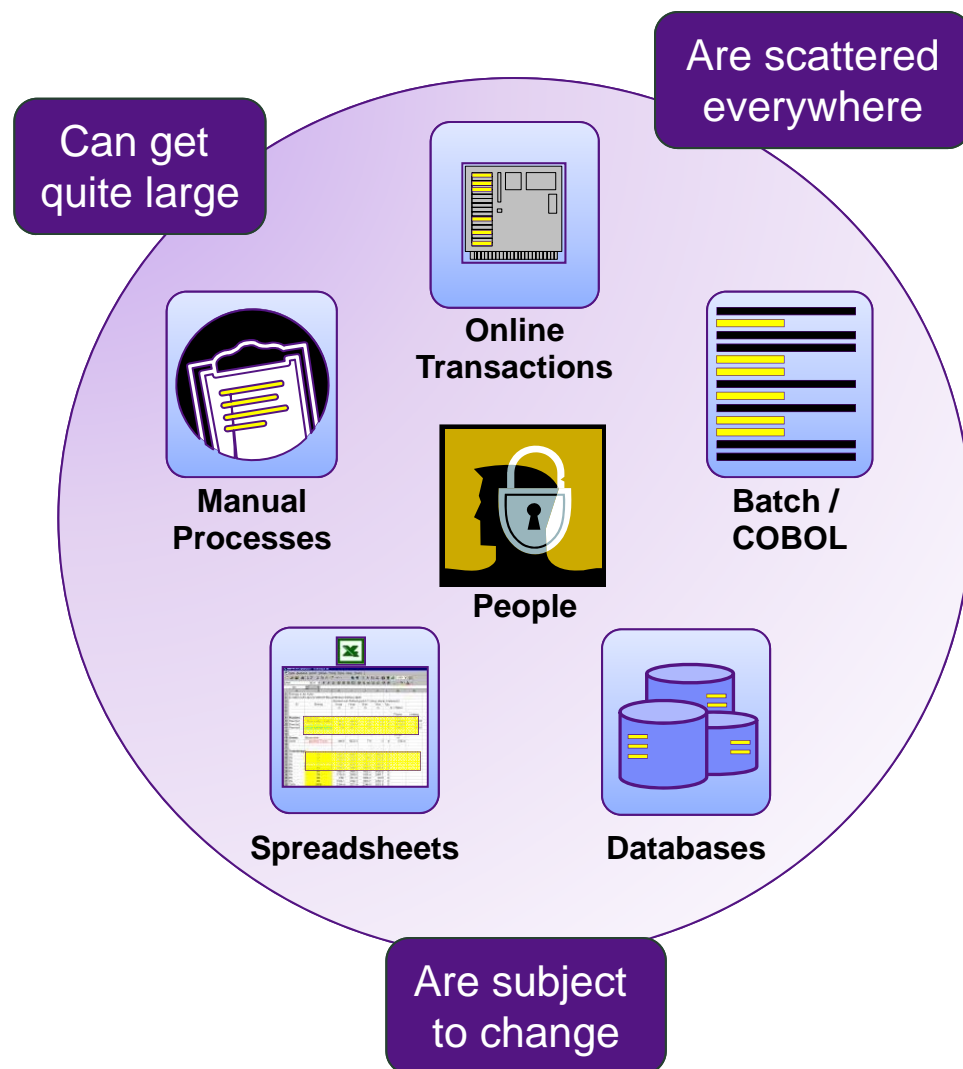
Main purpose is to determine what of interest is transpiring and coordinate one or more responses by other systems or generate alerts to people

If more than 2 **customer withdraws in an ATM** are done **in the same day** and the 2 ATMs are from 2 foreign countries Then **Investigate possible fraud** and **Reduce cash redraw max amount to 100\$**



**Gartner** characterizes Rules and Complex Event systems as complementary notions. The combination being required to implement intelligent decision management programs.

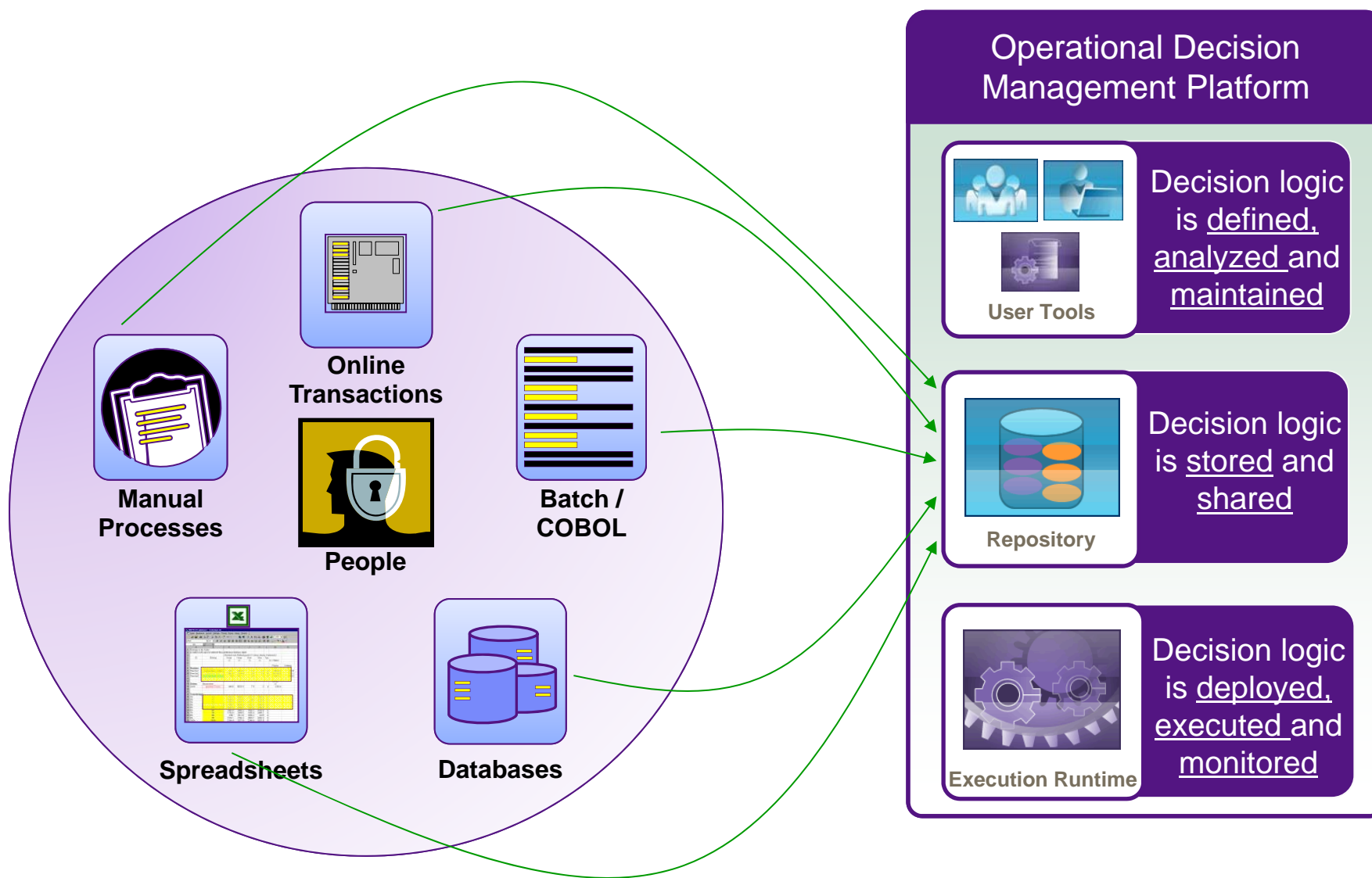
# Decisions and Business Rules on System z platforms



## Challenges for a Change Request

- Changes are costly, resource & time-intensive
  - Rules are hidden in COBOL code
  - Most changes have to be programmed – costly
- Lack of consistency
  - No central management
  - No reuse of decision logic
- Gap between business analysts & IT administrators
  - Knowledge fades over time
- Lack of audit ability
- No easy way to test/simulate changes

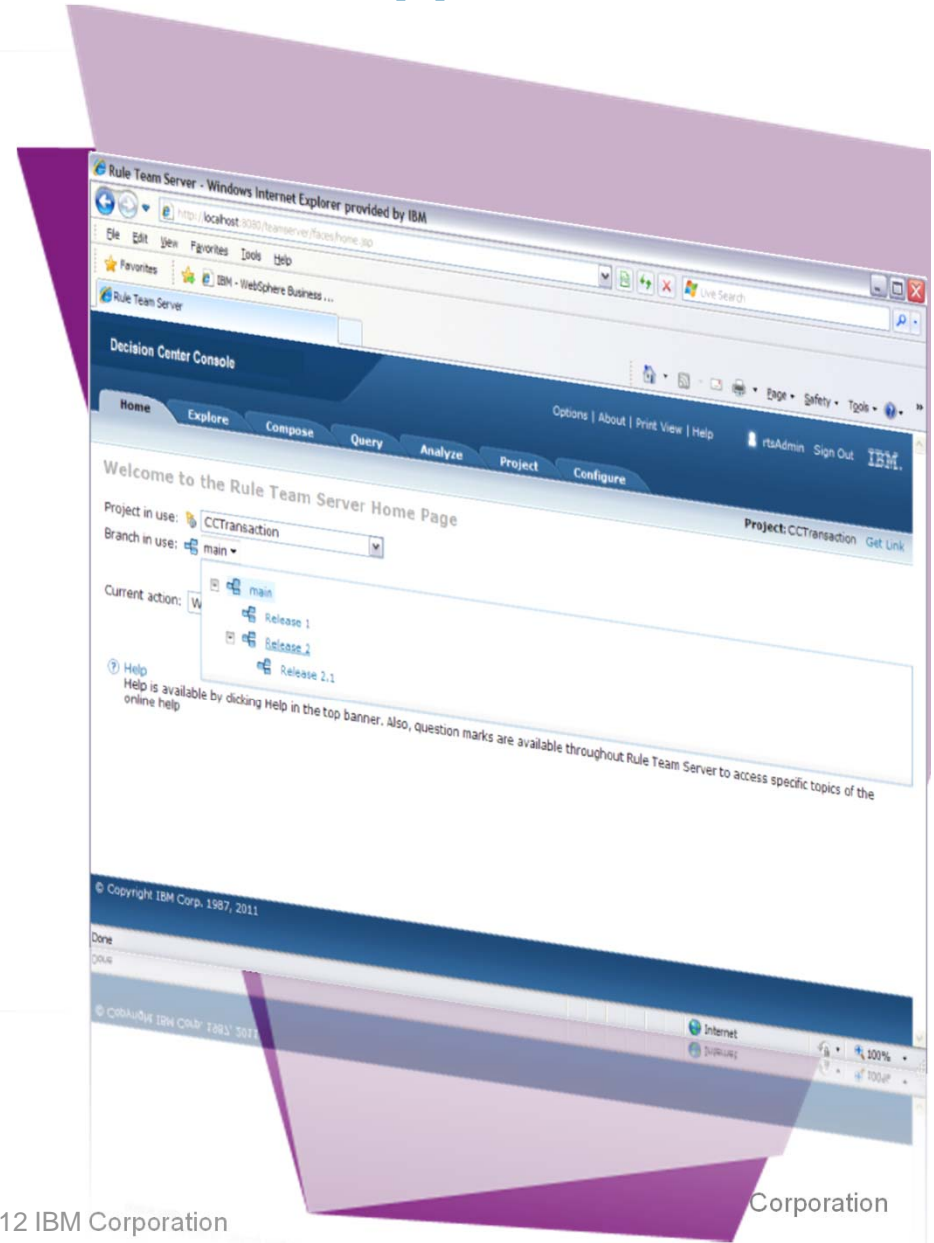
# Operational Decision Management approach



# Transformation and modernization of z/OS applications

*With IBM Operational Decision Management, incremental rule modernization becomes possible*

- *Gradually pull out rules from existing applications – does not require a “big bang” change*
- *Rewrite business rules in natural language so Business Users can participate in definition, change, and/or verification of rules*
- *Recognize an immediate return on investment*
- *Employ Rational Asset Analyzer rule mining functionality to identify potential rules embedded in your code*





## IBM Operational Decision Management v8 for z/OS

# Next Generation Business Rules

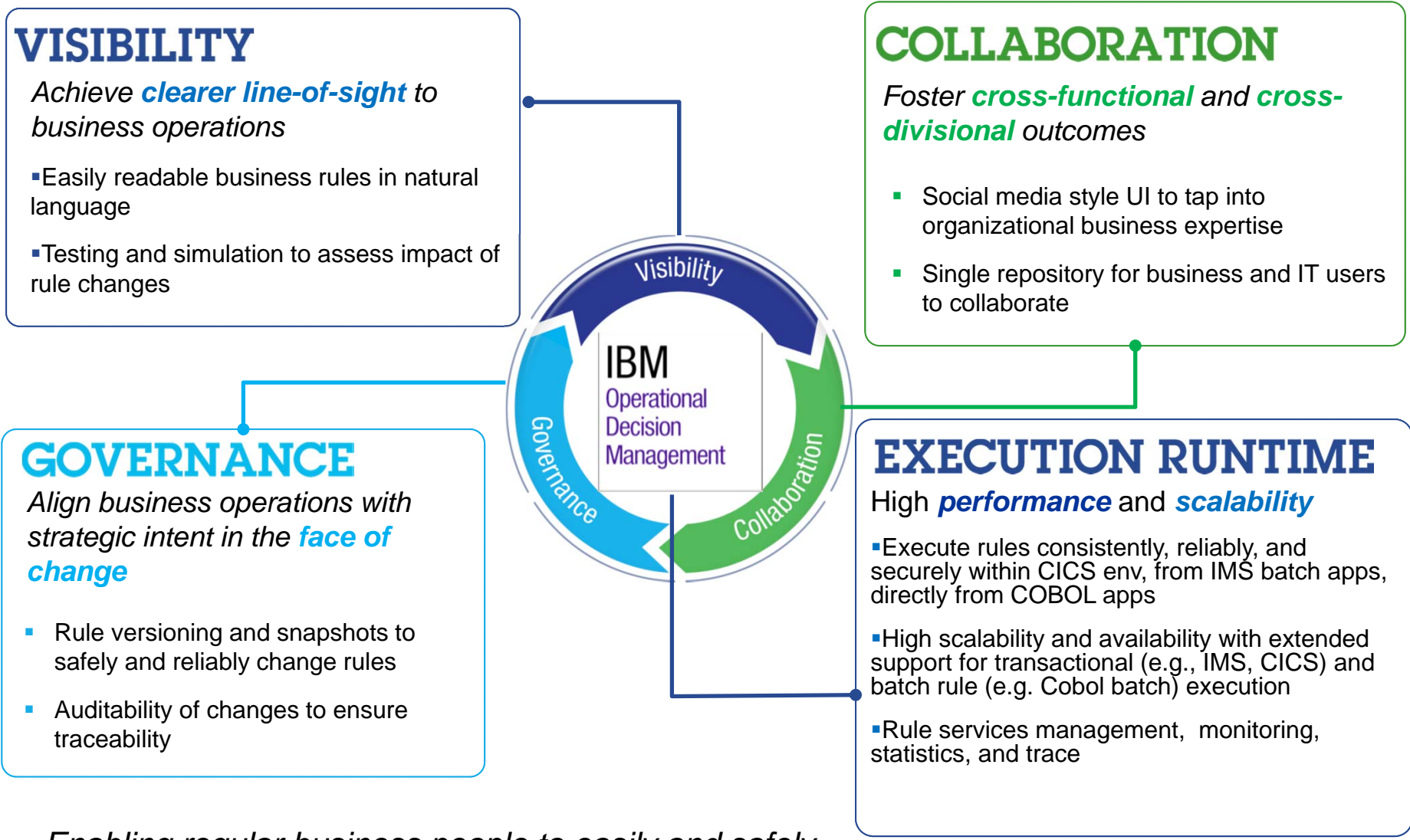
- Manage business policies at scale
- Operationalize enterprise intelligence
- Enable social collaboration to manage business change

### Apply Operational Decision Management...

- To flexibly and reliably manage repeatable, automated decisions
- When decisions change frequently
- To increase straight-through-processing
- When decision services must be shared across systems
- To manage and govern large numbers of rules
- When real-time events require immediate actions

# Visibility, Governance, Collaboration in Operational Decision Manager

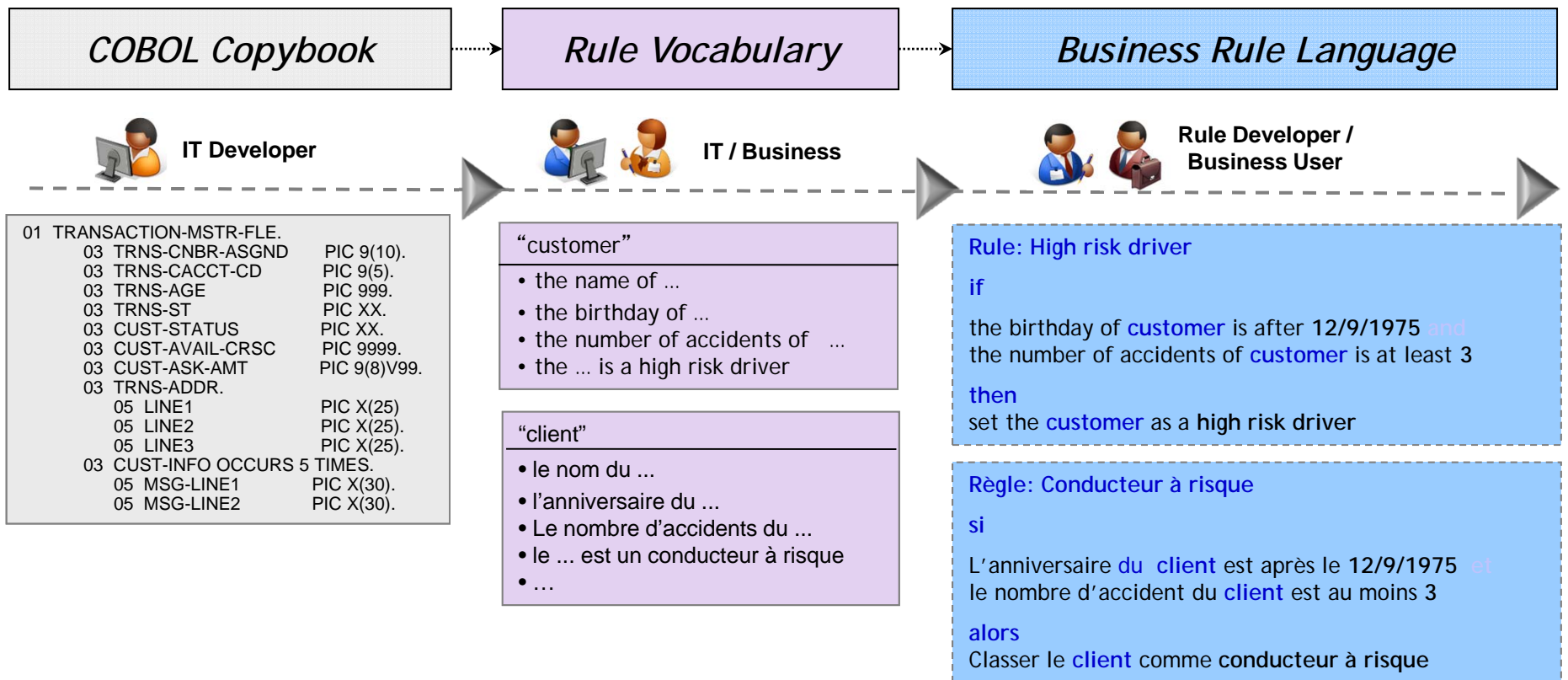
*Business Policies Built for Change vs. Built to Last*



*Enabling regular business people to easily and safely make changes to their business operations*

# Business decisions stated in business language

*Customizable vocabulary*

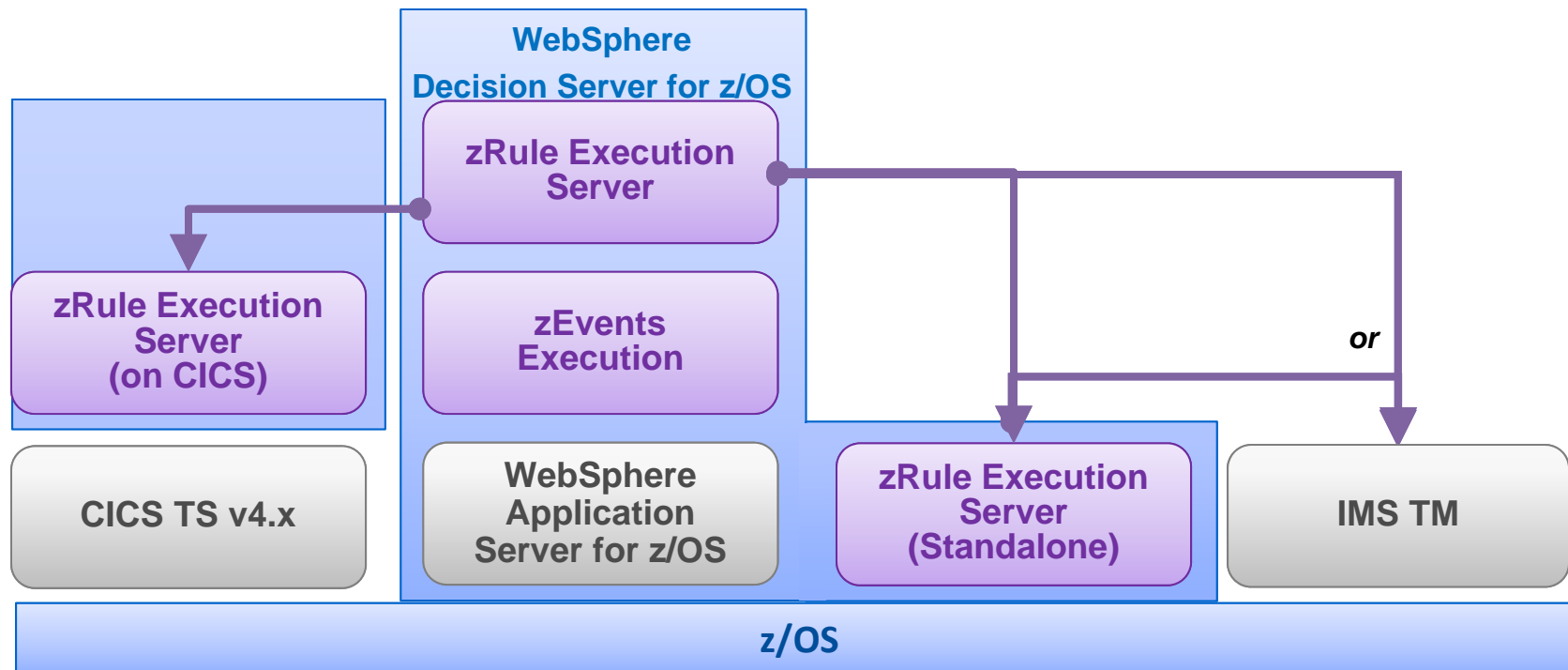


*Empower business experts to manage and validate decision logic, eliminating delays in business*

# Operational Decision Management for z/OS

## Runtime options

- Decisions can be invoked from existing IMS, CICS and Batch TSO applications
- Runtime support for COBOL data types
- Flexible runtime deployment to fit any System z environment:
  - Deployed standalone to z/OS (for batch applications including IMS)
  - Deployed on WebSphere Application Server for z/OS (for CICS, IMS and batch)
  - Deployed in CICS TS 4.x JVMServer environment (for CICS applications)



## IBM Operational Decision Management

*Faster decisions on more transactions*

### Major Financial Institution

- Improved client acceptance of offers from 3% to 20-30%
- Increased revenue \$14M in bookings in 2.5 months

### Accovia Inc.

- Travel & Transportation booking engine
- Business rules deployed to production within hours rather than weeks, increasing competitive and pricing agility

### Immigration & Checkpoints Authority

- Each year more than 140 million people evaluated in under 30 seconds
- Modification of risk assessment criteria time reduced by more than 96%

**Execute mission critical  
decision-making at the  
speed of business**

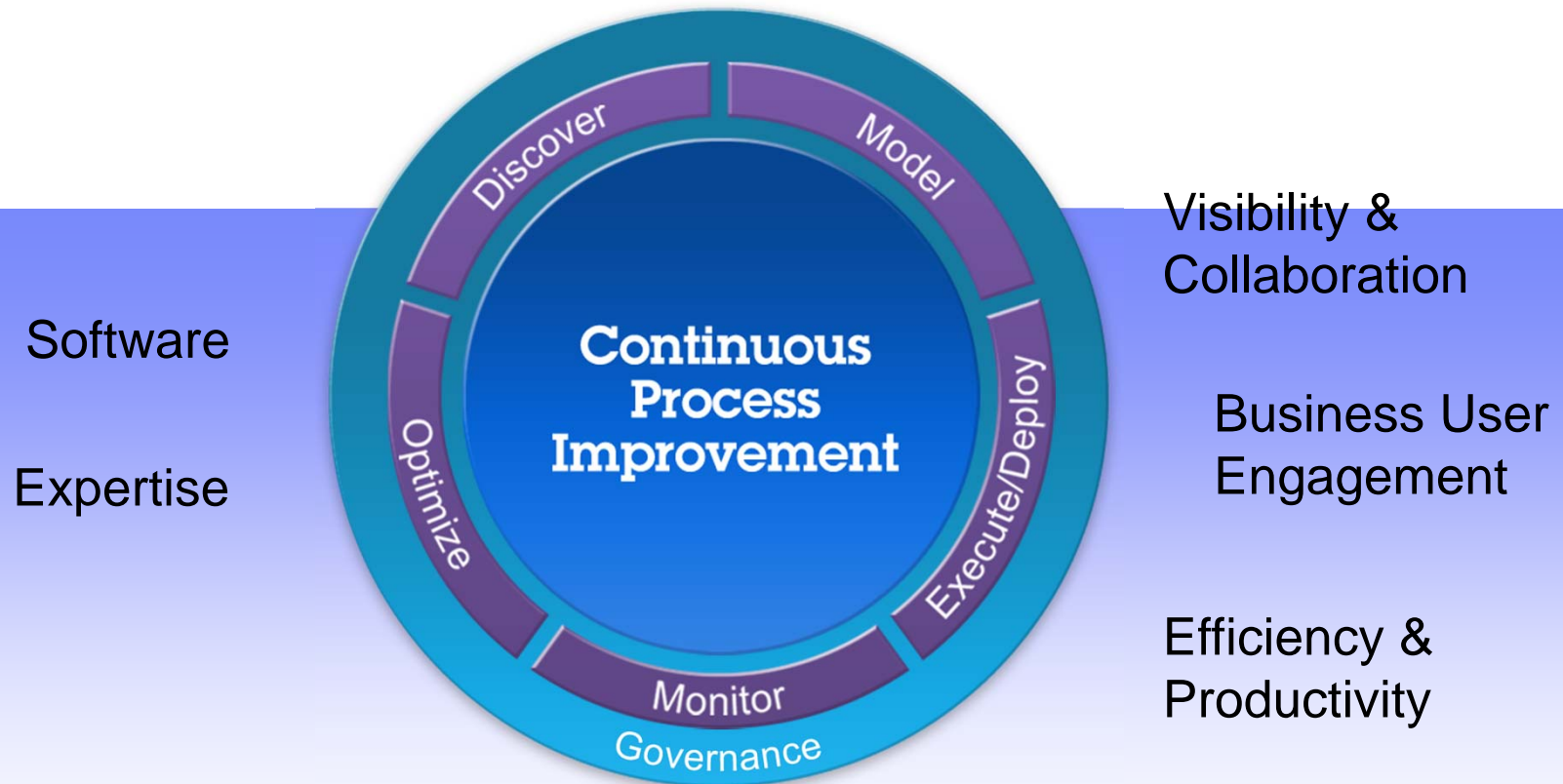
# Agenda

How to leverage IBM's Business Process Management and Operational Decision Management solutions for greater agility on the zEnterprise platform.

- Why process & decision optimization?
- Improving operational decisions through modernization
- **Improving business processes, operations and outcomes**
- How the pieces fit together

## What is *Business Process Management*?

Through robust and flexible software capabilities and industry expertise, BPM enables customers to discover, model, execute, rapidly change, govern, and gain end-to-end visibility on their business processes



**Achieve better business outcomes with IBM BPM**

# Visibility, Collaboration and Governance for BPM

## VISIBILITY

Providing Complete visibility into business operations

- Intelligent Process Monitoring and Analytics provide insights into work in progress
- Heat Map Overlays detects bottlenecks and performance thresholds and displays them visually
- Real-time scoreboards to quickly see what corrective actions are needed

## COLLABORATION

Work isn't done in silos. Collaborate for better business outcomes.

- Easily access and connect with participants and experts
- Dynamic activity notifications facilitate real-time collaboration and responsiveness
- Collaborate directly on work with participants and experts for simpler task completion

## GOVERNANCE

Managing change confidently

- Centralized process deployment visibility and control *across all environments*
- Install and track deployed versions of *multiple processes* across *various* runtime server environments

## EXECUTION RUNTIME

- Execute processes *consistently, reliably, securely*, and with *transactional integrity on IMS, CICS, Batch, COBOL*
- High *scalability and availability* with extended support for *high-volume* process automation and *high quality-of-service best realized on System z*





## IBM Business Process Manager v8 for z/OS

### *Dramatically Improve the Way Work Gets Done*

- Manage mission-critical business processes at scale
- Ensure transactional integrity
- Enable social collaboration to manage business change

#### Maximize Agility in zEnterprise Business Applications...

- ***Resiliency*** through workload management & co-location
- ***Simplicity*** of process complexity through high-performance process automation
- ***Modernization*** of existing applications with shared and reusable enterprise process services

# Get real-time visibility with built-in performance data

## Performance Data Warehouse



- Empowers business users to optimize business processes with ***process monitoring and analytics***

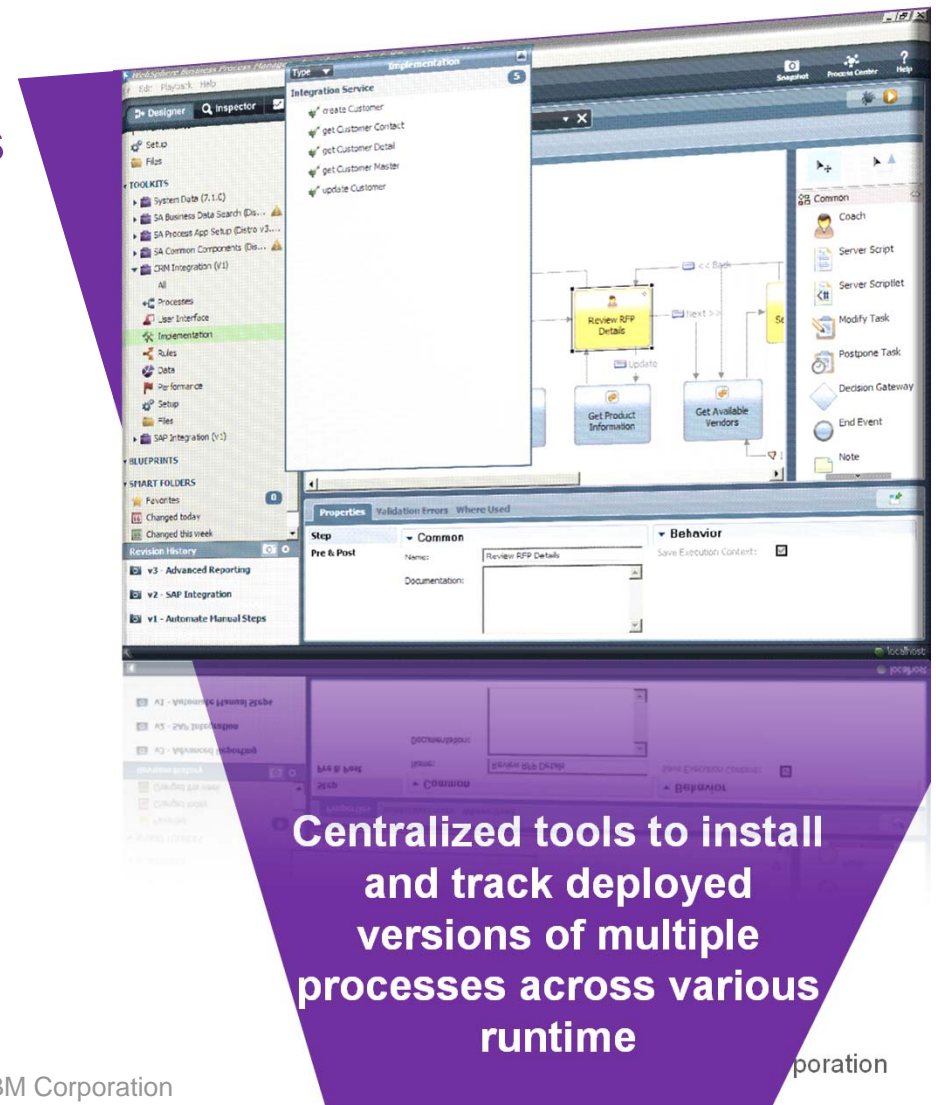
- ***Automatically gathers*** and ***correlates*** performance events and business data

- ***Real-time scoreboards*** provide visibility into work-in-progress and the ability to take corrective action when necessary

## Easily manage multiple process versions

*Toolkits, Snapshots, Back-in-time versioning*

- Toolkits manage independent versions of process artifact libraries, **reused across multiple process applications running on System z or distributed**
  - Snapshots capture the state of all process artifacts at a specific point to **reduce version management complexity** with a single click
- Back-in-time versioning **restores any historical snapshot** of a process with just one click



# Collaboration Breeds Better Results

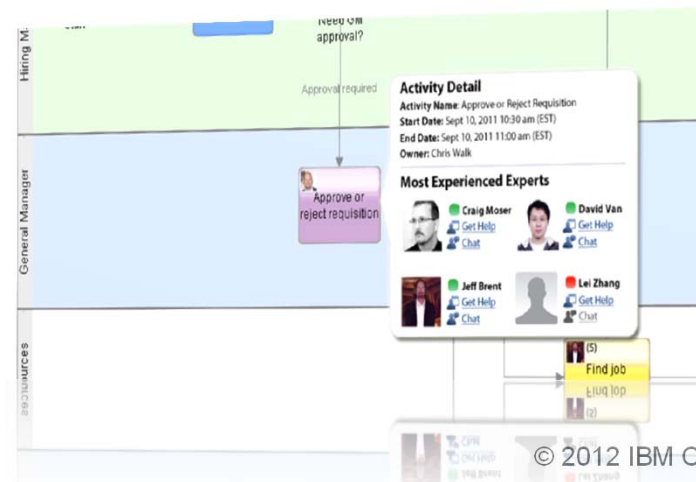
*Easily access and connect with participants and experts*

Connect to other Experts and Participants to get help with this task – via:

## Coach Toolbar

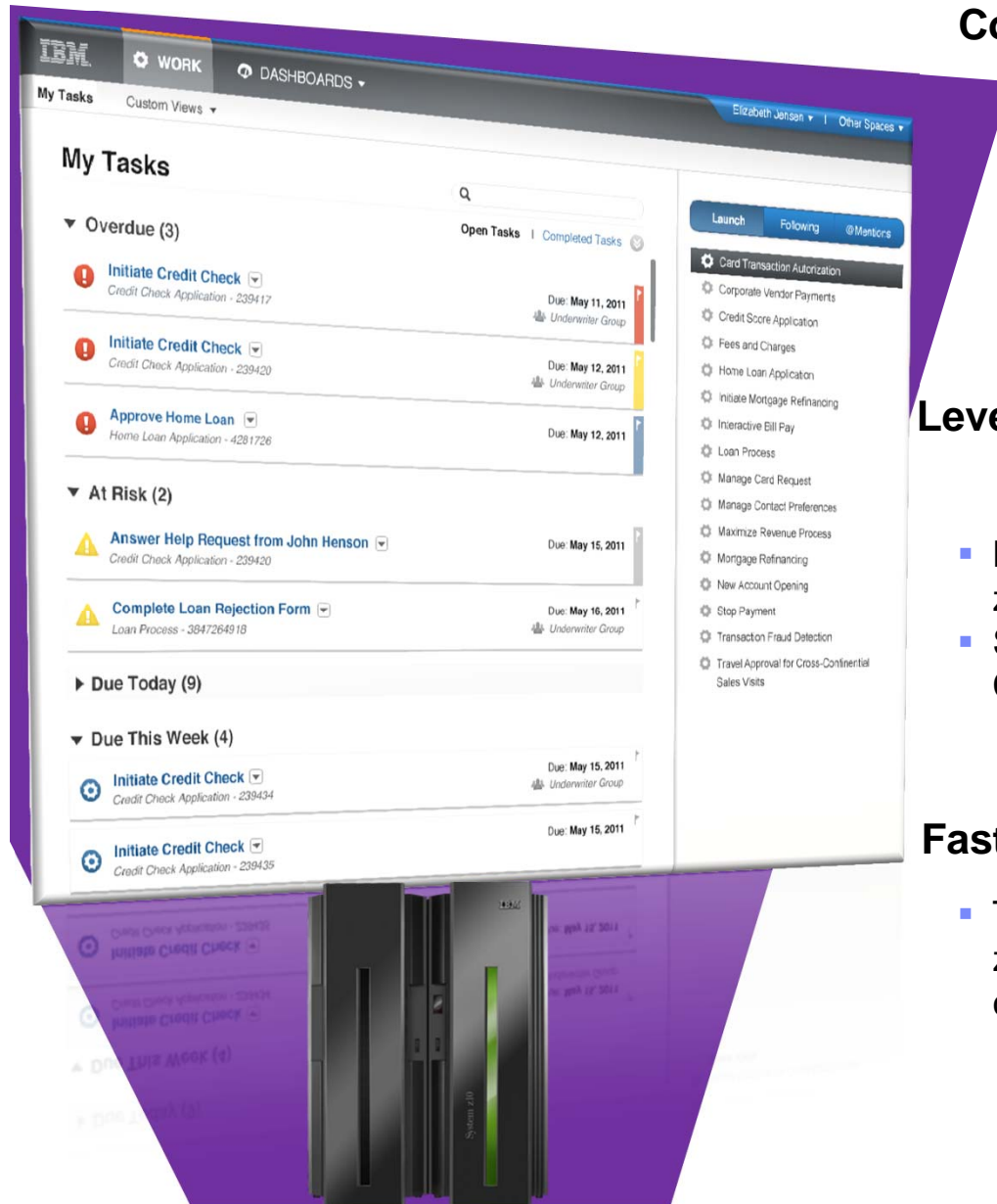
or

## Process Diagram



**Interact with other Participants via Stream of comments and attachments for process instance**

# Why IBM BPM on System z?



## Connect to CICS and IMS z/OS services

- Designers interact with applications on z/OS using familiar COBOL data structures
- Leverage native z/OS data structures

## Leverage co-location on z/OS of processes that interact with CICS, IMS, or DB2

- Long-running work workflow processes with DB2 z/OS
- Straight-thru (integration-centric) processes with CICS, IMS, DB2

## Fast communication with z applications

- Tight integration with CICS, IMS, SAP – leveraging z/OS resource recovery services and two-phase commit for transaction coordination on z/OS

# IBM Business Process Manager for z/OS

*Faster Change, Safer Transactions*

## Citigroup

- zEnterprise allows multi-tier application integration
- Unmatched scalability and 85-100% utilization

## Informatika, d.d.

- Consolidate and standardize hundreds of processes as part of ongoing effort to improve efficiency and compliance

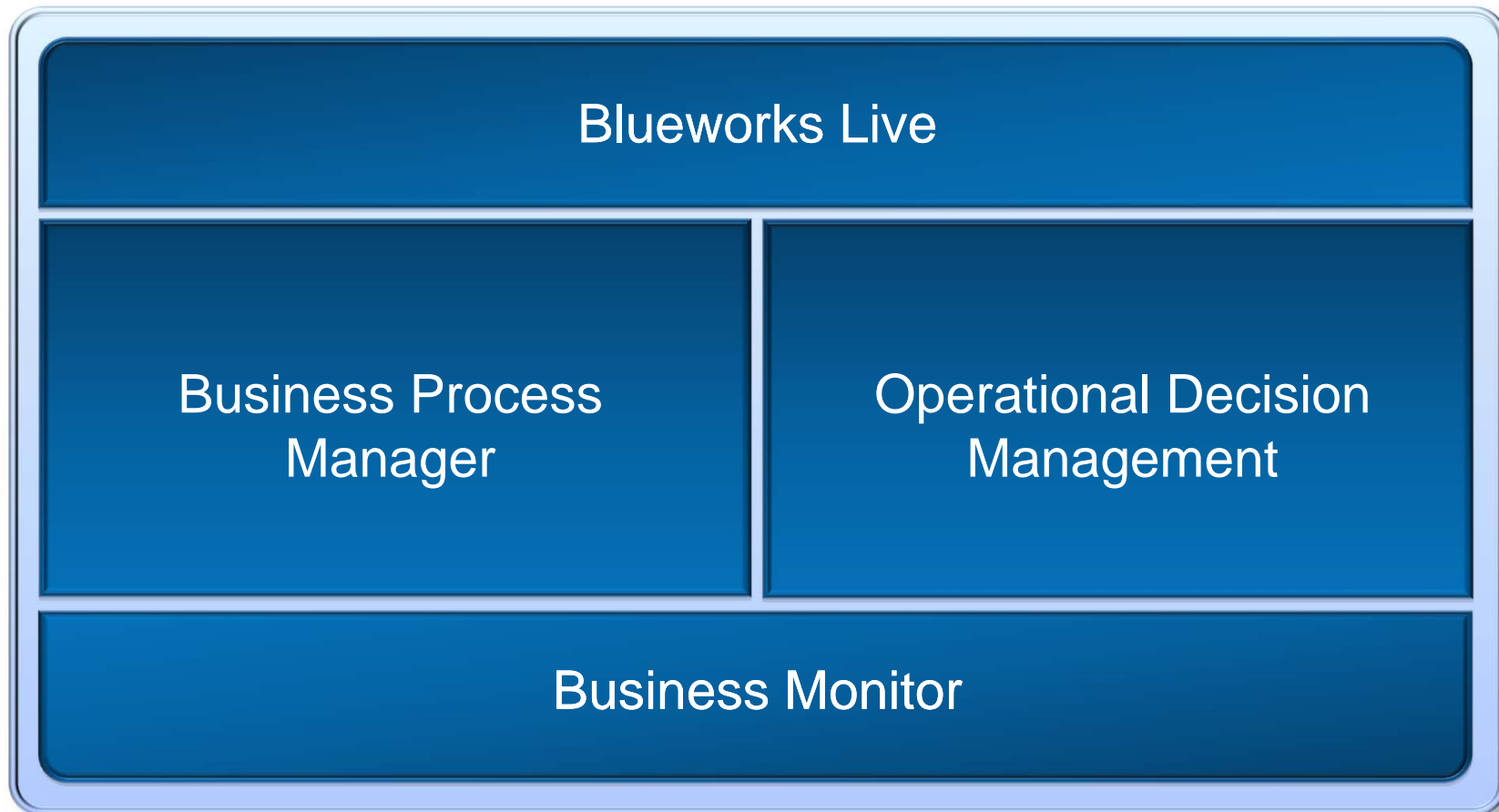
**EXECUTE MISSION-CRITICAL  
PROCESSES AT SCALE**

# Agenda

How to leverage IBM's Business Process Management and Operational Decision Management solutions for greater agility on the zEnterprise platform.

- Why process & decision optimization?
- Improving operational decisions through modernization
- Improving business processes, operations and outcomes
- **How the pieces fit together**

## IBM products for Business Process and Decision Management

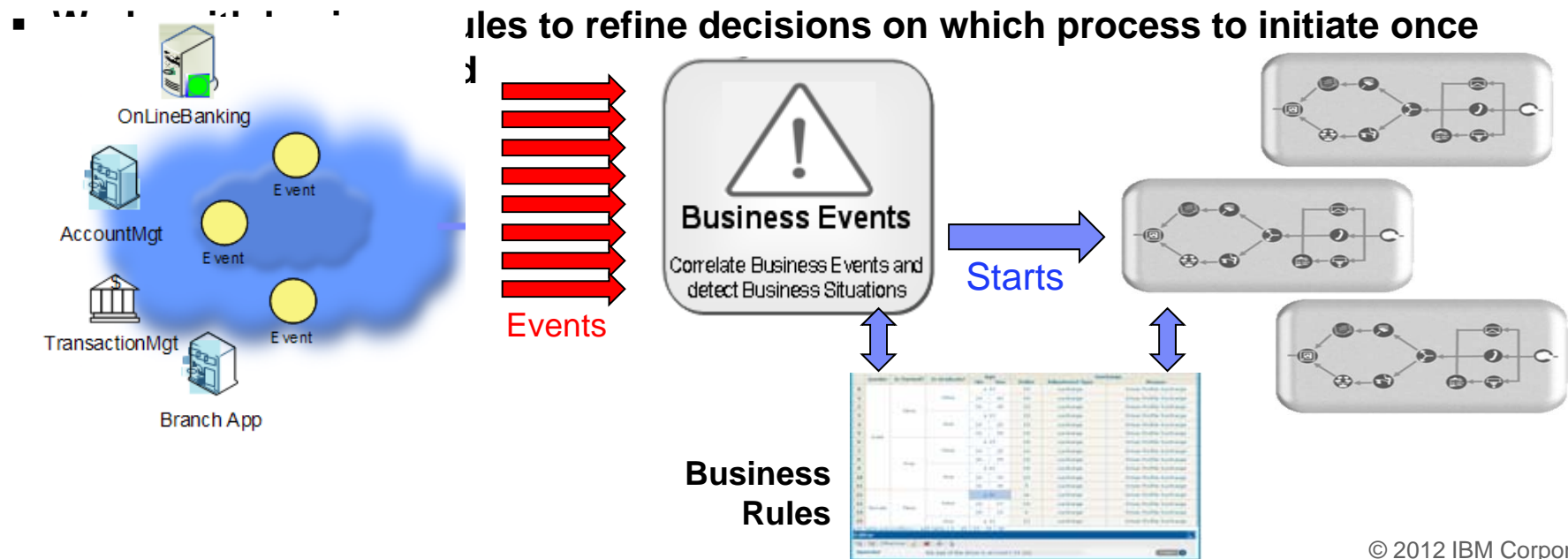


Work together to deliver effective solutions for business operation improvement



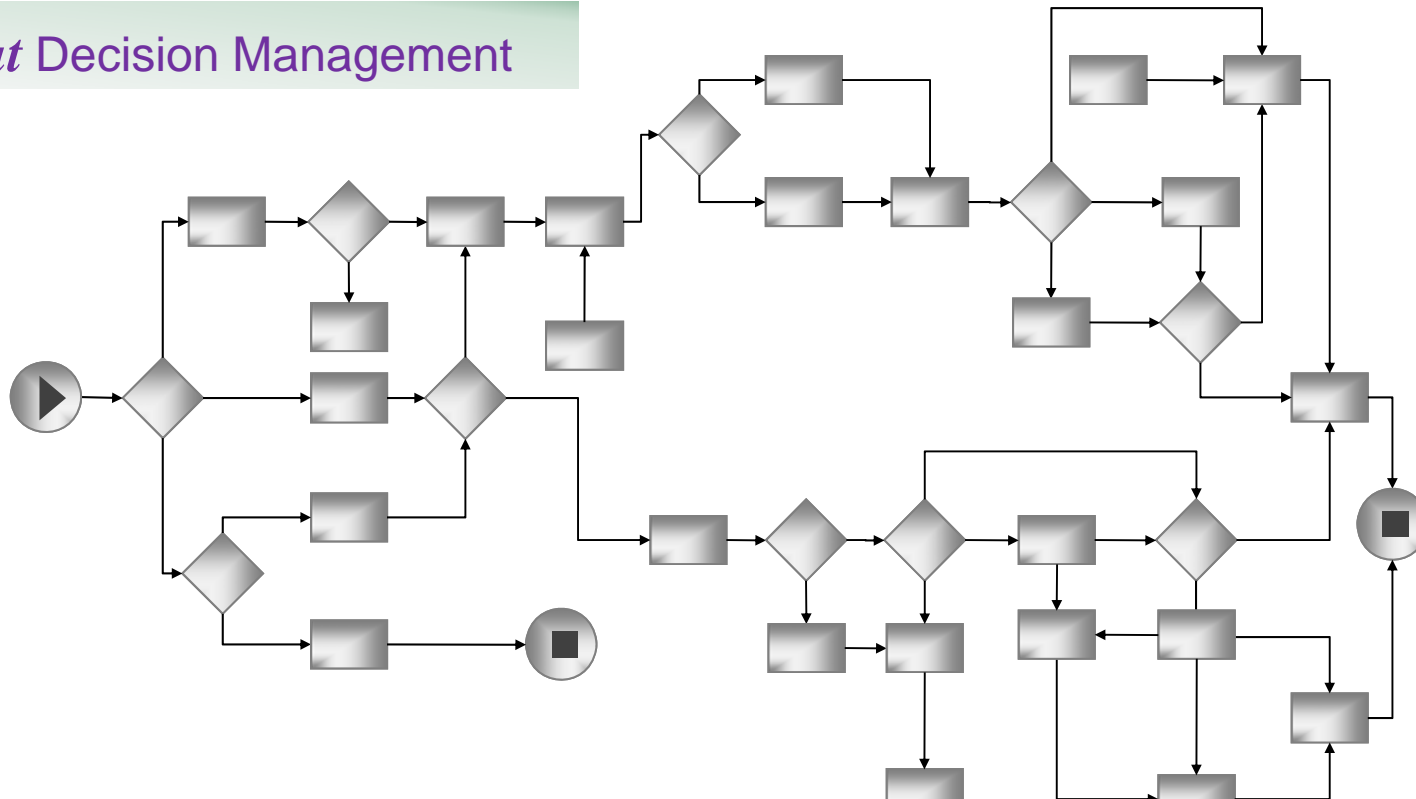
# Business events enhance BPM

- **Complex patterns of events can trigger process execution**
  - Nature of the events (Sensors, applications, customer behaviors...)
  - Decisioning horizon (from seconds to months)
  - Volume (potentially thousands of signals to analyze per second)
  - Correlation between different source of signals or events
- **Examples include detecting varied situations like fraud patterns to instantiate fraud investigation processes automatically**



## Decisions are often locked within processes

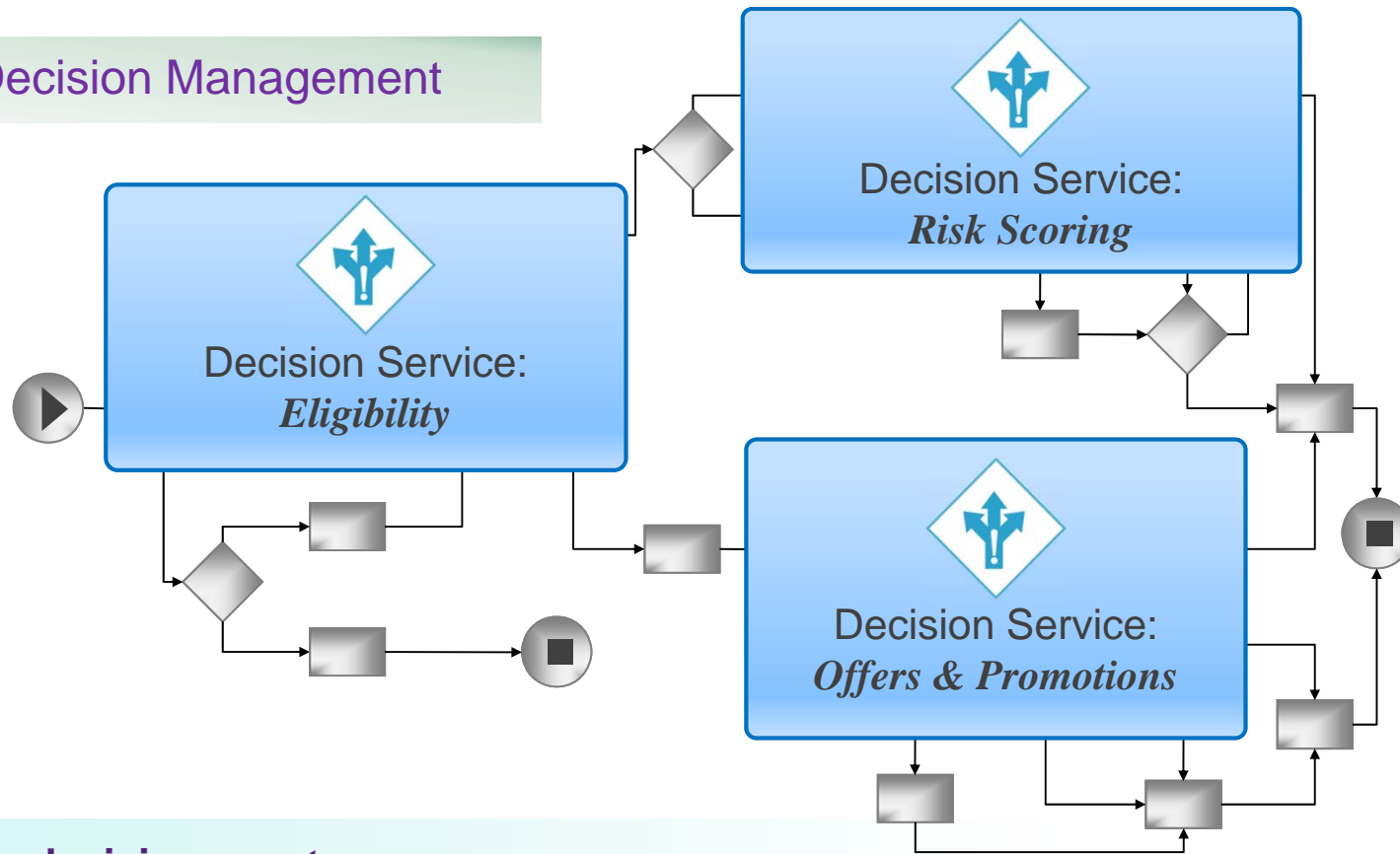
### *Without* Decision Management



- Decisions are locked in processes and applications
- Programming skills are needed to create & modify decision logic
- Speed of business change is limited by IT bandwidth
- Manual intervention increases costs & reduces customer satisfaction

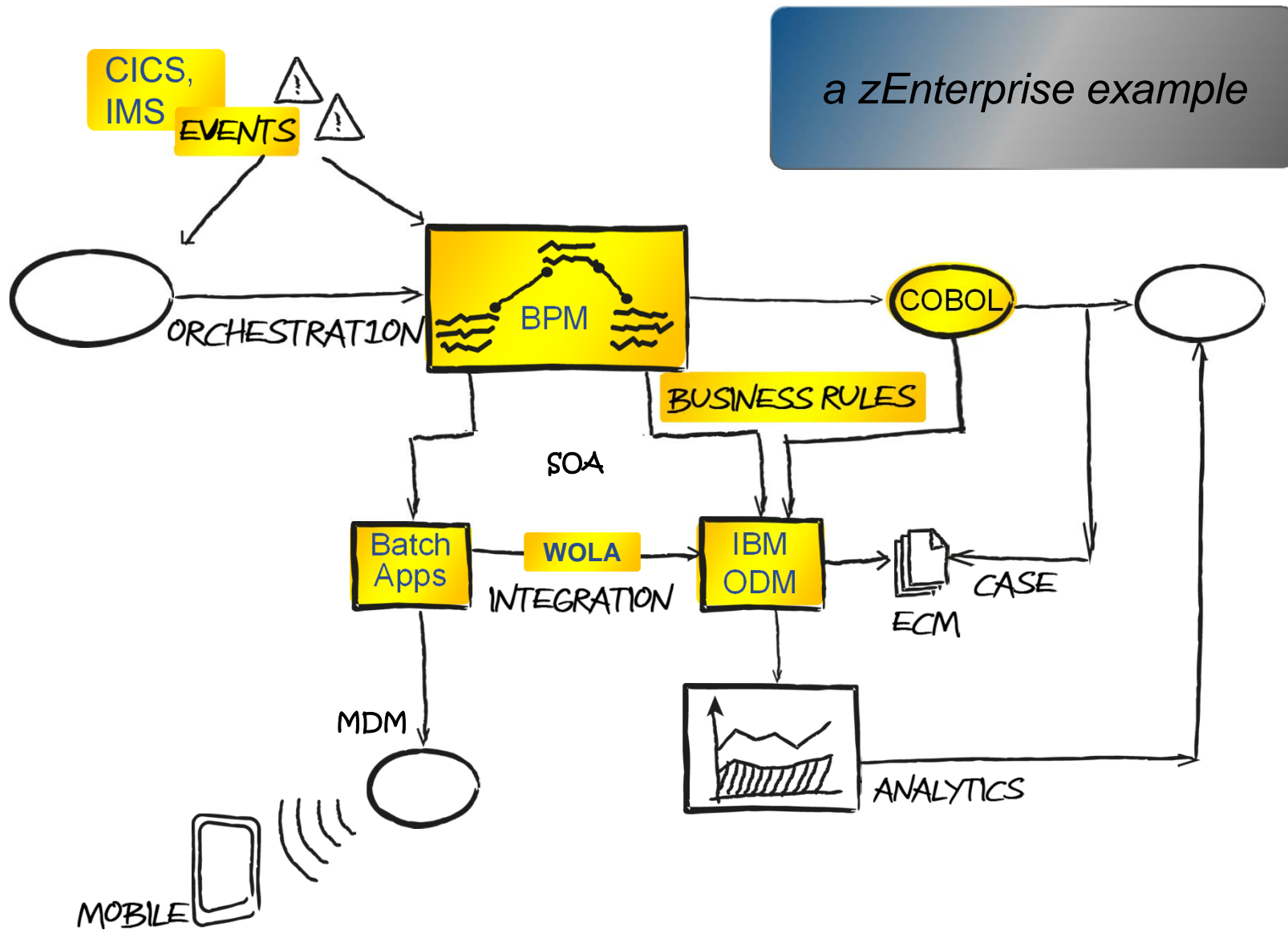
# Decision Management enables reuse across processes

*With* Decision Management



- **Reuse decision assets** across processes
- **Empower business people** to own, author and update decision services
- **Respond quickly** to changing market conditions
- **Maximize automation** and straight-through processing

# Building Blocks to Achieve Process Innovation



*a zEnterprise example*

# Thank You



© Copyright IBM Corporation 2012. All rights reserved. The information contained in these materials is provided for informational purposes only, and is provided AS IS without warranty of any kind, express or implied. IBM shall not be responsible for any damages arising out of the use of, or otherwise related to, these materials. Nothing contained in these materials is intended to, nor shall have the effect of, creating any warranties or representations from IBM or its suppliers or licensors, or altering the terms and conditions of the applicable license agreement governing the use of IBM software. References in these materials to IBM products, programs, or services do not imply that they will be available in all countries in which IBM operates. Product release dates and/or capabilities referenced in these materials may change at any time at IBM's sole discretion based on market opportunities or other factors, and are not intended to be a commitment to future product or feature availability in any way. IBM, the IBM logo, Rational, the Rational logo, Telelogic, the Telelogic logo, and other IBM products and services are trademarks of the International Business Machines Corporation, in the United States, other countries or both. Other company, product, or service names may be trademarks or service marks of others.

# Trademarks

•The following are trademarks of the International Business Machines Corporation in the United States and/or other countries.

- |               |                |                   |              |
|---------------|----------------|-------------------|--------------|
| •AIX*         | •FICON*        | •POWER7*          | •System z*   |
| •BladeCenter* | •IBM*          | •PR/SM            | •Tivoli*     |
| •CICS*        | •IBM (logo)*   | •Smarter Banking* | •WebSphere*  |
| •Cognos*      | •POWER*        | •System p*        | •zEnterprise |
| •DataPower*   | •Power Systems | •System x*        | •z/OS*       |
| •DB2*         | •POWER4        | •System z10*      | •z/VM*       |

\* Registered trademarks of IBM Corporation

•The following are trademarks or registered trademarks of other companies.

- Adobe, the Adobe logo, PostScript, and the PostScript logo are either registered trademarks or trademarks of Adobe Systems Incorporated in the United States, and/or other countries.
- IT Infrastructure Library is a registered trademark of the Central Computer and Telecommunications Agency which is now part of the Office of Government Commerce.
- Intel, Intel logo, Intel Inside, Intel Inside logo, Intel Centrino, Intel Centrino logo, Celeron, Intel Xeon, Intel SpeedStep, Itanium, and Pentium are trademarks or registered trademarks of Intel Corporation or its subsidiaries in the United States and other countries.
- Linux is a registered trademark of Linus Torvalds in the United States, other countries, or both.
- Microsoft, Windows, Windows NT, and the Windows logo are trademarks of Microsoft Corporation in the United States, other countries, or both.
- Windows Server and the Windows logo are trademarks of the Microsoft group of countries.
- ITIL is a registered trademark, and a registered community trademark of the Office of Government Commerce, and is registered in the U.S. Patent and Trademark Office.
- UNIX is a registered trademark of The Open Group in the United States and other countries.
- Java and all Java based trademarks and logos are trademarks or registered trademarks of Oracle and/or its affiliates.
- Cell Broadband Engine is a trademark of Sony Computer Entertainment, Inc. in the United States, other countries, or both and is used under license therefrom.
- Linear Tape-Open, LTO, the LTO Logo, Ultrium, and the Ultrium logo are trademarks of HP, IBM Corp. and Quantum in the U.S. and other countries.

\* Other product and service names might be trademarks of IBM or other companies.

•Notes:

- Performance is in Internal Throughput Rate (ITR) ratio based on measurements and projections using standard IBM benchmarks in a controlled environment. The actual throughput that any user will experience will vary depending upon considerations such as the amount of multiprogramming in the user's job stream, the I/O configuration, the storage configuration, and the workload processed. Therefore, no assurance can be given that an individual user will achieve throughput improvements equivalent to the performance ratios stated here.
- IBM hardware products are manufactured from new parts, or new and serviceable used parts. Regardless, our warranty terms apply.
- All customer examples cited or described in this presentation are presented as illustrations of the manner in which some customers have used IBM products and the results they may have achieved. Actual environmental costs and performance characteristics will vary depending on individual customer configurations and conditions.
- This publication was produced in the United States. IBM may not offer the products, services or features discussed in this document in other countries, and the information may be subject to change without notice. Consult your local IBM business contact for information on the product or services available in your area.
- All statements regarding IBM's future direction and intent are subject to change or withdrawal without notice, and represent goals and objectives only.
- Information about non-IBM products is obtained from the manufacturers of those products or their published announcements. IBM has not tested those products and cannot confirm the performance, compatibility, or any other claims related to non-IBM products. Questions on the capabilities of non-IBM products should be addressed to the suppliers of those products.
- Prices subject to change without notice. Contact your IBM representative or Business Partner for the most current pricing in your geography.