

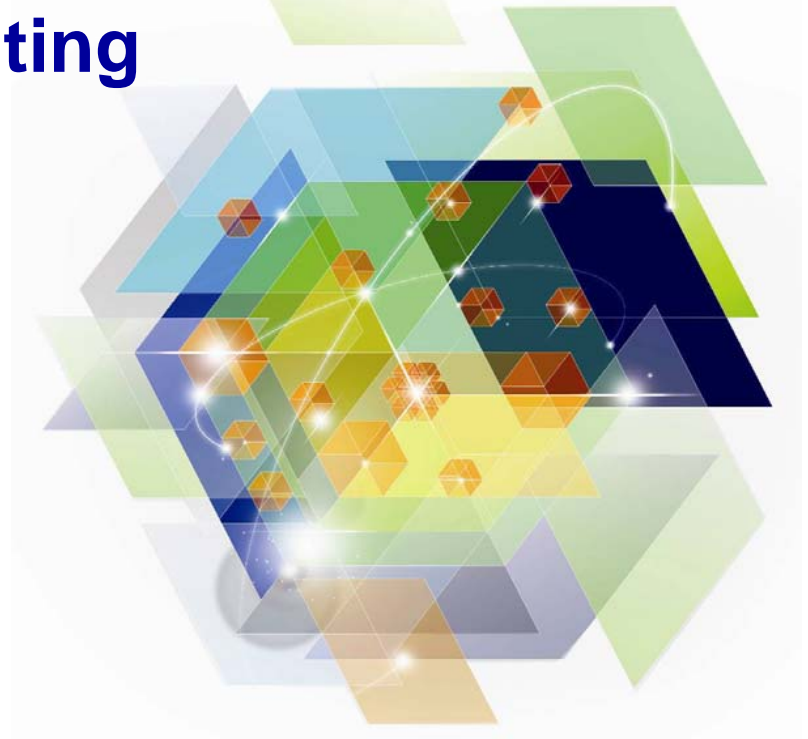


IBM System z Strategy and Direction – The Road to Smarter Computing

Doug Balog

General Manager, IBM System z

21 August 2012



On a Smarter Planet, information-centric processes are exploding in growth ...



China online banking **transactions tripled** from 50B to 150B from 2009 to 2011¹



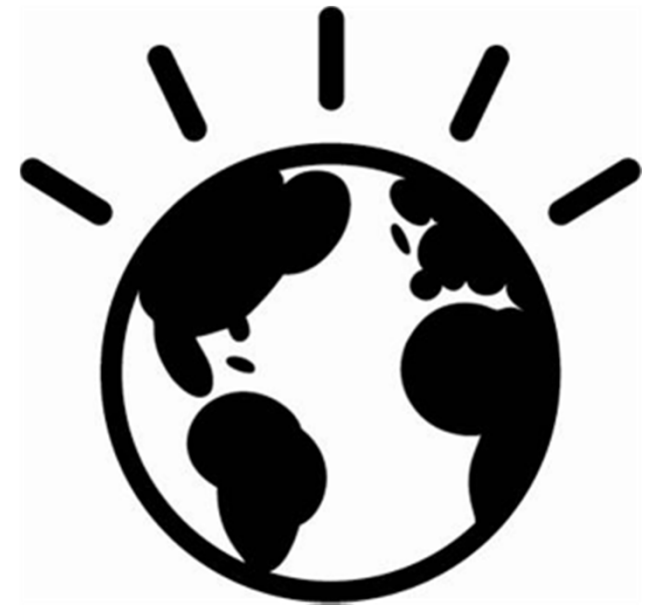
Asia's largest independent life insurance firm (AIA), had **50% transaction growth** in 2011, while serving 20M+ policy holders



US Healthcare IT outsourcing \$20B market nearly doubled 2009 – 2011, **transactions grew 35%+** annually



European central government System z workload growth rate 2007 – 2011: **25%+**



1. According to PBOC (the People's Bank of China)

We are entering a new era of Information Technology

Process-Centric era



- Business process automation
- Bottom-line improvement
- Long business cycle
- Terabytes of largely structured data

Information-Centric era



- Real-time, pattern-based action
- Top-line revenue growth
- Reactive for shorter product cycles
- Zettabytes of largely unstructured data

Innovative clients are implementing new technologies to ...

Deliver new business opportunities ...

by using actionable insight for information-centric processes

Capture new markets and drive top-line revenue growth ...

by strengthening the customer experience

React to shorter product cycles and invest in new services ...

by delivering IT efficiency for core business transactions

The industry's broadest systems portfolio

Enterprise Systems

IBM zEnterprise / Power Systems

Security of Data

Infrastructure Efficiency

Information Delivery



Expert Integrated Systems

IBM PureSystems

Built-in Expertise

Integrated by Design

Simplified Experience



Smarter Storage

Efficient by Design

Self-optimizing

Cloud Agile



Volume Systems

Cost

Scale

Ecosystem Leverage

Systems design matters

Enterprise Systems



System z

- Multi-architecture, real-time analytics and built-in security
- #1 revenue share in >\$250K servers
- New clients: 140+ since z196 launch, with 36% in Growth Markets
- 2012: Plan for system capacity increase, even greater resilience and security



Power Systems

- Portfolio breadth, complex analytics (Watson) and secure virtualization for private clouds
- #1 Unix revenue share, with 16 consecutive quarters of share gains
- Competitive displacements: 2,400+ for more than \$2.2B, since 1Q10
- 2012: Plan for 140% system capacity increase

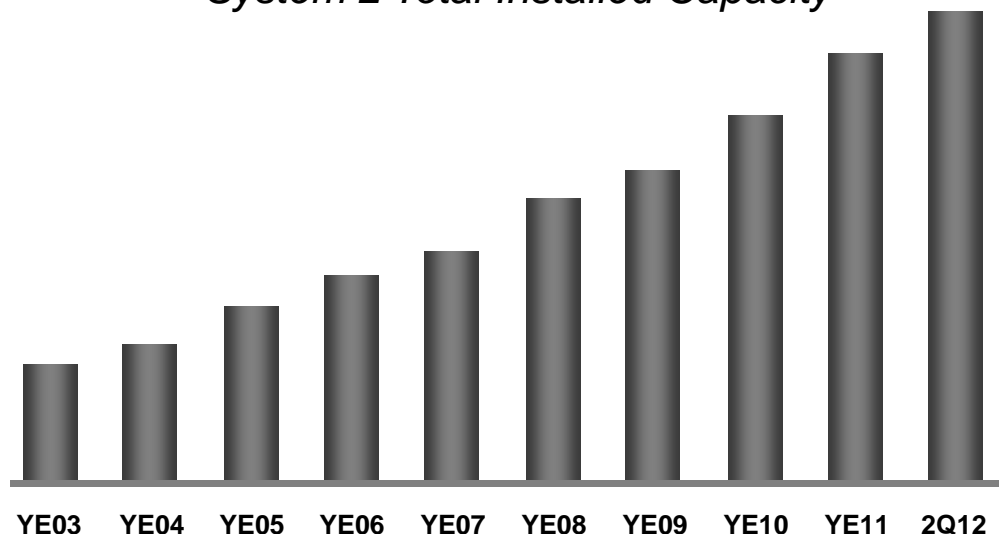


System z share per IDC 4Q11 Server Tracker (Feb12)

Power Systems share per IBM 1Q12 earnings statement (Apr 12)

Clients continue to invest in the value of zEnterprise

System z Total Installed Capacity



150+

BladeCenter Extension units; 1100+ blades shipped*

140+

new accounts since 3Q10 zEnterprise launch

1/3

new accts expansion in growth markets

2/3+

of Top 100 customers have installed IFLs**

1/3+

System z customers have IFLs installed

1/5+

of total installed MIPS run Linux

[as of 2Q12]

zEnterprise momentum in IBM growth initiatives

Smarter Planet

Double-digit

growth
year to year
in 2Q12

U.S. – Utility

Smart meter solution helps improve grid efficiency and lower energy consumption.

Analytics

Double-digit

growth
year to year
in 2Q12

Europe – Gov't

Near real-time monitoring and analysis to vet visiting foreign nationals.

Cloud

Double-digit

growth
year to year
in 2Q12

China – Public Sector

GPS-enabled management of farm equipment through zEnterprise cloud solution.

Growth Markets

11%

growth
year to year
in 2Q12

So. America – Telco

New-to-z client uses hybrid solution to securely support its growing customer base.

IBM zEnterprise System integrates resources for ...



Operational analytics
 Deliver information and insight across the enterprise

Trusted security and data resilience
 Provide unmatched security and reliability for core business processes

Efficiency at scale
 Enable flexible delivery of services through a private enterprise cloud



Operational analytics can rapidly deploy actionable insight

Zero enterprise
data loss

**8 seconds or
less** for complex
queries¹

Real-time *insights*

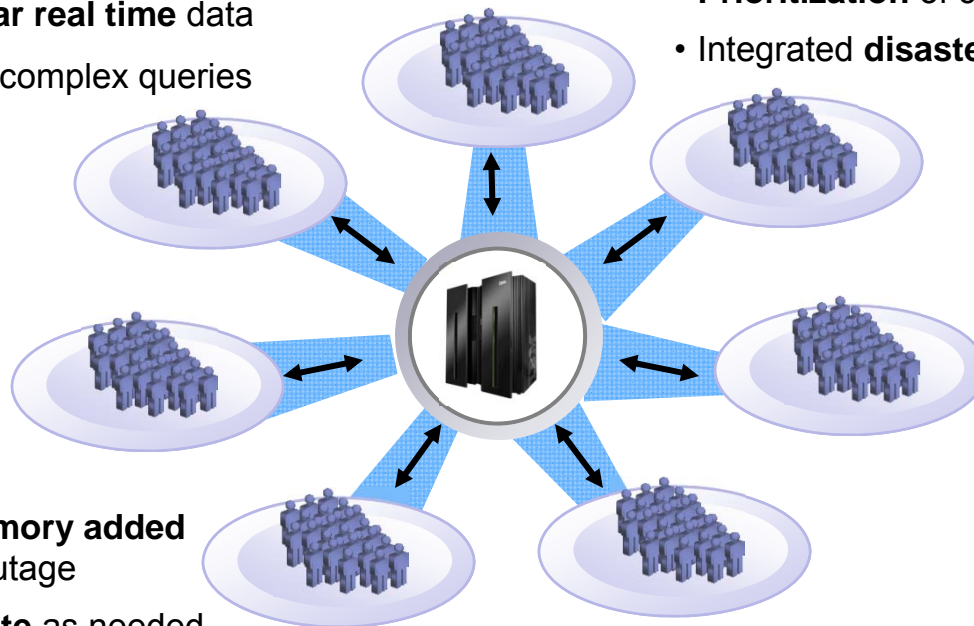
- Uncover new business opportunities at time of impact
- Reduce risk at time of transaction
- Predict outcomes at time of decision
- Deploy decision services to bring intelligence and predictive insight into repeatable decisions

Empowering employees, customers and suppliers

- Simplify access to current, consistent information
- Allow real-time intelligent interactions during the lifecycle of business transactions
- Integrate analytics in to operational processes
- Make fact-based decisions

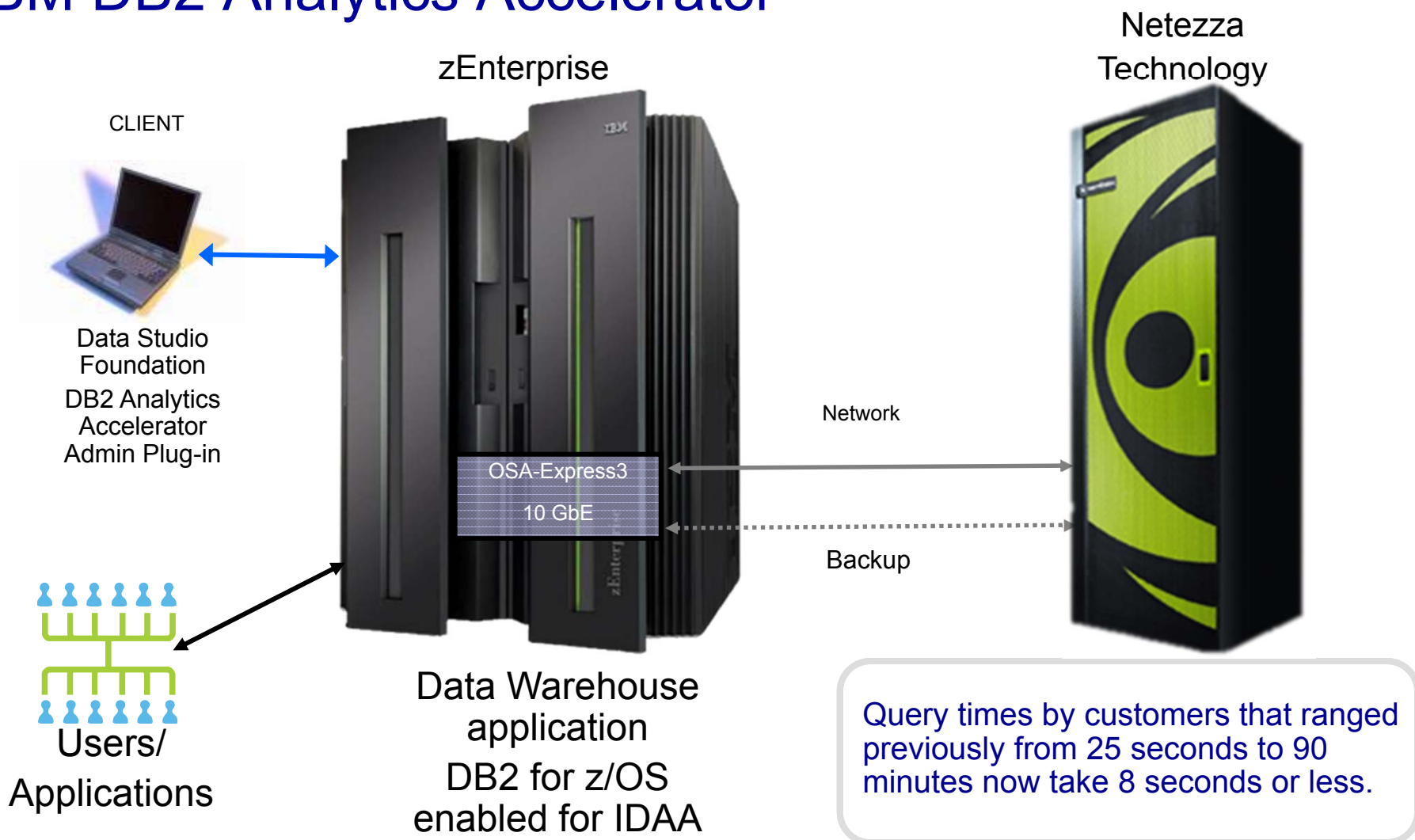
The analytics opportunity on zEnterprise

- **Co-locations** of data warehousing, business analytics, transactional data
- Reduced **data movement**
- **Lower latency** and **near real time** data
- **Rapid acceleration** of complex queries
- High **security** (EAL5)
- High **availability** (99.999%)
- Performs at **100% capacity**
- **Prioritization** of critical queries & workloads
- Integrated **disaster recovery**



- **Processors, disk, memory added dynamically** without outage
- **Pre-install then activate** as needed
- **Flexible deployment options**
- **Centralized, scalable** infrastructure
- **Virtualization**
- Start with your **final architecture**

Technology in action: IBM DB2 Analytics Accelerator





Operational analytics can rapidly deploy actionable insight

“The IBM DB2 Analytics Accelerator delivers the speed to create the insights we need to work smarter. Putting the right answers into the hands of decision makers in seconds, across our business enables us to quickly adapt and grow.”

– *Reto Estermann, Director,
Information Technology, SwissRe*

Swiss Re



“We deployed our production business analytics environment on System z within 11 days, providing us with an efficient platform that ensures the flexibility, availability and reliability that our users demand. Creating a new Cognos server used to take months, and now it takes just hours.”

– *Adrienne DiPrima, Manager,
Strategic Technologies Support,
Miami-Dade County*





Trusted security and data resilience reinforces customer trust

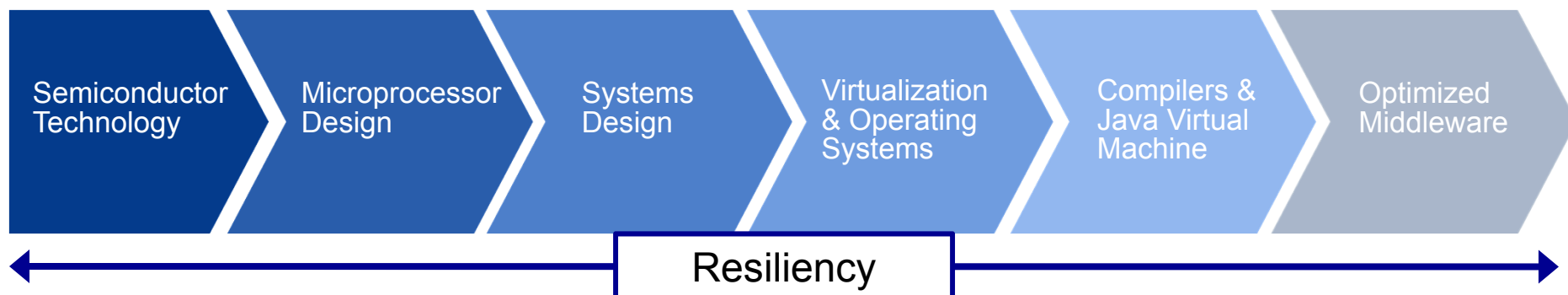
Deliver **EAL5⁺**
highest level of
certification for
general purpose
servers

Save up to **70%**
in security audit and
compliance overhead

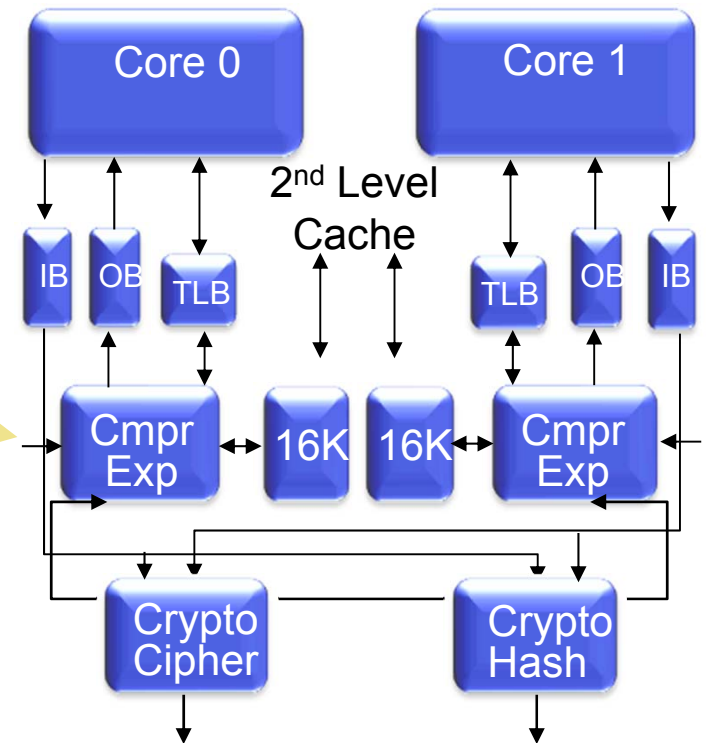
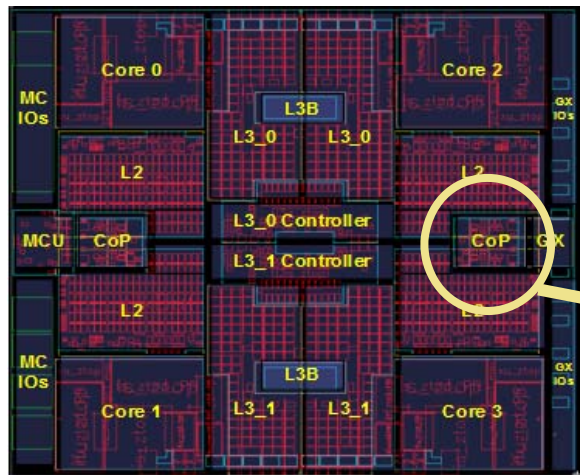
- Conduct business *with the highest level of integrity*
 - Reduce risk of security and data breaches
 - Secure sensitive data and identities
 - Uncover possible intrusion attempts
 - Enforce policy compliance and enhance security intelligence
- Continuous *availability to increase growth*
 - Reduce the impact to business by eliminating outages which cost on average >\$500K
 - Eliminate the costs for an hour-long outage which can vary from \$225 to \$89K an hour and can affect millions of users

An optimized system

Resiliency built into zEnterprise foundation



Technology in action: In-processor accelerators



- Cryptographic / data compression co-processor
 - Invoked by special instructions
 - Tightly integrated with microprocessor core

- Many other instructions fit this category
 - Floating point (hex, binary, decimal)
 - TCP/IP checksum
 - String operations



Trusted data resilience reinforces customer trust

“The new zEnterprise is the heart of our health insurance system, responsible for integrating all data and exchanging it securely with other institutions and healthcare partners. We have grown from 400,000 to 1.7 million transactions per day, and we continue to enjoy full availability of services and data around the clock.”

– *Mirjana Kregar, CIO, ZZZS*



“Colony Brands puts Customer Trust and Loyalty as top priorities within the organization. We are proud to leverage IBM's zEnterprise throughout our organization due to the Trusted, Proven, and Secure nature of the platform.

Within zEnterprise exists numerous Security components that help reduce our overall risk. For example, Encryption on zEnterprise is critical to our company success to allow us to protect customer privacy data while it is stored on our mainframe and while it is exchanged with other parties for processing.”

– *Todd Handel, Director,
IT Strategy and
Architecture, Colony
Brands*



BRANDS, INC.
Colony



Efficiency at scale enables smart IT investments

Support **57M**
account postings
per hour with SAP
solutions

Up to **70%** lower
TCO over x86
technology for Oracle
Enterprise database
solutions

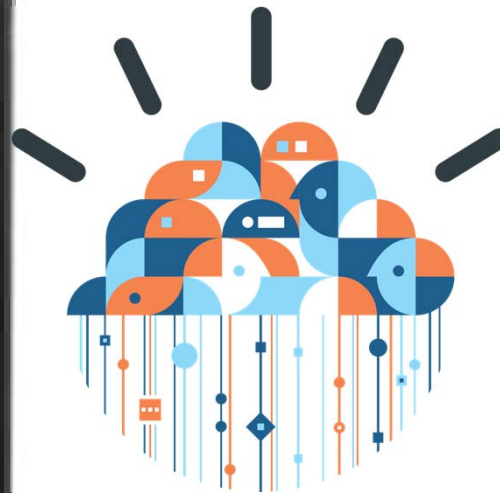
- An **efficient infrastructure** improves business results
 - Reduce costs to enable investments in new services
 - Accelerate deployment of new applications
 - Provide an efficient deployment model for new and existing services to co-exist and deploy in a cloud environment
 - Support unplanned increases in business demands by deploying virtual servers in minutes versus days
- **Core business efficiency**
 - Reduce software costs up to 90% by consolidating and managing Oracle licenses
 - Minimize cloud failures that have cost businesses \$70M+
 - Increase labor productivity up to 70% through industry leading resource utilization
 - Provide millions of transactions/day with <1 second response

Accrete workloads on zEnterprise BladeCenter Extension creates efficiencies

- Improved administrator productivity
- Low latency access to critical data
- Consolidate Linux workloads and heavy I/O workloads on Linux for System z
- Consolidate light workloads and heavy CPU workloads on zBX blades
- Datapower appliance blade yields stunning price performance



Technology in action: Establishing private cloud IaaS delivery model



- Eases service deployment while rapidly scaling to the dynamic needs of users
- Customizable with design and deployment patterns improving efficiency
- Offers efficiency with large-scale Linux consolidation



Efficiency at scale enables smart IT investments

“Because of the way in which our online programs work and our students come from literally around the world, the tool had to be available 24x7. Our zEnterprise Cloud solution provides 99.999% availability so there is no disruption to our students.”

– *Harry Williams, CTO, Marist College*

“When consolidating all Linux-based Business Support applications and Oracle databases operating at the EUROCONTROL Maastricht Upper Area Control Centre (MUAC) from distributed servers to the System z Ensemble, MUAC reduced floor space by 80%, reduced energy consumption by as much as 58% per year, reduced need for hardware maintenance effort by 43% and saw 50% savings in software, particularly for Oracle, all running on System z with Linux.”

“With the great savings achieved with the System z Ensemble, MUAC saw a 43% ROI.”

– *Huub Meertens, Head of the SUP Engineering Section, EUROCONTROL MUAC*



Delivering smarter computing with zEnterprise

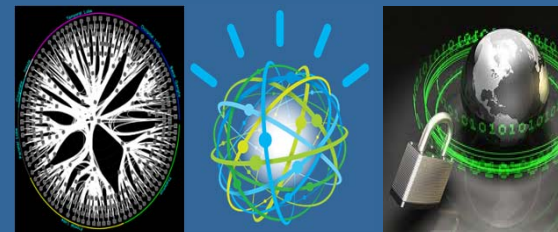
- Continued investment in improving the virtualization and management capabilities for hybrid computing environments
- Expand hybrid computing capabilities
- zEnterprise and STG to deliver enterprise-wide management capabilities across all STG systems with Tivoli

Far-reaching research

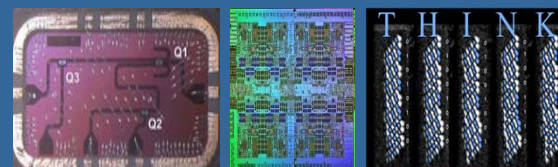
Applications



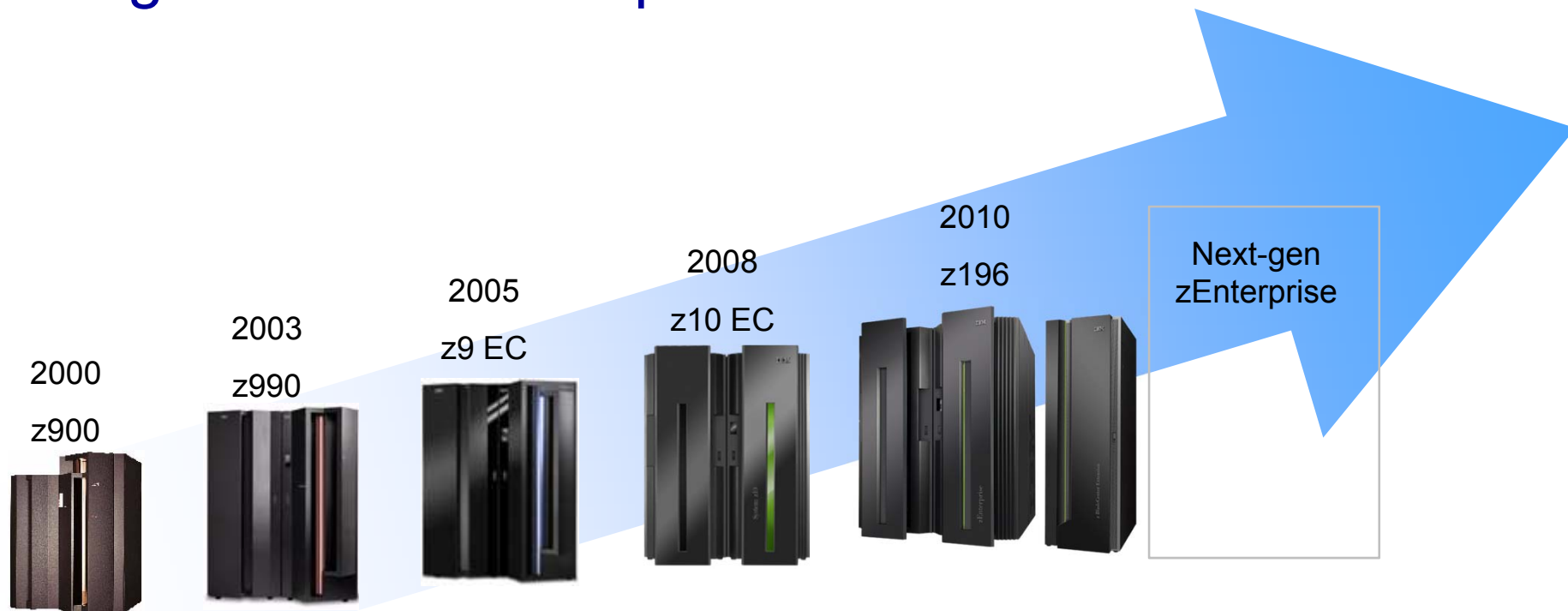
Architectures



Core Technology

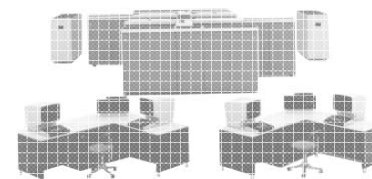
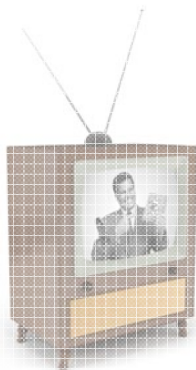
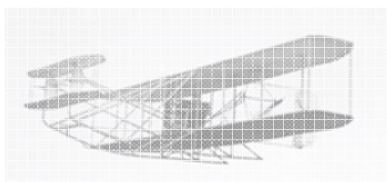


Next-generation zEnterprise – the z196 follow on



* All statements regarding IBM future direction and intent are subject to change or withdrawal without notice, and represent goals and objectives only.

Lasting technologies continuously innovate and advance while preserving core values



Summary

Operational analytics to enable business opportunities

- Most sophisticated data warehousing and analytics solutions with the fastest query performance
- Leverage data to build competitive advantage

Trusted data resiliency for unmatched security and reliability

- Most secure system with 99.999% reliability
- Unified platform for rapid development of secure applications end-to-end

Efficiency at scale

- Most efficient and fastest system for mission critical workloads
- Increased efficiency will free up IT resources to focus on new services to drive growth



Thank you.

Trademarks

•The following are trademarks of the International Business Machines Corporation in the United States and/or other countries.

- | | | | |
|---------------|----------------|-------------------|--------------|
| •AIX* | •FICON* | •POWER7* | •System z* |
| •BladeCenter* | •IBM* | •PR/SM | •Tivoli* |
| •CICS* | •IBM (logo)* | •Smarter Banking* | •WebSphere* |
| •Cognos* | •POWER* | •System p* | •zEnterprise |
| •DataPower* | •Power Systems | •System x* | •z/OS* |
| •DB2* | •POWER4 | •System z10* | •z/VM* |

* Registered trademarks of IBM Corporation

•The following are trademarks or registered trademarks of other companies.

- Adobe, the Adobe logo, PostScript, and the PostScript logo are either registered trademarks or trademarks of Adobe Systems Incorporated in the United States, and/or other countries.
- IT Infrastructure Library is a registered trademark of the Central Computer and Telecommunications Agency which is now part of the Office of Government Commerce.
- Intel, Intel logo, Intel Inside, Intel Inside logo, Intel Centrino, Intel Centrino logo, Celeron, Intel Xeon, Intel SpeedStep, Itanium, and Pentium are trademarks or registered trademarks of Intel Corporation or its subsidiaries in the United States and other countries.
- Linux is a registered trademark of Linus Torvalds in the United States, other countries, or both.
- Microsoft, Windows, Windows NT, and the Windows logo are trademarks of Microsoft Corporation in the United States, other countries, or both.
- Windows Server and the Windows logo are trademarks of the Microsoft group of countries.
- ITIL is a registered trademark, and a registered community trademark of the Office of Government Commerce, and is registered in the U.S. Patent and Trademark Office.
- UNIX is a registered trademark of The Open Group in the United States and other countries.
- Java and all Java based trademarks and logos are trademarks or registered trademarks of Oracle and/or its affiliates.
- Cell Broadband Engine is a trademark of Sony Computer Entertainment, Inc. in the United States, other countries, or both and is used under license therefrom.
- Linear Tape-Open, LTO, the LTO Logo, Ultrium, and the Ultrium logo are trademarks of HP, IBM Corp. and Quantum in the U.S. and other countries.

* Other product and service names might be trademarks of IBM or other companies.

•Notes:

- Performance is in Internal Throughput Rate (ITR) ratio based on measurements and projections using standard IBM benchmarks in a controlled environment. The actual throughput that any user will experience will vary depending upon considerations such as the amount of multiprogramming in the user's job stream, the I/O configuration, the storage configuration, and the workload processed. Therefore, no assurance can be given that an individual user will achieve throughput improvements equivalent to the performance ratios stated here.
- IBM hardware products are manufactured from new parts, or new and serviceable used parts. Regardless, our warranty terms apply.
- All customer examples cited or described in this presentation are presented as illustrations of the manner in which some customers have used IBM products and the results they may have achieved. Actual environmental costs and performance characteristics will vary depending on individual customer configurations and conditions.
- This publication was produced in the United States. IBM may not offer the products, services or features discussed in this document in other countries, and the information may be subject to change without notice. Consult your local IBM business contact for information on the product or services available in your area.
- All statements regarding IBM's future direction and intent are subject to change or withdrawal without notice, and represent goals and objectives only.
- Information about non-IBM products is obtained from the manufacturers of those products or their published announcements. IBM has not tested those products and cannot confirm the performance, compatibility, or any other claims related to non-IBM products. Questions on the capabilities of non-IBM products should be addressed to the suppliers of those products.
- Prices subject to change without notice. Contact your IBM representative or Business Partner for the most current pricing in your geography.