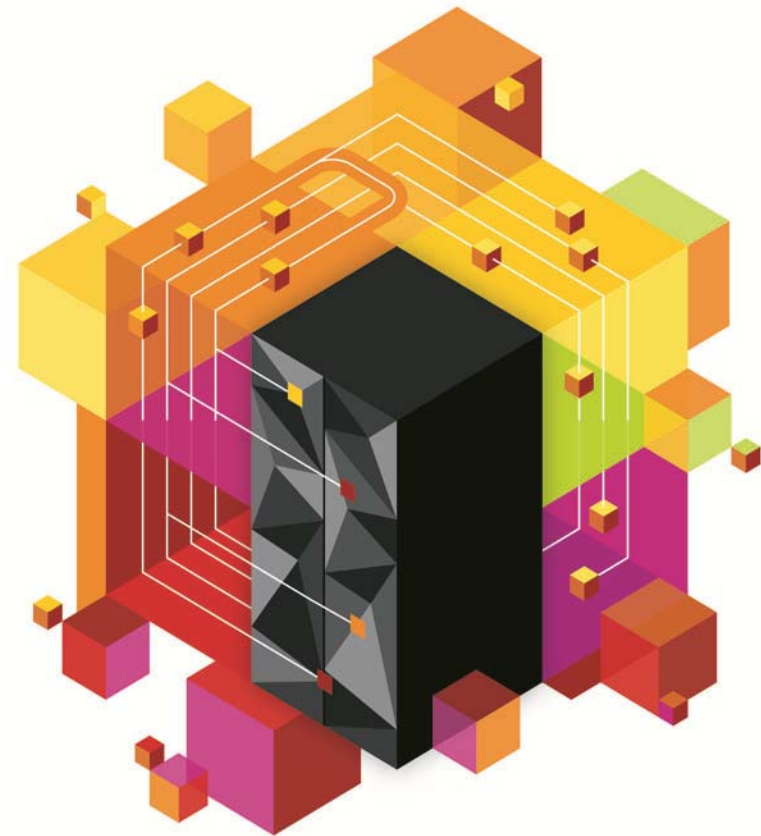


CICS V5.1

Portfolio and Platforms

Presenter – Title

Date





Session Agenda

- **CICS Portfolio Overview**
- **What is a platform?**
 - The challenge of multiple CICS regions
- **Cloud Computing**
- **Discovery and provisioning with CICS Deployment Assistant**
- **CICS Platforms**

CICS Transaction Server continues to power the planet

- CICS TS is the world's premier enterprise class transaction processor
- CICS TS enables customers to create and maintain a competitive advantage
- CICS TS continues to deliver innovative and essential new technologies

Large scale business critical workloads, some > 1bn transactions per day

Many of the worlds largest companies run their business on CICS

CICS web services is the most widely adopted CICS feature in recent history





Focus on solving three key customer challenges

- Ongoing operational pressure to drive down costs and improve efficiency
- Increased business pressure to deliver faster and with greater agility
- Ability to manage and exploit the rapidly changing technology landscape

*Operation Efficiency:
Controlling cost*

*Service Agility:
Deliver results faster*

*Cloud Enablement:
A long term investment*



The new CICS Transaction Server V5.1 delivers...

Operational Efficiency

- *Greater capacity* - achieve cost savings through consolidation
- *Managed operations* - reduce cost and risk through automation
- *Increased availability* - reduce the need for planned downtime
- *Deeper insight* - Improve decision making and audit readiness

100+
requirements
satisfied!

Service Agility

- *First-class applications* - create agile services from existing assets
 - *First-class platforms* - create agile service delivery platforms
- *Modern interfaces* - build rich web experiences for critical applications
 - *Foundational enhancements* - extend core capabilities

... with Cloud Enablement

consistent with the IBM Cloud Computing strategy
positions customers for the next transformational era in technology
moves towards a cloud oriented service delivery platform

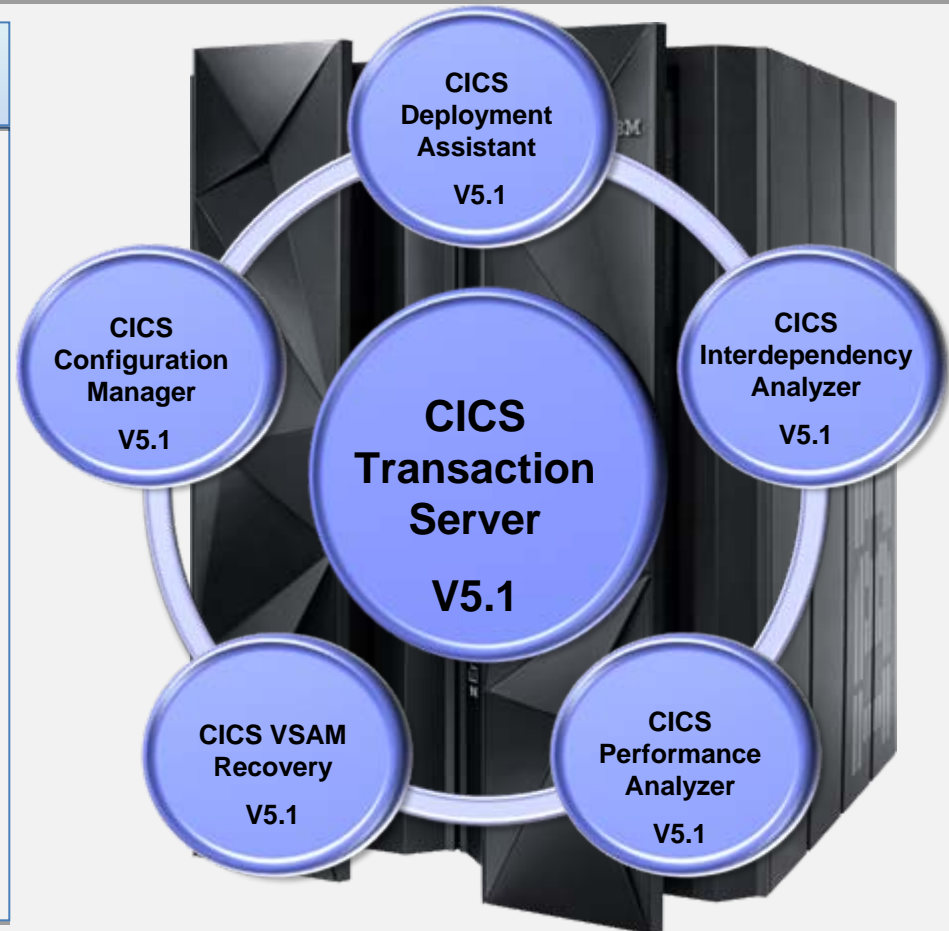


Upgrade and integrated core foundational tools suite - Five core CICS Tools – Day one CICS TS V5.1 exploitation

Fully integrated with CICS TS & CICS Explorer

Discovery and visualization aids insight into application and platform dependencies

- Automation speeds service delivery and ensures standardization and governance
- Modern, integrated user interfaces lower skills barrier
- Day-1 exploitation of CICS TS V5.1 new capabilities reduces time to value
- Five core tools support and extend the **CICS runtime**



A decorative graphic in the top left corner consisting of several 3D cubes in various colors (red, pink, orange, black) arranged in a cluster.

Once upon a time life was simple

CICS Region
Applications



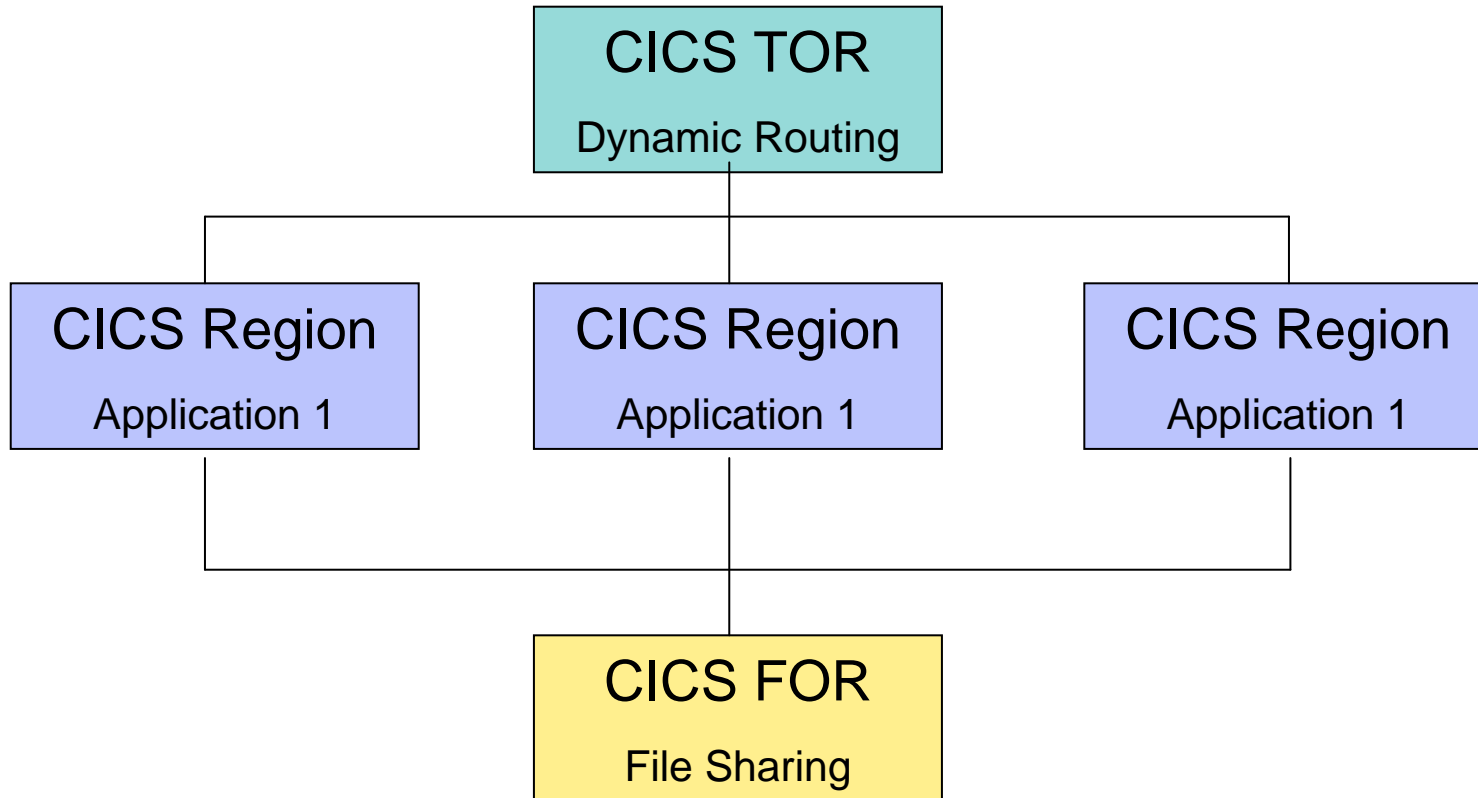
Then we had to split regions due to Virtual Storage Constraint

CICS
Region
Application 1

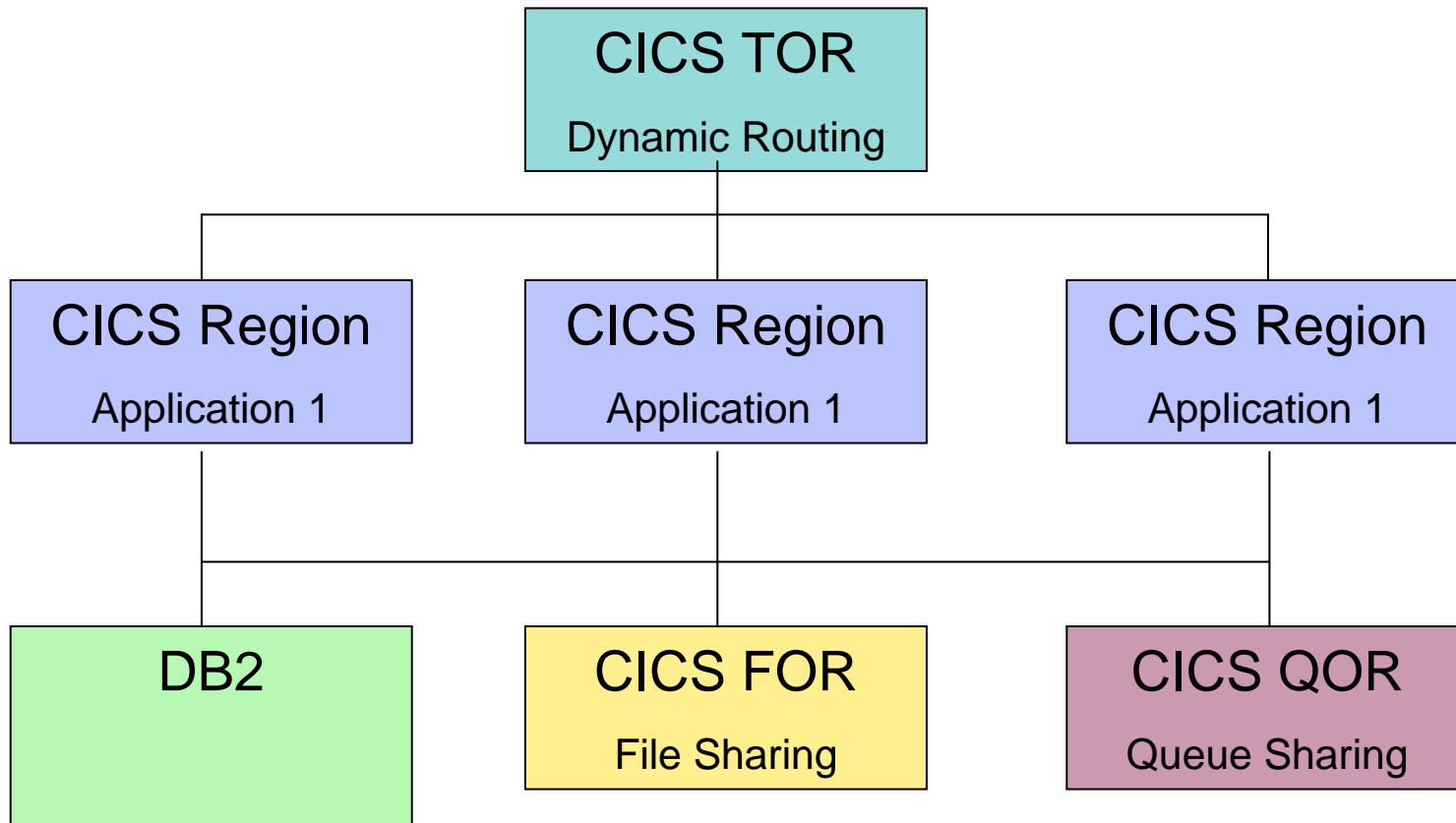
CICS
Region
Application 2

CICS
Region
Application 3

Then applications required higher availability

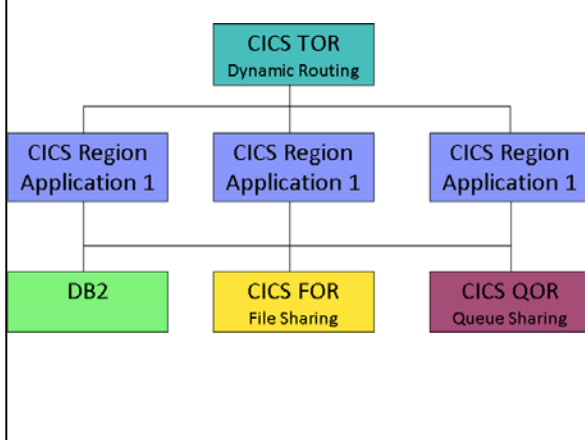


The region proliferation continued

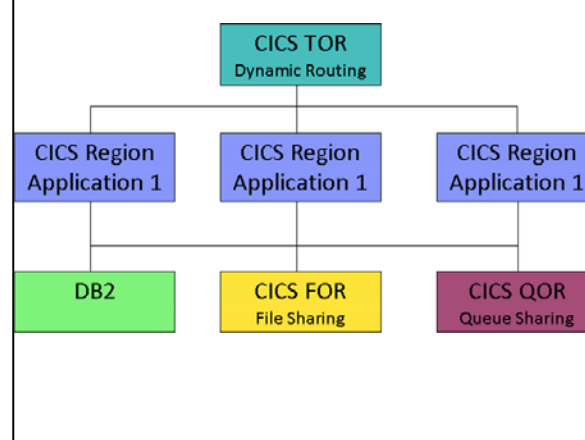


And we added even more regions

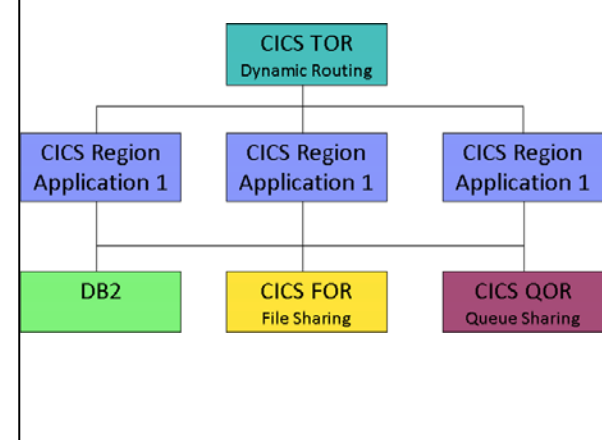
System Test



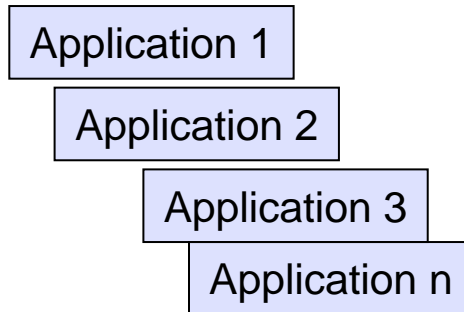
Quality Assurance



Production



Development





And then along came Cloud...



The NIST Definition of Cloud Computing

*Cloud computing is a model for enabling convenient, on-demand network access to a shared pool of configurable computing resources (e.g., networks, servers, storage, applications, and services) that can be rapidly provisioned and released with minimal management effort or service provider interaction. This cloud model promotes availability and is composed of five **essential characteristics**, three **service models**, and four **deployment models**.*



Cloud Computing

- **Deployment models**

- Private cloud
- Community cloud
- Public cloud
- Hybrid cloud

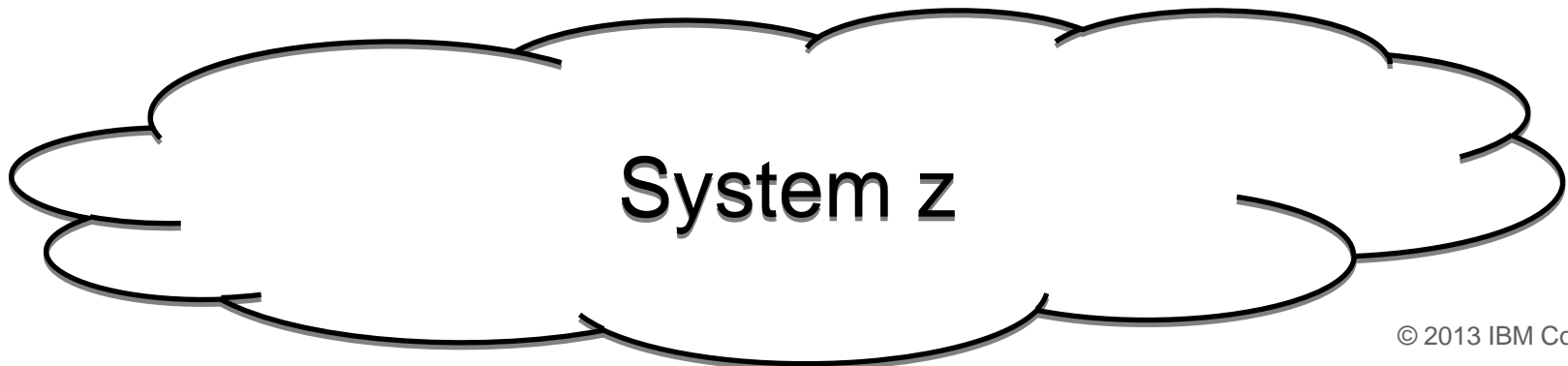
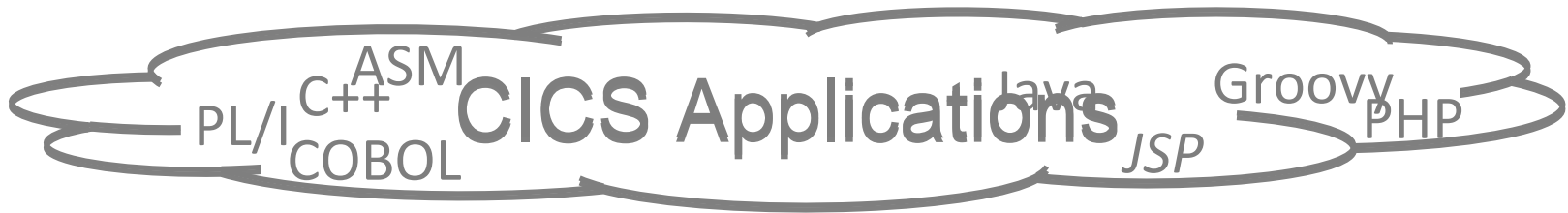
- **Service models**

- Cloud software as a service (SaaS)
- Cloud platform as a service (PaaS)
- Cloud infrastructure as a service (IaaS)



Cloud Computing...

- **Cloud service models**





Essential Characteristics of Cloud

- **On-demand self-service**
 - A consumer can unilaterally provision computing capabilities, such as server time and network storage, as needed automatically without requiring human interaction with each service provider
- **Broad network access**
 - Capabilities are available over the network and accessed through standard mechanisms that promote use by heterogeneous thin or thick client platforms (e.g., mobile phones, tablets, laptops, and workstations)
- **Resource pooling**
 - The provider's computing resources are pooled to serve multiple consumers using a multi-tenant model, with different physical and virtual resources dynamically assigned and reassigned according to consumer demand ...
- **Rapid elasticity**
 - Capabilities can be elastically provisioned and released, in some cases automatically, to scale rapidly outward and inward commensurate with demand. To the consumer, the capabilities available for provisioning often appear to be unlimited ...
- **Measured service**
 - Cloud systems automatically control and optimize resource use by leveraging a metering capability at some level of abstraction appropriate to the type of service ... Resource usage can be monitored, controlled, and reported, providing transparency for both the provider and consumer of the utilized service



CICS Transaction Server provides a solid foundation

How do we make CICS applications and management more agile?

“How can I deploy applications in CICS more easily?”

On-demand Self Service

CICS Explorer and the collection of portfolio tools enable a greater degree of automation

Broad Network Access

CICS put SOA at its core, delivering greater integration and connectivity across the enterprise

Resource Pooling

CICS is a first-class resource manager built to efficiently manage system and application resources

“How can I better manage my CICS platform?”

Rapid Elasticity

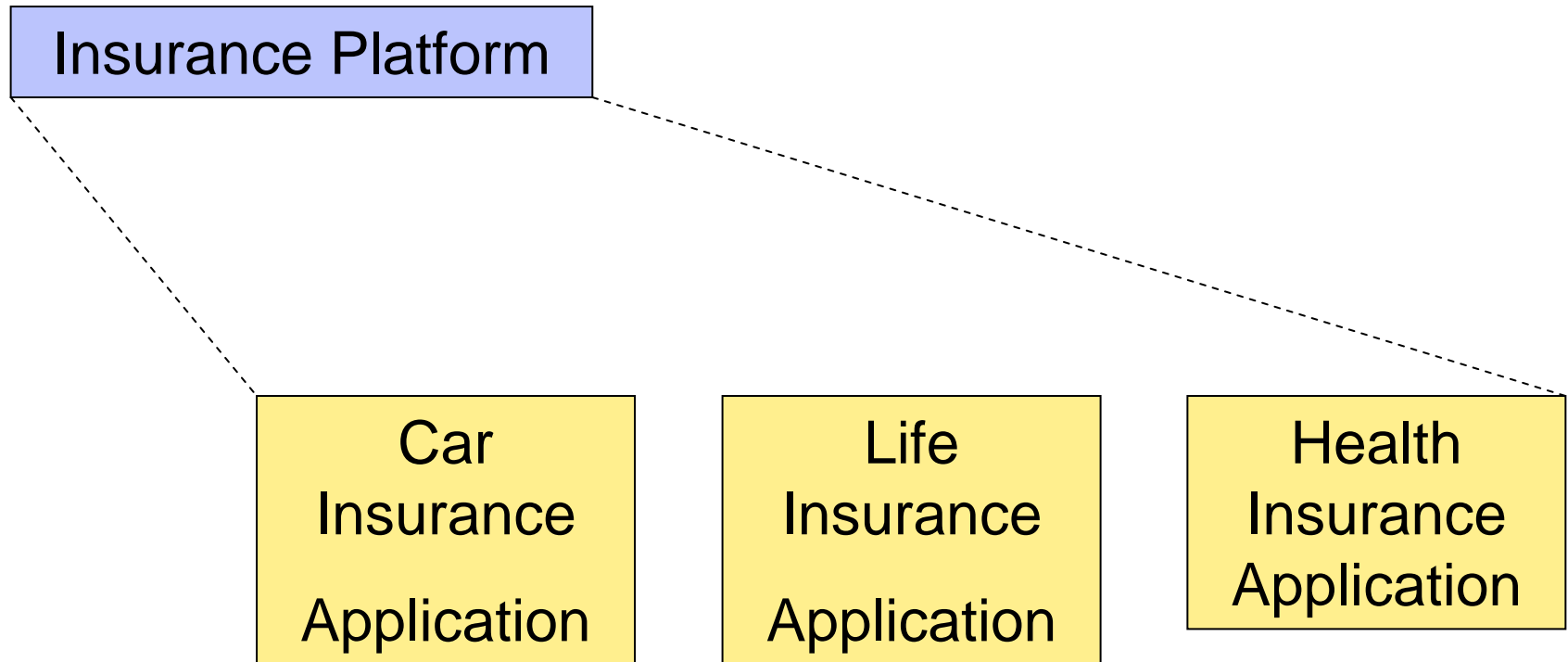
CICS WLM, combined with z/OS, enables CICS to rapidly respond to fluctuating workload demands

Measured Service

CICS has extensive monitoring and statistics to enable customers to understand the cost of their applications running in CICS

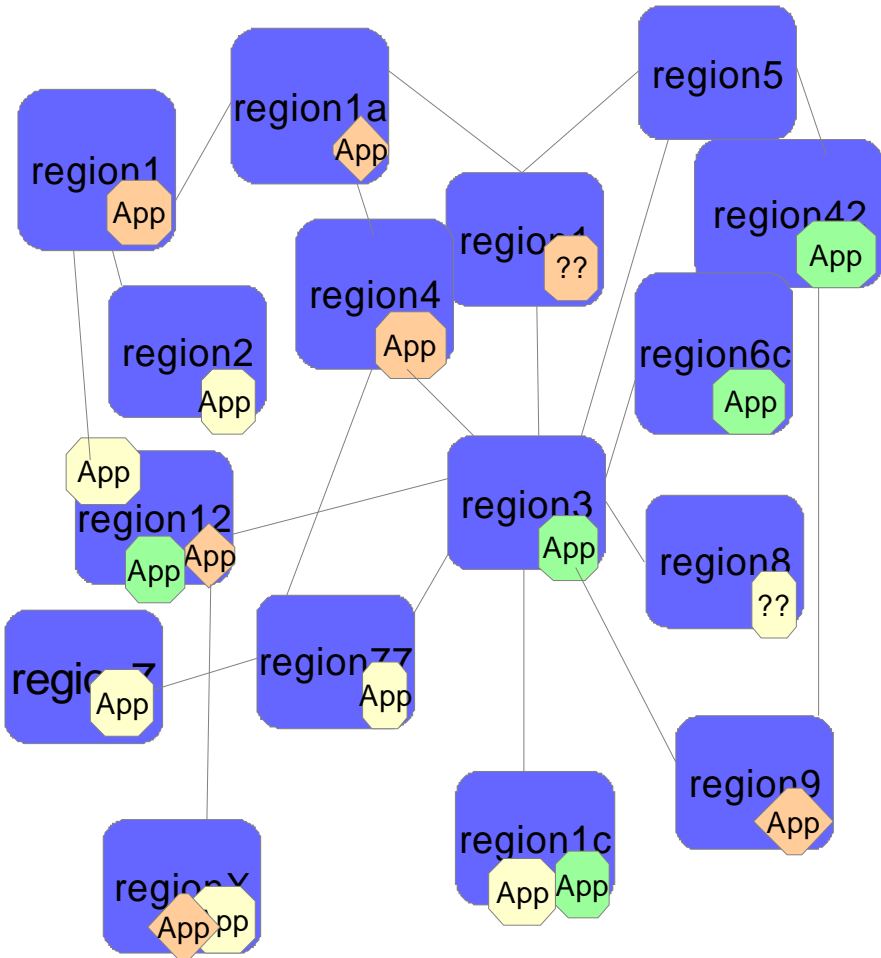
System z and z/OS

We need life to be simple again



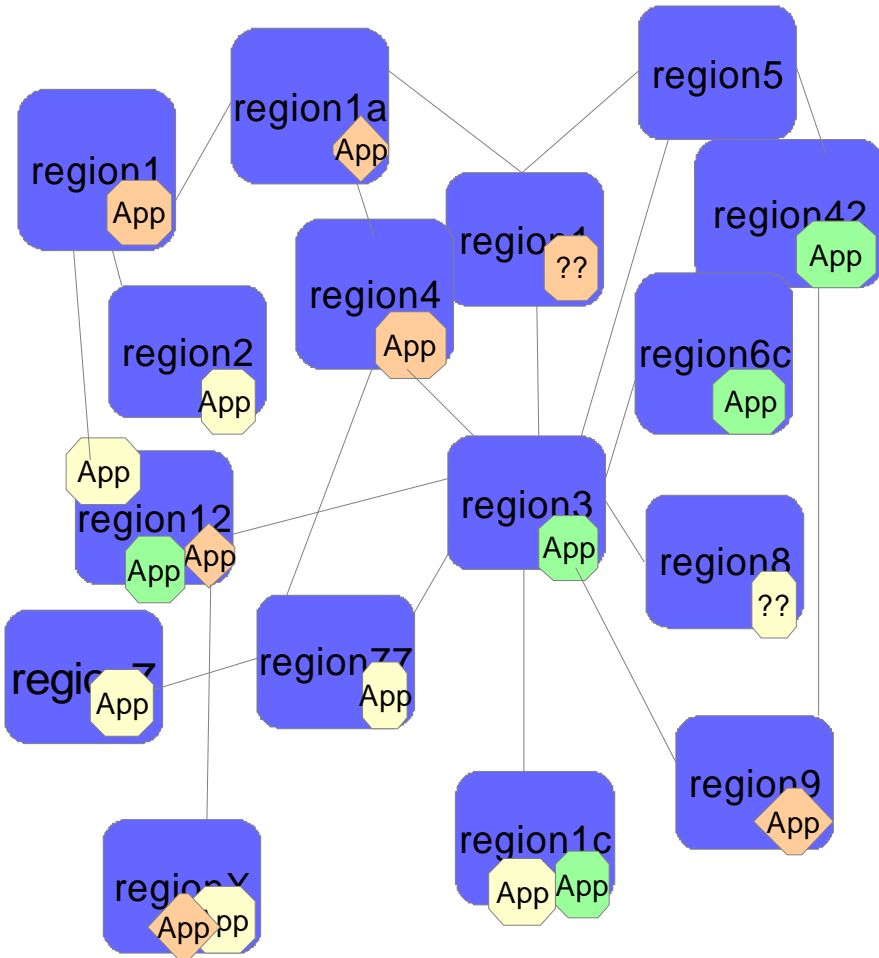
CICS before Platform as a Service

before...



CICS after Platform as a Service...

before...



... after

CICS Applications

- CoreBanking
- Transfers
- Dividends

CICS Platform

- InboundWebGateway:
 - region1, region2, region3
- CoreAOR
 - region1a, region1c, region 6c, region 5
- TransfersAOR
 - region77, region42, region7
- DataAccess
 - region1c, region6c



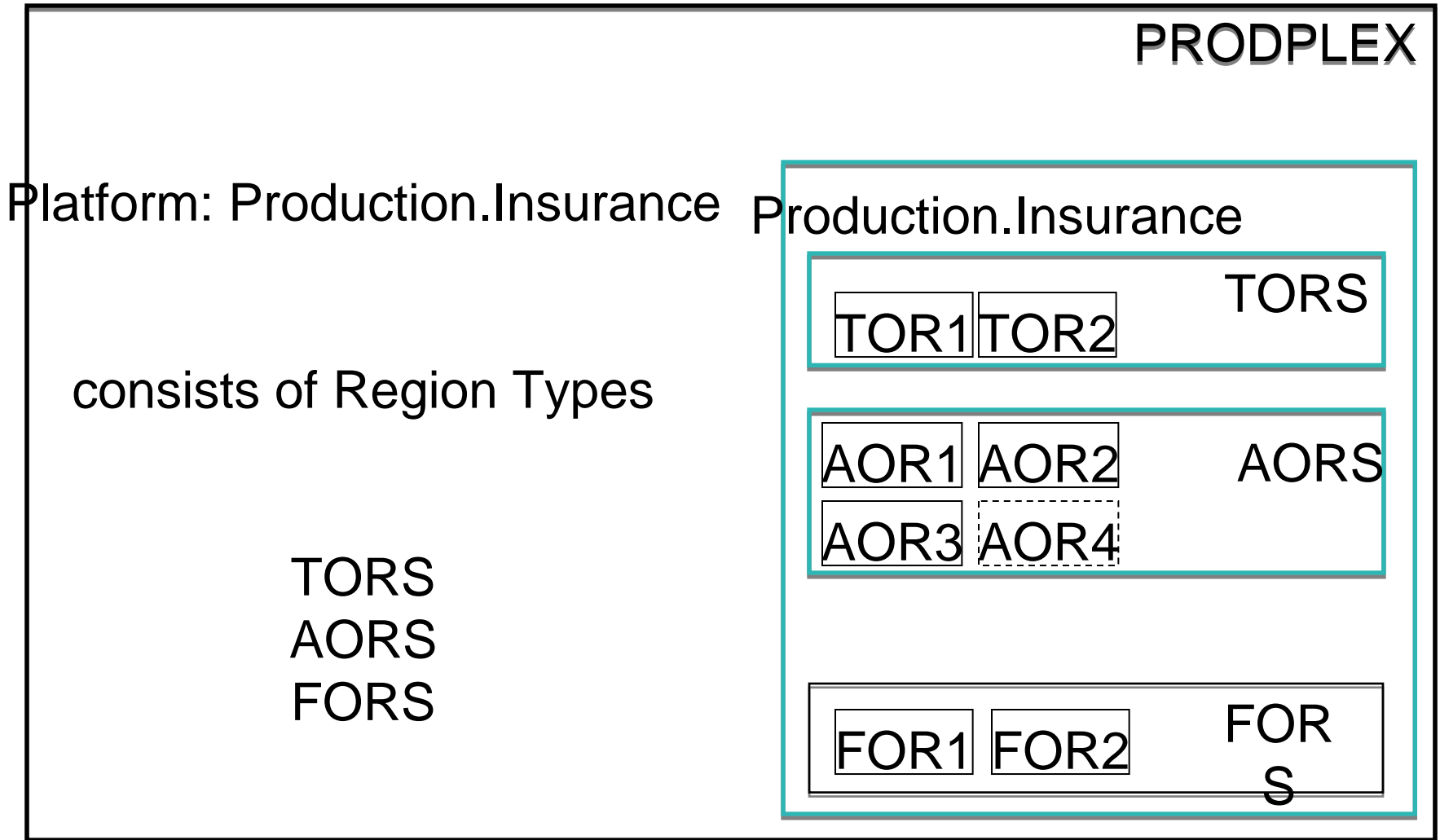
CICS Platform as a Service

- **What is a CICS Platform?**
 - A grouping of selected CICSplex SM managed regions
 - Consists of different region types
 - e.g. TOR, AOR, FOR
 - Deploy, manage and control the platform as a single entity
 - CPSM System Group (CSYSGRP) used to represent a single region type
- **What is a CICS Region Type?**
 - A grouping of like regions where an application can be deployed
 - Part of the Platform Definition



CICS Platform as a Service

- An example of a CICSplex and a Platform





What is running on your System z ? Who knows how to obtain this information?

▪ Skills

- Who knows what the current system topology looks like?
 - Who has the skills to discover the current topology?
 - Where is the knowledge?

▪ Efficiently obtaining topology information

- Reporting

▪ Time to value and Return on your investment

- Discovery

▪ Where are your investments?

- What address spaces are executing in your Sysplex?
 - What are all these address spaces?
 - What could be affecting your MLC?
- Which MVS images are my CICS assets executing within?
- What is connected to what?



CICS Deployment Assistant for z/OS

What is it?

- A tool to help provision the CICS Environment, providing discovery and visualization features that provide insight into the overall CICS Ecosystem.

What's its value?

- Topology Visualization
- Simplify tasks, save time, and reduce risk
- Automate many complex provisioning activities
- Significantly reduce the time required to validate CICS topology

How does it enhance the management of CICS?

- Discovery and Modelling of CICS systems and applications
- Deployment perspective integrates with CICS Explorer Advanced Topology Visualization
- Automated creation, deployment, customization, and control of CICS regions
- Edit files, submit JCL, view output
- Simplify tasks, save time, and reduce risk

Why is this tool important?

- Improved speed to market
- Reduced chance of failure
- Controlled, governed deployment
- Optimize hardware resources
- Plan for mergers and acquisitions
- Help with understanding applications
- Reduce ongoing life cycle costs for managing new CICS systems

CICS PROVISIONING



Why use CICS DA ?

Discovery

- **Discover your Sysplex and CICS assets**
- **Visualize the assets graphically as well as their interconnections**
 - truly understand your CICS topology
 - understand which sub-systems are running where, and how they are interconnected
- **Discovery data exporting for reporting**
 - make informed decisions involving your CICS environment
- **Web-style tagging of discovered entities**
 - Customize how you view your environment

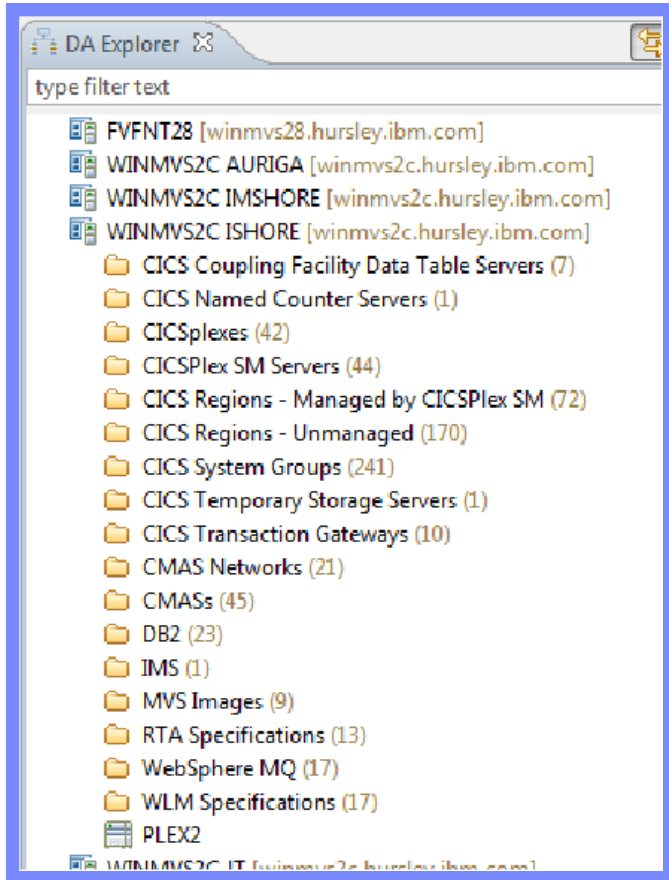
Deployment

- **Clone CICS regions**
 - automated facility for cloning regions
 - quicker and less risk than manual activity
- **Plexify an unmanaged CICS region**
 - automated facility to add regions to CICSplex SM
- **Create a CPSM environment**
 - use Models and cheat sheets
- **Create a new CICS region**
 - provides standard method for creating new regions

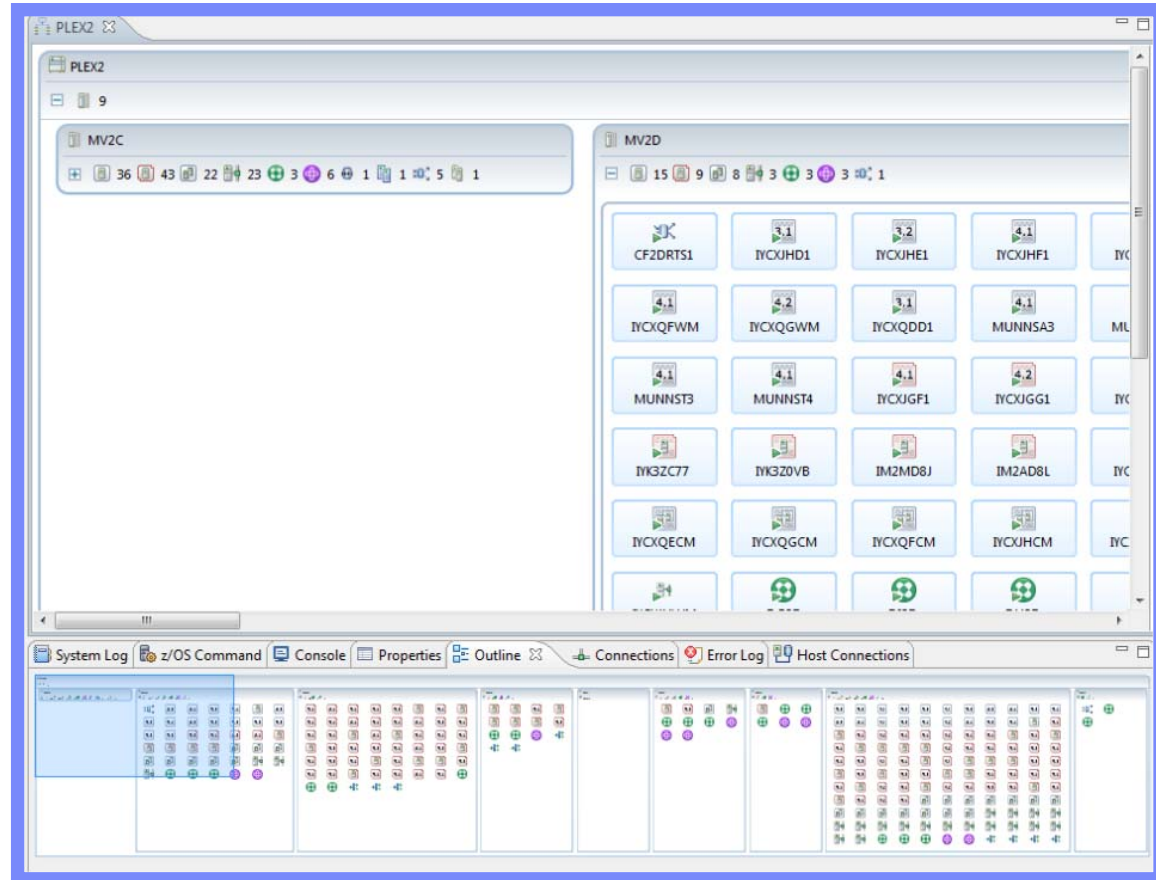
CICS Deployment Assistant V5.1...

Discovery

Tree View



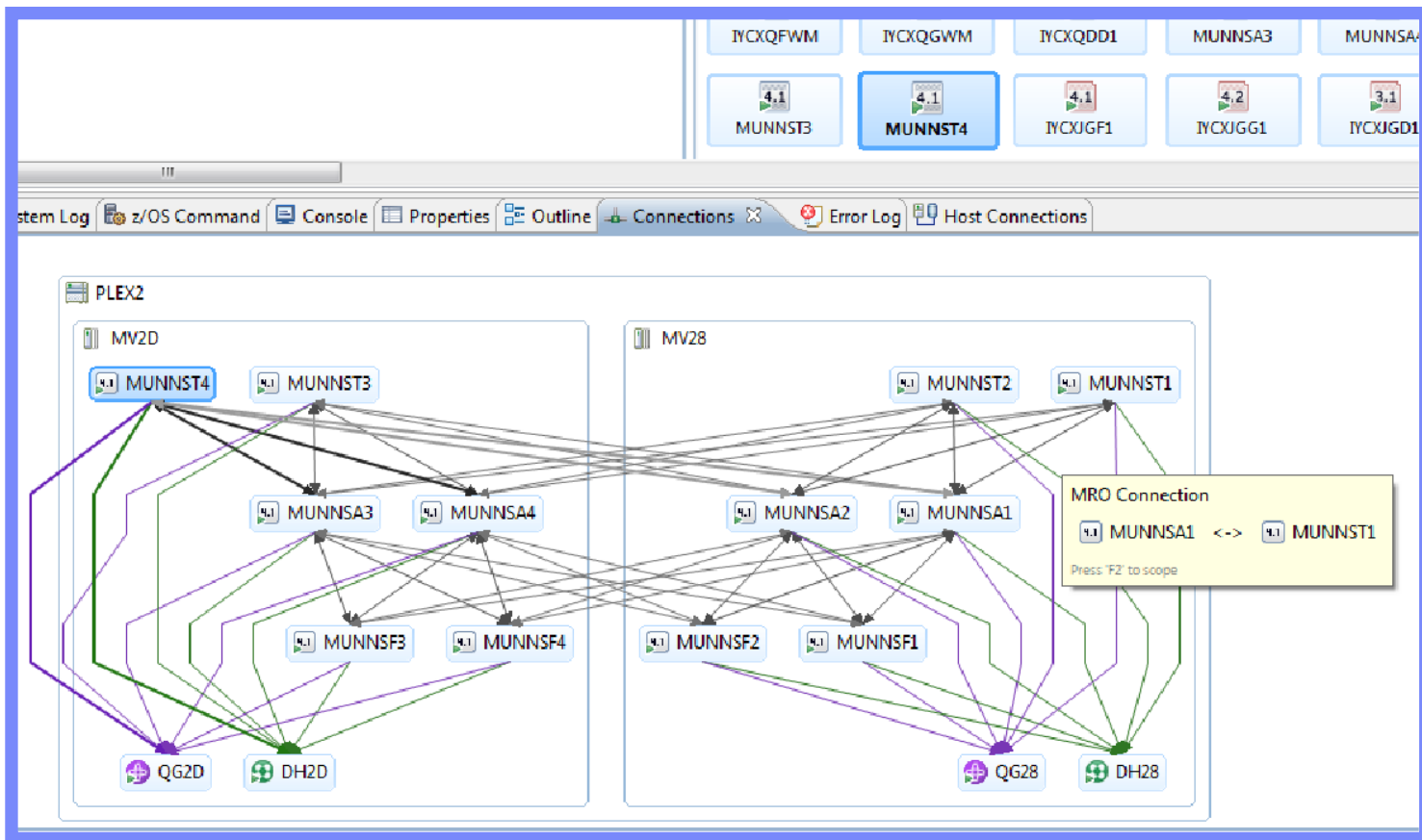
Graphical Visualisation



CICS Deployment Assistant V5.1...

Discovery

Scoped connections view





CICS Deployment Assistant V5.1

Editors and Tagging

■ Editors

- Provides base level of information about discovered entities
 - Shows
 - Start/Stop policies
 - Tags
 - Job name
 - User ID
 - Connections
 - MVS Image

■ Tagging

- Manual Web2.0 style tagging on discovered entities
 - Aids reporting and visualisation filtering

CICS Deployment Assistant V5.1...

“Managed CICS Region” Editor

ICYZC24: Region

Managed CICS Region

Tags:

Details

APPLID: IYZC24
 Job Name: CICSC132
 Program: DFHSIP
 Version: 3.2 (0650)
 z/OS System: [MV2E](#)
 CICSplex: [TOOLPLX2](#)
 MAS: CICSC132

Start and Stop policies

No start policy specified

Stop policy (default stop command)

CICSplex SM

CMAS: [IYZC27](#)
 MON Spec: .
 RTA Spec: .
 WLM Spec: [WLMSPEC1](#)

Subsystems

DB2: [DF2E](#)
 MQ: .
 IMS: .

Last known status

Status: **Running**
 User: SYSTASK
 Job ID: [STC05519](#)

System Groups

CICS Connectivity

Managed CICS Region

DA - Clone a managed region

CICSplex:
MAS:

- IYCYZC2N (CICSC351) [MV2E], [TOOLPLX5]
- IYDZEJ06 (REDFOR42) [MV2F], [REDBPLEX]
- IYDZEJ07 (REDDVA42) [MV2F], [REDDPLEX]
- IYDZEJ0A (REDDVB42) [MV2F], [REDDPLEX]
- IYDZZ418 [MV2F], [CICSIAPL]
- IYDZZ514 [MV2F], [CICSIAMM]
- IYDZZ518 [MV2F], [CICSIAPL]
- IYDZZ519 [MV2F], [CICSIAPL]

CICS Regions - Unmanaged (30)

CICS System Groups (14)

CMAS Networks (8)

CMASs (9)

DB2 (8)

IMS (1)

WebSphere.MQ (3)

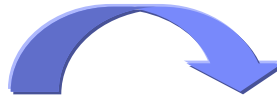
Jobs

Job Name: REDDVA42 User: *

REDDVA42 - STC06772 (CTOOLUSR)

Context Menu:

- New
- Open
- Edit tags...
- Refresh Status F5
- Delete from model Delete
- Start region
- Stop region
- Clone Region
- Dependencies
- Transaction summary
- Show SIT Parameters
- Show in CICS Explorer
- Find DB2 Resources
- Find MQ Resources



Clone a CICS Region

Clone a CICS region

It is recommended that applid and MAS name match

New APPLID: IYDZEJ09

New CICS Sysid: EJ09

New MAS Name: REDDVA43

New Description: Region cloned from REDDVA42 by CICS DA

Specify the start policy for your new CICS region.

Data Set: USER.PROCLIB

Member Name: REDDVA43

< Back Next > Finish Cancel



Clone a CICS Region

Confirm the names for the new data set members

Confirm the names for the new data set members to be created if applicable on finish

JCL Include Member Changes

Data Set Name	Old Member Name	New Member Name

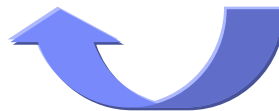
SIT Member Changes

Data Set Name	Old Member Name	New Member Name
REDTOOLS.CPSM42.SYSIN	FOREJ07	FOREJ08

EYUPARM Member Changes

Data Set Name	Old Member Name	New Member Name
REDTOOLS.CPSM42.SYSIN	MASEJ07	MASEJ08

< Back Next > Finish Cancel



Clone a CICS Region

Confirm the values for the new data sets

Confirm values for the new data sets which will be created on finish

Data sets

DD Name	Share	Existing Data set	New Data set
DFHAUXT	<input type="checkbox"/>	REDTOOLS.REDDVA42.DFHAUXT	REDTOOLS.REDDVA43.DFHAUXT
DFHBUXT	<input type="checkbox"/>	REDTOOLS.REDDVA42.DFHBUXT	REDTOOLS.REDDVA43.DFHBUXT
DFHCMACD	<input checked="" type="checkbox"/>	REDTOOLS.REDDVA42.DFHCMACD	REDTOOLS.REDDVA43.DFHCMACD
DFHDMPA	<input type="checkbox"/>	REDTOOLS.REDDVA42.DFHDMPA	REDTOOLS.REDDVA43.DFHDMPA
DFHDMPB	<input type="checkbox"/>	REDTOOLS.REDDVA42.DFHDMPB	REDTOOLS.REDDVA43.DFHDMPB
DFHGCD	<input type="checkbox"/>	REDTOOLS.REDDVA42.DFHGCD	REDTOOLS.REDDVA43.DFHGCD
DFHINTRA	<input type="checkbox"/>	REDTOOLS.REDDVA42.DFHINTRA	REDTOOLS.REDDVA43.DFHINTRA
DFHLCD	<input type="checkbox"/>	REDTOOLS.REDDVA42.DFHLCD	REDTOOLS.REDDVA43.DFHLCD
DFHLRQ	<input type="checkbox"/>	REDTOOLS.REDDVA42.DFHLRQ	REDTOOLS.REDDVA43.DFHLRQ
DFHTEMP	<input type="checkbox"/>	REDTOOLS.REDDVA42.DFHTEMP	REDTOOLS.REDDVA43.DFHTEMP

Job name: REDDVA43

< Back Next > Finish Cancel

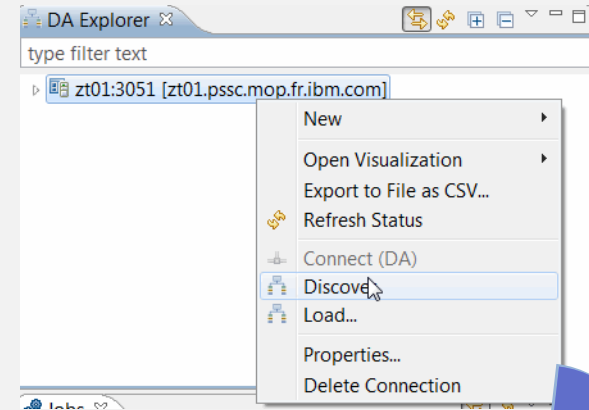


DA - Plexify your unmanaged regions

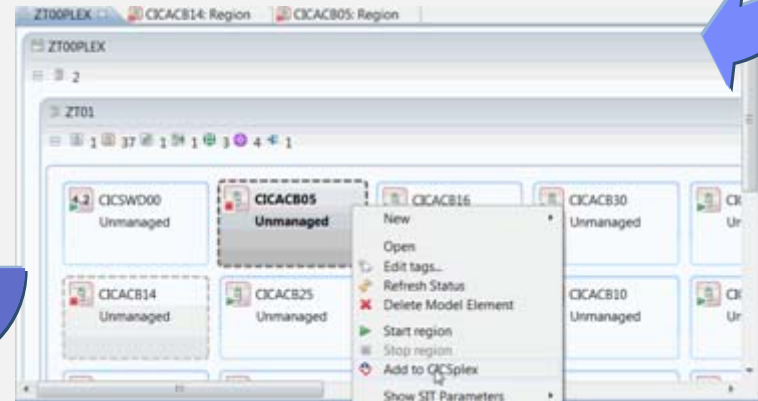
Benefits

- 3 steps to a managed region
- Manage your region from the CICS SM Explorer perspective

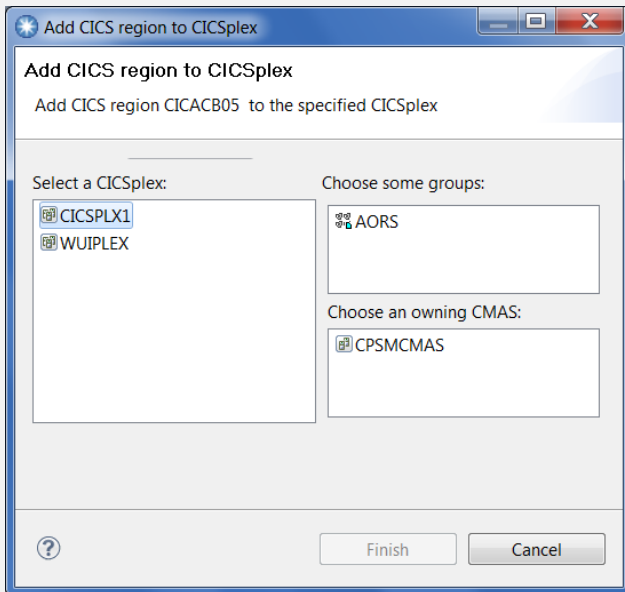
Discover



Visualize
Unmanaged regions

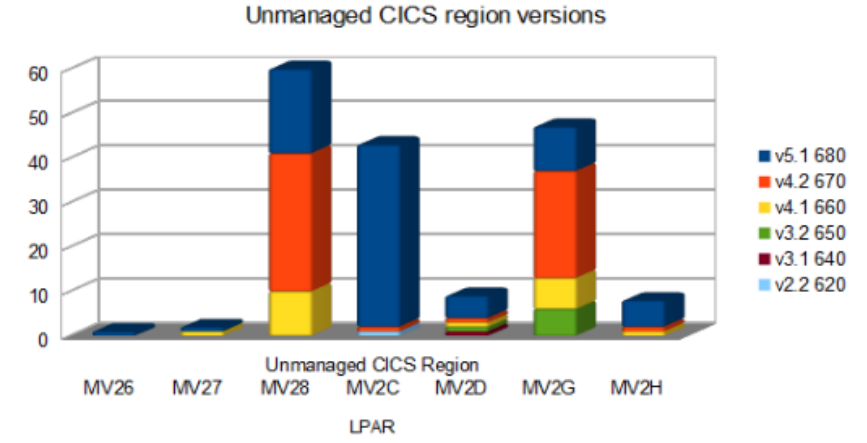
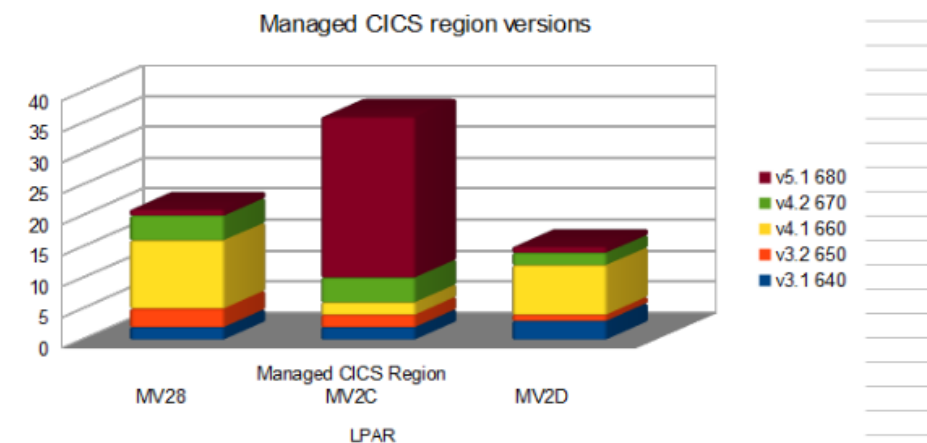
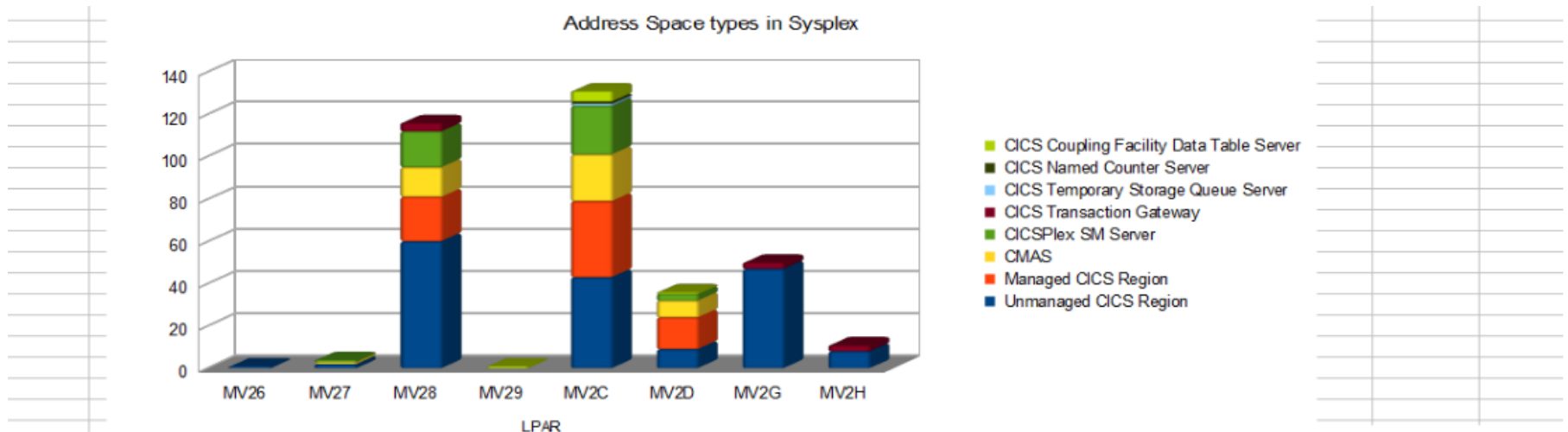


Manage



CICS Deployment Assistant v5.1

Reporting from the DA model





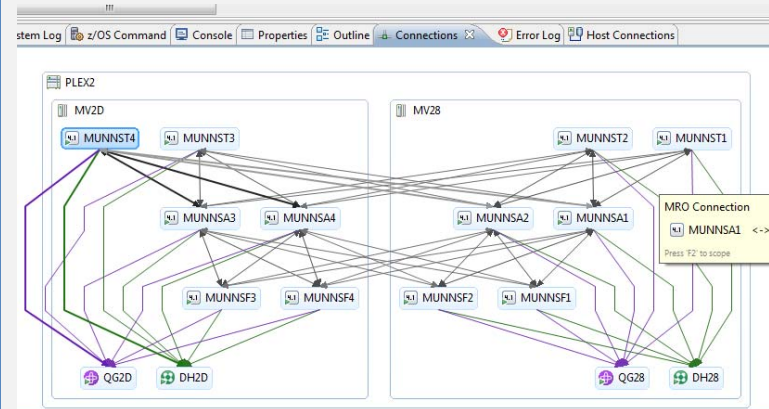
CICS Deployment Assistant for z/OS V5.1

What's new in CICS DA V5.1...

- Enriched discovery of over 30 entities
- Improved visualization with tagging and filtering
 - Connections view with scoping
 - Export model for external reporting
 - CICS TS V5.1 upgrade cheat sheet
- Tagging and filtering of model elements
 - New navigators
 - Clone JCL improvements
 - IPv6 support
 - Virtual IP addressing support
 - Serviceability enhancements

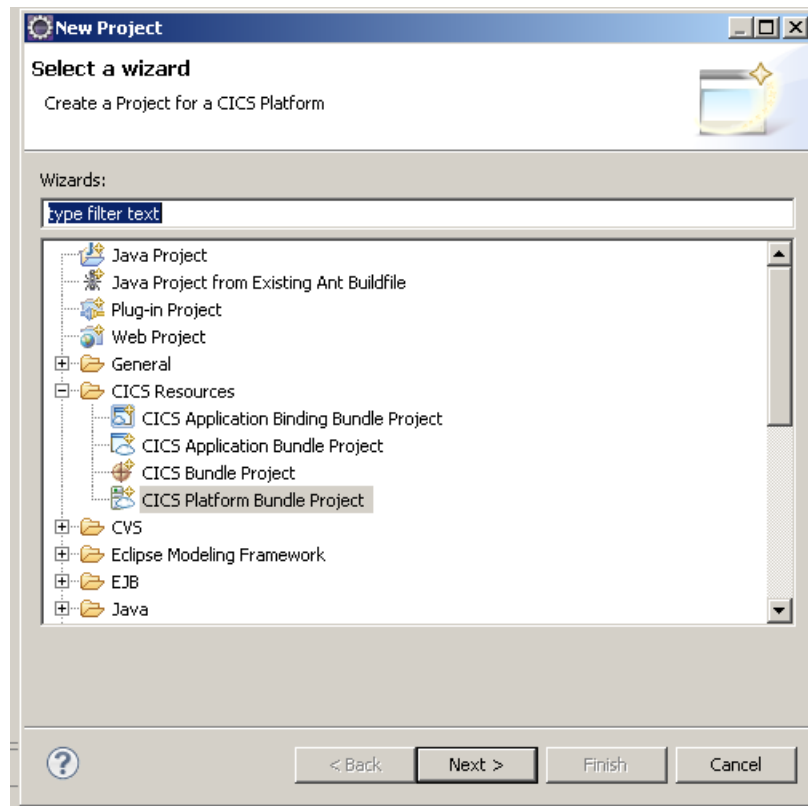
CICS DA enables you to...

- Visualize and manage your CICS topology
- Discover existing regions and sus-systems
 - Automation creates new CICSplex
 - Plexify and clone CICS regions
 - Start and stop a CICS region



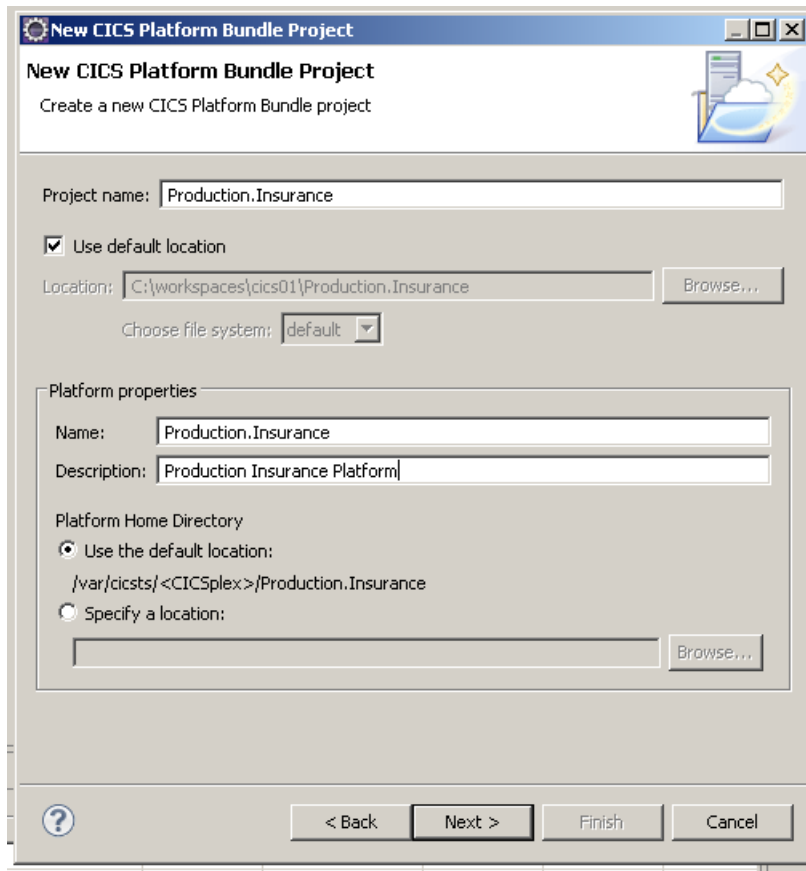
Define the Platform

- Create a new Platform Project



Define the Platform...

- Name the Platform Bundle Project



New CICS Platform Bundle Project
Create a new CICS Platform Bundle project

Project name:

Use default location

Location:

Choose file system:

Platform properties

Name:

Description:

Platform Home Directory

Use the default location:
/var/cicsts/<CICSplex>/Production.Insurance

Specify a location:

Define the Platform...

- Specify the Platform Home Directory

The screenshot shows the 'New CICS Platform Bundle Project' wizard dialog box. The title bar reads 'New CICS Platform Bundle Project'. The main heading is 'New CICS Platform Bundle Project' with the subtitle 'Create a new CICS Platform Bundle project'. The dialog is divided into several sections:

- Project name:** A text field containing 'Production.Insurance'.
- Use default location:** A checked checkbox.
- Location:** A text field containing 'C:\workspaces\cics01\Production.Insurance' and a 'Browse...' button.
- Choose file system:** A dropdown menu set to 'default'.
- Platform properties:**
 - Name:** A text field containing 'Production.Insurance'.
 - Description:** A text field containing 'Production Insurance Platform'.
 - Platform Home Directory:**
 - Use the default location:
`/var/cicsts/<CICSplex>/Production.Insurance`
 - Specify a location:
A text field containing '/u/wspot33/cicslab/' and a 'Browse...' button.

At the bottom of the dialog, there are four buttons: a help icon (?), '< Back', 'Next >', 'Finish', and 'Cancel'.

Define the Platform...

- Specify the Region Types included in this Platform

New CICS Platform Bundle Project
CICS Platform Bundle Project
Specify the Region Types for this Platform Bundle.

Name	ID
Insurance_TORs	TORS

Add a Region Type
Create a region type for the Platform.

Name: Insurance_AORs

CICS system group to use as the Region Type ID:

CICS SM connection: zGUI

CICSplex: WSPOT

CICS system group: AORS

Buttons: Add..., Remove, Properties..., OK, Cancel

...

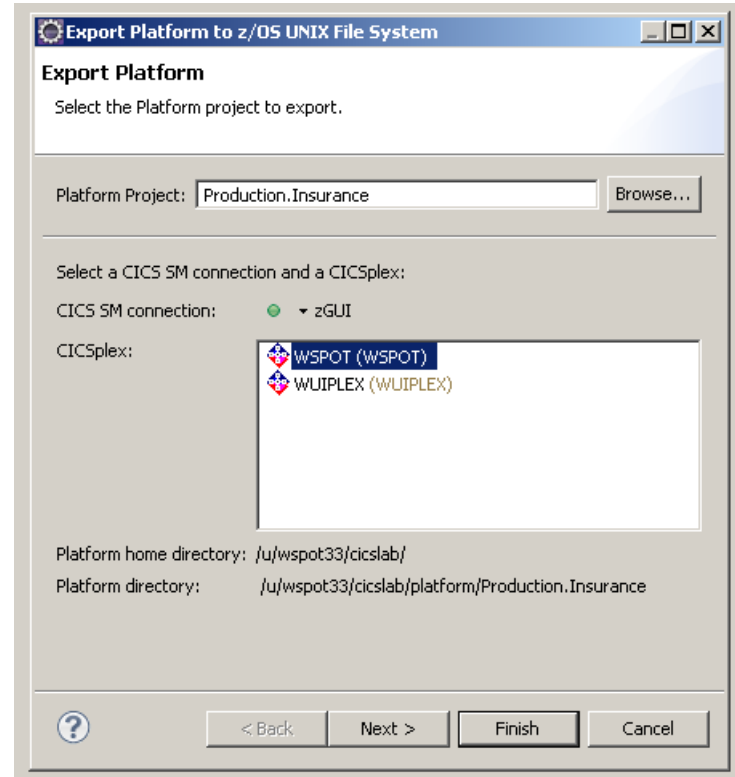
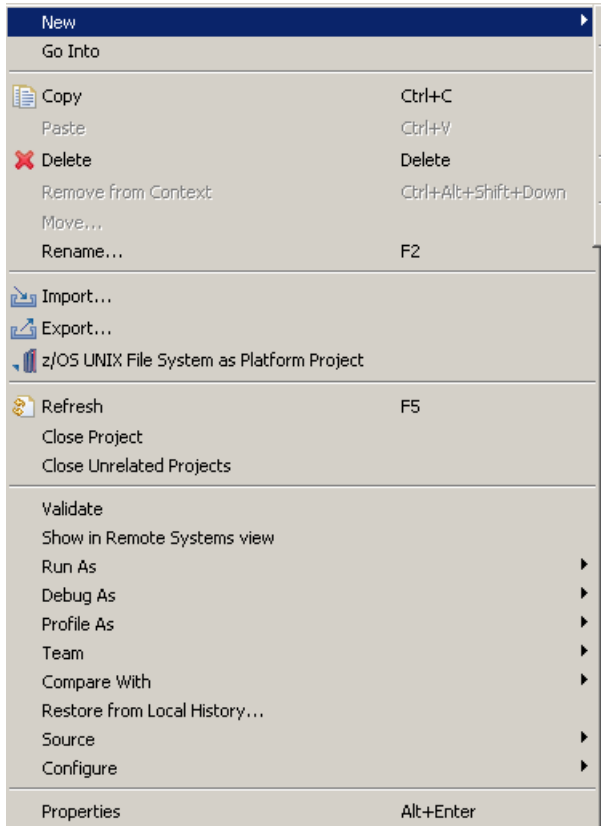
New CICS Platform Bundle Project
CICS Platform Bundle Project
Specify the Region Types for this Platform Bundle.

Name	ID
Insurance_TORs	TORS
Insurance_AORs	AORS
Insurance_FOR	FOR

Buttons: Add..., Remove, Properties..., < Back, Next >, Finish, Cancel

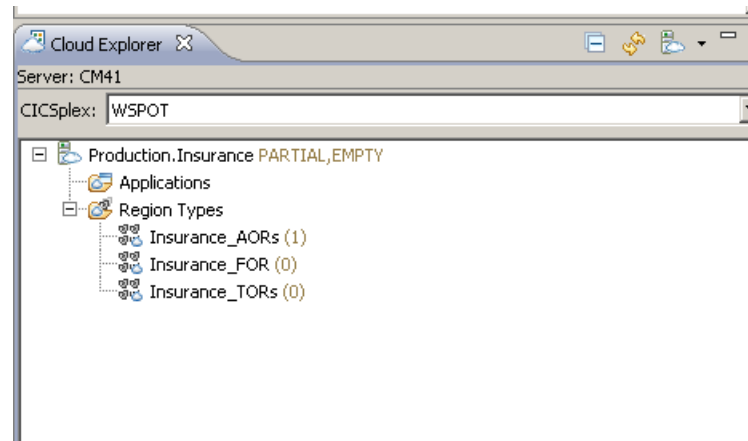
Define the Platform...

- Export the Platform Project to zFS



Define the Platform...

- View the Platform in the Cloud Explorer





Summary

- **The challenge of multiple CICS regions**
 - Life started out simple and became more complex

- **Cloud Computing**
 - Private clouds
 - Platform as a Service
 - Software as a Service

- **CICS Platforms and Deployment Assistant**
 - Life is becoming simple again

A decorative graphic in the top-left corner consisting of several 3D cubes in various colors (red, pink, orange, black) arranged in a cluster.

CICS Resources

Find out more

Register for Impact 2013 today

-30 CICS related sessions

- 2 Labs

-Meet CICS Technical specialists

-Hear about the latest CICS V5.1 Portfolio release

-<http://www-01.ibm.com/software/websphere/events/impact/registration.html>



CICS Smart Seminars

Arrange a customized CICS agenda at your location and hear about the CICS topics you want to hear about. Contact your local IBM representative or send an

Email to cicssem@uk.ibm.com or Fred Marschner marschne@us.ibm.com



CICS Developer Trial

CICS Developer Trial V5.1

Operational Efficiency and Service Agility with Cloud Enablement



- Available from Jan 11th 2013
- No charge trial, fixed expiry date
- Does not start SVC period
- For non-production environments
- Available through IBM ShopzSeries
- **PID 5655-CIC**

Based on CICS TS V5.1

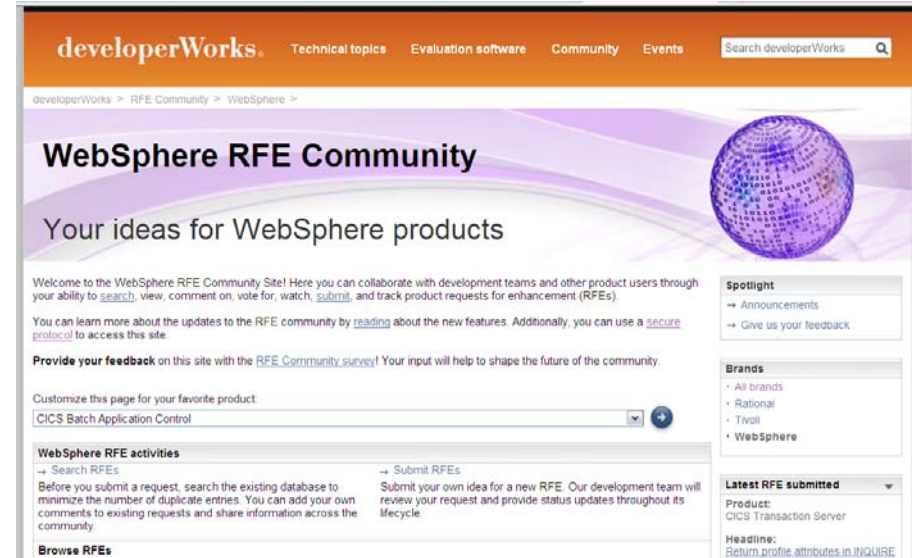
- (with restrictions)

- Performance
- Capacity
- License

<https://www.ibm.com/developerworks/connect/cicsdev>

Raising new requirements with RFE

- You can now raise and track requirements using the new IBM RFE system for
 - CICS Transaction Server
 - CICS Explorer
 - TXSeries
 - WXTR
 - IBM CICS Tools
 - CICS Transaction Gateway
 - PD Tools - coming soon (target end Jan 2012)
- All previous FITS requirements have been processed, and either be transferred to RFE or closed and returned
- All brands <https://www.ibm.com/developerworks/rfe/> - select Brand: WebSphere
- WebSphere only https://www.ibm.com/developerworks/rfe/?BRAND_ID=181
- Select Product Family: Transaction Processing - for CICS Transaction Server, TXSeries, and WXTR
- Select Product Family: Enterprise Tooling - for the CICS Tools, CICS Transaction Gateway, and PD Tools
- Raise CICS Explorer base requirements against the Explorer component of CICS TS.
- Raise plug-in requirements against the Explorer component of related product.





Google us or check us out at:



ibm/developerworks/cicsdev



facebook.com/IBMCICS



twitter.com/IBM_CICS



youtube.com/cicsfluff



youtube.com/cicsexplorer



twitter.com/IBM_System_z



CICS Explorer Forum

ibm.com/developerworks/forums/forum.jspa?forumID=1475&start=0



CICS-L list Forum

listserv.uga.edu/archives/cics-l.html

Key documents

▪ Analyst papers

- Lustratus Research - New project platform section for CICS Users
ftp://public.dhe.ibm.com/software/htp/cics/pdf/Lustratus_Research_Paper_New_project_platform_selection_for_CICS_users.pdf
- Branham Group: IBM CICS Tools: Unrealized Productivity Gains and True Cost Savings
ftp://public.dhe.ibm.com/software/htp/cics/tools/IBM_CICS_Tools_Whitepaper_2009.pdf
- Software Strategies: IBM z/OS Problem Determination Tool Suite Leads Again
https://www14.software.ibm.com/webapp/iwm/web/preLogin.do?lang=en_US&source=swg-rszswg

▪ IBM Redbooks

- [CICS Transaction Server from Start to Finish](#), SG24-7952-00
- [Smarter Banking with CICS Transaction Server](#), SG24-7815-00
- [Implementing Event Processing with CICS](#), SG24-7792
- [CICS and SOA: Architecture and Integration](#), SG24-5466-06
- [Implementation of Popular Business Solutions with CICS Tools](#), REDP-4824-00
- [Threadsafe considerations for CICS](#), SG24-6351-04
- [Architects guide to CICS on System z](#), SG24-8067-00
- [CICS Transaction Server Application Architecture](#), Redbooks solution guide



Next Session

CICS V5.1 *Applications*

- **Application Packaging**
 - Bundles
 - Application Projects

- **Application Deployment**
 - Bindings
 - Appdef

- **Modernization and the Liberty web container**

