

# Using advance source control: Improve enterprise development productivity and collaboration

Rosalind Radcliffe, Distinguished Engineer

Chief Architect for DevOps and CLM

[rradclif@us.ibm.com](mailto:rradclif@us.ibm.com)

@RosalindRad



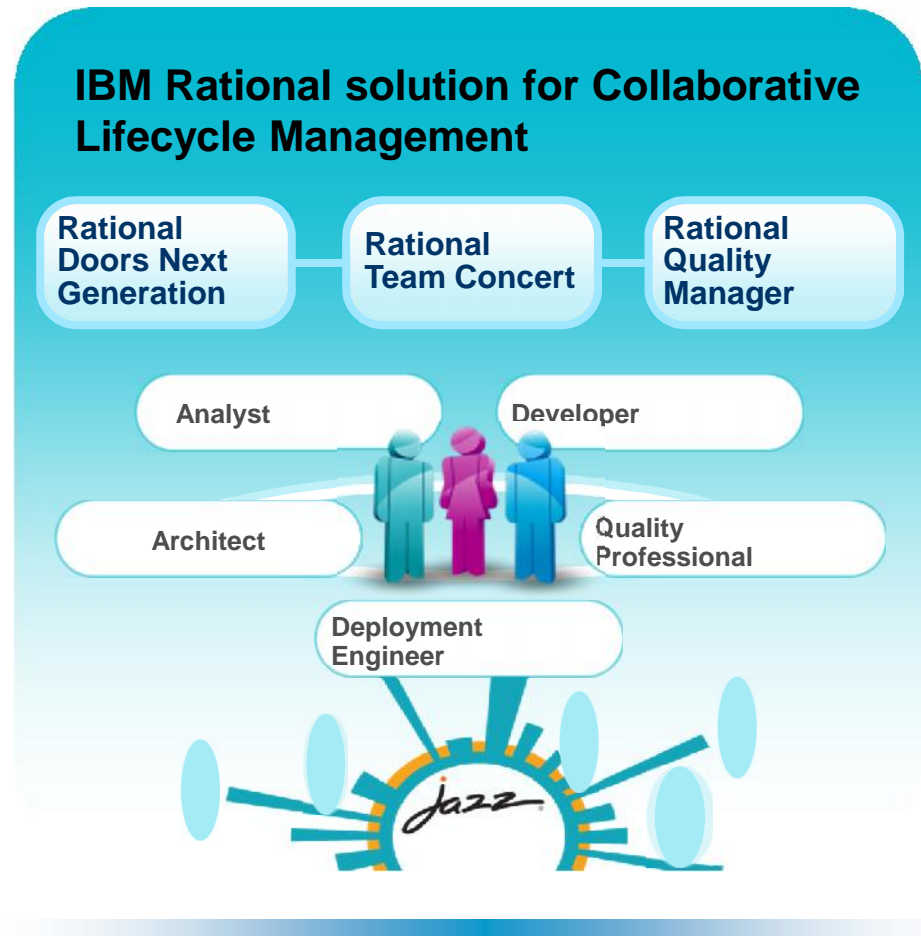
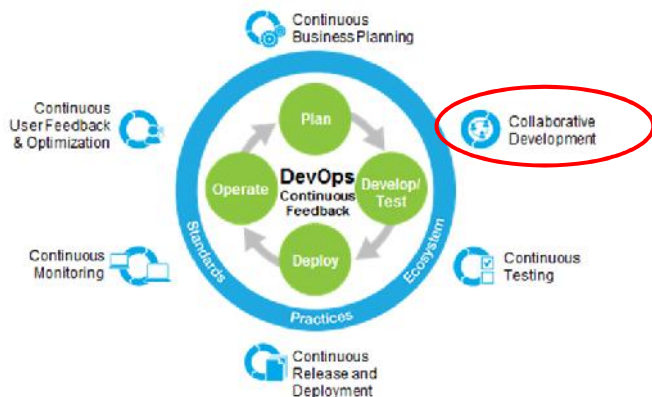
# Topics to be covered

- Discover how to enhance team collaboration and speed time to market
- Learn how to gain high visibility into project activities and team progress
- Find out how consistent processes can help improve software quality
- What's new with CLM 6.0

# IBM Rational solution for Collaborative Lifecycle Management supports DevOps in the enterprise

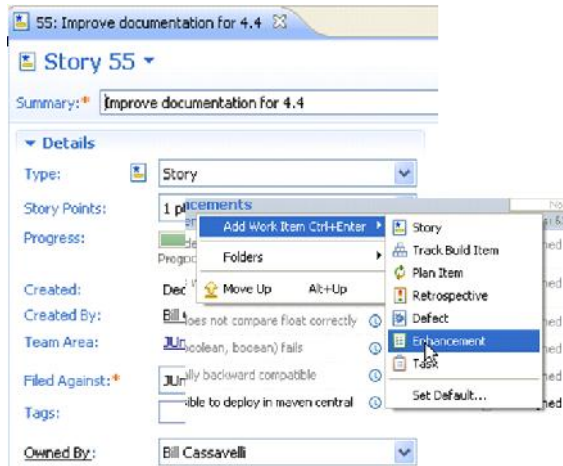
*Improve productivity with an integrated ALM solution*

- **Optimize your team through support of the 5 ALM Imperatives**
  - Real-time planning
  - Lifecycle traceability
  - In-context collaboration
  - Development Intelligence
  - Continuous Improvement
- **Get up and running quickly**
- **Extend as your needs evolve**
- **Support heterogeneous development across multiple platforms and technologies**

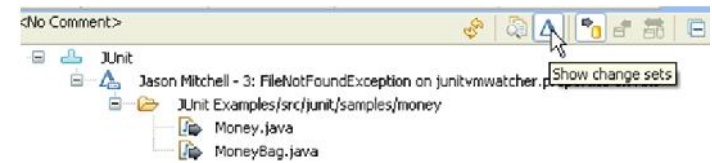
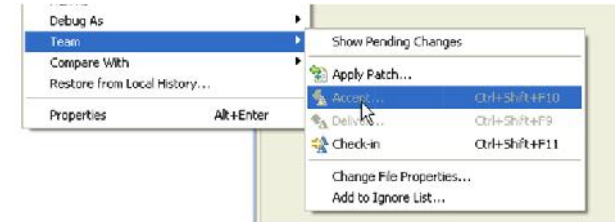
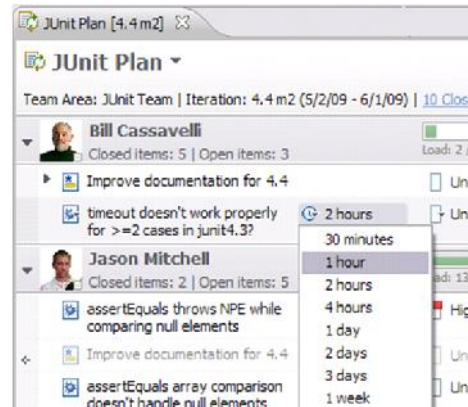


# Rational Team Concert – A single tool, many uses

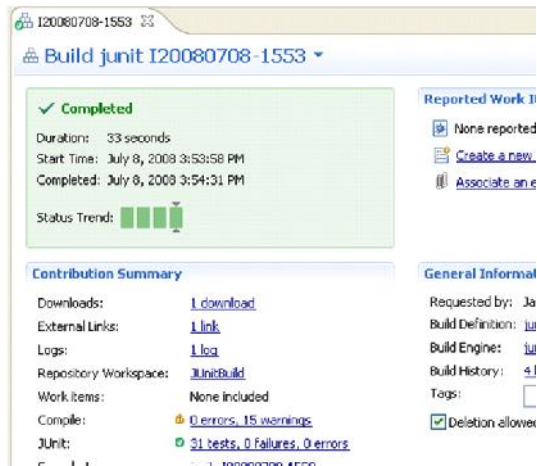
## Work Items



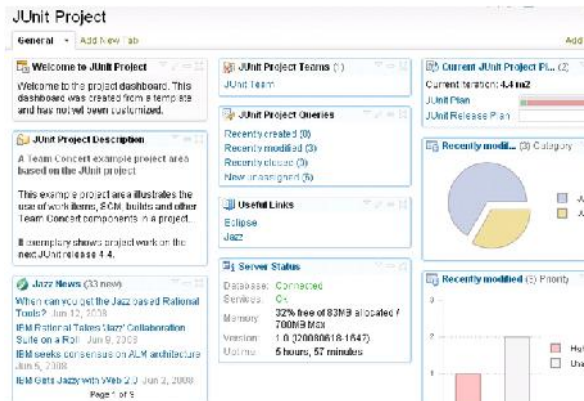
## Planning



## Builds – Continuous



## Dashboards &



## Method Enforcement and Automation

**Problem**  
A work item must be associated with the change set or a comment must be set.

**Reason**  
All change sets should be associated with a work item which is planned for the

This makes it easier to track why your change set was **Deliver (failed)** with the error: **Missing work item or comment**

- Solutions**
- Associate Existing Work Item
  - Associate New Work Item
  - Associate and Try Again (experimental)
  - Override 'Descriptive Change Sets' Precondition

# Demo



## What's new with RTC 6.0 – for the z customers

Lots of new capabilities to make your life easier

- new component history, change history and history views, change history view
- new search command - now you can look for a string on the project with the search in native ISPF
- Couldn't share before – now you can share the new members with other developers
- Added repository compare – so you can compare local files and what's in your sandbox with what is in the repository
- z use dependency based build – Identifies the dependencies in the application – so then only those need to be rebuilt – “only build what is needed”
- Improved management of build and promotion.
- Easier to use
- For embedded software customers who are heavily regulated – interested in version control, security and traceability. Added authentication to RTC version identifiers
- Upgraded integration with UC – RTC for z customers – includes basic deployment – now it can generate deployment packages for UC

# RTC Packaging for UrbanCode Deploy

- RTC can now package build results (e.g. for work items) into Urban Code Deploy component versions to be deployed.

Package Definition

ID: UCDPKG.zMortgageint Project or Team Area: babtest

z/OS ISPF gateway script\*

Delete obsolete work item outputs

UrbanCode packaging options

Specify properties to create package or manifest for UrbanCode Deploy

UrbanCode Deploy package type  Generate UrbanCode Deploy package

UrbanCode Deploy Toolkit script: /var/testsn1/ucd511/agent/bin/buztool.sh

UrbanCode Deploy component name: BabTestComp2

UrbanCode Deploy version naming convention:  Timestamp  First work item number  Prompt on request

(Optional) Prefix for UrbanCode version name: prefix3.

Create Package

Work Item Summary

Review this summary of the work items, their children, and the outputs that are packaged.

You have selected the following work items and outputs for packaging:

- 17-fix EPSCSMRD and EPSMPMT
  - BABIND.DEV60.TST2.LOAD(EPSCSMRD)
  - BABIND.DEV60.TST2.LOAD(EPSMPMT)
- 7-fix bug A
  - BABIND.DEV60.TST2.DBRM(EPSCMORT)
  - BABIND.DEV60.TST2.LOAD(EPSCMORT)

IBM UrbanCode Deploy

galibier.rtp.raleigh.ibm.com:8080/#version/80626b53-3f81-485b-8cce-98c5042d6ed4

Artifacts

Total: 4 members in 2 data sets

Name	Deploy Type	Last Modified	Properties
▼ BABIND.DEV60.TST2.DBRM			
EPSCMORT	DBRM	3/16/2015, 11:42 PM	
▼ BABIND.DEV60.TST2.LOAD			
EPSCMORT	LOAD	3/16/2015, 11:42 PM	
EPSCSMRD	CICS	3/19/2015, 2:52 PM	
EPSMPMT	LOAD	3/19/2015, 2:52 PM	

[Refresh](#) [Print](#)

# Build outputs can be set to deploy types...

- Your language definition's translators can specify deployment types on the outputs they generate during a build...

The screenshot shows the 'Translators' section in the IBM z Systems interface. The 'BAB\_COBOL compilation (CICS&DB2)' translator is selected. The 'DD allocations' table is displayed, showing various data set definitions and their properties. The 'DBRM' entry is highlighted with a red box, indicating its deployment type.

DD Name	Data Set Definition	Memb...	O..	C...	Keep	Mod	Out...	Deployment Type	Publ...
SYSIN	<INPUT>	no			no	no	no		no
SYSLIN	BAB_Temporary f...	no			yes	no	no		no
DBRMLIB	BAB_DBRM library	yes	S...		no	no	yes	DBRM	no
SYSPRINT	BAB_Temporary f...	no			no	no	no		yes
SYSUT1	BAB_Temporary f...	no			no	no	no		no
SYSUT2	BAB_Temporary f...	no			no	no	no		no
SYSUT3	B&R Temporary f...	no			no	no	no		no

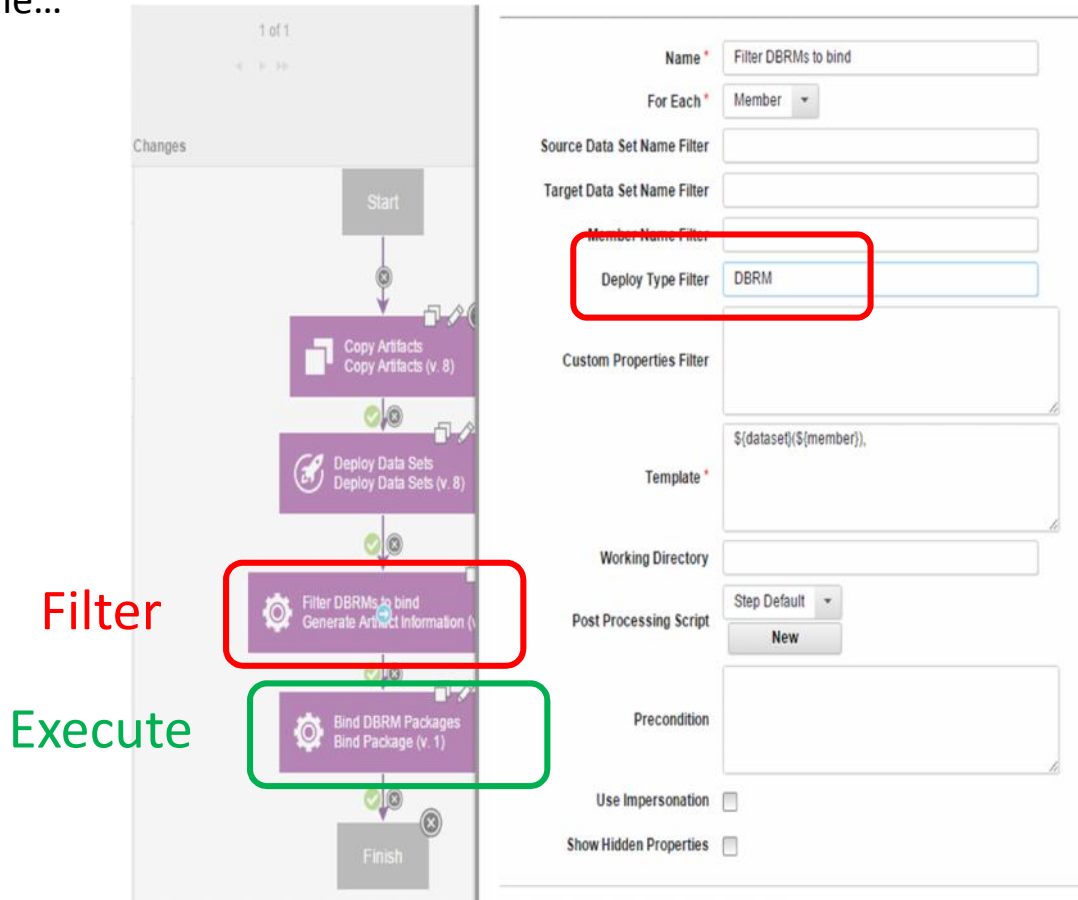
Below the table, there is a 'Variables' section with a table for defining variables and values used by this translator.

Name	Value



# ...and deployTypes can direct UCD actions

- And UrbanCode Deploy processes can use these deploy types to determine and execute special actions at deploy time...



# QUESTIONS

[Jazz.net](https://www.ibm.com/jazz)

[IBM DevOps](https://www.ibm.com/devops)

[IBM DevOps for Enterprise Systems](https://www.ibm.com/devops/enterprise)

[Improve Application Development with best practices for DevOps  
on IBM System z](https://www.ibm.com/devops/enterprise)



# Trademarks

The following are trademarks of the International Business Machines Corporation in the United States and/or other countries.

\* Registered trademarks of IBM Corporation

**The following are trademarks or registered trademarks of other companies.**

IBM, the IBM logo, ibm.com, Bluemix, Blueworks Live, CICS, Clearcase, DOORS®, Enterprise Document Management System™, Global Business Services®, Global Technology Services®, Information on Demand, ILOG, Maximo®, MQIntegrator®, MQSeries®, Netcool®, OMEGAMON, OpenPower, PureAnalytics™, PureApplication®, pureCluster™, PureCoverage®, PureData®, PureExperience®, PureFlex®, pureQuery®, pureScale®, PureSystems®, QRadar®, Rational®, Rhapsody®, SoDA, SPSS, StoredIQ, Tivoli®, Trusteer®, urban{code}®, Watson, WebSphere®, Worklight®, X-Force® and System z® Z/OS, are trademarks of International Business Machines Corporation, registered in many jurisdictions worldwide. Other product and service names might be trademarks of IBM or other companies. A current list of IBM trademarks is available on the Web at "Copyright and trademark information" at: [www.ibm.com/legal/copytrade.shtml](http://www.ibm.com/legal/copytrade.shtml).

\* Other product and service names might be trademarks of IBM or other companies.

#### Notes:

Performance is in Internal Throughput Rate (ITR) ratio based on measurements and projections using standard IBM benchmarks in a controlled environment. The actual throughput that any user will experience will vary depending upon considerations such as the amount of multiprogramming in the user's job stream, the I/O configuration, the storage configuration, and the workload processed. Therefore, no assurance can be given that an individual user will achieve throughput improvements equivalent to the performance ratios stated here.

IBM hardware products are manufactured from new parts, or new and serviceable used parts. Regardless, our warranty terms apply.

All customer examples cited or described in this presentation are presented as illustrations of the manner in which some customers have used IBM products and the results they may have achieved. Actual environmental costs and performance characteristics will vary depending on individual customer configurations and conditions.

This publication was produced in the United States. IBM may not offer the products, services or features discussed in this document in other countries, and the information may be subject to change without notice. Consult your local IBM business contact for information on the product or services available in your area.

All statements regarding IBM's future direction and intent are subject to change or withdrawal without notice, and represent goals and objectives only.

Information about non-IBM products is obtained from the manufacturers of those products or their published announcements. IBM has not tested those products and cannot confirm the performance, compatibility, or any other claims related to non-IBM products. Questions on the capabilities of non-IBM products should be addressed to the suppliers of those products.

Prices subject to change without notice. Contact your IBM representative or Business Partner for the most current pricing in your geography.

This information provides only general descriptions of the types and portions of workloads that are eligible for execution on Specialty Engines (e.g. zIIPs, zAAPs, and IFLs) ("SEs"). IBM authorizes customers to use IBM SE only to execute the processing of Eligible Workloads of specific Programs expressly authorized by IBM as specified in the "Authorized Use Table for IBM Machines" provided at [www.ibm.com/systems/support/machine\\_warranties/machine\\_code/aut.html](http://www.ibm.com/systems/support/machine_warranties/machine_code/aut.html) ("AUT"). No other workload processing is authorized for execution on an SE. IBM offers SE at a lower price than General Processors/Central Processors because customers are authorized to use SEs only to process certain types and/or amounts of workloads as specified by IBM in the AUT.





© Copyright IBM Corporation 2015. All rights reserved. The information contained in these materials is provided for informational purposes only, and is provided AS IS without warranty of any kind, express or implied. IBM shall not be responsible for any damages arising out of the use of, or otherwise related to, these materials. Nothing contained in these materials is intended to, nor shall have the effect of, creating any warranties or representations from IBM or its suppliers or licensors, or altering the terms and conditions of the applicable license agreement governing the use of IBM software. References in these materials to IBM products, programs, or services do not imply that they will be available in all countries in which IBM operates. Product release dates and/or capabilities referenced in these materials may change at any time at IBM's sole discretion based on market opportunities or other factors, and are not intended to be a commitment to future product or feature availability in any way. IBM, the IBM logo, Rational, the Rational logo, Telelogic, the Telelogic logo, and other IBM products and services are trademarks of the International Business Machines Corporation, in the United States, other countries or both. Other company, product, or service names may be trademarks or service marks of others.

