



Enterprise Content Management

Enterprise Content Management on System z - Extending the Value of the System z

Mike Zimmer

Worldwide ECM on System z Program Manager

IBM Corporation

mzimmer@us.ibm.com

July 29, 2008



Disclaimer

The information contained in this documentation is provided for informational purposes only. While efforts were made to verify the completeness and accuracy of the information provided, it is provided “as is” without warranty of any kind, express or implied. IBM shall not be responsible for any damages arising out of the use of, or otherwise related to, this documentation or any other documentation. Nothing contained in this documentation is intended to, nor shall have the effect of, creating any warranties or representations from IBM (or its suppliers or licensors), or altering the terms and conditions of the applicable license agreement governing the use of IBM software.



Agenda

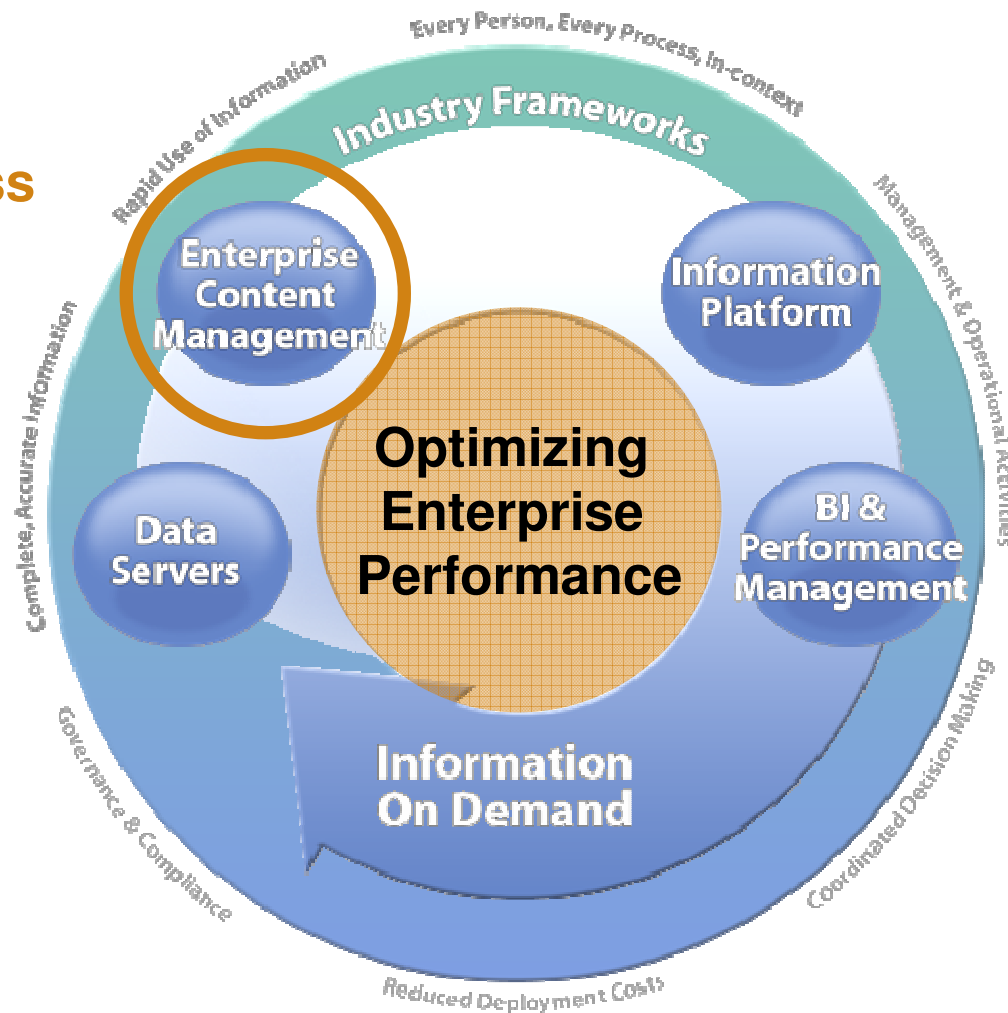
- **What is ECM?**
- **Solution Offerings for System z™**
- **Extending Your System z Infrastructure to Reduce Complexity and Lower TCO**



Information On Demand Unlocks the Business Value of Information

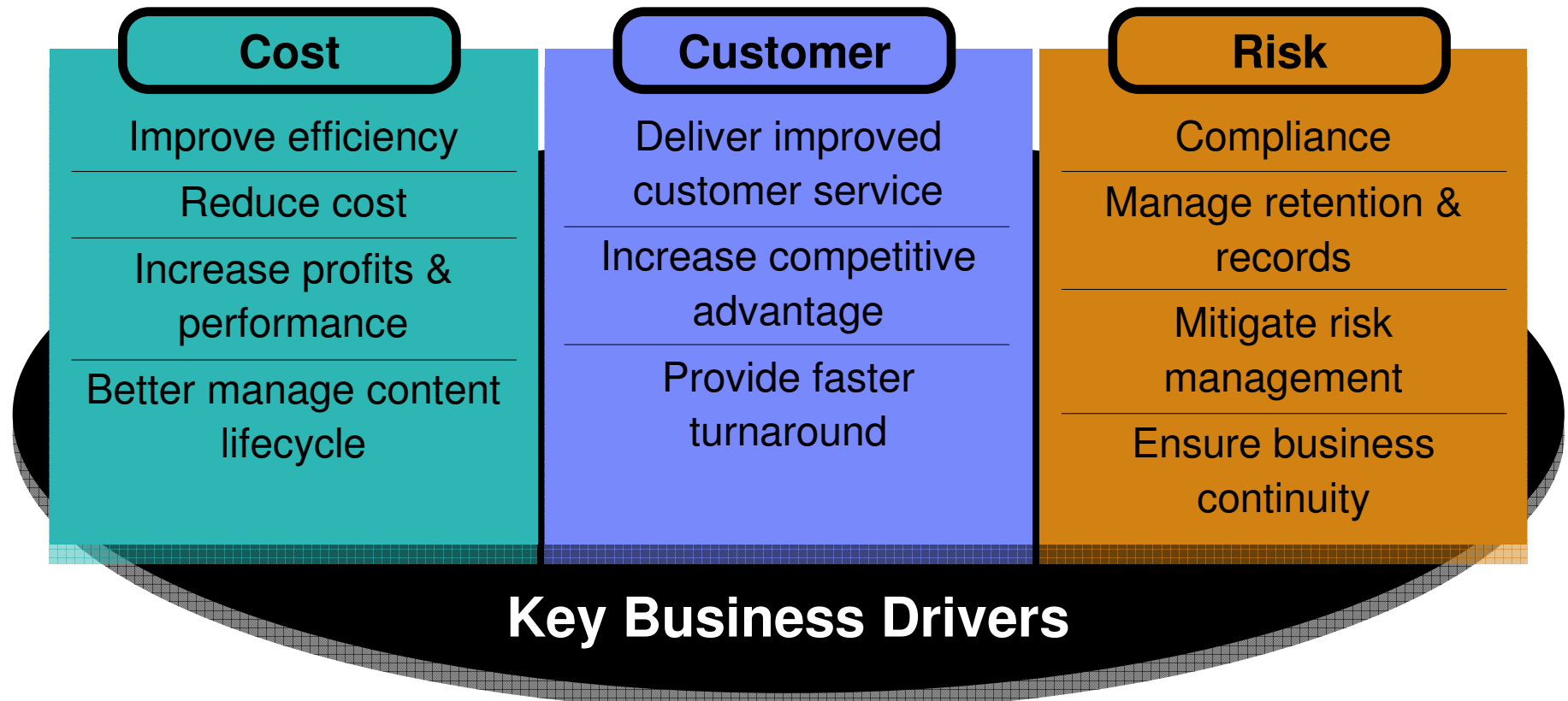
Establishing and leveraging trusted information to optimize enterprise performance

ECM is what we will discuss today



What is Enterprise Content Management?

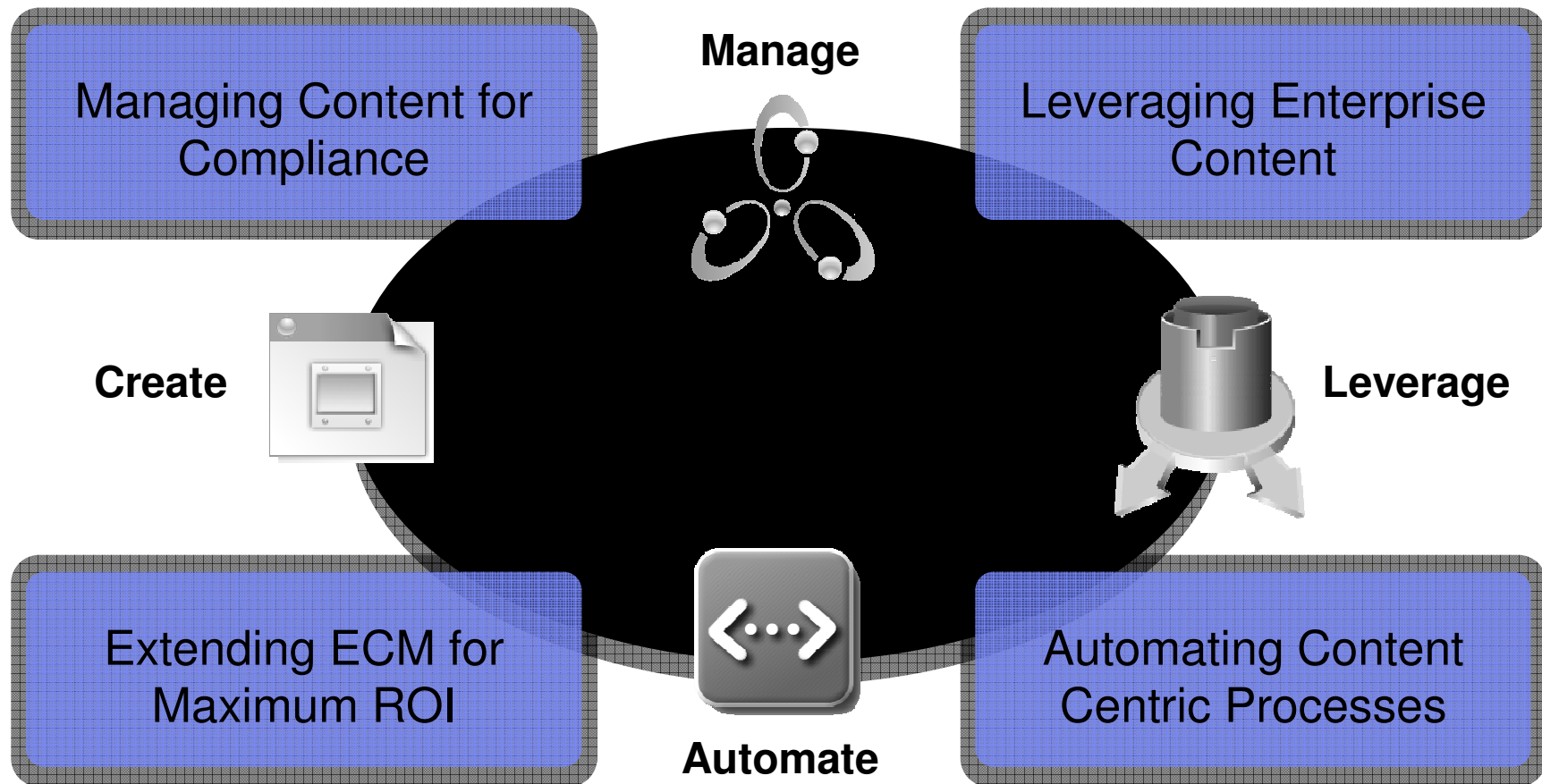
“Enterprise Content Management (ECM) is the technologies used to capture, manage, store, preserve, and deliver content and documents related to organizational processes. ECM tools and strategies allow the management of an organization's unstructured information, wherever that information exists.” Source: www.aiim.org



Source: AIIM Global Survey, March 2007, 1200+ respondents



ECM Harnesses the Power of Your Information to Solve Top Business Problems and Service All Your Constituents



Overall Business Strategy

- **IBM is the clear market leader for Content, Process, Compliance, and Search**
 - Significant gains in market share in 2007, following FileNet acquisition
- **IBM remains committed to our customers and their investments on existing products and solutions**
- **Our intent is to progressively align the existing IBM and FileNet heritage product families in a non-disruptive manner, while preserving current customer investments**

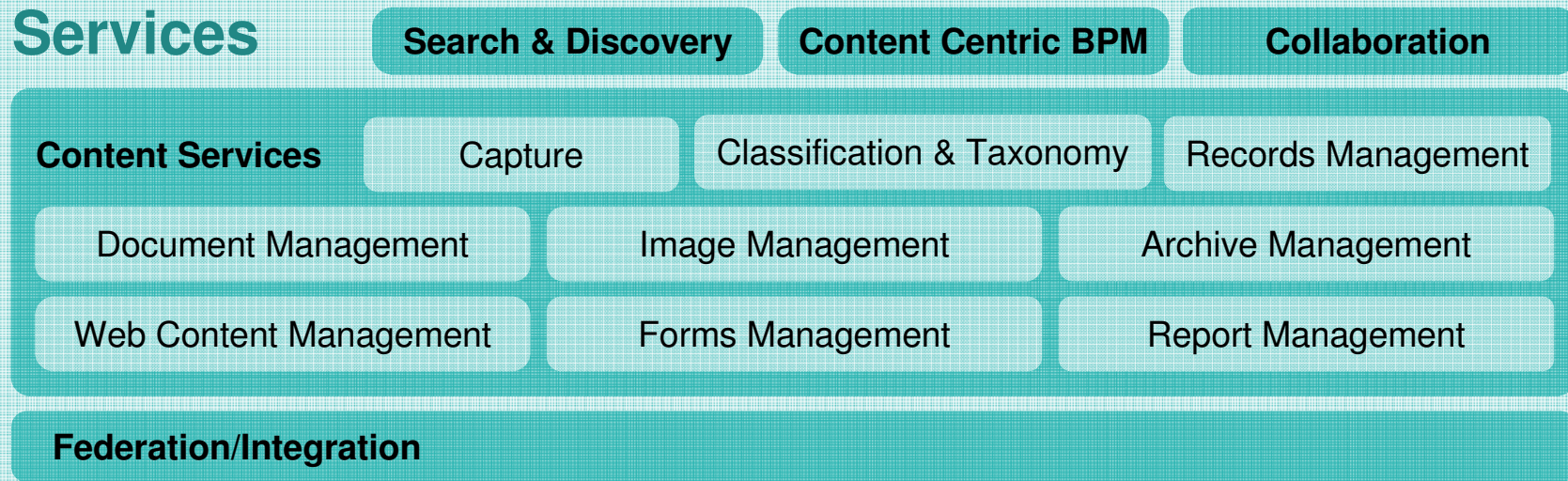


IBM ECM Architectural Overview

Clients



Services



Repositories





Enterprise Content Management

Solution Offerings for System z™



What is ECM on System z?

IBM's ECM on System z solutions provide world-class Enterprise Content Management capabilities for the most trusted, scalable, and secure server platform in the world - the IBM System z



- **IBM Content Manager (CM8) - Content Management solution**
- **IBM Content Manager OnDemand (CM OD) - Report Management and Electronic Statement/Bill Presentment solution**
- **IBM ImagePlus - high volume document imaging solution**

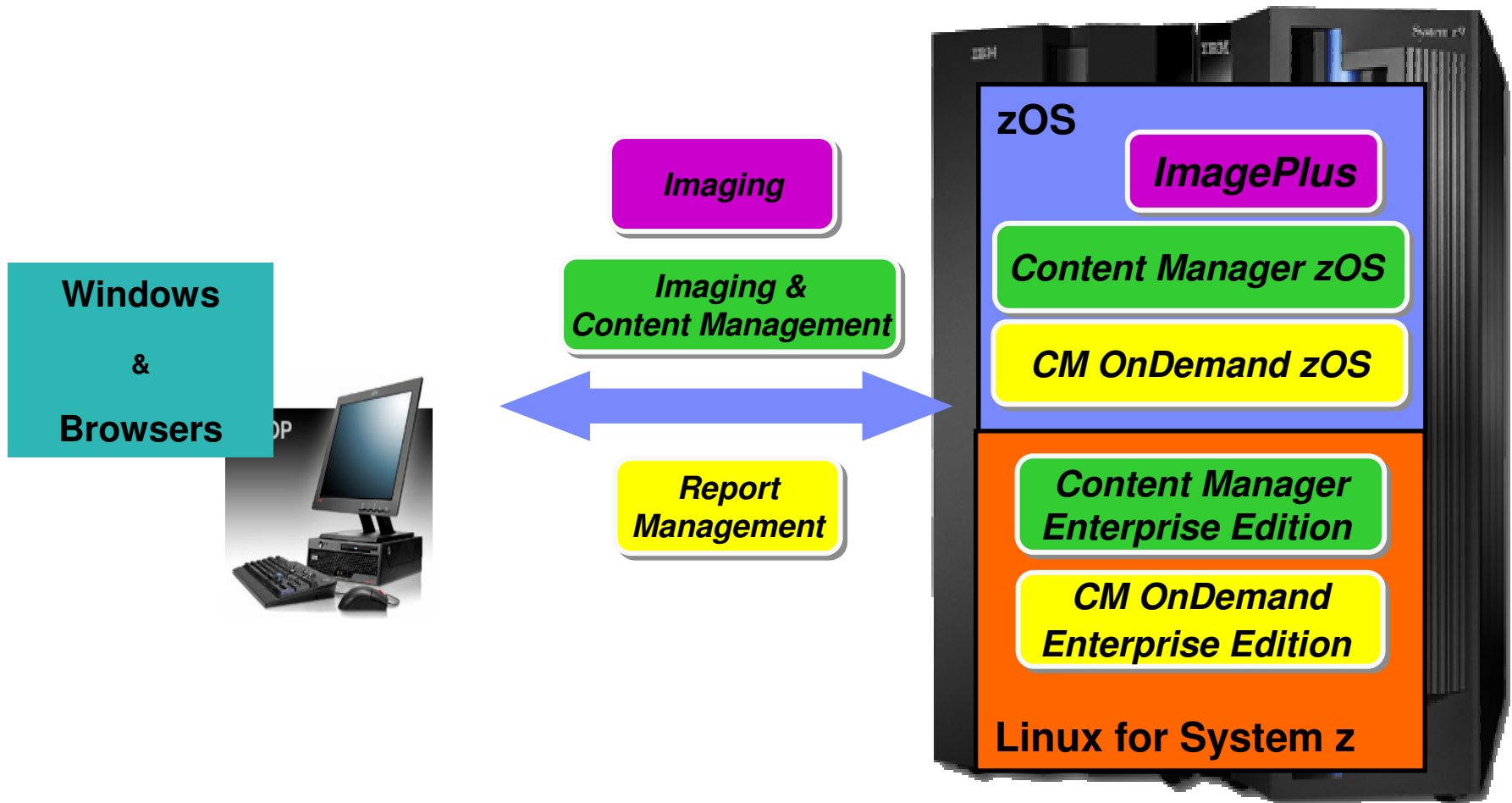


System z Positioning

- System z continues to provide the industry's premier platform for high reliability, performance, and scale
- This platform is growing in importance for ECM, given the market trend toward large ECM shared services deployments
- Content Manager, Content Manager/OnDemand, and ImagePlus are utilized on System z by many of our largest customers, as their mission critical ECM platform
- IBM will continue to support and enhance Content Manager and Content Manager/OnDemand on z/OS
- IBM has delivered Content Manager and Content Manager/OnDemand on Linux for System z
- IBM will continue to support and maintain ImagePlus



Solution Overview



Solution Overview

Applications

- *Document Imaging*
- *Report Management*
- *Electronic Bill/Statement Presentment*
- *Records Management*
- *Document Management*
- *eMail Archive*
- *Enterprise Search*
- *Business Process Management*

Distributed Servers

IBM Records Manager	IBM Document Manager	CommonStore for eMail and/or SAP	OmniFind	FileNet BPM

System z Server (Mainframe)



Content Manager

- Delivers repository services and infrastructure platform for ECM applications like production imaging, case management, records management, document management, e-mail management, digital media, and Web content management
- Manages a wide array of content types
- Offers XML-ready data model, Java™, XML and Web Services programming interfaces
- Offers an integrated hierarchical storage manager
- Offers integrated document routing and can be integrated with BPM solutions like WebSphere Process Server and FileNet BPM
- Delivers scalability and extreme high availability



IBM Web Interface for Content Management Version 1.0.2 - Microsoft Internet Explorer

File Edit View Favorites Tools Help

Address <http://ibm-hjdszobjr12:9081/wccommonservices/> Go

Web Interface for Content Management Version 1.0.2 Logged in as: icmadmi Theme Log Out

Navigation

Mode: Search Workflow

- CM
 - Find
 - All
 - Recent
 - Insurance claims
 - State Forms
 - Sample Item Type
 - NOINDEX
 - On Demand

Search In Insurance claims

Search results for Insurance claims

Page: 1 of 1 Now Showing: 1 to 6 of 6

<input type="checkbox"/>	Title	Claim Number	Policy Owner	Approved by	FileNa
<input type="checkbox"/>	Insurance Claims				
<input checked="" type="checkbox"/>	A11167543 Accident photo	C5783563	Adam McDoogle	Barney Wilson	3main
<input checked="" type="checkbox"/>	A11167543 Accident claim form	C5783563	Adam McDoogle	Barney Wilson	Skysc
<input type="checkbox"/>	View	0120200130	Gregory Twain	Ben Herman	01202
<input type="checkbox"/>	Edit Document	4852369	George Tolstoy	Alison McBRoom	4-8523
<input type="checkbox"/>	Edit Properties	00013468	Erin McCarley	John Sams	10274

- View
- Edit Document
- Edit Properties
- Send Link by E-mail
- Send Document by E-mail
- Download
- Check Out
- Cancel Check Out
- Check in
- Start on Workflow



For Detailed Information ...

Linux for System z version ...

- IBM Content Manager Enterprise Edition v8.4

www.ibm.com/software/data/cm/cmgr/mp/

z/OS version ...

- IBM Content Manager for z/OS v8.4

www.ibm.com/software/data/cm/cmgr/390/



Content Manager OnDemand

- **Delivers repository services and infrastructure platform for ECM applications like report management, statement or bill presentment, and item archive**
- **Report data (IBM AFP, Xerox Metacode*, and/or Line Data), AFP documents, and Image documents along with Index data are auto-indexed, compressed and stored for user retrieval**
- **Offers an integrated hierarchical storage manager**
- **Delivers scalability and extreme high availability**

* Xerox Metacode must be transformed prior to storage



For Detailed Information ...

Linux for System z version ...

- IBM CM OnDemand Enterprise Edition v8.4
www.ibm.com/software/data/ondemand/mp/

z/OS version ...

- IBM CM OnDemand for z/OS v8.4
www.ibm.com/software/data/ondemand/390/





Extending Your System z Infrastructure to Reduce Complexity and Lower TCO



IT organizations are challenged by a set of operational issues

Challenges



Costs & Service Delivery

Rising costs of systems and networking operations

Explosion in volume of data and information

Difficulty in deploying new applications and services



Business Resiliency & Security

Security of your assets & your clients' information

Landslide of compliance requirements

Systems and applications need to be available



Energy Requirements

Rising energy costs & rising energy demand

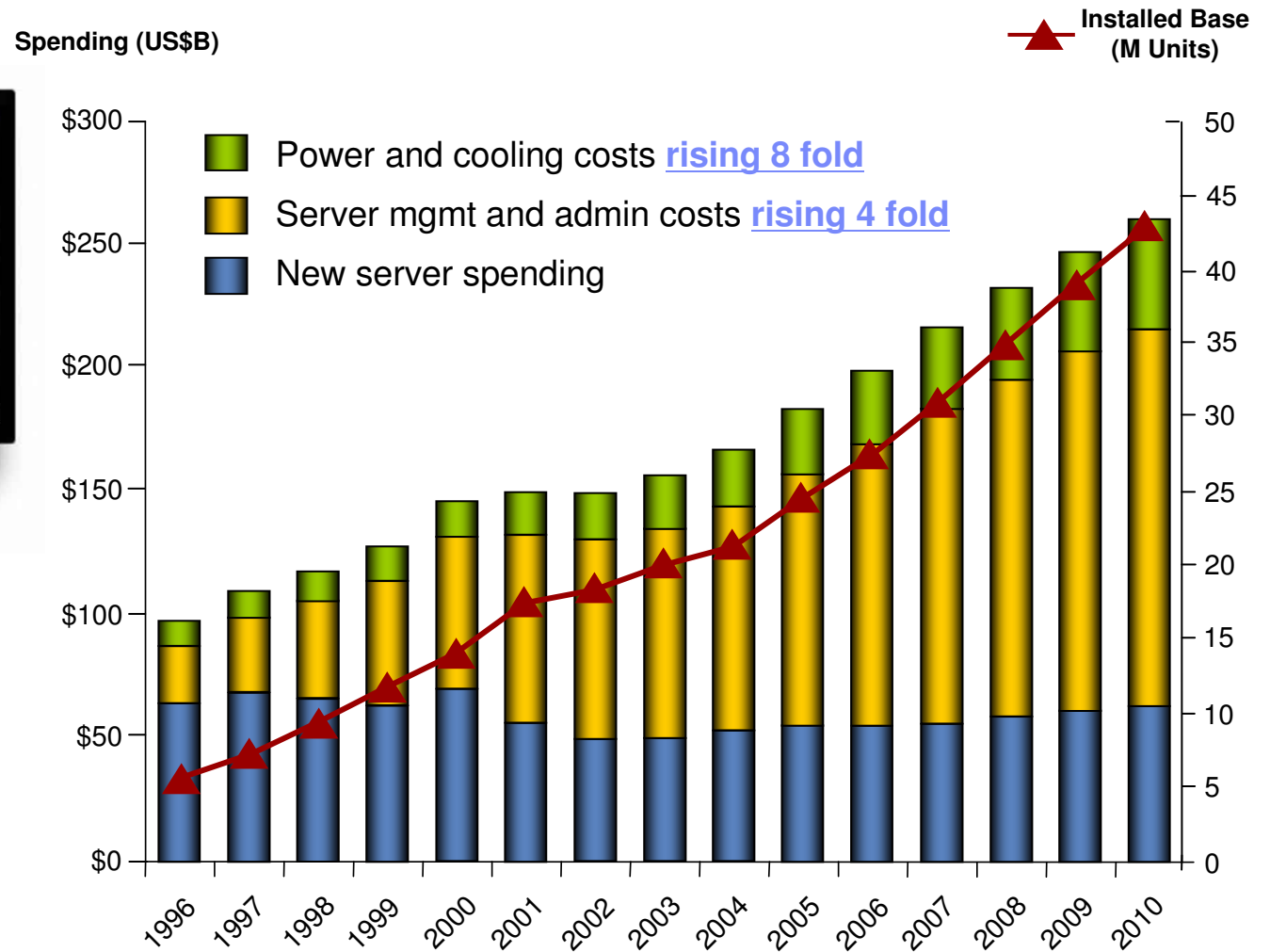
Power & thermal issues inhibit operations

Environmental compliance & governance mandates



Cost of Operations: Power, cooling, and systems management costs are growing concerns - and constraining growth

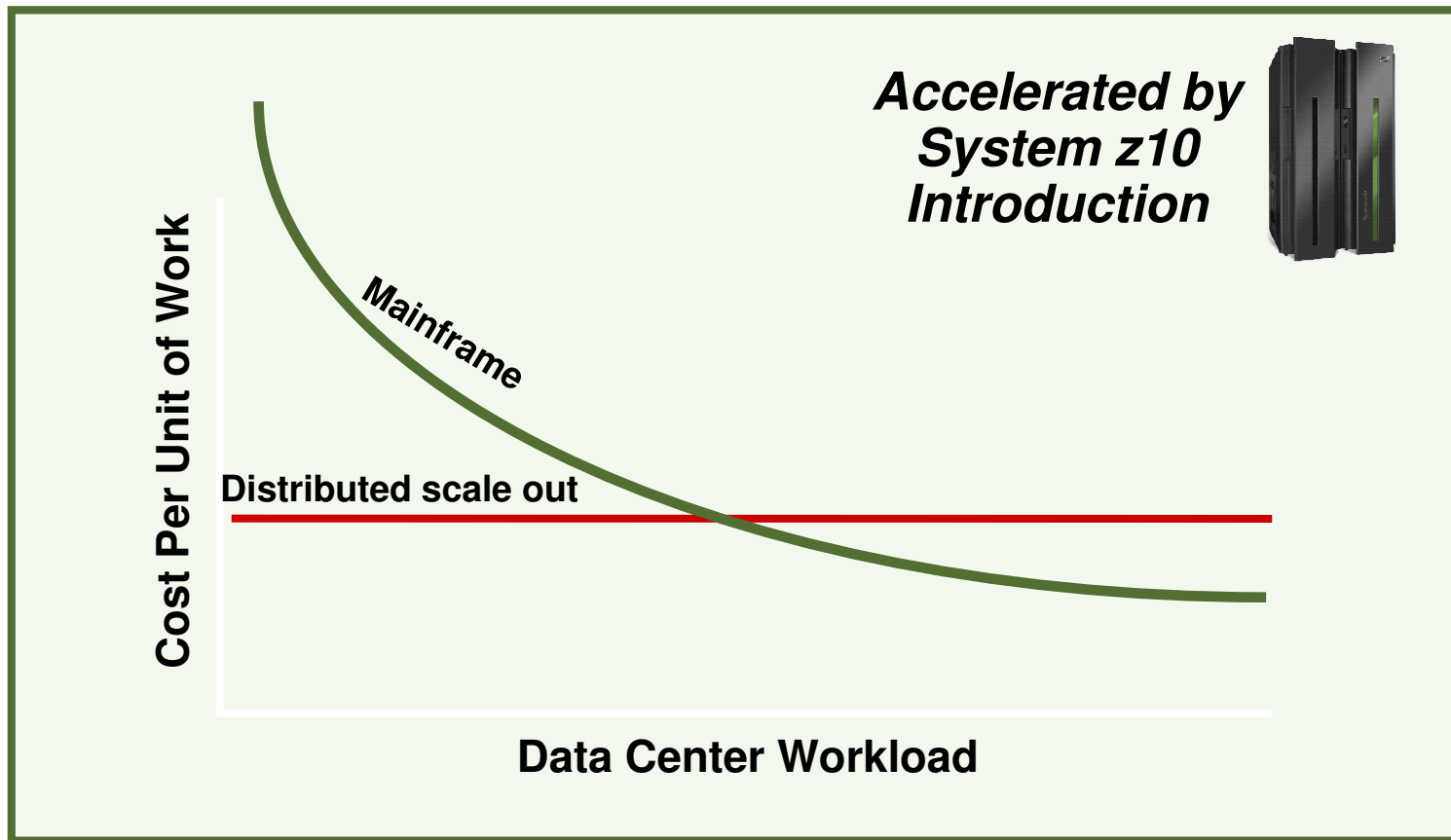
**Many Servers,
Much Capacity,
Low Utilization =
\$140B unutilized
server assets**



Source: IDC, 'Worldwide Server Power and Cooling Expense 2006-2010,' Document #203598, Sept. 2006



Mainframe Cost Per Unit of Work Decreases as Workload Increases



The New IBM System z10

- **Increased Capacity and Price/Performance Metrics**
- **Specialty Processors Reduce Cost of Adding New Workload (IFL for Linux, zAAP for Java, zIIP for DB2)**
 - Growth does not affect overall software costs
- **Significantly Reduced Power Consumption**



- **Read more on ibm.com/systems/z**



What's This Have To Do With ECM?

- **Mainframes make fabulous ECM servers because:**
 - Mainframes excel at high-availability, I/O intensive applications serving medium to large user populations
 - The Reliability, Availability, and Scalability of the System z makes it an ideal server for medium to large organizations to standardize on for ECM
 - Mainframe extension:
 - Delivers new business capability faster
 - Provides the lowest total cost of ownership for many organizations by building on the existing investments in I/T, data center and people skills
- **IBM is the only company that offers a full set of ECM capabilities for the IBM System z**





Mike Zimmer
Worldwide ECM on System z Program Manager
IBM Corporation
mzimmer@us.ibm.com

