

# Digital Transformation: Changing the Way We Act, Interact and Transact

Mike Desens

Vice President and Business Line Executive, z Systems



# Mobile is changing everything

2004

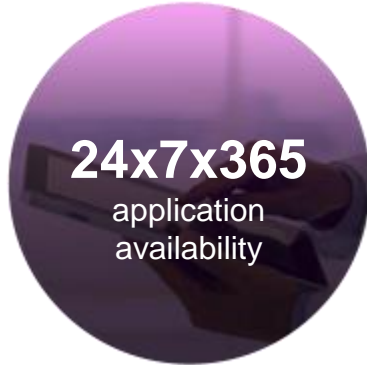
Transforming  
how we act,  
interact and  
transact.

2014

2004-2014:  
**37x** increase  
in mobile transactions  
per day per user

# The new imperatives for digital business

## Availability



## Response Time



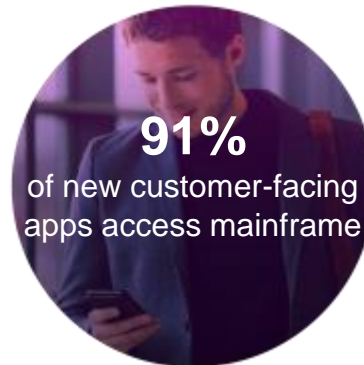
## Personalization



## Trust



## Integration



## Scale



# Organizations are exploiting the fundamental strengths of the mainframe today

- Transaction Processing
- Data Serving
- Mixed Workloads
- Operational Efficiency
- Trusted and Secure Computing
- Reliable, Available, Resilient
- Virtually Limitless Scale



# The all new IBM z13

Redefining enterprise IT for digital  
business and mobile app economy

Over \$1 billion investment with  
more than 5000 developers

Co-created with clients

Extending core strengths  
of the mainframe

z systems

Transact at the scale and  
speed of  
**mobile**

Deliver insights at the point of  
engagement with integrated  
**analytics**

Ensure highest levels of  
security and trust through  
**cloud**

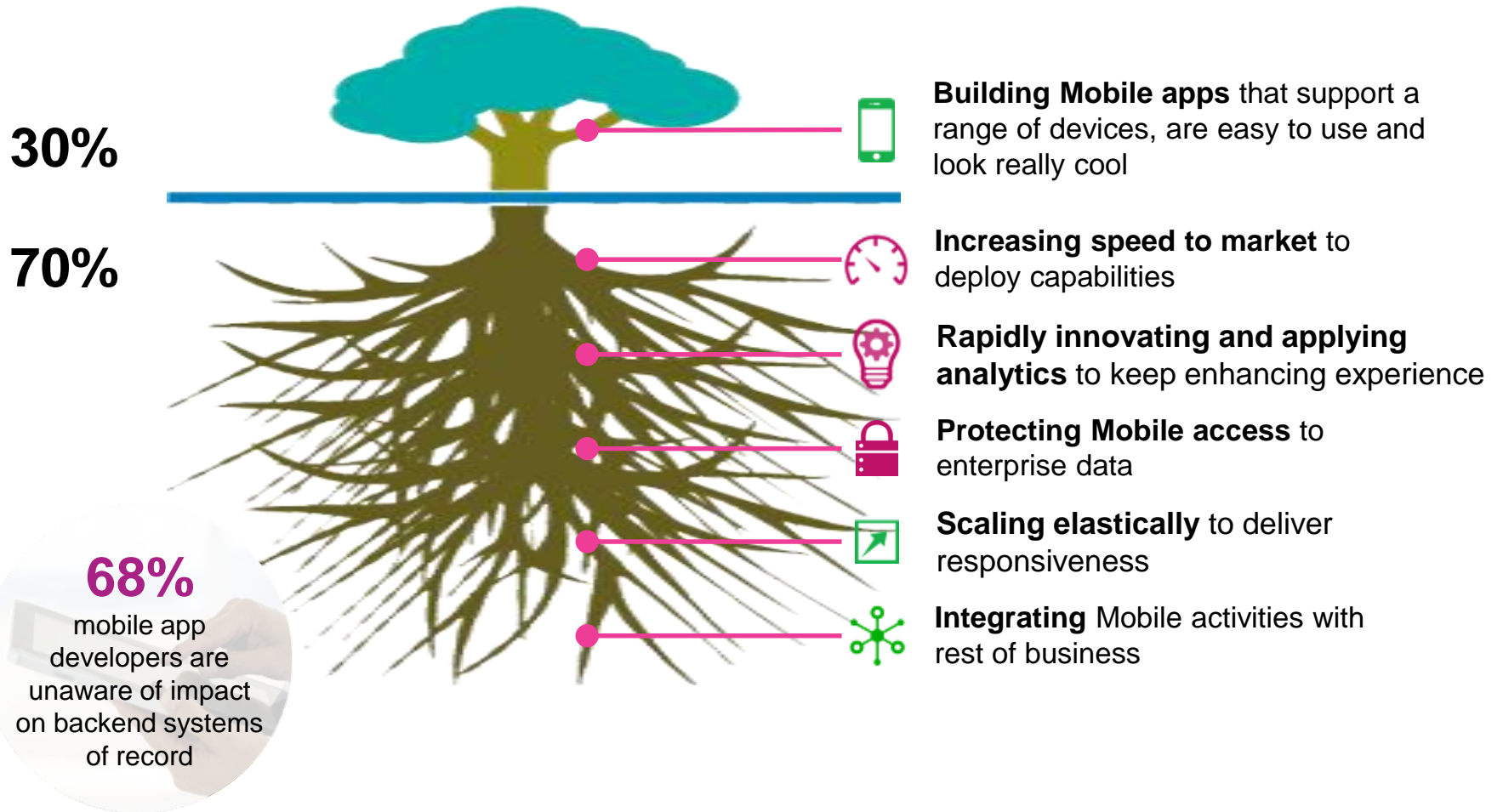


# The Starburst Effect

Each consumer transaction triggers a “starburst effect” of 4 to 100 system interactions across the network.



# Rethinking Infrastructure for Mobile Moments



# The world's premier data and transaction server

*Now empowering the mobile generation*

**141 high performance** cores delivering 40% more capacity

**Simultaneous multi-threading** for up to 30% more throughput

**10TB memory** to eliminate I/Os for up to 70% faster response time

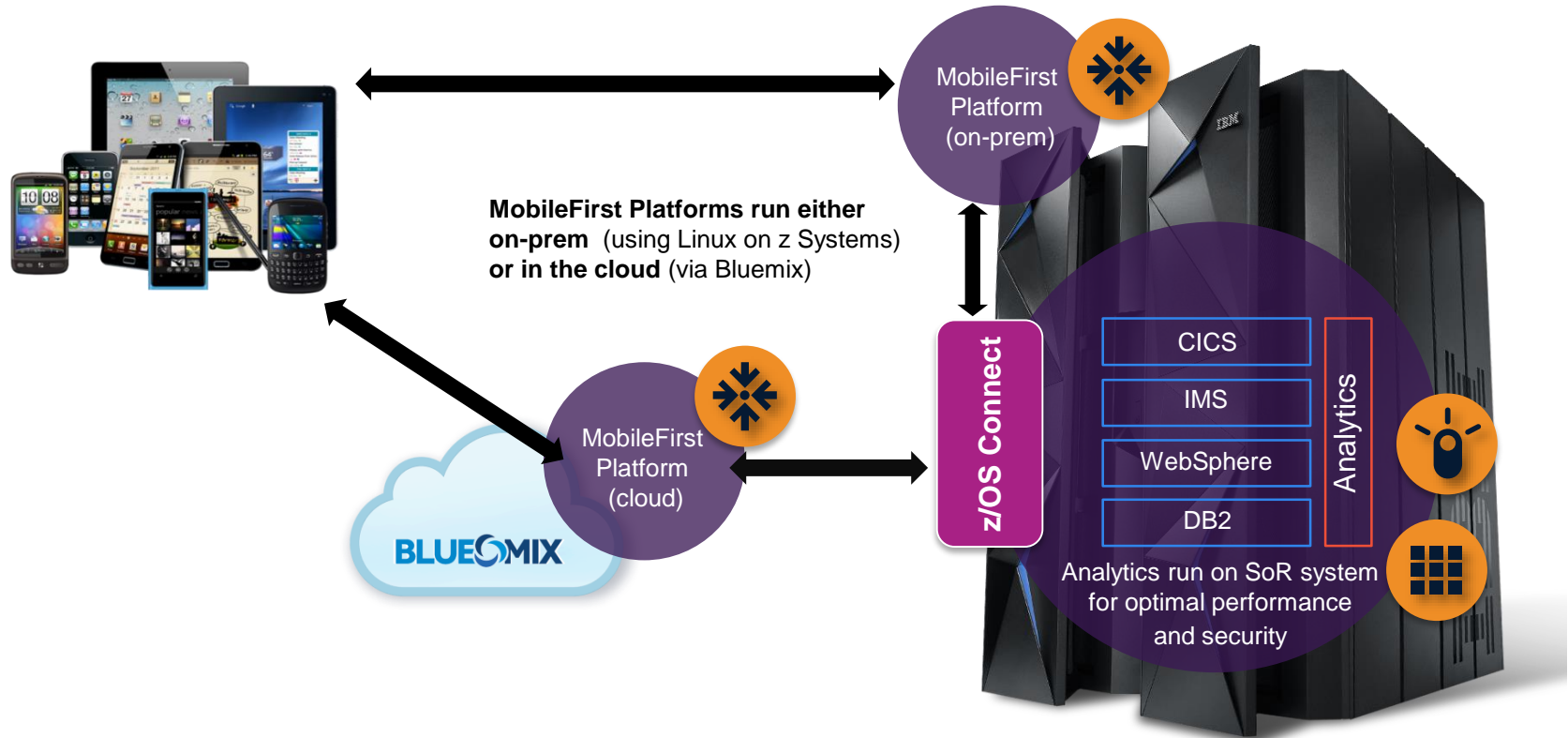
**320** Separate channels of dedicated I/O

**2x** The Cache and I/O Bandwidth

**DS8000** flash enclosures for 3x increase in z Systems database performance



# IBM z Systems bridge Systems of Record with Systems of Engagement for optimized service delivery



Serving mobile data directly from z/OS is 40% less expensive than exporting to a system of engagement



Speeding transportation with a mobile ticket application



Processing a surging tide of mobile payments quickly and securely



Providing the highest level of protection for classified communications

# Data is the newest resource for competitive advantage

**7.6%**

boost

to customer lifetime value for firms using engagement analytics

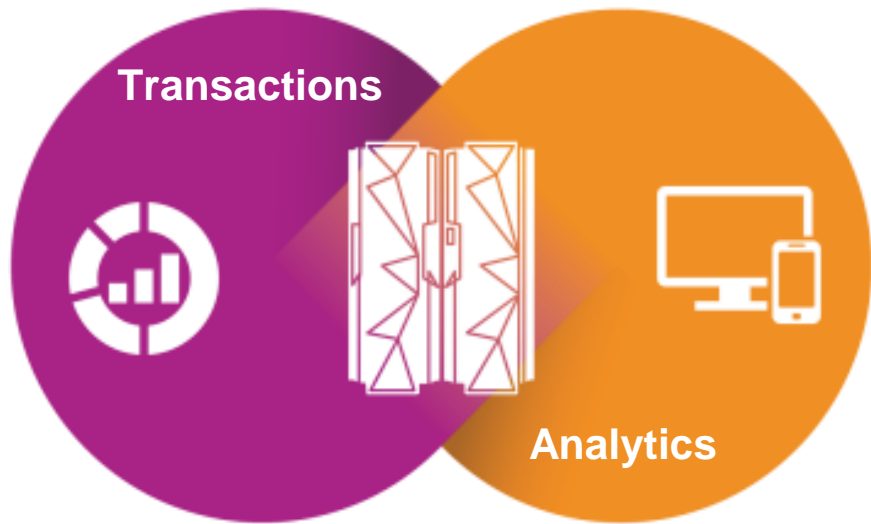
**\$13**

for every dollar spent

nucleus estimate of analytics payback; 1.2 X more than 3 years ago

But, Today's implementations  
add **Complexity**  
add **Cost**  
add **Latency**

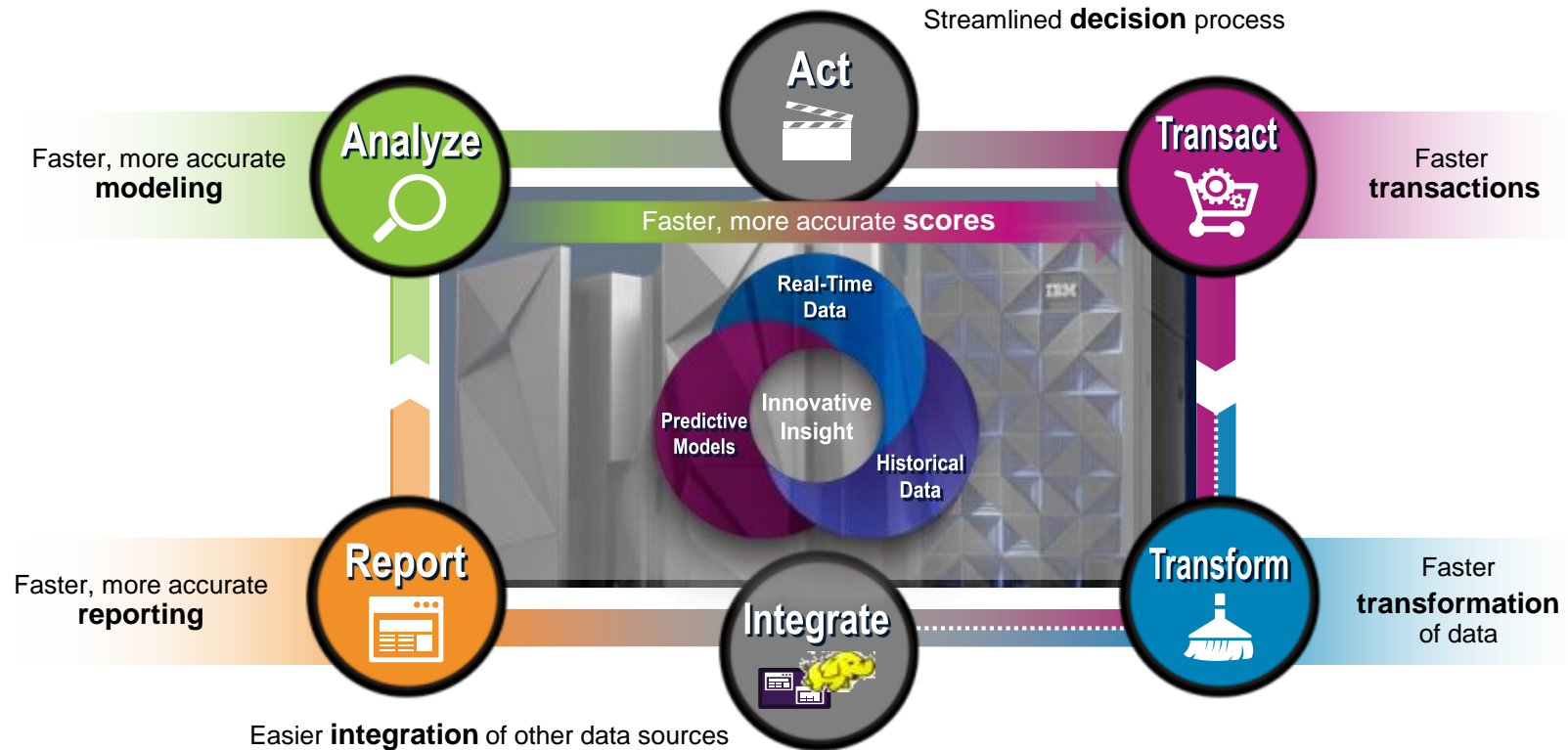
# Bring analytics to where the data and transactions originate for greatest value



- Deliver right-time insights at the point of impact
- Manage data lifecycle and governance
- Eliminate redundancy and avoid ETL

**100%** of transactions scored without impact of service

# z Analytics delivers the breadth of capabilities



***Best of class integrated data and analytics life cycle management for: Generating customer insights, fighting fraud and financial crimes, ...***

# An integrated transaction and analytics system

*For right-time insights at the point of impact*

## DB2 Analytics Accelerator

delivering in-database transformation and advanced predictive analytics

## DB2 BLU Acceleration

speeds analytics and reporting for DB2 on Linux

## HADOOP

support for InfoSphere BigInsights with new connector technology

## SIMD

speeding complex mathematical queries up to **80%** with single instruction multiple dataset

## zEDC

accelerated data compression to reduce data transfer volumes & storage costs by up to **75%**



**PETROL**

Increased retail sales  
revenue through  
point-of-sale  
suggest-sell insight



**Swiss Mobiliar**  
*Insurance & Pensions*

Delivers most timely,  
accurate data for  
improved customer  
satisfaction



  
**BANCA CARIGE**  
Cassa di Risparmio di Genova e Imperia

Reduced time from  
months to weeks to  
develop and release  
new marketing  
campaigns

# Businesses of all sizes deploy Cloud for service delivery in the digital era

Cloud deployment has grown **92%** since 2012<sup>1</sup>

Approximately **70%** of enterprises will pursue hybrid cloud by 2015<sup>2</sup>

**57%** of companies are using cloud to drive competitive and cost advantage<sup>3</sup>

**85%** of new SW is being built for the Cloud<sup>4</sup>

Customers with a clearly defined Cloud strategy enjoy **almost 2x the revenue growth and nearly 2.5x higher gross profit** than peers<sup>5</sup>

Source: <sup>1</sup>“Raising the game, The IBM Business Tech Trends Study,”

<sup>2</sup>“Private Cloud Matures, Hybrid Cloud is Next,” Gartner G00255302, Sept 6, 2013

<sup>3, 4, 5</sup> IBM Global Cloud Study “Under Cloud Cover”



# IBM z Systems provide the infrastructure to support all dimensions of cloud service delivery



## Private Cloud

z/OS and Linux on System z as the foundation of the most secure, scalable private cloud infrastructure



## Hybrid Cloud

Leveraging Bluemix and interoperability with SoftLayer, AWS and other public cloud offerings



## Public Cloud

Enabling MSPs/CSPs to deliver differentiated mainframe-based service offerings

**Elastic, virtually limitless expansion**

**Shared everything design for extreme utilization**

**Secure isolation of Virtual Servers**

**Built on open industry standards**

# The world's most efficient and trusted cloud system

*Transforming the economics and agility of enterprise IT*

**8,000**

virtual servers in a single system, more than **50** per core

**85 LPARs**

increasing flexibility in workload deployment

**KVM**

supports open virtualization with access to **open source** databases, tools & applications

**zAware & GDPS**

for continuous business operations, now available for **LINUX**

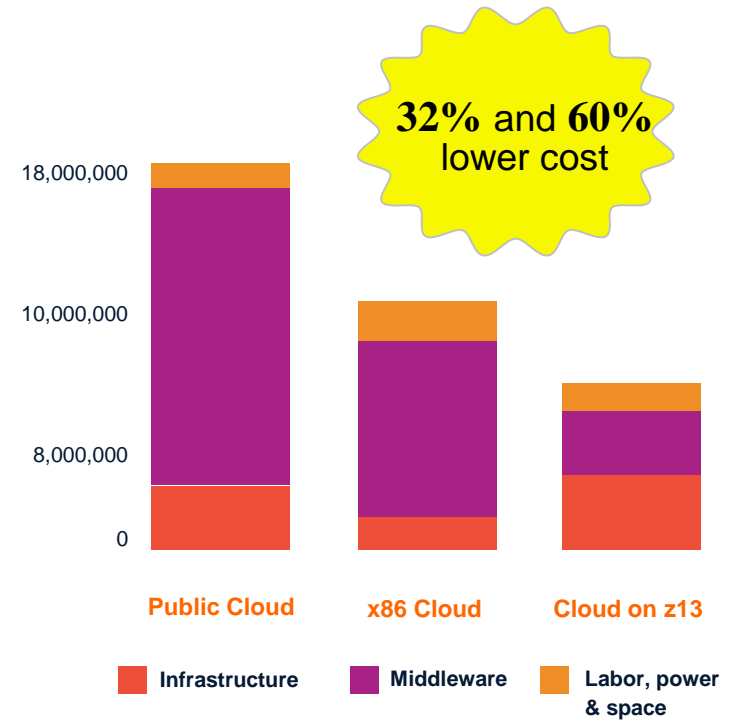
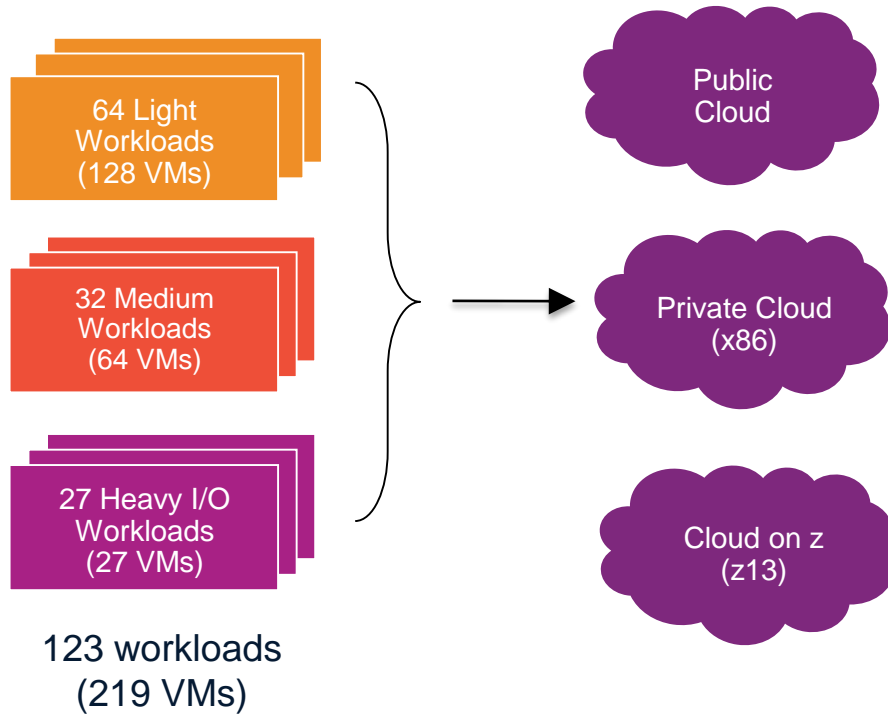
**Crypto Express5S**

accelerating speed of encryption up to **2x**

**Hybrid Cloud Connect Test Drive**

to optimize integration with SoftLayer

# Private cloud on z13 yields the lowest cost



# IBM z Systems software pricing announcements

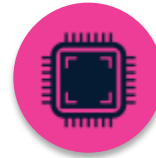
## IBM continues to deliver software price/performance with latest hardware



### IBM Collocated Application Pricing (ICAP)

*Run your systems the way they were meant to be run*

Integration of new applications priced as if in a dedicated environment



### z/TPF Transformation Engine Offering

*Supporting the growth of analytics, mobile and security*

Special priced engines for new z/TPF workloads without impact to software charges



### Country Multiplex Pricing

*Evolution of Sysplex pricing, a shift to total flexibility and simplicity*

Flexibility to move and run work anywhere within a multiplex



### Mobile Workload Pricing for z/OS *(Announced in 2Q 2014)*

*Enables IT investments to scale with growth & business returns of mobile*

Up to 60% reduction in incremental growth from mobile transactions

# LINUX ON Z - IBM LinuxONE ANNOUNCEMENTS

**IBM LINUXONE SYSTEMS**  
 THE MOST TRUSTED, EFFICIENT AND HIGH  
 PERFORMANCE ENTERPRISE-GRADE  
 LINUX PLATFORM

**OPEN SOURCE & ISV ECOSYSTEM**  
 LINUX YOUR WAY

IBM LinuxONE  
 Emperor™

IBM LinuxONE  
 Rockhopper™



Distributions	Hypervisors	Languages	Runtimes	Management	Database	Analytics
ubuntu <small>Supported by Canonical</small>	KVM	python	nodeJS	docker	MariaDB	Spark
suse	VM	Ruby	rails	CHEF	mongoDB	hadoop
redhat	LPAR	php	zF	juju	PostgreSQL	IBM InfoSphere BigInsights
		ERLANG	OpenJDK	openstack	cassandra	IBM Acceleration
		Scala	JS	vmware vRealize	CouchDB	
		Clojure	OCaml	Cloud Manager	ORACLE Diamond Partner	
		Java	Java	urban(code)	DB2	

**IBM LINUXONE SOLUTIONS**  
 DESIGNED FOR THE  
 DIGITAL ECONOMY



Mobile



Cloud



Analytics



DevOps

**NEW IBM LinuxONE Elastic Pricing**

**COMMUNITY COLLABORATIONS**  
 COMMITMENT TO THE OPEN COMMUNITY

Open  
 Mainframe  
 Project

IBM LinuxONE  
 Community  
 Cloud

IBM zAware  
 Source Code  
 Contribution

# Enabling the tech stars of the future



70  
countries



1,400  
universities



180,000  
students



The **2016** z Systems  
IBM Master the Mainframe  
World Championship!



**Online z courses** available to anyone,  
anywhere, anytime

**MARIST**



SYRACUSE UNIVERSITY



**IBM z Systems  
Job Connector  
zjobconnector.com**





# **A new generation of z Systems designed for the mobile generation**

**With the highest speeds, the most diverse workloads,  
and simply the best security on the planet**