



**System z10**  
Leveraging new technology  
for new workloads

*The future runs on System z*

***Thomas Wolf***  
***Director***  
***System z Firmware Development***  
***IBM Systems and Technology Group***



# Trademarks

The following are trademarks of the International Business Machines Corporation in the United States and/or other countries.

IBM*	System x*
IBM Logo*	System z*
DB2*	System z10
Dynamic Infrastructure*	Tivoli*
GDPS*	z10
HyperSwap	Z10 BC
InfoSphere	z/OS*
Parallel Sysplex*	z/VM*
Power Systems*	z/VSE
RACF*	zSeries

\* Registered trademarks of IBM Corporation

The following are trademarks or registered trademarks of other companies.

Adobe, the Adobe logo, PostScript, and the PostScript logo are either registered trademarks or trademarks of Adobe Systems Incorporated in the United States, and/or other countries.

Cell Broadband Engine is a trademark of Sony Computer Entertainment, Inc. in the United States, other countries, or both and is used under license therefrom.

Java and all Java-based trademarks are trademarks of Sun Microsystems, Inc. in the United States, other countries, or both.

Microsoft, Windows, Windows NT, and the Windows logo are trademarks of Microsoft Corporation in the United States, other countries, or both.

INFINIBAND, InfiniBand Trade Association and the INFINIBAND design marks are trademarks and/or service marks of the INFINIBAND Trade Association.

Intel, Intel logo, Intel Inside, Intel Inside logo, Intel Centrino, Intel Centrino logo, Celeron, Intel Xeon, Intel SpeedStep, Itanium, and Pentium are trademarks or registered trademarks of Intel Corporation or its subsidiaries in the United States and other countries.

UNIX is a registered trademark of The Open Group in the United States and other countries.

Linux is a registered trademark of Linus Torvalds in the United States, other countries, or both.

ITIL is a registered trademark, and a registered community trademark of the Office of Government Commerce, and is registered in the U.S. Patent and Trademark Office.

IT Infrastructure Library is a registered trademark of the Central Computer and Telecommunications Agency, which is now part of the Office of Government Commerce.

\* All other products may be trademarks or registered trademarks of their respective companies.

## Notes:

Performance is in Internal Throughput Rate (ITR) ratio based on measurements and projections using standard IBM benchmarks in a controlled environment. The actual throughput that any user will experience will vary depending upon considerations such as the amount of multiprogramming in the user's job stream, the I/O configuration, the storage configuration, and the workload processed. Therefore, no assurance can be given that an individual user will achieve throughput improvements equivalent to the performance ratios stated here.

IBM hardware products are manufactured from new parts, or new and serviceable used parts. Regardless, our warranty terms apply.

All customer examples cited or described in this presentation are presented as illustrations of the manner in which some customers have used IBM products and the results they may have achieved. Actual environmental costs and performance characteristics will vary depending on individual customer configurations and conditions.

This publication was produced in the United States. IBM may not offer the products, services or features discussed in this document in other countries, and the information may be subject to change without notice. Consult your local IBM business contact for information on the product or services available in your area.

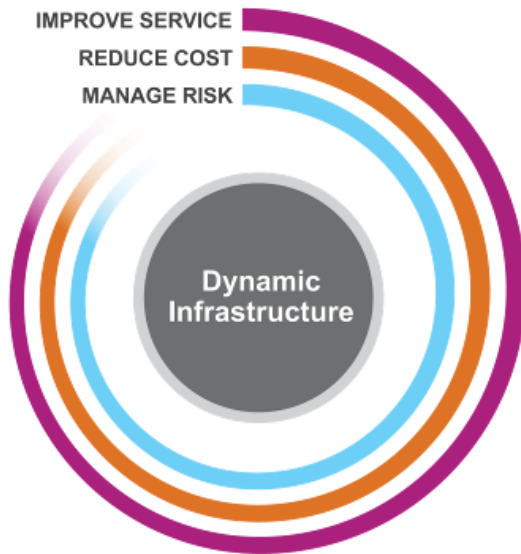
All statements regarding IBM's future direction and intent are subject to change or withdrawal without notice, and represent goals and objectives only.

Information about non-IBM products is obtained from the manufacturers of those products or their published announcements. IBM has not tested those products and cannot confirm the performance, compatibility, or any other claims related to non-IBM products. Questions on the capabilities of non-IBM products should be addressed to the suppliers of those products.

Prices subject to change without notice. Contact your IBM representative or Business Partner for the most current pricing in your geography.

# Discussion Topics

- **The Dynamic Infrastructure<sup>®</sup> for a smarter planet**
- **The role of IBM System z<sup>®</sup> in the Dynamic Infrastructure**
- **State of the System z business**
- **What's ahead for System z**



## IBM's smarter planet vision



let's build a smarter planet

*The world has become flatter and smaller. Now it must become smarter.*

## Four major IBM initiatives

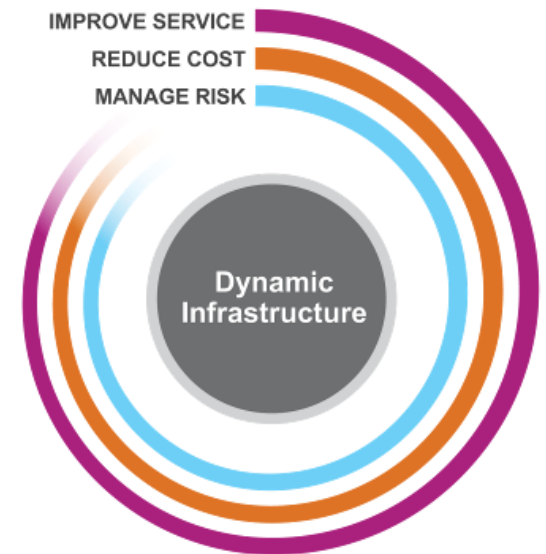
**Dynamic Infrastructure**

**New Intelligence**

**Green & Beyond**

**Smart Work**

## Dynamic Infrastructure



*delivers superior business and IT services with agility and speed*

# System z innovations for a dynamic infrastructure

**... System z delivers extreme business value through industry leading security, availability, scalability, virtualization and management capabilities**

## IBM System z



- **IMPROVE SERVICE**
  - Dynamic, policy based, and automated SOA infrastructure
  - Adapt and respond quickly to changing business imperatives
- **REDUCE COST**
  - Industry-leading virtualization, energy efficiency, and scale
- **MANAGE RISK**
  - Secures your business, reduces risk, builds trust and confidence
  - Superior qualities of service allows clients to run their businesses reliably

# System z: leadership capabilities for a dynamic infrastructure Now... and in the future

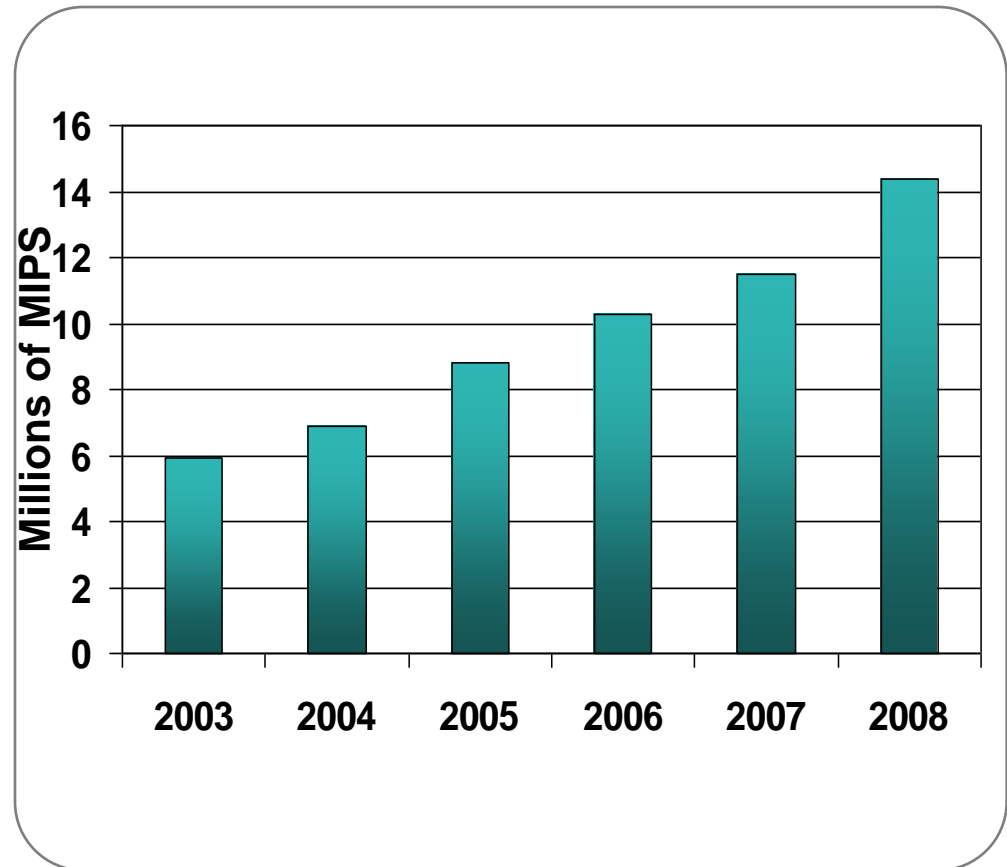


- Highly secure and resilient enterprise data hub
- Industry leading large scale OLTP server
- Highly cost and energy efficient consolidation platform
- Highly utilized enterprise server for mission critical workloads
- Extend System z QoS and management to heterogeneous platforms
- Extending reach across the application layer
- A hub for data intensive business processes and business intelligence
- Optimize cost efficiencies and risk across broader enterprise workloads

# *System z Business Update, Strategy, and Future Directions*

# IBM z installed capacity continue to grow at double digit rates

- **System z total installed MIPS<sup>1</sup> has grown 20% CAGR since 2003**
  - Specialty engine capacity growing at an astonishing 93% rate
  - Since IBM launched the z900 in 4Q 2000, System z has *nearly doubled its share*, from 17% to 33% in the enterprise server segment<sup>2</sup>
- **Since the introduction of the z10 in February 2008, System z has grown revenue by 10% and increased market share**



<sup>1</sup> IBM internal MIPS inventory numbers, Sept 08; HP wins based on internal IBM Sales tracking data

<sup>2</sup> IDC server tracker, Nov 08, , \$250K+ servers



## IBM System z: The renaissance continues...

<b>System z Highlights</b>	<b>Full Year 2008</b>
<b>Hardware Revenue</b>	<b>11% YTY @ CC</b>
<b>MIPS Growth</b>	<b>+25% YTY</b>
<b>Specialty Engine MIPS</b>	<b>+68%</b>
<b>New Accounts</b>	<b>54</b>
<b>University Program</b>	<b>130 New Universities</b>
<b>ISVs</b>	<b>&gt;150 New ISVs, &gt;1000 apps</b>

# Milestones

- ✓ 5 years – IBM Academic Initiative, System z
- ✓ 537 schools, over 50,000 students worldwide educated
- ✓ 13 Student Contests in 13 countries with 14,672 students from 1,956 schools
- ✓ Resume database and Entry Level Mastery Test
- ✓ Community involvement (roundtables, partnerships, hiring)
- ✓ More educators and students are embrace IBM Enterprise Systems
- ✓ Students are getting jobs

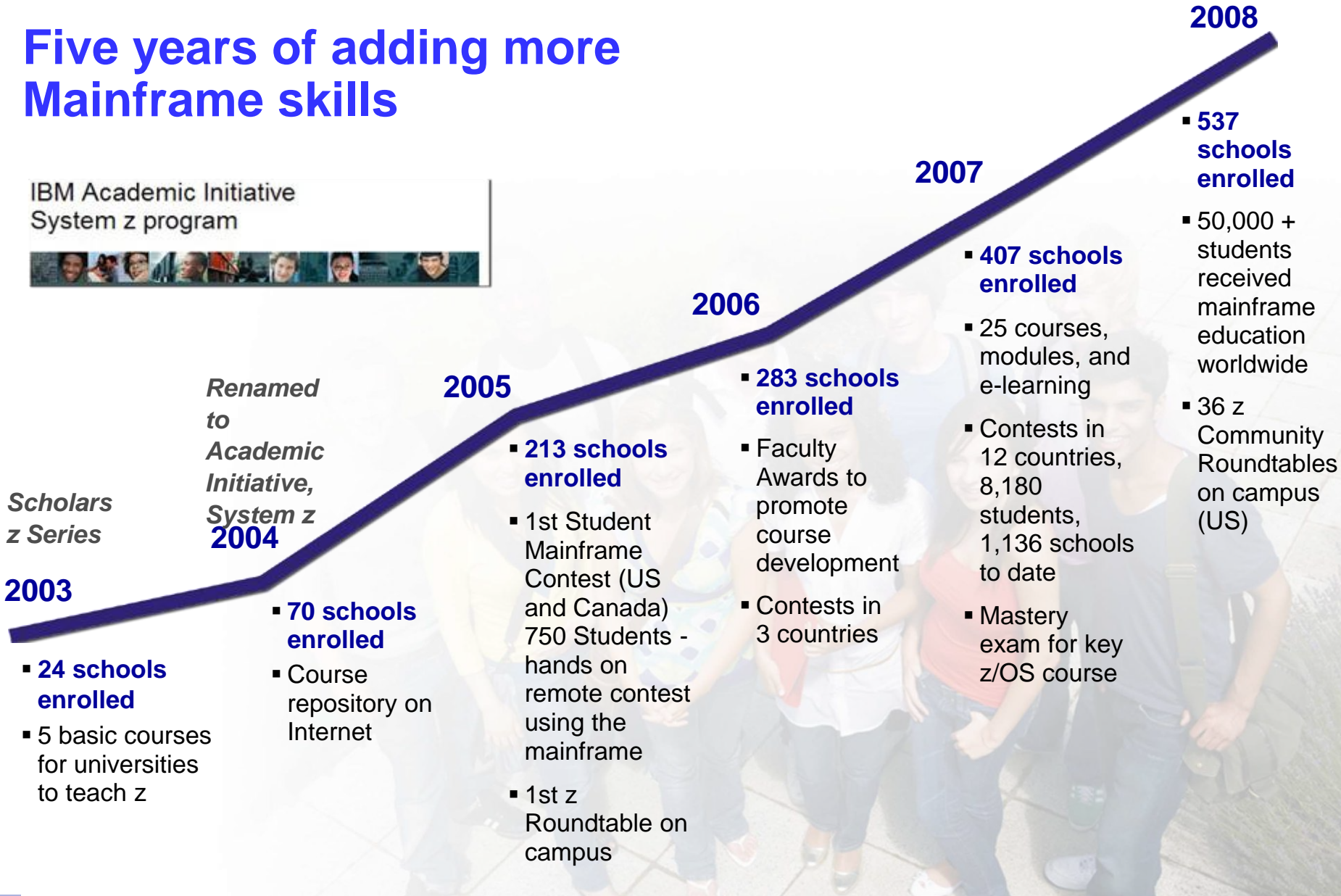


***“Master the Mainframe Contest’ helped me get a job at Bank of Montreal.”***

Elizabeth Bell, Georgian College

# Five years of adding more Mainframe skills

IBM Academic Initiative  
System z program



# System z strategy

- 1. *Innovate to address the IT infrastructure challenges of today and the future***
  - Further simplify, consolidate and reduce the costs of an IT infrastructure
  - Integrate, virtualize and coherently manage the multiple and varied elements of business applications
  - Scale up and leverage System z strengths in data serving
- 2. *Extend strengths of System z***
  - Invest for continued leadership in System z: performance, virtualization, enterprise security, enterprise business continuity
  - Extend System z best of breed capabilities to a broader set of workloads
  - Deploy optimized technologies for specific applications or components
- 3. *Expand the ecosystem and support core applications that our clients want***
  - Recruit new solutions and solution providers and integrators
  - Expand skills and capabilities across the globe



# The IBM System z10™ Enterprise Class... a marriage of evolution and revolution

## Evolution

- Scalability and virtualization to reduce cost and complexity
- Improved efficiency to further reduce energy consumption
- Improved security and resiliency to reduce risk
- New heights in storage scalability and data protection

## Revolution

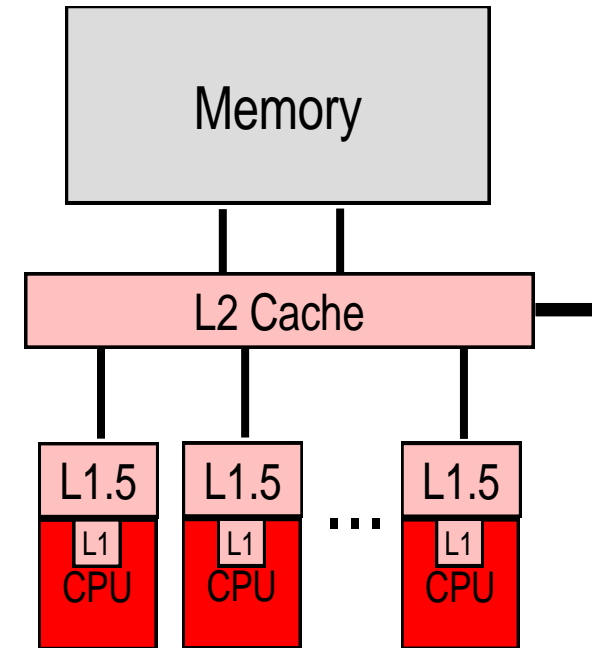
- 4.4 GHz chip to deliver improved performance for CPU intensive workloads
- ‘Just in time’ deployment of capacity resources
- Vision to expand System z capabilities with appliance technology



# Enhanced attributes of System z10

## - Java and new application performance focus

- **Processor core**
  - 4.4 Ghz and new pipeline
  - larger on-chip cache (L1.5)
- **L2 Cache**
  - Size increased
  - cache sharing enhanced with “Star” topology interconnect
- **ISA (Instruction Set Architecture) extensions**
  - over 50 new instructions including ...
    - storage immediate, compare and relative instructions
    - compare and branch, compare and trap
    - prefetch or "touch" instructions
  - improved code efficiency for Java and C++ code
- **DFP (Decimal Floating Point) instructions in HW**
  - improved performance and precision for decimal calculations
- **Large Page (1 MB) support**
  - improved TLB effectiveness
- **Exploitation of the above comes in various flavors**
  - JIT automatically uses many of these items beginning with the JVM running Java 6 SR1
  - additional JVM exploitation in Java6 SR2 and later releases
  - C,C++ compile time options targeting z10
  - application development



# System z10 Java 6 Performance

- **Exploits z10 out of the box**
- **New features**
  - Faster thread performance (~1.5x MIPS)
  - Large page support
    - zOS only provides authorized support in R1.9
  - Extensions to the ISA
    - 20+ new instructions are exploited
  - Decimal Floating Point for BigDecimal objects
- **Average improvement across 8 single threaded benchmark cases shows 2.1X improvement vs z9**
- **Multi-threaded case shows 1.7x improvement vs z9**
- **XML parsing results average 1.9X improvement vs z9**

# Extending System z management and QoS to non-z technologies

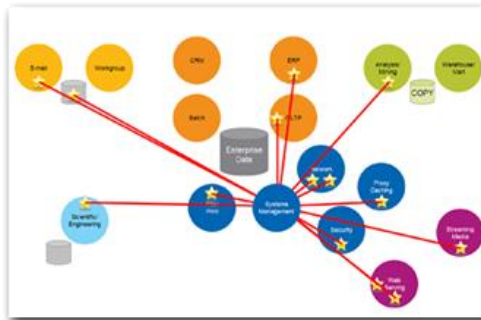
- A single management and policy framework across web serving, transaction, and database to lower the cost of enterprise computing
- Mainframe QoS characteristics will be extended to acceleration appliances and application servers to manage risk
- The dynamic resource management of the mainframe is extended to all devices within a multi-tier architecture to improve service

## *System z Future*

System z  
Mainframe



Integrated Systems  
Management Firmware



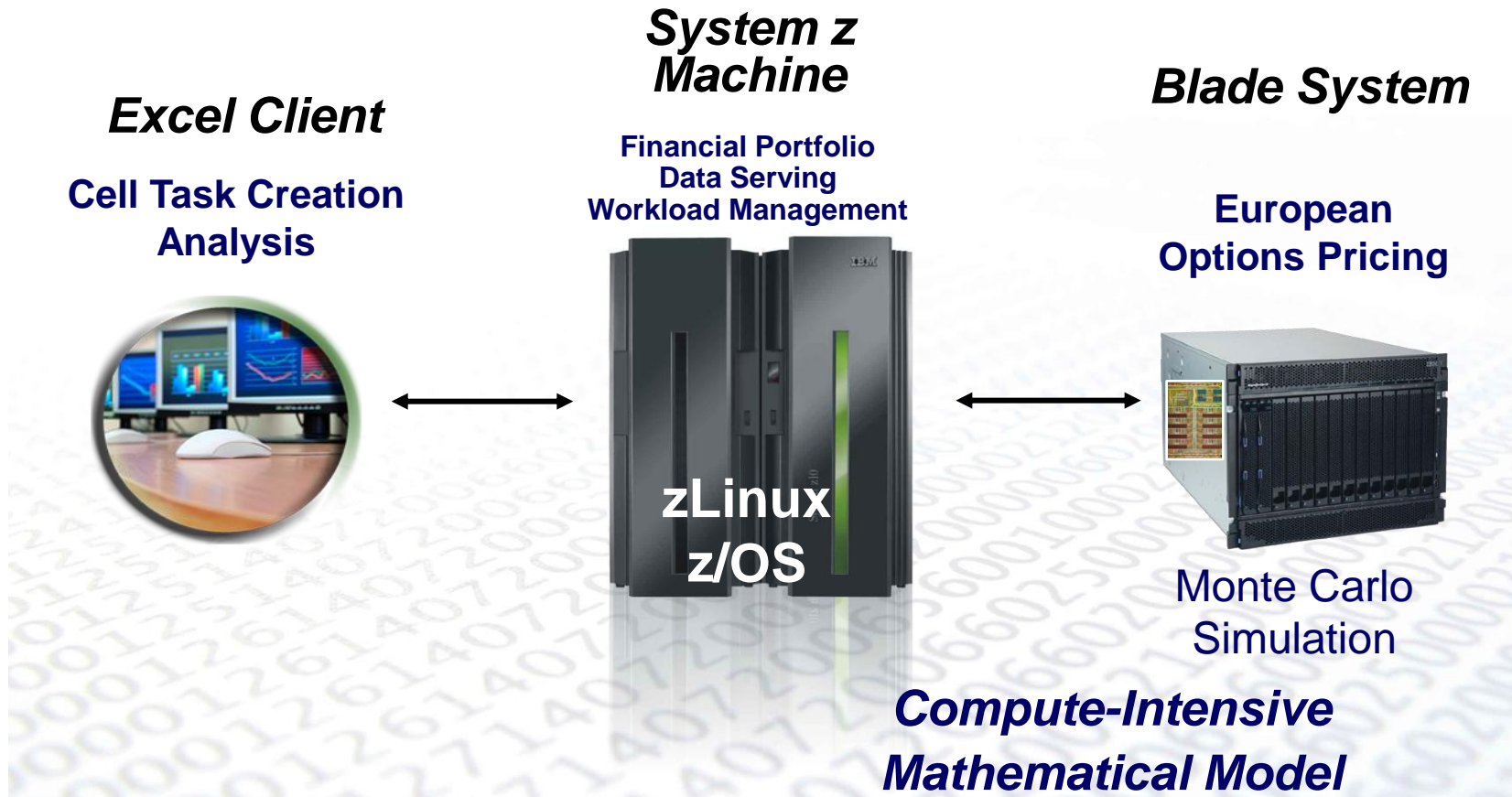
Accelerators and Application  
Serving Blades





# Exploiting System z for New Workloads

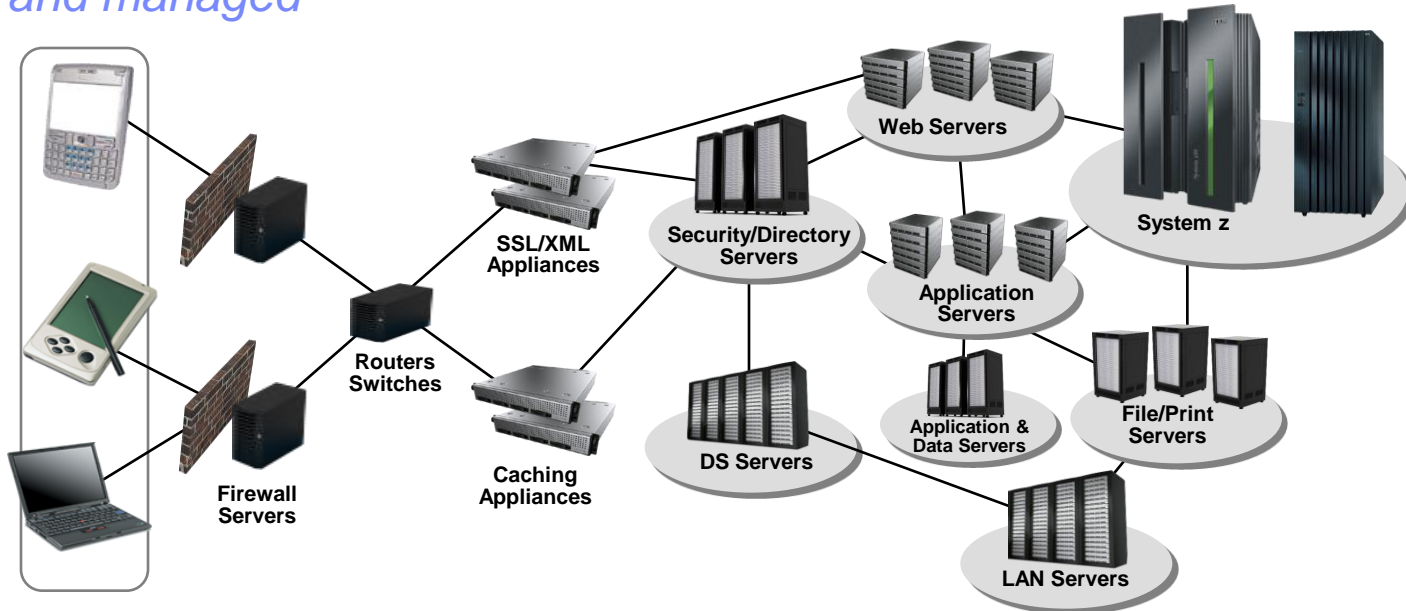
- Financial analytics - POC



# *Technical Trends and Directions for System z*

The following charts cover IBM's future direction and intent and are subject to change or withdrawal without notice, and represent goals and objectives only.

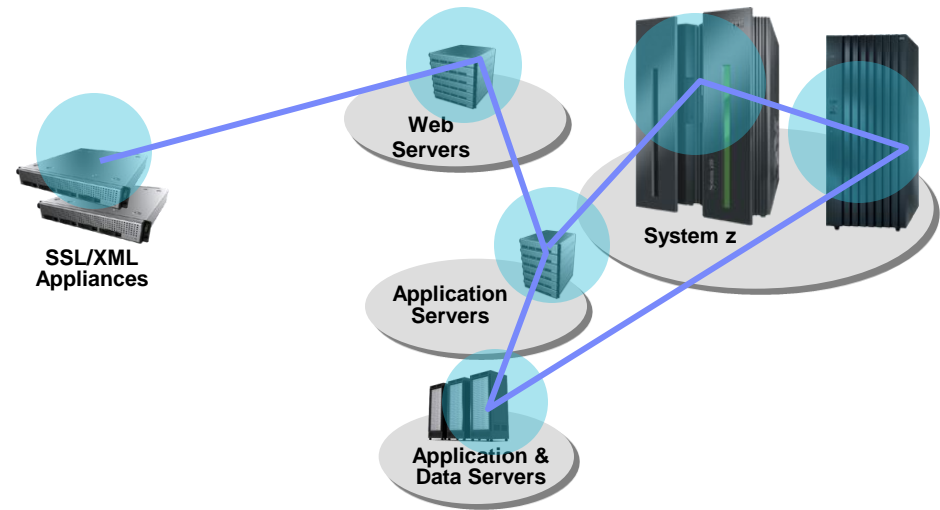
The IT model is shifting ... real-time event-driven workloads, richer content, and modular technologies alter the composition of *systems and how systems are deployed and managed*



- **Application software and middleware is becoming more platform agnostic**
- **Data availability, security, scalability requirements growing**
- **Real-time, event-driven processing is driving the opportunity for specialized acceleration & offload engines**
- **Multi-core/thread designs are becoming key drivers for system performance**
- *Platform Virtualization Capabilities are improving the efficiency of single purpose workload images*
- *Platform management software for Virtualization is emerging aimed at reducing cost and complexity and providing transparent quality of service to software hosted in the virtual image of today's compute-intensive applications*

The composition of today's data center introduces challenges in managing the delivery of critical business services to intended cost and service objectives

- **Complexity and fragility**
- **Increased management (labor) costs**
- **Increased power/cooling costs**
- **Reduced flexibility and responsiveness**
- **Quality of service issues**
- **Under-utilized capacity**
- **Inability to relate the management IT resources to business objectives**

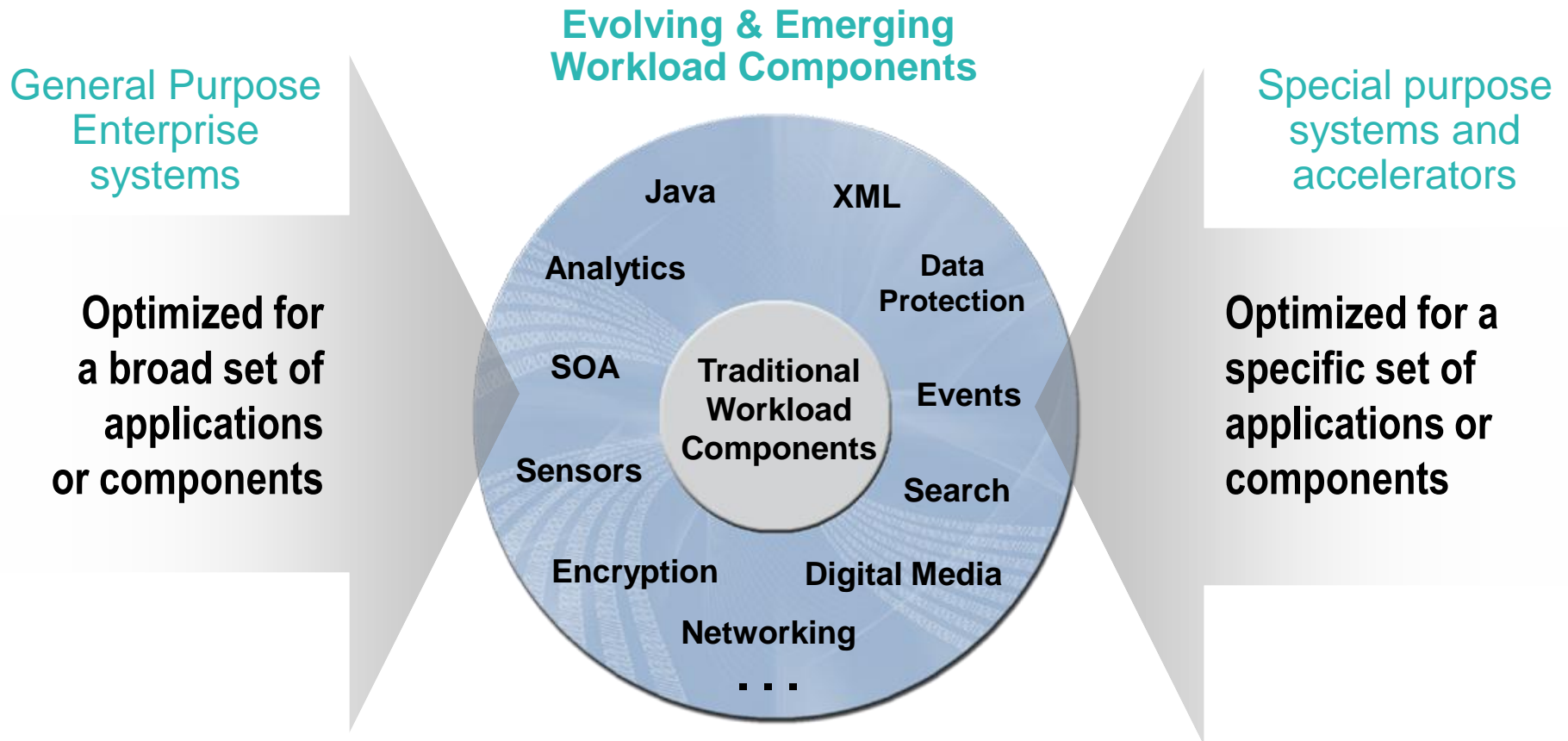


## Opportunity

- IBM System z and its evolution to a well managed, integrated, hybrid platform provides an opportunity to deliver enhanced function, and to further simplify, consolidate and reduce the costs of managing IT infrastructure
- The ability to integrate, virtualize and coherently manage the multiple and varied processing elements of a deployed business service, in accordance with stated business objectives, is the focus of this set of extensions to the System z platform.

# Emerging applications . . . with hybrid transactions

*Future objectives include complete application integration in an optimal fashion*

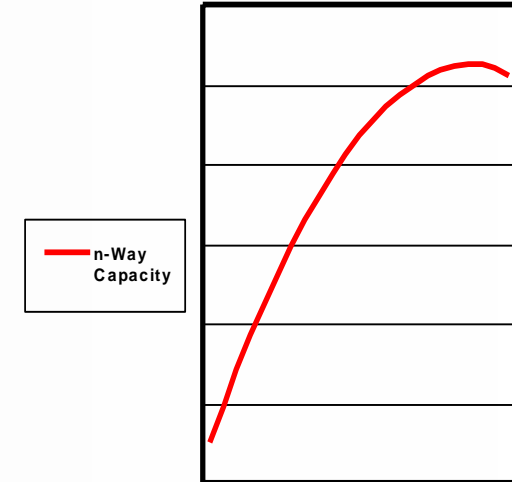
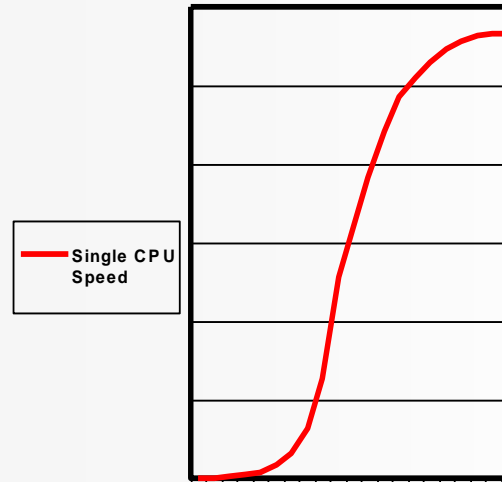


**Integration will be critical**

*Both General and Special Purpose capabilities needed because of increasing transaction variability*

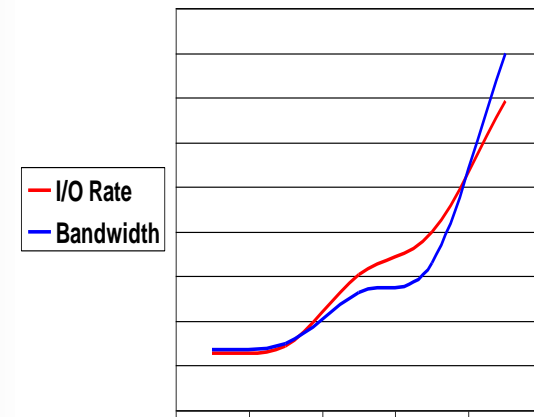
## Next: Coping with physical limits

- **The industry is hitting fundamental physical limits:**
  - Size
  - Speed of electromagnetic propagation
  - Heat transfer rates
- **Large CPU speed increases are a thing of the past, across the industry**
- **Capacity increases will increasingly come from higher n-way, more multithreading, and NUMA optimization**
- **Demand for lower latency will drive co-location of hybrid transaction processing elements**



*“In terms of size [of transistor] you can see that we're approaching the size of atoms which is a fundamental barrier, ....”*

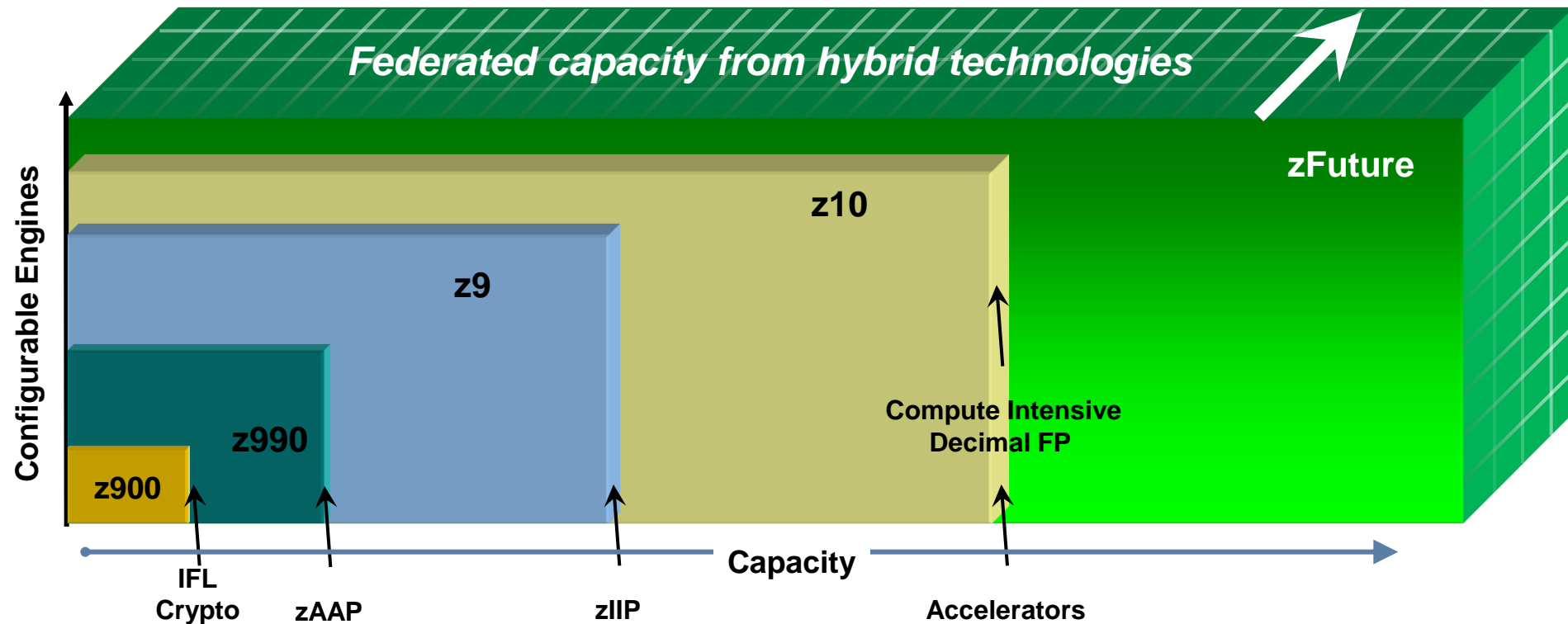
Gordon Moore, April 2005\*



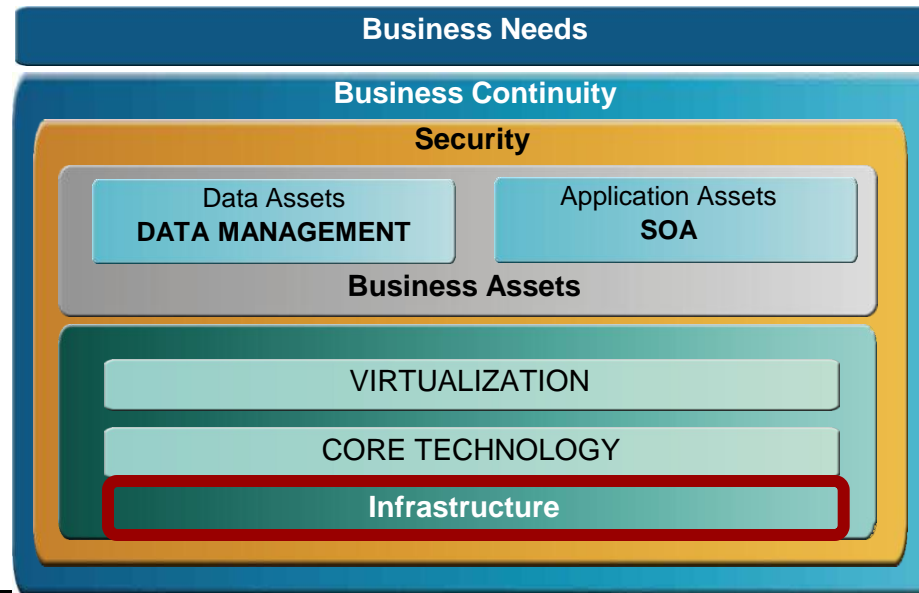
# Processor performance and future scalability

## *The business capabilities from leveraging the “z” dimension*

- Performance increase with enhanced engine capacity
  - Specialty Engines technology dividend
- z/OS image size will grow with Hardware
- Performance objectives for equivalent n-way configurations:
  - Traditional workload = 1.3x predecessor
  - New workload = 1.7x predecessor

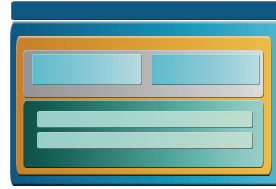


# System z Technical strategy: Core technology



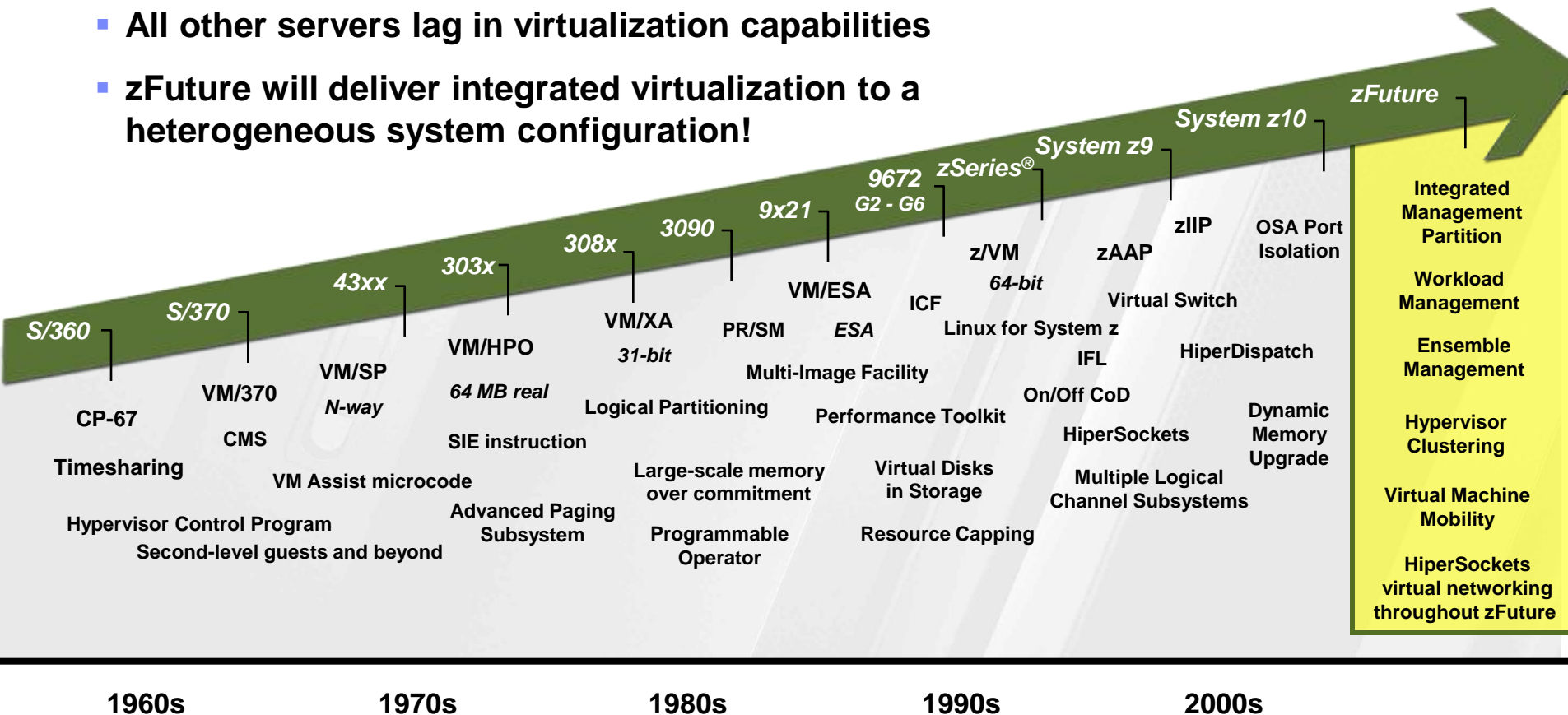
<i>Availability and Enterprise Resiliency</i>	<ul style="list-style-type: none"> <li>Auto-IPL *</li> <li>Basic Hyperswap*</li> <li>Sysplex Availability and Mean Time To Recovery*</li> </ul>	<ul style="list-style-type: none"> <li>Concurrent software maintenance*</li> <li>Predictive software failure analysis**</li> </ul>
<i>Simplification</i>	<ul style="list-style-type: none"> <li>Health and Migration Checks*</li> <li>z/OS I/O Auto-Configuration**</li> <li>PD Workbench**</li> </ul>	
<i>Economics</i>	<ul style="list-style-type: none"> <li>XML, IPsec, SDM, offload to zIIP and/or zAAP, zIIP-assisted HiperSockets, ISV zIIP exploitation</li> <li>60 LPAR support</li> <li>Policy-based capacity provisioning</li> </ul>	<ul style="list-style-type: none"> <li>Release-to-Release z/OS performance improvements*</li> <li>Industry-standard I/O attachment*</li> <li>zHybrid technologies**</li> <li>Chilled water cooling option**</li> </ul>
<i>Scale and Performance</i>	<ul style="list-style-type: none"> <li>64-way single image</li> <li>zFuture multithreading and single-system image* growth, with HiperDispatch improvements*</li> <li>Larger EAVs, support for all data types*</li> <li>64-bit programming extensions*</li> </ul>	<ul style="list-style-type: none"> <li>Latency Reduction*</li> <li>Accelerators*</li> <li>Support for significantly larger real memory per LPAR**</li> </ul>

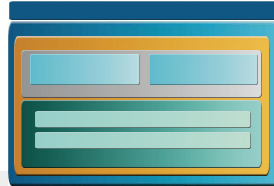




# zFuture: The next leap in virtualization

- Virtualization was pioneered and perfected on IBM mainframes
- System z continues to set the gold standard in virtualization
- All other servers lag in virtualization capabilities
- zFuture will deliver integrated virtualization to a heterogeneous system configuration!





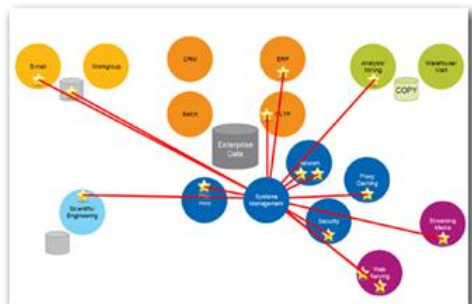
# System z ensemble

## System z Future

### System z Mainframe



### Integrated Systems Management firmware

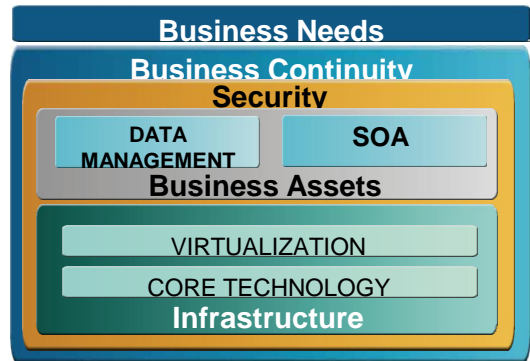


### Accelerators

- Extend and accelerate System z workloads
- Lower cost per transaction while improving application response time for CPU intensive applications

### Application Serving Blades

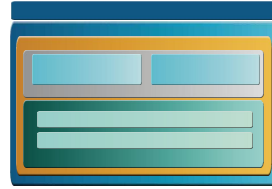
- Logical device integration between System z resources and application serving commodity devices
- Providing competitive price-performance and improved QoS for applications with a close affinity to mainframe data



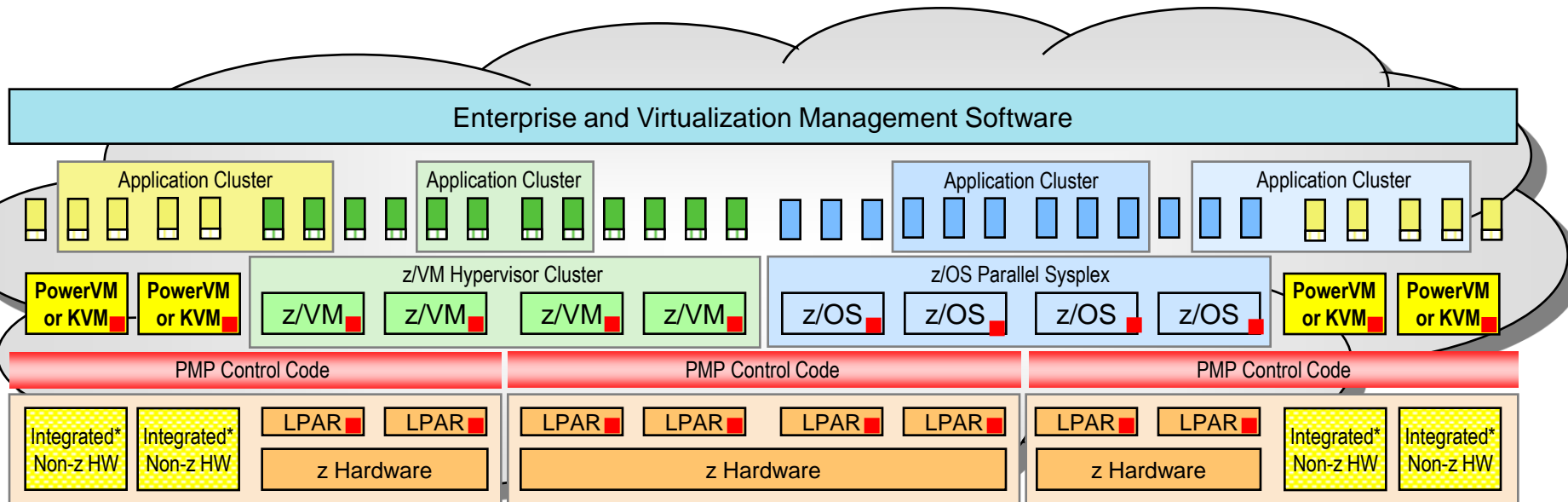
- Integrate, monitor, and manage multi-OS resources as a single, logical virtualized system
- Single WLM, Security, and System Management interface across all resources

# IBM multi-architecture virtualization – Conceptual view

## System z multi-system, federated Hypervisor configuration



- **The System z Platform Management Partition (PMP) will host a federation of platform management functions, including:**
  - Resource monitoring
  - Workload management
  - Availability management
  - Image management
  - Energy management
- **Integrates with hardware management and virtualization functions**
- **Controls hypervisors and management agents on blades**
- **Open integration to enterprise-level management software**



■ = Code that interfaces with Platform Management Partition (PMP)

\* E.g., Cell Broadband Engine, DataPower, Power Blades, x86\_64

# System z: The right technology... 45 years of market leadership And a clear roadmap to the future!



## IBM System z

The world's most powerful enterprise computing platform

- Improved price/performance
- 100s of Capacity choices for the right size server
- Business Resilience
- LOW COST OF OWNERSHIP**
- Leadership capabilities with IBM Systems software
- The future runs on System z and the future begins today

## World-Class Virtualization

Large scale consolidation for savings of up to 80% in total cost of ownership compared to distributed platforms

- Deploy servers, networks, and solutions fast
- Support for multiple operating systems
- Dynamically optimize resources according to business priorities



## Secure and Resilient

Mitigate the risk of security breaches

- Dedicated cryptographic processors
- Industry leadership capabilities and certification
- Where mean time between failure is measured in decades



## Just in Time Capacity

Permanent capacity for non-disruptive growth

- Temporary capacity for fluctuating workloads
- Interim capacity for continued operation
- Policy based automation capabilities
- Offerings can be replenished dynamically

