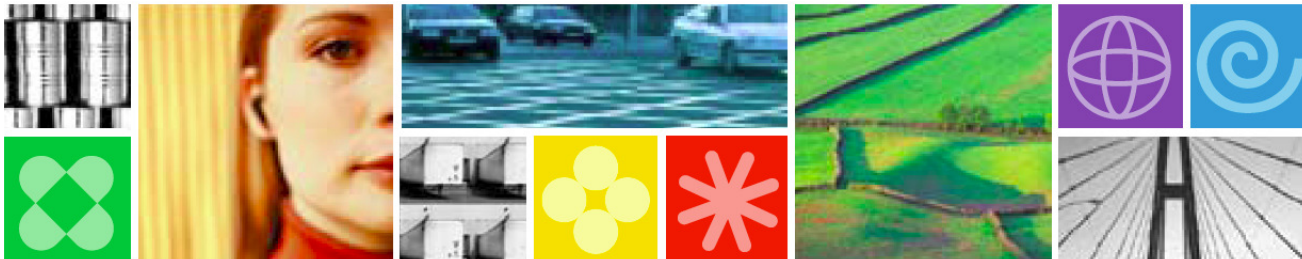




# *Security in a Distributed Environment*

## *The role of the Mainframe*

*Jim Porell*  
*IBM Distinguished Engineer*  
*IBM System z Business Development*





## Cross Domain Risks

- LAN and Network Security
- **Secure Sign in**
- **Cross Domain Authentication**
- **Self Signed Certificates**
- **Certificate Management**
- **Data privacy**
  - Developers
  - PII data
- **Abhorrent behavior**
- **Insider Theft**
- **Forensics**
- **Prevention**

### ☐ Transaction processing

- Point of sale
- Claims processing
- Credit/Debit/Transfer
- Working off an operational data store (ODS)

### ☐ Data Mining/Data warehouse

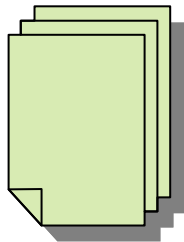
- Batch operations – many times not on the operational data store
- Looking for new business opportunities

### ☐ Operational Risk (OR)

- Leverages the data base
- Originally, it was also using a copy of the ODS for detection purposes
  - After 9/11, this proved to be inefficient. Fraud occurs during the batch window
- Now OR is more preventative, so it must work off of real time data
  - Additions to any OR database must also be considered in real time vs batch



# Security on System z: Reducing risk for the Enterprise



Basic Insurance Policy  
\$100,000 Liability

Basic Security: System z  
RACF



Rider: Excess replacement for valuable items

Data Encryption services  
Enterprise Key mgt



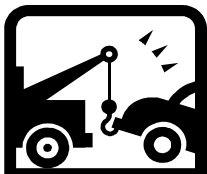
Rider: Excess medical coverage

Identity Management



Rider: Unlimited vehicle towing

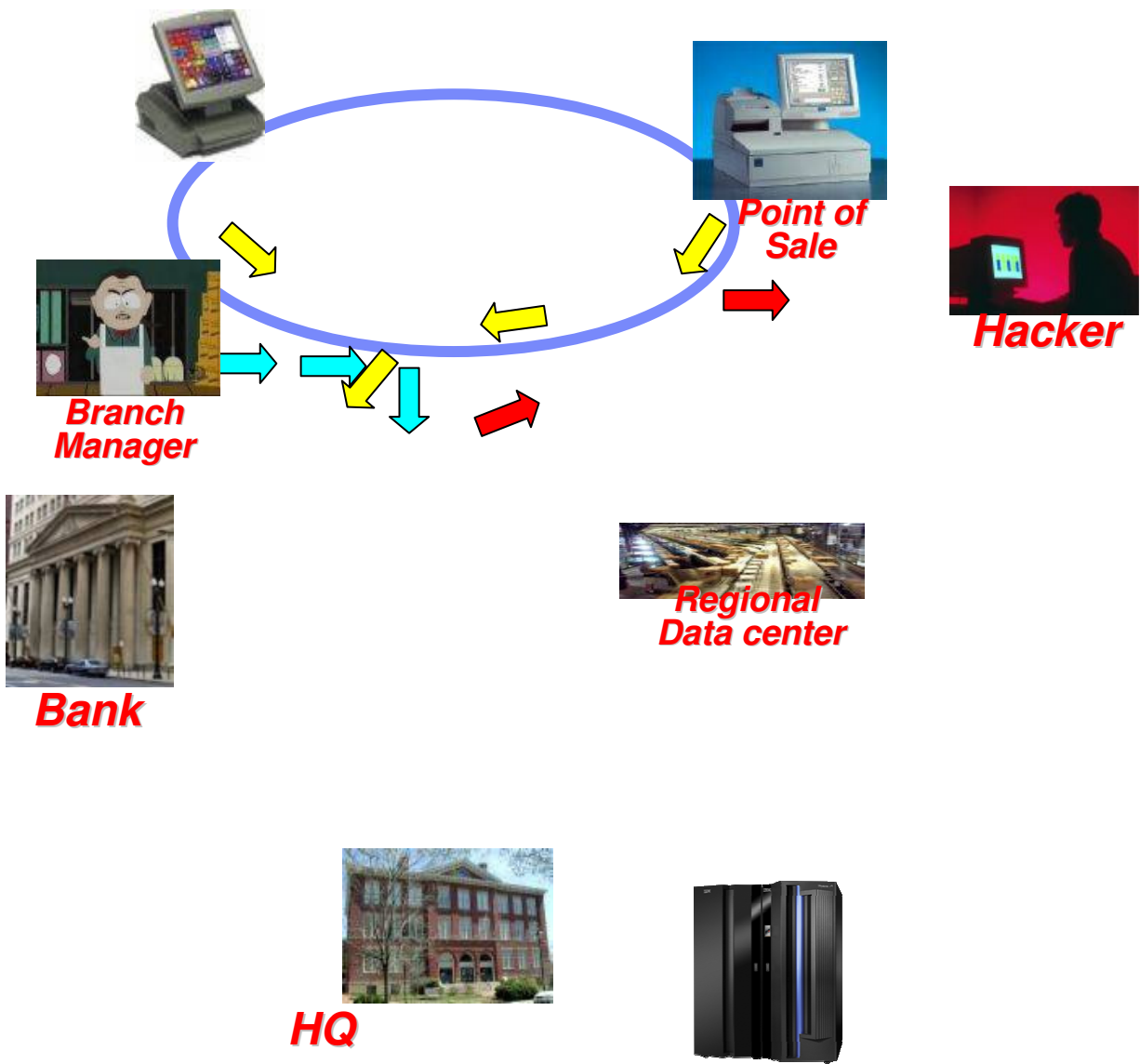
Compliance Reporting



Rider: Excess liability insurance \$3,000,000

Fraud Prevention,  
Forensics and Analytics





ERROR: stackunderflow  
OFFENDING COMMAND: ~

STACK: