

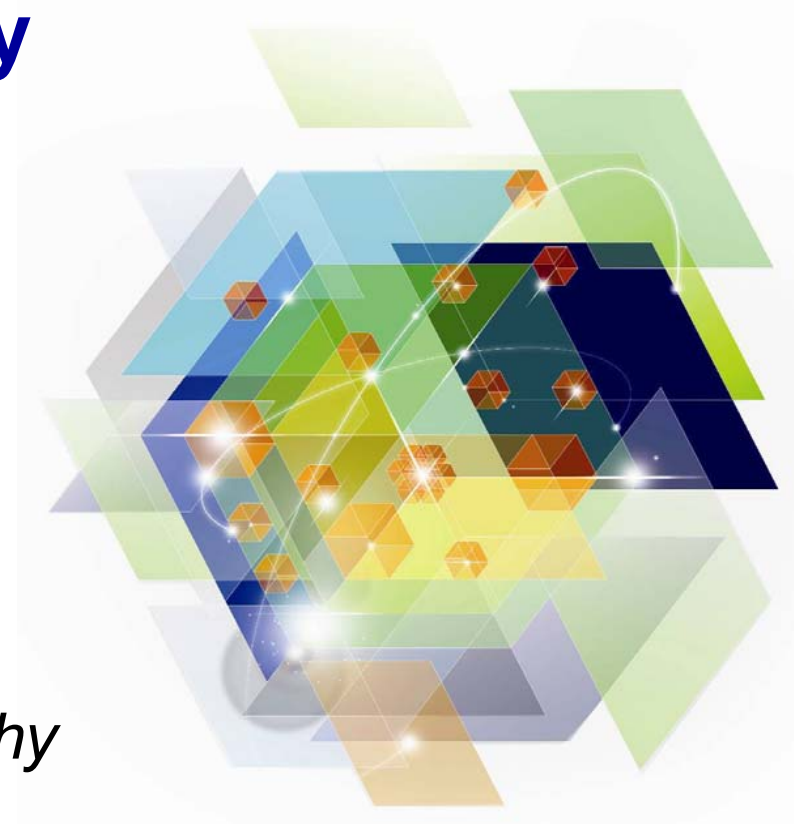


# IBM System z Technology Summit

Presenter – Dennis Weiland or Leigh Compton

CICS Architecting for your future – *why CICS matters to you*

Date: 1Q 2012



# Organizations must

- *Sell new product lines to grow revenue and profit*
  - *Rapidly address new market opportunities and customer expectations – delivering **personalized services** with speed, flexibility and integrity*
  - *Shift resources from “running IT” to transforming the business*
1. Leverage **best practices** and expertise from a broader range of sources
  2. **Integrate** and optimize **merged** entities resulting from **acquisitions**
    - Constantly **innovate** and optimize **business processes**, adding both rigor and flexibility
    - Break down organizational and **application silos** to embrace rapid, proactive change
  3. Tap into **information** and activity across the entire network – including sensors, mobile, cloud, and social media – to serve customers better, resolve problems and operate more efficiently
  4. **Predict** problems and issues before they occur
  5. Implement new **mobile** services to better serve customers

# Agenda

- Issues facing Architects and Developers
- Key Architectural Principles
  - Best Practices
  - Integration
  - Connectivity
  - Predict problems
- Mobile services
- Demo
- Summary
- References

# Issues facing Architects and Developers

- Leverage Best practices
- Integration
- Tap in to Information across applications/systems
- Predict problems
- Implementing mobile solutions

## Best Practices

- CICS Explorer
- OSGi
- Java 64 Bit
- Axis2
- Threadsafe
- CICS Developer Trial



New

# Some Key Architectural Principles

Architectural Principle	Relevant technology
Use industry standards	Web services, OSGi
Define clear interfaces	Web services, REST, Atom
Componentisation	OSGi, SCA
Reuse, not rewrite	Event Processing, WSRR, CICS IA
Loose coupling	Web services, Event Processing
Design for high availability	Parallel sysplex, CICSplex SM workload management, no affinities
Code for performance	Threadsafe
Fit for purpose	Language choices e.g. Java Platform choices i.e. CICS TS Connectivity choices e.g. CICS TG

**New!**

# IBM CICS Explorer® V1.1

Develop  
Test  
Etc

**RDz**

Configuration  
Status  
Control, Test

**MQ**

Status  
Situations  
Topology

**XE**

Session and user  
views, Configuration,  
Broadcast, User and  
Admin commands

**ISM**

Daemon & Connection  
Status & Test

**TG**

**New!**

Threadsafe, File, CPU,  
Response Time,  
Statistics, Alerts,  
Graphical and  
Sheet views

**PA**

Deployment,  
Discovery,  
Visualization, Cloning,  
Automation & Control

**DA**

Manipulate, browse  
z/OS data sets, z/FS,  
MQ

**FM**

CICS, IMS, DB2,  
& z/OS  
Abend Reporting  
& Diagnosis

**FA**



CICS, IMS,  
DB2, & z/OS  
Application  
Debugging

**DT**

CICS, IMS, DB2,  
& z/OS  
Observation Requests  
& Reporting

**APA**

Execution Tree  
Dependencies  
Queries  
Command Flow

**IA**

CRUD/Install  
History, Audit  
Backout  
Search, Compare

**CM**

CRUD/Install, Control  
Filter, Sort, Topol  
Events, ATOM. Java.  
z/OS, Txn Tracking,  
WLM

**SM**

**Enhanced!**

[ibm.com/cics](http://ibm.com/cics)  
[ibm.com/cics/tools](http://ibm.com/cics/tools)  
[ibm.com/cics/explorer](http://ibm.com/cics/explorer)

SM	IBM Session Manager
IA	CICS Interdependency
PA	CICS Performance Analyzer
CM	CICS Configuration Manager
DA	CICS Deployment Assistant
TG	CICS Transaction Gateway
ISM	IBM Session Manager

## CICS TS

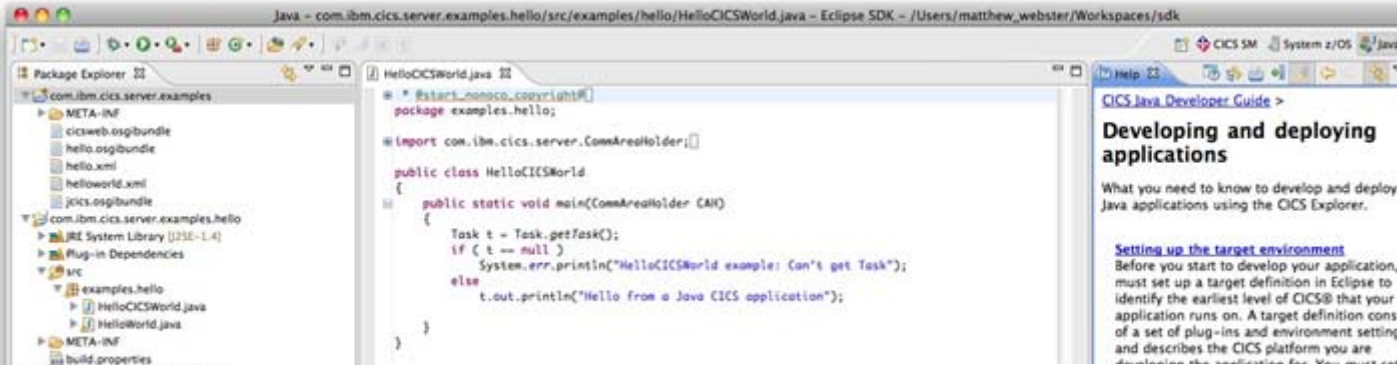
APA	Application Performance Analyzer
FA	Fault Analyzer
DT	Fault Analyzer
FM	Debug Tool
	File Manager
MQ	WebSphere MQ
XE	OMEGAMON XE for CICS
RDz	Rational Developer for System z

## Support for Java 6 64-bit JVMs

- CICS TS supports Java 6.0.1, 64-bit
- Allows many more JVMs and larger heap sizes
- New OSGI runtime and tooling provides improves lifecycle and management support
- Rebuild any Native DLLs as AMODE(64)
- JVMServer provides modern scalable runtime for CICS together with Eclipse based tooling environment
  - OSGi,
  - Axis2,
  - CICS Dynamic Scripting,
  - Container for compute grid (CN11)



# OSGi support in CICS



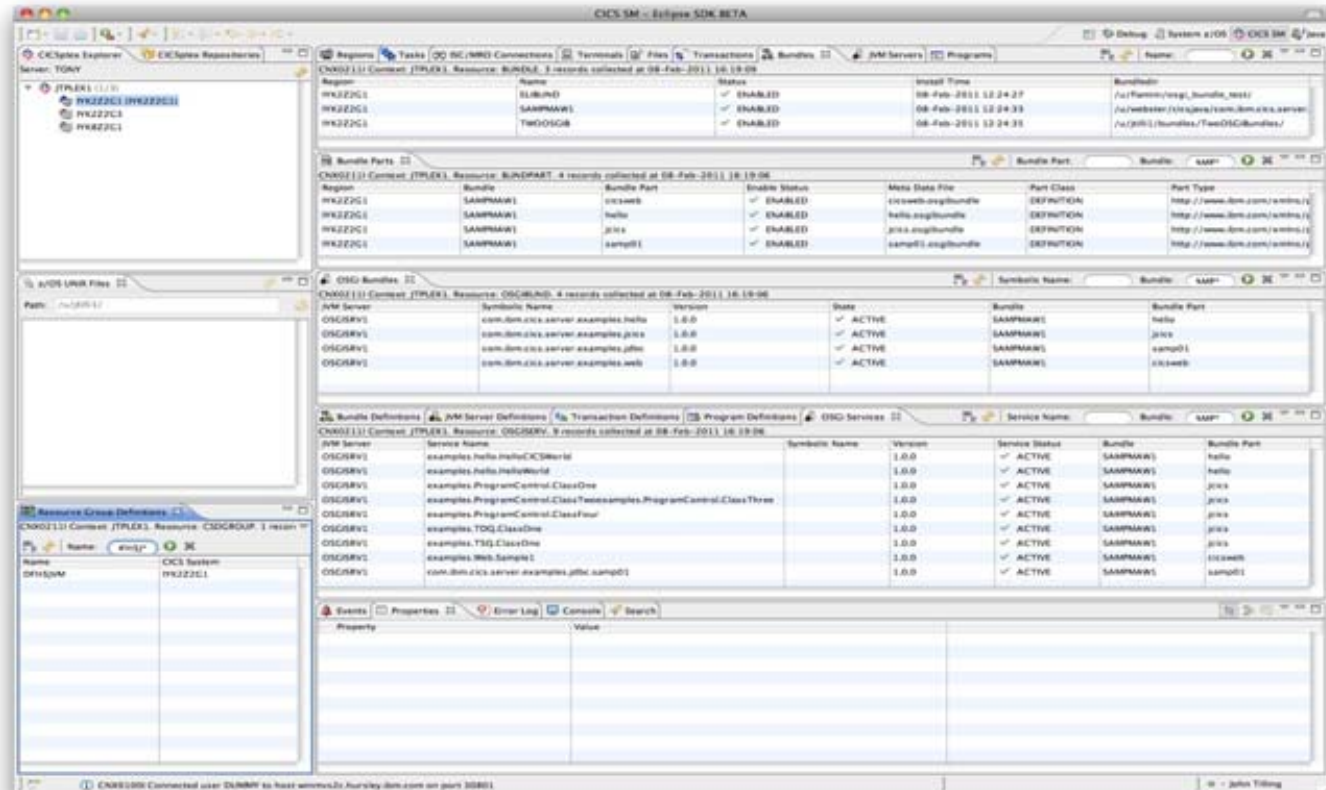
CICS Explorer SDK

**Developing and deploying applications**

What you need to know to develop and deploy C Java applications using the CICS Explorer.

**Setting up the target environment**

Before you start to develop your application, you must set up a target definition in Eclipse to identify the earliest level of CICS® that your application runs on. A target definition consists of a set of plug-ins and environment settings and describes the CICS platform you are developing for.

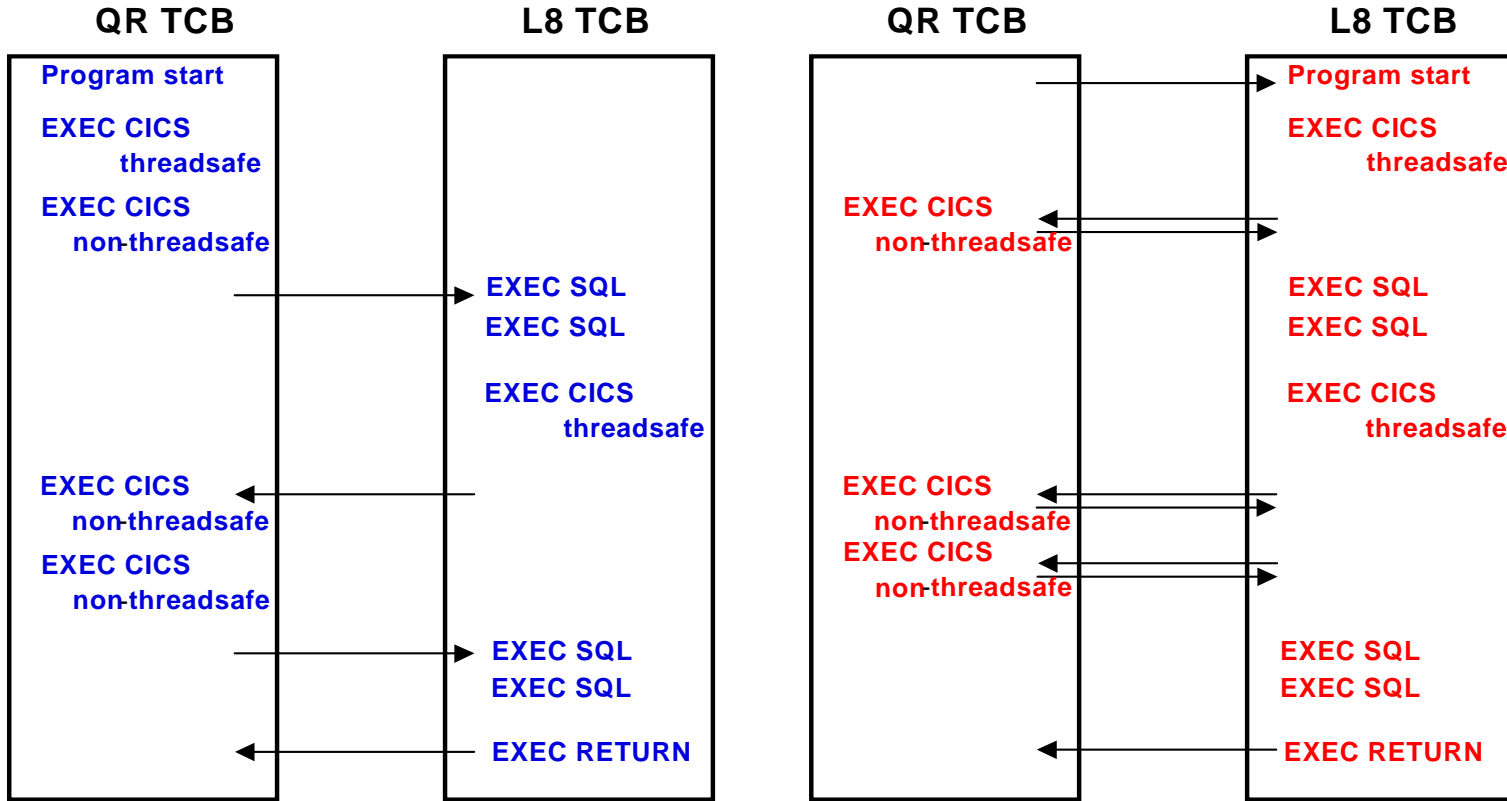


OSGi bundles and services in CICS Explorer

# Axis2 Java Web services

- **Based on Axis2 technology**
  - Java SOAP pipeline
    - Alternative to the existing CICS Web Services pipeline
  - Similar support to existing CICS Web services pipeline
    - Provider (inbound) and requester (outbound) applications
    - WS-Addressing and MTOM/XOP
  - Runs within CICS JVM server environment
    - Can access existing CICS programs files etc. using JCICS class library
- **Advantages**
  - Complex XML parsing can off-loaded to zAAP
  - No need to use DFHWS2LS for top-down (WSDL to COBOL) mappings
  - Java components can use Java Web services interfaces such as JAX-WS
  - Ability to develop pure Java Web Services applications
  - **Note:** WS-Security not available for Axis2 WS provider applications

# CICS TS V4.2 Scalability Enhancements



The program for this transaction is defined  
**CONCURRENCY(THREADSAFE)**  
 API (CICSAPI),  
 EXECKEY(USER) or EXECKEY(CICS)

The program for this transaction is defined  
**CONCURRENCY(REQUIRED)**  
 API (CICSAPI),  
 EXECKEY(USER) or EXECKEY(CICS)

## CONCURRENCY(THREADSAFE) vs CONCURRENCENCY(REQUIRED)

# CICS Developer Trial



Announced Jan 24<sup>th</sup> 2012, available from Jan 27<sup>th</sup>

- No charge trial, fixed expiry date
- Does not start SVC period
- For non-production environments
- Available through IBM ShopzSeries
- PID 5655-CIC

Based on CICS TS V4.2 (with restrictions)

- Performance
- Capacity
- License

<https://www.ibm.com/developerworks/connect/cicsdev>

# GENAPP – SupportPac and Redpaper

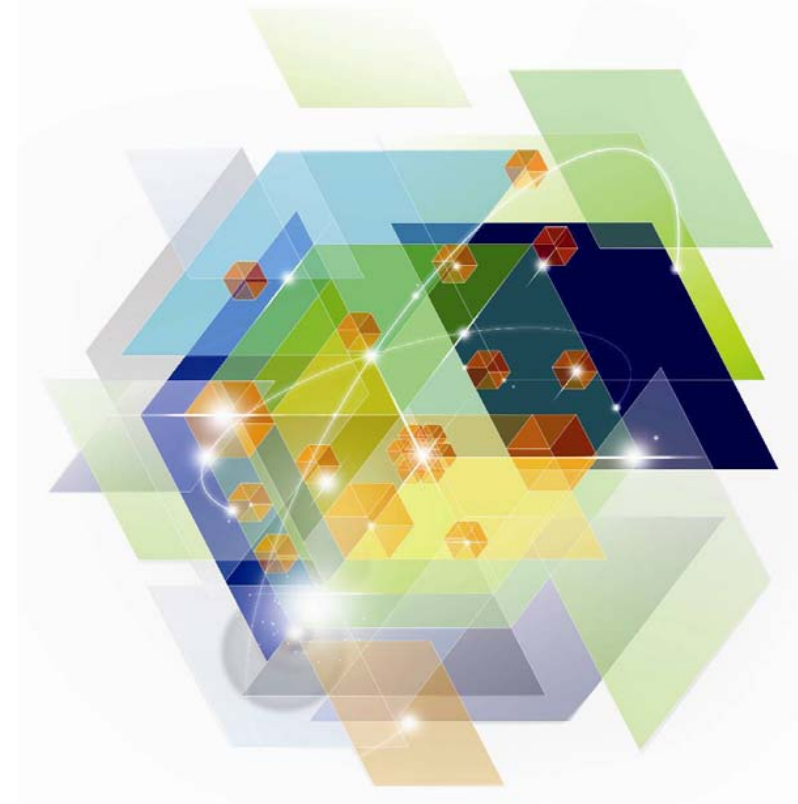
- **GENAPP is available to customers as SupportPac CB12, at no extra cost**
  - Download from <http://www-01.ibm.com/support/docview.wss?rs=1085&uid=swg24031760>
- **There is a paper based on GENAPP with scenarios in this new IBM Redpaper**
  - Download from <http://www.redbooks.ibm.com/abstracts/redp4824.html?Open>



## Learn How to Perform Popular Business Solutions with the CICS



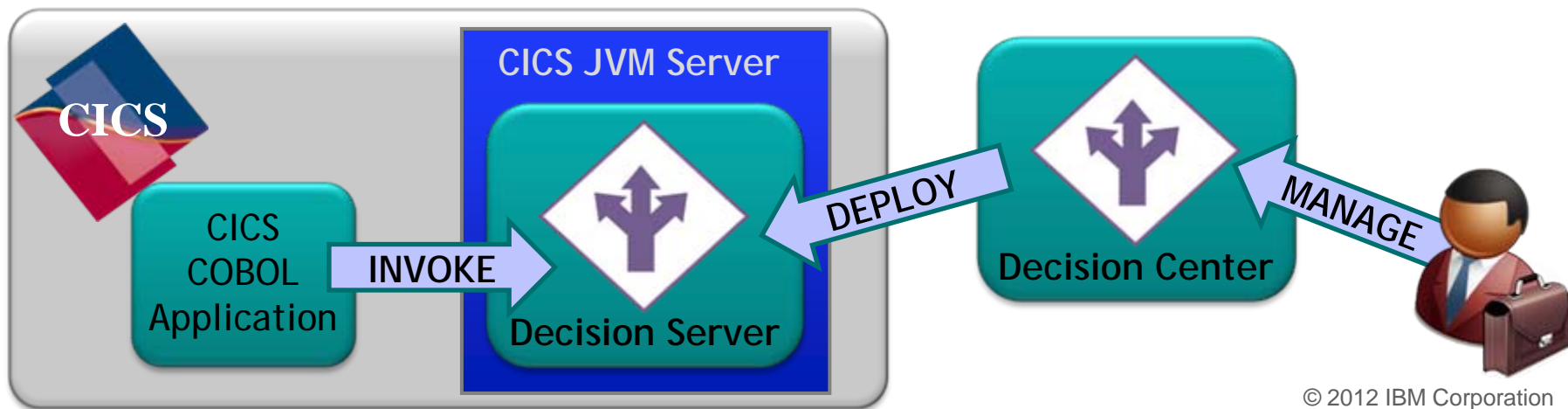
# Integration



# WebSphere Operational Decision Management & CICS

## *Externalize embedded business rule logic & execute within CICS*

- *Gain business agility with existing and new CICS applications*
  - Manage decision logic on a separate lifecycle to application code
  - Ability to react to changes in a fast paced, competitive marketplace
- *Lower the cost of maintaining your business applications*
  - Improvement operational efficiency and total cost of ownership
- *Consistent Decision evaluation across the enterprise*
  - Author decision rules once and deploy to multiple systems on z/OS and distributed
- *Optimized decision execution*
  - Highly efficient rule execution engine
  - Local optimization of Decision Server within the CICS JVM Server environment



# Events from CICS TS V4 with WODM

Event Sources

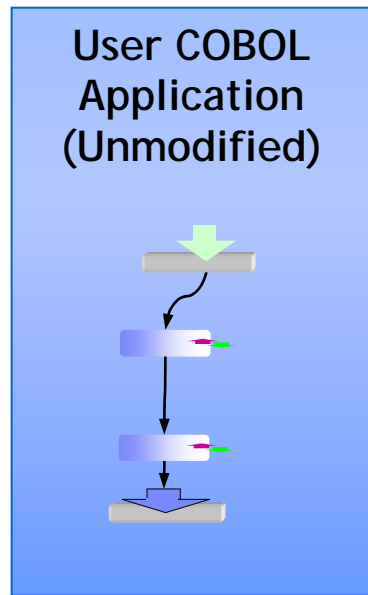
Event Emission

Event Processing

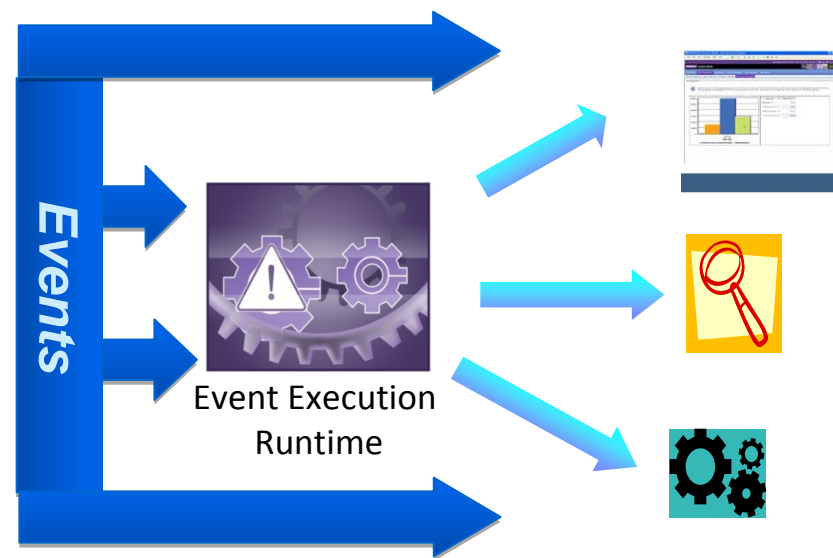
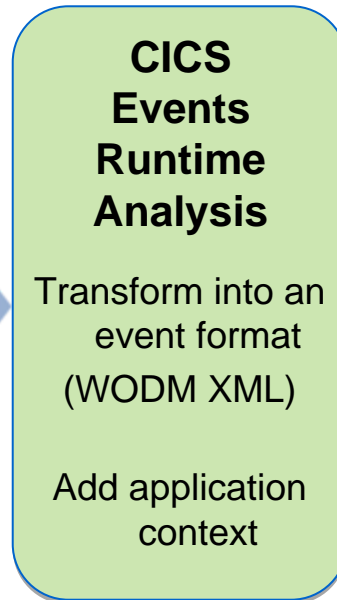
Business Action

*CICS TS V4*

*WODM V7.5*



Events captured by CICS runtime



*CICS Events help you to*

- *Observe business processes*
- *Recognize suspicious activity*
- *Drive new processing*



# Everyone wants to Lower The Cost Curve

## How?

- Make **reuse** a fundamental tenant of application development
- Speed delivery by **dramatically reducing need to write code**
- Support **self-service development**, freeing up central IT to work on more strategic initiatives

Cost Per Application

Traditionally Developed Applications

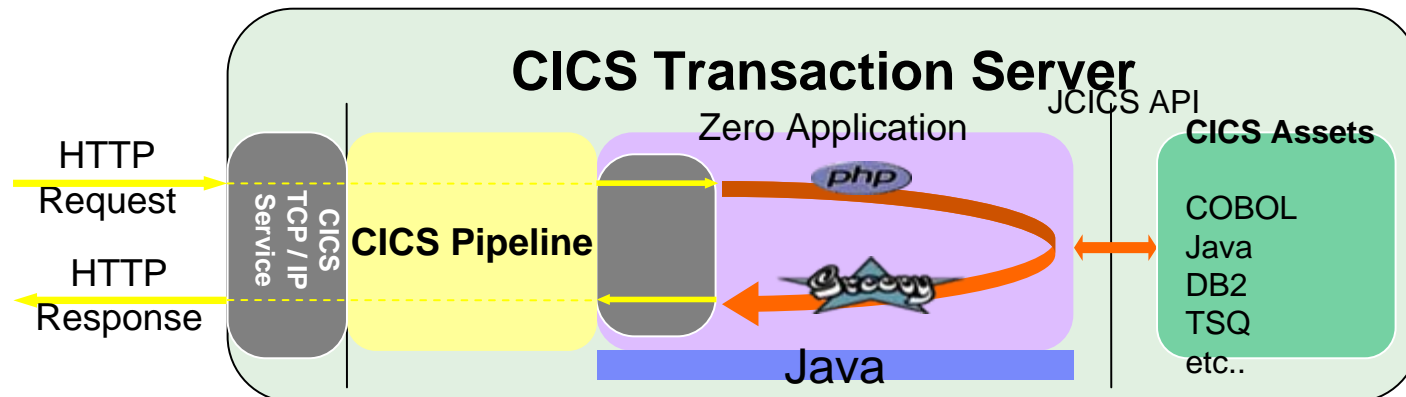
A new method is needed to lower cost

Mashups

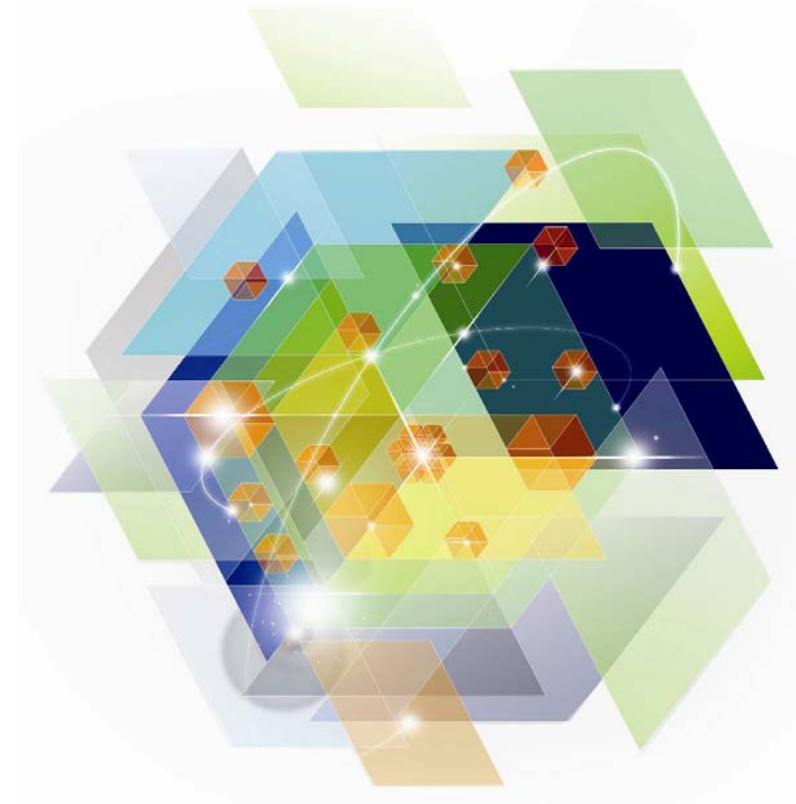
Number of Applications / Time

# CICS TS Dynamic Scripting

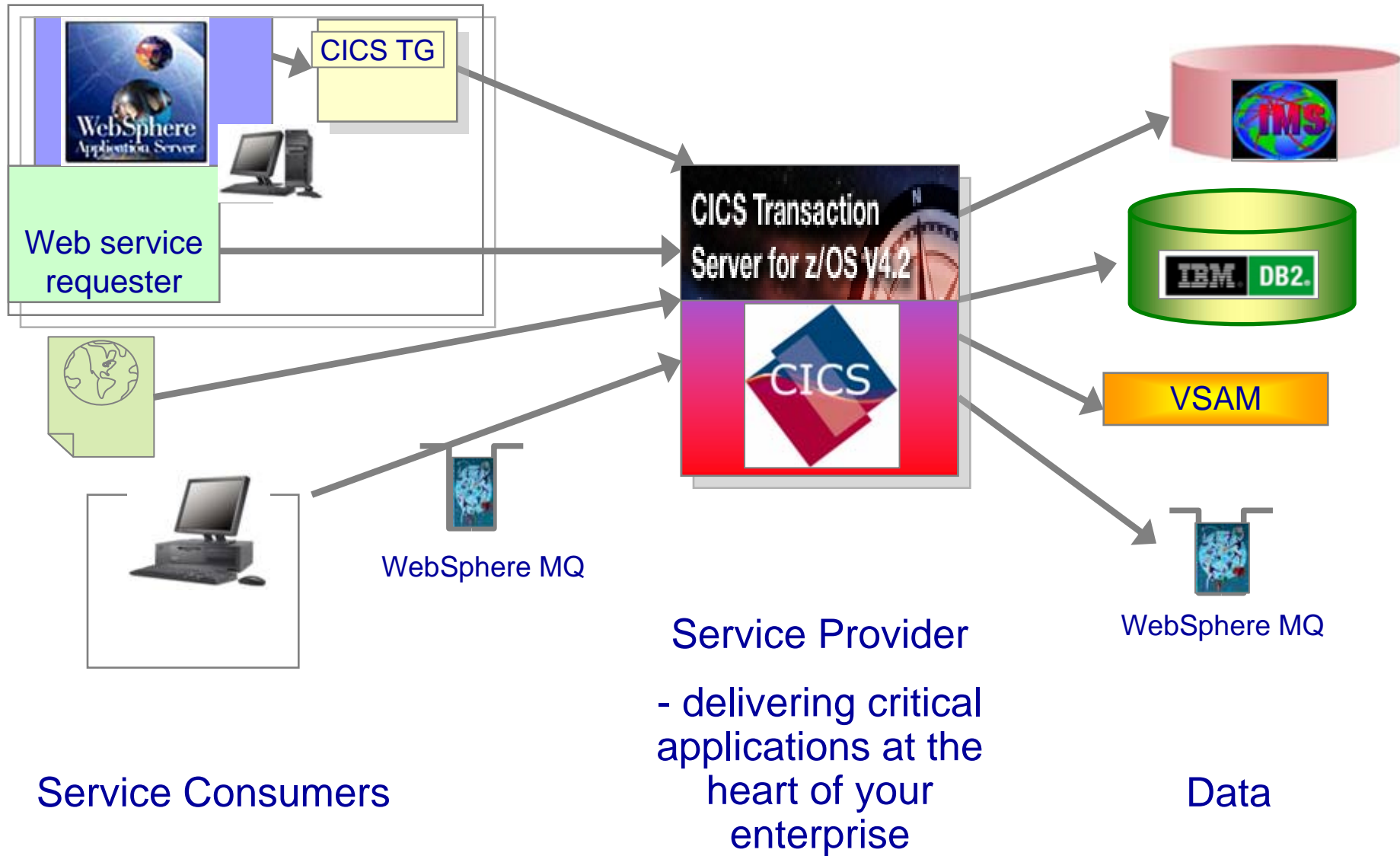
- Integrates Project Zero technology into CICS TS V4, for a robust environment for PHP and Groovy situational reports, dashboards, and web feeds
- Helps meet the long tail of application demand and exploit business opportunities, by rapidly creating and deploying situational applications which access CICS assets, while complying with key IT processes like manageability, scalability, and security
- Feature Pack is built on scalable CICS TS V4 JVM server technology
- Quickly** try out new business ideas, prototyping, build productivity applications like reports, dashboards, and widgets, or application front-ends for IT and Line of Business users.



# Connectivity



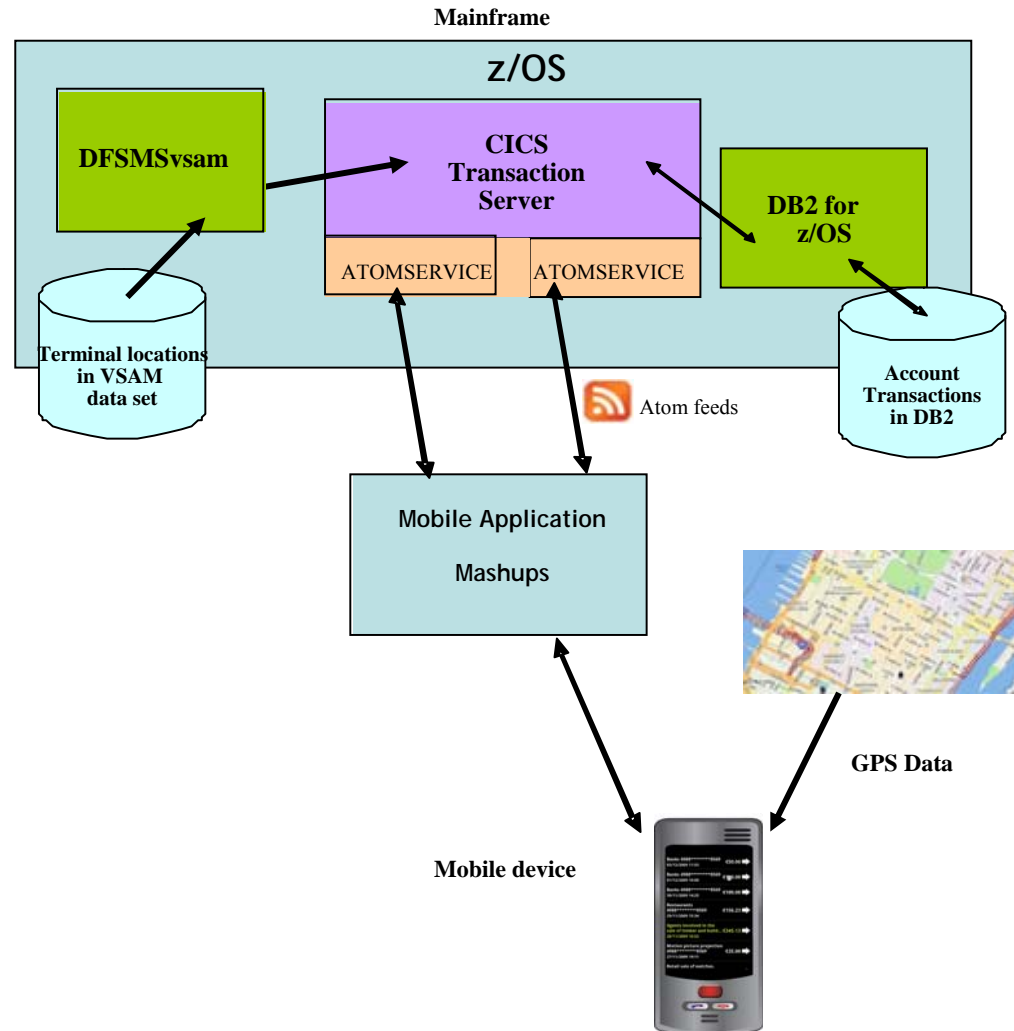
# CICS and connectivity



# Consumable account information using Atom feeds from CICS

Mobile application which provides added value to customer

- View account data
- Flag unusually large transactions
- Find location of nearest ATM
- Mashup of where transactions took place together with location of mobile device at the time
- etc.



# Define clean and clear interfaces

## Motivation

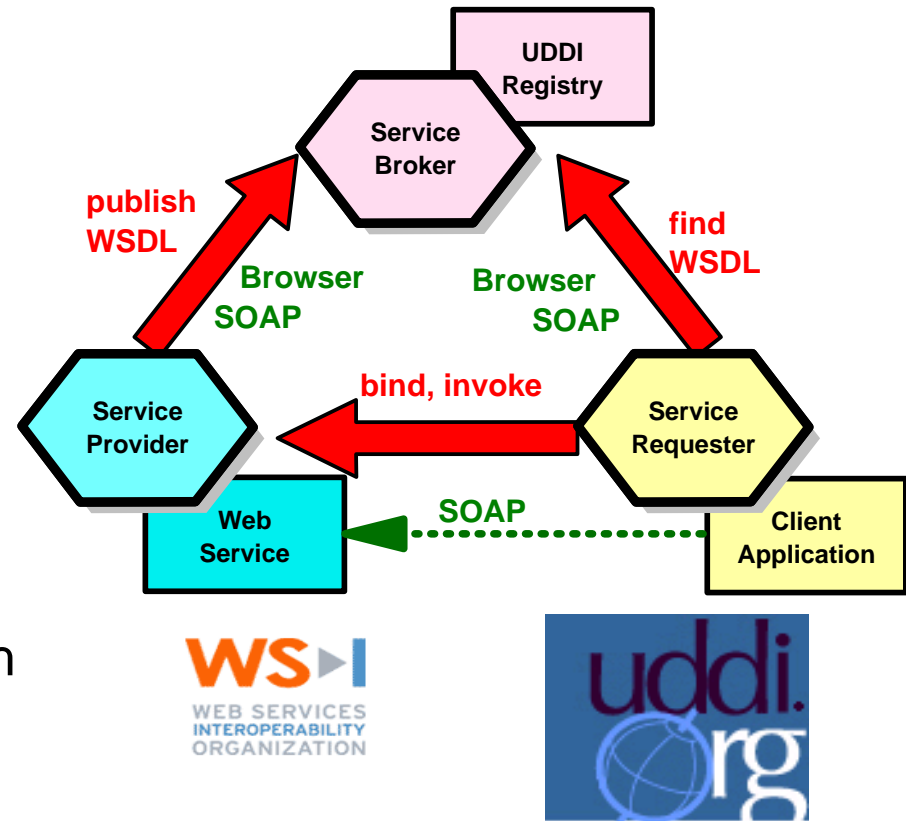
- Clarity of function provided
- Easy to invoke and use
- Easy and transparent to change underlying implementation
- Encourages a structured architecture

## Supporting technologies

- Web services
- RESTful services
- Atom feeds
- Dynamic Scripting

# Web Services: Definitions

- **Architecture for**
  - Application to application
    - Communication
    - Interoperation
  
- **Definition:**
  - Web Services are **software components described via WSDL** that are capable of being accessed via **standard** network protocols such as **SOAP** over **HTTP**
  
- **WS-I.org (Web Services Interoperability Organization):**
  - An organization to ensure interoperability



The entire industry is agreeing on one set of standards !!

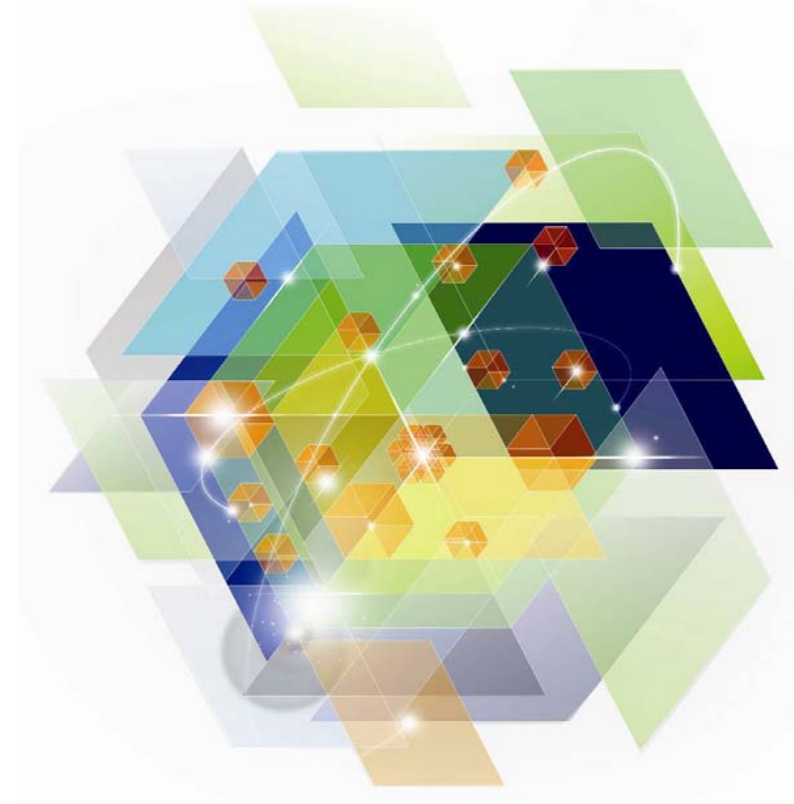
# RESTful services

- **REST**
  - **RE**presentational **S**tate **T**ransfer
    - Architectural model on which the World Wide Web is (and always has been) based
  
- **Principles of REST**
  - Resource-centric approach
  - All relevant resources are addressable via URIs
  - Uniform access via HTTP – GET, POST, PUT, DELETE
    - ... all the verbs you'll ever need
  - Content type negotiation: retrieve alternative representations from same URI
  - Lightweight data transfer – from Web browser or any HTTP client or server
  
- **“Clean and meaningful URLs”**
  - For everything
  - e.g. a file, a database, a CICS TS queue....
    - or a single record within each resource
  
- **Light reading:** <http://www.ics.uci.edu/~fielding/pubs/dissertation/top.htm>





# Predict Problems



# The Role-Based CICS Event Workflow



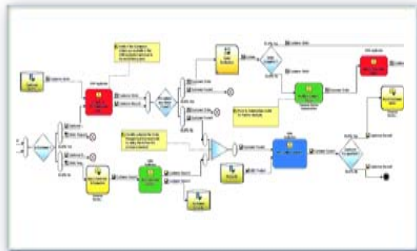
**LoB  
Manager**



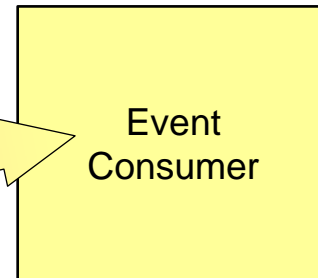
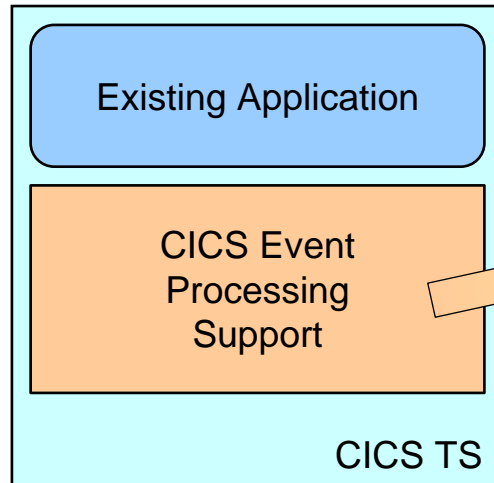
**Application  
Analyst**



**Systems  
Programmer**

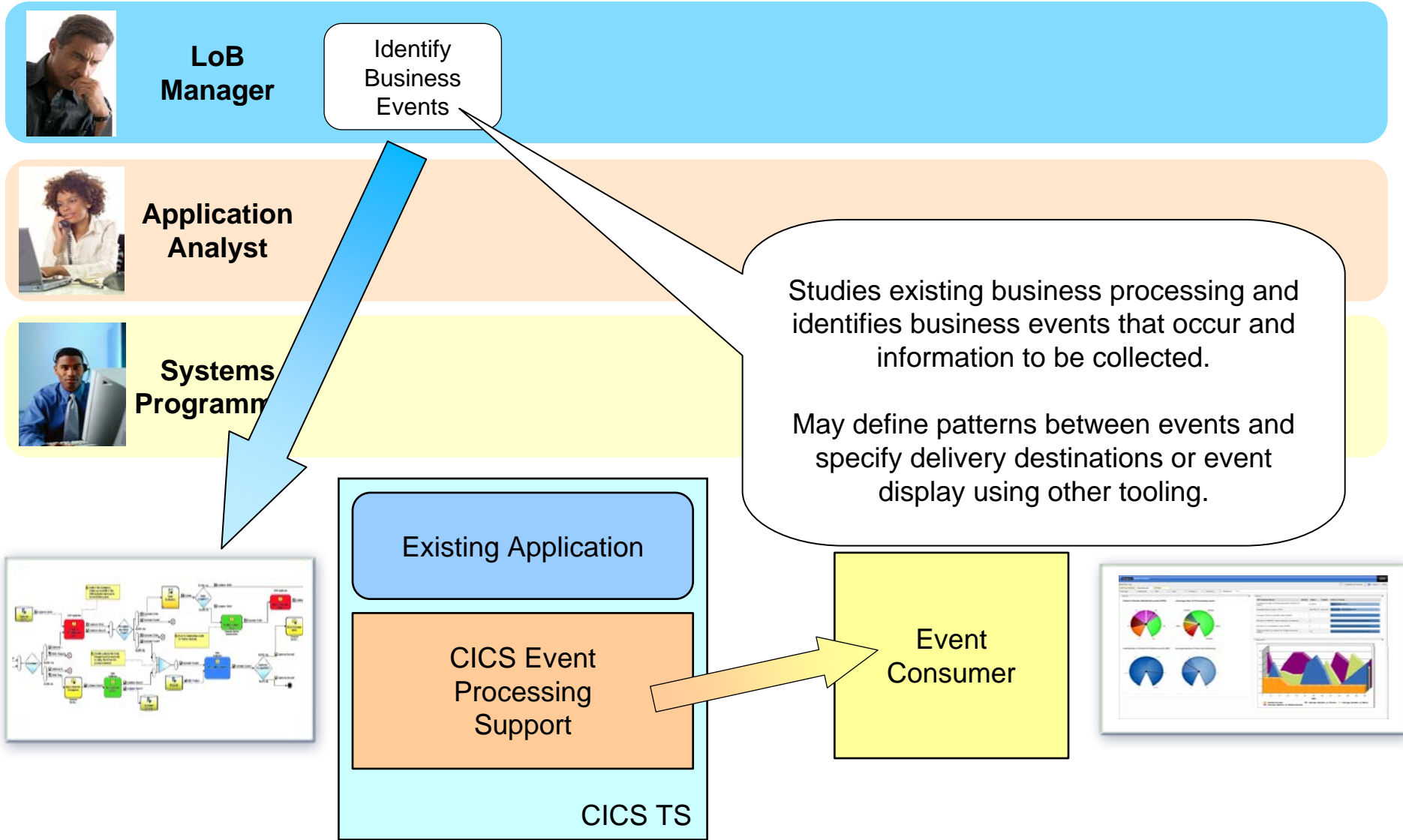


Business Modeler

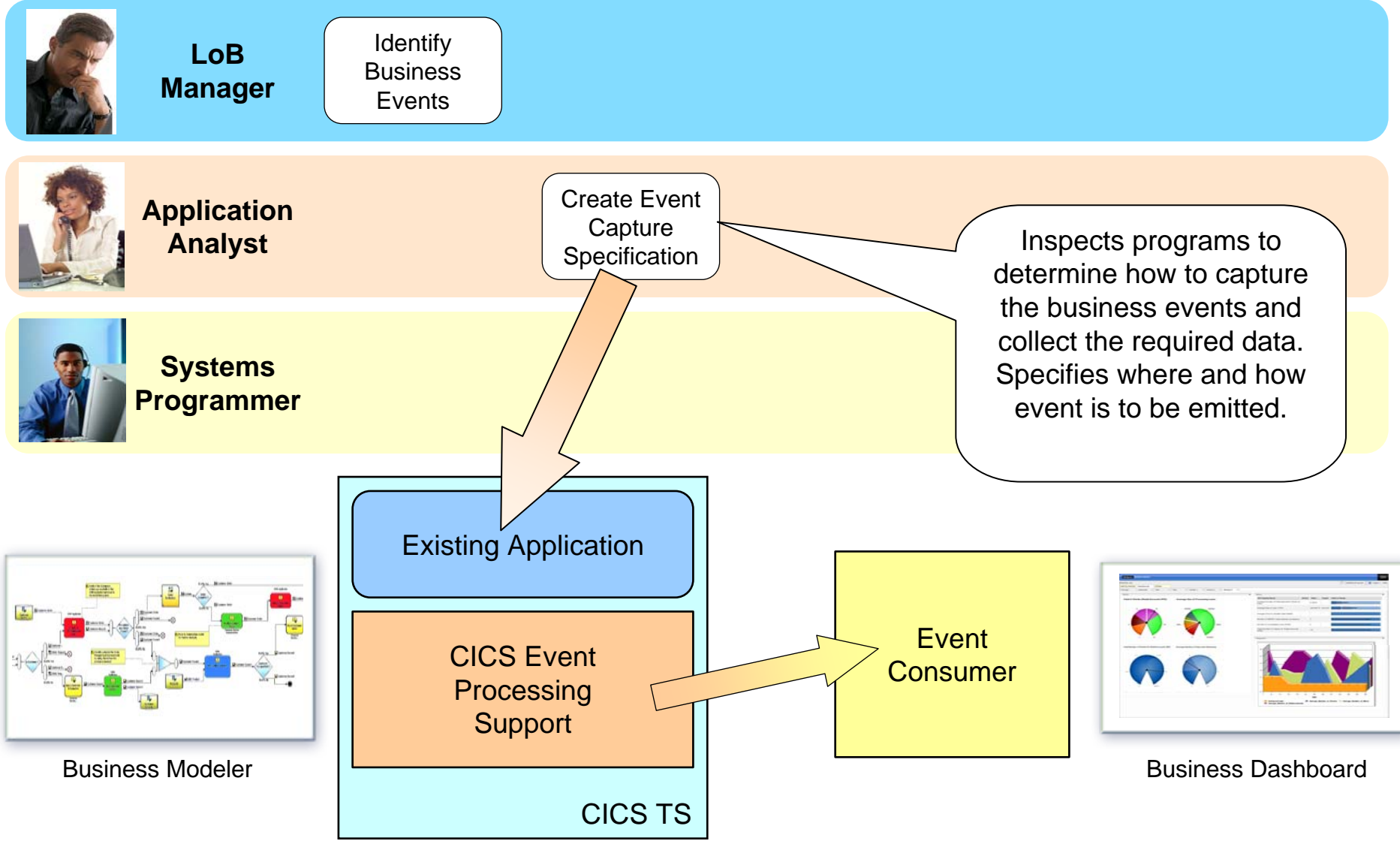


Business Dashboard

# LoB defines the business events



# Application Analyst identifies events in application



# Systems Programmer configures the infrastructure



**LoB Manager**

Identify Business Events



**Application Analyst**

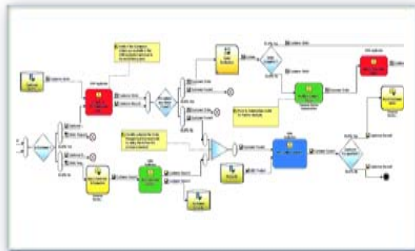
Create Event Capture Specification



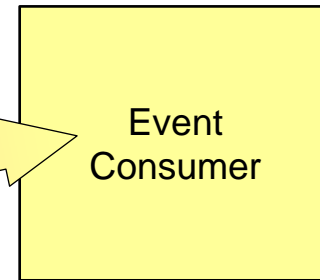
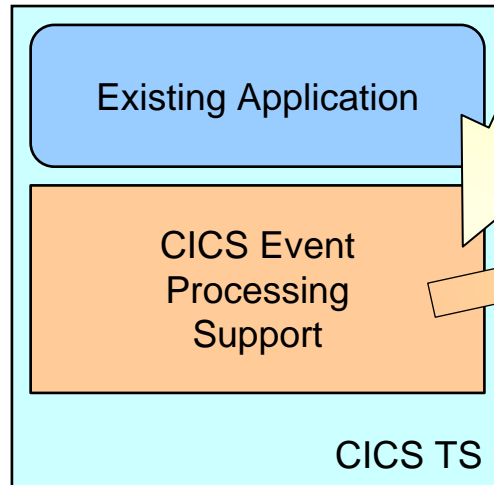
**Systems Programmer**

Deploy Events

Specifies format and destination for the captured events.  
Defines CICS resources to deploy the events

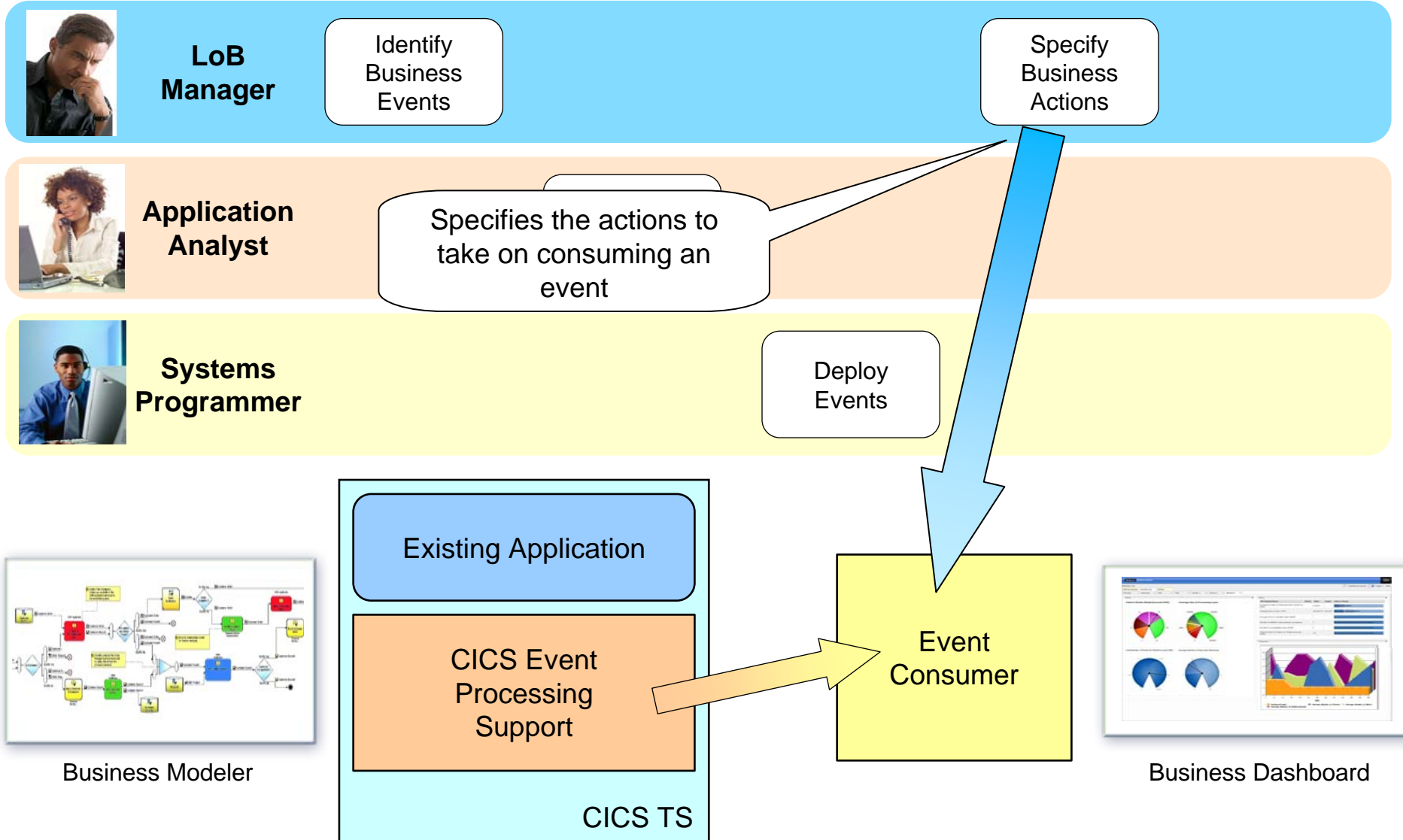


Business Modeler

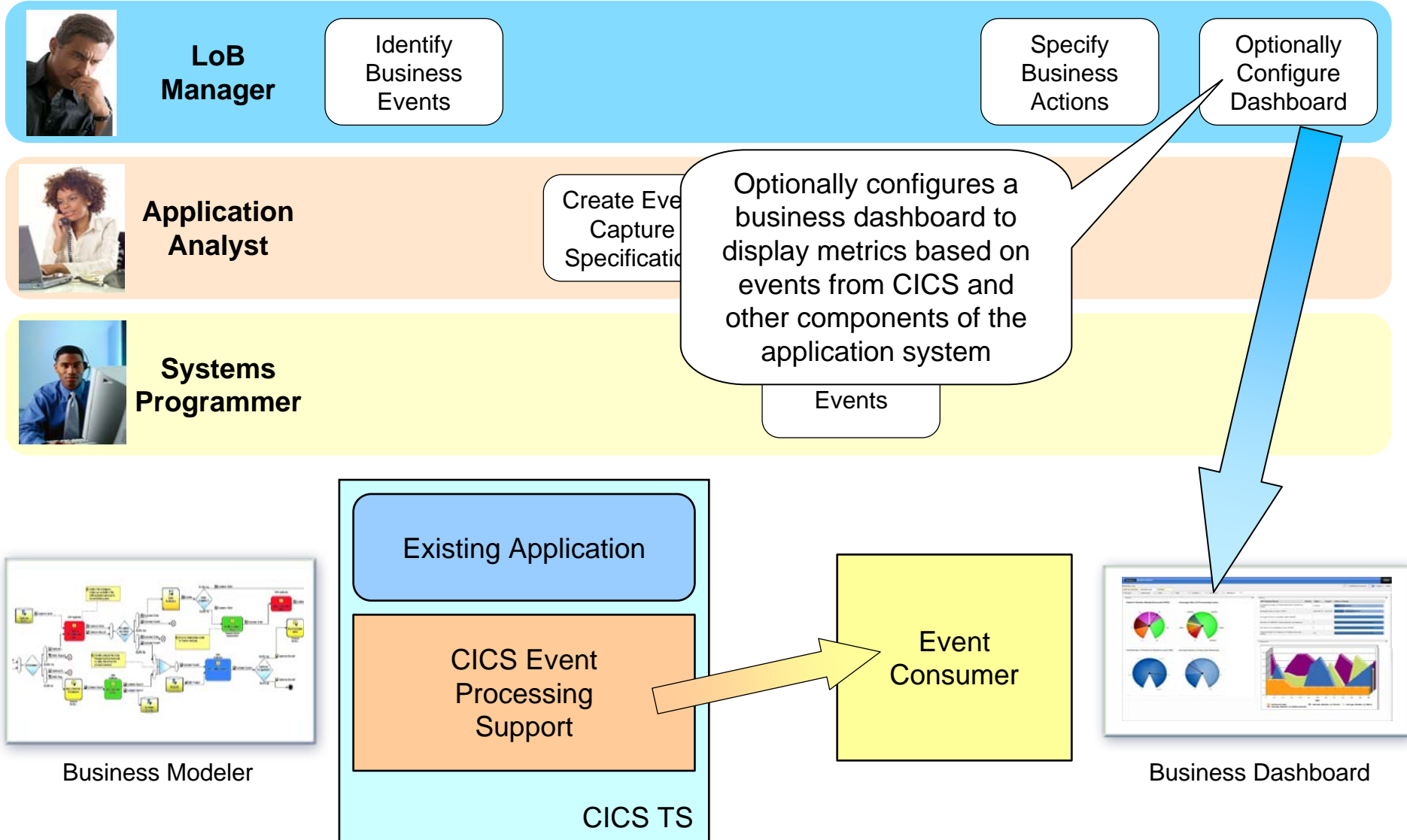


Business Dashboard

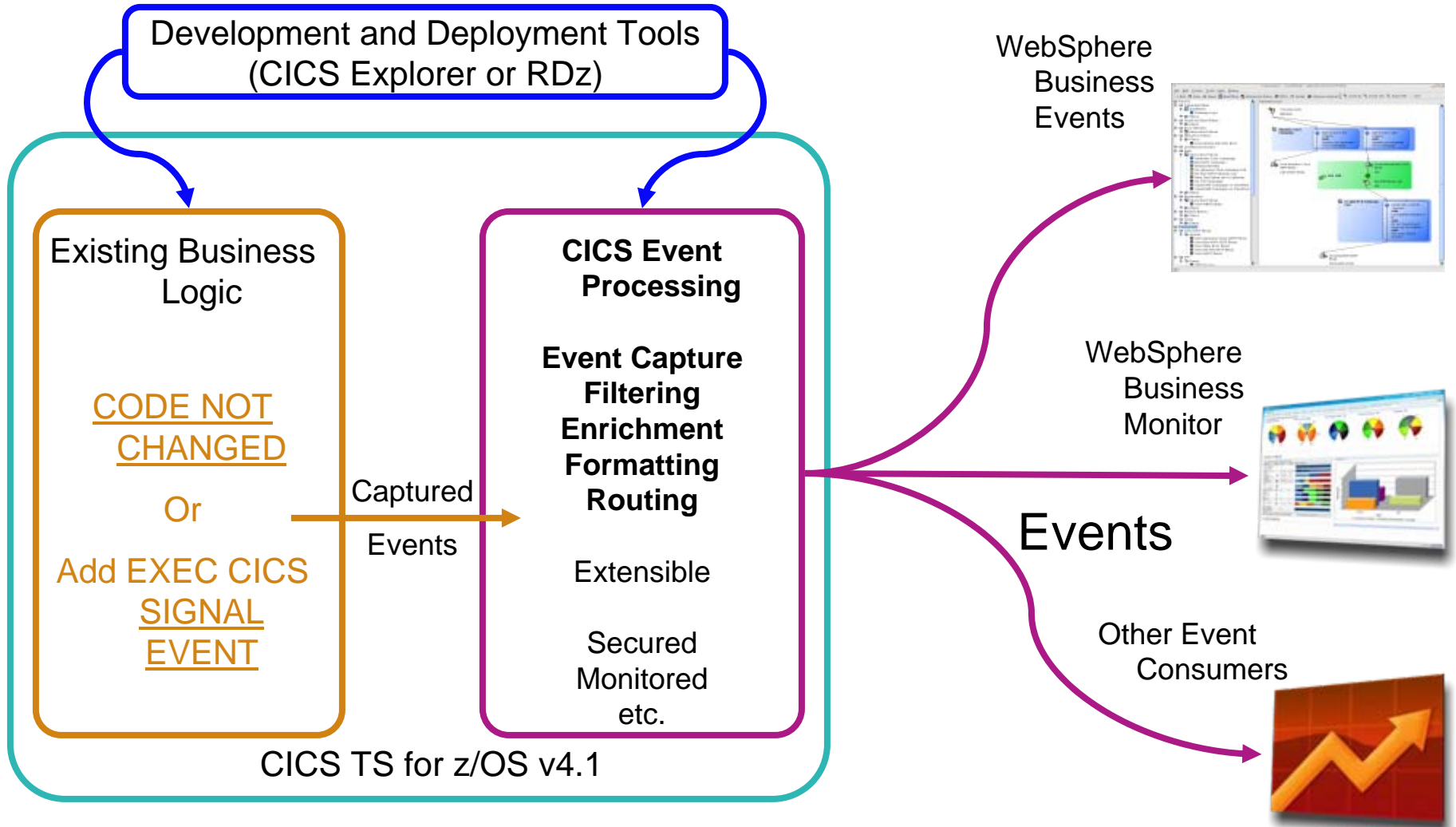
# LoB defines the business actions



# LOB may configure a dashboard



# Event Processing...





# System Events

- Capture events when the state of certain resources changes
- System Events in CICS TS V4.2
  - File state events - file enablement or open state change
  - DB2 connection state events (DB2 connection state changes)
  - TRANCLASS task threshold events (number of tasks in TRANCLASS goes above or below a % of MAXACTIVE)
  - Task threshold events (number of tasks in system goes above or below a % of maxtasks)
  - Transaction has abended (with unhandled abend)
    - Filter by transaction and/or abend code
- Uses the existing event infrastructure
  - Specify in Event Binding Editor, emit via an EP adapter
- Examples of use
  - Notify an application or support staff that a file it uses has become disabled
  - Start an additional cloned CICS region if the number of tasks goes above 90% of maxtasks limit for that region
  - With WebSphere Business Monitor, monitor frequency of transaction abends during month

# System Event Specification Example

The screenshot displays the IBM CICS Explorer BETA interface. The main window is titled 'SysProgEvents.evbind' and shows the 'Specifications' tab. The 'Capture Point' section is active, showing the configuration for a 'System Event: FILE ENABLE STATUS'.

**Specifications**

- PayrollOffline
  - PayrollOffline\_capture**
  - TCLASSFull
  - TClassCS

**Capture Point** | Filtering | Information Sources

System Event: FILE ENABLE STATUS

**General**

Identify and describe the capture specification.

Name: PayrollOffline\_capture Edit...

Description: Payroll file offline event is captured when the payroll file status is no longer enabled

Remove Capture Specification... Copy Capture Specification To...

**Capture Point**

Choose the type and then select the capture point

Application Capture Point

- CONVERSE
- DELETE FILE
- DELETEQ TD
- DELETEQ TS
- INVOKE SERVICE

System Capture Point

- DB2 CONNECTION STATUS
- FILE ENABLE STATUS**
- FILE OPEN STATUS
- TRANCLASS ACTIV THRESHOLD
- TRANSACTION ABEND

Next: Filtering ->

**Event Binding** | Specification | Adapter

**Problems**

0 items

Description	Resource	Path	Location	Type

# System Event Specification Example

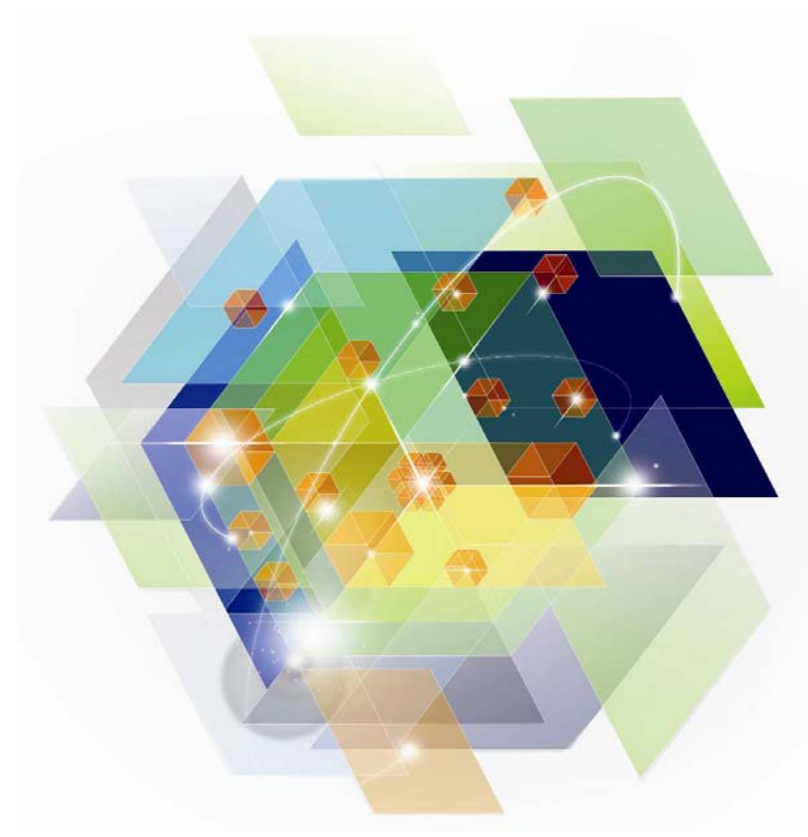
The image displays two screenshots of the IBM CICS Explorer BETA interface, illustrating the configuration of a system event capture point.

**Top Screenshot:** Shows the 'Specifications' tab for the capture point 'PayrollOffline\_capture'. The 'System Event' is set to 'FILE ENABLE STATUS'. The 'Name' is 'PayrollOffline\_capture'. The 'General' section is expanded, showing the event name and a description.

**Bottom Screenshot:** Shows the 'Specifications' tab for the same capture point, but with the 'Context' and 'Event Options' sections expanded. The 'Context' section defines predicates to filter events, with 'Transaction ID' and 'User ID' both set to 'All'. The 'Event Options' section defines predicates for event options, with 'FILE\*' set to 'All', 'FROM\_ENABLESTATUS' set to 'Equals' and 'ENABLED', 'TO\_DISABLESTATUS' set to 'All' and 'DISABLED', and 'OPENSTATUS' set to 'All' and 'CLOSED'. The 'Application Data' section is also expanded, showing that this capture point does not use Application Data.

The interface includes a 'Project Explorer' on the left, an 'Outline' at the bottom left, and a 'Problems' window at the bottom right. The status bar at the bottom shows '0 items' and a table with columns for 'Description', 'Resource', 'Path', 'Location', and 'Type'.

# Demo



# Summary

Not your Father's CICS

New features/technology

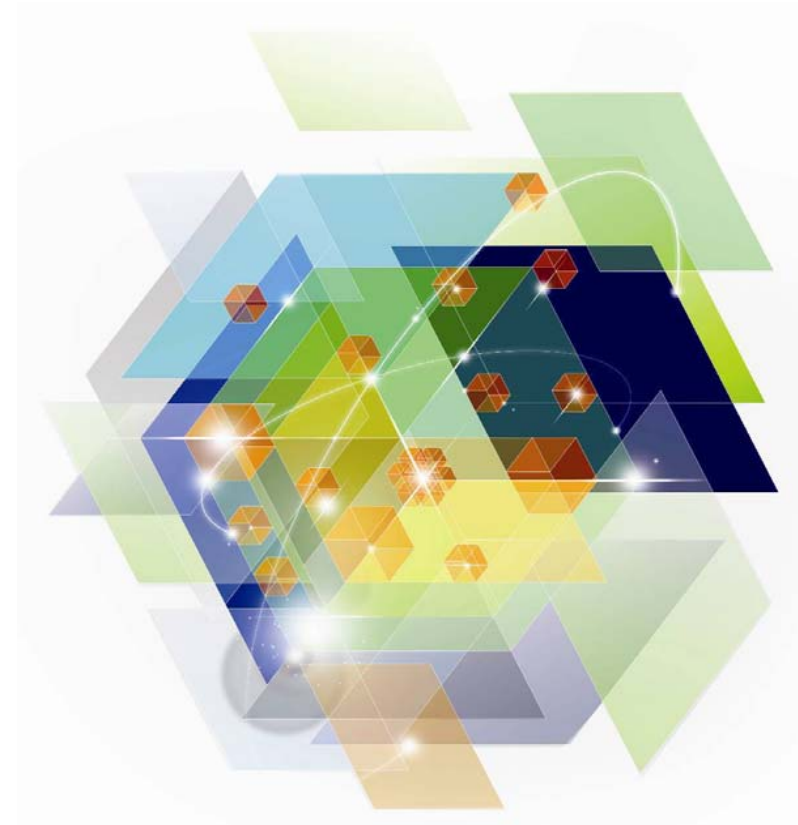
Events, Dynamic Scripting, SOA, mobile

Classic capability enhancements

Threadsafe, connectivity, Performance

No Charge Developer Trial

# Reference materials

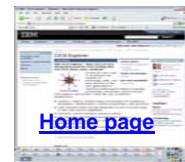


# CICS Communities and Information

- **Web pages**
  - Transaction Server V4.2 <http://ibm.com/cics/tserver/v42>
  - CICS Tools [ibm.com/cics/tools](http://ibm.com/cics/tools)
  - PD Tools [ibm.com/software/awdtools/deployment/](http://ibm.com/software/awdtools/deployment/)
  - CICS Explorer [ibm.com/cics/explorer](http://ibm.com/cics/explorer)
- **CICS Explorer Forum**
  - <http://tinyurl.com/68bndw>
  - IBM developerWorks forum with FAQs, Links and resources, ISV Contributions, etc. Ask questions, suggest improvements, report problems, chat
- **CICSdev community**
  - Public community with blog, forum etc aimed at application developers
  - <https://www.ibm.com/developerworks/connect/cicsdev>
- **Twitter**
  - Subscribe to the [IBM System z channel](#) and the [ibm\\_cics channel](#) to get System z and CICS news flashes
- **CICS Blog**
  - Information, comment and opinion at [TheMasterTerminal.com](http://TheMasterTerminal.com)
- **CICS eNews**
  - Subscribe for news about CICS and related products – share with your clients
- **YouTube channels**
  - [CICS Explorer](#) - Videos, demos and other cool stuff
  - [CICSFluff](#) - Other CICS videos



New



Twitter



Blog



eNews



YouTube

# Key documents

## ▪ Analyst papers

- Lustratus Research - New project platform section for CICS Users  
[ftp://public.dhe.ibm.com/software/htp/cics/pdf/Lustratus\\_Research\\_Paper\\_New\\_project\\_platform\\_selection\\_for\\_CICS\\_users.pdf](ftp://public.dhe.ibm.com/software/htp/cics/pdf/Lustratus_Research_Paper_New_project_platform_selection_for_CICS_users.pdf)
- Branham Group: IBM CICS Tools: Unrealized Productivity Gains and True Cost Savings  
[ftp://public.dhe.ibm.com/software/htp/cics/tools/IBM\\_CICS\\_Tools\\_Whitepaper\\_2009.pdf](ftp://public.dhe.ibm.com/software/htp/cics/tools/IBM_CICS_Tools_Whitepaper_2009.pdf)
- Software Strategies: IBM z/OS Problem Determination Tool Suite Leads Again  
[https://www14.software.ibm.com/webapp/iwm/web/preLogin.do?lang=en\\_US&source=swg-rszswg](https://www14.software.ibm.com/webapp/iwm/web/preLogin.do?lang=en_US&source=swg-rszswg)

## ▪ IBM Redbooks

- [CICS Transaction Server from Start to Finish](#), SG24-7952-00
- [Smarter Banking with CICS Transaction Server](#), SG24-7815-00
- [Implementing Event Processing with CICS](#), SG24-7792
- [Introduction to CICS Dynamic Scripting](#), SG-7924

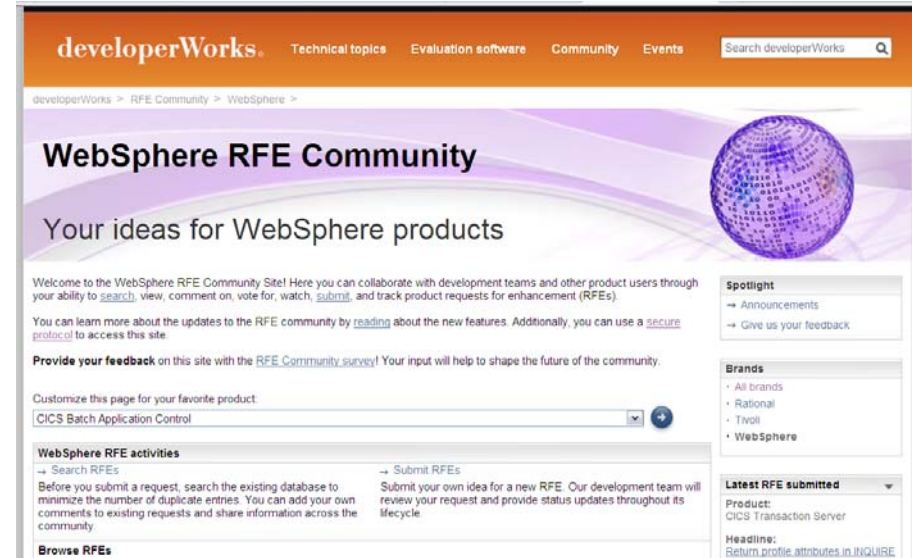
## ▪ Coming soon ...

- CICS and SOA: Architecture and Integration, SG24-5466-06
- Implementation of Popular Business Solutions with CICS Tools, REDP-4824-00



# Raising new requirements with RFE

- You can now raise and track requirements using the new IBM RFE system for
  - CICS Transaction Server
  - CICS Explorer
  - TXSeries
  - WXTR
  - IBM CICS Tools
  - CICS Transaction Gateway
  - PD Tools - coming soon (target end Jan 2012)



- Existing FITS requirements are currently being processed, and will either be transferred to RFE or closed and returned.
- All brands <https://www.ibm.com/developerworks/rfe/> - select Brand: WebSphere
- WebSphere only [https://www.ibm.com/developerworks/rfe/?BRAND\\_ID=181](https://www.ibm.com/developerworks/rfe/?BRAND_ID=181)
- Select Product Family: Transaction Processing - for CICS Transaction Server, TXSeries, and WXTR
- Select Product Family: Enterprise Tooling - for the CICS Tools, CICS Transaction Gateway, and PD Tools
- Raise CICS Explorer base requirements against the Explorer component of CICS TS.
- Raise plug-in requirements against the Explorer component of related product.

IBM Software

# Impact2012

The Premier Conference for Business & IT Leadership

**Innovate. Transform. Grow.**

**April 29-May 4** Las Vegas, NV



**30 sessions and labs in the CICS Track**

**Visit the zSoftware Solutions Suite for live demos and technical discussions**

**Early registration discounts available!**

<http://www-01.ibm.com/software/websphere/events/impact/registration.html>