

Martin Owen
CEO



- Created in 2011
- To address market gaps within Enterprise Architecture and Strategic Planning knowledge and agile tools
- Founder members: 60+ years of Enterprise Architecture and Strategic Planning experience
- IBM Partners
 - Products
 - Cloud
 - Consulting and Training Services
- Offices in UK, US, Australia
- Certified TOGAF, ArchiMate practitioners



- Mobility/BYOD
- Cloud Services
- Social Media
- Big Data
- Security
- Innovation



- Overview of Strategic Planning for IT
- EA in the Strategic Planning Lifecycle
- Strategic Planning for IT: The Process
- Strategic Planning for IT: The Platform
- Summary





- A systematic approach that
 - allows ALL stakeholders become leaders in change initiatives
 - helps an organization unite its knowledge of the market, capabilities and delivery into a single platform
 - ensures projects are backed with a solid business case and traceable back through the decision making process
 - ensures the entire project portfolio can be managed as change occurs

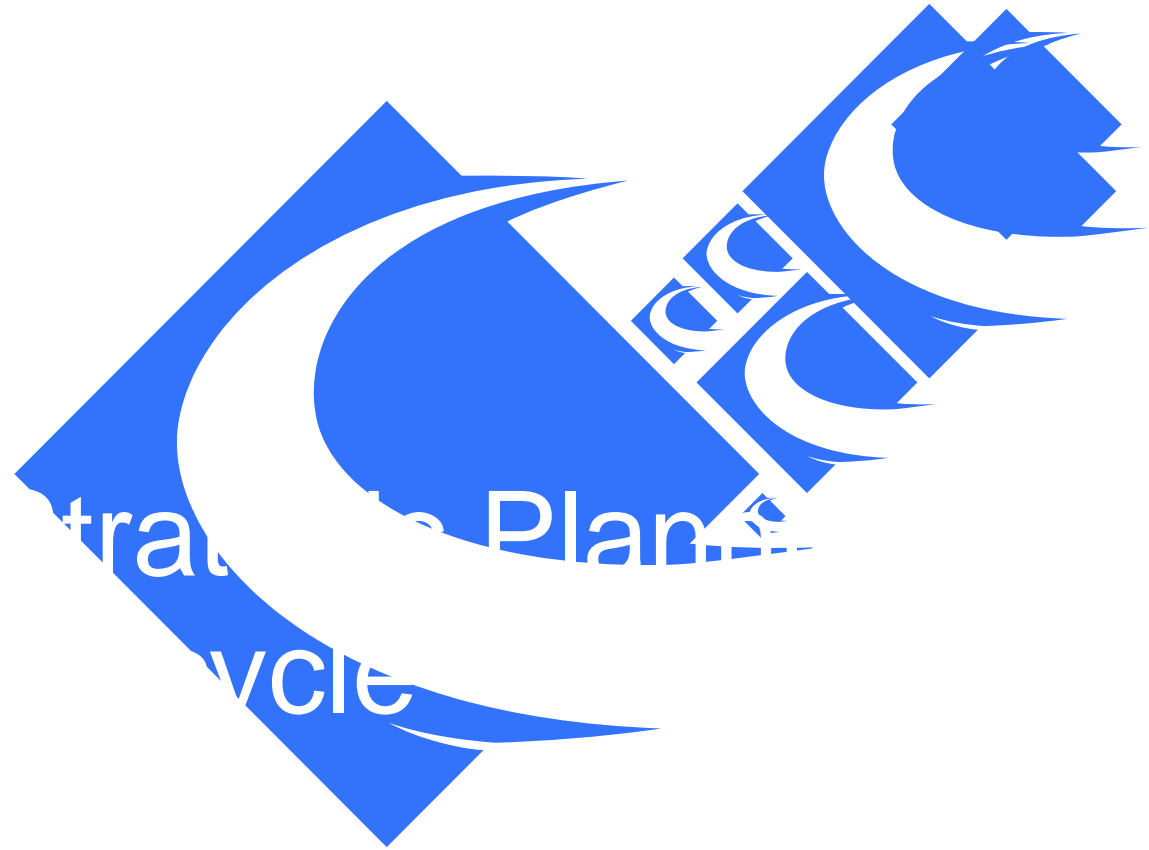


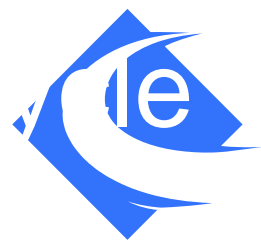


- The evolution of Enterprise Architecture
 - Socialization
 - Portfolio Management
 - Enterprise Architecture (EA) with ArchiMate
 - Solution Delivery
- EA without Strategic Planning for IT truly limits your ability to succeed



- Technology trends are driving customer behaviour
 - Web technology
 - Mobile availability
 - Geographically dispersed teams
- Multiple data sources and tools
- Organizations are becoming more engaged with their stakeholders
- Cloud technology makes deployment easier
- SaaS models reduce barriers to entry





Initiatives

Strategy, purpose,
objective, vision, etc.

Projects we
should do

Do the right things

Enterprise
Architecture

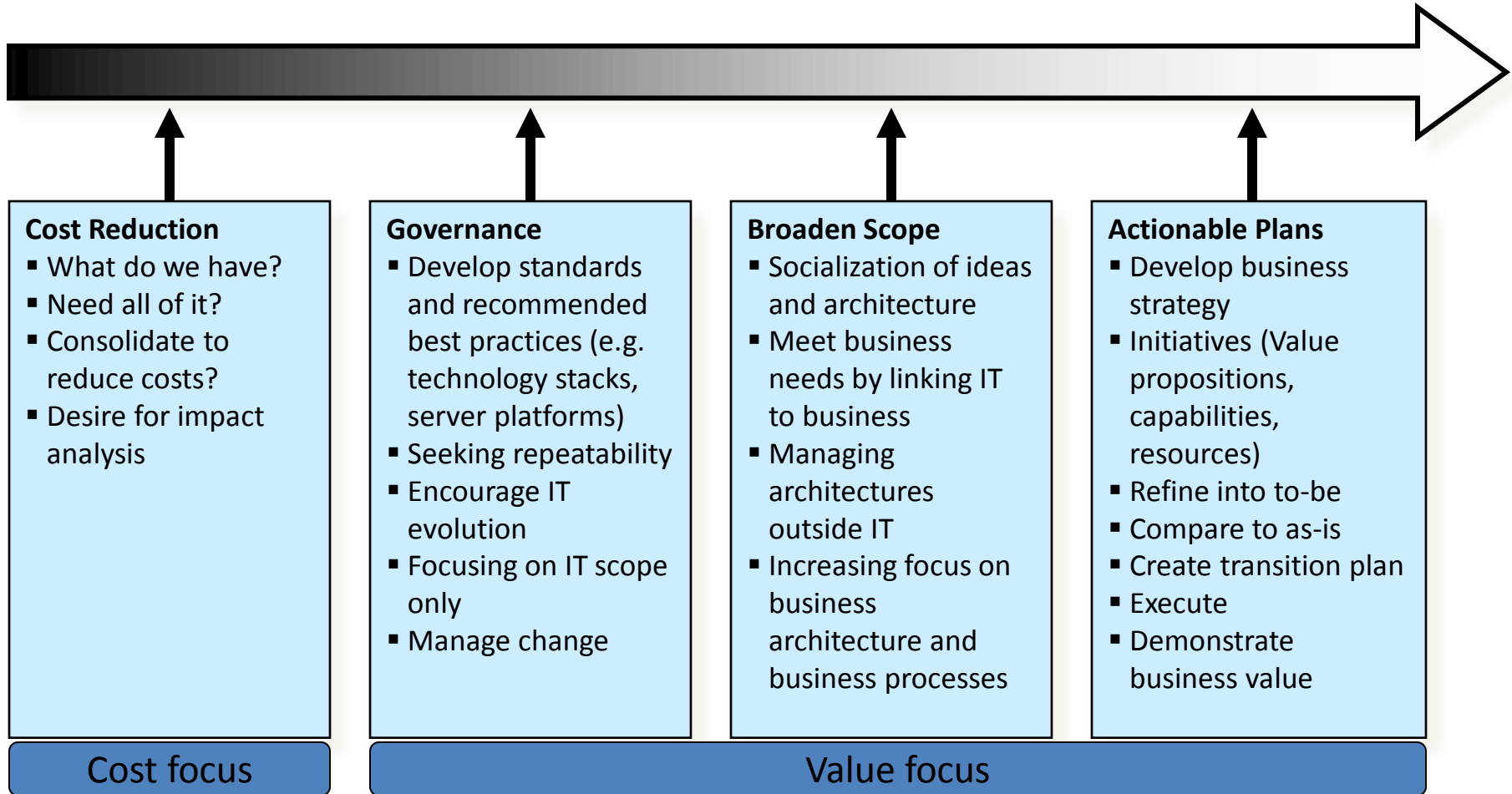
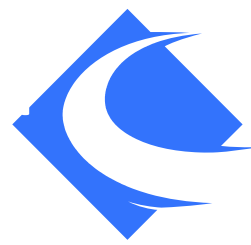
Do things right

Project
Prioritization &
Planning

Projects we
will do

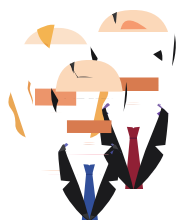
Programs & Projects

Strategic
Delivery



Some organizations will move through a progressive set of phases as they adopt a strategic planning approach





Everyone

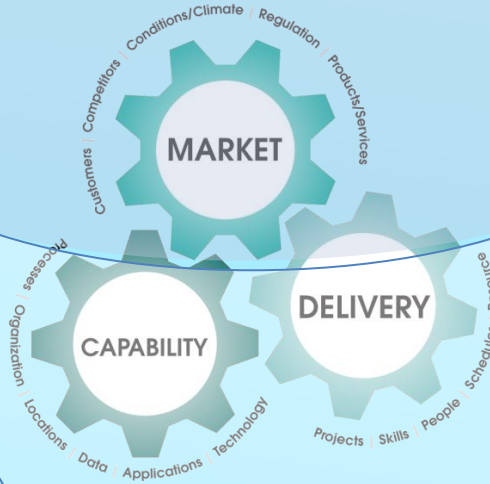


User



Program Evaluation Board

IT / System Centric
Ideas
Initiatives
Information
Goals
Objectives



Prioritized Project Portfolio
Requirements (NF)
Dates
Cost
Resources
Risk
Priority
Dependencies



Like to Do

SPP

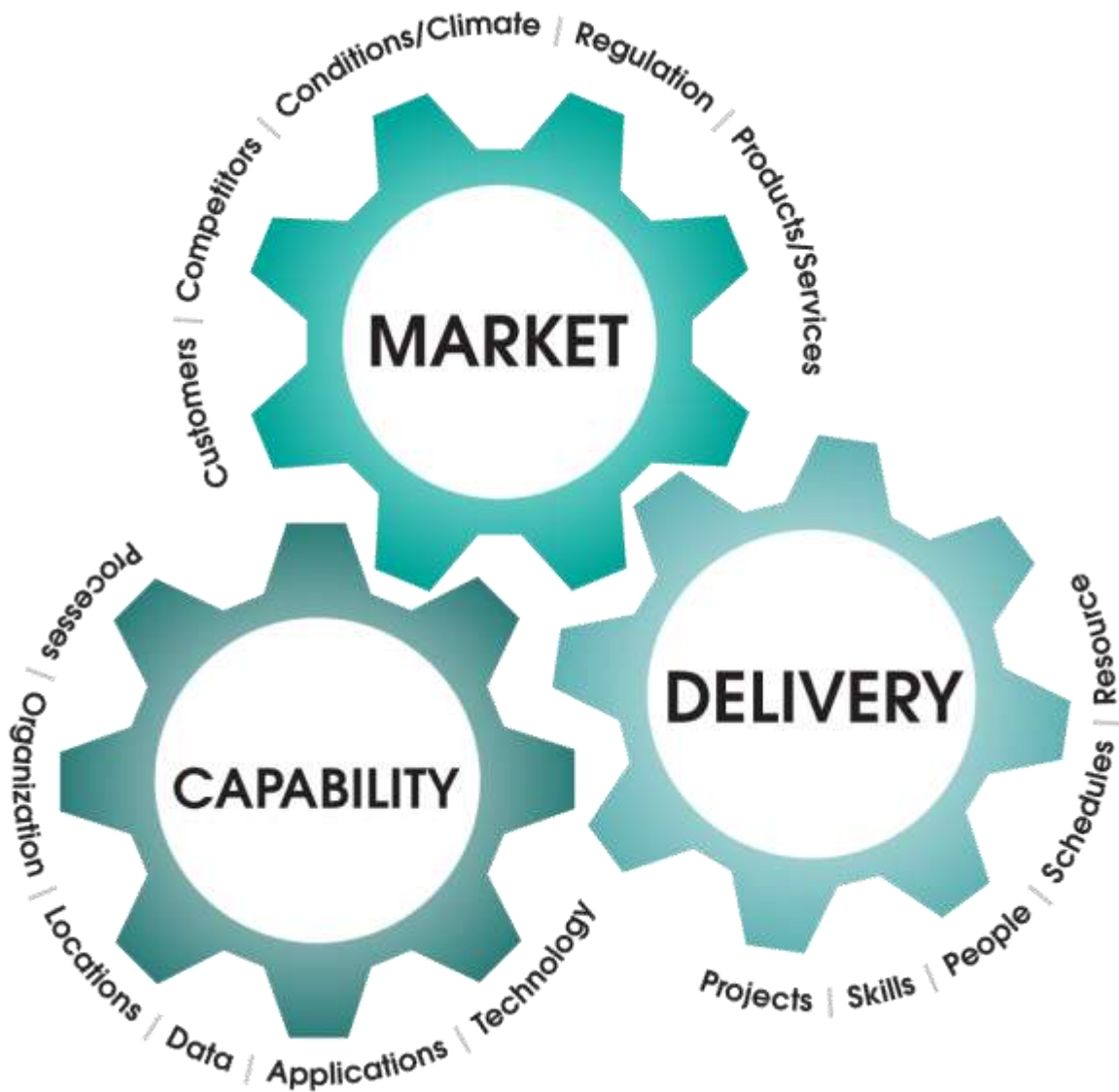
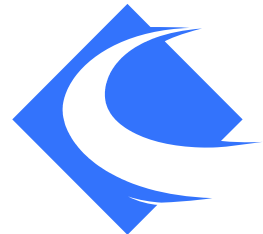
Will Do

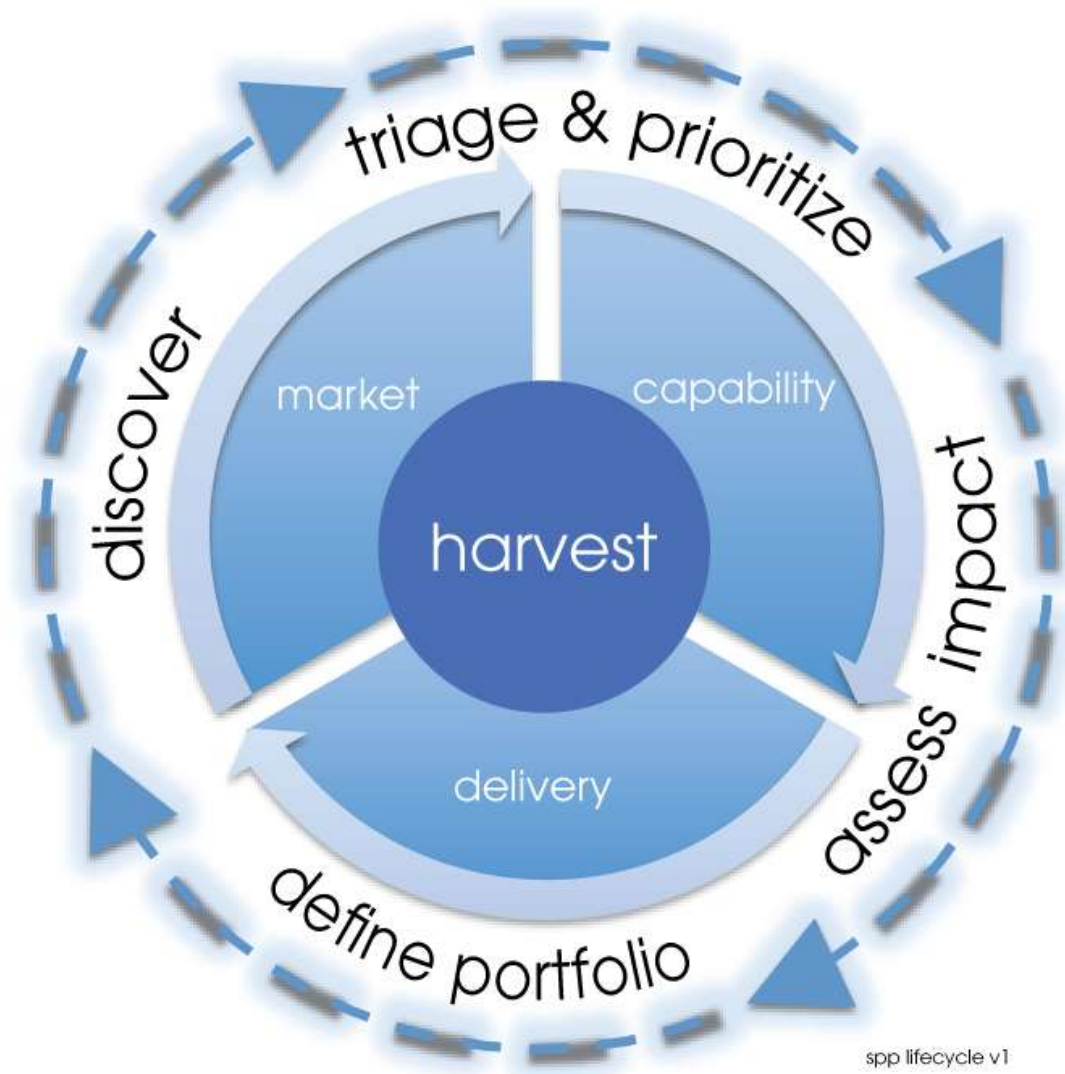


- Usually based on cost and resource availability
- No formal techniques to assess impact and true value
- Stakeholders with differing requirements are not always involved
- Difficult to assess impact of initiatives on existing project portfolio



- Diversity and disconnect
 - Diverse teams
 - Diverse tools
 - Diverse vocabularies
 - Diverse repositories
- What's needed is a framework to handle and prioritize the demands of the organization whilst embracing
 - Enterprise Architecture
 - Programme Management
 - Systems delivery





spp lifecycle v1



- Starts with an organization knowing what it has – often called an ‘inventory’ built through ‘harvesting’
- Correlation of Environment, Capability and Delivery information which requires a conjoined meta-model
- A standardised view of the architecture
- Business intelligence to provide questions and answers

Application/Technology Deployment

Discovery



Triage/Prioritize



Impact Analysis



Delivery

Market Analysis

Portfolio Management

Project/Team Management

Crowd Sourcing

Enterprise Architecture

Solution Architecture/BPM

Social

Project Management Office

Executive / Senior Mgr

Enterprise Architect(s)

Project Team

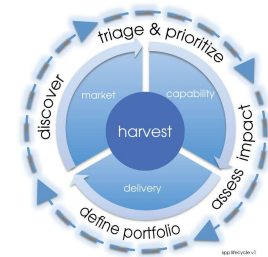
Solution Architect(s)

Business Intelligence

Collaboration



Anyone can produce a Request for Change (RFC)



Discover

- Ideas
- Products/Services
- Regulations
- Competitors
- Economic Landscape
- Goals
- Objectives
- Strategic Intent (Business)
- Initiatives
- Guiding Principles
- Standards
- Best Practices

Harvest

- EA/SPP
- Project Portfolio
- Customers

Enterprise Arch. Team
Program Evaluation Board

Priority RFC

Triage & Prioritize

- Define Prioritization Criteria
- Review
- Reject
- Accept
- Group
- Prioritize
- Business Value Analysis

Program Evaluation Board

Initiative

Assess Impact

- Examine Initiative
- Group Initiatives
- Assess against EA
- Produce Target States (TS)
- Produce Transition Plan for each TS
- Product Solution Alternatives (SA)
- Document SA
- Build Business Proposal (BP)

Enterprise Arch. Team

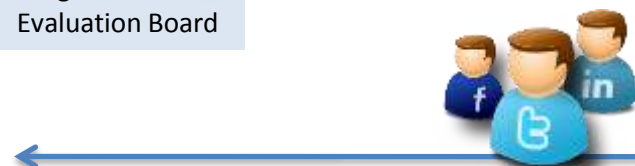
Business Proposal

Define Portfolio

- Examine BP
- Review SAs vs. Project Portfolio
- Make Informed Business Decision
- Business Value vs. Cost
- Prioritize SAs
- Select SA
- Prioritize BP
- Select BP
- Define Projects
- Prioritize Projects

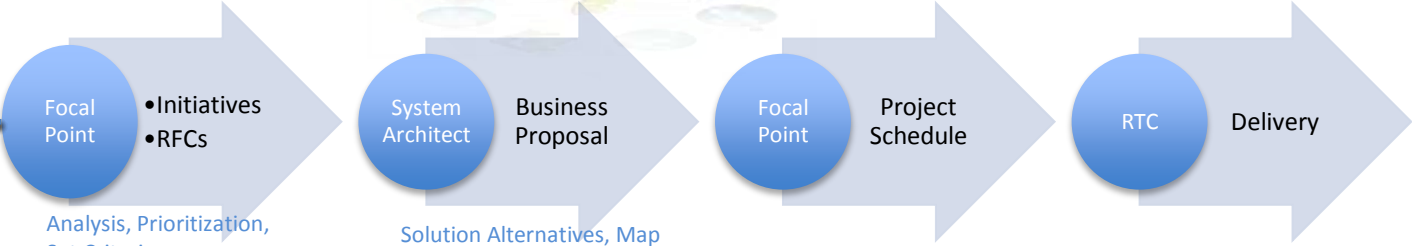
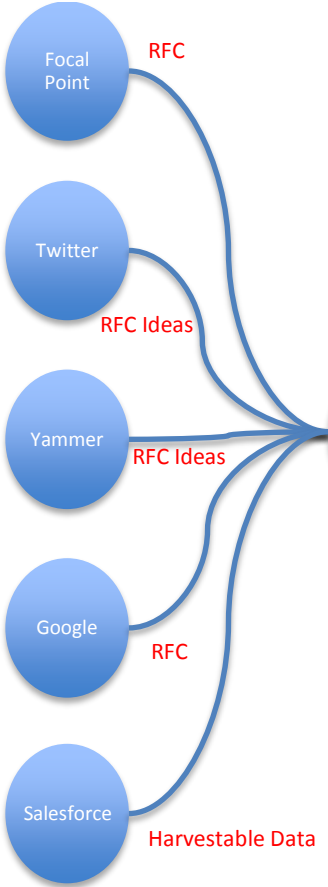
Program Evaluation Board

Project



Innovator Analysis – Who thought of what and its Business Value





Cubi/BI

- RFC Status by User
- RFC Status by Category
- Top 10 RFCs by Priority
- Top 10 Customers by RFC
- Top 10 RFCs by





What are you working on?

Update

tips

All Following Received Sent

Yammer

YourCorp

Share something with Your Corp:

Update

hank in reply to keth: Thanks. Our new release will make it faster yet.

keth: Our performance is much better with the new code enhancement. Glad you

keth has created the Accounting (Accounting) group. All Your Corp Accounting (Accounting)

keth: We should allow users to stop Access when they click

corso Strategic Planning for IT

Corso Software as a Service (SaaS)

Please fill out this form in order that we can understand your SaaS requirements and provide you with an accurate quote.

Company Architecture Portfolio Requirements Management

Name *

First Last

Email *

Company *

Address

Street Address

Address Line 2

City State / Province / Region

Postal / Zip Code Country

Next Page

Email Calendar Documents Reader Web mo

Google docs

Create new Upload

Document Presentation Spreadsheet

My folders

Share

Name

YESTERDAY

Yammer

YourCorp

Home Members Groups Tags Links

What's New at YourCorp

Profile Settings Admin Applications Help Sign Out

Home Members Groups Tags Links

What's New at YourCorp

Profile Settings Admin Applications Help Sign Out

Home Members Groups Tags Links

What's New at YourCorp

Profile Settings Admin Applications Help Sign Out

WUFOO

Making forms easy + fast + fun.

WUFOO Mortgage Application

WUFOO Buy a T-Shirt

WUFOO Customer Satisfaction Survey

WUFOO Workshop Registration

WUFOO Join our

twitter

@twitter/team

Follow this list

Magnuson Switching from Progressive to State Farm is saving me \$80/month on my motorcycle insurance, the exact price of my monthly car insurance.

robey What happened at 12 & Folsom? Intersection blocked by police and ambulances for the second day in a row...

Search

Lists

@twitter/team

@ev/sanfrancisco

@vl/entrepreneurs

Tweets

Following 86

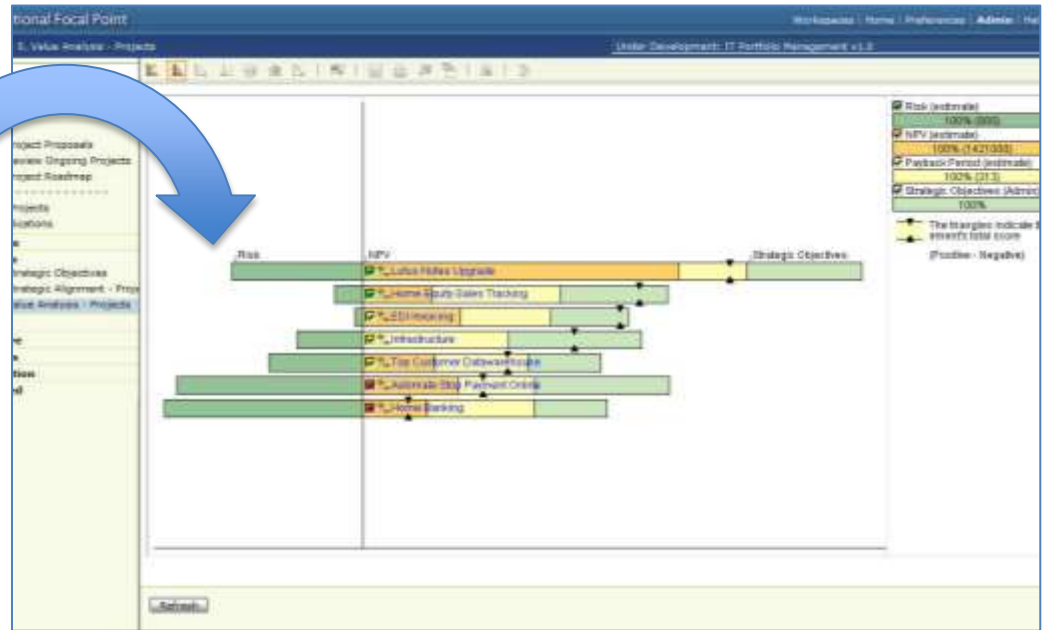
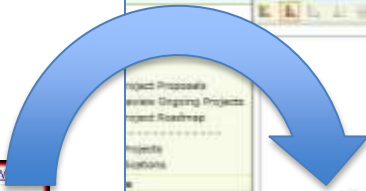
Followers 18

Following

What do you think of the new 1200 features? Send us your feedback!



A collage of various business and social media applications. At the top left is a 'What are you working on?' update box. Below it are 'YourCorp' social media feeds. In the center is the 'CORSO' software interface with the title 'CORSO Software as a Service (SaaS)'. To the right is a 'Google docs' interface with options for 'Create new', 'Upload', and 'My folders'. At the bottom is a 'twitter' feed for '@twitter/team' showing tweets about mortgage applications and customer satisfaction surveys. A 'WUFOO' logo is also visible in the bottom left of the collage.





Modules

Add

Display

- 1. Project Proposals
- 2. Review Ongoing Projects
- 6. Project Roadmap

- All Projects
- Applications

Prioritize

Visualize

- 3. Strategic Objectives
- 4. Strategic Alignment - Projects
- 5. Value Analysis - Projects

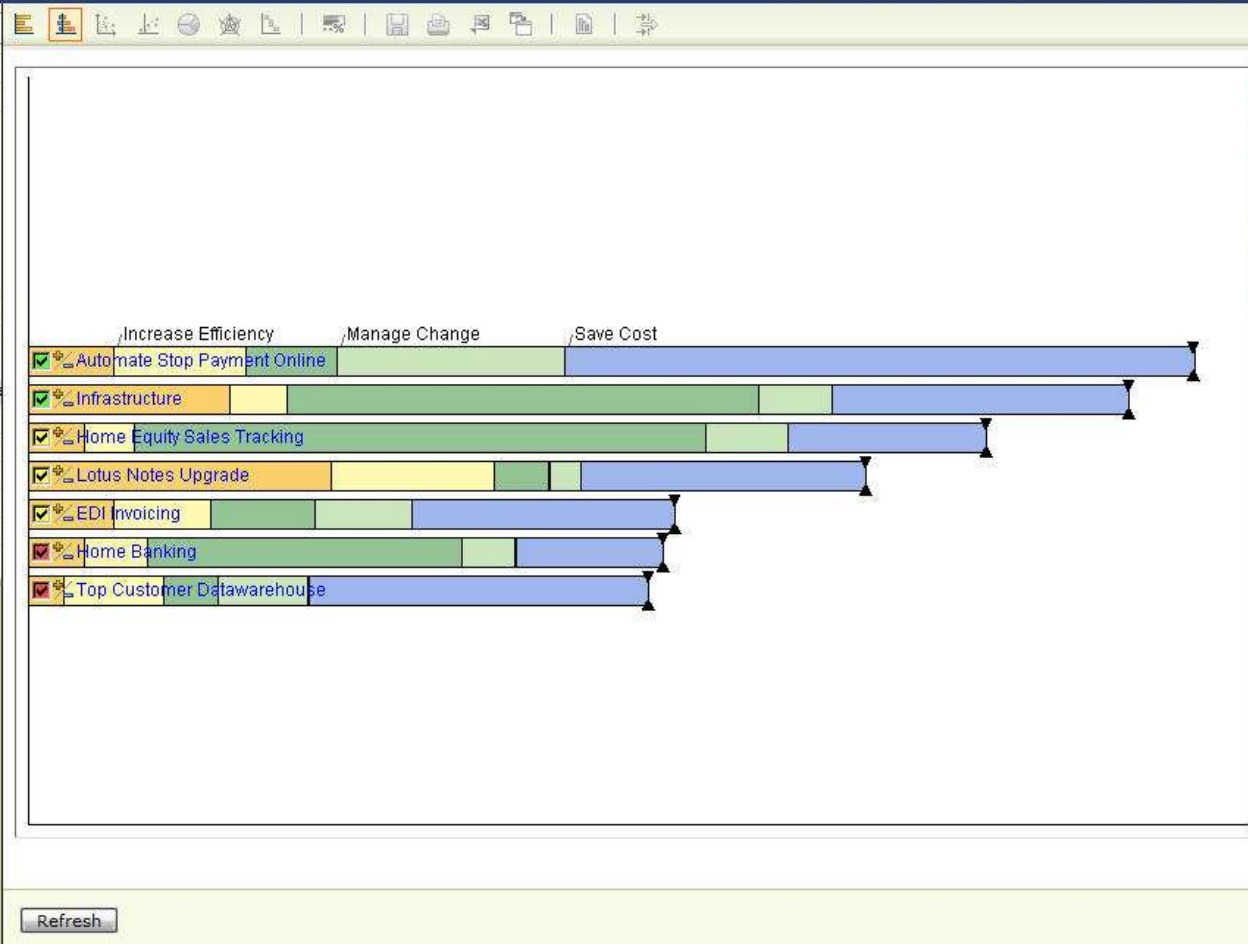
Reports

Configure

Members

Information

Advanced

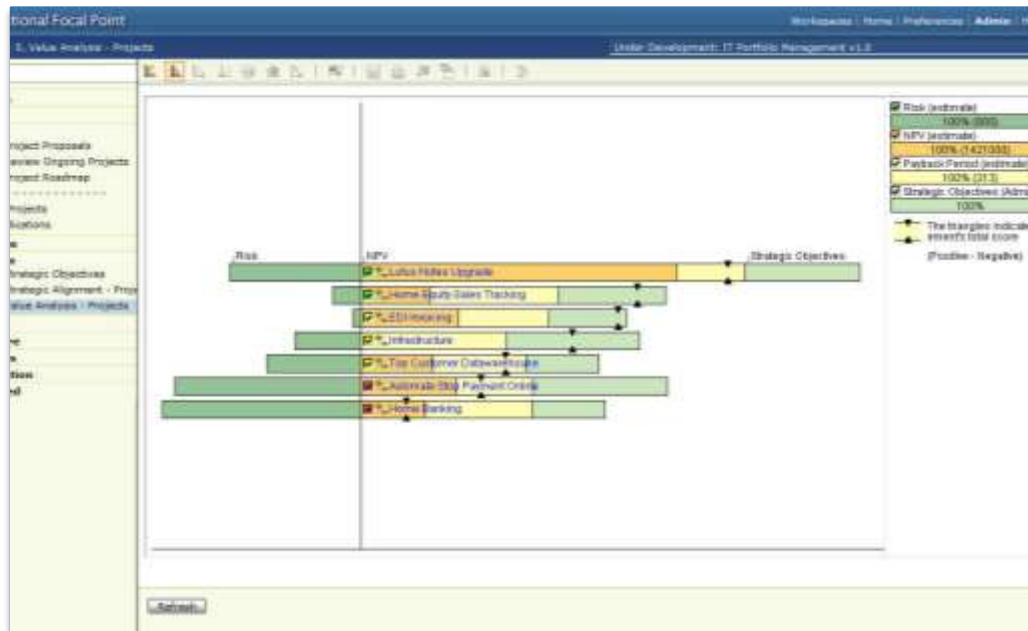


- Adapt To New Technologies (Public) 100%
- Increase Efficiency (Public) 100%
- Innovation (Public) 100%
- Manage Change (Public) 100%
- Save Cost (Public) 100%

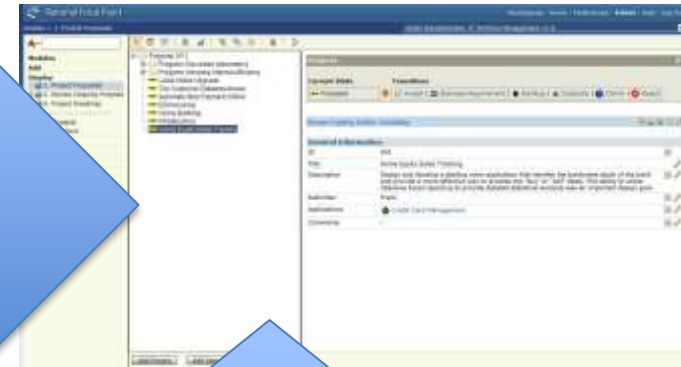
The triangles indicate the element's total score (Positive - Negative)

Refresh

Block

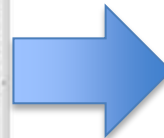
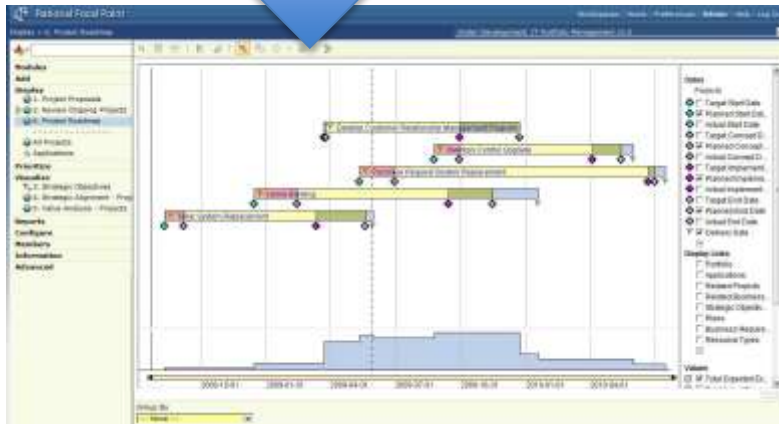
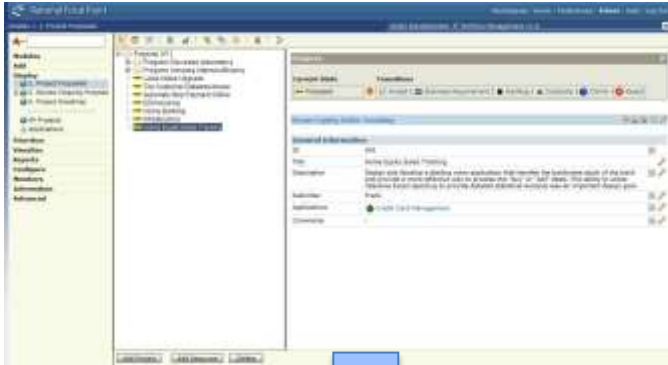


Initiatives



Current and Future Enterprise Architecture

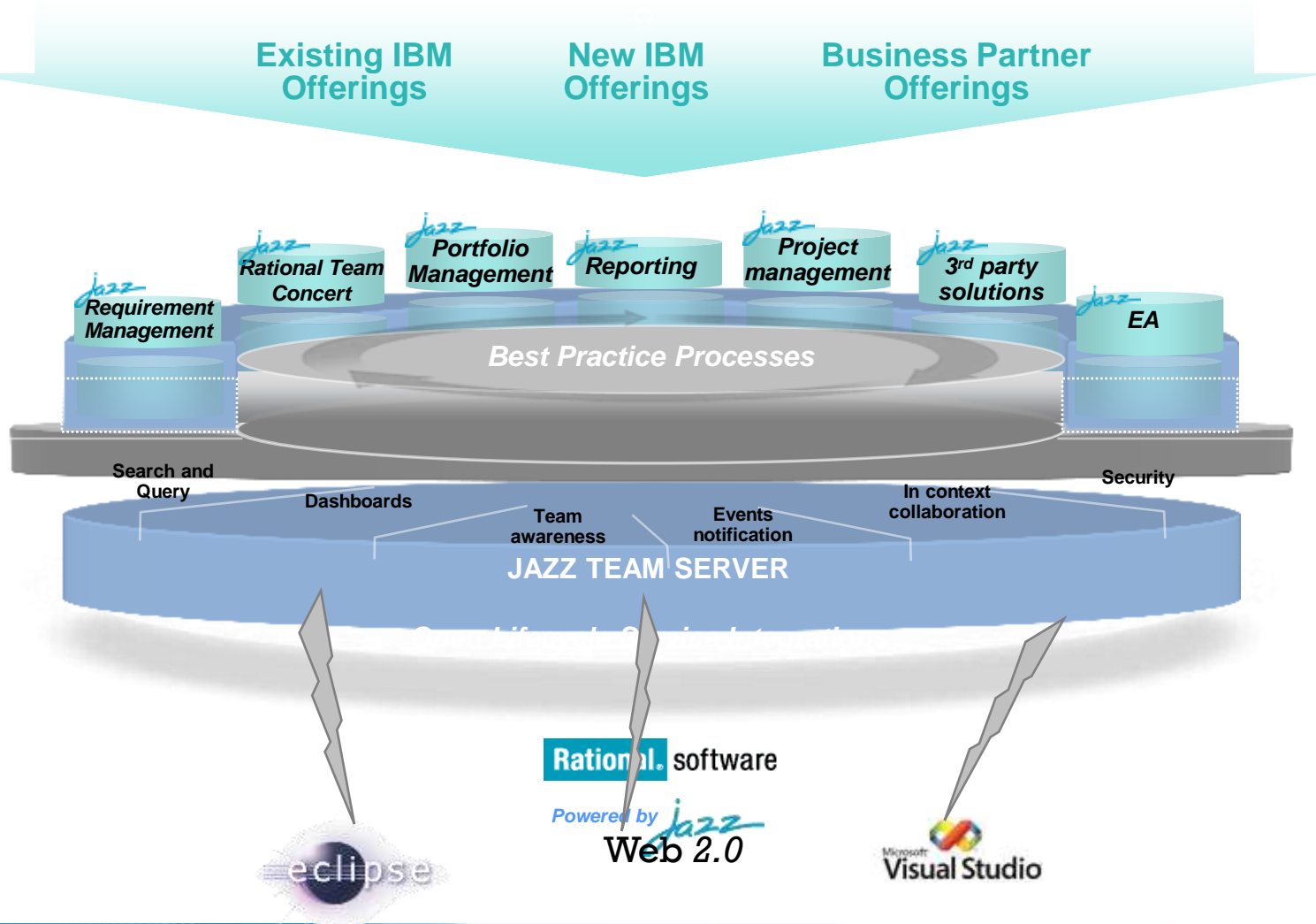






- A SPP is both a framework and methodology
- Gives the organization the ability to ask questions and get answers
- Linking of information is fundamental to the success of the SPP
- Information does not exist in a single repository (this is inconceivable)

An evolution of value in collaborative lifecycle management bringing forward existing investments and delivering new innovative capabilities







- Effectively Manage new initiatives and change
- Deliver a systematic approach to manage change
- Align systems with capabilities
- Engage all stakeholders
- Co-ordinate different lifecycles and tribes
 - E.g. defines the 'what' and 'why' of solutions rather than the 'how' and 'who' of ALM
- Utilise new technology trends
 - Mobile
 - Jazz
 - Business Intelligence
 - Federated data sources
- Inclusive of IBM technology but allows integration with other technologies

Strategic Planning Platform

