

# Maximo Product Update

Lisa Stuckless - Maximo Product Management

June 9<sup>th</sup>, 2015





## Please Note:

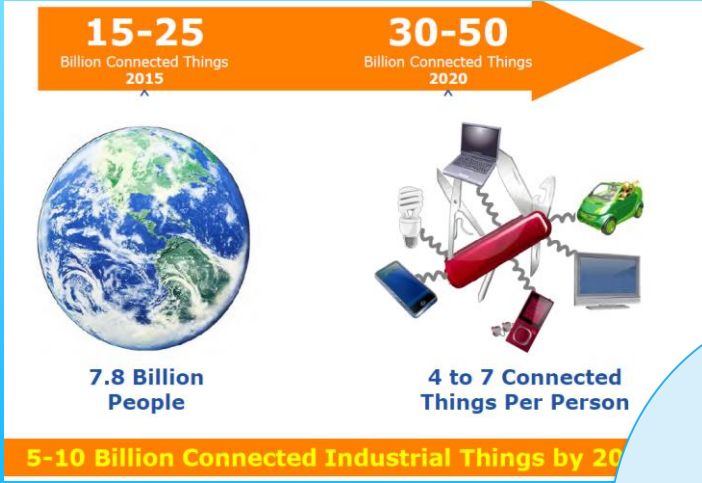
- IBM's statements regarding its plans, directions, and intent are subject to change or withdrawal without notice at IBM's sole discretion.
- Information regarding potential future products is intended to outline our general product direction and it should not be relied on in making a purchasing decision.
- The information mentioned regarding potential future products is not a commitment, promise, or legal obligation to deliver any material, code or functionality. Information about potential future products may not be incorporated into any contract.
- The development, release, and timing of any future features or functionality described for our products remains at our sole discretion.

Performance is based on measurements and projections using standard IBM benchmarks in a controlled environment. The actual throughput or performance that any user will experience will vary depending upon many factors, including considerations such as the amount of multiprogramming in the user's job stream, the I/O configuration, the storage configuration, and the workload processed. Therefore, no assurance can be given that an individual user will achieve results similar to those stated here.

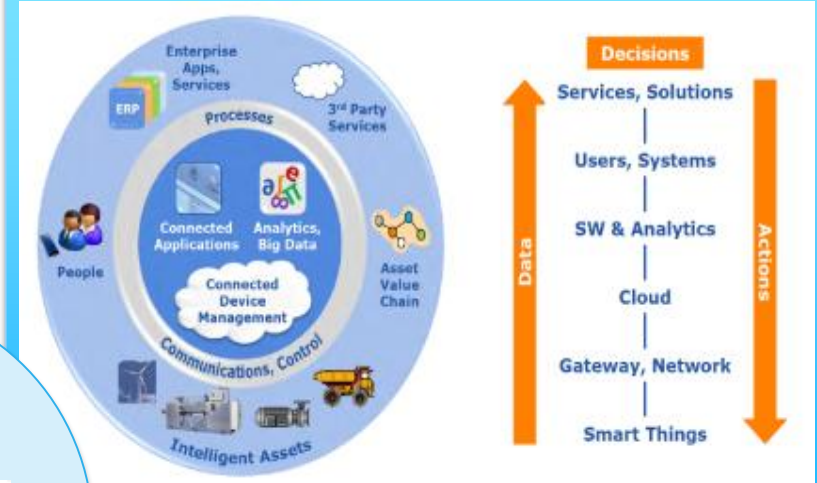


# Trends: Internet of Things (IoT), Analytics, Mobility, Standards

## Number of Connected Devices Exploding



## Industrial IoT for Connect Assets



Mobility Takes Center Stage



ARC Advisory

## Increased Interest in Asset Management Standards ISO 55000/PAS 55



## Advanced Analytics Driving Decision Making



# Maximo Product Portfolio 2015 – Release 7.6



## Core Solutions

**Maximo Asset Management**  
Everyplace

**Maximo Asset Management (SaaS)**

## Industry Solutions

**Maximo for Transportation**

**Maximo for Nuclear**  
Cal

**Maximo for Life Sciences**  
Cal

**Maximo for Utilities**  
Spatial

**Maximo for Oil & Gas**  
HS&E

**Maximo for Aviation**

## Add-on Solutions

**Maximo Scheduler**

**Maximo Linear Asset Manager**

**Maximo Archiving**

**Maximo Calibration**

**Maximo Adapter for SAP**

**Maximo Inventory Insights**

**Maximo Health Safety & Environment Mgr**

**Maximo Asset Configuration Manager**

**Maximo Service Provider (managed & internal)**

**Maximo Spatial**

**Maximo Adapter for Oracle**

## Mobile Solutions

**Maximo Mobile**

**Maximo Anywhere**

## ISM Library down loads

**ECRI Integration**

**BIM Integration**

**Anywhere Mobile Applications**

# Key areas of Investment

## Expand Cloud, Analytics and Mobile Offerings



### Core EAM Capabilities

- Visualization and Location Based Services
- Inspections and Condition-based Asset Management



### Industry Solutions

- Address new Industries
- Expand and improve existing solutions



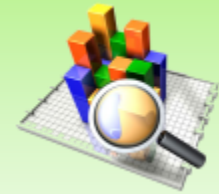
### Mobility

- Maximo Anywhere mobile platform enhancements
- Inventory and Asset management applications
- Industry-specific applications



### Analytics

- Enhanced KPI's, Scorecards, Trend Analysis, and Reporting
- Optimization of key business processes



### Cloud

- More SaaS and Hybrid offerings
- Continuous delivery for on-premise and cloud offering
- SaaS, multi-tenant enablement of IS and Add-on offerings





# A look back... 2014 Maximo Asset Management Deliverables

1H 2014

2H 2014

- New Products
- New Versions
- No-Charge Offerings
- Fix packs

**Maximo SaaS** Delivery of Maximo on IBM Softlayer cloud infrastructure  
UX improvements  
FISMA federal security requirements

**Maximo Inventory Insights SaaS** Provide predictive analytics to reduce over-stock inventory investment and improve asset availability by reducing out-of-stock conditions

**Maximo Service Provider 7.5.2**  
Key improvements to billing schedules, internal service items, and customer specific job plans

**Maximo Asset Mgmt v7.6**  
Improve UX and TTV with UI improvements and IM-based install  
Integration of BI Packs  
Integration of mapping and crews capabilities  
Reduce service delivery cost w/ multi-tenancy support  
Platform currency and backward compatibility with 7.5.x IS and Addons

**Maximo Business Intelligence Packs**  
Descriptive analytic KPIs to enhance business decisions related to Supply Chain

**Maximo Anywhere 7.5.1**  
Support for iOS; Configuration tooling; Advanced work management; Support for attachments

**Maximo Service Provider 7.5.3**  
Key improvements to price books, bill processing, customer specific vendors, and software license billing

**Maximo Service Provider 7.6**  
Support for multi-tenancy

**Maximo Fix-pack 7.5.0.6**

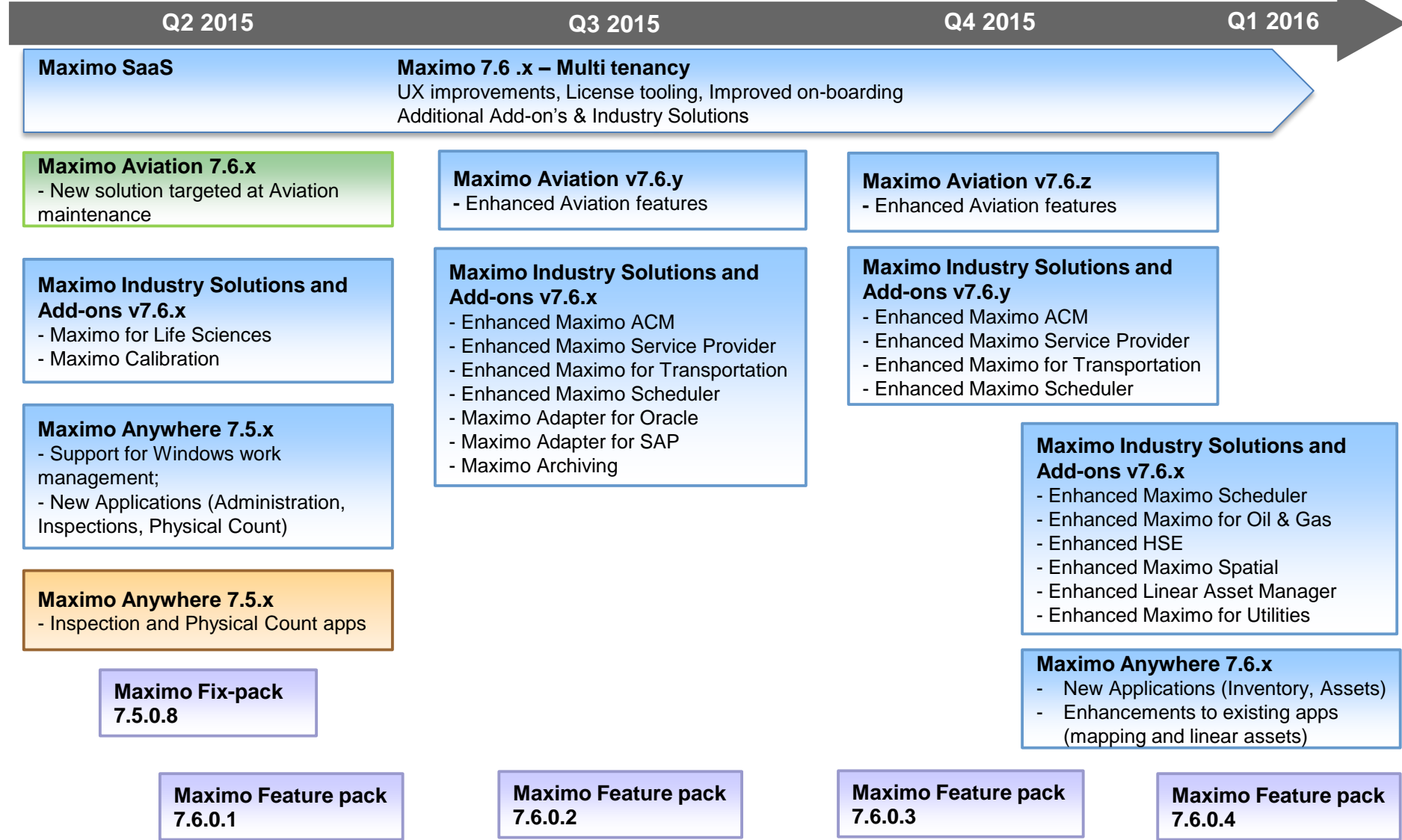
**Maximo Fix-pack 7.5.0.7**

The information on the new product is intended to outline our general product direction and it should not be relied on in making a purchasing decision. The information on the new product is for informational purposes only and may not be incorporated into any contract. The information on the new product is not a commitment, promise, or legal obligation to deliver any material, code or 5 functionality. The development, release, and timing of any features or functionality described for our products remains at our sole discretion. .

- New Products
- New Versions
- No-Charge Offerings
- Fix packs



# 2015/2016 Maximo Asset Management Plans



The information on the new product is intended to outline our general product direction and it should not be relied on in making a purchasing decision. The information on the new product is for informational purposes only and may not be incorporated into any contract. The information on the new product is not a commitment, promise, or legal obligation to deliver any material, code or functionality. The development, release, and timing of any features or functionality described for our products remains at our sole discretion. .



# Maximo Industry Solutions and Add-on's

- When will Industry Solutions and Add-on's be available for Maximo 7.6 ?

Dec 12<sup>th</sup>, 2014

**IS/AOs Certified  
to work with  
Maximo 7.6.0**

**7.6.x**

Maximo Service Provider 7.6.0

**7.5.x**

Maximo for Life Sciences 7.5.0

Maximo Calibration 7.5.0

Maximo for Transportation 7.5.1

Maximo Asset Configuration Mgr 7.5.1.1

Maximo Asset Management Scheduler 7.5.2

Maximo Enterprise Adapter for Oracle 7.5.0

Maximo Enterprise Adapter for SAP 7.5.0

Maximo Archiving Adapter for Optim 7.5.0

Maximo for Oil & Gas 7.5.1

Maximo Health, Safety, & Environment 7.5.1

Maximo Spatial Asset Management 7.5.0.1

Maximo Linear Asset Management 7.5.0

Maximo for Utilities 7.5.0.1

Maximo for Nuclear Power 7.5.1

Maximo Mobile 7.5.1

Maximo Anywhere 7.5.1.1

Q2/Q3 2015

**IS/AOs  
7.6.x Releases  
Maximo 7.6.0.x**

**7.6.x**

Maximo for Life Sciences 7.6.x

Maximo Calibration 7.6.x

Maximo Service Provider 7.6.x

Maximo for Transportation 7.6.x

Maximo Asset Configuration Manager 7.6.x

Maximo Asset Management Scheduler 7.6.x

Maximo Enterprise Adapter for Oracle 7.6.x

Maximo Enterprise Adapter for SAP 7.6.x

Maximo Archiving Adapter for Optim 7.6.x

**7.5.x**

Maximo for Oil & Gas 7.5.1

Maximo Health, Safety, & Environment 7.5.1

Maximo Spatial Asset Management 7.5.0.1

Maximo Linear Asset Management 7.5.0

Maximo for Utilities 7.5.0.1

Maximo for Nuclear Power 7.5.1

Maximo Mobile 7.5.1

Maximo Anywhere 7.5.2

Q4 2015/Q1 2016

**IS/AOs  
7.6.x Releases  
Maximo 7.6.0.x**

**7.6.x**

Maximo for Life Sciences 7.6.x

Maximo Calibration 7.6.x

Maximo Enterprise Adapter for Oracle 7.6.x

Maximo Enterprise Adapter for SAP 7.6.x

Maximo Archiving Adapter for Optim 7.6.x

Maximo Service Provider 7.6.y

Maximo for Transportation 7.6.y

Maximo Asset Configuration Manager 7.6.y

Maximo Asset Management Scheduler 7.6.y

Maximo for Oil & Gas 7.6.x

Maximo Health, Safety, & Environment 7.6.x

Maximo Spatial Asset Management 7.6.x

Maximo Linear Asset Management 7.6.x

Maximo for Utilities 7.6.x

Maximo Anywhere 7.6.x

**7.5.x**

Maximo for Nuclear Power 7.5.1

Maximo Mobile 7.5.1



# Maximo Asset Management

Software as a Service offerings



# IBM Maximo Asset Management SaaS

*The industry leading asset management solution, now available as a SaaS offering*



**Full capabilities of Maximo available as a subscription based delivery model**

- Includes Maximo and mobile access using Maximo Everyplace
- Proactively plan, schedule & forecast work, with optional Maximo Scheduler
- Hosted by IBM using the SoftLayer Cloud infrastructure

**Reduced cost, eliminating Capital expense for Operation expense**

**Improve operations through better asset availability, reliability and asset utilization**

**Unify processes for wide-ranging asset management functions across multiple sites**

# IBM Service Engage

<https://www.ibm-serviceengage.com/asset-management/learn>


IBM Service Engage

Learn Explore Buy Extend


## Explore Enterprise Asset Management

Let us guide you. Which hero are you?


Live demonstration for preventative maintenance management software as a service (SaaS) that delivers reliability centered maintenance solutions.




**WORK REQUESTER**  
Phyllis

Report a problem Demo 


View service requests Demo





**MAINTENANCE SUPERVISOR**  
Lester

Review new service requests Demo 


Create, approve and assign a work order Demo

Assign work graphically 


Dispatch work via map 




**MAINTENANCE TECHNICIAN**  
Gus

Find my work Demo 

Record time for work order Demo



**SCHEDULER**  
Brianna

Schedule Work Demo 

1. Learn
2. Explore
3. Videos
4. Screen Shots
5. Self guided demo's
6. Blogs
7. Customer Testimonials
8. How to Buy
9. Additional Resources

Contact Us Live Chat Management SaaS Demo

# Maximo SaaS – Self Guided Demo



Welcome, Gus Walker

**YOUR WORK REINVENTED**  
Learn more with Service Request

EXPLORE IT NOW

**Go To Applications**

- Administration
- Assets
- Contracts
- Inventory
- Planning
- Self Service
- Service Desk
- Work Orders

**Favorite Applications**

- Work Order Tracking
- Quick Reporting
- Labor Reporting
- Assets

**Quick Insert**

- New Work Order
- Report Labor

**My Work Orders**

Work Order	Description	Asset	Reported By	Priority
1001	Machine making loud noise	CTX9000A	WALKER	
1003	luggage conveyor won't move	CTX9000B	WALKER	
1004	leak in men's room		PHYLLIS	
1005	short circuit power plugin		PHYLLIS	

**My Work Orders by Status**

Chart Type: BAR View By: Status

My Work Orders (By Status)

Status	Count	Percent (%)
INPRG	4	100

[List View](#)

< Explore

**Maximo Asset Management**

**Guided Demo**

About this demo

**Tasks**

- [Find my work](#)
- Record time for a work order

**Find my work**

Learn how a maintenance technician can easily locate their open work orders, identify the tasks to be performed, and enter the actual hours performed on the work order.

**Step 1** On the Start Center find the work orders in your **My Work Orders** section.

[Expand image](#)

Task 1, Step 1 of 4

javascript;

# IBM Maximo Inventory Insights

## Pre-configured inventory decision support system, delivered as a service



- Pre-configured analytics model to predict over-stock and out-of-stock conditions and generate **optimal stocking levels**
- **Pre-integrated** software agent automatically acquires necessary data from Maximo database and delivers it to the analytics engine
- Generates **insights** on stock levels, trends and possible outcomes
- Delivered as a service (**SaaS**)

**Reduces inventory holding costs up to 15-20% in first year**

**Increases asset availability and utilization by avoiding parts outages**

**Automatically generates optimal stock replenishment plan**



# Maximo Inventory Insights – Self Guided Demo

**Maximo Inventory Insights** Configure environment: Explorer ▾

05/12/2014 Date of Analysis Data Profile Cost ▾ Prioritize

<b>All Sites</b> Inventory	<b>14</b> % Increase	<b>77</b> % Decrease	<b>21.0M</b> Total Cost (\$)	↗ 476.0k ↘ -10.3M Financial Impact (\$)
-------------------------------	-------------------------	-------------------------	---------------------------------	--

**Reorder Point Analysis**

Increase ■  
Decrease ■  
Maintain ■

**Inventory Cost by Site**

FL-Miami	CO-CS	CA-Oak	NV-LV	CA-Fres	CA-SF	TN-Nash	DH-Colbs	GA-Atl	IL-Chcgo
----------	-------	--------	-------	---------	-------	---------	----------	--------	----------

1 - 10 of 14 ◀ Previous Next ▶

**Inventory Overview**  
To view a site, click the corresponding circle. Press Esc to reset the chart.

Service Engage >> Maximo Inventory Insights  
Getting Started >> Live Demo

[Free Trial](#)

## Guided Demo

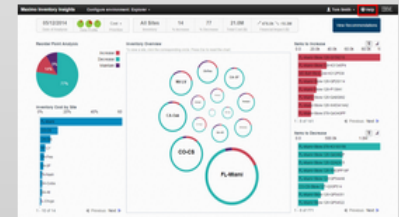
About this demo

### Tasks

- [Task 1 - View inventory profile](#)
- [Task 2 - View inventory optimization summary](#)

### Task 1 - View inventory profile

**Step 1:** To get familiar with the Maximo Inventory Insights user interface, click **Help**. Each feature on the user interface is explained.



[Expand image](#)

Task 1, Step 1 of 7 << < > >>

# Maximo Asset Management Release 7.6

Available December 12<sup>th</sup>, 2014

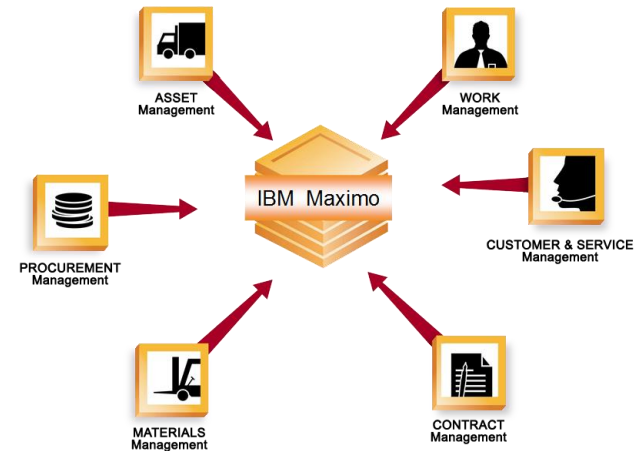


# Maximo Asset Management 7.6

Latest release of Maximo delivers best of class usability and navigation with advanced analytical capabilities leveraging Cognos Enterprise and improved BIRT reporting.

## Supporting increased maturity for Asset Management

- Data driven insights driving business improvement.
- Technology supporting advanced configurations and serviceability.



- **Improved Insights through Dashboards, reporting and key performance indicators**
  - Access to Cognos Enterprise 10.2.1
- **Extending capabilities to increase resource utilization and usability**
  - Crew management, Open Map API
  - Mobile capabilities through embedded Everyplace
- **Providing a broad choice of technology platforms and improved serviceability**
  - Multitenant architecture
  - IBM Installer Technology





# Maximo Asset Management 7.6

## Extending capabilities to increase resource utilization and usability

### User Experience

- Modern Look and Feel
  - Side-bar navigation
  - List page behavior
  - Less white space & horizontal scrolling
  - Application nesting
  - Configurable options
- Hover dialogs provide additional field detail without 'goto' application
- Start center portlets support multiple object result sets
- Exclusive Edit Mode - eliminates 'record updated by another user'

### Resource Management

- Crew Management Application
- Service Addresses for Assets and Locations
- Open MAP API – subscription to Bing or Google maps provides visibility to Work
- Scheduler performance improvements

### Flexibility

- Log tab in additional applications
  - PR/PO/Quick Reporting
- Scripting Enhancements
  - Expands to other customizations points of the objects and attributes and integration framework, including endpoints, object structures and exits

# Maximo Asset Management 7.6

## Improved Insights through Dashboards, reporting and key performance indicators

### ANALYTICS

- Cognos Enterprise 10.2.1 available for use with Maximo
- Out of the box content
  - Work Management, Asset, Asset Failure Inventory
- Leverages Maximo Security



### BIRT Reporting

- Latest version of BIRT– 4,3,1
  - Extended export file options
  - Record Limits to improve performance
- AdHoc Reporting
  - Supports Calculations
  - Usability improvements

### KPI's

- New application for end users
  - Historical Trends
  - Collaboration
  - Information on 'why' and 'how'
- Templates for consistency
  - Use substitution variables to easily create multiple records
- Individual Scheduling



# Maximo Asset Management 7.6

Providing a broad choice of technology platforms and improved serviceability

## TECHNOLOGY

- Leverage IBM Installer
  - Better installation and configuration help and progressive disclosure
  - Automation of common configuration scenarios, middleware re-configuration, ID and password changes, and language deployment
- A broad choice of platform support – (middleware/OS/Browsers)
  - iOS for Apple
  - Chrome
- **Mobile Access through embedded Everyplace access**

## SERVICEABILITY

- Message Improvements
- Crontask Load Balancing
- Maximo Management Interface Utility
- Expanded Logging – object/attribute details and in-session/user scoped logging
- Log Tags – indicate beginning and end of log session

## MULTITENANCY

- Supports individual configurations in a single instance
- Distinct Install Package – choice made at time of install
- Available for DB2 only
- Explicit separation of data – level above ORG/SITE
- Templates can be pushed out to tenants to promote best practices



# Platform Support – Maximo 7.6

	Supported	Dropped
<b>OPERATING SYSTEMS</b>	<p>AIX 7.1            Windows Server 2012, 2012 R2            Red Hat Enterprise Linux 6,7 (x86-64 &amp; zLinux)            SUSE Linux Enterprise Server 11 (x86-64 &amp; zLinux)</p> <p><b>NOTE: SOLARIS or HP-UX and 32-bit Linux versions are no longer supported</b></p>	<p>AIX 6.1            HP-UX 11i v3            Solaris 9,10, 11            Windows Server 2003, 2008, 2008 R2            Red Hat Enterprise Linux 5, 6            SUSE Linux Enterprise Server 10 ,11</p>
<b>DATABASES</b>	<p>IBM DB2 10.1, 10.5 (Workgroup and ESE)            Oracle 11g Rel2, 12c            Microsoft SQL Server 2012</p>	<p>IBM DB2 ESE 9.5, 9.7, 9.8            Oracle 10g Rel2, 11g Rel1, RAC 10g            Microsoft SQL Server 2008, 2008 R2</p>
<b>BROWSERS</b>	<p>Internet Explorer 8, 9            Internet Explorer 10, 11 (standards mode)            Mozilla Firefox 31  <b>Google Chrome 36 ←-- New</b>  <b>Safari 7 (MAC only) ←-- New</b>            JRE 1.7.0 fix pack 55, 65</p>	<p>Internet Explorer 7.0            Mozilla Firefox 3.6, 4.0, 10.0, 17.0, 24.0</p>
<b>Application Servers</b>	<p>IBM WebSphere 8.5, 8.5.5            Oracle WebLogic Server 12c            JDK 1.7.0</p>	<p>IBM WebSphere 7.0, 8.0            Oracle WebLogic Server 10.3.3</p>
<b>REPORTING</b>	<p>BIRT 4.3.1            COGNOS 10.2.1</p>	



# Maximo 7.6 Supported Upgrade/Migration Paths

- Go to the Maximo Upgrade Resources page for details:

[http://www-01.ibm.com/support/docview.wss?rs=3214&context=SSLKT6&q1=upgrade+resource&uid=swg21266217&loc=en\\_US&cs=utf-8&lang=en](http://www-01.ibm.com/support/docview.wss?rs=3214&context=SSLKT6&q1=upgrade+resource&uid=swg21266217&loc=en_US&cs=utf-8&lang=en)



## **Release 6.2**

- 6.2.8>7.1>7.1.1.13>7.5>7.5.0.7>7.6

## **Release 7.1**

- 7.1>7.1.1.13>7.5>7.5.0.7>7.6

## **Release 7.5**

- 7.5>7.5.0.6 > 7.6

Or

- 7.5>7.5.0.7 > 7.6

Maximo 7.5 Industry Solutions and add-ons are certified to run-on Maximo 7.6 non-MT enabled (May require an incremental patch level)

# Industry Solutions and Add-ons Release 7.6.



# Maximo for Aviation 7.6.x

A new industry solution that addresses the business and operational needs of the aviation market.

New



- ❖ Civilian Airlines
- ❖ Government / Military operators
- ❖ MRO organizations
- ❖ Fixed wing and rotary wing
- ❖ Built on proven Maximo capabilities
- ❖ Developed with industry design partners
- ❖ Planned availability in mid 2015



# Maximo Scheduler 7.6.x

An end-to-end work management tool that helps optimally plan, schedule, assign, and dispatch work as well as communicate with field resources.

**New applications will enable location and asset centric planning and scheduling, while simplifying/enhancing the user experience.**

## Planned for mid 2015

- ❖ Repair Location Capacity Planning
- ❖ Repair Location Graphical Assignment
- ❖ Core Maximo PM costing
  - Includes Nested Job Plans

## Planned for late 2015

- ❖ Asset Scheduling
  - Work Orders and PM forecasts viewed by asset hierarchy
  - Improved Gantt tools and navigation (group/filter/sort/etc.)
  - Support Maximo ACM PM forecasting and costing





# Maximo for Utilities 7.6.x

A solution that offers integrated work and asset management including Compatible Unit Estimating (CUE), meter management and GIS.

## Simplifying the User Experience

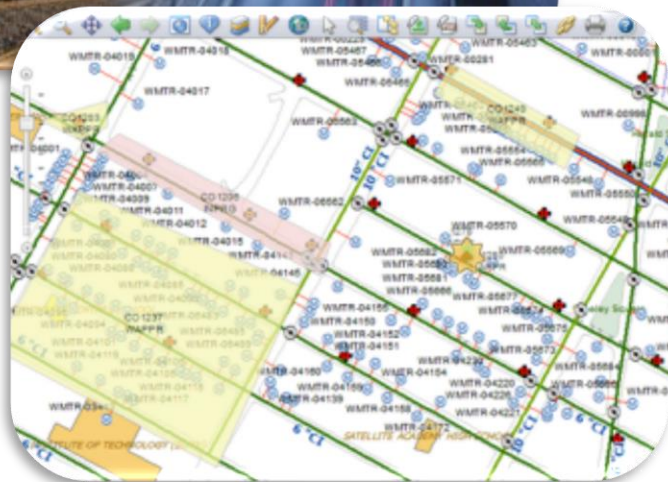
**Engineers and Supervisors will be able to graphically create designs and construction estimates 60% faster than utilizing the current Maximo tabular views.**

- New CUE graphical interface that enhances the user's experience.
- CUE process improvements to gain greater efficiencies.
- Multi-tenant enabled leading to reduced costs in maintaining a single environment.



# Maximo Spatial and Linear Asset Manager 7.6.x

Enhanced interaction between the Spatial and Linear solutions to enable better visibility and control on different asset types.



## Location Services

Technicians can utilize Spatial and Linear together on a map gaining greater efficiencies in work planning and improved decision-making resulting in a reduction of operational expenses.

- Enhance the ability to interact Linear assets within Spatial enabling users to view the relationship of linear segments on a map.
- Exploit the latest technology offered by Esri ArcGIS to improve time to value.
- Multi-tenant enabled leading to reduced costs in maintaining a single environment.



# Maximo Oil and Gas 7.6.x

A solution for all segments of the Chemicals & Petroleum industry providing operational intelligence and realizing operational excellence through standardization, convergence, collaboration, and the adoption of better operational practices.

## Promoting a new User Experience

**Enhancing the user experience with mobility, new visualization tools, analytics, KPI's and updated applications.**



- Safety Management teams can evaluate the impact of a new incident on current and predicted safety performance within 24 hours of incident generation.
- Plant operations personnel can see a complete overview of operational risks and key performance indicators without leaving Maximo and avail themselves of standards such as ISO 14224.
- Asset management personnel are able to track asset classes typically held external to Maximo and can achieve a 30% reduction in the number of specialist/niche applications.
- Multi-tenant enabled leading to reduced costs in maintaining a single environment.

# Maximo Health, Safety and Environment Manager 7.6.x

A solution for integrating Health, Safety and Environment processes with work and asset management.



## Promoting a new User Experience

**Enhancing the user experience with mobility, new visualization tools, analytics, KPI's and updated applications.**

- Maximo Anywhere Incident Manager app.
- Incident Management related KPIs and HSE predictive analytics.
- Process safety related balanced scorecard KPI.
- Operational risk assessment.
- Support of new asset classes within Maximo.
- Multi-tenant enabled leading to reduced costs in maintaining a single environment.

# Maximo Anywhere 7.5.x

Next-generation mobile solution that gets the right information to the right people at the right time to improve service quality, increase customer satisfaction and reduce the costs and complexities of daily operations.



## Investing in Mobile Applications

**Deliver additional lightweight, role-focused apps to better enable mobile workers.**

- Administration Apps that aid in the ability to implement and run mobile (more easily manage queries, add users/groups).
- ★ Inspection app designed to accommodate either task or specification based inspections.
- ★ Physical Count app offers customers the means to achieve accurate control over critical storeroom stock levels.
- Windows Support in addition to iOS and Android

★ Apps currently on ISM library



# Maximo Anywhere 7.6.x

Next-generation mobile solution that gets the right information to the right people at the right time to improve service quality, increase customer satisfaction and reduce the costs and complexities of daily operations.

## Expanding the Mobile Experience

**Additional Supply Chain applications and enhancements to existing Work Management apps contributing to a robust asset management mobile experience.**

- Inventory Usage / Receipt app to manage and keep track of inventory leading to greater efficiencies and lower costs.
- Asset Audits / Asset Management app for better asset inventory control reducing inventory costs and optimizing inventory levels.
- Enhancements to existing apps with new mapping and linear asset functionality simplifying the visibility of data out in the field.



# Resources



# Technical Resource: Service Management Connect (SMC)



Virtual Site for *Communication of* and *Collaboration on*  
Maximo **Technical** Information



Enables YOU to **stay current** with the latest technical information on Maximo, while **networking** with IBMers, Business Partners and other Maximo Clients!

<http://ibm.co/nokOHc>





# Technical SMC Components

Site	Description	Short URL
<b>Wiki</b>	<b>Detailed repository</b> of technical information, including customization code examples	<a href="http://ibm.co/YNOgjG">http://ibm.co/YNOgjG</a>
<b>Blogs</b>	<b>Short articles</b> on new product features, hot topics and technical hints/tips	<a href="http://ibm.co/GGGyzu">http://ibm.co/GGGyzu</a>
<b>User Forum</b>	Ask, review and respond to <b>questions</b> on best practices, configuration and functionality features	<a href="http://ibm.co/LqosRf">http://ibm.co/LqosRf</a>
<b>Open Development</b>	<b>Collaboration</b> location for IBM Development and clients	<a href="http://ibm.co/16dzK7m">http://ibm.co/16dzK7m</a>
<b>Maximo Asset Management Group</b>	Dynamic <b>Network</b> of over 800 Maximo clients, Business Partners and IBMers	<a href="http://ibm.co/xN55sO">http://ibm.co/xN55sO</a>



## Bookmarks: Key Maximo Pages

Maximo Support Home Page

[http://www-947.ibm.com/support/entry/portal/product/tivoli/maximo\\_asset\\_management?productContent=-2077426143](http://www-947.ibm.com/support/entry/portal/product/tivoli/maximo_asset_management?productContent=-2077426143)

Maximo Support Resources

<http://www-304.ibm.com/support/docview.wss?uid=swg21418666>

Maximo 7.6 Resources

<http://www-01.ibm.com/support/docview.wss?uid=swg21692646>

Maximo Upgrade Resources

<http://www-01.ibm.com/support/docview.wss?uid=swg21266217>

Maximo Product Configuration Matrix

[http://www-01.ibm.com/support/docview.wss?rs=3214&context=SSLKT6&q1=language&uid=swg27014419&loc=en\\_US&cs=utf-8&lang=en](http://www-01.ibm.com/support/docview.wss?rs=3214&context=SSLKT6&q1=language&uid=swg27014419&loc=en_US&cs=utf-8&lang=en)

IBM Support RSS Feeds

<https://www-01.ibm.com/software/support/rss/tivoli/index.html>



## Bookmarks: Key Maximo Pages

Maximo SMC Home Page

<https://www.ibm.com/developerworks/servicemanagement/am/index.html>

Maximo Wiki

<https://www.ibm.com/developerworks/community/wikis/home?lang=en#!/wiki/IBM%20Maximo%20Asset%20Management>

Maximo User Forum

<https://www.ibm.com/developerworks/community/forums/html/forum?id=11111111-0000-0000-0000-000000001119>

Maximo Technical Blogs

<https://www.ibm.com/developerworks/community/blogs/a9ba1efe-b731-4317-9724-a181d6155e3a/?lang=en>

Maximo Documentation

[http://www-01.ibm.com/support/knowledgecenter/SSLKT6/sslkt6\\_welcome.html?lang=en](http://www-01.ibm.com/support/knowledgecenter/SSLKT6/sslkt6_welcome.html?lang=en)

RFE

[https://www.ibm.com/developerworks/rfe/?BRAND\\_ID=90](https://www.ibm.com/developerworks/rfe/?BRAND_ID=90)

Thank You





# Acknowledgements and Disclaimers

**Availability.** References in this presentation to IBM products, programs, or services do not imply that they will be available in all countries in which IBM operates.

The workshops, sessions and materials have been prepared by IBM or the session speakers and reflect their own views. They are provided for informational purposes only, and are neither intended to, nor shall have the effect of being, legal or other guidance or advice to any participant. While efforts were made to verify the completeness and accuracy of the information contained in this presentation, it is provided AS-IS without warranty of any kind, express or implied. IBM shall not be responsible for any damages arising out of the use of, or otherwise related to, this presentation or any other materials. Nothing contained in this presentation is intended to, nor shall have the effect of, creating any warranties or representations from IBM or its suppliers or licensors, or altering the terms and conditions of the applicable license agreement governing the use of IBM software.

All customer examples described are presented as illustrations of how those customers have used IBM products and the results they may have achieved. Actual environmental costs and performance characteristics may vary by customer. Nothing contained in these materials is intended to, nor shall have the effect of, stating or implying that any activities undertaken by you will result in any specific sales, revenue growth or other results.

© **Copyright IBM Corporation 2015. All rights reserved.**

- **U.S. Government Users Restricted Rights - Use, duplication or disclosure restricted by GSA ADP Schedule Contract with IBM Corp.**

IBM, the IBM logo, ibm.com, Interconnect and Maximo are trademarks or registered trademarks of International Business Machines Corporation in the United States, other countries, or both. If these and other IBM trademarked terms are marked on their first occurrence in this information with a trademark symbol (® or ™), these symbols indicate U.S. registered or common law trademarks owned by IBM at the time this information was published. Such trademarks may also be registered or common law trademarks in other countries. A current list of IBM trademarks is available on the Web at “Copyright and trademark information” at [www.ibm.com/legal/copytrade.shtml](http://www.ibm.com/legal/copytrade.shtml)

Other company, product, or service names may be trademarks or service marks of others.

- **REMINDER:** Please follow the guidelines for copying third party materials. Third party screen shots, logos, presentations and website content are copyrighted materials owned by the third party, and as such we need permission from the third party to use them. Also, be sure the information you put on a chart is verifiable. Be sure to cite the source on your deck when using words, ideas, facts, photos, news clips or other expression that did not originate from yourself. This applies even if the content is publicly available and not confidential. If you have any questions, please contact your IP Attorney.