

*Technology that smooths the path to network computing*



## IBM WorkSpace On-Demand 2.0

---

### **Highlights**

---

***Helps reduce cost of ownership through centralized control***

***Provides a standardized environment that can be tailored to the needs of each user***

***Helps increase productivity and reduce user training time***

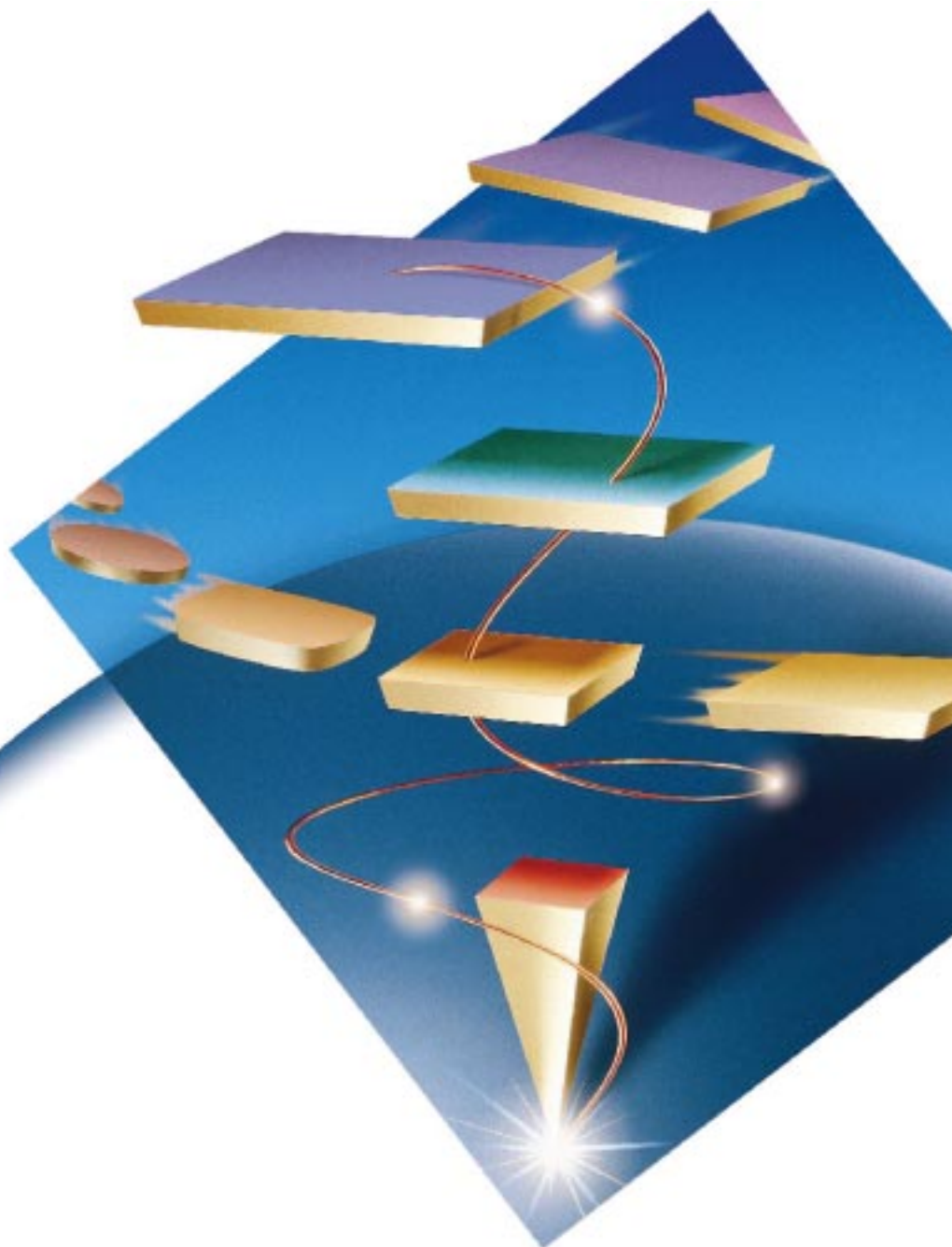
***Allows software updates and provides configuration capability from servers rather than on every client***

***Supports existing workstation hardware, applications, network infrastructure and new Java network computing applications***

***Includes broad support for clients: IBM Network Stations, Windows 95 and Windows NT***

***Is Tivoli® Ready***

***Is Year 2000 ready¹***



e-business

## *Build on what you have.*

IBM® WorkSpace On-Demand™, the network computing environment for Intel servers, enables a comfortable transition from the traditional client/server model to network computing and Java™. IBM WorkSpace On-Demand consists of a client environment and server utilities, which administer the client environment. WorkSpace On-Demand allows you to access network applications, intranets and the Internet. This means existing supported hardware and software can be used, with the server acting as a control center, helping to reduce the cost of systems management and maintenance.

### **What it is**

WorkSpace On-Demand is an OS/2® Warp Server-based solution for deployment and management of desktop environments for enterprise customers who need to manage the transition from client/server to network computing and Java. WorkSpace On-Demand is made up of two components.

The first component is the client operating system that runs on the network computer. A network computer can be a network PC, such as the IBM PC 300 GL or an x86-based (or compatible) workstation used as a thin client. In this case, thin client is defined as a diskless Intel-based (or compatible) PC which gets all its software components from the server (no software resides on the client machine).

The second component, the WorkSpace On-Demand Manager, is a set of server-side utilities used to install, configure and maintain the network client hardware and software. All operating system software, applications and data are stored on the server, simplifying updates and administration.

### **What it does**

WorkSpace On-Demand is tuned specifically for network computing. It provides a graphical user interface (GUI) for users, the processing power of the Intel PC and information access on any server in your network with the latest Internet technologies. At the same time, it can lower cost of ownership by eliminating the need to distribute software to clients and to store unique files at the client hard drive, permitting PC hardware interchangeability. Users can access their applications and data from any client system in the network domain.

### **What Java has to do with it**

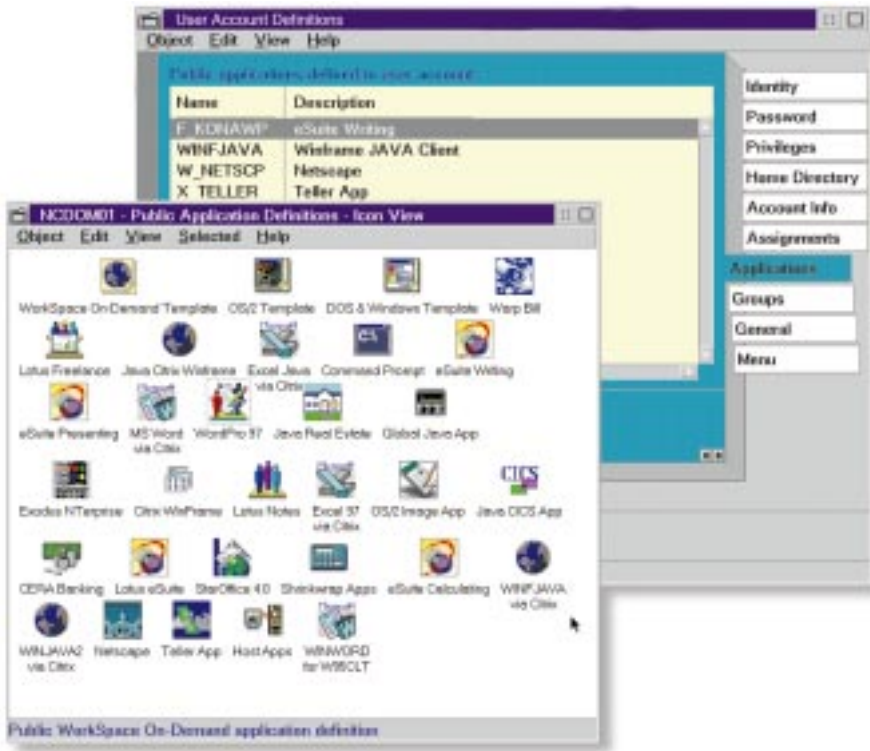
The infrastructures of WorkSpace On-Demand and OS/2 Warp Server are built to provide information systems on a global scale – to help make network computing work the way it should today. And Java is the key. Java is the language of network computing. WorkSpace On-Demand has the Java Virtual Machine built right into the operating system. From the client desktop, your users can take advantage of the numerous Java applications being introduced today, and enjoy true network computing now.

### **What it works with**

WorkSpace On-Demand supports native OS/2 and Java applications as well as Microsoft® Windows® 3.x and DOS applications and it provides access to 3270 and 5250 emulations. Access to Windows 95 and Windows NT® applications can also be provided, either with the Windows terminal server that uses the Citrix add-on (from a third-party supplier), or with the Windows client feature that will be added to support Windows 95 and Windows NT 4.0 clients in 2Q99. For access with the Citrix add-on, simply use the Citrix Java client for the WorkSpace On-Demand 2.0 client.

### **Where it works**

WorkSpace On-Demand has the extraordinary capability to turn the computer user into a roaming client user. Users can log on to any system on the local network and have access to the desktop layout and applications specified in their profile. The user desktop thus becomes any place that has a connection to the network. So users work just as they always have, yet the applications they use now reside on and are launched by the server. This simple, yet significant, change is made possible through remote IPL (RIPL) or Dynamic Host Configuration Protocol (DHCP) Boot, making it easier for users to connect. This thin client environment prevents users from damaging any critical files or changing a desktop configuration. WorkSpace On-Demand customers benefit from reduced administration and user support costs.



Workspace On-Demand Manager utilities: applications assignment to a user.



Example of a customized Workspace On-Demand client desktop.

### What your choices are

Workspace On-Demand has a flexible interface that can be tailored to users' needs, giving them a practical way to access their most frequently-used applications. Workspace On-Demand 2.0 offers a common desktop across various clients (Workspace On-Demand 2.0, Windows) and is especially suited to the needs of transaction-oriented users.

By including Network Station® Manager (NSM) Version 3.0, Workspace On-Demand 2.0 provides a central point of management for IBM Network Stations, network computers and Intel-based workstations used as thin clients.

### How it solves your network computing problems

Workspace On-Demand gives you the future of network computing today, with savings of up to 39 percent on ownership costs.<sup>2</sup> Plus, you can get the productivity and ease of use of a PC with the cost savings and centralized management environment of a mainframe. If that's not enough, Workspace On-Demand supports what you already have, as well as new Java applications as they become available. In all, your network computing needs may be solved, making you look like a hero.

---

## IBM WorkSpace On-Demand at a glance

---

<b>Hardware requirements</b>	<ul style="list-style-type: none"><li>• 486/33-MHz processor, or higher</li><li>• At least 16 MB of memory (RAM) for the client and 48 MB for the server</li><li>• Preboot Execution Environment (PXE)/DHCP-capable or RIPL-capable LAN adapter</li><li>• 45 MB available disk space on the server</li><li>• Swap space, equal to three times the amount of RAM</li></ul>
<b>Software requirements</b>	<ul style="list-style-type: none"><li>• OS/2 Warp Server 4, including Fixpack 22, or higher</li><li>• OS/2 Warp Server Advanced, Version 4, including Fixpack 22, or higher</li><li>• OS/2 Warp Server Advanced, Version 4, with symmetric multiprocessing (SMP) including Fixpack 22, or higher</li></ul>
<b>Hardware support</b>	<ul style="list-style-type: none"><li>• Network PC: IBM PC 300 GL</li><li>• Traditional PCs used as thin clients – 486 minimum with or without local hard disk</li></ul>
<b>Software support</b>	<ul style="list-style-type: none"><li>• DOS, Windows 3.1, OS/2 and Java applications</li><li>• Applications for Windows 95 and Windows NT, through third-party products, such as Citrix Winframe</li><li>• WorkSpace On-Demand 2.0 client includes Java 1.1.6 and Netscape Communicator 4.04</li></ul>
<b>Components</b>	<ul style="list-style-type: none"><li>• WorkSpace On-Demand 2.0 client</li><li>• WorkSpace On-Demand 2.0 Manager contains server utilities for administration</li><li>• WorkSpace On-Demand Windows client feature (add-on feature in 2Q99)</li></ul>
<b>Client support</b>	<ul style="list-style-type: none"><li>• WorkSpace On-Demand 2.0 client</li><li>• IBM Network Station supported by Network Station Manager, Version 3.0 for WorkSpace On-Demand</li><li>• Windows 95 and Windows NT, add-on features in 2Q99</li></ul>

---

## IBM WorkSpace On-Demand benefits

---

<b>Can improve productivity</b>	<ul style="list-style-type: none"><li>• Secure personalized access from any client system in the network domain for native PC applications</li></ul>
<b>Quick upgrades</b>	<ul style="list-style-type: none"><li>• Rapid deployment of latest version of desktop environments</li><li>• Administrators can provide improved data and application security and availability since no data or applications reside on the client</li></ul>
<b>Low support costs</b>	<ul style="list-style-type: none"><li>• Administrators can reduce support costs through server managed clients</li></ul>
<b>Can extend hardware life</b>	<ul style="list-style-type: none"><li>• Runs on existing equipment, extending PC life and reducing hardware turnover</li></ul>
<b>Self-paced transition</b>	<ul style="list-style-type: none"><li>• Provides a managed transition from client/server to network computing and Java</li></ul>

## For more information

Call your local IBM representative or business partner for details on implementing WorkSpace On-Demand in your environment, and visit our Web site at [www.software.ibm.com/enetwork/workspace](http://www.software.ibm.com/enetwork/workspace).



© International Business Machines Corporation 1998

IBM Corporation  
11400 Burnet Road  
Austin, TX 78758

Produced in the United States of America  
10-98  
All Rights Reserved

The e-business logo, eNetwork, IBM, Network Station, OS/2 and WorkSpace On-Demand are trademarks of International Business Machines Corporation in the United States and/or other countries.

Tivoli is a trademark of Tivoli Systems, Inc. in the United States and/or other countries.

Java and all Java-based trademarks and logos are trademarks or registered trademarks of Sun Microsystems, Inc. in the U.S. and other countries.

Microsoft, Windows and Windows NT are trademarks of Microsoft Corporation.

Other company, product and service names may be trademarks or service marks of others.

<sup>1</sup>Year 2000 ready means that the IBM product, when used in accordance with IBM-associated documentation, is capable of correctly processing, providing and/or receiving date data within and between the twentieth and twenty-first centuries, provided that all other products (for example, hardware, software and firmware) used with the IBM product properly exchange accurate date data with it.

<sup>2</sup>Source: 1998 Gartner Group Total Cost of Ownership conference (March 30 – April 1).

All statements regarding IBM's future direction and intent are subject to change or withdrawal without notice, and represent goals and objectives only. Contact your IBM local Branch Office and IBM Authorized Reseller for the full text of a specific Statement of General Direction.



Printed in the United States on recycled paper containing 10% recovered post-consumer fiber.



G325-3825-01