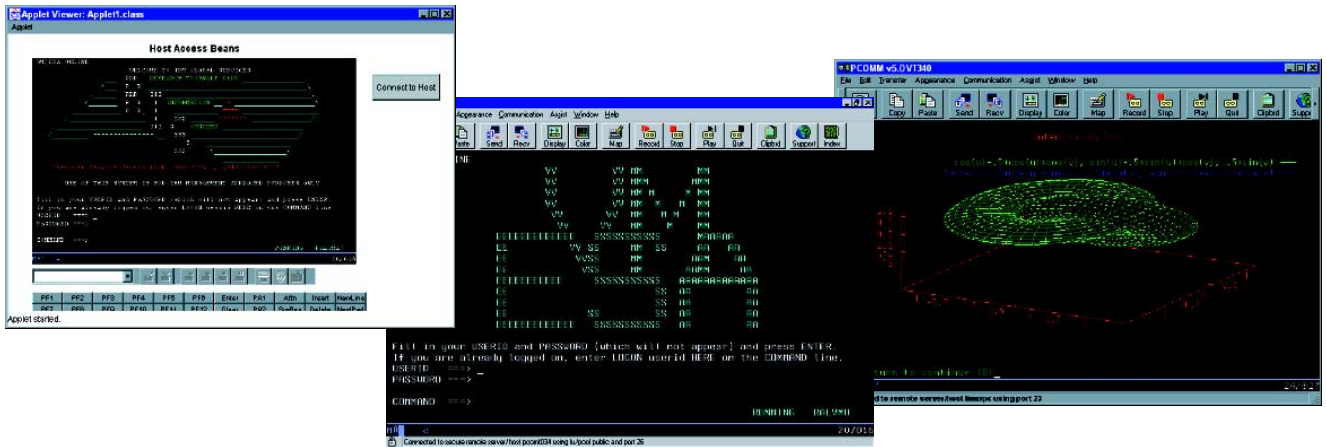


IBM Personal Communications



Multiple Personal Communications sessions illustrate SSL support, VT340 graphics and a custom application using Host Access Beans for Java.

Highlights

- **Provides market-leading host connectivity and emulation**
- **Includes tools to easily combine host and desktop applications**
- **Helps you capitalize on existing investments and extend applications to Web-based technologies**
- **Enables users to have access to mission-critical business systems**
- **Is Microsoft Windows 2000 certified**

IBM Personal Communications, available on Microsoft® Windows® platforms (see list of platforms on page seven) and IBM OS/2® is a host communication and terminal emulation package that features 3270, 5250 and VT emulation; SNA application support; integration; and SNA and TCP/IP connectivity. Personal Communications is a key component of both Host Access Client Package and IBM WebSphere® Host Integration Solution. It helps enable secure access to mission-critical business systems for virtually every user.

Personal Communications can bring the power of personal networking to the workstation and can exploit existing networking capabilities. This includes SNA applications and technologies, such as advanced program-to-program communication (APPC) and High-Performance Routing (HPR). It also provides TCP/IP support and an extensive application programming interface (API) set, offering Host Access Class Library (HACL) and Emulator High-Level Language Applications Programming Interface (EHLLAPI) through programming languages like C++ and VBScript, and Java™ technology.

Key enhancements for IBM Personal Communications

The key enhancements for Personal Communications are:

- Microsoft Windows 2000 Certification
- Macro conversion to IBM WebSphere Host On-Demand software
- Express logon function
- Smart Card support
- Associated 3270 printer support

Industry-leading emulation

Personal Communications continues to set the standard for terminal access to business-critical applications and data on different host systems, taking advantage of 3270, 5250, TN3270E, TN5250, VT52, VT100, VT220 and VT340 emulation.

Improved development capabilities

Personal Communications supports Host Access Beans for Java (based on the JavaBeans™ specification), VB automation objects and VBScript. Building on Personal Communications leadership in object-oriented programming, the HACL API provides a Java programming interface.

With a Java interface for HACL and Host Access Beans for Java, you have the ability to create applications for both Personal Communications and WebSphere Host On-Demand, allowing great flexibility while preserving your investments for the future.

Industry-standard APIs

The Personal Communications extensive API set has been further enhanced by improving EHLLAPI application performance and by the inclusion of industry-standard 32-bit EHLLAPI APIs, as well as Windows HLLAPI (WinHLLAPI) APIs.

Security when you need it most

Personal Communications supports Secure Sockets Layer (SSL), Version 3.0. When combined with support for load-balancing Service Location Protocol (SLP)—found in products such as IBM Communications Server for Windows NT® and NetWare for SAA®—Personal Communications can be configured to connect to only SSL-enabled servers, helping to ensure more network security.

Benefits

Personal Communications helps to ensure that you are ready to make the transition to e-business with tools you can use today that provide:

- *Network integration*
Personal Communications can handle a wide variety of protocols, including ISDN, HPR, SNA and IP—to help you connect users to the data they need.
- *Connectivity*
Personal Communications can provide a fast, network-efficient connection to employees, customers, suppliers and trading partners. Replace outdated, disparate communication tools with one solution for access to mission-critical business systems.
- *e-business tools*
Personal Communications Java Interface for HACL helps you make the change to a Web-to-host environment easier and more efficient. Using this tool can help you preserve your application development investment as you move to other IBM WebSphere Host Integration Solution products. VBScript capabilities can enable you to capitalize on existing investments in the Visual Basic environment and extend applications to Web-based technologies.

- *Platform independence*

Personal Communications provides the same look and feel whether it's running on a Windows 32-bit operating system or on OS/2. It supports enterprise server and midrange host connectivity and can enable you to easily access host applications with new Web-to-host technologies.

- *Open system architecture*

From EHLLAPI to TCP/IP to SNA, Personal Communications provides industry-standard solutions to help extend your investments into the future.

- *Extensive language support*

Personal Communications is multilingual. Available in 22 languages, it includes double-byte character set (DBCS) languages. It supports the euro sign and includes extensive keyboard and code-page support.

- *A single IBM WebSphere Host*

Integration Solution

For a complete answer to Web-to-host access in the industry, team Personal Communications with other products in IBM WebSphere Host Integration Solution, including:

- IBM WebSphere Host On-Demand
- IBM Screen Customizer
- IBM WebSphere Host Publisher
- IBM Communications Server

- *Microsoft Windows 2000 certification*

Personal Communications now takes advantage of the Microsoft Windows 2000 installer technology. Benefits of this technology include self-repairing installation, easier software deployment and management, as well as a tightly controlled network environment.

Easy ordering—CD-ROM package options

Personal Communications is available only by purchasing IBM Host Access Client Package or IBM WebSphere Host Integration Solution. To simplify ordering and installation, Personal Communications is packaged on a single CD-ROM for 3270, 5250 and VT environments.

For more information

To learn more about IBM Personal Communications, visit:

ibm.com/software/network/pcomm

IBM Personal Communications features and functions

	Windows platforms, Version 5.5			OS/2, Version 4.3.1	
	3270	5250	VT	3270	5250
Installation and customization					
EEE 802.2	x	x		x	x
3174 Peer Communication (LAN over coaxial) (Not supported on Windows 2000)	x	x	x	x	x
IPX/SPX	x			x	
NWSAA Client and Communications Server for Windows NT client					
• APPC	x	x			
• LUA	x				
TCP/IP	x	x	x	x	x
SNA Distributed Function Terminal (DFT)	x			x	
Non-SNA DFT	x			x	
Control Unit Terminal (CUT)				x	
Twinaxial		x			x
IBM @server iSeries™ and S/3x Console (asynchronous and twinaxial)		x			x
SDLC (including auto-dial capability)	x	x		x	x
Wide Area Connector (WAC)	x	x	x	x	
SNA over asynchronous	x	x		x	x
Asynchronous	x			x	
Asynchronous for IBM Global Network® (IGN)	x			x	
Home3270	x			x	
Hayes Autosync	x	x		x	x
Hayes Autosync II (Windows 95 and Windows 98 only)	x	x			
Microsoft SNA Server					
• FMI	x				
• Windows APPC	x	x			
• Windows LUA	x				
APPC3270 (LU2 over APPC)	x			x	
IBM AnyNet® (SNA over TCP/IP)	x	x		x	x
3270 pass-through by iSeries	x			x	
ISDN, X.25	x	x		x	x
PCI MPA	x	x		x	x
Enterprise extender	x	x		x	x
3270 pass-through over twinaxial	x			x	
OEM adapter support	x	x	x	x	x
Print support					
Host print	x	x	x	x	x
• 3812 printer emulation		x			x
• Host print transform		x			x
• ASCII transparent	x	x	x	x	x
• Printer definition table (PDT)	x	x		x	x
Screen print	x	x	x	x	x
Associated printer support	x				
ZIPPRINT	x			x	

IBM Personal Communications features and functions (continued)

	Windows platforms, Version 5.5			OS/2, Version 4.3.1	
	3270	5250	VT	3270	5250
Installation and customization					
Remote unattended installation (CID)				X	X
Silent installation	X	X	X		
Microsoft SMS support	X	X	X		
Installation and configuration from LAN server	X	X	X	X	X
Automatic DFT connection				X	
Simultaneous sessions with different code pages and keyboard languages	X	X	X	X	X
Automatic logon		X			X
26 display and printer emulation sessions	X	X	X	X	X
Selectable display sizes	X	X	X	X	X
VT52/VT100/VT220/VT340 emulation			X		
Toolbar customization	X	X	X	X	X
Text configuration files	X	X	X	X	X
Configuration update files	X	X			
Initial configuration definitions	X	X			
CM/2 migration	X	X		X	X
Tivoli® certified	X	X			
System policy	X	X	X		
Microsoft Windows Installer	X	X	X		
Networking function					
SNA data compression (emulator sessions)	X	X			
SNA data compression (LU 6.2 sessions)	X	X			
Session-level encryption				X	
VPD/EVPD, Alert	X			X	
Response time monitor (RTM)	X			X	
Command start/stop/query SNA node	X	X		X	X
Load balancing, hot standby, SLP for IPX	X	X			
SSL, Version 3.0	X	X	X	X	X
Client certification authentication for SSL	X	X	X	X	X
HPR routing over IP for nondisruptive backup	X	X			
Automatic link reactivation	X	X			
IBM APPN® end node	X	X		X	X
APPN LEN node					
HPR	X	X		X	X
Dependent LU requester (DLUR)	X	X		X	X
Express logon function	X	X	X		
Smart Card support	X	X	X		
Utilities					
3174 port 0 utility				X	
Administration tools	X	X	X	X	X
Information bundler for problem determination	X	X	X	X	X
Internet service	X	X	X		
Enhanced log or trace viewer	X	X	X		
Microsoft Windows 2000 certified	X	X	X		
Macro conversion tool for Host On-Demand	X	X	X		

IBM Personal Communications features and functions (continued)

	Windows platforms, Version 5.5			OS/2, Version 4.3.1	
	3270	5250	VT	3270	5250
User interface					
Graphical, customizable toolbar feature	x	x	x	x	x
Rule line	x	x	x	x	x
Menu bar customization	x	x	x	x	x
Pop-up keypad and hot keys	x	x	x	x	x
3-D hot spots	x	x	x	x	x
Macro record and play	x	x	x	x	x
Graphical keyboard remapping	x	x	x	x	x
• NLS key-caps support	x	x	x	x	x
• 122-key keyboard support				x	x
• DBCS unique keyboard support	x	x			
Customizable mouse	x	x	x	x	x
Drag-and-drop color remapping	x	x	x	x	x
Crisp fonts, automatic sizing, fixed font size	x	x	x	x	x
Display setup, view setup, window setup	x	x	x	x	x
Internet hot spots	x	x	x	x	x
OLE/ActiveX objects	x	x	x		
APL support	x			x	
Automation and scripting utility (CMMOUSE)	x	x	x	x	x
Accessibility for handicapped users	x	x	x	x	x
Status bar	x	x	x		
Euro sign	x	x		x	x
Intelligent spreadsheet support	x	x	x	x	x
Blink attribute support	x	x	x		
VT history	x	x	x		
Multilanguage support	x	x	x		
iSeries application support					
PC organizer and text assist		x			x
Enhanced nonprogrammable terminal user interface (ENPTUI)		x			x
Programming interfaces					
DOS EHLAPI	x	x	x	x	x
EHLAPI, DDE, PCSAPI, CPI-C, APPC	x	x	x	x	x
REXX EHLAPI support	x	x	x	x	x
EasyREXX for HLLAPI				x	x
Visual Basic scripting	x	x	x		
SRPI	x			x	
REXX PSCAPI support	x	x	x	x	x
Host Access Class Library (HACL)	x	x	x	x	x
TCP62	x	x		x	x
Request Unit Interface (RUI)	x			x	
Session Level Interface (SLI)	x			x	
WinHLLAPI support	x	x	x		
32-bit HLLAPI	x	x	x		
Convert macro to VBScript or XML	x	x	x		
Host Access Beans for Java	x	x	x	x	x
ODBC 3.0 for SNA using IBM DB2 Connect™	x	x			

IBM Personal Communications features and functions (continued)

	Windows platforms, Version 5.5			OS/2, Version 4.3.1	
	3270	5250	VT	3270	5250
File transfer					
File transfer through emulator session	x	x	x	x	x
Command line invocation	x	x			
Lists	x	x	x		x
Templates	x	x	x	x	x
Import/export	x			x	
Data transfer by SNA (SQL file transfer)		x			x
ASCII—host file transfer					
• XModem		x			
• XModem1K			x		
• YModem			x		
• YModemG			x		
Data transfer by IP		x			
Host graphics					
GDDM and GOCA	x			x	
Programmed symbol set	x			x	
Vector	x			x	
Copy graphics images	x			x	
VT340 ReGIS and Sixel support			x		

IBM Personal Communications for Windows, Version 5.5 at a glance

Hardware requirements

Minimum 24MB RAM recommended for Windows 95 and Windows 98, 32MB RAM for Windows NT, 64MB RAM for Windows 2000 Professional and Windows Me and 256MB RAM for Windows 2000 servers

- 486 or higher system processor
- 40MB fixed disk space minimum—additional space may be required depending on installation options

Software requirements

Supported by the following desktop platforms:

- Windows 95
- Windows 98 or Windows 98SE
- Windows Millennium Edition (Windows Me)
- Windows NT 4.0
- Windows 2000
- OS/2 (Personal Communications, Version 4.3.1)

Communication with the following types of server or gateway:

- IBM Communications Server for OS/2 WARP®
- IBM Communications Server for Windows NT and Windows 2000
- IBM Communications Server for AIX®
- Novell NetWare for SAA, Version 2.0 or higher
- Microsoft SNA Server
- Direct connection to the host



© Copyright IBM Corporation 2001

IBM Corporation
Software Communications
Route 100
Somers, NY 10589
U.S.A.

Produced in the United States of America
08-01
All Rights Reserved

AIX, AnyNet, APPN, DB2 Connect, the e-business logo, IBM, the IBM logo, IBM Global Network, iSeries, OS/2, OS/2 WARP, SAA and WebSphere are trademarks or registered trademarks of International Business Machines Corporation in the United States, other countries or both.

Tivoli is a trademark of Tivoli Systems Inc. in the United States, other countries or both.

BackOffice, Microsoft, Windows and Windows NT are trademarks of Microsoft Corporation in the United States, other countries or both.

Java and all Java-based trademarks and logos are trademarks of Sun Microsystems, Inc. in the United States, other countries or both.

Other company, product and service names may be trademarks or service marks of others.

