

Test Scenario 5

Accessing and using IBM eNetwork Host On-Demand

In Scenario 5, a customer has about 50 employees in its Phoenix branch office who use Netscape Navigator, a Java™-enabled Web browser, to access the Internet. These employees, who are on a TCP/IP LAN, must access VM in the company's corporate headquarters in Dallas.

The recommended solution is to provide VM access through the Internet using Host On-Demand.

By doing this, the customer does not have to install a 3270 terminal emulation program on each employee's desktop. Rather, employees with Java™-enabled Web browsers can seamlessly access 3270 SNA applications.

Scenario 5: Accessing and using Host On-Demand

You will need to perform these steps to complete Scenario 5.

1. Be sure you have installed the following required software:

Server software requirements:

- Lotus Go Server
- IBM Internet Connection Server (ICS) for Windows NT, for Windows NT, or Lotus Domino™ Server, Microsoft Internet Information Server (IIS). The Web server must be running on the same machine where Communications Server for Windows NT and Host On-Demand are running.

Client software requirements:

- Netscape Navigator 3.0, or higher, Web browser
- Microsoft Internet Explorer 3.0, or higher, Web browser
- Any other browser that is Java™-enabled

2. If you haven't already done so, perform the following:

- Configure and start Communications Server for Windows NT and IBM Internet Connection Server (or its equivalent) on a remote server
- Configure a TN3270E server
- Provide user access to a remote host

3. Open the Java™-enabled Web browser.

4. Specify the Web site (using either the IP address or hostname), the appropriate Host On-Demand subdirectory, and the file access:

http://9.39.67.233/hod/he3270en.htm

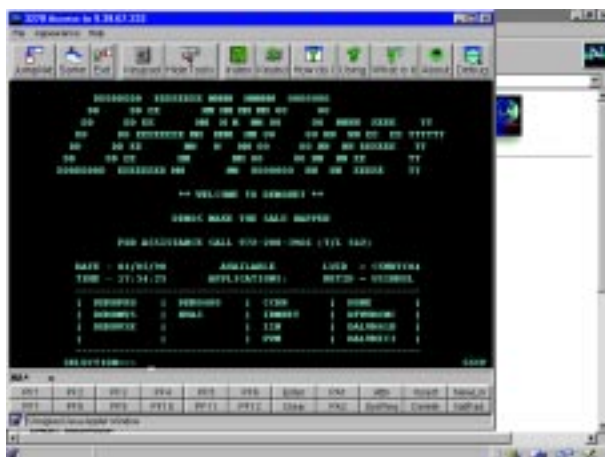
5. The following is displayed in the Netscape Navigator browser window.



Notes:

The Separate Window option enables users to either display a host session in the Web browser window or in a separate window. In this scenario, the host session will display in a separate window.

The defaults for the options that display on the Host On-Demand screen are controlled by the configuration file (**httpd.cnf**), which resides on the IBM Internet Connection Server. It can easily be modified using any text editor.



The TN3270E server port (23 in this example) is a Telnet well-known port.

6. Click **Connect to Host** to start a TN3270 session. In our scenario, the following host emulator screen is displayed.

7. Log on to VM in the usual manner.