

## Host access scenarios

### Introducing the test scenarios

These scenarios illustrate common networking problems faced by businesses today, and they show how Communications Server for Windows NT provides the solutions to those problems. Before beginning the scenarios, be sure that you have the necessary software and hardware.

Note: The network diagrams included with the scenario descriptions are generic. The actual test scenarios may only require you to configure selected portions of the illustrated networks.

### Test Scenario 1

#### Configuring a TN3270E server

In Scenario 1, a customer's computers are connected using a TCP/IP LAN, but employees need to access critical host applications.

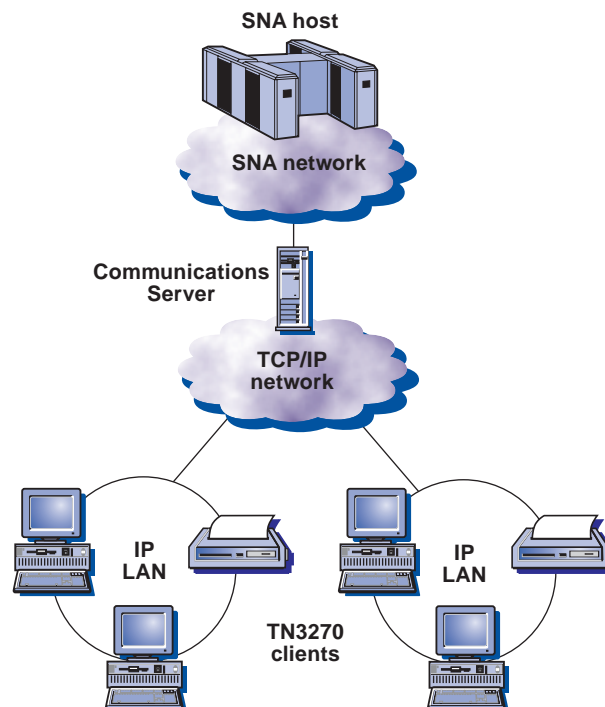
The recommended solution is to configure Communications Server for Windows NT as a TN3270E server and provide workstations with TN3270 emulation software. The TN3270E server would function as a gateway, enabling users to access the host system.

To complete this scenario, you will need to perform the following steps:

**Step 1:** Configure the node, devices, and gateway on the server machine.

**Step 2:** Configure IBM eNetwork Personal Communications for Windows NT on the client machine.

The following figure shows how the TN3270E Server host function enables you to configure your solution.



## Scenario 1: Configuring a TN3270E server

To complete this scenario, you will need to perform the following:

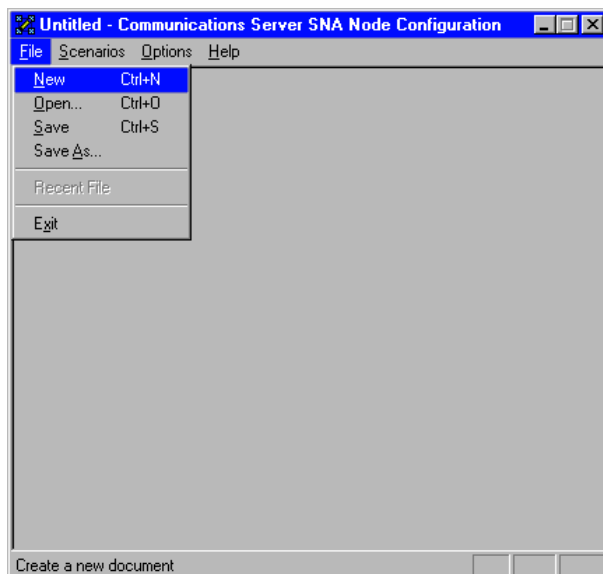
### Step 1: Configure the node, devices, and gateway on the server machine

1. Click **Start** on the task bar, then select:

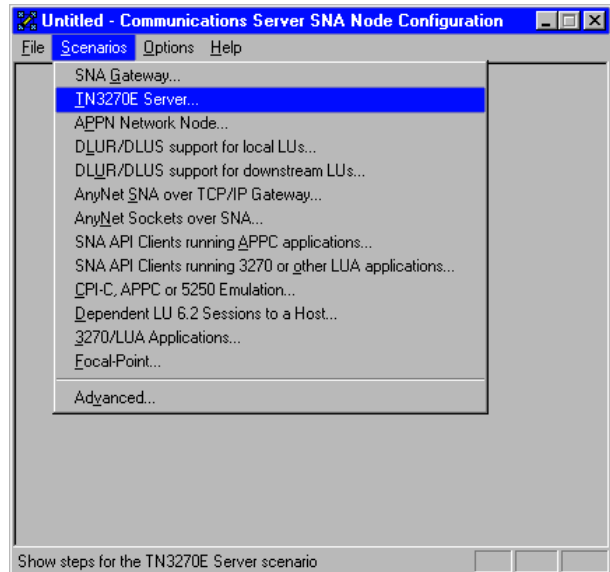
- Programs
- IBM Communications Server
- SNA Node Configuration

2. The Communications Server SNA Node Configuration window is displayed.

- Select **File**, then select **New**

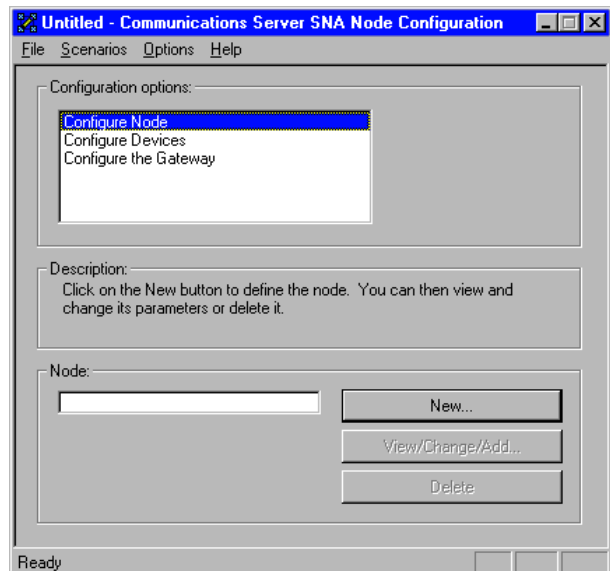


3. Select **Scenarios**, then select **TN3270E server**.



### Configure the node

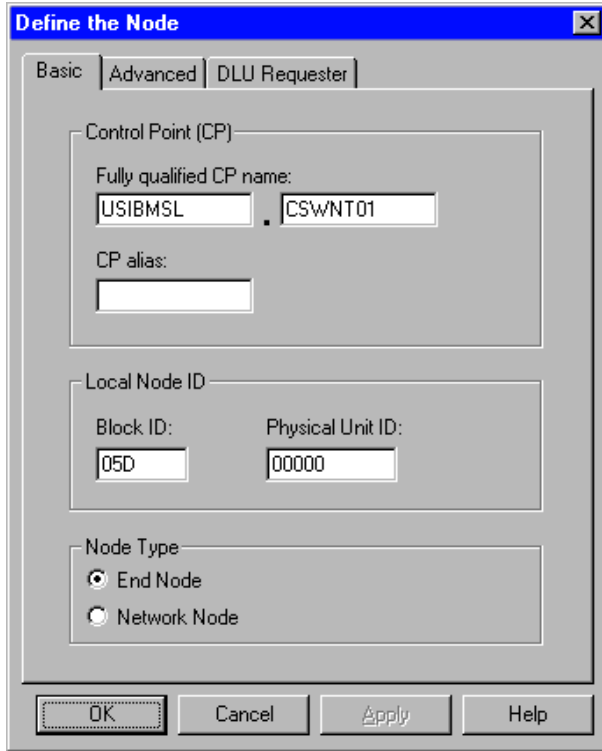
1. Highlight **Configure Node**, then select **New**.



2. The Define the Node window is displayed. Select the **Basic** tab, and provide the following information.

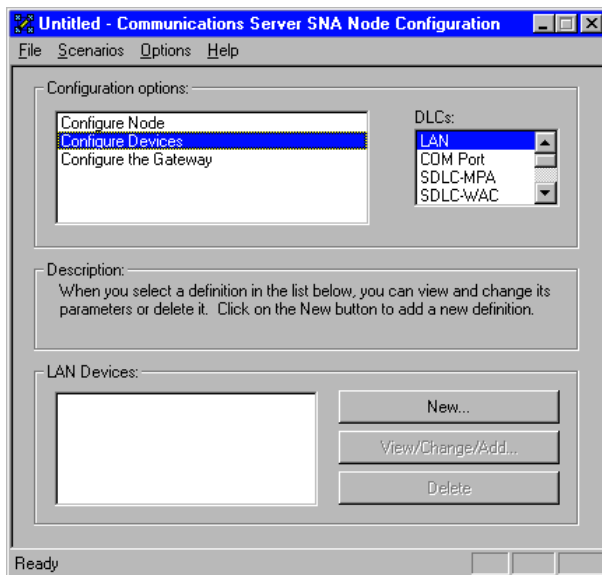
- Fully qualified CP name = **USIBMSL.CSWNT01**
- Node Type = **End Node**

3. When you are done, click **OK**.

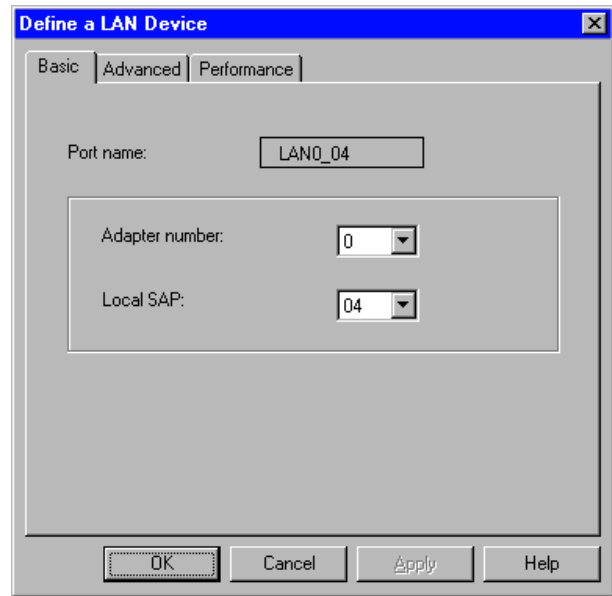


### Configure Devices

1. Highlight **Configure Devices**, then select **New**.

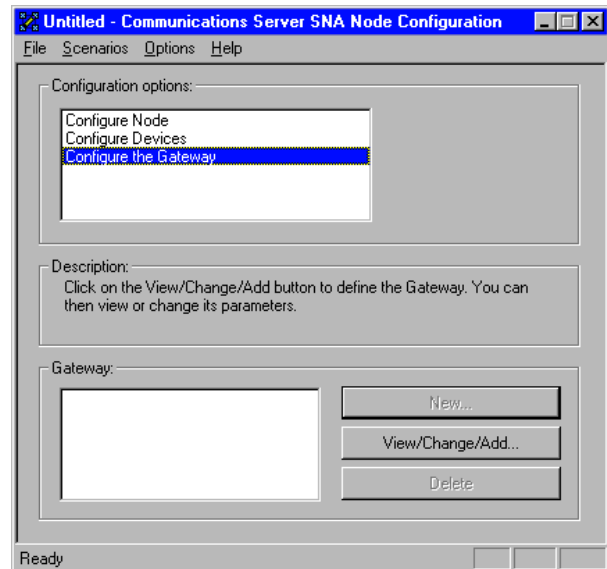


2. The Define a LAN Device window is displayed. Click **OK** to accept the default values.

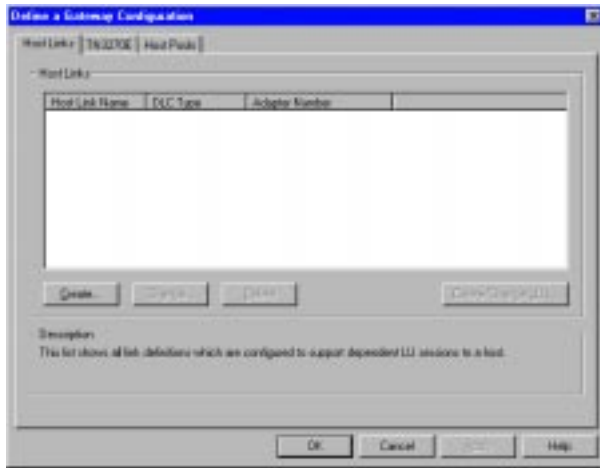


### Configure the Gateway

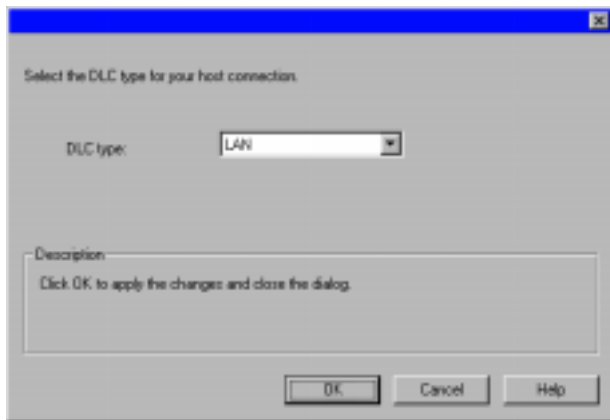
1. Highlight **Configure the Gateway**, then press **View/Change/Add....**



2. The Define a Gateway Configuration window is displayed. Select the **Host Links** tab, then press **Create** to define a new link.



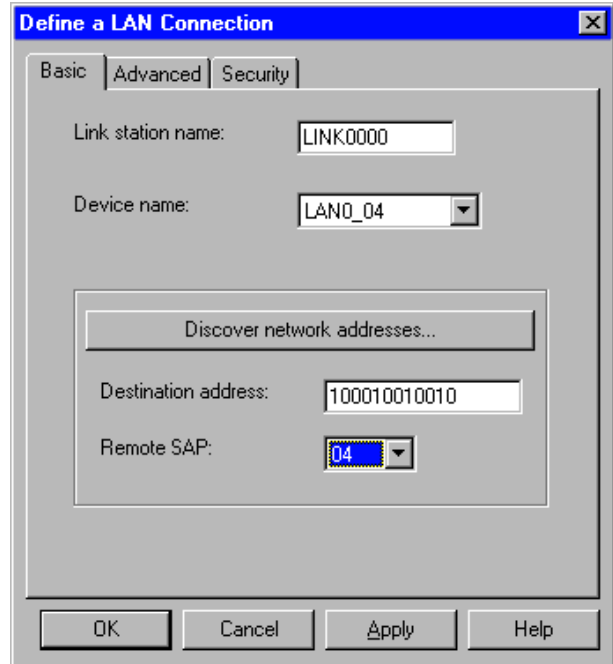
3. The Host Link Type window is displayed. Select DLC type = **LAN**, then press **OK**.



4. The Define a LAN Connection window is displayed.

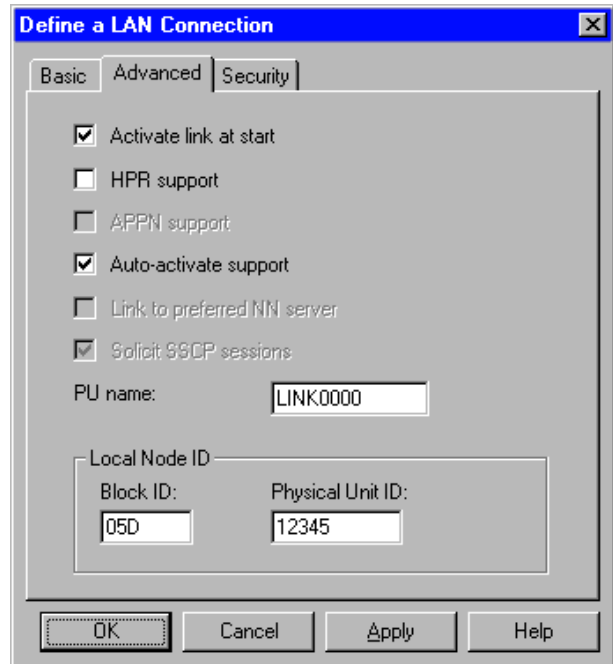
– Enter the **12 character hexadecimal address of the S/390 host**. In this example the destination address = **100010010010**.

5. When you are done, select the **Advanced** tab.

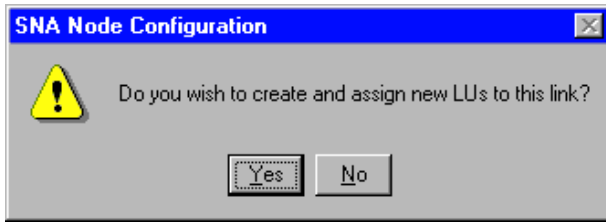


6. On the **Advanced** property page, enter the **Local Node ID**. The Local Node ID consists of two parts: the Block ID and the Physical Unit ID. In this example, the Block ID = **05D**, and the Physical Unit ID = **12345**.

– After entering the Local Node ID information, press **OK** to create the LAN connection.



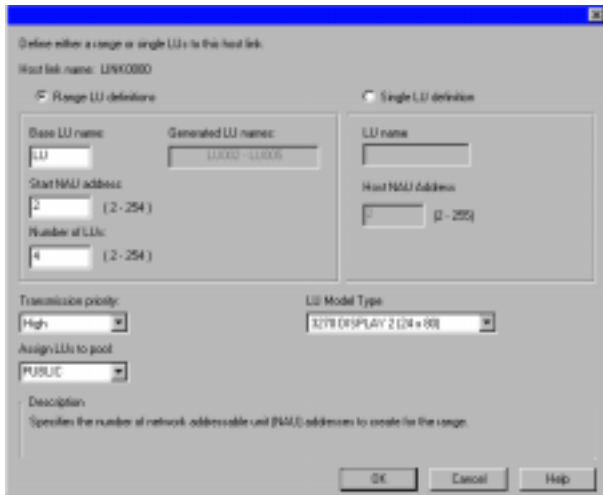
7. This SNA Node Configuration window is displayed. Press **Yes** to create a new LU for this host link.



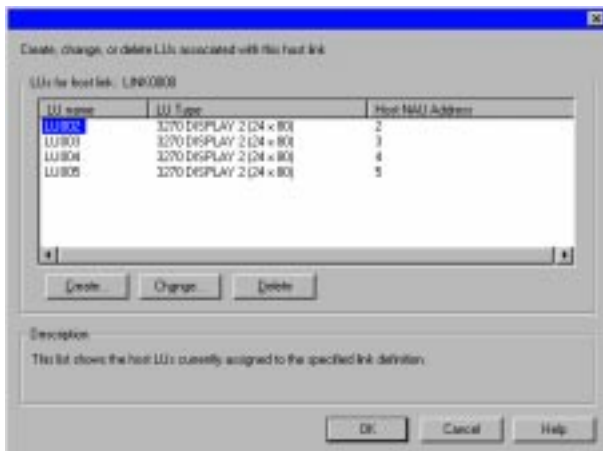
8. The Define LUs window is displayed. Enter the following information.

- Base LU name = **LU**
- Number of LUs = **4**

9. When you're done, click **OK** to define the range of LUs.



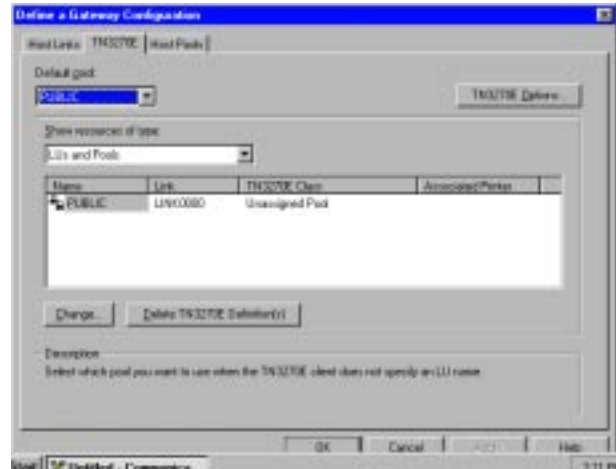
10. When the Assigned LUs window is displayed, press **OK**.



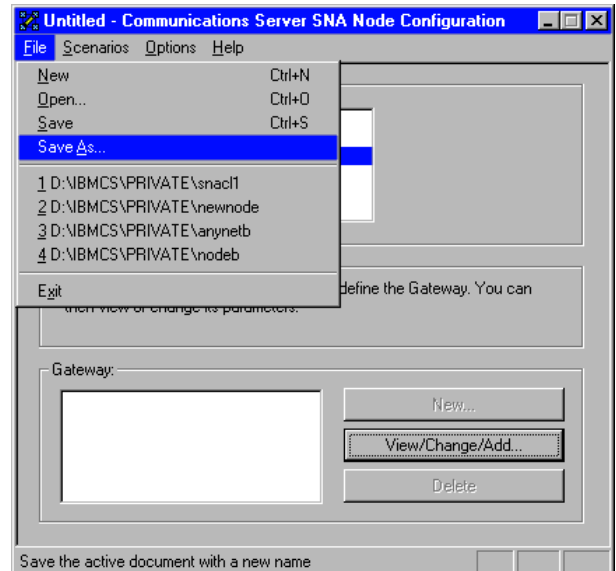
11. The Define a Gateway Configuration property sheet is displayed.

- Select the **TN3270E** tab
- Select **PUBLIC** from the Default pool dropdown list

12. Press **OK**.



13. The Communications Server SNA Node Configuration window is displayed. Select **File**, then select **Save As...**

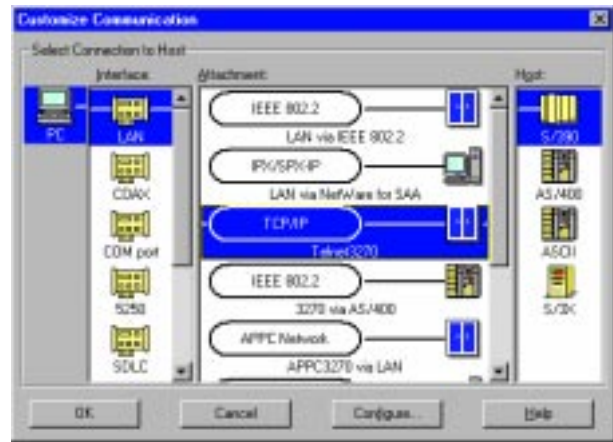


14. The Save As window is displayed.

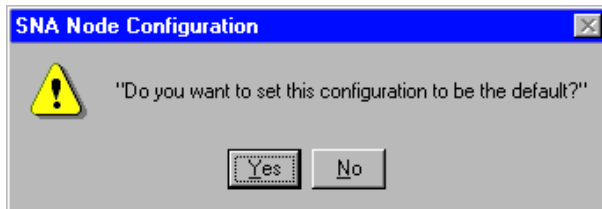
- Enter File name = **cswnt01.acg**
- Press **Save**



2. Configure as shown in the following example. When you are done, double-click **TCP/IP** in the Attachment column.



15. When this SNA Node Configuration window is displayed, select **Yes**.



You have completed the TN3270E server configuration.

Next, you will want to start the node, and then verify that the link is active.

**Step 2:  
Configure IBM eNetwork Personal Communications for Windows NT on the client machine**

If you have not already done so, install Personal Communications for Windows NT on a client workstation where TCP/IP is installed, configured, and attached to a TCP/IP LAN.

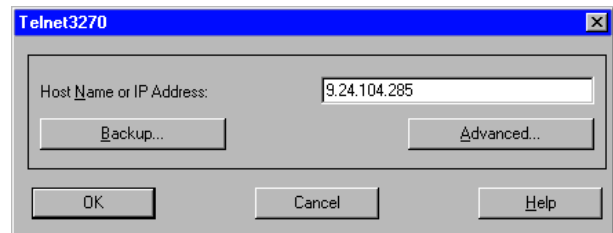
1. To configure, click **Start** on the task bar and then select:

- **Programs**
- **IBM Personal Communications**
- **Start or Configure Session**

3. The Telnet 3270 window is displayed.

- Enter the **IP address of the TN3270E server**. In this example, the IP address is **9.24.104.285**.

4. When you are done, click **OK**.



You have completed the TN3270 client configuration which will enable you to connect to the TN3270E server and access an emulation screen.