

Adds the look and feel of the Web to your host applications



IBM Screen Customizer

Highlights

Instantly transforms S/390® and AS/400 host screens into customizable GUIs

Lets you capture and customize host screens with Administrator and Customization Studio components

Supports multiple customizations of the same screen

Requires no programming or host component for Customization Studio

Combines multiple host sessions and applications into a single GUI

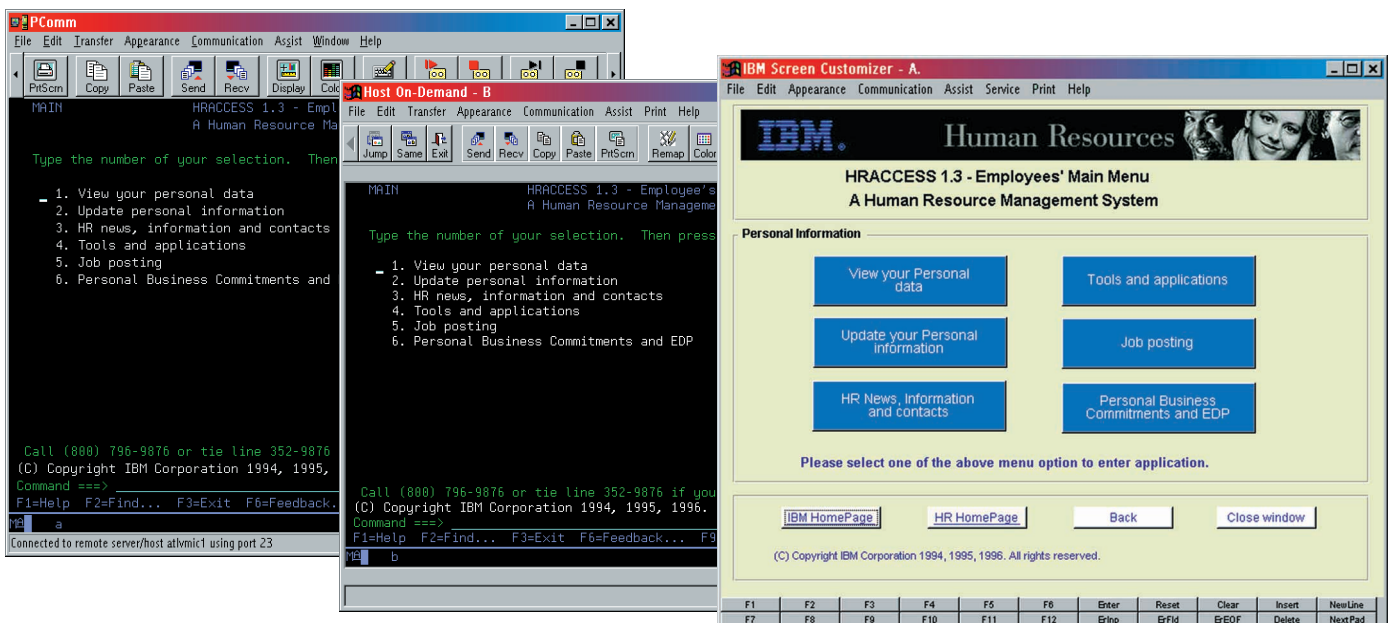
Allows drag-and-drop customization of user-selected host screens

Allows you to hide navigational screens for more targeted workflow

Works with Host On-Demand, Personal Communications and Client Access Express

IBM Screen Customizer consists of three components:

- IBM Screen Customizer for Host Integration (containing Administrator and Customization Studio)
- IBM Screen Customizer RunTime for Host On-Demand
- IBM Screen Customizer RunTime for Personal Communications



With Screen Customizer, you can easily customize 3270 and 5250 applications for a user-friendly graphical interface.

Customize your screens automatically— without programming

IBM Screen Customizer automatically converts host screens into graphical presentations, which are easy to customize—without programming. Available for both IBM Host On-Demand and IBM Personal Communications, Screen Customizer is based on innovative screen recognition technology, requiring no access to source code. Users can simultaneously access multiple hosts with multiple sessions, without causing degradation in host response time. After installing Screen Customizer, users never have to see a *green screen* again.

Easy-to-customize GUI screens without programming

The Screen Customizer default graphical user interface (GUI) is automatically presented for each host screen at the client, featuring automatic menu buttons, defined input fields and hot spots. With Screen Customizer Customization Studio, you can create customized versions of host screens captured by Administrator. You can improve screens by adding new objects, changing fonts and colors, hiding host fields, reordering workflow, combining data or automatically navigating the user through screens.

The drag-and-drop technology of Customization Studio eliminates the need for programming, making it a cost-effective, quick solution that allows you to leverage investments in legacy applications. Screen Customizer runs on a Microsoft® Windows® 95, Windows 98 or Windows NT® workstation. The Customization Studio component does not require a host connection.

Smooth integration with connectivity software

The Screen Customizer RunTime component was developed to integrate smoothly with Host On-Demand and Personal Communications (SNA and TCP/IP) connectivity software to form a complete Host Integration solution. Host On-Demand (Java™ emulator) and Personal Communications (standard terminal emulator) manage 3270 and 5250 connectivity, while Screen Customizer RunTime delivers graphical presentation of host application screens. The same customized screens can be used by both Personal Communications and Host On-Demand clients. In addition, the Screen Customizer RunTime for Personal Communications supports Client Access Express.

For more information

To learn more about IBM Screen Customizer, visit:
www.ibm.com/software/network/screencustomizer

IBM Screen Customizer at a glance

Hardware requirements

- A PC or workstation computer
 - Intel® Pentium® processor
 - 50MB of available disk space (some client configurations will require less)
 - 32MB of RAM
-

Software requirements

To install Screen Customizer for Host Integration, you must have already installed either Host On-Demand, Personal Communications or Client Access Express. The installation program detects which product you have and installs the appropriate files.

You must have installed one of the following:

- Host On-Demand, Version 4.0 CSD1
- Host On-Demand, Version 4.0 CSD1 Specially Developed for On-Demand Server
- Personal Communications, Version 4.3 CSD2
- Client Access Express, Version 4.0 with SP SF59557, or higher (requires Screen Customizer, Version 1.0 CSD2)

The RunTime Client can be installed on a Host On-Demand or Personal Communications local workstation or on a Host On-Demand server to be downloaded.

Supported operating systems to install the RunTime Client on a Host On-Demand local client include:

- Windows 95 and Windows 98
- Windows NT, Version 4.0 with SP4

Supported operating systems to install the RunTime Client on a Host On-Demand server include:

- Windows NT, Version 4.0 with SP4
- IBM AIX®, Version 4.2
- IBM OS/2 WARP®, Version 4 and Warp Server
- Novell NetWare, Version 4.x
- Sun Solaris™, Version 2.5.1
- HP/UX 10.20
- Red Hat Linux®, Version 5 Release 2
- IBM OS/390®, Version 2 Release 5
- IBM OS/400®, Version 4 Release 2

Supported operating systems to install the RunTime Client on a Host On-Demand server (Specially Developed for On-Demand Server) include:

- Windows NT, Version 4.0 with SP4
- AIX, Version 4.3.2
- Sun Solaris, Version 2.6
- OS/390, Version 2 Release 5

Supported operating systems to install the RunTime Client on a Personal Communications or Client Access Express local workstation:

- Windows 95 and Windows 98
- Windows NT, Version 4.0

Supported operating systems to install Administrator and Customization Studio:

- Windows 95 and Windows 98
 - Windows NT, Version 4.0
-

Browser requirements

- Netscape Navigator 4.08 or 4.5 (Windows 95, Windows 98, Windows NT, UNIX®)
 - Netscape Navigator 4.04 (IBM OS/2®) — remote server only
 - Microsoft Internet Explorer 4.01 with IBM SP1® or Internet Explorer 5.0 (Windows 95, Windows 98, Windows NT)
- (A browser is not required for Screen Customizer RunTime for Personal Communications.)
-

IBM Screen Customizer features at a glance

Feature	Function
Host On-Demand and Personal Communications integration	<ul style="list-style-type: none">• All host screens accessed automatically presented as default GUIs which include:<ul style="list-style-type: none">– Defined input fields– Clickable menu buttons– Clickable hot spots• Customization that provides the ability to:<ul style="list-style-type: none">– Hide unnecessary information– Move fields to reorder the host workflow– Add check and list boxes– Create radio and Web link buttons
File transfer	<ul style="list-style-type: none">• Enables 3270 and 5250 sessions for Host On-Demand and Personal Communications• Provides menu options and toolbar buttons• Offers macro buttons that can be created to start file transfer from a customized screen
Run applet	<ul style="list-style-type: none">• Launches user-defined applets at startup• Launches from button or link
Get-to-the-point	<ul style="list-style-type: none">• Allows users to easily navigate through screens by entering data into fields and pressing function keys• Hides unnecessary screens from users
Global variables	<ul style="list-style-type: none">• Allows data to be transferred between different applications and sessions• Combines screens, concatenates values or performs screen calculations
Ease of use	<ul style="list-style-type: none">• Cut, copy and paste function from the menu bar• Show and hide status bar and keypad• IBM AS/400® native installation and packaging for RunTime client



© Copyright IBM Corporation 2000

IBM Corporation
3039 Cornwallis Road
Research Triangle Park, NC 27709

Printed in the United States of America
3-00

All Rights Reserved

AIX, AS/400, the e-business logo, IBM, OS/2, OS/2 WARP, OS/390, OS/400, S/390 and SP1 are trademarks of International Business Machines Corporation in the United States, other countries or both.

Intel and Pentium are trademarks of Intel Corporation in the United States, other countries or both.

Microsoft, Windows and Windows NT are trademarks of Microsoft Corporation in the United States, other countries or both.

Java, all Java-based trademarks and logos and Solaris are trademarks of Sun Microsystems, Inc. in the United States, other countries or both.

Linux is a registered trademark of Linus Torvalds.

UNIX is a registered trademark in the United States and other countries, licensed exclusively through X/OPEN Company Limited.

Other company, product and service names may be trademarks or service marks of others.



Printed in the United States on recycled paper containing 10% recovered post-consumer fiber.



G325-3917-01