

**Reference guide**

IBM Host Access Client Package



**WebSphere** software



**One solution for all your host connection needs**



### **IBM Host Access Client Package**

In a single package, priced per user, IBM provides two functionally rich and highly secure products to meet your host-access needs. IBM Host Access Client Package is flexible enough to address the needs of the traditional “power user” and to provide Web access to mobile employees or trading partners.

With tools that are available today, you can start building business applications for the future. You can rapidly create Web-based host-access applications based on your host systems. And you can use these tools to help you achieve a competitive advantage in your marketplace, reduce expenses and use your existing investments.

Host Access Client Package can help you reach your business goals by:

- *Providing market-leading host connectivity and emulation*
- *Capitalizing on existing investments and extending enterprise applications to Web-based technologies*
- *Extending the reach of your enterprise’s host applications with Java™ technology-based host access*
- *Providing multiple security options for access across the Internet*

### **Customizable solutions to meet your host access needs**

Host Access Client Package provides access to applications and data residing on IBM System i™ (5250), IBM System z™ (3270) and DEC UNIX® (VT) hosts to support traditional and Web users in Systems Network Architecture (SNA) and intranet environments. If you require only IBM eServer™ iSeries™ access, IBM Host Access Client Package for iSeries systems is a more appropriate solution.

Both packages provide solutions for your host-connection needs and include IBM Personal Communications for traditional emulation and IBM WebSphere® Host On-Demand software for browser-based emulation. You can also create custom Web-based applications with the comprehensive set of application programming interfaces (APIs) included in each package.

- ***IBM Personal Communications***

Get access to applications and data residing on midrange and host systems. IBM Personal Communications is an industry-leading emulator and contains comprehensive tools that help simplify connectivity and access to host data. It offers features such as multiprotocol environments, including High-Performance Routing (HPR) over IP; Internet Protocol, Version 6 (IPv6) support (and secure Telnet session support) using Microsoft® Crypto API (MSCAPI); or IBM Global Security Kit

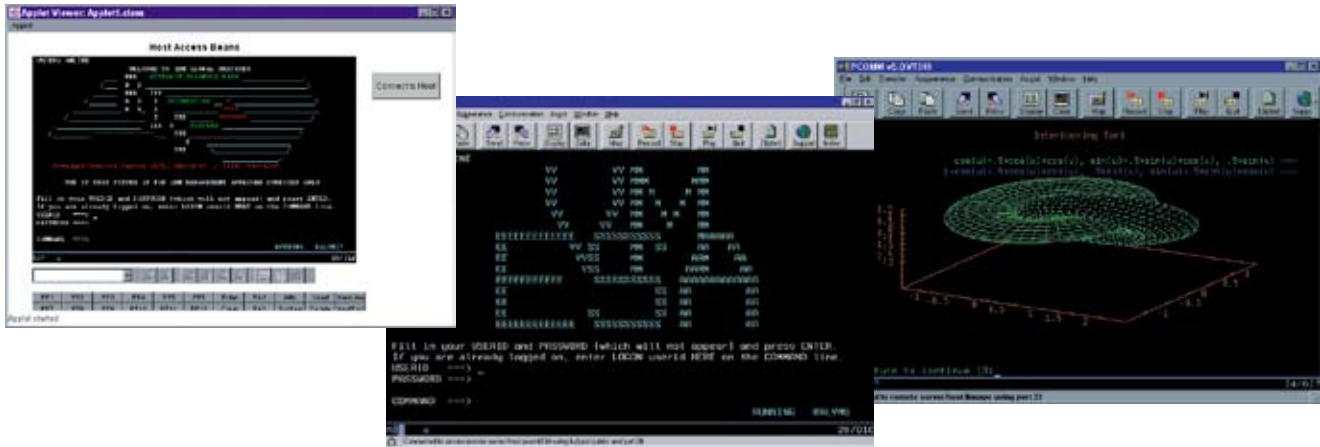
(GSKit). Personal Communications software also includes Host Access Beans for Java software and a Java interface for Host Access Class Library (HACL)—technologies that help reduce rework. These technologies also help enable your applications to remain fully functional as your business evolves.

- ***IBM WebSphere Host On-Demand***

Gain highly secure Web-to-host access and Web-based application programming support with one interface to your TN3270E, TN5250, VT52, VT100, VT220 and VT420 systems, IBM CICS® applications, and FTP servers consistently across platforms.

Maximize your productivity with standard desktop utilities, file transfer and host print. Using the deployment wizard, administrators have the option to create custom HTML files containing different configuration information for host sessions. Create custom Web-based applications using Host Access Beans for Java software and HACL. Also, Web-server installation means users almost always access the latest version. WebSphere Host On-Demand supports your choice of client and server platforms and does not require middle-tier servers.

## Helping enable more secure access to your critical business systems



Multiple Personal Communications sessions illustrate SSL support, VT340 graphics and a custom application using Host Access Beans for Java.

### Personal Communications

Personal Communications is a host-communication and terminal-emulation package that features 3270, 5250 and VT emulation; SNA application support; and SNA and TCP/IP connectivity. It is a key component of Host Access Client Package and IBM WebSphere Host Integration Solution—and it helps enable security-rich access to critical business systems for virtually every user.

Personal Communications can bring robust personal networking functions to the workstation and can use your existing networking capabilities, including SNA applications and technologies, such as Advanced Program-to-Program Communication (APPC) and HPR. It also offers TCP/IP support capabilities and an extensive API set, including HACL and Emulator High-Level Language Applications Programming Interface (EHLAPI), through programming languages such as C++, VBScript and Java.

Personal Communications can assist you in reaching your emulation goals by:

- *Providing market-leading host connectivity and emulation*
- *Including tools to easily combine host and desktop applications*
- *Helping to capitalize on existing investments and extend applications to IP network technologies*
- *Enabling users to have access to critical business systems*

Enhancements to IBM Personal Communications, Version 5.9 include:

- *Support for the Microsoft Windows® x64 platform (non-SNA)*
- *Support for 5250 Kerberos auto sign-on*
- *Print support for graphics display interface (GDI) for VT printer controller mode*
- *Negotiated Telnet security*
- *IBM Support Assistant*
- *Windows Policy additions*

### *Industry-leading emulation*

Personal Communications continues to set the standard for terminal access to critical applications and data on different host systems, taking advantage of 3270, 5250, TN3270E, TN5250, VT52, VT100, VT220 and VT340 emulation. The Personal Communications industry-standard APIs include 32-bit EHLLAPI APIs, as well as Windows HLLAPIs (WinHLLAPIs).

### *Improved development capabilities*

Personal Communications supports Host Access Beans for Java (based on the JavaBeans specification), Microsoft Visual Basic automation objects and VBScript. Building on the Personal Communications leadership in object-oriented programming, the HACL API provides a Java programming interface that enables you to create applications for both Personal Communications and WebSphere Host On-Demand. This capability enables flexibility while preserving your future investments.

### *Security when you need it the most*

With Personal Communications, you can be confident that you have access to a security-rich environment when you need it the most. Personal Communications supports Secure Sockets Layer (SSL), Version 3.0 and Transport Layer Security (TLS), Version 1.0. When combined with support for load-balancing Service Location Protocol (SLP)—found in products such as IBM Communications Server—you can configure Personal Communications to connect to only SSL-enabled servers, helping to provide more network security.

### *Accelerate the transition to On Demand Business*

Personal Communications helps ensure that you are ready to make the transition to On Demand Business with tools that you can use today:

- *Network integration*

Personal Communications is designed to handle a wide variety of protocols—including Integrated Services Digital Network (ISDN), HPR, SNA and IP—to help you connect users to what they need to access mainframe applications and data.

- *Connectivity*

Personal Communications offers a fast, network-efficient connection to employees, customers, suppliers and trading partners. Replace outdated, disparate communication tools with one solution for access to critical business systems.

- *On Demand Business tools*

Personal Communications Java Interface for HACL helps you make the change to a Web-to-host environment more easily and efficiently. Using this tool can help you preserve your application-development investment, as you make the move to other IBM WebSphere Host Integration Solution products.

- *Industry-standard solutions*

From EHLLAPI to TCP/IP to SNA, Personal Communications provides industry-standard solutions to help extend your investments into the future.

- *Extensive language support*

Personal Communications is multilingual. Available in 22 languages, it includes double-byte character set (DBCS) languages, supports the euro sign, and includes extensive keyboard and code-page support.

- *Microsoft certification*

The Designed for Microsoft Windows XP certification helps ensure that Personal Communications can take advantage of the new features in Windows XP, and that Personal Communications has been extensively tested to meet Microsoft XP quality standards.

- *SNA-over-IP backbone*

Through the use of enterprise extender in Personal Communications, you can maintain the integrity of SNA LU6.2, Common Programming Interface for Communications (CPI-C), APPC and LU0 applications over an IP network, enabling these applications to run unchanged even as the network changes. Everything is handled at the end points, and the routers forward the IP packets as if they were native IP applications.

## IBM Personal Communications for Windows, Version 5.9 features and functions

	3270	5250	VT
<b>Installation and customization</b>			
IEEE 802.2	X	X	
3174 peer communication (local area network [LAN] over coaxial); not supported on Windows 2000 or later	X	X	X
Internet Package Exchange (IPX) and Sequenced Package Exchange (SPX)		X	
Communications Server API client			
• APPC	X	X	
• LUA	X		
TCP/IP	X	X	X
SNA Distributed Platform Terminal (DFT)	X		
Non-SNA DFT	X		
Twinaxial		X	
iSeries and S/3 x console (asynchronous and twinaxial)		X	
Synchronous Data Link Control (SDLC) (including auto-dial capability)	X	X	
Wide area connector (WAC)	X	X	X
SNA over synchronous data transmission	X		
Asynchronous data transmission	X		
Asynchronous data transmission for IBM Global Network®	X		
Home3270	X		
Hayes Autosync	X	X	
Hayes Autosync II (Windows 95 and Windows 98 only)	X	X	
Microsoft Host Integration Server			
• FMI	X	X	
• Windows APPC	X		
• Windows LUA			
APPC3270	X		
IBM AnyNet® (SNA over TCP/IP)	X	X	
ISDN, X.25	X	X	
PCI MPA	X	X	
Enterprise Extender	X	X	
3270 pass-through over twinaxial	X		
Original equipment manufacturer (OEM) adapter support	X	X	X
Application-initiated detect and repair	X	X	X
Silent installation	X	X	X

**IBM Personal Communications for Windows, Version 5.9 features and functions (continued)**

	3270	5250	VT
<b>Installation and customization (continued)</b>			
Microsoft Systems Management Server (SMS) support	X	X	X
Installation and configuration from LAN server	X	X	X
Simultaneous sessions with different code pages and keyboard languages	X	X	X
Windows 2000 or Windows XP certified	X	X	X
Automatic logon	X	X	
Twenty-six display and printer emulation session	X	X	X
Selectable display sizes	X	X	X
VT52, VT100, VT220 and VT340 emulation			X
Toolbar customization	X	X	X
Text configuration files	X	X	X
Configuration update files	X	X	
Initial configuration definitions	X	X	
System policy	X	X	X
Microsoft Windows Installer	X	X	X
<b>Secure session support</b>			
GSKit	X	X	X
MSCAPI	X	X	X
FIPS Mode	X	X	X
TLS, Version 1.0	X	X	X
SSL, Version 3	X	X	X
Smart card support	X	X	X
Client certificate authentication	X	X	X
<b>Print support</b>			
Host print		X	
• 3812 printer emulation	X	X	
• Host print transform	X	X	
• ASCII transparent	X	X	X
• Printer definition table (PDT)	X	X	X
• 3270 and 5250 printer association		X	
Screen print	X	X	X
Associated printer support	X	X	
ZipPrint	X		



**IBM Personal Communications for Windows, Version 5.9 features and functions (continued)**

	3270	5250	VT
<b>Networking function</b>			
SNA data compression (emulation sessions)	X	X	
SNA data compression (LU6.2 sessions)	X	X	
Vital product data (VPD)/Enable vital product data (EVPD) Alert	X		
Response time monitor (RTM)	X		
Command line support to start, stop and query the SNA node	X	X	
Service Location Protocol (SLP)	X	X	
SSL, Version 3.0	X	X	X
TLS, Version 1.0	X	X	X
Client authentication for SSL	X	X	X
HPR over IP for nondisruptive backup	X	X	
IPv6 support	X	X	X
<b>Utilities</b>			
Administration tools	X	X	X
Information bundler for problem determination	X	X	X
Internet service	X	X	X
Enhanced log or trace viewer	X	X	X
Macro conversion tool for WebSphere Host On-Demand	X	X	X
Product update tool	X	X	X
Certificate manager	X	X	X
Certification migration	X	X	X
<b>User interface</b>			
Graphical, customizable toolbar feature	X	X	X
Rule line	X	X	X
Menu-bar customization	X	X	X
Pop-up keypad and hot keys	X	X	X
3-D hot spots	X	X	X
Macro record and play	X	X	X
Graphical keyboard mapping	X	X	
• National language support (NLS) key-caps support	X	X	X
• DBCS unique keyboard supports	X	X	X
Customizable mouse	X	X	X
Drag-and-drop color remapping	X	X	X

**IBM Personal Communications for Windows, Version 5.9 features and functions (continued)**

	3270	5250	VT
<b>User interface (continued)</b>			
Crisp fonts, automatic sizing, fixed font size	X	X	X
Display setup, view setup, window setup	X	X	X
Internet hot spots	X	X	X
OLE and Active X objects	X	X	X
APL support	X		
Automation and scripting utility (CMMOUSE)	X	X	X
Accessibility for handicapped users	X	X	X
Status bar	X	X	X
Euro design	X	X	X
Intelligent spreadsheet support	X	X	X
Blink attribute support	X	X	X
VT history			X
Multilanguage support	X	X	X
<b>System i application support</b>			
PC organizer and text assist		X	
Enhanced nonprogrammable terminal user interface (ENTUI)		X	
<b>Programming interfaces</b>			
HACL C++	X	X	X
HACL Automation Objects	X	X	X
HACL for Java	X	X	X
Primary Interop Assemblies for Microsoft .NET	X	X	X
DOS EHLLAPI	X	X	X
EHLLAPI, DDE, PCSAPI	X	X	X
WinHLLAPI support	X	X	X
32-bit HLLAPI	X	X	X
REXX EHLLAPI support	X	X	X
Visual Basic scripting	X	X	X
Server requester programming interface (SRPI)	X		
REXX PSCAPI	X	X	X
Request unit interface (RUI)	X		
Session level interface (SLI)	X		
CPIG and APPC APIs supporting both dependent and independent LU6.2	X	X	

**IBM Personal Communications for Windows, Version 5.9 features and functions (continued)**

	3270	5250	VT
<b>Programming interfaces (continued)</b>			
Node Operator Facility (NOF)	X	X	
Microsoft Open Database Connectivity (ODBC), Version 3.0 for SNA, using IBM DB2 Connect™			X
Convert macro to VBScript or XML	X	X	X
Host Access Beans for Java	X	X	X
<b>File transfer</b>			
File transfer through emulator session	X	X	X
Command line invocation	X	X	X
Lists	X	X	X
Templates	X	X	X
Import and export	X		
Data transfer (IP and SNA)		X	
ASCII—host file transfer			
• Xmodem			X
• XModem 1k			X
• Ymodem			X
• YModemG			X
<b>Host graphics</b>			
Graphics Data Display Manager (GDDM) and Graphic Objects Content Architecture (GOCA)	X		
Programmed symbol set	X		
Vector	X		
Copy graphics images	X		
VT340 ReGIS and Sixel support			X

---

## **IBM Personal Communications for Windows, Version 5.9 features and functions at a glance**

---

### **Hardware requirements**

---

#### *Memory and fixed storage capacity*

- 64MB RAM minimum, 128MB RAM recommended for Windows XP and Microsoft Windows 2000 Professional
- 128MB RAM minimum, 256MB RAM recommended for Microsoft Windows Server 2000 and 2003
- 125MB of fixed disk space minimum; more space might be required depending on the installation options selected
- IBM and IBM-compatible workstations with at least an Intel® Pentium® microprocessor (or equivalent) strongly recommended
- CD-ROM drive if Personal Communications is to be locally installed.

### **Software requirements**

---

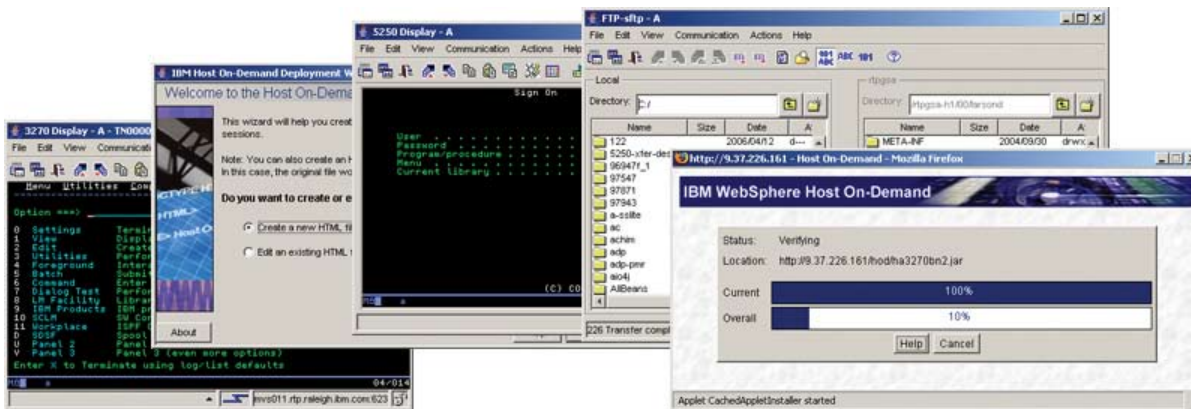
#### *Supported by the following desktop platforms*

- Windows 2000 Professional, Server and Advanced Server
- Windows XP Professional and Home Edition (32 bit)
- Windows XP Professional x64 Edition (non-SNA compatibility mode)
- Windows XP Tablet PC Edition
- Windows Server 2003 Standard and Enterprise Edition
- Windows Server 2003 Standard x64 Edition (non-SNA compatibility mode)
- Windows Server 2003 Enterprise x64 Edition (non-SNA compatibility mode)
- Windows Small Business Server 2003
- Windows Terminal Services for Windows 2000 Server and Server 2003
- Citrix Metaframe XP Presentation Server
- Citrix Metaframe Presentation Server 3.0 and 4.0
- Virtual PC 2004
- Virtual Server 2005 Standard Edition
- Virtual Server 2005 Enterprise Edition
- VMWare Workstation, Version 5.5
- VMWare Server

#### *IBM Personal Communications for Windows, Version 5.9 communicates with the following types of servers or gateways*

- IBM Communications Server for Windows, Version 6.1.2 API Client (optional)
  - IBM Communications Server for Linux, Version 6.2 Client on Windows (optional)
  - IBM Communications Server for Linux on zSeries®, Version 6.2 Client on Windows (optional)
  - Microsoft Host Integration Server 2000 Standard Edition
  - Microsoft Host Integration Server 2004 Standard Edition
  - Microsoft Host Integration Server 2004 Enterprise Edition
-

## A simple start to grow your On Demand Business fast



With IBM WebSphere Host On-Demand, you can easily access and manage your 3270, 5250 or VT host applications.

### WebSphere Host On-Demand

IBM WebSphere Host On-Demand provides cost-effective and security-rich, browser-based and nonbrowser-based host access to users in intranet and Internet environments, without any programming required. You install WebSphere Host On-Demand on a Web server, which helps simplify and centralize administrative management and deployment.

WebSphere Host On-Demand uses Java technology to help open the doors to your host data directly from your browser. Just click a hyperlink to launch the WebSphere Host On-Demand Java applet to provide user connectivity to critical host applications and data.

With support for File Transfer Protocol (FTP), TN3270E, TN5250, VT100, VT220, VT420, Secure Shell (SSH) and IBM CICS Transaction Gateway access, users have a single interface to their key host data. And because WebSphere Host On-Demand is Java technology-based, its interface has the same design across various types of operating environments.

WebSphere Host On-Demand also helps you reach your business goals by:

- Enabling you to quickly create new On Demand Business applications using Host Access Beans for Java, Host On-Demand Connector, JavaScript API and reusable components
- Providing multiple security options for access across the Internet
- Supporting host access to System z and System i models
- Providing FTP and VT access to all FTP- and VT-supported server types

### A cost-effective approach

Using WebSphere Host On-Demand can help you save money in product deployment and maintenance by helping eliminate the need to deploy software to individual user desktops. Users can connect directly to a host system, such as System z and System i, without the need for extra hardware and software between the client and the Telnet server. You can install WebSphere Host On-Demand on nearly any server platform, accommodating various-size organizations and branch offices.

As software updates occur, the latest version of WebSphere Host On-Demand is downloaded each time a user accesses the software, helping eliminate the need to install an entire product on client workstations. With the cached-client feature, users download the product (or software) only once. Subsequent sessions then originate from user hard drives, while code updates are handled in the background, through the cached client. As a result, users can be more productive and access the newest version of the code, with reduced business distribution costs.

#### *Connect directly to any Telnet server*

With WebSphere Host On-Demand, the client applet contains emulation functionality, helping eliminate the need for a middle-tier server, which in turn helps enhance your performance. After the applet has been served to the client, it's easy to connect directly to any standard Telnet server that provides the most efficient access to the required data. You can change the Telnet connection as needed, to accommodate user requirements for new data. You can also access many host sessions concurrently.

#### *Create new On Demand Business applications*

A rich Java tool set—including Host Access Beans for Java, HACL API, WebSphere Host On-Demand Connector, Programmable Host On-Demand and JavaScript API—enables you to rapidly create custom On Demand Business applications. Because WebSphere Host On-Demand is part of the WebSphere product family, you can incorporate applications developed using the tool set as part of other WebSphere software projects. This capability helps you preserve your WebSphere Host On-Demand investment, while providing a jump start to moving to the Web and On Demand Business.

The HACL API specifically provides access to 3270, 5250 and VT data streams. This class library enables you to use critical information in new ways, including integrating data from one application with another.

Host Access Beans for Java provides host connectivity and emulator functions through simple, component-based development tools, such as IBM Rational® Application Developer. Use Host Access Beans for Java or Host On-Demand Connector to rapidly create custom applications and deliver the specific functions that you want to include in your On Demand Business applications. For example, using the JavaScript API, you can integrate a WebSphere Host On-Demand session within your company's Web page.

With Programmable Host On-Demand, you can create custom applets or applications to suit your needs, without starting with the basic building blocks found in Host Access Beans. Your custom solution can take advantage of having Host On-Demand wire the beans together, save user preferences and provide other components such as the toolbar, menus and a status bar.

#### *Security-enhanced access across the Internet*

Using the TLS or SSL, Version 3.0 protocols, WebSphere Host On-Demand software extends host data access across intranets, extranets and the Internet, with added security. Mobile workers can establish security-enhanced communication with an enterprise host. With client and server certificate support, WebSphere Host On-Demand can present a digital certificate (X.509, Version 3) to the Telnet server—such as IBM Communications Server for z/OS—to facilitate authentication. Certificates can be kept in the client's browser, on a dedicated security device—such as a smart card—or in a local or network-accessed file in PKCS12, which is protected by a password.

### Deployment options

WebSphere Host On-Demand provides access to host applications from a Web browser. The browser downloads the WebSphere Host On-Demand Java applet from the Web server and then connects to most standard Telnet servers to access host applications. The WebSphere Host On-Demand applet needs configuration information to determine which host to connect to and to identify other host session properties. This configuration information can be provided to the WebSphere Host On-Demand applet from an HTML file or by using the WebSphere Host On-Demand configuration server.

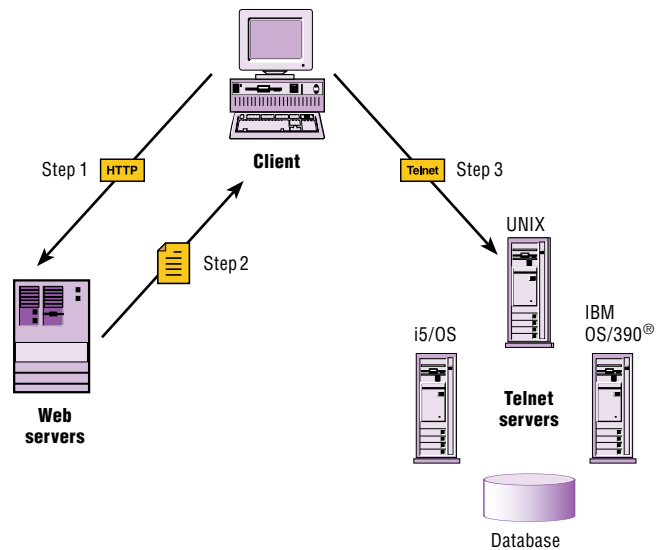
### Flexible configuration models support your unique needs

If you don't want to manage WebSphere Host On-Demand user IDs and passwords, you can use the deployment wizard to create HTML files that contain configuration information for host sessions. Having this capability means that you are not required to use the WebSphere Host On-Demand configuration server to specify sessions. If you allow users to save changes to host-session configuration information, the changes are stored on the local file system where the browser is running.

If you need to manage WebSphere Host On-Demand users, host-session information is maintained on the configuration server, using the administration utility. You can define preferences using a user and group structure. The configuration server normally stores its data locally on the WebSphere Host On-Demand server, though it can be configured to use Lightweight Directory Access Protocol (LDAP) instead. Users access their configurations using either custom HTML files created in the deployment wizard or by using one of several HTML files provided as part of WebSphere Host On-Demand. If you allow users to save changes, WebSphere Host On-Demand stores user preferences based on user IDs in the configuration server.

### Simple host access from IBM

Users can access 3270, 5250, VT applications, or FTP servers from IBM WebSphere Portal software without any programming. By combining WebSphere Host On-Demand and WebSphere Portal software, you can create custom Host On-Demand portlets for simple host application access.



IBM WebSphere Host On-Demand is a two-tier solution that eliminates the need for a middle-tier server.

---

## IBM WebSphere Host On-Demand, Version 10.0 new features at a glance

---

### Productivity

---

- *Customizable pop-up keypad*

WebSphere Host On-Demand, Version 10 introduces a new pop-up keypad that users can customize by assigning macros and keystroke functions to the pop-up keypad buttons. Users can specify the size of the pop-up keypad, the number of pop-up keypads associated with a session and the number of rows and columns in each pop-up keypad. Users can store the keypad configurations as part of the session configuration or as separate files that can be shared by multiple users, sessions or both.

---

- *Reuse active credentials*

This new feature enables users to bypass the host sign-on screen after they have been authenticated one time to that same host. For example, if a user is prompted for a user ID and password to log in to a display session and then needs to create an FTP connection or run a Structured Query Language (SQL) query to the same host or log on again to the display session at a later time, these subsequent connections can bypass the normal sign-on process.

---

- *Remap VT character attributes*

WebSphere Host On-Demand, Version 10 enables you to remap the bold, underline, blink and reverse-video character attributes, as well as any combination of those attributes to different colors.

---

- *User locations for macros and file-transfer lists*

Users can now create and use macros and file-transfer lists through any accessible network or file-system location. The macro and file-transfer list panels that enable users to select a location now allow users to define up to three other user locations.

---

### Security

---

- *SSH enhancements*

For users running Sun Java Runtime Environment (JRE), Version 1.5 (or later) or IBM JRE, Version 1.4.2 (or later), WebSphere Host On-Demand, Version 10 improves its SSH support by including SSH, Version 1 for VT display sessions. No configuration options are available for these additions because they are negotiated between the client and the server.

---

- *Password vault portlet*

WebSphere Host On-Demand provides a separate portlet for manipulating user IDs and passwords stored in administrative slots. The Web archive (WAR) file PasswordEditor.war is stored in the portal subdirectory of the WebSphere Host On-Demand publish directory.

---

### Technology

---

- *VT UTF8 (Unicode) character-set support*

WebSphere Host On-Demand, Version 10 provides VT-UTF8 (Unicode) support for VT100-like terminals. This support enables VT sessions to transmit and receive Unicode characters encoded in UTF8 format. This capability is important because many newer versions of Linux<sup>®</sup> use UTF8 as the default. Using UTF8, WebSphere Host On-Demand can now support VT connections to systems configured for DBCS languages.

---

- *Support for IBM<sup>®</sup> Workplace<sup>™</sup> Client Technology<sup>™</sup>*

WebSphere Host On-Demand, Version 10 has added support for the IBM Workplace Client Technology for Windows platforms. With this support, you can now generate WebSphere Host On-Demand plug-ins that run in products based on IBM Workplace Client Technology.

---

- *Portal JSR 168 support*

To function in other portal servers, WebSphere Host On-Demand, Version 10 provides an option in the deployment wizard to generate a portlet that can be used with any Java Specification Request (JSR) 168 technology-compliant portal server.

---



---

## IBM WebSphere Host On-Demand, Version 10.0 new features at a glance (continued)

---

### Usability

---

- *Print screen in color*

When using the Print Screen function within an emulation session, WebSphere Host On-Demand, Version 10 now supports printing in color.

---

- *Highlight field with cursor*

WebSphere Host On-Demand, Version 10 users can select the foreground and background color of the field containing the cursor within the host screen. This feature is available for 3270 and 5250 sessions.

---

- *FTP copy append*

With WebSphere Host On-Demand, Version 10, another option is presented that enables users to append a file to an existing file for either a send or receive operation. This option is available for both the FTP and SFTP.

---

- *Undo cut, copy and paste*

Several Undo functions are now available for cut, copy and paste operations.

---

- *Macro library variable*

Continuing to expand the macro programming language, WebSphere Host On-Demand now offers a new Macro Library variable, called `$HMLSystemUtil$`, that enables you to make macros even more dynamic by obtaining an applet HTML parameter, an operating-system property (environment variables) and Java system properties.

---

### Serviceability

---

- *IBM Support Assistant*

IBM Support Assistant provides an easy, consistent user interface that enables users to resolve software questions themselves. WebSphere Host On-Demand, as well as many other IBM software products, provides a plug-in that makes its product information available to the user through IBM Support Assistant. IBM Support Assistant provides three components: a search component, a service component and a support links component. The service component assists users who choose to submit a problem management record (PMR) by providing access to the IBM Electronic Service Request Web site. The support links component offers a consolidated list of IBM Web links organized by brand and product.

Help-desk professionals and WebSphere Host On-Demand administrators might want to install IBM Support Assistant to better support end users. IBM Support Assistant can be downloaded at [ibm.com/software/support/isa/index.html](http://ibm.com/software/support/isa/index.html).

---

### Hardware requirements

---

#### *Server space per additional user*

Disk space must be available on the server to support applet files and the WebSphere Host On-Demand service manager.

These requirements are based on a typical installation and are only estimates. Sizes can vary by operating system and the languages installed.

- For Windows 2000 and Windows 2003: 350MB of disk space for one user interface language, and another 8MB of disk space for each additional user interface language
  - For the IBM AIX® operating system: 350MB of disk space (includes English as a user interface language and additional security files), and another 8MB of disk space for each additional user interface language
  - For Sun Solaris Operating Environment, Linux and HP-UX: 330MB of disk space (includes English as a user interface language), and another 8MB of disk space for each additional user interface language
  - All other operating systems: 480MB (all languages installed)
-

---

## IBM WebSphere Host On-Demand, Version 10.0 new features at a glance (continued)

---

### Software requirements

---

*Can be installed on the following servers*

- Windows 2000 (Professional, Server and Advanced Server)
- Windows XP Professional (32 bit) (Note: This should not be used for a large-scale production server.)
- Windows 2003 Server and Enterprise (32 bit)
- IBM AIX 5L™, Version 5.2 and Version 5.3
- IBM OS/2 Warp® Server, Version 4 and OS/2 Warp Server for e-business, Version 4.5
- Sun Solaris Operating Environment, Version 8 and Version 9
- IBM OS/400®, Version 5.1, Version 5.2 and Version 5.3; IBM i5/OS®, Version 5.3 and Version 5.4
- IBM z/OS®, Version 1.4, Version 1.5, Version 1.6 and Version 1.7
- HP-UX, Version 11.0 and Version 11i
- Red Hat Enterprise Linux, Version 2.1, Version 3.0 and Version 4.0
- Red Hat Linux, Version 9.0 Personal and Version 9.0 Professional
- SUSE Linux, Version 8.2 and Version 9.0
- TurboLinux, Version 8.0 Workstation and Server

**Note:** The version for support for Linux on System z is the same as listed for Red Hat, SUSE and TurboLinux.

---

*Supported on the following desktop operating environments when downloaded from a server*

- Windows 2000 (Professional)
- Windows XP Professional and Home Edition (32 bit)
- Windows Server 2003 Enterprise, Standard and Web (32 bit)
- AIX 5L, Version 5.2 and Version 5.3
- Sun Solaris Operating Environment, Versions 8 and Version 9
- HP-UX, Version 11.0 and Version 11i
- Red Hat Enterprise Linux AS, Version 2.1, Version 3.0 (WS, ES, AS) and Version 4.0
- Red Hat Linux, Version 9.0 Personal and Version 9.0 Professional
- SUSE Linux, Version 8.2 and Version 9.0
- TurboLinux, Version 8.0 Workstation and Version 8.0 Server, and TurboLinux, Version 10 Desktop
- Microsoft Windows NT® Server, Version 4.0 Terminal Server Edition and Windows Terminal Services for Windows 2000 and Windows 2003
- Citrix Metaframe, Version 1.8 for Windows Terminal Server, Version 4.0 and Citrix Metaframe, Version 1.8 for Windows 2000 Server
- Citrix Metaframe XP Presentation Server (Versions s, a, e) for Windows
- Apple Mac OS X, Version 10.2.1, Version 10.3 and Version 10.4

**Note:** A local client is only supported on Windows 32 bit platforms (Windows XP, 2003 and 2000).

---

### Supported browsers and Java 2 plug-ins

---

*The following browsers are supported for download of the WebSphere Host On-Demand clients from a remote WebSphere Host On-Demand server, or to run WebSphere Host On-Demand on a locally installed client*

- Netscape Navigator, Version 6.1, Version 6.2, Version 7.0, Version 7.1, Version 7.2 and Version 8.0
  - Internet Explorer, Version 5.5 and Version 6.0
  - Mozilla, Version 1.7
  - Firefox, Version 1.0 and Version 1.5
  - Browsers support on Apple Macintosh system: Microsoft Internet Explorer, Version 5.2 and Safari, Version 1
  - JRE levels supported on Apple Macintosh system: Version 1.3.1, Version 1.4.1, Version 1.4.2, and Version 1.5
  - Java plug-in support: 1.4.0, 1.4.1, 1.4.2 and 1.5 (IBM, Sun and HP)
-

---

## IBM WebSphere Host On-Demand, Version 10.0 new features at a glance (continued)

---

### Supported Web servers

---

- iPlanet Web Server Enterprise Edition, Version 6.0
- IBM HTTP Server, Version 1.3.28, Version 2.0.42, Version 2.0.47, and Version 6.0
- Microsoft IIS, Version 4, Version 5, Version 5.1 and Version 6
- Apache HTTP Server, Version 1.3, Version 2.0 and Version 2.2
- IBM Lotus® Domino®, Version 6 and Version 6.5

### Supported development environments

---

- Rational Application Developer, Version 6.0

### Supported LDAP servers

---

- IBM Directory Server, Version 4.1, Version 5.1 and Version 5.2
- IBM LDAP Server running on z/OS, Version 1.4, Version 1.5, Version 1.6 and Version 1.7

### Web application servers

---

- WebSphere Application Server - Express, Version 5.0; and WebSphere Application Server, Version 5.0, Version 5.0.2, Version 5.1 and Version 6.0
- iPlanet Application Server, Version 6.0
- Lotus Domino, Version 6

### Web Express Logon

---

- IBM Tivoli® Access Manager for e-business, Version 4.1 and Version 5.1
- Netegrity SiteMinder, Version 5.5
- IBM DB2® Universal Database™, Version 7 and Version 8

### Miscellaneous supported software

---

- IBM WebSphere Portal for Multiplatforms, Version 5.0 and Version 5.1
- Acrobat Reader (or Acrobat), Version 6 and Version 7
- CICS Transaction Gateway, Version 5.1 and later

**Note:** Acrobat Reader (or Acrobat), Version 5.0 or later is required for DBCS PDF support.

---

### For more information

To learn more about IBM Personal Communications, contact your IBM representative or IBM Business Partner, or visit:

[ibm.com/software/network/pcomm](http://ibm.com/software/network/pcomm)

To learn more about IBM WebSphere Host On-Demand, contact your IBM representative or IBM Business Partner, or visit:

[ibm.com/software/webservers/hostondemand](http://ibm.com/software/webservers/hostondemand)

To learn more about IBM Host Access Client Package, contact your IBM representative or IBM Business Partner, or visit:

[ibm.com/software/network/hostaccess](http://ibm.com/software/network/hostaccess)

To join the Global WebSphere Community, visit:

[www.websphere.org](http://www.websphere.org)



© Copyright IBM Corporation 2006

IBM Corporation  
Software Group  
Route 100  
Somers, NY 10589  
U.S.A.

Produced in the United States of America

08-06

All Rights Reserved

AIX, AIX 5L, AnyNet, CICS, DB2, DB2 Connect, DB2 Universal Database, Domino, eServer, i5/OS, IBM, the IBM logo, IBM Global Network, iSeries, Lotus, the On Demand Business logo, OS/2 Warp, OS/390, OS/400, Rational, System i, System z, Tivoli, WebSphere, Workplace, Workplace Client Technology, z/OS and zSeries are trademarks of International Business Machines Corporation in the United States, other countries or both.

Intel and Pentium are trademarks of Intel Corporation in the United States, other countries, or both.

Microsoft, Windows and Windows NT are trademarks of Microsoft Corporation in the United States, other countries or both.

Java and all Java-based trademarks and logos are trademarks of Sun Microsystems, Inc. in the United States, other countries or both.

UNIX is a trademark of The Open Group in the United States, other countries or both.

Linux is a trademark of Linus Torvalds in the United States, other countries, or both.

Other company, product and service names may be trademarks or service marks of others.

