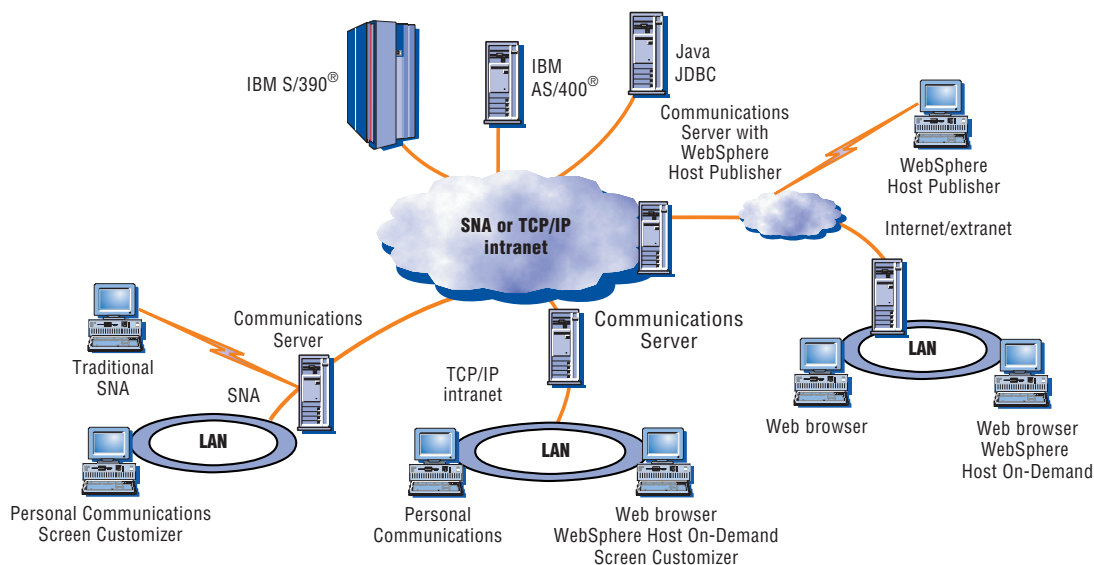


*A flexible solution for connecting
your enterprise*

IBM Communications Server



IBM Communications Server provides a comprehensive connectivity solution.

Highlights

- **Base application decisions on business needs, not on operating platforms or network protocols**
- **Provide connectivity to the intranet or Internet with a scalable, high-performance gateway server**
- **Leverage current investments and run SNA applications over TCP/IP networks**
- **Help protect business information assets from security breaches**
- **Help reduce 3270 user ID and password administrator costs with the express logon function**
- **Help boost network availability, efficiency and performance with load balancing, hot standby and HPR**

As your business needs grow, chances are, so will your network. Explosive growth and constant change in the information management and delivery arena call for versatile technologies to meet your company's growing needs. IBM Communications Server meets the challenge—offering a comprehensive package of enterprise networking solutions to effectively connect your employees, customers and trading partners across multiprotocol networks.

Power up for business flexibility

No matter where your company wants to go in making existing host applications available through the Internet, IBM Communications Server takes you there quickly and easily. With IBM Communications Server, you can leverage network assets already in place, while making the transition at your own pace. IBM Communications Server can connect your employees, customers and trading partners to the information and applications they need, independent of the underlying network. Designed to meet your company's growing e-business needs, IBM Communications Server provides fast, efficient ways to extend data to Web users.

A natural evolution

IBM has long been a leader in communication software. With the introduction of Communications Server products, we've implemented functions and connectivity based on industry-standard solutions, tailored for a wide range of platforms. Acting as a multiprotocol gateway, IBM Communications Server enables applications to run over multiple network protocols. You can run TCP/IP applications over existing SNA networks without adding a separate TCP/IP network. And you can extend SNA applications to TCP/IP users without the addition of a separate SNA network.

Reliability and flexibility

IBM Communications Server also works as a Telnet server, providing SNA network access to client applications running anywhere in your TCP/IP network. Enterprise Extender, a leading-edge solution for accessing SNA applications over TCP/IP networks, offers levels of reliability, scalability and control similar to those provided by SNA networks. Enterprise Extender uses standard Internet Protocol (IP) technology and requires no new hardware or software in the IP backbone.

Extend your business to the Web

Integrating diverse host applications and publishing them to the Web is a major step toward building your e-business — allowing fast, efficient delivery of products to the marketplace. Using IBM WebSphere® Host Publisher¹ with IBM Communications Server, you can combine information from multiple sources into convenient, Web-based applications without rewriting your existing applications. IBM WebSphere Host Publisher delivers a competitive advantage by extending your sales channels, providing new Web browser-based services and helping improve user productivity with new interfaces for your current applications.

Security

IBM Communications Server offers TN3270E and TN5250² servers, supporting Secure Sockets Layer (SSL) authentication and encryption across the TCP/IP network. The built-in security of SSL helps protect your data from eavesdropping, tampering or message forgery over TCP/IP, utilizing SSL-enabled TN3270 and TN5250 clients connected to IBM Communications Server. Session-level encryption enables you to encrypt workstation data between the server and the host across SNA networks.

Streamlined 3270 access

With the express logon function of IBM Communications Server, a user running a 3270 client session can log on to a host system without having to enter the user ID and password as the means of authenticating the user. One advantage of using this function is that it reduces the time spent by an administrator maintaining host user IDs and passwords. It also reduces the number of user IDs and passwords that users have to remember.

To take advantage of the express logon function, a TN3270 client, such as IBM WebSphere Host On-Demand, Version 5.0 and IBM Communications Server for OS/390® as found in IBM OS/390®, Version 2 Release 10, is required.

Network performance

IBM Communications Server can help improve the availability and performance of your network. Using High-Performance Routing (HPR), it offers the ability to reroute traffic around network failures and congestion. Additionally, it provides highly intelligent session management to help minimize network congestion and maximize throughput.

The hot standby² function of IBM Communications Server helps improve network availability by triggering a backup server if your critical server ever fails. And, IBM Communications Server supports load balancing for TN3270E- and TN5250-connected clients of the same host resource, when clients also support Service Locator Protocol (SLP).

Simplified administration

IBM Communications Server allows you to perform server administration over an intranet or the Internet. From either a remote or local workstation, the administrator can manage IBM Communications Server through a Web browser.

IBM Communications Server is enabled for Tivoli® software to centrally manage the devices and applications in your network. IBM Communications Server is certified Tivoli Ready™ on IBM OS/2 WARP® and Microsoft® Windows NT®.

Power programming

IBM Communications Server provides a sophisticated programming interface, supporting a wide range of APIs for the program developer. These APIs offer convenient ways for the programmer to access IBM Communications Server functions.

For more information

To learn more about IBM Communications Server, visit:

ibm.com/software/network/commserver

IBM Communications Server at a glance

Platforms

**IBM AIX
Version 6.0**

**Windows NT and
Windows 2000
Version 6.1.1**

**IBM OS/2 WARP
Version 6.1**

Hardware requirements	Software requirements	Memory requirements
<ul style="list-style-type: none"> • IBM RS/6000®, IBM POWERserver® Power PC, Powerstation computers, IBM 9076 SP2® Scalable POWERparallel® Systems or other IBM AIX® platform • Appropriate communication adapters, cables and device drivers • 46MB to 70MB of permanent space, depending on features installed • At least 2MB of additional hard disk space for installation • 4.1MB to 6MB of hard disk space per language for messages, depending on language • 16MB of hard disk space for softcopy documentation 	<ul style="list-style-type: none"> • AIX, Version 4.1.5, or higher • Motif level 1.2 support (part of AIX base operating system; required for Motif administration) 	<ul style="list-style-type: none"> • 64MB of real memory for effective performance
<ul style="list-style-type: none"> • Intel® Pentium® processor, minimum 166MHz for Windows® 2000, 100MHz for Windows NT 	<ul style="list-style-type: none"> • Windows NT Server, Version 4.0, or higher, or Windows 2000 Server, Advanced Server or Professional Server 	<ul style="list-style-type: none"> • Minimum of 32MB of real memory
<ul style="list-style-type: none"> • Intel 486 (or compatible microprocessor), minimum 166 MHz, or higher 	<ul style="list-style-type: none"> • OS/2 WARP Server, Version 4.0 or OS/2 WARP, Version 4.0 	<ul style="list-style-type: none"> • Minimum of 32MB of real memory

IBM Communications Server features and benefits by platform

	IBM OS/2 WARP Version 6.1	Windows NT and Windows 2000 Version 6.1.1	IBM AIX Version 6.0
SNA support			
SNA gateway	X	X	X
APPN® EN and NN function	X	X	X
Branch extender	X	X	X
High-performance routing			
Intermediate node routing ANR	X	X	X
HPR connection endpoint RTP	X	X	X
3270 support over APPN	X	X	X
Data compression	X	X	
LU 6.2 synchpoint	X	X	X
SNA session level encryption	X	X	
Multiprotocol support			
TN3270E server	X	X	X
TN5250 server		X	
SSL security	X	X	X
Express logon function	X	X	X
WebSphere Host Publisher		X	X
Enterprise Extender (HPR/IP)	X	X	X
Sockets over SNA access node	X	X	X
APPC over TCP/IP access node	X	X	X
SNA over TCP/IP access node	X	X	
Sockets over SNA gateway	X	X	X
APPC over TCP/IP gateway	X	X	X
SNA over TCP/IP gateway	X	X	
IPX over SNA gateway	X		
IPX over TCP/IP gateway	X		
NetBIOS over SNA gateway	X		
NetBIOS over TCP/IP gateway	X		
Split stack for SNA over IP/IPX		X	
Access features	X		

Additional IBM Communications Server features and benefits at a glance



Supported communication services and protocols

- Asynchronous³
- ATM (LAN emulation)
- EIA-422A
- EIA-232D
- Ethernet
- IBM ESCON[®]channel, including multipath channel support and block multiplexer⁴
- FDDI
- Frame relay
- Hayes Autosync³
- IBM Token-Ring network
- ISDN⁵
- SDLC
- Smart Modem⁶
- Twinaxial³
- V.35
- X.21
- X.25
- V.25 bis

Supported APIs

- LU application interface (LUA) request unit interface (RUI), supporting dependent LU types 0, 1, 2, 3
 - Common Programming Interface for Communications (CPI-C) and APPC APIs supporting both dependent and independent LU 6.2
 - Host Access Class Library (HACL)
 - CPI-C for Java[™] technology
 - WinSock²
 - Common Services
 - Node operator facility (NOF)
 - SNA management services
-

© Copyright IBM Corporation 2001

IBM Corporation
Software Communications
Route 100, Building 1
Somers, NY 10589
U.S.A.

Produced in the United States of America
03-01
All Rights Reserved

AIX, APPN, AS/400, the e-business logo, ESCON, IBM, the IBM logo, OS/2 WARP, POWERparallel, POWERserver, RS/6000S/390, SP2 and WebSphere are trademarks of International Business Machines Corporation in the United States, other countries or both.

Tivoli and Tivoli Ready are trademarks of Tivoli Systems Inc. in the United States, other countries or both.

Intel and Pentium are trademarks of Intel Corporation in the United States, other countries or both.

Microsoft, Windows and Windows NT are trademarks of Microsoft Corporation in the United States, other countries or both.

Java and all Java-based trademarks and logos are trademarks of Sun Microsystems, Inc. in the United States, other countries or both.

¹ IBM WebSphere Host Publisher is currently available for Windows NT and AIX platform users.

² Supported only by IBM Communications Server for Windows NT and Windows 2000, Version 6.1.

³ Supported by IBM Communications Server for Windows NT and Windows 2000, Version 6.1.1 and IBM Communications Server for OS/2 WARP, Version 6.1.

⁴ Supported by IBM Communications Server for Windows NT and Windows 2000, Version 6.1.1 and IBM Communications Server for AIX, Version 6.0.

⁵ Supported by IBM Communications Server for OS/2 WARP, Version 6.1.

⁶ Supported by IBM Communications Server for AIX, Version 6.0.

Other company, product and service names may be trademarks or service marks of others.



For OS/2 WARP and Windows NT.