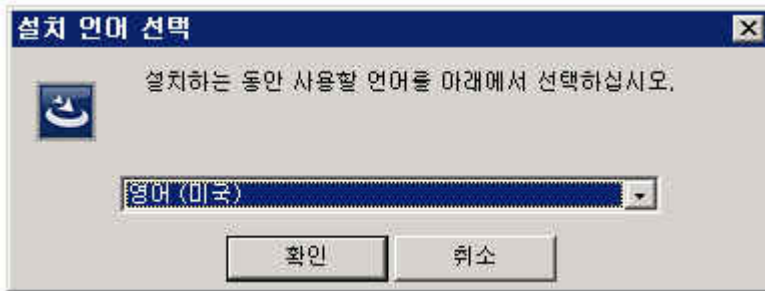


Contents

1. FastBack Server component 설치	3
2. FastBack Client component 설치	7
3. FastBack Server 구성	12
4. Backup 구성 및 Schedule	15
4-1-1. Client Group 생성	15
4-2-1. Backup Schedule 생성	17
4-3-1. Backup Policy 생성	18
5. Backup Monitoring	21
6. Restore	22
6-1-1. Volume-level Restore	22
6-2-1. FastBack Server에서 FastBack Mount/instant Restore	23
6-3-1. FastBack Client에서 FastBack Mount/instant Restore	26
6-4-1. FastBack Mount/instant Restore - Repository 경로 참조	31

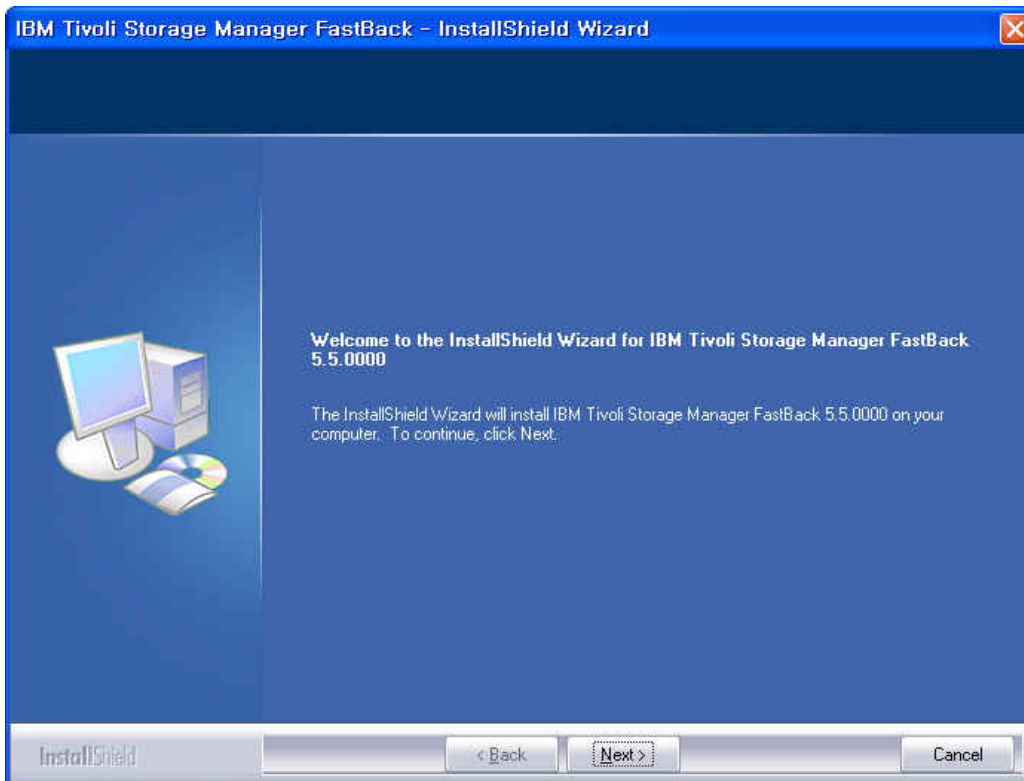
1. FastBack Server component 설치

1-1. setup.exe 실행.



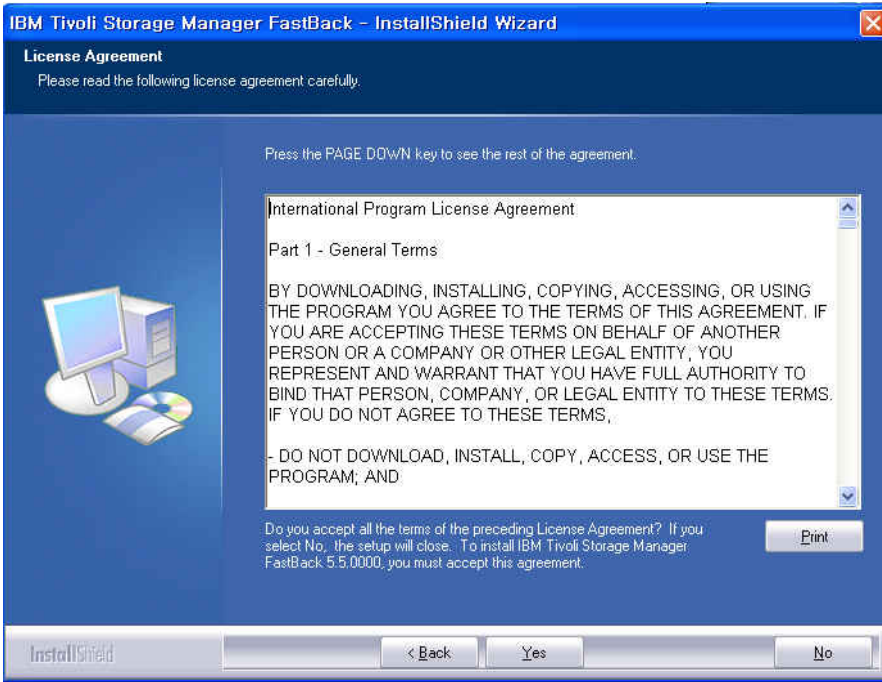
설치하는 동안에만 사용하는 언어이며 한국어 선택 시 글자가 일부 깨져서 나옴.

1-2. InstallShield Wizard



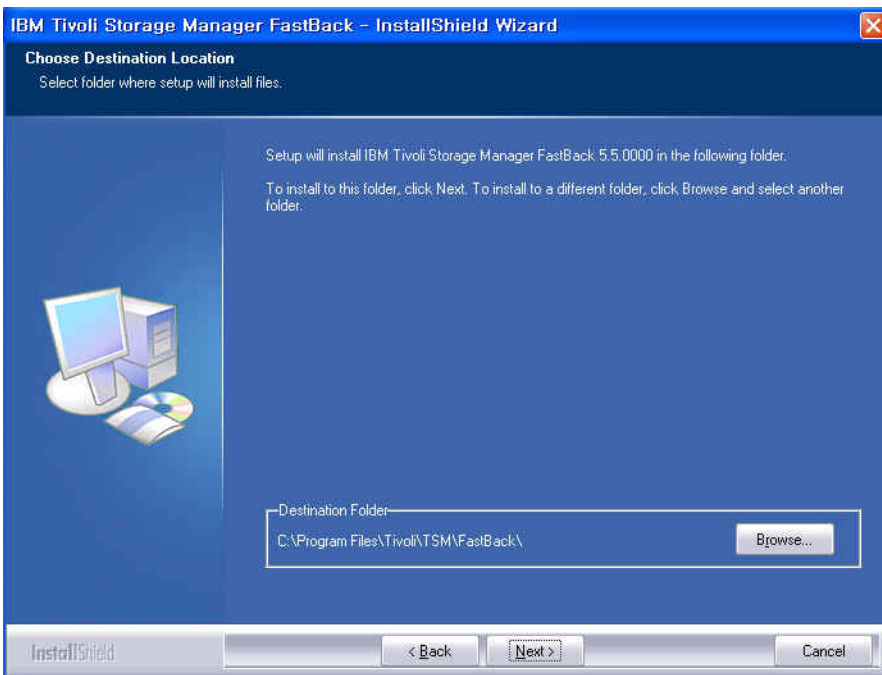
“Next”.

1-3. InstallShield Wizard - License Agreement



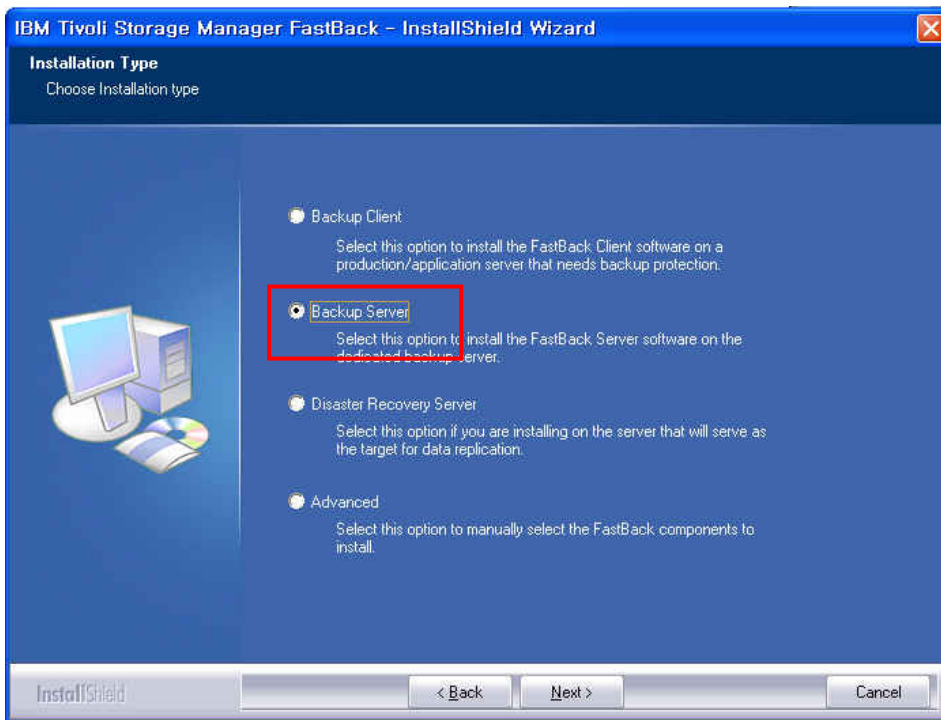
“Yes”.

1-4. InstallShield Wizard. - 기본 설치 경로 확인.



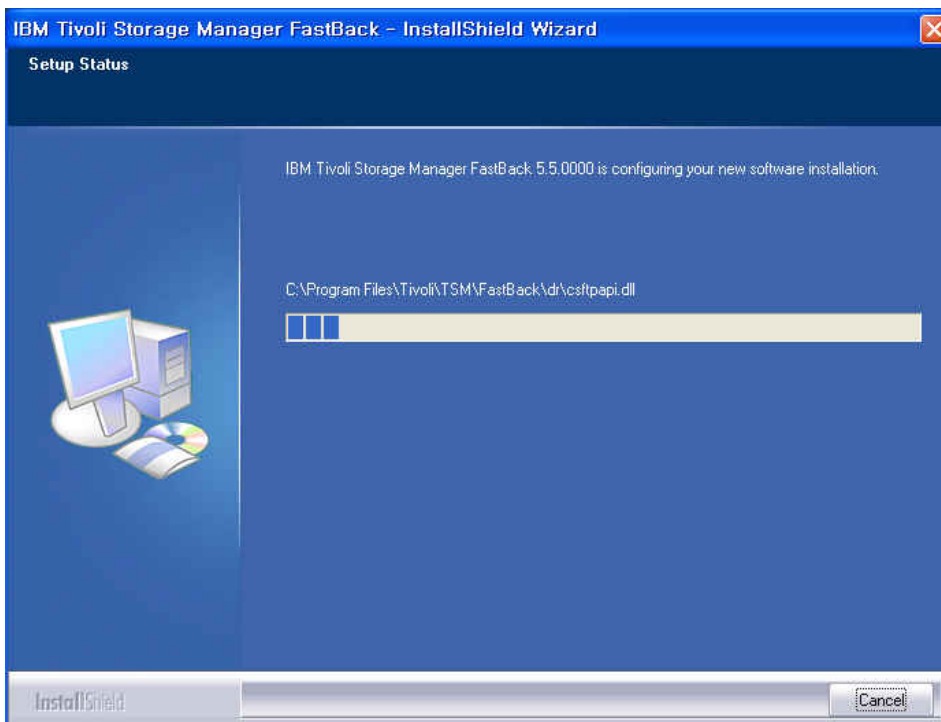
“Next”.

1-5. InstallShield Wizard. - 설치 유형 선택.

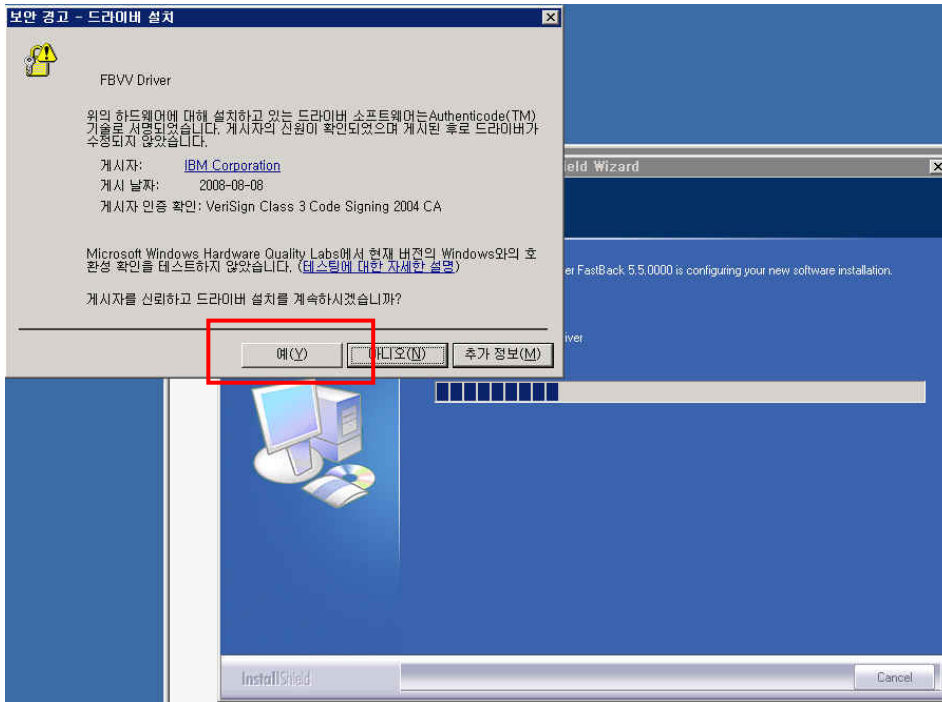


Backup Server 선택 후 “Next”.

1-6. InstallShield Wizard.

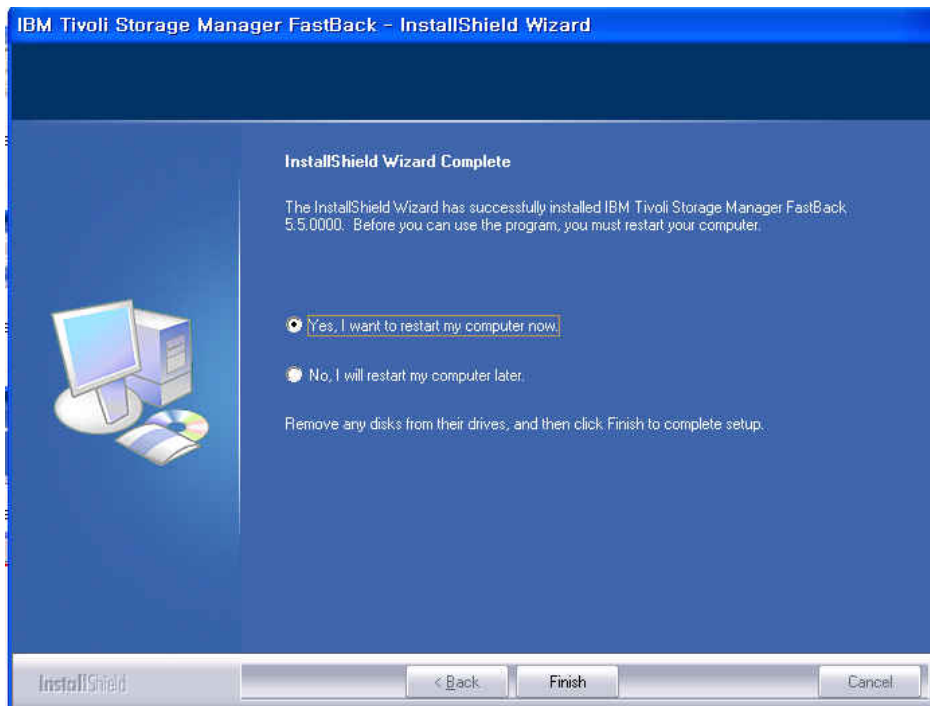


1-7. InstallShield Wizard. – FBVV(FastBackVirtualVolume) 설치.



설치 중간에 FBVV를 설치 할 것인지 물어보면 “Yes”.

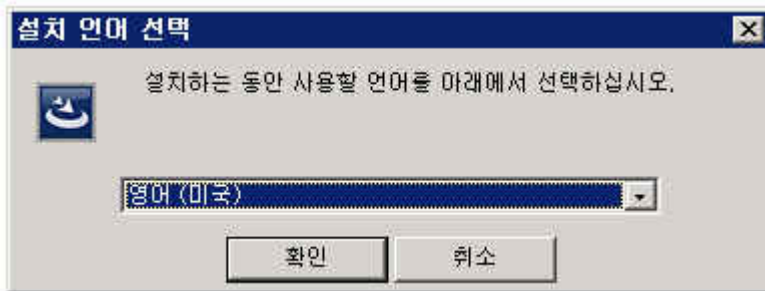
1-8. InstallShield Wizard. – 설치 완료 후 재부팅.



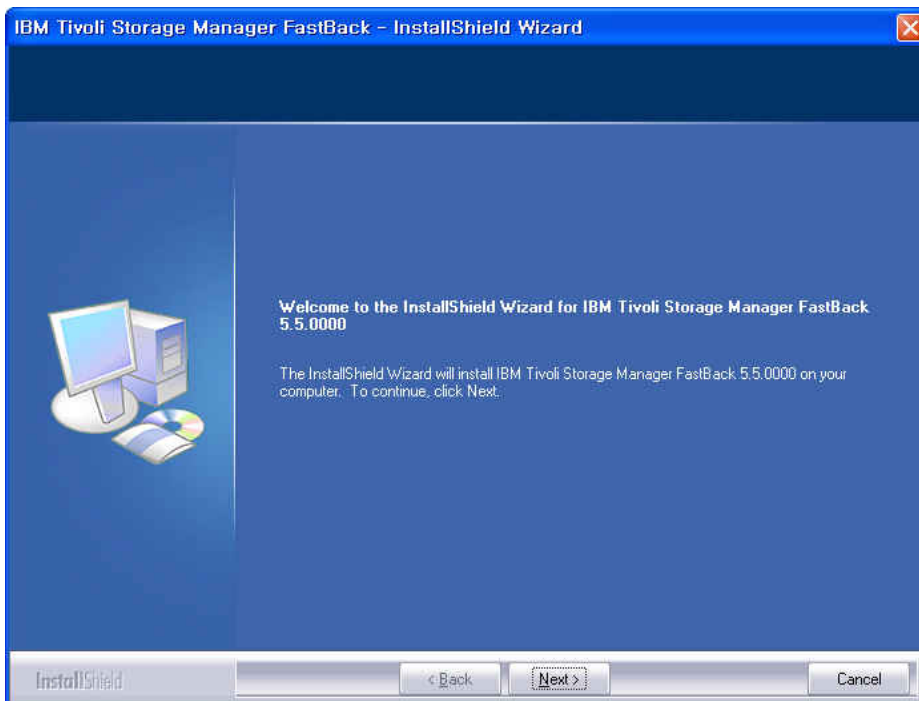
“Yes” 를 선택 후 “Finish” 클릭하면 Windows가 재부팅 됨.

2. FastBack Client component 설치

2-1. setup.exe 실행.



설치하는 동안에만 사용하는 언어이며 한국어를 선택해도 되지만 글자가 일부 깨져서 나옴.
2-2. InstallShield Wizard.



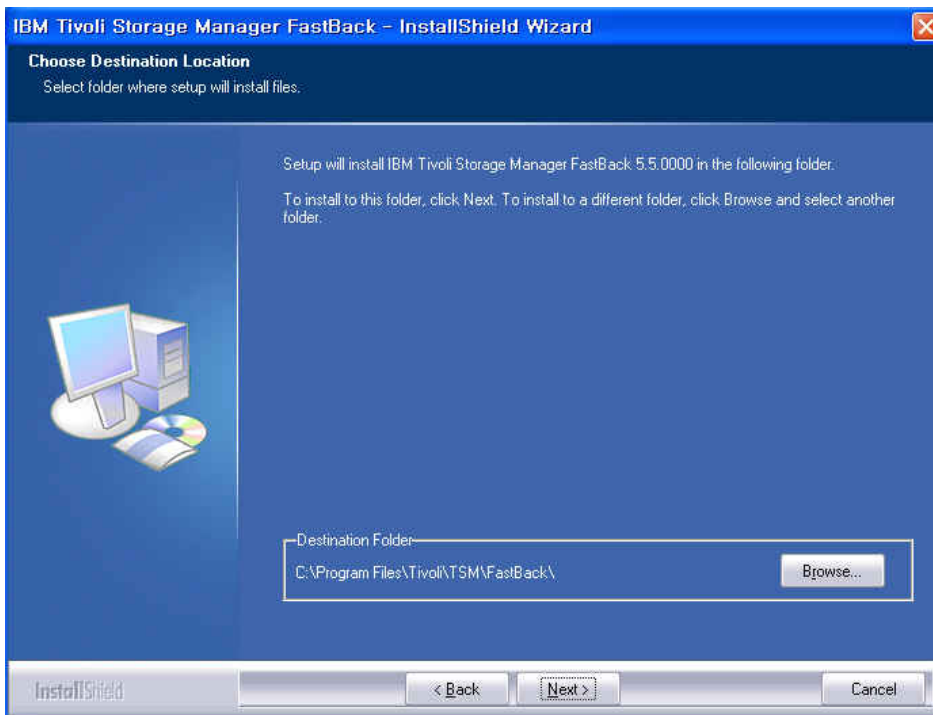
“Next”.

2-3. InstallShield Wizard - License Agreement

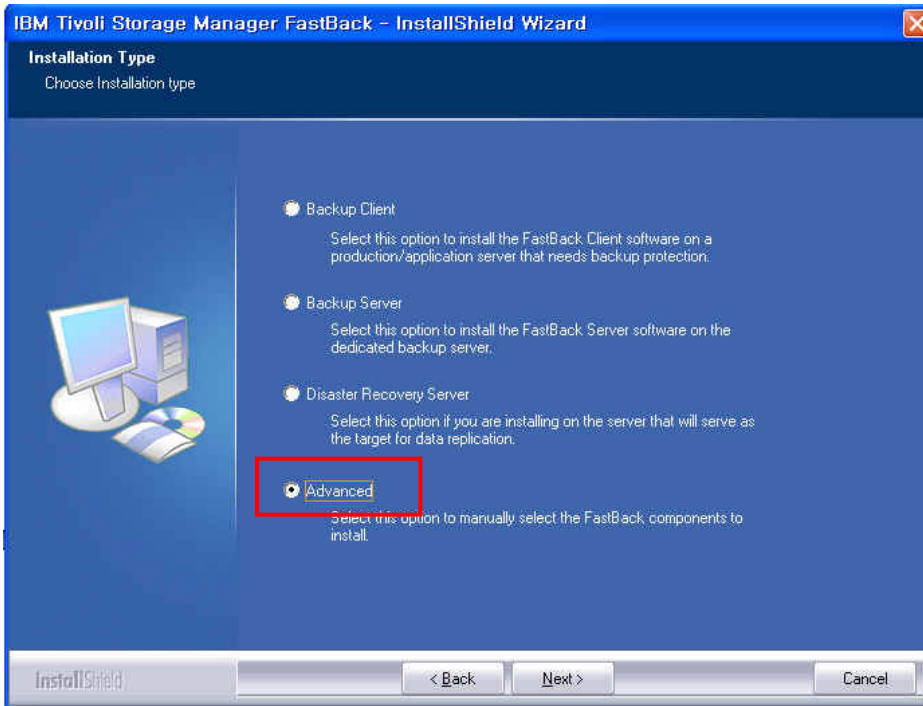


“Yes”.

2-4. InstallShield Wizard. - 기본 설치 경로 확인.

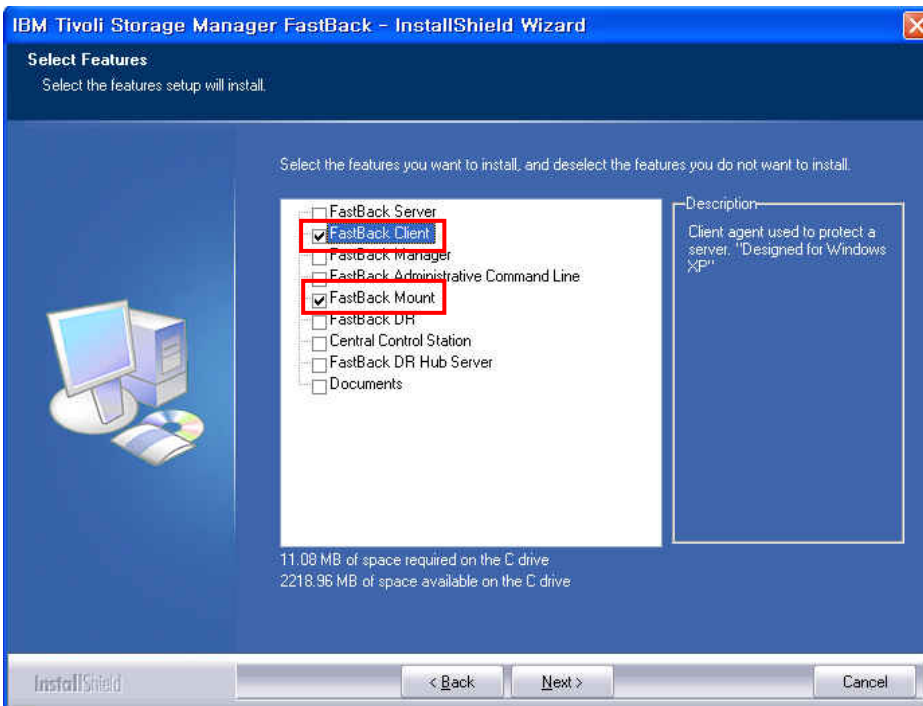


2-5. InstallShield Wizard. - 설치 유형 선택.



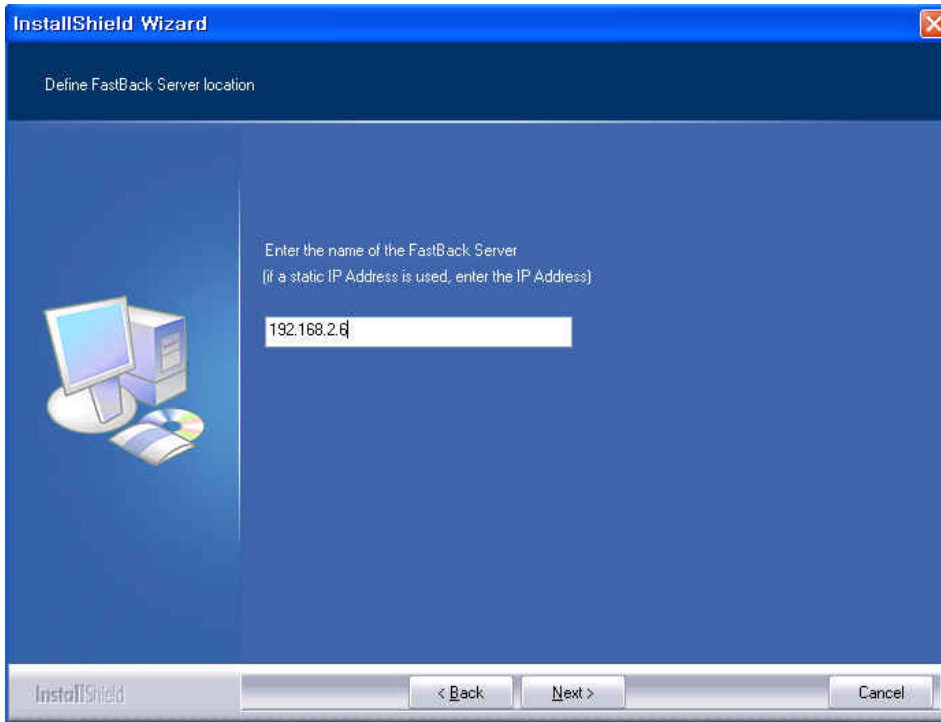
Advanced 선택 후 “Next”.

2-6. InstallShield Wizard. - 설치 유형 선택.



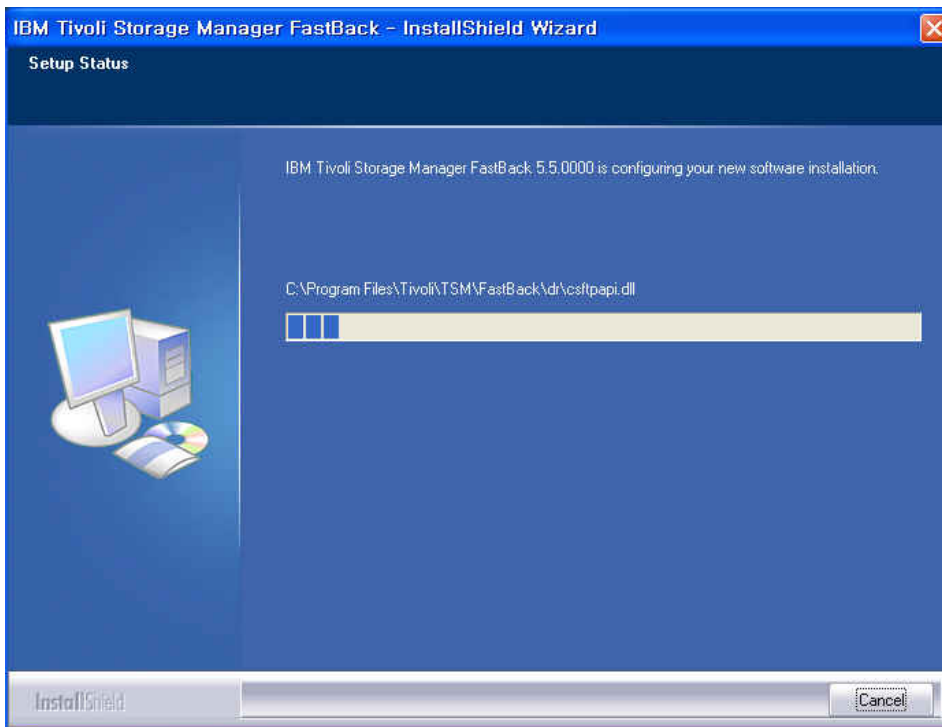
FastBack Client 와 FastBack Mount (백업 대상에서도 VirtualMount를 원하는경우) 선택 후 “Next”. (2-5. 에서 Backup Client를 선택하면 FastBackMount는 미설치.)

2-7. InstallShield Wizard. – FastBack Server 의 IP Address 입력.

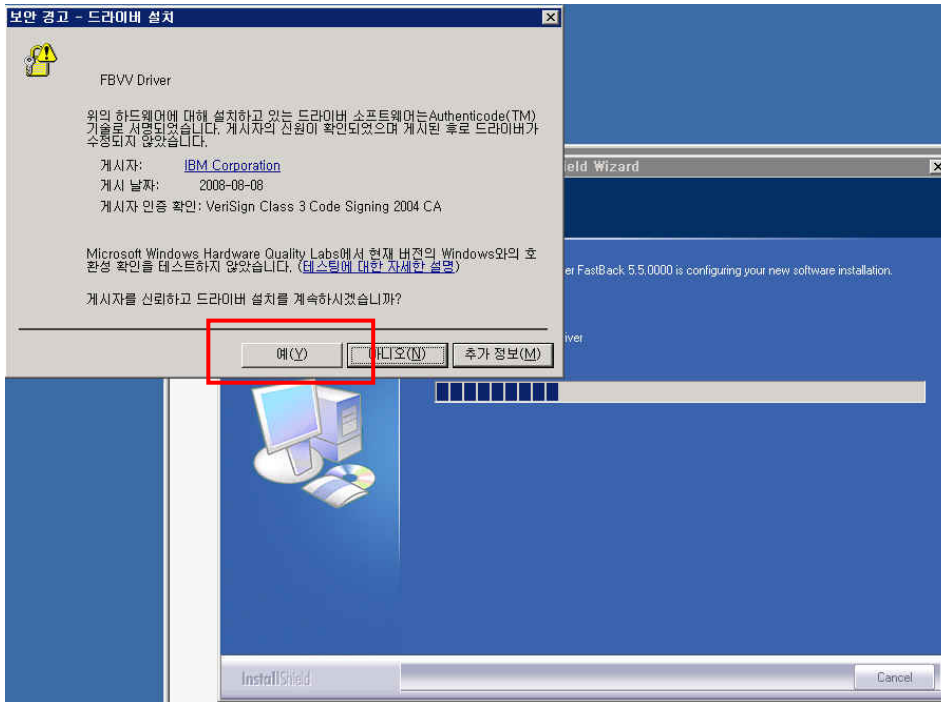


IP Address 입력 후 “Next”.

2-7. InstallShield Wizard.

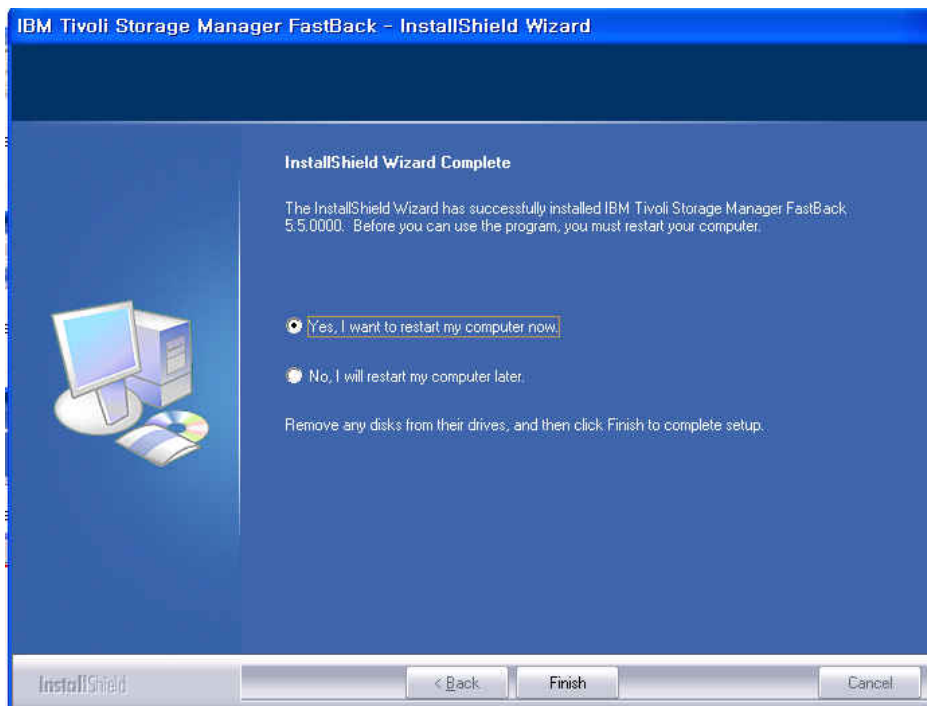


2-8. InstallShield Wizard. – FBVV(FastBackVirtualVolume) 설치.



설치 중간에 FBVV를 설치 할 것인지 물어보면 “Yes”.

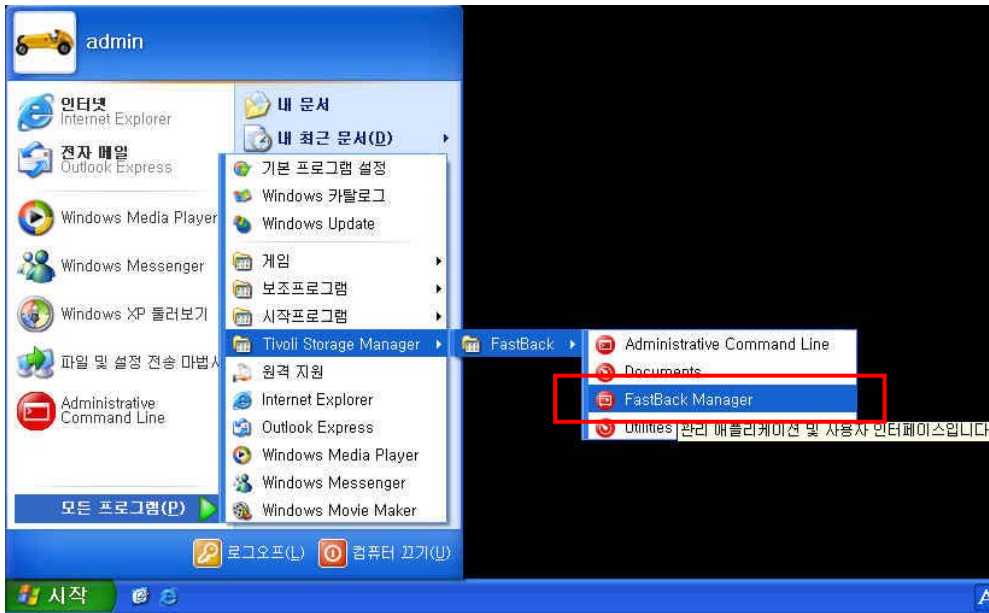
2-9. InstallShield Wizard. – 설치 완료 후 재부팅.



“Yes” 를 선택 후 “Finish” 클릭하면 Windows가 재부팅 됨.

3. FastBack Server 구성.

3-1. FastBack Server가 설치된 서버에서 FastBack Manager 실행.



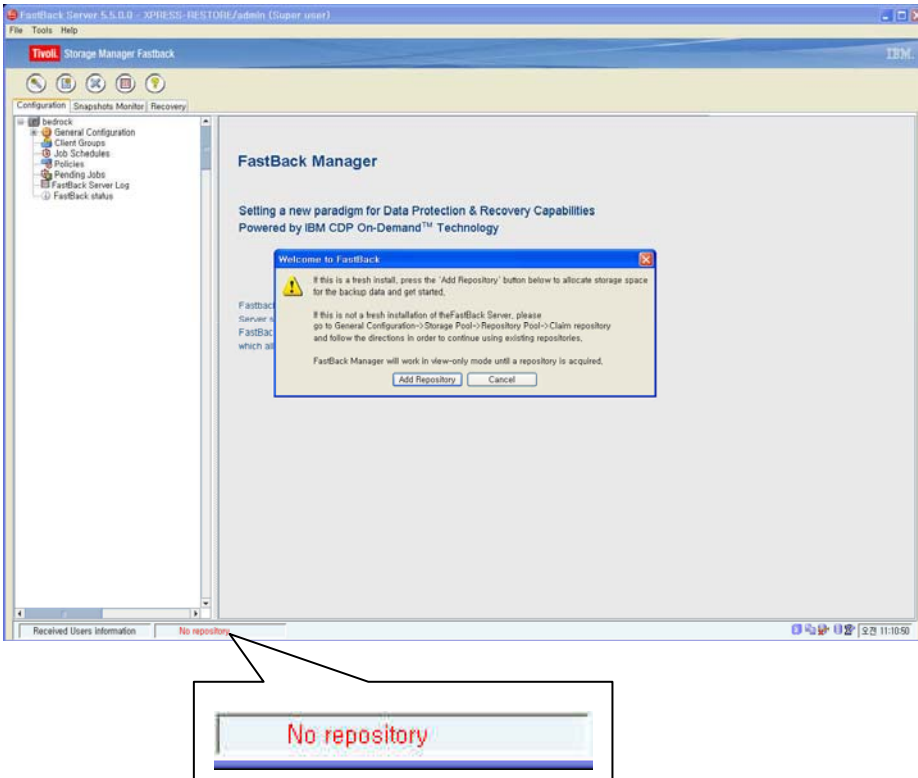
[시작]-[모든 프로그램]-[Tivoli Storage manager]-[FastBack]-[Fastback Manager] 실행
(다른 컴퓨터에 FastBack Manager를 설치하여 관리할 수도 있음.)

3-2. FastBack Manager 로그인.



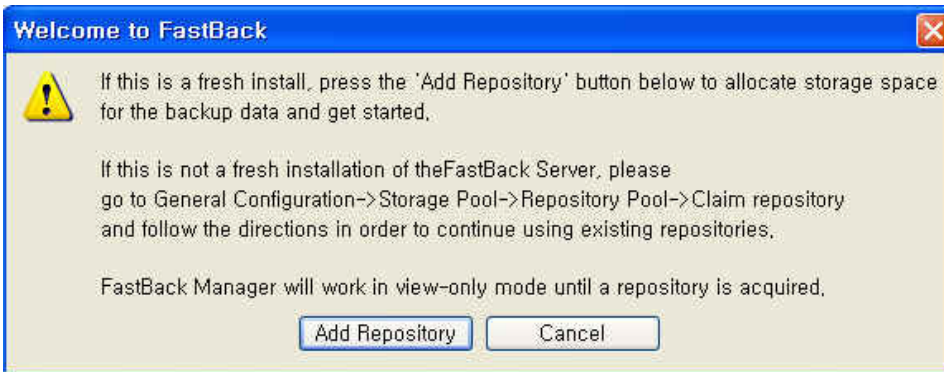
XPRESS-RESTORE Domain 이 활성화되면 User Name: **admin** Password: **admin123**
입력 후 "Login".

3-3. FastBack Manager.



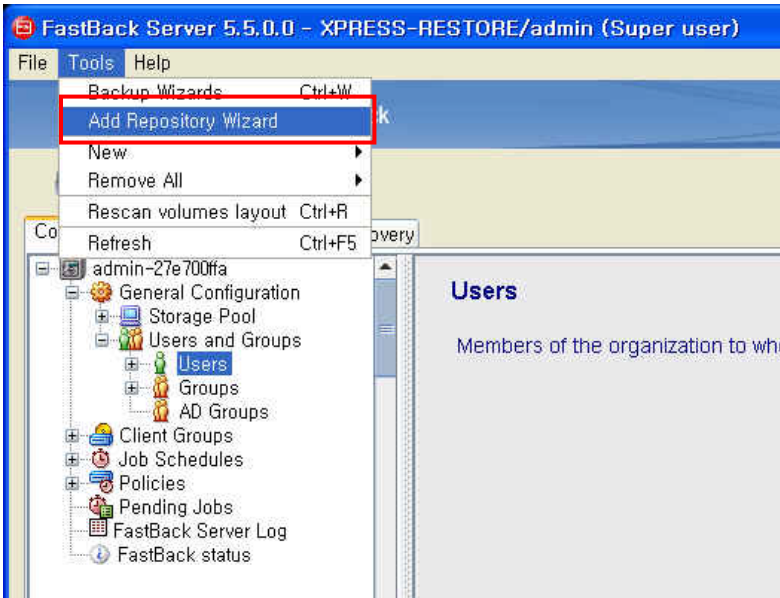
처음 FastBack Manager 접속 시 백업된 Data가 저장될 Repository가 없다는 메시지가 좌측하단에 표시되며 Repository를 지정하는 팝업이 표시됨.

3-4. FastBack Manager – Repository 지정.

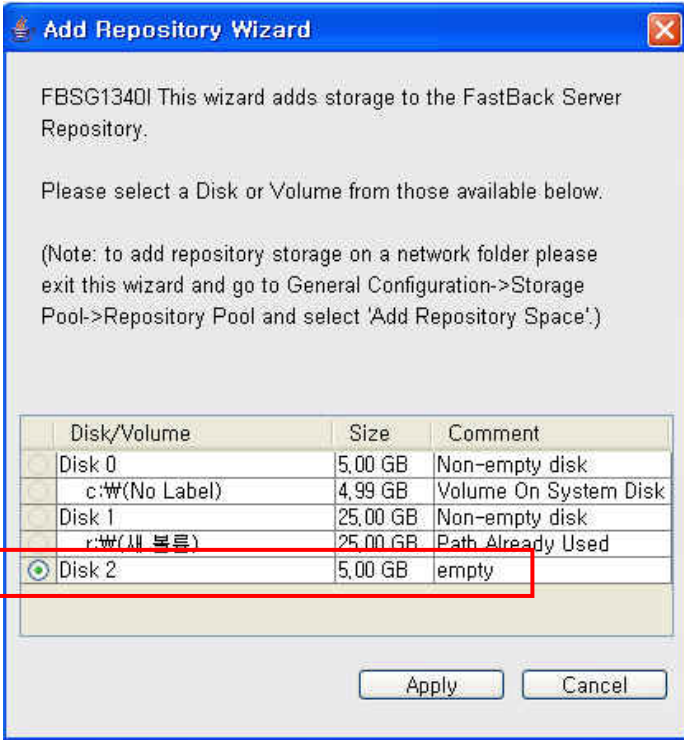


“Add Repository”.

(Cancel 한 경우 [Tools]-[Add Repository Wizard]를 클릭하면 Repository를 지정할 수 있음.)



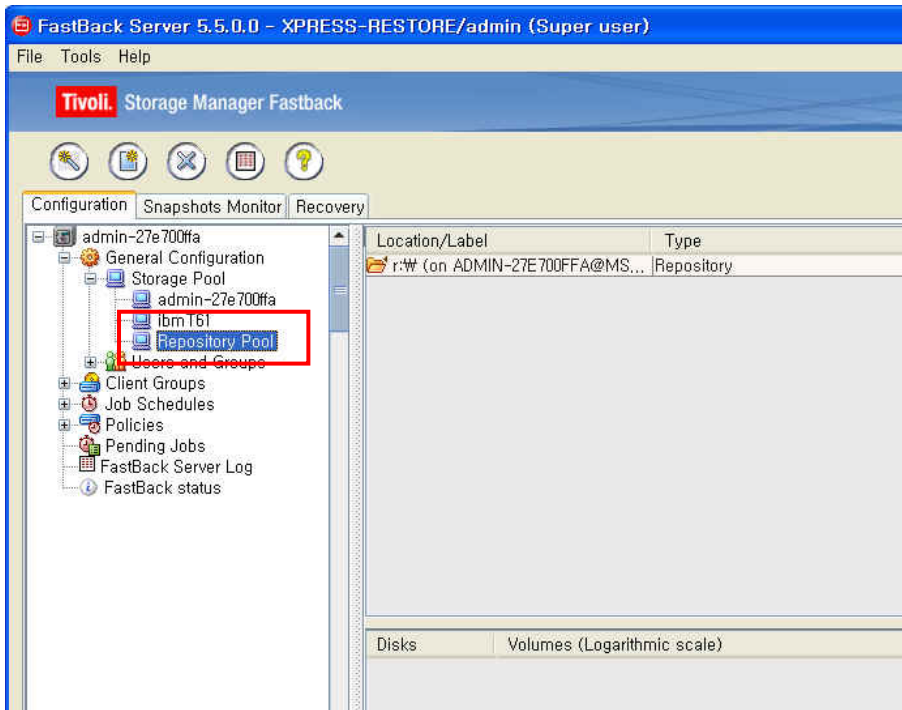
3-5. FastBack Manager – Repository 지정.



Windows System이 사용하고 있지 않은 Disk를 Repository로 지정 할수 있음. (필요한 경우 Disk를 추가)

Disk 또는 Drive 선택 후 “Apply”.

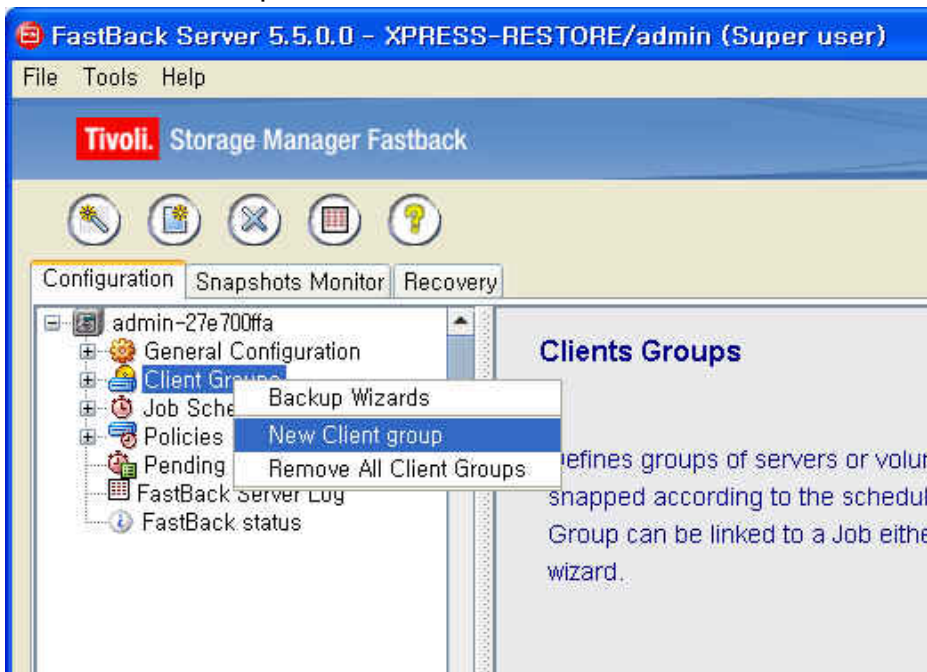
3-6. FastBack Manager – Repository 확인.



Configuration 탭에서 [General Configuration]-[Storage Pool]-[Repository Pool]에서 지정한 Repository 확인.

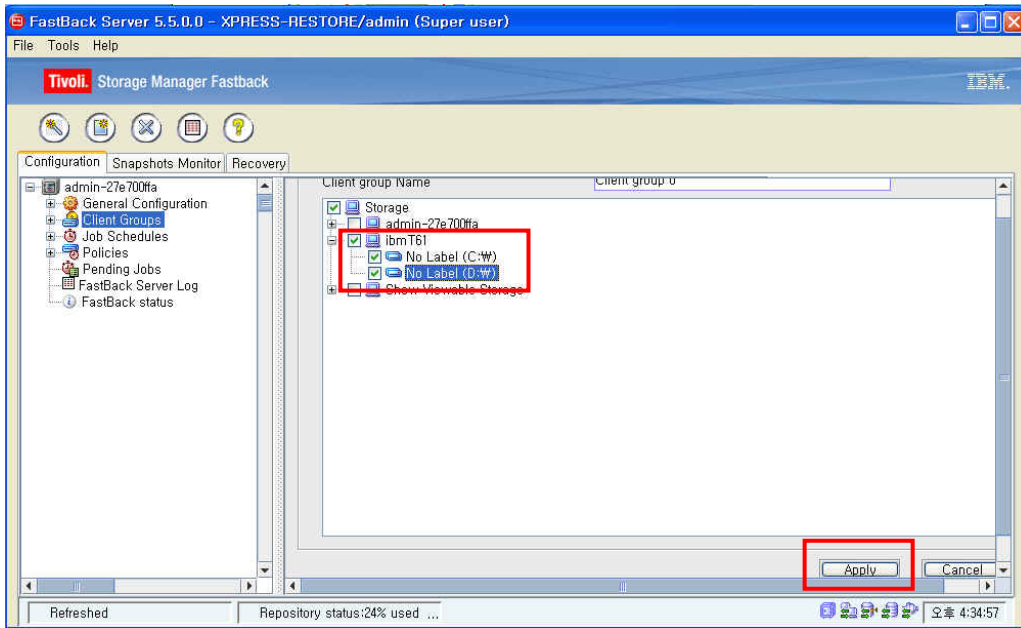
4. Backup 구성 및 Schedule

4-1-1. Client Group 생성.



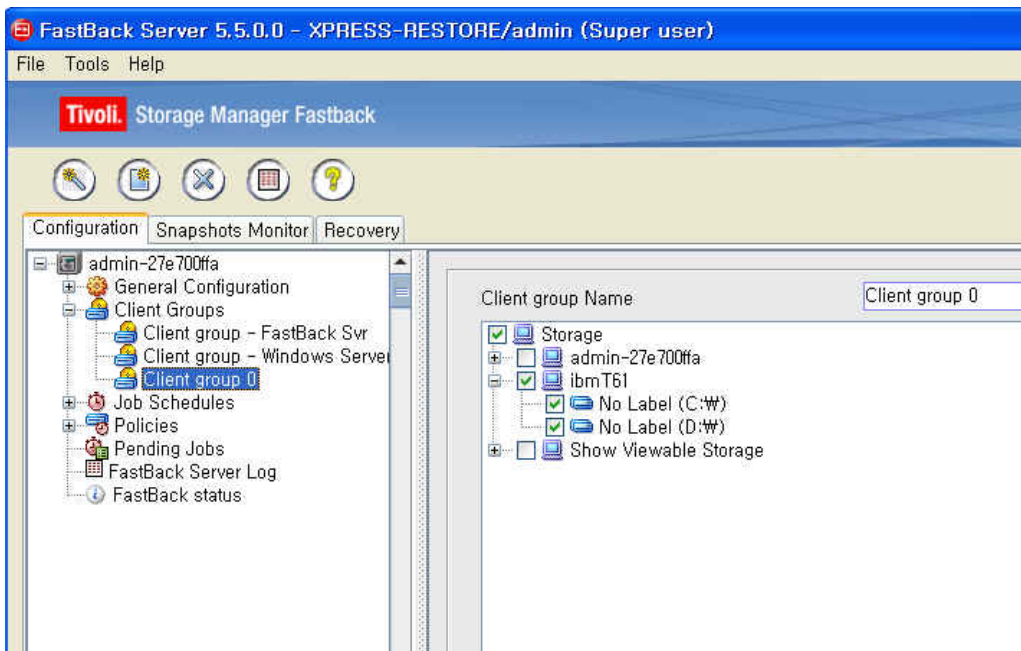
Configuration 탭에서 [Client Group] 우 클릭 -[New Client group] 클릭

4-1-2. Client Group 생성.



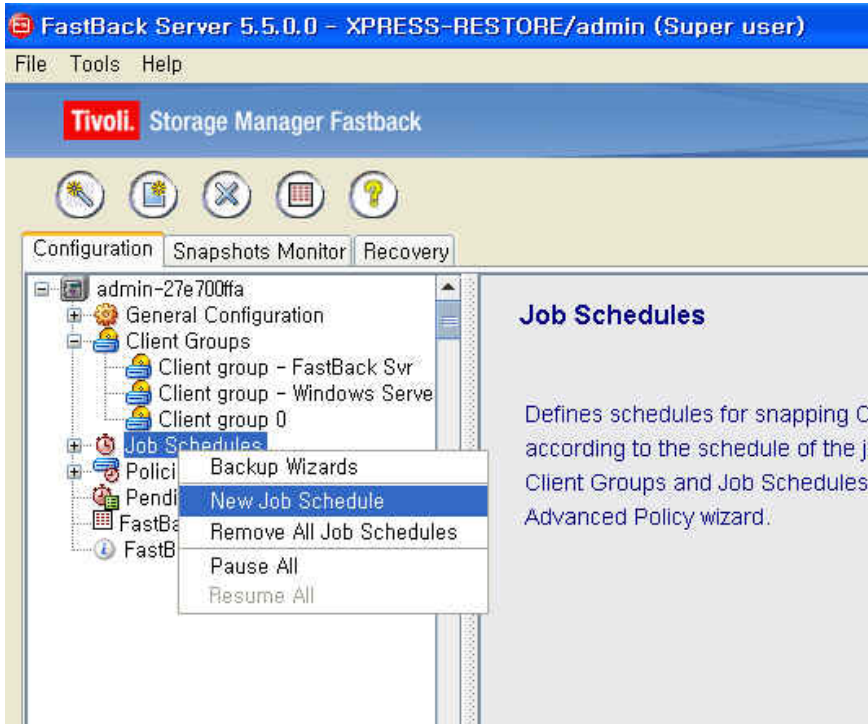
[Storage]-컴퓨터 이름으로 등록된 Backup 대상의 원하는 볼륨을 선택 후 “Apply”

4-1-3. Client Group 확인.



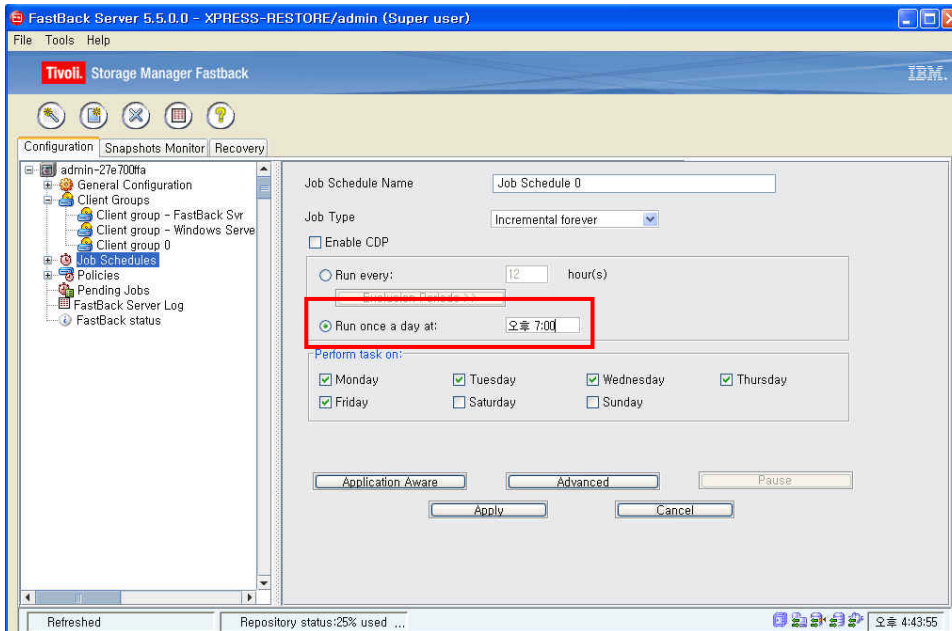
Configuration 탭의 [Client Groups]에서 생성된 Client Group 확인.

4-2-1. backup Schedule 생성.



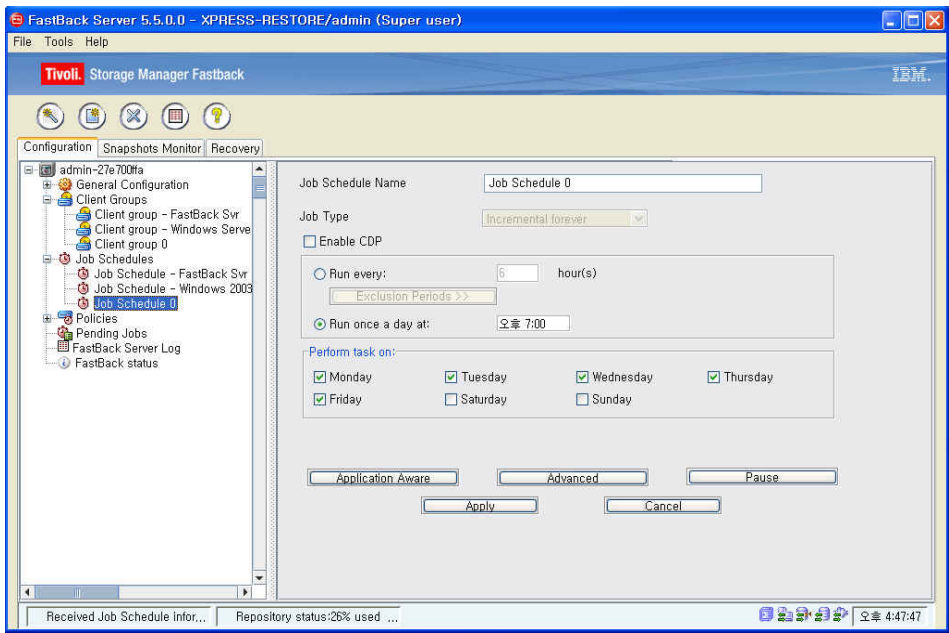
Configuration 탭에서 [Job Schedules] 우 클릭 - [New Job Schedules] 클릭.

4-2-2. backup Schedule 생성.



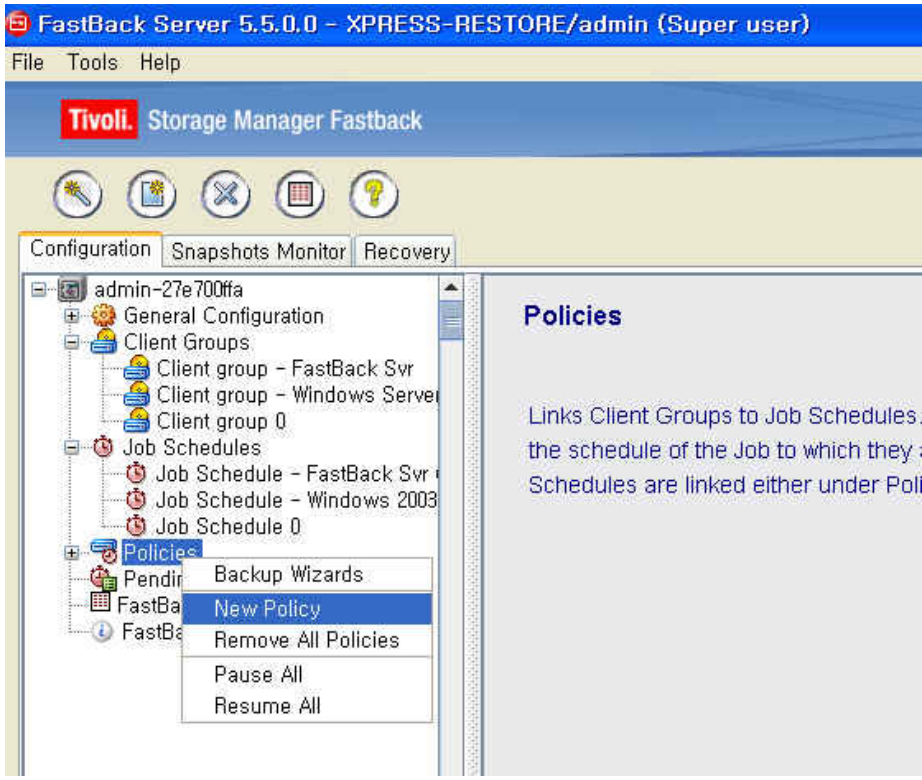
[Run once a day at:] 선택 후 원하는 백업 시작 시간을 “오후 7:00” 같은 형식으로 입력 후 “Apply”.

4-2-3. backup Schedule 확인.



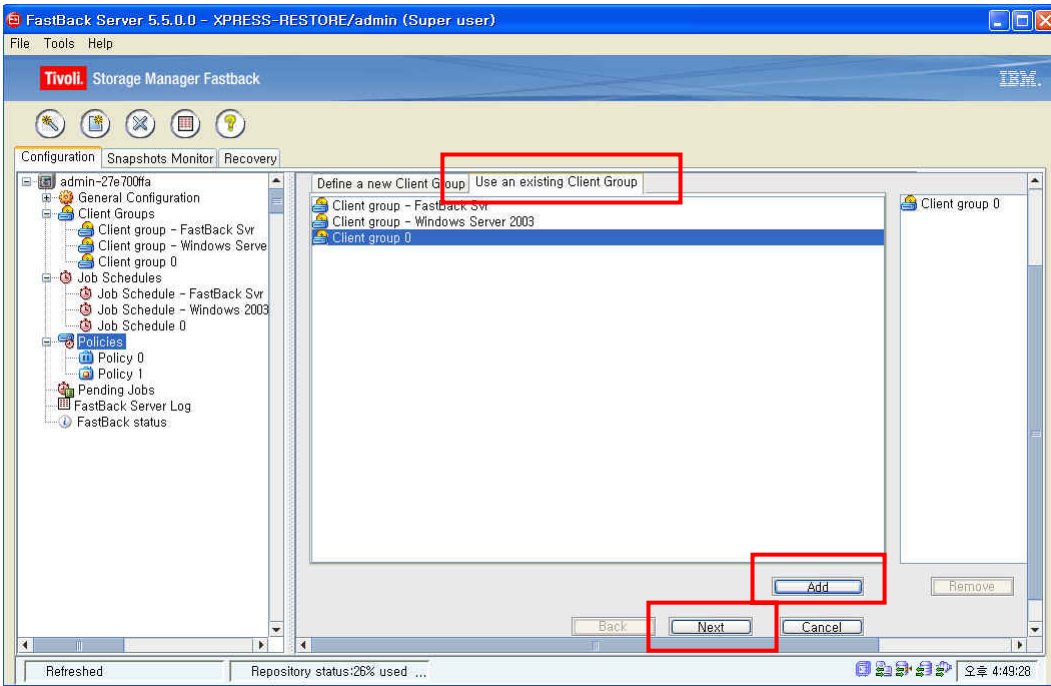
Configuration 탭의 [Job Schedules]에서 생성된 Schedule 확인.

4-3-1. backup Policy 생성.



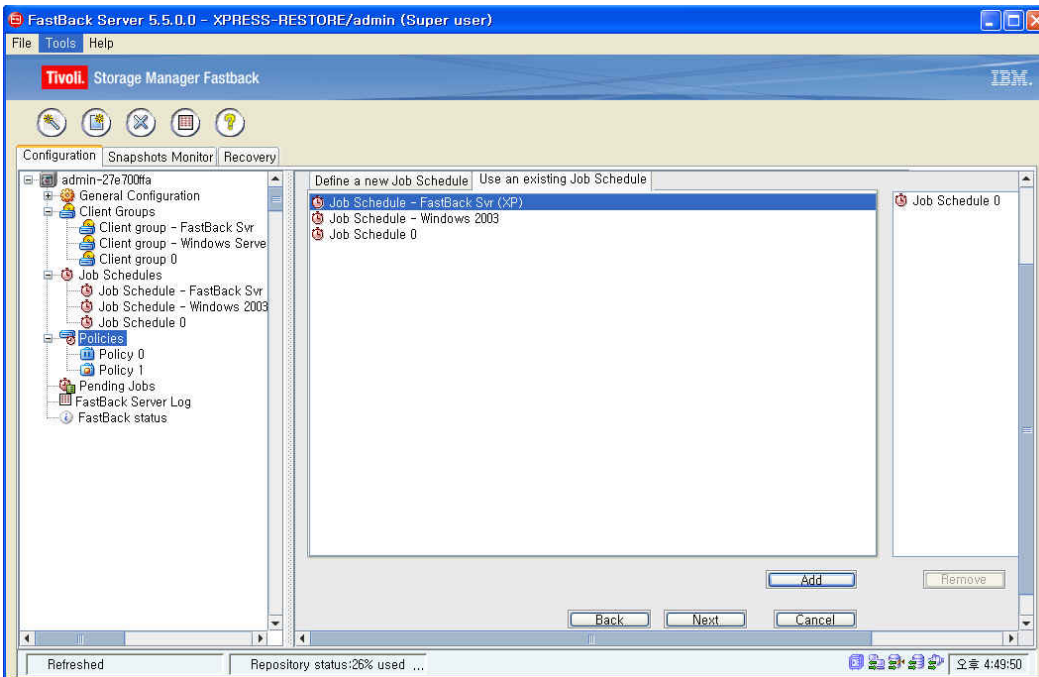
Configuration 탭의 [Policies] 우 클릭 - [New Policy] 클릭

4-3-2. backup Policy 생성.



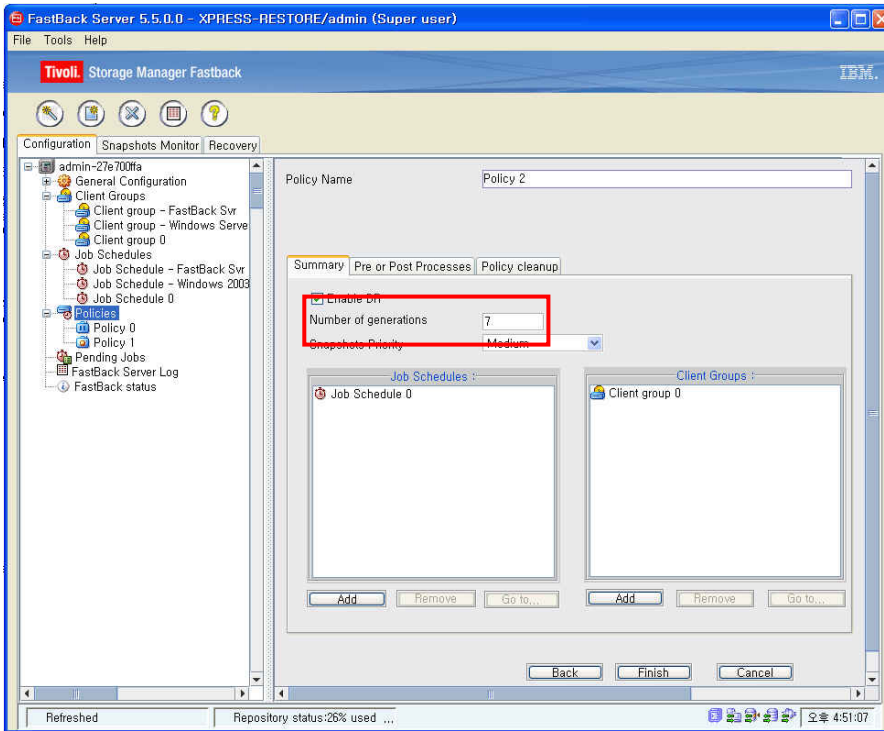
[Use an existing client Group] 을 클릭하여 Client Group 선택 후 “Add” - “Next”

4-3-3. backup Policy 생성.

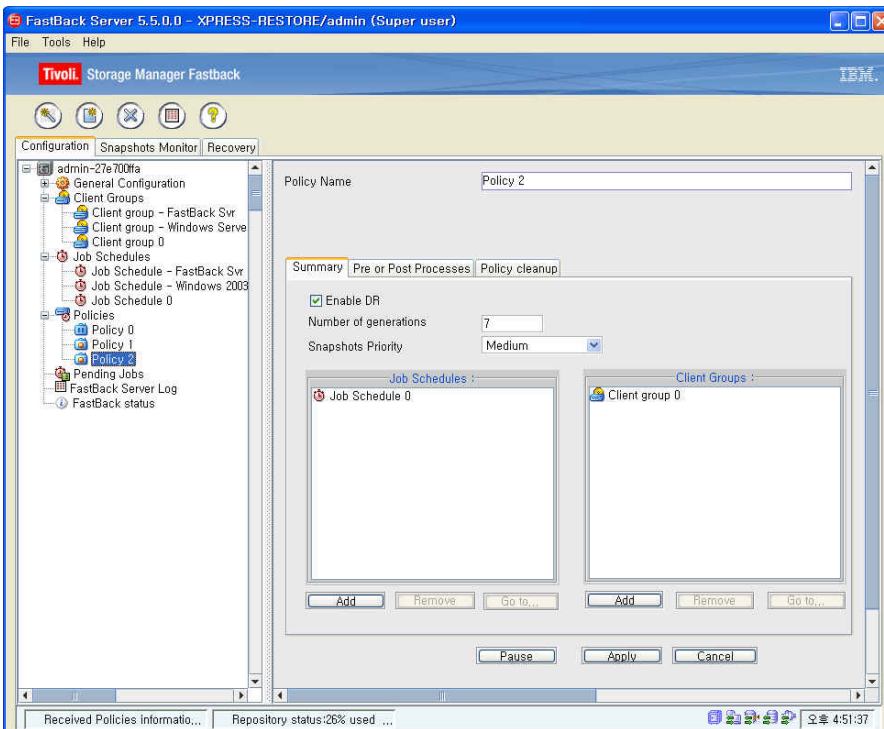


[Use an existing Job Schedules] 을 클릭하여 Job Schedules 0 선택 후 “Add” – “Next”

4-3-4. backup Policy 생성.



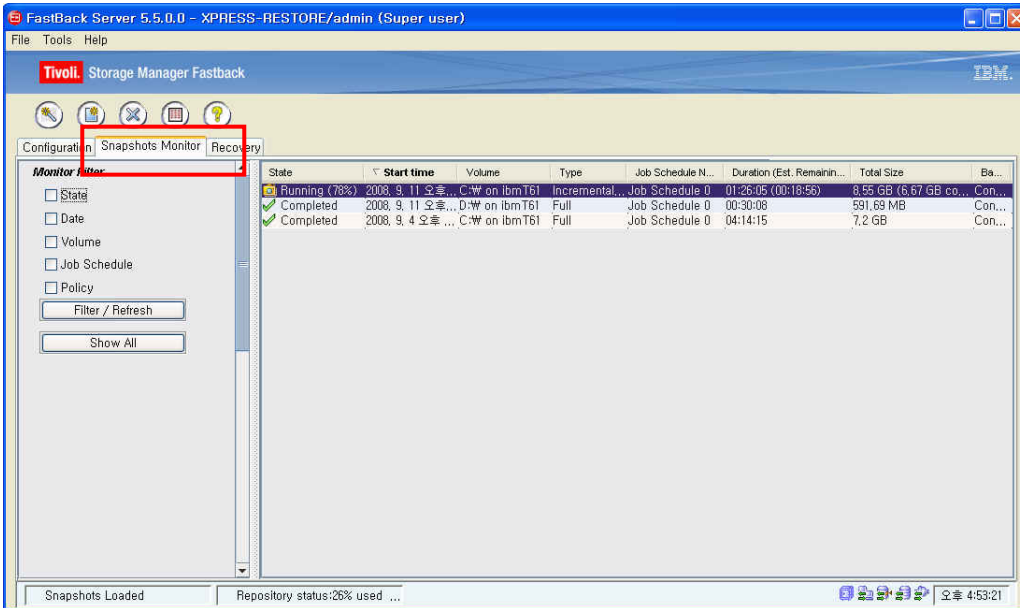
Number of generation 항목에 Backup 보관 개수를 입력 후 “Finish”
4-3-5. backup Policy 확인.



Configuration 탭의 [Policies] 에서 생성된 Policy 확인.

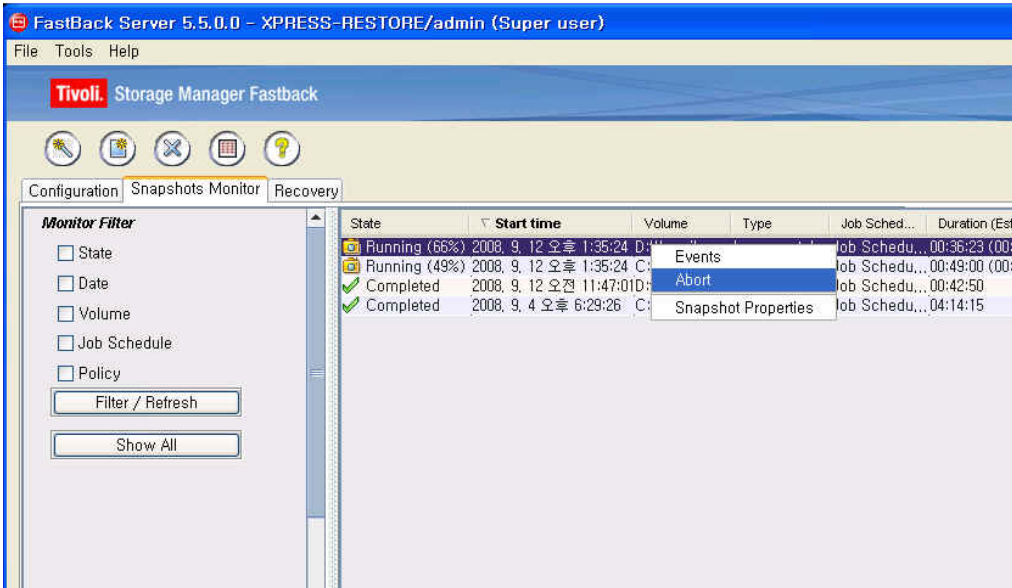
5. Backup Monitoring.

5-1.Backup Monitoring.



계획된 Backup 시간이 되면 Backup이 Start되며 [Snapshots Monitor]탭에서 진행되는 Backup Monitoring을 할 수 있음.

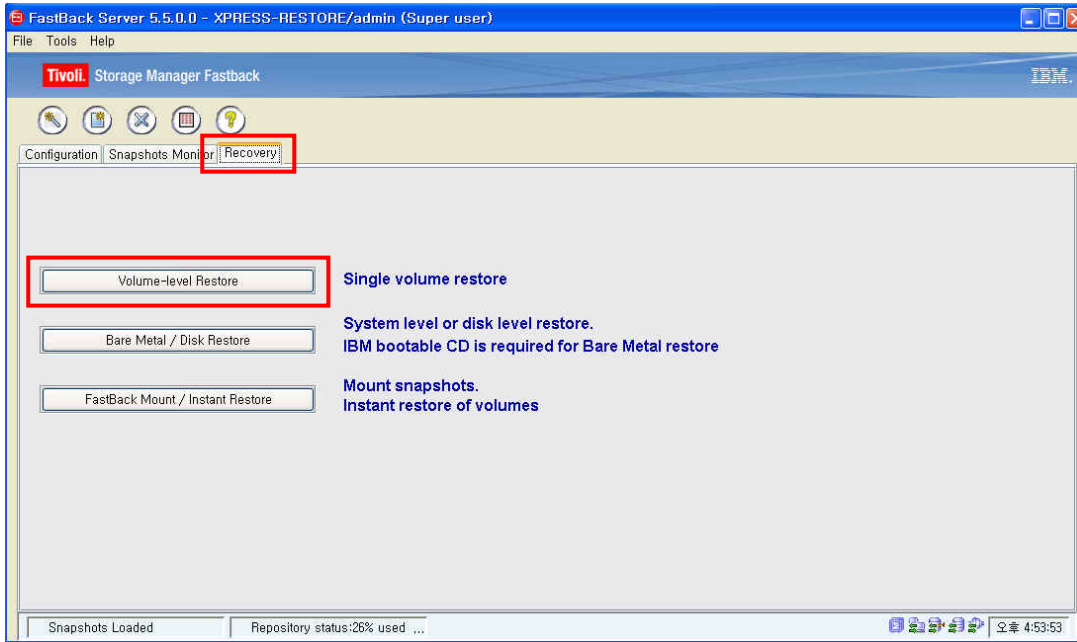
5-2.Backup Abort.



[Snapshots Monitor]탭에서 취소하고자 하는 Backup 우 클릭 후 "Abort" 을 선택하면 진행되고 있는 Backup 을 취소 할 수 있음.

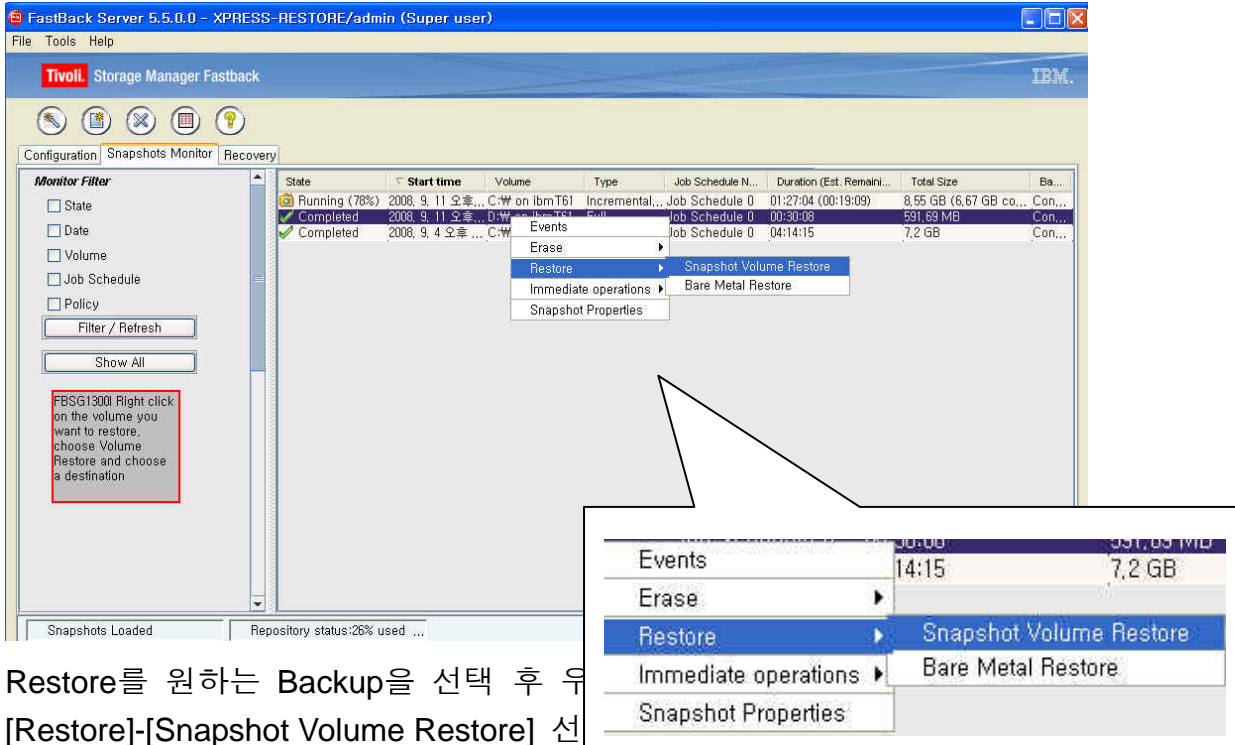
6. Restore.

6-1-1. Volume-level Restore.



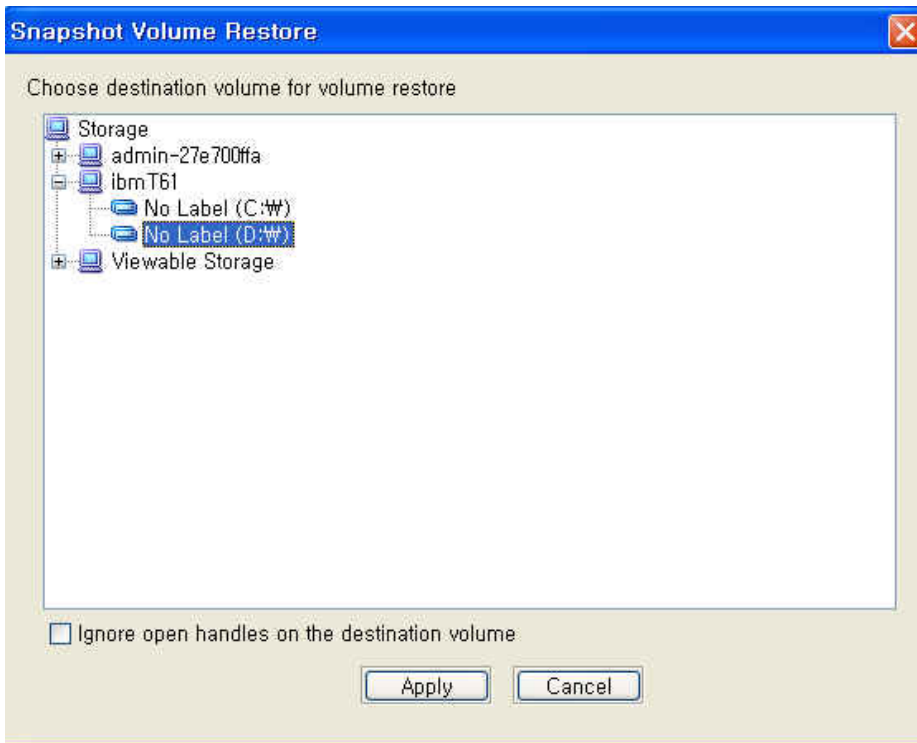
[Recovery] 탭의 [Volume-level Restore] 선택.

6-1-2. Volume-level Restore.



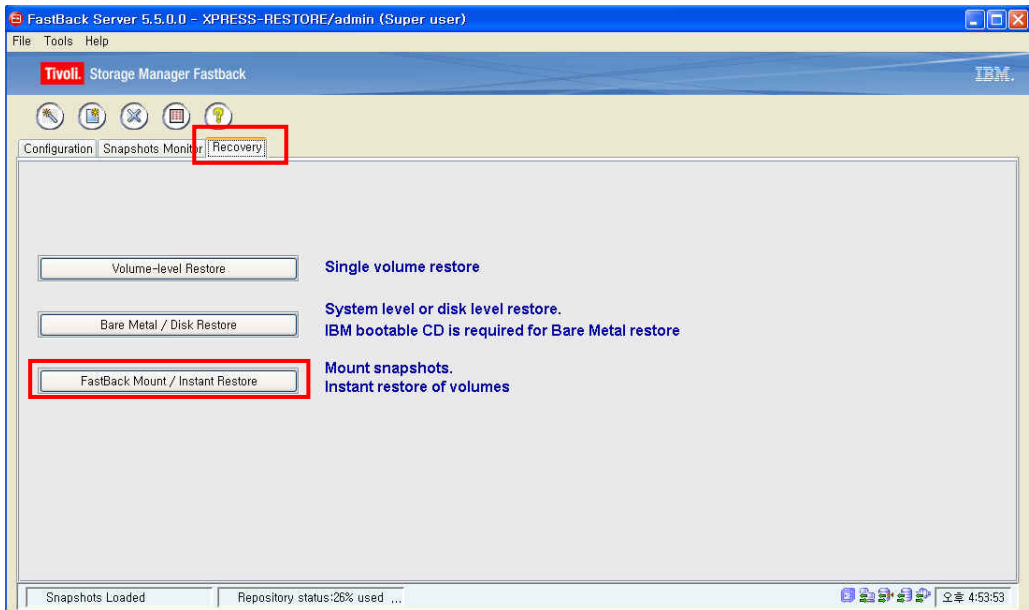
Restore를 원하는 Backup을 선택 후 우
[Restore]-[Snapshot Volume Restore] 선

6-1-3. Volume-level Restore.



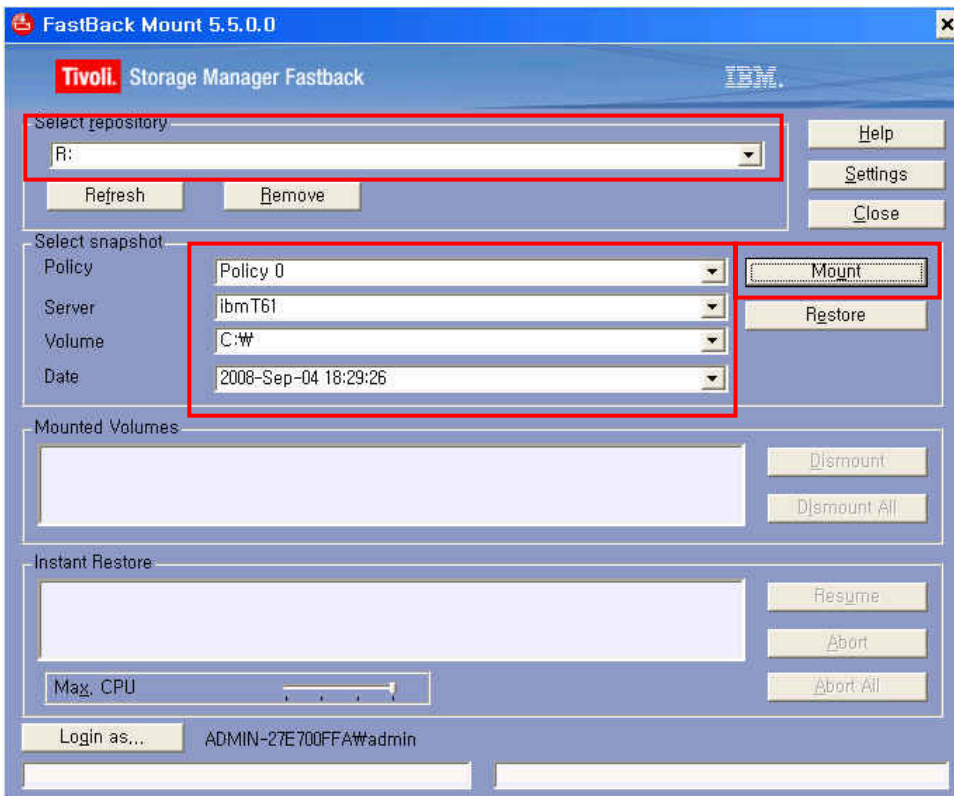
Restore이 진행될 타겟 client의 volume을 선택 후 “Apply”.

6-2-1. FastBack Server에서 FastBack Mount/instant Restore.



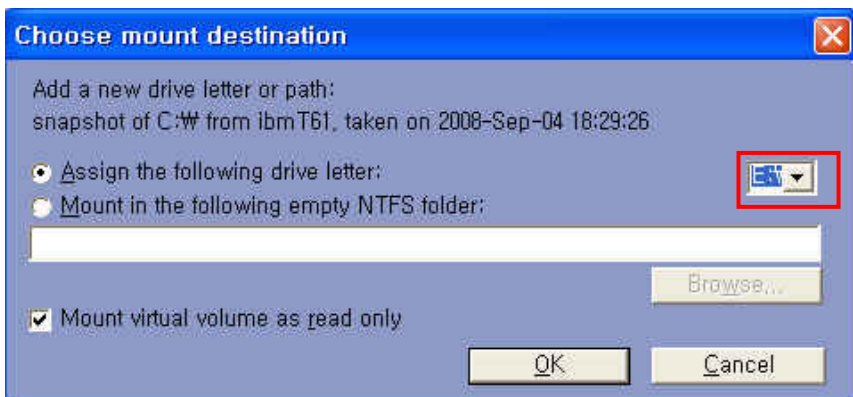
FastBack Server에서 FastBack Manager 의 [Restore]-[FastBack Mount/instant Restore] 선택.

6-2-1. FastBack Server에서 FastBack Mount/instant Restore.



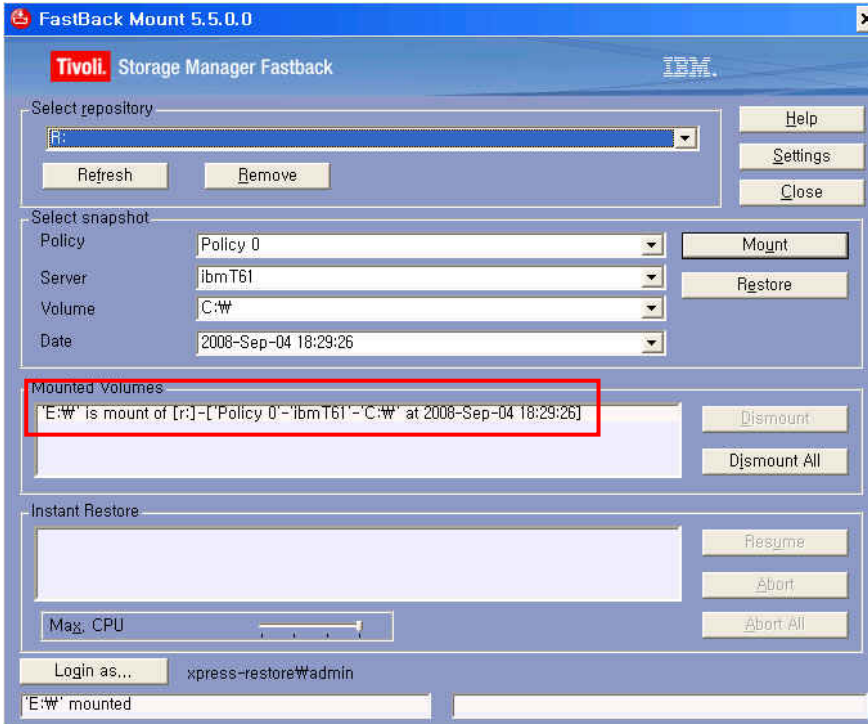
Select repository에 Repository Volume을 확인 후 Mount 하고자 하는 Policy, Server, Volume, Date를 선택 후 “Mount”

6-2-2. FastBack Server에서 FastBack Mount/instant Restore.



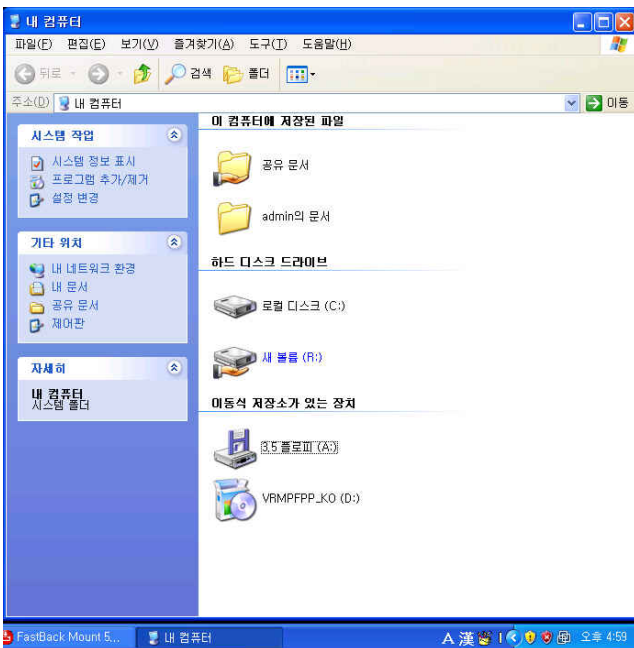
Mount될 drive letter 선택 후 “OK”

6-2-3. FastBack Server에서 FastBack Mount/instant Restore.



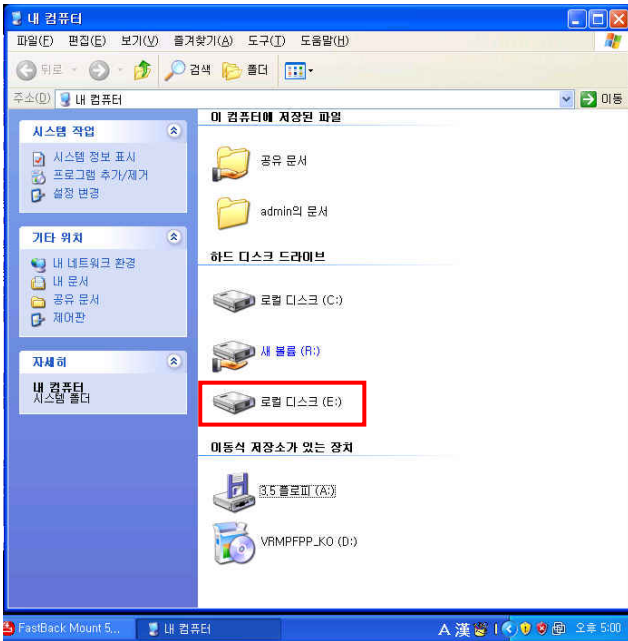
E drive가 Mount된 것을 확인.

6-2-4. FastBack Server에서 FastBack Mount/instant Restore.



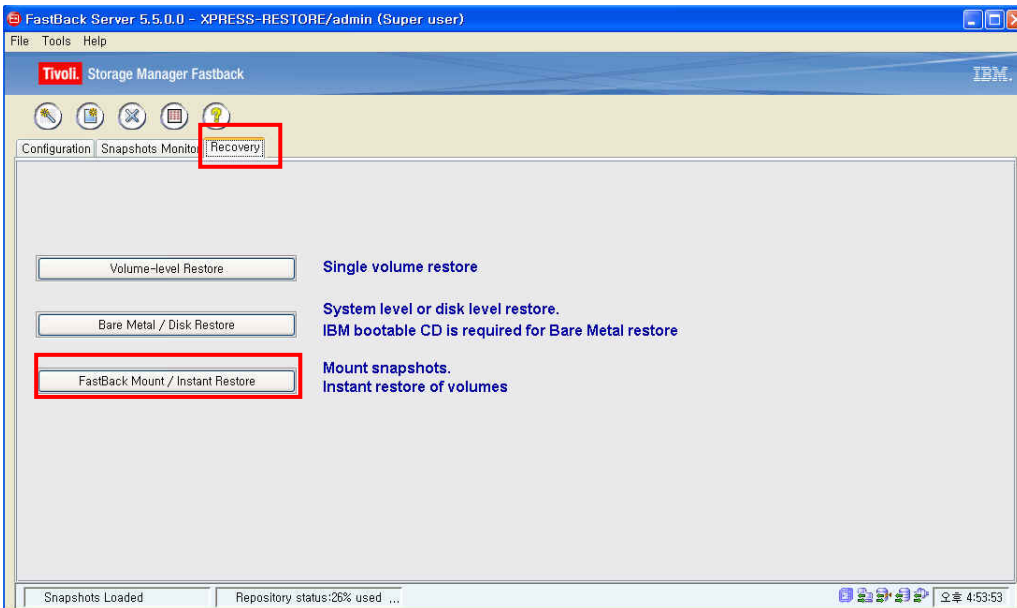
E drive가 Mount 되기 전.

6-2-5. FastBack Server에서 FastBack Mount/instant Restore.



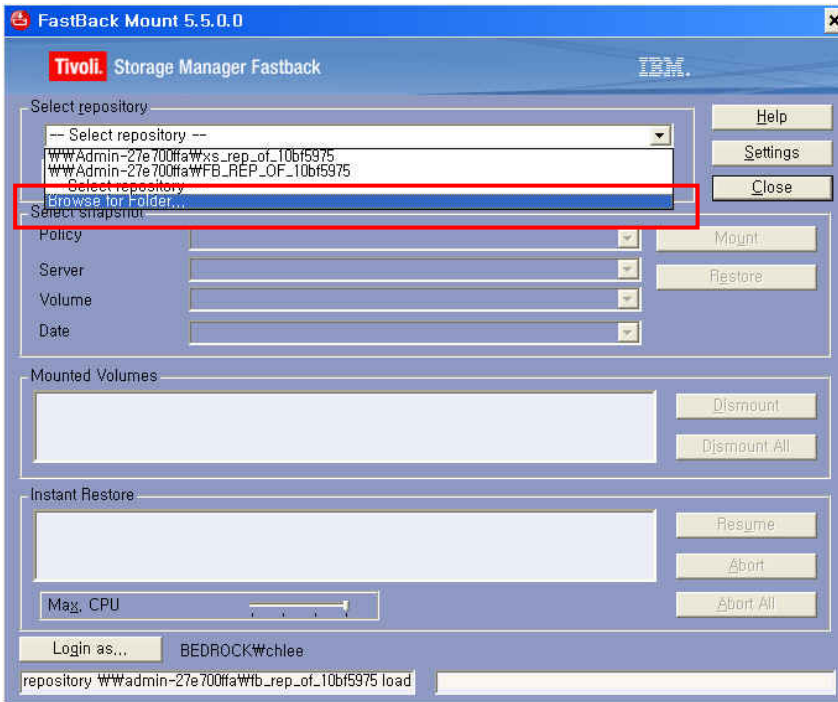
E drive가 Mount 된 후 원하는 파일을 copy & paste 하여 Restore 할 수 있음.

6-3-1. FastBack Client에서 FastBack Mount/instant Restore.



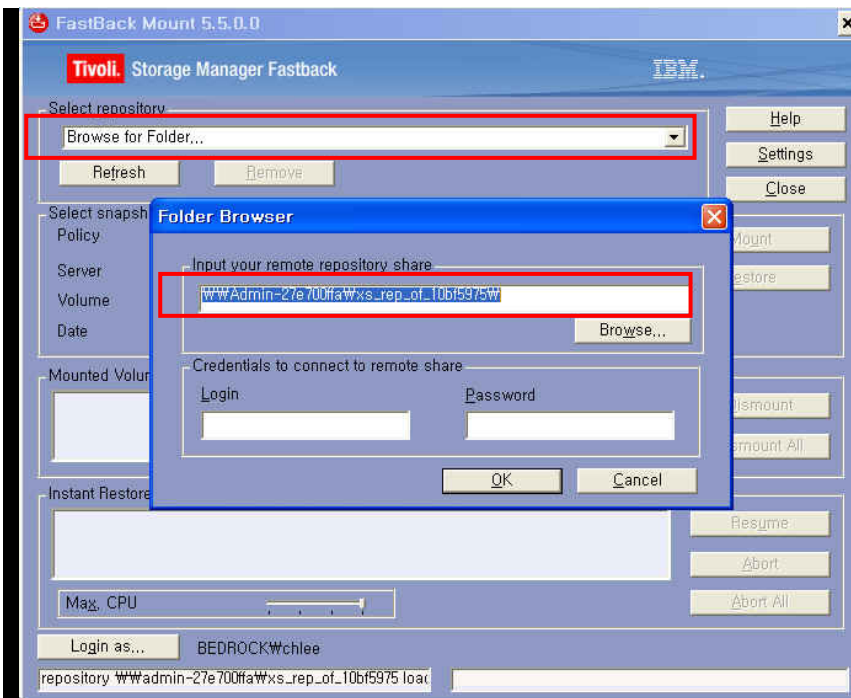
FastBack Client에서 FastBack Manager 의 [Restore]-[FastBack Mount/instant Restore] 선택.

6-3-2. FastBack Client에서 FastBack Mount/instant Restore.



Select repository에서 [Browse for Folder] 선택

6-3-3. FastBack Client에서 FastBack Mount/instant Restore.



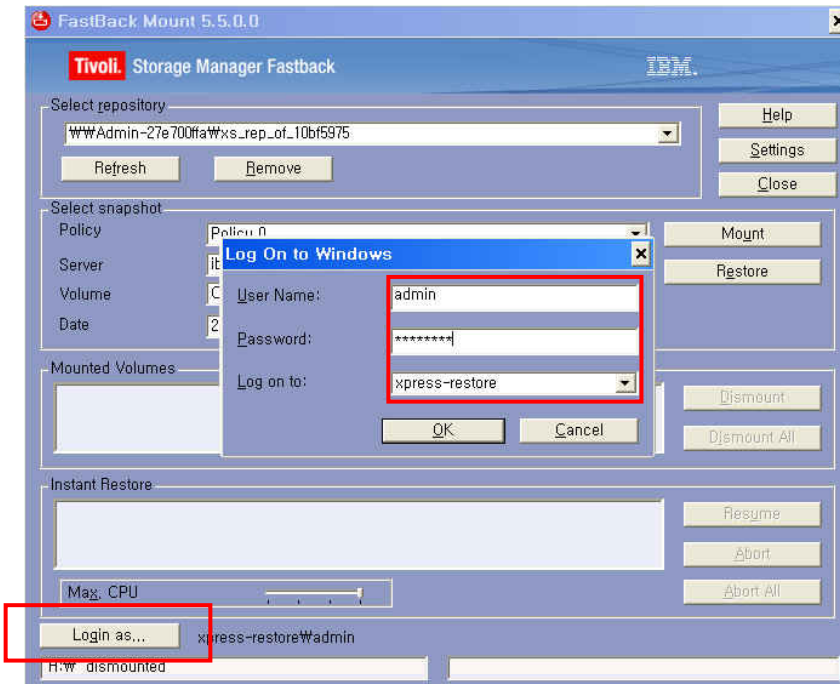
Folder Browser 팝업에서 Input your remote repository share 항목에 공유된 네트워크 상의 Repository 경로를 입력 후 "OK".

6-3-4. FastBack Client에서 FastBack Mount/instant Restore.



팝업 창에서 O/S 계정과 암호 입력 후 “확인”

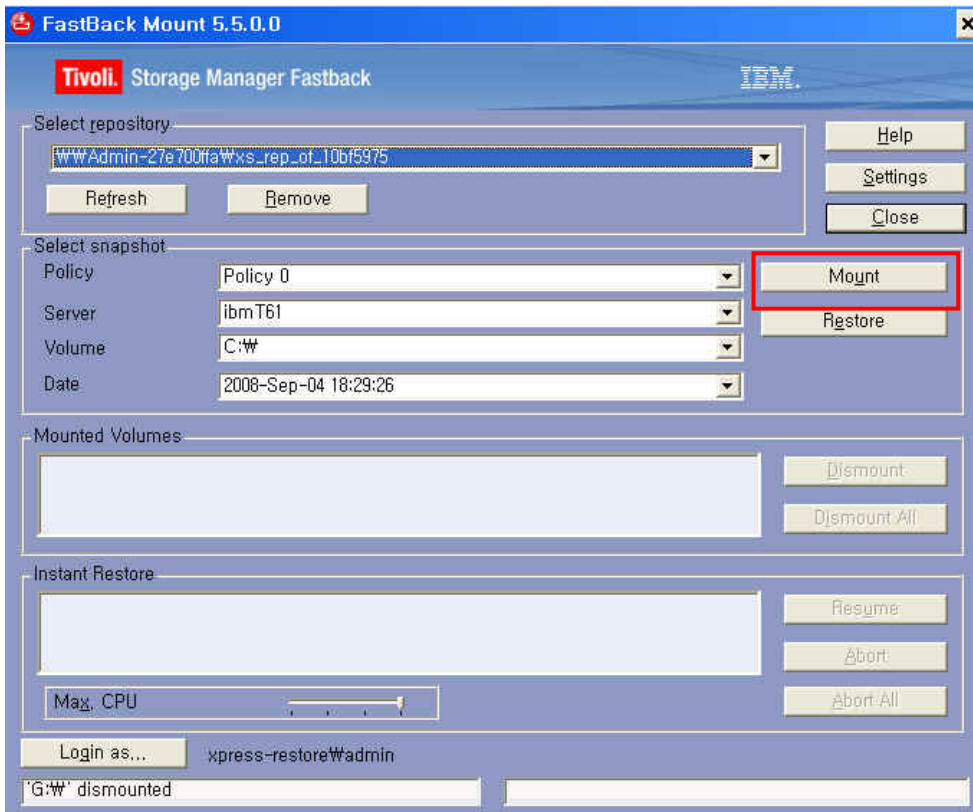
6-3-5. FastBack Client에서 FastBack Mount/instant Restore.



연결이 되지 않으면 “Login as.....” 를 클릭하여

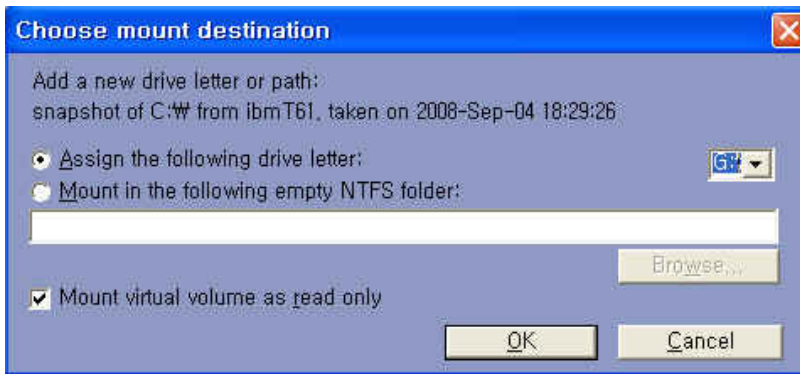
[Log On to Windows] 팝업에서 Fastback 계정(Admin)과 암호(admin123) 및 xpress-restore를 선택 후 “OK”.

6-3-6. FastBack Client에서 FastBack Mount/instant Restore.



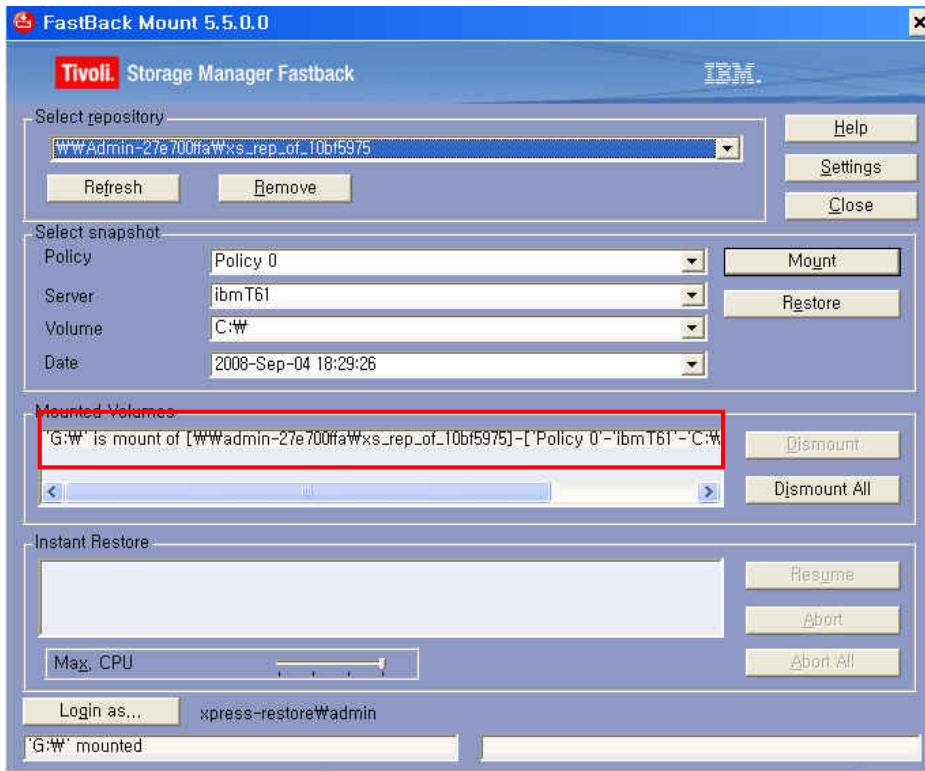
Mount 하고자 하는 Policy, Server, Volume, Date를 선택 후 “Mount”

6-3-6. FastBack Client에서 FastBack Mount/instant Restore.



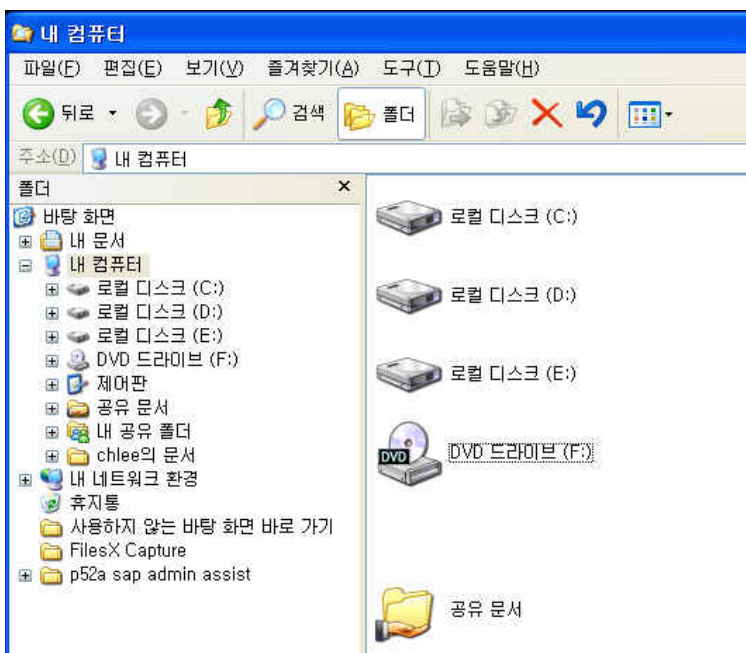
Mount될 drive letter 선택 후 “OK”

6-3-7. FastBack Client에서 FastBack Mount/instant Restore.



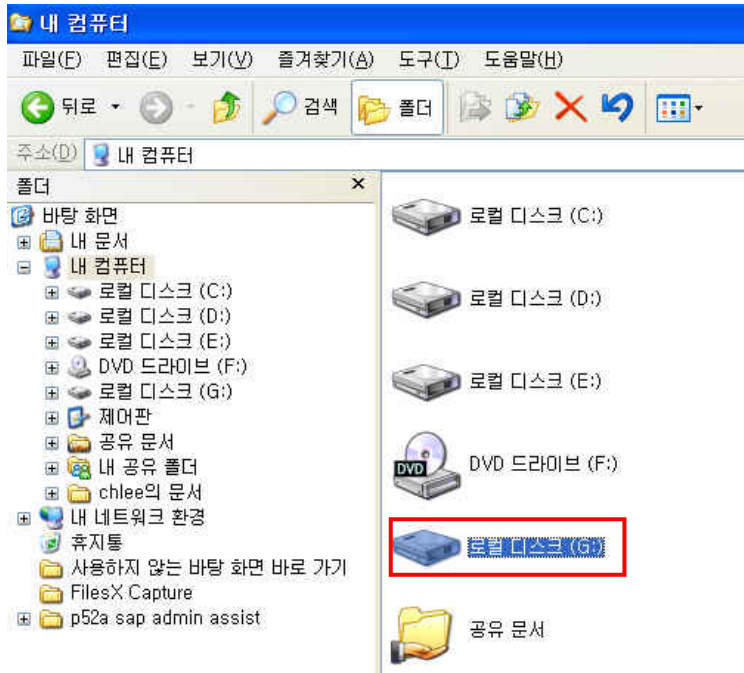
G drive가 Mount된 것을 확인.

6-3-8. FastBack Client에서 FastBack Mount/instant Restore.



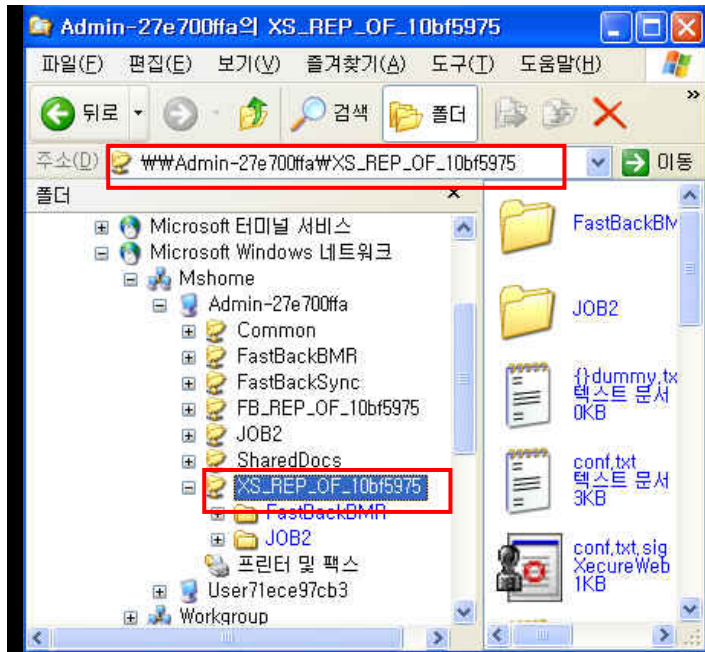
G drive가 Mount 되기 전.

6-3-9. FastBack Client에서 FastBack Mount/instant Restore.



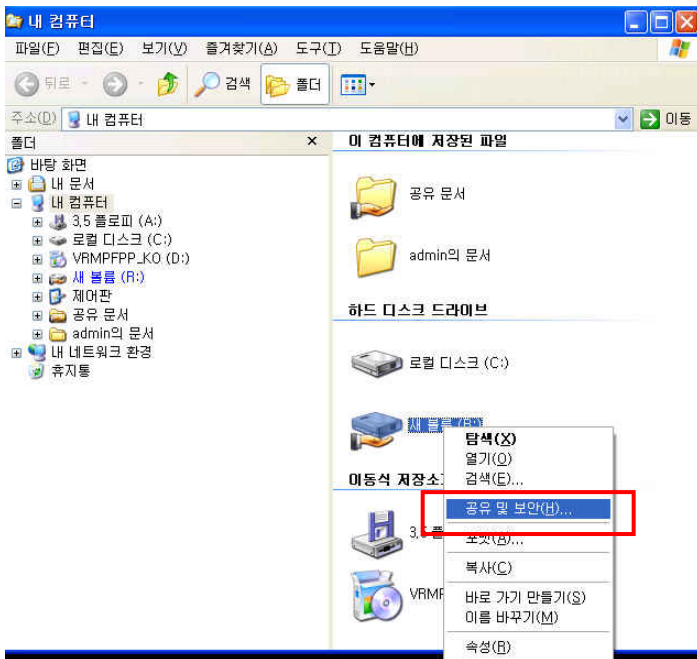
G drive가 Mount 된 후 원하는 파일을 copy & paste 하여 Restore 할 수 있음.

6-4-1. FastBack Client에서 FastBack Mount/instant Restore - Repository 경로 참조(FastBack Client).



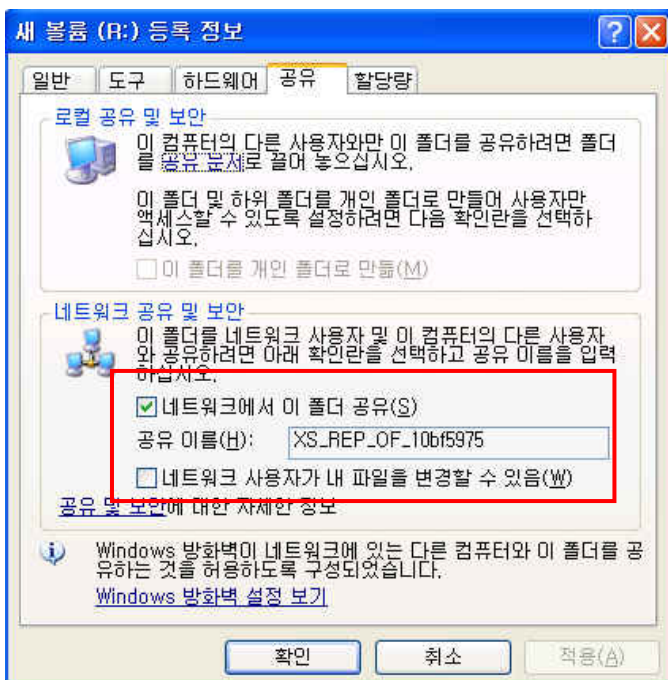
[내 네트워크 환경]-[전체 네트워크]-[Microsoft Windows 네트워크] 아래에서 공유된 네트워크 상의 Repository 경로를 참조하여 Repository 경로를 입력.

6-4-2. FastBack Client에서 FastBack Mount/instant Restore - Repository 경로 참조(FastBack Server).



FastBack Server의 Repository Volume을 우 클릭 후 “공유 및 보안”

6-4-3. FastBack Client에서 FastBack Mount/instant Restore - Repository 경로 참조(FastBack Server).



네트워크 공유 및 보안 항목에서 공유 이름 참조.