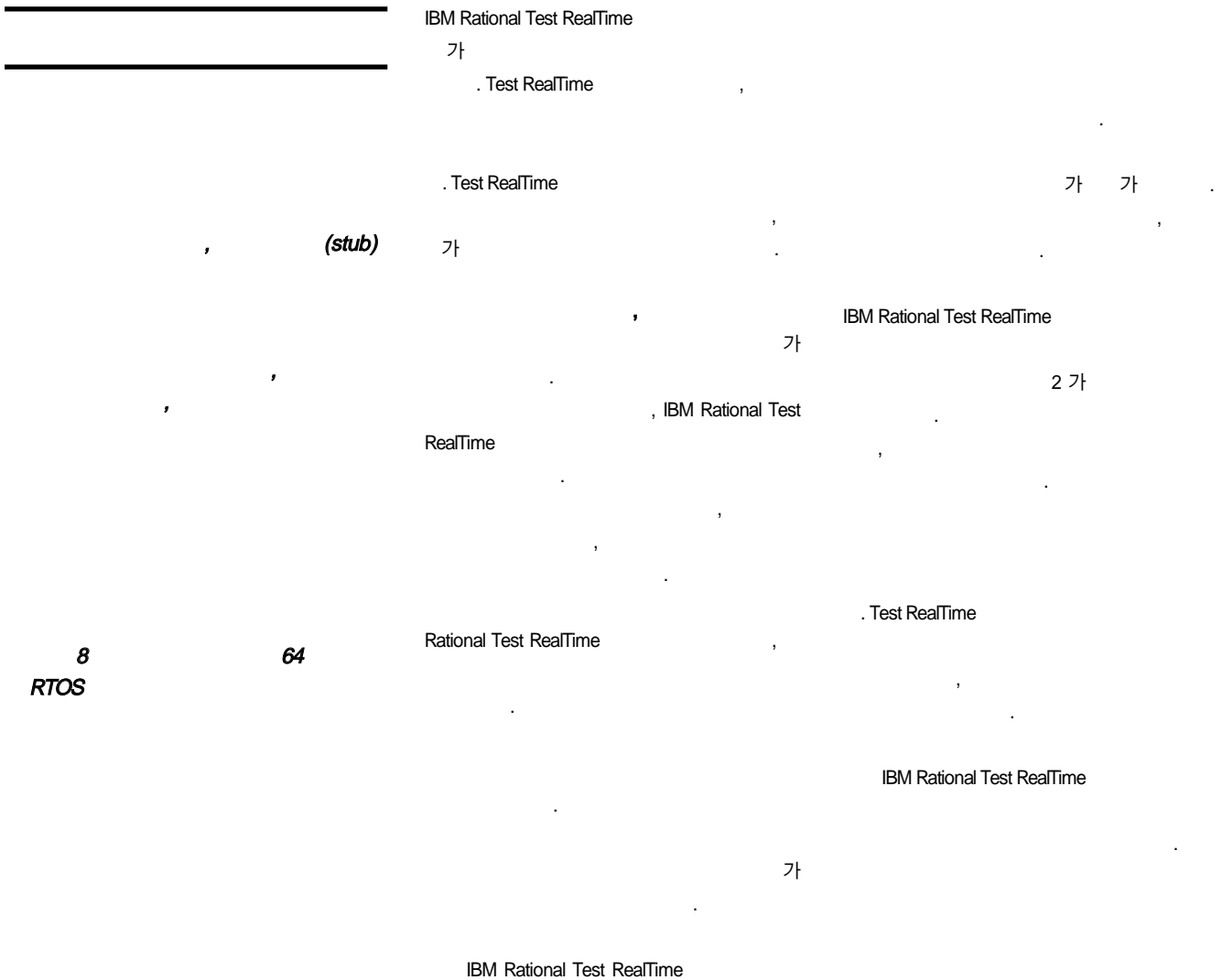


# IBM Rational Test RealTime



(model - driven)

UML(Unified Modeling Language)

가 UML

(Model - Driven Development)

, MDD

IBM Rational Test RealTime

MDD

. IBM

UML

Rose Technical Develo -

per

Rose Technical Developer

(color - coded state - machines)

Windows NT 4.0 SP 6	Intel IA 32
Windows 2000 Pro	Intel IA 32
Windows XP Pro	Intel IA 32
Red Hat Linux 7.2, 7.3, 8.0	Intel IA 32
SuSE Linux 8.1	Intel IA 32
AIX 4.3, 5.1 & 5.2	IBM RS6000
HP - UX 10.20 and 11	HP PA - RISC
Solaris 2.6, 7, 8 & 9	Sun Sparc

IBM Rational Test RealTime

UML

가

C

C++

Java (J2ME/J2SE)

Ada( & )

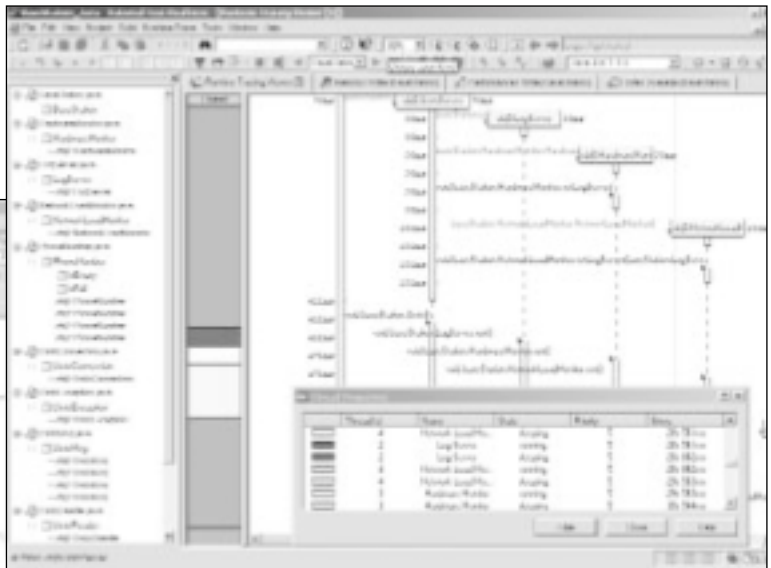
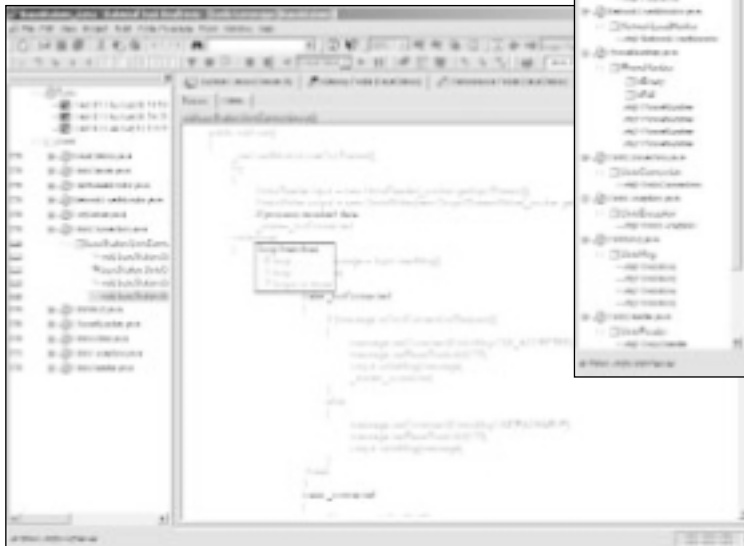
가 , http://www.

rational.com/products/testrt

가 , Test RealTime

가 Embedded Developers

Solution CD /



Rational Test RealTime GUI

( )



Java, C/C++, Ada

가 가  
가

Java, C/C++

(deadlock),  
(race condition)  
가

Java, C/C++, Ada

UML

C C

(target - independent)  
가 가

Java, C/C++, Ada



International Business Machines Corporation 2004

467 - 12

TEL : (02)3781 - 7114  
[www.ibm.com/kr](http://www.ibm.com/kr)

Printed in Korea  
All Rights Reserved

IBM IBM International Business Machines Corporation

Rational, Purify Rational Rose Rational Software Corporation

Microsoft Windows NT Microsoft Corporation

Java Java Sun Microsystems, Inc.

UNIX Open Group

Rational Software [ibm.com/rational](http://ibm.com/rational)

IBM [ibm.com](http://ibm.com)