

Usage and Accounting Manager

- ITUAM Administration Options
 - Chargeback Administration
 - Chargeback Table Maintenance
 - Clients
 - Rate Codes
 - Rate Groups
 - Table Manager
 - Account Code Structure
 - Calendar
 - Processing
 - Process Definitions
 - CPU Normalization
 - Conversion Builder
 - Event Viewer
 - Database Loading
 - Load Tracking
 - Load Archiving & Purging
 - From ITUAM
 - Update Rate Identifiers
 - System Administration
 - ITUAM Data Source Maintenance
 - Database
 - Database Table Manager
 - Database Objects Manager
 - Initialize Database
 - Upgrade Database
 - Execute Stored Procedure
 - Database Profiler

Process Definitions List Maintenance

View

Process Definitions

- IBMTDS
- Mainframe
- MainframeCICS
- MainframeDB2
- MainframeDisk
- MainframeSMF6
- MSExchange
- MSExchangeMbx
- MSIS-Web
- MSReportingServices
- MSSQL2000
- Prorate
- Transactions
- Universal
- UnixDB2
- UnixDB2Storage
- UnixFS
- UnixORA
- UnixORASTorage
- UnixOS

C:\Program Files\IBM\ITUAM\Sample Processes\

Add Remove Edit

Edit Process Definition 'UnixORA'

View

Process Options Account Options Bill Options Process Results Versions

General Files Account Codes Shifts Trace

Account Fields

Field	Identifier	Offset
Field 0	SYSTEM_ID	
Field 1	USERNAME	
Field 2	OR_BASE	
Field 3		

Convert account fields to uppercase during processing

Account Code Conversion

Perform Account Code Conversion

Define Fields

Field	Offset	Length
Field 0		
Field 1		
Field 2		
Field 3		

Move Fields

Field	Offset
Field 0	
Field 1	
Field 2	
Field 3	

Conversion Table: AccTab1.txt

Enable Exception Processing

CIMSServer - ITUAM Administrator

Usage and Accounting Manager

Chargeback Table Maintenance

- Clients
- Rate Codes
- Rate Groups
- Table Manager
- Account Code Structure
- Calendar

Rate Code List Maintenance

Rate Table: All

Rate Table	Rate Group	Rate Code
STANDARD	MS Windows DB2 Charges	LLX105
STANDARD	MS Windows DB2 Charges	LLX106
STANDARD	MS Windows DB2 Charges	LLX107
STANDARD	MS Windows DB2 Charges	LLX108
STANDARD	MS Windows DB2 Charges	LLX109
STANDARD	MS Windows DB2 Charges	LLX110
STANDARD	MS Windows DB2 Charges	LLX111
STANDARD	MS Windows DB2 Charges	LLX112
STANDARD	MS Windows DB2 Charges	LLX113
STANDARD	MS Windows DB2 Charges	LLX114
STANDARD	MS Windows DB2 Charges	LLX115
STANDARD	MS Windows DB2 Charges	LLX116
STANDARD	MS Windows DB2 Charges	LLX117
STANDARD	MS Windows DB2 Charges	LLX118
STANDARD	MS Windows DB2 Charges	LLX119
STANDARD	MS Windows DB2 Charges	LLX120
STANDARD	MS Windows DB2 Charges	LLX121
STANDARD	MS Windows DB2 Charges	LLX122

Rate Code Entries: 363

Add Rate Remove Rate Edit Rate Edit Rate Shifts Remove Rate Shifts

Rate Code Maintenance

[STANDARD / LLX119]

[General]

Description: MS Windows DB2 SCPU (Minutes)

Value: 2.5 Rate Index: .588

Rate Group: MS Windows DB2 Add rate group ...

[Detail]

Use 4 decimals for rate Resource Conversion: Default

Rate is per thousand Conversion Factor:

Do not adjust for zero cost Resource Decimals: 2

Flat fee money charges Report Flag 1: 1

CPU Value Report Flag 2:

Currency Symbol:

Detail Description: MS Windows DB2 SCPU (Minutes)

Comments:

Edit Rate Shifts

Rate Shift Maintenance

[STANDARD / LLX119]

Shift #	Rate Value	Description
Shift #2	0	
Shift #3	0	
Shift #4	0	
Shift #5	0	
Shift #6	0	
Shift #7	0	
Shift #8	0	
Shift #9	0	

Keyboard Usage: Press the Enter key to edit a cell. Use the arrow keys to navigate between cells.

OK Cancel

Edit Process Definition 'MainframeCICS'

View

- Process Options
- Account Options
- Bill Options
- Process Results
- Versions

- General
- Processing
- Database

Processing:

- Run CIMSACCT
- Run CIMSBILL
- Remove output files before processing
- Archive process files

Database Loading:

- Load Ident records
- Load Summary records
- Load CIMSBILL Detail records
- Load CIMSACCT Detail records
(Note: Should be used only after consultation with IBM)
- Use bulk load interface

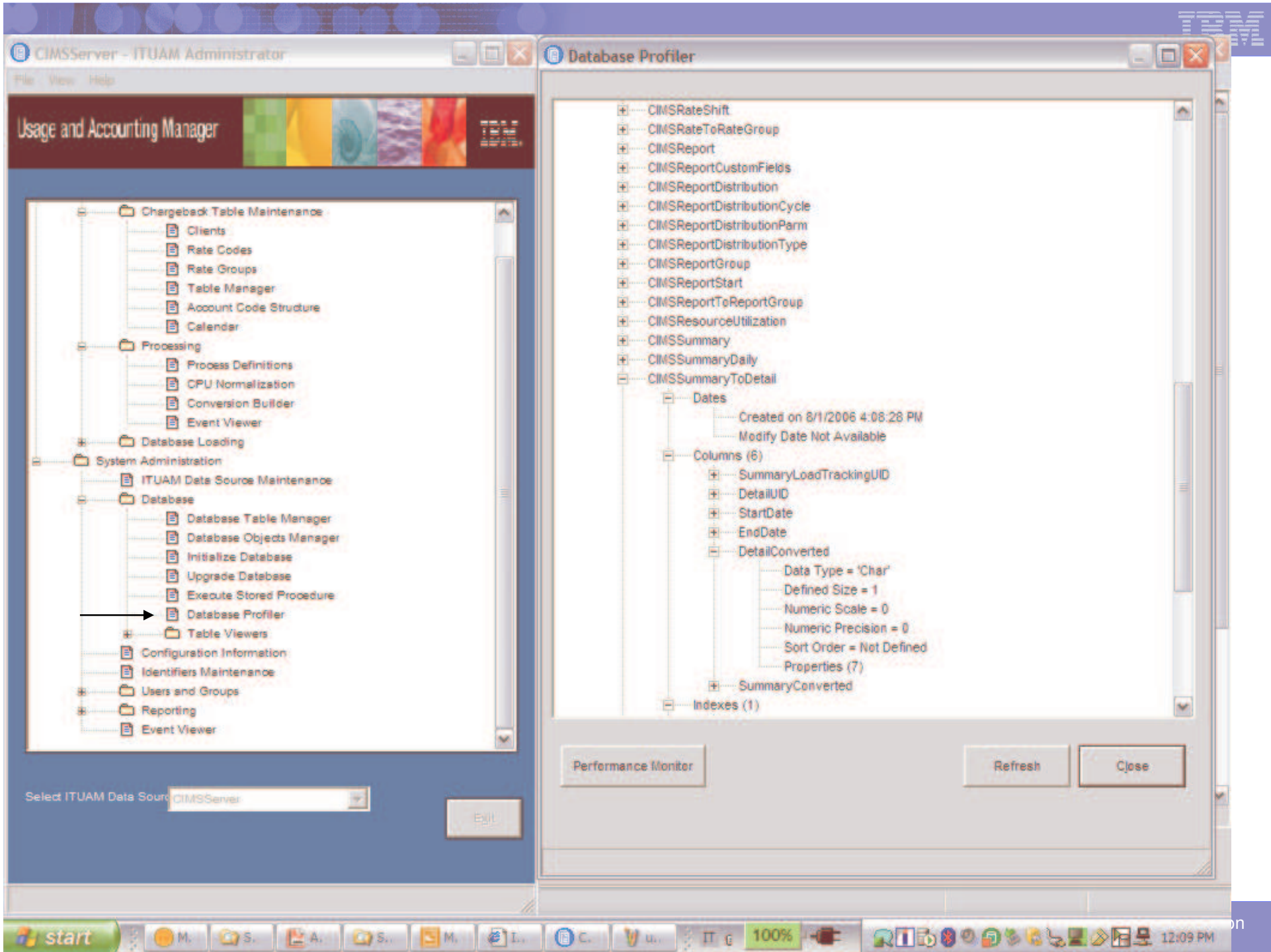
Process

OK

Cancel

Apply

Design New Slide



Usage and Accounting Manager

- ITUAM Administration Options
 - Chargeback Administration
 - Chargeback Table Maintenance
 - Clients
 - Rate Codes
 - Rate Groups
 - Table Manager
 - Account Code Structure
 - Calendar
 - Processing
 - Process Definitions
 - CPU Normalization
 - Conversion Builder
 - Event Viewer
 - Database Loading
 - System Administration

Select ITUAM Data Source:

Process Definitions List Maintenance

View

Process Definitions
BMC_KM_Patrol_Unix_Server

C:\Processes_CIMS_ENEL

Add Remove

Edit Process Definition 'BMC_KM_Patrol_Unix_Server': Process BMC Patrol Unix S

View

Process Options | Account Options | Bill Options | Process Results | Versions

Account | Bill | Event Viewer

View Message File

View Results File

View Detail File

View Ident File

View Exception File

View CSR Plus File

Currently viewing: Account Results File from 8/4/2006 at 04:32 PM

```
VERIFY DATA OFF
UPPERCASE ACCOUNT FIELDS
EXCEPTION FILE PROCESSING ON
TEST Y
ACCOUNT CODE CONVERSION
ACCOUNT FIELD0,HOSTNAME,1,8
DEFINE FIELD0,1,8

V5.1
```

IBM Tivoli Usage and

Compile Date: 2006/02/24
Compile Time: 150102

```
ITUAM CSR Records.....Read
Total Records.....Read
ITUAM Records.....Written

Normal End Of Job For ITUAM CIMSACCT ...
```

29 lines

Use External Viewer Word Wrap

ITUAM JobRunner

Job Runner può eseguire l'intero processo di elaborazione ITUAM

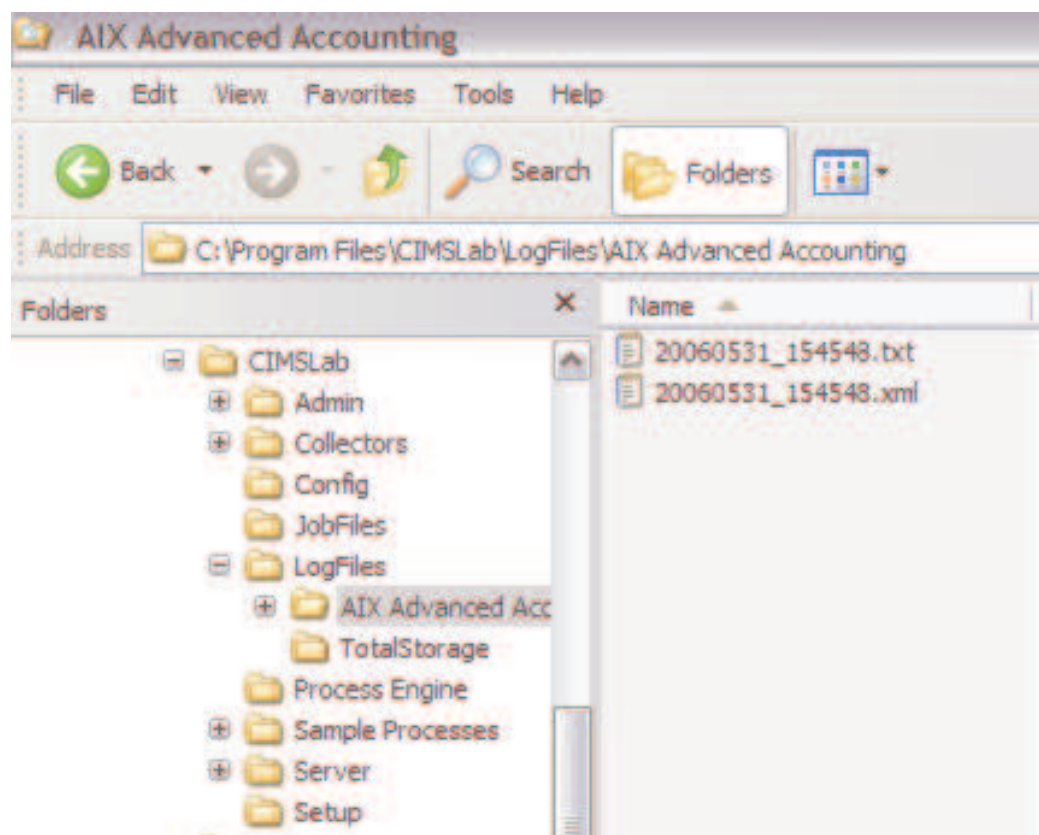
E' eseguibile da:

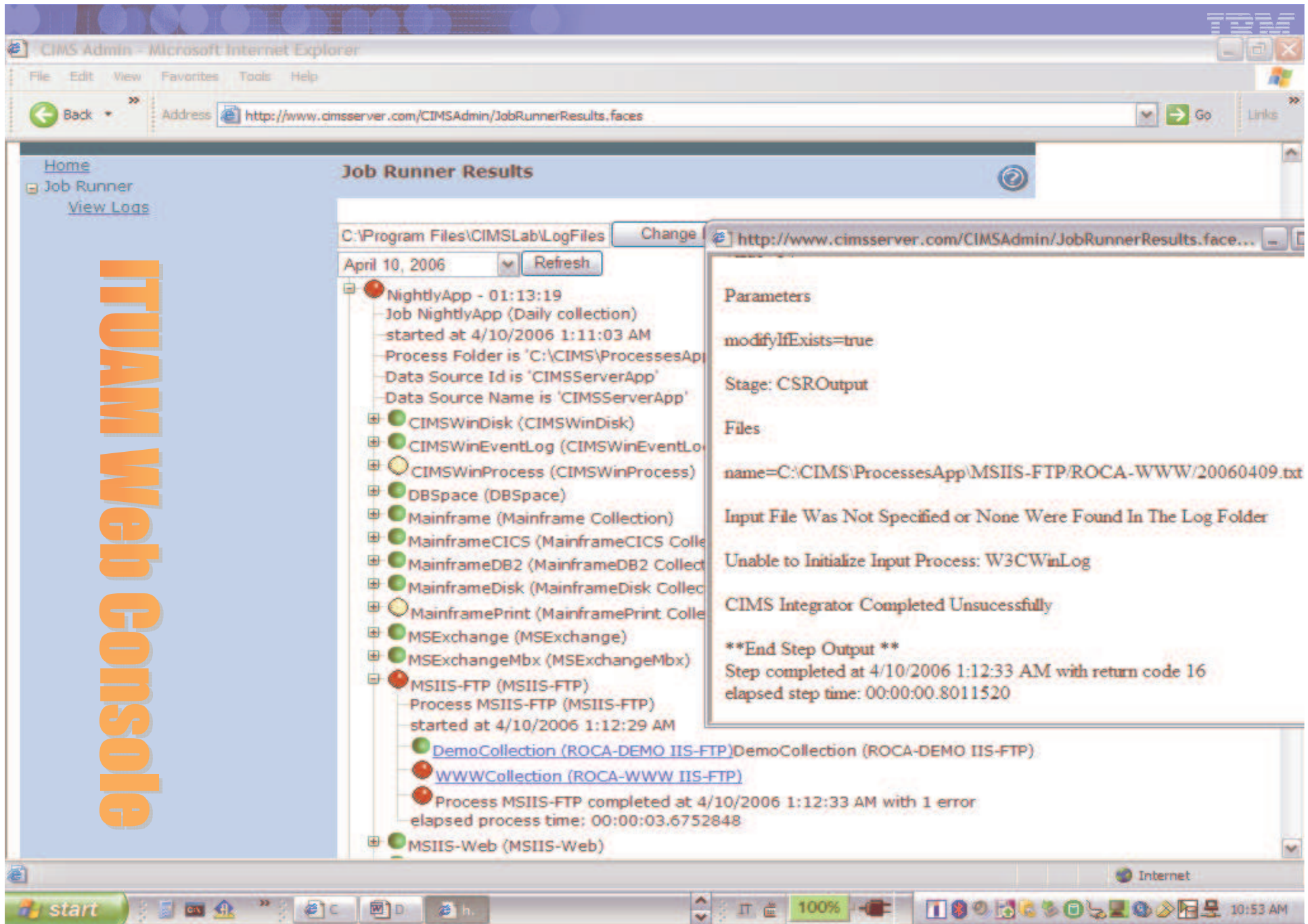
- **Command prompt**
- **Windows Task Scheduler**
- **Tivoli Workload Scheduler**

- Windows-based only
- Define Collector implementation
- Define Process implementation
- XML structure
 - Different Samples provided
 - Notepad editor
 - Easily viewed with browser
- Fully documented in Manual

```
<Jobs ...>
  <Job ...>
    <Process ...>
      <Defaults .../>
      <Steps ...>
        <Step ...>
          <Parameters>
            <Parameter .../>
          </Parameters>
        </Step>
      </Steps>
    </Process>
  </Job>
</Jobs>
```

L' Output di un processo ITUAM è simile a un JOBout





ITUAM Web Console

ITUAM Server Web Reporting

ITUAM Server
Web Reporting

Crystal
Report

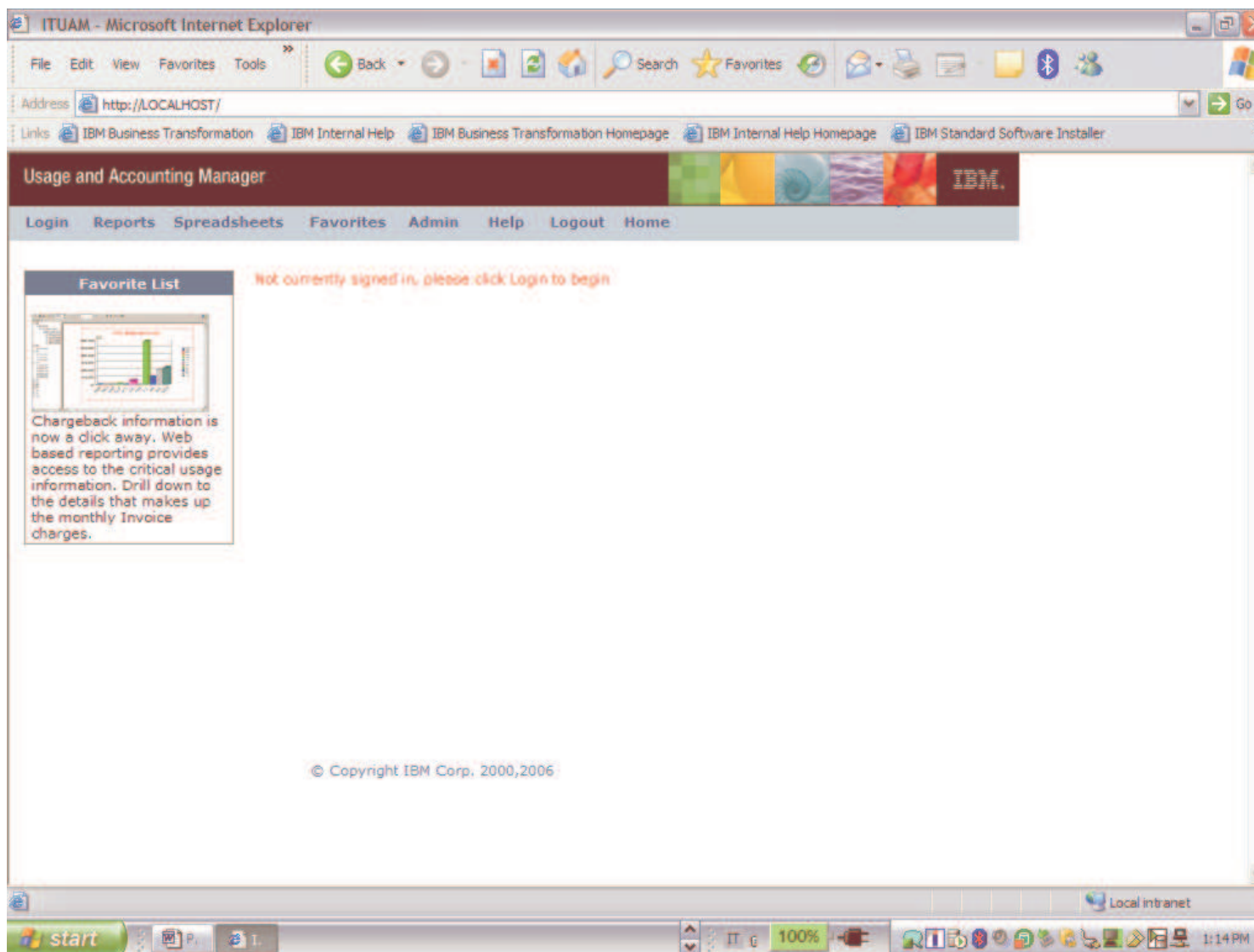


Informazioni di Cost Accounting sono ora a portata di un 'click'. Il Web reporting fornisce facilmente accesso alle informazioni critiche sull'utilizzo delle risorse.

E' possibile andare in 'Drill down' fino ai minimi dettagli delle voci che compongono una fatturazione

ITUAM Server
Web Reporting

SQL Server
Reporting
Services





Reports

Invoices

- Invoice by Account Level
- Application Cost
- Account Total Invoice
- Alternate Invoice
- Invoice with Budget
- Invoice with Shifts
- Run Total Invoice with Shifts
- Run Total Invoice
- Run Total Percent
- Run Total Rate Group Percent
- Zero Cost Center Invoice
- Invoice by Account Level V2

Account Reports

- Account Budget for Period YTD
- Account Summary YTD
- Account Summary by Week
- Account Summary YTD - Wide
- Account Summary by Week - Wide
- Account Summary Daily
- Account Summary Daily 2
- Summary Crosstab - Charges
- Summary Crosstab 2 - Charges
- Summary Crosstab - Usage
- Summary Crosstab 2 - Usage
- Daily Crosstab - Charges
- Daily Crosstab - Usage
- Weekly Crosstab - Charges
- Weekly Crosstab - Usage

Monthly Crosstab - Charges

Monthly Crosstab - Usage

Top Usage Reports

- Top 10 Cost
- Top 10 Bar Graph
- Top 10 Pie Chart
- Top 10 By Rate Code

Variance Reports

- Cost Variance
- Cost Variance Drilldown
- Resource Variance

Trend

- Cost Trend
- Resource Usage Trend
- Cost Trend Graph
- Cost Trend Graph 2
- Usage Trend Graph
- Cost Trend by Rate

Resource Detail

- Detail By Multiple Identifiers
- Detail By Multiple Identifiers with Acct
- Detail by Rate Group
- Detail by Rate Group/Identifier
- Batch Report
- CICS Transaction ID Report
- DB2 Summary
- Exchange 2000
- SQL Server 2000

Windows Disk

Audit

- Client Audit Report
- Rate Audit Report
- Transaction Audit Report

Other

- Job Cost
- Percentage
- Transaction Report
- Line Item Budget
- Zero Cost Factor
- Rate
- Client
- Configuration

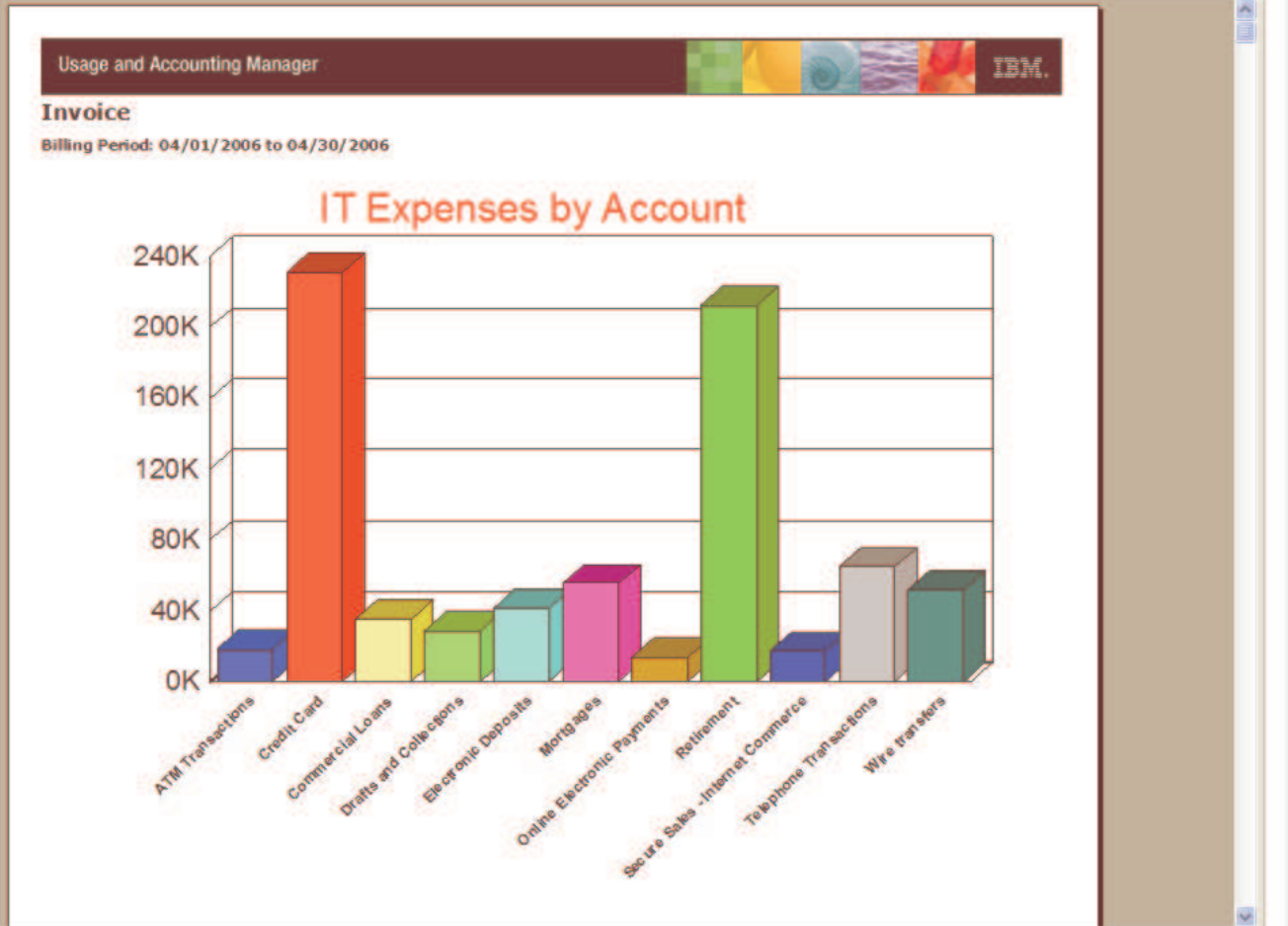
Custom

- HBereport
- Storage Usage
- CIO Usage
- test


Expand All

Collapse All

- ATM Transactions
 - Equipment/Shared Services
 - Unix Process Charges
 - Unix Filesystem
 - Unix Oracle Charges
 - MS Windows Storage Charges
 - MS Windows SQL Server
 - MS IIS
 - MS Exchange Sent and Receive
 - MS Windows Processes
 - MS Windows Print
 - Mainframe Printer/Reader Chan
 - Mainframe Storage Charges
 - Mainframe Print Charges
 - Mainframe CICS Charges
 - Mainframe DB2 Charges
- Credit Card
 - Equipment/Shared Services
 - Unix DB2 Charges
 - Unix Process Charges
 - Unix Filesystem
 - Unix Oracle Charges
 - MS Windows Storage Charges
 - MS Windows SQL Server
 - MS IIS
 - MS Exchange Mailbox
 - MS Windows Processes
 - Mainframe Batch Charges
 - Mainframe TSO Charges
 - Mainframe Input/Output Charge
 - Mainframe Printer/Reader Chan
 - Mainframe Storage Charges
 - Mainframe Print Charges
 - Mainframe CICS Charges
 - Mainframe DB2 Charges
- Commercial Loans
- Drafts and Collections
- Electronic Deposits
- Mortgages
- Online Electronic Payments
- Retirement
- Secure Sales - Internet Commerce
- Telephone Transactions



Usage and Accounting Manager



Application View

Application	Charges
ATM - ATM Transactions	18,851.48
CCX - Credit Card	230,738.81
COM - Commercial Loans	35,078.06
DAC - Drafts and Collections	29,164.41
DEP - Electronic Deposits	41,420.42
MTG - Mortgages	55,540.65
ONE - Online Electronic Payments	13,637.11
RTM - Retirement	212,260.46
SSI - Secure Sales - Internet Commerce	17,449.11
TEL - Telephone Transactions	64,925.96
WTX - Wire transfers	51,639.48
Total	770,706.13

Application View

Application	Charges
Resource Group	
COM - Commercial Loans	
COM Database	8,306.59
COM Email	2,318.80
COM Equipment	399.00
COM Print	0.30
COM Servers	1,534.31
COM Storage	22,185.45
COM Web	333.61
COM - Commercial Loans	35,078.06

Application View

Resource Group	Platform	Charges
COM Database		
COM Database	Mainframe	3,639.90
COM Database	Unix	1,395.66
COM Database	Windows	3,271.03
COM Database		8,306.59

ITUAM - Microsoft Internet Explorer

File Edit View Favorites Tools Help

Back Forward Home Search Favorites Media Messenger Bookmarks My Yahoo! Yahoo! Finance Mail News Shopping

Address: http://www.cimserver.com/ActiveXViewer.asp?AccountLength1=4&AccountLength2=20&AccountLength3=36&AccountLength4=56&AccountLength5=0&AccountName1=Application&AccountName2=Resource+Grou

Application Cost Publish

100% 1 of 1

Preview COM COM Database

- COM Database
 - COM Database Mainframe
 - COM Database Unix
 - COM Database Windows

Usage and Accounting Manager

Application View

Resource Group	Platform	Charges
COM Database		
COM Database	Mainframe	3,639.90
COM Database	Unix	1,395.66
COM Database	Windows	3,271.03
COM Database		8,306.59

COM Database	Unix	
+	COM Database	Unix eddie
+	COM Database	Unix eddie EDDIE10
+	COM Database	Unix eddie EDDIE920
+	COM Database	Unix garfield
+	COM Database	Unix roxie

Usage and Accounting Manager

Application View

Platform			Charges
Server			
COM Database	Unix		
COM Database	Unix	eddie	0.00
COM Database	Unix	eddie	554.96
COM Database	Unix	eddie	840.70
COM Database	Unix	garfield	0.00
COM Database	Unix	roxie	0.00
COM Database Unix			1,395.66

Application View

Server	Rate Group	Charges
COM Database	Unix eddie EDDIE9:	
Unix Oracle Charges		840.70
COM Database	Unix eddie EDDIE9:	840.70

Application View

Rate Group	Rate	Units	Charges
COM Database	Unix eddie EDDIE9:		
Unix Oracle Charges			
Unix Oracle		23	0.04
Unix Oracle Session CPU (Minutes)		411.36	40.81
Unix Oracle Connect (Hours)		3,562.49	160.31
Unix Oracle UGA Memory (MB Days)		9,266.99	0.00
Unix Oracle PGA Memory (MB Days)		86,747.06	0.19
Unix Oracle Rec CPU (Minutes)		0.02	0.02
Unix Oracle User Commits		1	0.00
Unix Oracle Physical Reads		273,677	41.04
Unix Oracle Physical Writes		52,944	18.51
Unix Oracle DB Block Gets		8,321,411	416.05
Unix Oracle Messages Sent		327,441	147.36
Unix Oracle Messages Received		327,707	16.37
Unix Oracle Charges			840.70

ITUAM - Microsoft Internet Explorer

File Edit View Favorites Tools Help

Back Forward Home Search Favorites Media Messenger Bookmarks My Yahoo! Yahoo! Finance Mail News Shopping

Address: http://www.cimserver.com/ActiveXViewer.asp?AccountLength1=4&AccountLength2=20&AccountLength3=36&AccountLength4=56&AccountLength5=0&AccountName1=Application&AccountName2=Resource+Grou

Application Cost Publish

100% 1 of 1

Preview COM COM Database

- COM Database
 - COM Database Mainframe
 - COM Database Unix
 - COM Database Windows

Usage and Accounting Manager

Application View

Resource Group	Platform	Charges
COM Database		
COM Database	Mainframe	3,639.90
COM Database	Unix	1,395.66
COM Database	Windows	3,271.03
COM Database		8,306.59

- Windows CIMSLAB-C
- Windows ROCA-DEMO
- Windows ROCA-SRV1
- Windows ROCA-SRV1 Common
- Windows ROCA-SRV1 Users
- Windows ROCA-WWW
- Windows WWWFTP

Usage and Accounting Manager

Application View

Platform			Charges
Server			
COM Database	Windows		
COM Database	Windows	CIMSL	1.85
COM Database	Windows	ROCA	70.24
COM Database	Windows	ROCA	1.70
COM Database	Windows	ROCA	1,273.13
COM Database	Windows	ROCA	1,429.70
COM Database	Windows	ROCA	3.44
COM Database	Windows	WWW	490.97
			3,271.03

Server	Rate Group	Charges
COM Database	Windows	ROCA-DEMO
MS Windows SQL Server		70.24
		70.24

COM Database	Windows	ROCA-DEMO
MS Windows SQL Server		
MS Windows SQL Server Records	11,471	0.00
MS Windows SQL Server Duration (Seconds)	2,121,773.49	21.18
MS Windows SQL Server CPU (Seconds)	177.76	24.57
MS Windows SQL Server Reads	2,646,239	24.49
MS Windows SQL Server Writes	761	0.00
MS Windows SQL Server		70.24

ITUAM - Microsoft Internet Explorer

File Edit View Favorites Tools Help

Back Forward Home Search Favorites Media Messenger Bookmarks My Yahoo! Yahoo! Finance Mail News Shopping

Address: http://www.cimserver.com/ActiveXViewer.asp?AccountLength1=4&AccountLength2=20&AccountLength3=36&AccountLength4=56&AccountLength5=0&AccountName1=Application&AccountName2=Resource+Grou

Application Cost Publish

100% 1 of 1

Preview COM COM Database

- COM Database
 - COM Database Mainframe
 - COM Database Unix
 - COM Database Windows

Usage and Accounting Manager

Application View

Resource Group	Platform	Charges
COM Database	Mainframe	3,639.90
COM Database	Unix	1,395.66
COM Database	Windows	3,271.03
COM Database		8,306.59

COM Database	Mainframe	SIE
COM Database	Mainframe	SIE
Mainframe DB2 Charges		
DB2 Transactions (Records)		
DB2 Transaction CPU Minutes		
DB2 Accumulated CPU Minute		
DB2 Transaction Elapsed Min.		
DB2 Accumulated Elapsed Mir		
DB2 Entry/Exit Events		
DB2 I/O Activity (Get Pages)		

DB2 Accumulated CPU Minutes		
DB2 Transaction Elapsed Minutes		
DB2 Accumulated Elapsed Minutes		
DB2 Entry/Exit Events		
DB2 I/O Activity (Get Pages)		

DB2 Accumulated Elapsed Minutes		
DB2 Entry/Exit Events		
DB2 I/O Activity (Get Pages)		

Usage and Accounting Manager

Application View

Platform	Server	Charges
COM Database	Mainframe	
COM Database	Mainframe	SIE
		3,639.90
COM Database	Mainframe	
		3,639.90

Application View

Server	Rate Group	Charges
COM Database	Mainframe	SIE
	Mainframe DB2 Charges	3,639.90
COM Database	Mainframe	SIE
		3,639.90

Application View

Rate Group	Rate	Units	Charges
COM Database	Mainframe	SIE	
Mainframe DB2 Charges			
	DB2 Transactions (Records)	3,300	49.50
	DB2 Transaction CPU Minutes	263.23	1,316.10
	DB2 Accumulated CPU Minutes	260.82	1,304.10
	DB2 Transaction Elapsed Minutes	8,392.42	126.00
	DB2 Accumulated Elapsed Minutes	3,351.46	502.80
	DB2 Entry/Exit Events	6,427,260	64.20
	DB2 I/O Activity (Get Pages)	277,205,640	277.20
	Mainframe DB2 Charges		3,639.90

Usage and Accounting Manager

Run Total Rate Group Percent

Mainframe Storage Charges

Account	Charge	%
COM - Commercial Loans	22,006.32	43.04%
WTX - Wire transfers	9,014.25	17.63%
ONE - Online Electronic Payments	7,394.70	14.46%
DAC - Drafts and Collections	3,402.90	6.66%
SSI - Secure Sales - Internet Commerce	1,975.20	3.86%
MTG - Mortgages	1,814.86	3.55%
CCX - Credit Card	1,780.80	3.48%
RTM - Retirement	1,138.20	2.23%
DEP - Electronic Deposits	1,064.10	2.08%
TEL - Telephone Transactions	1,059.00	2.07%
Total Mainframe Storage Charges	51,127.03	

Any Town, USA

Rate Group	Charge	%
Total Equipment/Shared Services	3,977.00	0.52%
Total Unix DB2 Charges	1,738.08	0.23%
Total Unix Process Charges	266.64	0.03%
Total Unix Filesystem	2,639.05	0.34%
Total Unix Orade Charges	5,246.32	0.68%
Total MS Windows Storage Charges	6,421.56	0.83%
Total MS Windows SQL Server	7,347.82	0.95%
Total MS IIS	8,862.02	1.15%
Total MS Exchange Sent and Received	77.20	0.01%
Total MS Exchange Mailbox	19,326.43	2.51%
Total MS Windows Processes	641,936.46	83.29%
Total MS Windows Print	63.51	0.01%
Total Mainframe Batch Charges	3,796.87	0.49%
Total Mainframe TSO Charges	774.25	0.10%
Total Mainframe Input/Output Charges	520.36	0.07%
Total Mainframe Printer/Reader Charges	80.43	0.01%
Total Mainframe Storage Charges	51,127.03	6.63%

Preview

Usage and Accounting Manager



Unix Process for ATM-ATM Transactions by Process Name

Date Range: 4/1/2006 to 4/30/2006

Process Name	B21-Unix Process Character I/O (100,000s)	B22-Unix Process Image Time (Hours)	B23-Unix Process User CPU (Minutes)	B24-Unix Process System CPU (Minutes)	B25-Unix Process Total CPU (Minutes)	B26-Unix Process Memory (MB Days)
bellmail	3	0.00	0.00	0.00	0.00	2.46
httpd	0	166.79	0.01	0.00	0.01	12.22
odmget	2	0.00	0.00	0.00	0.00	4.55
oracle	62,945	421.12	71.42	17.25	88.67	174,241.53
pwd	2	0.00	0.00	0.00	0.00	0.95
tnslsr	0	0.00	0.00	0.00	0.00	133.46
Total	62,951	587.91	71.43	17.26	88.69	174,395.16

Usage and Accounting Manager



Detail VMware

Account Range: All Accounts

Date Range: 5/1/2006 to 5/31/2006

Account Code	VMware CPU Usage	VMware CPU Usage Guaranteed	VMware Disk Kilobytes Read	VMware Disk Kilobytes Written	VMware Memory Kilobytes Active	VMware Memory Kilobytes Granted	VMware Network Kilobytes Read	VMware Network Kilobytes Transferred
ATM - ATM Transactions	60,940	309,648	44,186	22,740	61,567,961	538,701,536	15,488	66,219
CCX - Credit Card	32,940	316,807	75,743	25,939	47,804,496	323,615,668	59,813	567,798
COM - Commercial Loans	310,787	1,070,378	74,949	76,991	339,788,854	1,691,339,912	22,417	120,073
DAC - Drafts and Collections	16,576	123,328	7,839	11,699	29,095,887	215,481,272	1,723	8,780
DEP - Electronic Deposits	58,949	279,554	14,628	11,614	37,321,207	251,392,808	3,146	23,283
MTG - Mortgages	220,475	795,237	86,667	63,917	185,942,473	1,938,282,868	21,763	105,006
ONE - Online Electronic Payments	17,074	154,123	42,371	17,534	14,120,502	161,267,193	11,196	2,123
RTM - Retirement	444,417	515,898	134,759	63,255	122,419,670	1,042,730,216	14,588	155,275
SSI - Secure Sales - Internet Commerce	154,264	959,894	147,728	29,185	127,079,399	1,833,819,572	133,883	136,530
TEL - Telephone Transactions	50,134	314,557	95,565	44,785	50,117,052	537,463,572	39,072	113,553
Run Total	1,366,556	4,839,424	724,435	367,659	1,015,257,501	8,534,094,617	323,089	1,298,640

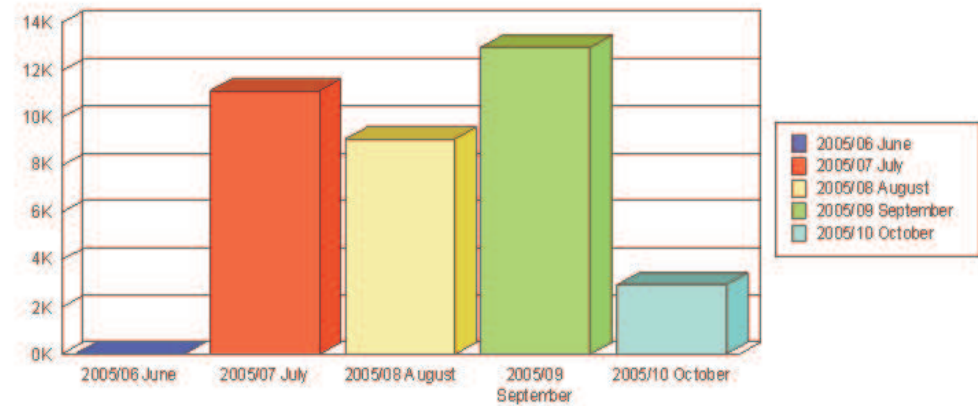
- DB2 Transaction Elapsed Minutes
- DB2 Accumulated Elapsed Minutes
- DB2 Entry/Exit Events
- DB2 I/O Activity (Get Pages)
- MS Windows SQL Server Records
- MS Windows SQL Server Duration (Seco
- MS Windows SQL Server CPU (Seconds)**
- MS Windows SQL Server Reads
- MS Windows SQL Server Writes
- MS Windows SQL Server Used (MB Days)
- IIS FTP Bytes Received
- IIS FTP Bytes Sent
- IIS FTP Successful Protocol Status 2xx
- IIS FTP Redirection Protocol Status 3xx
- IIS FTP Client Error Protocol Status 4xx
- IIS FTP Server Error Protocol Status 5xx
- IIS FTP Time Taken (Milliseconds)
- IIS Web Bytes Received
- IIS Web Bytes Sent
- IIS Web Successful Protocol Status 2xx
- IIS Web Redirection Protocol Status 3xx
- IIS Web Client Error Protocol Status 4xx
- IIS Web Server Error Protocol Status 5xx
- IIS Web Time Taken (Milliseconds)
- MS Windows Folder Disk Usage (GB Day)
- MS Windows Files in Folder
- MS Exchange Bytes Sent
- MS Exchange Emails Sent
- MS Exchange Bytes Received
- MS Exchange Emails Received
- MS Exchange Mailbox Count (Mailbox D
- MS Exchange Mailbox Size (MB Days)
- MS Exchange Mailbox (Message Days)
- MS Windows Elapsed Time in Seconds
- MS Windows CPU Time in Seconds
- MS Windows Kernel CPU Time in Second
- MS Windows User CPU Time in Seconds
- MS Windows Read Requests
- MS Windows KB Read
- MS Windows KB Written
- MS Windows Write Requests
- MS Windows Print Print Kbytes
- MS Windows Print Page Count
- Unix Orade Logins
- Unix Orade Session CPU (Minutes)
- Unix Orade Connect (Hours)

CIMS

Resource Usage Trend

Account Range: All Accounts
Year: 2005
MS Windows SQL Server CPU (Seconds)

Resource Usage per Month



Month	Resource Usage
2005/06 June	23.96
2005/07 July	11,171.50
2005/08 August	9,121.16
2005/09 September	12,989.78
2005/10 October	2,950.61
Total	36,257.00



Weekly Crosstab - Usage

Publish

Return

Preview

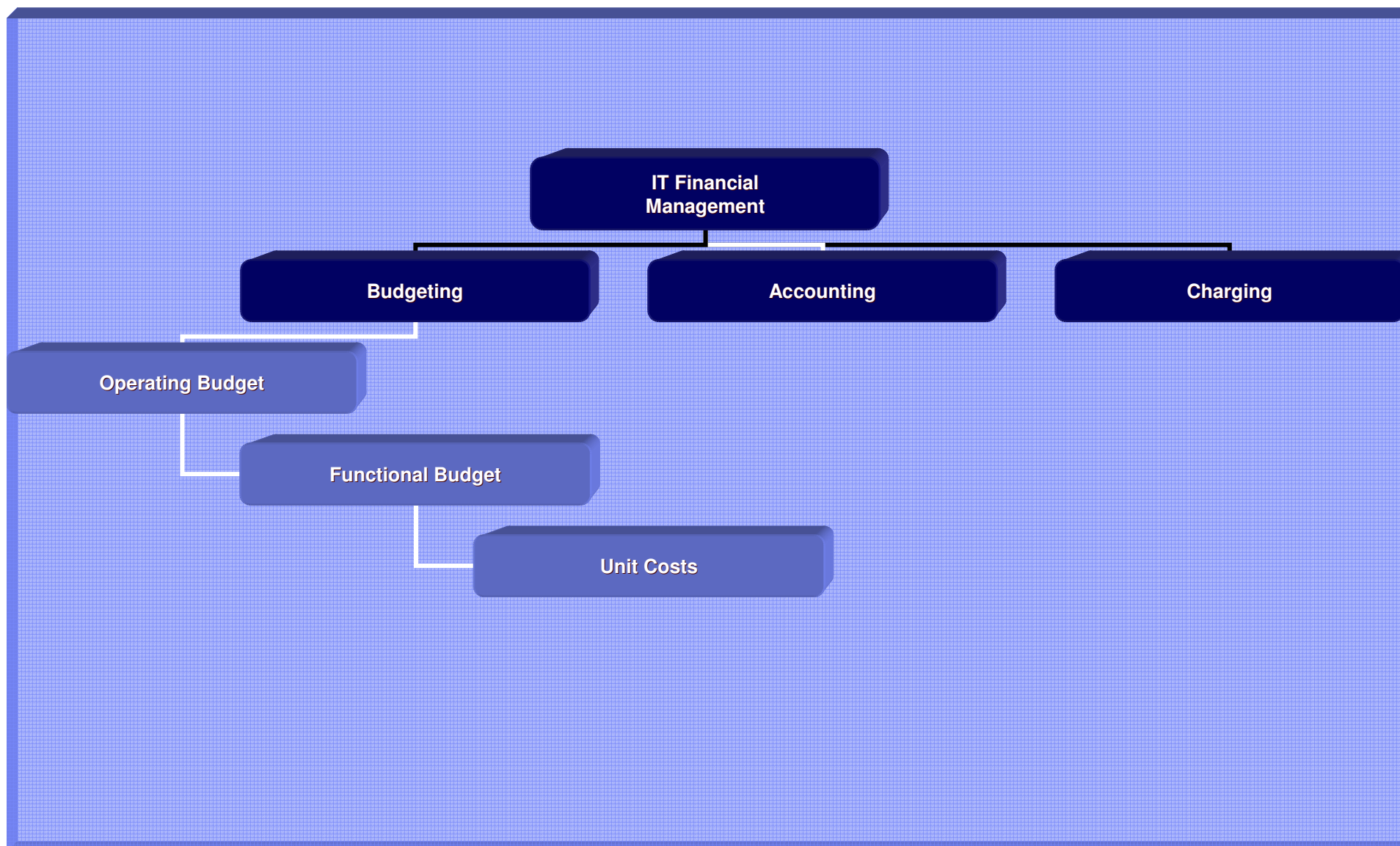
Usage and Accounting Manager

Account Weekly Crosstab - Resource Usage

Account Range: All Accounts
Date Range: 4/1/2006 to 4/30/2006

	Total All Weeks	3/26/2006	4/2/2006	4/9/2006	4/16/2006
ATM - ATM Transactions					
080 - Lines Printed - Local	102,000	3,400	23,800	23,800	23,800
087 - Pages Printed - Local	5,250	175	1,225	1,225	1,225
100 - PSF Number of Lines Printed	490,350	16,345	114,415	114,415	114,415
102 - PSF Number of Pages Printed	8,850	295	2,065	2,065	2,065
116 - PSF Number of Impressions	9,630	321	2,247	2,247	2,247
118 - PSF Number of Feet of Paper	7,920	264	1,848	1,848	1,848
160 - Disk Space Allocated (MB	36,679.5570	1,222.6519	8,558.5633	8,558.5633	8,558.5633
162 - Disk Space Used (Non VSAM)	30,577.6890	1,019.2563	7,134.7941	7,134.7941	7,134.7941
164 - Secondary Space Allocated	15,736.9710	524.5657	3,671.9599	3,671.9599	3,671.9599
166 - Disk Space Wasted (Non VSAM)	1,037.7960	34.5932	242.1524	242.1524	242.1524
212 - One Part Forms	8,850	295	2,065	2,065	2,065
228 - Standard Forms	5,250	175	1,225	1,225	1,225
400 - CICS Transaction Minutes	0.80	0.03	0.19	0.19	0.19
402 - CICS CPU Minutes	0.05	0.00	0.01	0.01	0.01

ITUAM gestisce i tasks di budgeting



Links [IBM Business Transformation](#) [IBM Internal Help](#) [IBM Business Transformation Homepage](#) [IBM Internal Help Homepage](#) [IBM Standard Software Installer](#)

File View Action Help

Logout New Open Save Add Rate Add Pool Add Subpool Def Rate Del Pool Del Subpool Shared

Demo rpc

Budget Values | Percent Allocation | Cost Calculations | Rate Calculations

Specify period type and number of periods and then enter the associated budget totals for each pool.

Period Type: Number of Periods:

	Accounts	Server Costs			Storage Costs			Software Costs			Other Hardware Costs	
		Mainframe	Unix	Wintel	Tape	DASD	San	Mainframe	Unix	Windows	Network	Host Printers
Enter Total		5,000,000	1,000,000	500,000	500,000	2,500,000	350,000	1,500,000	500,000	500,000	250,000	450,000
Budget Per Month		416,667	83,333	41,667	41,667	208,333	29,167	125,000	41,667	41,667	20,833	37,500

Personnel Costs			Miscellaneous Cost	
Support Staff	DBA Group	Help Desk	Floor Space	Etc.
3,500,000	1,250,000	500,000	200,000	0
291,667	104,167	41,667	16,667	0

Links IBM Business Transformation IBM Internal Help IBM Business Transformation Homepage IBM Internal Help Homepage IBM Standard Software Installer

File View Action Help

Logout New Open Save Add Rate Add Pool Add Subpool Del Rate Del Pool Del Subpool Shared

Demo rpc

Budget Values Percent Allocation Cost Calculations Rate Calculations

Distribute cost for each pool by entering percentages.

	Server Costs			Storage Costs			Software Costs			Other Hardware Costs	
	Mainframe	Unix	Wintel	Tape	DASD	San	Mainframe	Unix	Windows	Network	Host Printers
Enter Total Budget Amounts	5,000,000	1,000,000	500,000	500,000	2,500,000	350,000	1,500,000	500,000	500,000	250,000	450,000
Budget Per Month	416,667	83,333	41,667	41,667	208,333	29,167	125,000	41,667	41,667	20,833	37,500
Z017 - Pages Printed - Local	0%	0%	35%	0%	0%	0%	0%	0%	20%	0%	0%
Z016 - Lines Printed - Local	0%	0%	0%	0%	0%	0%	0%	0%	10%	0%	0%
WPRTSBPC - MS Windows Print Submit Page C...	0%	0%	0%	0%	0%	0%	0%	0%	10%	0%	0%
LLH101 - Unix Pages Printed	0%	0%	35%	0%	0%	0%	0%	0%	20%	0%	0%
LLA107 - Unix Interactive Total CPU (Minutes)	0%	20%	0%	0%	40%	60%	0%	0%	0%	0%	0%
WSCBytes - IIS Web Bytes Sent	0%	10%	0%	0%	0%	0%	0%	5%	0%	0%	0%
WTimeTkn - IIS Web Time Taken (Milliseconds)	0%	30%	0%	0%	0%	0%	0%	25%	0%	0%	0%
SQLWRITE - MS Windows SQL Server Writes	0%	10%	0%	0%	0%	0%	0%	0%	0%	0%	0%
SQLREADS - MS Windows SQL Server Reads	0%	10%	0%	0%	0%	0%	0%	0%	0%	0%	0%
SQLCPU - MS Windows SQL Server CPU (Secon...	0%	0%	30%	0%	0%	40%	0%	0%	0%	0%	0%
LLR105 - Unix Filesystem Used (GB Days)	0%	0%	0%	0%	0%	0%	0%	0%	0%	20%	0%
LLA104 - Unix Interactive Connect Time (Hours)	0%	0%	0%	0%	0%	0%	0%	0%	20%	5%	0%
LLE102 - Unix Oracle Session CPU (Minutes)	0%	0%	0%	0%	50%	0%	0%	0%	0%	0%	0%
LLE107 - Unix Oracle User Commits	25%	0%	0%	0%	0%	0%	20%	0%	0%	0%	0%
LLE103 - Unix Oracle Connect (Hours)	0%	0%	0%	95%	0%	0%	0%	0%	0%	0%	0%
DISKSIZ2E - MS Windows Folder Disk Usage (GB ...	25%	0%	0%	0%	0%	0%	0%	0%	0%	0%	0%
EXMBXMSG - MS Exchange Mailbox (Message D...	50%	0%	0%	5%	10%	0%	80%	0%	0%	75%	0%

Ready: User: know

Links IBM Business Transformation IBM Internal Help IBM Business Transformation Homepage IBM Internal Help Homepage IBM Standard Software Installer

File View Action Help

Logout New Open Save Add Rate Add Pool Add Subpool Del Rate Del Pool Del Subpool Shared

Demo rpc

Budget Values Percent Allocation Cost Calculations Rate Calculations

View cost calculations for each pool.

	Server Costs			Storage Costs			Software Costs			Other Hardware	
	Mainframe	Unix	Wintel	Tape	DASD	San	Mainframe	Unix	Windows	Network	Hardware
Total Budget 12 Months	5,000,000	1,000,000	500,000	500,000	2,500,000	350,000	1,500,000	500,000	500,000	250,000	0
Budget Per Month	416,667	83,333	41,667	41,667	208,333	29,167	125,000	41,667	41,667	20,833	0
SQLWRITE - MS Windows SQL Server Writes	0	0	0	0	0	0	0	0	4,167	0	0
SQLREADS - MS Windows SQL Server Reads	0	0	0	0	0	0	0	0	4,167	0	0
SQLCPU - MS Windows SQL Server CPU (Secon...	0	0	14,583	0	0	0	0	0	8,333	0	0
LLR105 - Unix Filesystem Used (GB Days)	0	16,667	0	0	83,333	17,500	0	0	0	0	0
LLA104 - Unix Interactive Connect Time (Hours)	0	8,333	0	0	0	0	0	2,083	0	0	0
LLE102 - Unix Oracle Session CPU (Minutes)	0	25,000	0	0	0	0	0	10,417	0	0	0
LLE107 - Unix Oracle User Commits	0	8,333	0	0	0	0	0	0	0	0	0
LLE103 - Unix Oracle Connect (Hours)	0	8,333	0	0	0	0	0	0	0	0	0
DISKSIZE - MS Windows Folder Disk Usage (GB ...	0	0	12,500	0	0	11,667	0	0	0	0	0
EXMBXMSG - MS Exchange Mailbox (Message D...	0	0	0	0	0	0	0	0	0	4,167	0
EXMBXSIZ - MS Exchange Mailbox Size (MB Days)	0	0	0	0	0	0	0	0	8,333	1,042	0
ZDSK@@06 - Migrated to Tape DSNs	0	0	0	0	104,167	0	0	0	0	0	0
ZZ32 - DB2 Transaction CPU Minutes	104,167	0	0	0	0	0	25,000	0	0	0	0
ZZ05 - Tape Mounts	0	0	0	39,583	0	0	0	0	0	0	0
Z036 - TSO CPU Minutes (All)	104,167	0	0	0	0	0	0	0	0	0	0
Z003 - Mainframe CPU Minutes	208,333	0	0	2,083	20,833	0	100,000	0	0	15,625	0
Total	416,667	83,333	41,667	41,667	208,333	29,167	125,000	41,667	41,667	20,833	0

File View Action Help

Logout New Open Save Add Rate Add Pool Add Subpool Del Rate Del Pool Del Subpool Shared

Demo rpc

Budget Values Percent Allocation Cost Calculations Rate Calculations

Exclude Accounts + - Date Range Custom

From 05/01/2006 To 05/31/2006 Calculate Rates Update Rates Run Report

Resource Name	Budget Per Month	Total Units	Units Per Month	Current Rate	Per 1000	Zero Cost Rate	Factor	New Rate
Z017 - Pages Printed - Local	37,500	7116338838.00000	7001559179.32259	0.00100	M	0.00536	1	0.
Z016 - Lines Printed - Local	62,083	166856805.00000	164165566.20968	0.00000		0.00038	1	0.
WPRTSBPC - MS Windows Print Sub...	5,000	15547844.00000	15297072.32258	0.08000	M	0.32686	1	0.
LLH101 - Unix Pages Printed	5,000	261924361.00000	257699774.53226	0.00120	M	0.01940	1	0.
LLA107 - Unix Interactive Total CPU...	54,167	17422.28900	17141.28434	0.01500	M	3159.97325	1	3159.
WSCBytes - IIS Web Bytes Sent	133,750	561.66300	552.60392	0.00000		242.03592	1	242.
WTimeTkn - IIS Web Time Taken (Mi...	10,417	0.00000	0.00000	0.09500		0.00000	1	0.
SQLWRITE - MS Windows SQL Serv...	71,875	446.13000	438.93435	0.23000		163.74886	1	163.
SQLREADS - MS Windows SQL Serv...	8,333	12943.89000	12735.11758	0.00250		0.65433	1	0.
SQLCPU - MS Windows SQL Server ...	8,333	16971.07000	16697.34306	0.04500		0.49906	1	0.
LLR105 - Unix Filesystem Used (GB ...	31,667	1927.60882	1896.51836	0.00001	M	16696.91196	1	16696.
LLA104 - Unix Interactive Connect ...	4,167	30.00000	29.51613	0.00100		141.14317	1	141.
LLE102 - Unix Oracle Session CPU (...	15,625	106.11000	104.39855	0.15000	M	149666.83198	1	149666.
LLE107 - Unix Oracle User Commits	108,333	0.00000	0.00000	0.00000		0.00000	1	0.
LLE103 - Unix Oracle Connect (Hours)	155,208	1086.31440	1068.79320	0.00000		145.21799	1	145.
DISKSIZE - MS Windows Folder Disk ...	68,750	5.00000	4.91935	0.00000		13975.40984	1	13975.
EXMBXMSG - MS Exchange Mailbox (...	112,500	59.41766	58.45931	0.00000		1924.41544	1	1924.
EXMBXSIZ - MS Exchange Mailbox Si...	546.875	237.78200	233.94681	10.00000		2337.60404	1	2337.