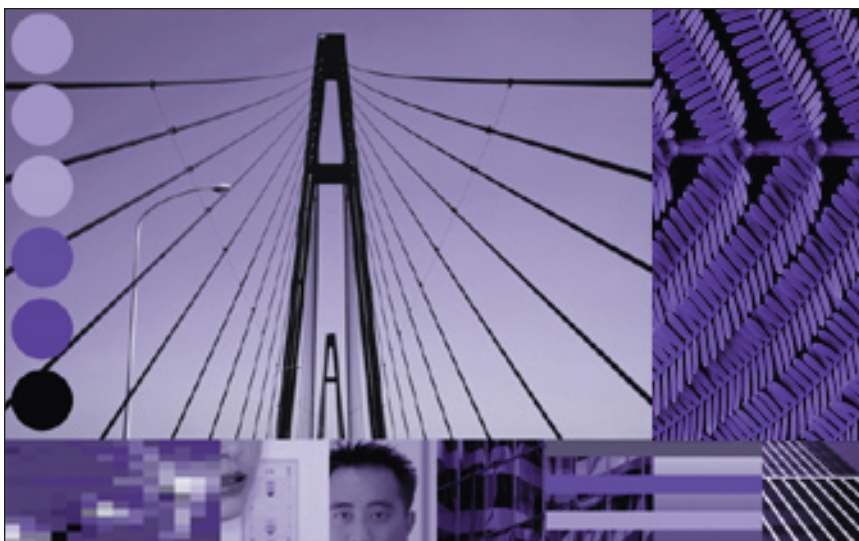


IBM WebSphere Business Integration InterChange Server Assessment and Migration Service



Highlights

- **Get ahead of your competitors!**
Team with IBM technical consultants and migrate to the latest versions of WebSphere Business Integration Server software.
- **Resource or skill constrained?**
Stay cutting edge with the WebSphere Business Integration InterChange Server Migration Service

Your Business Challenge

- *Assessing what it will take for you to upgrade to 4.2.2 efficiently and effectively*
- *Finding the right skills to migrate to the latest WebSphere Business InterChange Server software*
- *Minimizing the inherent risks of moving a stable production system to a newer version platform*
- *Maximizing your investment in WebSphere Business Integration Server Software*
- *Performing a cost effective migration*

Services Solution

A solution customized to your business' needs, the WebSphere Business Integration InterChange Server Assessment and Migration Service is available in two different packages:

Package 1 - Migration Assessment:

A. Questionnaires

In the first stage, you will be asked to provide answers to carefully selected questions concerning your application, processes, and infrastructure.

Questionnaires are provided for your development environment, application architecture, runtime environment, and testing practices. These questionnaires help us discover as much qualitative and quantitative information as possible about your applications and environment.

B. Discussion

In the next stage, our experienced migration consultant reviews your answers. They will schedule a convenient time to discuss any additional information needed to assess your migration needs.

C. Report

In the final stage, based on the information gathered, the consultant will write a report that details the findings. The report discusses the main issues you will face during the migration, provides options and references to additional reading materials, and architects a high-level migration plan.

Migration Assessment Costs (and potential rebate)

IBM Software Services for WebSphere is offering an assessment rebate to you toward your WBI 4.2.2. migration. We will do a three day migration assessment for \$6,168.00 (24 hours (3 days) x \$257 = \$6,168). We will provide you with a document outlining the assessment results and suggestions for your migration. If you then agree to use ISSW to assist with the migration, we will credit the assessment fee toward the migration. The actual migration must be a minimum of 120 hours in order to receive credit for the assessment work.

Package 2 - Migration

This will enable you to take full advantage of our deeply skilled consultants. We will assist you in the migration and provide appropriate additional information to help you gain the best business value for your software use.

Benefits

By providing a tailored migration to suit your business' needs, this service enables you to maximize the benefits of your initial investment

in WebSphere Business Integration Server Software. Plus, this offering will give you peace of mind knowing that your migration is being performed with minimal risk.

Solution Outline

The WebSphere Business Integration InterChange Server Migration Service consists of numerous onsite tasks. In a nutshell, the consultants will install previous versions of the software, install and migrate supporting software, and validate ICS components. In the Premium Migration Service, the consultant goes on to system test all interfaces, and deploy ICS to production/support.

- *Migration of your WBI Adapters*
- *Post migration validation testing*
- *Migration of your InterChange Server environment to a supported version of the software for which a migration path is supported*
- *Validating that all migrated components work as intended in the new environment*
- *System testing the new environment to ensure it functions correctly*
- *Redeploying the migrated components into production*
- *Post Production Support*

Your Requirements

In preparation for the WebSphere Business Integration InterChange Server Migration Service, you will need to ensure the pre-requisite software is installed on a timely basis. For the migration to run smoothly, an adequate level of access to all environments and technical resources needs to be provided. as required by the IBM consultants. In terms of follow up, you will need to test the remainder of the interfaces and redeploy them to a product environment.

Duration

The migration duration will be determined by the migration assessment of the IBM Consultant.

Contact

Please contact your local Services Sales Specialist through our website: www.ibm.com/WebSphere/developer/services/contacts.html



© Copyright IBM Corporation 2004

IBM (United States)

Route 100, Building 1
Somers, NY, 10589
USA

IBM and WebSphere are trademarks or registered trademarks of International Business Machines Corporation in the United States and other countries. All rights reserved.

UNIX is a registered trademark of The Open Group in the United States and other countries.

Other company, product and service names may be trademarks or service marks of others.

References in this publication to IBM products or services do not imply that IBM intends to make them available in all countries in which IBM operates.

The IBM home page on the Internet can be found at **ibm.com**