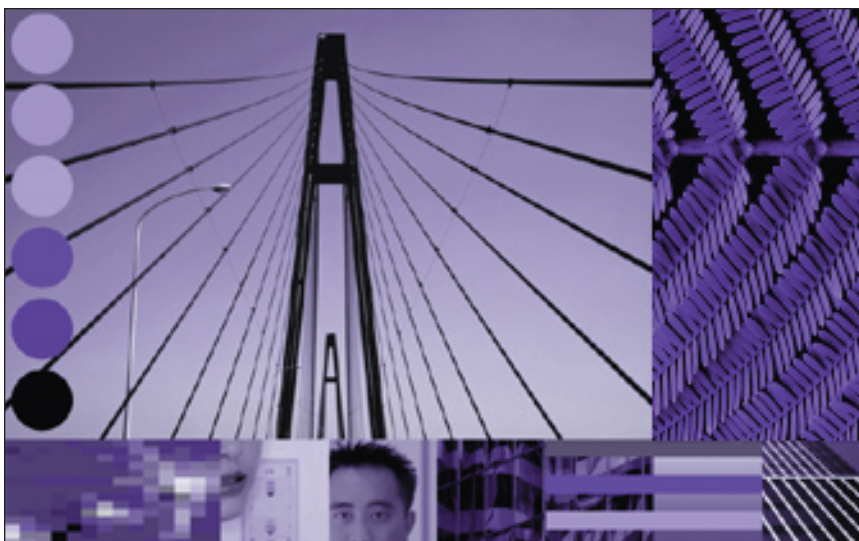


WebSphere® software

WebSphere Business Integration Migration Service



Highlights

- **Get ahead of your competitors!**
Team with IBM technical consultants and migrate to the latest versions of WebSphere Business Integration software
- **Resource or skill constrained?**
Stay cutting edge with WebSphere Business Integration Migration Service

Your Business Challenge

- *Finding the right skills to migrate to the latest WebSphere Business Interchange Server software*
- *Minimizing the inherent risks of moving a stable production system to a newer version platform*
- *Maximizing your initial investment in WebSphere Business Integration software*
- *Performing a cost effective migration*

Services Solution

A solution customized to your business' unique needs, the WebSphere Business Integration Migration Service is available in two different packages:

Basic Migration:

This comprehensive package includes a cost effective migration of the base WebSphere BI InterChange Server and Adapter infrastructure, all within an explicitly-constrained scope. Since this package has a fixed price, you can rest assured that there won't be any surprises at the end!

Premium Migration:

This enhanced package has a more flexible scope, enabling you to take full advantage of our deeply skilled consultants. It includes everything in the basic migration while addressing additional needs and providing increased support.

Benefits

By providing a tailored migration to suit your business' needs, this service enables you to maximize the benefits of your initial investment in WebSphere Business Integration

software. Plus, this offering will give you peace of mind knowing that your migration is being performed with minimal risk.

Solution Outline

The IBM Business Integration Migration Service consists of numerous onsite tasks. In a nutshell, the consultant will uninstall previous versions of the software, install and migrate supporting software, and validate ICS components. In the Premium Migration Service, the consultant goes on to system test all interfaces, and deploy ICS to production/support.

Deliverables

Basic Migration:

- *Post-migration validation testing of one interface*
- *Migration of two WBI Adapters (associated with the one interface to undergo post-migration validation)*
- *Migration of one InterChange Server environment to a supported version of the software for which a migration path is supported*

Premium Migration:

All of the basic deliverables plus:

- *Validating that all migrated components work as intended in the new environment*
- *System testing the new environment to ensure it functions correctly*
- *Redeploying the migrated components into production*
- *Post-production support*

Your Requirements

In preparation for the IBM Business Integration Migration Service, you will need to ensure that pre-requisite software is installed on a timely basis. For the migration to run smoothly, an adequate level of access to all environments and technical resources needs to be provided, as required by the IBM consultant. In terms of follow up, you will need to test the remainder of the interfaces and re-deploy them to a production environment.

Duration

The Basic Migration involves 80 hours of work by the IBM consultant, while the Premium Migration is customized to your needs.

Contact

Please contact us at wbiserv@us.ibm.com. To learn more about our WebSphere Business Integration services or to contact a services sales specialist, visit <http://www-3.ibm.com/software/integration/wbiserver/services/>



© Copyright IBM Corporation 2003

IBM (United States)

Route 100, Building 1
Somers, NY, 10589
USA

All Rights Reserved.

IBM, WebSphere and the e-business software logo are trademarks or registered trademarks of International Business Machines Corporation in the United States and other countries. All rights reserved.

Other company, product, and service names may be trademarks or service marks of others

References in this publication to IBM products and services do not imply that IBM intends to make them available in all countries in which IBM operates.

The IBM home page on the Internet can be found at **[ibm.com](http://www.ibm.com)**