



WebSphere® Monitor

Version 6.0.2



Monitor Administration sample

Table of Contents

Introduction	3
Part 1. Installation	4
Part 2. Configuration	7
Part 3. Using the Admin Sample	19
Part 4. Sample Source Files.....	24

Table of Figures

Figure 1. The Manage Web Modules page opens	4
Figure 2. Step 1: Selecting a WAR file page opens	5
Figure 3. Step 2: View WAR file contents page opens	6
Figure 4. Wait until you see this message.....	6
Figure 5. Click the Configure icon to access this screen	7
Figure 6. Select a monitor model that you have set up.....	8
Figure 7. Select the monitoring context which contains the information	9
Figure 8. Select at least one metric.....	10
Figure 9. The "Process Instance ID" metric is selected	11
Figure 10. Click Finish to save.....	12
Figure 11. Click the Configure icon to access this screen.....	13
Figure 12. Type the metric name in the Metric Name field.....	14
Figure 13. Click Finish to save the configuration	15
Figure 14. The Edit Layout page is displayed.....	16
Figure 15. The Portlet Wiring Tool is displayed	17
Figure 16. Click the Add wire (+) icon to create the wire.....	18
Figure 17. Display the process identifier for the selected instance	19
Figure 18. Query the system to determine the current status.....	20
Figure 19. Click Suspend to temporarily pause execution	21
Figure 20. Click Resume to resume execution	22
Figure 21. Click Terminate to halt execution	23

Introduction

The IBM WebSphere® Business Monitor, V6.0.2 product has been redesigned around the Business Activity Monitoring (BAM) programming model. This change allows the product to work with more runtime environments and reduces the dependencies that require special processing or handling outside the scope of business monitoring.

One example of this change is the removal of WebSphere Process Server administration functionality from the WebSphere Business Monitor Instances view (formerly Active Instances view). Instead, the Instances view has been structured to allow cooperation with other portlets that can perform process administration for many types of instances (and not just WebSphere Process Server processes).

This sample is being provided to demonstrate a custom administration portlet for WebSphere Process Server processes.

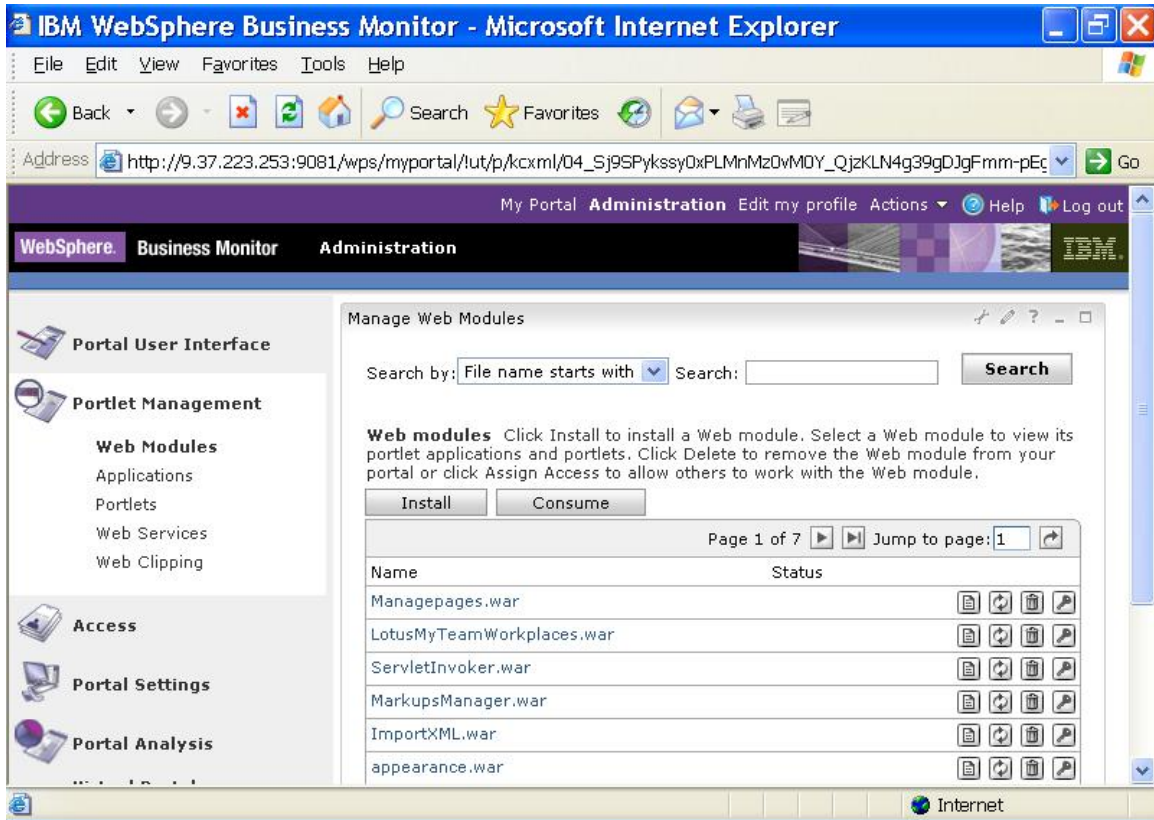
Part 1. Installation

The Monitor Admin Sample is provided as a Web archive (WAR) file that can be installed using WebSphere Portal.

To install the sample, complete the following steps:

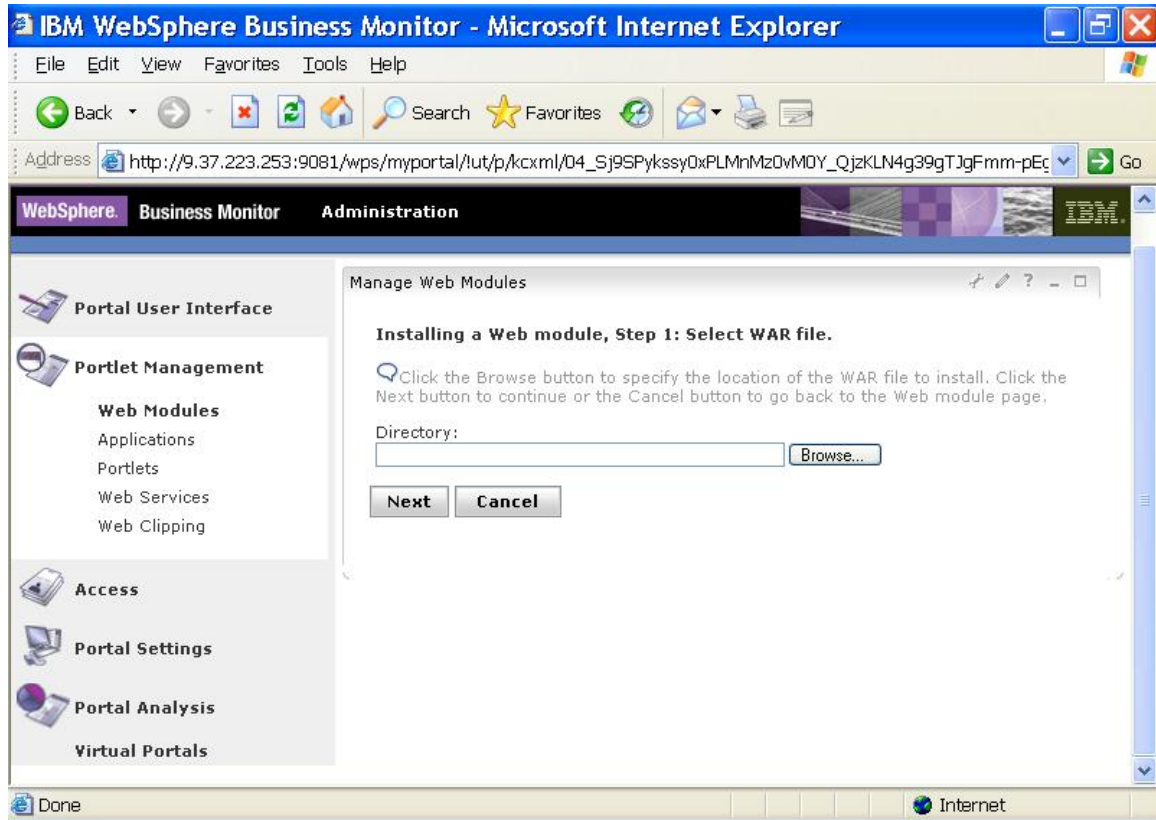
1. Log in to WebSphere Portal where the Business Monitor is installed, using an administrator user ID and password.
2. On the WebSphere Portal Welcome page, click the **Administration** tab.
3. Click **Portlet Management**, and then click **Web Modules**. The Manage Web Modules page opens.

Figure 1. The Manage Web Modules page opens



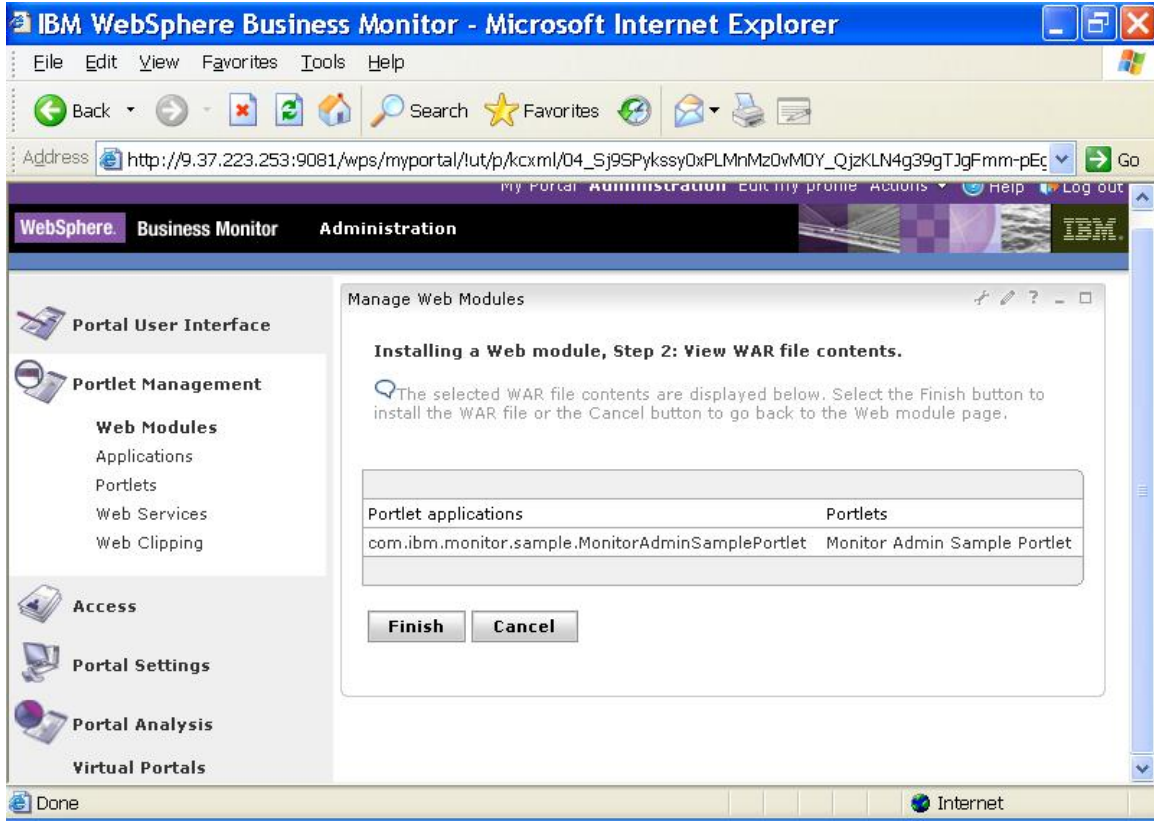
- 4. Click **Install**. The **Installing a Web module, Step 1: Selecting a WAR file** page opens.

Figure 2. Step 1: Selecting a WAR file page opens



5. Click **Browse** to specify the MonitorAdminSample.war file, and then click **Next**. The **Installing a Web module, Step 2: View WAR file contents** page opens.

Figure 3. Step 2: View WAR file contents page opens



6. Click **Finish** and then wait until you see the following message:

Figure 4. Wait until you see this message



Now that you have installed the sample, you are ready to make a copy of the sample portlet and add it to your dashboard.

See the Tutorial: Administering dashboards section of the WebSphere Business Monitor documentation for more information about copying a portlet and adding a portlet to a dashboard.

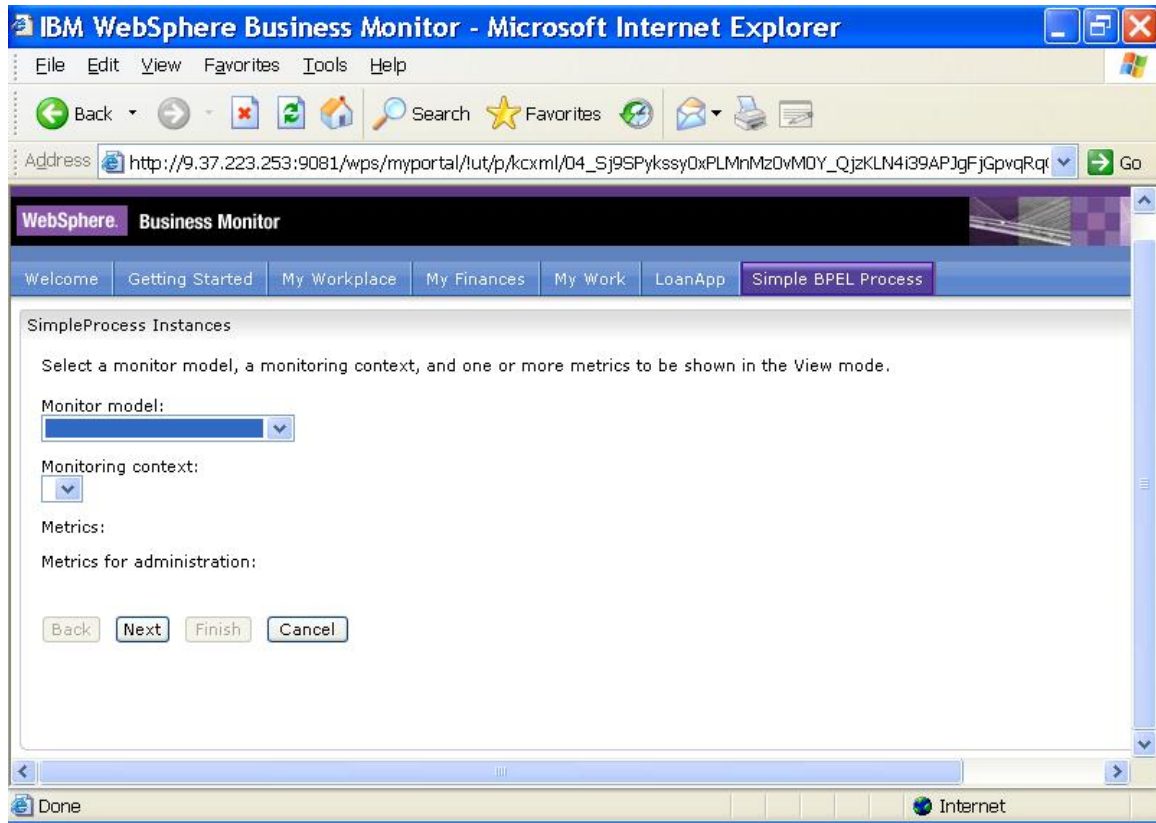
Part 2. Configuration

The WebSphere Business Monitor Admin Sample and the Instances view must both be configured correctly and wired together to function properly.

To configure the Instances view, complete the following steps:

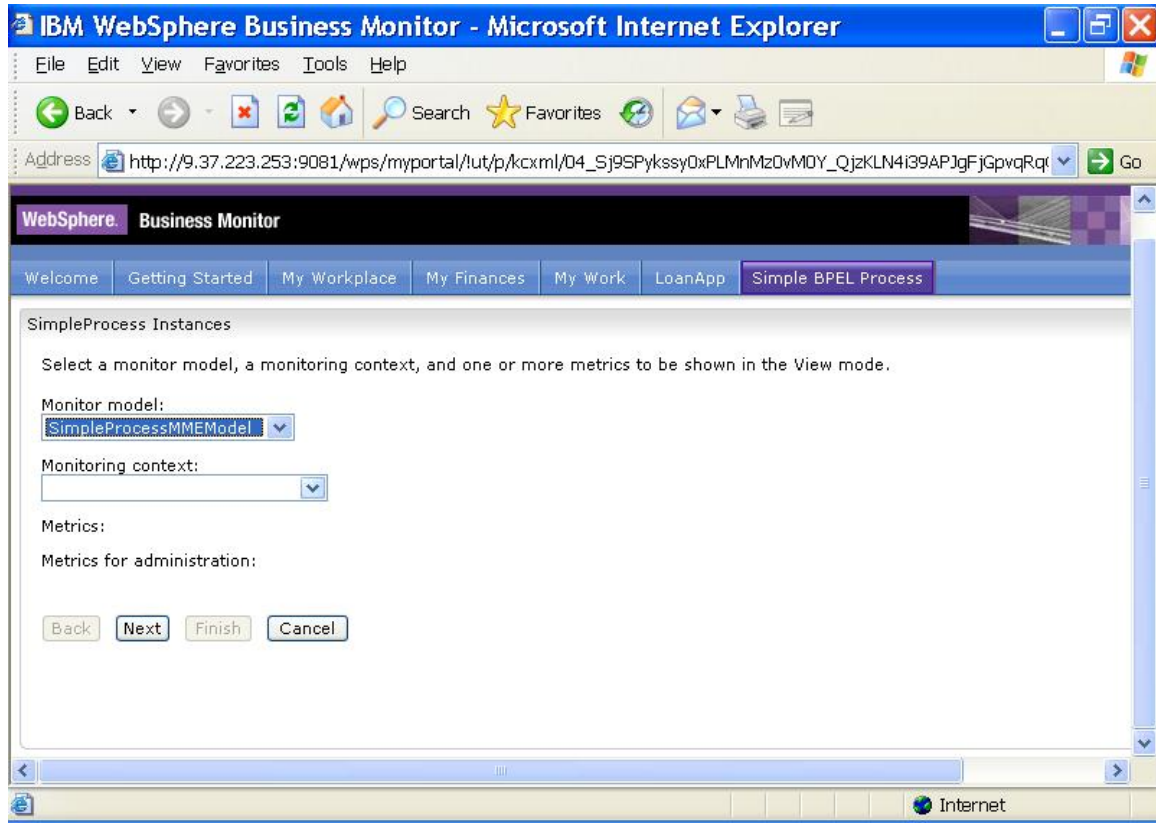
1. In the Instances view toolbar, click the **Configure** icon, which results in the following:

Figure 5. Click the Configure icon to access this screen



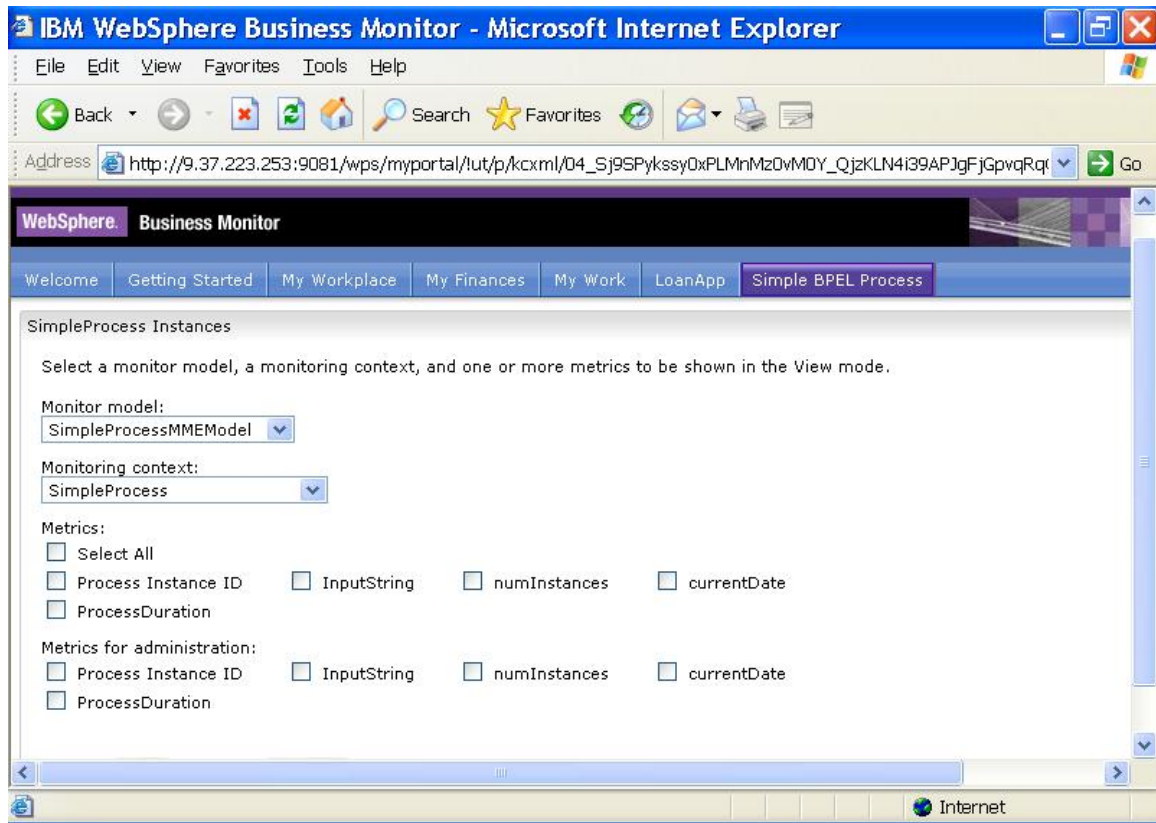
2. From the **Monitor Model** list, select your model that monitors WPS processes. The **SimpleProcessMMEModel** example monitor model has been selected for that purpose in this exercise. In your case, select a monitor model that you have set up in your environment.

Figure 6. Select a monitor model that you have set up



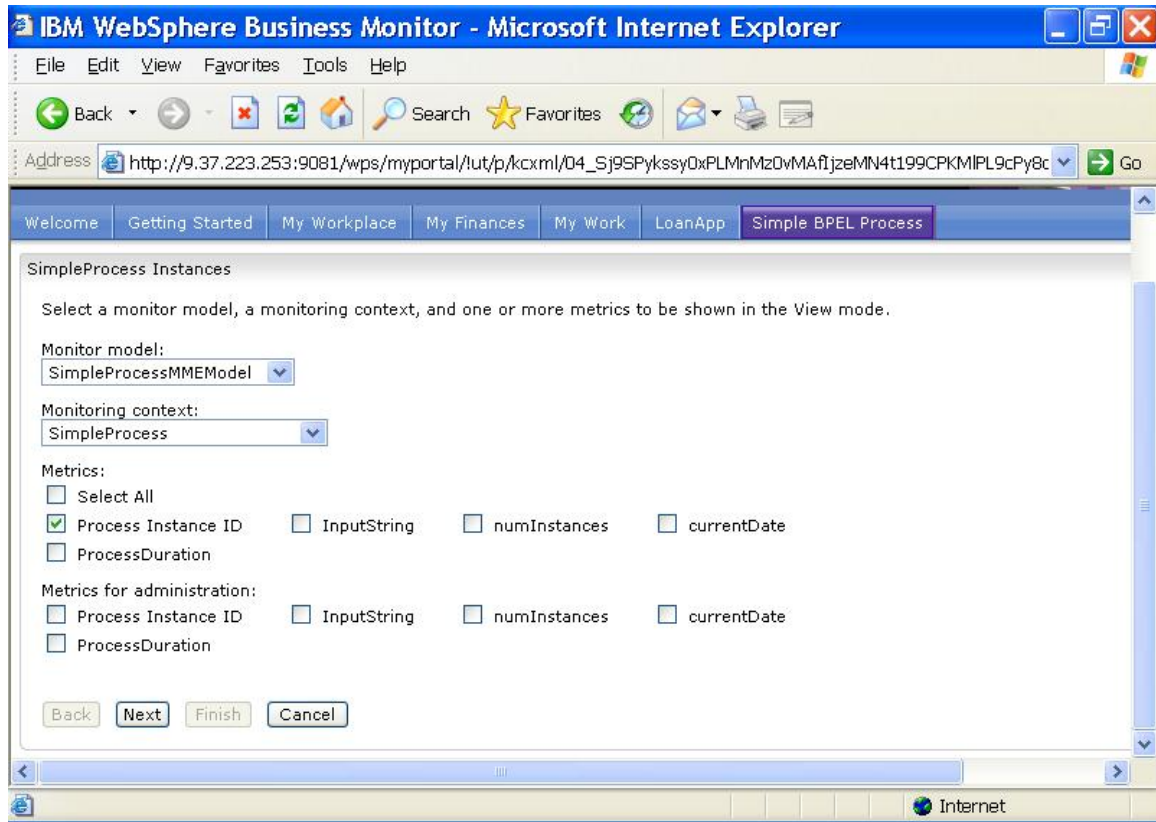
3. From the **Monitoring context** list, select your monitoring context that contains the information about the WPS processes. For purposes of this exercise, the **SimpleProcess** context has been selected from the example model. In your case, select the monitoring context which contains the information about the WPS process you want to administer.

Figure 7. Select the monitoring context which contains the information



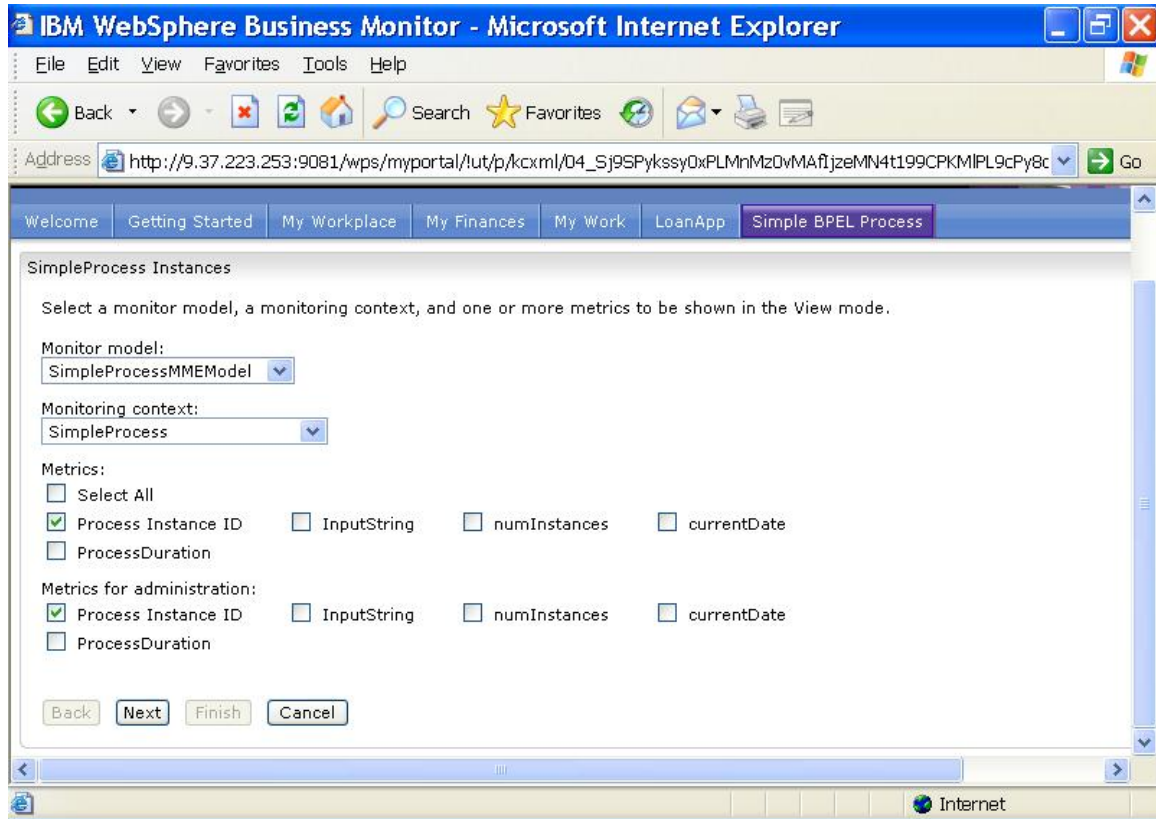
4. In the **Metrics** section, select metrics to be displayed so the user will be able to uniquely identify each WebSphere Process Server process. You must select at least one metric.

Figure 8. Select at least one metric



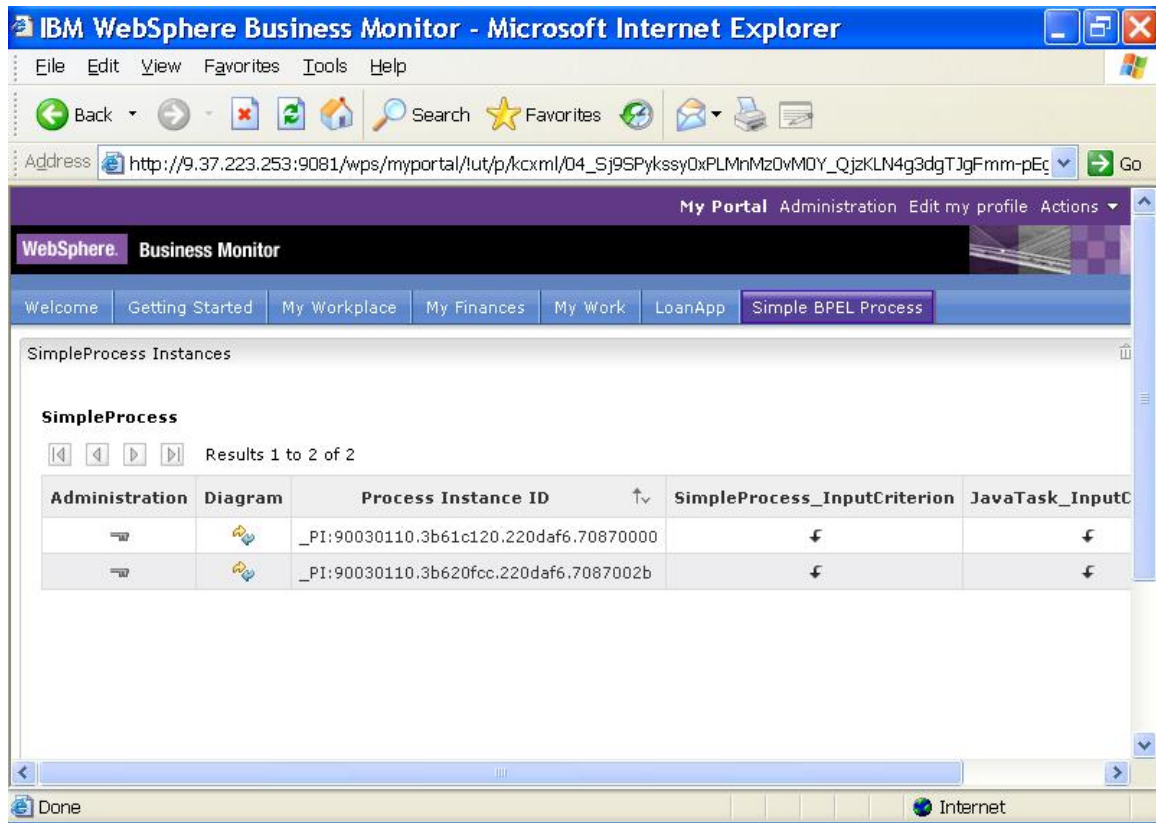
5. In the **Metrics for administration** section, select the metric that corresponds to the WebSphere Process Server process identifier. Make a note of this metric name, because you will need to correctly configure the Monitor Admin Sample. For this document, the **Process Instance ID** metric is selected from the example model.

Figure 9. The "Process Instance ID" metric is selected



- ___ 6. Click **Next** to continue. The page for setting sorting options and currency is displayed.
- ___ 7. Click **Next** to continue. The page for setting filtering options is displayed.
- ___ 8. Click **Next** to preview the configuration.
- ___ 9. Click **Finish** to save the configuration.

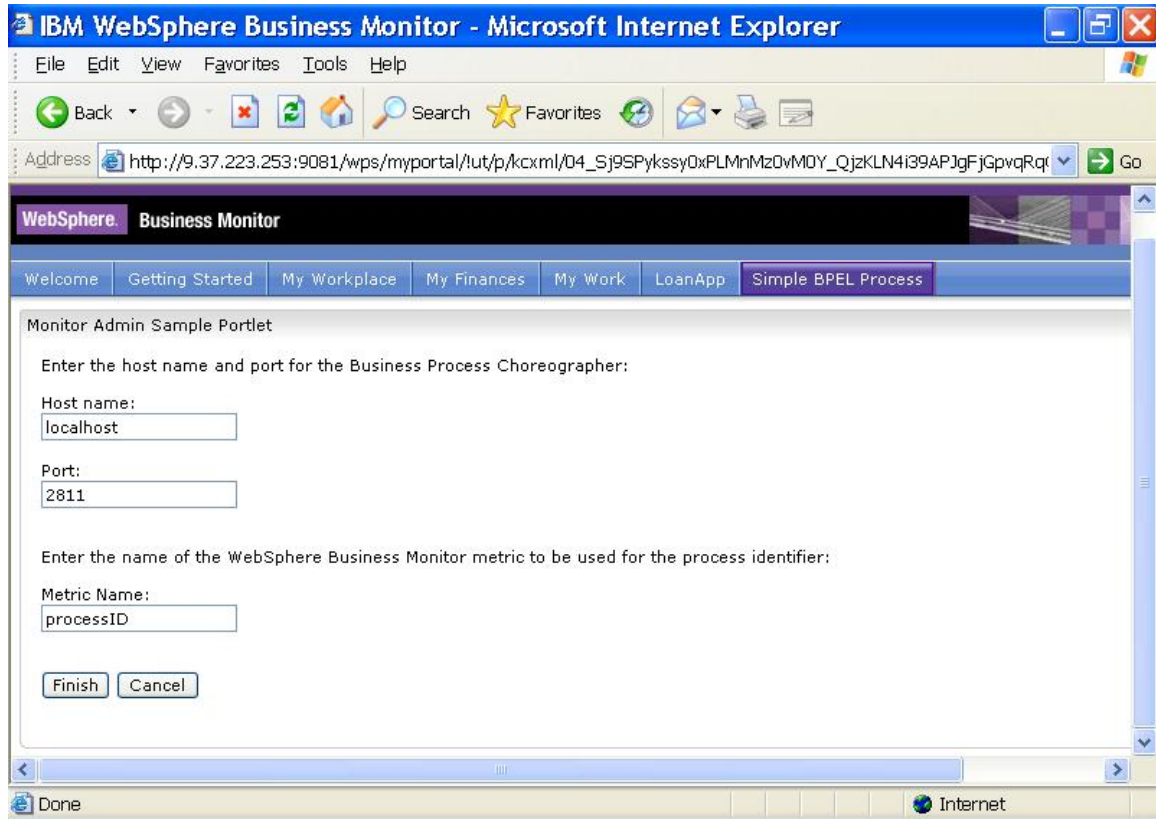
Figure 10. Click Finish to save



To configure the Monitor Admin Sample, complete the following steps:

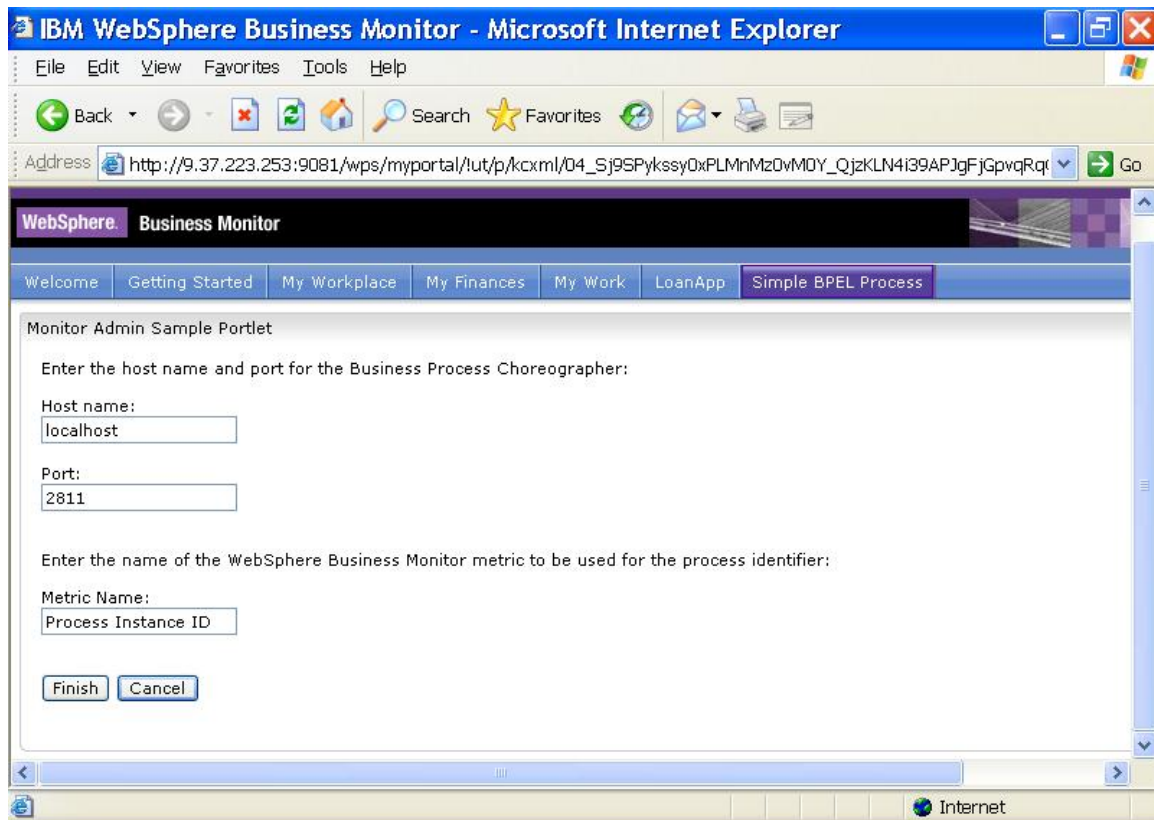
1. In the Admin Sample view toolbar, click the **Configure** icon, which results in the following:

Figure 11. Click the Configure icon to access this screen



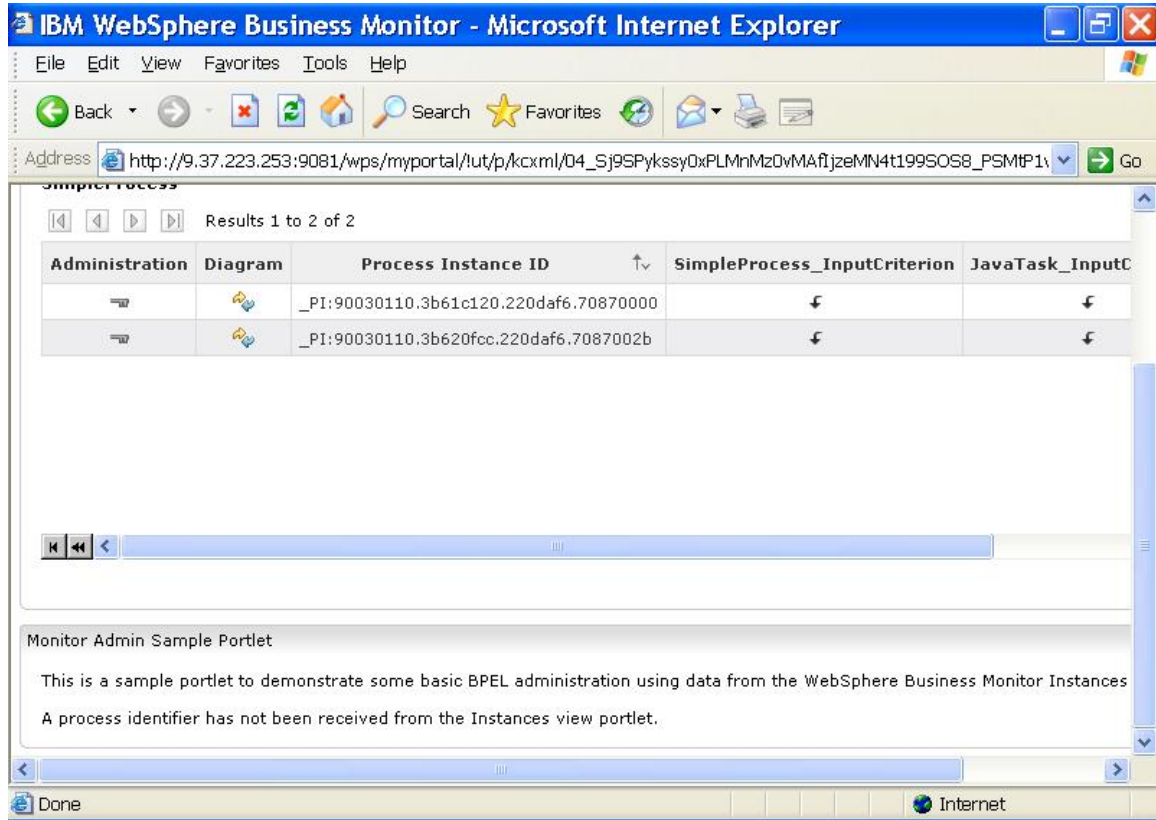
- _____ 2. In the **Host name** field, type the host name or address where WebSphere Process Server is installed. If WebSphere Process Server is installed on the same system as WebSphere Business Monitor, use the default setting of localhost.
- _____ 3. In the **Port** field, type the number of port that will be used to communicate with WebSphere Process Server. This port, commonly referred to as the RMI port or bootstrap port, is normally 2809 for systems that have only WebSphere Process Server installed or 2811 if both WebSphere Process Server and WebSphere Business Monitor are installed.
- _____ 4. In the **Metric Name** field, type the metric name (from Configuring the Instances view, step 5) that corresponds to the WebSphere Process Server process identifier.

Figure 12. Type the metric name in the Metric Name field



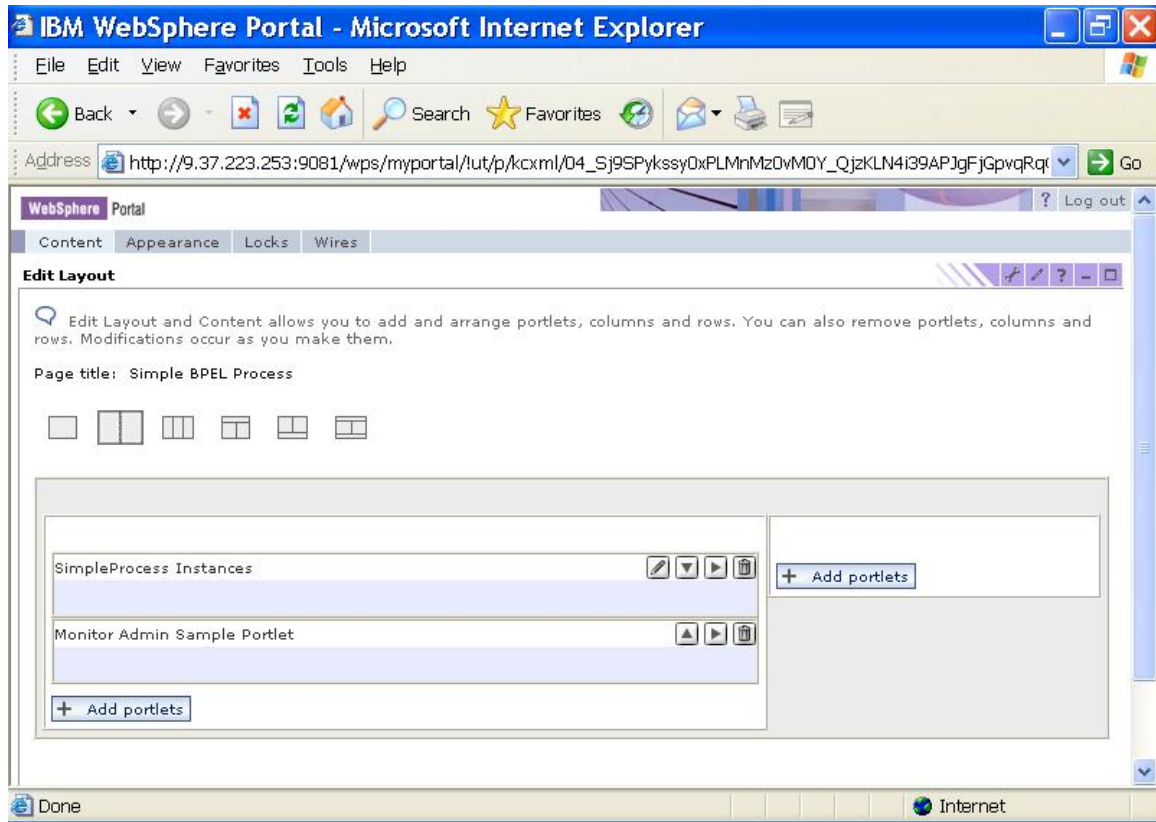
____ 5. Click **Finish** to save the configuration.

Figure 13. Click Finish to save the configuration



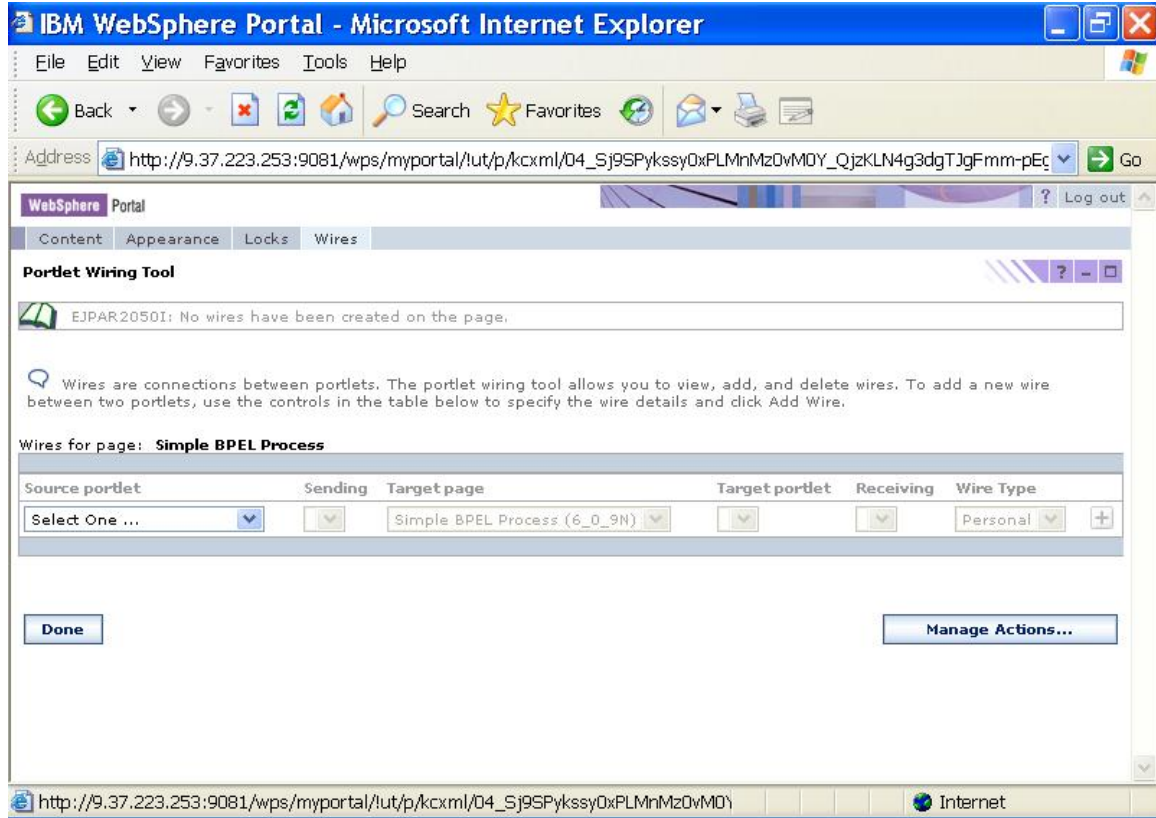
To create a wire between the portlets, complete the following steps:
____ 1. From the WebSphere Portal Actions menu, select **Edit Page**. The **Edit Layout** page is displayed.

Figure 14. The Edit Layout page is displayed



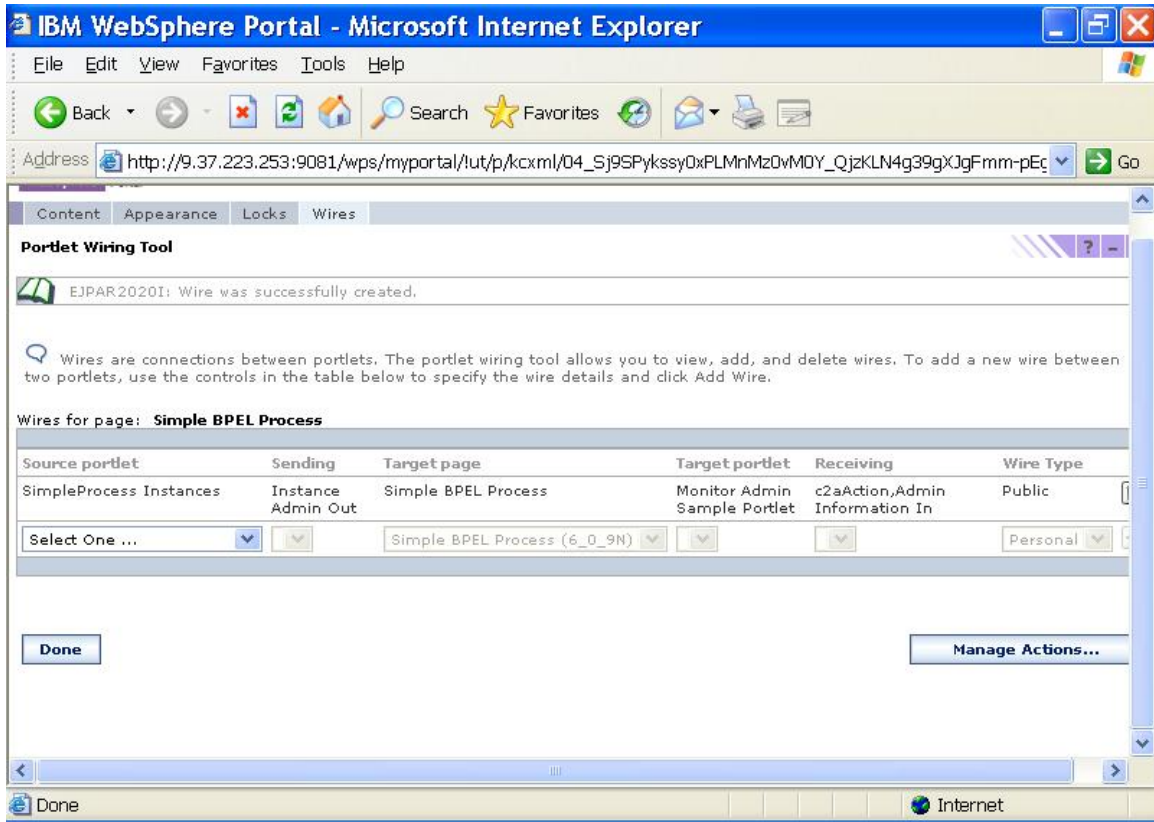
- _____ 2. Select the **Wires** tab. The **Portlet Wiring Tool** is displayed.

Figure 15. The Portlet Wiring Tool is displayed



- ___ 3. From the **Source portlet** list, select your configured Instances view.
- ___ 4. From the **Sending** list, select **Instance Admin Out**.
- ___ 5. From the **Target portlet** list, select your configured Monitor Admin Sample portlet. This is the sample portlet that performs process administration.
- ___ 6. From the **Receiving** list, select **c2aAction,Admin Information In**.
- ___ 7. From the **Wire Type** list, select Public.
- ___ 8. Click the Add wire (+) icon to create the wire.

Figure 16. Click the Add wire (+) icon to create the wire

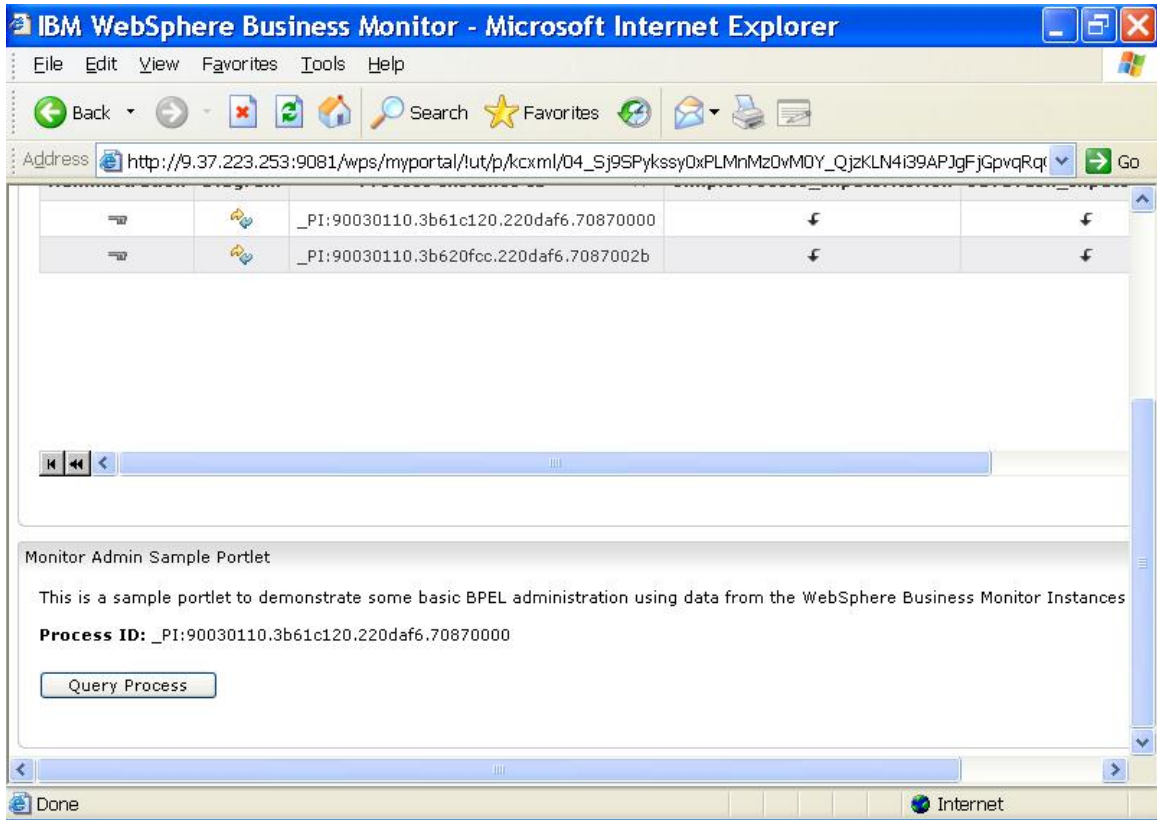


- ___ 9. Click **Done**.

Part 3. Using the Admin Sample

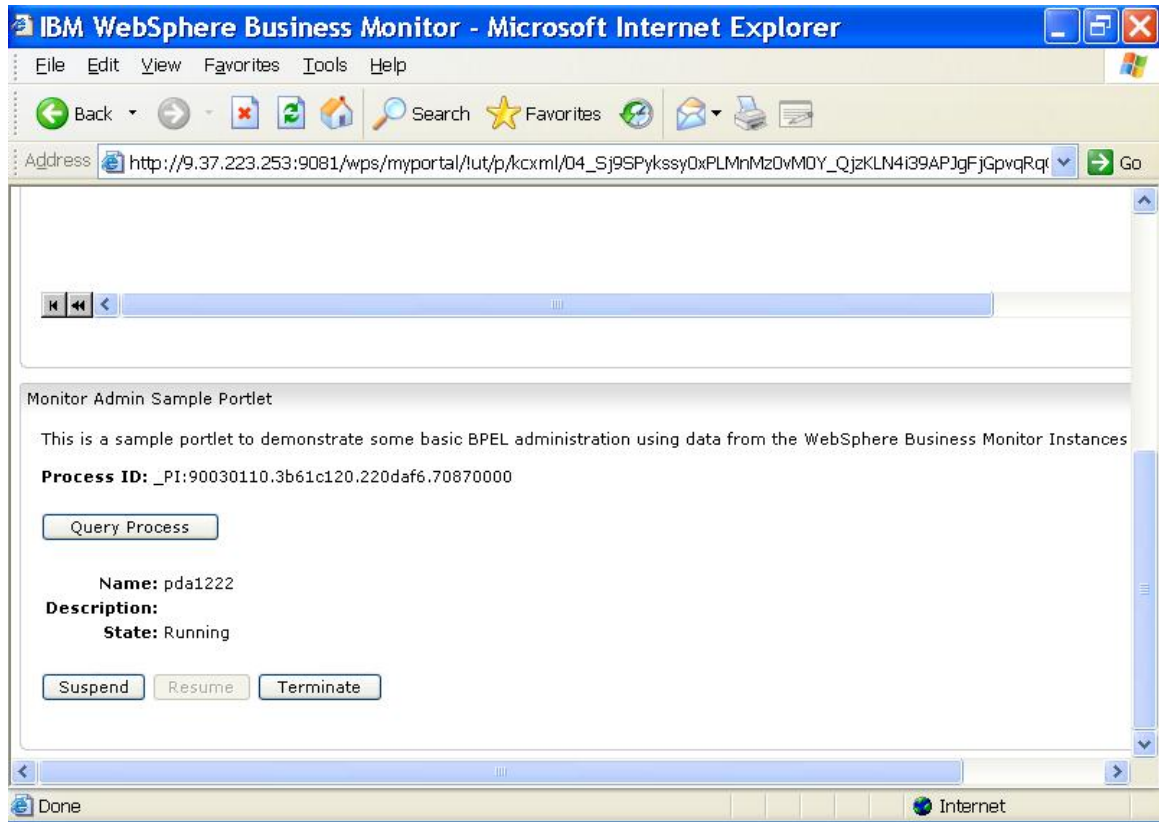
To use the Monitor Admin Sample, you must first select a WebSphere Process Server process from the Instances view that you would like to administer. To select a WebSphere Process Server process, click the icon in the Administration column for the instance. The Monitor Admin Sample portlet will display the process identifier for the selected instance.

Figure 17. Display the process identifier for the selected instance



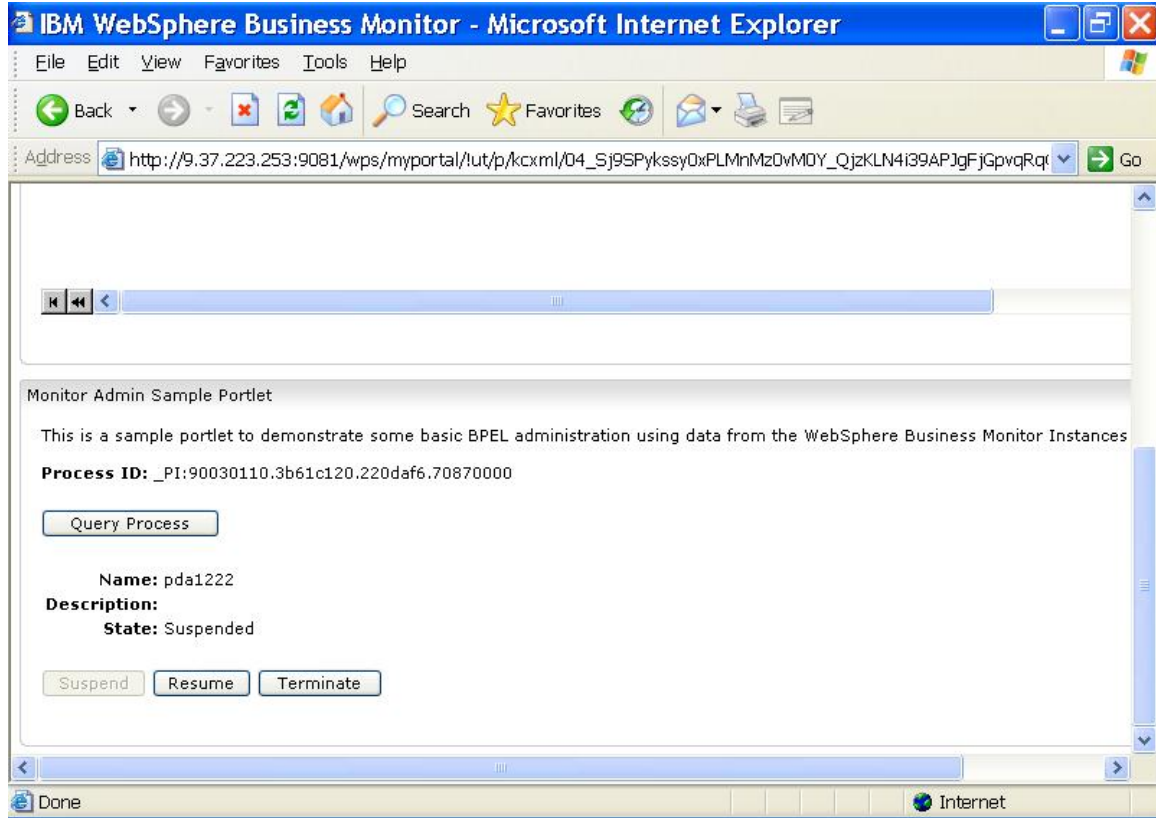
After selecting a WebSphere Process Server process, you can query the system to determine the current status of the process by clicking **Query Process**. The current status of the process will be displayed.

Figure 18. Query the system to determine the current status



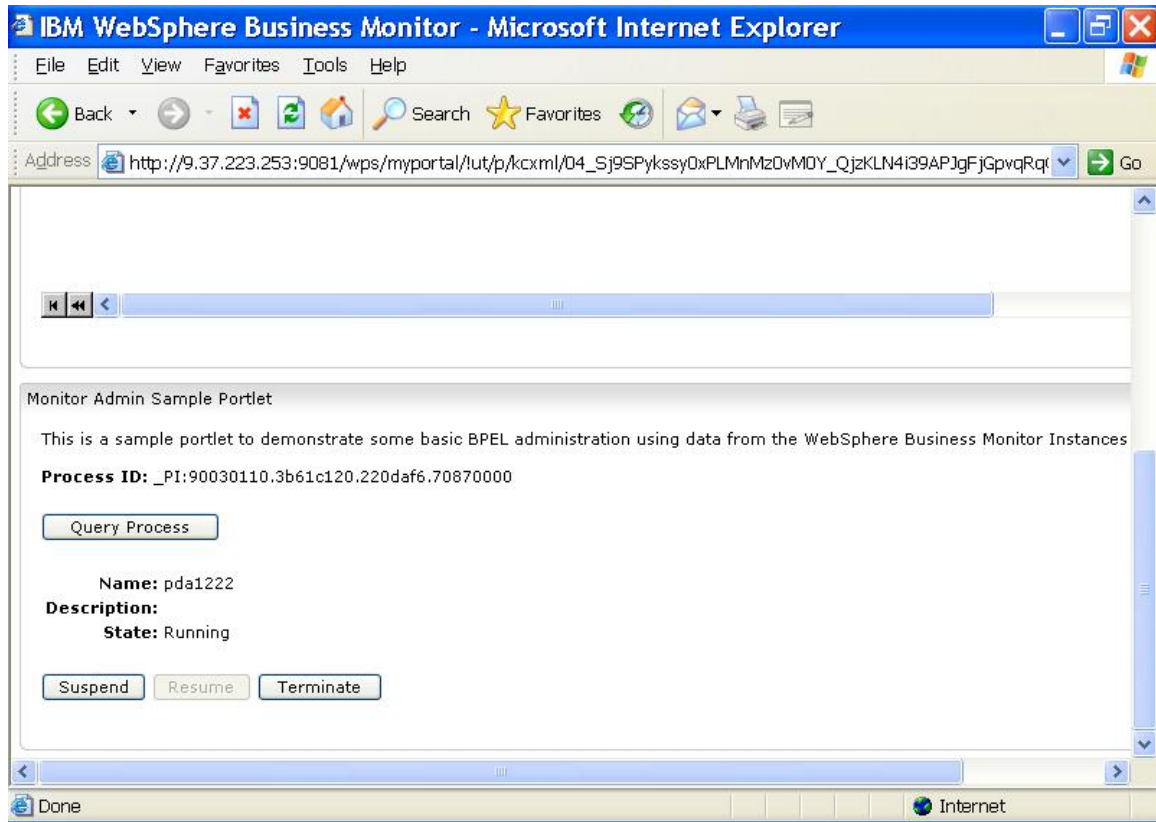
If the status of a WebSphere Process Server process is **Running**, you can click **Suspend** to temporarily pause execution of the WebSphere Process Server process.

Figure 19. Click Suspend to temporarily pause execution



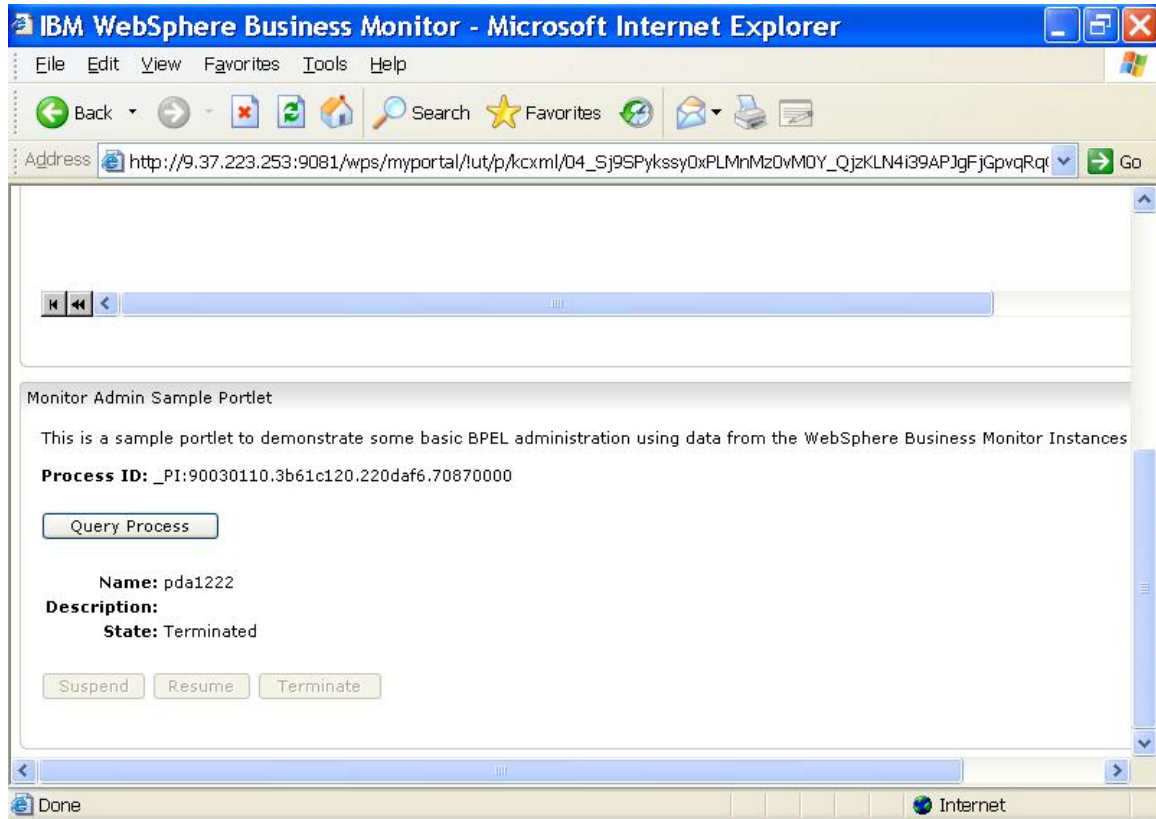
If the status of a WebSphere Process Server process is **Suspended**, you can click **Resume** to resume execution of the WebSphere Process Server process.

Figure 20. Click Resume to resume execution



If the status of a WebSphere Process Server process is **Running** or **Suspended**, you can click **Terminate** to halt execution of the WebSphere Process Server process.

Figure 21. Click Terminate to halt execution



Part 4. Sample Source Files

The source files for the Monitor Admin Sample are included in the Web archive (WAR) file for the sample and can be viewed or modified by importing the file into IBM Rational® Application Developer, V6.

To import the Web archive file, complete the following steps:

- ___ 1. From the **File** menu for Rational Application Developer, select **Import**. The Import window will be displayed.
- ___ 2. Select **File system** as the import source and click **Next**.
- ___ 3. Click **Browse** to specify the directory where the MonitorAdminSample.war file is located.
- ___ 4. Select **MonitorAdminSample.war** from the list of available files.
- ___ 5. For Into folder, type MonitorAdminSample.
- ___ 6. Click **Finish** to import the file. A new project called MonitorAdminSample will be added to your workspace.



© Copyright IBM Corporation 2007

IBM Corporation
Software Group
Route 100
Somers, NY 10589
U.S.A.

Produced in the United States of America
06-07

All Rights Reserved

ALPHABLOX is a registered trademark of Alphablox Corporation in the United States, other countries, or both.

(See this URL for details:

<http://www.ibm.com/legal/copytrade.shtml#section-alphablox>)

Cloudscape, DB2, DB2 Universal Database, IBM, the IBM logo and WebSphere are trademarks of International

Business Machines Corporation in the United States, other countries or both.

Java and all Java-based trademarks are trademarks of Sun Microsystems, Inc. in the United States, other countries, or both.

Microsoft and Windows are trademarks of Microsoft Corporation in the United States, other countries, or both.

Other company, product and service names may be trademarks or service marks of others.