

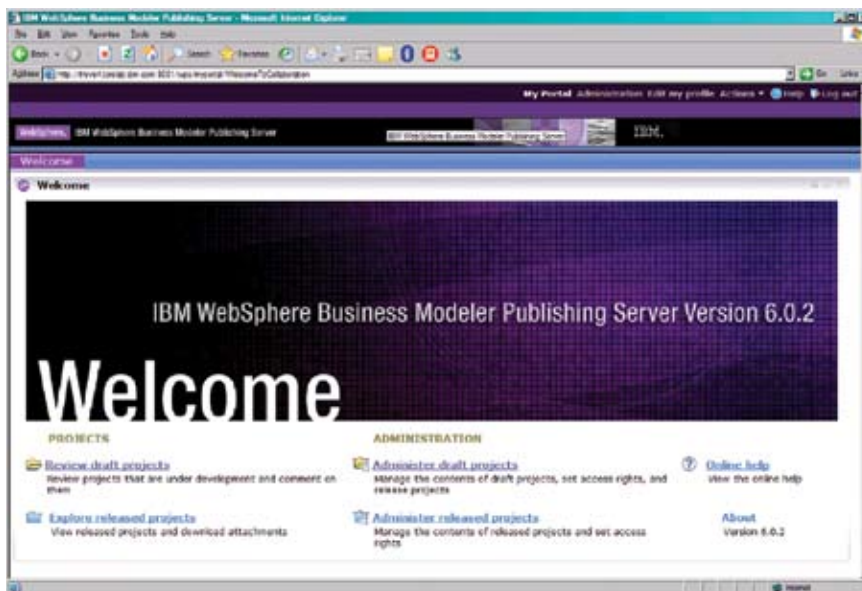
WebSphere. software

IBM WebSphere Business Modeler Publishing Server, Version 6.0.2

Highlights

- **Understand and transform your business through superior business modeling, simulation, analysis and collaboration capabilities**
- **Achieve a best-practices business-model design through collaboration and consensus**
- **Extend the annotator and viewer roles to users who do not have WebSphere Business Modeler installed**
- **Publish models to a Web-based environment for viewing, reviewing and commenting among multiple reviewers, and for storing final versions**
- **Post models to a secure server, which now includes the Linux platform with authorized access through a Web browser**

Market pressure from domestic and global competition is increasing. Also, mergers and acquisitions are requiring business processes to be combined, reviewed and optimized. As a result, the critical resources within your business must work together to develop and deliver best-practices-based business-process models. However, most businesses develop process models in a vacuum, without taking into account the company's business strategy and goals, which means that important steps can be eliminated or development teams can make inaccurate assumptions.



The WebSphere Business Modeler Publishing Server welcome page

A robust family of products to meet your business needs

IBM WebSphere® Business Modeler products are the entry point for the IBM business process management (BPM) portfolio. The product family includes:

- IBM WebSphere Business Modeler Basic, *which delivers an affordable option for business users who want a simple and easy-to-use tool to model, document and print their business processes.*
- IBM WebSphere Business Modeler Advanced, *which provides all the features of WebSphere Business Modeler Basic, as well as complex model-simulation and analysis capabilities. This product also lets IT-focused users export models to multiple build-time environments to help jump-start application development.*

- IBM WebSphere Business Modeler Publishing Server, *which enables you to publish business-process models to a portlet-based server where multiple subject-matter experts can view and review the information simultaneously through a standard Internet browser.*
- WebSphere Business Modeler Publishing Edition, *which offers ten WebSphere Business Modeler Advanced licenses, and one license for WebSphere Business Modeler Publishing Server.*

WebSphere Business Modeler products play a critical role in business-driven development (BDD), which can be defined as an integrated approach to software development that aligns line-of-business (LOB), development and operations teams to improve business performance. With WebSphere Business Modeler, business and IT communities use an Eclipse, Version 3.0 technology-based shared workspace. Well-defined integration points help to maximize productivity by enabling the ability to quickly construct new process-based composite applications using tools such as IBM WebSphere Integration Developer and IBM Rational® Application Developer.

The goal of BPM is continuous improvement and innovation to define strategic goals, and then to measure and manage performance against these goals. You can model, assemble, deploy, monitor and take action — enabling you to make smarter decisions, gain competitive advantage and achieve greater performance results. WebSphere Business Modeler Publishing Server can be a critical component in this equation by helping you to ensure that your business models are completely and accurately defined, and have been reviewed and commented upon by experts in the area, so that suggested improvements get incorporated. This capability facilitates continuous improvement in a controlled and structured fashion. And you can achieve results quickly through the product's collaboration capabilities, which enable subject-matter experts to work together to define business models that accurately represent your business.

New in this release

WebSphere Business Modeler Publishing Server, Version 6.0.2 provides the following new enhancements:

- *The ability to publish business processes created within WebSphere Business Modeler to servers hosted on the Linux® on Intel® platform*
- *Performance improvements for opening draft or released projects, opening draft or released model elements and opening administration pages.*
- *New product documentation for administering the draft and released portals, which describes how to administer user access to projects. You can also administer projects, elements and comments, as well as users and groups.*
- *The ability to add an attachment at the same time that a comment is created, to simplify and expedite the user experience.*
- *The ability to display hyperlinks in published models as Web sites, to enable direct connectivity to the external destination site.*

Publish business processes easily

WebSphere Business Modeler Publishing Server is accessed through the Web using IBM WebSphere Portal technology, providing both personalization and role-based access. Also, the powerful WebSphere Business Modeler Publishing Server review facility enables users to comment on the various aspects of a process model and then store the comments so they are available to the appropriate users, who can then take action based on those comments.

WebSphere Business Modeler creates visual representations of business processes along with supporting information. The more accurate and detailed the information contained in WebSphere Business Modeler, the more accurate the analysis. An important step in modeling the business processes is to validate the process and its data by making the business processes available so that subject-matter experts and other interested parties can review them. WebSphere Business Modeler Publishing Server lets you use WebSphere Business Modeler to

publish an entire business-process modeling project, or just parts of it, to a server. The subject-matter experts and other reviewers can then view the process diagrams and their supporting information using a standard Internet browser. By publishing business processes more widely, you increase the likelihood of the model being accurate and help reduce the risk of a subject-matter expert introducing information that is unique to that user.

A published business process can also serve as a training tool for new employees. The business-process model presents new employees with a high-level view of their role in the company and enables them to clearly identify the tasks they are expected to perform. You can also help identify what the employees need to do in certain conditions, if the model has that level of detail.

Along with viewing business processes, authorized reviewers can use WebSphere Business Modeler Publishing Server to comment on a diagram or on its supporting information. Because the comments are visible and other reviewers can respond to the comments, WebSphere Business Modeler Publishing Server provides a forum for discussing and resolving differences of opinion on a business process. The comments and responses are tracked by originator, and date and time of creation. These comments and responses can then be exported, which permits the modeling team to update the model, making it more accurate.

WebSphere Business Modeler Publishing Server also allows authorized reviewers to post attachments such as Microsoft® Word documents. The attachments

let the reviewer provide the modeling team with additional information that they can use to update the business processes.

Product components

WebSphere Business Modeler Publishing Server has three major components:

- *Publisher*
- *Publishing server*
- *Client*

Publisher

The publisher is a plug-in for WebSphere Business Modeler that takes modeling projects or selected elements from a modeling project and publishes them to the publishing server. The publisher acts as a gateway to the publishing server. The user performing the role of publisher selects which projects or model elements to publish and which publishing server will host the published project. Projects or model elements can be published in an in-progress mode. An administrator can then publish the information into a released mode. Information

published in both modes is displayed with information contained in the advanced mode of WebSphere Business Modeler. This feature is beneficial when working with multiple versions of the business-process models because the correct level of information is shown to users at the right time.

Publishing server

The publishing server hosts published business-modeling projects. The server consists of WebSphere Portal and a database. WebSphere Portal displays the business-process information in four portal windows and another portal for displaying comments. The database stores the comments. The publishing server also has an administration page that allows an authorized user to perform the administration role to define user access, edit and remove business processes, and edit and remove comments.

Client

The client is a standard Microsoft Internet Explorer Internet browser with the Scalable Vector Graphics (SVG) Viewer plug-in. The SVG Viewer enables you to zoom in and out of the process diagrams. To access a published business-process model, the reviewer enters the model's Web site on the publishing server. After the reviewer has logged onto the publishing server, the client displays the portals served by the server. The information displayed by the portals depends on what elements or buttons the reviewer has clicked in any of the portals.

When viewing published business-process models, you can select information through either the navigation portlet or the view portlet, after a process or element has been selected. Then, you can view its

associated attribute information, as well as any comments or responses, or add new comments and responses using the comments portlet. You can also associate other read-only documents or Web sites to model elements in the view portlets to help provide more contextual information about the element.

The right business-process modeling solution

With WebSphere Business Modeler Publishing Server, your business-process development teams can collaborate more effectively, helping to ensure better resource optimization, as well as identifying and eliminating process inefficiencies and errors. And you can use this increased cooperation to enable continuous business-process improvements that can help you achieve greater profitability and increase market share for your business.

For more information

To learn more about IBM WebSphere Business Modeler Publisher Server, Version 6.0.2, contact your IBM representative or IBM Business Partner, or visit:

ibm.com/software/integration/modeler/publishingserver/

To join the Global WebSphere Community, visit:

www.websphere.org



IBM WebSphere Business Modeler Publishing Server, Version 6.0.2 at a glance

Hardware requirements

For Microsoft Windows® and Linux on Intel systems

- Processor: Intel Pentium® 4 at 1.4 GHz or faster
- Memory: 2 GB per processor
- Disk space: 3.9 GB with an additional 750 MB for installation
- Display: minimum 1024 x 768 resolution

Operating system requirements

One of the following:

- Microsoft Windows 2000 Advanced Server with Service Pack (SP) 4
- Windows 2000 Professional with SP4
- Windows 2000 Server with SP4
- Windows 2003 Server with SP2
- Windows XP Professional with SP2
- Red Hat Enterprise Linux, Version 4.0 on Intel (32 bit)
- SUSE Linux Enterprise Server, Version 9 on Intel (32 bit)

Notes:

1. To install, IBM Lotus® Domino® Server, Version 7.0.1 on Red Hat Enterprise Linux, Update 1 or higher is required. If you use Update 1, you might need to run `up2date gdb` to address an issue with `gdb-6.3.0.0-0.31`.
2. To install Lotus Domino Server on SUSE Linux Enterprise Server, Version 9, the kernel must be at level 2.6.5-7.139 or higher and SP1 or higher is required. Also, `gdb 6.3` might be needed on x86 if you experience issues with stacks in `nsd`.

Software requirements

- IBM WebSphere Application Server Network Deployment, Version 6.0 with appropriate maintenance packs
- IBM WebSphere Application Server, Version 6.0 with Fix Pack (FP) 2 with appropriate maintenance packs
- Update Installer for WebSphere Application Server, Version 6.0 releases with appropriate maintenance packs
- IBM WebSphere Portal for Multiplatforms, Version 5.1.0.1 with appropriate fixes
- IBM Lotus Domino Server, Version 7.0.1
- IBM Tivoli® Directory Server, Version 6.0
- WebSphere Application Server Refresh Pack 2 for Windows with FP5
- WebSphere Application Server Refresh Pack 2 for Linux with FP5
- WebSphere Portal Cumulative Fix 3 (to upgrade to WebSphere Portal for Multiplatforms, Version 5.1.0.3)
- Adobe SVG Viewer, Version 3.0, 3.0.1 or 3.0.2
- Java Virtual Machine (JVM), Version 1.5.0 or later
- WebSphere Business Modeler, Version 6.0.1 with Interim Fix 6 or later (required to publish models)

Note: Instead of Tivoli Directory Server, you can use Active Directory for Windows 2003 Server or Active Directory for Windows 2000.

© Copyright IBM Corporation 2007

IBM Corporation
Software Group
Route 100
Somers, NY 10589
U.S.A.

Produced in the United States of America
03-07
All Rights Reserved

Domino, IBM, the IBM logo, Lotus, Rational, Tivoli and WebSphere are trademarks of International Business Machines Corporation in the United States, other countries or both.

Intel and Pentium are trademarks of Intel Corporation in the United States, other countries or both.

Microsoft and Windows are registered trademarks trademark of Microsoft Corporation in the United States, other countries or both.

Linux is a registered trademark of Linus Torvalds in the United States, other countries or both.

Other company, product and service names may be trademarks or service marks of others.