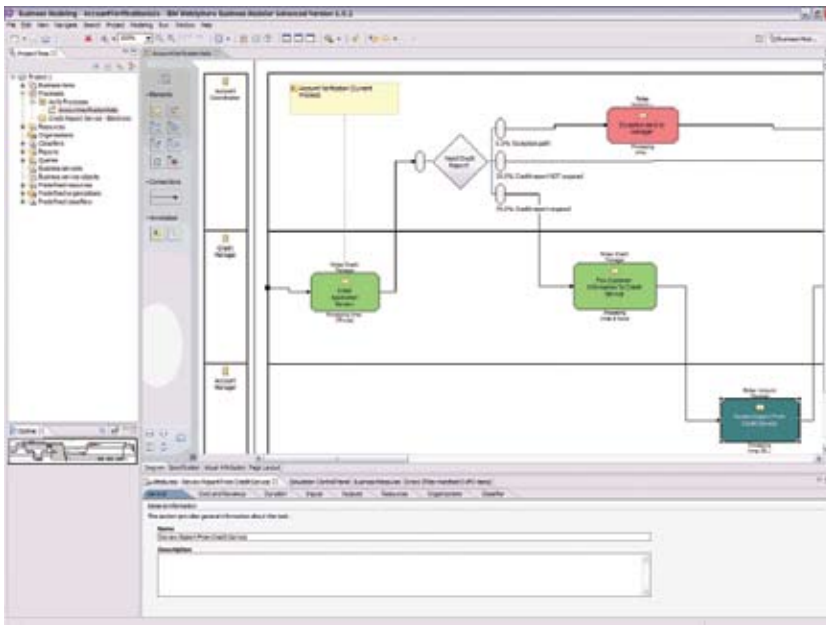


IBM WebSphere Business Modeler, Version 6.0.2

Highlights

- **Enables you to achieve regulatory compliance with less time and expense through well-documented, auditable processes**
- **Helps reduce risk by simulating market changes against current process models**
- **Improves your company's scorecard by defining KPIs**
- **Simulates process changes, and assesses impacts on costs, resource utilization and cycle times prior to deployment**
- **Enables you to more effectively deploy valuable skills to the areas where they're best used**

Creating and maintaining business processes that accurately reflect your organization's business strategy can be a daunting task. Existing business processes can be inflexible and not connected to other business units within your organization, or with critical suppliers and trading partners. Mergers and acquisitions might have left you with a wide range of redundant processes— affecting operating efficiency, productivity and your company's bottom line.



As an important step toward achieving your business goals, your ability to effectively optimize business processes can help your organization become more flexible and responsive to changing business conditions— while helping to reduce your total cost of ownership (TCO). And implementing business process management (BPM) through a service oriented architecture (SOA) can help you achieve your critical business goals even more quickly.

WebSphere Business Modeler software provides robust process-simulation capabilities to help you build concise and accurate businesses processes.

Helping you reduce the complexity, time and cost to develop business processes

IBM WebSphere® Business Modeler, Version 6.0.2 products can help you fully visualize, comprehend and document your organization's business processes. Collaboration capabilities help you achieve quick results by enabling subject-matter experts to work together to clearly define business models and eliminate inefficiencies. You can model, assemble and deploy business processes, then monitor and take actions based on key performance indicators (KPIs), alerts and triggers to continually optimize these processes. By using WebSphere Business Modeler software, you can tightly link business processes with your strategic corporate objectives and hone them as required.

WebSphere Business Modeler products are the entry point for the IBM BPM portfolio, and include:

- IBM WebSphere Business Modeler Basic, *designed to provide an affordable, easy-to-use tool for business users to model, document and print business processes.*
- IBM WebSphere Business Modeler Advanced, *designed to provide all the features of WebSphere Business Modeler Basic, along with complex model simulation and analysis capabilities. With this product, IT users can export models to multiple build-time environments to help jump-start application development.*

- IBM WebSphere Business Modeler Publishing Server, *designed to enable users to publish business-process models to a portlet-based server, so that multiple subject-matter experts can review the information simultaneously through a standard Internet browser.*
- IBM WebSphere Business Modeler Publishing Edition, *an offering that consists of 10 WebSphere Business Modeler Advanced licenses, along with one WebSphere Business Modeler Publishing Server license.*

Model, validate and document business processes affordably

WebSphere Business Modeler Basic software is designed to be an affordable entry edition that provides basic modeling capabilities to capture data. You can use WebSphere Business Modeler Basic to model, validate and document business processes. Three modeling modes in WebSphere Business Modeler Basic—basic, intermediate and advanced—enable you to determine the level of detail displayed in diagrams, dialogs and wizards, giving you a choice as to how much of this information you want to be visual. WebSphere Business Modeler Basic also includes a reporting tool and a complete set of static documentation reports. These reports provide an easy way to present the information contained within the model, so that you can quickly use the reports without having to first develop them.

Take advantage of the full function of WebSphere Business Modeler Advanced

WebSphere Business Modeler Advanced software includes all of the capabilities of WebSphere Business Modeler Basic, as well as simulation, analysis and redesign capabilities. With WebSphere Business Modeler Advanced, you can further bridge the gap between your IT assets and your business goals by taking advantage of the product's robust functionality for business-process analysis, and process, enterprise, essential data and artifact, organization, resource, timeline and location modeling. Besides the three modes available with WebSphere Business Modeler Basic, WebSphere Business Modeler Advanced also includes a mode for Business Process Execution Language (BPEL) for either the IBM WebSphere Business Integration Server Foundation or the IBM WebSphere Process Server run time, and a mode for IBM WebSphere MQ Workflow Flow Definition Language (FDL). BPEL and FDL compatibility enable you to work in the mode in which you plan to deploy the process.

With this release, the business-measures editor in WebSphere Business Modeler Advanced has been replaced with an easier-to-use interface that enables business users to more quickly and easily define KPIs and business measures associated with their processes. This new component, targeted specifically at business users, enables them to efficiently define all the business-level information needed to describe their monitoring needs, based on their business objectives. This information includes the name, description, and targets and ranges of the KPI or metric, as well as how the resulting monitored information should be visualized in the dashboard views of IBM WebSphere Business Monitor.

The more-complex and technical tasks that are typically performed by more-technical users, such as specifying KPI calculations and expressions, and deploying the business measure model on a run time, have been removed from WebSphere Business Modeler Advanced, and are now delivered as part of the new business-measures tools for WebSphere Business Monitor, Version 6.0.2.

WebSphere Business Modeler Advanced, Version 6.0.2 and WebSphere Business Modeler Basic, Version 6.0.2 provide a number of process-modeling enhancements, including the ability for users to perform the following actions:

- *Copy and paste parts of WebSphere Business Modeler process diagrams into other tools, such as Microsoft® Powerpoint and Microsoft Word*
- *Publish process models in selected swimlane formats to WebSphere Business Modeler Publishing Server, Version 6.0.2*
- *Import business services (Web Services Description Language [WSDL]) and business objects (XML Schema Definition [XSD]), for improving the SOA life cycle*
- *Scroll when selecting multiple elements using a marquee-selection tool*
- *Reorder input and output branches of decisions, merges, joins and forks, as can be currently done for tasks*
- *Search for model elements by name and by description*

WebSphere Business Modeler Advanced, Version 6.0.2 and WebSphere Business Modeler Basic, Version 6.0.2 include the following enhancements to their reporting and printing features:

- *The ability to define and apply a header and footer master to one or more report templates*
- *A new data formatter for date, duration, currency, integers, doubles, percentage, Boolean (globalize and localize) content, so that, for example, “2006-03-23T12:00:00-05:00” converts to “March 23, 2006, 12:00 EST”*
- *The ability to define global parameters to multiple reports, such as a company name or logo*
- *The ability to sort fields in the report designer by ascending or descending order, to produce structured reports*
- *The ability to export profile and dynamic analysis reports in XML format, for use with other tools*

WebSphere Business Modeler Advanced, Version 6.0.2 also provides enhancements to its simulation and dynamic-analysis capabilities, including:

- *New animation support available when simulating models in swimlane format.*
- *Enhanced simulation validation through the auto-detection of missing stop nodes during simulation snapshot-creation time, and the reporting of any encountered errors in the error view.*
- *The addition of working and resource-duration attributes to the “process-instance summary” and the “process-instance time” dynamic-analysis reports.*

WebSphere Business Modeler Advanced offers a flexible, visual-process-modeling environment that is enhanced by the ability to color-code elements according to role, classification or organization units. Along with the name, you can also add labels to the top and bottom of an object—and customize a model so that the appropriate labels can be displayed at the appropriate time. WebSphere Business Modeler Advanced also includes a “swimlane” view that you can use to display a model according to role, resource, organization unit and classifier. You can also edit a model in the swimlane view.

The WebSphere Business Modeler Advanced simulation engine enables you to simulate the dynamic behavior of your process, so that you can analyze workloads and bottlenecks. By using the simulation engine, you can determine the most-efficient model before you implement the process. You can view analysis on the process, resources, activity and queue during the simulation or after the simulation is complete. WebSphere Business Modeler Advanced animates the flows in a step-by-step simulation that enables you to see real-time data. You can move from the modeling phase to the simulation phase by entering metric information (such as costs and time) into the model while it is modeled in the process editor.

WebSphere Business Modeler Advanced also includes capabilities to add and view simulation attributes in a table format, helping to simplify the steps for inserting attributes and running a simulation. Distributions, including Weibull, Continuous, Beta, Erlang, Johnson and Triangular, support more-statistical types of analyses, which are applicable across industries. To support these large simulations and complex distributions, WebSphere Business Modeler Advanced includes usability and performance enhancements so that you can obtain simulation results faster

and store them in a relational database. WebSphere Business Modeler Advanced also now has the ability to generate multiple instances of a single resource to faster simulate resource utilization within a business process.

The WebSphere Business Modeler Advanced report builder can automatically create written, numerical and graphical reports. These reports provide valuable guidance in process analysis and redesign, and deliver a detailed weighted-average analysis to validate and optimize the processes that you’ve defined. You can improve your business by understanding the time and cost performance of your processes. If you need a customized report, the report builder can help you generate it. Or you can publish models to the Web using WebSphere Business Modeler Publishing Server. Then, subject-matter experts can collaborate by viewing and commenting upon these models using a standard Web browser. Integration with Crystal reports enables you to combine business-process information with other critical reports or supporting documentation that is relevant to a particular process.

After you have built, simulated, analyzed and corrected your processes, you can deploy them to WebSphere Process Server through BPEL, WSDL and XSDs. WebSphere Business Modeler Advanced can export models to the IBM WebSphere Integration Developer tooling environment by generating service-component architecture (SCA) components, modules and Task Execution Language (TEL) for human tasks.

WebSphere Business Modeler Advanced also includes the ability to generate business-measures models using the business measures editor. This feature enables WebSphere Business Modeler Advanced to support WebSphere Business Monitor software by allowing you to take a snapshot of a modeled process and update it with KPI and metric information. You can also define situations that enable WebSphere Business Monitor to determine that a situation has occurred and an action must be taken. For example, an alert can be triggered when an order exceeds a threshold, or a certain customer order needs special handling. Or, if a process is taking too long and is exceeding your service-level agreement (SLA), a manager can receive an e-mail alert, notifying him or her to address the area that is causing the bottleneck.

Publish business processes created within WebSphere Business Modeler

WebSphere Business Modeler Publishing Server enables you to publish business processes created within WebSphere Business Modeler. Then, authorized users can view and comment on the business processes using a standard Web browser. By more widely publishing business processes, you can increase the accuracy of the model and help reduce the risk of a particular subject-matter expert introducing information that isn't universally relevant. A published business process can also serve as a training tool for new employees. The business-process model can provide new employees with a high-level view of their roles in the company and clearly identify the tasks that they are expected to perform.

Besides viewing business processes, authorized reviewers can use WebSphere Business Modeler Publishing Server to comment on a diagram or on its supporting information. Because the comments are visible and other reviewers can respond to the comments, WebSphere Business Modeler Publishing Server provides a forum for discussing and resolving issues related to developing a business process. The comments and responses are tracked by originator, and date and time of creation. Users can then export these comments and responses to permit the modeling team to update the model, making it more accurate.

WebSphere Business Modeler Publishing Server comprises three major components:

- *Publisher, which acts as a gateway to the publishing server*
- *Publishing server, which hosts published business-modeling projects*
- *Client, which is a standard Web browser with the Scalable Vector Graphics (SVG) Viewer plug-in, enabling you to zoom in and out of process diagrams*

Optimize collaboration to create effective business processes

Whether you are establishing business-process modeling as a core competency or expanding your business-modeling environment, WebSphere Business Modeler Publishing Edition enables team collaboration in the publishing and review of business-process models. This packaged offering includes one license for WebSphere Business Modeler Publishing Server and 10 licenses for WebSphere Business Modeler Advanced. With WebSphere Business Modeler Publishing Edition, subject-matter experts can help ensure process-model accuracy while facilitating communication and participation across your organization.

Delivering on the SOA promise

Business processes have life cycles that are driven by business goals and implemented by IT. As a result, you have to align IT processes that span your entire organization with your business goals. However, you might be dealing with an IT infrastructure that comprises a wide range of applications and technologies—each designed to address specific business and IT challenges. An SOA and composite-application development environment enable you to solve this problem by using existing IT resources as services that you can rapidly assemble to create business-process flows.

The strength of an SOA depends on the extent to which it can help you use your existing IT infrastructure to meet your business objectives. An effective SOA should:

- *Take into account the complete life cycle of business processes to help ensure that IT aligns with the business.*
- *Render existing IT artifacts as consumable services.*
- *Manage services to enable efficiency and reuse.*

Together with IBM WebSphere Process Server, IBM WebSphere Integration Developer, IBM Rational® Application Developer and WebSphere Business Monitor, WebSphere Business Modeler delivers a comprehensive SOA offering that completes the life cycle of business processes.

For more information

WebSphere Business Modeler software provides best-in-class business-modeling and simulation capabilities that you can use to help you run your business more effectively—as well helping to reduce operating costs. With WebSphere Business Modeler software, you can take advantage of easy-to-learn and easy-to-use integration capabilities to help improve productivity across your enterprise. You can more clearly define and visualize what the core activities are, and use this information to deliver the flexibility you need to capitalize on market opportunities that can help you stay ahead of the competition.

To learn more about IBM WebSphere Business Modeler, Version 6.0.2, contact your IBM representative or IBM Business Partner, or visit:

ibm.com/software/integration/wbimodeler

To join the IBM WebSphere Global Community, visit:

www.websphere.org

IBM WebSphere Business Modeler Basic, Version 6.0.2 at a glance

Hardware requirements

- Processor: Intel® Pentium® III at 500 MHz or faster
- Memory: 768 MB minimum (1 GB recommended)
- Disk space: 900 MB required for installation and additional user files
- Display resolution: 1024 x 768 minimum

Software requirements

Operating systems (one of the following)

- Microsoft® Windows® XP with Service Pack (SP) 2
- Windows 2000 with SP4 or later

To install and run WebSphere Business Modeler Basic as a plug-in (one of the following)

- WebSphere Integration Developer, Version 6.0.2
- IBM Rational Software Architect, Version 6.0.1
- Rational Application Developer, Version 6.0.1
- IBM Rational Software Modeler, Version 6.0.1
- IBM Rational Web Developer, Version 6.0.1

Notes:

- To use the product-versioning function, you must have network access to a Concurrent Version System (CVS) or IBM Rational ClearCase® server.
- CVS server support is provided for CVS, Version 1.11.1p1 or later, running on a Linux® or UNIX® server and CVSNT, Version 2.0.58d or later, when properly configured. For more information, visit www.nongnu.org/cvs/.
- Rational ClearCase, Version 2003.06.15 is supported for the Windows operating system.

For the latest hardware and software requirements for IBM WebSphere Business Modeler Basic, Version 6.0, visit ibm.com/software/integration/wbimodeler/entry/sysreq/.

IBM WebSphere Business Modeler Advanced, Version 6.0.2 at a glance

Hardware requirements

- Processor: Intel Pentium III at 500 MHz or faster
- Memory: 1 GB minimum (2 GB recommended)
- Disk space: 900 MB required for installation and additional user files
- Display resolution: 1024 x 768 minimum

Software requirements

Operating systems (one of the following)

- Windows XP with SP2 or later
- Windows 2000 with SP4 or later
- Rational ClearCase, Version 2003.06.15 is supported for the Windows operating system.

To install and run WebSphere Business Modeler Advanced as a plug-in (one of the following)

- WebSphere Integration Developer, Version 6.0.2
- Rational Software Architect, Version 6.0.1
- Rational Application Developer, Version 6.0.1
- Rational Software Modeler, Version 6.0.1
- Rational Web Developer, Version 6.0.1

Notes:

- To use the product-versioning function, you must have network access to a CVS and Rational ClearCase server.
- CVS server support is provided for CVS, Version 1.11.1p1 or later, running on a Linux or UNIX server and CVSNT, Version 2.0.58d or later, when properly configured. For more information, visit www.nongnu.org/cvs/.

For the latest hardware and software requirements for IBM WebSphere Business Modeler Advanced, Version 6.0, visit ibm.com/software/integration/wbimodeler/advanced/sysreq/.



© Copyright IBM Corporation 2007

IBM Corporation
Software Group
Route 100
Somers, NY 10589
U.S.A.

Produced in the United States of America
03-07
All Rights Reserved

ClearCase, IBM, the IBM logo, Rational and WebSphere are trademarks of International Business Machines Corporation in the United States, other countries or both.

Intel and Pentium are trademarks of Intel Corporation in the United States, other countries or both.

Microsoft and Windows are trademarks of Microsoft Corporation in the United States, other countries or both.

UNIX is a trademark of The Open Group in the United States, other countries or both.

Linux is a trademark of Linus Torvalds in the United States, other countries or both.

Other company, product or service names may be trademarks or service marks of others.

This publication provides address to non-IBM Web sites. IBM is not responsible for the content on such sites.