



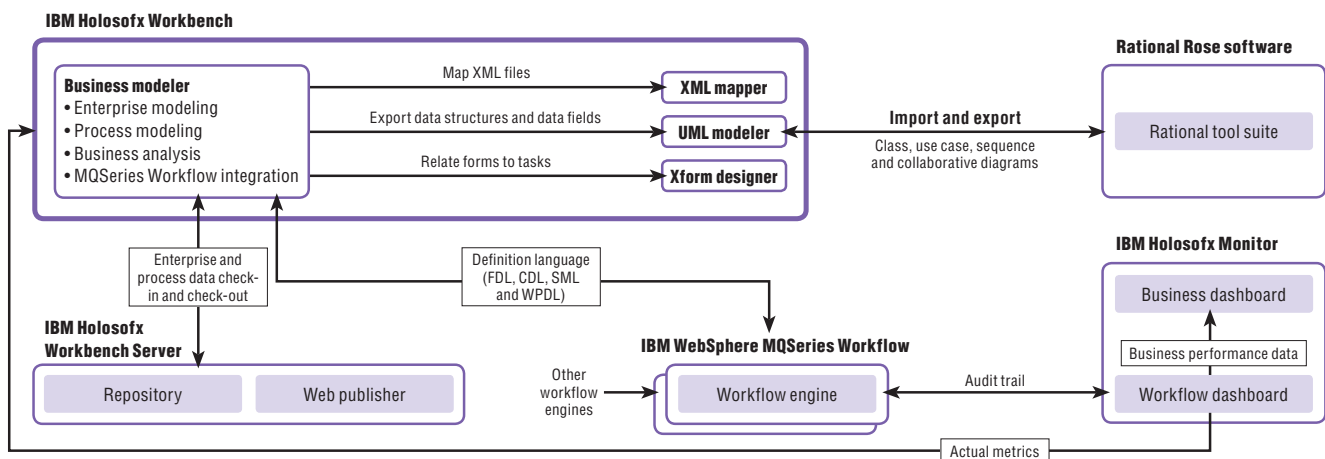
WebSphere® software

IBM Holosofx Workbench, Version 4.2.2

Highlights

- **Captures important business process and guidelines in one place for easy reference and companywide consistency**
- **Generates process performance metrics with more than 50 available reports or can export data to other software for customized reporting**
- **Helps model diagrams of current and new business processes with drag-and-drop capabilities and a simplified graphical interface**
- **Delivers facets and functions of business process analysis and business process engineering in one complete business process management (BPM) solution**
- **Optimizes business outcomes by running scenarios to simulate processes before implementation**
- **Exports business process definitions to be automated with IBM MQSeries Workflow**

Mapping your enterprise's business processes can be a daunting task. Communicating those processes and all they involve can be even more challenging. And when you're ready to automate your business processes, the inability to communicate your IT requirements for automation can derail the initiative up front. IBM Holosofx Workbench, Version 4.2.2 now provides line-of-business professionals with easy-to-use tools to design, test and communicate complex business processes. Simulate your processes' operational efficiency and analyze potential business results—all before committing resources to development and deployment.



IBM Holosofx tools integrate tightly with WebSphere Business Integration software to facilitate effective business process management and monitoring for greater control and informed decision making.

Redesign and simulate your processes and outcomes

IBM Holosofox Workbench lets you to visualize your business processes and validate them before automation. Capture, analyze and redesign your company’s business processes in activity decision flow (ADF) diagrams that you can easily manage with an intuitive graphical user interface (GUI). View how processes will actually perform by simulating different business scenarios to test the range of possible outcomes before implementation. And document your process models with more than 50 included reports to fully illustrate process potential.

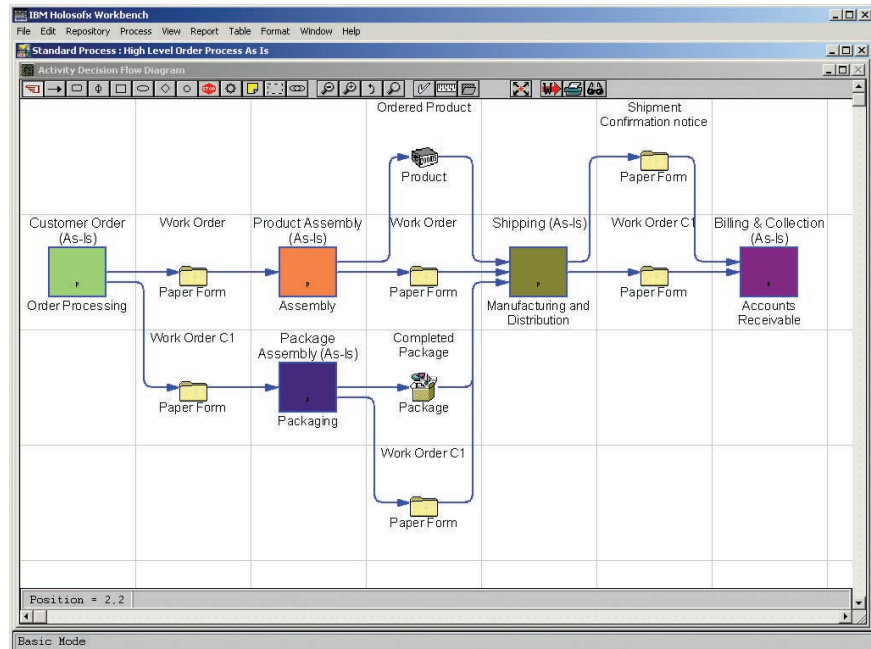
Create and validate with full process-modeling capabilities

IBM Holosofox Workbench offers a full range of business process-modeling capabilities, from creation of process flow diagrams to validation of process outcomes. Holosofox Workbench is built on four components, each providing useful options for enterprise information management.

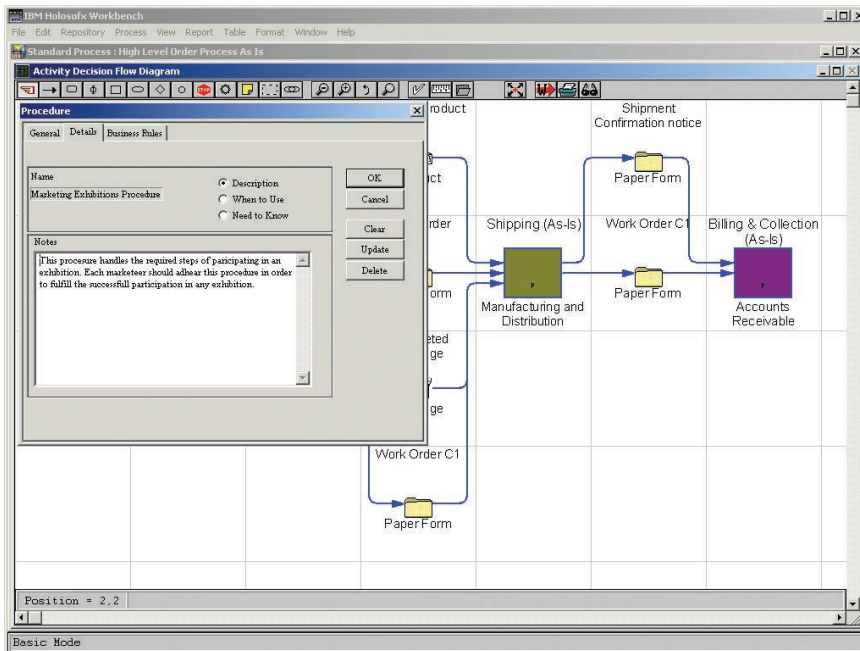
Business modeler

The business modeler component of IBM Holosofox Workbench allows users to design business process models using intuitive drag-and-drop technology. Faster and more flexible than drawing, Holosofox Workbench process-modeling functions translate an organization of complex business processes into logical and easy-to-follow flow diagrams. Holosofox Workbench supports cascading detail levels within business processes—from high-level summaries down to specific tasks, roles and dependencies.

Additional enterprise-modeling capabilities provide a repository for company policies, procedures, business rules and other important enterprise information—in one place for easy accessibility and enterprise-wide consistency. Linking this information to your business processes is vital for creating an accurate representation of all the factors that shape each process outcome. You can identify the important rules and other guidelines—such as policies, business goals and legal considerations—that affect your process performance to help gauge your company’s readiness for process automation.



Convert complex business processes into easy-to-use flow diagrams.



Capture and review details for all steps with your outlined business processes.

The Holosofx Workbench business modeler component also provides dynamic analytical tools for optimal business process modeling. After processes are captured within Holosofx Workbench, you can simulate process performance under varying environmental factors, such as time and cost. Identify the right solution for your current business environment by projecting outcomes before implementation. You can quickly adjust processes with confidence when

business factors change in the future. IBM Holosofx Workbench produces process metrics for analysis in multiple chart types, with export capabilities to spreadsheet applications for additional data management options.

UML modeler

The IBM Holosofx Workbench Unified Modeling Language (UML) modeler component bridges the gap between business users and IT professionals. The UML modeler conveniently exports UML output into rapid-development

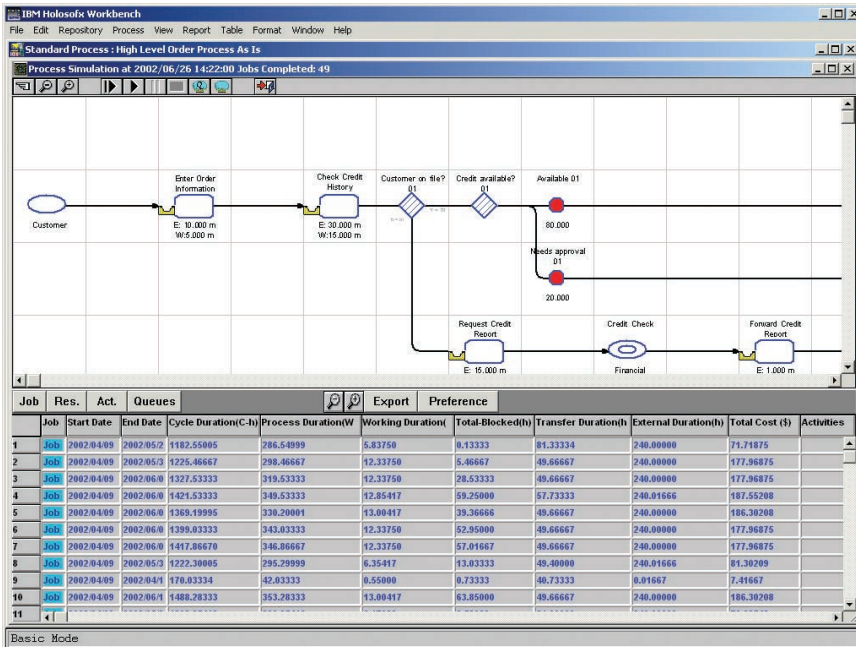
tools, such as Rational Rose software, for extended data use and flexibility. Object models generated by the Rational Rose visual modeling tool can also be imported into the UML modeler.

Xform designer

The IBM Holosofx Workbench Xform designer component places the capacity of customized workplace design in the hands of the everyday business user. Holosofx Workbench users can quickly design GUIs to meet specific enterprise needs, then provide screen mockups of new interfaces and forms to illustrate IT requirements. Interface design mockups can also be converted to Extensible Markup Language (XML) for use in other software development applications.

XML mapper

The IBM Holosofx Workbench XML mapper is an application that converts data to tags that enable data exchange between systems and applications. The XML mapper component eliminates the need to write new programs that translate to multiple data formats.



Simulate actual process performance using different business variables, then generate reports to identify your optimal outcomes.

WebSphere MQSeries and Holosofx software—an integrated BPM solution

Combine IBM Holosofx Workbench with IBM Holosofx Workbench Server, IBM Holosofx Monitor and IBM MQSeries® Workflow for a full-spectrum BPM solution. Holosofx Workbench integrates with MQSeries Workflow, generating Flow Definition Language (FDL) to enable immediate business process automation. And IBM offers inclusive licensing of

Holosofx Workbench Server and Holosofx Workbench to combine the products' modeling and deployment capabilities.¹

WebSphere business integration

As the speed of business increases, so do the challenges your enterprise will address. Managing disparate internal systems. Utilizing your workforce most effectively. Improving operational efficiency.

WebSphere Business Integration products extend high performance, reliability and scalability to connect applications that share and leverage information. Combining process integration and connectivity into a single offering, these products allow you to decide which software is the best solution for your particular business need. WebSphere Business Integration products enable you to change how your business operates through modeling, automating and monitoring business processes—across people and systems, inside and outside of your enterprise.

As a result, you can unify information and streamline business processes to eliminate operational inefficiencies while solidifying the relationships they support.

IBM Holosofx products are part of the WebSphere Business Integration line of products, providing the modeling and monitoring capabilities needed to help drive your e-business success. As business requirements change, you can quickly assess and implement process changes to help optimize your e-business performance—and deliver more value from existing systems.

IBM Holosofx Workbench, Version 4.2.2 at a glance

Hardware requirements

- Intel® Pentium® III, 650MHz or higher
- 64MB RAM for Microsoft® Windows® 95, Windows 98, Windows NT® (128MB RAM for Windows 2000, recommended)
- 120MB available hard disk drive space, minimum (60MB for installation; 60MB for operation)

Software requirements

- Microsoft Windows 95, Windows 98, Windows NT or Windows 2000
-

For more information

To learn more about WebSphere
Business Integration and IBM Holosofx
Workbench, Holosofx Workbench
Server and Holosofx Monitor, visit:

ibm.com/websphere/integration/
holosofx



© Copyright IBM Corporation 2002

IBM Corporation
Software Group
Route 100
Somers, NY 10589
U.S.A.

Produced in the United States of America
11-02
All Rights Reserved

The e-business logo, IBM, the IBM logo,
MQSeries and WebSphere are trademarks or
registered trademarks of International Business
Machines Corporation in the United States,
other countries or both.

Intel and Pentium are trademarks of Intel
Corporation in the United States, other countries
or both.

Microsoft, Windows and Windows NT are
trademarks of Microsoft Corporation in the
United States, other countries or both.

¹ Passport Advantage required.

Other company, product and service names
may be trademarks or service marks of others.