

Quick Start Guide

Get started installing and configuring IBM Business Process Manager Advanced

National Language Version: To obtain the Quick Start Guide in other languages, print the language-specific PDF from the Quick Start Guide DVD.

Product overview

IBM® Business Process Manager Advanced is a comprehensive process and case management platform that helps you manage your business processes and cases. It includes tools and runtime environments that help you design, run, monitor, and optimize your business processes and cases.

1 Step 1: Access the software and documentation



If you downloaded the product from IBM Passport Advantage®, follow the directions in the download document:

- For AIX® (<http://www.ibm.com/support/docview.wss?uid=swg24038622>)
- For Linux (<http://www.ibm.com/support/docview.wss?uid=swg24038621>)
- For Solaris (<http://www.ibm.com/support/docview.wss?uid=swg24038620>)
- For Windows (<http://www.ibm.com/support/docview.wss?uid=swg24038619>)

This product offering includes the following components:

- Quick Start Guide DVD
- IBM BPM Advanced V8.5.6, including IBM Installation Manager V1.8.1, and IBM DB2® Express Edition V10.1
- IBM WebSphere® Application Server Network Deployment V8.5.5.5, including IBM WebSphere SDK Java™ Technology Edition V7.0, and IBM WebSphere SDK Java Technology Edition V7.1
- IBM Process Federation Server V8.5.6, including IBM Installation Manager V1.8.1, IBM WebSphere Application Server Liberty Network Deployment V8.5.5.5, and IBM WebSphere SDK Java Technology Edition Version 7.0 for Liberty
- IBM DB2 Enterprise Server Edition V10.5
- IBM DB2 Workgroup Server Edition V10.5
- IBM Tivoli® Directory Server V6.3
- IBM Tivoli Access Manager for e-Business V6.1.1
- IBM MobileFirst Platform Foundation V6.3

Some of these components are optional. For product components, available configurations, and installation instructions, see the IBM BPM V8.5.6 documentation (http://www.ibm.com/support/knowledgecenter/SSFPJS_8.5.6/).

For additional documentation, see the IBM Business Process Manager library (<http://www.ibm.com/software/integration/business-process-manager/library/documentation>).

2 Step 2: Evaluate the hardware and system configuration

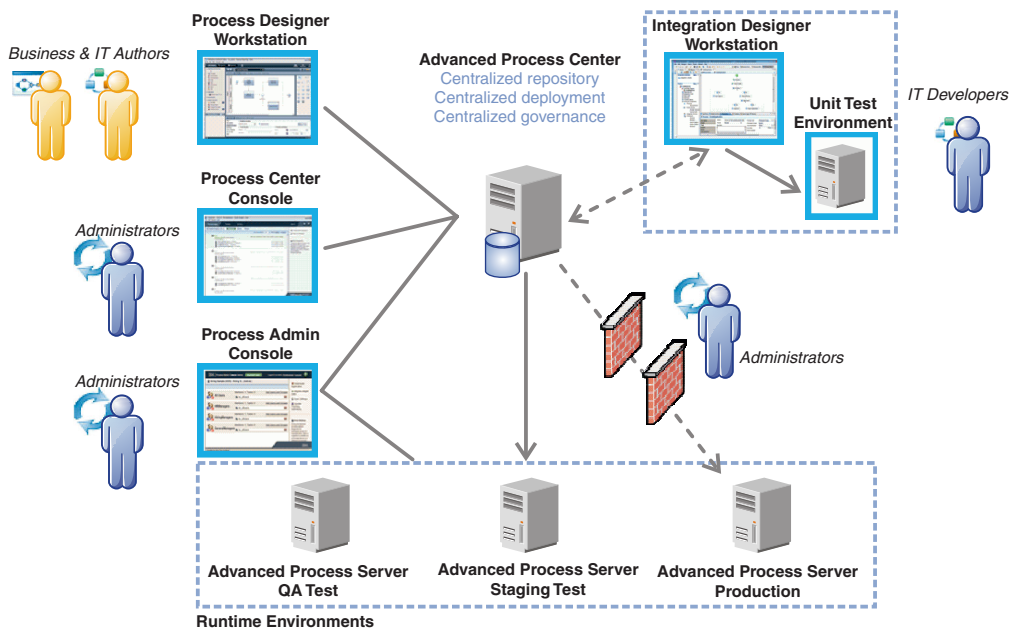


You can use IBM BPM in many different configurations. For more information, see the Planning for IBM Business Process Manager (http://www.ibm.com/support/knowledgecenter/SSFPJS_8.5.6/com.ibm.wbpm.imuc.doc/topics/cpln_bpm.html) documentation section. Review the product license to ensure that you have the necessary authorizations to support your topology and that you understand the usage restrictions for all software components that are included with the product.

For the system requirements, see the detailed system requirements for the IBM Business Process Manager Advanced product (<http://www.ibm.com/software/reports/compatibility/clarity/softwareReqsForProduct.html>).

3 Step 3: Review the installation architecture

The following illustration shows the IBM BPM Advanced components that are installed across multiple systems in a common topology, known as a network deployment configuration. At the center is the IBM Advanced Process Center, where all the development activities occur. The authoring tools, the administrative consoles, and the IBM Advanced Process Servers for development, test, staging, and production are connected to the Advanced Process Center.



For more information about the components and user role interactions, see the IBM BPM V8.5.6 documentation (http://www.ibm.com/support/knowledgecenter/SSFPJS_8.5.6/).

4 Step 4: Install IBM BPM Advanced



To create a network deployment topology by using the DB2 Express Edition database, complete the following steps for a typical installation:

1. Obtain the compressed files from the DVDs or from the downloaded images, and then extract all the files from the compressed files to the same location on your hard disk. You might be prompted to overwrite directories.
2. Start the launchpad file and, from the launchpad, select **using the typical installer**.
3. Select **Install Process Center** or **Install Process Server**, and then click **Next**.
4. Verify the information on the next panel, including the location for the installation, and click **Next**.
5. Install an embedded DB2 Express Edition database. If you already have DB2 installed, you are prompted to install the product using the existing database. Click **Next**.
6. Read and accept the license agreement, and then click **Install Software** to begin your installation. While the software is being installed, you can view and print information about the installation.

When the installation is complete, the Quick Start console starts automatically.

For custom installations, select **using the custom installer** on the launchpad. IBM Installation Manager starts. For detailed installation steps, see the IBM BPM Interactive Installation and Configuration Guide (http://www.ibm.com/support/knowledgecenter/SSFPJS_8.5.6/com.ibm.wbpm.imuc.doc/topics/bpm_roadmap_form.html).

More information



For additional resources, see the following links:

- IBM Education Assistant (<http://publib.boulder.ibm.com/infocenter/ieduasst/v1r1m0/>)
- IBM developerWorks® Business Process Management zone (<http://www.ibm.com/developerworks/bpm/>)
- Support information (http://www.ibm.com/support/entry/portal/Overview/Software/WebSphere/IBM_Business_Process_Manager_Advanced)

IBM Business Process Manager Advanced V8.5.6 Licensed Materials - Property of IBM. © Copyright IBM Corp. 2000, 2015. U.S. Government Users Restricted Rights - Use, duplication or disclosure restricted by GSA ADP Schedule Contract with IBM Corp.

IBM, the IBM logo, ibm.com, AIX, DB2, developerWorks, Passport Advantage, Tivoli, and WebSphere are trademarks or registered trademarks of International Business Machines Corp., registered in many jurisdictions worldwide. Linux is a registered trademark of Linus Torvalds in the United States, other countries, or both. Java and all Java-based trademarks and logos are trademarks or registered trademarks of Oracle and/or its affiliates. Windows is a trademark of Microsoft Corporation in the United States, other countries, or both. Other product and service names might be trademarks of IBM or other companies. A current list of IBM trademarks is available on the web at "Copyright and trademark information" (www.ibm.com/legal/copytrade.shtml).

Part Number: CF4ADML



Printed in Ireland