

Quick Start Guide

Get started installing and configuring IBM Business Process Manager Advanced V8.5.5

National Language Version: To obtain the Quick Start Guide in other languages, print the language-specific PDF from the Quick Start Guide CD.

Product overview

IBM® Business Process Manager (BPM) Advanced is a comprehensive process and case management platform that helps you manage your business processes and cases. It includes tools and runtime environments that help you design, run, monitor, and optimize your business processes and cases.

1 Step 1: Access the software and documentation



If you downloaded the product from IBM Passport Advantage®, follow the directions in the download document (<http://www.ibm.com/support/docview.wss?uid=swg24037158>).

This product offering includes the following components:

- Quick Start Guide CD
- IBM BPM Advanced V8.5.5, including IBM Installation Manager V1.7.2 and IBM DB2® Express Edition V10.1
- IBM WebSphere® Application Server Network Deployment V8.5.5.2
- IBM DB2 Enterprise Server Edition V10.5
- IBM DB2 Workgroup Server Edition V10.5
- IBM Tivoli® Directory Server V6.3
- IBM Tivoli Access Manager for e-Business V6.1.1
- IBM Worklight® V6.1

Some of these components are optional. For product components, available configurations, and installation instructions, see the IBM BPM V8.5.5 documentation (http://www.ibm.com/support/knowledgecenter/SSFPJS_8.5.5/).

For complete documentation, see the IBM Business Process Manager library (<http://www.ibm.com/software/integration/business-process-manager/library/documentation>).

2 Step 2: Evaluate the hardware and system configuration

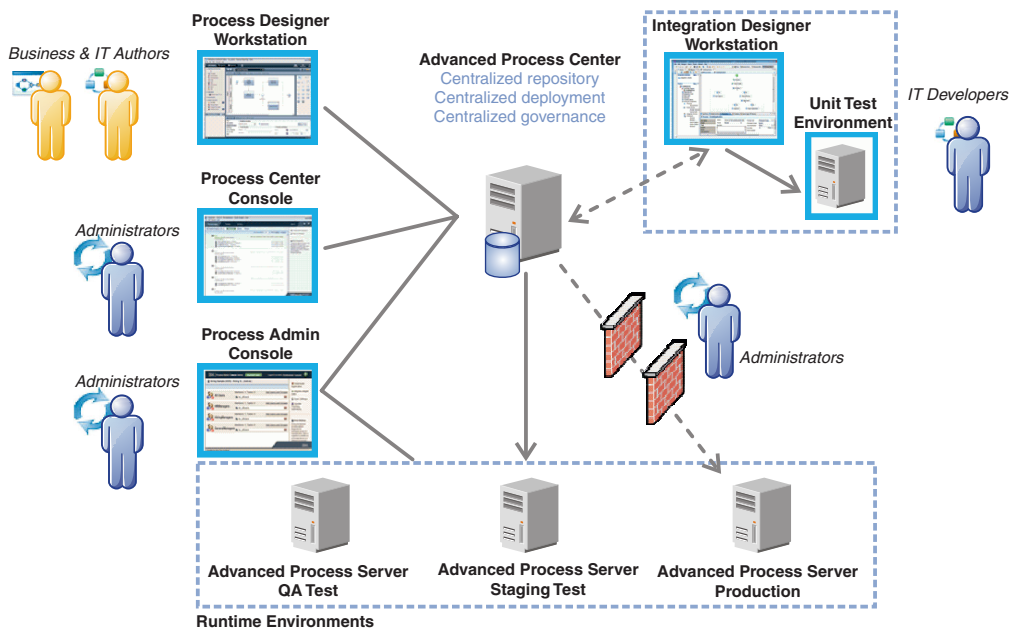


You can use IBM BPM in many different configurations. For more information, see *Planning for IBM Business Process Manager* in the IBM BPM V8.5.5 documentation (http://www.ibm.com/support/knowledgecenter/SSFPJS_8.5.5/). Review the product license to ensure that you have the necessary authorizations to support your topology and that you understand the usage restrictions for all software components that are included with the product.

For the system requirements, see the IBM Business Process Manager Advanced detailed system requirements (<http://www.ibm.com/support/docview.wss?uid=swg27023005>).

3 Step 3: Review the installation architecture

The following illustration shows the IBM BPM Advanced components that are installed across multiple systems in a common topology, known as a network deployment configuration. At the center is the IBM Advanced Process Center, where all the development activities occur. The authoring tools, the administrative consoles, and the IBM Advanced Process Servers for development, test, staging, and production are connected to the Advanced Process Center.



For more information about the components and user role interactions, see the IBM BPM V8.5.5 documentation (http://www.ibm.com/support/knowledgecenter/SSFPJS_8.5.5/).

4 Step 4: Install IBM Business Process Manager Advanced



To create a network deployment topology by using the DB2 Express Edition database, complete the following steps for a typical installation:

1. Obtain the compressed files from the DVDs or from the downloaded images, and then extract all the files from the compressed files to the same location on your hard disk. You might be prompted to overwrite directories.
2. Start the launchpad file and, from the launchpad, select **using the typical installer**.
3. Select **Install Process Center** or **Install Process Server**, and then click **Next**.
4. Verify the information on the next panel, including the location for the installation, and click **Next**.
5. Install an embedded DB2 Express Edition database. If you already have DB2 installed, you are prompted to install the product using the existing database. Click **Next**.
6. Read and accept the license agreement, and then click **Install Software** to begin your installation. While the software is being installed, you can view and print information about the installation.

When the installation is complete, the Quick Start console starts automatically.

For custom installations, select **using the custom installer** on the launchpad. IBM Installation Manager starts. For detailed installation steps, see the IBM BPM V8.5.5 documentation (http://www.ibm.com/support/knowledgecenter/SSFPJS_8.5.5/).

More information



For additional resources, see the following links:

- IBM Education Assistant (<http://publib.boulder.ibm.com/infocenter/ieduasst/v1r1m0/>)
- WebSphere Application Server Network Deployment documentation (http://www.ibm.com/support/knowledgecenter/SSAW57_8.5.5/as_ditamaps/was855_welcome_ndmp.html)
- Support information (http://www.ibm.com/support/entry/portal/Overview/Software/WebSphere/IBM_Business_Process_Manager_Advanced)

