



IBM Tivoli Foundations Application Manager

Highlights

- ***Monitor, alert, and report on the performance and availability of servers, networks, databases, and Email applications***
- ***Achieve quick time to value with minimal install, configuration and integrated discovery***
- ***Leverage the IBM Lotus Foundations Server, which provides the essential software for business reliability, security and simplicity***
- ***Integrate with other IBM Tivoli Foundations offerings and solutions to provide end-to-end management of the IT environment***

Small and medium-sized organizations are focused on running the business and do not have abundant resources to manage IT. The IT resources needed to manage operating systems, email and database servers, and hardware devices, can quickly become prohibitive. In person monitoring is costly, time consuming and prone to errors—additional staff time is often needed to troubleshoot problems.

Many growing mid-sized organizations leverage multiple solutions to monitor individual systems. Tracking capacity and performance across these systems is not at all cohesive. Many organizations lack central visibility to effectively

monitor the health and availability of IT systems, jeopardizing the delivery of quality of services to their customers. In addition, when new machines need to be introduced or replaced, configuration and integration is tasking and costly.

IBM Tivoli® Foundations Application Manager provides entry level monitoring for the growing medium-sized organization looking for the right functionality in an easy to use and cost effective solution. It provides key capabilities to implement application management in the IT environment including IT asset discovery, network monitoring, server monitoring, and monitoring for key IT elements such as databases, mail servers, and virtual servers.

This easy to use and install monitoring solution delivers both real-time and historical views that allows clients to visualize and intelligently report on how their IT environment is currently operating and has been operating over time. Thus, enabling customers to see service performance and health across network devices, servers, middleware and application components and improve service quality. With IBM Tivoli Foundations Application Manager, IT organizations can reduce operational cost, increase productivity, maintain desired performance and availability goals and increase customer satisfaction.

Integration provides you with comprehensive monitoring

Unlike other solutions in the market that provide “lite” versions of their enterprise solutions, IBM Tivoli Foundations Application Manager is built with IBM Tivoli Monitoring (ITM) technology. This is the same powerful solution used

to manage: Server OS, Virtual Servers, Networks, Databases, and Email applications in an enterprise environment. A customizable user interface can bring together the right set of data and reports (called workspaces) in an easy-to-use interface. Additionally, the Application Manager is integrated with discovery capabilities for quick inventory and deployment of monitoring agents. It can also integrate with IBM Tivoli Foundations Service Manager for complete end-to-end management of incidents and problems.

Alerts and reports allows you to react quicker to risks and plan for the future

The built in alerting situations and expert advice feature can help both novices and experts quickly identify, isolate, and resolve problems. Data warehousing for historical trending and reporting for any metric collected can be leveraged for capacity planning. It can help you anticipate resource over-utilization and plan for future hardware investments

Designed with your interests in mind

IBM Tivoli Foundations Application Manager has been designed to help growing mid-sized organizations with limited funds and resources, achieve quick time to value with minimal install and configuration time.

It runs on the IBM Lotus® Foundations Server, which provides the essential software required in running your business with reliability, security, and simplicity; an ideal server for businesses with limited budgets and IT resources.

Intuitive deployment tools can help IT administrators quickly deploy and get running for fast time-to-value. Its launch pad navigation screen allows both novice and expert users, to quickly access essential operational, administrative screens and reports. It also allows users to customize the views based on the role specific functions within the software appliance.

Predefined views/windows called workspaces, deliver immediate value in displaying performance and availability data, as well as facilitate communication between individuals by providing a common view, with the flexibility to quickly create additional workspaces tailored to the needs of each individual or group.

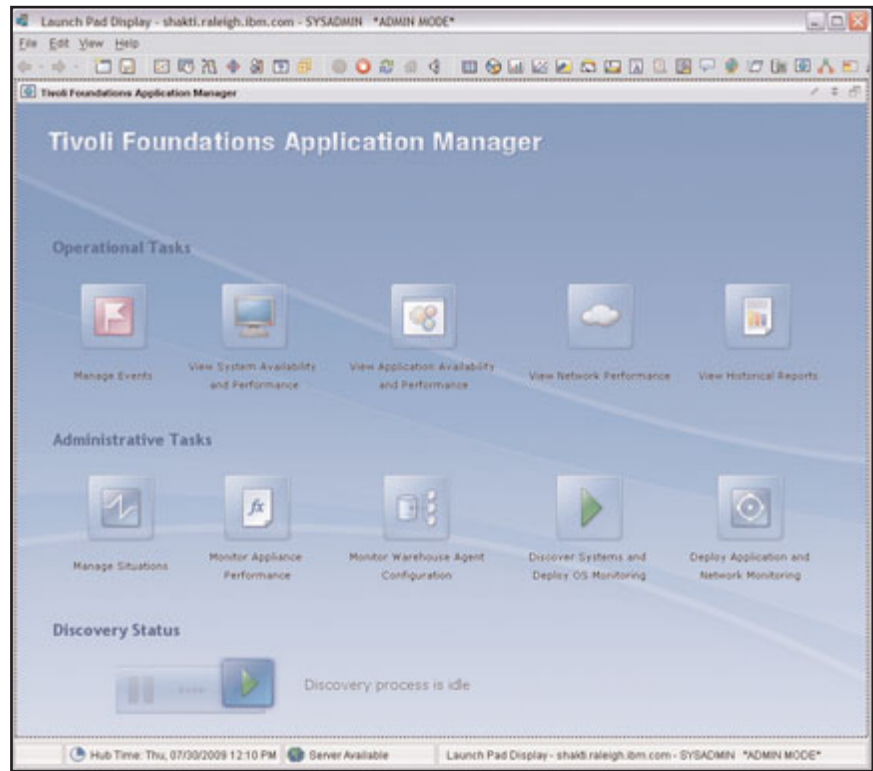
With built in reliability and ease of use, IBM Tivoli Foundations Application Manager provides unique self-managing autonomies to help reduce IT complexity, by automating many critical functions including installation, configuration, security checks, and overall system management.

For more information

To learn more about IBM Tivoli Foundations Application Manager, please contact your IBM marketing representative or IBM Business Partner, or visit the following Web site: ibm.com/tivoli

About Tivoli software from IBM

Tivoli software from IBM helps organizations efficiently and effectively manage IT resources, tasks and



The Foundations Application Manager launch pad provides intuitive and role-specific tasks for all major functions

processes to meet ever-shifting business requirements and deliver flexible and responsive IT service management, while helping to reduce costs. The Tivoli portfolio spans software for security, compliance, storage, performance, availability, configuration, operations

and IT lifecycle management, and is backed by world-class IBM services, support and research.

Additionally, IBM Global Financing can tailor financing solutions to your specific IT needs. For more information on great rates, flexible payment plans and loans, and asset buyback and disposal, visit:

ibm.com/financing



IBM Tivoli Foundations Service Manager at a glance

List of Recommended Certified Hardware:

- IBM Lotus Foundations™ Appliance, model number 9234-CNx and model number 9234-DNx

Optional IBM systems not certified:

- IBM x3200 M2 Simple Swap SATA model number 4367-E1U (requires Intel® Pro 1000 PT Server Adapter (part number 39Y612))
- IBM x3200 M2 Hot Swap SATA model number 4367-E1U (requires Intel Pro 1000 PT Server Adapter (part number 39Y612))
- IBM x3200 M2 Hot Swap SAS model number: 4367-42U (requires Intel Pro 1000 PT Server Adapter (part number 39Y612))
- IBM x206 model number 8482-3MU
- IBM x226 model number 8646-0AU
- IBM x236 model number 8841-01U
- IBM x346 model number 8840-01U
- IBM 3105 model number 4347-64x or model number 4347-22x
- IBM 3200 (SATA Simple Swap and Hot Swap models) model number 4363-2DU or model number 4362-12U
- IBM 3250 model number 4365-6BU
- IBM 3400 model number 7975-5AU

Minimum third-party hardware server requirements:

- x86-based system
- At least one IDE or SCSI hard disk
- At least one Network Interface Card (NIC)
- IDE or SCSI CD-ROM drive
- VGA-based video card
- At a minimum 4GB RAM, 500 GB HD space and two single core CPUs or one dual core CPU.

Required external peripherals: monitor, keyboard, mouse

Operating systems:

- IBM Lotus Foundations Start

Browsers:

- Microsoft® Internet Explorer 6.x or 7.x
- Firefox 3.x

© Copyright IBM Corporation 2009

IBM Corporation
Software Group
Route 100
Somers, NY 10589 U.S.A.

Produced in the United States of America
August 2009
All Rights Reserved

IBM, the IBM logo, ibm.com and Tivoli are trademarks or registered trademarks of International Business Machines Corporation in the United States, other countries, or both. If these and other IBM trademarked terms are marked on their first occurrence in this information with a trademark symbol (® or ™), these symbols indicate U.S. registered or common law trademarks owned by IBM at the time this information was published. Such trademarks may also be registered or common law trademarks in other countries. A current list of IBM trademarks is available on the Web at "Copyright and trademark information" at ibm.com/legal/copytrade.shtml

Microsoft, Windows, Windows NT, and the Windows logo are trademarks of Microsoft Corporation in the United States, other countries, or both.

Other product, company or service names may be trademarks or service marks of others.

References in this publication to IBM products and services do not imply that IBM intends to make them available in all countries in which IBM operates.

Product data has been reviewed for accuracy as of the date of initial publication. Product data is subject to change without notice. Any statements regarding IBM's future direction and intent are subject to change or withdrawal without notice, and represent goals and objectives only.

THE INFORMATION PROVIDED IN THIS DOCUMENT IS DISTRIBUTED "AS IS" WITHOUT ANY WARRANTY, EITHER EXPRESS OR IMPLIED. IBM EXPRESSLY DISCLAIMS ANY WARRANTIES OF MERCHANTABILITY, FITNESS FOR A PARTICULAR PURPOSE OR NON-INFRINGEMENT. IBM products are warranted according to the terms and conditions of the agreements (e.g. IBM Customer Agreement, Statement of Limited Warranty, International Program License Agreement, etc.) under which they are provided.

The customer is responsible for ensuring compliance with legal requirements. It is the customer's sole responsibility to obtain advice of competent legal counsel as to the identification and interpretation of any relevant laws and regulatory requirements that may affect the customer's business and any actions the customer may need to take to comply with such laws. IBM does not provide legal advice or represent or warrant that its services or products will ensure that the customer is in compliance with any law or regulation.



Recyclable, please recycle.

TID14052-USEN-00