

Pulse

Comes to You



IBM

Managing the World's Infrastructure

The Journey to a Dynamic Infrastructure

Sathya Venkatraman

Managing Consultant

IT Strategy & Architecture Services

Global Technology Services - India/SA



© 2009 IBM Corporation

Client Challenges

*Operational issues have
IT at a break point*

Data Center

*Accelerated pace of
business and technology
innovations*



**Costs &
Service
Delivery**



**Business
Resiliency
& Security**



**Energy
Requirements**



FIXED

Multiple forces
are driving a
transformation of
the IT
Infrastructure

DYNAMIC

A Dynamic Infrastructure is ...

IMPROVE SERVICE
REDUCE COST
MANAGE RISK



- the intelligent connection of business and IT assets
- based on Service Management
- enabled by a set of initiatives

A dynamic infrastructure is a journey...



- Service Management
- Asset Management
- Virtualization & Consolidation
- Information Infrastructure
- Energy Efficiency
- Security
- Business Resiliency

...these interrelated initiatives can provide the DNA needed to thrive in a smarter planet.

Dynamic Infrastructure - Stages of adoption

Driving a new level of economics in the data centre by addressing the operational issues through consolidation, virtualization and service management.

Providing rapid service delivery by moving to a shared infrastructure that can scale rapidly without being limited by facilities or power.

Rapidly integrating and supporting new business services at optimized cost efficiency.

Simplified



Shared



Dynamic



Most clients will need to go through these stages to achieve the vision.



Dynamic



New Economics



Rapid Service Delivery



Aligned with Business Goals



Virtualization / Consolidation



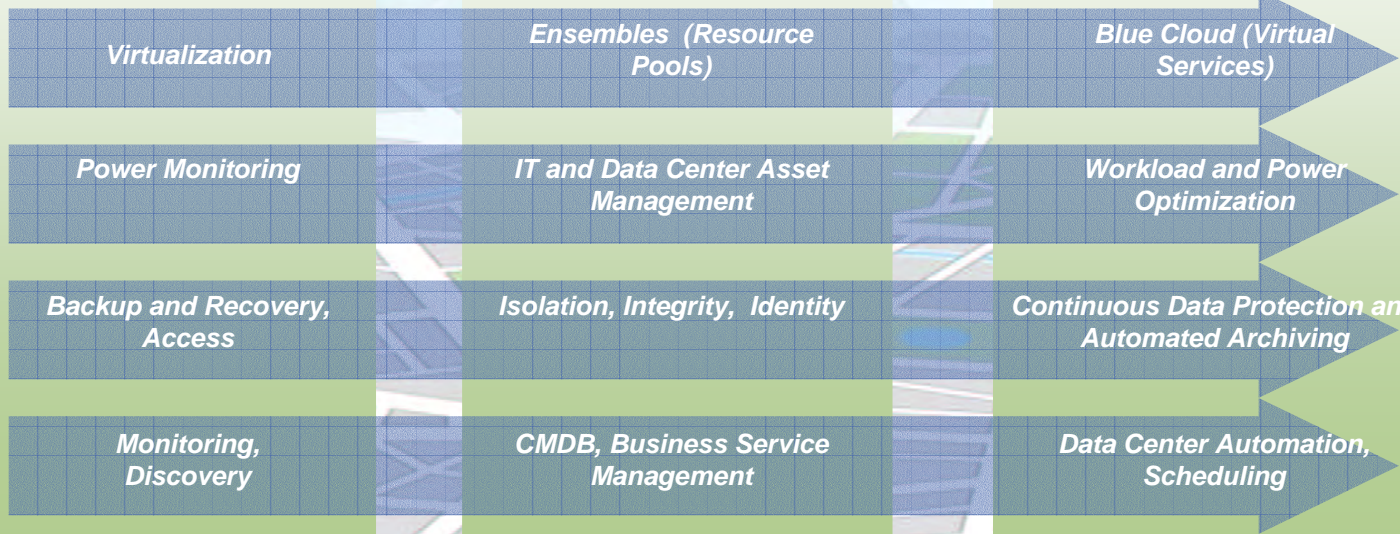
Green



Business Resiliency / Security



Service Management

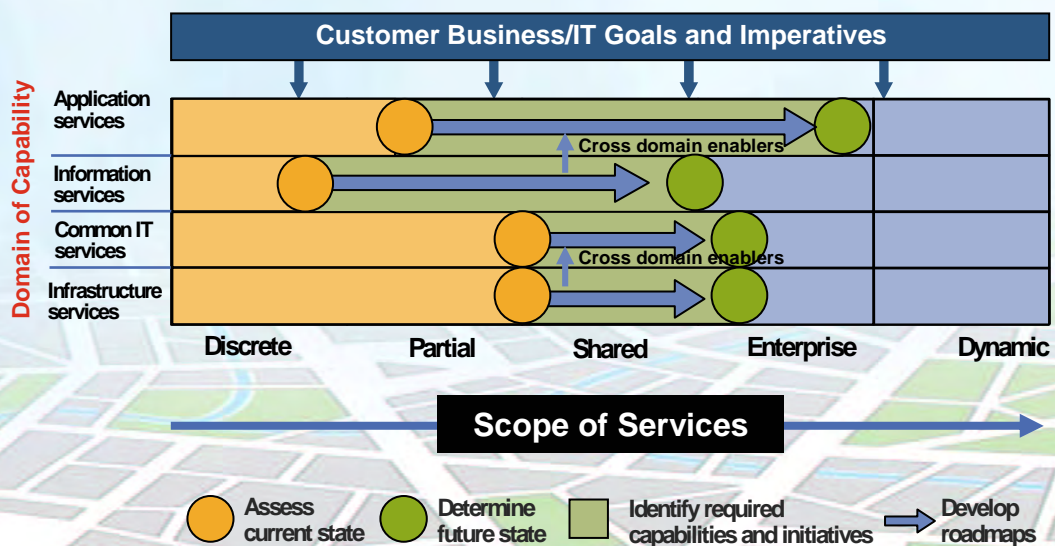


Pulse

Comes to You 2009



How can GTS IT Infrastructure Strategy - Consulting Services Help You?



Balancing Cost, Risk and Service Quality



Dynamic Infrastructure is more than technology



Put *Technology*
Comes to You 2009



In Summary.....



Assess where you are today

Simplified

Shared

Dynamic



Determine the best starting points

- *Begin with Strategic Roadmap:*

- Data Center Transformation
- Service Management Strategy
- Information Architecture

- *Begin by addressing critical operational issues:*

- Consolidation & Virtualization
- Green computing
- Business Resiliency & Security
- Service performance
- IT process automation
- Optimized information availability



Leverage IBM experience

- Client case studies
- Implementation patterns and blueprints

- Architected approach
- World-class technologies and products

Pulse

Comes to You



IBM

Managing the World's Infrastructure

Thank You

*Sathya Venkatraman
Managing Consultant
IT Strategy & Architecture Services*

Sathya.Venkat@in.ibm.com

Contact : +91 9840699186



© 2009 IBM Corporation