



IBM Rational Software Conference 2009

Introduction to Performance Measurement with IBM Rational Insight

Karthikeyan Dakshinamurthy
Senior Software Engineer, Rational Insight Development

Rational software

Businesses are facing an unparalleled rate of change



Successful businesses will use software to drive innovation and competitive differentiation



Challenges to the effective delivery of software

A history of cost overruns, schedule slips and quality issues



“34% of software projects are deemed successful costing \$300B annually”



“49% of budgets suffer overruns and **62%** fail to meet their scheduled”



“Only **22%** of executives felt that their IT and business strategy were tightly integrated”



“50% of outsourced projects are expected to under perform”



30% of project costs are due to rework and poor execution of requirements”

**Growing focus
on business outcomes**

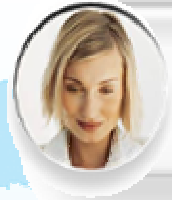
*“Business leaders and CIOs are under pressure to enable their teams to become **catalysts for change**. However, **change is outpacing their ability to deliver**.*

*They are reorienting their teams to **focus on ROI and quantified business outcomes** and to **mitigate risk and reduce costs**.”*

– IBM CIO Survey, 2008



Continuous improvement is difficult due to lack timely information and in-context insight



*"2/3 of executives make more than half of their decisions based on **'gut feel'** rather than verifiable information"*



*"77% of managers are aware of **bad decisions** made due to lack of access to accurate information"*



*"Poor decisions have generated **revenue 75% or more below expectations**"*

Lack of timely information and in-context insight

Disparate data sources, formats, and definitions

Lack of relevant, timely actionable information

Inability to baseline and benchmark status and progress

Inability to measure and assess unobtrusively



Challenges with current reporting solutions for software delivery

Disparate data sources, formats, and definitions

Lack of relevant, timely actionable information

Inability to baseline and benchmark status and progress

Inability to measure and assess unobtrusively

But current reporting solutions fall short



Lack of connectivity to live data: status data input manually into PM tools

Result: disconnect between planning and execution



Reporting is limited to only part of the ALM lifecycle (e.g. test, requirements...)

Result: Creating blind spots with no way to objectively assess progress in a collaborative, globally distributed ALM environment



Weak management of report changes

Result: Information is outdated, not linked to business outcomes



No framework or best practices to convert data into information

Result: Cannot manage performance without clear understanding of what to measure and benchmark



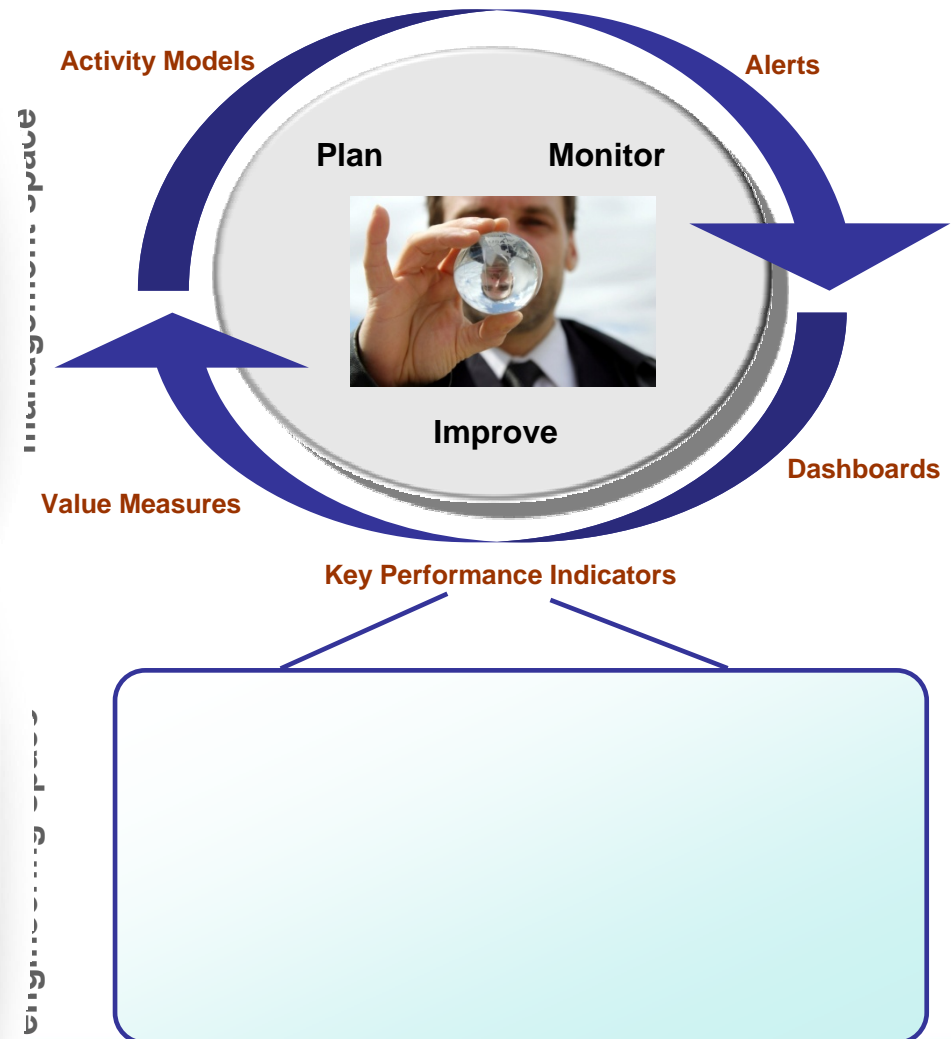
Do You Have the Information You Need to Make the Right Decisions?

▪ **Businesses need a mechanism to:**

- ⊗ Reduce **cost of information gathering**
- ⊗ **Reduce risk** by identifying trends before they become issues
- ⊗ Align SSD activities with strategic and **operational objectives**

▪ **But are still struggling with:**

- ⊗ Combining data from **heterogeneous sources**
- ⊗ Managing by exception
- ⊗ Analyzing **actual progress** against planned objectives and past performance
- ⊗ Implementing proven and repeatable processes to achieve expected **business results**

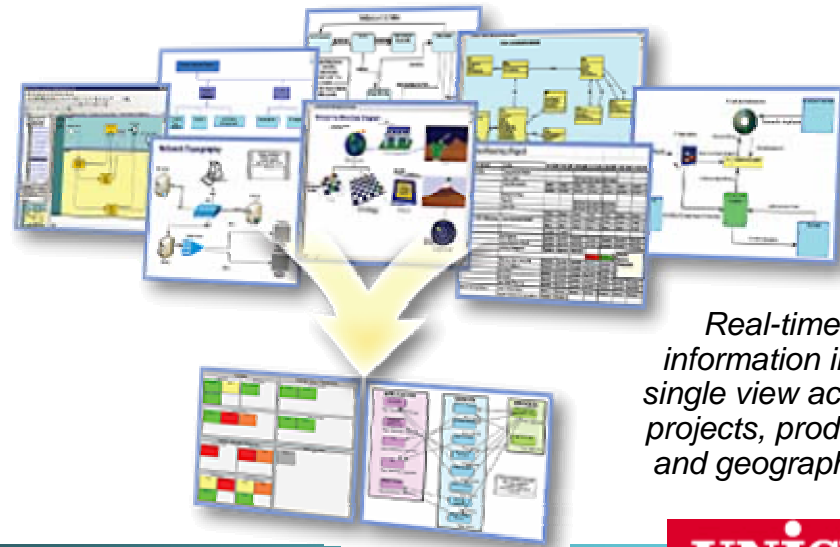




Introducing IBM Rational Insight

Automated project and process measurement can improve team productivity by 15%

- Monitor and analyze project and process performance
 - ▶ **Collaborate** across disparate development artifacts and in the context of operational and business objectives
 - ▶ **Automate** measurement leveraging an open RESTful and Jazz compliant data integration architecture
 - ▶ **Report** on relevant data with a built-in library of industry best practice metrics and dashboards
- Drive business innovation and reduce costs through measures and continuous **process improvement**
- Built on best in class business intelligence platform from IBM **Cognos**



Real-time information in a single view across projects, products and geographies



“Until now we were gathering metrics by manual methods. Rational Insight simplifies the presentation... Overall great tool to have for optimizing project efforts and giving management a birds eye view of the project performance at all stages.”



“Through the automation and dashboard capabilities in Insight, our team is saving over 40 hours a month on our reporting activities. We also can offer new capabilities such as “on-demand” dashboards which would have been very labor intensive to do without Insight”



IBM Rational Insight

Improved Executive Decision Making

- Provides at-a-glance, high impact views of complex real-time information
- Helps quick focus on systems and software delivery issues that need attention and action
- Alignment between actual results and planned business goals
- Includes executive measures tailored to your needs:
 - ▶ Cost, Revenue, Time-to-ROI, Key Performance Indicator (KPI) specific to Line of Business

Companies that don't measure, experience poor staff morale and cannot accurately estimate cost

- Capers Jones (2009)



CxO



Reduce cost and risk by mapping operational activities to strategic initiatives





IBM Rational Insight

Continually Improve Your Process

- Evaluate Historical Data for Lessons Learned and Corrective Action
- Leverage Industry-leading management techniques with ready to use dashboards and reports
- Report on the quality and performance of your projects with built-in measures
 - Measuring Quality, Time-to-Value, Productivity

Companies that don't measure have "unknown" defect removal rate and low user satisfaction

- Capers Jones (2009)

Process Lead



Drive business innovation and reduce costs through measured process improvement

You can't Improve what you don't Measure



IBM Rational Insight

Improved Project Level Decision Making

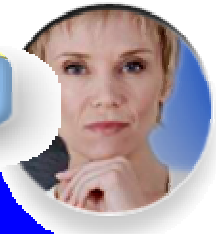
- Get your projects up and running quickly with library of metrics and built-in collectors
- Leverage Rational domain expertise for systems and software development and delivery
- Monitor the status and progress of your projects with built-in measures:
 - ▶ Iteration Velocity, Project Backlog, Requirements Volatility, Defect Density...

Only 45% of projects that do not measure, deliver products on-time to market

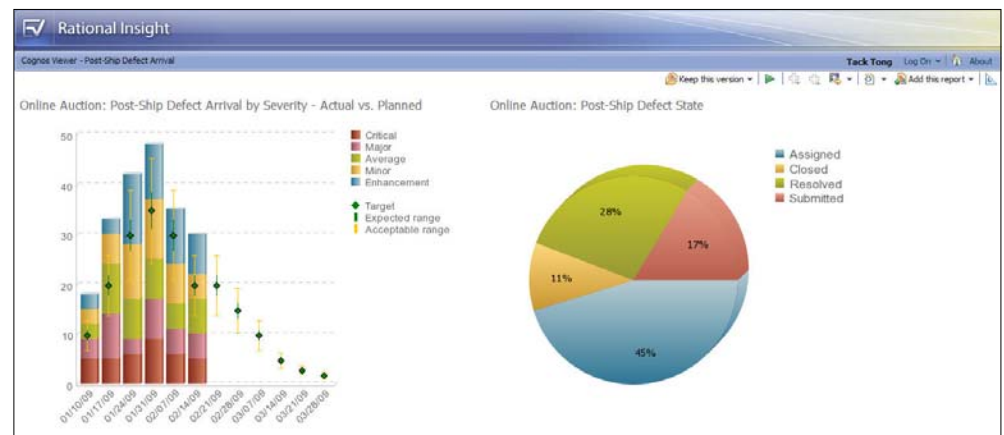
- Capers Jones (2009)



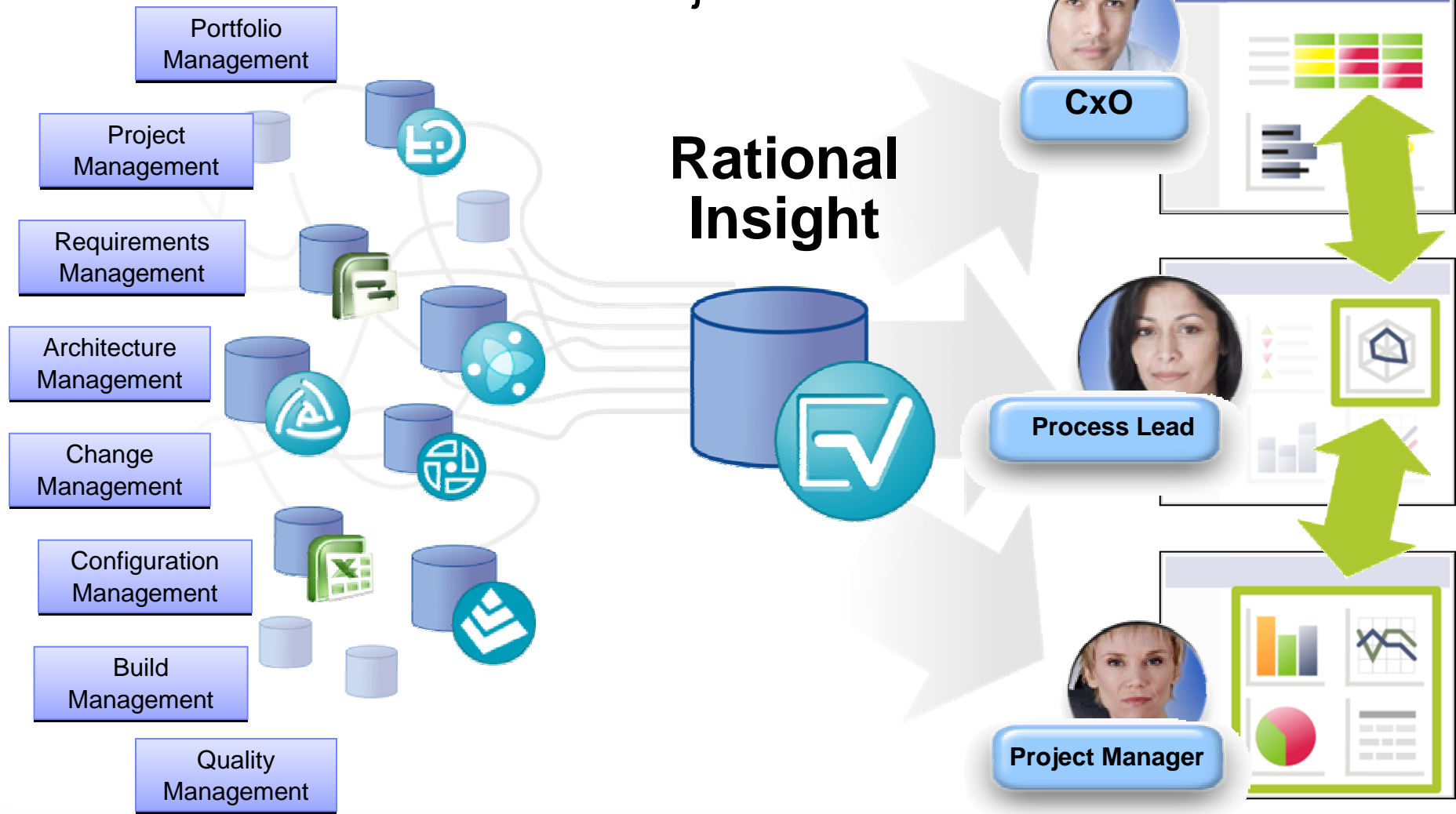
Project Manager



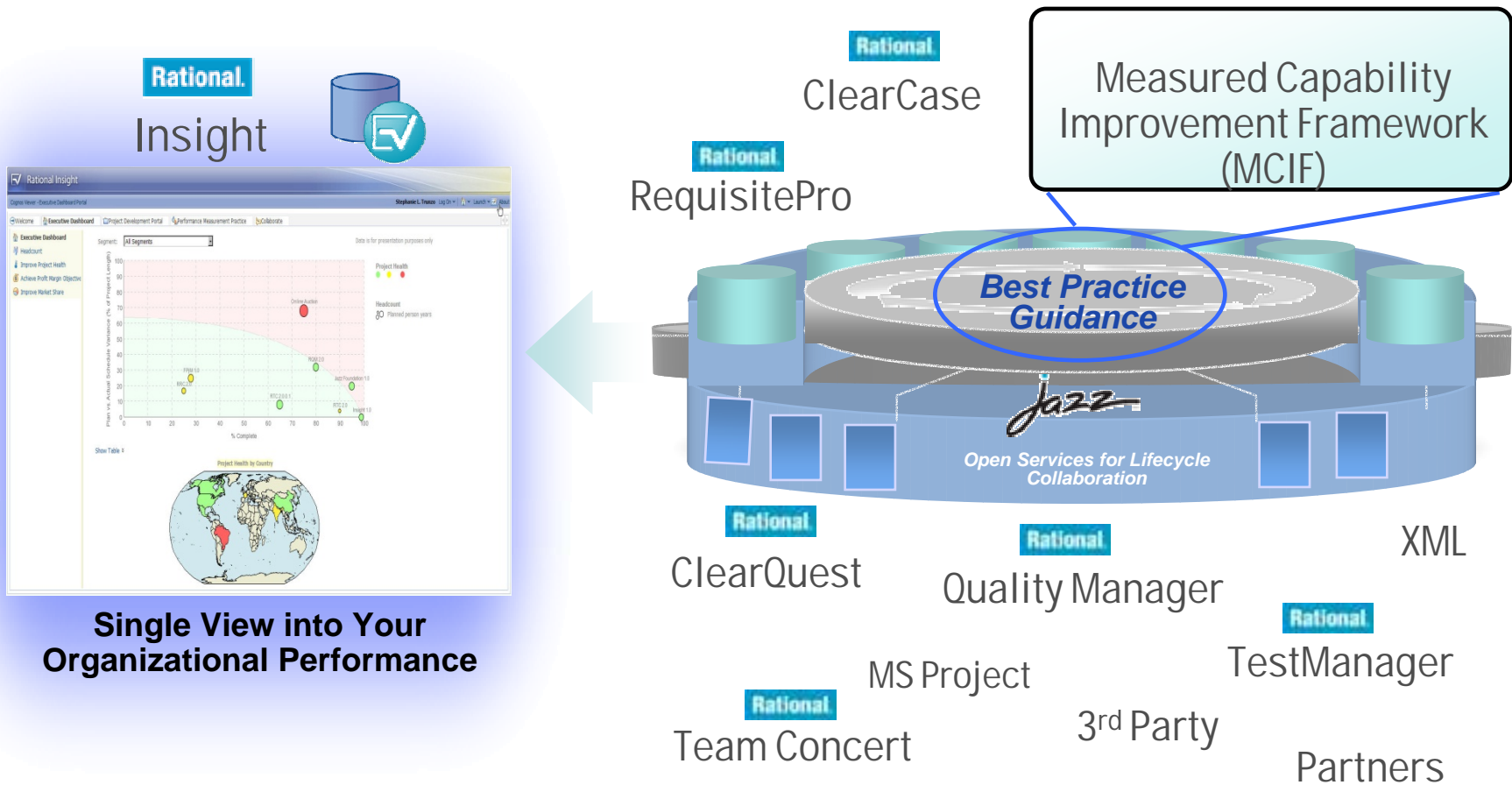
Gain insights into development projects which span organizational and geographic boundaries



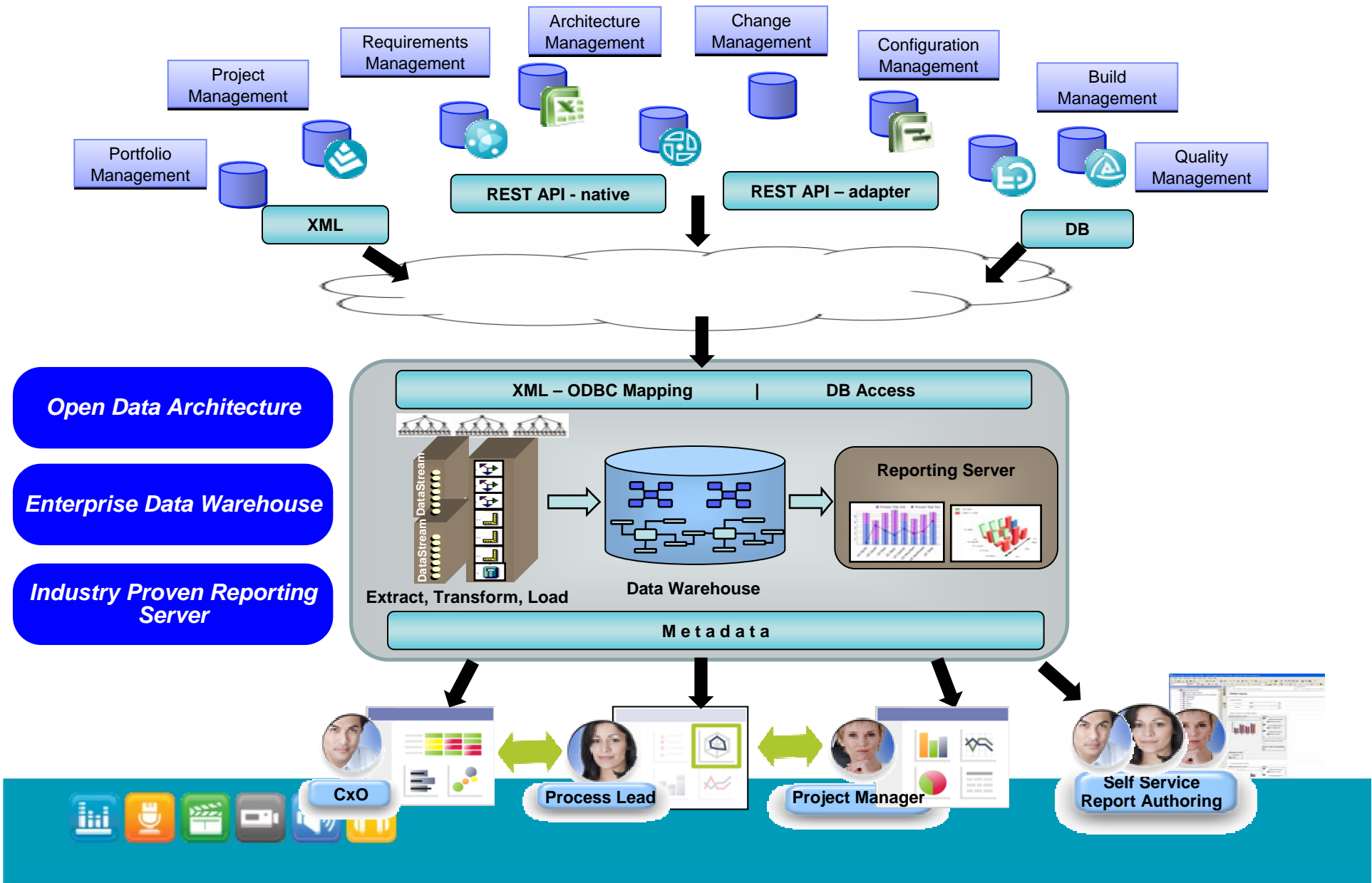
Collaborate across disparate development artifacts In the context of business objectives



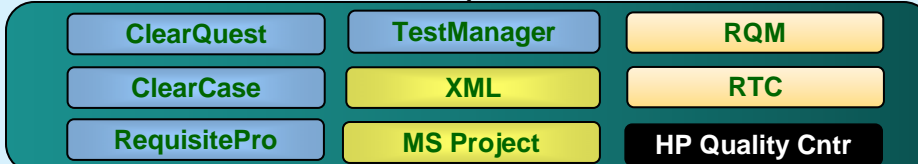
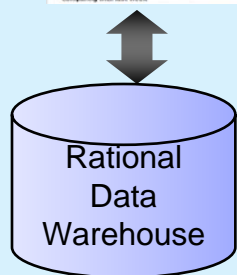
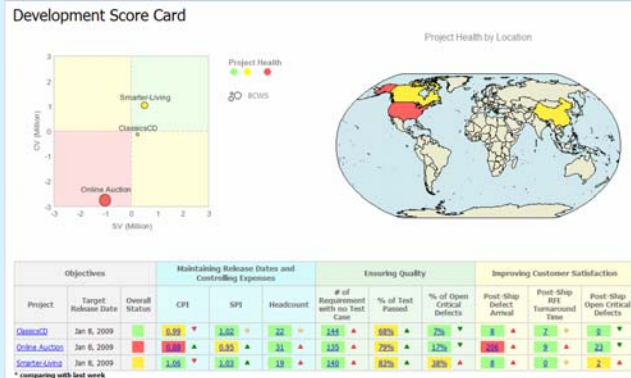
Unify Disparate Data Sources into Objective Dashboards with Rational Insight



Rational Insight Architecture



Rational Insight Performance Measurement Solution



- Practitioners work in geographically distributed teams using heterogeneous environments (Rational, Microsoft, HP, etc.)
- Data is automatically collected from tool repositories and aggregated into the BI reporting data warehouse
- Cognos 8.4 BI reporting engine provides report authoring, management, security, scheduling, bursting, delivery, etc. May be extended with additional Cognos components.
- Out-of-the-box reports and dashboards aligned with MCIF performance management initiatives



Rational Insight Architecture – DW Report Execution

Legacy Products

- ClearQuest
- ClearCase
- RequisitePro
- ...

Jazz-based Products

- RTC(ODBC)
- RQM
- ...

Telelogic Products

- DOORS
- FocalPoint
- ...

3rd Party Products

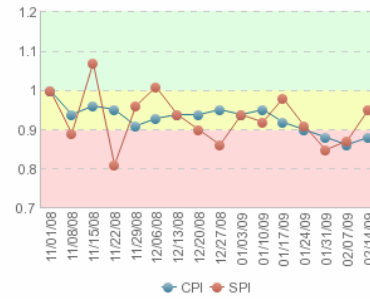
- MS Project
- ...

WebSphere Application Server 6.1

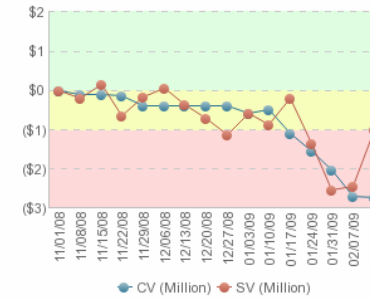
Rational Insight Data Services

▶ Smarter Planet ▶ Online Auction

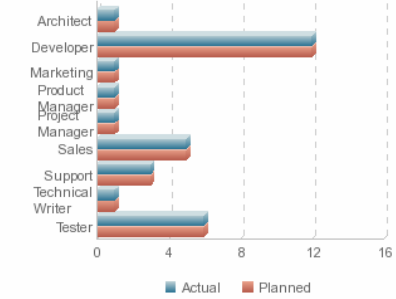
CPI & SPI



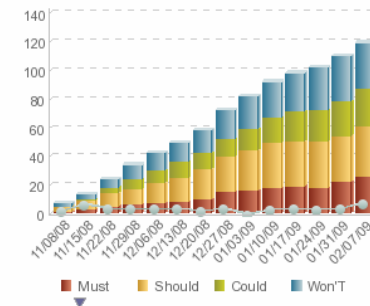
CV & SV



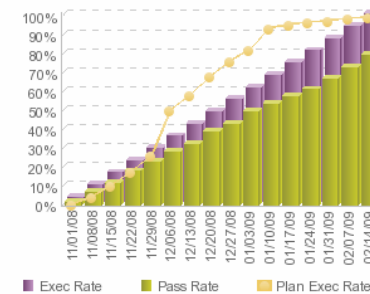
Headcount - Actual vs. Planned



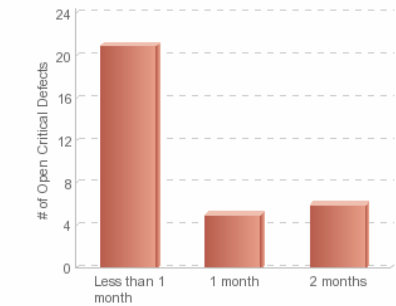
Requirements with no Test Case by Priority



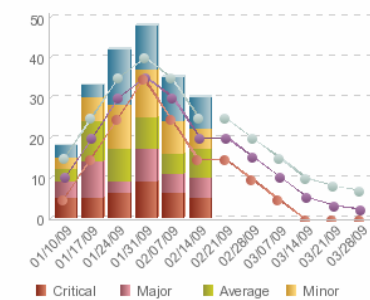
Test Execution Status



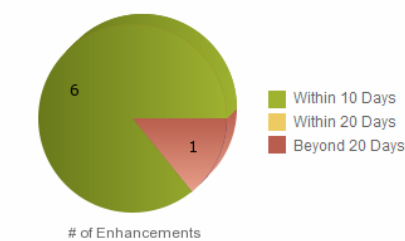
Open Critical Defects by Age



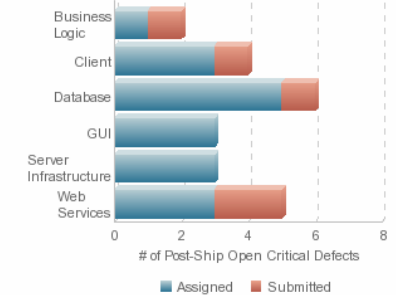
Post-Ship Defect Arrival by Severity - Actual vs. Planned



Post-Ship RFE Turnaround Time



Post-Ship Open Critical Defects by Component & State



Rational Insight Architecture – Live Data Report Execution



Legacy Products

ClearQuest

ClearCase

RequisitePro

...

Jazz-based Products

RTC(ODBC)

RQM

...

Telelogic Products

DOORS

FocalPoint

...

3rd Party Products

MS Project

...

Tag	Number of Test Cases	Name	Type	Status	Priority	Stability	Difficulty
FEAT2656	1	Enable system to subscribe to data feeds	Feature	Proposed	Must	Low	Medium
FEAT29632	1	Support ability to update database with current operational data	Feature	Proposed	Must	Medium	High
FEAT33569	1	Maintain customer information	Feature	Proposed	Won'T	High	Medium
FEAT33585	1	OPTIONS FOR DISPLAY	Feature	Proposed	Must	High	High
FEAT42047	1	Support deployments using open source app servers	Feature	Proposed	Must	Low	Low
FEAT42048	1	Collect metrics from project planning tools	Feature	Proposed	Could	Low	Medium
FEAT42062	1	Support process audits	Feature	Proposed	Won'T	Medium	Medium
FEAT46566	1	POSSIBLE NEW ACCOUNT	Feature	Proposed	Must	High	Medium
FEAT46568	1	NO MATCHING CDs	Feature	Proposed	Won'T	High	High
FEAT46571	1	Allow suggestion options	Feature	Proposed	Won'T	Low	High
FEAT46574	1	Language support	Feature	Proposed	Could	Medium	Medium
FEAT46582	1	OS	Feature	Proposed	Should	Medium	High
FEAT46590	1	The system shall save all updated data to the Customer Information database when the SAVE button is pressed.	Feature	Proposed	Should	Low	Medium
FEAT51288	1	The system shall offer a comprehensive on-line help system.	Feature	Proposed	Must	Low	Medium
FEAT51306	1	Provide notification when jobs have run	Feature	Proposed	Should	High	Low
FEAT56206	1	Provide common components for consistent cross product operation	Feature	Proposed	Should	Medium	Low
FEAT56209	1	Provide adequate data and access control security	Feature	Proposed	Could	Medium	Medium
FEAT56210	1	Provide web based viewing of displays	Feature	Proposed	Could	High	High
FEAT56217	1	Enable display information to be saved "published" persisted	Feature	Proposed	Won'T	Low	Low
FEAT56225	1	Ability to check status of an order	Feature	Proposed	Should	High	Medium



Rational Insight Architecture – ETL Process

Legacy Products

ClearQuest

ClearCase

RequisitePro

...

Jazz-based Products

RTC(ODBC)

RQM

...

Telelogic Products

DOORS

FocalPoint

...

3rd Party Products

MS Project

...

Server 6.1

Schedule - LoadRATLctoNF64

Schedule the entry to run at a recurring date and time. You can disable the schedule without losing any of its details.

Disable the schedule

Priority: 1

Start: Nov 26, 2008 7 : 00 PM

End: No end date End by: Apr 13, 2009 12 : 17 AM

Frequency: Select the frequency by clicking on a link.

By Day [By Week](#) [By Month](#) [By Year](#) [By Trigger](#)

Every 1 minute(s)

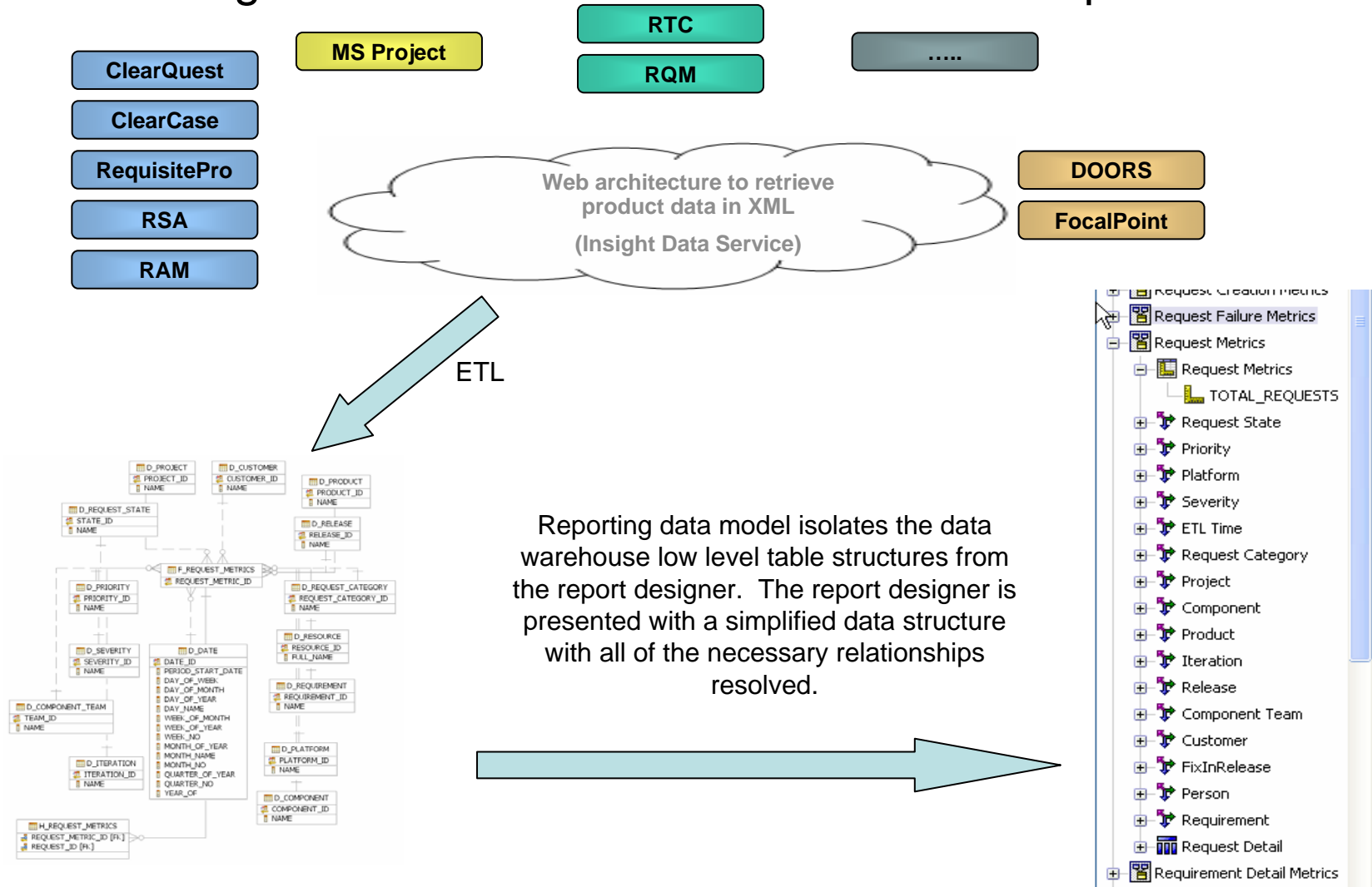
Every 1 hour(s)

Every 1 day(s)

OK Cancel



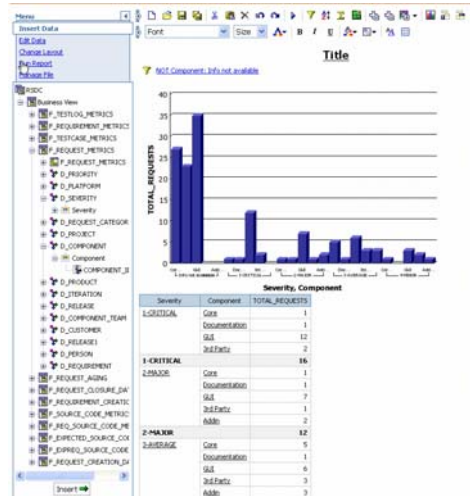
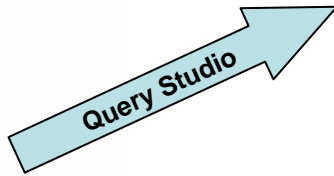
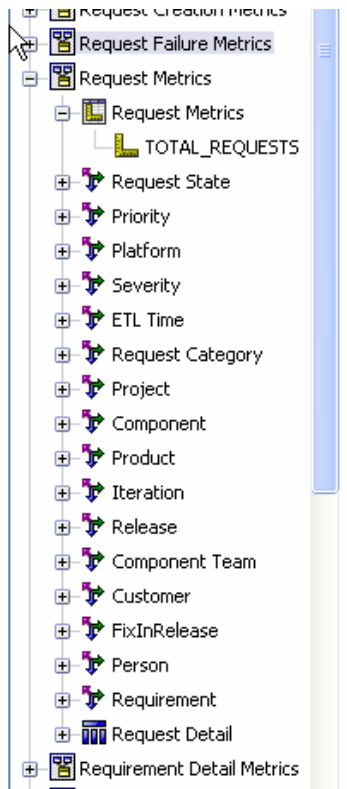
Rational Insight – Data Source/Data Warehouse/Reports



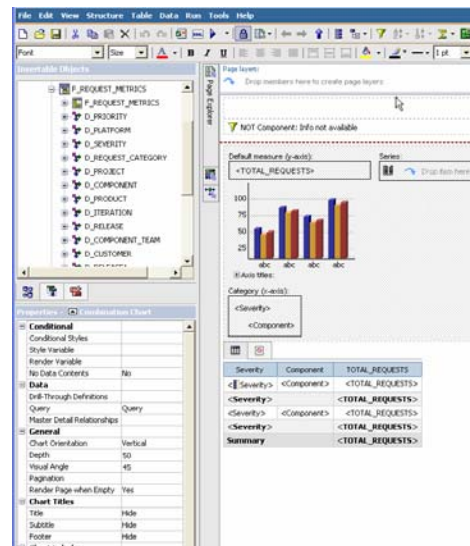
Reporting data model isolates the data warehouse low level table structures from the report designer. The report designer is presented with a simplified data structure with all of the necessary relationships resolved.



Rational Insight Architecture - Reports



Query Studio lets users with little or no training quickly design, create and save reports to meet reporting needs not covered by the standard, professional reports created in Report Studio.



Report Studio lets report authors create, edit, and distribute a wide range of professional reports. They can also define corporate-standard report templates for use in Query Studio, and edit and modify reports created in Query Studio.



Summary

You cannot IMPROVE what you cannot MEASURE!



Raise enterprise transparency to **reduce costs and risks** by mapping operational activities to strategic objectives



Drive **business innovation** and **reduce costs** through measured and continuous process improvement



Gain insight into development projects which span organizational and geographic boundaries



Rational. software

Thank
you

© Copyright IBM Corporation 2009. All rights reserved. The information contained in these materials is provided for informational purposes only, and is provided AS IS without warranty of any kind, express or implied. IBM shall not be responsible for any damages arising out of the use of, or otherwise related to, these materials. Nothing contained in these materials is intended to, nor shall have the effect of, creating any warranties or representations from IBM or its suppliers or licensors, or altering the terms and conditions of the applicable license agreement governing the use of IBM software. References in these materials to IBM products, programs, or services do not imply that they will be available in all countries in which IBM operates. Product release dates and/or capabilities referenced in these materials may change at any time at IBM's sole discretion based on market opportunities or other factors, and are not intended to be a commitment to future product or feature availability in any way. IBM, the IBM logo, Rational, the Rational logo, Telelogic, the Telelogic logo, and other IBM products and services are trademarks of the International Business Machines Corporation, in the United States, other countries or both. Other company, product, or service names may be trademarks or service marks of others.

