



IBM Rational Software Conference 2009
As Real as It Gets!



“Life can’t get more real when you’re Managing Change”

Introducing Our Myth Busters:



Kartik Kanakasabesan Manager: Jazz Jumpstart

Sean Innes Product Manager: Change and Release Mgmt.

Rational. software

CRM01
CRM Keynote



We would like to present...

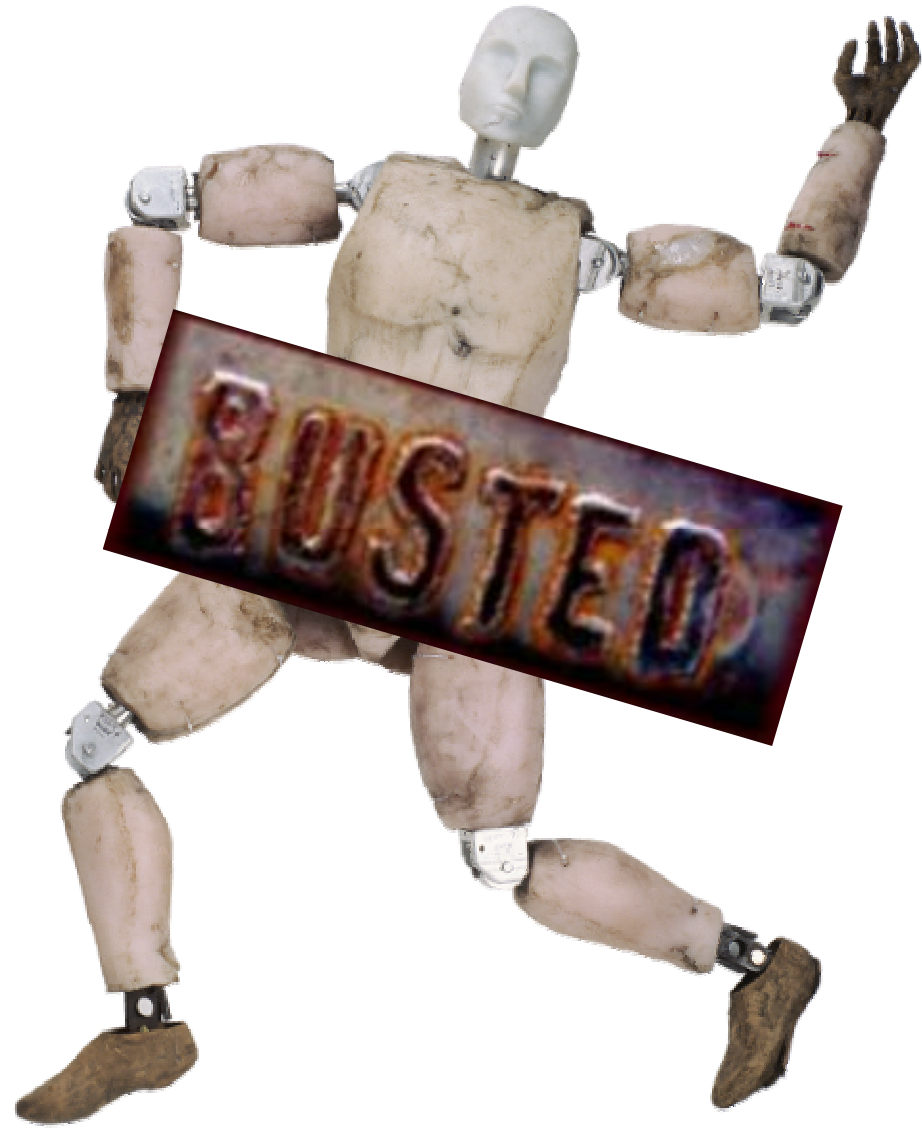
CRM Myths



Let's practice a little... (just for fun)

MYTH

The term 'bug' was coined in 1945 when a trapped moth was found to be the cause of a malfunction in a primitive computer at Harvard



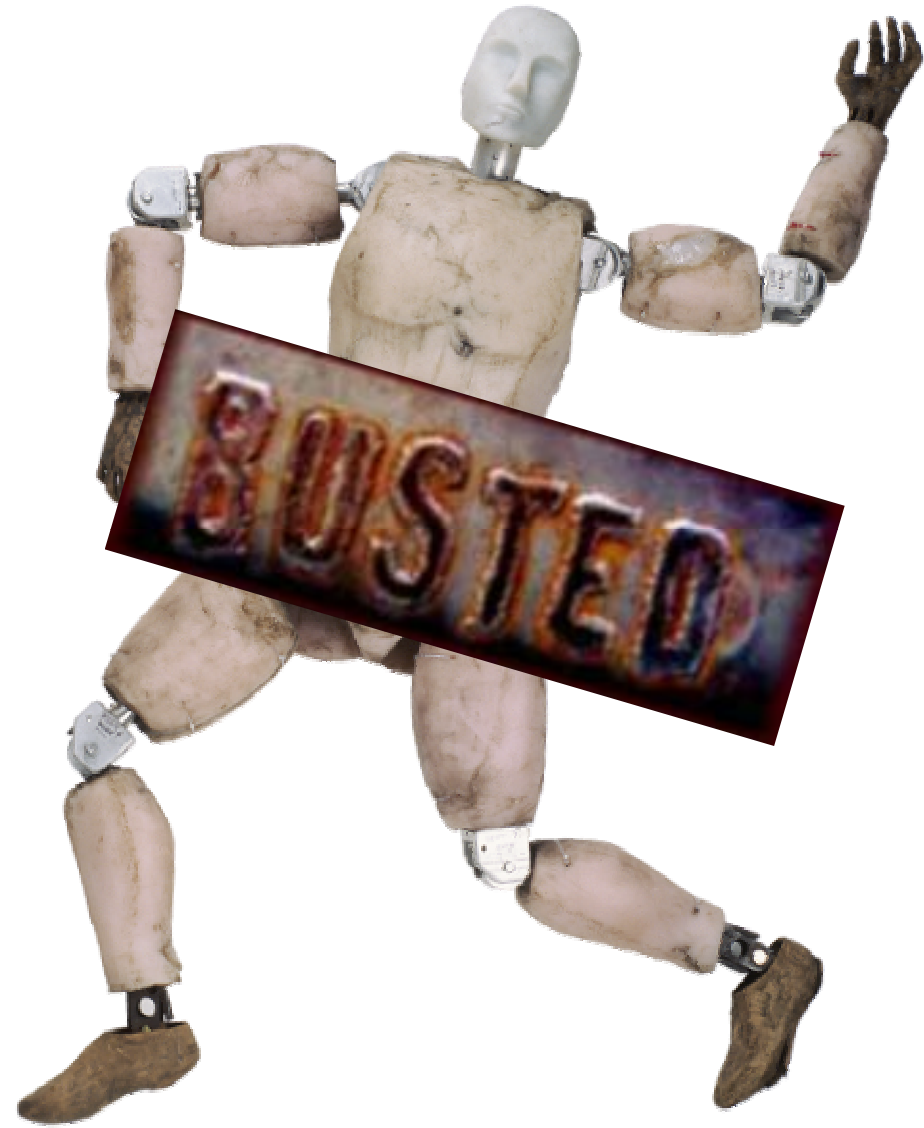
MYTH

Microsoft once announced it was developing a portable toilet, called the iLoo, in which users could surf the Internet



MYTH

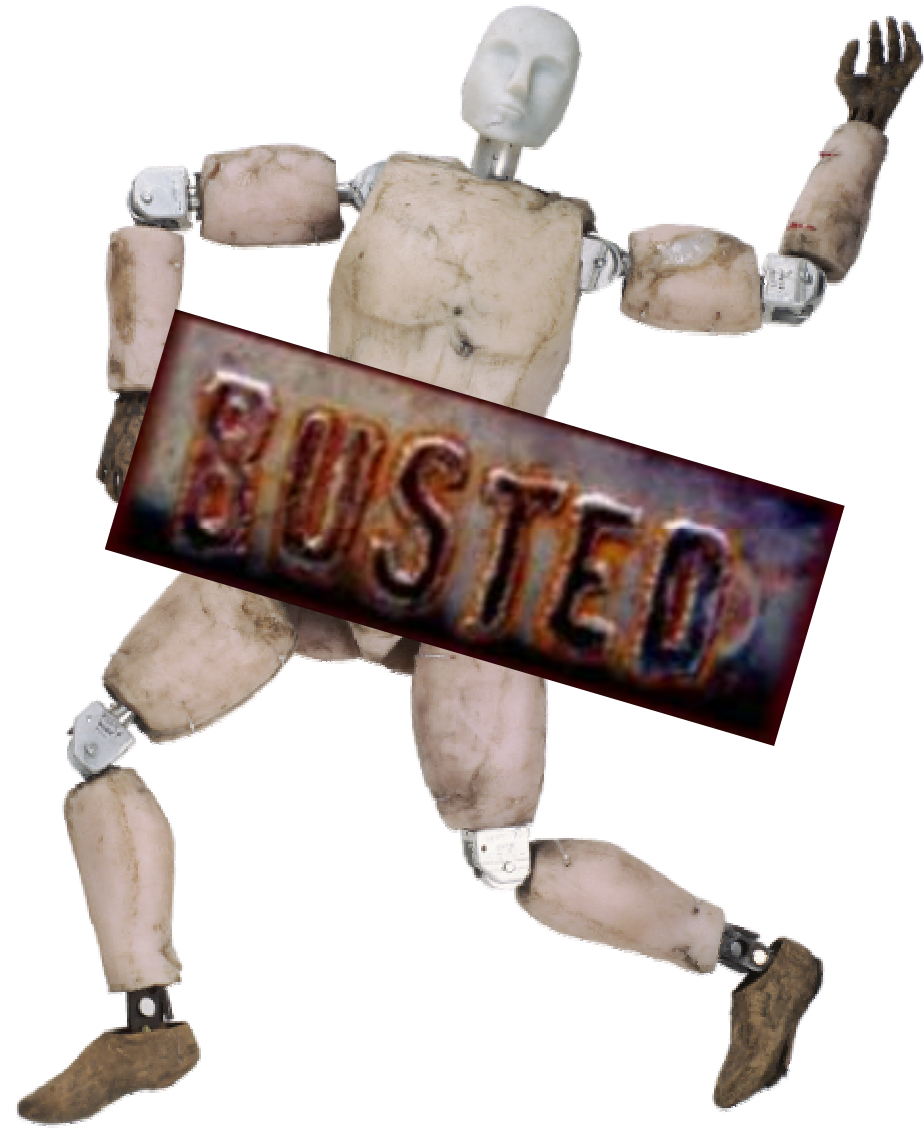
HAL, the computer in the film 2001: A Space Odyssey, was named after IBM, with each letter shifted back one place in the alphabet.



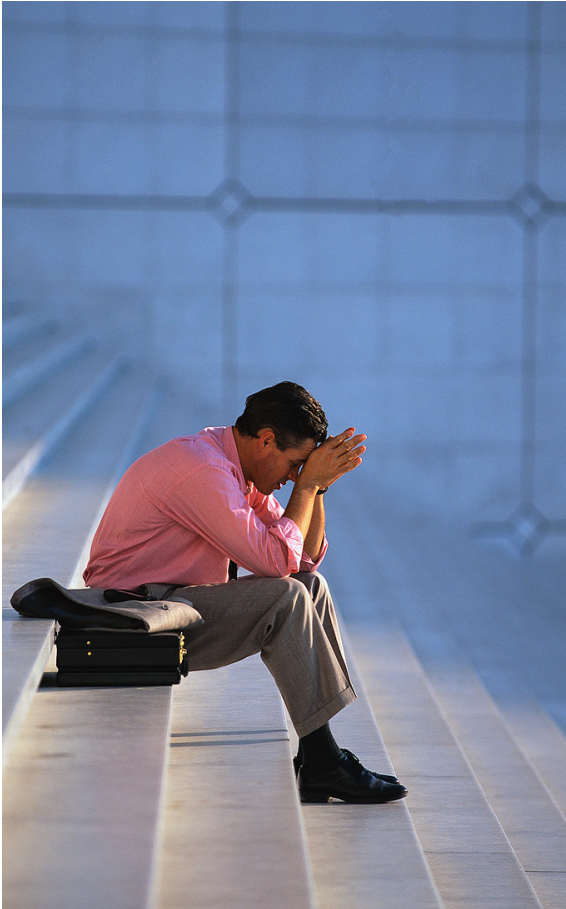
Now let's move onto our first CRM Myth!

MYTH

Change
Management
focuses on Defects
only!



What is the business impact of not managing change?



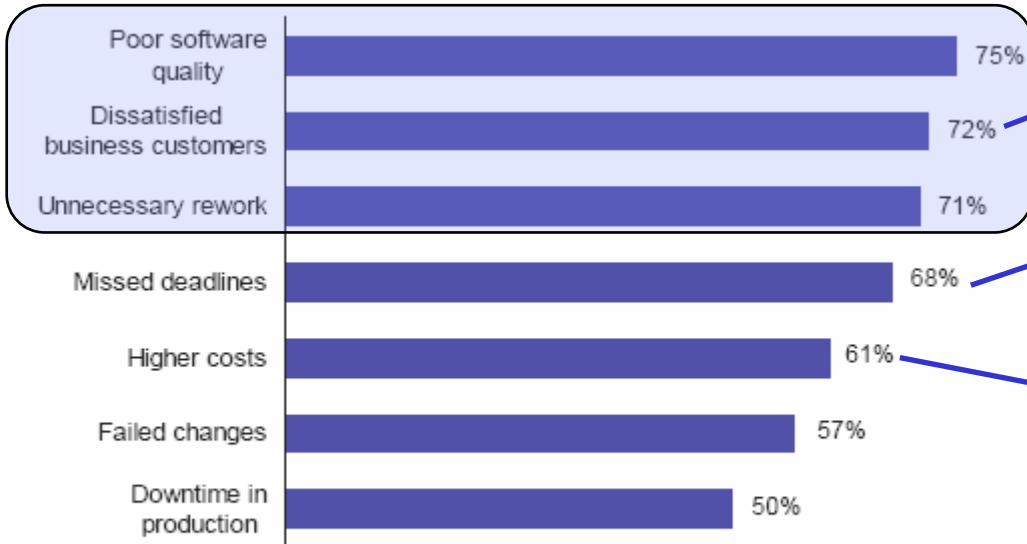
- Delayed and missed releases
- Increased development costs
- Poor and unpredictable quality
- Customer dissatisfaction



Change Management: At the core of Software Delivery

Lack of proper change management hits directly at the bottom line

“What types of pain does a lack of change management processes cause your company?”



Base: 28 North American \$500M+ companies, of 102 surveyed, that do not have defined change management processes for all software (multiple responses accepted)

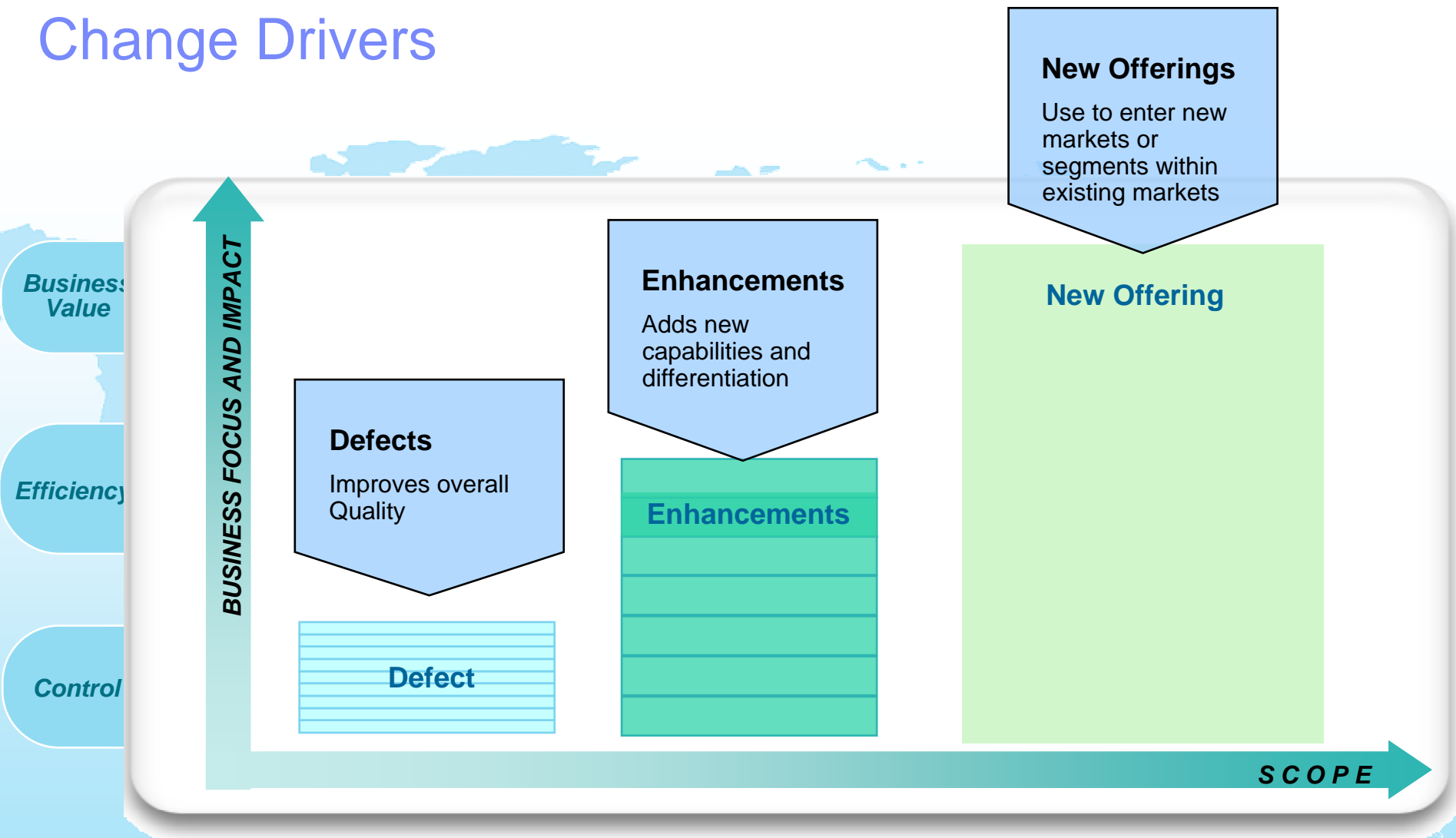
Here are but a few examples:

SAP sued over 'complete failure' of software (Mar. 2008)

BlackBerry Storm delay caused by software issues (Nov. 2008)

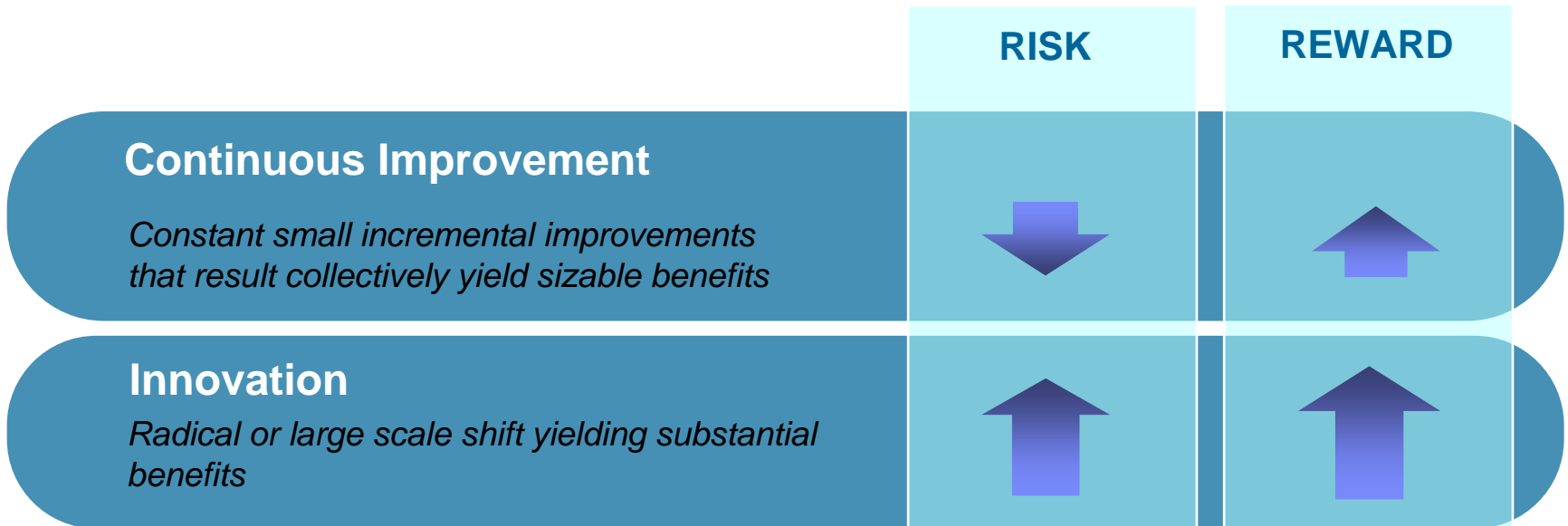
NIST Report: Software Errors Cost U.S. Economy \$59.5 Billion Annually (June 2002)

Change Drivers



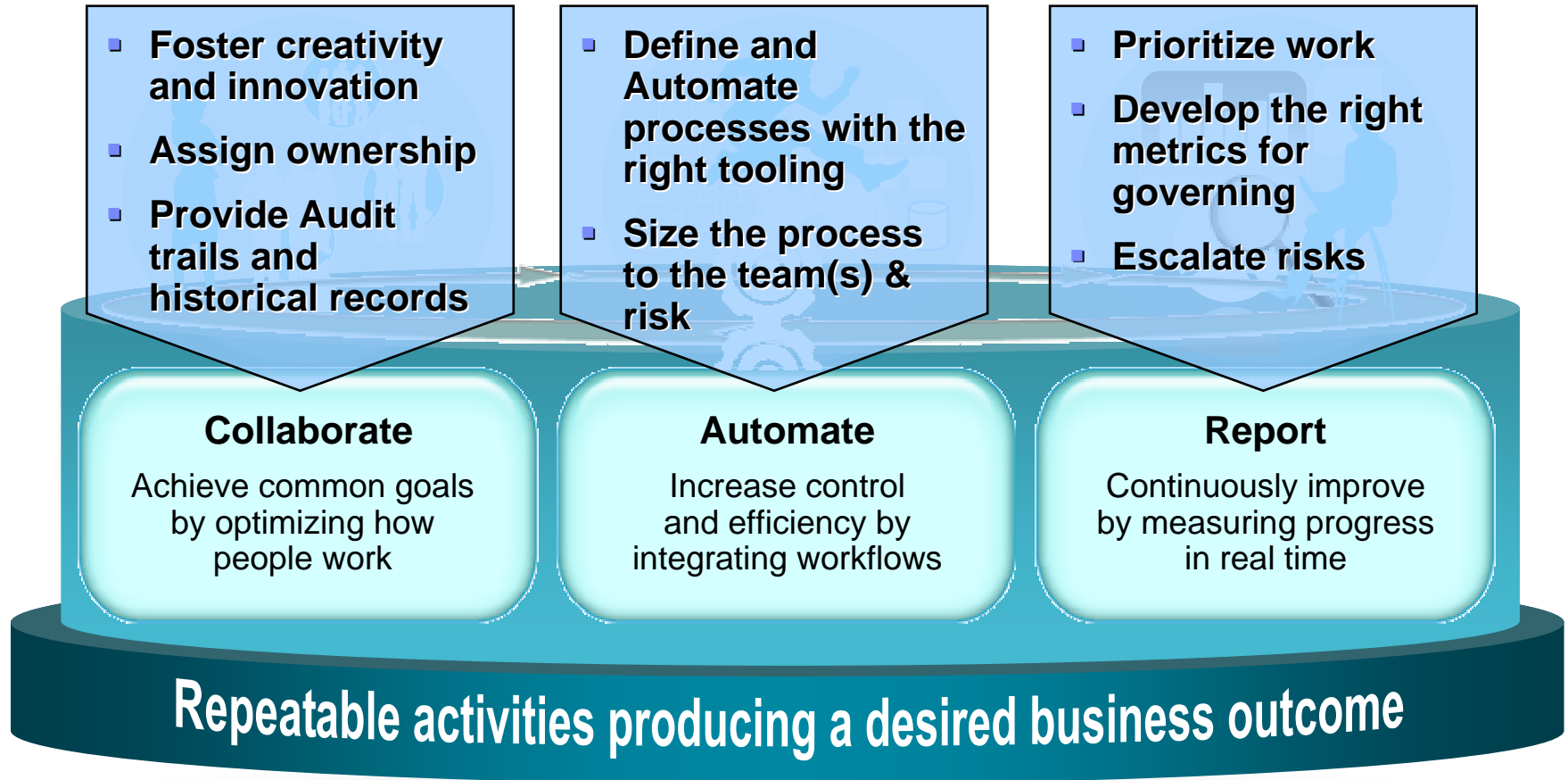
Change is the Driver of all Software Delivery

Types of Change



Both Continuous Improvement and Innovation are key to an effective Change Management strategy

Driving business success!

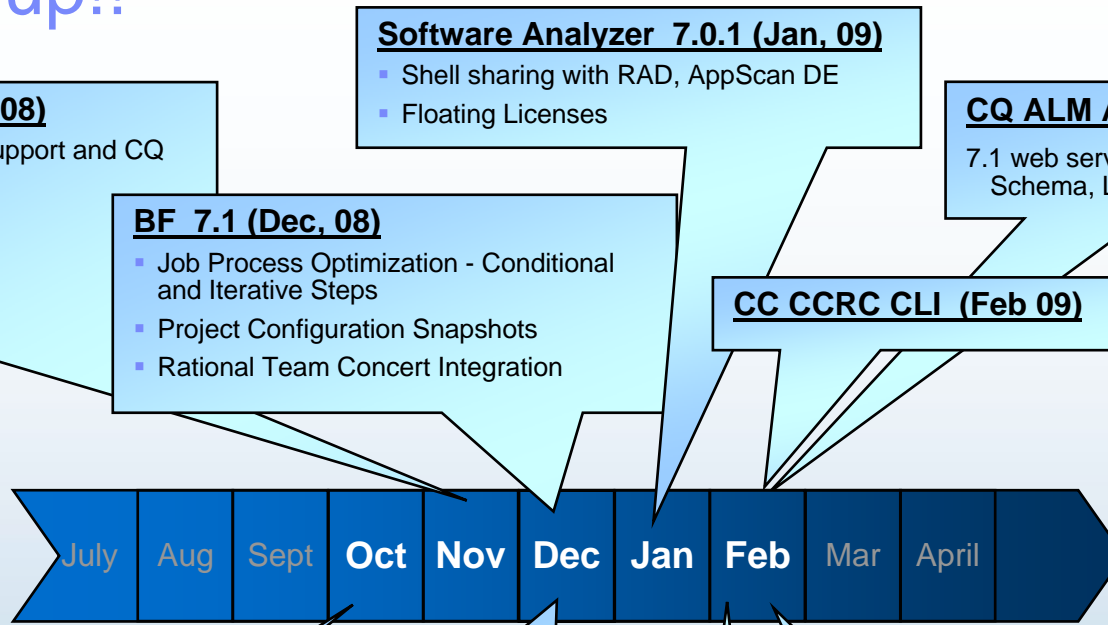


MYTH

Change
Management
focuses on Defects
only!



Let's catch up!!



CC & CQ 7.1 (Nov, 08)

- CCRC agile process support and CQ workspaces
- CQ web
- Common CM Server
- CC MS Global Monitor

Software Analyzer 7.0.1 (Jan, 09)

- Shell sharing with RAD, AppScan DE
- Floating Licenses

CQ ALM Appliance (Feb 09)

7.1 web server, DB2 with ALM Schema, Linux, FLEXLM server

BF 7.1 (Dec, 08)

- Job Process Optimization - Conditional and Iterative Steps
- Project Configuration Snapshots
- Rational Team Concert Integration

CC CCRC CLI (Feb 09)

RSDC



June, 2008

RSC



June, 2009

Synergy 7.0 & Change 5.1 (Dec, 08)

- Synergy 7.0
- New WAN client for working from home and globally dispersed sites
 - Up to 50x faster over the WAN
- Change 5.1
- Central & Remote CRs
 - Enterprise Change Process, CMMI Level 3 / 4

RTC 1.0.1 (Oct, 08)

- Floating Licenses
- Non-Secure Proxy support
- Integration with RRC, RQM
- SQL Server support

Mainsoft Document collaboration for Rational Jazz 1.0 (Feb, 09)

- IBM Lotus Quickr
- Microsoft SharePoint



RTC 1.0.1.1 (Feb, 09)

- Translations 13 languages
- Visual Studio Client



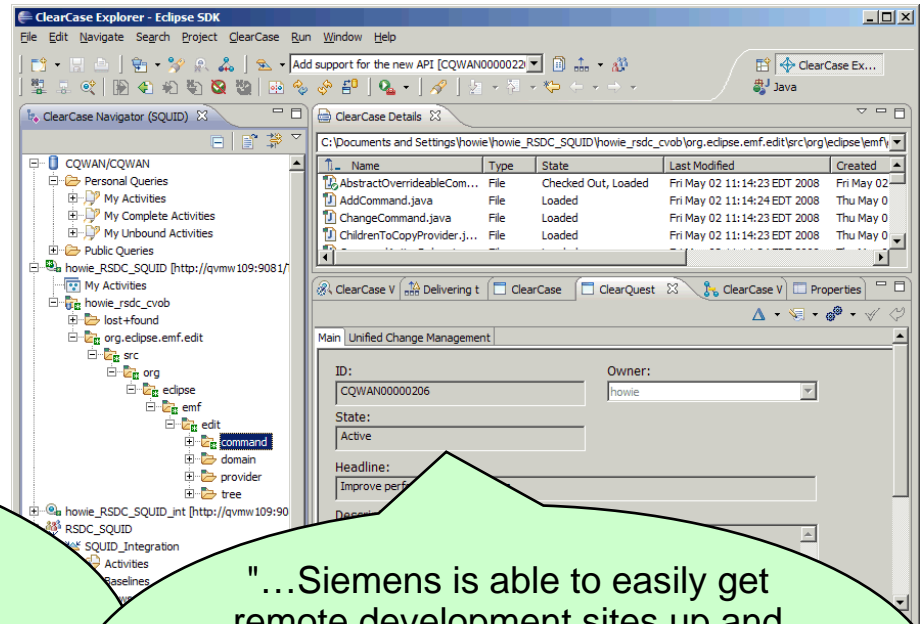
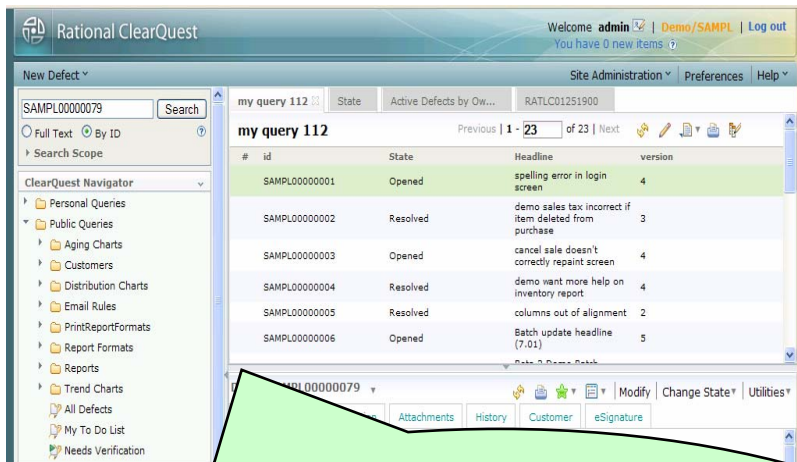
Released
Nov 2008

ClearCase & ClearQuest 7.1

Real Teams, Real Results!

Rational ClearQuest Web
for the Team

& ClearQuest
Rational ClearCase Remote Client (CCRC)
for the Developer



"The new ClearQuest web 2.0 interface is familiar, dynamic and state-of-the-art. With most of our company using ClearQuest - including developers, human resources, legal and IT - the ease of use can potentially lead to huge productivity gains."

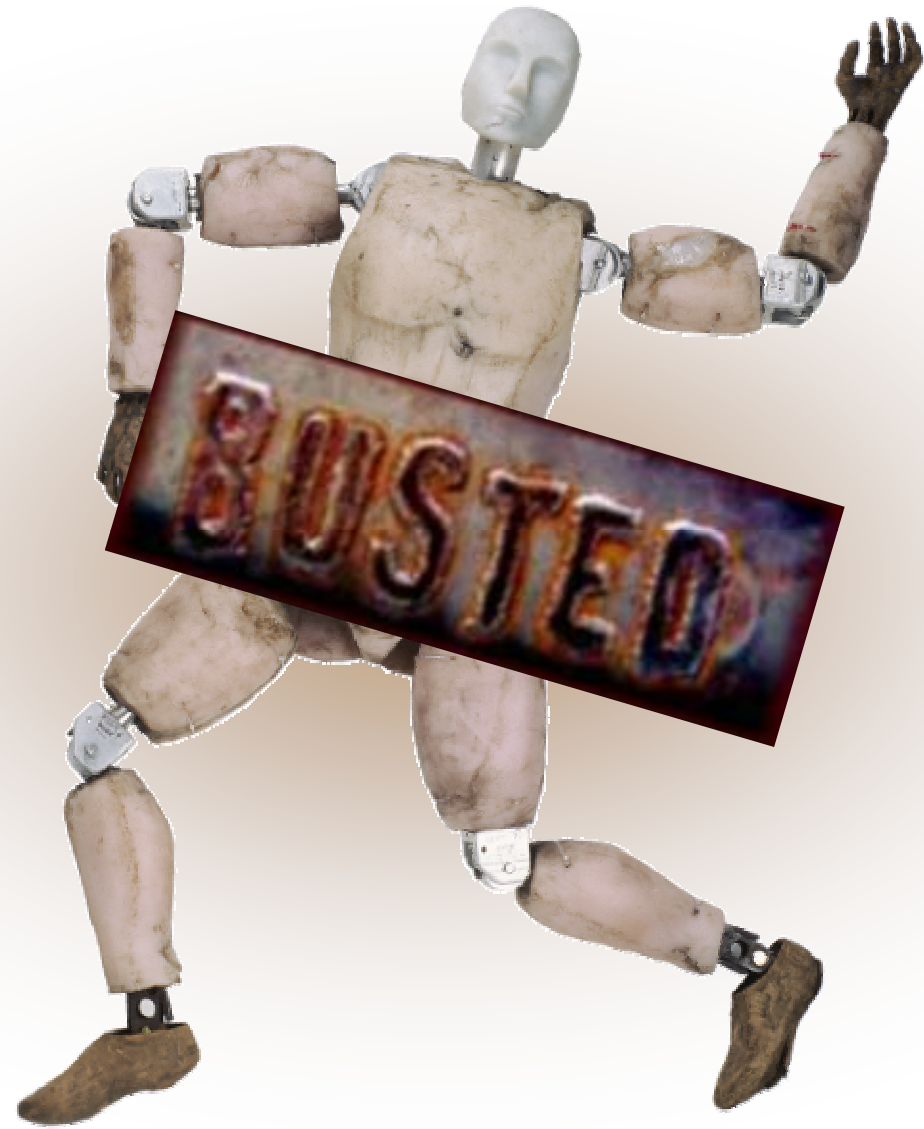
-- Mike Warfield, Mentor Graphics

"...Siemens is able to easily get remote development sites up and running in a fraction of the time utilizing the new ClearCase Remote Client (CCRC) interface. ..."

-- Rainer Ersch, Siemens AG

MYTH

Team Concert is
just for Java
Developers!



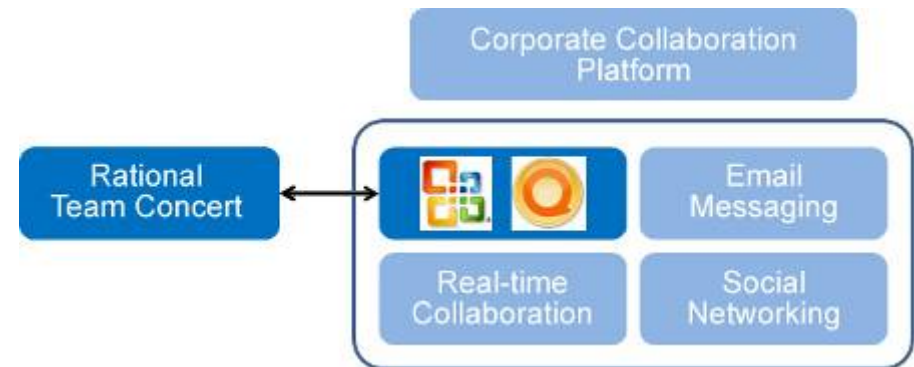
New!

Released

Feb 2009

Mainsoft Document Collaboration for Rational Jazz

- Collaboration in context
Extend development teams' collaboration toolkit with direct, per-project document linkages
- End-to-end governance
Improve the transparency of software deliveries as well as automate and enforce project governance
- Business stakeholders can participate in software deliveries
Using their preferred collaboration tools – either Microsoft or Lotus



**Connect with
Microsoft SharePoint or
Lotus Quickr**

Team Concert Visual Studio Client

Released

Feb 2009

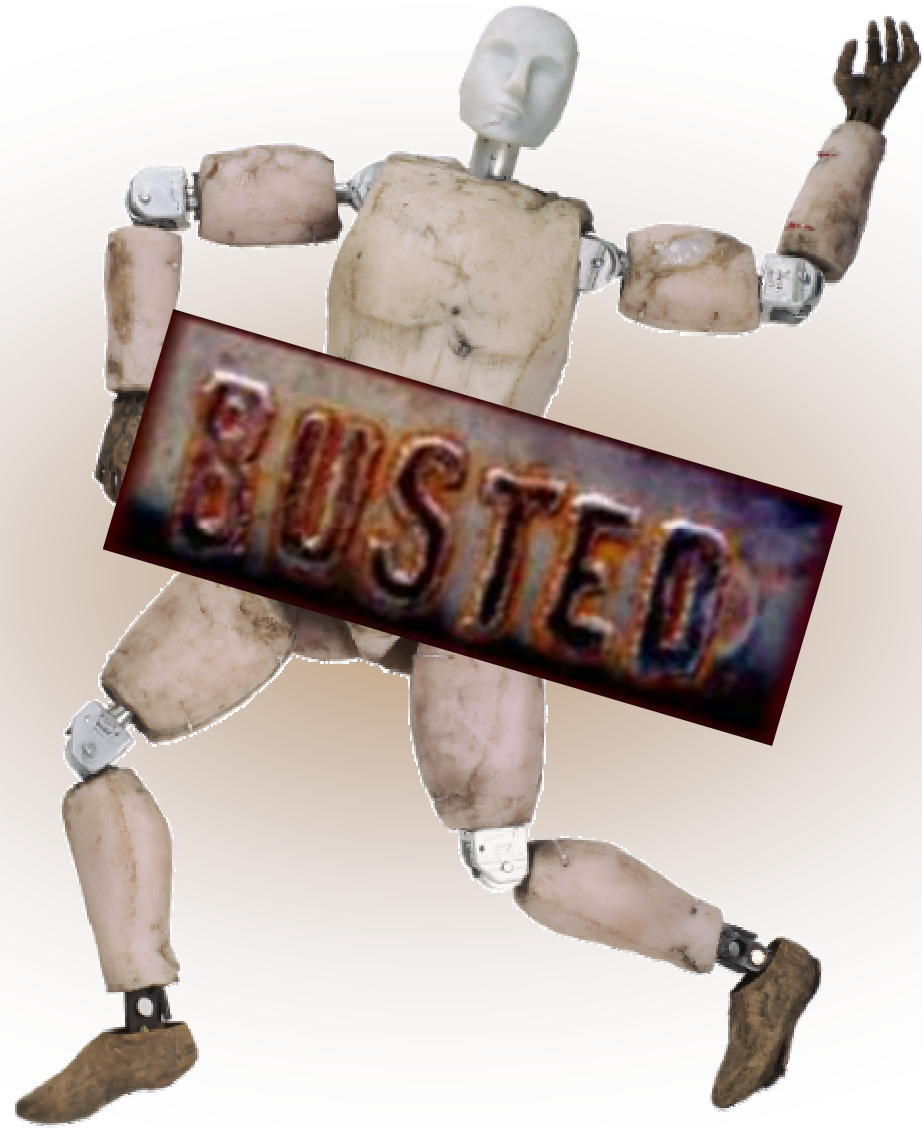
- Enables you to work within Visual Studio
 - ▶ Access RTC capabilities like join project, create work items, run queries, compare versions, view pending changes...
- Manage builds within Visual Studio
 - ▶ Use MS-Build command line builds with Team Concert continuous Integration build engine
 - ▶ Link command line MS-Builds to the Team Concert build toolkit and store results in the Team Concert repository
- Collaborate across teams



MYTH

Team Concert is
~~just for Java~~
~~Developers!~~

Team's



Latest News!!

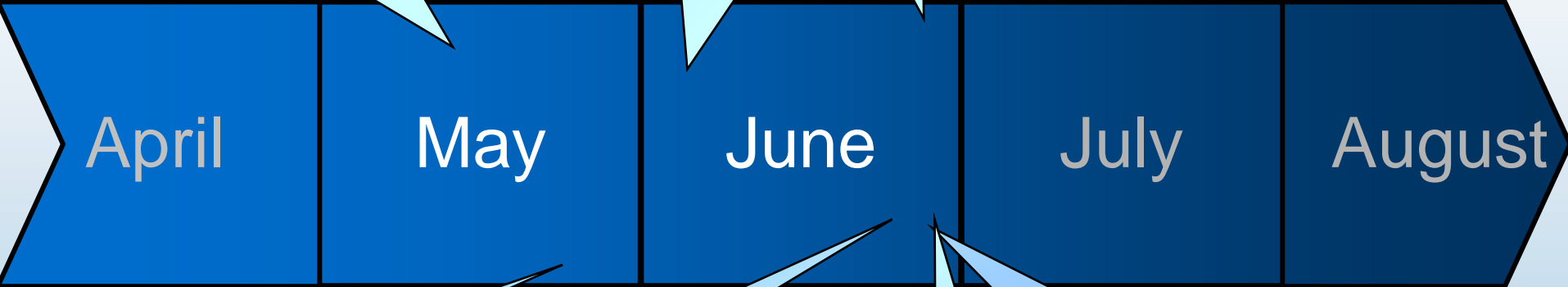
Build Forge 7.1.1
 Rational Automation
 Framework for WebSphere
(May, 09)

New!



ClearCase 7.1.0.2
ClearQuest 7.1.0.2
(June, 09)

Software Analyzer 7.x
(Q3 09)



Insight
(May, 09)

New!

Synergy 7.1
Change 5.2
(June, 09)

Team Concert
Enterprise Server 2.0
(June, 09)

New!

Team Concert 2.0
(June, 09)

MYTH

Build Forge is so much more than a build tool!



IBM Rational Build Forge 7.1.1

Advancing Software Delivery Automation

Released

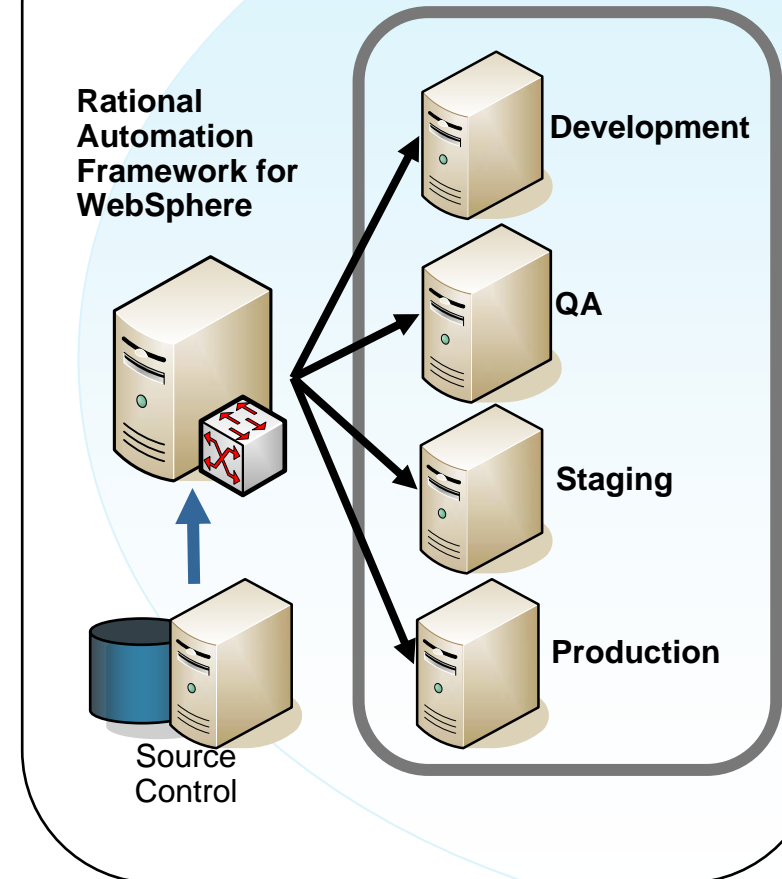
May 2009

Rational Automation Framework for WebSphere

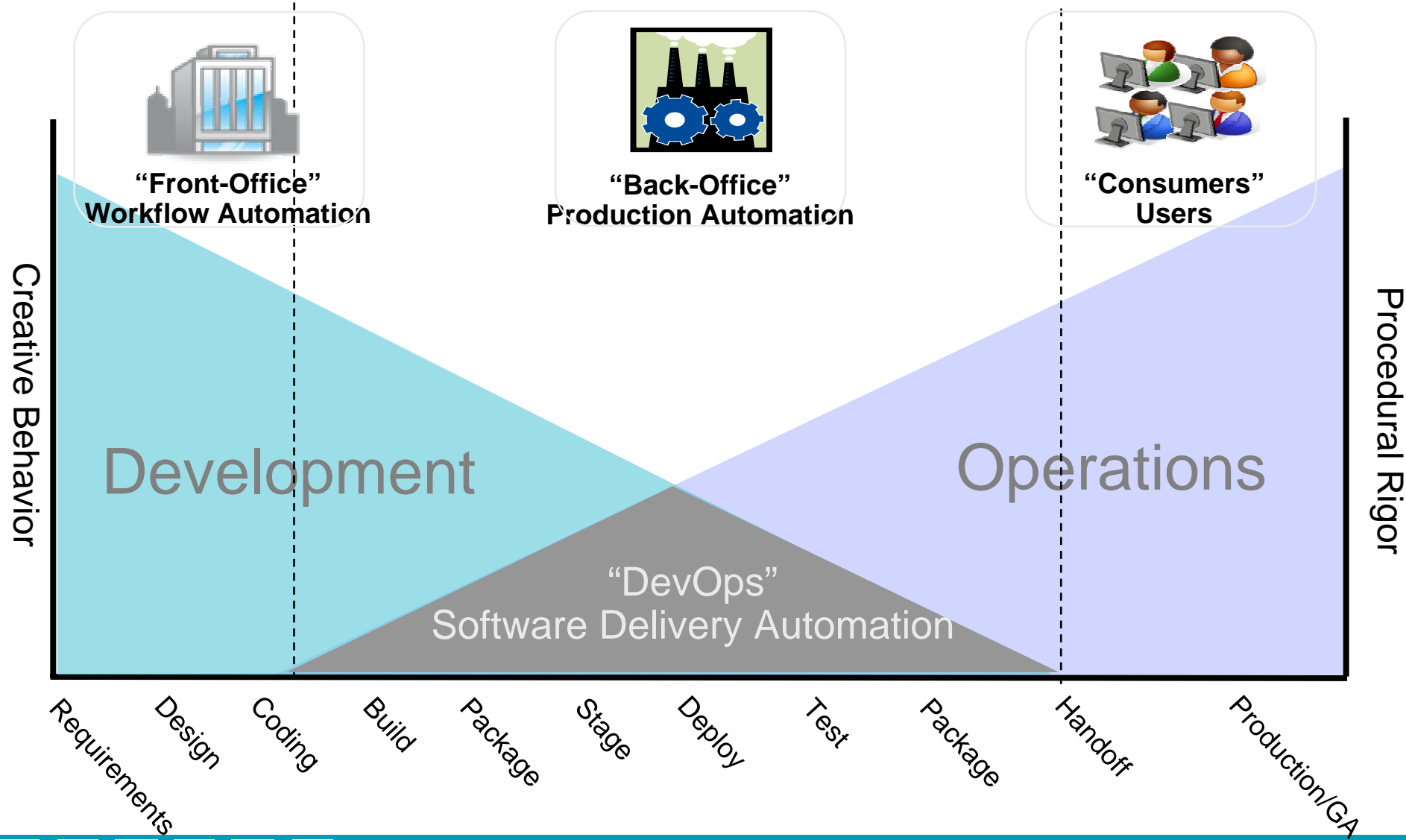
- ▶ Scalable WebSphere Application Server / WebSphere Portal Server administration
 - Multi-cell WebSphere management
 - Environment build out management
- ▶ Reduce risk of patching and upgrades
 - Change management for WebSphere configuration
 - Auditable configuration changes
- ▶ Minimize human interaction and error
 - Application deployment automation
 - Configuration capture and comparison
- ▶ Ease identification of application issues vs. infrastructure issues
 - Able to easily roll back configuration changes

New!

Architectural Overview

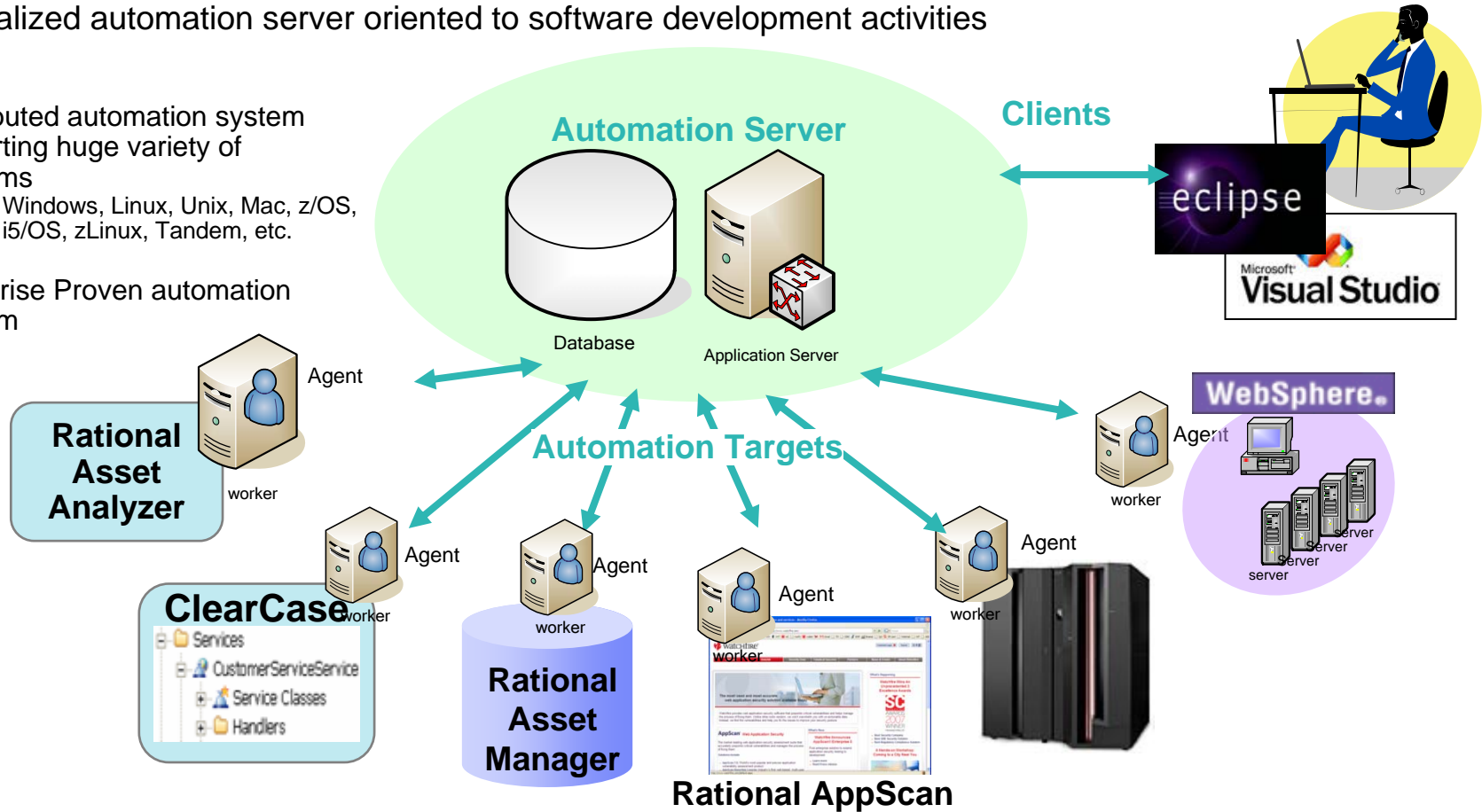


Build Forge is for software process automation



Leveraging Build Forge

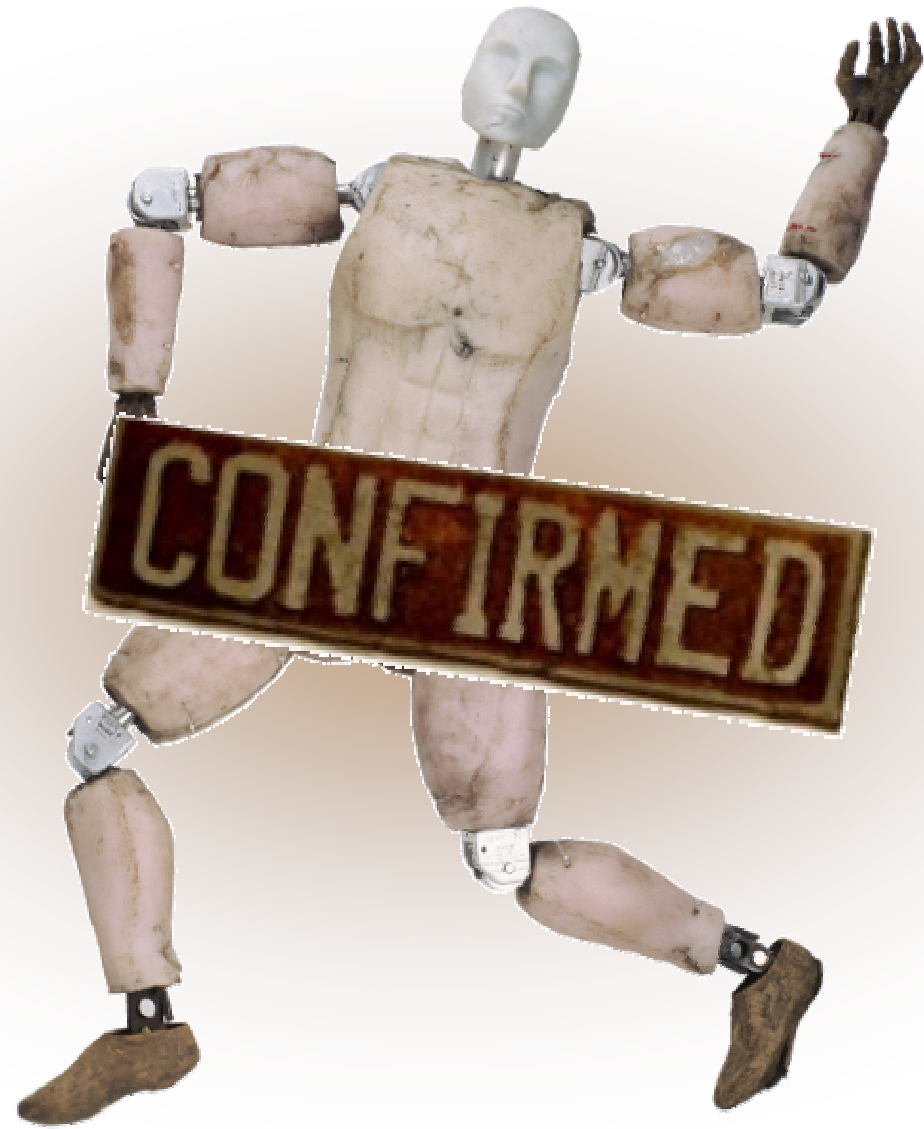
- Centralized automation server oriented to software development activities
- Distributed automation system supporting huge variety of platforms
 - Windows, Linux, Unix, Mac, z/OS, i5/OS, zLinux, Tandem, etc.
- Enterprise Proven automation platform



Build Forge provides an adaptive framework that allows development teams to standardize and automate repetitive tasks, share essential product information, and respond quickly to change.

MYTH

Build Forge is so much more than a build tool!



IBM Rational Change 5.2

- Ready-to-use schemas, processes and procedures that embody the “best practices” based on expertise from IBM and thousands users
 - ▶ Enterprise Change Process, industry proven lifecycle, is now a standard lifecycle
 - ▶ Enterprise Change Process, advanced customization features now become out of the box capabilities
 - ▶ Powerful reporting including CR Burn Down Charts and CMMI level 4 metrics
- Security Enhancements allowing organizations to open a Change to subcontractors or suppliers
 - ▶ Folder security for Queries, Reports and Report Formats
- Usability & Performance improvements facilitating end user acceptance
 - ▶ Graphical process help
 - ▶ Extended Text support
 - ▶ Performance improvement for loading large submit and show dialog boxes (up to 40%)

IBM Rational Synergy 7.1

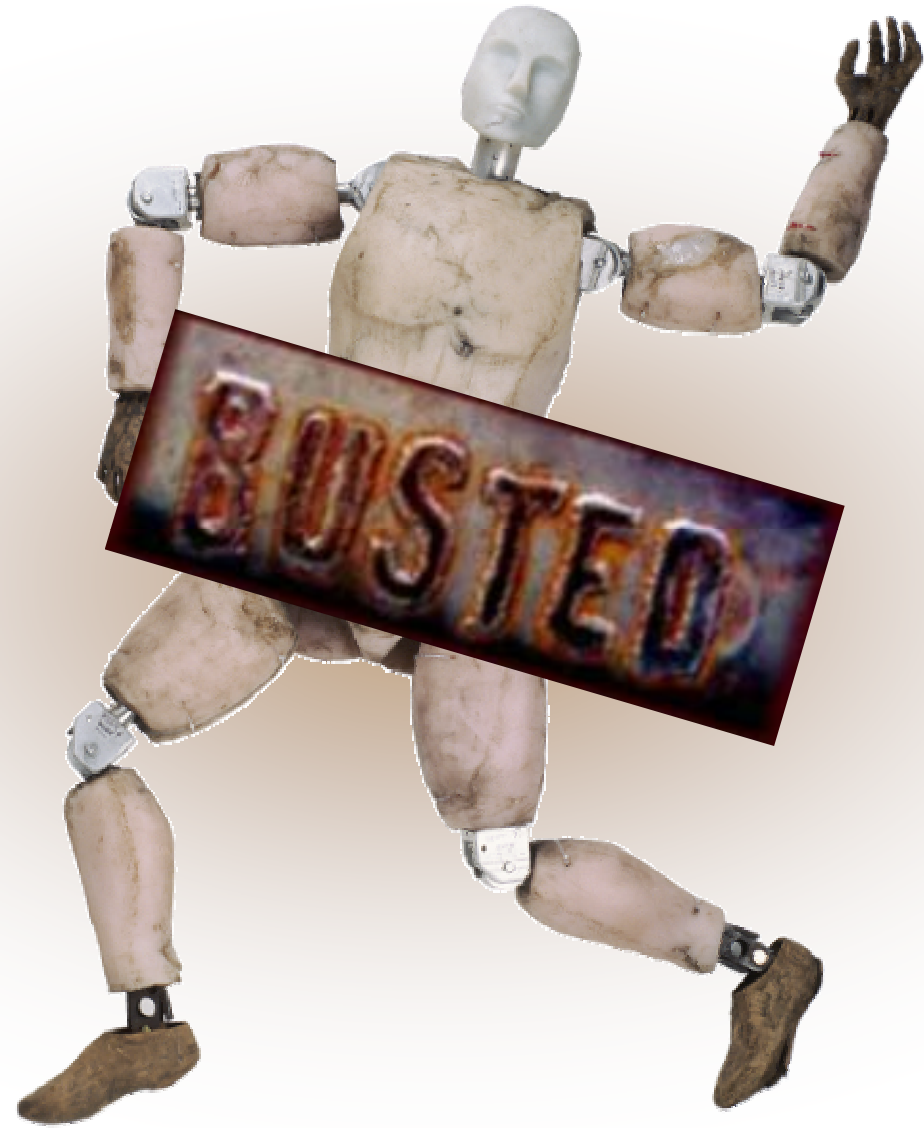
Available

June 2009

- Unify global teams with enhanced Web Mode support for:
 - ▶ Link Based Work Area
 - ▶ Extended CLI commands
 - ▶ Synergy CCM server administration improvements
 - ▶ Ability for user to change their password
- Improved support for Component Based Development processes with:
 - ▶ Improved workflow across teams developing, sharing, reusing, modifying components
 - ▶ Easily add and manage sub components
 - ▶ Better support for baselines including multiple releases

MYTH

Team Concert
only scales to
250!

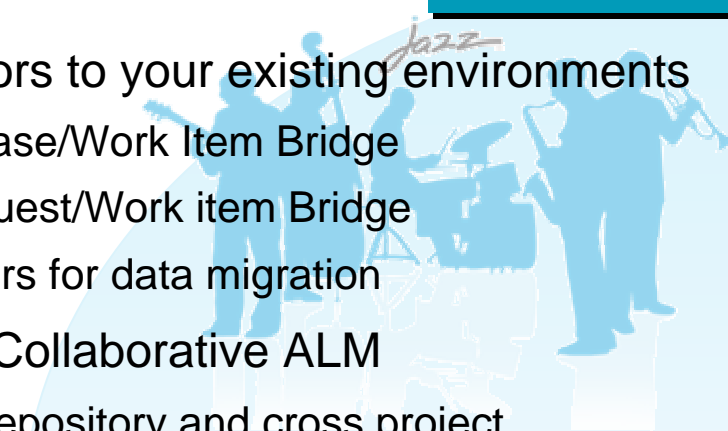


IBM Rational Team Concert 2.0

Available

June 2009

- Deliver Global Enterprise Readiness
 - ▶ Enhanced Security
 - ▶ Enhanced Scalability and Extensibility
- Enhanced agile planning
 - ▶ New Taskboards and enhanced SCRUM
 - ▶ Release planning support
 - ▶ Plan risk assessment
 - ▶ Web access to iteration plan editing and builds
- Connectors to your existing environments
 - ▶ ClearCase/Work Item Bridge
 - ▶ ClearQuest/Work item Bridge
 - ▶ Importers for data migration
- Support Collaborative ALM
 - ▶ Cross repository and cross project dashboards
 - ▶ Tighter RQM and RRC integrations



New!

RTC Enterprise Server 2.0

Scale to new heights

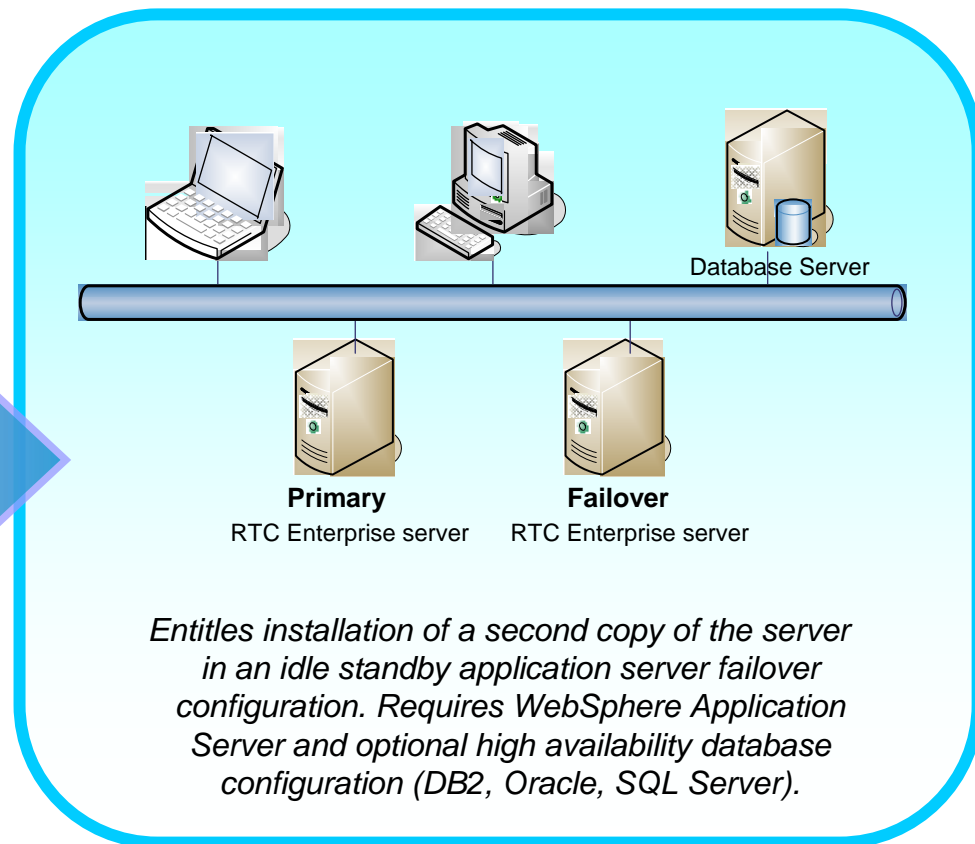
Available
June 2009

Consolidate & Lower TCO by deploying a centralized, consumable, infrastructure.

[More details on Jazz.net](#)

- Thousands of users
- Millions of files and work items
- Unlimited file size
- Hundreds of builds
- Basic HA (failover)

- New 64-bit server platforms
- New hardware platform support
 - ▶ IBM System p



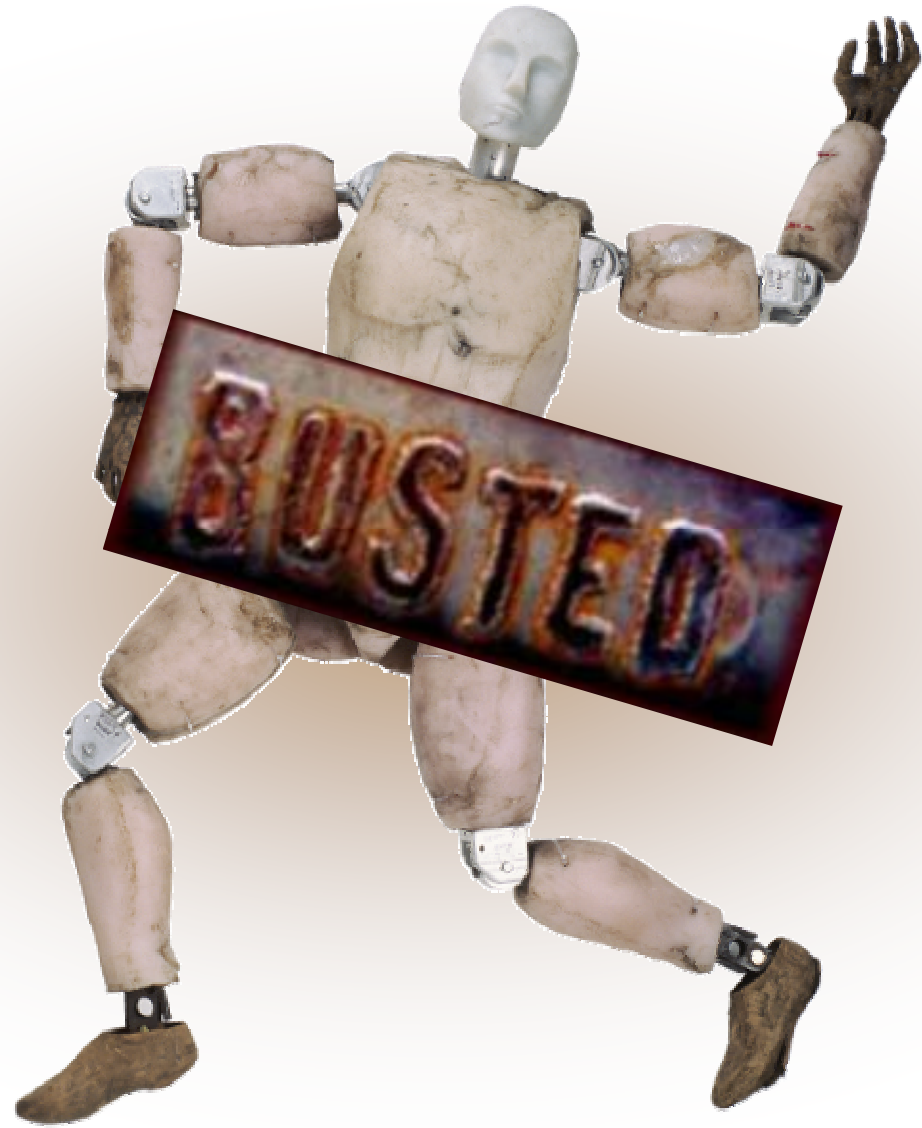
Team Concert Server Editions

		Express-C	Express	Standard	New! Enterprise
		Small Teams	Mid Sized Teams	Corporate Teams	Enterprise Teams
Maximum Users	<i>Developers</i>	10	50	250	unrestricted
	<i>Contributors</i>	unrestricted	unrestricted	unrestricted	unrestricted
Database	<i>Included</i>	Derby	DB2	DB2	DB2
	<i>supports</i>		SQLServer, Oracle	SQLServer, Oracle	SQLServer, Oracle
Application Server	<i>Included</i>	Tomcat	Tomcat	Tomcat	Tomcat
	<i>supports</i>		WebSphere	WebSphere	WebSphere
Customizable Dashboard Mashups		1 per project	1 per project	Unlimited personal project and team	Unlimited personal project and team
Advanced Reports and Customization				✓	✓
Customizable work item workflow				✓	✓
Plan risk assessment				✓	✓
Floating Licenses Available				✓	✓
LDAP import / synchronize				✓	✓
HTTP proxy support				✓	✓
High Availability					✓*

MYTH

Team Concert
~~only scales to~~
~~250!~~

Scales!

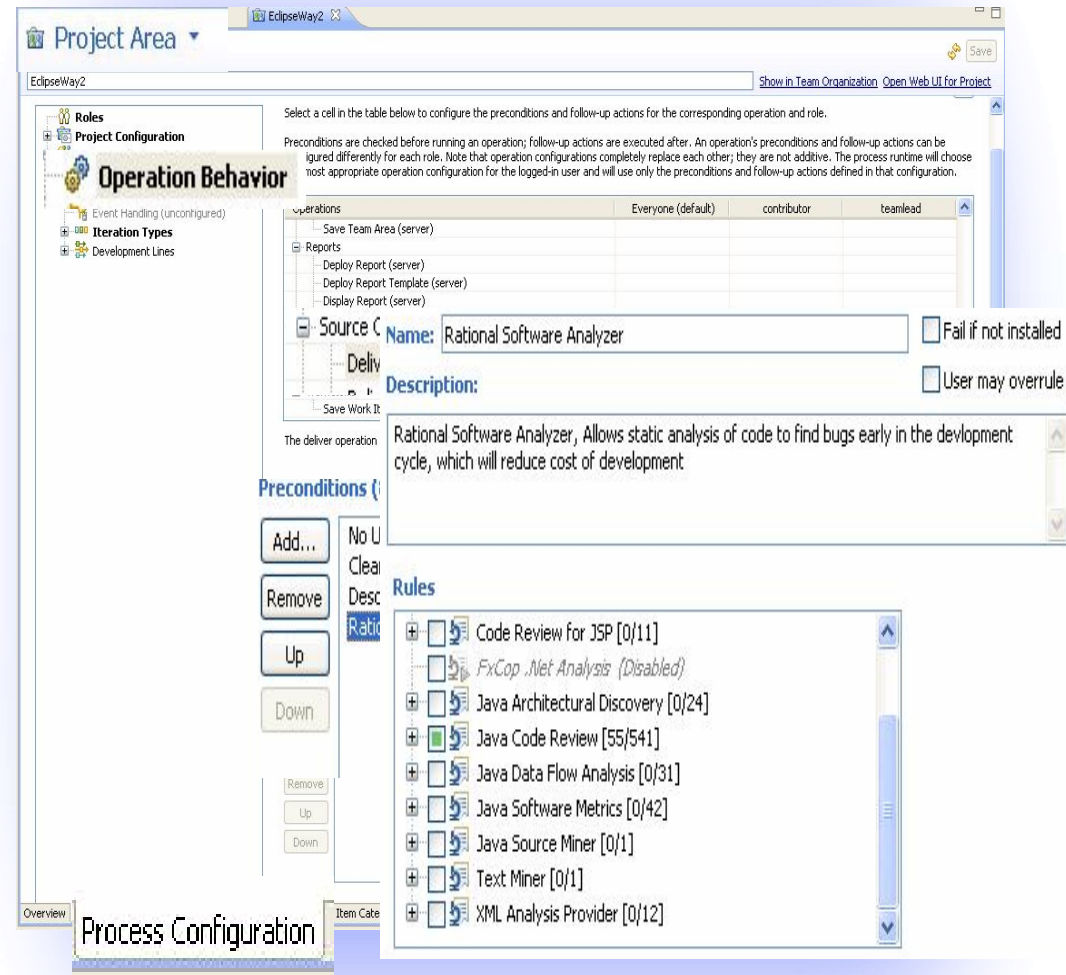


IBM Rational Software Analyst

Available
Q3 2009

New RTC Integration provides:

- Adherence to Corporate Coding Standards through
 - ▶ RTC Checkin policy
 - ▶ RTC build integration
- Team Mentoring through shared data rule sets
 - ▶ RTC will push updated RSAR Rule Sets to Developers
- Efficient Incremental Analysis
 - ▶ RTC change sets analyzed



ClearCase and ClearQuest 7.1.0.2

Available
June 2009

Rational. ClearCase

- CMServer for CCRC
 - ▶ 500 User benchmark!!
 - ▶ Load balancing and failover support
 - ▶ Administrator Web UI
- CCRC
 - ▶ 2X improvement in Workspace loads and updates
 - ▶ Deliver Baseline Support
 - ▶ MultiSite Mastership Management support

Rational. ClearCase for z

- Improved capabilities with:
 - ▶ Impact analysis for COBOL and PL/I Builds from TSO Client
 - ▶ Parameterized Build Support for RDz client
- Improved performance TSO Client
 - ▶ file transfer loads
 - ▶ check in/check out

Rational. ClearQuest

- Improve collaboration with:
 - ▶ Change Request to Jazz Work Item Bridge
 - ▶ ClearQuest data in Dashboards

New!

Available
May 2009

IBM Rational Insight

Code Contributions

Parameters
Program:
Project:
Changed SLOC per User
Developer:

SLOC By Component

Parameters
Program:
Project:

Requirements and Related UCM activities

Parameters

Program:

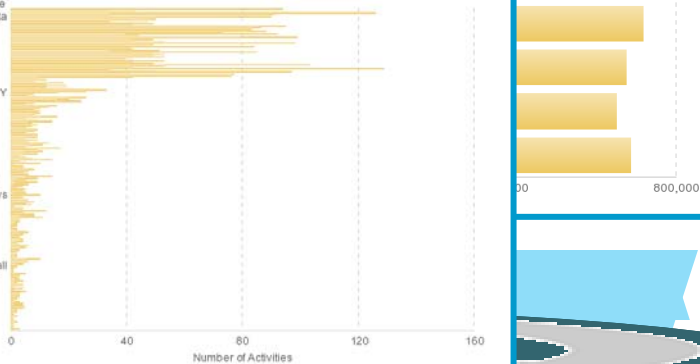
Project:

FEAT1510:Enable projections in data

FEAT28580:INVENTORY NON AVAILABLE

FEAT41372:Provide web based viewing of displays

FEAT51986:The system shall track the last date a report was printed.



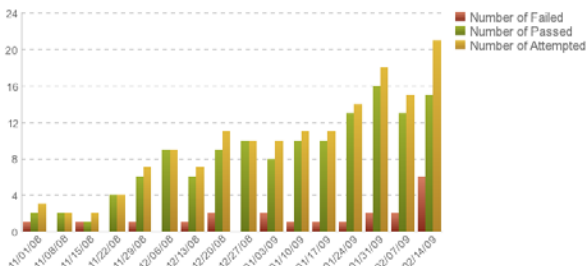
Build Health

Parameters

Program:

Project:

Number of Builds Passed/Failed



Integrated Software & Product Lifecycle Management Platform

- Rational**

Build Forge*
- Rational**

ClearQuest
- Rational**

Team Concert
- Rational**

ClearCase
- XML

MS Project

Partners
- Rational**

Requirements Composer
- Rational**

Quality Manager

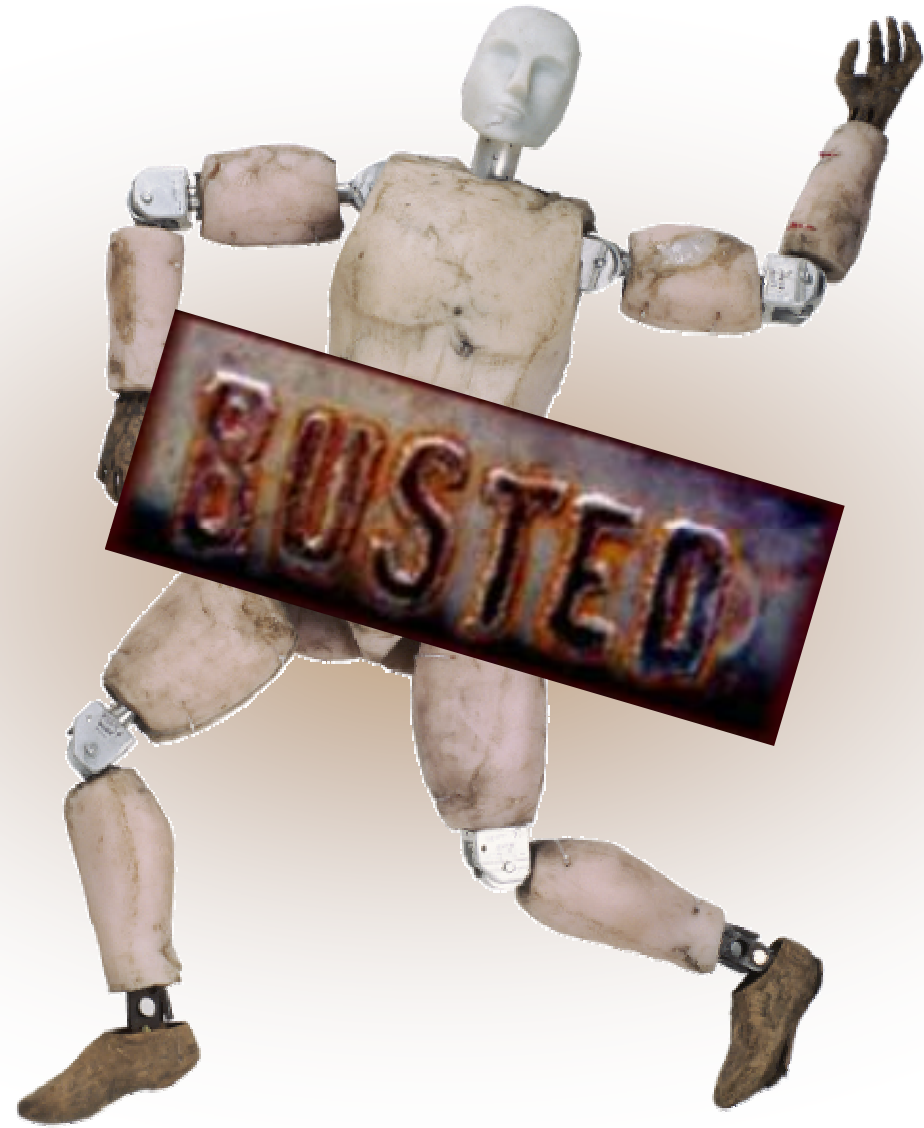
3rd Party Lifecycle tools

*...and more



MYTH

One
Configuration
Management
tool fits all!



Configuration Management Unique Qualities

Research shows that companies use a variety of SCM tools to meet varying project needs.

IBM Rational has the broadest set of solutions to meet these varying needs.

Each with their own unique Qualities

Rational. ClearCase

Ideal for custom Enterprise SCM processes with:

- Dynamic Views
- Unlimited Branching
- Broadest OS support

Rational. Synergy

Perfect fit for proven OOTB Task & Component based CM process with:

- CMMi and SPICE compliance

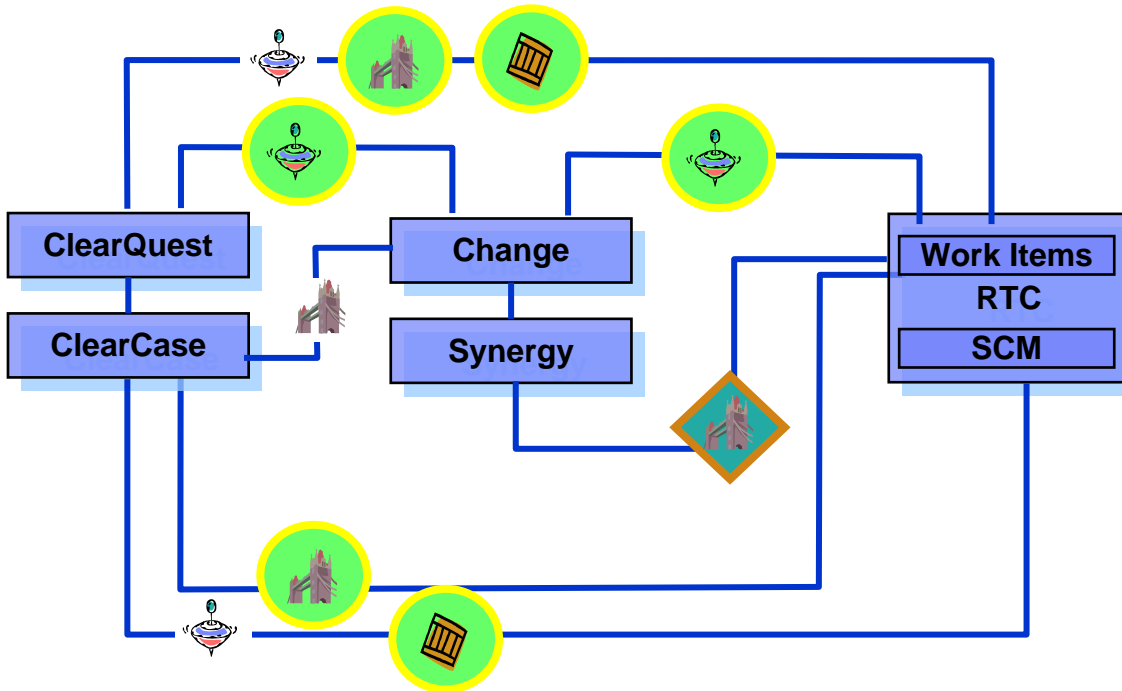
Rational. Team Concert

Day 1 productivity with:

- Agile Planning and Risk management
- Team Collaboration and Awareness
- Project Health & Transparency

Our Connectors Strategy

Working in Harmony



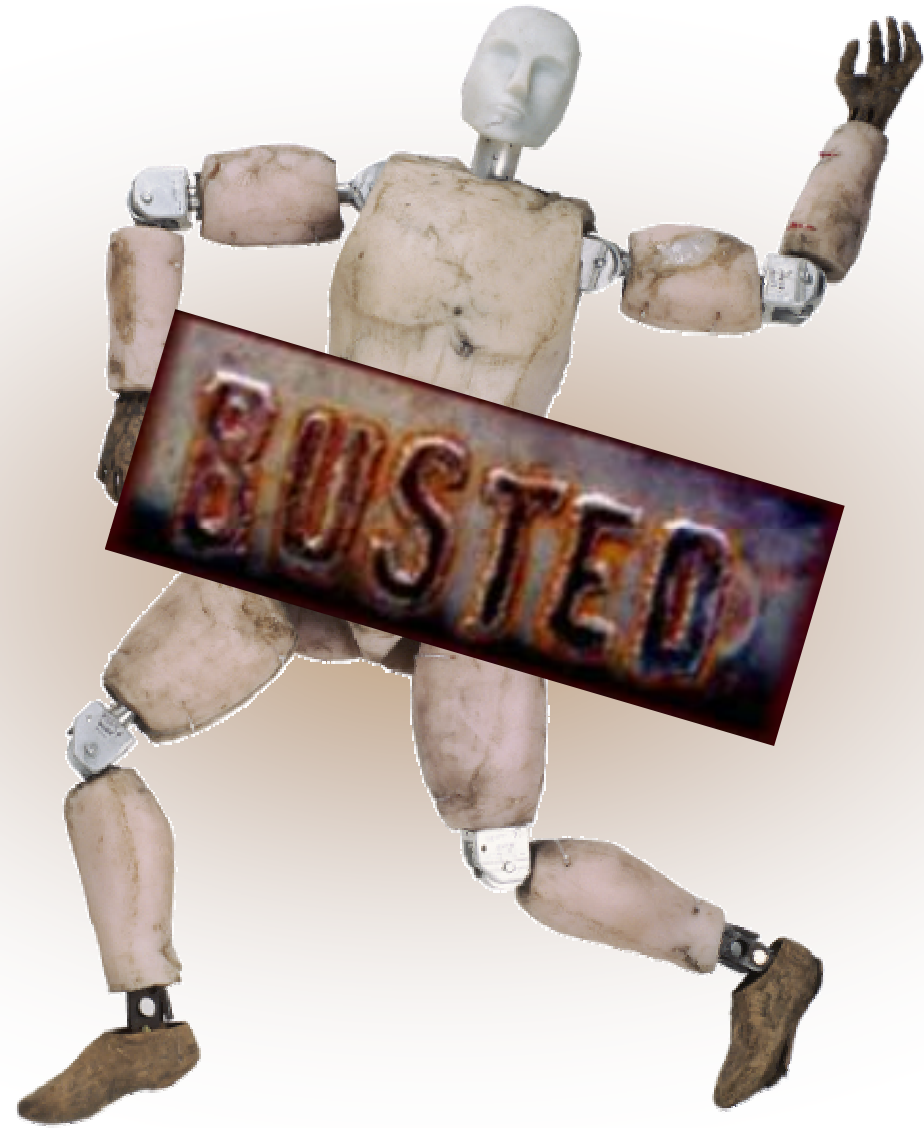
Synergy and Change Connectors:
 ClearQuest
 Quality Manager
 Team Concert

Team Concert Bridges
 ClearQuest
 ClearCase

<u>Type</u>	<u>Status</u>
Synchronizer – bi-directional replication of data	Existing
Bridge – Traceability connections	New
Importer – copy of data	Planned

MYTH

One
Configuration
Management
tool fits all!

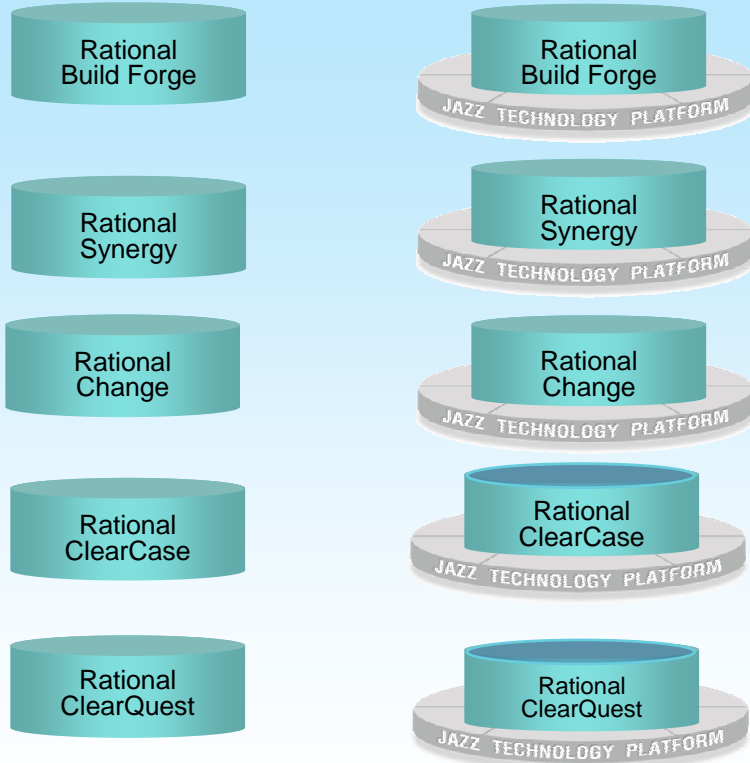


The evolution of the IBM Rational Software Delivery Platform

1

Existing Offerings

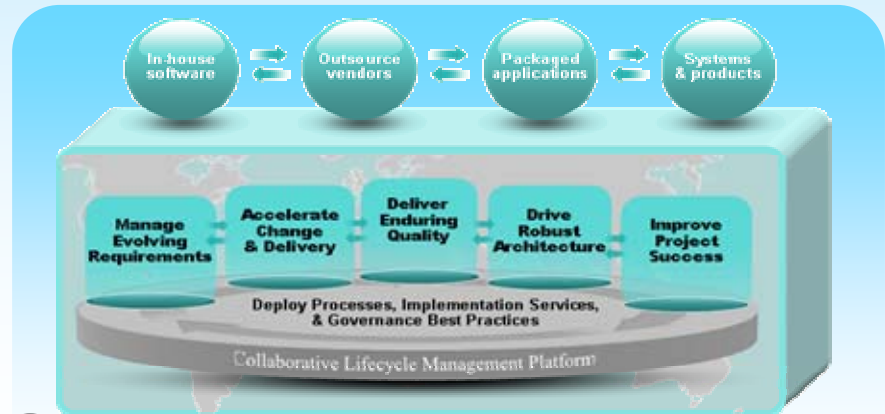
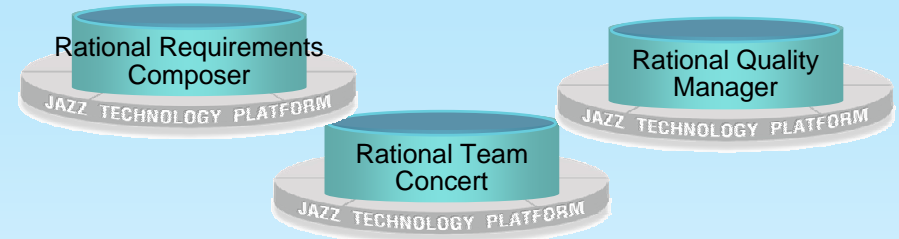
Infuse Jazz Technology



2

New Offerings

Built on Jazz Technology

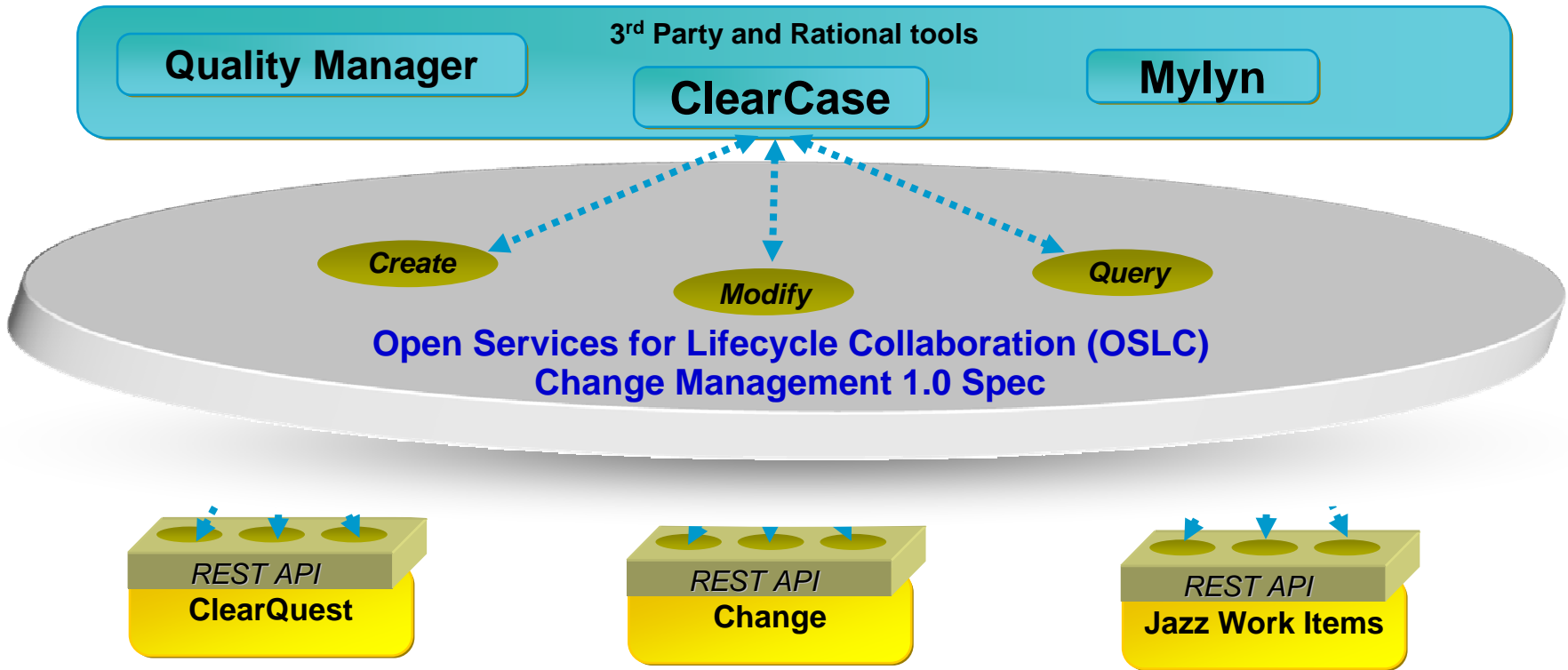


3

Connect all offerings and 3rd party with Open Services

Integration Strategy

Open Services for Lifecycle Collaboration (OSLC) Change Management 1.0

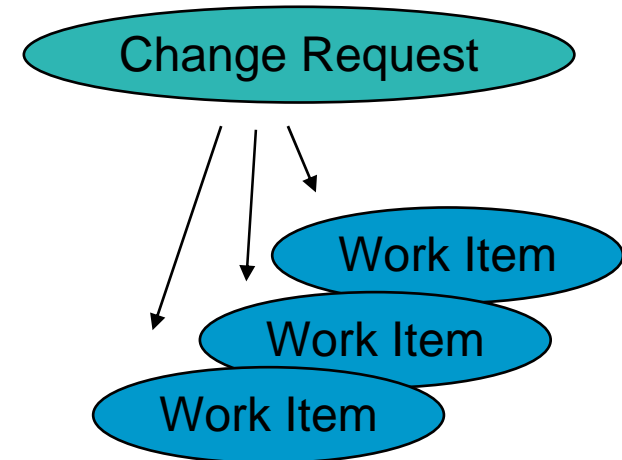


Visit us at:
<http://www.open-services.net>

ClearQuest Directions

Next Major release:

- ▶ Infused with Jazz Collaborative ALM Capabilities (also shipped in RTC)
 - Work Items
 - Agile Planning
 - Open Integrations (WI- Subversion)
 - Dashboards/Feeds/Discussion
- ▶ Plus new capabilities
 - CQ Requests – Jazz Work Item bridge
 - Unified Web UI
 - CQ Request data in Dashboards



The information on the new product is intended to outline our general product direction and it should not be relied on in making a purchasing decision. The information on the new product is for informational purposes only and may not be incorporated into any contract. The information on the new product is not a commitment, promise, or legal obligation to deliver any material, code or functionality. The development, release, and timing of any features or functionality described for our products remains at our sole discretion.

ClearCase Directions

Common Client

An Eclipse based Common UI for all view types
Web Views, Dynamic Views, Snapshot views

Performance

CM Server Infrastructure
Load Balancing, CM API

Security

Configurable role based security for ClearCase artifacts
ClearCase Access Control List

Infuse with Jazz

Bridge to application lifecycle management
Plan, Construct, Refine, Deploy using Jazz

Global Admin

Monitor & administer distributed ClearCase assets
Multisite Administration

More information in:



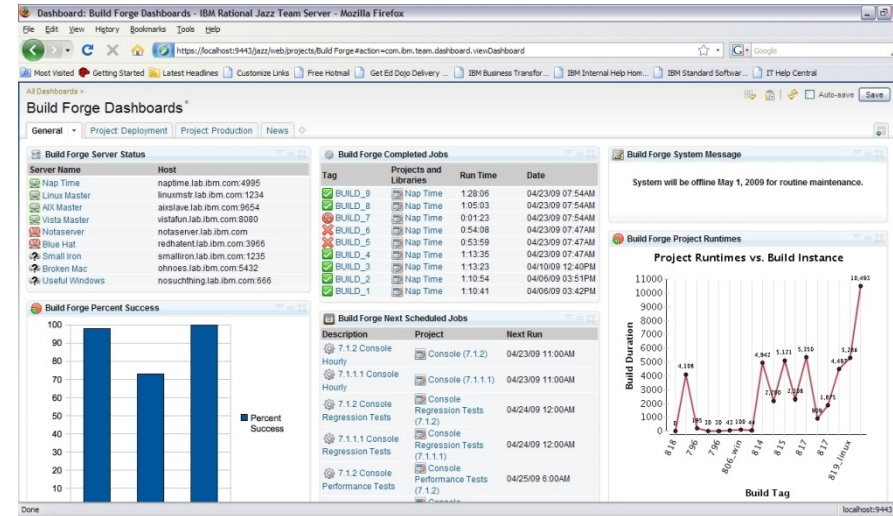
Rational Labs

The information on new product capabilities are intended to outline our general product direction and it should not be relied on in making a purchasing decision. The information on the new product is for informational purposes only and may not be incorporated into any contract. The information on the new product is not a commitment, promise, or legal obligation to deliver any material, code or functionality. The development, release, and timing of any features or functionality described for our products remains at our sole discretion.

Build Forge Directions

Next Major Release:

- ▶ Customizable Views
 - Jazz-powered Dashboarding system provides customizable viewlets to surface data as users want to consume it
- ▶ Integration with Rational Insight
 - Build Forge data available to view in context with that of other Insight-enabled products to provide more holistic view of development environment status and trends
- ▶ Developer Cloud Enabled
 - Integration and extensions to allow Build Forge to seamlessly automate jobs in and for the IBM Rational Developer Cloud



The information on new product capabilities are intended to outline our general product direction and it should not be relied on in making a purchasing decision. The information on the new product is for informational purposes only and may not be incorporated into any contract. The information on the new product is not a commitment, promise, or legal obligation to deliver any material, code or functionality. The development, release, and timing of any features or functionality described for our products remains at our sole discretion.

Collaboration Opportunities

Design Partner Program

Lab Advocacy Program

Board of Advisors

VoiCE Events

Rational Software Conference

jazz.net

developerWorks

Beta Programs

[RFE Community](#)

Global Rational User Groups

Rational Cafe



Rational Team Concert

Rational ClearCase
 Rational ClearQuest
 Rational Build Forge
 Rational Software Analyzer

→ Learn more about [Rational Customer Programs](#)

Change & Release Mgmt Partners

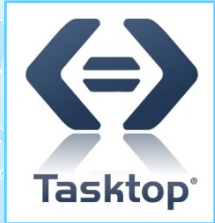
Rational. Team Concert



Rational. ClearCase



Rational. ClearQuest



Rational. Build Forge



IBM Rational Software Conference 2009 As Real as It Gets!



Free Trial of Change and Release Management Web-Based Training Portal

- All change and release management track attendees are entitled to a free trial to our web-based training portal
- Courses include:
 - ▶ Build Forge
 - ▶ ClearQuest
 - ▶ ClearCase
 - ▶ Synergy
 - ▶ Change

Rational. software

The screenshot shows the IBM Rational software training portal. At the top, there is a navigation bar with the IBM logo, a location selector for 'United States', and a search bar. Below the navigation bar, there are several menu items: Home, Solutions, Services, Products, Support & downloads, and My IBM. A sidebar on the left contains a list of training categories: Training, Course catalog, Courses A - Z, Courses by location, Certification, e-Learning, Training search, Training worldwide, and Conferences & events. The main content area displays a course description for 'Essentials of Creating a Project with IBM Rational Build Forge'. It includes a description, a link to 'Add to my training plan', and an 'Overview' section with a list of course details: Special note, Audience, Prerequisites, Skills taught, Course outline, Machine requirements, and Course materials. On the right side, there is a 'My IBM' section with a link to 'Edit your profile' and a 'We're here to help' section with a 'Call me now' button.

MYTH

IBM Rational
customers are
the BEST!



Thank You

© Copyright IBM Corporation 2009. All rights reserved. The information contained in these materials is provided for informational purposes only, and is provided AS IS without warranty of any kind, express or implied. IBM shall not be responsible for any damages arising out of the use of, or otherwise related to, these materials. Nothing contained in these materials is intended to, nor shall have the effect of, creating any warranties or representations from IBM or its suppliers or licensors, or altering the terms and conditions of the applicable license agreement governing the use of IBM software. References in these materials to IBM products, programs, or services do not imply that they will be available in all countries in which IBM operates. Product release dates and/or capabilities referenced in these materials may change at any time at IBM's sole discretion based on market opportunities or other factors, and are not intended to be a commitment to future product or feature availability in any way. IBM, the IBM logo, Rational, the Rational logo, Telelogic, the Telelogic logo, and other IBM products and services are trademarks of the International Business Machines Corporation, in the United States, other countries or both. Other company, product, or service names may be trademarks or service marks of others.

Rational partner solutions support for

Rational. Team Concert



Enhance team collaboration with direct, per-project document linkages to Microsoft® SharePoint® and Lotus® Quickr® libraries



Support heterogeneous environments with bidirectional integration with the JIRA change management system



Analyzes project and resource data to provide accurate estimation and enhanced project control



Enable automated governance to insure compliance and minimize business risk around highly flexible and distributed development environments



Automated assessment and metrics for technical quality and team performance



Provides open source IP management



Allows bi-directional synchronization of defects and workflows with HP Quality Center®

Rational partner solutions support for

Rational. ClearCase

Rational. ClearQuest



Accelerates CCRC WAN performance



Provides Integrated Change Management with WindChill® PDM system



Enables NetApp Storage environment for CC VOBs



Allows streamlined sharing of info between CC & CQ



Provides BusinessObjects Crystal Reports reporting for Rational ClearQuest



Provides integration to Tasktop's Mylyn-based task management system

Rational partner solutions support for



Drive analysis of open source IP compliance from BuildForge



Enable use of virtual lab automation with Build Forge



Drive execution of HP Quality Center tests from BuildForge



Enable use of virtual lab automation with Build Forge

Virtutech

Enable deployment through BuildForge to Simics simulation platform