



Improved Manual Test with Rational Quality Manager

Balaji Srinivasan
IBM Rational

IBM Software

Innovate2012

The Premier Event for Software and Systems Innovation

Next  NOW!



Agenda

- Overview
- Prerequisites
- Supported Domains
- Highlights of the capability
- Enablement
- Demo

Overview

- ❑ A new approach to building Test Scripts through RQM without the need for writing the scripts.
- ❑ A quick way to Author Tests, while reducing chances of Human error.
- ❑ Provides mechanism to Capture Data or Image comparison information
- ❑ Provides standardization to the scripts
- ❑ RQM leverages RFT to auto-generate statements based on user actions on the application

Prerequisites

- User needs to install RQM 4.0 and RFT 8.2.2
- User needs to know basics of RQM and creation of a manual test in RQM
- User needs to know basics of RFT and RFT recorder
- User needs to connect the RFT adapter to RQM server

Supported domains

- ❑ Supports Web and Java domains
- ❑ Recording HTML applications along with Dojo and Java applets
 - Recording can be done on
 - Internet Explorer version 9.0 ¹
 - Firefox versions till 10.0 ²
- ❑ Support for Java applications (Swing, SWT/Eclipse, AWT)

¹ IE version 6 and above

² Firefox 9.x is not supported

Highlights of the capability

- Generation of Manual Test script
- Automatic Image capturing with Object highlight
- Live updation of recorded steps in RQM
- Full Images on Hover of thumbnails/links
- Insertion of manual steps from RFT recorder
- Insert steps into an existing manual script via recording

Highlights of the capability (cont..)

- ❑ Data Verification Point support (Text, State, List Items, Drop-down Items)
- ❑ Image Verification for complex controls like tree/table
- ❑ User/Project Preferences to control MTSR settings in RQM
 - ❑ Images can be shown in RQM as
 - ❑ Thumbnail
 - ❑ Full size
 - ❑ Attachments

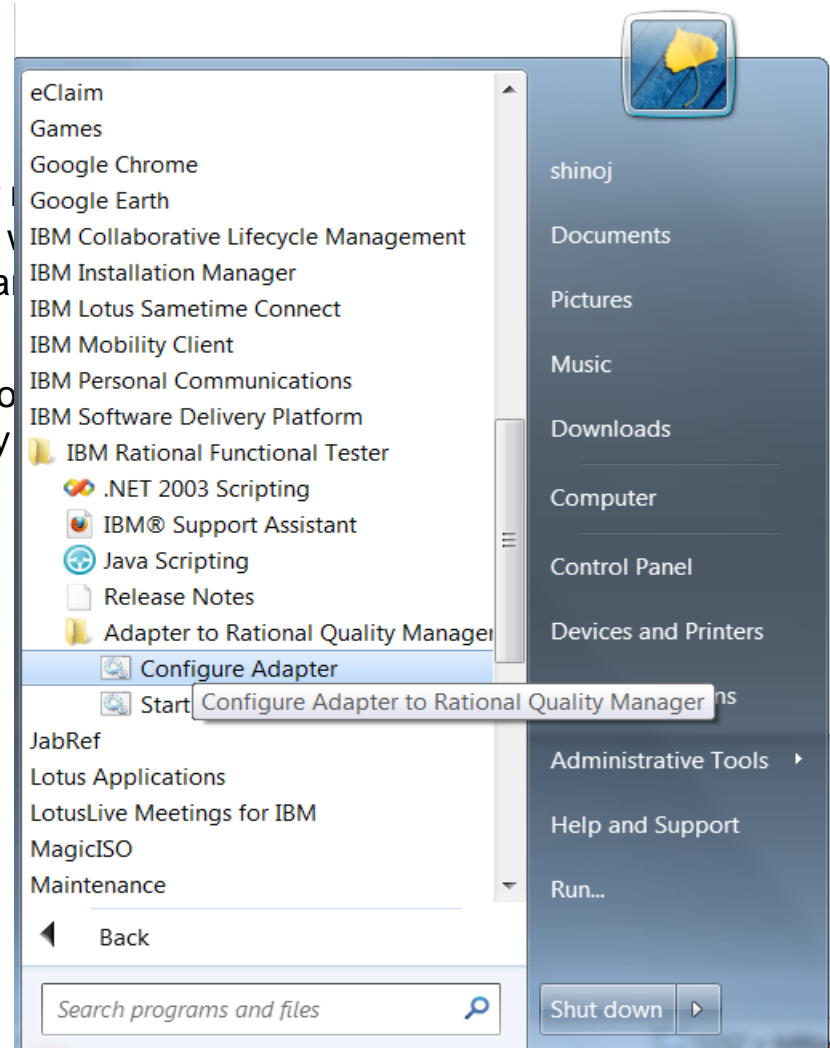
Application Enablement

- Click and Record
- Automatic enablement support for
 - Internet Explorer 32 and 64 bits
 - Firefox 32bit
 - Java applications
- Manual enablement is available as before, refer [documentation](#) for complete details

Configuring/Starting Adapter on the test machine

Bring up the RFT adapter for RQM in the test machine. machine that runs RQM. RQM can connect to any test be initiated from RQM, RQM should know the machine step is to start an RFT adaptor on the test machine. Start configuring and then starting it.

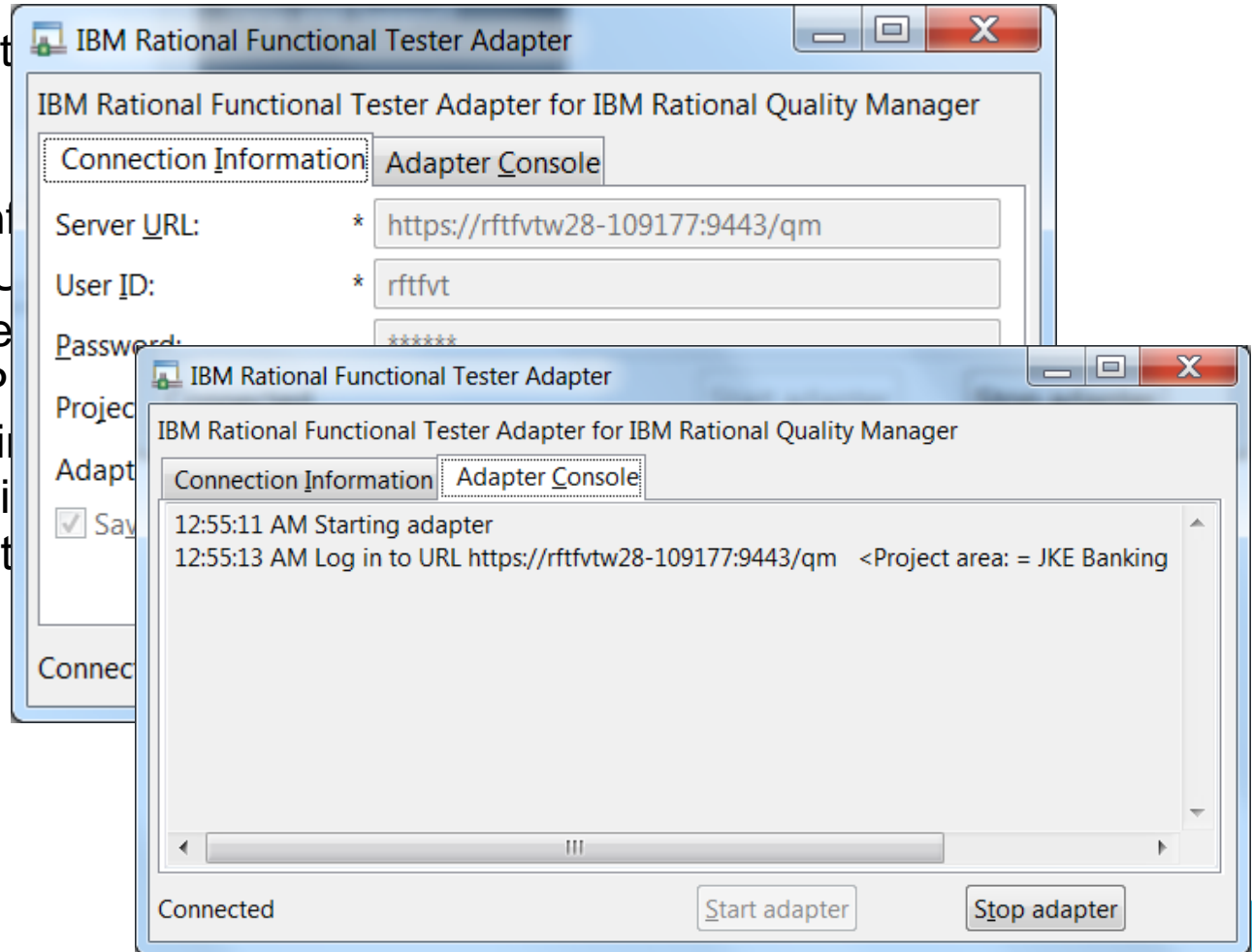
Bring up the 'Configure Adaptor' from Windows->All Programs->Rational Functional Tester->Adaptor to Rational Quality



Starting the Adapter

Rational Functional Tester

Enter the Connection Information and Password. The Server URL and User ID from the manual script will be created. Once the connection is established, click on the 'Project Areas Available in Adapter' area. Once the connection is established, click on the 'Start Adapter' button to start the adapter.



Creating Manual Test from RQM

Create an empty manual scrip

RQM

The screenshot shows the IBM Rational Quality Manager (RQM) interface. The main window is titled 'JKE Banking (Quality Management)' and displays a test script named '26: BuyMobileFromEbay'. The script is in a 'Draft' state. A 'Record Manual Script' dialog box is open, allowing the user to configure the manual test script recording process. The dialog box includes the following fields:

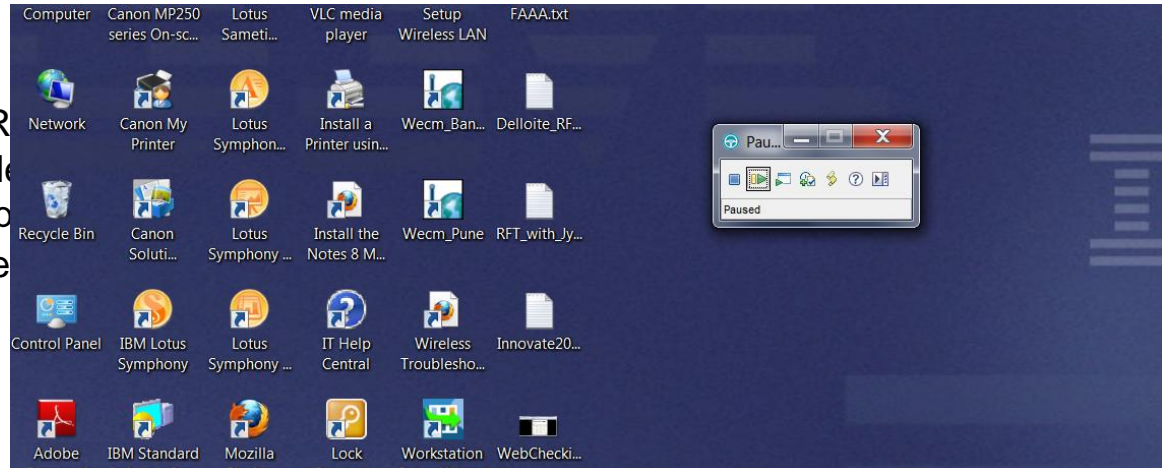
- Adapter:** IBM-TJMIK9605QL
- Images:** Expected Result column
- Show As:** ThumbNail

The dialog box also contains instructions: 'To create a manual test script with the recorder, you must have a Rational Functional Tester adapter that is enabled for recording, and the adapter must be started. Select an adapter to continue.' and 'Specify where to store the images that are captured during the recording process.' and 'Specify the display format for images in the Description or Expected Results columns.'

The background interface shows the 'Test Script Overview' tab with fields for State (Draft), Originator (rftvrt), Owner (Unassigned), and Test Data (Unassigned). The 'Manual Steps' section is visible at the bottom, with columns for Step, Description, and Expected Results.

Recording on the test machine

Once the recorder is started from R... and the Manual Test Script Recorder... notice that an orange rectangle app... user the visual cue that the recorder...



- Stop
- Pause
- Start Application
- Insert Verification Point
- Insert Manual Step
- Display Help
- Toggle Toolbar display size
- Copy Selected Text
- Clear All Monitor Text
- Save Monitor Text
- Monitor Message Preferences

Getting Started

To Record a script:

1. Select [Start Application] to configure and start the application under test
2. Record the script
3. Select [Stop] to stop recording

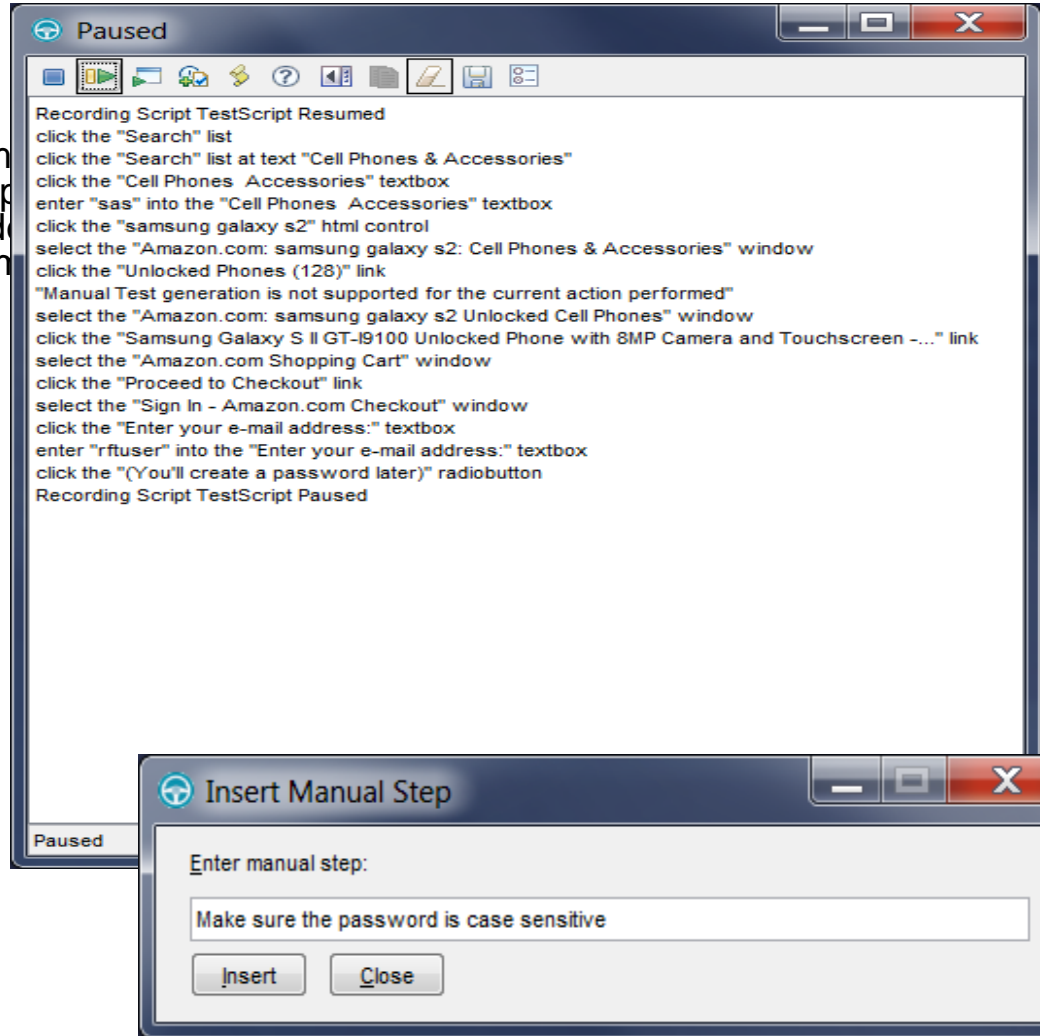
You can also...

- Select [Pause] to pause recording
- Select [Insert Verification Point] to add verification points to your script
- Select [Insert Manual Step] to data-drive your script
- Select [Copy Selected Text] to turn off Getting Started help

Recording Script TestScript Started

Recording the action

The recorder listens to every action performed every step. It also captures the screen snapshots interacted during the recording. The recorder generates the script. The recorder also uploads the script during recording.



Manual steps in RQM

To see that the steps and images are uploaded to the RQM Manual script editor, pause the recorder and bring up the RQM browser that is minimized during the recording. Notice that the steps and the images appear in the Manual script.

The screenshot shows the RQM Manual script editor interface. At the top, there is a navigation bar with the following items: Project Dashboards, Requirements, Planning, Construction, Lab Management, Builds, Execution, Reports, and Change Requests. Below the navigation bar, the main content area is titled "Formal Review" and contains the instruction: "List the people who will be reviewers and approvers of this content and define your approval process." Below this, there is a section titled "Manual Steps" with a list of 8 steps, each with a corresponding screenshot thumbnail on the right side of the row.

Step ID	Action	Screenshot
14	select the "Amazon.com: samsung galaxy s2: Cell Phones & Accessories" window	[Screenshot of Amazon.com search results for Samsung Galaxy S2]
15	click the "Unlocked Phones (128)" link	[Screenshot of the "Unlocked Phones (128)" link in the search results]
16	select the "Amazon.com: samsung galaxy s2 Unlocked Cell Phones" window	[Screenshot of Amazon.com search results for Samsung Galaxy S2 Unlocked Cell Phones]
17	click the "Samsung Galaxy S II GT-I9100 Unlocked Phone with 8MP Camera and Touchscreen -..." link	[Screenshot of the Samsung Galaxy S II GT-I9100 Unlocked Phone product page]
18	select the "Amazon.com Shopping Cart" window	[Screenshot of the Amazon.com Shopping Cart page]
19	click the "Proceed to Checkout" link	[Screenshot of the "Proceed to Checkout" link in the shopping cart]
20	select the "Sign In - Amazon.com Checkout" window	[Screenshot of the Amazon.com Checkout sign-in page]
21	click the "Enter your e-mail address:" textbox	[Screenshot of the "Enter your e-mail address:" textbox in the sign-in page]
22	enter "rtuser" into the "Enter your e-mail address:" textbox	[Screenshot of the "Enter your e-mail address:" textbox with "rtuser" entered]



www.ibm.com/software/rational

QUESTIONS

www.ibm.com/software/rational

Acknowledgements and disclaimers

Availability: References in this presentation to IBM products, programs, or services do not imply that they will be available in all countries in which IBM operates.

The workshops, sessions and materials have been prepared by IBM or the session speakers and reflect their own views. They are provided for informational purposes only, and are neither intended to, nor shall have the effect of being, legal or other guidance or advice to any participant. While efforts were made to verify the completeness and accuracy of the information contained in this presentation, it is provided AS-IS without warranty of any kind, express or implied. IBM shall not be responsible for any damages arising out of the use of, or otherwise related to, this presentation or any other materials. Nothing contained in this presentation is intended to, nor shall have the effect of, creating any warranties or representations from IBM or its suppliers or licensors, or altering the terms and conditions of the applicable license agreement governing the use of IBM software.

All customer examples described are presented as illustrations of how those customers have used IBM products and the results they may have achieved. Actual environmental costs and performance characteristics may vary by customer. Nothing contained in these materials is intended to, nor shall have the effect of, stating or implying that any activities undertaken by you will result in any specific sales, revenue growth or other results.

© **Copyright IBM Corporation 2012. All rights reserved.**

– **U.S. Government Users Restricted Rights - Use, duplication or disclosure restricted by GSA ADP Schedule Contract with IBM Corp.**

IBM, the IBM logo, ibm.com, Rational, the Rational logo, Telelogic, the Telelogic logo, Green Hat, the Green Hat logo, and other IBM products and services are trademarks or registered trademarks of International Business Machines Corporation in the United States, other countries, or both. If these and other IBM trademarked terms are marked on their first occurrence in this information with a trademark symbol (® or ™), these symbols indicate U.S. registered or common law trademarks owned by IBM at the time this information was published. Such trademarks may also be registered or common law trademarks in other countries. A current list of IBM trademarks is available on the Web at “Copyright and trademark information” at www.ibm.com/legal/copytrade.shtml

If you have mentioned trademarks that are not from IBM, please update and add the following lines:

[Insert any special third-party trademark names/attribution here]

Other company, product, or service names may be trademarks or service marks of others.



www.ibm.com/software/rational

© Copyright IBM Corporation 2012. All rights reserved. The information contained in these materials is provided for informational purposes only, and is provided AS IS without warranty of any kind, express or implied. IBM shall not be responsible for any damages arising out of the use of, or otherwise related to, these materials. Nothing contained in these materials is intended to, nor shall have the effect of, creating any warranties or representations from IBM or its suppliers or licensors, or altering the terms and conditions of the applicable license agreement governing the use of IBM software. References in these materials to IBM products, programs, or services do not imply that they will be available in all countries in which IBM operates. Product release dates and/or capabilities referenced in these materials may change at any time at IBM's sole discretion based on market opportunities or other factors, and are not intended to be a commitment to future product or feature availability in any way. IBM, the IBM logo, Rational, the Rational logo, Telelogic, the Telelogic logo, and other IBM products and services are trademarks of the International Business Machines Corporation, in the United States, other countries or both. Other company, product, or service names may be trademarks or service marks of others.