

Innovate2010

The Rational Software Conference

Let's **build** a smarter planet.

Kim Querner-Grossman

kquerner@us.ibm.com

Leveraging Cloud Computing to Transform Software Delivery

The premier software and product delivery event.

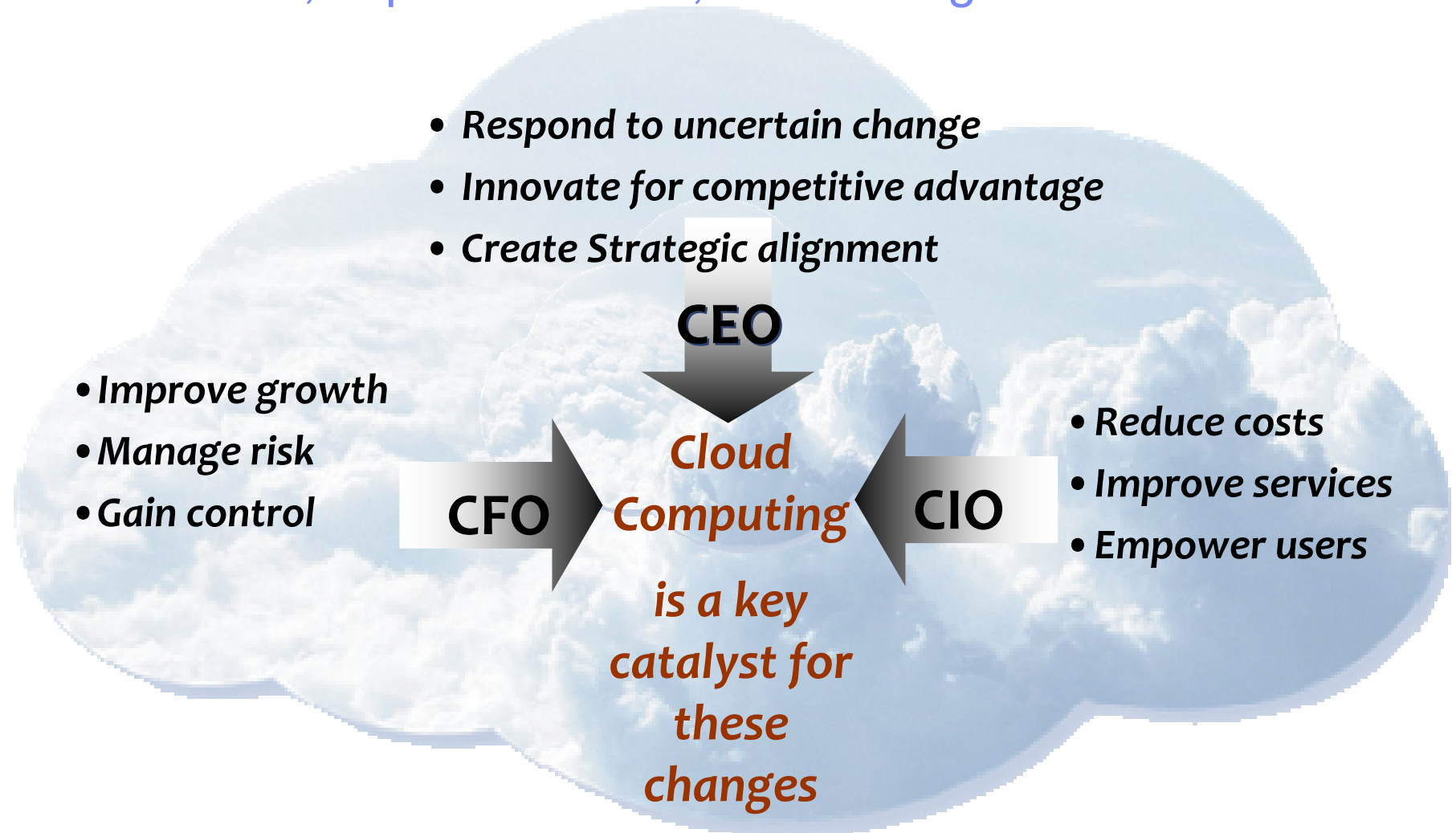


Disclaimer

© Copyright IBM Corporation 2010. All rights reserved. These materials are intended solely to outline our general product direction and should not be relied on in making a purchasing decision. Information pertaining to new product is for informational purposes only, is not a commitment, promise, or legal obligation to deliver any material, code or functionality, and may not be incorporated into any contract. The development, release, and timing of any features or functionality described for our products remains at our sole discretion. Nothing contained in these materials is intended to, nor shall have the effect of, creating any warranties or representations from IBM or its suppliers or licensors, or altering the terms and conditions of the applicable license agreement governing the use of IBM products. IBM, the IBM logo, Rational, the Rational logo, Telelogic, the Telelogic logo, and other IBM products and services are trademarks of the International Business Machines Corporation, in the United States, other countries or both. Other company, product, or service names may be trademarks or service marks of others.



CXOs are seeking alternatives such as Cloud Computing to reduce costs, improve service, and manage risks



Why Cloud is relevant to software delivery?

85% of computing capacity sits idle
30 to 50% of servers dedicated to test, test servers run < **10%** utilization
30% of all defects caused by wrongly configuration of dev/test environ.

*Silos of people,
process, and projects*

Complex Infrastructure

- × Lengthy on-boarding
- × Acquiring, installing, configuring and managing environments

High Costs

- × Low utilization rates
- × Cost inefficiencies
- × Poor LoB oversight

Chaos

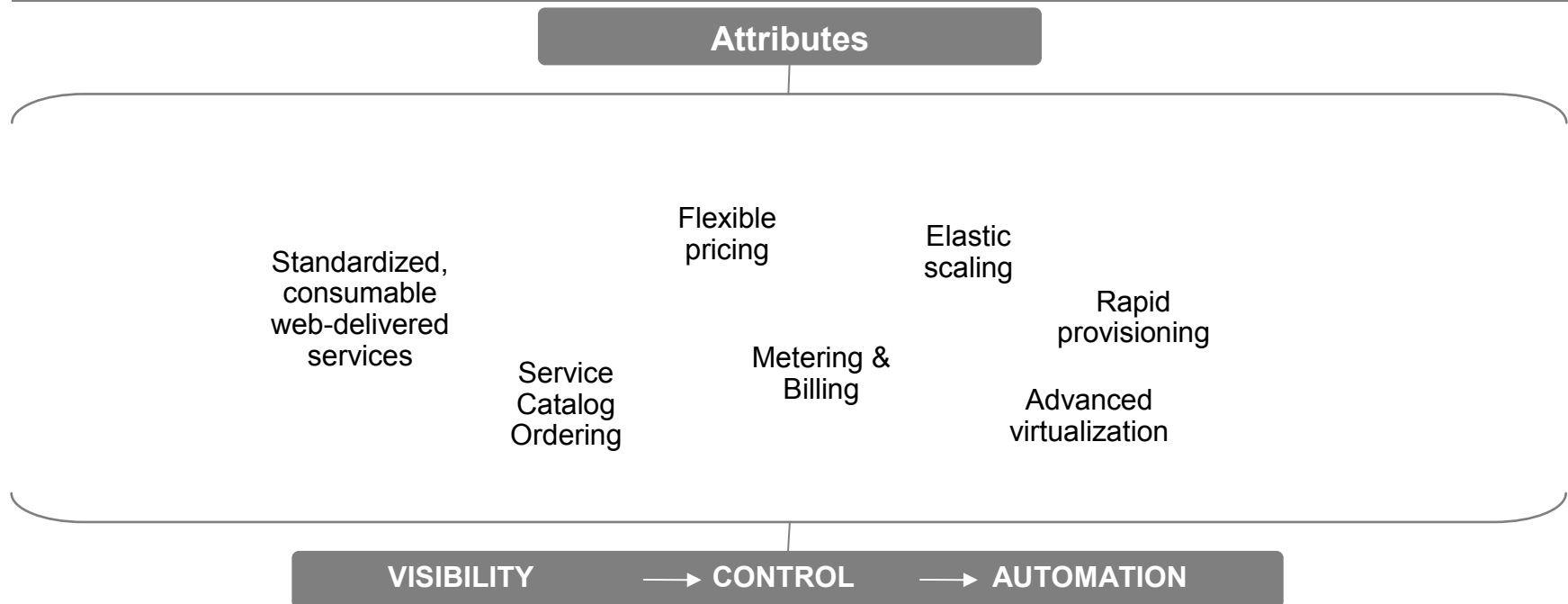
- × Weak project governance
- × Lack of domain expertise
- × Lack of standardized tools and processes

* "Industry Developments and Models – Global Testing Services: Coming of Age," IDC, 2008 and IBM Internal Reports



Cloud Computing - What Is It?

“**Cloud**” is an emerging consumption and delivery model for many IT-based services, in which the user sees only the service, and has no need to know anything about the technology or implementation



....business and IT valued perspectives

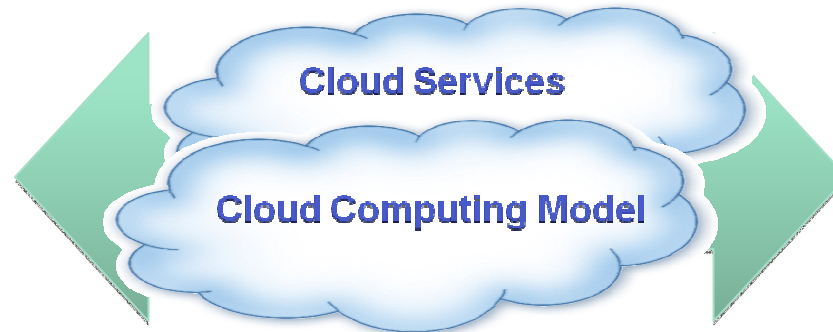


New consumption and delivery models drive new sourcing options and business flexibility

Flexible Delivery Model

Private ...

- On your own internal network
- Highly available
- Most secure and auditable
- Can integrate with legacy solutions



Hosted by a provider...

- Hosted and managed by service provider
- Delivers standardized services
- Flexible, pay-per-use basis
- Lowest cost of entry

Considerations ...

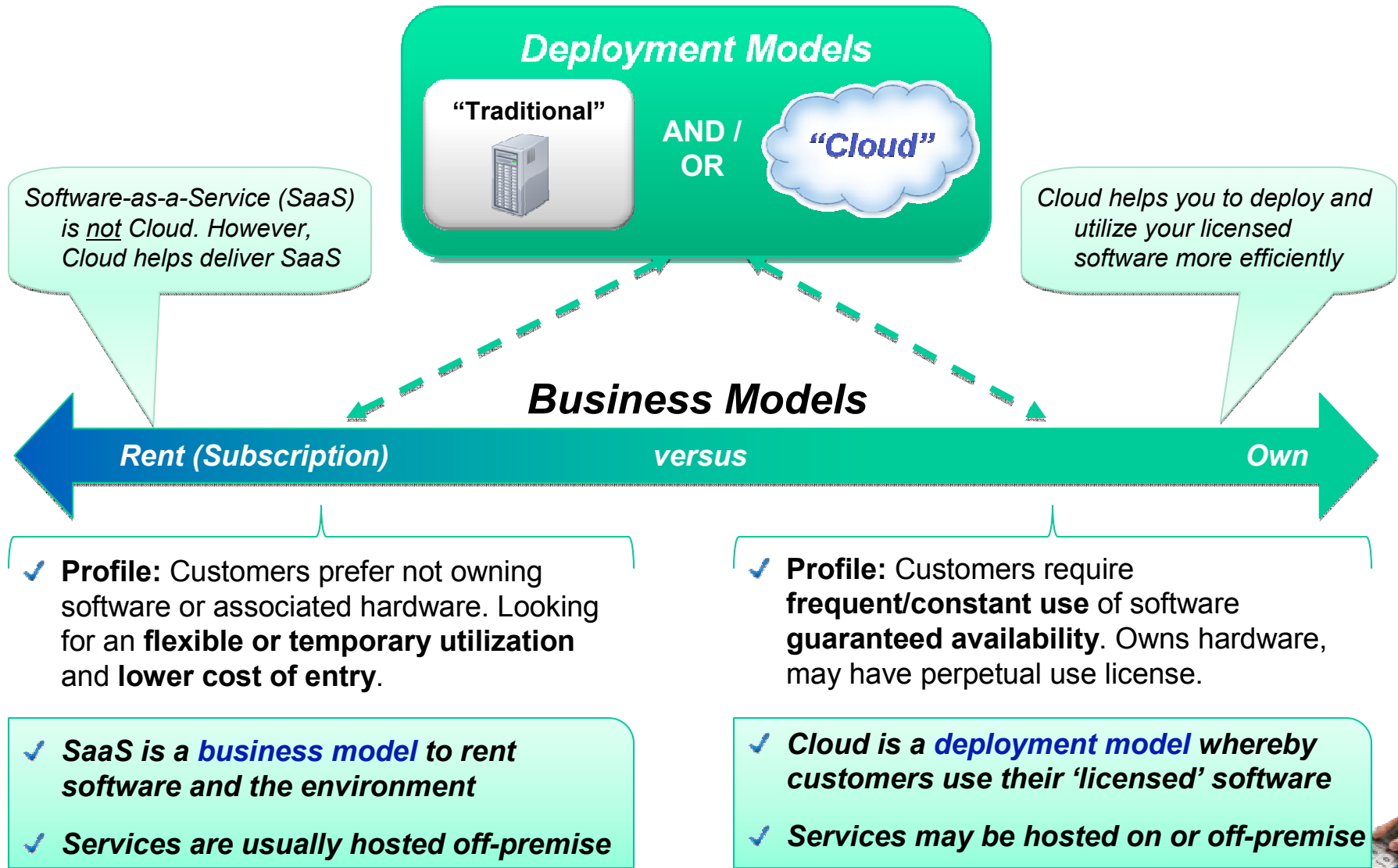
- Flexibility
- Standardization
- Security, privacy, availability

If security, availability and integration are critical, then look to private cloud

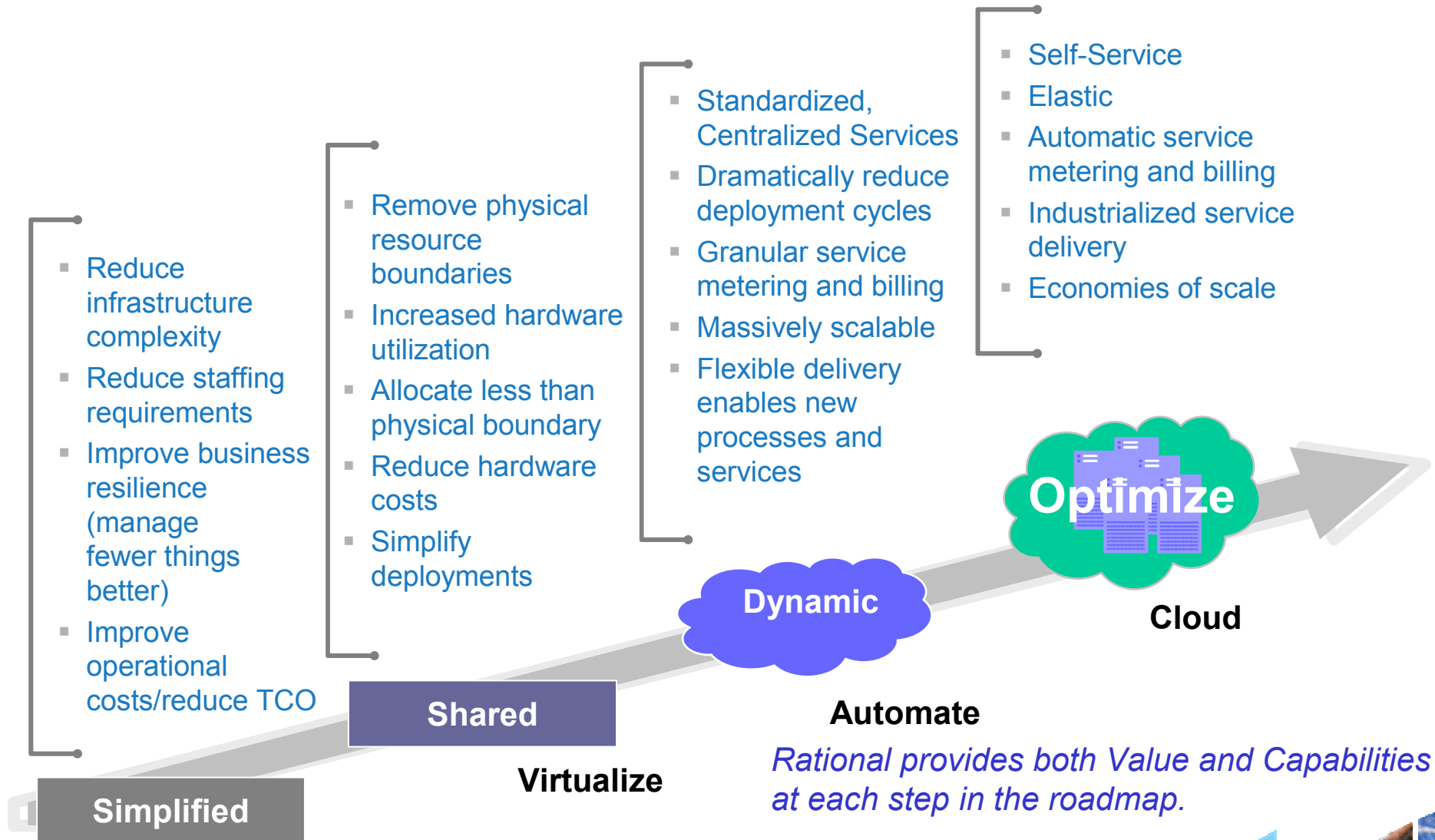
If reduced overhead, flexibility and low entry cost are important, then look to hosted cloud



Comparing Software as a Service (SaaS) and Cloud



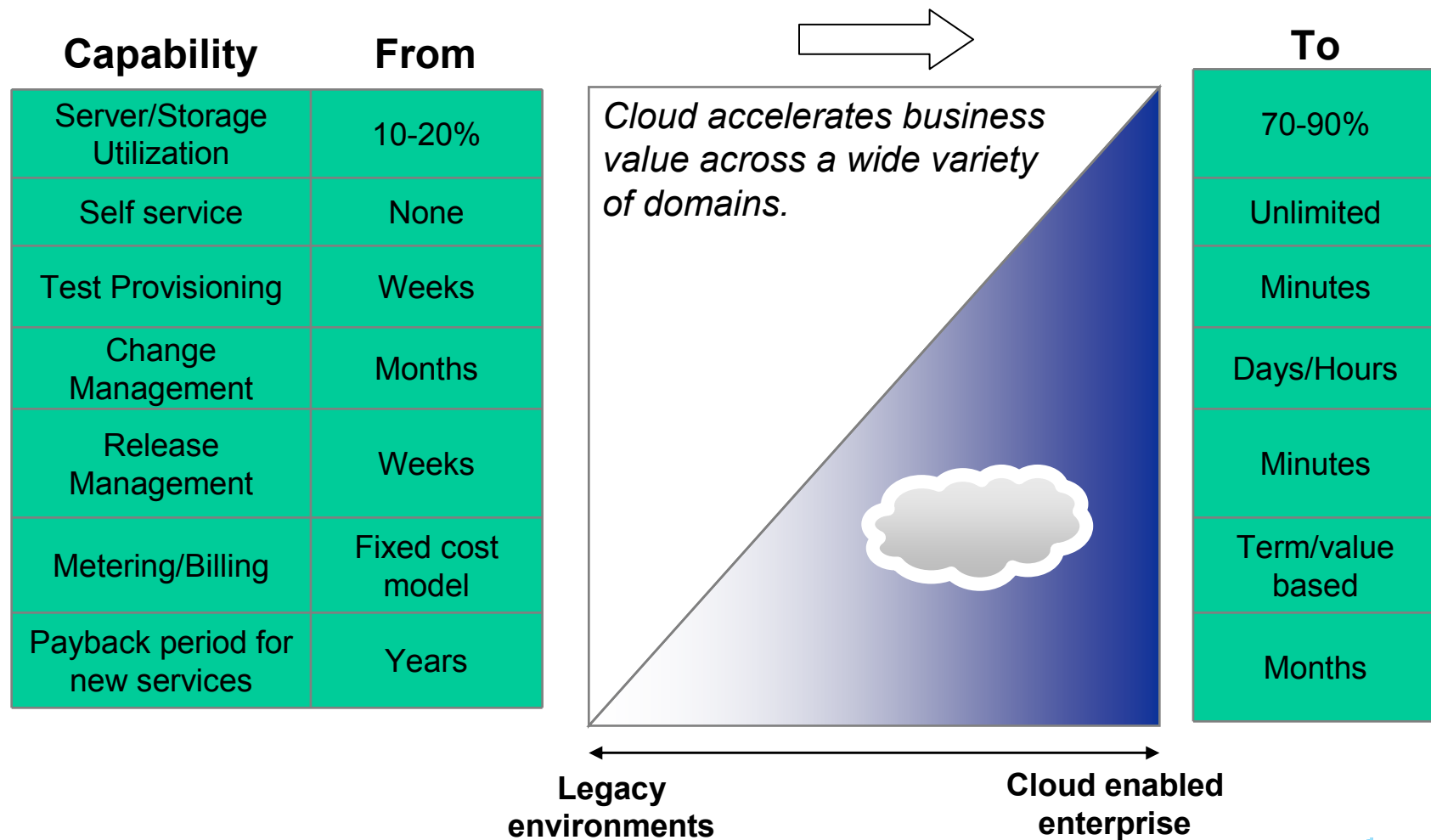
How cloud is more than virtualization (which I have today)



Rational provides both Value and Capabilities at each step in the roadmap.



Shifting your development and test capabilities to the cloud environment can drive key benefits.



Why cloud computing is important for Development and Test and production workloads

Traditional



High deployment costs to deliver software



- Reduced installation and administration costs
- Lower TCO by improved utilization of software assets

Control and governance chaos in software processes



- Better governance through standardized delivery of services
- Preconfigured software embodying best practices

Onramp and on-boarding of teams reduces time to software delivery



- Tools can be provisioned in minutes. No download, installation or setup.
- Self-administered portal to access to software resources for a globally distributed team



IBM has announced Cloud solution for different workloads, with multiple delivery choices

	Analytics	Collaboration	Development and Test	Desktop and Devices	Infrastructure (compute / storage)	Business Services
Smart Business on the IBM Cloud Standardized services on the IBM Cloud		Lotus Live	Smart Business Development & Test on the IBM Cloud	Smart Business Desktop on the IBM Cloud	Information Protection Services; Computing on Demand	
Smart Business Cloud Private cloud services, behind your firewall, built and/or managed by IBM	Smart Analytics System Powered by Infosphere		Smart Business Development and Test Cloud	Smart Business Desktop Cloud	Scale out File Services	
Smart Business Systems Pre-integrated, workload optimized systems	Smart Analytics Accelerator Powered by Infosphere		IBM CloudBurst w/Quickstart Svcs		IBM CloudBurst w/Quickstart Svcs	Smart Business for SMB (backed by the IBM cloud)

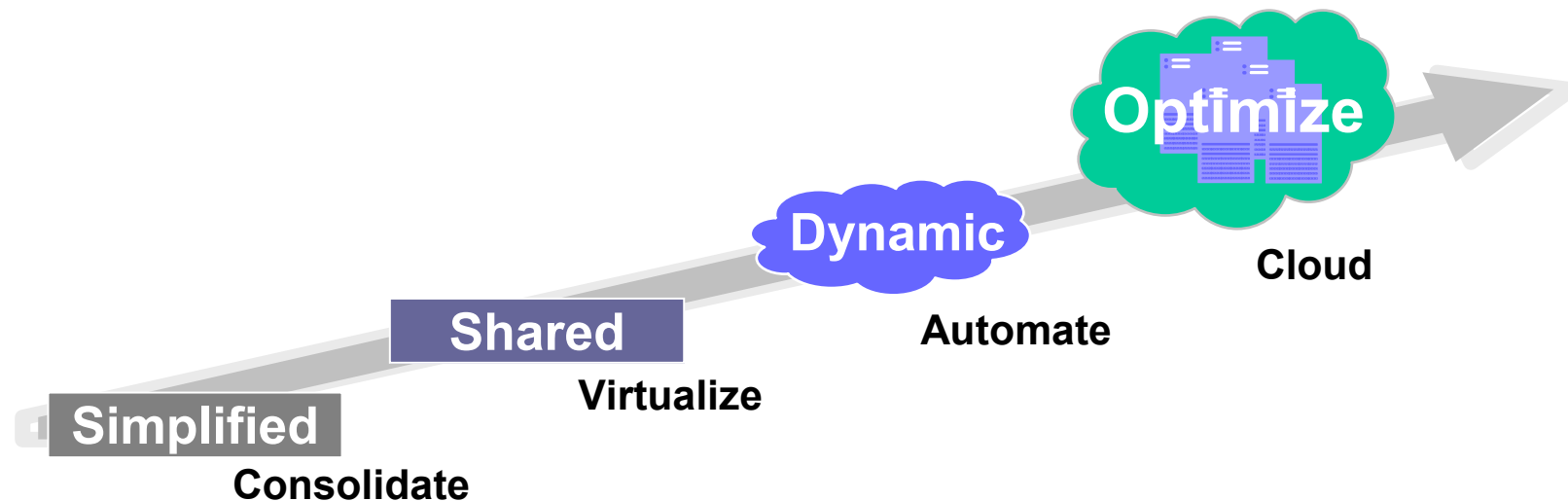
Currently Available
Future offering



The Transformation Proposition

IBM Rational Software Delivery Services

IBM Rational Software Delivery Services help organizations leverage software delivery principles through tailored combinations of **hardware, software, best practices and consulting** to create the best business value in each unique industry. Across the board, IBM Rational offers exceptional value for customers planning the transformation of their business.



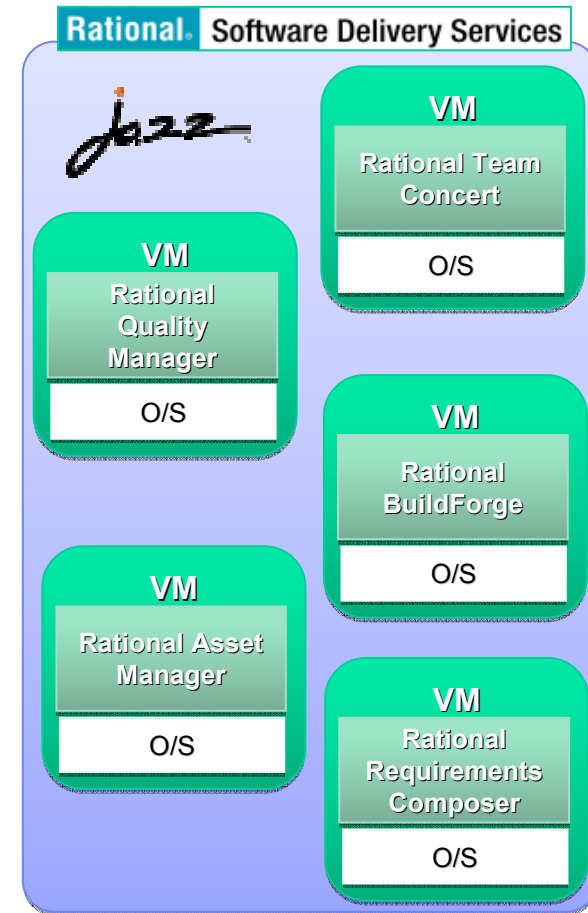
Successful transformations require a Secure, Collaborative and Integrated Software Delivery approach



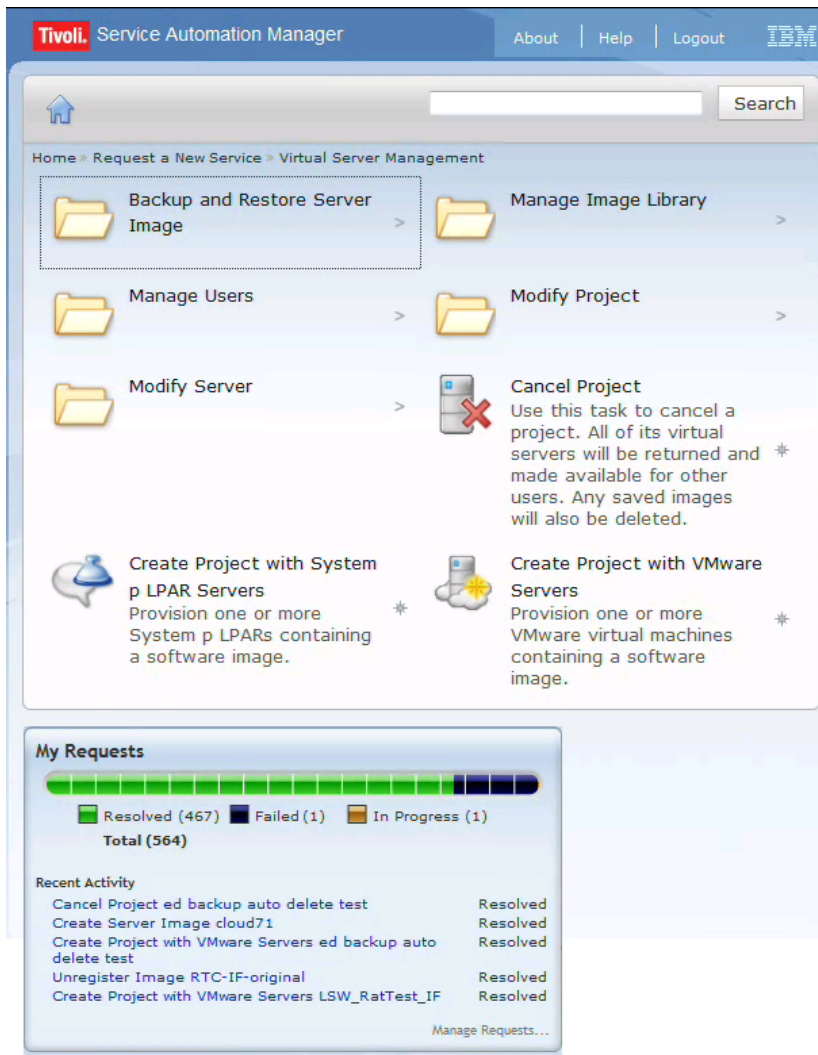
IBM Software Delivery Services for Cloud Computing

The evolution of the Jazz platform for the cloud

- A collection of Rational products and capabilities available in the cloud addressing the Software Delivery Lifecycle
 - **Agile Development Services**
Rational Team Concert
 - **Quality Management Services**
Rational Quality Manager
 - **Requirements management Services**
Rational Requirements Composer
 - **Build Automation Services**
Rational Build Forge
 - **Asset management Services**
Rational Asset Manager
- Self provisioning, access to hardware and infrastructure services on the cloud
- **Benefits:**
 - Low total cost of ownership
 - Capital preservation
 - Improved productivity
 - Governance and Control



IBM Smart Business Development and Test Cloud – at a glance



- **What is the service?**
 - ▶ Design and implementation of a private cloud for a test and development environment
- **What is included?**
 - ▶ Self-service, catalog portal to request resources
 - ▶ Cloud management platform that combines service request management, automated provisioning and change and configuration management
- **What are the supported platforms and key features?**
 - ▶ Out of the box support for VMWare, KVM and PowerVM virtualized environments
 - ▶ Enhanced Cloud end-user GUI based on Web 2.0 technology
 - ▶ Image Management including save / restore
 - ▶ Usage Metering and Accounting with ITUAM
- **What development and test tools are included in the service catalog?**
 - ▶ Preconfigured software images for: Rational Team Concert, Rational Asset Manager, Rational Quality Manager, Build Forge

IBM Smart Business Development and Test on the IBM Cloud



www.ibm.com/cloud/enterprise

What is the service?

- A dynamic virtual development and test infrastructure service, designed for the enterprise, on the IBM Cloud

What are you buying?

- Choice of virtual server configurations
- Option to add persistent storage charged per usage
- Network bandwidth charged per usage
- Choice of pre-configured software images
 - ▶ Rational Application Lifecycle Management software
 - ▶ Lotus, WebSphere, DB2 and Informix stacks

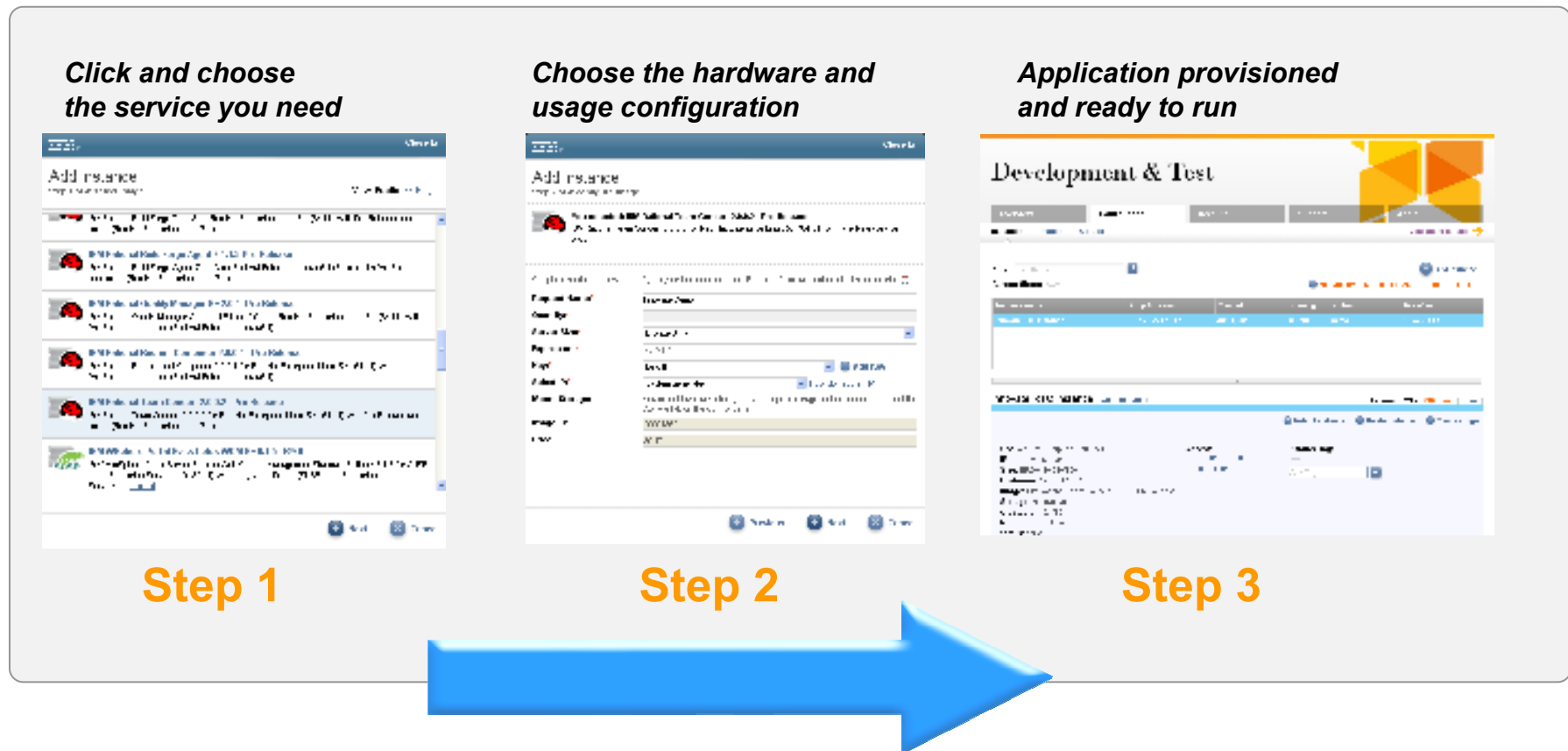
What payment options are available for Rational images?

- Bring your own license model
- Shared Reserved option

What support is available?

- Web-based forum for users to submit requests
- Premium support 24X7 *

With rapid, automated setup through a self-service portal that is designed for ease of use, you can deploy a service within minutes.



IBM leverages Smart Business Test Cloud services internally

Business challenge

- IBM needed a self-service development and test environment to allow developers to deploy development and test server images more efficiently and cost-effectively
- In a traditional environment, the average test time provisioning was five days

Solution

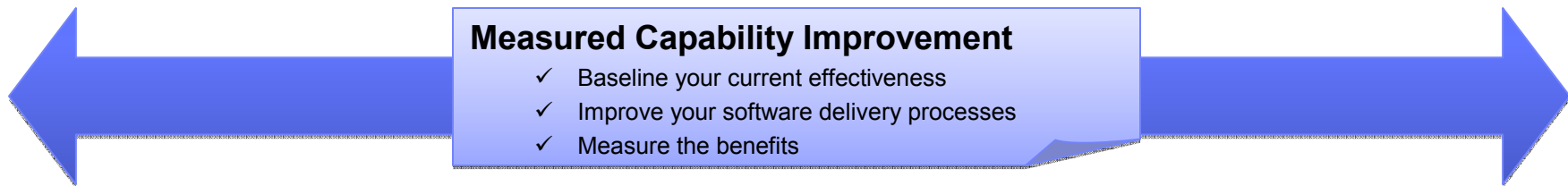
- IBM deployed the IBM Smart Business Test Cloud solution, allowing developers to deploy the environment in a fraction of the time. The solution includes:
 - Provisioning of a configured security and architecture-compliant environment
 - Automated approval within preset monthly spend limits
 - Self-service purchase of optional support services

Benefits

- Provisioning of development and test servers in approximately one hour (versus five days)
- Significant reduction of labor associated with server provisioning, image setup, approvals and maintenance
- Higher machine utilization, fewer physical servers, less capital
- Automated usage metering and billing with better service to end-users



Various services are available today with the IBM Smart Business Development and Test Cloud



Migration Services

- ✓ Move your existing Rational environment to the cloud
- ✓ Adapt your usage patterns and processes as needed

Integration Services

- ✓ Integrate SDS offerings with your other tools
- ✓ Automate processes to reduce costs and time

Custom Image Development

- ✓ Tailor SDS images for your environment
- ✓ Create new images

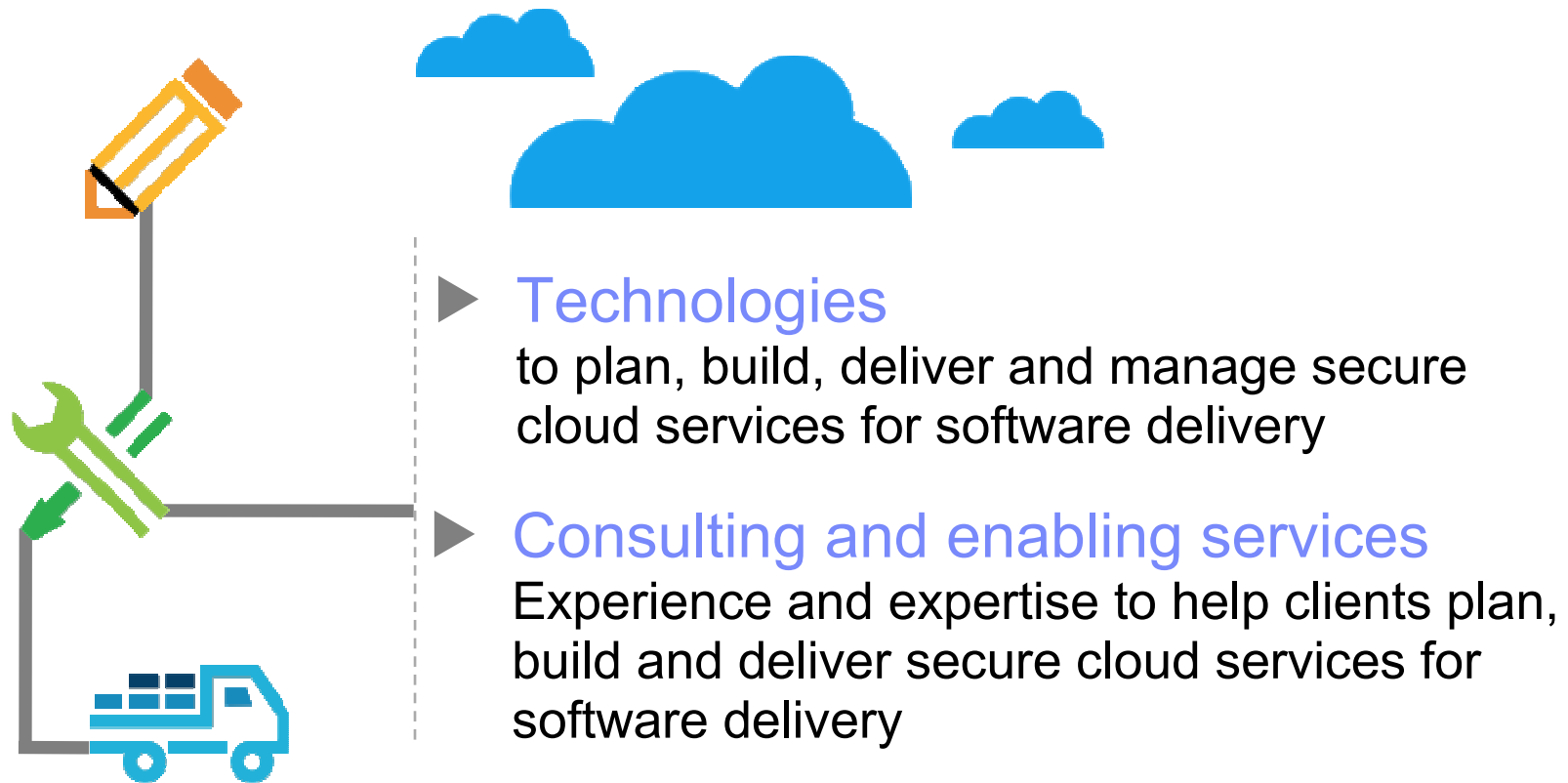
Deployment

- ✓ Deploy SDS images in the Cloud
- ✓ Establish usage patterns around your processes



IBM Rational provides a comprehensive set of capabilities to accelerate your cloud journey

One size does not fit all

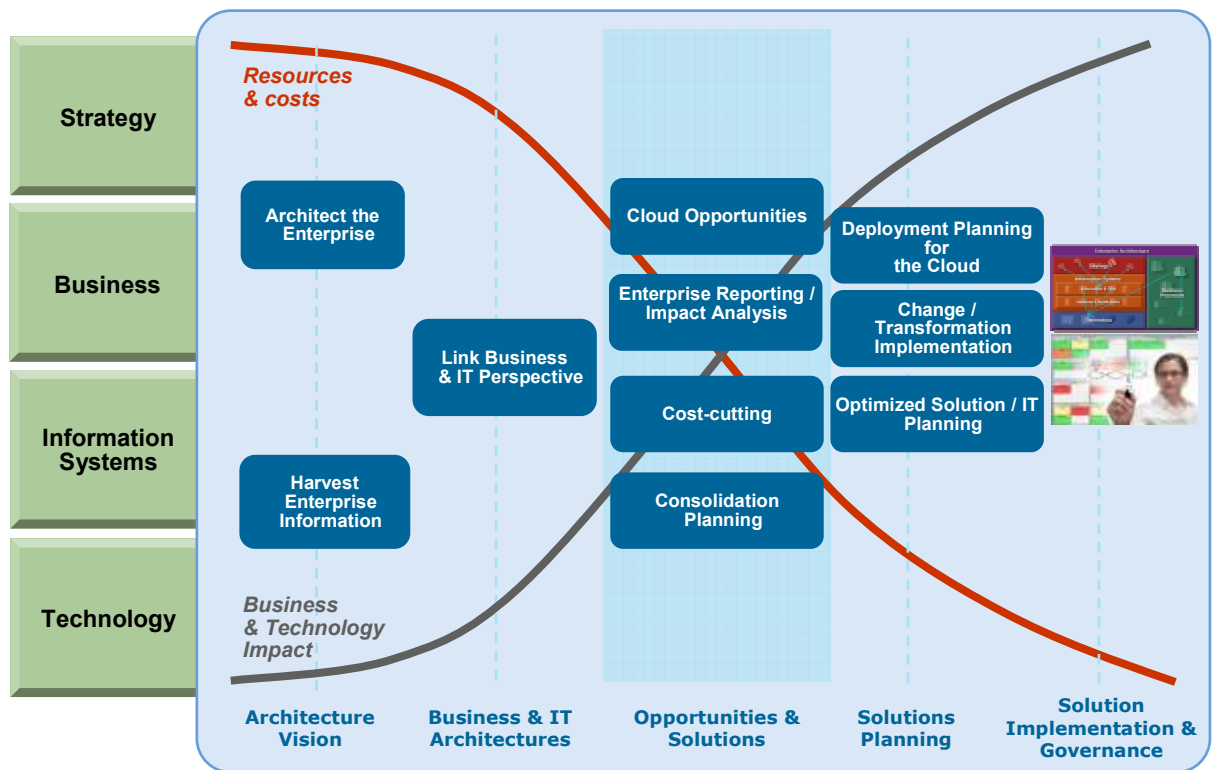


Actionable enterprise architecture guides successful transformation to cloud

Cloud planning and strategy, reduce risk in deployment

Analyze, decide and plan how and when to leverage cloud – risk vs. reward

- Connect business needs to cloud strategy and deployment
- Use unified cloud analysis & reporting platform
- Understand dependencies (cloud/non-cloud services)
- Create roadmaps for cloud transition
- Connect cloud targets and templates to solution delivery
- Identify services for reuse



Security is among a top concern with cloud computing...

The IBM Security Framework provides a structure to address this concern



People and identity

Mitigate the risks associated with user access to corporate resources



Data and information

Understand, deploy and properly test controls for access to and usage of sensitive data



Application and process

Help keep applications secure, protected from malicious or fraudulent use, and hardened against failure



Network, server and end point

Optimize service availability by mitigating risks to network components



Physical infrastructure

Provide actionable intelligence on the desired state of physical infrastructure security and make improvements

- ▶ IBM Rational AppScan
- ▶ IBM Rational Policy Tester
- ▶ IBM Rational Functional Tester



In addition to today's cloud service offerings, Rational sees potential for future transformation leveraging cloud computing

Software as a Service

- Business Partner Program support
- For desktop- and server-based tools
- Dramatically reduce TCO
- Zero startup time and cost



Virtual Build and Test Farms

- Zero setup time for build systems
- Zero setup time for test environments
- Leveraging elasticity in build and test
- Improved hardware utilization
- Virtual Test Lab management
- Overflow workloads on public cloud



Modeling and Automated Deployment

- Design applications using standard middleware configurations
- Automate application deployment onto the cloud
- Create cloud assets (self-describing images and components)
- Compose assets into deployable solutions



	Currently Available		Future offering
---	---------------------	---	-----------------



Testing moves towards the clouds

Traditional Hardware

- Large Capital Expense for each team
- Underutilized hardware
- Time consuming setup/teardown
- Misconfigurations lead to rework



Virtualized Labs

- Reduced CapEx, shared across a dept
- VM Images simplify setup
- VM Image sprawl – no image management
- Only provisions single images
- Multi-node configurations still manual
- Misconfigurations lead to rework

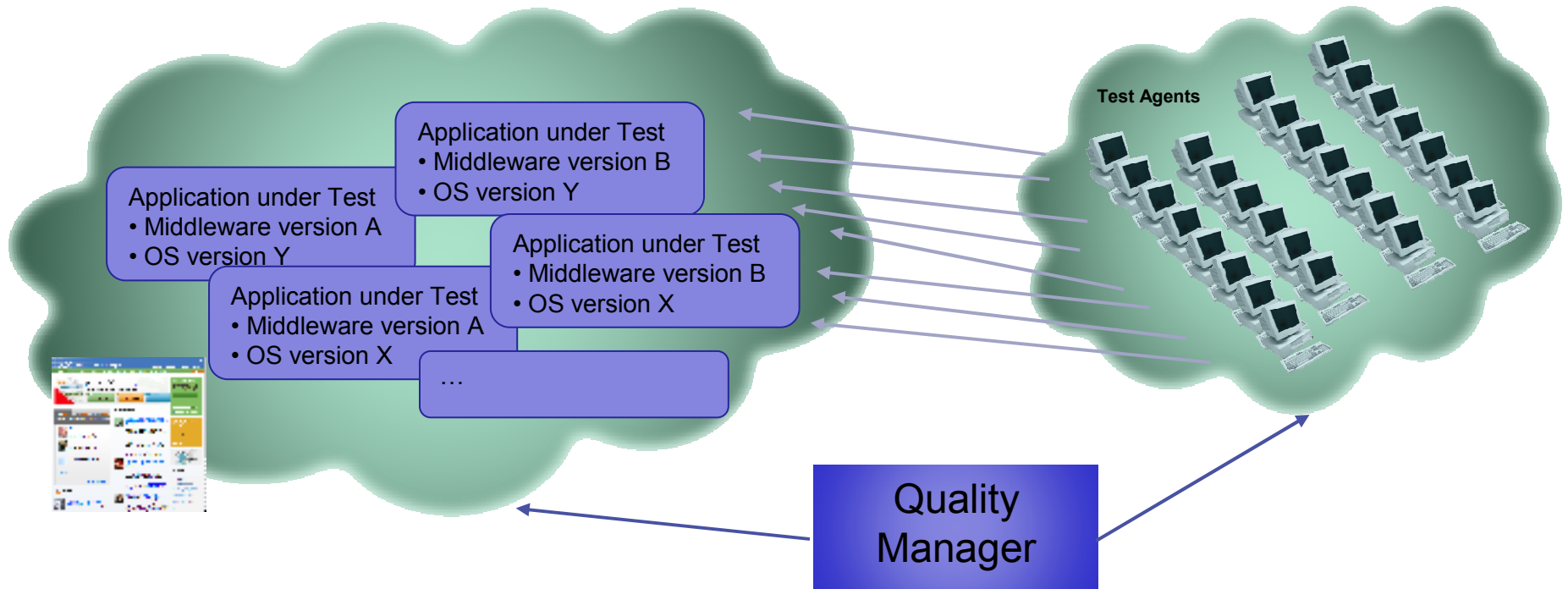


Cloud-based Automated Labs

- Capital shared across divisions
- Integrated QM and Lab Management
- Modeled test environments map to cloud image “patterns”
- Infrastructure provisioned & configured
- Applications automatically deployed & configured
- Deployment info shared across dev, test, and ops
- Test tools also in the cloud



Virtual Test Labs



- Create test plans considering time and resources across many dimensions
- Dynamically provision systems under test
 - Improve utilization of lab resources
 - Improve efficiency of test team
- Standard OS/Middleware configurations in preconfigured images
- Easily setup regression tests against varying OS and middleware combinations

- Large scale performance testing
 - Dynamically provision RPT load generators
- Improve efficiency/coverage of regression tests
 - Dynamically provision test agents (RFT)
 - Test against multiple OS/Browser config
- Preconfigured Cloud Images with test agents
- Support multiple cloud platforms



Automated Deployment to the Clouds

Traditional Deployments

- Free-form data
- Ad-hoc topology descriptions
- Many Manual Tasks
- Time consuming and error-prone setup

Model-Driven

- Deployment middleware captured as model
- Can be shared between development and operations
- Easily modified

Model-Driven Cloud Deployment

- Automatically provisions OS and Middleware
- Pushes code to deployment environment
- Automatically configures application



Summary

- Cloud has the potential to radically change how we build software:
 - ▶ Lower costs
 - ▶ Increased productivity
 - ▶ Faster product delivery

- IBM and Rational are making significant investments to bring the potential of Cloud to life

- First products to be available for the private cloud and on the IBM Cloud include:
 - ▶ Rational Team Concert
 - ▶ Rational Quality Manager
 - ▶ Rational Build Forge
 - ▶ Rational Requirement Composer
 - ▶ Rational Asset Manager

- More to come in 2010 and beyond



www.ibm.com/software/rational

© Copyright IBM Corporation 2010. All rights reserved. The information contained in these materials is provided for informational purposes only, and is provided AS IS without warranty of any kind, express or implied. IBM shall not be responsible for any damages arising out of the use of, or otherwise related to, these materials. Nothing contained in these materials is intended to, nor shall have the effect of, creating any warranties or representations from IBM or its suppliers or licensors, or altering the terms and conditions of the applicable license agreement governing the use of IBM software. References in these materials to IBM products, programs, or services do not imply that they will be available in all countries in which IBM operates. Product release dates and/or capabilities referenced in these materials may change at any time at IBM's sole discretion based on market opportunities or other factors, and are not intended to be a commitment to future product or feature availability in any way. IBM, the IBM logo, Rational, the Rational logo, Telelogic, the Telelogic logo, and other IBM products and services are trademarks of the International Business Machines Corporation, in the United States, other countries or both. Other company, product, or service names may be trademarks or service marks of others.

Let's build a smarter planet.

