

# Leveraging IBM Rational Jazz on the Cloud for Efficient Software Delivery

Steven Huntington  
Program Director, Cloud Computing  
IBM Rational  
[smhuntington@us.ibm.com](mailto:smhuntington@us.ibm.com)



IBM Software

# Innovate2011

The Premier Event for Software and Systems Innovation



August 9-11, Bangalore | August 11, Delhi



## **Please Note:**

**IBM's statements regarding its plans, directions, and intent are subject to change or withdrawal at IBM's sole discretion. Information regarding potential future products is intended to outline our general product direction and it should not be relied on in making a purchasing decision.**

**The information mentioned regarding potential future products is not a commitment, promise, or legal obligation to deliver any material, code or functionality. Information about potential future products may not be incorporated into any contract. The development, release, and timing of any future features or functionality described for our products remains at our sole discretion.**

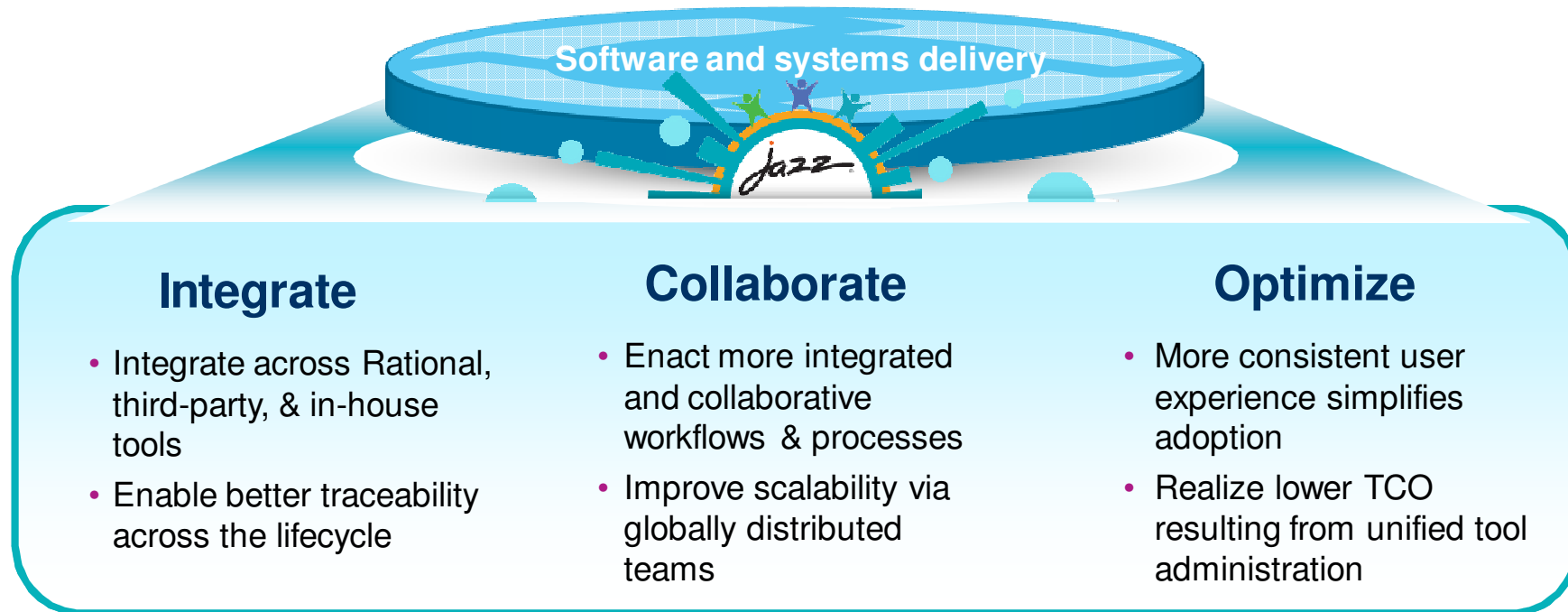
## Agenda

- Cloud – new opportunities to deliver value
- Deploying Rational Jazz solutions on the Cloud
  - ▶ Challenges in deploying ALM solutions
  - ▶ IBM Rational Jazz solutions on the cloud
  - ▶ IBM SmartCloud Enterprise
- Summary and Questions



# Business Value of Jazz

Improved productivity with an integrated ALM solution...



...but you need to deploy it and get it into the hands of the users

## Can Cloud Address the Pains of ALM Deployments?

### ***Barriers for Adoption of CLM***

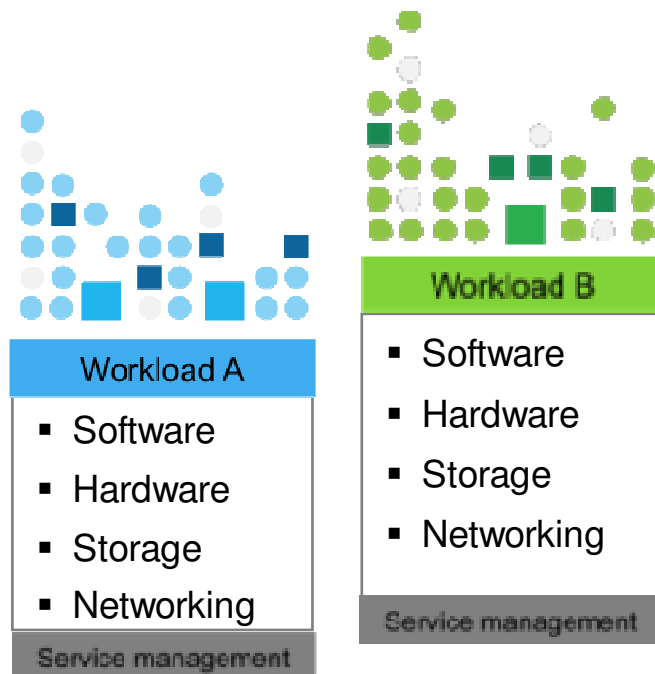
- IT unwilling to roll out new capabilities due to incremental cost and time
- Integrations require skills across multiple products
- Difficult to scale up for projects that require fast-ramp up
- Cost of maintenance and support



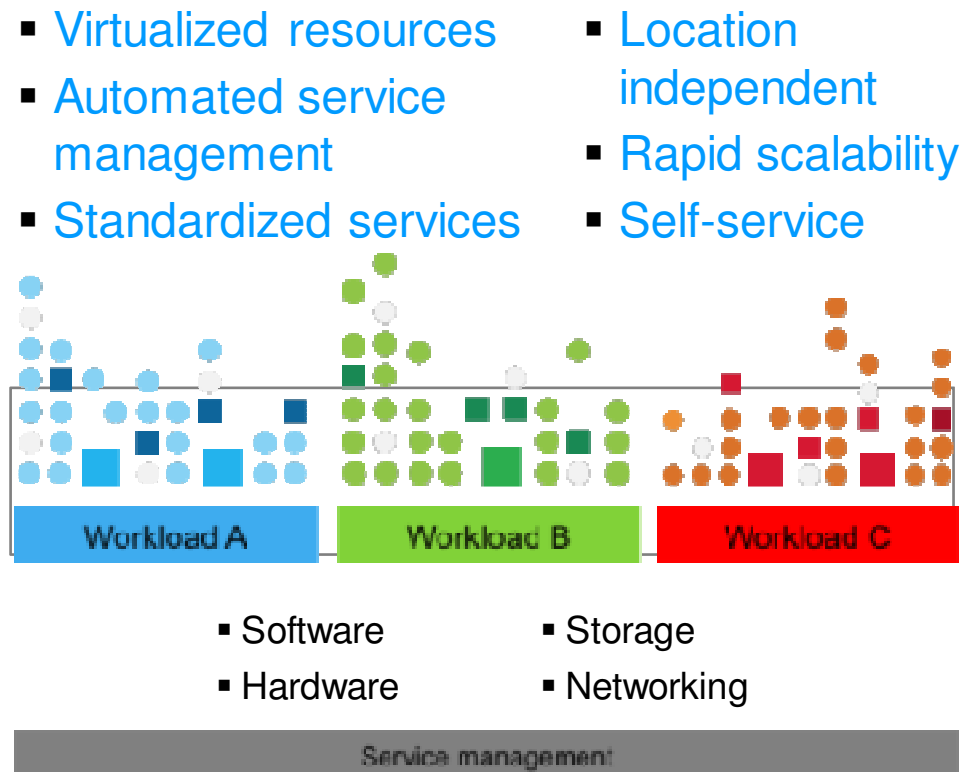
***How Cloud can solve?***

# What is different about cloud computing?

## Without cloud computing



## With cloud computing



Note: Elements of cloud computing taken from NIST, Gartner, Forrester and IDC cloud computing definitions

## Dev/Test Challenges: A Global Hospitality Client Case Study

- **Problem:** A large hospitality company needs to enable global development and test teams to be more effective and efficient at more than 100 locations worldwide.
  - ▶ Every new project rollout is one-of-a-kind. Teams who install, configure and maintain ALM integrations often do so without knowledge of previous implementations
  - ▶ Practitioners moving from project to project need to relearn processes that differ
  - ▶ Issues providing global access to project resources
  - ▶ Difficult to react quickly to changes and ramp up new projects due to customization time, procurement issues and provisioning



## IT/LOB Challenges: A Global Hospitality Client Case Study

- **IT Challenges:**

- ▶ Costly and complex to install, configure and maintain integrated ALM environments for multiple projects
- ▶ Difficult to manage patches and licenses for globally distributed teams and projects

- **Line of Business Challenges:**

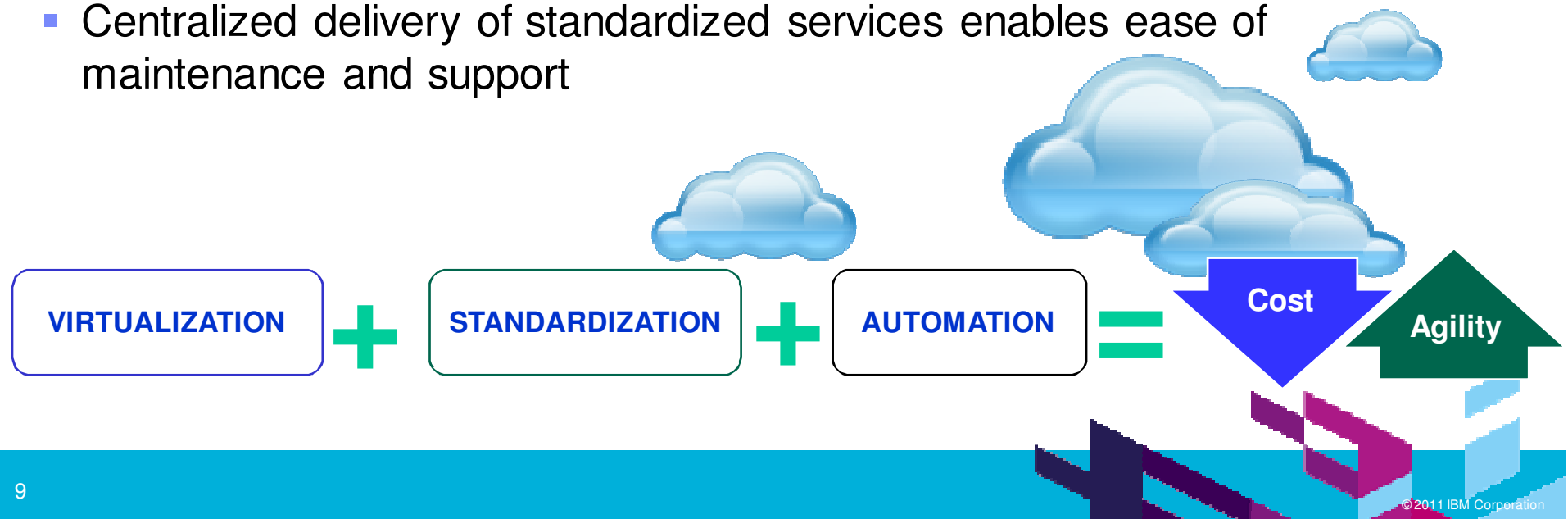
- ▶ Inability of IT to react quickly to changing business needs





## How can Cloud address these challenges?

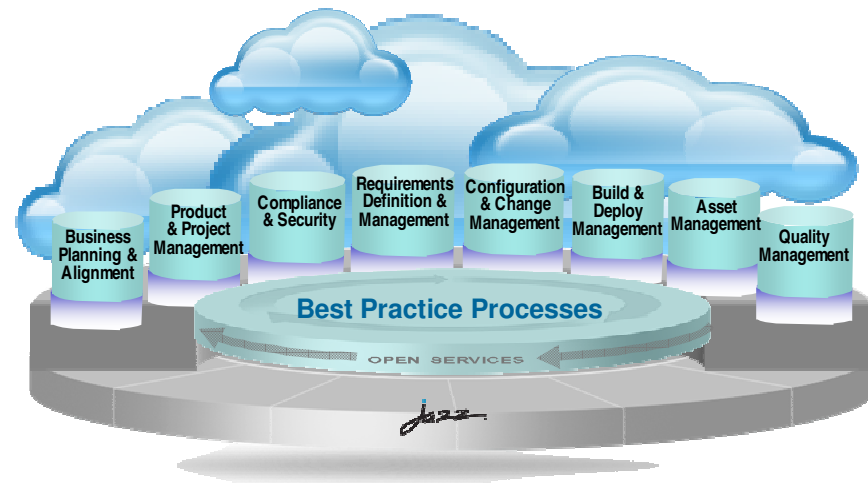
- Pre-fabricated and integrated images allows instant-on and consistent deployment
- Standardized and automated solution delivery with a self-service access
- Centralized delivery of standardized services enables ease of maintenance and support



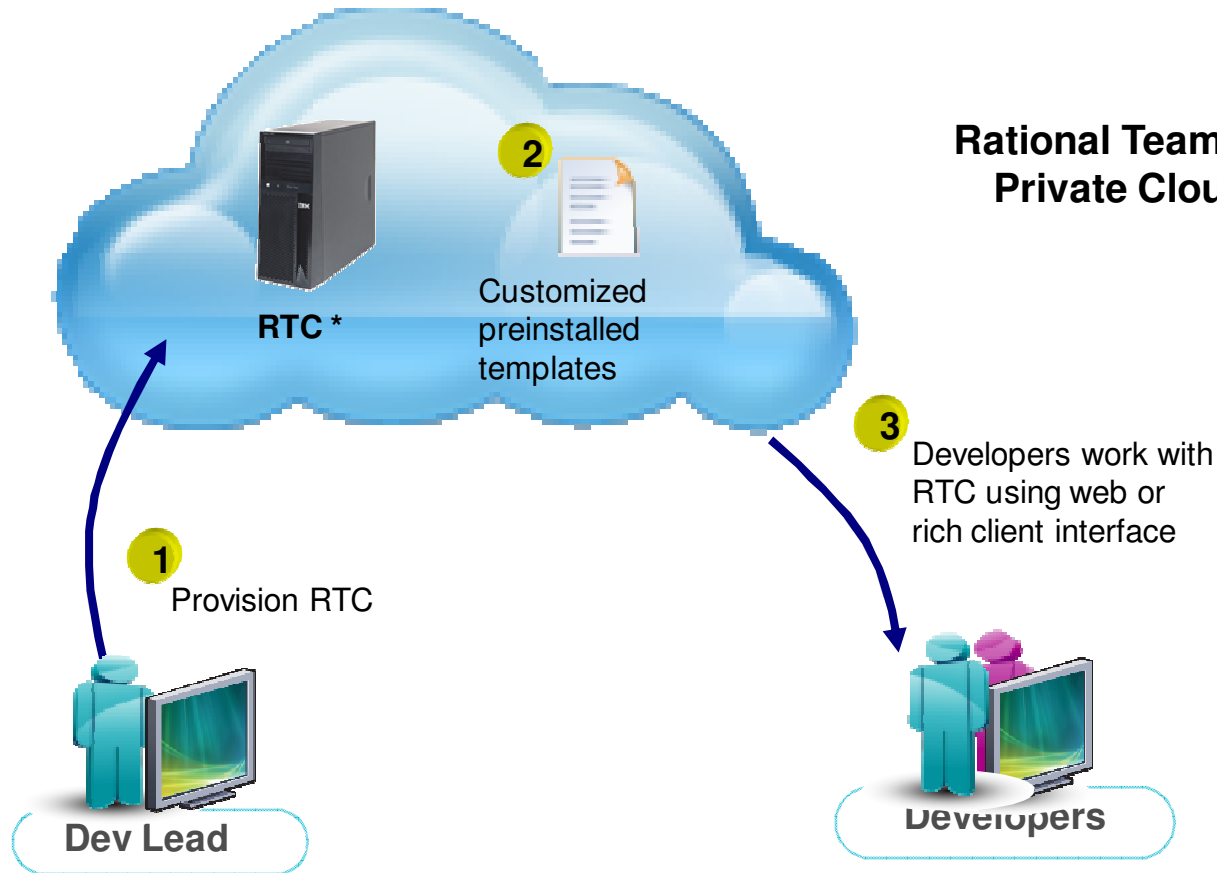
## Solution: IBM Rational cloud-based capabilities

*Available across IBM cloud infrastructures and beyond*

- **All Rational Solutions are available on cloud infrastructures** – in your own private cloud environment or hosted by IBM
- **Pre-configured images are available today**
  - Rational Collaborative Lifecycle Management Solutions (RTC, RQM, RRC)
  - Rational Asset Manager
  - Rational Build Forge
- **Images available for IBM Infrastructures**
  - IBM SmartCloud Enterprise
  - IBM Smart Business Development and Test Cloud
  - IBM Service Delivery Manager
  - IBM CloudBurst Appliance
- **Maximize existing Rational investments** with Bring-Your-Own-License to the cloud



# Example: Globally Distributed Development teams



## Rational Team Concert (RTC) on Private Cloud Infrastructure

\* RTC can be replaced with RRC, RQM or RAM in this scenario for requirements or asset management, respectively

## IBM Smart Business Desktop on the IBM Cloud

- Answers the infrastructure challenges of traditional desktops...

### Security Control of PCs

- Patch compliance
- Security risks in data and infrastructure
- Regulations

### Rising Cost of PC Management

- Deployment
- Support
- Controlling and tracking IT Assets
- Unpredictable IT costs



### IT Infrastructure Management Complexity

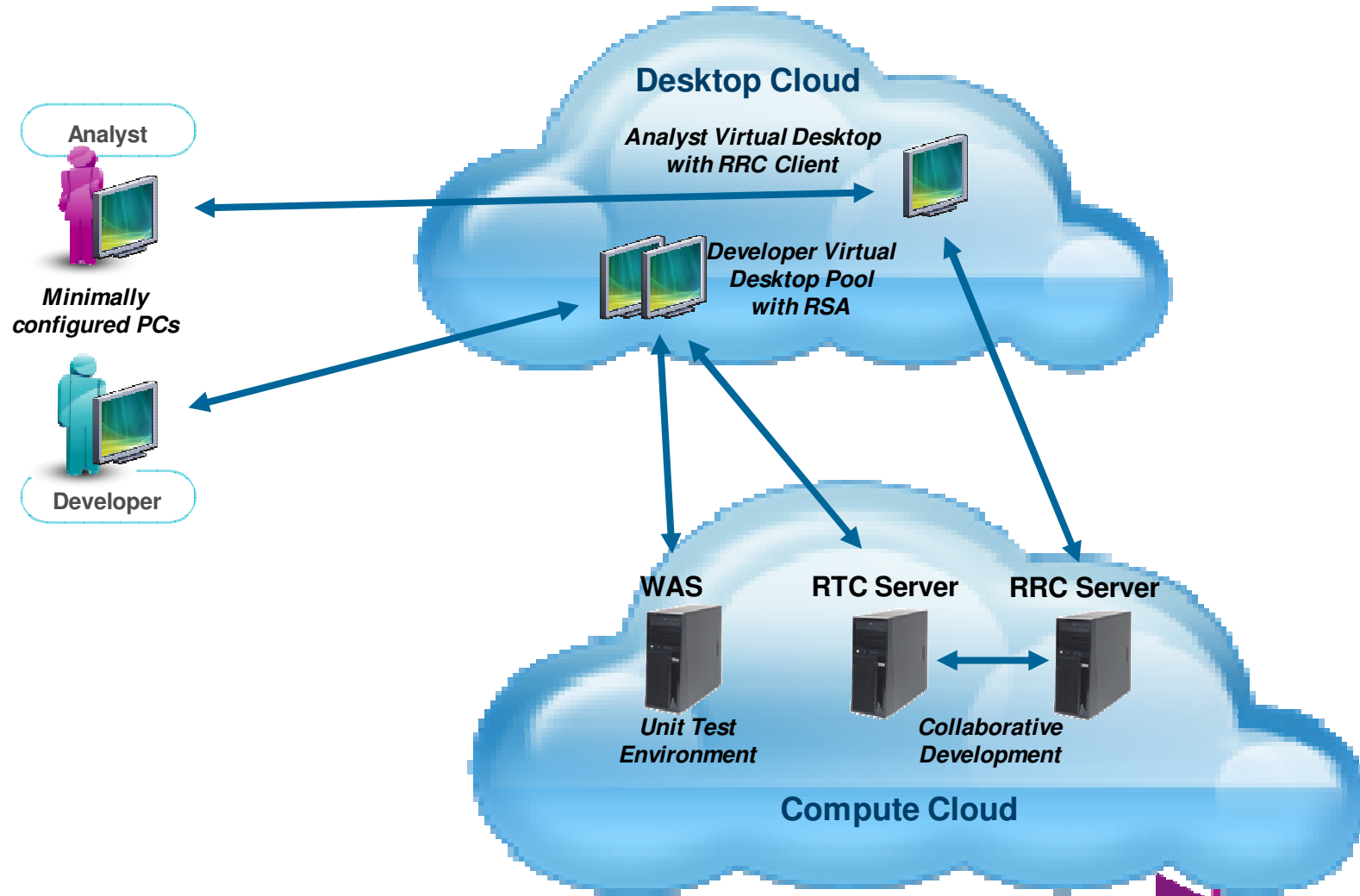
- Many makes and models
- Refresh cycles
- Standardization and availability

### Distributed Workforce

- Outsourcing and off-shoring
- Mobile and remote workers

# Putting it all together – Development on and with the Cloud

*Optimize your development team by leveraging the cloud*



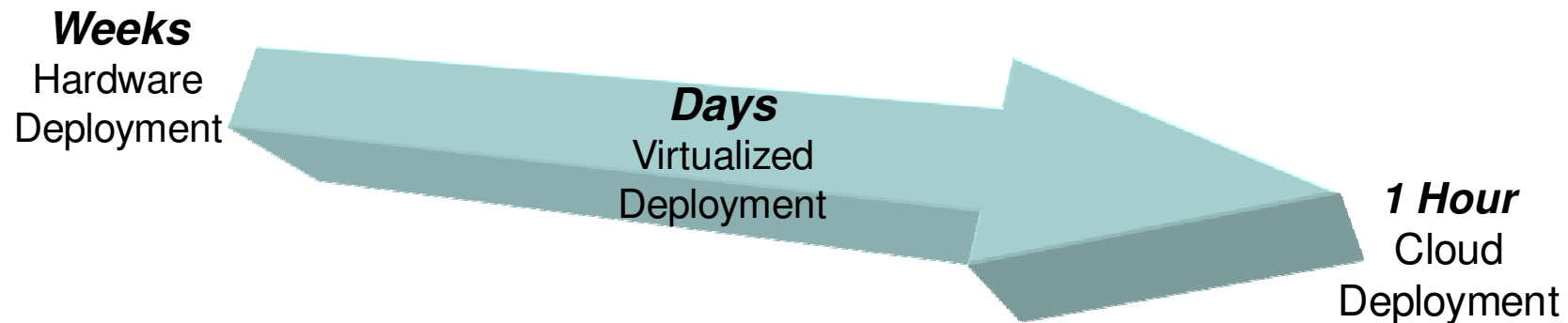
## Benefits of Rational ALM solutions on the cloud

*Rapidly share, communicate and report - globally*



- **Reduced deployment Cost**
  - ▶ Hardware infrastructure savings
  - ▶ Cost savings from automated deployment
  - ▶ Reduced maintenance cost from centralized delivery
- **Control & Governance**
  - ▶ Improved visibility, consistency, and control of existing deployments
  - ▶ Easy to administer patches / bug fixes
  - ▶ Easy to manage licenses and improved use of existing licenses
- **Time to value**
  - ▶ Self-service model for instant-on productivity
  - ▶ Easy access to fully pre-configured solution, around the world
- **Agility @ Scale**
  - ▶ Scale up and down with project needs
  - ▶ Flexibility in sourcing solution based on needs

## IBM Office of the CIO cuts development environment provisioning time by 97% with new Development-Test Cloud



- Pre-configured environments of Rational tools, IBM process practices and security standards
- Reduced turnaround time of new requests from 5 days to 1 hour
- Reduced capital costs through shared infrastructure services – and deprovisioning of idle systems
- Decreased project costs by removing setup fee and billing only for services consumed
- Same team can support up to 20 additional new projects each month

## Additional Patterns of usage for ALM images in the Cloud

- **Sandbox**
  - ▶ Lower barrier and lower effort means to experiment with ALM tool setup, configuration and administration options, to assist in planning and accelerating the client's actual production deployment
  
- **Enablement**
  - ▶ Quickly access and establish ALM environments for training administrators and users
  
- **New projects**
  - ▶ Fast time to deploy for new projects
    - No impact on previously deployed tools and associated teams
    - Lower impact on the IT department
    - No need to plan migrations for existing projects



# Internal Case Study: Rational Demonstration Cloud

*Our sellers get server environments provisioned and running in minutes*



## What is it?

- ▶ An account on the IBM SmartCloud Enterprise for use by Rational Field teams
- ▶ Includes more than 19 image assets, comprised of both standard and shared community-built images

## What is it for?

- ▶ Customer demonstrations, PoTs and PoCs
- ▶ Seller and Technical Professional enablement, value-added asset development
- ▶ Event Support (e.g. Innovate, symposiums)

## What results have we seen?

- ▶ Performed complex, multi-product ALM demonstration for hotel chain in days instead of weeks.
- ▶ Provisioned RAM instance for demo for UK financial institution, then gave customer immediate access to demo image for a 30 day trial.
- ▶ Demonstrated integrated RTC, RQM, RRC and Insight solution to global technology firm. Avoided potential delays around installing on client's infrastructure.

# IBMSmartCloud Enterprise

The screenshot shows the IBM SmartCloud Enterprise website interface. At the top, there's a navigation bar with 'Select a country', contact information for U.S. & Canada (1-877-426-3287), and links for 'Chat now', 'Demo', and 'Email'. Below this is a 'Browse Image Catalog' section with two columns: 'Operating systems' (listing Red Hat Enterprise Linux, GUSE Linux Enterprise Server, and Microsoft Windows Server) and 'Software' (listing Application dev environments, Application lifecycle, Application servers, Business intelligence, Databases, Monitoring, Portals and collaboration, and Cloud networking). A main content area features the headline 'Smart. Secure. Ready for business.' and a sub-headline: 'IBM Smart Cloud Enterprise is an agile cloud infrastructure as a service (IaaS) designed to provide rapid access to security-rich, enterprise-class virtual server environments, well suited for development and test activities and other dynamic workloads. Ideal for both IT and application development teams, the IBM Cloud delivers cloud-based services, systems and software to meet the needs of your business.' Below this are five feature cards: 'Release 1.4 enhancements', 'Control access', 'Configure security', 'On-demand support', and 'Enterprise+'. At the bottom, there are 'Purchase options' and 'Watch the demo' sections.

More at: [ibm.com/cloud/solutions/enterprise](http://ibm.com/cloud/solutions/enterprise)

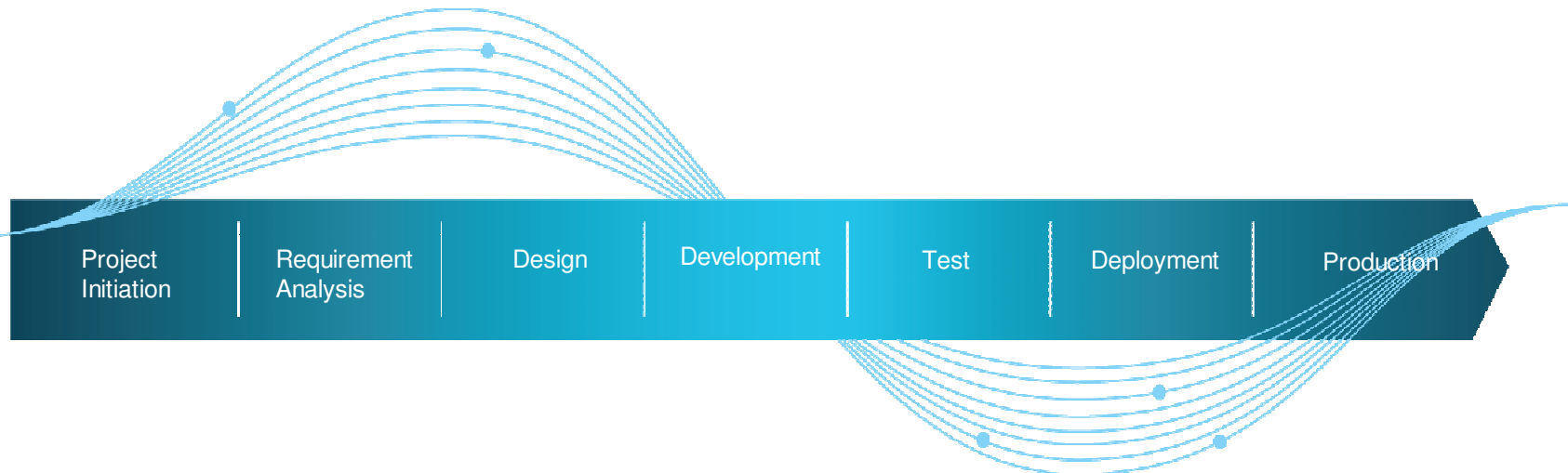
## Agile Infrastructure for Myriad of Workloads for the Enterprise

- Enterprise Governance
- Enterprise Communities
- Global offering with support for multiple currencies, languages and time zone aligned services
- Choice of nine virtual (Intel) server configurations
- Choice of pre-configured IBM and third party software images from which to build private image libraries
- Virtual Private Network (VPN/VLAN) services
- Multiple VLANS for Single Virtual Machine
- Enterprise level Support Options.
- Choice of world-wide centers: Raleigh (US), Boulder(US) & Ehningen (Germany), Toronto (Canada), Makuhar (Japan), Singapore and many more

## Payment options: Simple Usage based options

- Pay-as-you-go, Bring-Your-Own-License, Developer-Use-Only, Pre-Release
- Reserved Capacity Options

# The benefits of cloud can be realized across the entire application lifecycle...



Value Delivered:	From traditional	To cloud
Setting up a development environment	Days	30 minutes
Test provisioning	Weeks	Minutes
Release management	Weeks	Minutes
Change management	Months	Days or hours
Application delivery management	1 operator for 10 apps	1 operator for 100 apps

## Summary



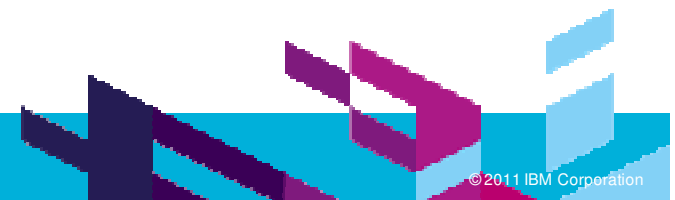
- The cloud is an enabler for achieving efficient software delivery
- Extend the value of your Jazz investments through a virtualized, standardized and automated Cloud deployment
  - ▶ Reduce costs of infrastructure and labor
  - ▶ Improve control, governance and consistency of deployments
  - ▶ Shrink time to value through self-service and instant-on productivity
  - ▶ Provide a secure and robust development resources for globally-distributed teams
- Use your cloud or ours – your Rational investment can be used on public or private clouds



# QUESTIONS



[www.ibm.com/software/rational/cloud](http://www.ibm.com/software/rational/cloud)





[www.ibm/software/rational](http://www.ibm/software/rational)

© Copyright IBM Corporation 2011. All rights reserved. The information contained in these materials is provided for informational purposes only, and is provided AS IS without warranty of any kind, express or implied. IBM shall not be responsible for any damages arising out of the use of, or otherwise related to, these materials. Nothing contained in these materials is intended to, nor shall have the effect of, creating any warranties or representations from IBM or its suppliers or licensors, or altering the terms and conditions of the applicable license agreement governing the use of IBM software. References in these materials to IBM products, programs, or services do not imply that they will be available in all countries in which IBM operates. Product release dates and/or capabilities referenced in these materials may change at any time at IBM's sole discretion based on market opportunities or other factors, and are not intended to be a commitment to future product or feature availability in any way. IBM, the IBM logo, Rational, the Rational logo, Telelogic, the Telelogic logo, and other IBM products and services are trademarks of the International Business Machines Corporation, in the United States, other countries or both. Other company, product, or service names may be trademarks or service marks of others.