

Innovate2010

The Rational Software Conference

Let's **build** a smarter planet.

Delivering Innovations with the Labs

Dr P. Gopalakrishnan,
Vice President , IBM India Software Labs

The premier software and product delivery event.



Innovation Defined



Innovation resides at the intersection of invention and insight, leading to the creation of social and economic value.

National Innovation Initiative



3 Idiots innovation

Search

About 2,130,000 results (0.10 seconds)

[Advanced search](#)

Everything

▼ More

The web

Pages from India

Any time

Past 2 months

▼ More search tools

[3 Idiots recognises innovation, pays inventors](#)

4 Jan 2010 ... Chetan Bhagat created a controversy over the credit in **3 Idiots**, but the small contributors to the film from the remote areas of Uttar ...

[www.merineews.com](#) › [India](#) - [Cached](#)

[The Hindu : Cities / Madurai : The '3 Idiots' of Madurai](#)

5 Jan 2010 ... The recently released Hindi movie, '**3 Idiots**,' has created waves ... The latest among his **innovations** is a device to detect rail cracks. ...

[beta.thehindu.com](#) › [News](#) › [Cities](#) › [Madurai](#) - [Cached](#)

[Inspired by 3 Idiots, Jaipur students create a Wonder Bike](#)

30 Jun 2010 ... Aamir Khan's cult film, '**3 Idiots**' inspired the students to come up with this **innovation** specially his character of 'Rancho'. ...

[www.ndtv.com/.../inspired-by-3-idiots-jaipur-students-create-a-wonder-bike-34687](#) - [Cached](#)

[3 idiots style innovation happening in India..... | Trends ...](#)

Knowledge Article : **3 idiots** style **innovation** happening in India..... I mean **3 idiots** movie has surely changed the way one thinks these days and there is a ...

[toostep.com/trends/3-idiots-style-innovation-happening-in-india](#) - [Cached](#)

[Innovator network plans giant leap on the back of 3 Idiots - Home ...](#)

30 Dec 2009 ... Innovator network plans giant leap on the back of **3 Idiots**, The inventions were sourced from the National **Innovation** Foundation, ...

[www.nif.org.in/nifnews/Innovator-network-plans-giant.html](#) - [Cached](#) - [Similar](#)

The Changing Nature and Scope of Innovation

Open

Collaborative

Product and Services Innovation

Process Innovation

Business Model Innovation

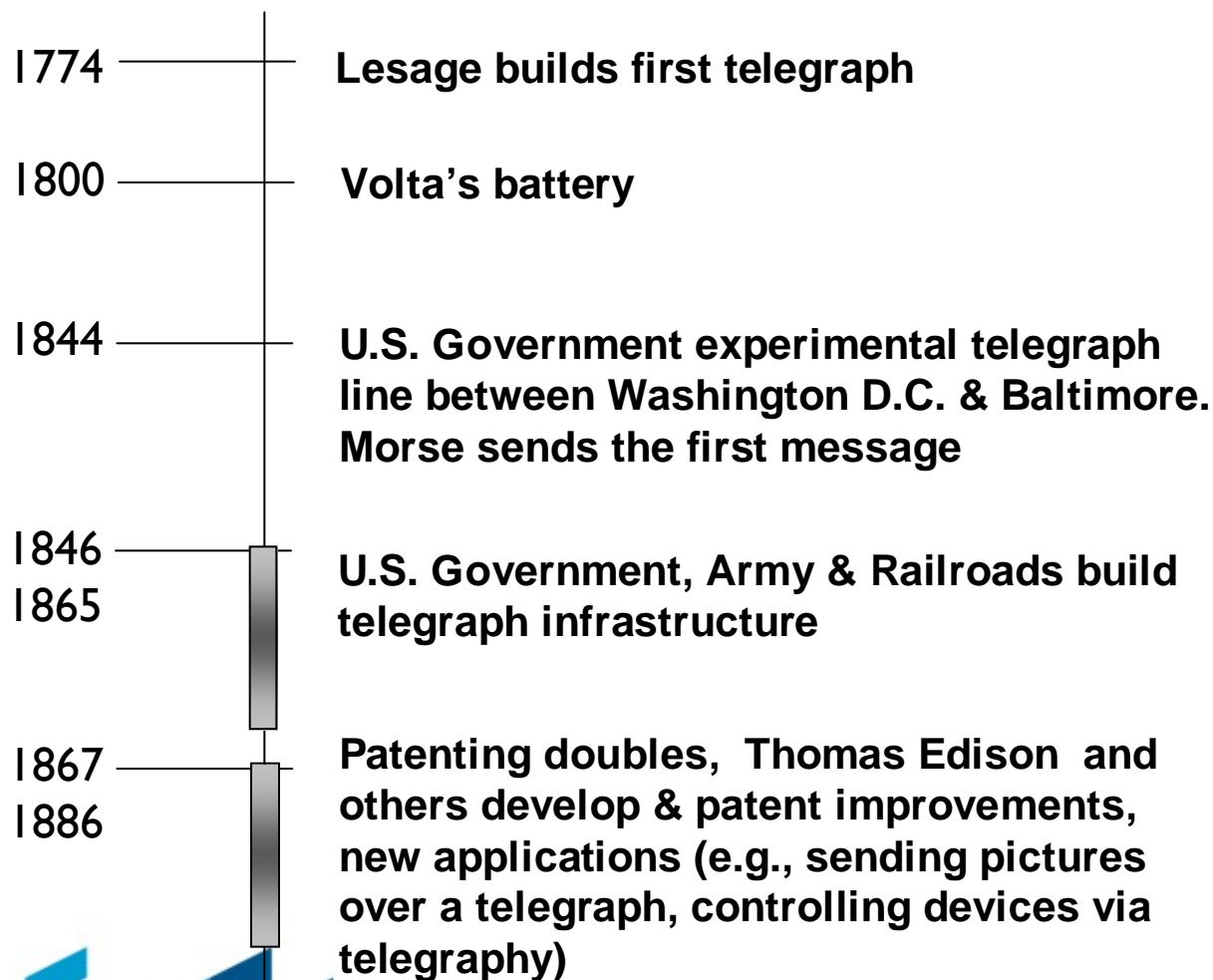
Societal Innovation

Multi-disciplinary

Global

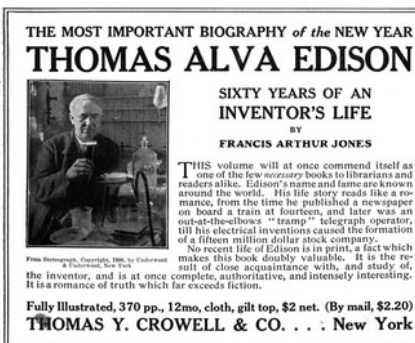
Technology Maturity: Historical pattern

Example: The Telegraph



Other Examples:

- ❖ Automobiles
- ❖ Fixed Wing Flight
- ❖ Electrical Utilities
- ❖ Semiconductors
- ❖ Networking



Historical pattern of technology adoption

Invention

- ❖ Research scientists
- ❖ Experimental
- ❖ Fundamental scientific investigations

Implementation

- ❖ Technology demonstration
- ❖ Emergence of early pioneers and adopters
- ❖ Customized solutions
- ❖ New designs enable volume production
- ❖ Process improvements
- ❖ Infrastructure build up to support growth
- ❖ Incremental product innovation
- ❖ Yield optimization
- ❖ Standardization
- ❖ Ubiquity

Proliferation

- ❖ Applications and solutions
- ❖ Technology utilized in fundamentally new ways
- ❖ New value models built on ubiquitous technologies

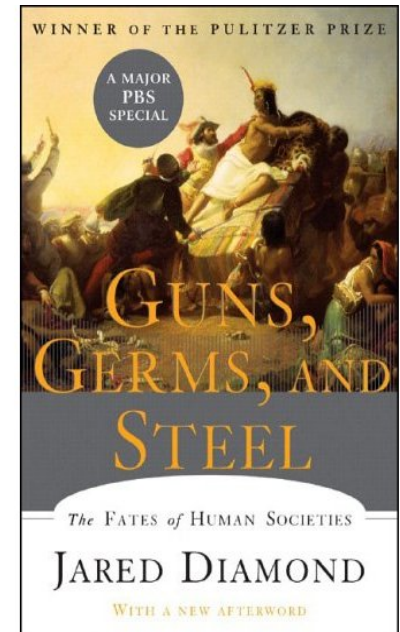
Invention is the mother of necessity?

“My two main conclusions are that technology develops cumulatively, rather than in isolated heroic acts, and that it finds most of its uses after it has been invented, rather than being invented to meet a foreseen need .”

Jared Diamond, *Guns, Germs, and Steel*

Factors influence the acceptance of an innovation

1. Relative economic advantage
2. Social value and prestige that might override economic benefit
3. Compatibility with vested interest
4. Ease with which their advantage can be observed



Technology Innovations from IBM

MCIF

System of Systems

Workbenches

Automated Process Lifecycle

Measured Improvement

Productivity Analytics

Cloud Computing

Collaborative Lifecycle Management

Collaborate Automate Improve

Asset Reuse

Security and Compliance

Business Planning and Transformation

Agility @ Scale

Asset Management and Operations

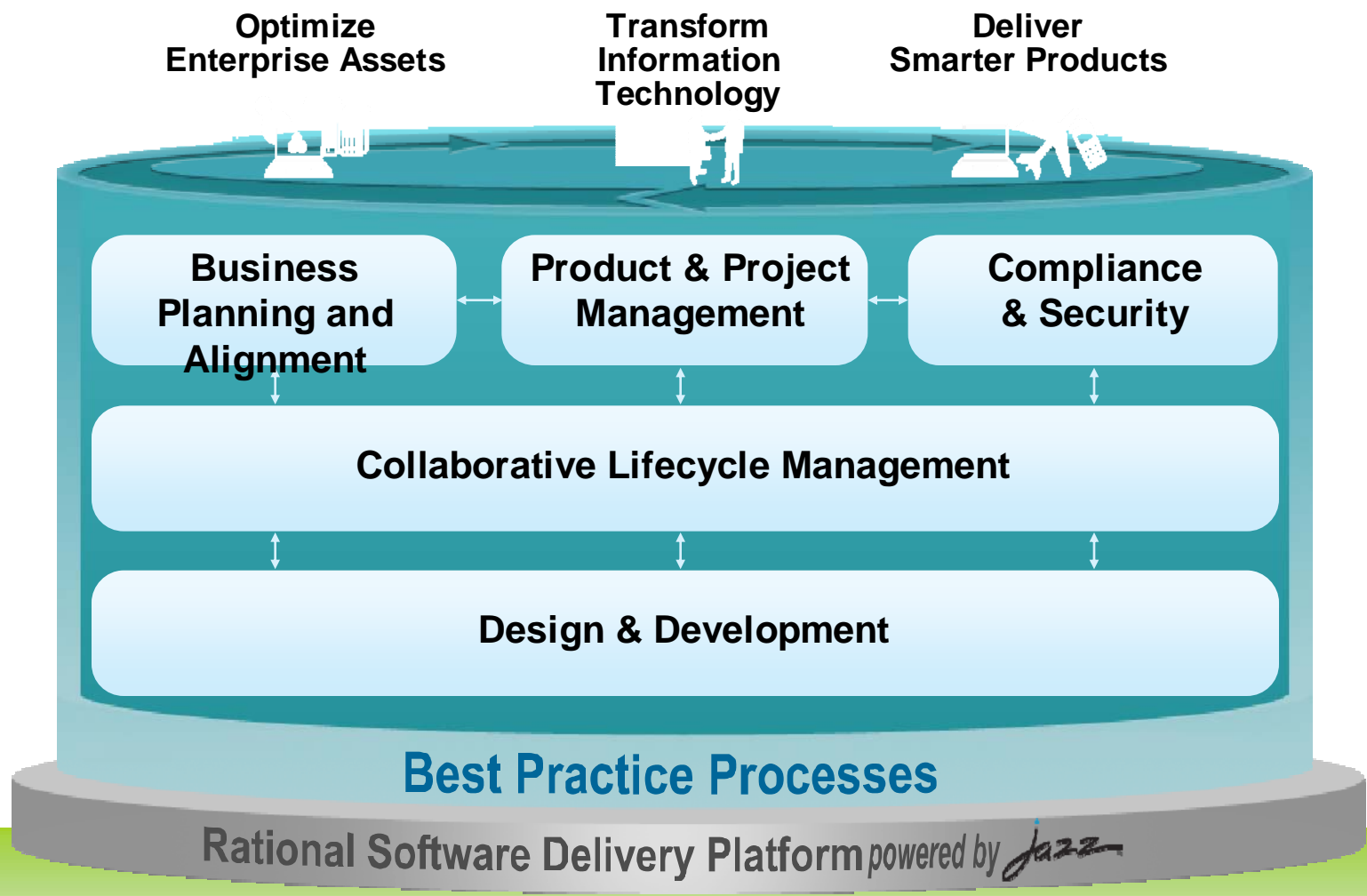
Asset management

Jazz

Business Planning and Alignment

Enterprise Architecture

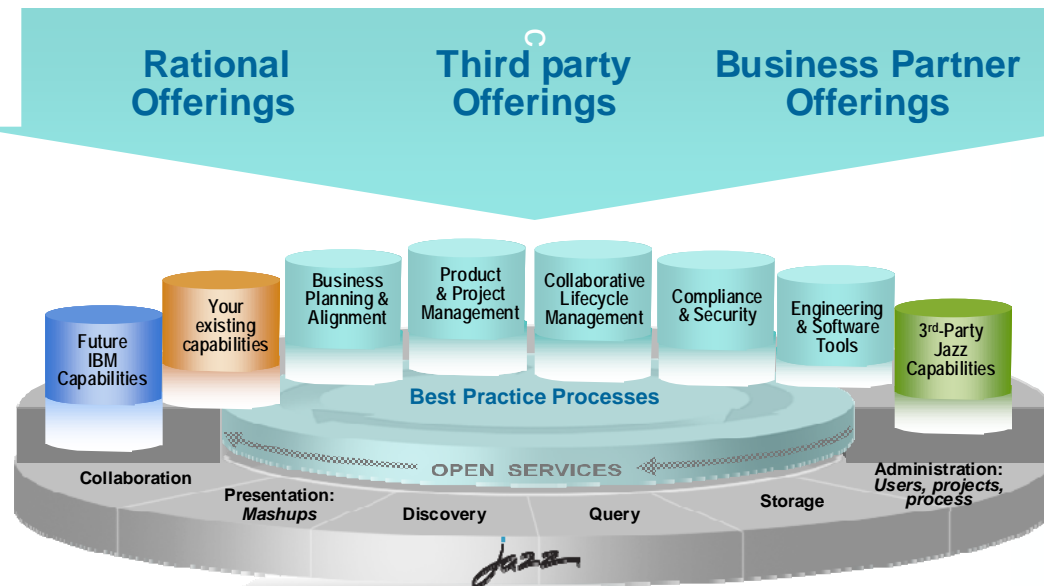
IBM Rational Software Delivery Platform



IBM and Business Partner Ecosystem



An Integrated Delivery Community & Lifecycle for desired outcomes



**Collaborate, Automate,
Report / Analyze**

• *Jazz is...*

- Open Services for Lifecycle Collaboration (OSLC)
- “Eclipse for the Team” on the web
- Integration of ANYTHING across the lifecycle
- Integration architecture enabling mashups and non-Jazz products to participate
- A community at Jazz.net where Jazz products are built

IBM Practices - Agility @ scale at IBM

**26,000+ total
resources
worldwide**

Pittsburg
Poughkeepsie
Princeton
Somers
Southbury
NY, NY

Andover
Bedford, MA
Bedford, NH
Lexington
Westborough
Westford
Cambridge

Cork
Dublin
Galway

London/Staines
Milton Keynes
Hursley
Warwick
York

- **Over 100 Rational development projects (~2000 users) using Rational Team Concert**
- **More than 150 other projects around IBM**
 - ▶ For example – GBS Application Factory (AF) team currently hosting 3000+ users
- **Boarding time for new projects - less than one day**
- **Applicable to agile/iterative and waterfall projects**

- **Rational Development**
- **Rational Customer Support**
- **WebSphere Development**
- **Lotus Development**
- **Tivoli Development**
- **IBM Research Division**
- **IBM Global Business Services**

El Salto

Dallas

Sao Paulo

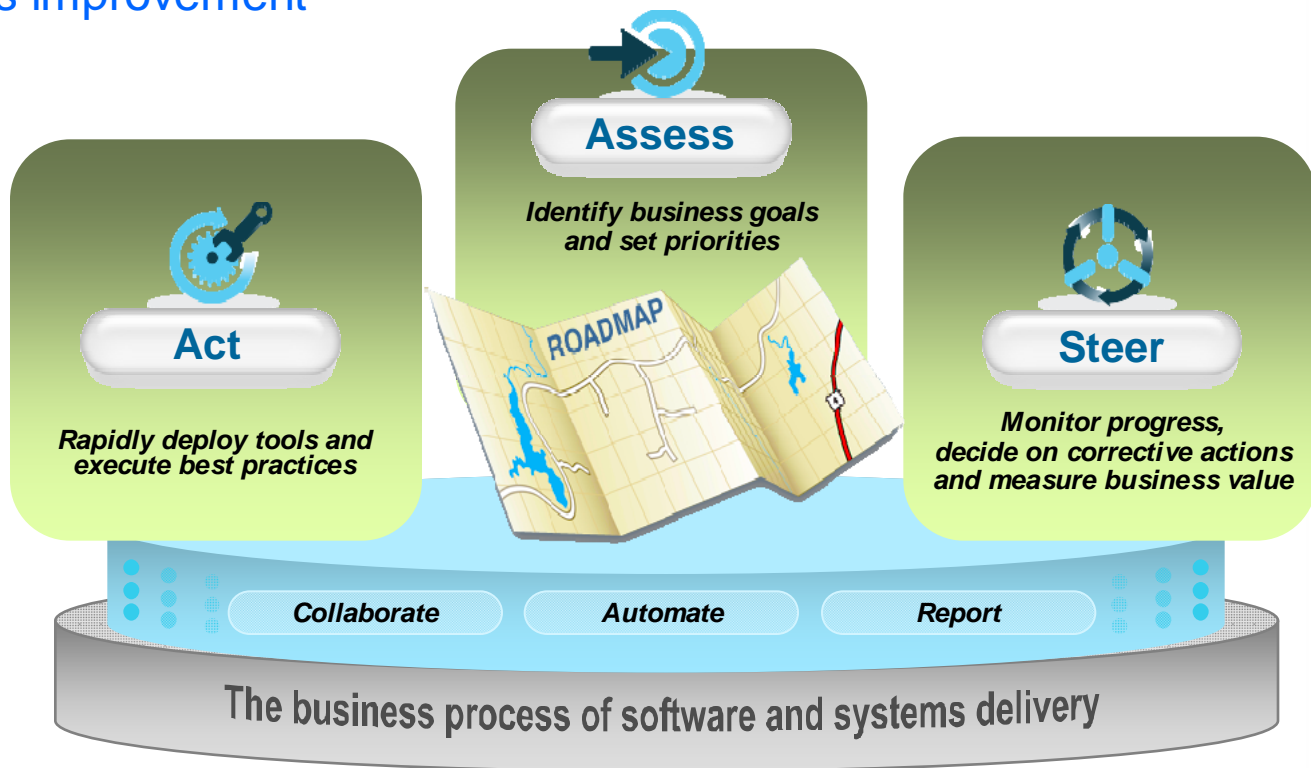
Understand, quantify,
measure and predict
business outcome



Measured Improvement - Drive business innovation and reduce costs through measured and continuous process improvement

Captures over 10 years of Rational experiences in incremental adoption

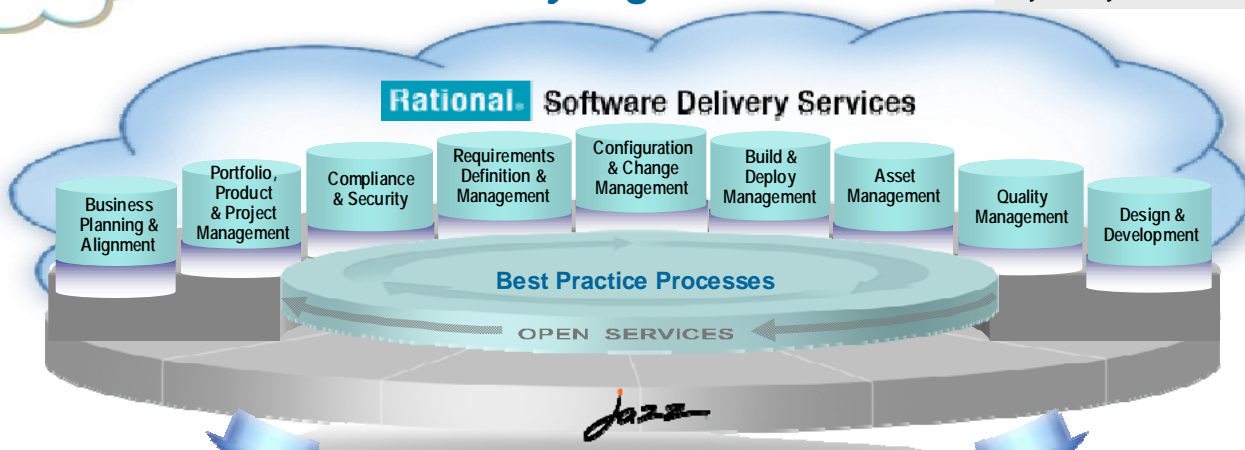
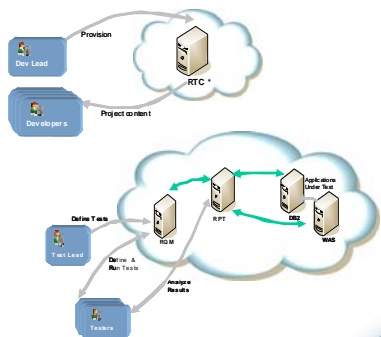
- Used in over 80 IBM agile projects
- Used in conjunction with RUP, XP, Scrum and other processes
- Demonstrated in the Rational Executive Dashboard



Software delivery services for cloud computing

Transforming development and test with cloud

The move to a cloud infrastructure drive standardization, automation and process improvement in your software delivery organization



Private Clouds



IBM Smart Business Services
IBM CloudBurst Appliance

IBM Cloud

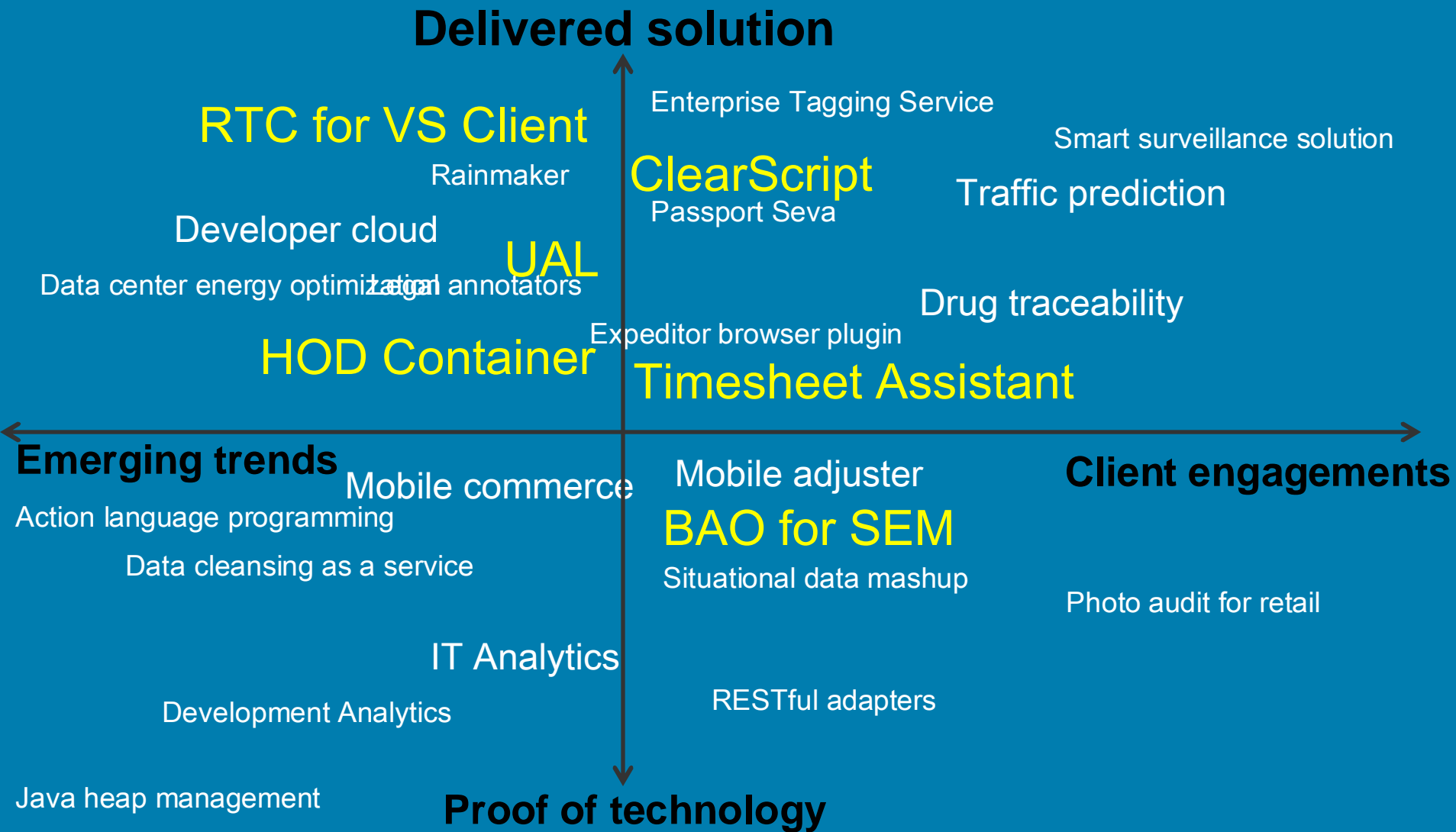


IBM Smart Business Services

Clouds

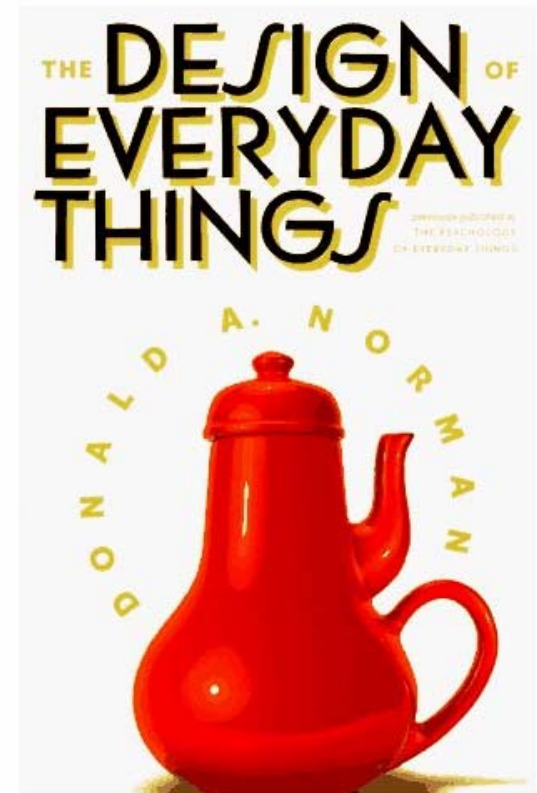


Technology innovations from the India Software Lab



Keep it simple

*“Technology changes very fast.
But human beings evolve much
more slowly...”*



ClearScript

Extensible easy-to-understand language for testers

Business challenge

- Bulk of testing is still manual causing schedule risks, lack of agility and increased costs

Solution

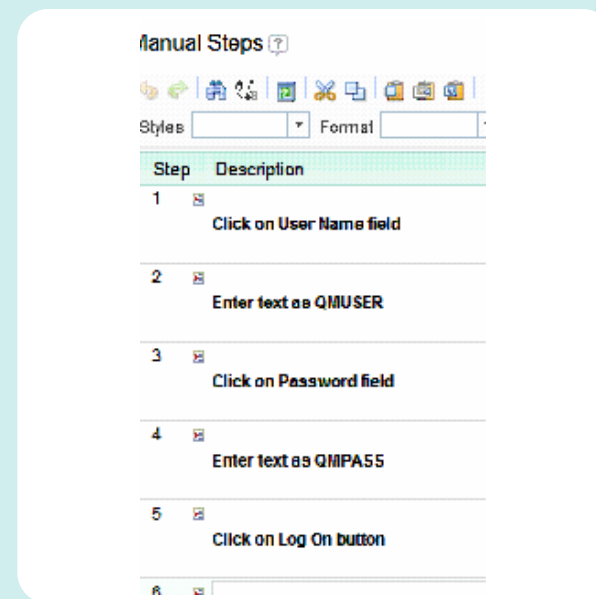
- Designing an extensible easy-to-understand language for testers, using which they could write automated scripts

Benefits

- Accelerated automation
- Improved coverage and tracking with requirements
- Enable business analysts to write automated tests

Solution components

- IBM Rational Quality Manager
- IBM Rational Functional Tester with collaboration from IBM Research



BAO (Business Analytics and optimization) for SEM (Sustaining Engineering & Maintenance)

Framework for measuring & improving efficiency of Sustaining Engineering and Maintenance projects

Goal

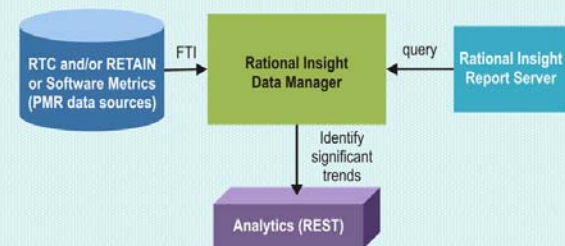
- "Improve efficiency by 10%" - for Sustaining Engineering and Maintenance projects in the lab.

Solution

- Rational Insight based dashboard with metrics derived from analysis of defect trends.
- Dashboard enables team to efficiently track trend changes in the data to trigger appropriate actions

Solution components

- IBM Rational Insight



Activity Tracker & Effort Calculator

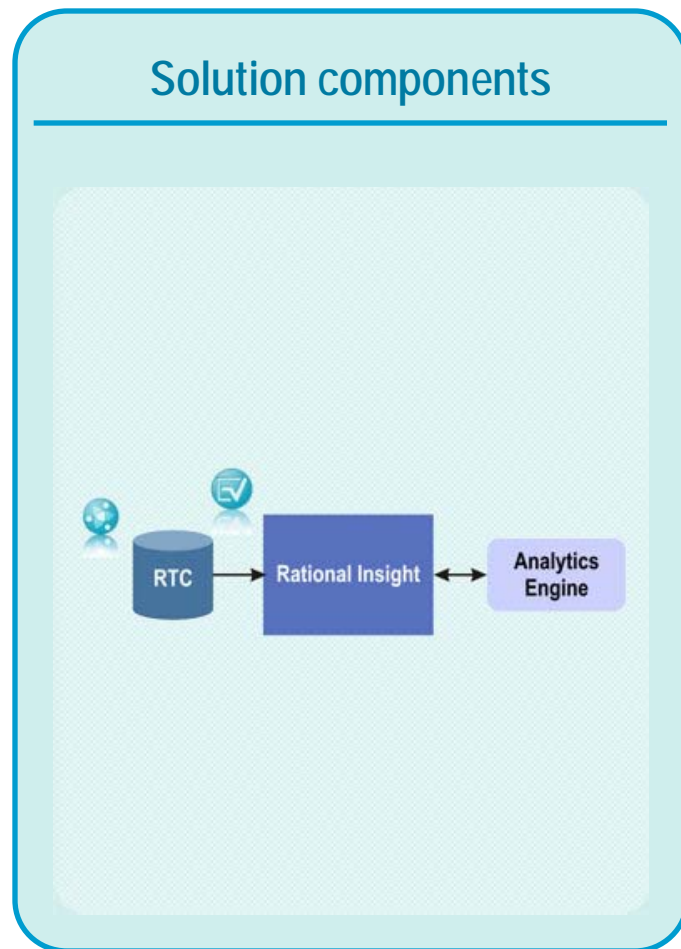
Framework for tracking, analyzing & calculating efforts related to a task.

Goal

- Assist Project managers in validating time submitted by developers
- Assist Project managers in detecting anomalies in activities related to a task
- Assist Developers in submitting timesheets.

Solution

- Rational Insight based dashboard with metrics derived from analysis of tasks.



Host on Demand Container

Enables integration of Host applications with other applications in an IBM Composite Application.

Business challenge

- Optimizing the information needed by the employees of an enterprise to accelerate its business processes and increase productivity.

Solution

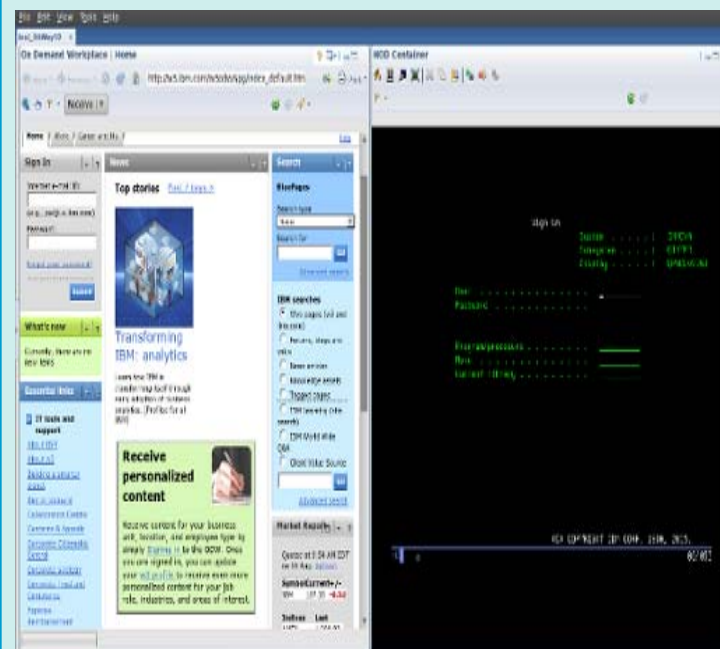
- Plugin for HOD Container, within Lotus Expeditor, to enable interaction with a host of other applications like Web Browser, Spreadsheet etc

Benefits

- Accelerated business processes.
- Provides an integration hub for transactional messaging for satellite locations of an enterprise.
- Built on standards-based framework and can be integrated with a wide variety of applications.

Solution Components

- IBM Rational Host On-Demand, IBM Lotus Expeditor



Extending the reach of IBM Jazz Platform

IBM Rational Team Concert for Microsoft® Visual Studio IDE

Business Challenge

- Extend the reach of Jazz platform to Microsoft .NET developers.

Solution

- Implement Rational Team Concert right inside Microsoft Visual Studio IDE.

Benefits

- Enabled large enterprises to use IBM Jazz Platform for .NET as well as Java development.
- Provided first-class, seamless integration into Microsoft Visual Studio IDE.
- Brought to Microsoft .NET developers the flexibility of Agile development, the power of collaboration, and other benefits of RTC and IBM Jazz Platform.

In a nut-shell

- First-ever full-fledged Jazz client implemented fully in Microsoft .NET
- Positioned Jazz Platform as a viable collaborative development environment for Microsoft .NET developers.
- Practices open commercial development in true Agile way at <http://jazz.net/> where milestone builds are posted for early feedback from stakeholders.



Rational Team Concert

A collaborative software development environment



Visual Studio
PARTNER

Visual Studio IDE

Innovators know the Power of the “Right” Model

- Selecting the right model for the job matters

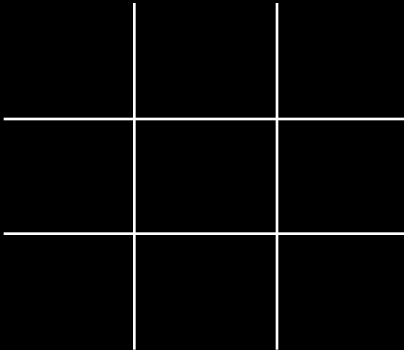
Good models go beyond description – they support insight & action

Example: “Game of 15”

Winner: First one to reach exactly 15 with any 3 chips



First model – A is  and B is  – what is B’s move?

Second model –  – B’s move is 6!

After Don Norman

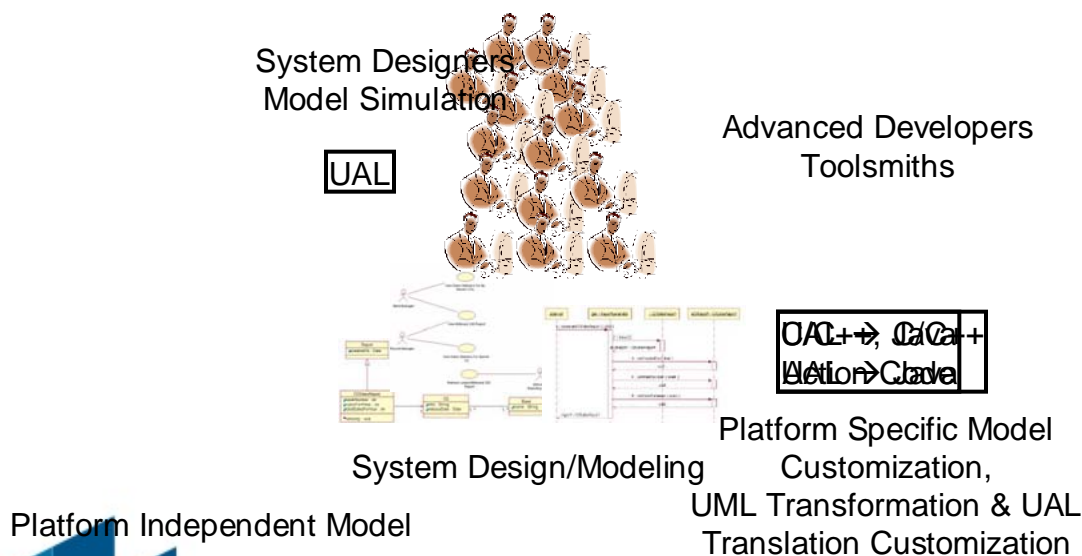
Executable Models using UML Action Language (UAL)

Business Challenge

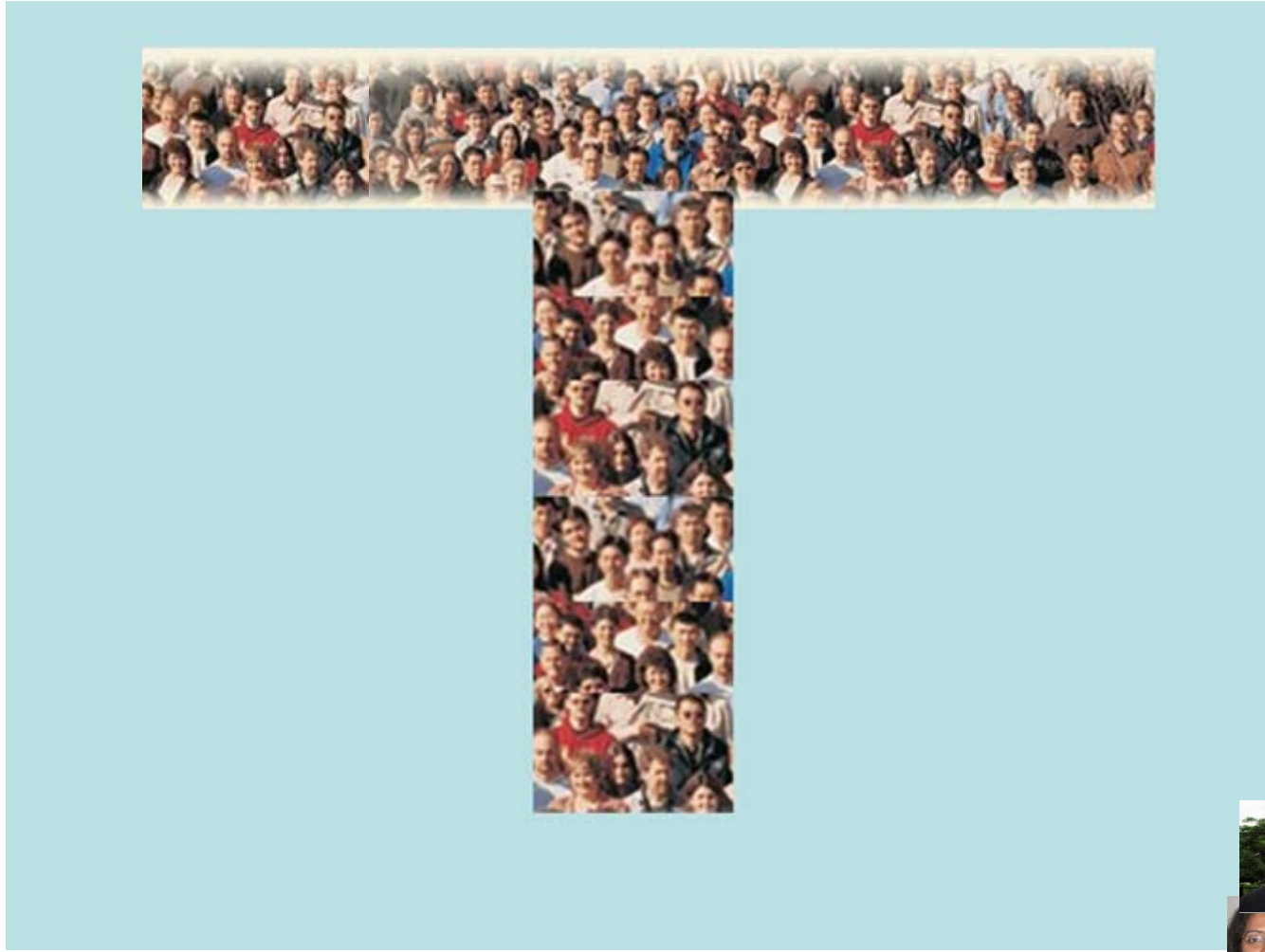
- Model Driven Development (MDD) practitioners follow “Model is Code” philosophy
- Generate fully functional code from UML models with embedded C++/Java code snippets to describe behavior
- Issues:
 - Writing code snippets is not easy: System Designers are domain expert and not C++ or UML Transformation expert
 - Reuse of same model for multiple platform not possible: C++/Java code tuned for a platform
 - Late detection of defects: opaque behavior prevents simulation early in development cycle

Solution

- UML Action Language (UAL) for encoding behavior in RSA family of products
- Model Simulation, Execution & Debugging: model animation with familiar notions, e.g. breakpoints, step, continue
- Benefits:
 - Increase productivity of engineers by raising the level of abstraction to UAL
 - Increase % of reusability systems/components: generate code for different platforms from same model
 - Reduce cost of defect fixing by detecting them early: Simulation of components as well as full system



Our innovators have breadth and depth



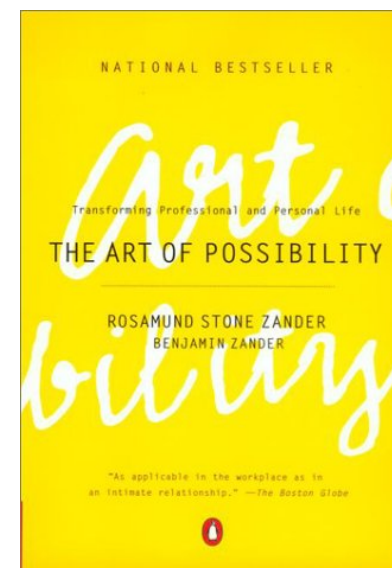
Our innovators see possibilities ...

A shoe factory sends two marketing scouts to a remote region to study the prospects of expanding business. One sends back a telegram saying...

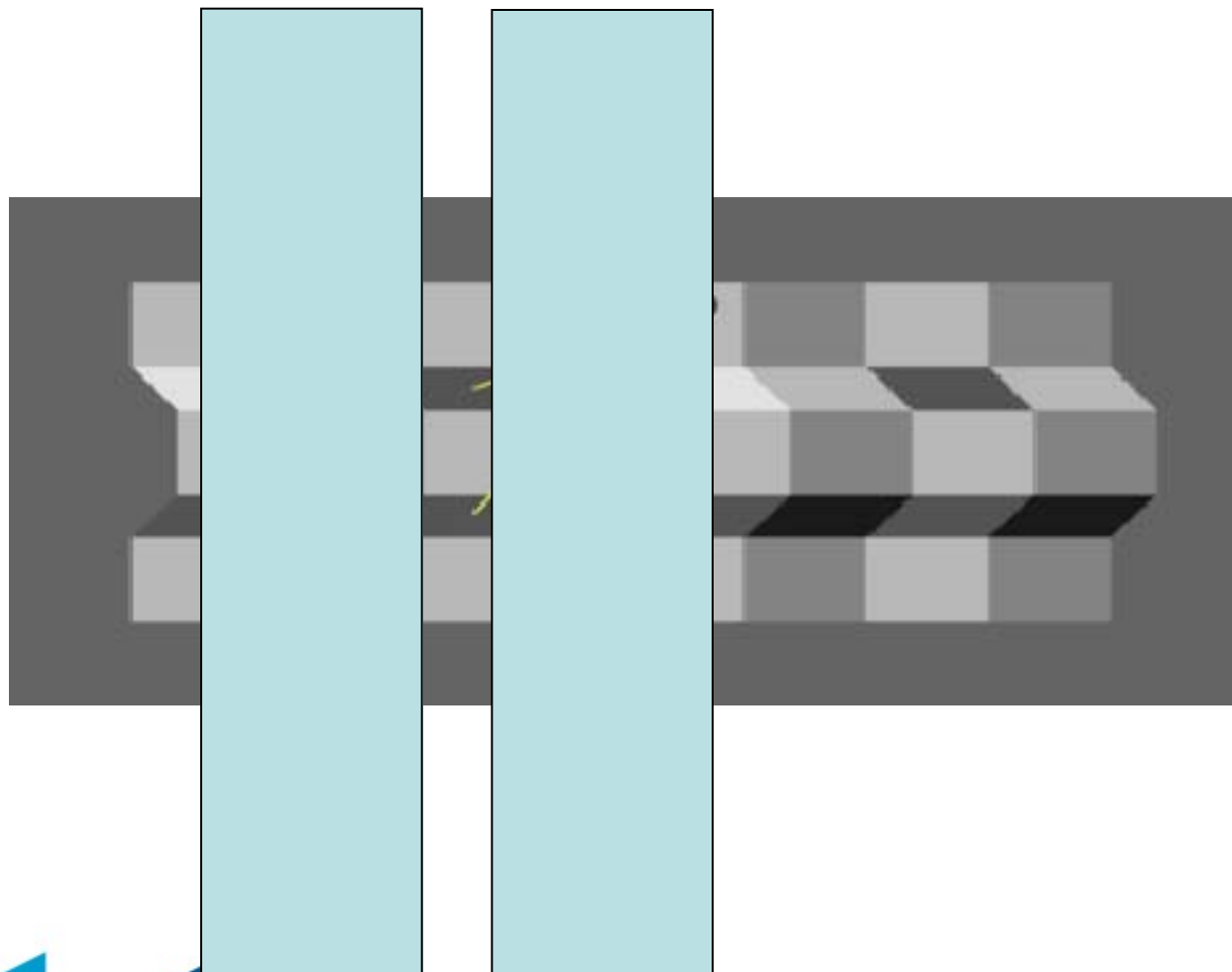
SITUATION HOPELESS NO ONE WEARS SHOES

The other writes back...

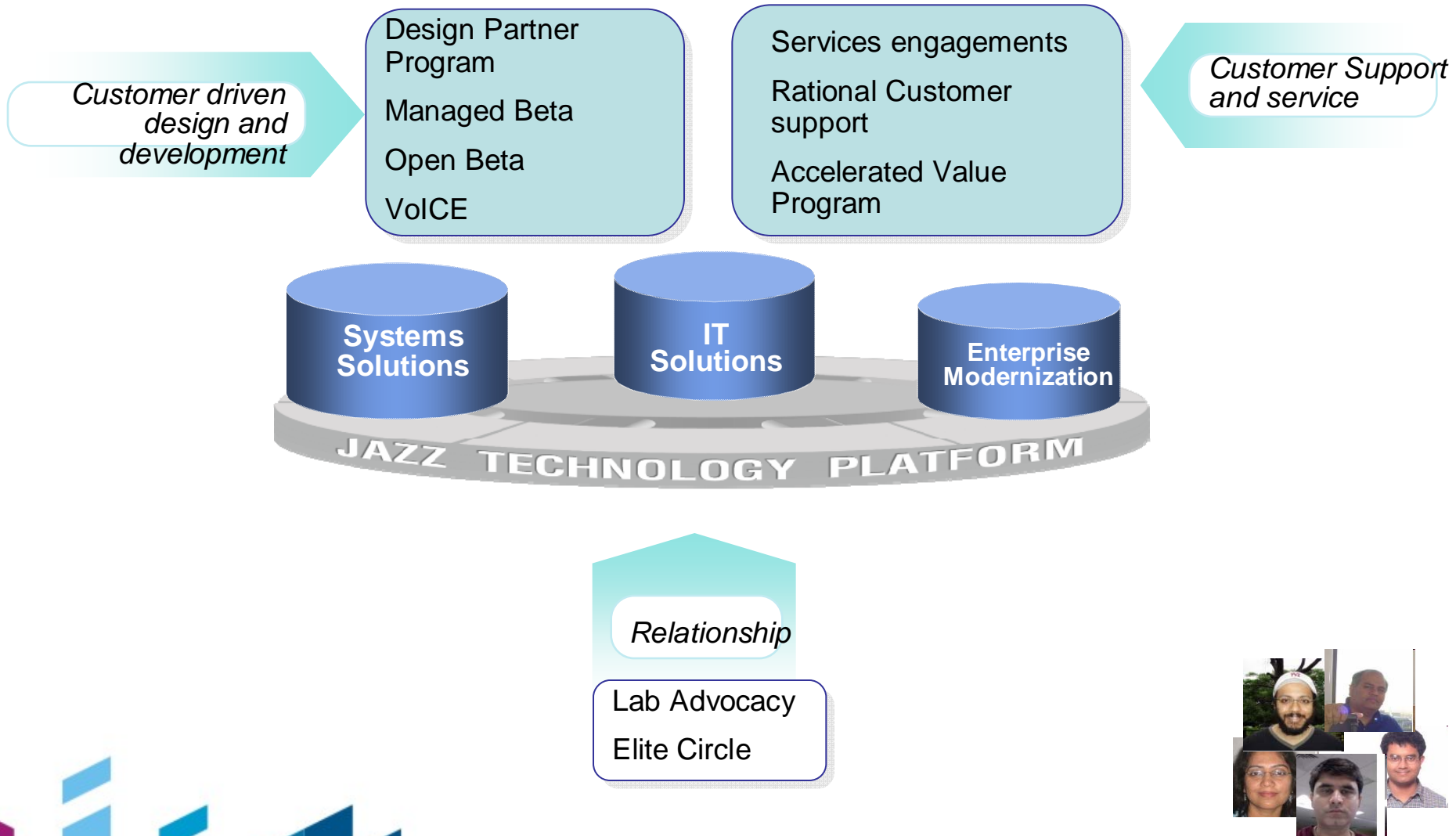
**GLORIOUS BUSINESS OPPORTUNITY
THEY HAVE NO SHOES**



Our innovators question assumptions ...



Need to connect with our innovators?

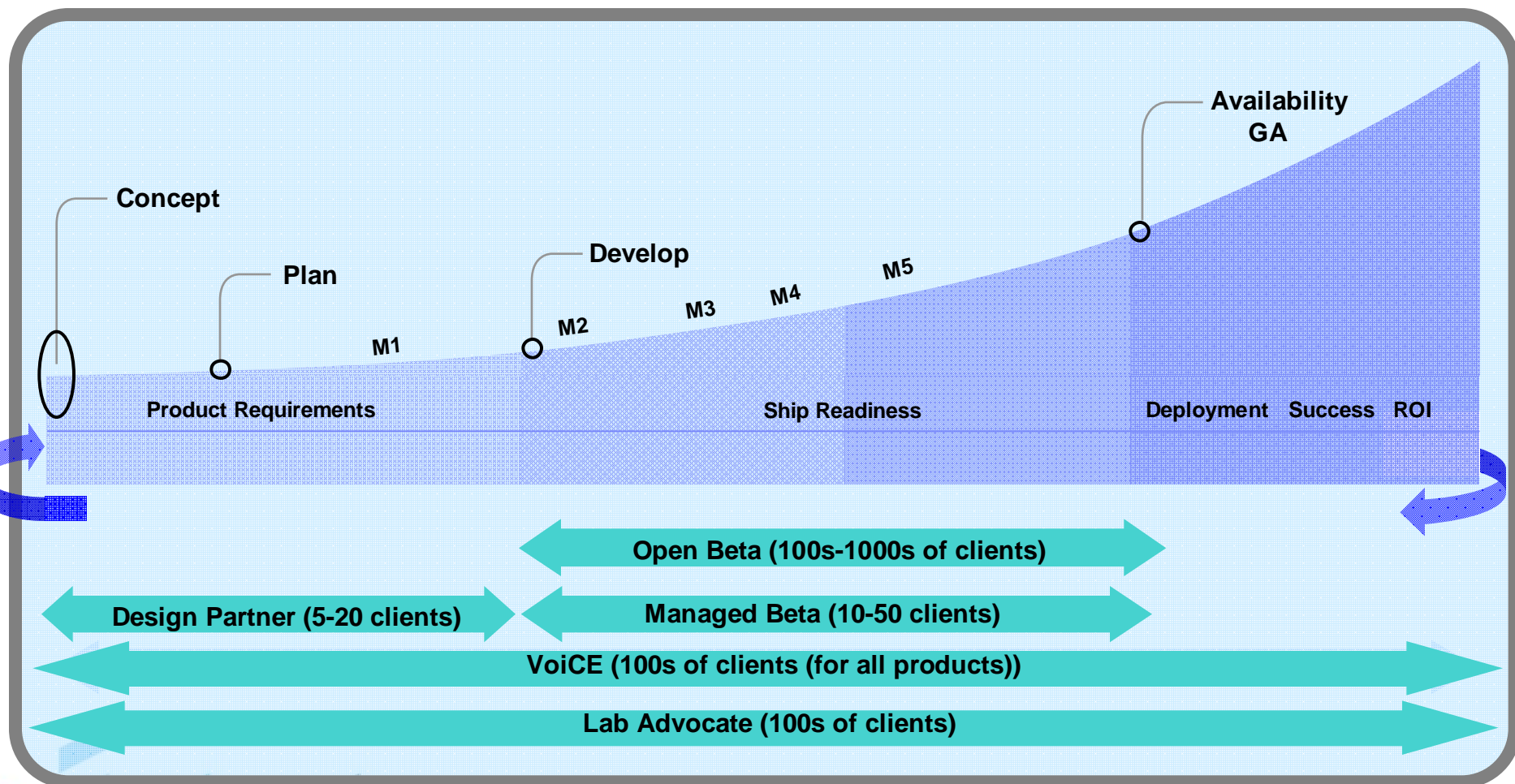
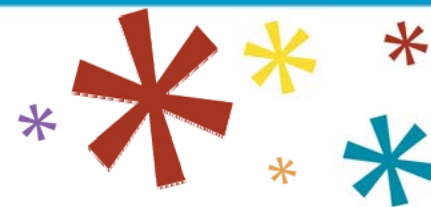


Rational Client Programs at a Glance

Involving clients - at all levels – across the product lifecycle

| | |
|------------------------------------|-------------------------------------------------------------------------------|
| <i>VoiCE</i> | <i>Expanded audience Design Partner Interaction</i> |
| <i>Lab Advocates</i> | <i>Top technical leader assigned to assist the account team</i> |
| <i>Design Partner Program</i> | <i>Clients become an integral part of our product teams</i> |
| <i>Beta Programs</i> | <i>Clients receive pre-GA code enablement results in references and leads</i> |
| <i>Rational Global User Groups</i> | <i>Independent local user groups</i> |
| <i>Board of Advisors</i> | <i>Senior Executive level interactions on business strategy</i> |
| <i>Jazz.net</i> | <i>Online community showcasing our Jazz based offerings</i> |
| <i>Accelerated Value Program</i> | <i>Dedicated support engineer assigned to your account</i> |
| <i>Elite Circle</i> | <i>A community of Elite IBM customers</i> |

Client Programs available during the product development cycle



Innovate2010

The Rational Software Conference



THANK YOU

