

IBM Software

Innovate2012

The Premier Event for Software and System Innovation

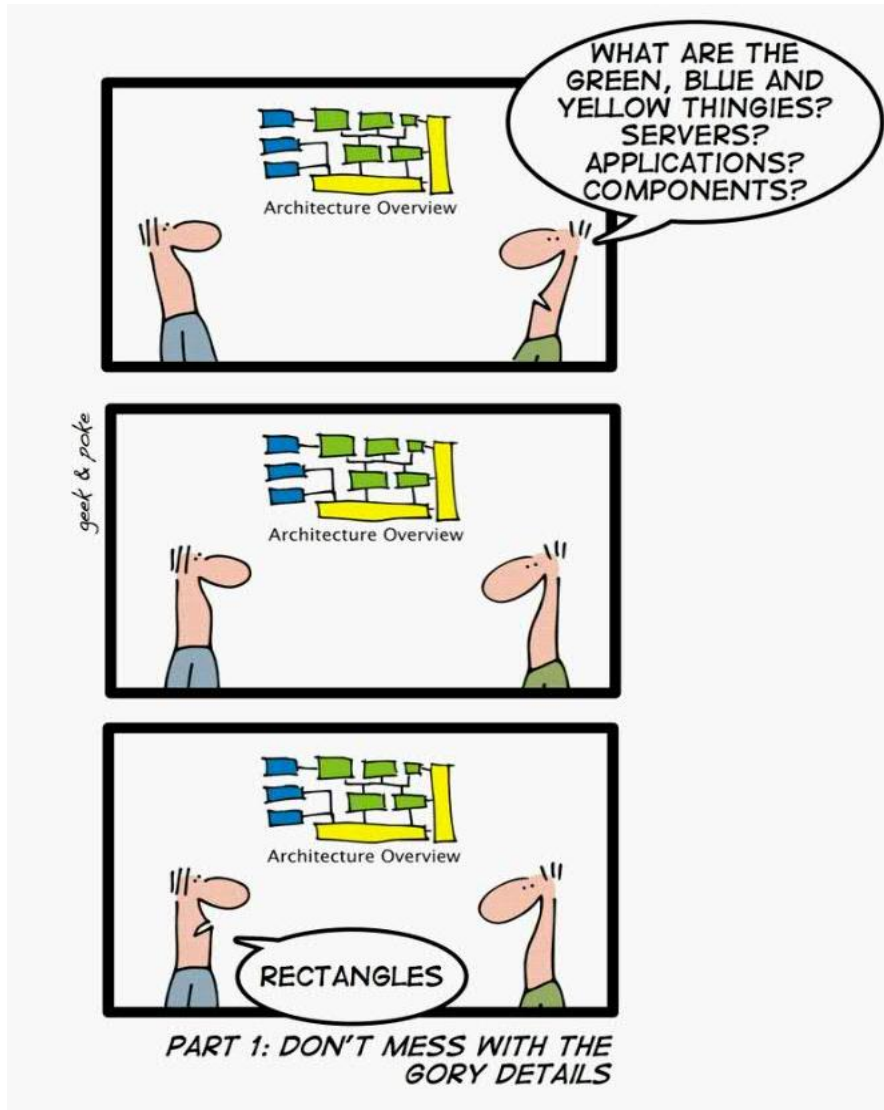
Next  NOW!



Actionable Enterprise Architecture

Nagabhushan S S

Architecture?



Businesses are facing an unparalleled rate of change



Successful businesses use enterprise architecture to their competitive advantage

Why Enterprise Architecture Is Key

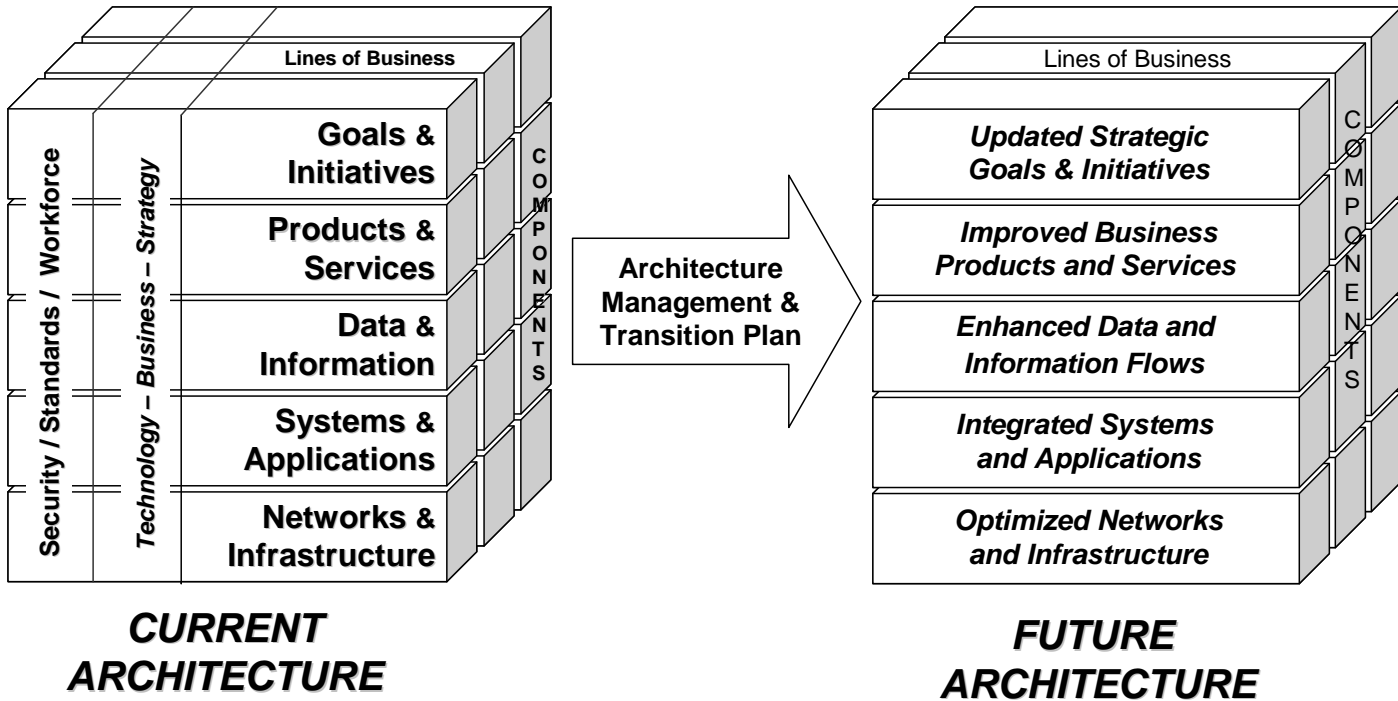


- “If you don't know where you're going, *any road will* take you there (to success)”

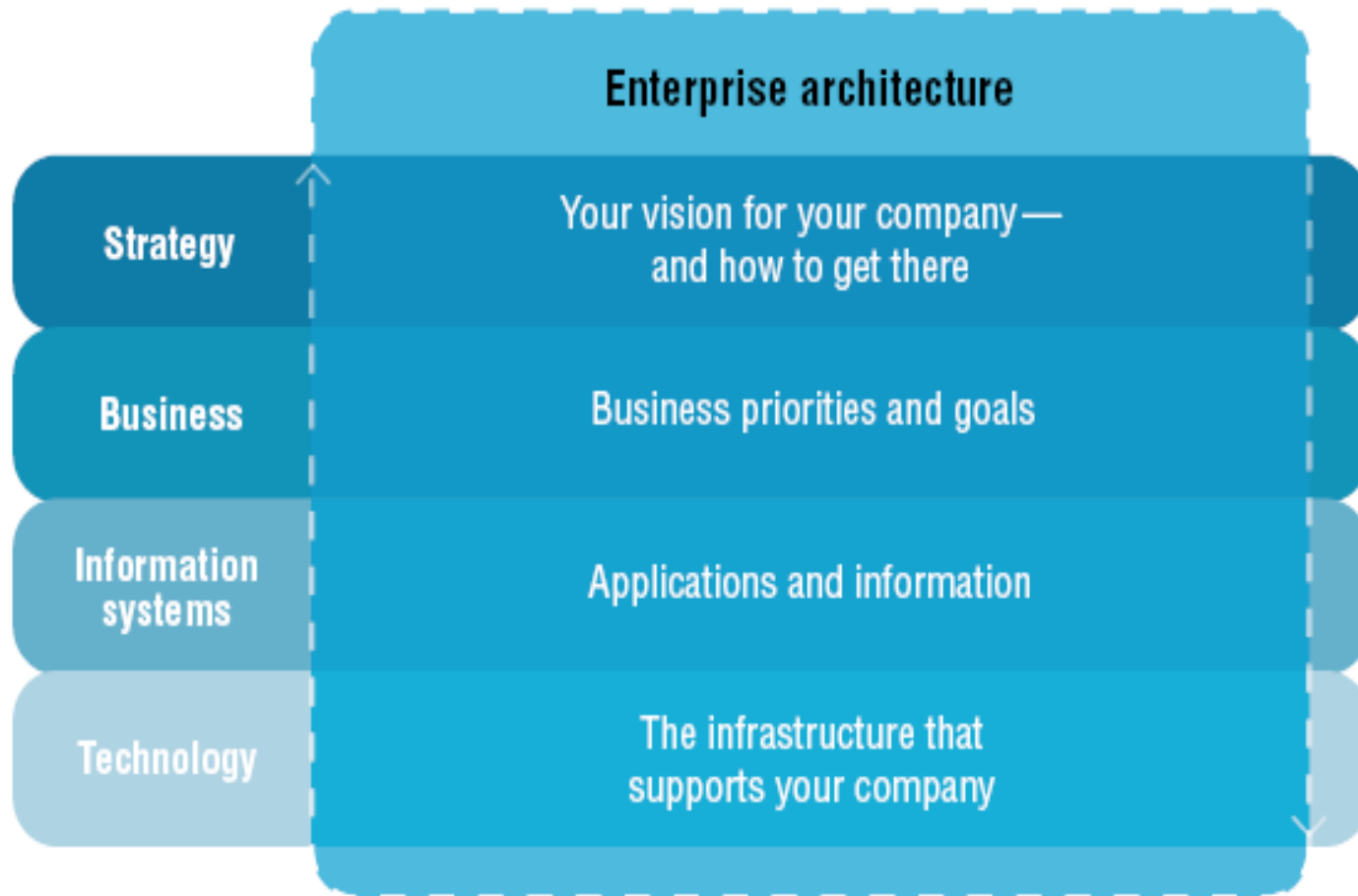
The Concept of Enterprise Architecture - Defined

Enterprise Architecture: The analysis and documentation of an enterprise in its current and future states from a strategy, business, and technology perspective. **$EA = (S + B + T)G$**

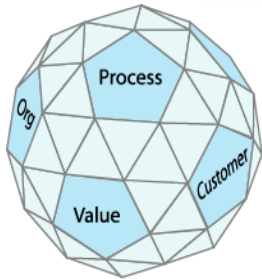
An Introduction to Enterprise Architecture © 2005



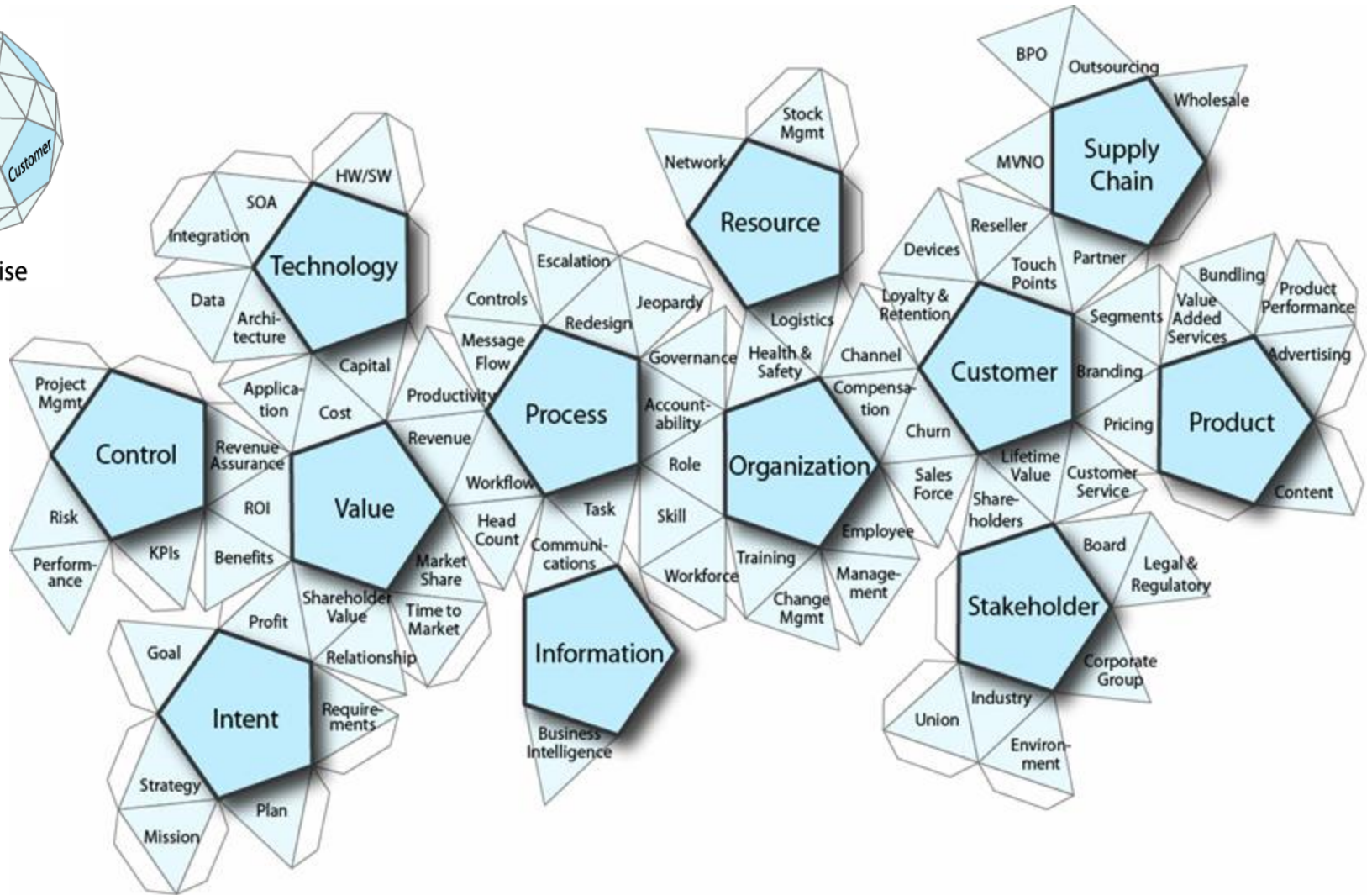
Enterprise Architecture domains



Holistic View of the Enterprise



The Enterprise



IBM's Actionable Enterprise Architecture Solution

Performance Monitoring and Measurement

Enterprise Architecture

(Business-IT Alignment, Enterprise Transformation)



Transformation Plan and Initiatives

Portfolio Management

(Cost/Risk/Benefit Analysis, Value Based Selection, Roadmap Alignment)



Prioritized Projects for Execution

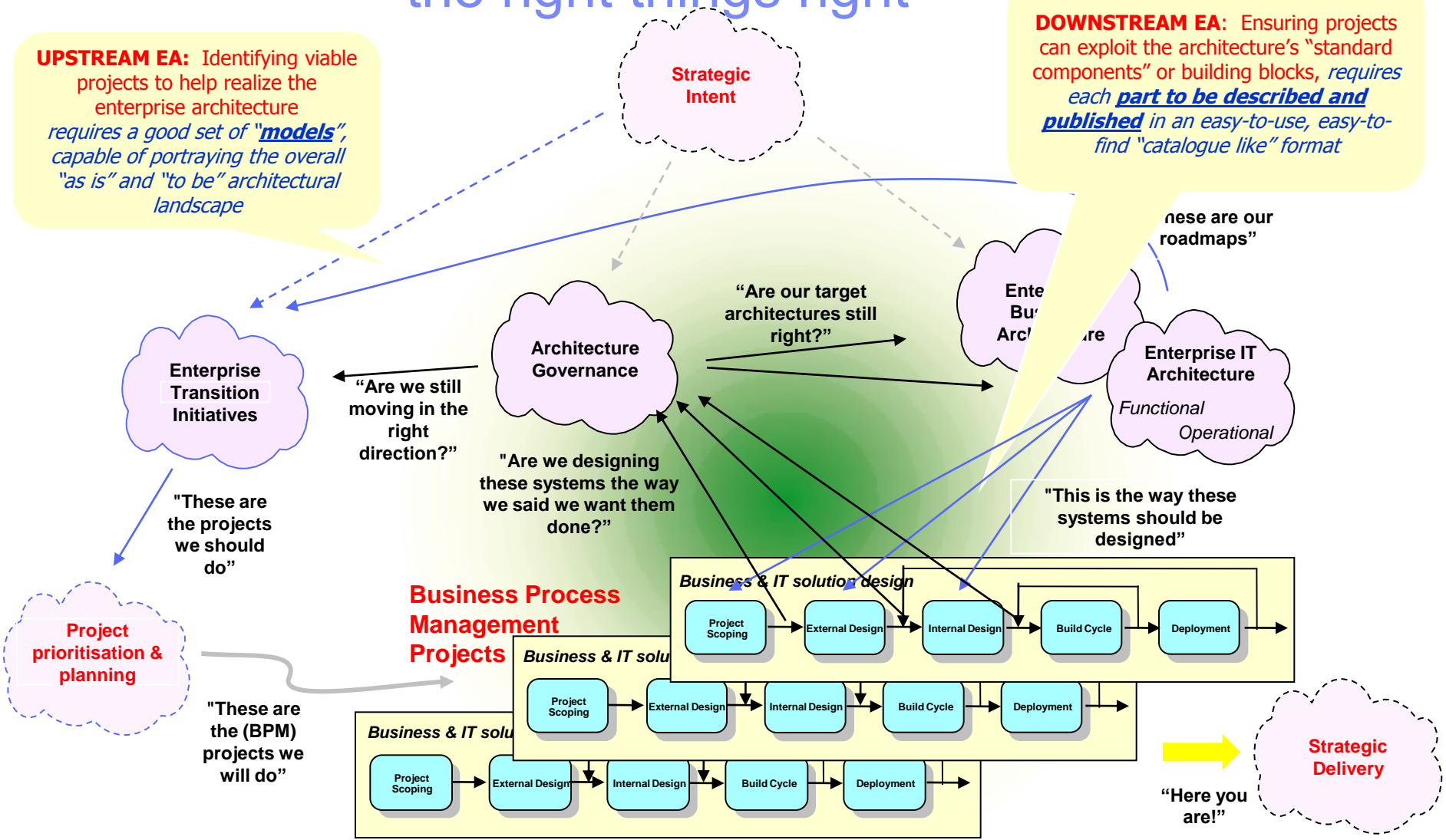
Project Management and Execution

(Scope Management, Time Management, Budget Management, Solution Design and Delivery)

Enterprise Architecture enables organizations to “do the right things right”

UPSTREAM EA: Identifying viable projects to help realize the enterprise architecture requires a good set of *“models”*, capable of portraying the overall “as is” and “to be” architectural landscape

DOWNSTREAM EA: Ensuring projects can exploit the architecture’s “standard components” or building blocks, requires each *part to be described and published* in an easy-to-use, easy-to-find “catalogue like” format

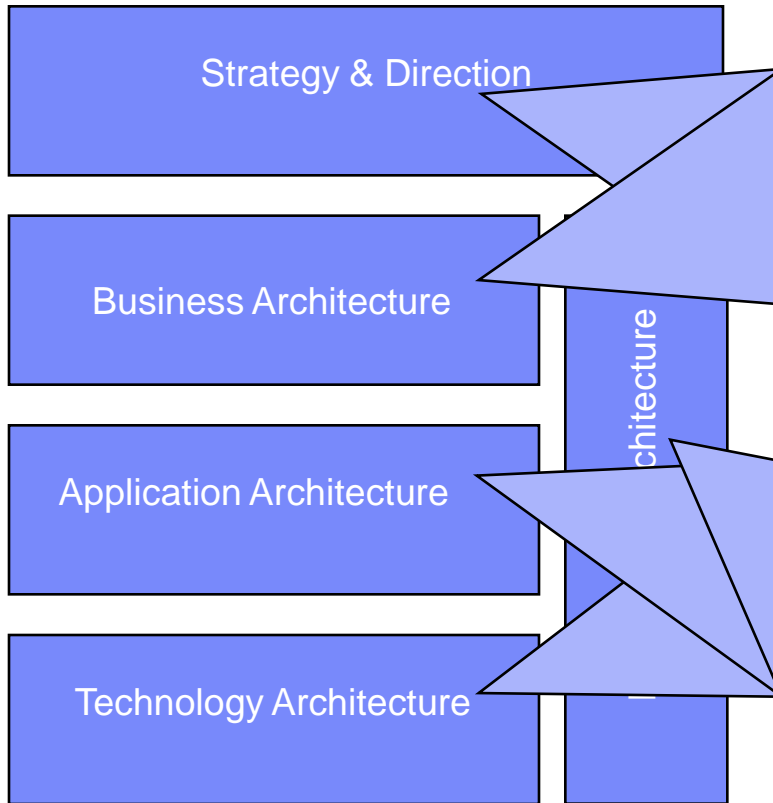


Rational System Architect tool

- ▶ A **repository** based enterprise modeling capability
- ▶ collaborative **capture & modeling*** of the enterprise architecture
- ▶ **Imports** assets & **exports** share EA information for re-use and publication
- ▶ Support **frameworks** & reference models out-of-the box

- ▶ Supports architectures of :
 - enterprise strategy & initiatives
 - business processes, organization (dept/people)
 - information flows
 - Applications
 - Data, hardware, network & infrastructure elements
 - ... and their interdependencies
- ▶ SA's modeling capability spans the enterprise, from high level enterprise strategy to supporting infrastructure and everything in between.
- ▶ Produce **Meaningful Views, impact analysis reports** -Gain **Valuable Insight**

Supports Complete Architecture Frameworks



Business Model (Using TOGAF Business Architecture Diagram Type)

Business Strategy Management	Business Management	Business Model Management	Business Process Management	Business Performance Management
Business Strategy	Business Model	Business Process	Business Performance	Business Strategy
Business Model	Business Process	Business Performance	Business Strategy	Business Model
Business Process	Business Performance	Business Strategy	Business Model	Business Process
Business Performance	Business Strategy	Business Model	Business Process	Business Performance

- Organisation Models
- Business Structure
- Functional Models
- Process Models

For Example:

Areas

AV	AV1	AV2							
----	-----	-----	--	--	--	--	--	--	--

- Harvesting (auto discovery)
- Multiple Method Support
- Multi-user repository
- Extensible Metamodel
- Multi-Framework
- Standards based modeling
- Impact Analysis/Traceability
- Analytics/Heatmaps/Simulations
- Reporting
- Web Publishing
- Model Comparison
- Extended Team Support
- Govern and Control
- Tool interoperability (EA Ecosystem)
- Reference Models

The screenshot displays the Telelogic System Architect XT interface. At the top, it shows the user is logged in as 'demo' and there is one user logged in. The main workspace contains several diagrams and reports:

- tmforum**: A central diagram with a large logo and various colored boxes representing different business processes.
- Supply-Chain Operations Reference-model**: A diagram showing a flow from left to right, with various components and data points.
- Client Integrations**: A box listing Eclipse, Web 2.0, and Visual Studio (4Q).
- Server Integrations**: A box listing Existing IBM offerings, Business Partner offerings, and Open source offerings.
- IBM Industry Models For Financial Services - The Information Framework (IFW)**: A complex diagram with many interconnected nodes and boxes.
- Customer**: A table at the bottom with columns for Date, Attribute, and Value. It shows data for 1/12/2009.

On the right side, there is a search bar and a list of links for SA ITEMS, BOOKMARKS, and LINKS.

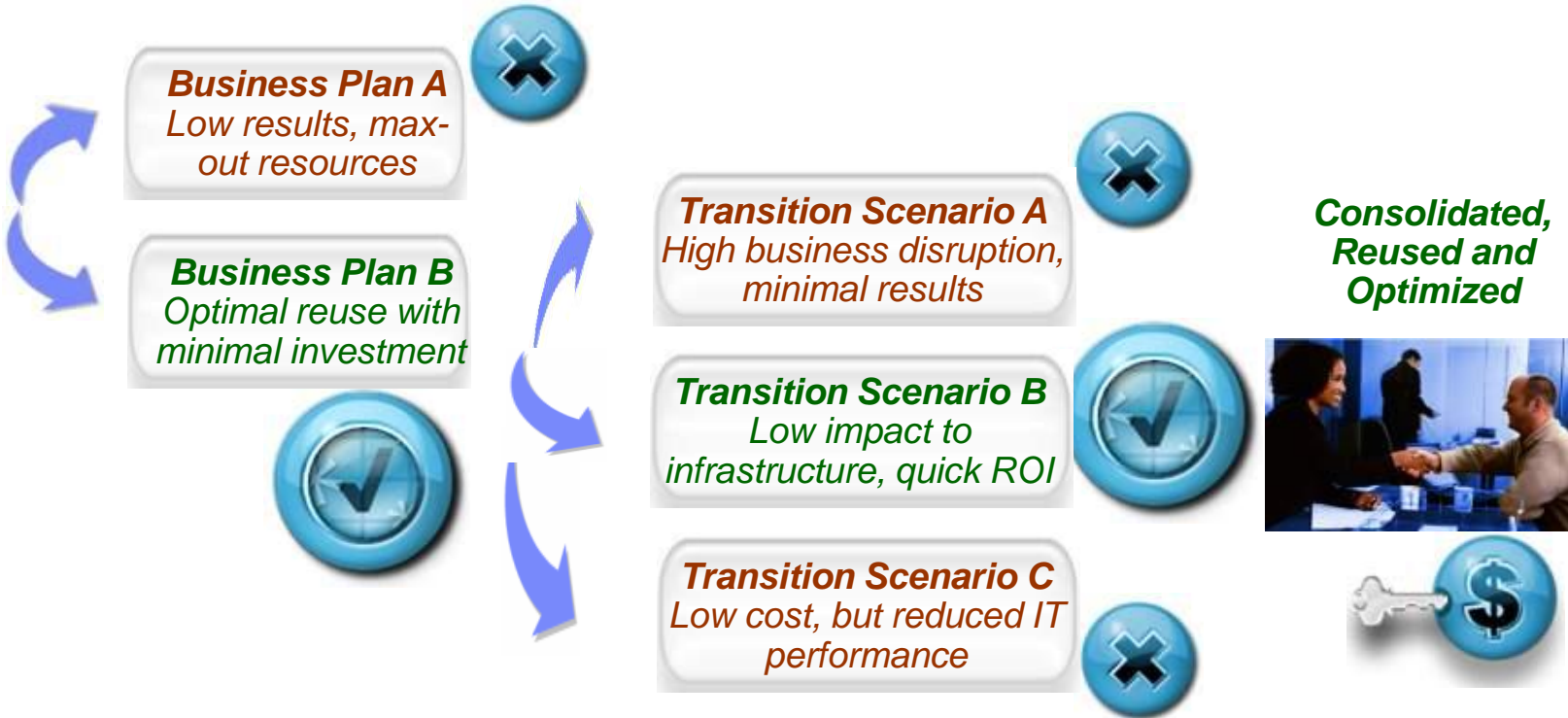
Group information for more accurate planning

Unique folders & workspaces for current- and future-state analysis

Example consolidation exercise



Company A
Redundant,
Inefficient, High
Cost

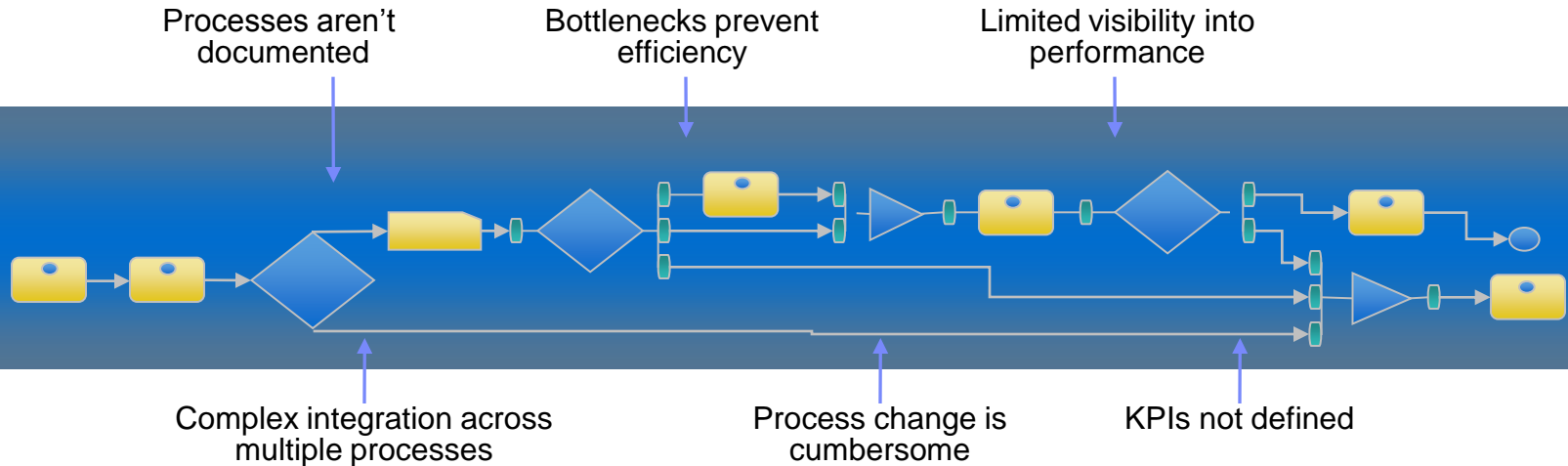


- Mergers
- Acquisitions
- Consolidation
- Cost-Cutting

- Divestures
- Outsourcing

Business Process Modeling and Analysis

BPA solves common business challenges . . .



Integration Modeling Monitoring

Software

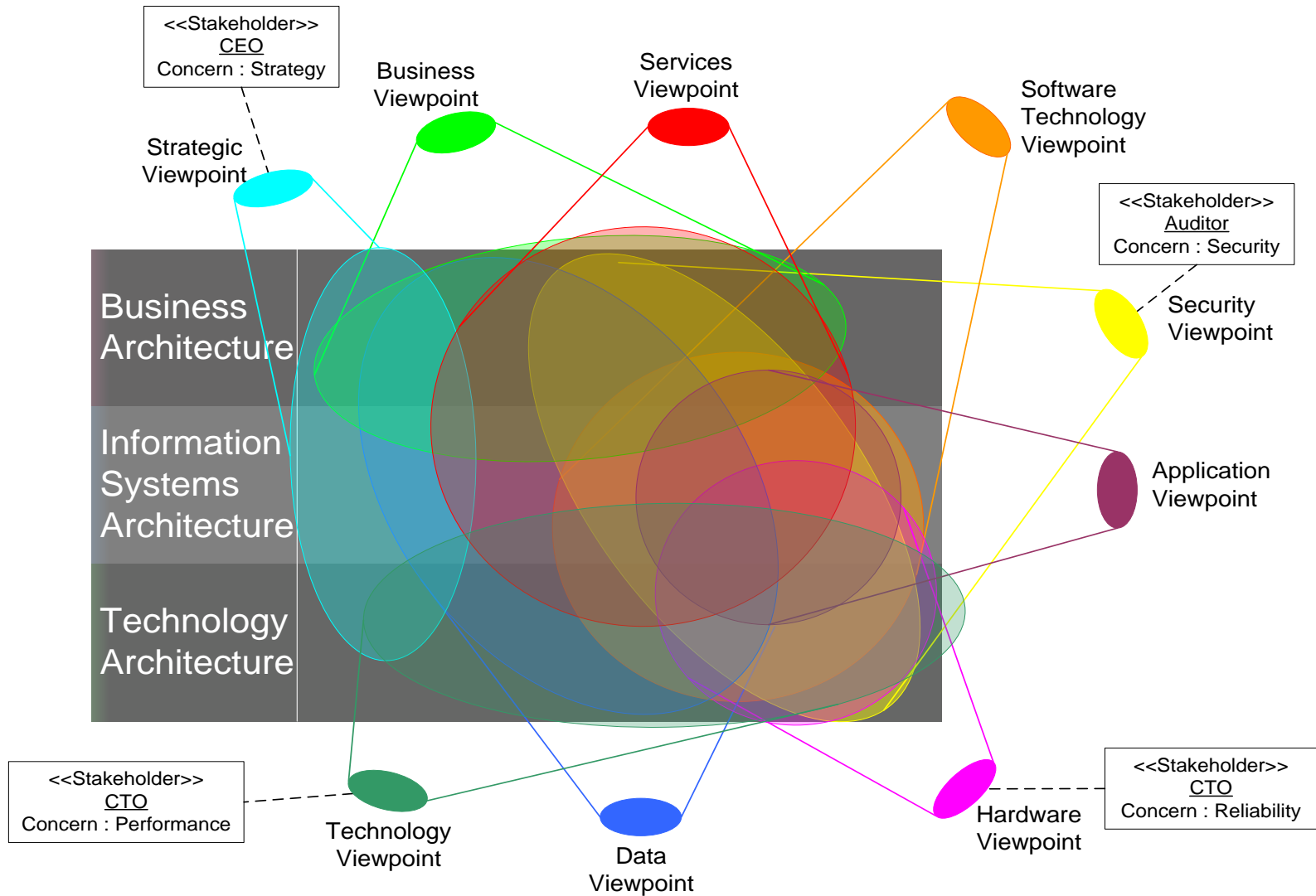
Forms Rules Engine Workflow

Models Process Knowledge Metrics

Expertise and Assets

Policies Business Logic Methodology

Multiple views to all the Stakeholders



Enterprise Architecture Values

- Establish governance by assuring IT investments and projects are always aligned with business strategy
- Create an agile organization, that can quickly adapt to change, by staying a step ahead of business challenges (compliance, competition, shifting market trends etc)
- Establish a “Blueprint” of your Enterprise to be provide/reveal & manage information necessary for streamlining decision-making
- Plan & Maximize projects of solution implementation and demonstrate ROI in manageable segments
- Leverage EA to set a successful Business (e.g. Strategy Maps) & IT direction (e.g. Technology Roadmap)
- Reach out to the extended teams to maintain consistent information which are up to date, supported and sustained over time

Thank
You

