



Create An Exceptional Multi-Channel Web Experience Using IBM Rational Application Developer for WebSphere Portal

Manish Aneja
Team Lead, RAD Portal Toolkit
mananeja@in.ibm.com

Gaurav Bhattacharjee
Technical Lead, RAD Portal Toolkit
gaurav.bhattacharjee@in.ibm.com

IBM Software

Innovate2011

The Premier Event for Software and Systems Innovation



Please Note:

IBM's statements regarding its plans, directions, and intent are subject to change or withdrawal at IBM's sole discretion. Information regarding potential future products is intended to outline our general product direction and it should not be relied on in making a purchasing decision.

The information mentioned regarding potential future products is not a commitment, promise, or legal obligation to deliver any material, code or functionality. Information about potential future products may not be incorporated into any contract. The development, release, and timing of any future features or functionality described for our products remains at our sole discretion.



Agenda

Exceptional Web Experience Overview

Rational Application Developer Overview

Rational Application Developer Portal Tool Kit Overview

Demonstration of Rational Application Developer Portal Tool Kit

Question and Answer Session



Agenda



Rational Application Developer Overview

Rational Application Developer Portal Tool Kit Overview

Demonstration of Rational Application Developer Portal Tool Kit

Question and Answer Session



An Exceptional Web Experience...

Generates strong customer loyalty



Has a wow factor



Is adaptable to changing markets



First Impression of your business lends credibility

All built on a technology foundation you can trust

Our customers are telling us they need to...



Build brand, revenue, and customer satisfaction using online properties



Drive higher value customer interactions via lower cost channels




Increase business responsiveness by consolidating sites



IT business analyst



VP of customer support



Public Information Officer (Government)



IT Director of web architecture



VP of online sales



VP of Direct-to-consumer Marketing (Insurance)



Director of online marketing



Creative agency



Chief Medical Informatics Officer (Healthcare)



IBM Project Northstar

Leading the way in exceptional customer experiences

Vision about the “art of the possible” for engaging Customers on the web.

Multi-year IBM strategy to deliver the capabilities for our customer to excel at customer-facing experiences.

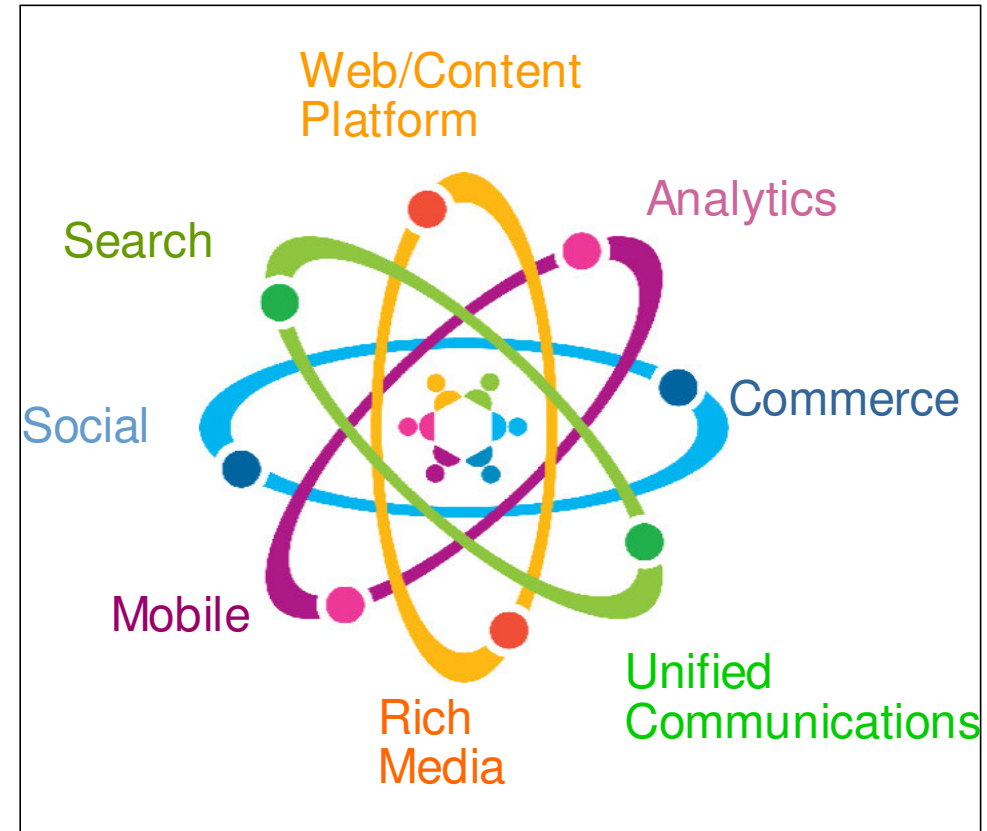
Context is key. The best Web experiences make all users feel like the experience was custom fit for them – based upon their preferences, device, location, social networks, and behaviors.

Social is everywhere and everywhere is social. Organizations hoping to meaningfully interact with, and listen to, customers must transform their online experience beyond one-way information sharing or “brochure sites”. A more socially-infused experience is now expected, one that supports true dialogue with, and between, customers.

Web Experiences can be both visually pleasing and flexible. You don't need to sacrifice scalability, flexibility, and manageability to create a graphical, persuasive, and responsive web experience.

Integration must be easy. To create a truly interactive, context-aware Web experience, you must be able to easily leverage and extend existing data sources like CRM systems, social media sites, and back-end applications, as well as other product or cloud-based service you acquire in the future.

Proper measurement can lead to competitive advantage. At a tactical level, analytics are key to determining if you are meeting your business objectives and properly engaging customers. At a more strategic level, analytics are also fundamental to gathering enough information about your customers to truly understand them, making it possible to deliver user-optimized Web experiences that deliver more to your bottom line.



People are at the center of an exceptional experience; Capabilities are employed as necessary to help achieve experiences that meet/exceed the expectations of the intended user(s)

WebSphere Portal: Key value propositions and capabilities

User Expectation & Appeal

Integration of Web 2.0 features for a richer, more responsive, and modern user interface

Full **personalization of user experience**

Recommendation engine for **cross-selling and customer monitoring**

Multi language, disability access

Universal access (PCs, Mobile phones, TV) for new entry points to service and access

Speed to Market & Reduced Costs

Component based model for **faster development, re-use, and cost effective deployment**

Parallel development of service and application components

Shared 'plumbing' code so more time **spend creating business function not reinventing**

Powerful customization capabilities to change look & feel of website **without coding**

Flexibility & Agility

Flexible **integration of 3rd party content and applications**

Give **LOB and business users control over their website content and processes**

while maintaining IT control over standards and best practices

Separation of content from presentation

Increased **content re-use and reconfiguration** vs hard coding

Easy integration of web content management and On-line Forms capabilities

Support for **leading portal standards** to maximize **reuse and investment protection**

Performance & Scalability

A set of **best practices on building web platforms**, developed and **refined over 6 years** by

industry leading portal platform vendor

Proven to **scale for large numbers** of customers and users

Extendable to other enterprise portal environments

Agenda

Exceptional Web Experience Overview

Rational Application Developer Portal Tool Kit Overview

Demonstration of Rational Application Developer Portal Tool Kit

Question and Answer Session



Business challenges to the effective delivery of software

A history of cost overruns, schedule slips and quality issues



We need to deliver new and custom applications faster



Cost of development is rising but budgets are declining



Too many re-writes and failed launches



Overwhelming application complexity



Time wasted integrating piecemeal, multi-vendor solutions



Too many problems late in the cycle getting to production



Hard to stay current on new technologies.

Rational Application Developer for WebSphere Software

Streamlined development for WebSphere Application Server and WebSphere Portal

Optimized for WebSphere

Complete Support

Leverage your investment with the award winning tools built for WebSphere runtime

Increase Productivity

Speed & Agility

Eliminate mundane tasks to allow developers to be innovative
Shorten the learning curve

Improve Quality

High Quality

Find and fix problems early in the development cycle

Built on Eclipse

Extensibility

Provide unique capability on top of a flexible and extensible platform

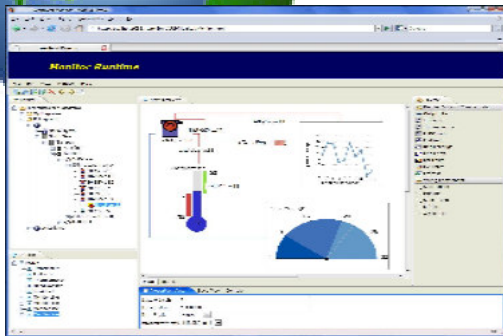
Mission Critical Ready

Reliability

Award winning! – 2009 Evans Data Users Choice: Software Development
24 X 7 / 5 + 3 years of support

Customers use RAD to build Enterprise Java IT applications

1st Tier



Web Clients

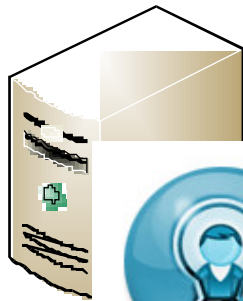
JavaScript

JSF

Portal Client

Rich Java GUI Client

2nd Tier



REST style Services

Web Services

SCA

EJB
JPA
POJO

WebSphere Portal

InfoSphere MashupHub

Tomcat

JBoss

3rd Tier



IBM CICS Transaction Server



IBM InfoSphere DB2

Oracle



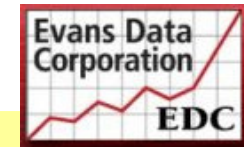
IBM InfoSphere IMS

SAP
PeopleSoft

...

RAD accelerates SOA, Java EE, Web 2.0 and Portal development

Evans Data IDE User Choice Award



Web 2.0

Extend SOA and Java EE assets to the glass via dynamic, rich JSF and DOJO applications



Team Collaboration

Rational Team Concert: Collaborate, Problem Determination

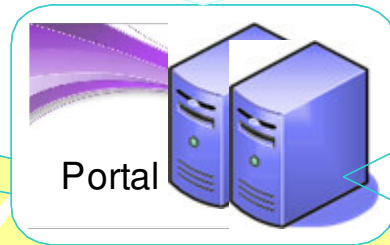


SOA
Assemble Web services and SCA components into heterogeneous business applications



Quick Fix
Validate
Refactor
Annotate
Refine

Visualize
Analyze
Deploy
Test
Debug

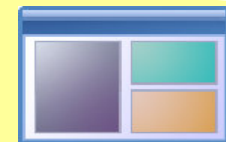


Smart Phone Applications

Build and test smart phone applications
www.blackberry.com/developers/ibmrad

Portal

Visually design portal sites and portlets for WebSphere Portal Server



Java EE 6 and OSGi

Develop, test and componentize Java EE 6 applications with annotation based programming



Agenda

Exceptional Web Experience Overview

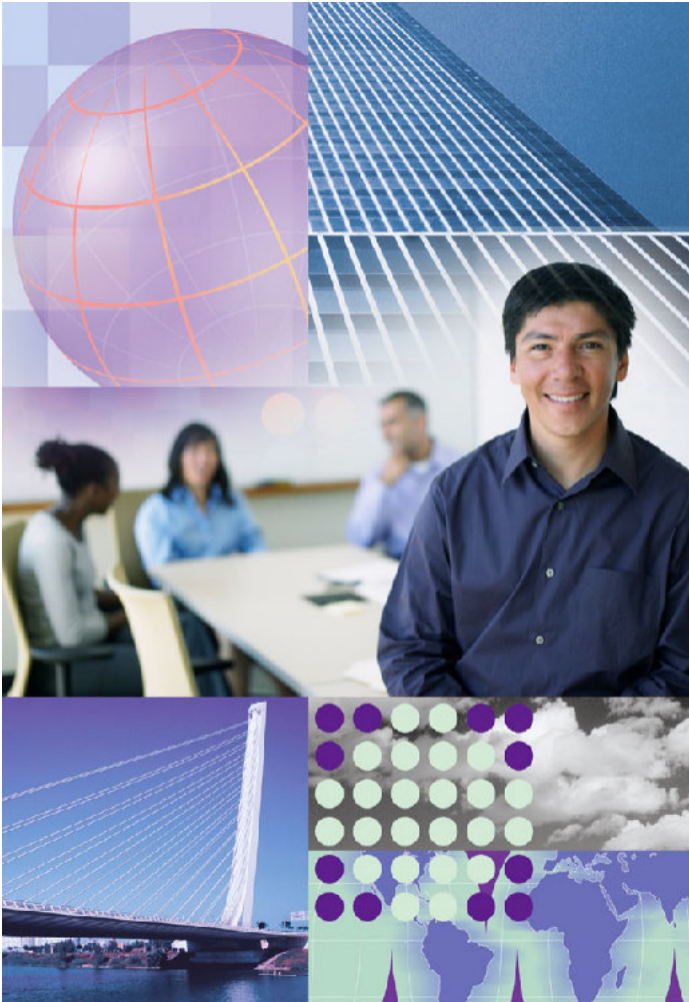
Rational Application Developer Overview

Demonstration of Rational Application Developer Portal Tool Kit

Question and Answer Session



Increase Productivity



Eliminating mundane tasks through wizards, visual development, and editors that provide assistance as you develop

Suggest ways to complete the code you're writing, look up APIs for what you've typed, validate your code as you type, suggest solutions to errors in the code

Improve application understanding through Code Visualization.

Help resolve the: "I just inherited this code, and I have no idea what it does"

Support developers adopting agile and iterative development styles

Design, code and test incremental parts of the application.

Help manage changes you need to make.

Make new technologies easier to learn, and faster to implement, with less bugs.



RAD Portal Toolkit V8.0.x: At a glance

Support for WebSphere Portal V 7

CSA2 or pagebuilder theme support

Developer Experience Enhancements

PTK Usability Improvements

Portal run-time segregation for WAS/WID

JSF Best Practices & Performance study

JSF 1.2 support

JPA enabled portlets

JAX-WS for Portal V7

Eclipse 3.6

Upgrade in place

Clean Install

Additional Enhancements to PTK Web 2.0 Features

Cloud support

Multi-channel device development

PTK - Portal Dojo Library (dijit support)

Easily build compelling, highly interactive portlets

Create client-side charts and graphics

PTK - iWidget Support (v1.1, v2.0)

Creation wizard

Consume iWidgets and static pages in portal

Publish iWidgets and Pages to Portal

Test using Mashup enabler v2.0

PTK – Portal Site Designer Tool

Manage layout and content of your Portal site from within RAD

Faster than ever preview of Portlets and iWidgets



Optional and Flexible Installation of Portal Stubs



Install only the Portal version that's required;

No need to install Portal Stub if Portal server is installed on the local machine

Advantage: reduced hard disk footprint (**by ~38%**)

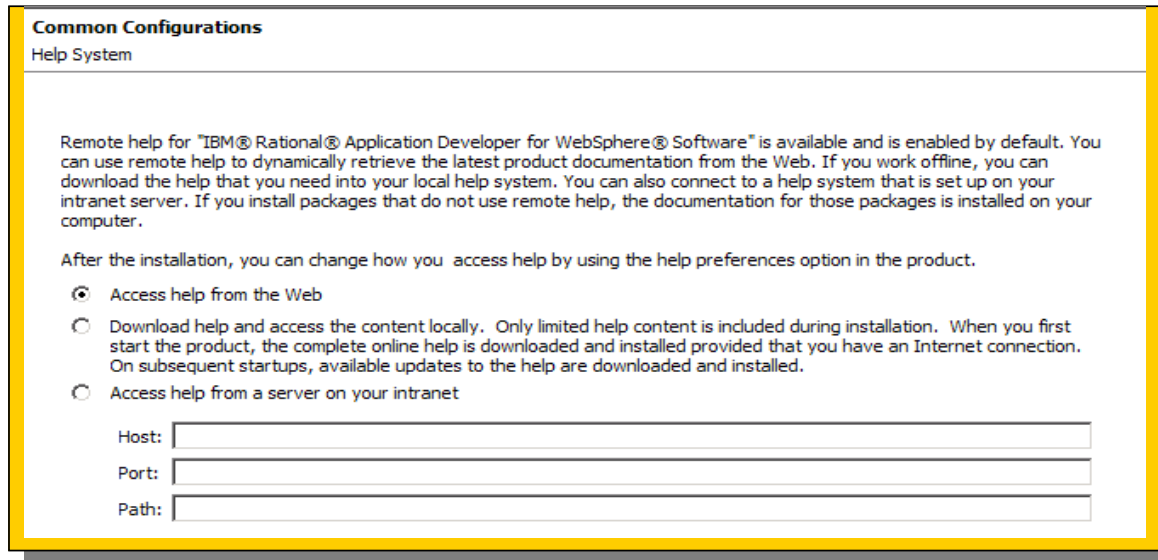
Ability to shell share with other Eclipse based products which helps developers manage the life cycle of their applications on their desktop

Download & footprint improvements for the WebSphere test environment

Enterprise install capabilities for simple maintenance and provisioning of your own standardized install configurations.

Create response files for what install configuration you need.

Building Skills Quickly – Wide Range of Help



Various install options to manage your desktop configuration better

Can be installed on a Enterprise wide common infrastructure

Advantage:

Available on internet – regular updates

And even more reduced hard disk footprint

Tutorials

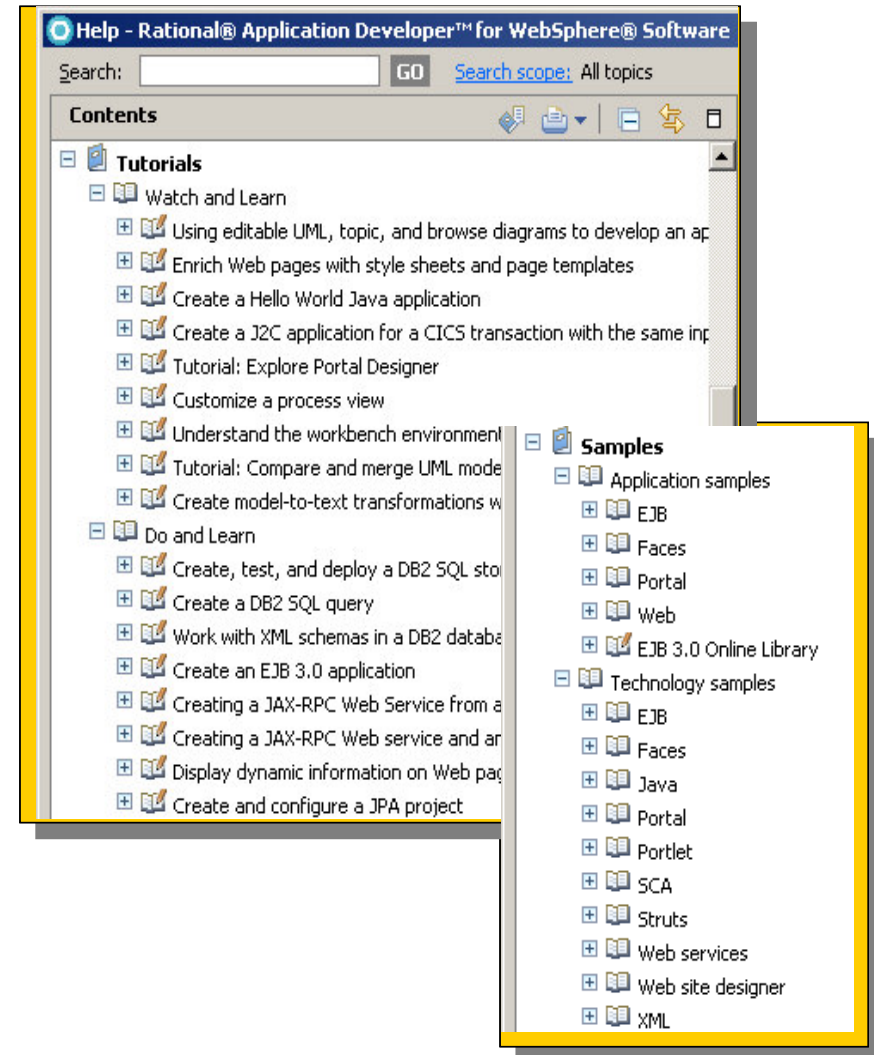
Watch & Learn

Do & Learn

Samples

Application Samples

Technology Samples



Portal Toolkit: an end-to-end Integrated Development Environment

The screenshot displays the Portal Toolkit IDE interface, which is an end-to-end integrated development environment. It is divided into several key sections:

- Enterprise Explorer (Left):** Shows a project tree for 'BoxOfficeProject'. The 'Workspace' area is annotated with **Explore**.
- Code Editor (Top Center):** Displays Java code for a service implementation:


```
@Service (Banking.class)
public class BankingImpl implements Banking {
    @Reference
    public ChequingAccount chequingAccount;

    @Reference
    public SavingsAccount savingsAccount;
}
```

 The word **Implement** is circled in yellow.
- Deployable Composites (Middle Left):** Shows a list of composites, including 'http://temp' and 'Bank'. The word **Package** is circled in yellow.
- Wizards (Bottom Left):** Offers options to create a 'Portal', 'Portal Project', or 'Portlet Project'. The word **Create** is circled in yellow.
- Service Component Architecture (Bottom Left):** Includes 'Validation Rules' and tabs for 'Assembly Model', 'WSDL', 'Java', and 'WebSphere'. The word **Configure** is circled in yellow.
- Add and Remove Projects (Middle Right):** A dialog box for managing projects on the server. The words **Run** and **Debug** are circled in yellow.
- Administration Console (Right):** Shows the 'WebSphere Portal Administration' interface. The word **Manage** is circled in yellow.

WebSphere Portal Server 7 Support

WP 7 Server Support

Updated Wizard Steps

Ability to test connection with credentials

Updates to Server configuration editor to help manage deployment option local to Rational Application Developer

Portlet Settings

Publishing options

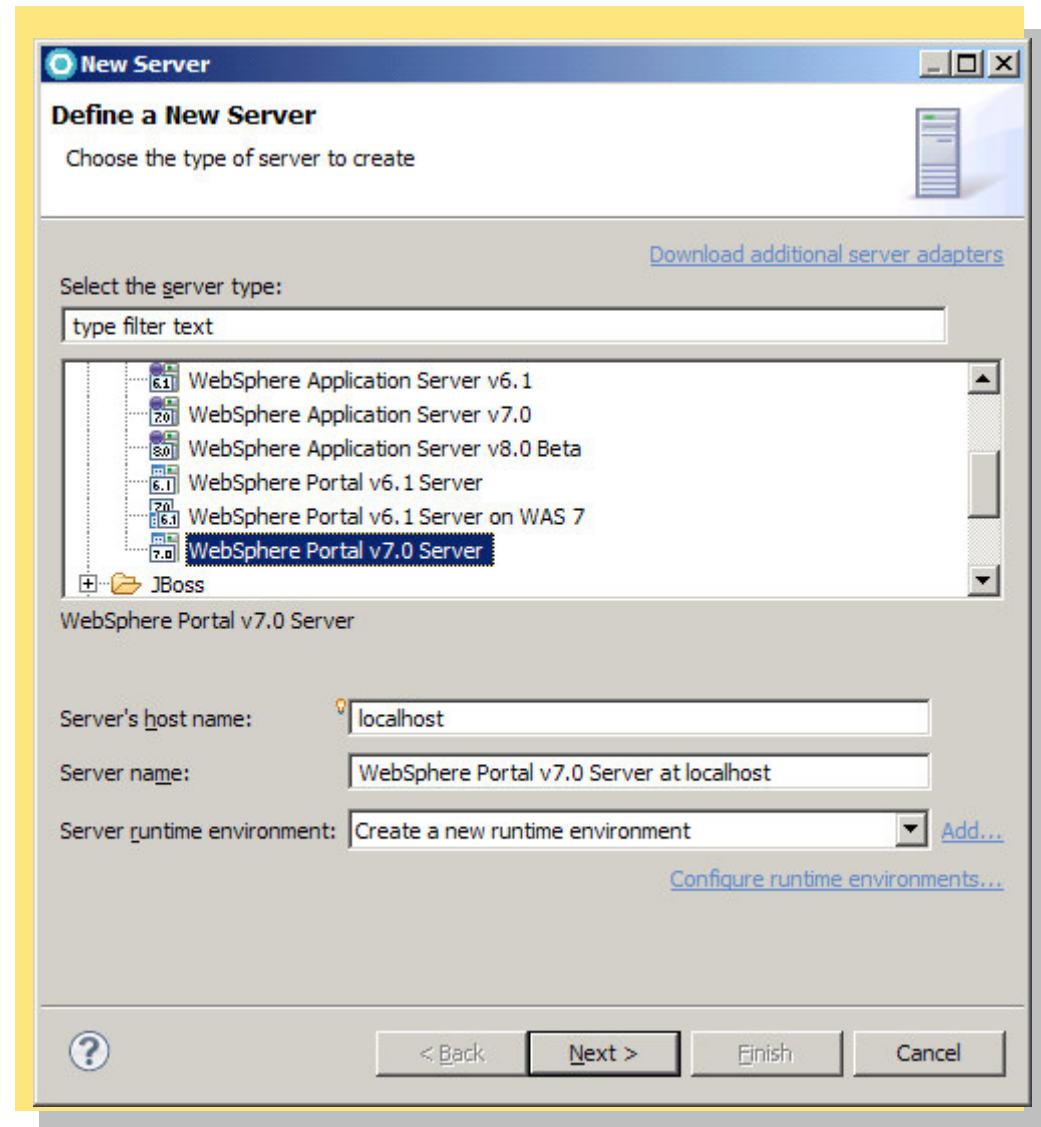
WP V7 Stubs Support

contain all jars necessary for compilation of a JSR286, JAX-WS, and other portal features portal/portlet project

Workspace migration from Rational Application Developer v6.1, v7 and v7.5.x to v8

Incremental publish saves deployment time by an average of 80%

Integrated debugging, menu items for admin console, ability to launch WSADMIN, application client launcher



WebSphere Portal 7.0 and Client Side Aggregation 2.0 Support

RAD 8.0.1 supports WebSphere Portal
7.0*

as a new target runtime
Full feature support including
CSA 2.0
Portlet and iWidgets can now
be placed on same portal page

Portlet Publishing

Page Creation Settings
Settings for Page Creation Section

Publishing

Create pages

Label title: Rational Components

Label ordinal: first

Use separate page for each project

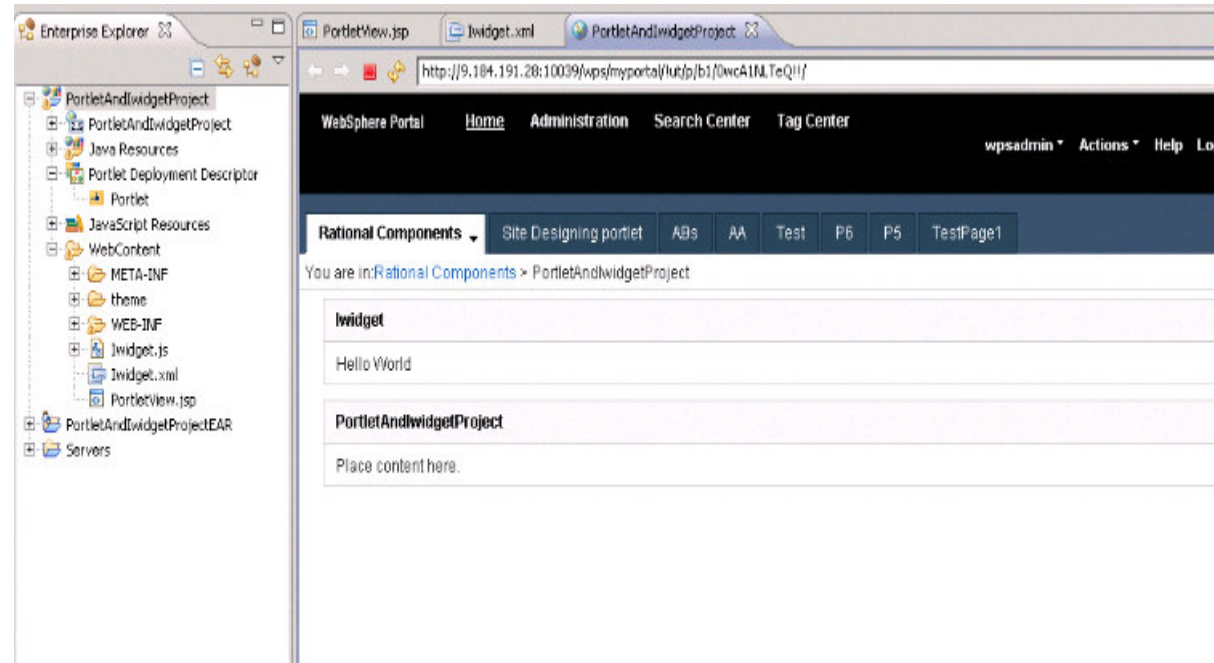
Select page type

Select the Artifact: iWidget

Inherit Parent's Mode

CSA Mode

SSA Mode



* RAD 8.0 supports WebSphere Portal Beta which was publicly available at RAD 8.0 eGA



WebSphere Test Environment support

Publishing to WebSphere Portal

Support for exporting and publishing to WebSphere Portal

Support for hot deploy

Ability for WebSphere Portal to recognize a change to the archive file and automatically update the server

Server Tuning Options

Be aware of the different server options

Can also run the server on a different machine

WebSphere Portal Settings

Portal Settings
Edit the WebSphere Portal settings.

Context root: /wps
 Default home: /portal
 Personalized home: /myportal
 Install location: C:\IBM\WebSphere\Portal7\EGA\Fur...alServer
 For example, C:\Program Files\WebSphere\PortalServer or /opt/webSphere/portalserver.

WebSphere Portal Administrator

User ID: wpsadmin
 Password: *****

Enable automatic login

User ID: wpsadmin
 Password: *****

Portlet Publishing
Publishing settings for portlet projects

Pre-Publishing

Remove previously run portlets
 Reset Portal

Publishing

Deploy portlet project
 Enable anonymous user access

Post-Publishing

Send user defined XML Access script
 Enter the script to run

Page Creation Settings
Settings for Page Creation Section

Publishing

Create pages

Page title: Rational Components
 Page ordinal: first

Use separate page for each project

Select page type

Select the Artifact: Portlet

Inherit Parent's Mode
 CSA Mode
 SSA Mode

WebSphere Application Server vNext support

WAS vNext Server Support

Updated Wizard Steps

Ability to test connection with credentials

Updates to Server configuration editor to help manage deployment option local to Rational Application Developer

Portlet Settings

Publishing options

Workspace migration from Rational Application Developer v6.1, v7 and v7.5.x to v8

Incremental publish saves deployment time by an average of 80%

Integrated debugging, menu items for admin console, ability launch WSADMIN, application client launcher

New Portlet Project

Portlet Project
Specify a name and location for the new portlet project.

Project name:

Project location
 Use default location
 Location:

Target runtime

EAR membership
 Add project to an EAR
 EAR project name:

Portlet settings
 Create a portlet
 Portlet name:

Configuration: JSR 168 Empty

&Web 2.0 features: Not supported on this runtime

Devices supported: Not supported for the selected portlet type

Enhanced Performance Optimization for Development

`ConfigEngine.bat enable-develop-mode-startup-performance`

For development purpose

Reduces portal start up time

JVM is optimized for development

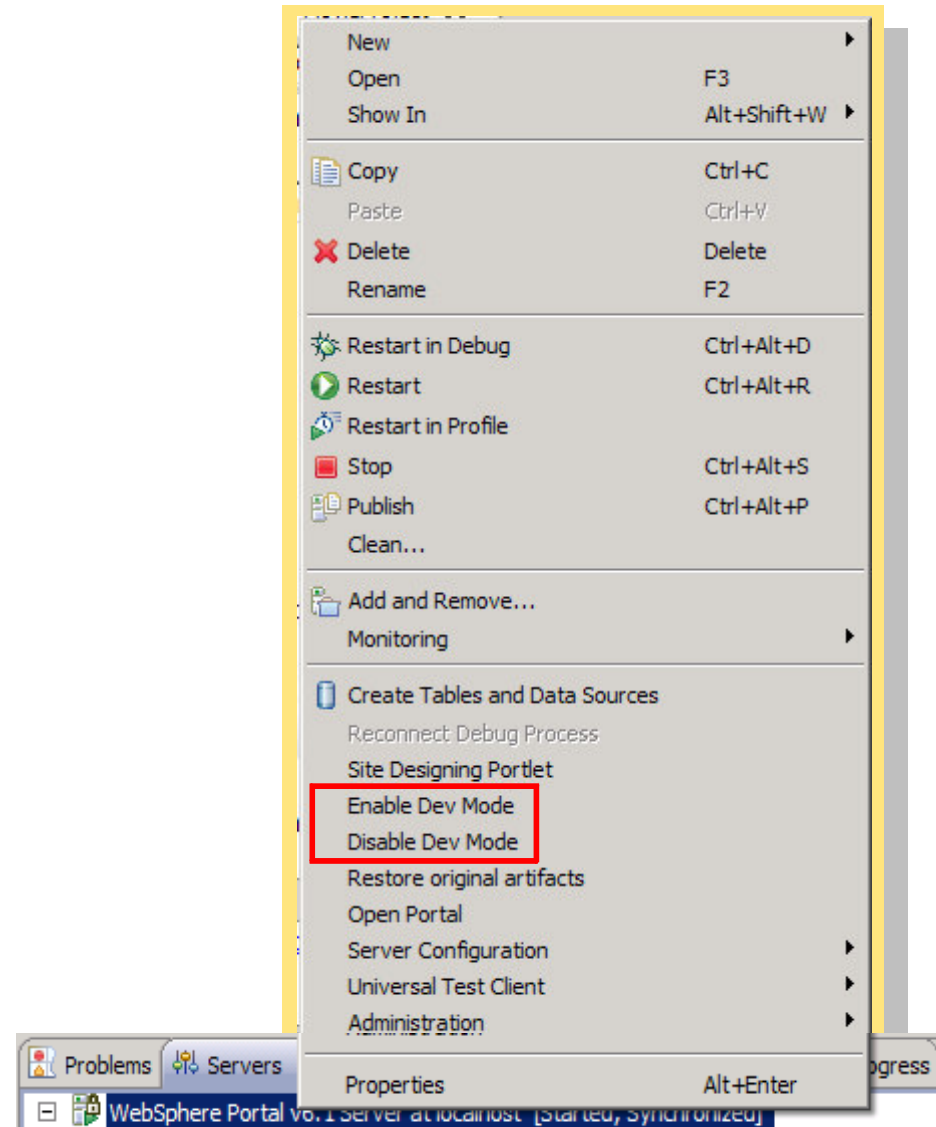
One click

Activation

Deactivation

No need to remember various portal config params

Less chance of human error



Cloud Computing Support

Reduced Cost; self service provisioning

On Demand Provisioning; accelerated development

Reduced Storage; on local infrastructure

Highly Automated; centrally managed

Ready to use; no need for installation

In built support of IBM Smart Cloud

Directly publish to a WebSphere

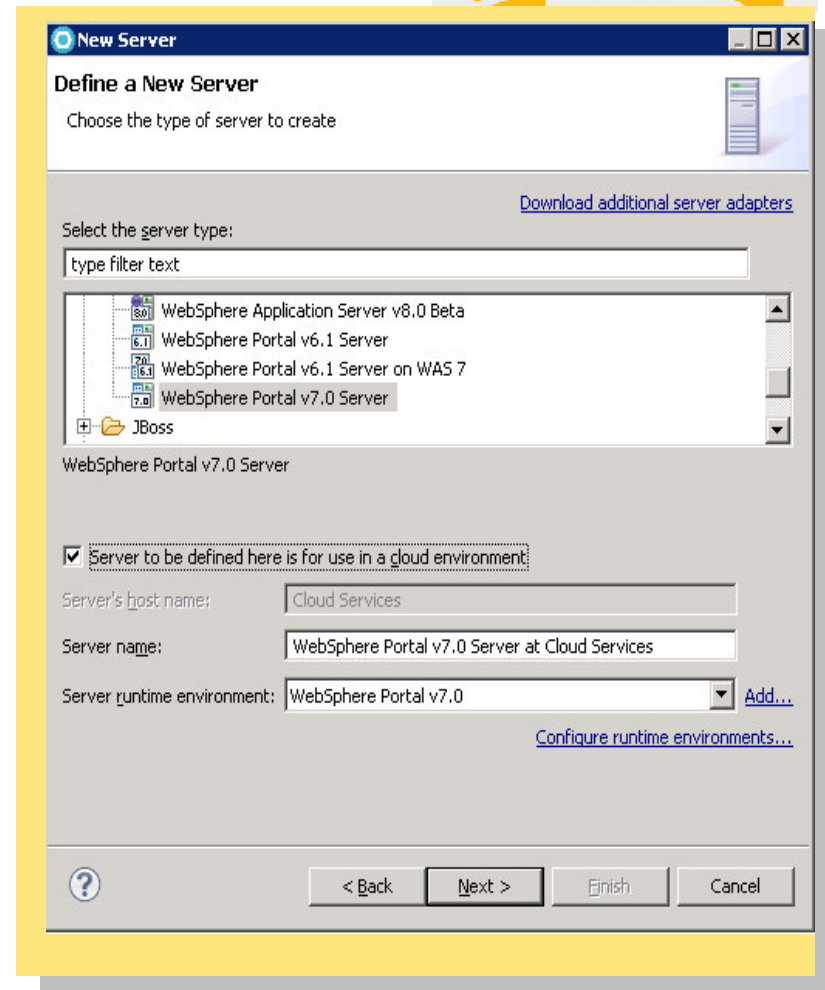
Portal instance hosted on cloud

IBM Smart Business

Development & Test



IBM offers choices to deploy workloads that matter to you for greater efficiency, productivity and control.



Multi-channel device development

Enhanced portlet project creation wizard, that allows device support

Direct publishing on portal, that can be tested on smart phone device simulator as well

Developers can leverage RAD tools to create JEE based web apps, and target them for different devices

Deal Id	Status	Next Step
11	YET TO START	Contact their Chief Sugar officer
12	ONGOING	FINALIZE THE DEAL
13	CLOSED	FEEDBACK MAIL
14	YET TO START	INTRODUCTORY MAIL
15	ON GONG	FINALIZE DEAL

Active Site Analytics

New Portlet Project

Portlet Project
Specify a name and location for the new portlet project.

Project name: ShoppingCart

Project location
 Use default location
Location: C:\Site Analysis\Portlet Actions\ShoppingCart Browse...

Target runtime
WebSphere Portal v7.0 New Runtime...

EAR membership
 Add project to an EAR
EAR project name: ShoppingCartEAR New Project...

Portlet settings
 Create a portlet
Portlet name: ShoppingCart
Configuration: JSR168 Basic Modify...
Web 2.0 Features: Client-side capabilities **Modify...**
Devices supported: None Modify...
Manage Features...

< Back Next > Finish Cancel

Markup is generated for every asa enabled screen without explicitly specifying what the name of the tag and value of the tag is.

Select the Active site analytics checkbox to enable ASA support for this project

Modify Portlet Project Web 2.0 Features

Web 2.0 Features
Specify Web 2.0 features to be installed in the new portlet project

Active Site Analytics
 Ajax proxy
 Client-side capabilities
 Dojo toolkit
 RPC adapter

OK Cancel

Active Site Analytics - modification to the resource bundle and portlet JSP

ASA Portlet Screen metadata is added to every auto generated portlet modes jsp if ASA is enabled for the project.

Bundle lookup code is auto generated to read the JSP title from the resource bundles depending on locale.

The jsp filenames are used as the default values for ASA Screen title tags.

Unique ASA Screen ID `asa.portlet.screen.id` is auto-generated by tooling for every auto generated portlet modes jsp.

```
# Default Resource Bundle
#
# filename: ShoppingCartPortletResource.properties
# Portlet Info resource bundle example
javax.portlet.title=ShoppingCart
javax.portlet.short-title=ShoppingCart
javax.portlet.keywords=ShoppingCart

# ASA : Title for the JSP file to be rendered on the view mode
asa.portlet.screen.ShoppingCartPortletView.title=ShoppingCartPortletView
# ASA : Title for the JSP file to be rendered on the edit mode
asa.portlet.screen.ShoppingCartPortletEdit.title=ShoppingCartPortletEdit
# ASA: Title for the JSP file to be rendered on the help mode
asa.portlet.screen.ShoppingCartPortletHelp.title=ShoppingCartPortletHelp
# ASA: Title for the JSP file to be rendered on the configure mode
asa.portlet.screen.ShoppingCartPortletConfig.title=ShoppingCartPortletConfig
# ASA: Title for the JSP file to be rendered on the edit defaults mode
asa.portlet.screen.ShoppingCartPortletEditDefaults.title = ShoppingCartPortletEditDefaults
```

Active Site Analytics – Instrument ASA tags at portlet level

Markup is generated for every ASA enabled screen without explicitly specifying what the name of the tag and value of the tag is.

Select the Active site analytics checkbox to enable ASA support for this portlet.

New Portlet

Portlet

Select a portlet project for the new portlet.

Project: ShoppingCart

Portlet name: OrderAndShipping

Portlet API: JSR 168 Portlet

Standard portlet API according to the Java Portlet Specification Version

Portlet type: Basic Portlet

Create a portlet that extends the GenericPortlet class defined in the Java Portlet Specification Version 1.0 (JSR 168). You will be asked to selected several options for generating sample code.

Portlet Features

Web 2.0 Features: Client-side capabilities **Modify...**

Devices supported: None **Modify...**

< Back Next > Finish Cancel

Modify Portlet Project Web 2.0 Features

Web 2.0 Features

Specify Web 2.0 features to be installed in the new portlet project

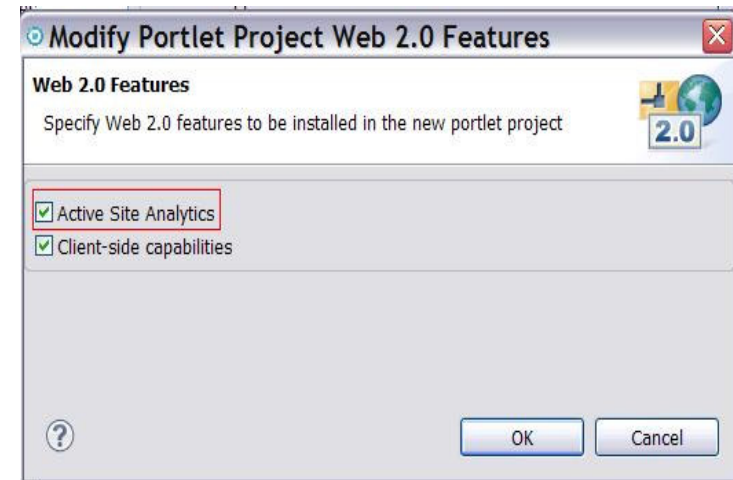
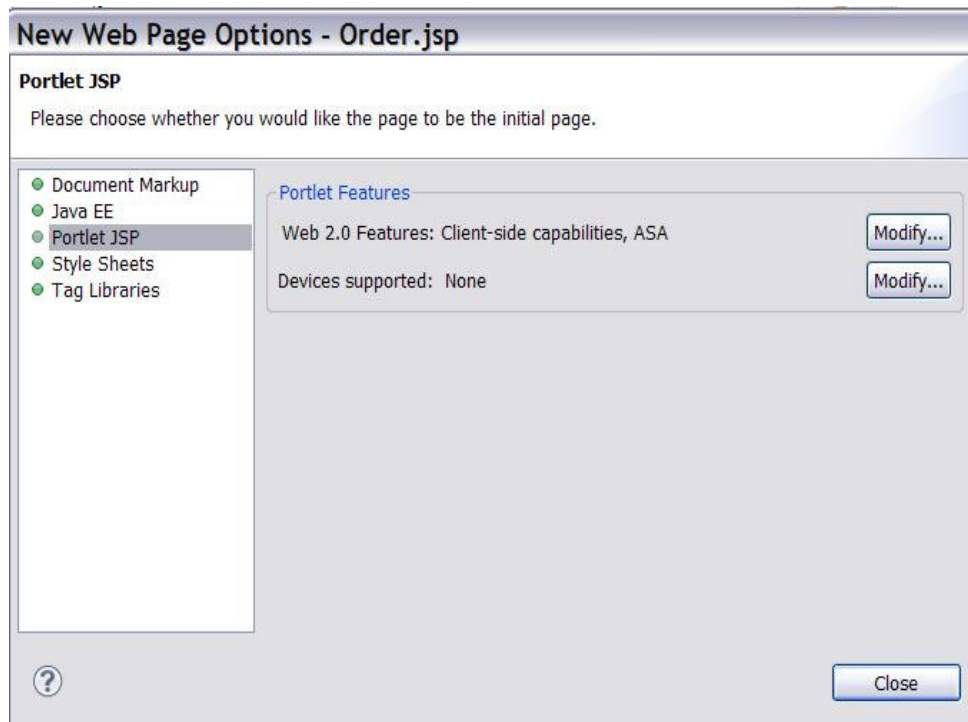
Active Site Analytics

Client-side capabilities

OK Cancel

Active Site Analytics – Instrument ASA tags at portlet screen level

Select the Active site analytics checkbox to enable ASA support for this portlet jsp.

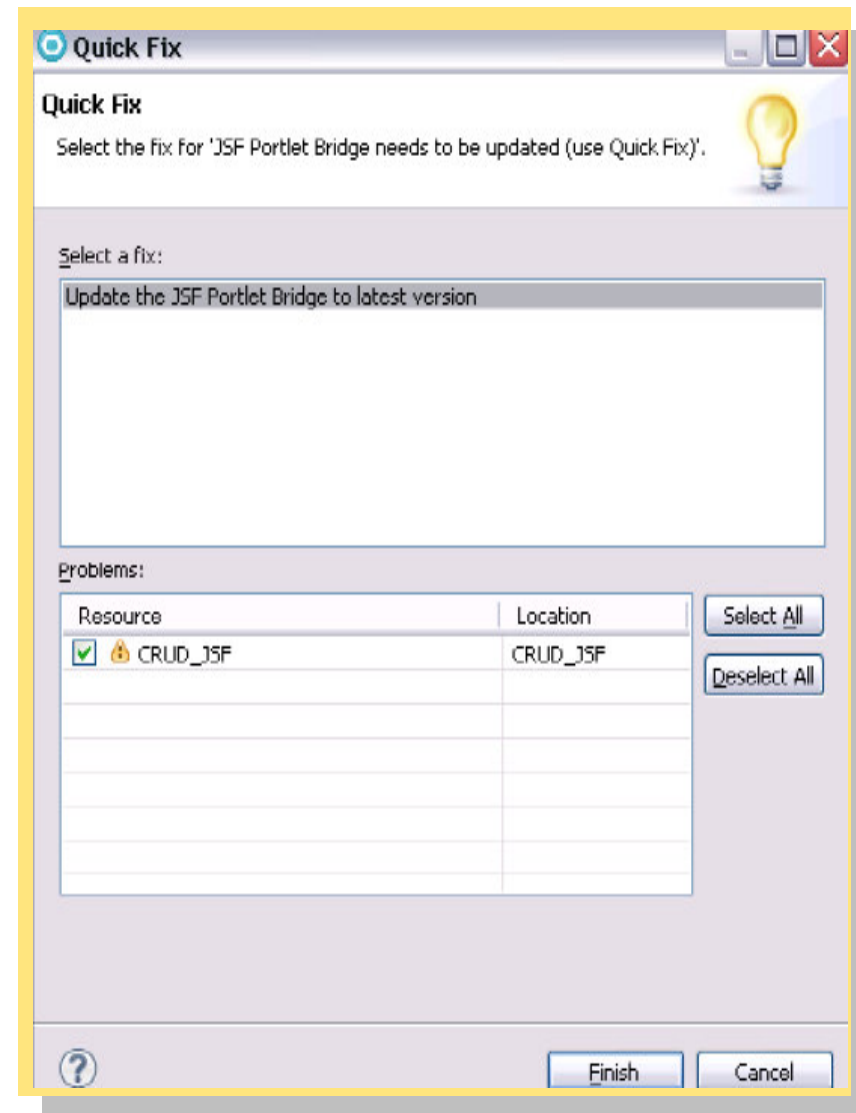


JSF Portlet Bridge improvements

The IBM JSF portlet bridge supports JSR 168 Faces Portlet applications based on JSF 1.2

Automatic update of the JSF portlet bridge when a JSF Portlet Project is migrated from IBM Rational Application Developer V7.0.0.x to RAD V8

In case of migration of JSF Portlet projects from IBM Rational Application Developer V7.5.x to RAD V8 quick fix option to update the JSF portlet bridge.



JSF 1.2 Support

IBM JSF Portlet Bridge is enhanced
for JSF 1.2 specification

RAD Portal Tools allow integration of
third party JSF bridges*

New Portlet Project

Portlet Project

Specify a name and location for the new portlet project.

Project name: TPJSFBridge

Project location

Use default location

Location: D:\WorkArea\RAD 802_defectverification11\TPJSFBridge

Target runtime

WebSphere Portal v7.0 stub

EAR membership

Add project to an EAR

EAR project name: TPJSFBridgeEAR

Portlet settings

Create a portlet

Portlet name: TPJSFBridge

Configuration: JSR 168 Faces using IBM Bridge

Web 2.0 Features: Client-side capabilities

Devices supported: None

Manage Features...

< Back Next > Finish Cancel

* third party bridge is considered as application code

Improved Portlet project Creation Wizard

Hassle free feature selection

New Portlet Project

Portlet Project

Specify a name and location for the new portlet project.

Project name: PEC2010

Project location

Use default location

Location: D:\WorkArea\RADS_Beta_wspace\PEC2010

Target runtime

WebSphere Portal v7.0 stub

EAR membership

Add project to an EAR

EAR project name: PEC2010EAR

Portlet settings

Create a portlet

Portlet name: PEC2010

Configuration: JSR.286 Faces

Web 2.0 Features: Client-side capabilities

Manage Features...

< Back Next > Finish Cancel

Modify Portlet Project Configuration

Portlet Project Configuration

Specify configuration for the new portlet project

Portlet API: JSR 286 Portlet

Standard portlet API according to the Java Portlet Specification Version 2.0 (JSR 286).

Portlet type: Faces Portlet

Create a portlet that uses the JavaServer Faces Portlet Framework (JSR 286).

OK Cancel

Modify Portlet Project Web 2.0 Features

Web 2.0 Features

Specify Web 2.0 features to be installed in the new portlet project

Ajax proxy

Client-side capabilities

Dojo toolkit

RPC adapter

OK Cancel



Site Designing Portlet Tool – Desktop application like experience

Light Weight

Desktop like compelling
usage

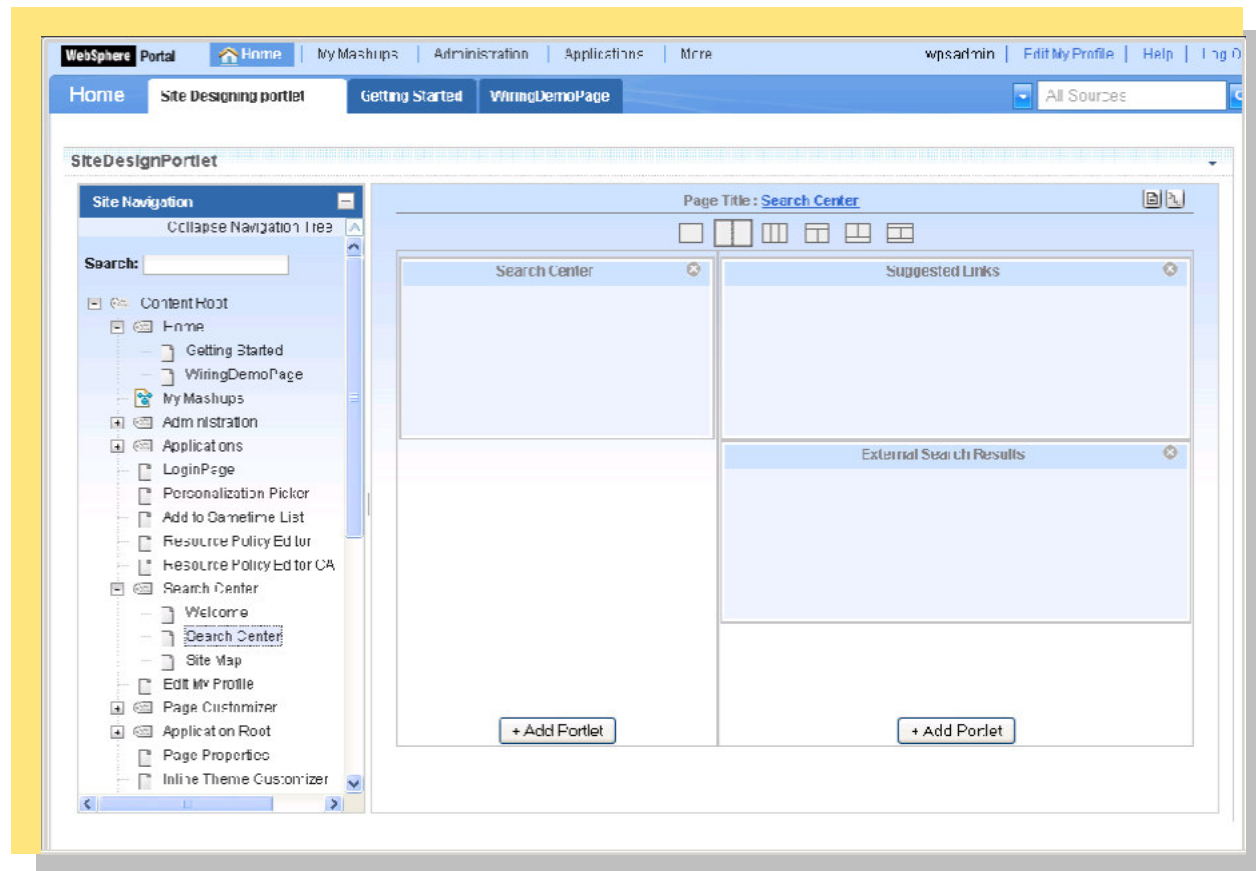
Web2.0 Ajaxified interface

Universal Catalog

Portlet Design View

Page Navigation

Site Designing



JPA Support for Portlet Projects

Wizards to create

- Entities from DB
- JPA Manager Bean
- Query Method

Page Data View

- Tree structure to represent the Entity
- Auto generation of UI elements

Create and automatically initialize mappings:

Top-down: Create new database tables from existing entity beans.

Bottom-up: Create new entity beans from existing database tables.

Meet-in-the-middle: Define mappings between existing database tables and entity beans.

The screenshot displays three Eclipse IDE windows related to JPA configuration:

- Generate Entities Wizard:** Shows the "Generate Entities from Tables" step. The "Generate Entities" button is circled in yellow. A table lists database tables and their corresponding entity names.
- Edit Query Method:** Shows the "Filter Results" button circled in yellow. It displays a table of attributes to be returned by the query.
- Page Data View:** Shows a tree structure under "JPA Manager Beans" with the "Browse Entity" button circled in yellow.

Additional annotations include "Create Manager Beans" circled in yellow at the bottom of the wizard window and "Filter Results" circled in yellow at the top of the query method window.

Table	Entity Name
<input checked="" type="checkbox"/> DEPARTMENT	Department
<input type="checkbox"/> DEPT	Dept
<input type="checkbox"/> EMP	Emp
<input type="checkbox"/> EMPACT	Empact
<input checked="" type="checkbox"/> EMPLOYEE	Employee
<input checked="" type="checkbox"/> EMPMDC	Empmdc

Attribute	Type
<input checked="" type="checkbox"/> admdept	employees.list.Department...
<input checked="" type="checkbox"/> departmentCollection	java.util.Set<employees...
<input checked="" type="checkbox"/> deptname	String
<input checked="" type="checkbox"/> deptno	String
<input checked="" type="checkbox"/> employeeCollection	java.util.Set<employees...
<input checked="" type="checkbox"/> location	String
<input checked="" type="checkbox"/> mgrno	employees.list.Employee

Portal Toolkit is all about Web 2.0 features

Use RAD to build rich internet applications to improve online user experience and increase customer satisfaction

Lower the barriers of adoption of Web 2.0 technologies

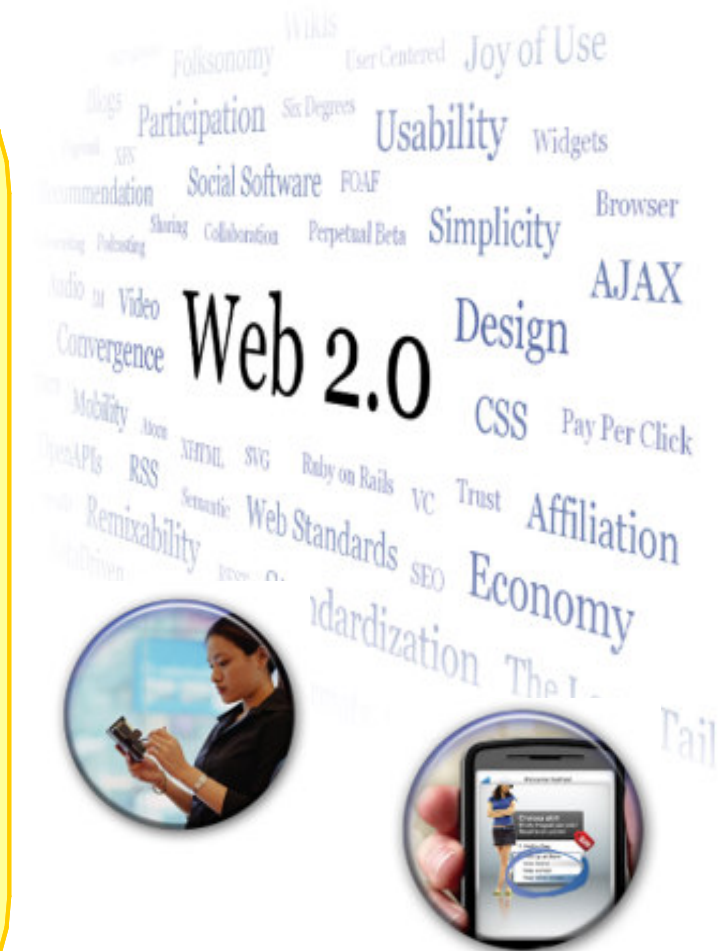
- Visual development of Web 2.0 pages

- Source level tools to aid with Javascript and dojo development

- Debug capabilities with Firebug integration

- Expose server side assets as Web 2.0 consumable services

Lightweight Ajax test server to rapidly preview web pages that include images, scripts, services, and data



End to End iWidget development

Create an iWidget with few clicks

Option to create

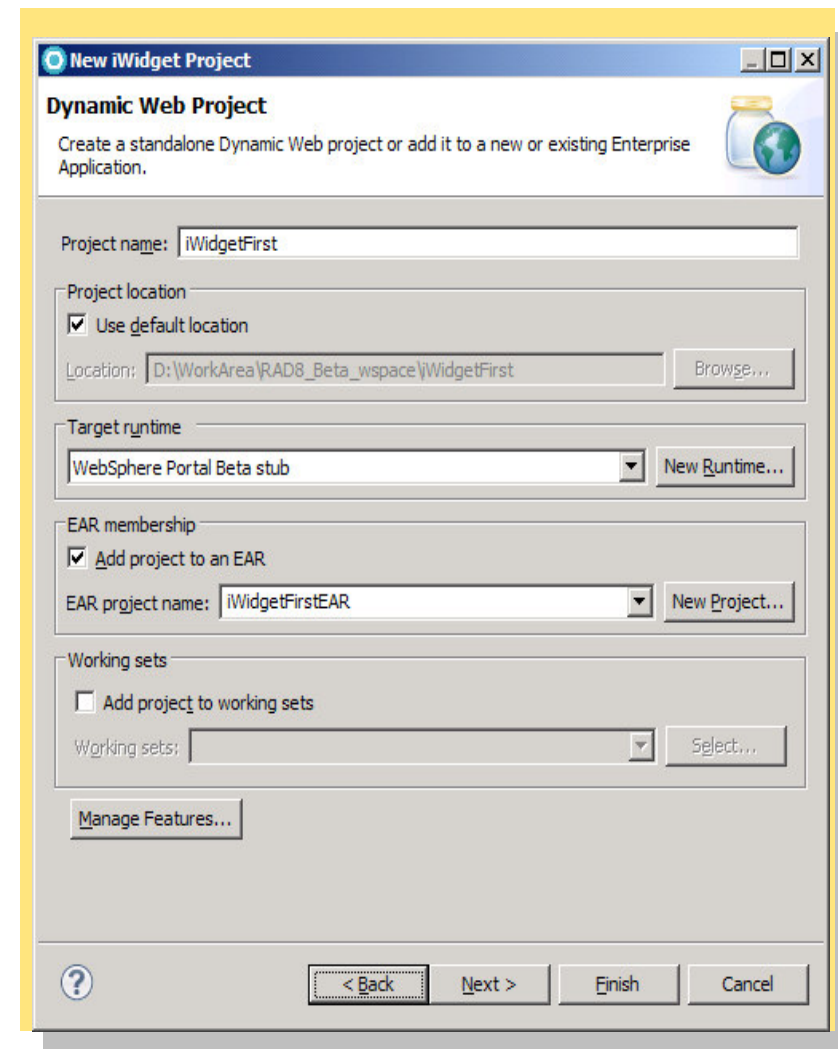
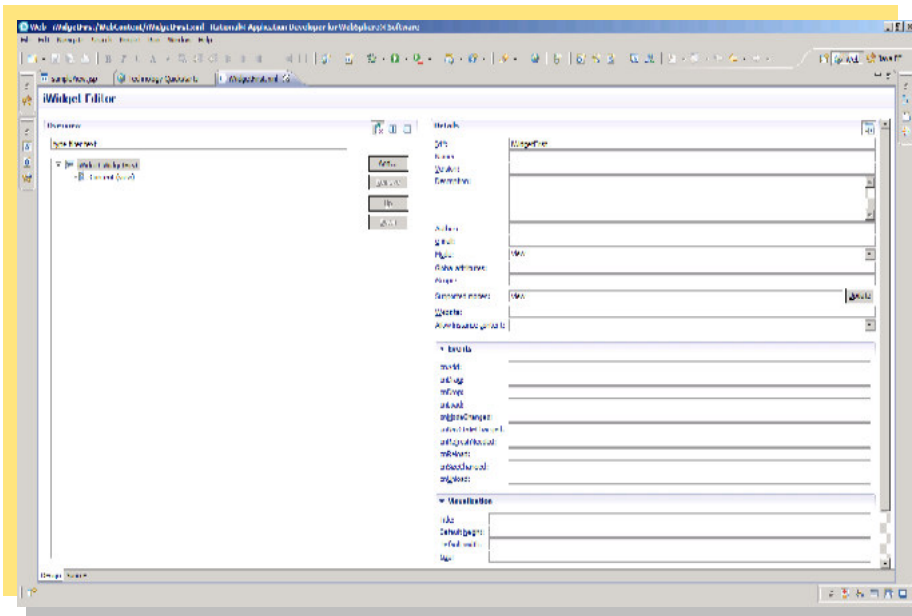
Event emitting iWidget

Event consuming iWidget

WYSIWYG editor for iWidget XML that includes validation

Deployment tools

Direct placement on server catalog



Easily create powerful ReST Services from server side code using RPC

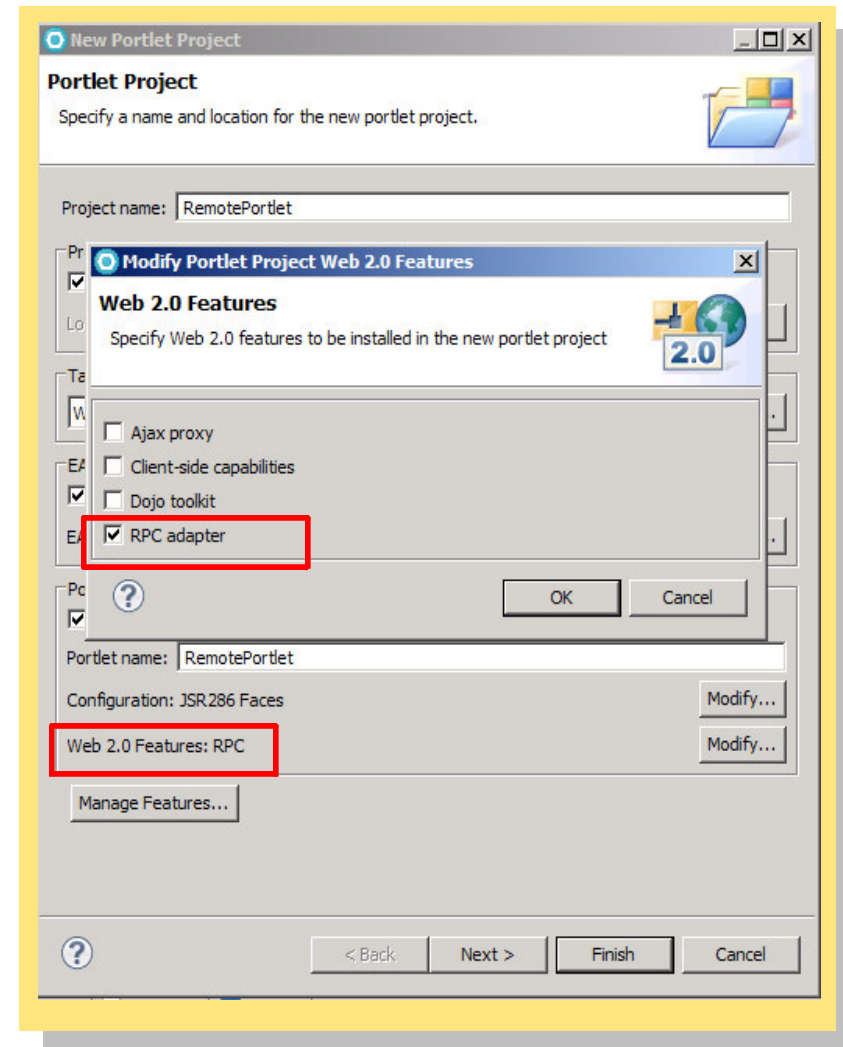
A handy way of exposing any server side code as ReST service that enables Web20 portal application creation

Single click invocation of wizards that takes away all your coding worries - no coding required, no testing of generated code required

Exposes your POJOs, session beans methods to be directly callable from JavaScript or client side code

Very intuitive and simple access to direct URLs of methods exposed

URLs generated as per portlet specifications for applications targeting Portal

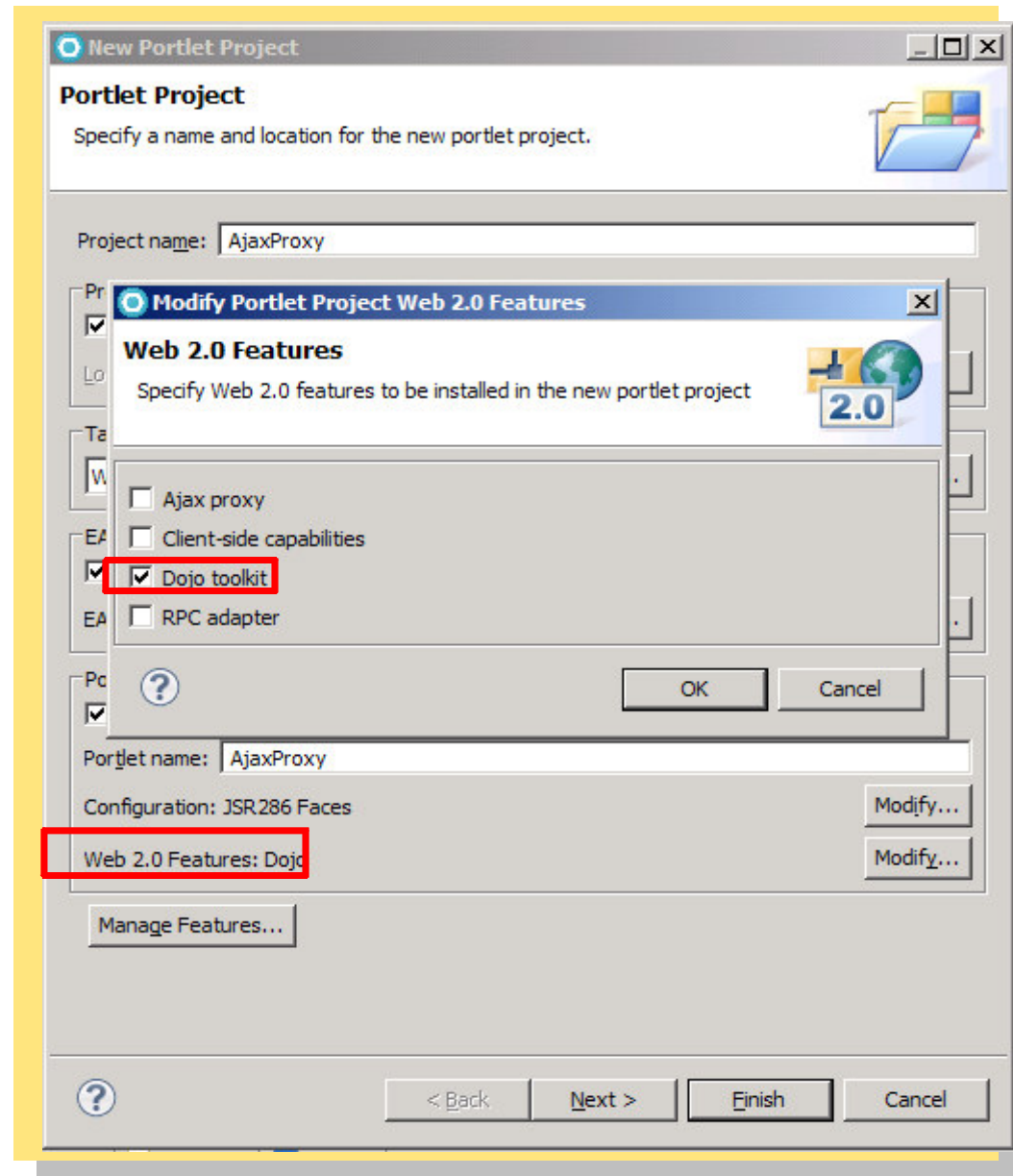


Create Exceptional Web Experience using Dojo tools

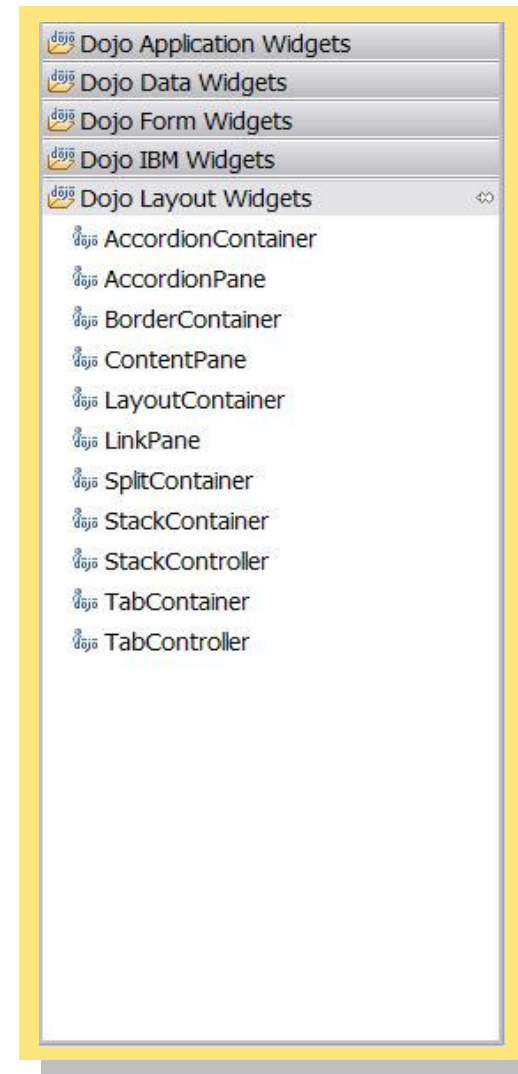
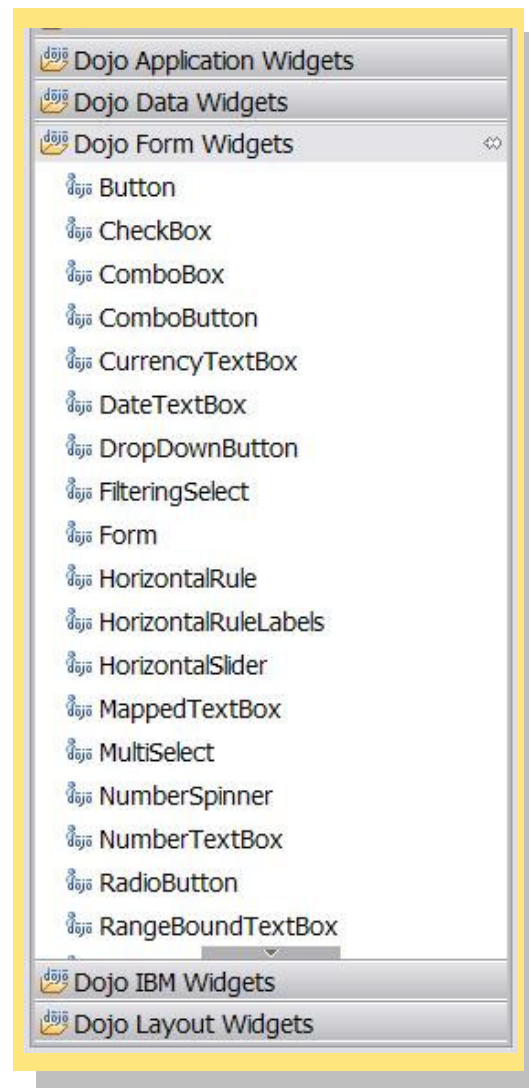
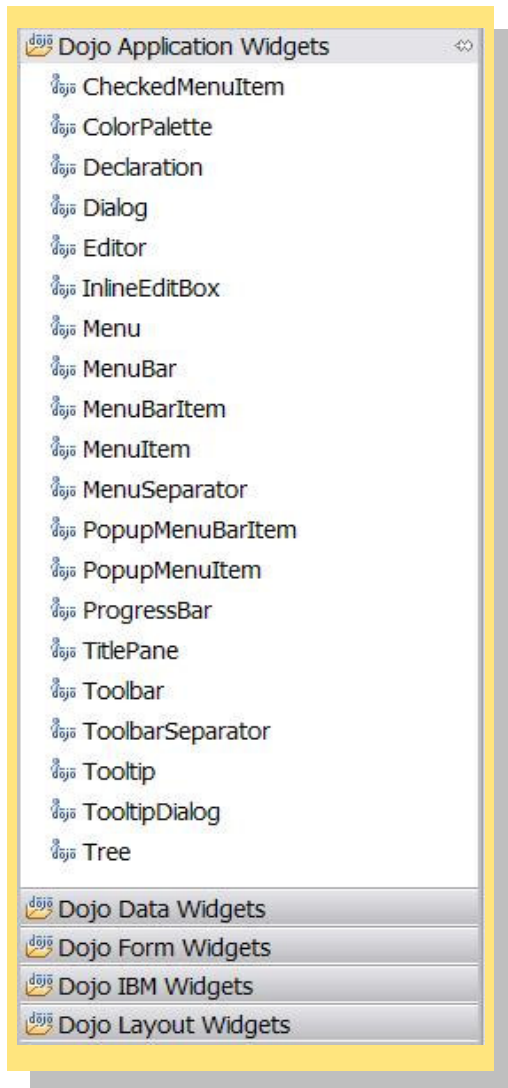
Rational Application Developer allows to configure and use various versions of Dojo library.

Solves challenges for Dojo development on Portal development on Portal

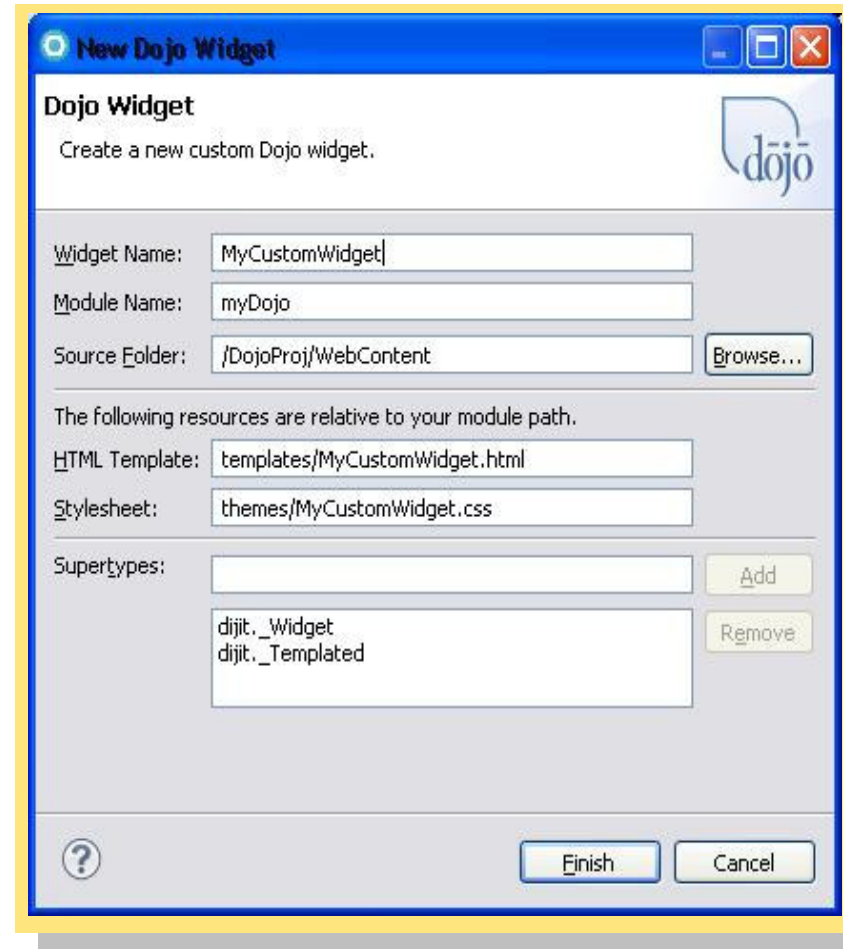
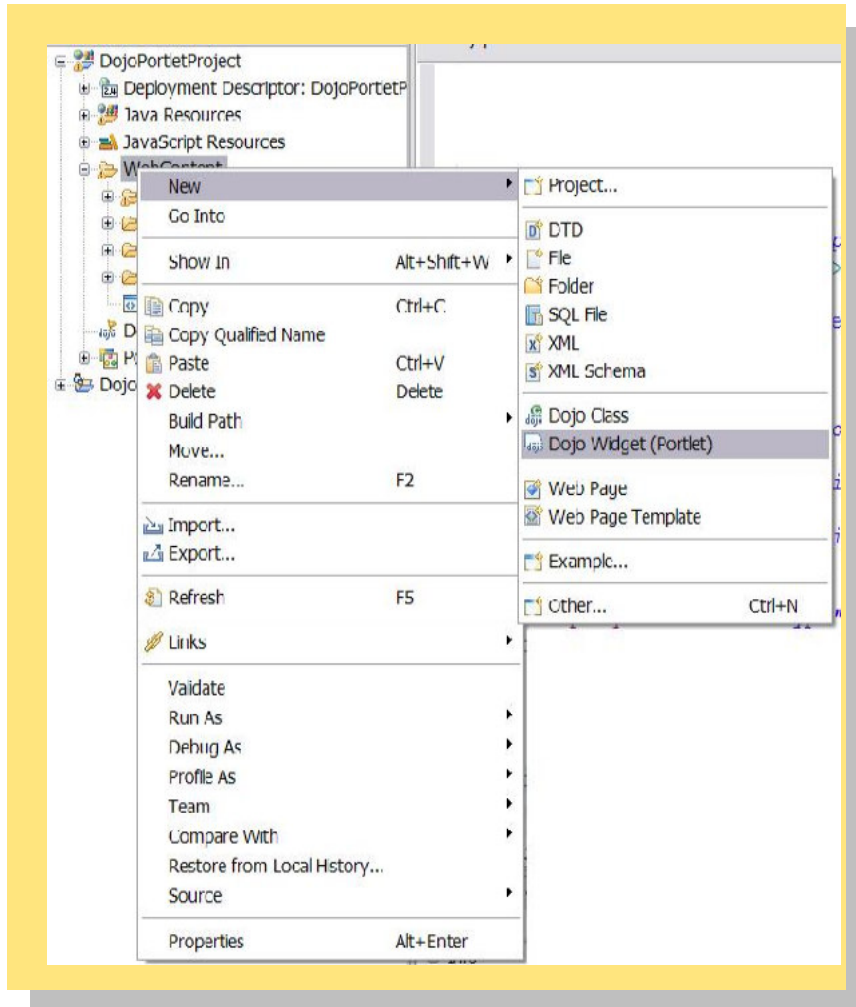
Incorporates best practices for Dojo and JavaScript



Dojo Widgets in RAD Palette: Easily create Exceptional Web Experience

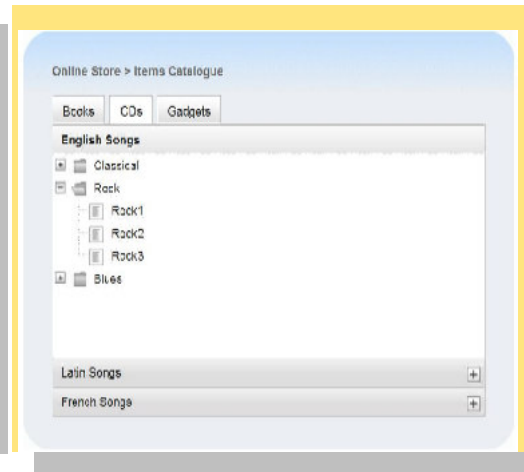
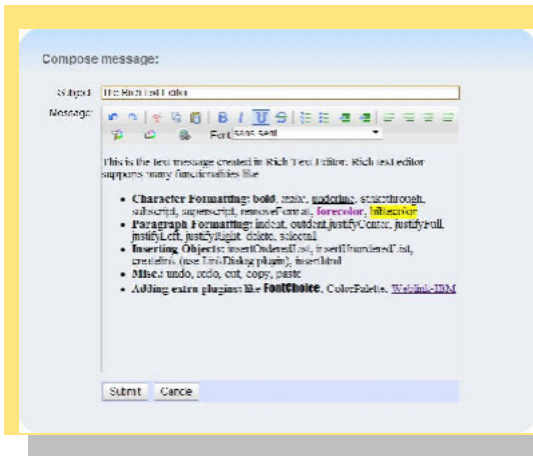
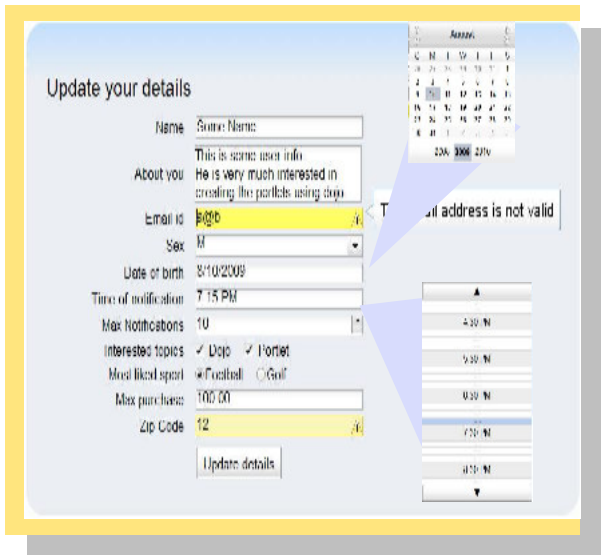


Wizards to help create custom dojo widgets



Exceptional User Interfaces with Dojo Widgets: Delivered!

Easily Drag and Drop from palette any Widget to create exceptional web experiences



Advance Dojo Features: Exclusively in RAD Portal Toolkit V8.0




Travel Plan Overview

Select a travel plan to view its details in the subscriber portlets




Date	Place From	Place to	Time
April 22, 2009	Delhi	New York	8:05 AM
April 24, 2009	New York	Moscow	6:45 PM
May 12, 2009	Sao Paulo	Delhi	2:15 PM
June 17, 2009	Beijing	London	12:25 PM
August 19, 2009	Paris	Delhi	7:15 AM

Travel Weather Forecast

Delhi



Prev-day	April 22, 2009	Next-day
		
25°C	26°C	22°C

New York



Prev-day	April 22, 2009	Next-day
		
23°C	28°C	25°C

Travel Clock

Delhi Time

Source Departure	Destination Arrival
	

New York Time

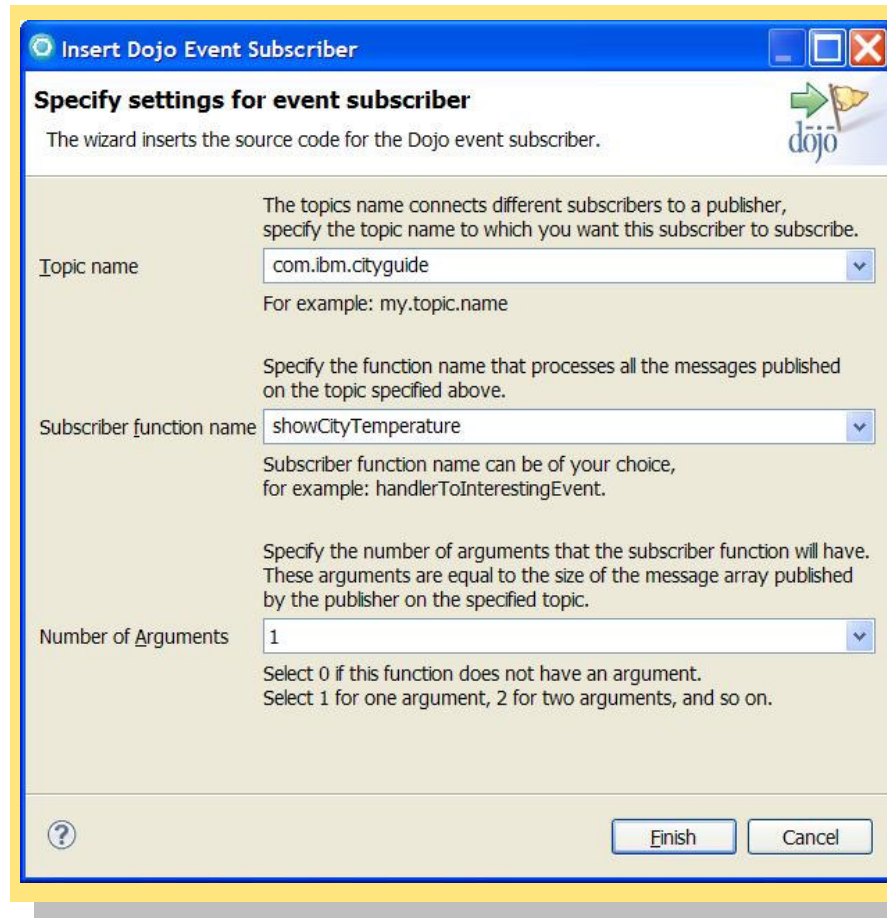
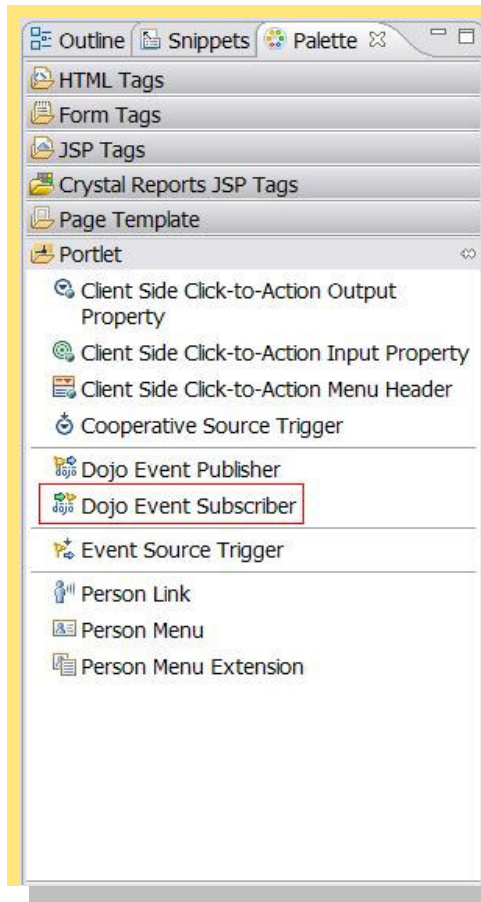
Source Departure	Destination Arrival
	

Client-side Inter Portlet Communication (IPC) without page refresh to create exceptional web experiences



Client side IPC using Dojo

Wizard to create Event Subscriber



Client side IPC using Dojo

Node Decorators to demark

Topic

Event

Auto-code generation

Connections are created for

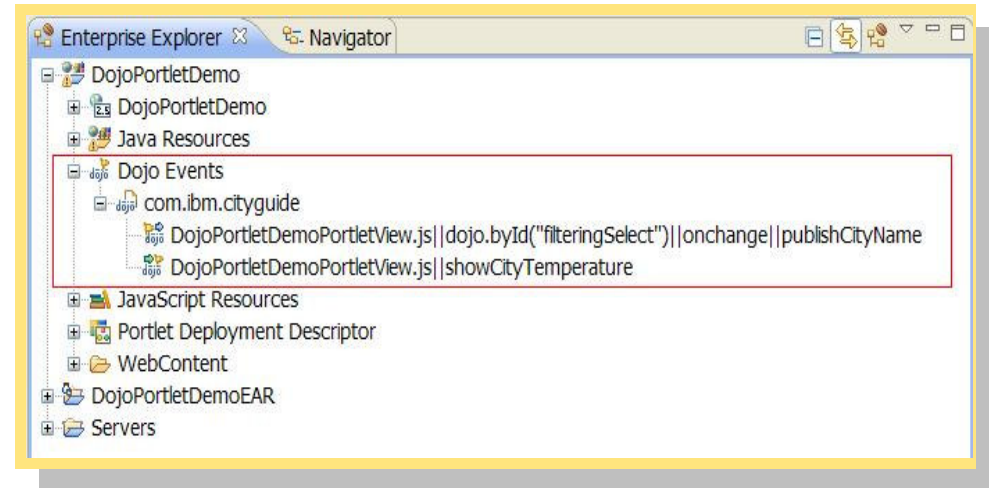
publishers

subscribers

Placeholder JS functions generated for

publishers

subscribers



Agenda

Exceptional Web Experience Overview

Rational Application Developer Overview

Rational Application Developer Portal Tool Kit Overview

Question and Answer Session





www.ibm/software/rational

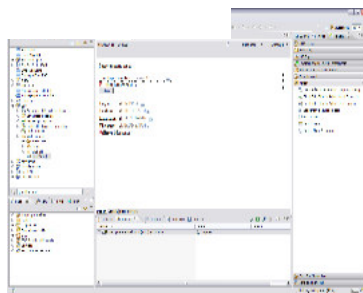


Easily create cohesive business applications



Web Services exposed by MS SharePoint

HTTP request/response

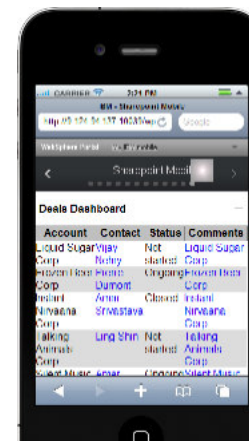
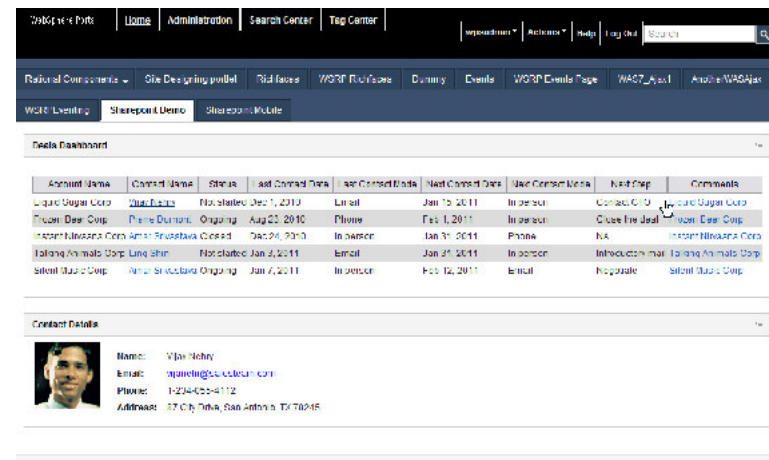


Rational software



SDO or JPA beans to access data from RDBMS

HTTP request/response



Additional IBM Rational Application Developer Information and Resources

Rational Application Developer Portal Toolkit Wiki Page:

<http://www.ibm.com/developerworks/wikis/display/rad/Portal+tools>

Rational Application Developer Portal Toolkit Developer's Forum:

<http://www.ibm.com/developerworks/forums/forum.jspa?forumID=430&start=0>

Rational Application Developer on developerWorks:

<http://www-128.ibm.com/developerworks/rational/products/rad/>

Rational Application Developer Release Notes Quick Links:

<http://w3-103.ibm.com/software/xl/portal/viewcontent?type=doc&srcID=R9&docID=Q037376H41907N67>

Rational Licensing Home Page:

<http://w3-103.ibm.com/software/xl/portal/viewcontent?type=doc&srcID=R9&docID=R107288S44149G18>

Rational Application Developer Beta Home Page:

<https://www14.software.ibm.com/iwm/web/cc/earlyprograms/rational/radob/index.shtml>

Rational Application Developer Beta Release Notes:

http://publib.boulder.ibm.com/infocenter/radhelp/v8/index.jsp?topic=/com.ibm.rad.install.doc/topics/rad_releasenotes.html

Rational Application Developer Beta What's New:

<http://www.ibm.com/developerworks/wikis/display/rad/Rational+Application+Developer+Version+8.0+Open+Beta>

Rational Application Developer Beta Infocenter:

<http://publib.boulder.ibm.com/infocenter/radhelp/v8/index.jsp>



Additional IBM WebSphere Portal Information and Resources

WebSphere Portal – IBM Site

<http://www-3.ibm.com/software/genservers/portal/>

WebSphere Portal Business Solutions Catalog

<http://catalog.lotus.com/wps/portal/portal>

WebSphere Portal Developer's Zone

<http://www-106.ibm.com/developerworks/websphere/zones/portal/>

Product Documentation and WebSphere Portal Wiki

<http://www-3.ibm.com/software/genservers/portal/library/>

<http://www-10.lotus.com/idd/portalwiki.nsf>

Education

<http://www-01.ibm.com/software/lotus/training/portallofferings.html>

WebSphere Portal Blog

<https://www.ibm.com/developerworks/mydeveloperworks/blogs/WebSpherePortal/>

WebSphere Portal Business Solutions Catalog:

<http://catalog.lotus.com/wps/portal/portal>

WebSphere Portal Product Information:

<http://www-306.ibm.com/software/genservers/portal>

WebSphere Portal Information Center Documentation:

<http://www.ibm.com/developerworks/websphere/zones/portal/proddoc.html>



Additional Rational Application Developer Resources

Rational Application Developer on developerWorks:

<http://www-128.ibm.com/developerworks/rational/products/rad/>

Rational Application Developer Release Notes Quick Links:

<http://w3-103.ibm.com/software/xl/portal/viewcontent?type=doc&srcID=R9&docID=Q037376H41907N67>

Rational Licensing Home Page:

<http://w3-103.ibm.com/software/xl/portal/viewcontent?type=doc&srcID=R9&docID=R107288S44149G18>

Rational Application Developer Zone on DeveloperWorks:

<http://www.ibm.com/developerworks/rational/products/rad/>

Rational Application Developer Red Books

http://www.redbooks.ibm.com/abstracts/SG247501.html?Open?S_TACT=105AGY82&S_CMP=GENSITE



Platforms Supported by Rational Application Developer

Linux®:

Red Hat Enterprise Linux Version 4.0 AS / ES (x32 / x64)

Red Hat Enterprise Linux Version 5.0 AS / ES (x32 / x64)

Red Hat Enterprise Linux Desktop Version 4.0 (x32)

Red Hat Enterprise Linux Desktop Version 5.0 (x32)

SUSE Linux Enterprise Server (SLES) Version 9 (x32 / x64)

SUSE Linux Enterprise Server (SLES) Version 10 (x32 / x64)

SUSE Linux Enterprise Desktop (SLED) 9 (x32)

SUSE Linux Enterprise Desktop (SLED) 10(x32)

Microsoft® Windows®:

Windows Server 2003

Windows XP

Windows Vista Business/Enterprise

Windows Server 2008

Application Server Test Environment:

IBM WebSphere Application Server Unit Test Environment v6.0, v6.1, v7.0

WebSphere Portal Server V6.1 (also compatible with v6.0 but not included)

Supports WebSphere Feature Packs: Web 2.0, Web Services, EJB 3.0

Hardware:

Display, minimum requirements: 1024 x 768

1GB RAM minimum; 2 GB RAM works well

Disk space requirements: 3.5 GB minimum for installing Rational Application Developer and additional disk space for development resources (minimum disk space can be reduced if optional features and run times are not installed).

Linux only supported on x86 architecture

Intel® Pentium® III 800 MHz or higher

recommended



Additional reasons why to use Rational Application Developer Portal Tools Kit?

IBM Rational Application Developer (RAD) is the most complete Java and Web IDE on the market.

Rational Application Developer's integrated set of Eclipse-based tools and best practices, as well as its local presence and expertise worldwide, minimizes development risks and maximizes return on investment.

By teaming directly with the WebSphere Application Server and WebSphere Portal Server teams Rational Application Developer provides industry leading capabilities for both runtimes.

Rational Application Developer can be extended using both third party Eclipse plug-ins as well as Rational specific plug-ins provided by IBM and its partners.

Rational Application Developer provides a reliable, robust and customizable set of tools, the IBM Software Development Platform, which is built on top of Eclipse .

Rational Application Developer integrates with various Rational solutions including Rational Team Concert, which transforms Rational Application Developer into a collaborative JEE development environment which such capabilities as "Collaborative Debugging"

Rational Application Developer leverages the IBM Installation Manager which provides enterprise-wide deployment capability for your organization.

The standard ECLIPSE Vs RAD PTK customer objection

Most Common Customer Question: I already have Eclipse for my Java coding – what more do I need?

My Response: If you're doing JEE development, your developers are spending a lot of time dealing with low-level infrastructure tasks such as directly editing the deployment descriptors, manually creating the mapping descriptors, writing code to test EJBs and more.

Rational Application Developer adds a wealth of productivity features for the J2EE and Portal/Portlet developer over and above the base Eclipse platform.



For More Information (1)

WebSphere Portal – IBM Site

<http://www-3.ibm.com/software/genservers/portal/>

WebSphere Portal Information Center

<http://www.ibm.com/developerworks/websphere/zones/portal/proddoc.html>

WebSphere Portal Business Solutions Catalog (on Lotus Greenhouse)

https://greenhouse.lotus.com/catalog/home_full.xsp?fProduct=WebSphere%20Portal

WebSphere and Lotus Web Content Management Portal Open Beta

<https://www14.software.ibm.com/iwm/web/cc/earlyprograms/lotus/portalopenbeta/>

WebSphere Portal Blog

<https://www.ibm.com/developerworks/mydeveloperworks/blogs/WebSpherePortal/>



For More Information (2)

IBM Lotus Connections

<http://www.ibm.com/software/lotus/products/connections>

IBM Lotus Forms

<http://www.ibm.com/software/lotus/forms>

IBM Lotus Quickr

<http://www.ibm.com/lotus/quickr>

IBM Lotus Sametime

<http://www.ibm.com/lotus/sametime>

WebSphere Commerce

<http://www.ibm.com/websphere/commerce>

WebSphere Process Server and Business Process Automation

<http://www.ibm.com/software/integration/wps>



QUESTIONS

www.ibm/software/rational

Daily iPod Touch giveaway

Complete your session surveys online each day at a conference kiosk or on your Innovate 2011 Portal!

Each day that you complete all of that day's session surveys, your name will be entered to win the daily IPOD touch!

On Wednesday be sure to complete your full conference evaluation to receive your free conference t-shirt!

SPONSORED BY

AllianceTech
Intelligent EVENTS





www.ibm/software/rational

© Copyright IBM Corporation 2011. All rights reserved. The information contained in these materials is provided for informational purposes only, and is provided AS IS without warranty of any kind, express or implied. IBM shall not be responsible for any damages arising out of the use of, or otherwise related to, these materials. Nothing contained in these materials is intended to, nor shall have the effect of, creating any warranties or representations from IBM or its suppliers or licensors, or altering the terms and conditions of the applicable license agreement governing the use of IBM software. References in these materials to IBM products, programs, or services do not imply that they will be available in all countries in which IBM operates. Product release dates and/or capabilities referenced in these materials may change at any time at IBM's sole discretion based on market opportunities or other factors, and are not intended to be a commitment to future product or feature availability in any way. IBM, the IBM logo, Rational, the Rational logo, Telelogic, the Telelogic logo, and other IBM products and services are trademarks of the International Business Machines Corporation, in the United States, other countries or both. Other company, product, or service names may be trademarks or service marks of others.