



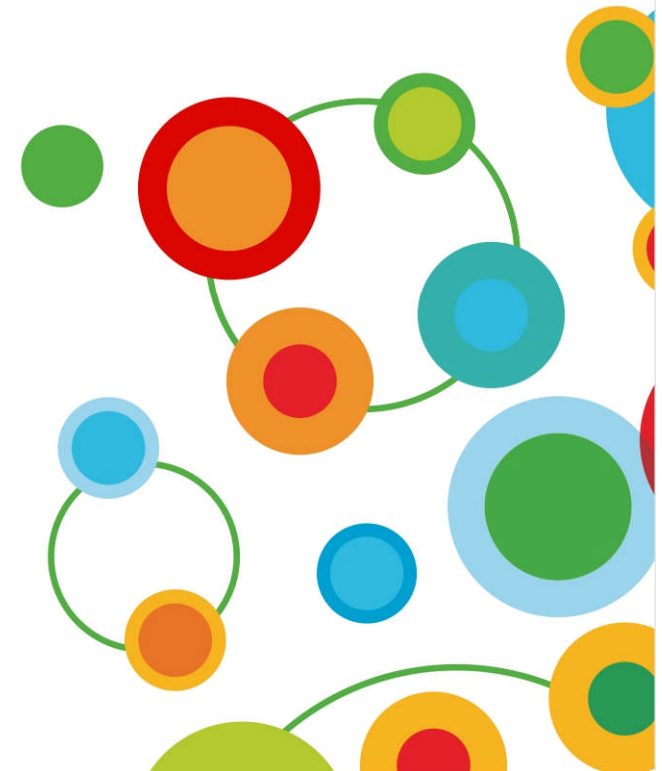
IBM Software

# Information Management & Analytics Forum **2013**

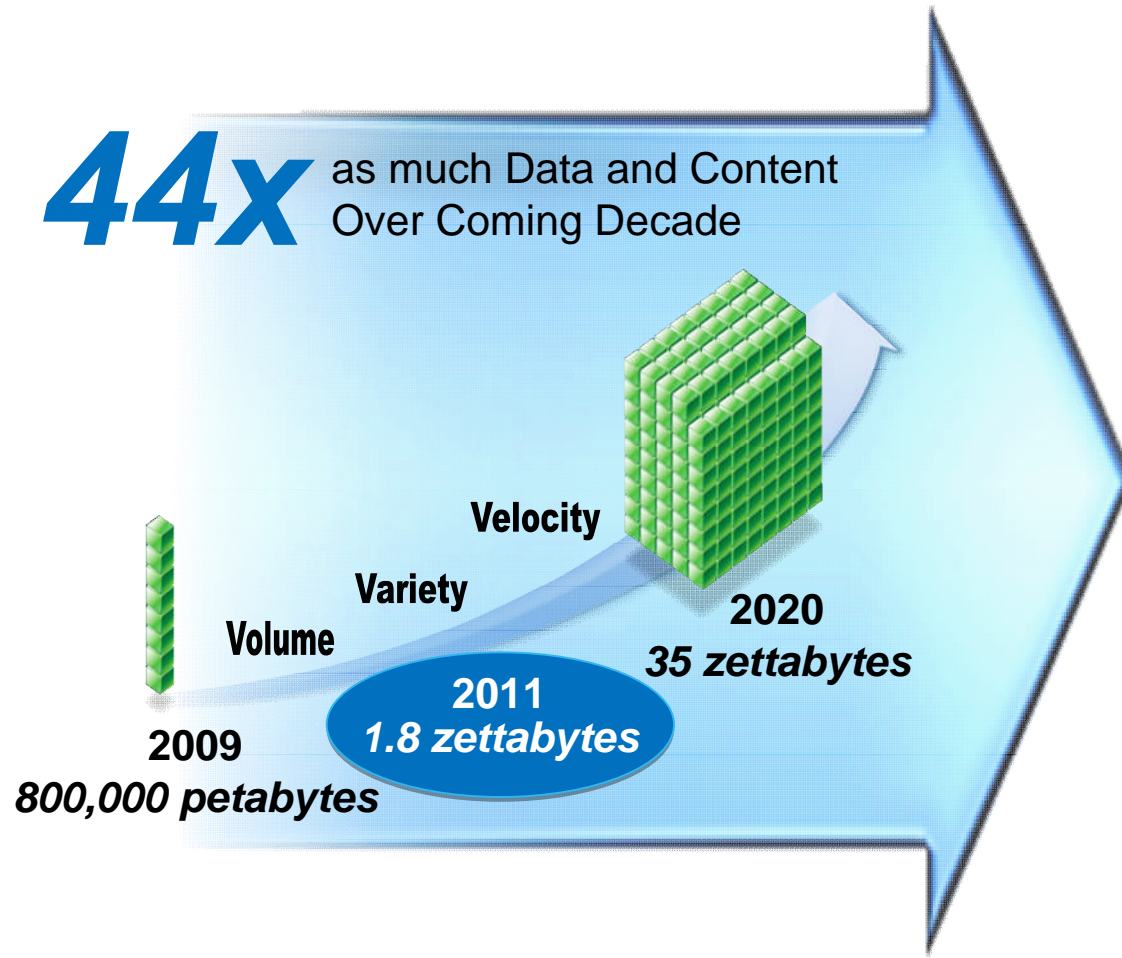
Return on Information: The New ROI

## Information Integration

Fast Track your Information  
with Information Integration



# Data is growing ... So is the need to take control



Organizations are integrating their information and putting it to work—for application consolidation, single view projects, and business analytics

# Silos of aging information slow down the organization



**Executive**

“We don’t have a common understanding of the data in our top customer reports”



**Support Director**

“I can’t trust these cross-sell/ up-sell reports”



**Sales Manager**

“I can’t get up-to-the-minute status on my orders”



**Customer**

# The pain is spread across all levels and functions of the organization



**Executive**



**Business Manager**



**Line Manager**



**Casual Business User**



**Business Analyst**



**Financial Analyst**

**DASHBOARDING**



**SCORECARDING**



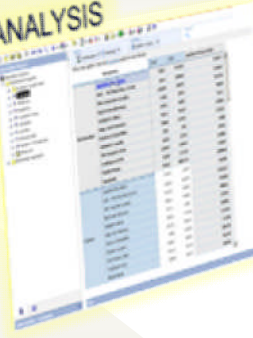
**REPORTING**



**QUERY**



**ANALYSIS**



**PLANNING**



**What is happening?**

**Why are we on/off track?**

**What is likely to happen?**

**What should we do next?**



# Those who take control of their data outperform other organizations

Without a consistent approach to Information Integration and Governance:

**10-40%** more is spent on each initiative on integration & governance

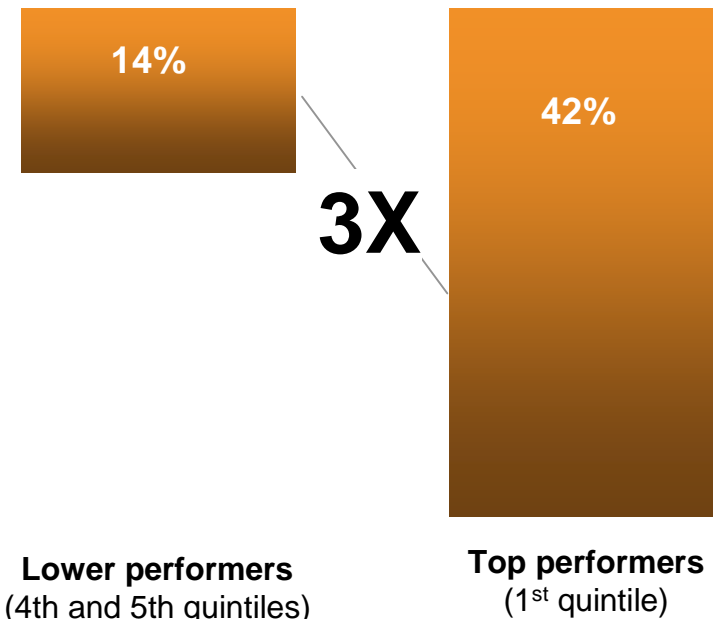
**72%** of projects are late and over budget

**40%** of projects fail to deliver the expected business value due to poor data quality

Sources: Standish Group, IBM research, IAG consulting, Forrester, IDC, WSJ March 18, 2011 Ashwin Shirvaikar

Organizations focused on information integration and governance are **top performers**

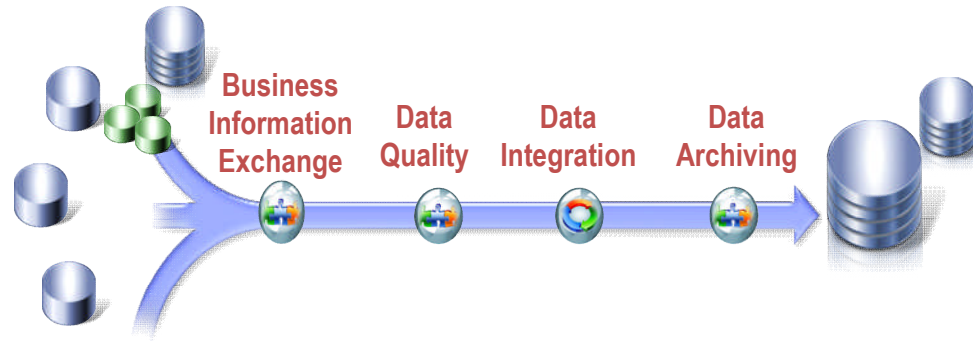
Percent of organizations investing in DQ tools



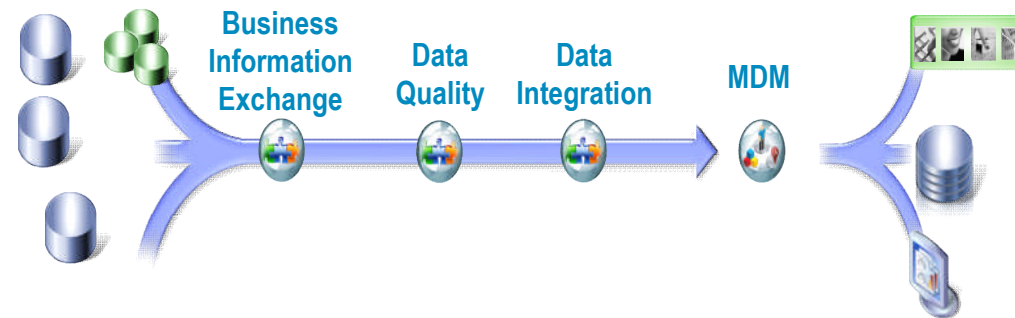
Source: *Breaking Away with Business Analytics and Optimization: New intelligence meets enterprise operations* at [www.ibm.com/gbs/intelligent-enterprise](http://www.ibm.com/gbs/intelligent-enterprise).

# Integration powers multiple information-intensive projects

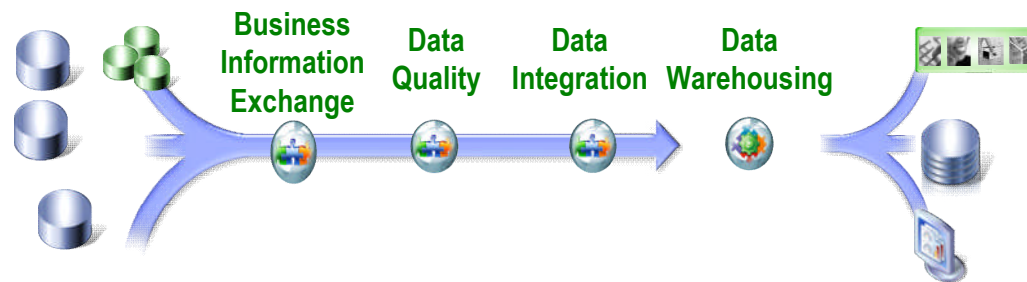
**Application consolidation & retirement**



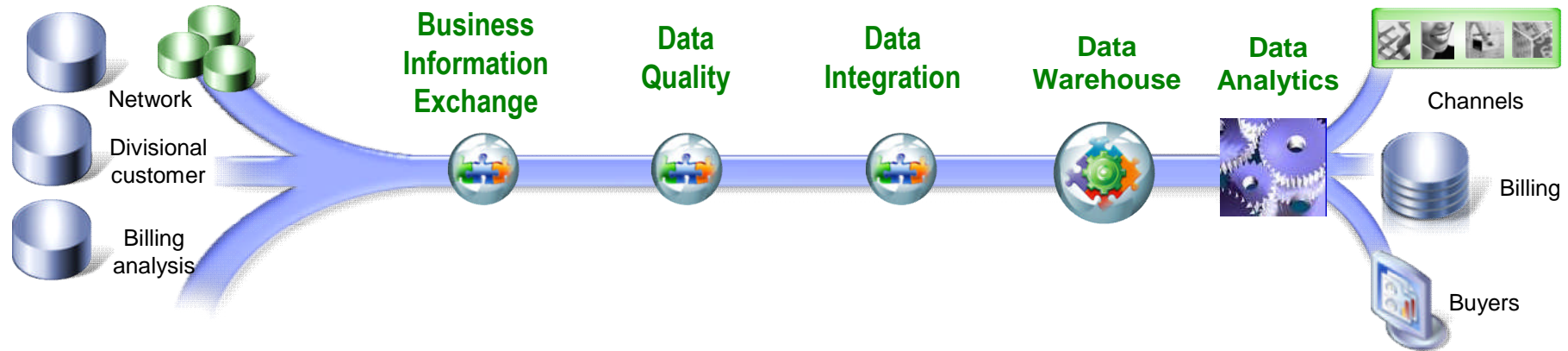
**Single view initiatives**



**Data warehousing & business analytics**



# Business intelligence depends on good data

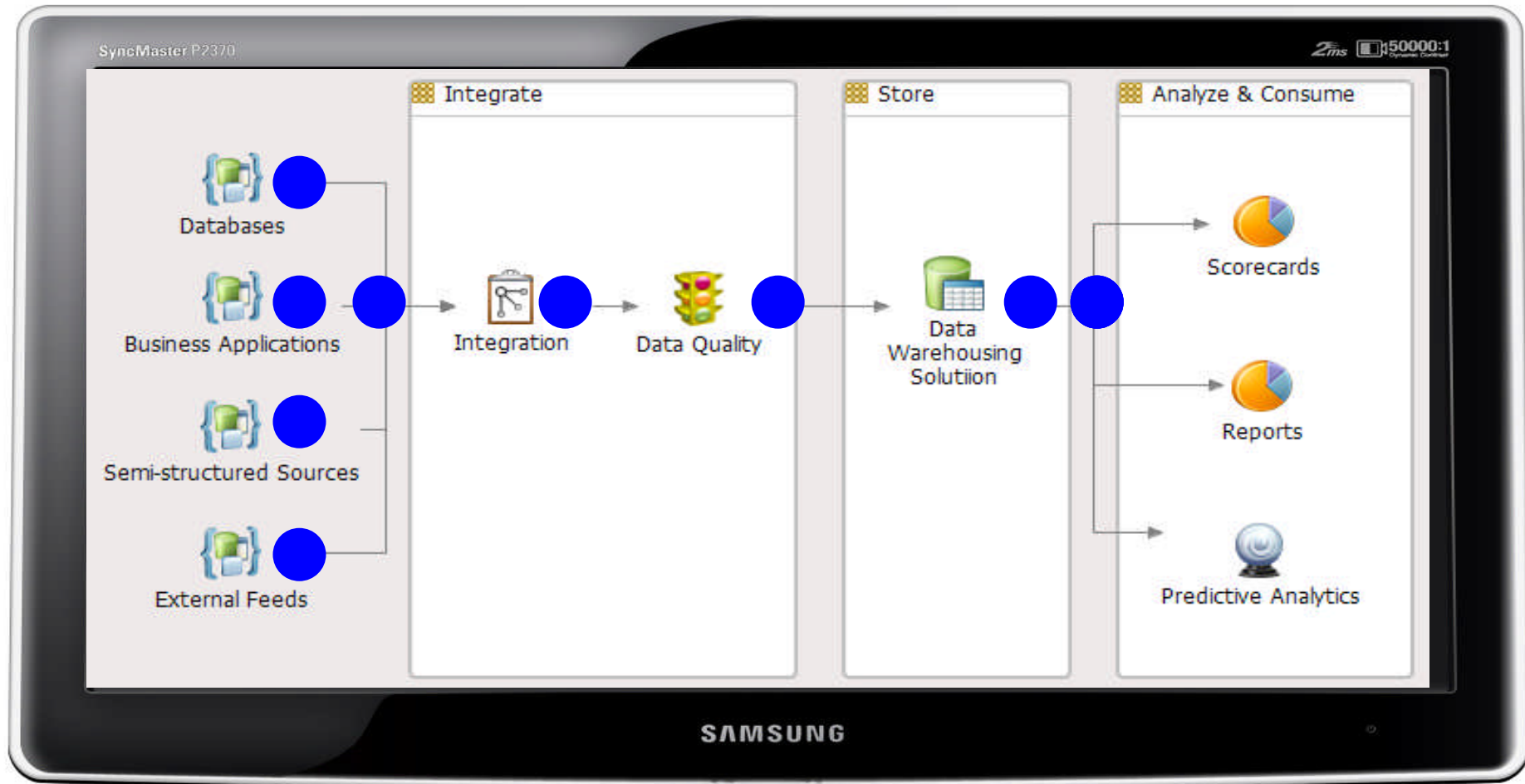


## Where is the data now?

### Is it ...

- *clean?*
- *timely?*
- *consistent?*
- *governed?*

# Blueprint: Building a data warehouse





# Business information exchange: *Understand your information, transforming it into an enterprise asset*

*Three dimensions of understanding and governance:*

## **Business**

**Gain & manage business perspective about information and align with IT**

- ★ *leading technology for business-friendly access & pre-packaged terms*
- ★ *time-saving Industry Models for warehouses in key industries*

## **Process**

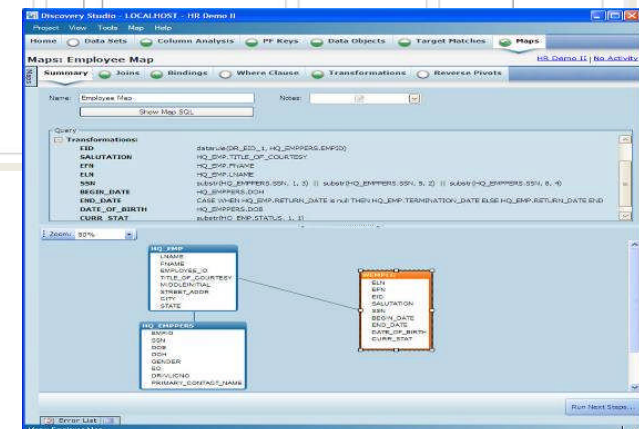
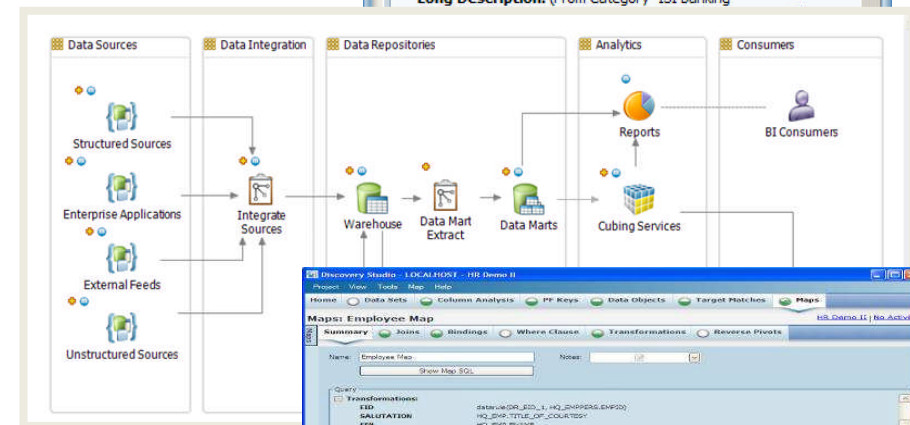
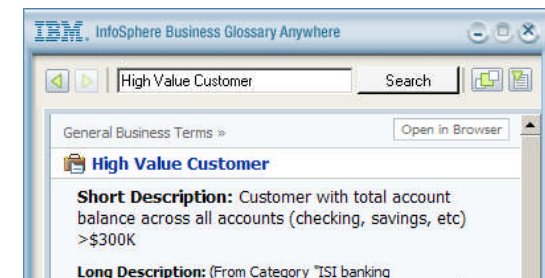
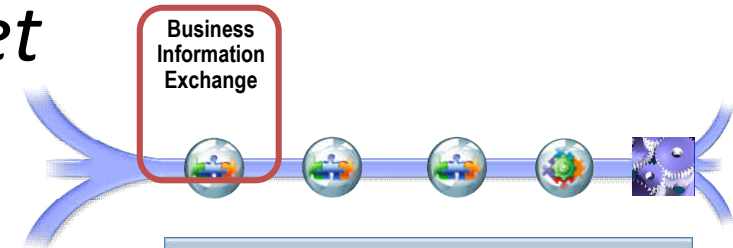
**Guide projects with best practices to achieve goals with reduced risk**

- ★ *unique capability to architect information projects with embedded methodology that can be tracked*

## **Technology**

**Discover data structures and understand your lineage to manage compliance**

- ★ *unique capability for discovering business objects*



# Data Quality: *Create & maintain quality data, turning data assets into trusted information*

*Analyze data, cleanse data and control data quality*

## Analyze

**Use source system analysis to understand your issues**

- ★ *automated discovery of critical data and hidden data relationships*

## Cleanse

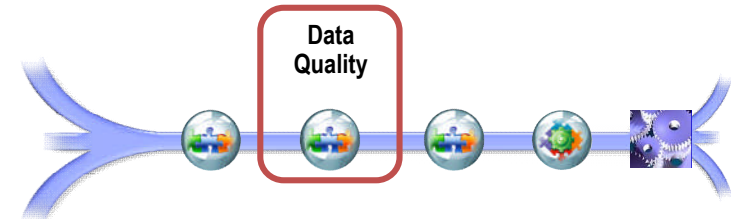
**Investigate, standardize, match and survive data**

- ★ *most comprehensive & customizable solution*

## Control & monitor quality

**Assess and monitor the quality of your data in any place (database/or data flow) and across systems**

- ★ *unique capability to align DQ metrics with business & governance objectives*

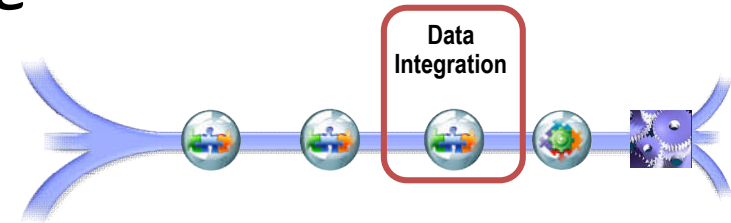


Name	Severity	Total Recor	# Met	# Not Met	Trend
ChemCo					
Company					
Unit: Catalog Depart	5.3%	6867	6160	707	
Unit: Catalog Division	2.25%	6867	6335	532	
Item					
Unit: Catalog Make/IB		6867	6860	7	
Unit: Catalog No Ast	0.59%	6867	6483	384	

Category	Value
Columns Analyzed	9.2%
Columns Not Analyzed	90.8%
Fail	9.2%
No Benchmark	25%
Pass	65.8%

# Integration: *Transform and deliver to any system, improving time to value*

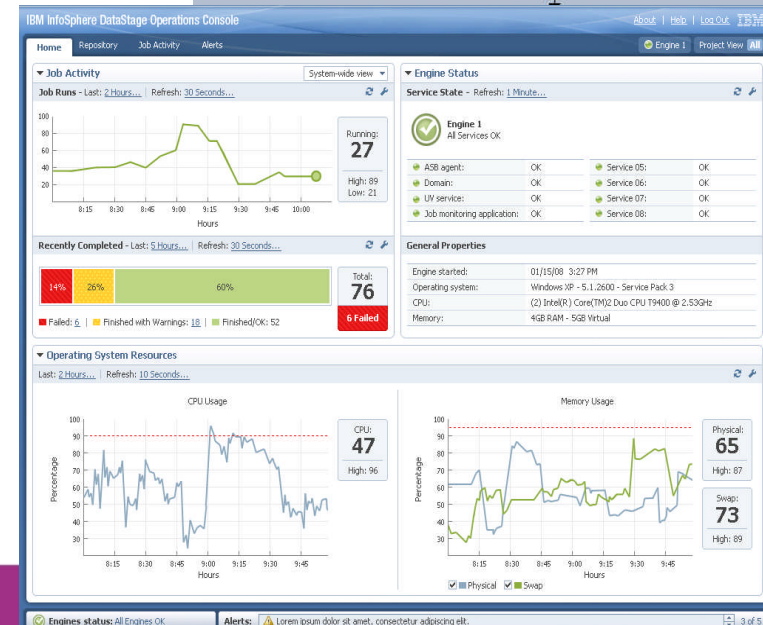
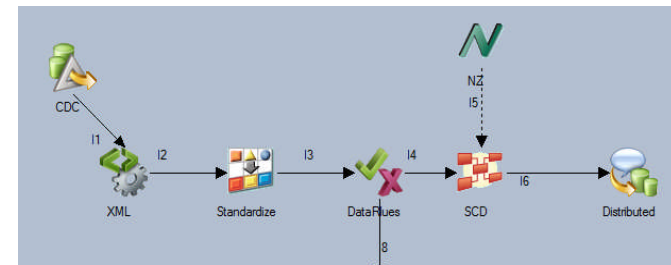
*Integrate and transform data on demand across multiple sources and targets ...*



## **Transform**

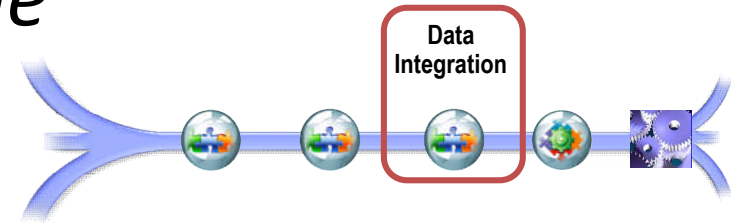
★ *Satisfy the most complex transformation requirements with the most scalable runtime available*

- Transform and aggregate any data volume
- Benefit from hundreds of built-in transformation functions
- Leverage metadata-driven productivity and enable collaboration
- Use a simple, web-based dashboard to manage your runtime environment
- Manage your requirements for transformation activities to align with the business



# Integration: *Transform and deliver to any system, improving time to value*

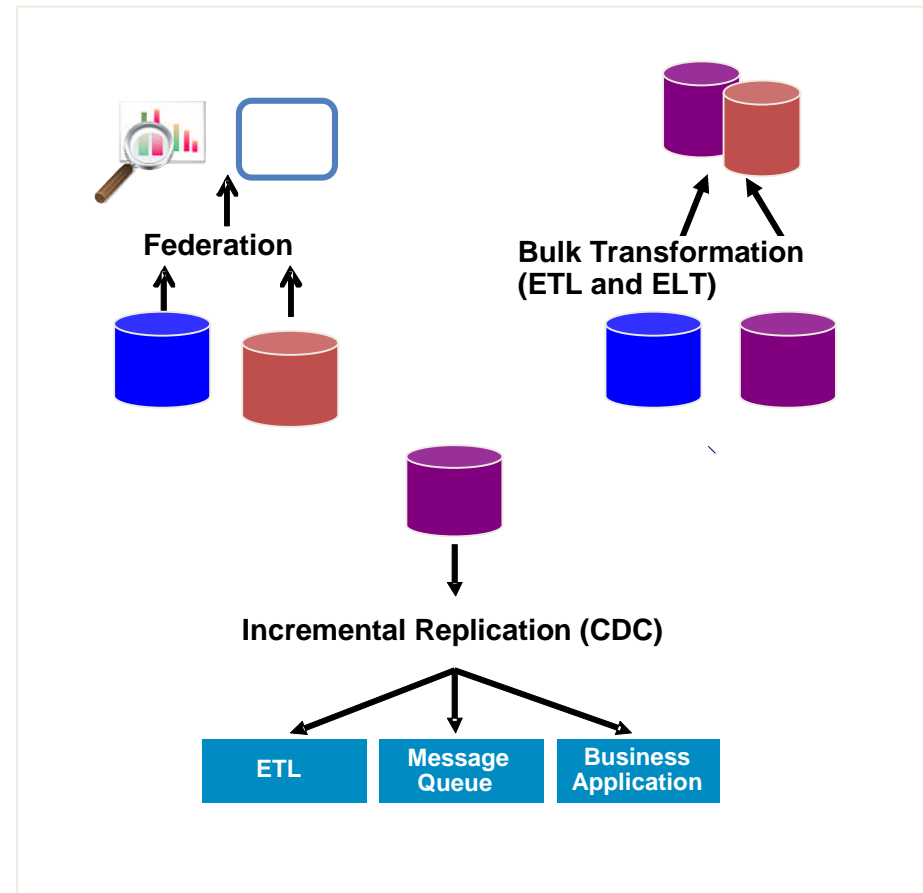
*Deliver data efficiently according to your business requirements*



## *Deliver*

★ *Leverage unique capabilities to:*

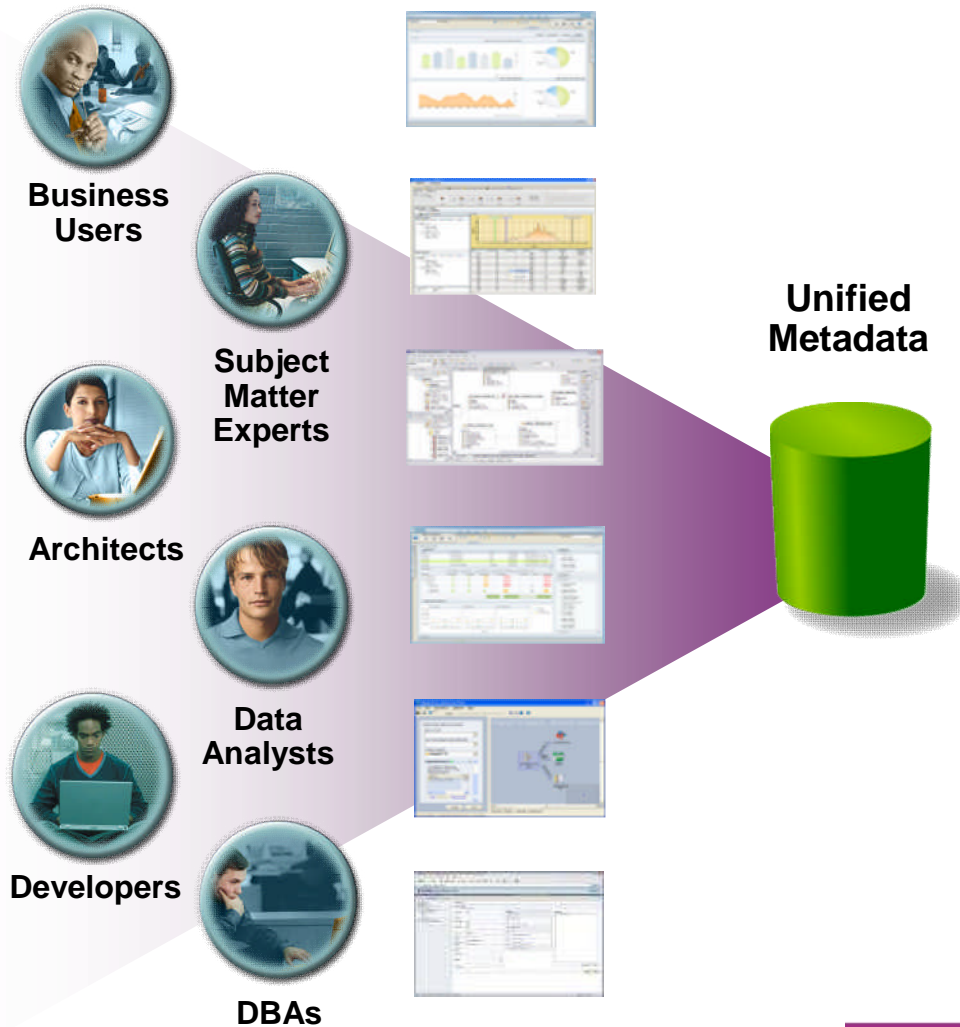
- Read from low-impact DBMS logs
- Apply any level of complex data integration/data quality logic
- Guarantee delivery through two-phased commit to one or more DBMS or MQ targets
- Support the most complex & challenging real-time integration requirements





# Common metadata layer: Why it's important

Different roles create and consume different metadata



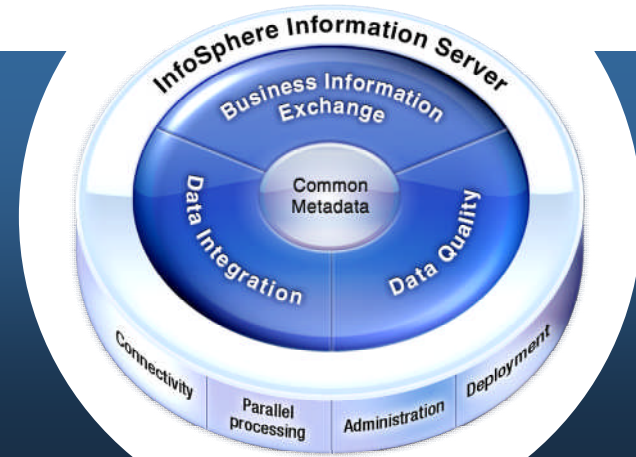
- Simplifies integration
- Facilitates change management and reuse
- Increases compliance with standards
- Increases trust and confidence in information



# The IBM approach to information integration and quality

## InfoSphere Information Server:

Integrating and transforming data and content to deliver accurate, consistent, timely and complete information on a single platform unified by a common metadata layer



### Business Information Exchange

#### *Understanding & Collaboration*

- Information blueprints
- Relationship discovery across data sources
- IT-to-business mapping



### Data Quality

#### *Cleansing & Monitoring*

- Analysis & validation
- Data cleansing
- Data quality rules & management



### Data Integration

#### *Transformation*

- Massive scalability
- Power for any complexity
- Total traceability

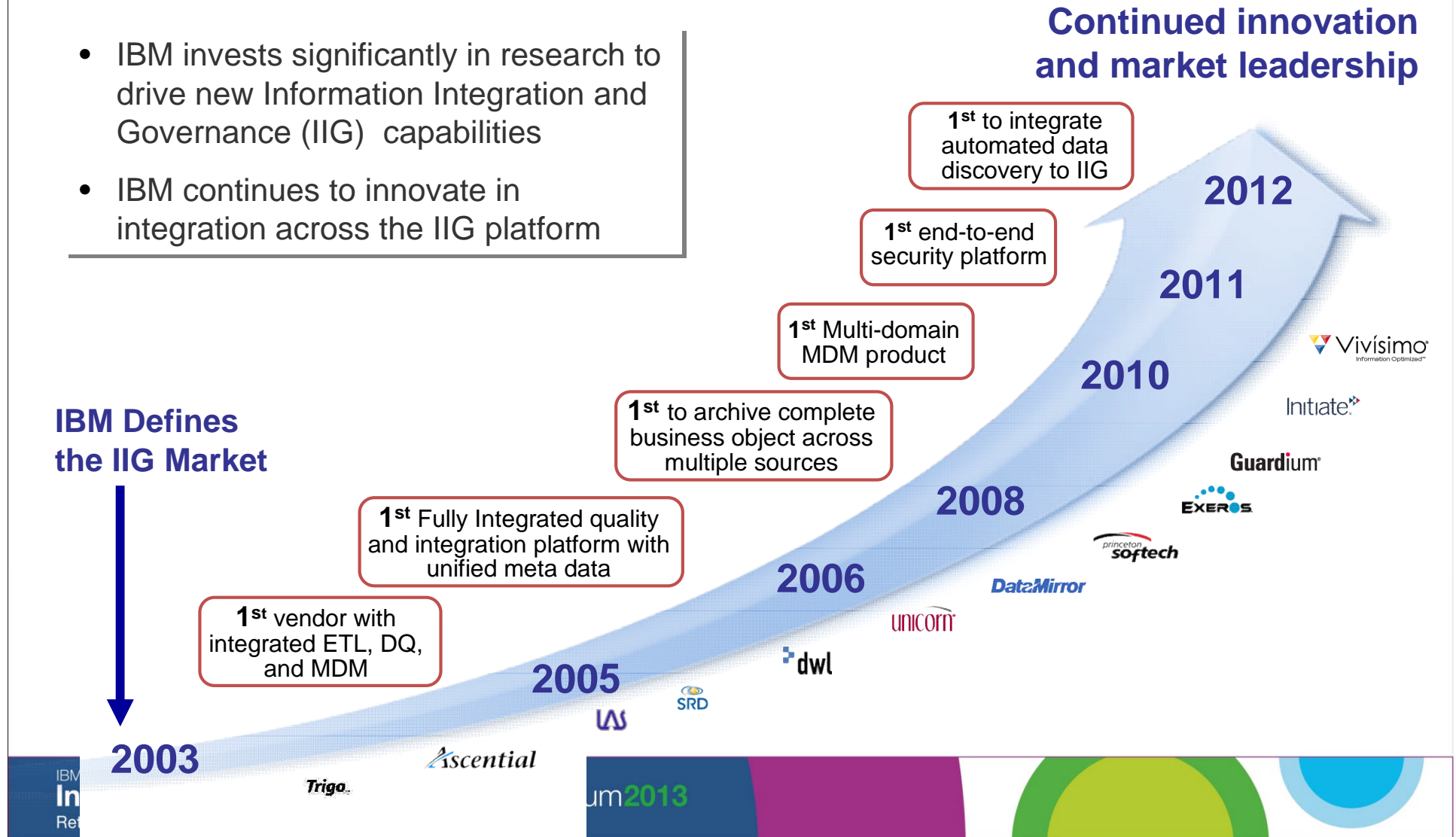
#### *Delivery*

- Data capture at any time
- Delivery anywhere
- Big data readiness

# IBM has been the thought leader in Information Integration and Governance and will continue to lead and innovate in this market

- IBM invests significantly in research to drive new Information Integration and Governance (IIG) capabilities
- IBM continues to innovate in integration across the IIG platform

**Continued innovation and market leadership**



# IBM InfoSphere

## *The trusted platform for trusted information*

### 1. Most Integrated Platform

- Deploy heterogeneous platform as needed
- Leverage across multiple use cases

### 2. Most Comprehensive Platform

- Covers every aspect of integration and governance
- Experience = lowest risk with the largest and most mature customer base

### 3. Most Intelligent Platform

- Prebuilt, Automated Functionality for Proactive Approach



# Next Steps: #1 – Take a deeper dive now



## 1. Attend the remaining sessions in this forum:

- Business and IT: Narrow the communication gap
- Data Quality: Good data in → good information out
- Data Integration: Have it your way
- Real-time integration with data replication and federation

# Next Steps: #2 – Watch a demo



1. Attend the remaining sessions in this forum



2. Go here to see a demo of IBM InfoSphere Information Server:  
<http://www-01.ibm.com/software/data/info/information-governance/ii.html>



# Next Steps: #3 – Discuss your requirements



1. Attend the remaining sessions in this forum



2. Go here to see a demo of IBM InfoSphere Information Server



**3. Contact your IBM representative to discuss your specific requirements for information integration, whether you need to:**

- Deliver trusted information to a data warehouse
- Consolidate or retire some of your applications
- Provide trusted information for a single view project
- Integrate big data into your business
- Address any other information integration need