



IBM Software Group

IBM WebSphere® Extended Deployment V6

Installation



@business on demand.

© 2006 IBM Corporation
Updated March 15, 2006

This presentation will cover installing WebSphere Extended Deployment V6.

Agenda

- Installation overview
- Walkthrough
- Logs
- Uninstalling
- Creating profiles



An overview of WebSphere XD installation will be followed by a screen-by-screen walkthrough. Log file locations, uninstalling, and a word about creating XD profiles will complete this presentation.

Section

Installation Overview



This section will provide an overview of WebSphere XD installation.

Overview

- WebSphere Extended Deployment (XD) 6.0 is an ‘add-on’ product for WebSphere Application Server Network Deployment
 - ▶ Requires WebSphere Application Server V6.0.2.5
- WebSphere XD for Mixed Server Environment installs a monitoring agent for non-WebSphere machines



WebSphere Extended Deployment is an add on product for WebSphere Application Server Network Deployment. This means that you must first install WebSphere Application Server version 6.0.2.5 before installing WebSphere XD. The WebSphere XD installer also has an option to install “WebSphere Extended Deployment for Mixed Server Environments”, which is a lightweight monitoring agent for non-WebSphere XD servers.

General installation process

- Check prerequisites online
 - ▶ <http://www.ibm.com/software/webservers/appserv/extend/requirements>
 - ▶ Lists supported platforms and software
- WebSphere Application Server Network Deployment V6.0.2.5 must be installed before installing WebSphere XD V6.0.1
 - ▶ WebSphere XD for Mixed Server Environments does not require WebSphere Application Server



The general process for installing WebSphere XD is as follows: First, check the Web site listed on this slide to be sure all prerequisites are met. Then install WebSphere Application Server Network Deployment.

General installation process (cont.)

- Installation procedure:
 - ▶ Install WebSphere Application Server V6.0
 - ▶ Install WebSphere Application Server V6.0 Refresh Pack 2
 - ▶ Install WebSphere Application Server V6.0.2 fix pack 5
 - ▶ Install WebSphere XD V6.0.1
- May create individual profiles before or after installation of WebSphere XD
 - ▶ Existing profiles can be 'augmented' by XD installer



The next step is to apply Refresh Pack 2, and Fix Pack 5. After you have fully updated your WebSphere Application Server installation, you can install WebSphere XD. You can create profiles either before or after installing WebSphere XD. If you create profiles before installation, the WebSphere XD installer will allow you to augment your existing profiles, turning them into WebSphere XD profiles.

Selecting the installation type

- **WebSphere Extended Deployment Version 6.0.1**
 - ▶ The full WebSphere XD product, to be installed on top of WebSphere Application Server V6.0.2.5
- **WebSphere Extended Deployment for Mixed Server Environment, Version 6.0.1**
 - ▶ A monitoring agent process that can be installed on non-WebSphere servers to enable better integration with a WebSphere XD front end
 - ▶ On Demand Router polls the remote agent for processor usage information



The WebSphere XD installer allows you to choose one of two installation types. The first is the full WebSphere XD product, which enables you to create WebSphere XD resources like nodes, application servers, and dynamic clusters. The second installation option installs a lightweight Java™-based monitoring agent on your server, for systems running non-WebSphere processes that will be part of your environment.

Section

Installation Walkthrough



This section will walk through a sample installation.

Starting the installation

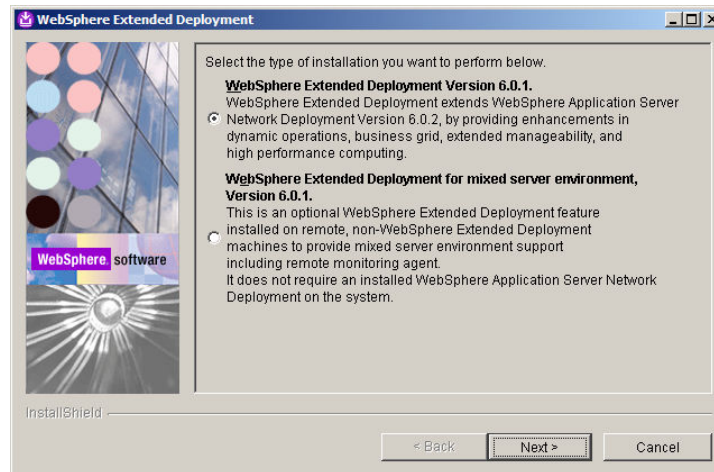
- Single installation image for all platforms
 - ▶ Platform-specific installation code is contained in the *XD* directory
- Run *install.bat* (Windows) or *install* (UNIX®/Linux®) to start the InstallShield wizard
 - ▶ Silent installation is invoked using the *-silent* option



Name	Size	Type
XD		File Folder
install	2 KB	File
install.bat	1 KB	Windows Batch File
xdsetup.response	4 KB	RESPONSE File

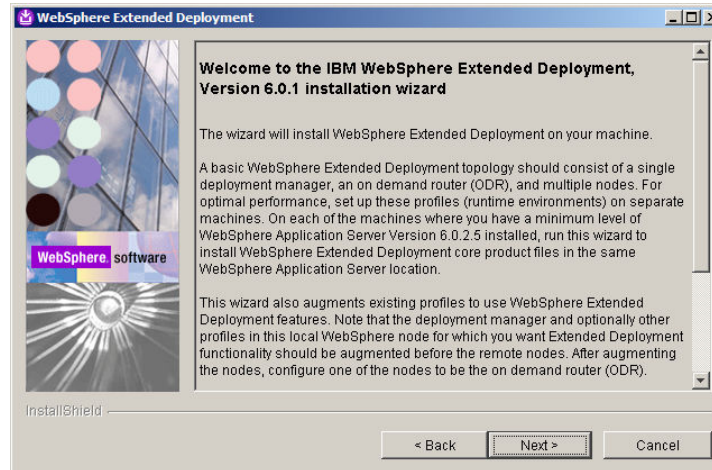
Unlike WebSphere Application Server, WebSphere XD is delivered as a monolithic installation image that contains installation code for all of the supported platforms. After you have installed WebSphere Application Server and the necessary maintenance, launch the installer from the CD by running *install* or *install.bat*. As with other WebSphere product installers, silent installation can be invoked using the “-silent” option.

Step 1: Select installation type



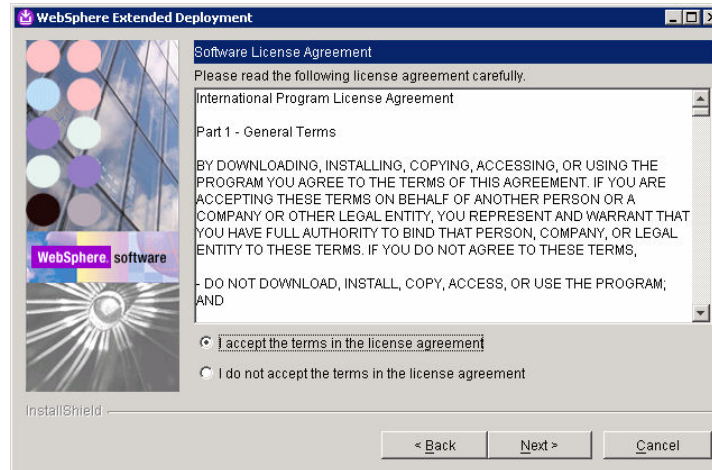
The first screen allows you to select between a full installation of WebSphere XD and the installation for a mixed server environment, which installs only the remote monitoring agent.

Step 2: Readme



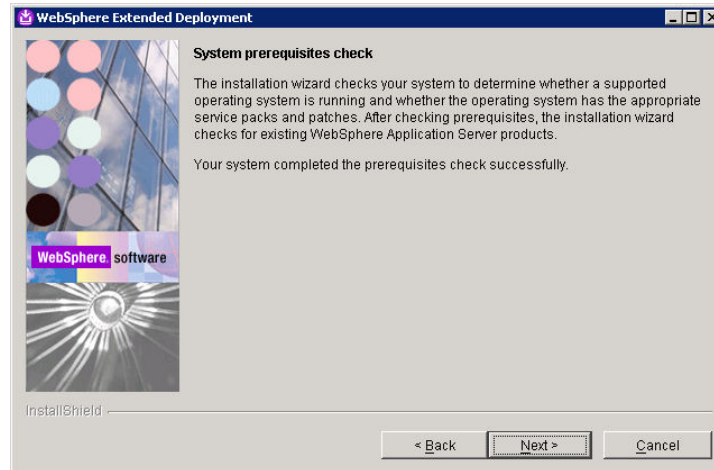
The next screen displays the read me file, containing some basic information about installing WebSphere XD. Read this information in its entirety before installing for the first time.

Step 3: License agreement



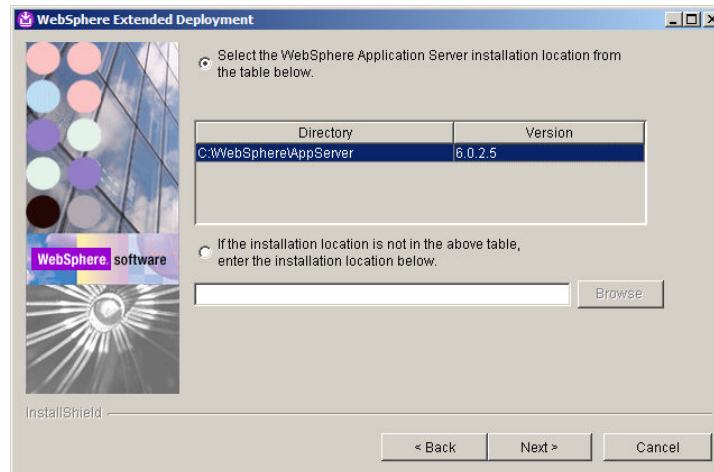
Next, you will be presented with the license agreement screen. Read the agreement carefully. By selecting the option indicating you accept the agreement and clicking next, you are agreeing to the terms of the license agreement.

Step 4: System prerequisites check



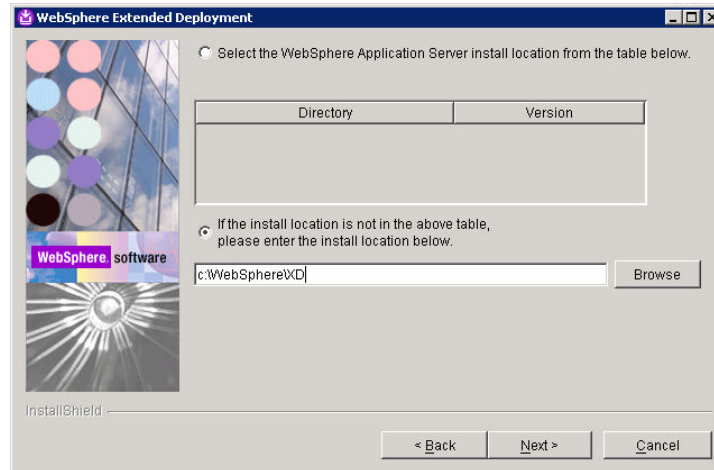
The installer will then check your operating system to verify that it meets the prerequisite requirements. If your operating system is missing patches or service packs, you will be asked to install them before you can proceed. If this is the case, exit the installer and install the necessary patches. Reboot if necessary, and start the installation over again.

Step 5: Select installation location



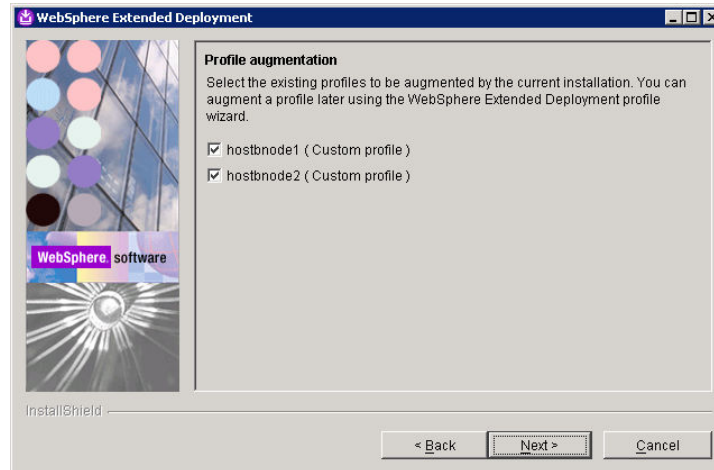
Select the location where you want to install WebSphere XD. The installer will try to detect your WebSphere Application Server installations and display them in the table. If multiple instances of WebSphere are installed, select the one in which you want to install WebSphere XD.

Step 5: Select installation location (cont.)



If your WebSphere Application Server installation is not shown in the table, enter it manually as shown here.

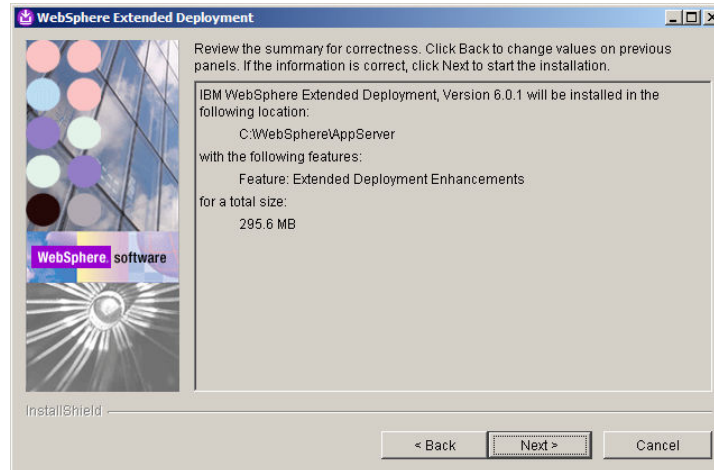
Step 6: Profile augmentation



'Augmenting' a profile is the process of updating a WebSphere Application Server profile, turning it into a WebSphere XD profile. The installer will display all of the profiles that are listed in the profileRegistry.xml file for the installation you selected previously. The profiles you select will become WebSphere XD profiles, and those left unchecked will remain fully functional WebSphere Application Server profiles.

You can augment a profile at a later time using the 'wasprofile -augment' command as documented in the WebSphere XD Information Center. You can also create profiles at a later time using the profile creation and augmentation tool.

Step 7: Installation summary



Finally, you will be presented with a summary of your installation choices. Clicking next will begin the installation process.

Installation logs

- WAS.XD.install.log
 - ▶ Main WebSphere XD installation log
- augmentProfile<*profilename*>.log
 - ▶ Logs for profile augmentation
 - ▶ Will contain reason for failure if the augment process fails



The installation log is located in the logs subdirectory of the directory that you selected for installation. The main installation log is named WAS.XD.install.log. If your installation fails, check this log for errors. Tasks launched by the installer, such as profile augmentation, also have their own logs, but may exist inside the logs directory of an individual profile.

Uninstalling

- WebSphere XD has a separate uninstaller
 - ▶ XD can be removed and a regular WebSphere Application Server installation will remain
 - ▶ Augmented profiles will be 'un-augmented'
- Located in `<INSTALL_ROOT>/_uninstXD`
- Silent uninstalling also supported
 - ▶ Pass the `-silent` flag to the uninstaller



WebSphere XD has its own uninstaller, located in the '_uninst' subdirectory. The uninstaller will remove WebSphere XD, and leave your WebSphere Application Server installation in place. As with the WebSphere Application Server uninstaller, you can launch a silent uninstallation by passing the '-silent' flag to the uninstall program.

Creating WebSphere XD profiles

- XD provides a new Profile Creation and Augmentation Tool
 - ▶ `<INSTALL_ROOT>/bin/profileCreator/XD/pcat<platform>.<extension>`
 - For example, pcatLinux390.bin or pcatWindows.exe
 - ▶ Creates new WebSphere XD profiles
 - ▶ Augments WebSphere Application Server profiles
- The original Profile Creation Tool only creates WebSphere Application Server profiles
 - ▶ `<INSTALL_ROOT>/bin/profileCreator/pct.exe (.sh)`
 - ▶ These profiles have no WebSphere XD capabilities unless they are augmented



Once you have installed WebSphere XD, it is important to remember that profiles must be augmented before they gain WebSphere XD capabilities. If you did not augment your profiles from the installer, use the wasprofile command-line tool, or the new profile creation and augmentation tool. This tool is similar to the original profile creation tool provided with WebSphere Application Server, but it can create and augment WebSphere XD profiles.

Summary

- WebSphere XD is installed as an add-on to WebSphere Application Server Network Deployment
 - ▶ Requires WebSphere Application Server V6.0.2.5
- XD provides a new profile creation tool
 - ▶ Creates new XD profiles and augments existing profiles
- Installer can also install the remote monitoring agent



In summary, installing WebSphere XD 6.0 requires that you first install WebSphere Application Server 6.0.2, since WebSphere XD is an add-on product, rather than a stand-alone product.

You must also augment your profiles, giving the nodes created on them WebSphere XD capabilities.

In addition to installing the full WebSphere XD product, the installer can also be used to install a lightweight remote monitoring agent on non-WebSphere nodes that you wish to use in your WebSphere XD environment.

Trademarks, Copyrights, and Disclaimers

The following terms are trademarks or registered trademarks of International Business Machines Corporation in the United States, other countries, or both:

IBM	CICS	IMS	MQSeries	Tivoli
IBM (logo)	Cloudscape	Informix	OS/390	WebSphere
e(logo)/business	DB2	iSeries	OS/400	xSeries
AIX	DB2 Universal Database	Lotus	pSeries	zSeries

Java and all Java-based trademarks are trademarks of Sun Microsystems, Inc. in the United States, other countries, or both.

Microsoft, Windows, Windows NT, and the Windows logo are registered trademarks of Microsoft Corporation in the United States, other countries, or both.

Intel, ActionMedia, LANDesk, MMX, Pentium and ProShare are trademarks of Intel Corporation in the United States, other countries, or both.

UNIX is a registered trademark of The Open Group in the United States and other countries.

Linux is a registered trademark of Linus Torvalds.

Other company, product and service names may be trademarks or service marks of others.

Product data has been reviewed for accuracy as of the date of initial publication. Product data is subject to change without notice. This document could include technical inaccuracies or typographical errors. IBM may make improvements and/or changes in the product(s) and/or program(s) described herein at any time without notice. Any statements regarding IBM's future direction and intent are subject to change or withdrawal without notice, and represent goals and objectives only. References in this document to IBM products, programs, or services does not imply that IBM intends to make such products, programs or services available in all countries in which IBM operates or does business. Any reference to an IBM Program Product in this document is not intended to state or imply that only that program product may be used. Any functionally equivalent program, that does not infringe IBM's intellectual property rights, may be used instead.

Information is provided "AS IS" without warranty of any kind. THE INFORMATION PROVIDED IN THIS DOCUMENT IS DISTRIBUTED "AS IS" WITHOUT ANY WARRANTY, EITHER EXPRESS OR IMPLIED. IBM EXPRESSLY DISCLAIMS ANY WARRANTIES OF MERCHANTABILITY, FITNESS FOR A PARTICULAR PURPOSE OR NONINFRINGEMENT. IBM shall have no responsibility to update this information. IBM products are warranted, if at all, according to the terms and conditions of the agreements (e.g., IBM Customer Agreement, Statement of Limited Warranty, International Program License Agreement, etc.) under which they are provided. Information concerning non-IBM products was obtained from the suppliers of those products, their published announcements or other publicly available sources. IBM has not tested those products in connection with this publication and cannot confirm the accuracy of performance, compatibility or any other claims related to non-IBM products. IBM makes no representations or warranties, express or implied, regarding non-IBM products and services.

The provision of the information contained herein is not intended to, and does not, grant any right or license under any IBM patents or copyrights. Inquiries regarding patent or copyright licenses should be made, in writing, to:

IBM Director of Licensing
IBM Corporation
North Castle Drive
Armonk, NY 10504-1785
U.S.A.

Performance is based on measurements and projections using standard IBM benchmarks in a controlled environment. All customer examples described are presented as illustrations of how those customers have used IBM products and the results they may have achieved. The actual throughput or performance that any user will experience will vary depending upon considerations such as the amount of multiprogramming in the user's job stream, the I/O configuration, the storage configuration, and the workload processed. Therefore, no assurance can be given that an individual user will achieve throughput or performance improvements equivalent to the ratios stated here.

© Copyright International Business Machines Corporation 2005,2006. All rights reserved.

Note to U.S. Government Users - Documentation related to restricted rights-Use, duplication or disclosure is subject to restrictions set forth in GSA ADP Schedule Contract and IBM Corp.