



IBM Software Group

WebSphere® Business Monitor V6.1

Monitor model editor overview



@business on demand.

© 2008 IBM Corporation
Updated March 3, 2008

This presentation covers the new features of WebSphere Business Monitor Version 6.1 monitor model editor.

Agenda

- Environment and migration
- Usability enhancements



This is the agenda for the presentation.

You will see the environment for installing the monitor model editor, plus the migration story for this release. You will also review the enhancements to the usability of the monitor model editor.

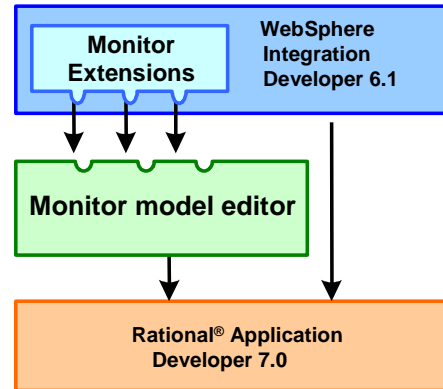
Section

Environment and migration

This section of the presentation covers the environment and migration topics.

Monitor toolkit prerequisites

- In 6.1, you can choose to install on top of Rational Application® Developer 7 or WebSphere Integration Developer 6.1.
- If WebSphere Integration Developer is being used, the Monitor Toolkit provides tight integration, including template based generation, refactoring and synchronization.



5

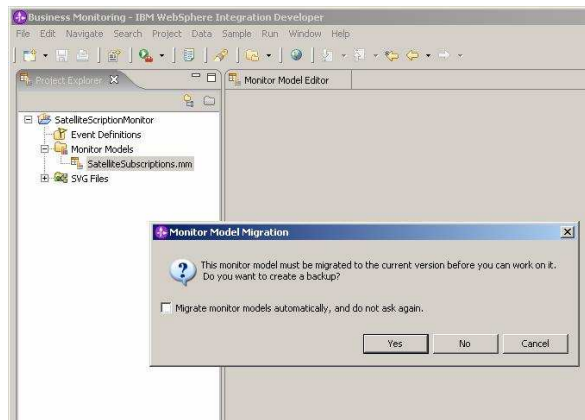
Monitor model editor overview

© 2008 IBM Corporation

In version 6.1, you can choose to install on top of Rational Application Developer 7 or WebSphere Integration Developer 6.1. If WebSphere Integration Developer is being used, the Monitor Toolkit provides tight integration, including template based generation, refactoring and synchronization. The Rational Application Developer option is a benefit for customers who do not otherwise require WebSphere Integration Developer, since Rational Application Developer has a smaller footprint than WebSphere Integration Developer.

Monitor model migration

- Need for migration detected based on target namespace
 - ▶ <http://www.ibm.com/xmlns/prod/websphere/monitoring/6.0.2/mm>
 - ▶ <http://www.ibm.com/xmlns/prod/websphere/monitoring/6.1.0/mm>
- Migration support for converting valid Monitor V6.0.2 models to V6.1
- Optionally backup V6.0.2 model before performing migration
- Support for headless migration by running migrate.bat against the V6.0.2 model outside of the Eclipse environment



6

Monitor model editor overview

© 2008 IBM Corporation

The need to migrate a monitor model is determined when the model is opened in the editor. On opening a monitor model that uses the version 6.0.2 value for the target namespace, you are prompted to optionally back up the V6.0.2 model before migration.

Migration can only be performed if the original model is syntactically valid. If the model is not valid, you are prompted to correct the model before the migration can be carried out. XML content assist is provided to help you create a well formed version 6.0.2 model. Once corrected, close and reopen the model to perform the migration.

Support is also provided for headless migration of V6.0.2 monitor models:

A batch file 'migrate.bat' is provided that can be run outside of an Eclipse environment, to migrate a V6.0.2 monitor model to V6.1.

Section

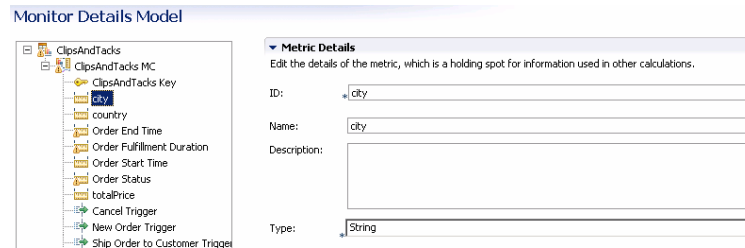
Usability enhancements

This section of the presentation reviews the enhancements to the usability of the user interface in the monitor model editor.

Usability enhancements

- Content assist enhancements
 - ▶ As text is typed options not beginning with the typed text are filtered out
 - ▶ Smart text replace
 - ▶ Tool tips for function help text and function arguments

- Fields that are required are marked with an *



There are several content assist enhancements. As text is typed, options not beginning with the typed text are filtered out. In the previous version, content assist inserts the complete text of the chosen option directly at the cursor position. In version 6.1 smart text replace is used to intelligently replace the existing text based on the cursor position within the target text. If the functions in the 'Functions' group of the content assist have more than one signature, all signatures will now be displayed. You still have the option to select the parent element instead of choosing a specific signature. Once the function is chosen, tool tip text will indicate the argument types that the function requires.

Also, on the model detail pages, fields that are required are marked with an asterisk.

Usability enhancements

- Direct expression editing in table cells
 - ▶ Content assist available at the cell level
 - ▶ Use of '...' button to launch dialogue expression editor now optional
- Icon shows when content assist is available
- Support for double clicking in tables to create new rows
- Drag and drop support for moving files to and from the project tree
 - ▶ Drag sources can be other file based Eclipse views or the Windows Explorer, avoiding explicit imports in many instances
 - ▶ Drag and drop of files between folders in the project tree will trigger refactoring support where necessary
- New check box allows you to specify that a value is required for a metric
- Support for copy / paste of monitor model elements

9

Monitor model editor overview

© 2008 IBM Corporation

Direct expression editing should significantly improve the speed with which simple expressions can be created for keys, metrics and outbound events. In version 6.0.2 it was necessary to launch a dialogue box to enter all expressions. Simple expressions can now be entered directly into the table cells, with content assist.

Also, where ever the content assist is available, an icon denotes it.

As a short cut to clicking the 'add' button for new rows, you can now double click on an open area of the table to create a new row.

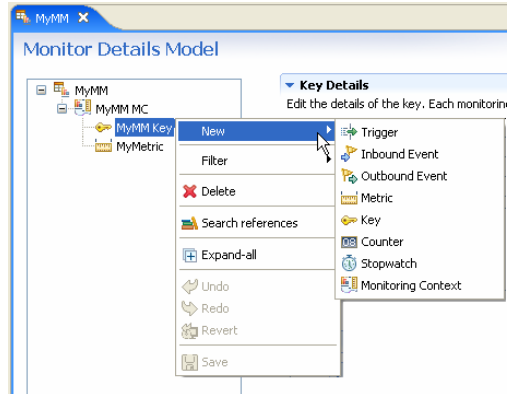
Drag and drop support for files to and from the project tree can be used for example to import files without doing an explicit export and import. Refactoring is invoked as required on these files.

A new check box allows you to specify that a value is required for a metric, so then the 'default value' field becomes required instead of optional.

You now can use copy and paste functions within a monitor model, but support for copy and paste of monitor model elements will not include any support to hook the pasted elements up to the new parent elements. Note that event groups cannot be copied and pasted.

Usability enhancements

- Support element creation from any level of the model tree
 - ▶ Previously, creation of monitor elements was only available using the pop-up menu when a monitoring context or other container element was selected
 - ▶ Now, elements can be created from the pop-up menu at any level
 - ▶ Newly created elements are placed in the closest parent container for the selected element



In this release you can create a monitor model element from any level of the model tree. So when you use the pop-up menu, elements can be created at any level. Based on the element that is highlighted in the tree, the newly created elements are placed in the closest parent container for the selected element.

Summary

- You have reviewed the environment, migration and usability in the WebSphere Business Monitor V6.1 monitor model editor



In summary, you have seen the environment for installing the monitor model editor, plus the migration story for this release. You have also seen the usability enhancements.

Feedback

Your feedback is valuable

You can help improve the quality of IBM Education Assistant content to better meet your needs by providing feedback.

- Did you find this module useful?
- Did it help you solve a problem or answer a question?
- Do you have suggestions for improvements?

Click to send e-mail feedback:

mailto:iea@us.ibm.com?subject=Feedback_about_WBMonitorV61_MME_Overview.ppt

This module is also available in PDF format at: ..\\WBMonitorV61_MME_Overview.pdf



You can help improve the quality of IBM Education Assistant content by providing feedback.

Trademarks, copyrights, and disclaimers

The following terms are trademarks or registered trademarks of International Business Machines Corporation in the United States, other countries, or both:

IBM Rational WebSphere

Rational is a trademark of International Business Machines Corporation and Rational Software Corporation in the United States, Other Countries, or both.

Windows, and the Windows logo are registered trademarks of Microsoft Corporation in the United States, other countries, or both.

Product data has been reviewed for accuracy as of the date of initial publication. Product data is subject to change without notice. This document could include technical inaccuracies or typographical errors. IBM may make improvements or changes in the products or programs described herein at any time without notice. Any statements regarding IBM's future direction and intent are subject to change or withdrawal without notice, and represent goals and objectives only. References in this document to IBM products, programs, or services does not imply that IBM intends to make such products, programs or services available in all countries in which IBM operates or does business. Any reference to an IBM Program Product in this document is not intended to state or imply that only that program product may be used. Any functionally equivalent program, that does not infringe IBM's intellectual property rights, may be used instead.

Information is provided "AS IS" without warranty of any kind. THE INFORMATION PROVIDED IN THIS DOCUMENT IS DISTRIBUTED "AS IS" WITHOUT ANY WARRANTY, EITHER EXPRESS OR IMPLIED. IBM EXPRESSLY DISCLAIMS ANY WARRANTIES OF MERCHANTABILITY, FITNESS FOR A PARTICULAR PURPOSE OR NONINFRINGEMENT. IBM shall have no responsibility to update this information. IBM products are warranted, if at all, according to the terms and conditions of the agreements (for example, IBM Customer Agreement, Statement of Limited Warranty, International Program License Agreement, etc.) under which they are provided. Information concerning non-IBM products was obtained from the suppliers of those products, their published announcements or other publicly available sources. IBM has not tested those products in connection with this publication and cannot confirm the accuracy of performance, compatibility or any other claims related to non-IBM products.

IBM makes no representations or warranties, express or implied, regarding non-IBM products and services.

The provision of the information contained herein is not intended to, and does not, grant any right or license under any IBM patents or copyrights. Inquiries regarding patent or copyright licenses should be made, in writing, to:

IBM Director of Licensing
IBM Corporation
North Castle Drive
Armonk, NY 10504-1785
U.S.A.

Performance is based on measurements and projections using standard IBM benchmarks in a controlled environment. All customer examples described are presented as illustrations of how those customers have used IBM products and the results they may have achieved. The actual throughput or performance that any user will experience will vary depending upon considerations such as the amount of multiprogramming in the user's job stream, the I/O configuration, the storage configuration, and the workload processed. Therefore, no assurance can be given that an individual user will achieve throughput or performance improvements equivalent to the ratios stated here.

© Copyright International Business Machines Corporation 2008. All rights reserved.

Note to U.S. Government Users - Documentation related to restricted rights-Use, duplication or disclosure is subject to restrictions set forth in GSA ADP Schedule Contract and IBM Corp.