

WebSphere Business Monitor Development V6.1 Toolkit installation

What this exercise is about	2
Operating system prerequisites	2
Lab requirements and software prerequisites.....	2
What you should be able to do?	2
Exercise instructions	3
Introduction	4
Part 1: Preparing for the Monitor Tool Kit V6.1 Common Launchpad	6
Part 2: Installing Monitor Toolkit V6.1 on IBM Rational Application Developer 7.0.0.5	7
Part 3: Installing Monitor Toolkit V6.1 on WebSphere Integration Developer V6.1	11
Task 1: Installing Rational Application Developer V7.0.0.5	15
Activate the license and upgrade Rational Application Developer	23
Update WebSphere Application Server V6.1.0.2 to V6.1.0.13	29
Task 2: Installing WebSphere Integration Developer V6.1	32
Updating the WebSphere Integration Developer V6.1 with <i>iFix001</i>	37
Appendix 1: Installing the Update Installer for WebSphere Software	42
Appendix 2: Uninstalling the Monitor Development Toolkit V6.1	45
Appendix 3: Troubleshooting	51

What this exercise is about

The objective of this lab is to provide step by step instructions for installing WebSphere Business Monitor Development Toolkit V6.1 on Rational Application Developer V7.0 or WebSphere Integration Developer V6.1.

Operating system prerequisites

- Windows Server 2003 Standard SP1
- Windows Server 2003 Enterprise SP1
- Windows XP Professional SP2
- Windows Vista Business
- Windows Vista Ultimate

Lab requirements and software prerequisites

List of software required for the student to complete the lab:

- IBM Installation Manager V1.1.0.1
- Prerequisites for installing the Monitor Toolkit:
 - Rational Application Developer V7.0.0.5 with WebSphere Application Server V6.1.0.13
 - (or) WebSphere Integration Developer V6.1 with WebSphere Process Server V6.1
- WebSphere Business Monitor Development Toolkit V6.1

What you should be able to do?

At the end of this lab you should be able to:

- Install IBM Installation Manager V1.1.0.1
- Install Rational Application Developer V7.0
 - Update Rational Application Developer 7.0 to version 7.0.0.5
 - Update embedded WebSphere Application Server from V6.1.0.2 to V6.1.0.13
- Install WebSphere Integration Developer V6.1 with WebSphere Process Server V6.1
 - Update WebSphere Integration Developer with an interim fix (iFix001)
- Install WebSphere Business Monitor Development Toolkit V6.1 on Rational Application Developer or WebSphere Integration Developer

Exercise instructions

Some instructions in this lab are Windows[®] operating-system specific. If you plan on running the lab on an operating-system other than Windows, you will need to run the appropriate commands, and use appropriate files (.sh or .bat) for your operating system. The directory locations are specified in the lab instructions using symbolic references, as follows:

Reference variable	Windows location	AIX [®] /UNIX [®] location
<RAD_HOME>	C:\IBM\SDP70	
<WAS_HOME>	<RAD_HOME>\runtimes\base_v61	
<WID_HOME>	C:\IBM\WID61	
<WPS_HOME>	<WID_HOME>\runtimes\bi_v61	
<WBM_PROFILE_HOME>	<WAS_HOME>\profiles\WBMonSrv	
	<WPS_HOME>\pf\WBMonSrv_wps	
<WAS_ABX_HOME>	<WBM_PROFILE_HOME>\Alphablox_server1	
<WPS_ABX_HOME>	<WBM_PROFILE_HOME>\Alphablox_server1	

Windows users' note: When directory locations are passed as parameters to a Java[™] program such as EJBdeploy or wsadmin, it is necessary to replace the backslashes with forward slashes to follow the Java convention.

Introduction

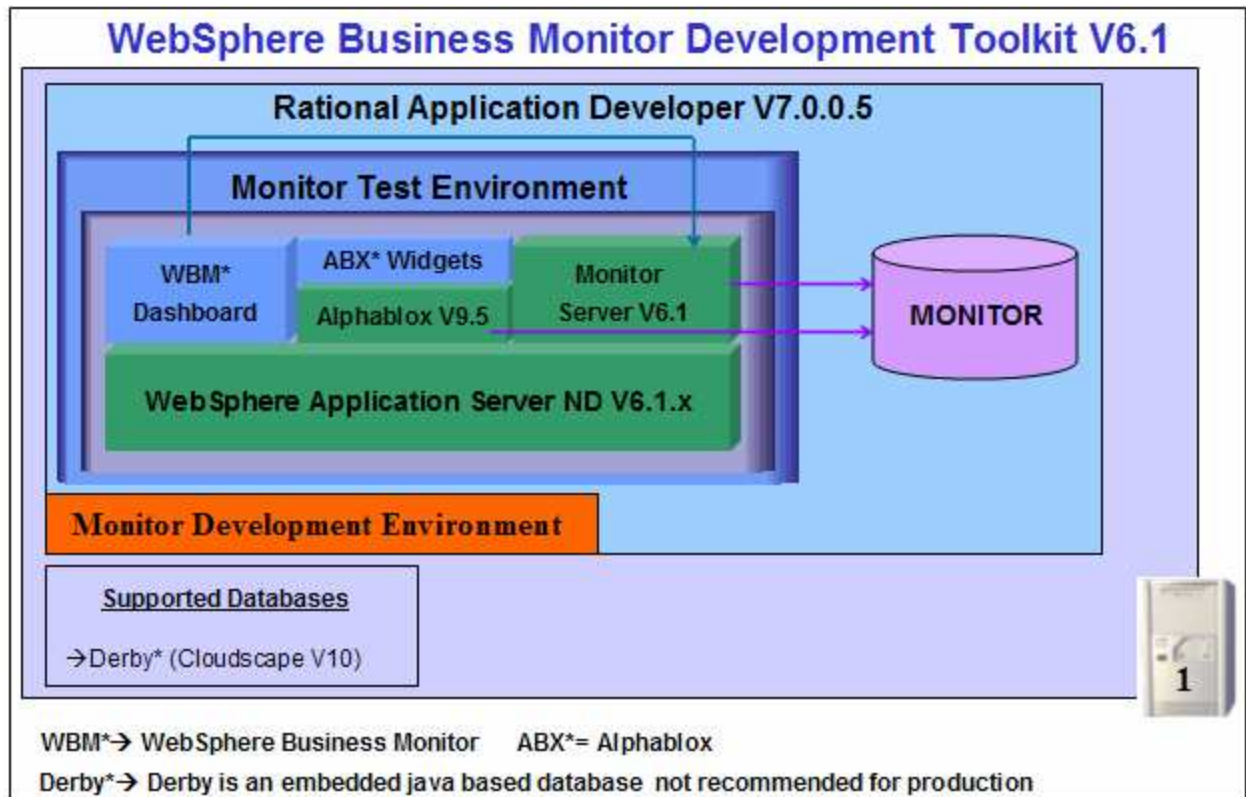
WebSphere Business Monitor Development Toolkit V6.1 enhances the development experience by providing editing, code generation and unit test capability.

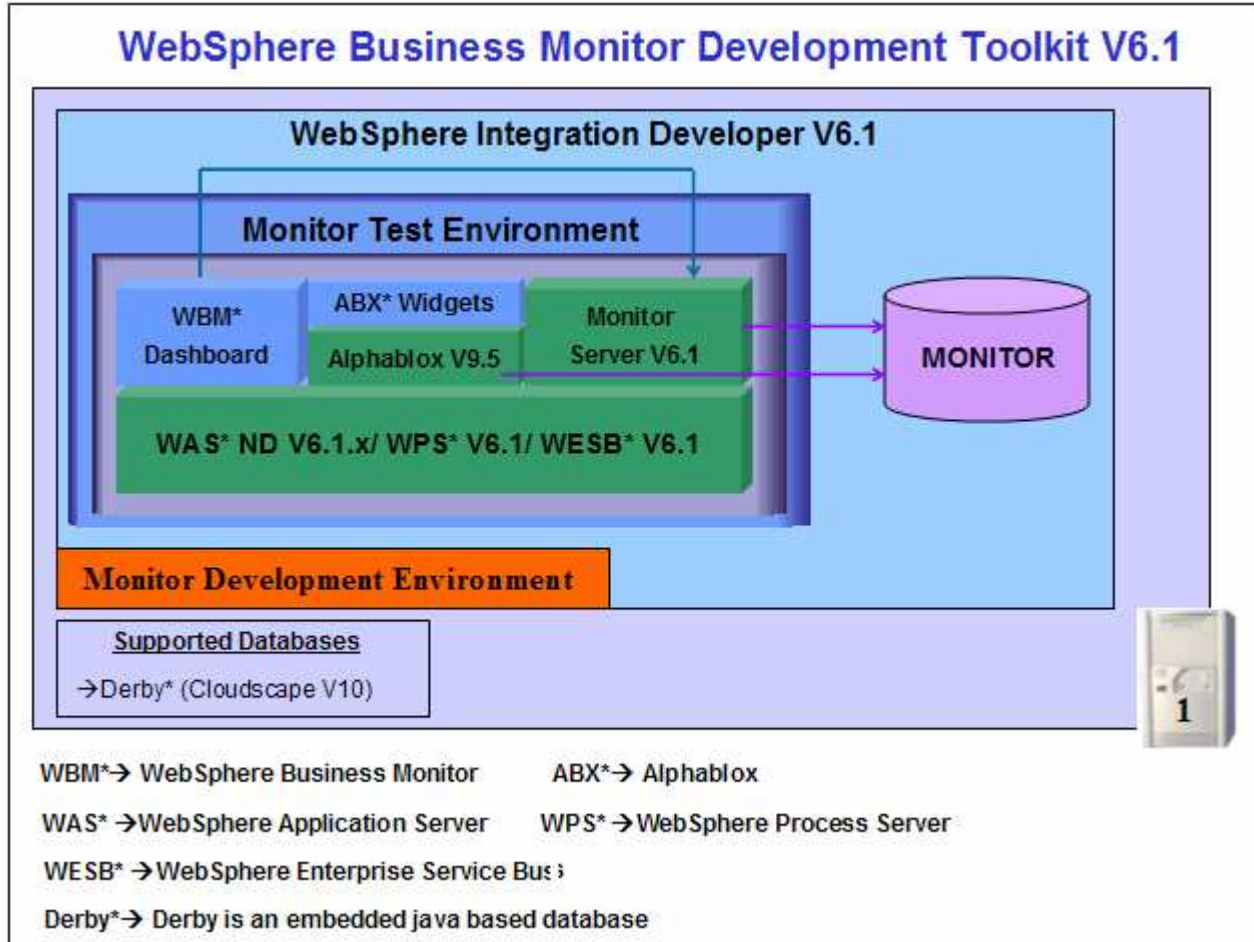
WebSphere Business Monitor Development Toolkit V6.1 provides a separate launchpad based on Common Launchpad program which invokes the “IBM Installation Manager V1.1 to handle the product installation, un-installation and updates. The Common Launchpad provides initial help in the form of a readme file and installation guide.

The Monitor Toolkit consists of two major components. A **Monitor Development Environment**, which includes Monitor Model Editor, Monitor Model Editor documentation and Monitor Application Descriptor components that allows you to create the monitor model for use with WebSphere Business Monitor V6.1. Secondly a **Monitor Test Environment** which is a fully functional Monitor Server including Action Manager, light weight Web dashboard including Alphablox Web dashboard views using embedded Derby as the database environment, allowing you to test the developed monitor model within the development environment before deploying it to the production environment.

The WebSphere Business Monitor Development Toolkit V6.1 offering will be packaged as an extended offering that extends from Rational Application Developer and WebSphere Integration Developer. It can be installed on top of Rational Application Developer V7.0.0.5 and WebSphere Integration Developer V6.1.

IBM Installation Manager V1.1 considers Monitor Development Environment as a mandatory feature, and the Monitor Test Environment as an optional feature. The Monitor Test Environment can be optionally installed provided the WebSphere Application Server V6.1, WebSphere Process Server V6.1 or a WebSphere Enterprise Service Bus test environment is installed and their version levels support the WebSphere Business Monitor V6.1 installation. The following diagrams depict the Monitor Toolkit environment:





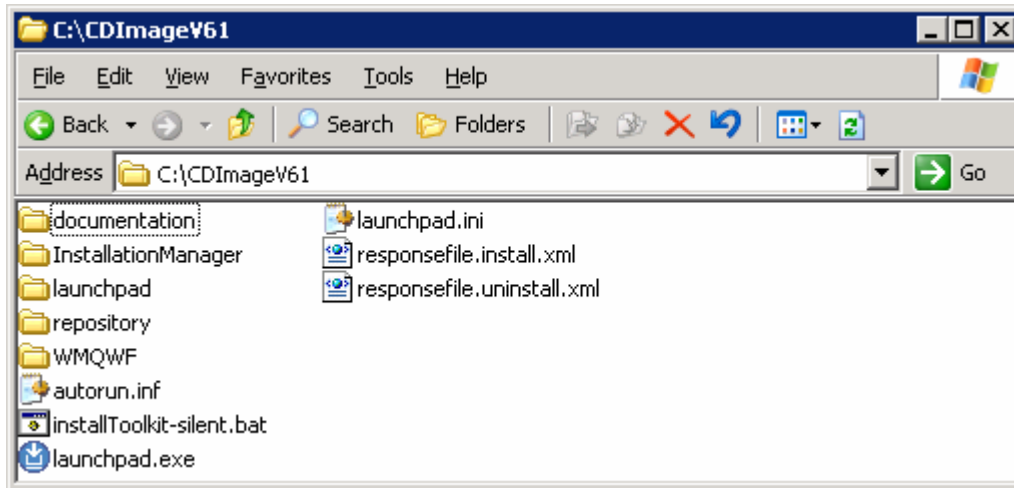
Part 1: Preparing for the Monitor Tool Kit V6.1 Common Launchpad

In this part of the lab, the required software will be obtained and extracted, creating the correct on-disk structure for the WebSphere Business Monitor Development Toolkit Common Launchpad to run.

- ___ 1. The following are the installation files needed to install the Monitor V6.1 Toolkit

Product Name	File Name
WebSphere Business Monitor V6.1 Development Toolkit for Windows	C1872EN.zip

- ___ 2. Obtain the Monitor Toolkit software and extract in such a way to create the correct on-disk structure for the Launchpad to run
- ___ 3. Extract the Monitor Toolkit archive to a directory (for example **C:\CDImageV61**) and confirm that the directories and files are extracted correctly; it should appear similar to the picture below:



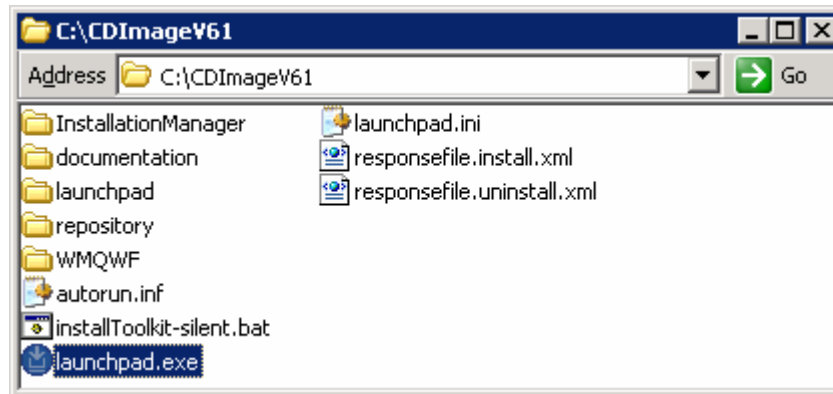
Part 2: Installing Monitor Toolkit V6.1 on IBM Rational Application Developer 7.0.0.5

This part of the lab shows installing the WebSphere Business Monitor Development Toolkit V6.1 using the Common Launchpad program on the Rational Application Developer V7.0.0.5 with WebSphere Application Server V6.1.0.13 as the test environment. The Common Launchpad program uses IBM Installation Manager V1.1 to install the Monitor Toolkit components such as the **Monitor Test Environment** and **Monitor Development Environment** which includes the **Monitor Model Editor**.

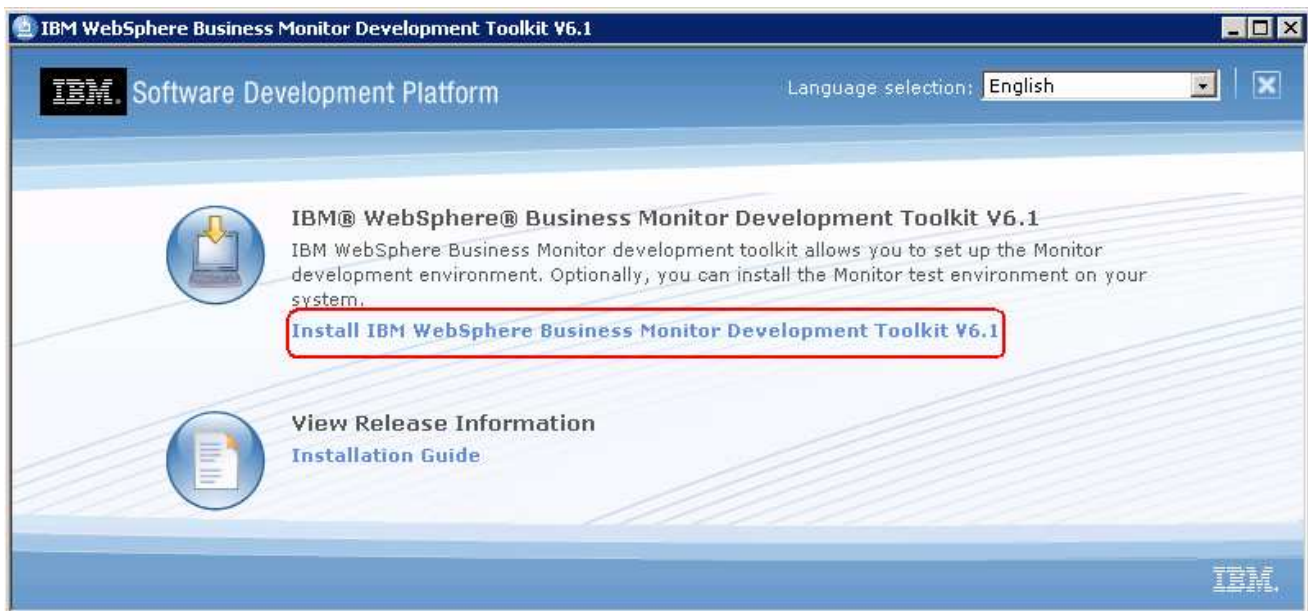
Prerequisite: - Before proceeding further, ensure that the Rational Application Developer V7.0 is installed and upgraded to Version 7.0.0.5. Also ensure that the WebSphere Application Server profile is upgraded to Version 6.1.0.13. The instructions for installing and upgrading Rational Application Developer V7.0 are available at the end of this document at "[Task1: Installing Rational Application Developer V7.0](#)"

Follow the instructions below to complete the WebSphere Business Monitor Development Toolkit V6.1 installation:

1. Navigate to the directory where the correct on-disk structure for the installation image was created

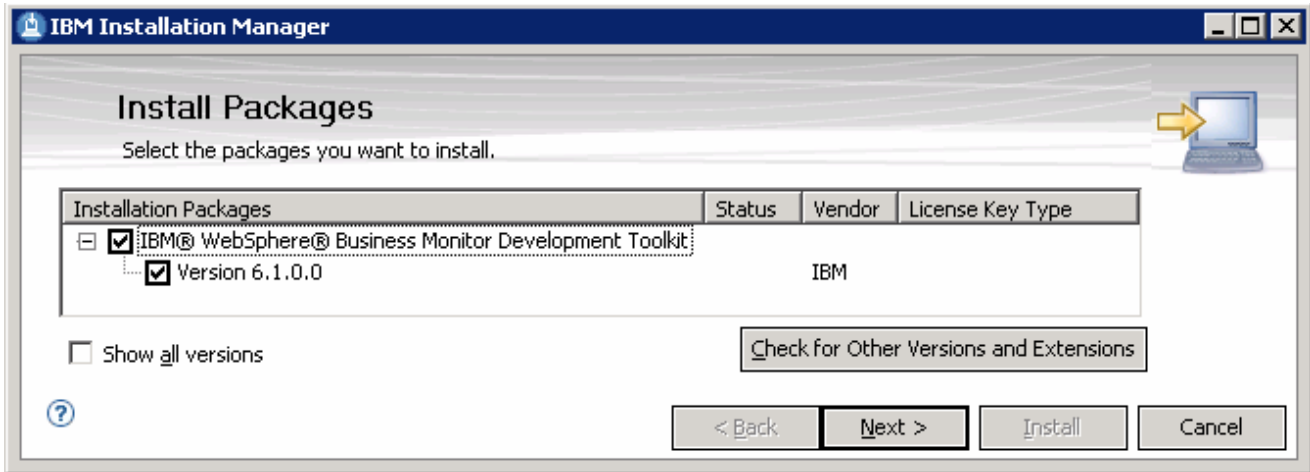


2. Double-click **launchpad.exe** to launch the Common Launchpad

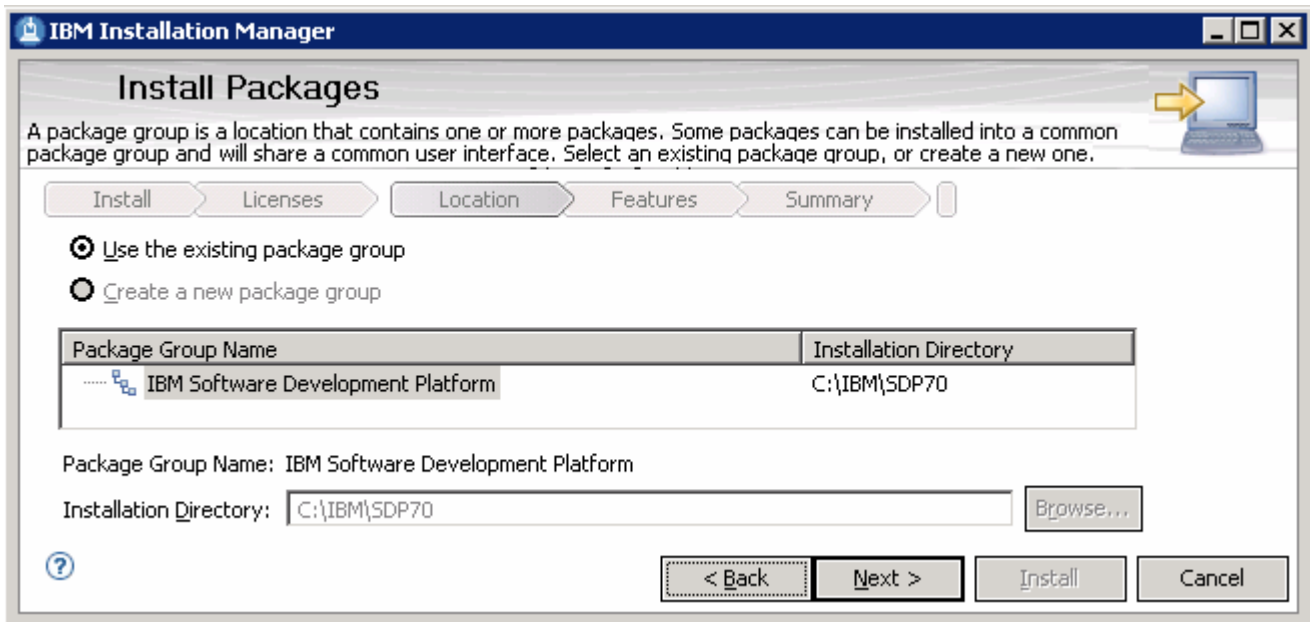


IBM WEBSHERE BUSINESS MONITOR V6.1 – LAB EXERCISE

3. Click on 'Install IBM WebSphere Business Monitor Development Toolkit V6.1'. This action launches the Installation Manager V1.1 as shown below:

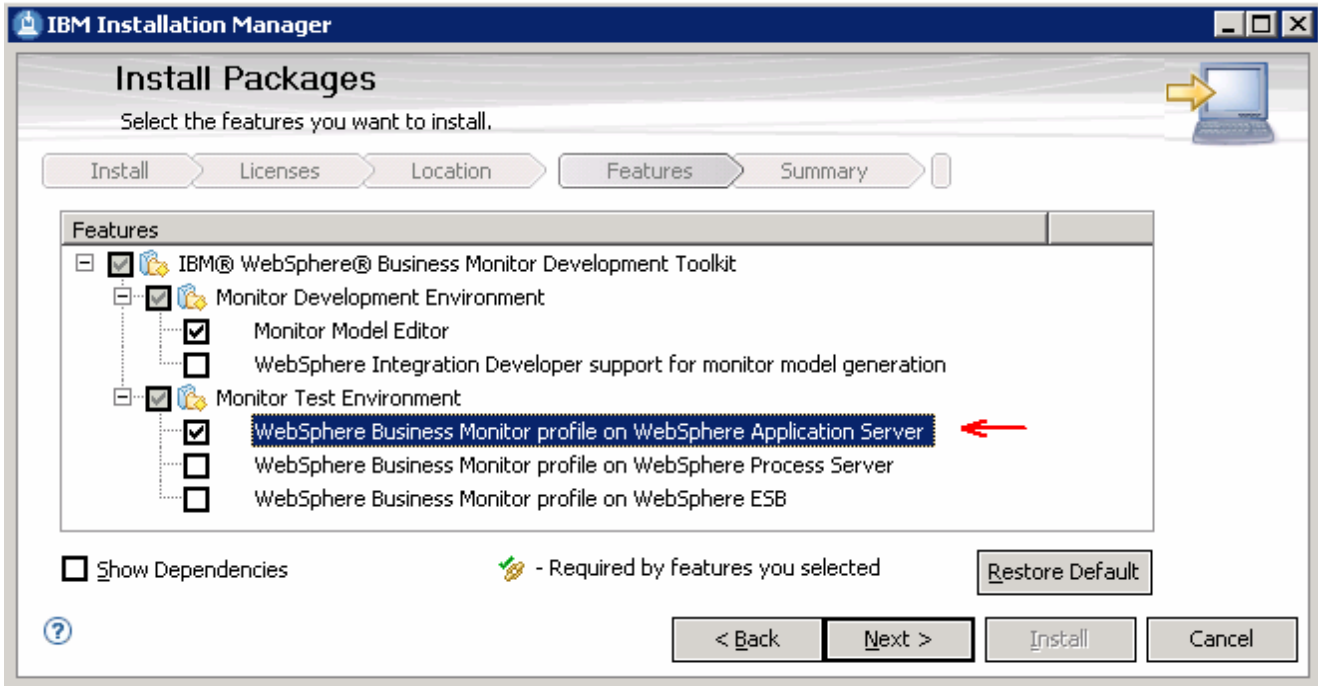


4. Ensure the check boxes next to **IBM WebSphere Business Monitor Development Toolkit (Version 6.1.0.0)** is selected and click **Next**
5. In the following panel, read the license agreements. If you agree to the terms, select the radio button next to **"I accept the terms in the license agreements"** and Click **Next**
6. In the following panel, select the **IBM Software Development Platform** as the **Package Group Name**



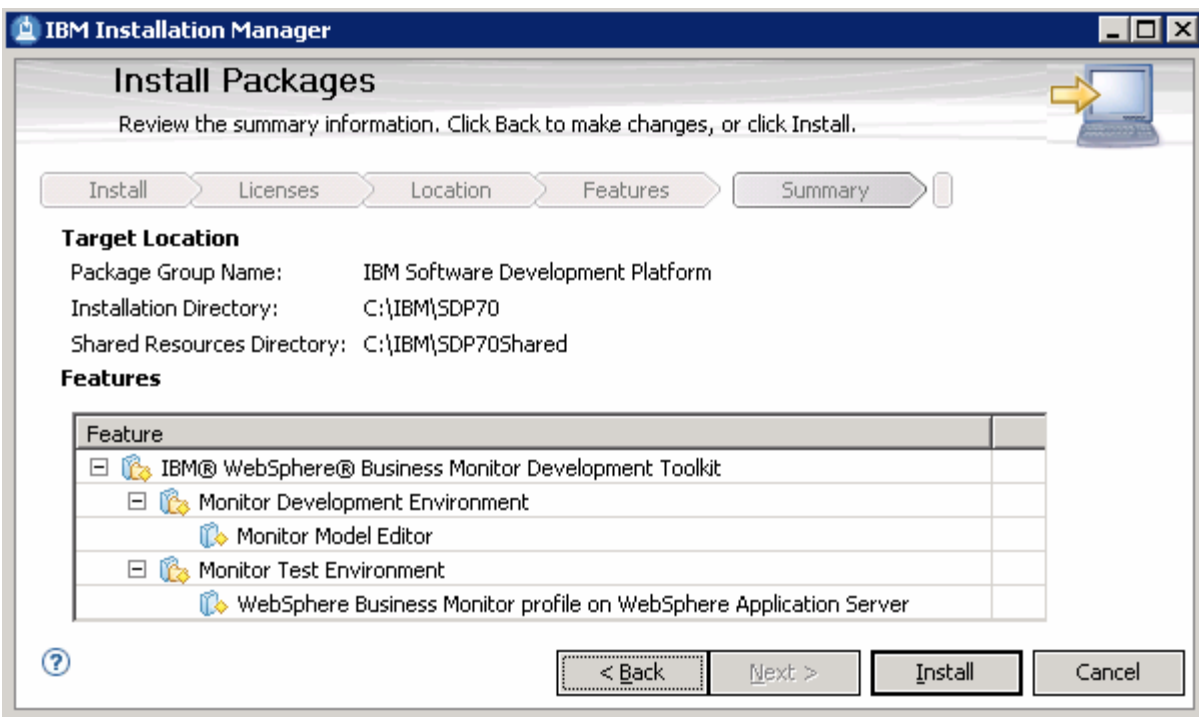
7. Click **Next**
8. In the following panel, ensure the check boxes next to **Monitor Model Editor** (mandatory) and **WebSphere Business Monitor profile on WebSphere Application Server** are selected

IBM WEBSHERE BUSINESS MONITOR V6.1 – LAB EXERCISE



___ 9. Click **Next**

___ 10. Review the installation summary in the following panel



___ 11. Click **Install**. The **WebSphere Business Monitor Development Toolkit V6.1** installation progresses

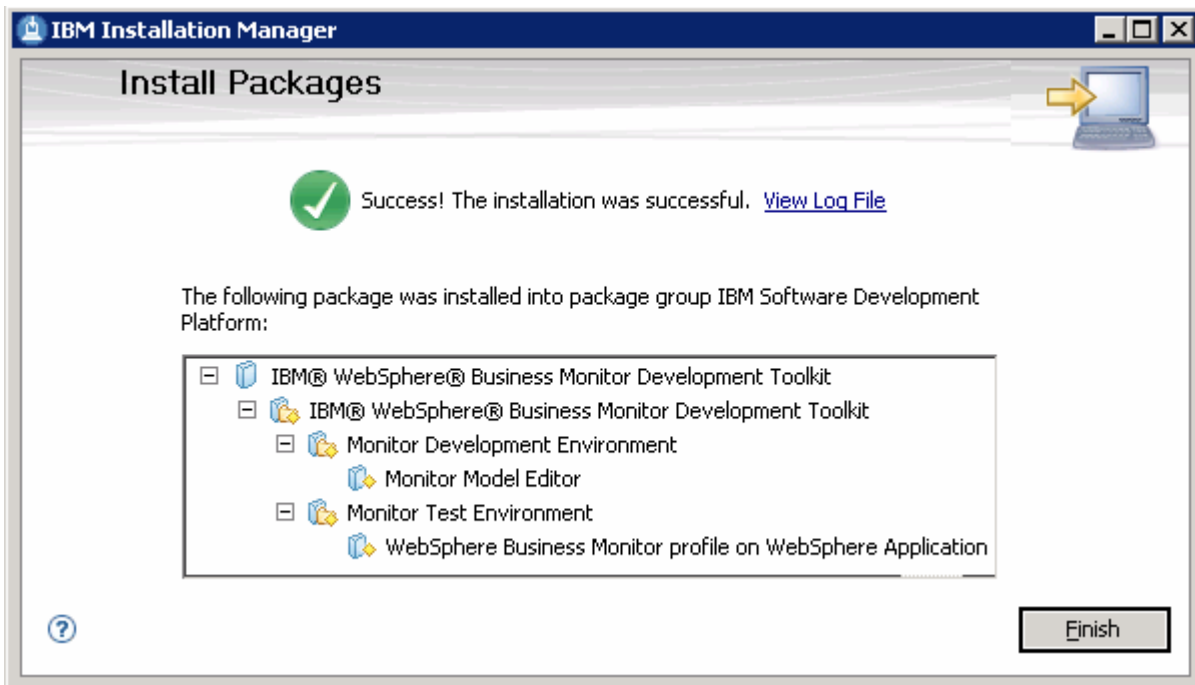
IBM WEBSHERE BUSINESS MONITOR V6.1 – LAB EXERCISE

Installing. [(1%) Installing Monitor test environment]



Pause Download Cancel

___ 12. Once the installation is complete, review the installation status summary



___ 13. Click **Finish**

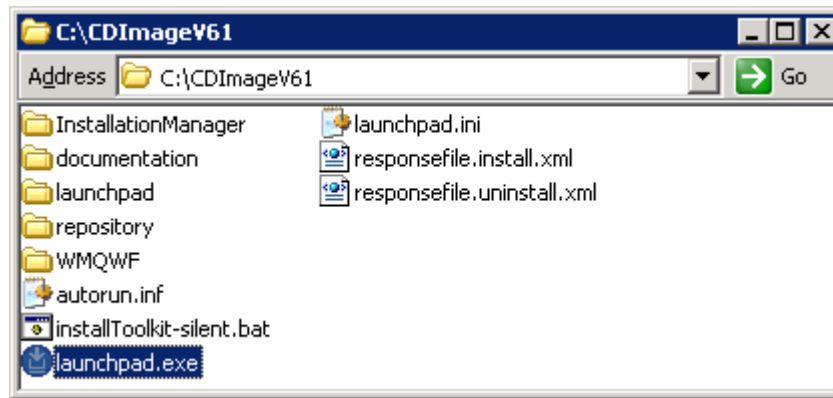
Part 3: Installing Monitor Toolkit V6.1 on WebSphere Integration Developer V6.1 Developer V6.1

This part of the lab shows installing the WebSphere Business Monitor Development Toolkit V6.1 using the Common Launchpad program on the WebSphere Integration Developer V6.1 with WebSphere Process Server V6.1 profile. The Common Launchpad program uses IBM Installation Manager V1.1 to install the Monitor Toolkit components such as the **Monitor Test Environment** and **Monitor Development Environment** which includes the **Monitor Model Editor**.

Prerequisite: - Before proceeding further, ensure that the WebSphere Integration Developer V6.1 is installed. Also ensure that the WebSphere Process Server V6.1 profile is installed. The instructions for installing WebSphere Integration Developer V6.1 are available at the end of this document at "[Task2: Installing WebSphere Integration Developer V6.1](#)"

Follow the instructions below to complete the WebSphere Business Monitor Development Toolkit V6.1:

1. Navigate to the directory where the correct on-disk structure for the installation image was created



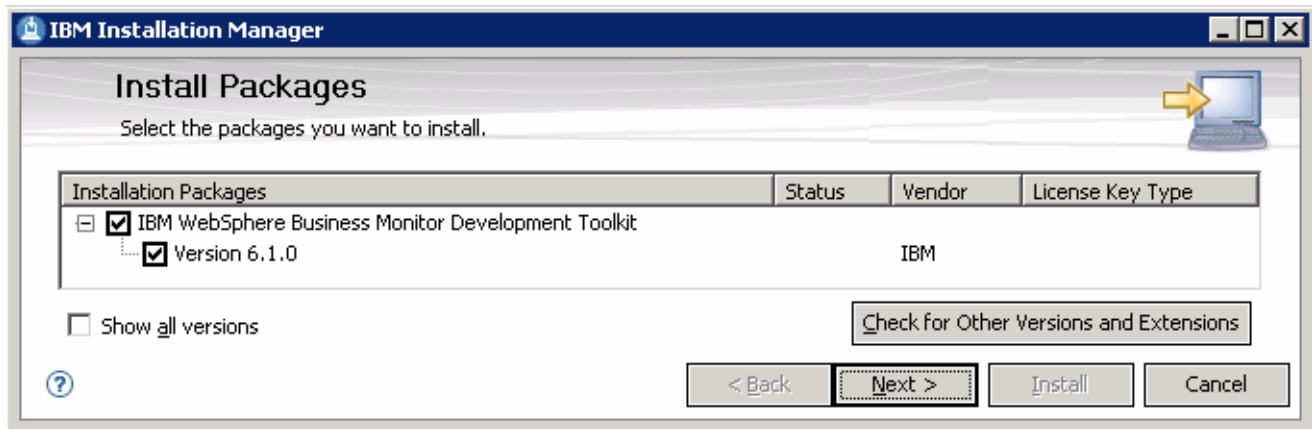
2. Double-click **launchpad.exe** to launch the Common Launchpad



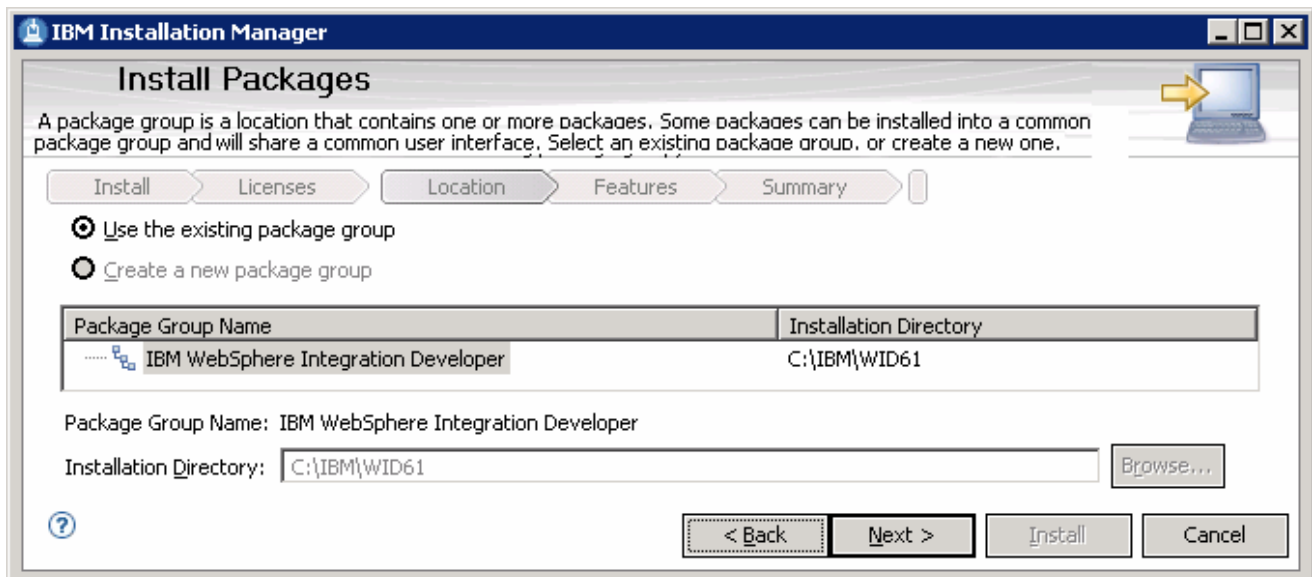
3. Click on '**Install IBM WebSphere Business Monitor Development Toolkit V6.1**'

IBM WEBSHERE BUSINESS MONITOR V6.1 – LAB EXERCISE

4. This launches the IBM Installation Manager V1.1 installation wizard. Ensure that the check box next to **IBM WebSphere Business Monitor Development Toolkit (Version 6.1.0)** is selected

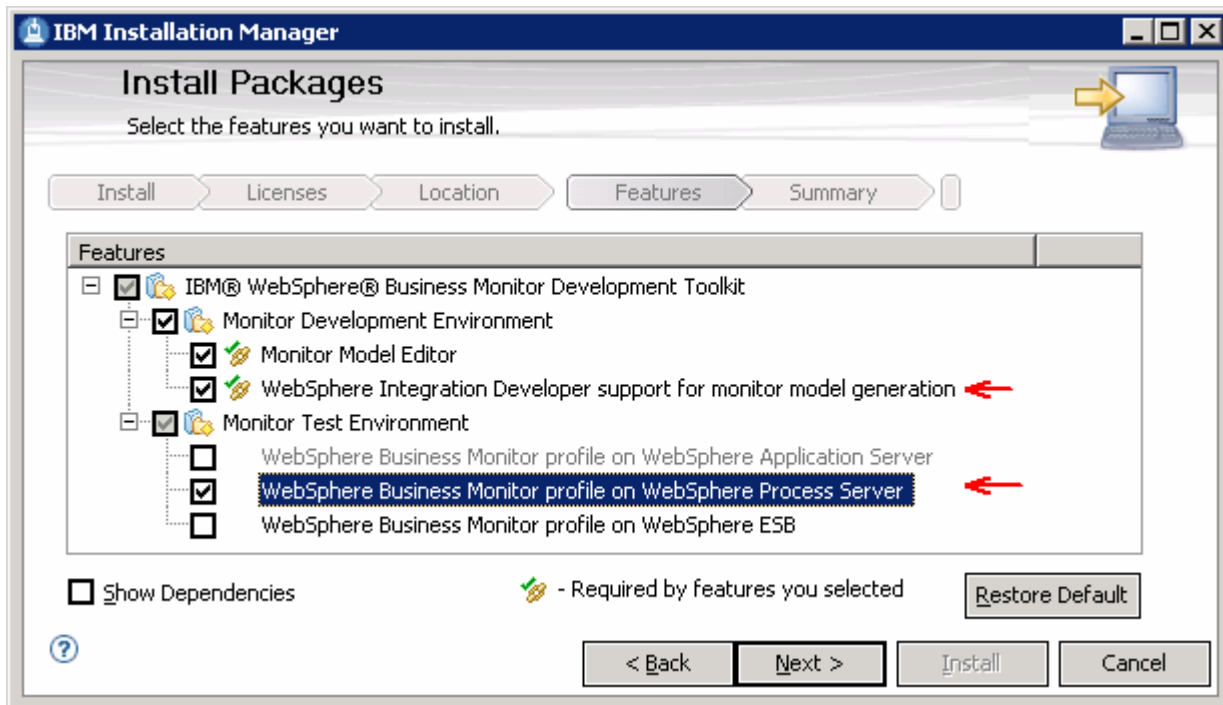


5. Click **Next**
6. In the following panel, read the license agreements. If you agree to the terms, select the radio button next to **"I accept the terms in the license agreements"** and Click **Next**
7. In the following panel, select the **IBM Software Development Platform** as the **Package Group Name**

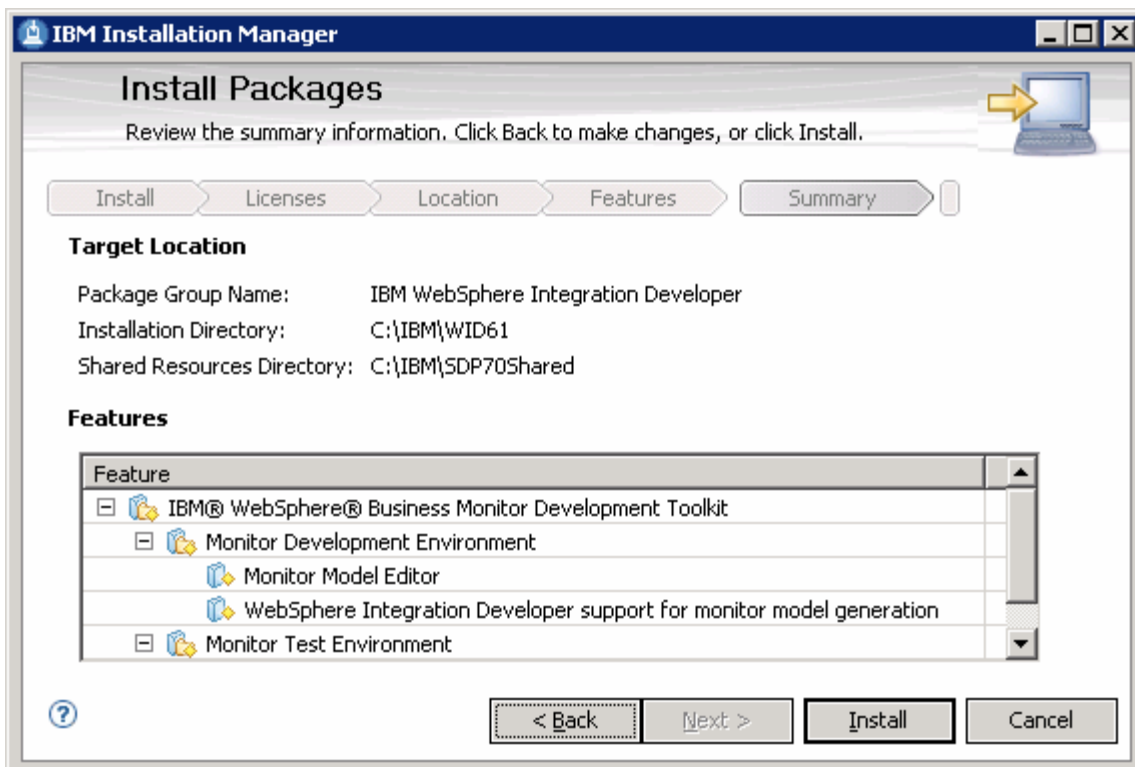


8. Click **Next**
9. In the following panel, select the check boxes next to the following features:
- a. **Monitor Development Environment**
 - **Monitor Model Editor (Mandatory)**
 - **WebSphere Integration Developer support for monitor model generation**
 - b. **WebSphere Business Monitor profile on WebSphere Process Server**

IBM WEBSHERE BUSINESS MONITOR V6.1 – LAB EXERCISE



- ___ 10. Click **Next**
- ___ 11. Review the installation summary in the following panel

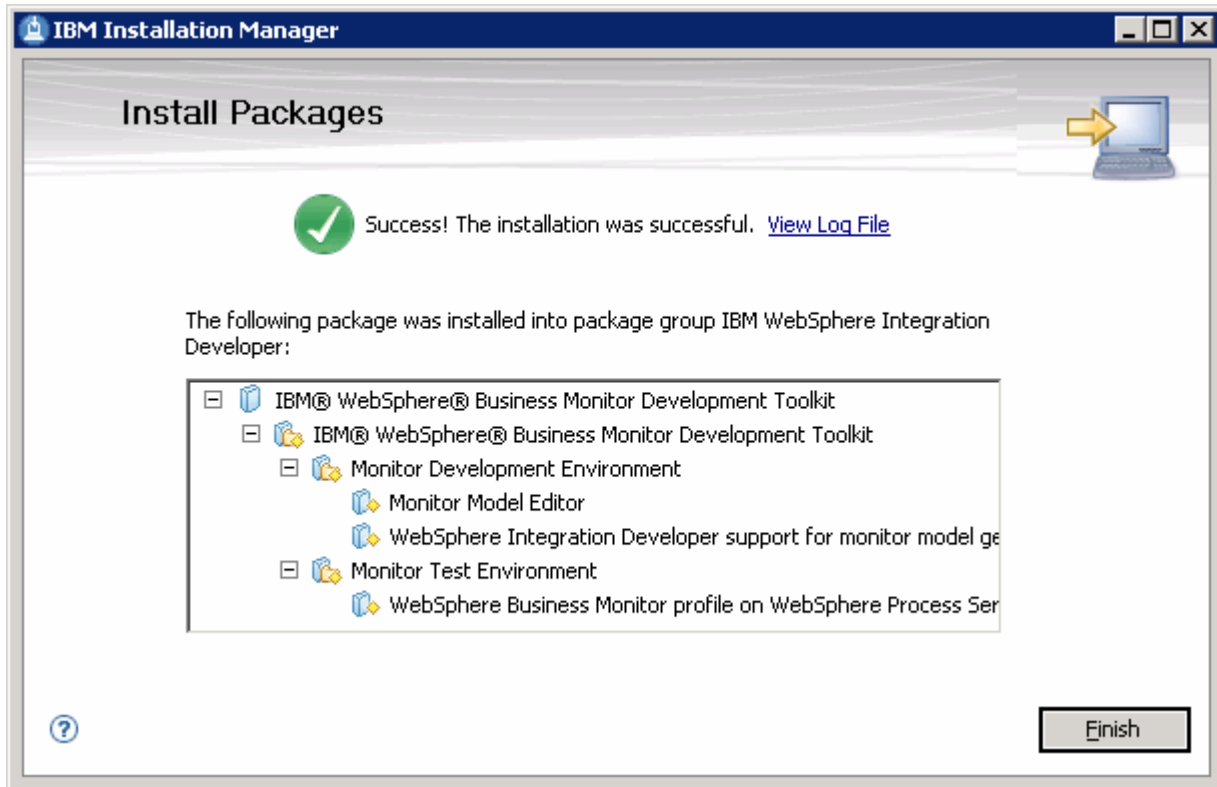


- ___ 12. Click **Install** to continue with the installation. **The WebSphere Business Monitor Development Toolkit V6.1** installation progresses

IBM WEBSHERE BUSINESS MONITOR V6.1 – LAB EXERCISE

Installing. [(1%) Installing Monitor test environment]

Pause Download Cancel



____ 13. Click **Finish** when the installation is complete

Task 1: Installing Rational Application Developer V7.0.0.5

This part of the lab provides step-by-step instructions for installing the Rational Application Developer V7.0 using the Common Launchpad. When you choose to install the Rational Application Developer, the Common launchpad automatically installs IBM Installation Manager V1.0 if not already installed. Also, the Rational Application Developer V7.0 will be updated to version 7.0.0.5. The base Rational Application Developer V7.0 installs a WebSphere Application Server V6.1.0.2 which is not an accepted level for installing WebSphere Business Monitor V6.1. You will manually update the WebSphere Application Server V6.1.0.2 with a fix pack 13 using the WebSphere Update Installer.

- ___ 1. The following are the installation files needed to install the Rational Application Developer V7.0

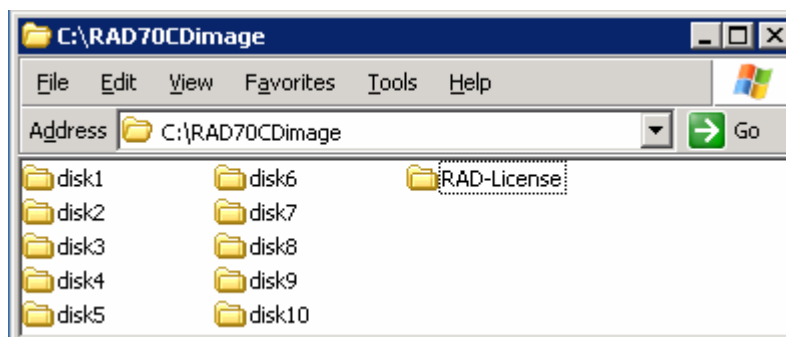
RAD_v7.0_Part_1.zip	RAD_v7.0_Part_6.zip
RAD_v7.0_Part_2.zip	RAD_v7.0_Part_7.zip
RAD_v7.0_Part_3.zip	RAD_v7.0_Part_8.zip
RAD_v7.0_Part_4.zip	RAD_v7.0_Part_9.zip
RAD_v7.0_Part_5.zip	RAD_v7.0_Part_10.zip
RAD_v7.0_Activation_Kit.zip	

- ___ 2. WebSphere Application Server fix pack 13 and Update Installer

- 6.1.0-WS-WAS-WinX32-FP0000013.pak
- download.updii.61013.windows.ia32.zip

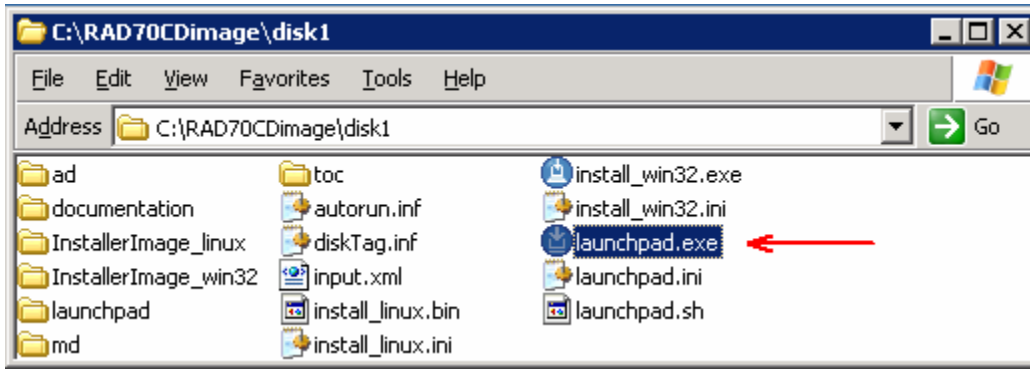
- ___ 3. Obtain the Rational Application Developer V7.0 software and extract in such a way to create the correct on-disk structure for the Common Launchpad to run without any interruption during the installation.

- ___ 4. Extract all the Rational Application Developer V7.0 installation archives to a directory (for example **C:\RAD70CDimage**) and confirm that the directories and files are extracted correctly; it should appear similar to the picture below:



- ___ 5. Navigate to the **disk1** directory

IBM WEBSPHERE BUSINESS MONITOR V6.1 – LAB EXERCISE



___ 6. Double click **launchpad.exe** to run the Common Launchpad



___ 7. On the Common Launchpad, click **Install IBM Rational Application Developer V7.0** link

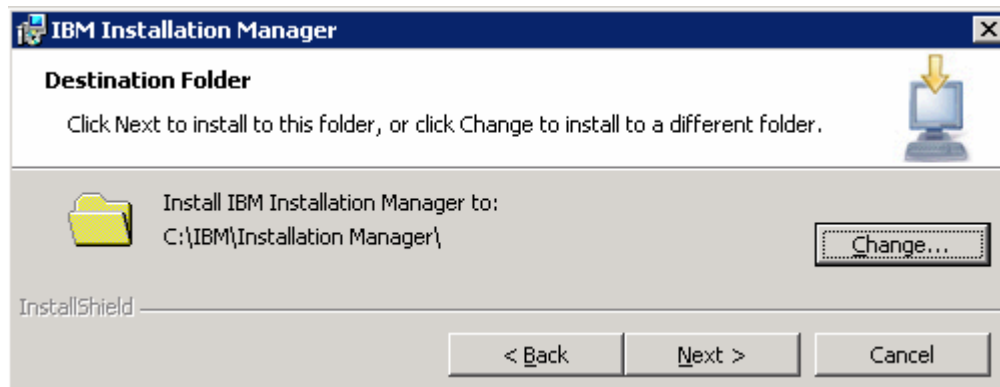
___ 8. The InstallShield Wizard for IBM Installation Manager V1.0 is launched

Note: The InstallShield Wizard for IBM Installation Manager V1.0 is launched if it is not installed at this time. Follow the instructions below to install the IBM Installation Manager V1.0

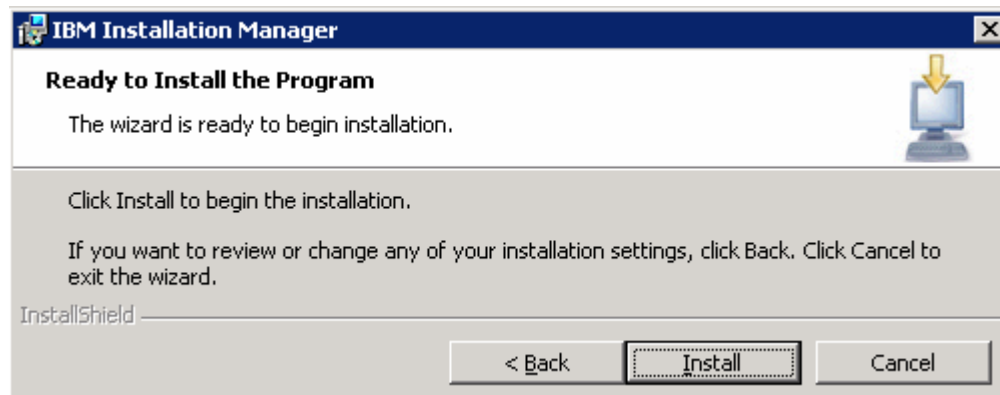
IBM WEBSHERE BUSINESS MONITOR V6.1 – LAB EXERCISE



- ___ 9. Read the instructions carefully on the welcome panel and click **Next**
- ___ 10. In the following panel, read the license agreement. If you agree to the terms, select the radio button next to **"I accept the terms in the license agreement"** and Click **Next**
- ___ 11. In the following panel, click the **Change** button to modify the default **"Install IBM Installation Manager to:"**, location to **C:\IBM\Installation Manager**

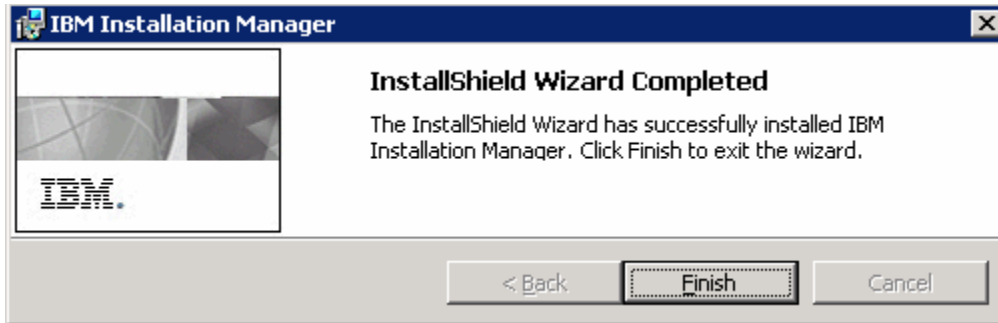


- ___ 12. Click **Next**
- ___ 13. The following panel gives an opportunity to review or change any installation settings. Click the **Back** button if you need to change the settings



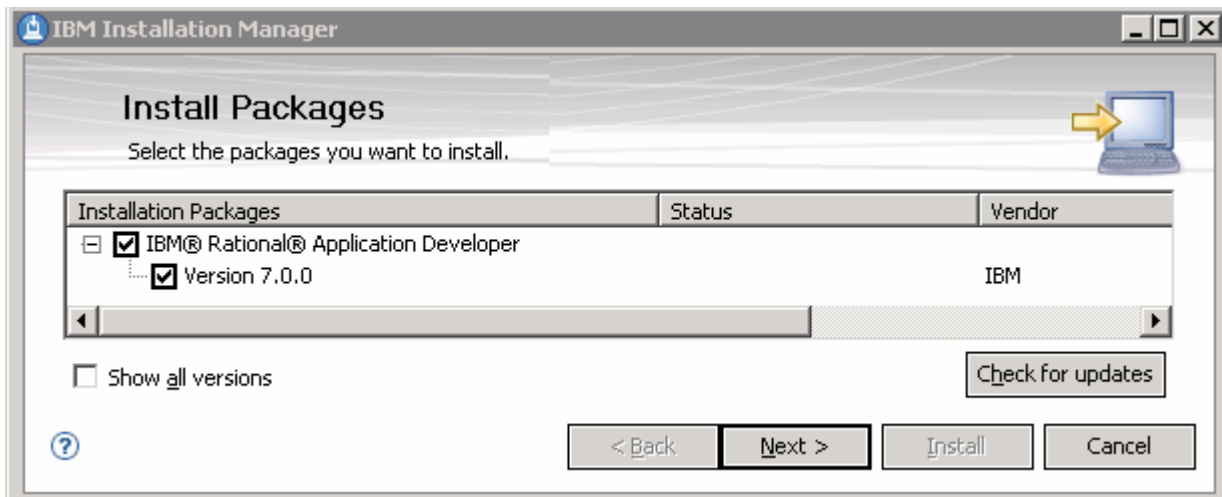
IBM WEBSHERE BUSINESS MONITOR V6.1 – LAB EXERCISE

- ___ 14. Click **Install** to continue with the installation. The IBM Installation Manager V1.0 installation progresses and takes a few seconds to install.
- ___ 15. Read the installation status summary, once the installation is complete



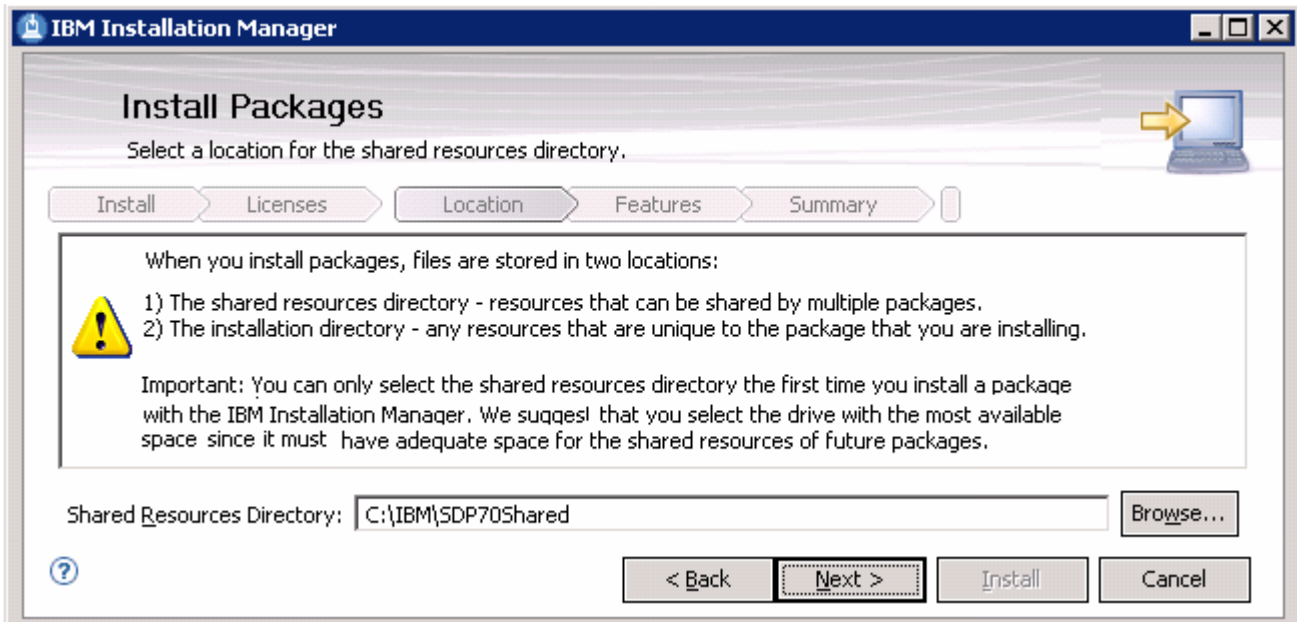
- ___ 16. Click **Finish**
- ___ 17. The IBM Installation Manager V1.0 is launched as shown below:

Note: You can always launch the IBM Installation Manger from Start → Programs → IBM Installation Manager → IBM Installation Manager.



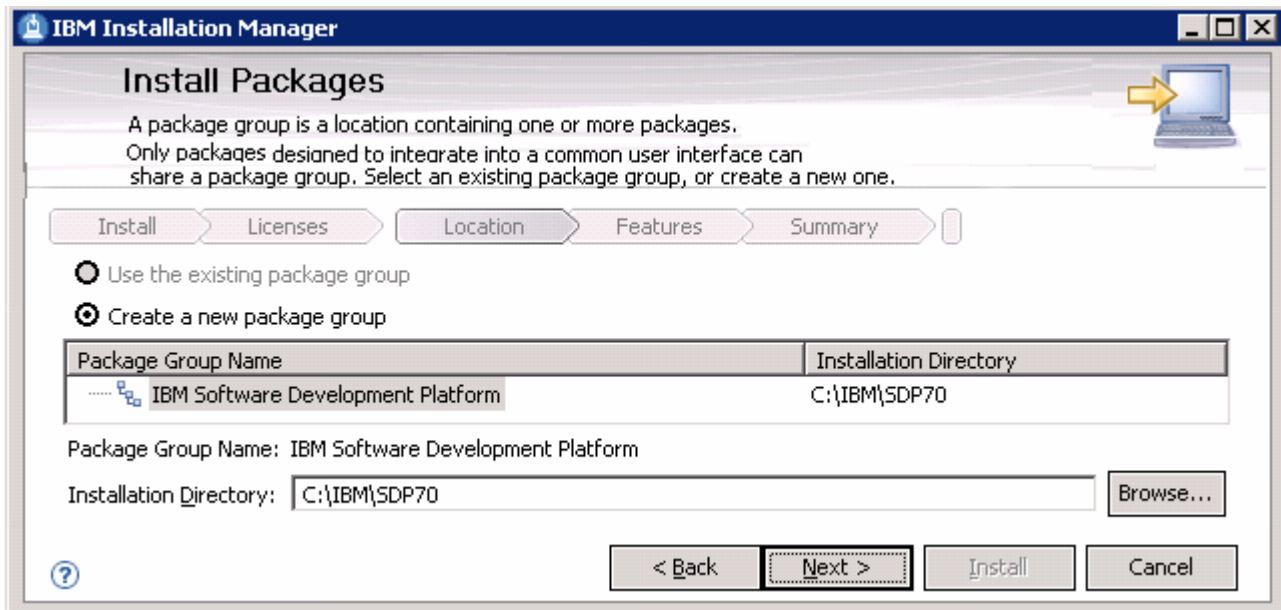
- ___ 18. Ensure the check box next to **IBM Rational Application Developer (Version 7.0.0)** is selected and click **Next**
- ___ 19. In the following panel, read the license agreements. If you agree to the terms, select the radio button next to **“I accept the terms in the license agreements”** and Click **Next**
- ___ 20. In the following panel, read the instructions carefully and click the **Browse** button to set a different shared resources directory to **C:\IBM\SDP70Shared**

IBM WEBSHERE BUSINESS MONITOR V6.1 – LAB EXERCISE



___ 21. Click **Next**

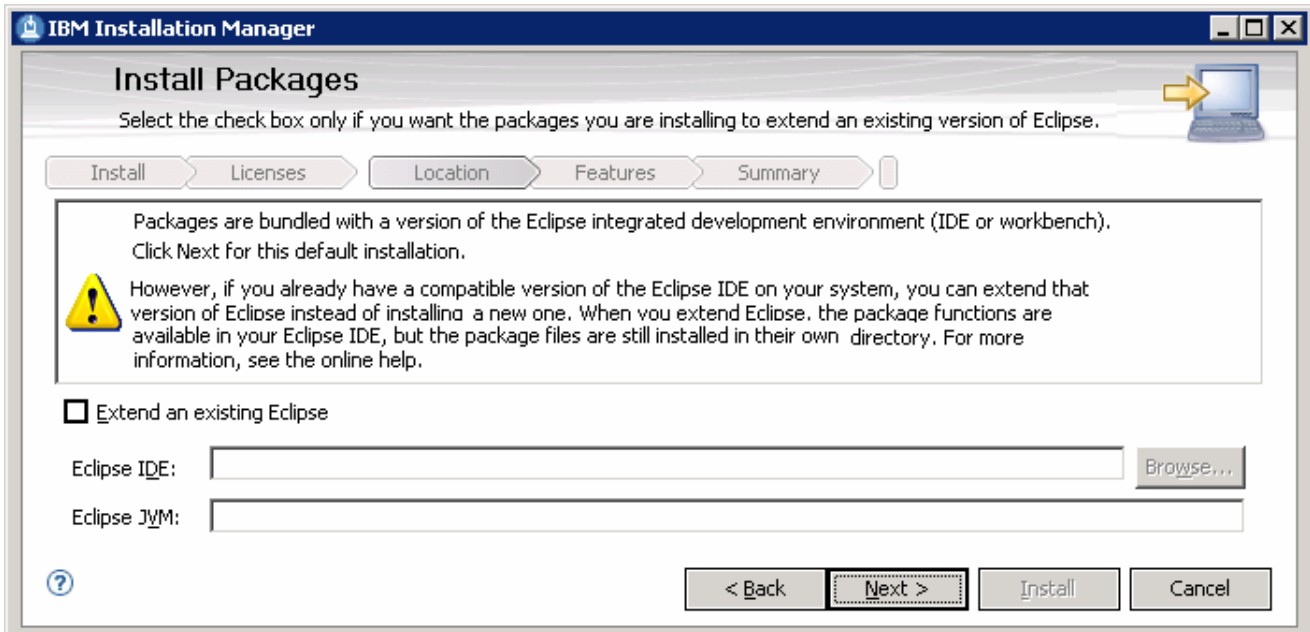
___ 22. In the following panel, click the **Browse** button to set a different installation directory for the package group to **C:\IBM\SPD70**



___ 23. Click **Next**

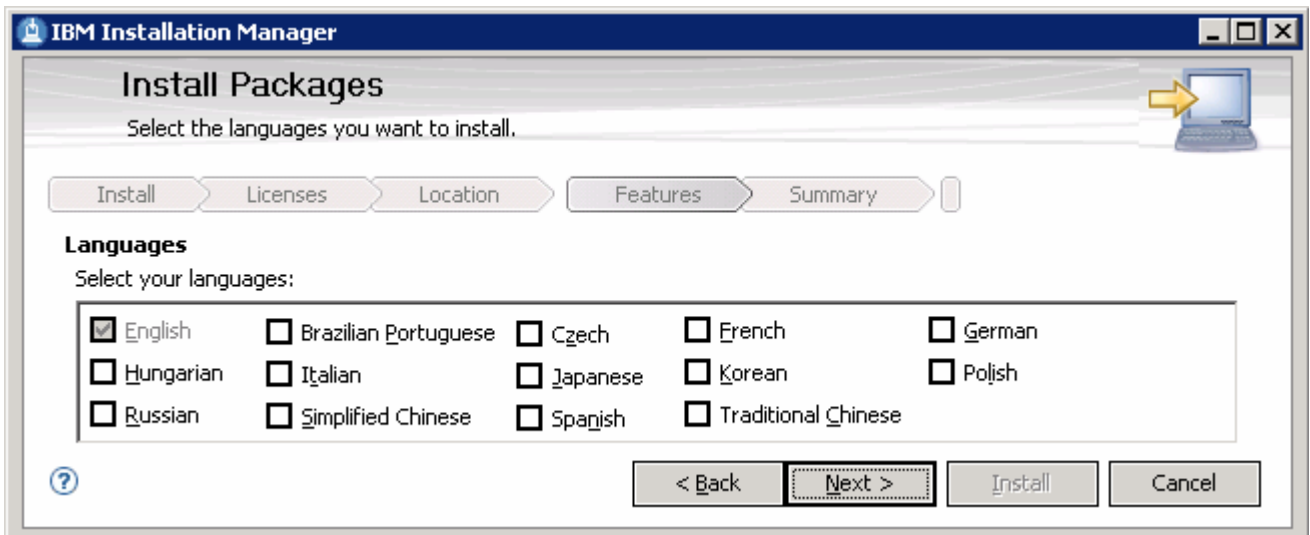
___ 24. Accept the defaults in the following panel

IBM WEBSHERE BUSINESS MONITOR V6.1 – LAB EXERCISE



___ 25. Click **Next**

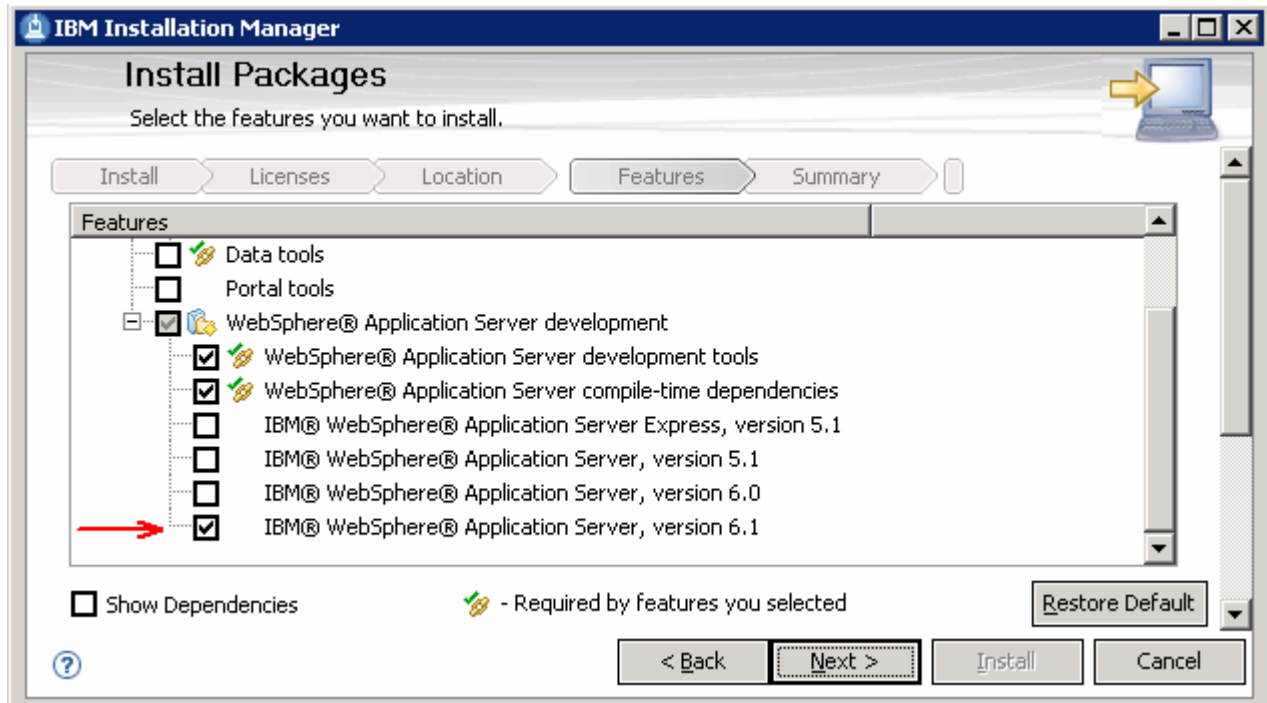
___ 26. In the following panel, select the check box next to the language you want to install



___ 27. Click **Next**

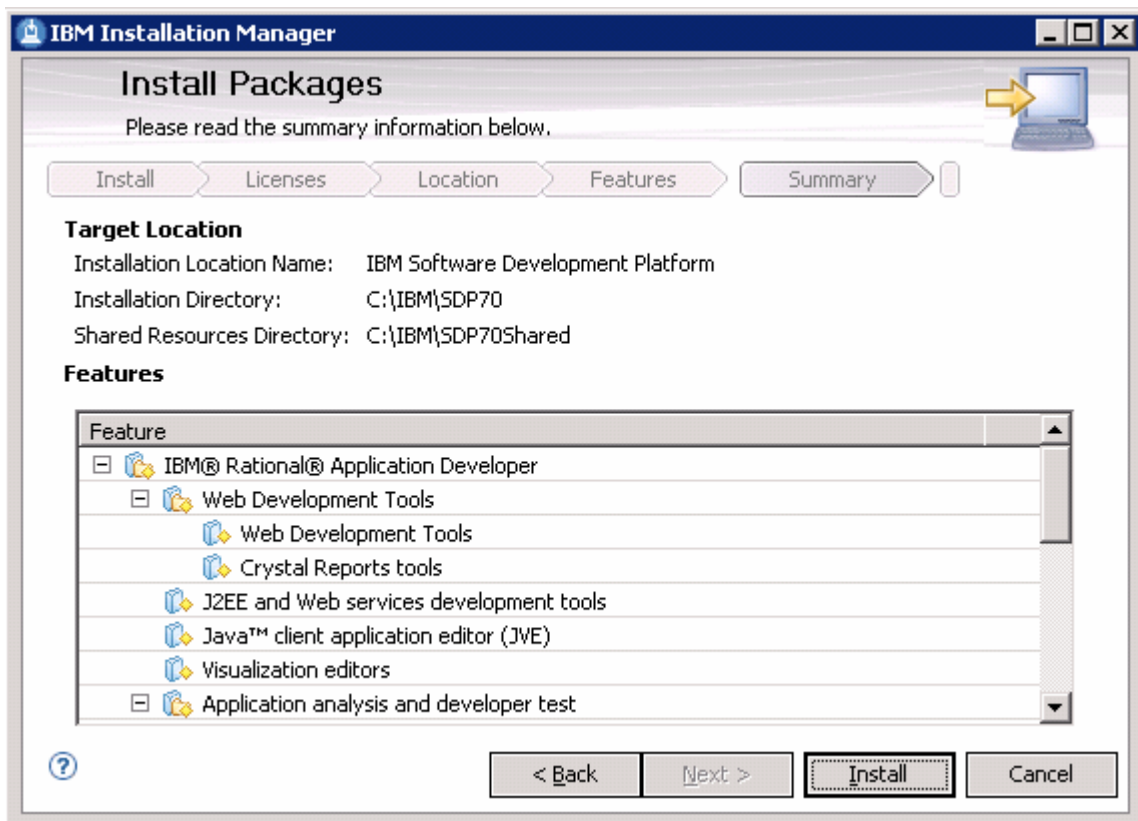
___ 28. In the following panel, accept the default features selected for installation and ensure that the WebSphere Application Server V6.1 development test server is selected for installation

IBM WEBSHERE BUSINESS MONITOR V6.1 – LAB EXERCISE



___ 29. Click **Next**

___ 30. Review the installation summary in the following panel



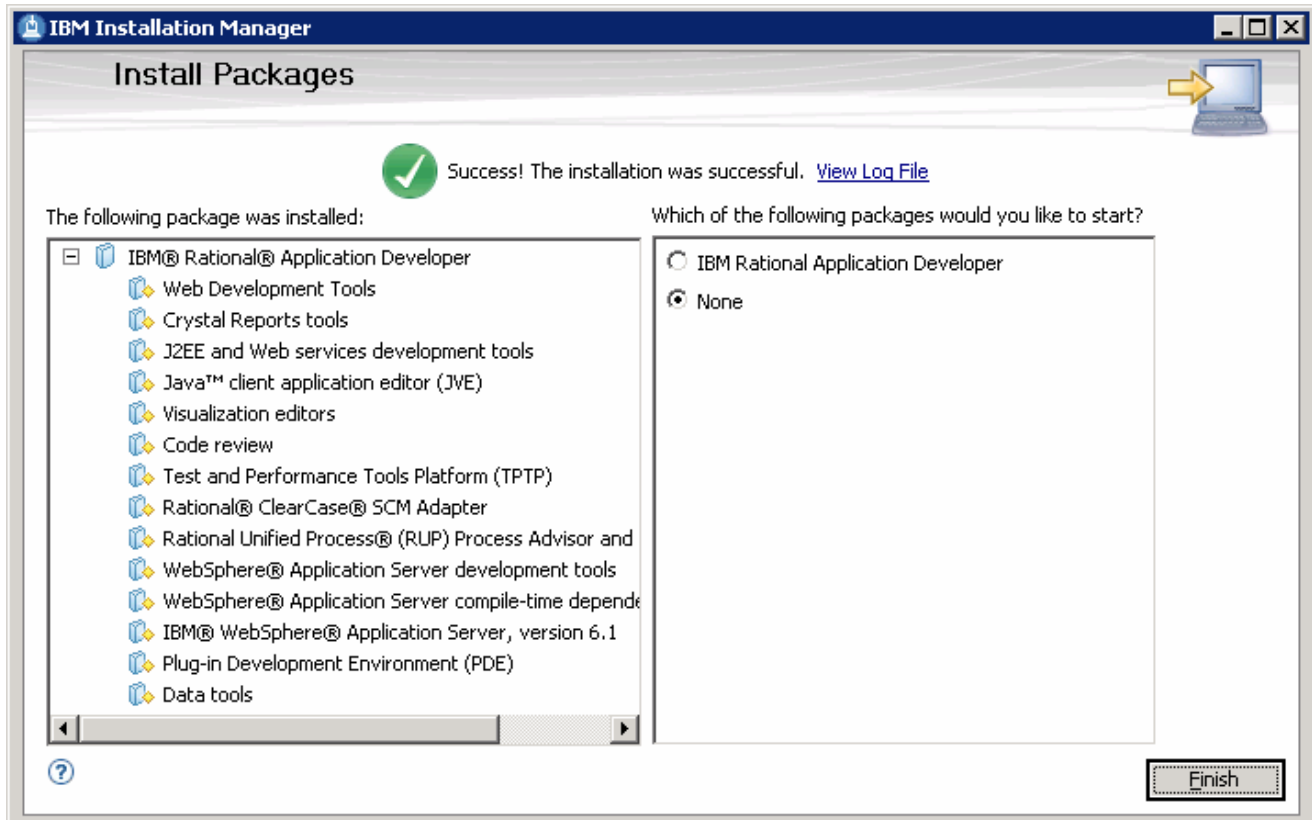
___ 31. Click **Install** to continue with the installation

IBM WEBSHERE BUSINESS MONITOR V6.1 – LAB EXERCISE

___ 32. The Rational Application Developer V7.0 installation progresses as shown below:



___ 33. Once the installation is complete, review the packages installed and select the radio button next to **None**



___ 34. Click **Finish**. The Rational Application Developer V7.0 installation is complete

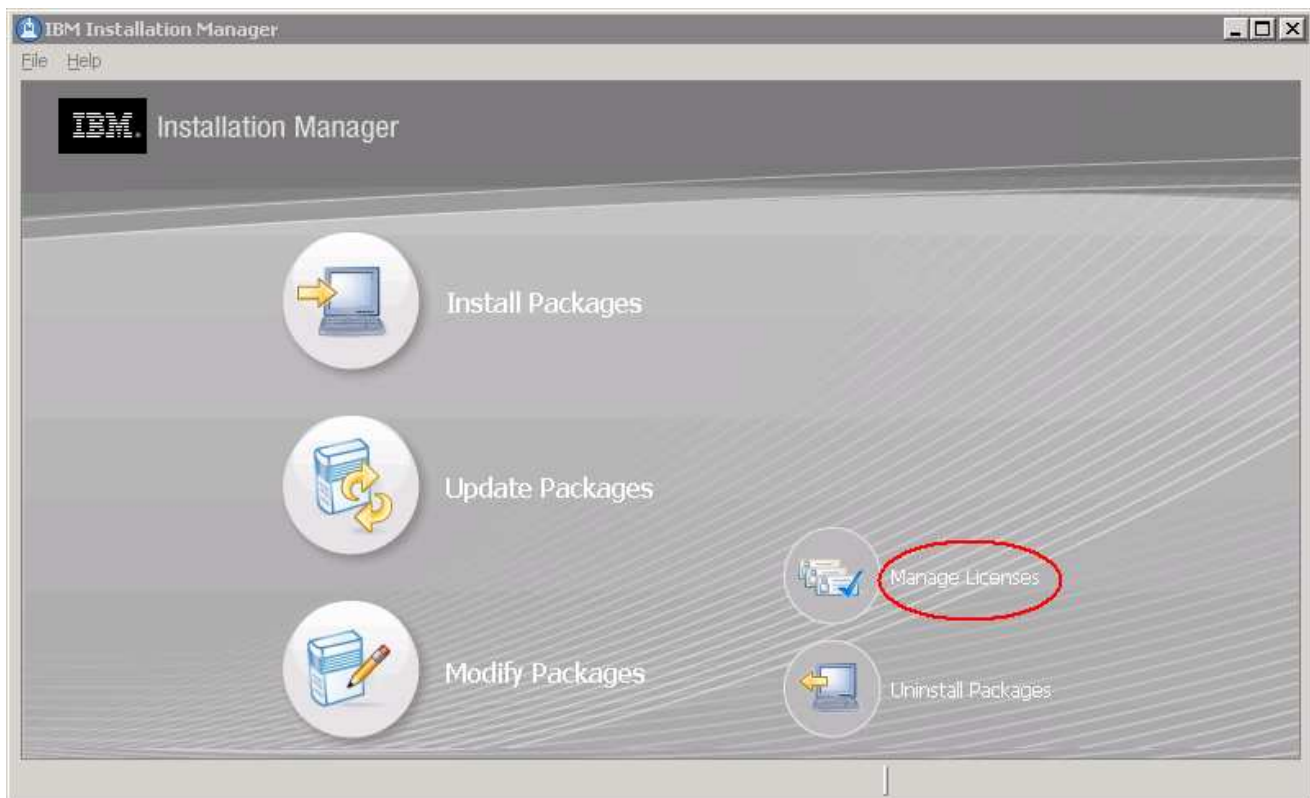
Activate the license and upgrade Rational Application Developer

Rational Application Developer V7.0 must be upgraded to a version that is supported by the WebSphere Business Monitor Development Toolkit V6.1. This is done with the help of IBM Installation Manager. Also you will be activating the Rational Application Developer License.

- ___ 1. Launch the IBM Installation Manager from Start → Programs → IBM Installation Manager → IBM Installation Manager

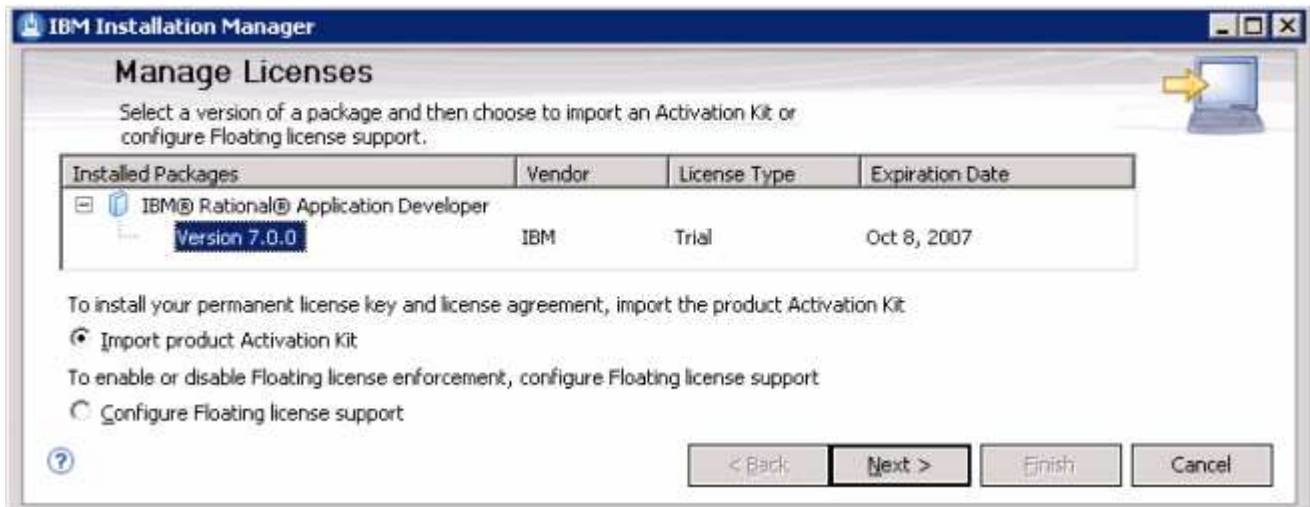


- ___ 2. The IBM Installation Manager's Common Launchpad is launched

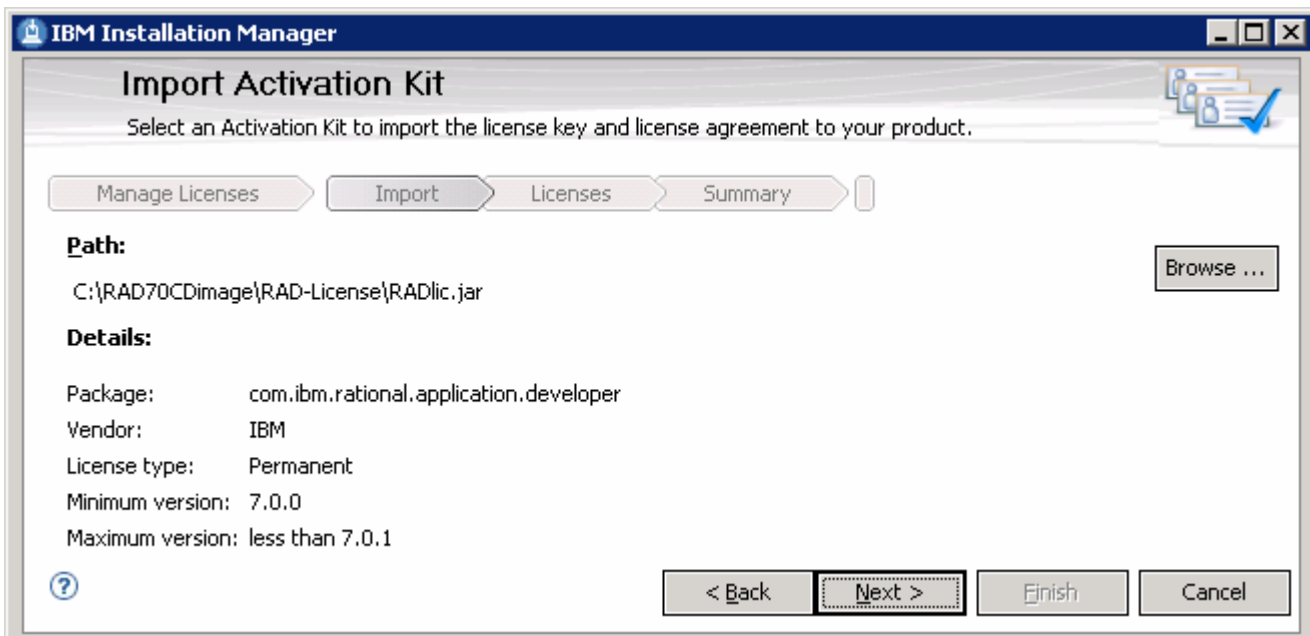


- ___ 3. Click **Manage License** to activate the product
- ___ 4. In the following panel, select the radio button next to **“Import the Product Activation kit”**

IBM WEBSPHERE BUSINESS MONITOR V6.1 – LAB EXERCISE

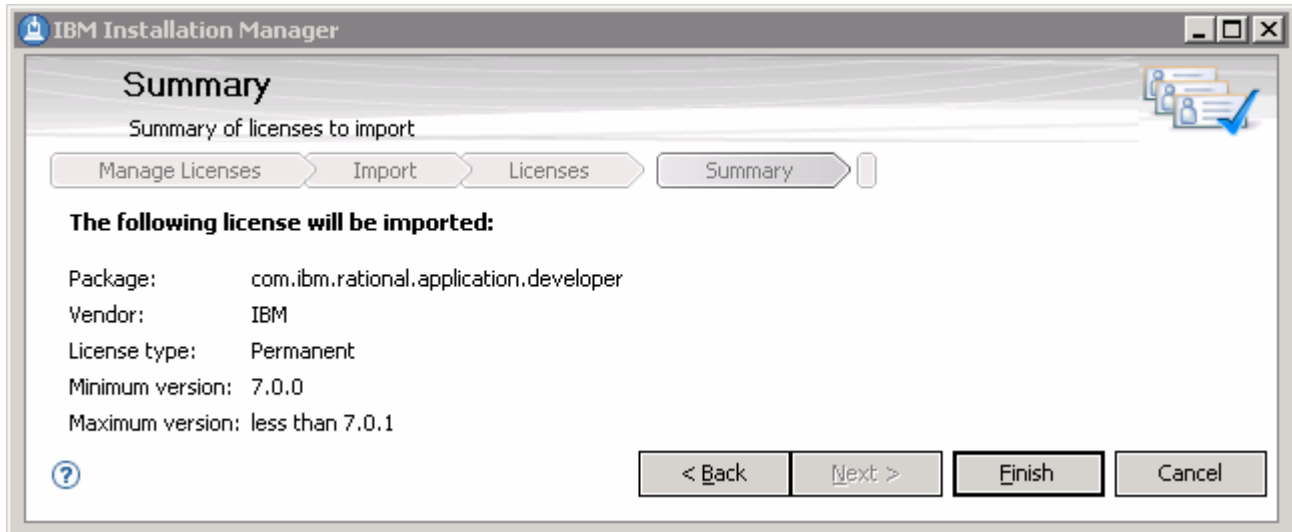


- ___ 5. Click **Next**
- ___ 6. In the following panel, click the **Browse** button to navigate to folder where the installation files are located and select the **RADlic.jar** from the **RAD-License** folder to import the Activation kit. (C:\RAD70CDimage\RAD-Licence\RADlic.jar)

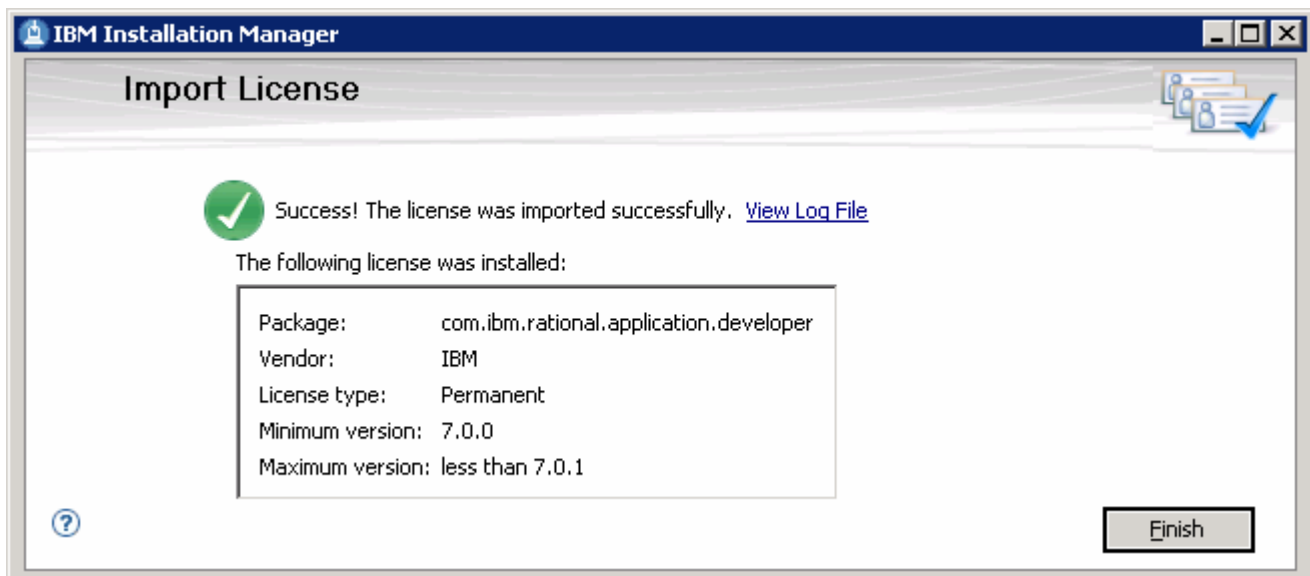


- ___ 7. Click **Next**
- ___ 8. In the following panel, read the license agreements. If you agree to the terms, select the radio button next to "I accept the terms in the license agreements" and Click **Next**
- ___ 9. Review the licenses to import summary in the following panel

IBM WEBSHERE BUSINESS MONITOR V6.1 – LAB EXERCISE

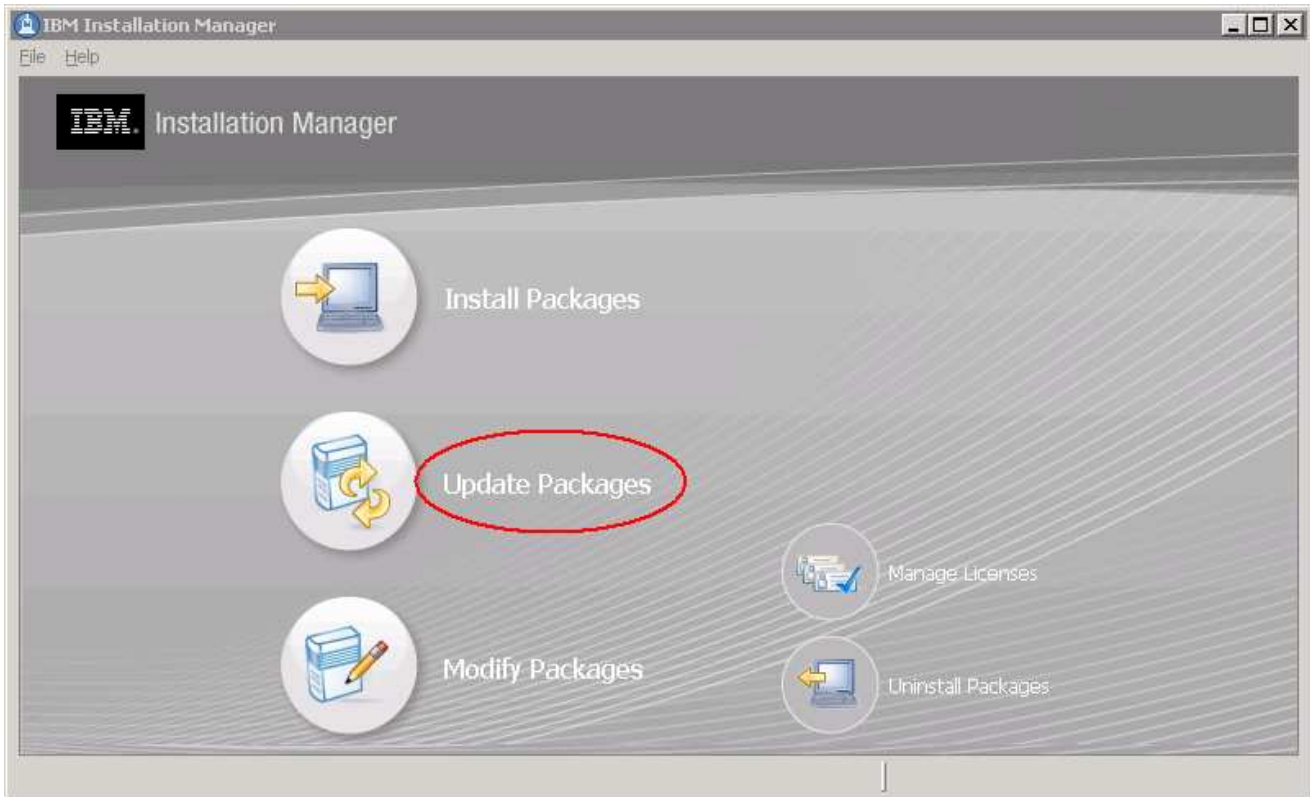


- ___ 10. Click **Finish**. The Rational Application Developer V7.0 activation progresses

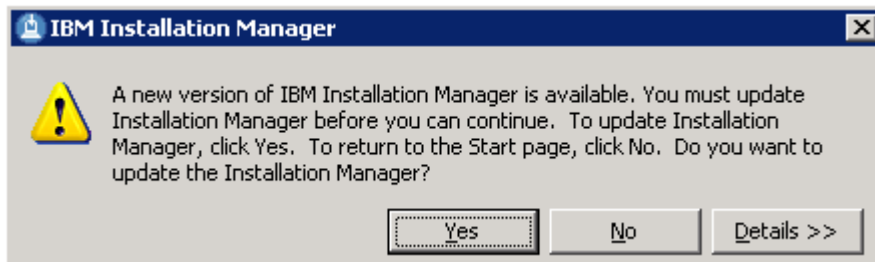


- ___ 11. After the Activation Kit is imported, click **Finish** to exit Installation Manager. Rational Application Developer V7.0 is ready for use
- ___ 12. Now that the Rational Application Developer V7.0 license is activated, click on **Update packages** to upgrade the Rational Application Developer to version 7.0.0.5 in the IBM Installation Manager's Common launchpad

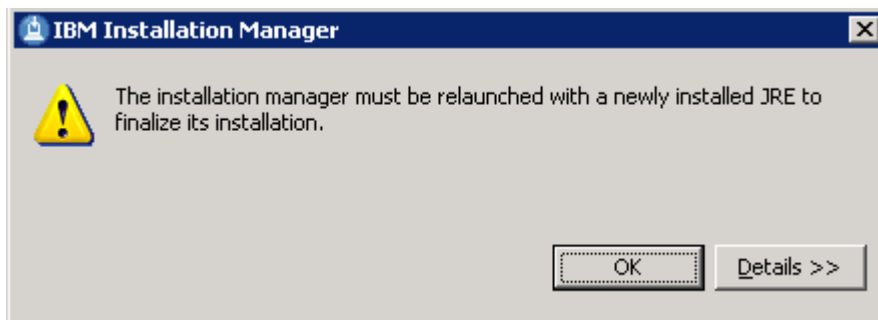
IBM WEBSPHERE BUSINESS MONITOR V6.1 – LAB EXERCISE



Note: On clicking the Update packages link, the Installation Manager may prompt for an upgrade if necessary. Click the **Yes** button if prompted to update IBM Installation Manager.



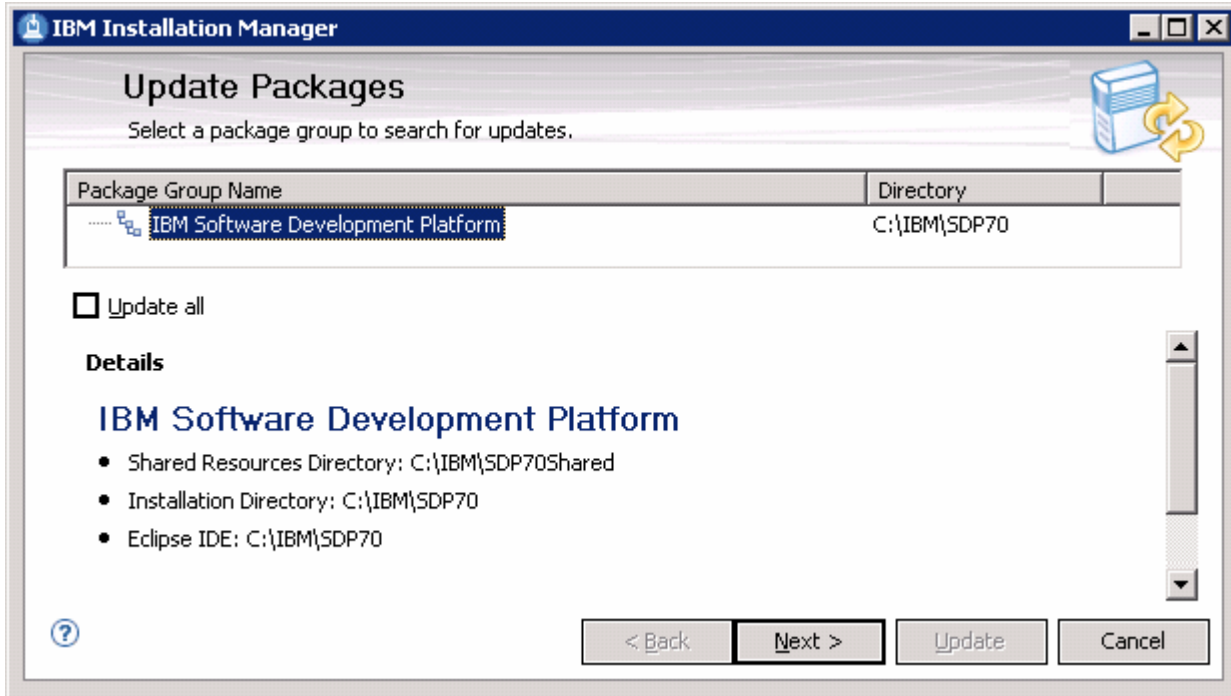
____ 13. Once the upgrade is complete, a warning message is prompted to re-launch the Installation Manager to finalize the installation.



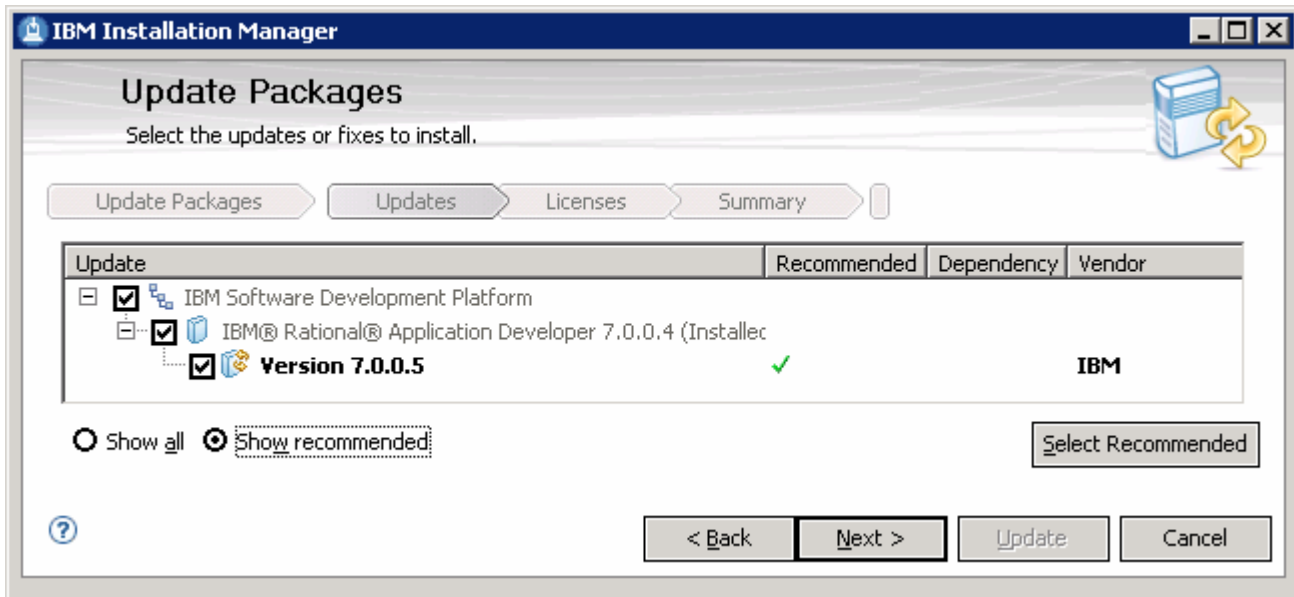
____ 14. Click **OK** to re-launch the Installation Manager

IBM WEBSHERE BUSINESS MONITOR V6.1 – LAB EXERCISE

- ___ 15. Now click the **Update packages** link again on the Installation Manager’s common launchpad
- ___ 16. The IBM Installation Manager is launched and prompts for updating the existing Rational Application Developer packages

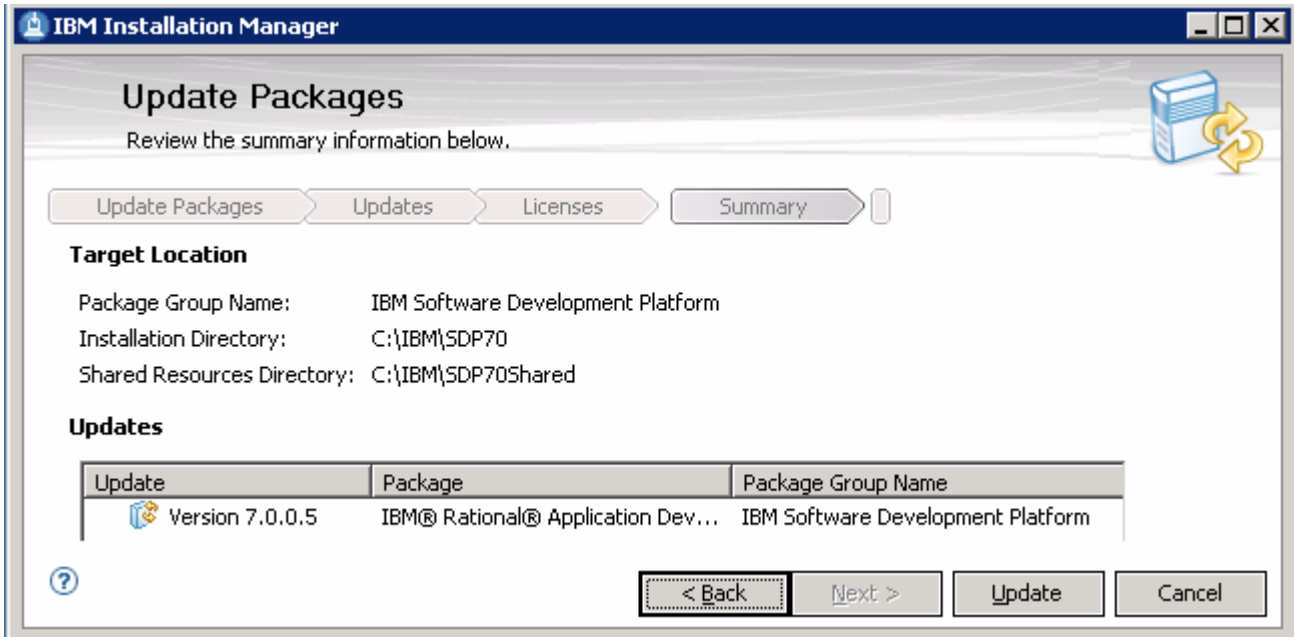


- ___ 17. Select **IBM Software Development Platform** as the **Package Group Name** and Click **Next**
- ___ 18. In the following panel, ensure the check box next to **Version 7.0.0.5** is selected

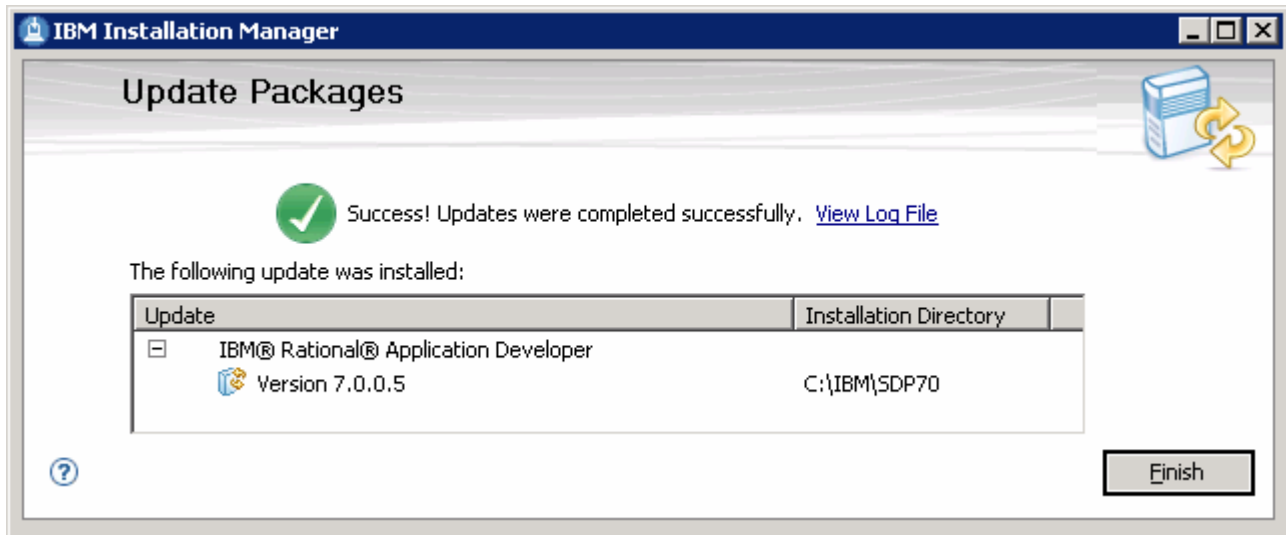
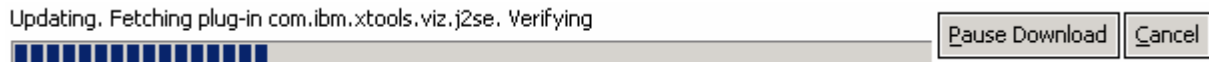


- ___ 19. Click **Next**
- ___ 20. In the following panel, read the license agreements. If you agree to the terms, select the radio button next to **"I accept the terms in the license agreements"** and Click **Next**

21. Review the update summary in the following panel



22. Click **Update**. The Rational Application Developer V7.0 updates to V7.0.0.5 as shown below:



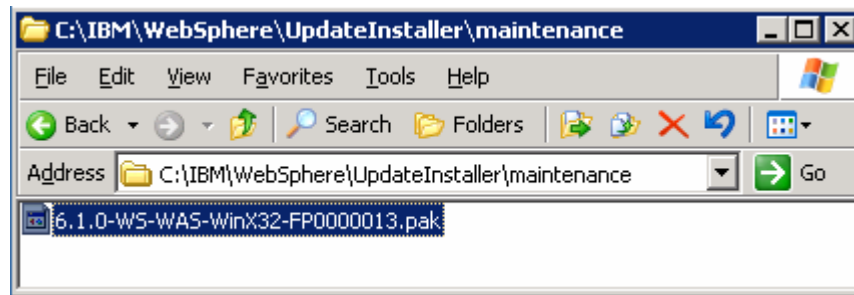
23. After the update is complete, click **Finish** to exit Installation Manager. The Rational Application Developer V7.0 is upgraded to Version 7.0.0.5

Update WebSphere Application Server V6.1.0.2 to V6.1.0.13

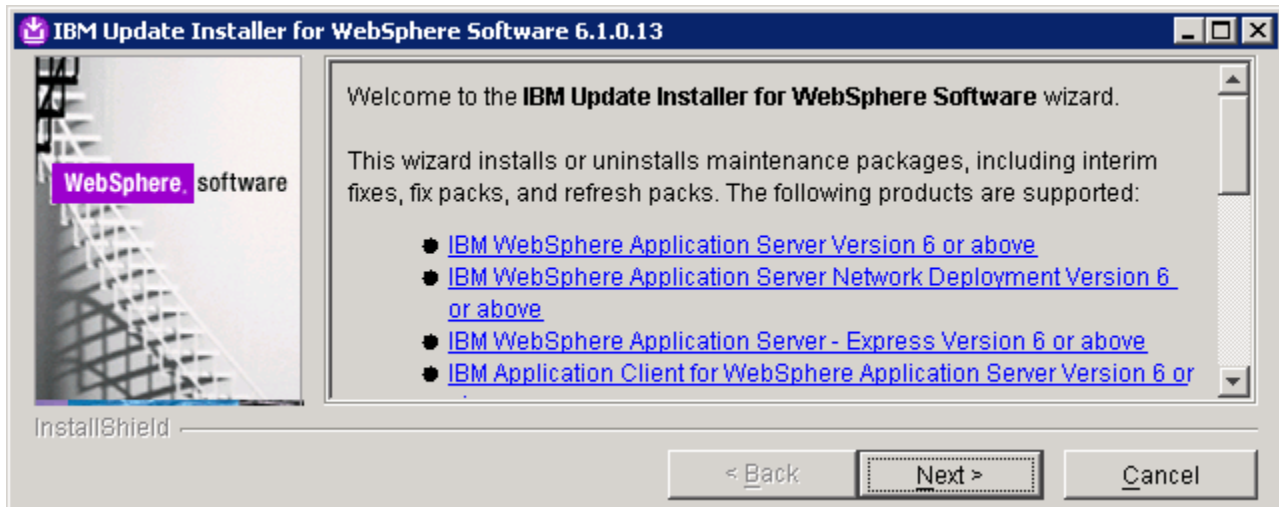
Now that you have upgraded Rational Application Developer V7.0 to version 7.0.0.5, update the embedded WebSphere Application Server installation to version 6.1.0.13 using the new WebSphere software update installer.

Prerequisite: - Before proceeding further, install the WebSphere Application Server update installer. The instructions for the same can be found at: "[Appendix 1: Installing the Update Installer for WebSphere Software](#)"

1. Obtain and copy the WebSphere Application Server V6.1 fix pack file; **6.1.0-WS-WAS-WinX32-FP0000013.pak** to the **maintenance** directory located at **C:\IBM\WebSphere\UpdateInstaller**, that is the Update Installer installation location

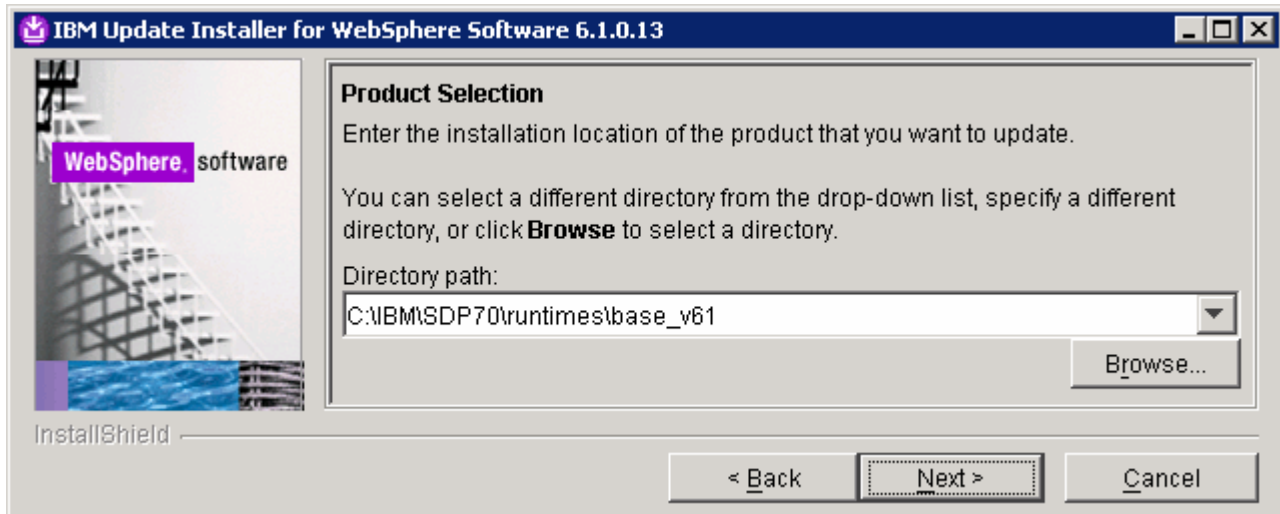


2. Launch the WebSphere Application Server update installer from the start menu
3. Read the instructions carefully on the Welcome page



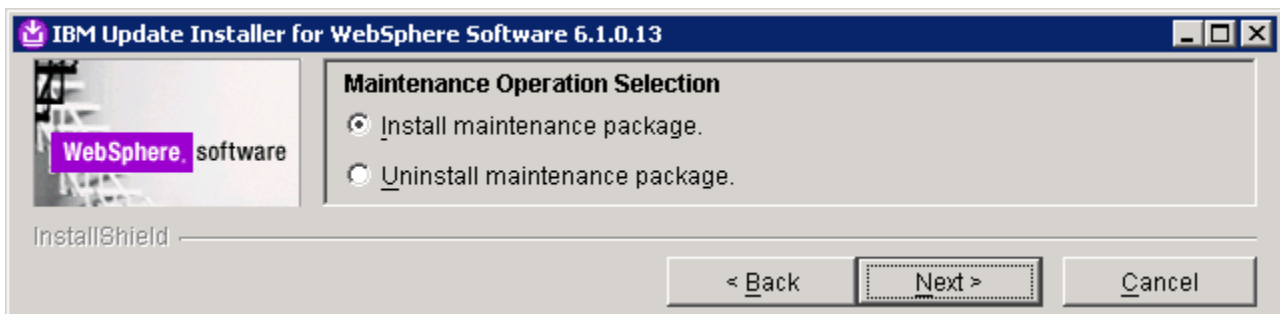
4. Click **Next**
5. In the following panel, ensure the embedded WebSphere Application Server V6.1 installation location is correct or else click **Browse** button to see the installation location

IBM WEBSHERE BUSINESS MONITOR V6.1 – LAB EXERCISE



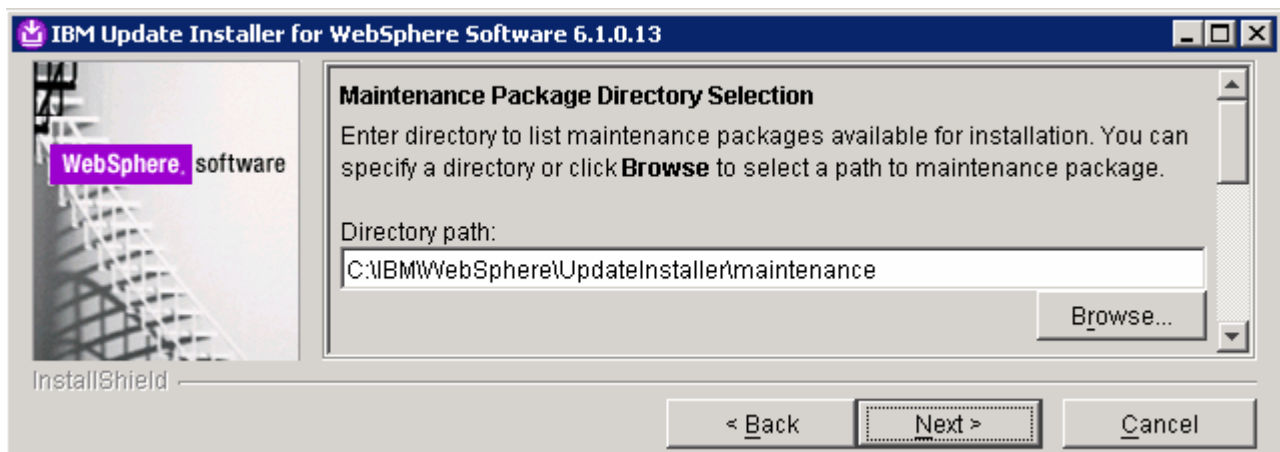
___ 6. Click **Next**

___ 7. In the following panel, select the radio button next to **Install maintenance package**



___ 8. Click **Next**

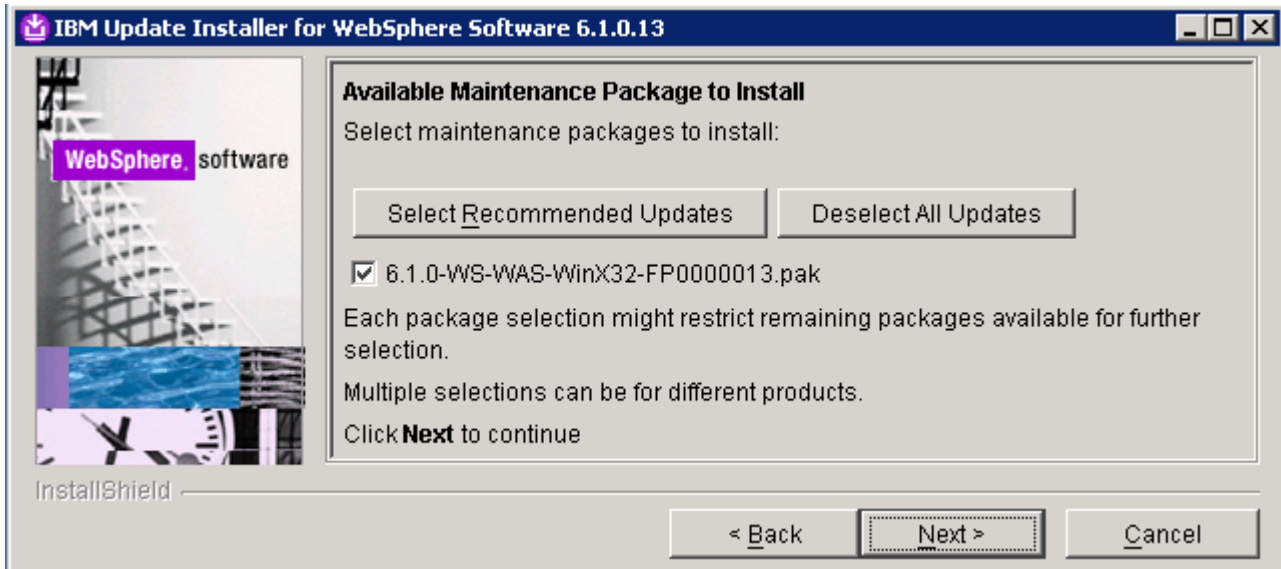
___ 9. In the following panel, click the **Browse** button to select the **maintenance packages** directory



___ 10. Click **Next**

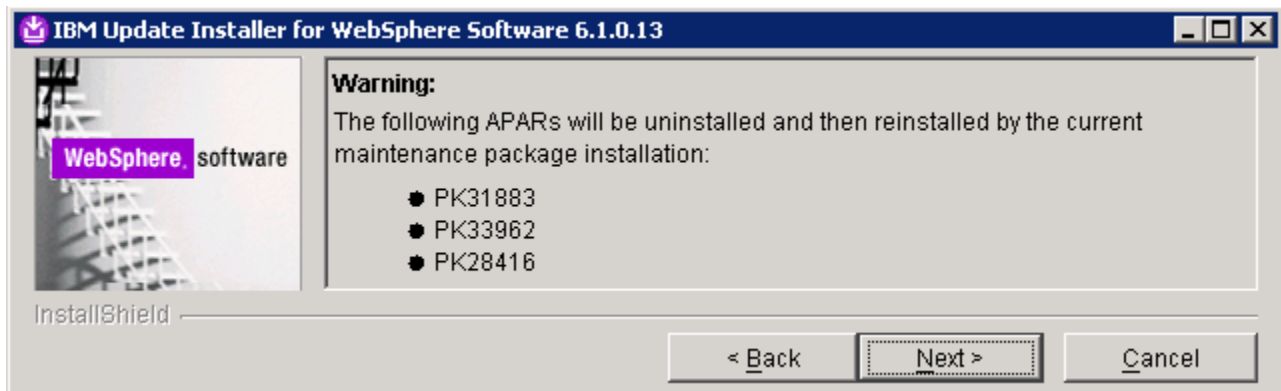
___ 11. In the following panel, click the **“Select the recommended updates”** button. This action selects only the required for the current WebSphere Application Server installation

IBM WEBSHERE BUSINESS MONITOR V6.1 – LAB EXERCISE

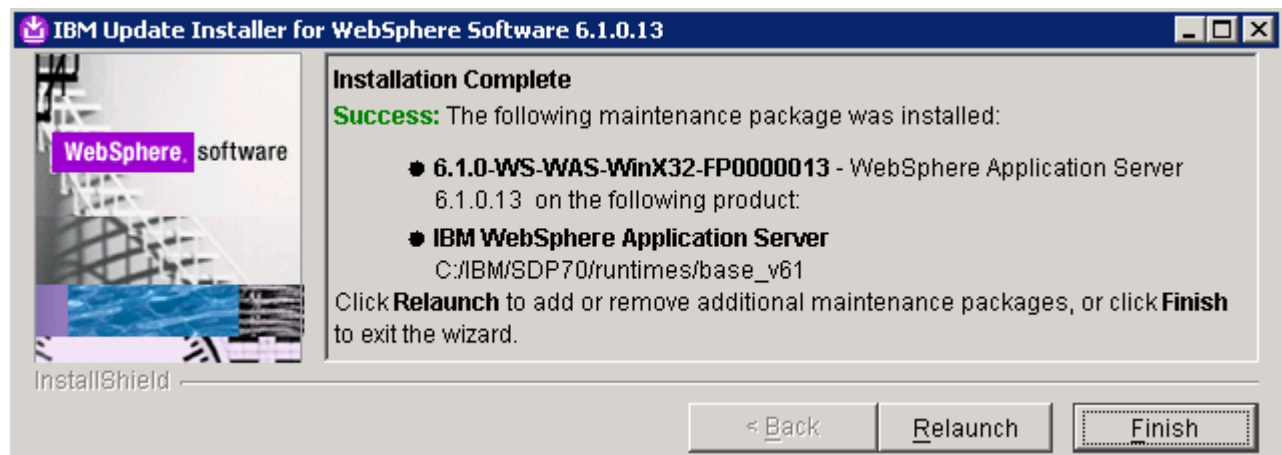


___ 12. Click **Next**

___ 13. In the following panel, read the '**Warning**' message carefully



___ 14. Click **Next**. Review the installation summary and click **Next** to continue the installation. The fix pack installation progresses

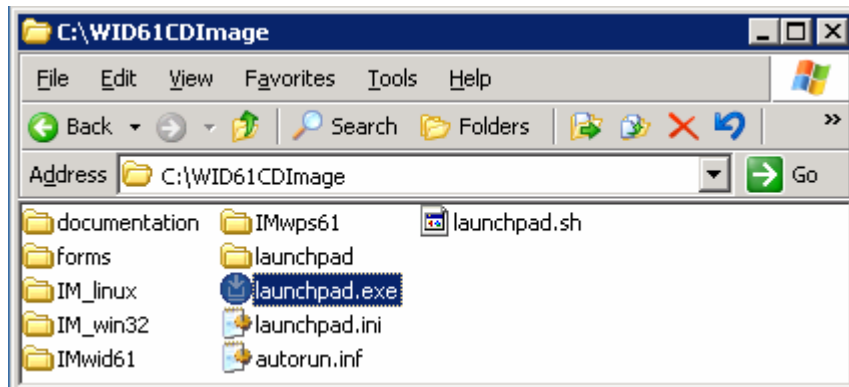


___ 15. Click **Finish** to exit the Update Installer once the installation is complete

Task 2: Installing WebSphere Integration Developer V6.1

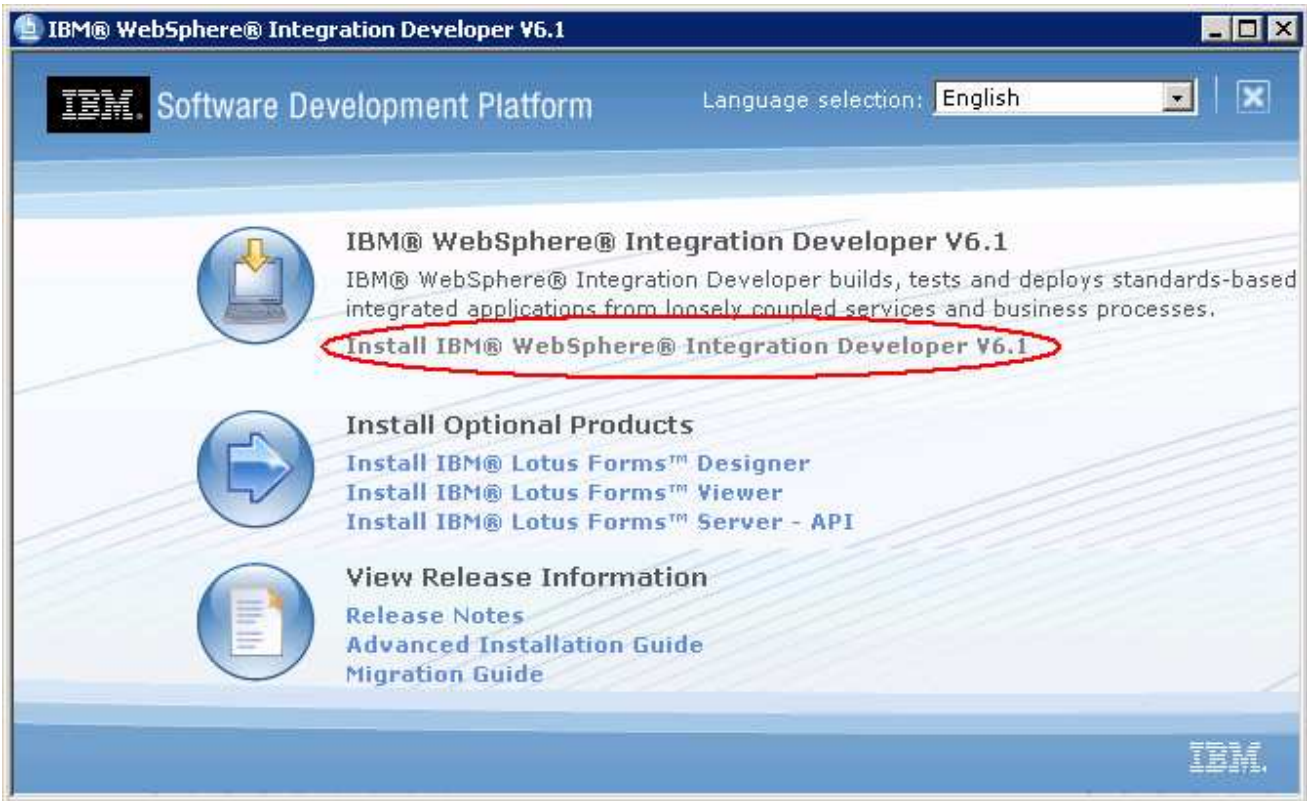
This part of the lab provides step-by-step instructions for installing the WebSphere Integration Developer V6.1 using IBM Installation Manager V1.1.

- ___ 1. The following are the installation files needed to install the WebSphere Integration Developer V6.1
 - ___ a. WID_v61_1.zip
 - ___ b. WID_v61_2.zip
 - ___ c. ProcessServer_v61_win.zip
 - ___ d. wid_6.1.0.0_ifix001.zip
- ___ 2. Obtain the WebSphere Integration Developer V6.1 software and extract in such a way to create the correct on-disk structure for the Common Launchpad to run with out any interruption during the installation
- ___ 3. Extract both the WID_v61_1.zip and WID_v61_2.zip installation archives to a directory (for example **C:\WID61CDImage**) and the ProcessServer_v61_win.zip archive to the same directory (for example **C:\WID61CDImage**). Click **Yes to All** to overwrite the contents. Confirm that the directories and files are extracted correctly; it should appear similar to the picture below:

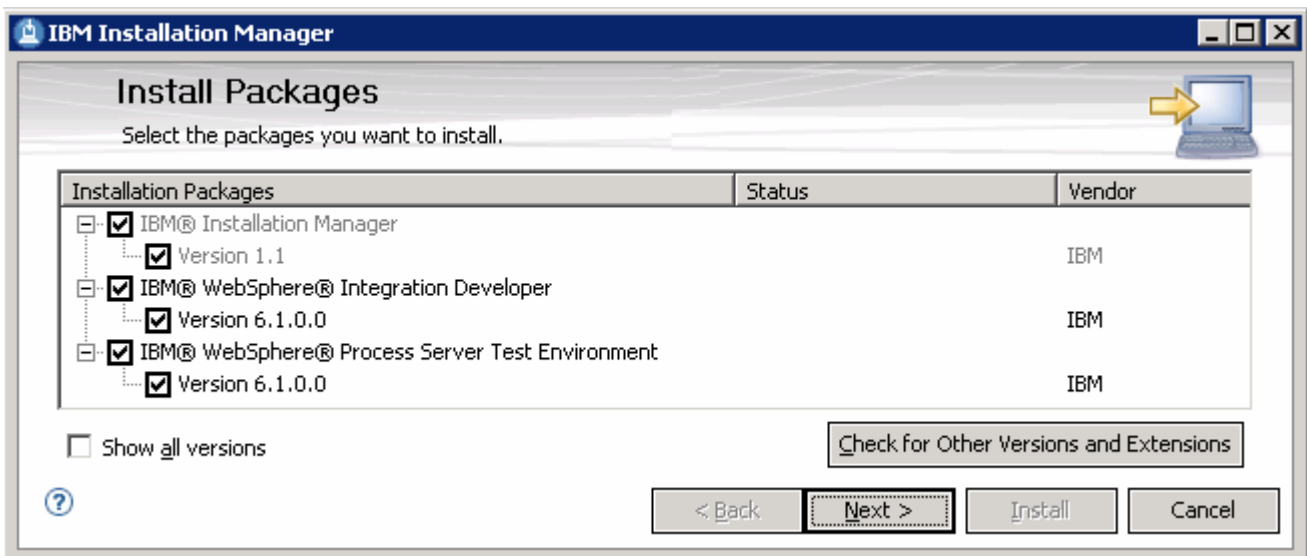


- ___ 4. Double-click **launchpad.exe** to launch the Common Launchpad

IBM WEBSHERE BUSINESS MONITOR V6.1 – LAB EXERCISE



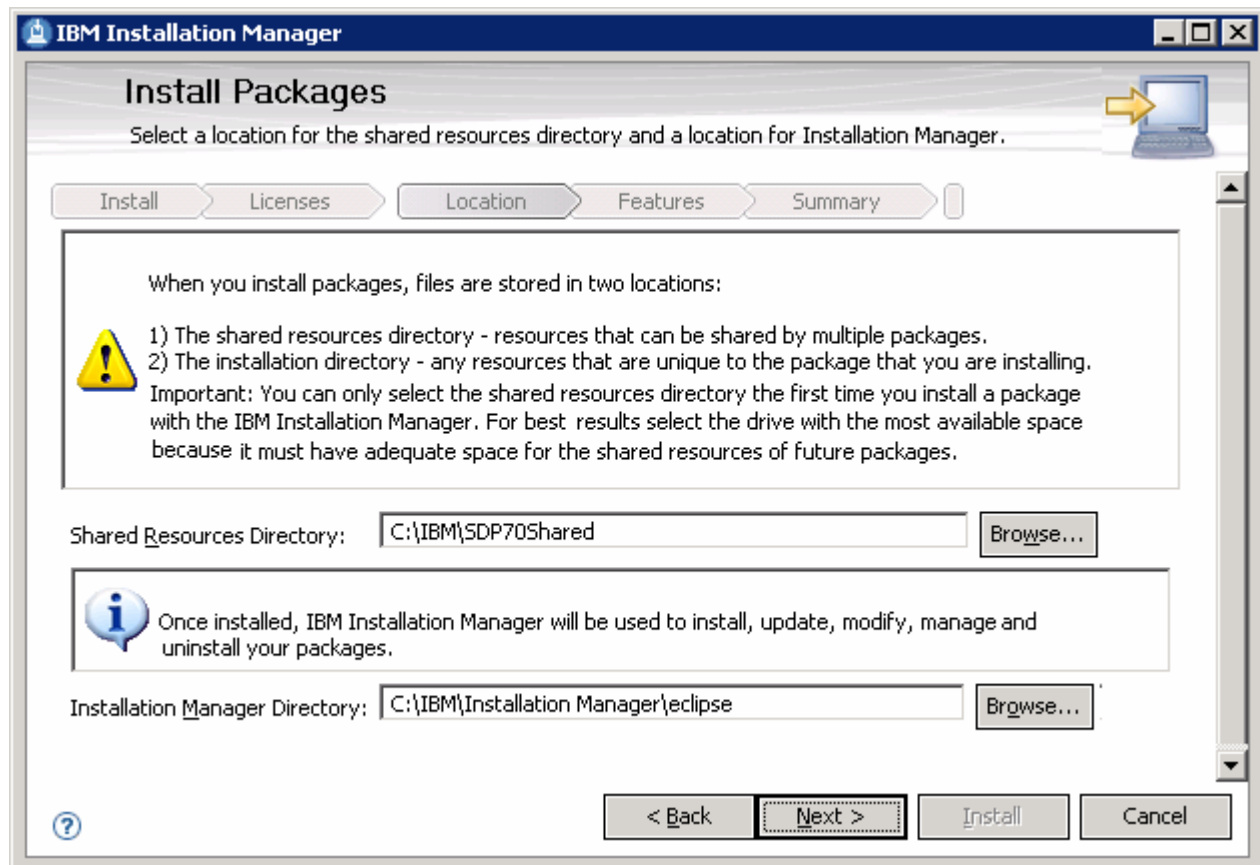
5. Click 'Install IBM WebSphere Integration Developer V6.1' link to launch the Installation Manager
6. The IBM Installation Manager V1.1 is launched. Ensure that the check boxes next to **IBM Installation Manager (Version 1.1)**, **IBM WebSphere Integration Developer (Version 6.1.0.0)** and **IBM WebSphere Process Server Test Environment (Version 6.1.0.0)** are selected



Note: If the Installation Manager is already installed at this time, it is launched automatically and you are not prompted for an installation. However, you may be prompted for an update to the latest version.

IBM WEBSPHERE BUSINESS MONITOR V6.1 – LAB EXERCISE

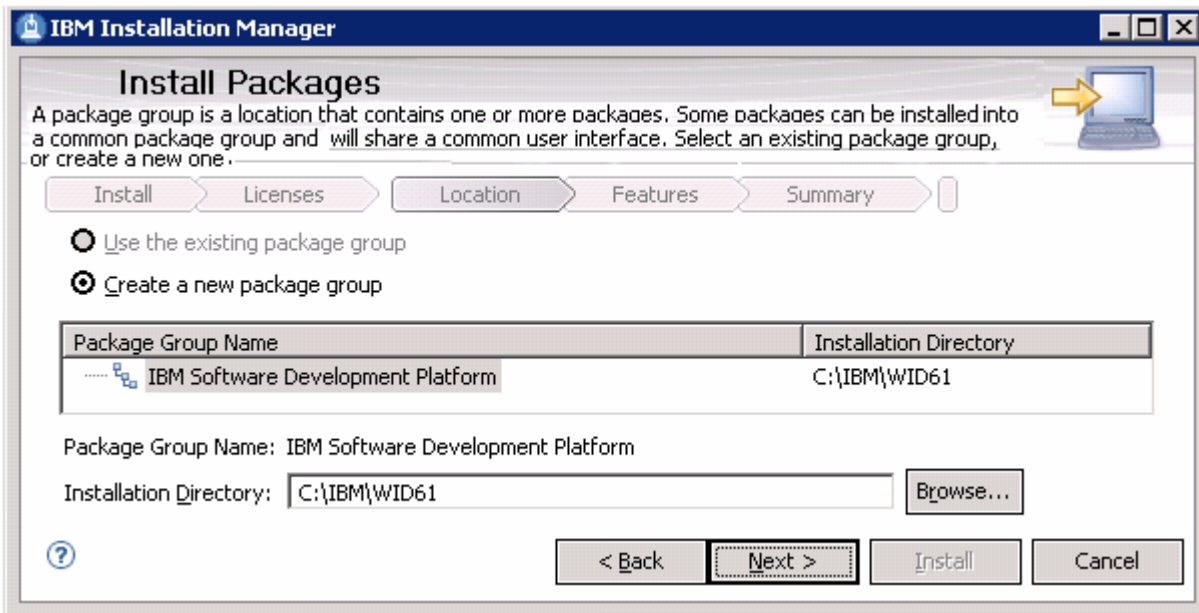
- ___ 7. Click **Next**
- ___ 8. In the following panel, read the license agreements. If you agree to the terms, select the radio button next to “**I accept the terms in the license agreements**” and Click **Next**
- ___ 9. In the following panel, read the instructions carefully and follow the instructions below:
- ___ a. Click the **Browse** button for ‘**Shared Resources Directory**’ to set the shared resources directory location to **C:\IBM\SDP70Shared**
 - ___ b. Click the **Browse** button for ‘**Installation Manager Directory**’ to set the Installation Manager installation location to **C:\IBM\Installation Manager\eclipse**



Note: The Installation Manager Directory field is dimmed as though not available if it was already installed. Remember that only one instance of an Installation Manager can be installed.

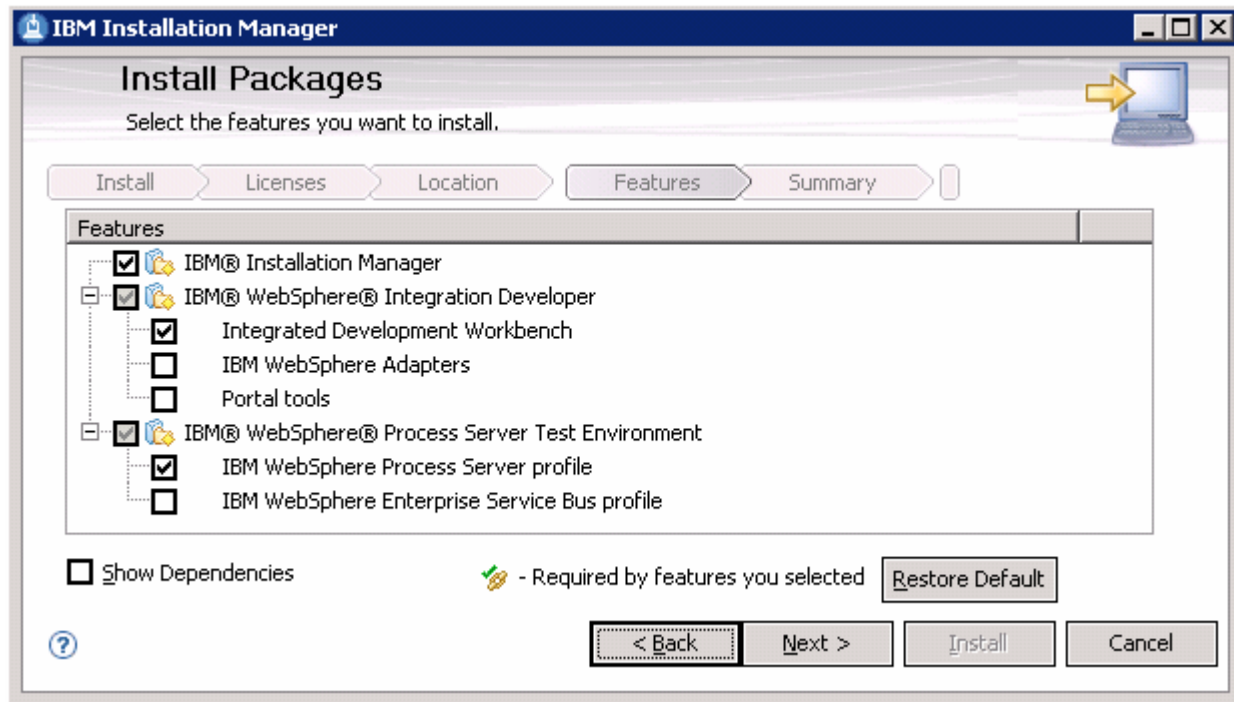
- ___ 10. Click **Next**
- ___ 11. In the following panel, ensure the radio button next to ‘**Create a new package group**’ is selected and click the **Browse** button to set the installation directory for the package group and set to **C:\IBM\WID61**

IBM WEBSHERE BUSINESS MONITOR V6.1 – LAB EXERCISE



___ 12. Click **Next**

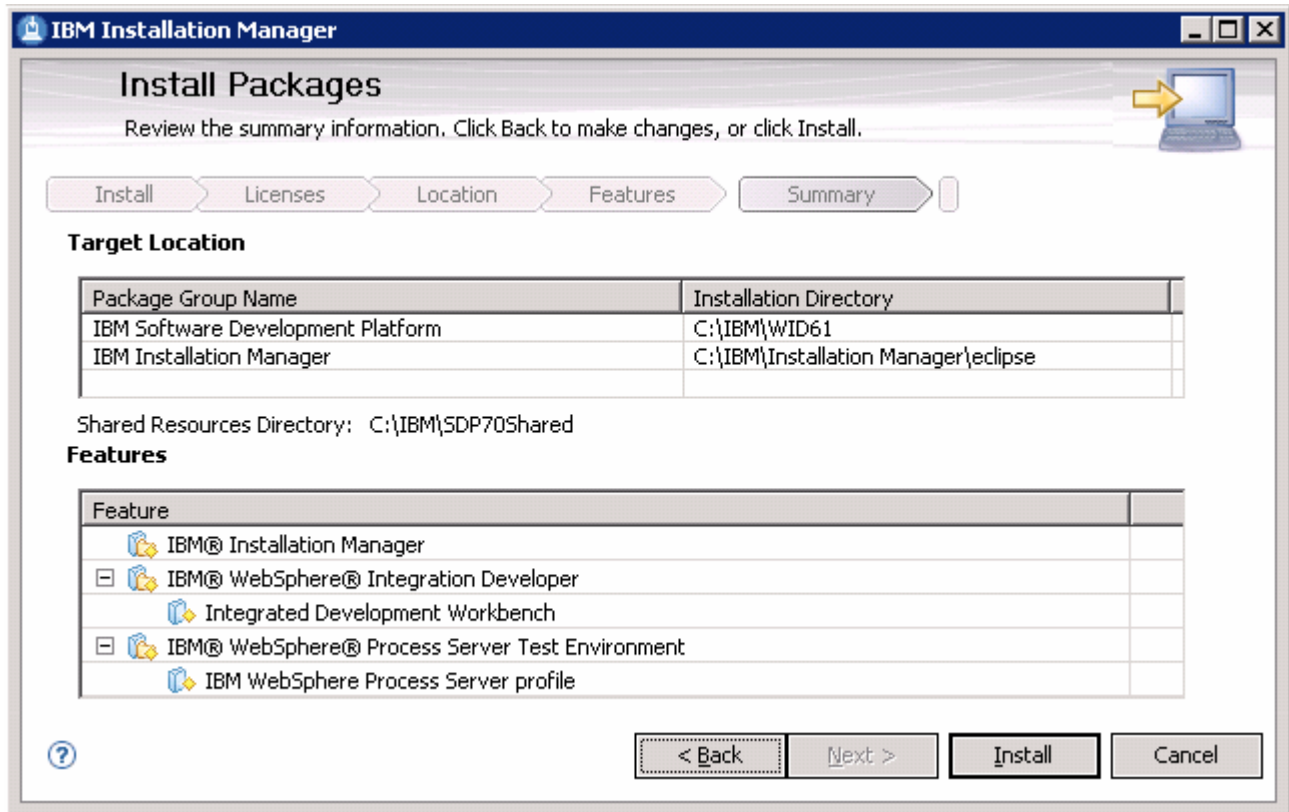
___ 13. In the following feature selection panel, select the check boxes next to **IBM Installation Manager**, **Integrated Development Workbench** and **WebSphere Process Server profile**



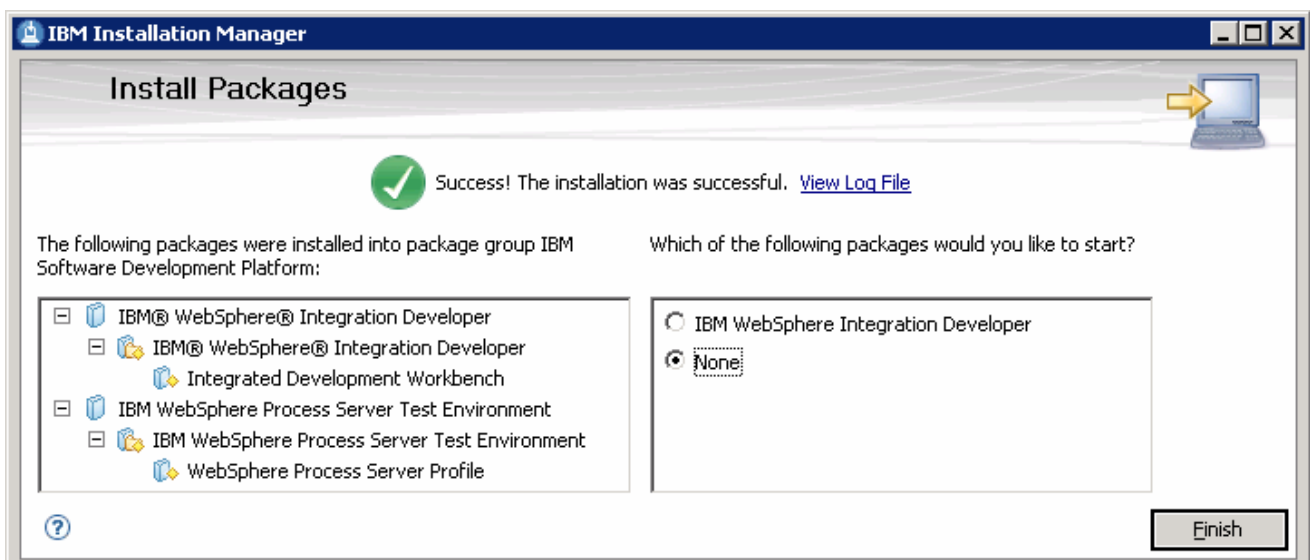
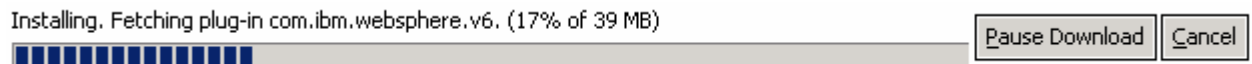
___ 14. Click **Next**

___ 15. Review the installation summary in the following panel

IBM WEBSHERE BUSINESS MONITOR V6.1 – LAB EXERCISE



16. Click **Install** to continue with the installation. The installation progresses



17. Select the radio button next to **None** and click **Finish** when the installation is complete

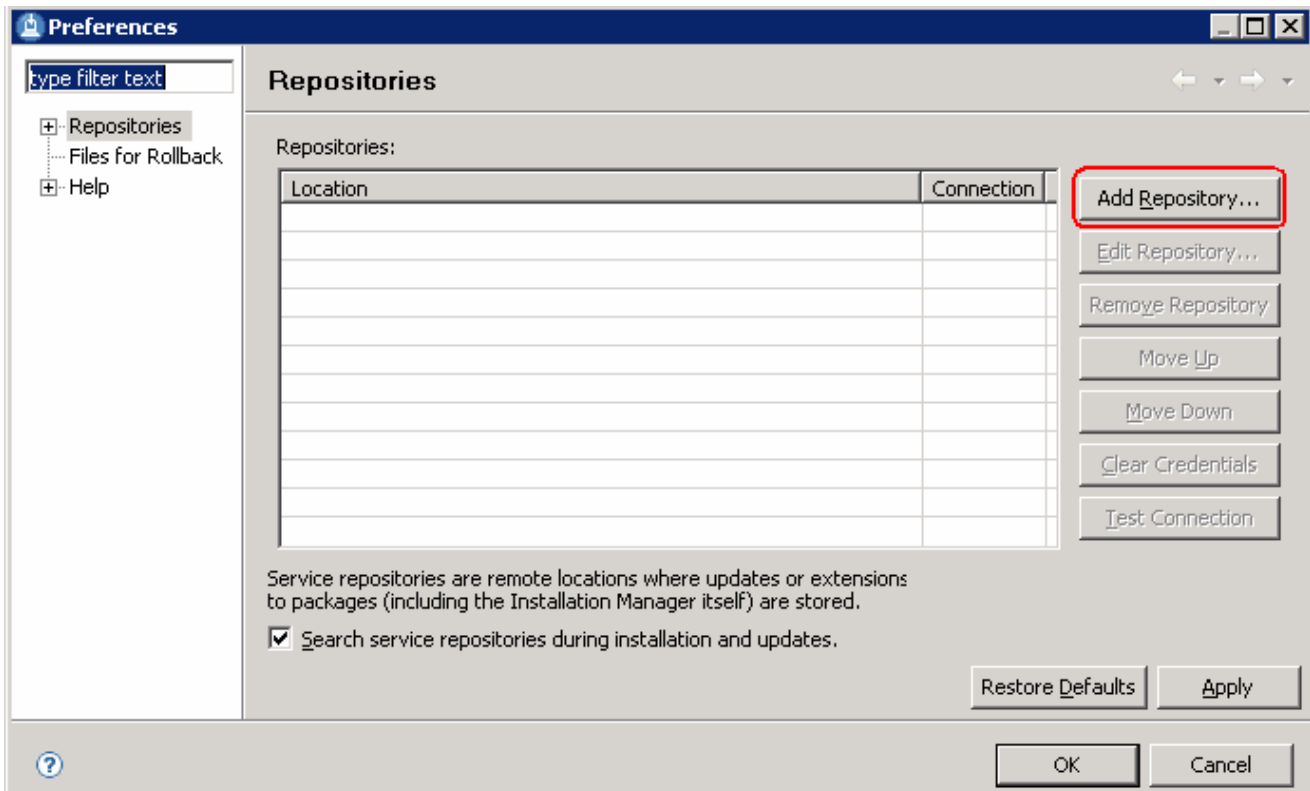
Updating the WebSphere Integration Developer V6.1 with *iFix001*

In this sub section, the WebSphere Integration Developer V6.1 will be updated with an interim fix. Close the WebSphere Integration Developer if it is running at this time.

- ___ 1. Obtain the interim fix 001 and extract it to a temporary directory.
 - ___ a. wid_6.1.0.0_ifix001.zip
- ___ 2. Now launch the Installation Manager from **Start → Programs → IBM Installation Manager → IBM Installation Manager**

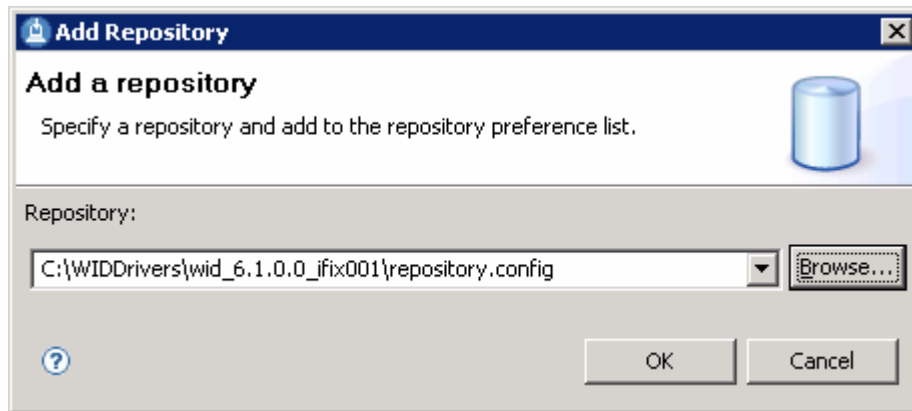


- ___ 3. From the main menu of the Installation Manager, select **File → Preferences**. The **Preferences** panel is launched

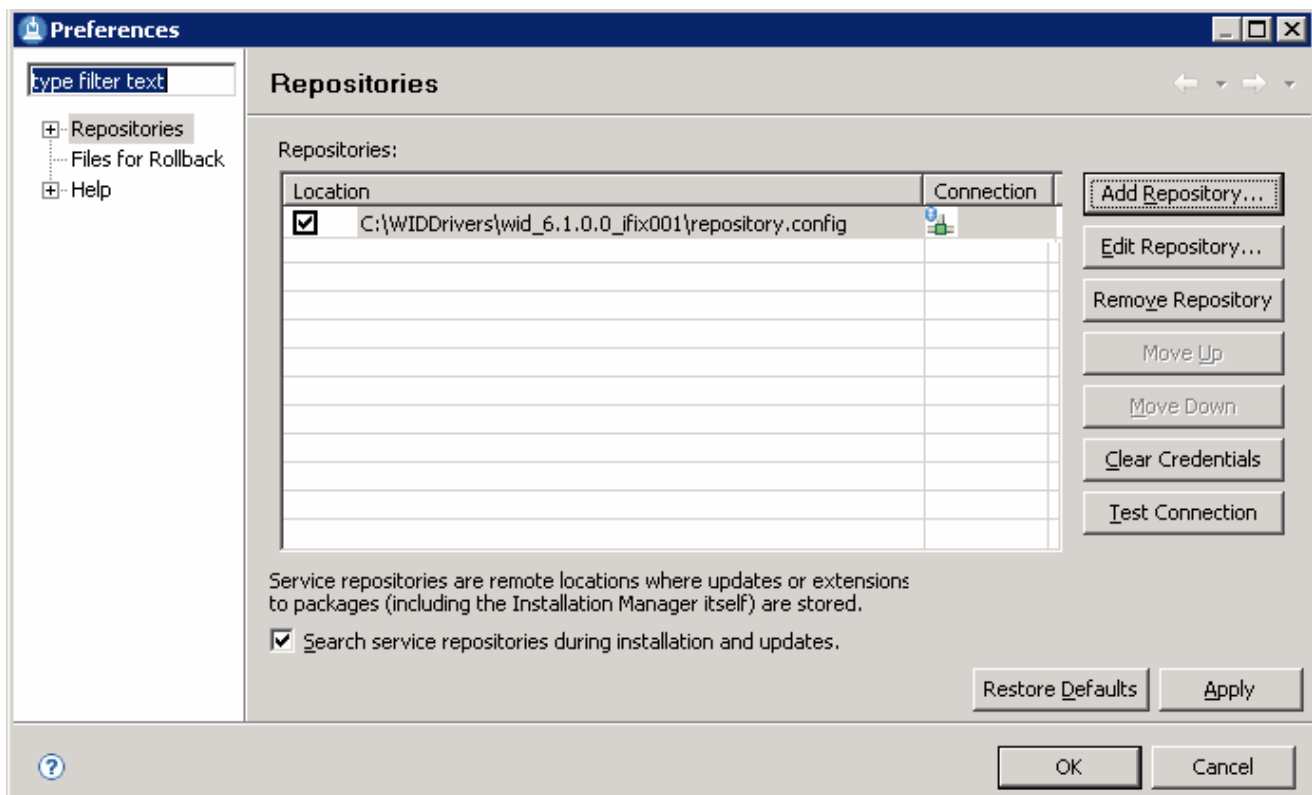


- ___ 4. Click the **Add Repository** button. The **Add Repository** dialog opens

IBM WEBSHERE BUSINESS MONITOR V6.1 – LAB EXERCISE



5. Click the **Browse** button for the 'Repository:' field and select the '**repository.config**' file and the click the **OK** button

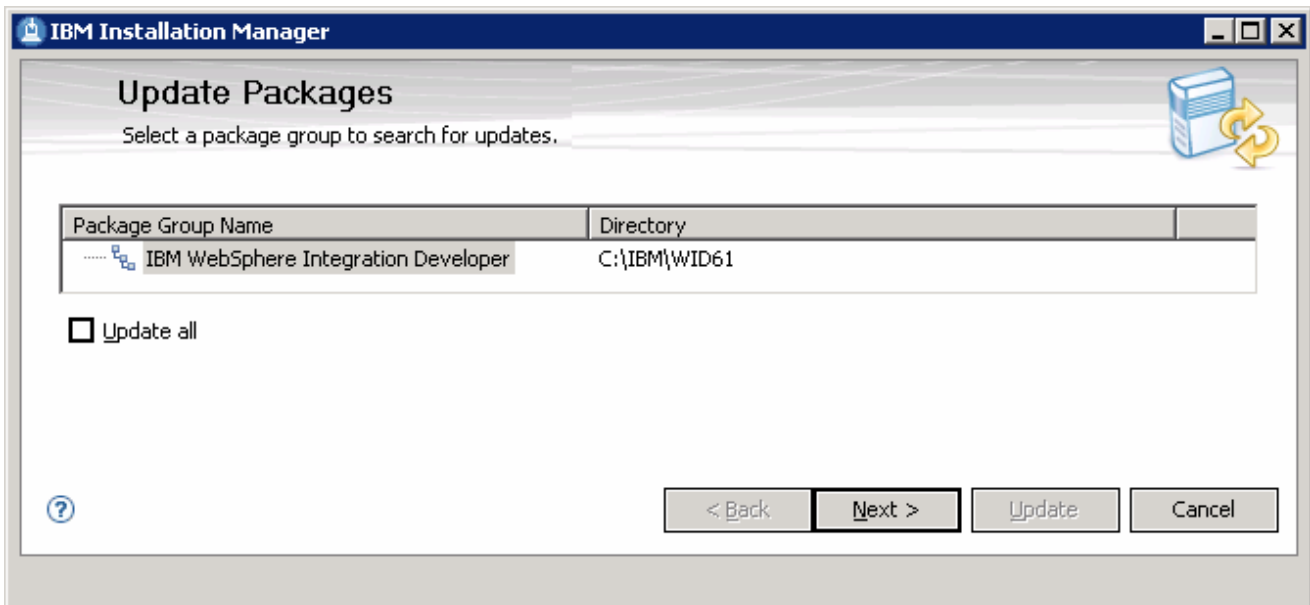


6. Click **OK** on the **Preferences** panel

IBM WEBSHERE BUSINESS MONITOR V6.1 – LAB EXERCISE



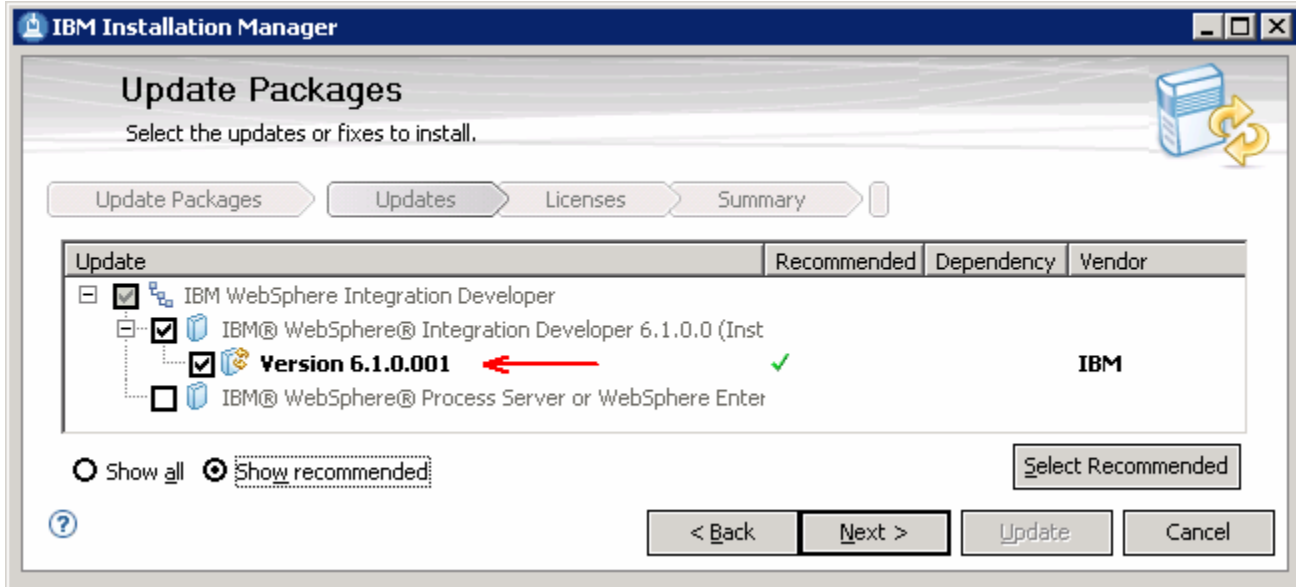
___ 7. Now click the **'Update Packages'** link. The **'Update Packages'** panel of the Installation Manager is launched



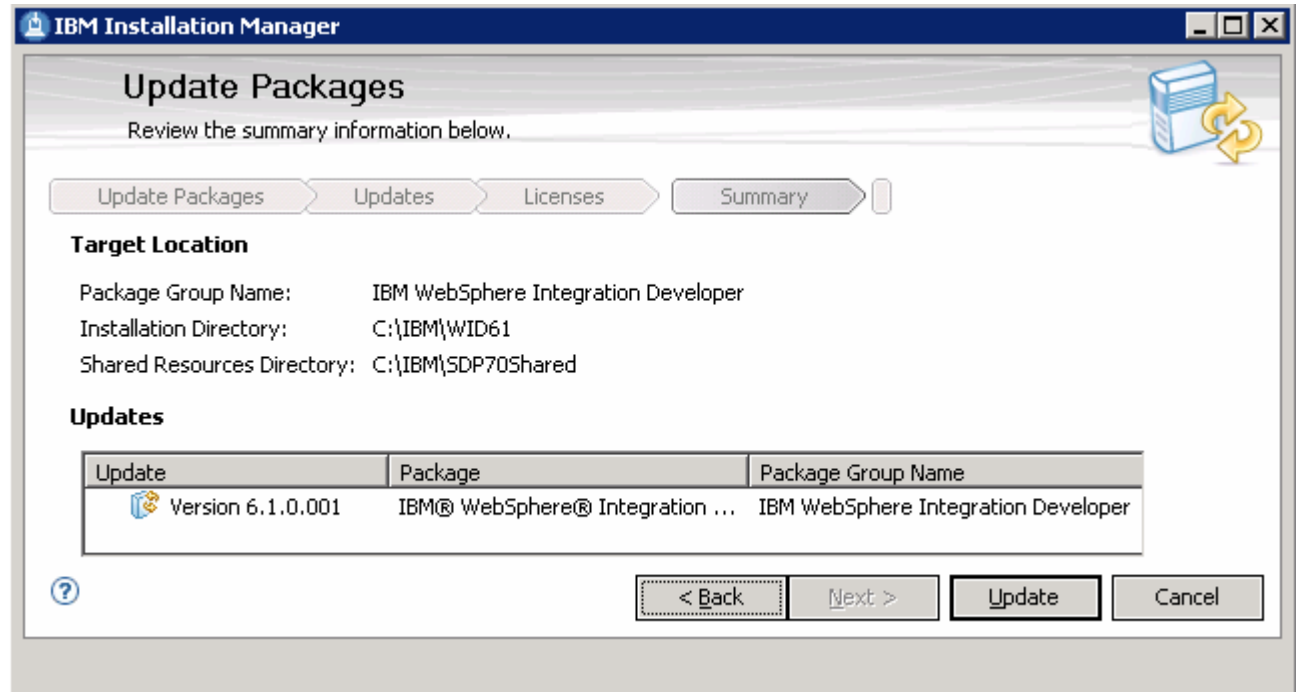
___ 8. Select **'IBM WebSphere Integration Developer'** as the package group and click **Next**

___ 9. In the following panel, ensure the iFix of version 6.1.0.001 is selected

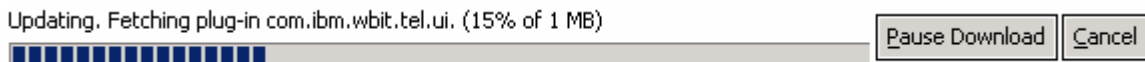
IBM WEBSHERE BUSINESS MONITOR V6.1 – LAB EXERCISE



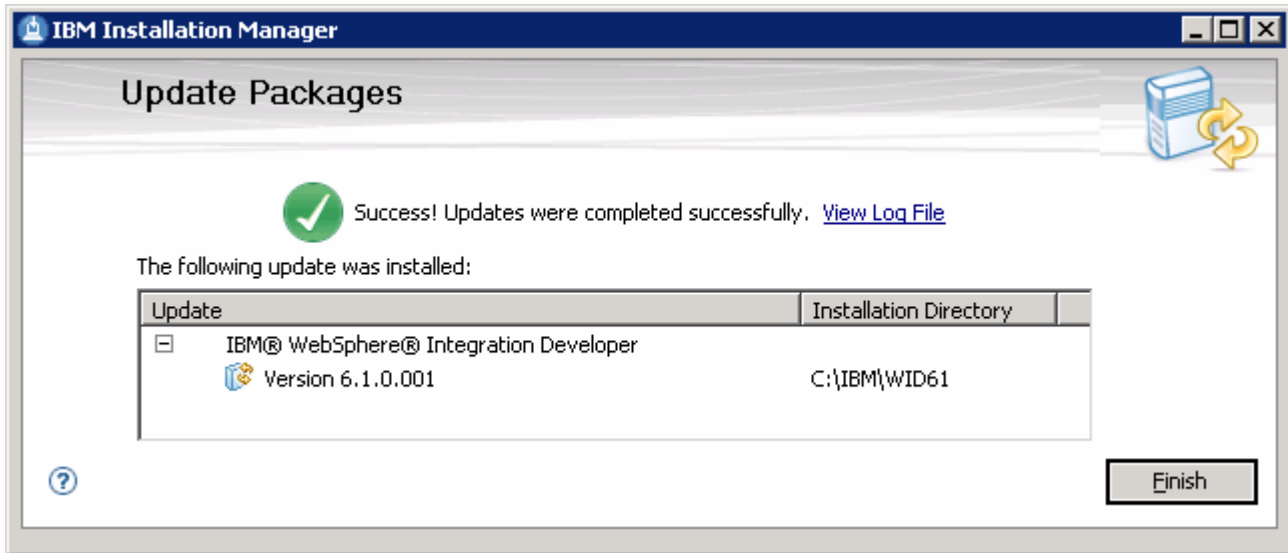
- ___ 10. Click **Next**
- ___ 11. In the following panel, read the license agreements. If you agree to the terms, select the radio button next to **"I accept the terms in the license agreements"** and Click **Next**
- ___ 12. In the following panel, review the installation summary information



- ___ 13. Click the **Update** button. The WebSphere Integration Developer update progresses



IBM WEBSHERE BUSINESS MONITOR V6.1 – LAB EXERCISE

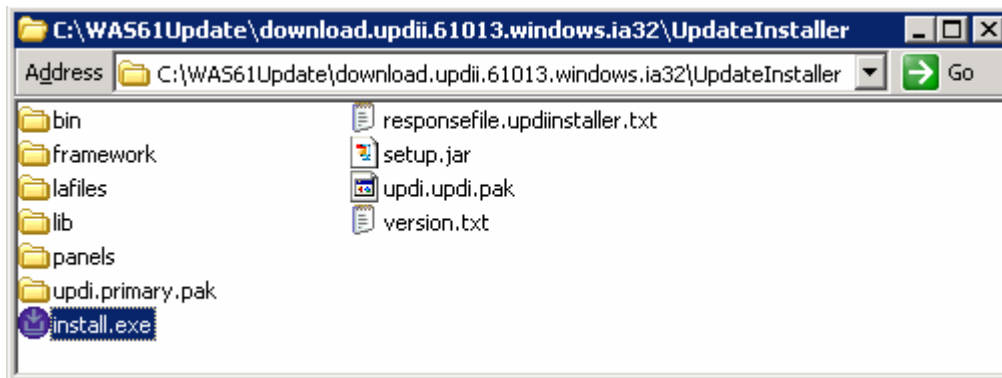


- ___ 14. Click **Finish** once the installation is complete
- ___ 15. Close the Installation Manager

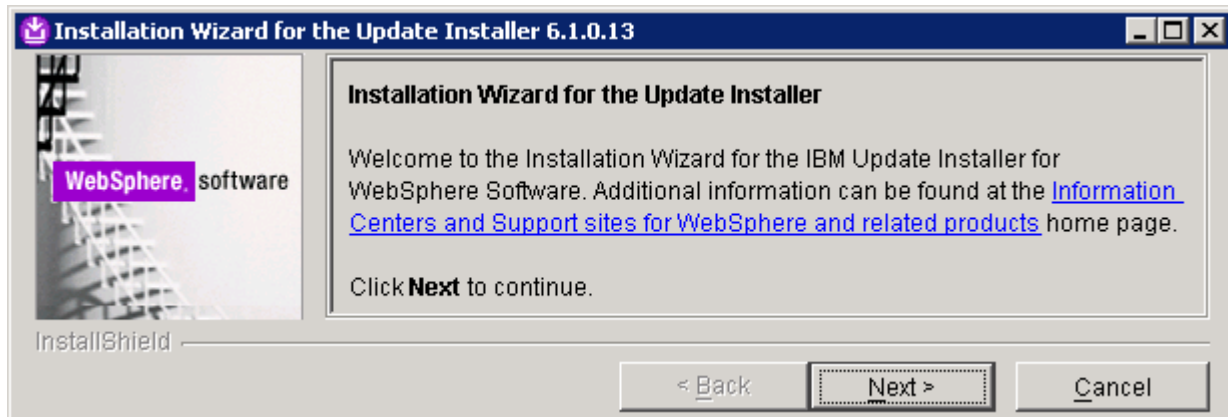
Appendix 1: Installing the Update Installer for WebSphere Software

The Update Installer for WebSphere Software has a new installation program for Version 6.1, Installation Wizard for the Update Installer. The Update Installer now uses the Common Install Engine for WebSphere Software.

- ___ 1. Obtain the WebSphere Update Installer file; **download.updii.61013.windows.ia32.zip** and extract it to a temporary directory
- ___ 2. To install the Update Installer, navigate to the directory **UpdateInstaller** directory and double click on **install.exe** to run the installer

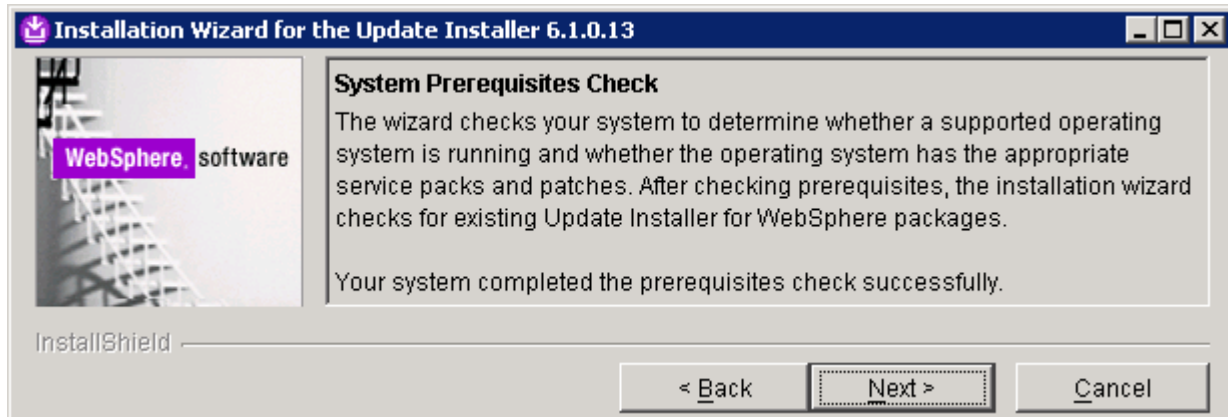


- ___ 3. Read the instructions on the Welcome screen

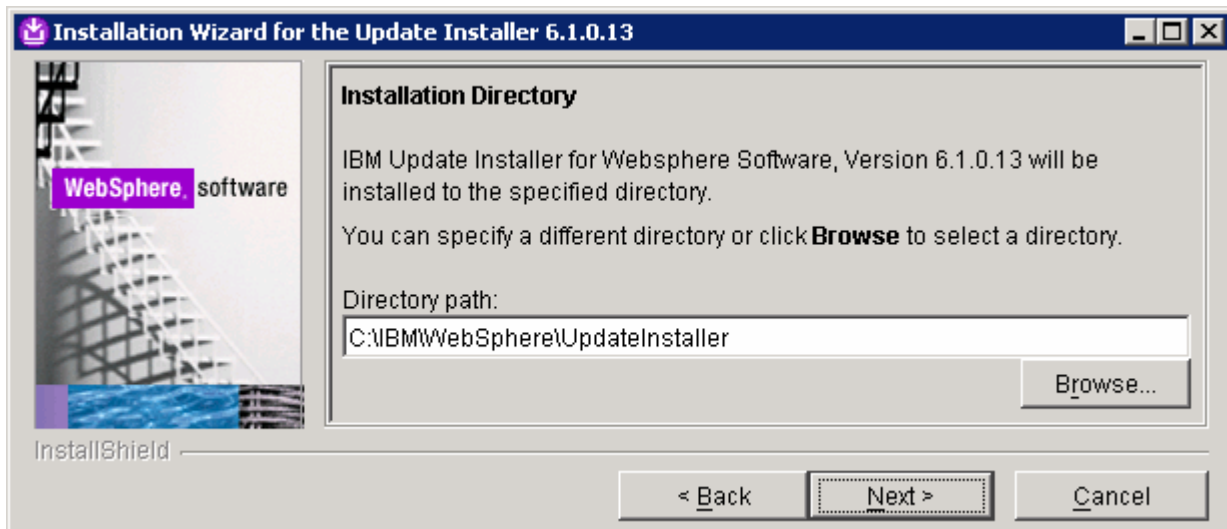


- ___ 4. Click **Next**
- ___ 5. In the following panel, read the license agreement and select the radio button next to **I accept both the IBM and non-IBM terms** and click **Next**
- ___ 6. The installation wizard runs the system prerequisite check

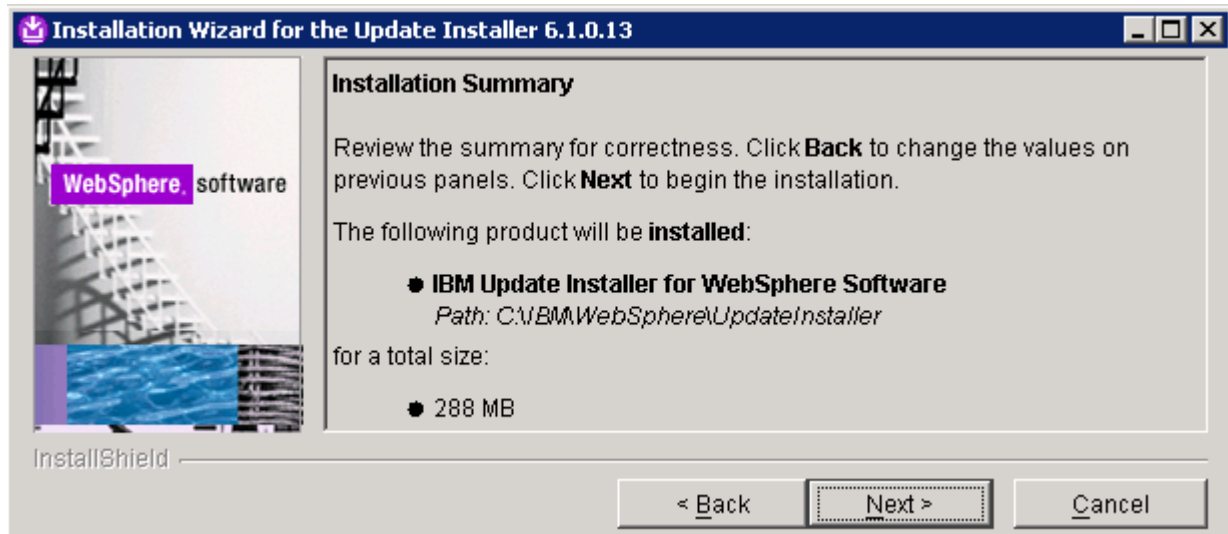
IBM WEBSHERE BUSINESS MONITOR V6.1 – LAB EXERCISE



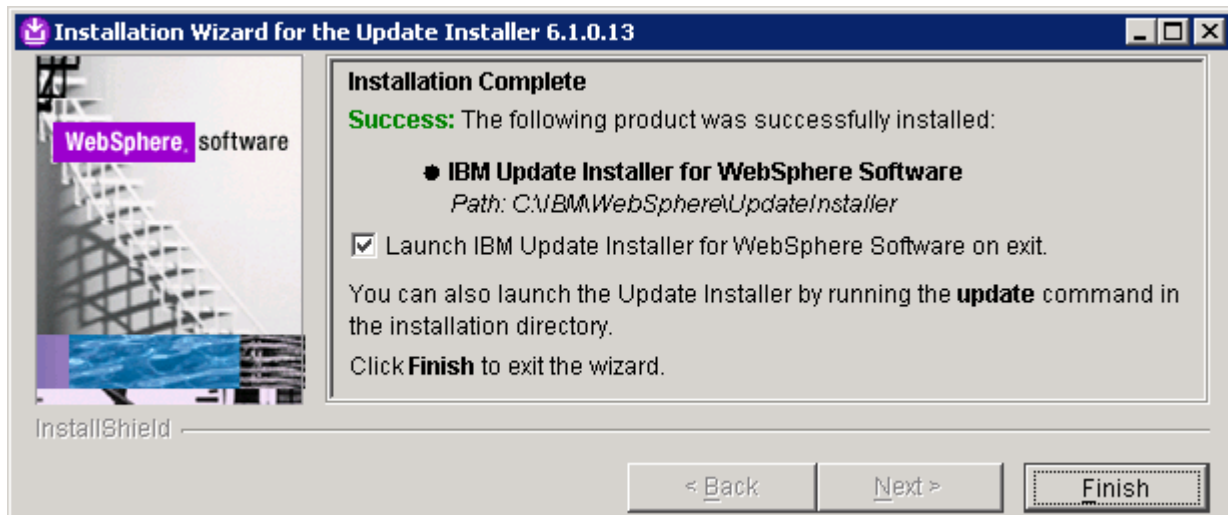
- ___ 7. Click **Next**
- ___ 8. Click the **Browse** button to set the installation path to **C:\IBM\WebSphere\UpdateInstaller**



- ___ 9. Click **Next**
- ___ 10. In the following panel, review the installation summary



- ___ 11. Click **Next** to continue with the installation
- ___ 12. Once the installation is complete, ensure the check box next to **Launch IBM Update Installer for WebSphere Software on exit**



- ___ 13. Click **Finish**. The IBM Update Installer is launched

Appendix 2: Uninstalling the Monitor Development Toolkit V6.1

Uninstalling the WebSphere Business Monitor Development Toolkit V6.1 is made possible using the IBM Installation Manager V1.1. The Installation Manager gives you the flexible options depending on what can be uninstalled. The following are the scenarios:

Scenario 1: Uninstall the WebSphere Business Monitor Development Toolkit V6.1

Choosing the IBM Installation Manager's **Uninstall Packages** option, the WebSphere Business Monitor Development Toolkit V6.1 can be uninstalled, which removes both the Monitor Development Environment and the Monitoring Test Environment (if existing).

Scenario 2: Removing the Monitoring Test Environment only

Choosing the IBM Installation Manager's **Modify Packages** option, the Monitoring Test Environment profile can be removed.

To uninstall the WebSphere Business Monitor Development Toolkit V6.1 and its components depending on the situation, follow the instructions below:

Scenario 1: Uninstall the WebSphere Business Monitor Development Toolkit V6.1

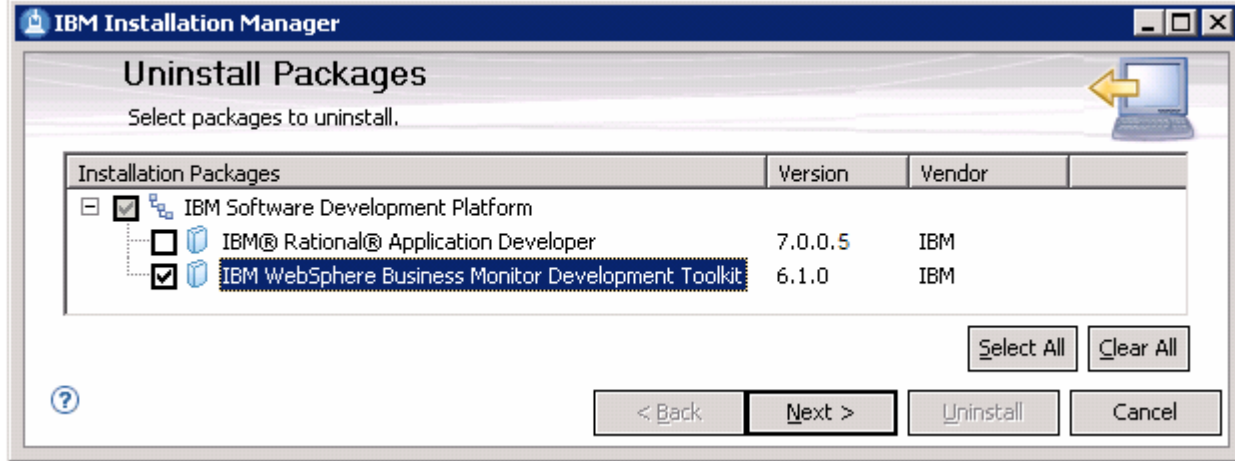
Prerequisite: Stop the Monitoring Test Environment server before proceeding further.

1. Launch the IBM Installation Manager from **Start → Programs → IBM Installation Manager → IBM Installation Manager**. This launches the Common Launchpad

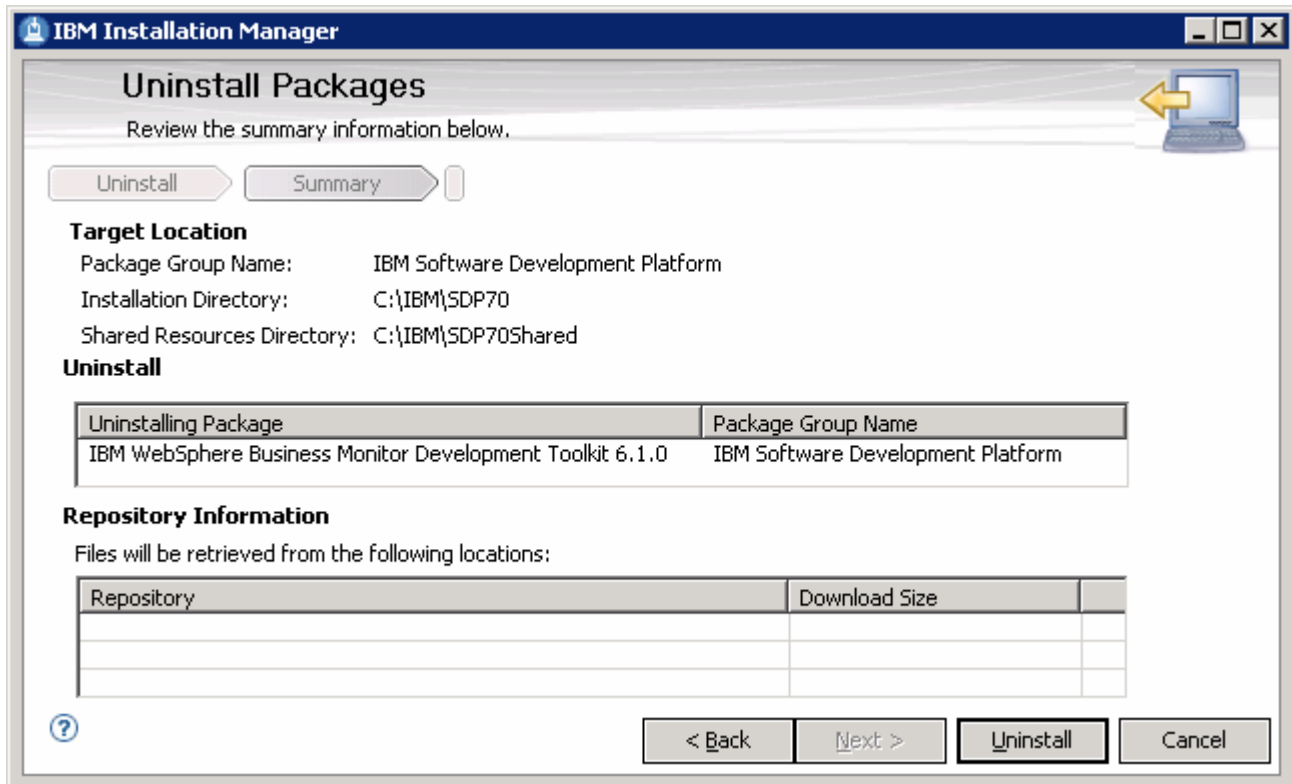


2. Click on the **Uninstall Packages** link. This the launches the IBM Installation Manager
3. In the following panel, select the check box next to "**IBM WebSphere Business Monitor Development Toolkit**"

IBM WEBSHERE BUSINESS MONITOR V6.1 – LAB EXERCISE



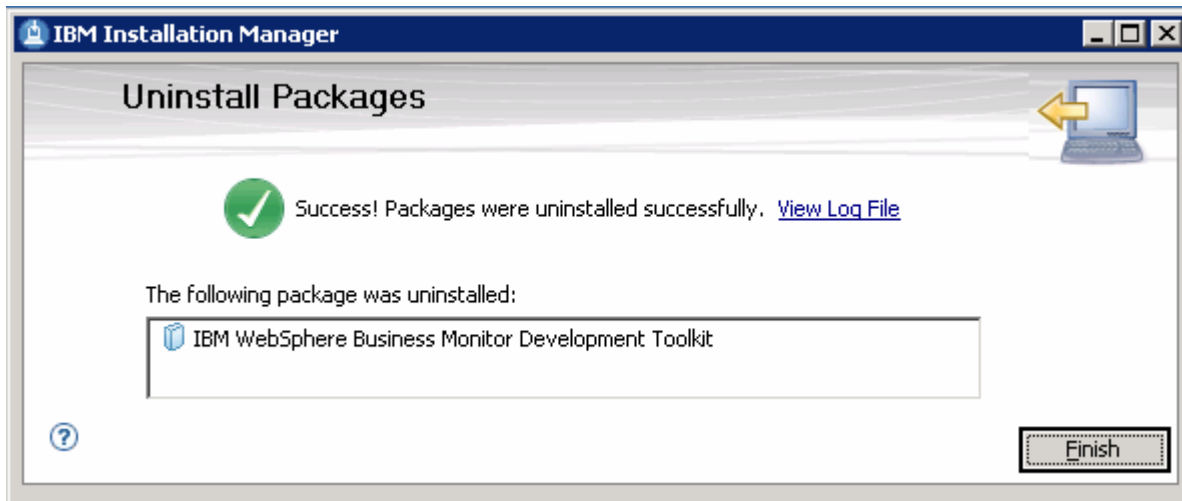
- ___ 4. Click **Next**
- ___ 5. In the following panel, review the uninstall summary



- ___ 6. Click the **Uninstall** button. The WebSphere Business Monitor Development Toolkit V6.1 uninstall progresses as shown below:



IBM WEBSPHERE BUSINESS MONITOR V6.1 – LAB EXERCISE



___ 7. Click **Finish** to close the Installation Manager

Scenario 2: Removing the Monitoring Test Environment only

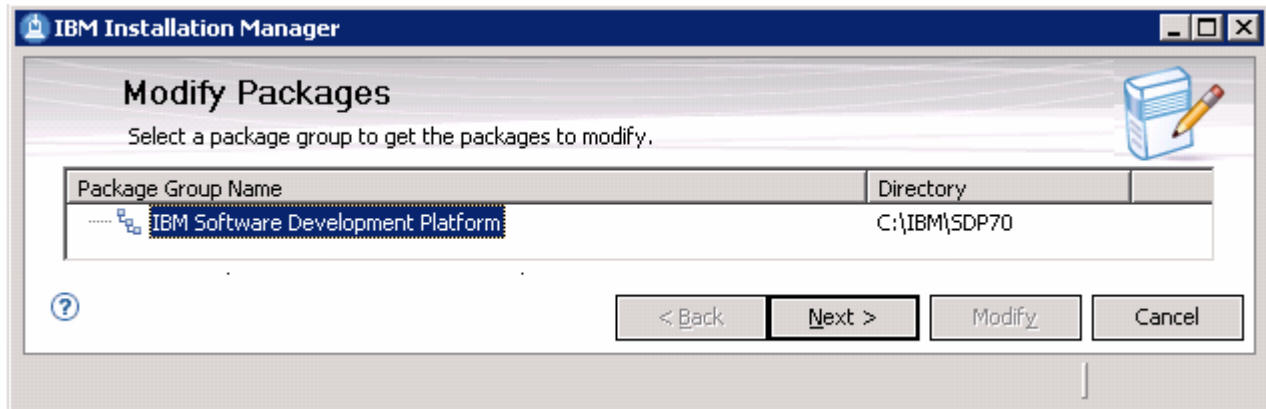
___ 1. Launch the IBM Installation Manager from Start → Programs → IBM Installation Manager → IBM Installation Manager. This launches the Common Launchpad



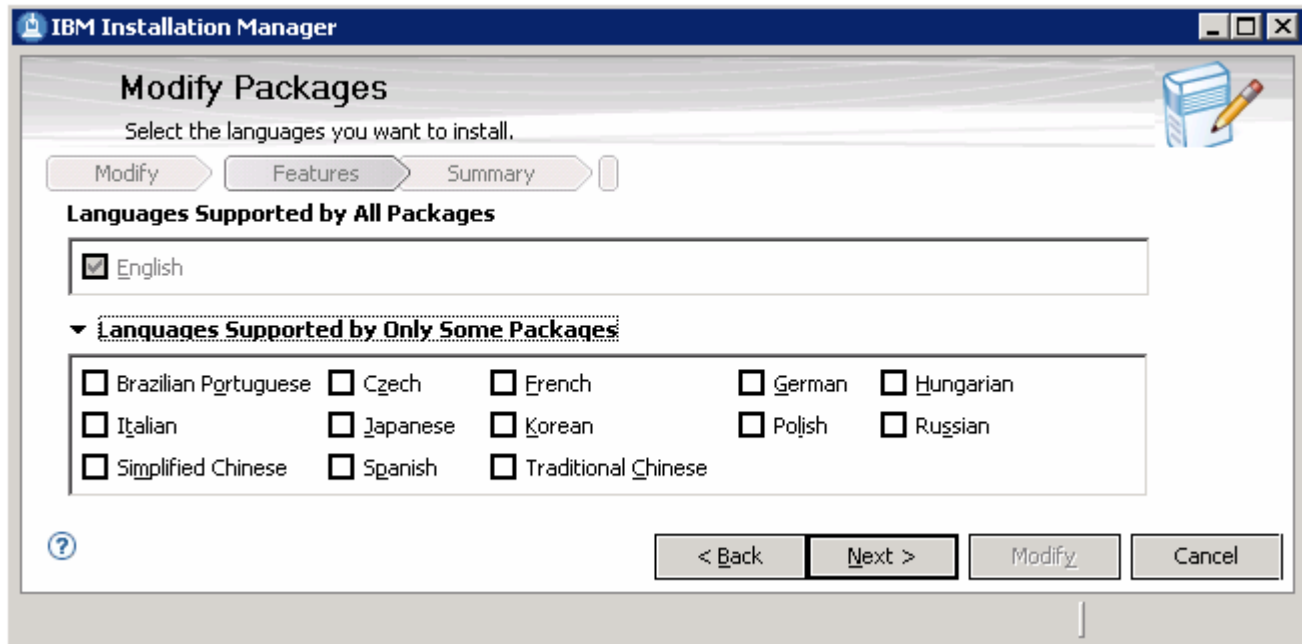
___ 2. Click on the **Modify Packages** link. This the launches the IBM Installation Manager

___ 3. In the following panel, select the **IBM Software Development Platform** as the **Package Group Name**

IBM WEBSHERE BUSINESS MONITOR V6.1 – LAB EXERCISE

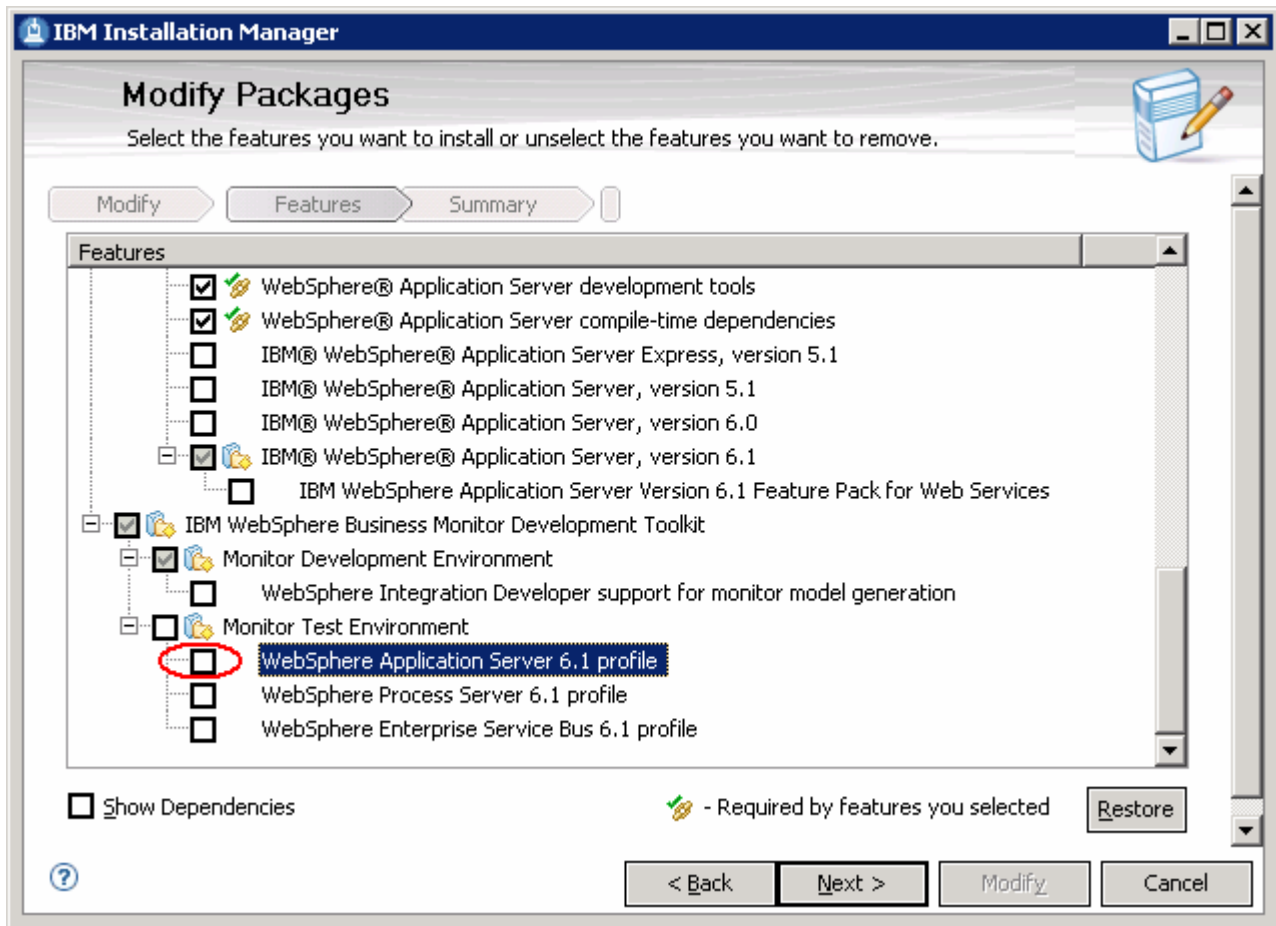


- ___ 4. Click **Next**
- ___ 5. In the following panel, select the desired language



- ___ 6. Click **Next**
- ___ 7. In the following panel, clear the check box for the **WebSphere Application Server 6.1 profile** feature located under **IBM WebSphere Business Monitor Development Toolkit → Monitor Test Environment**

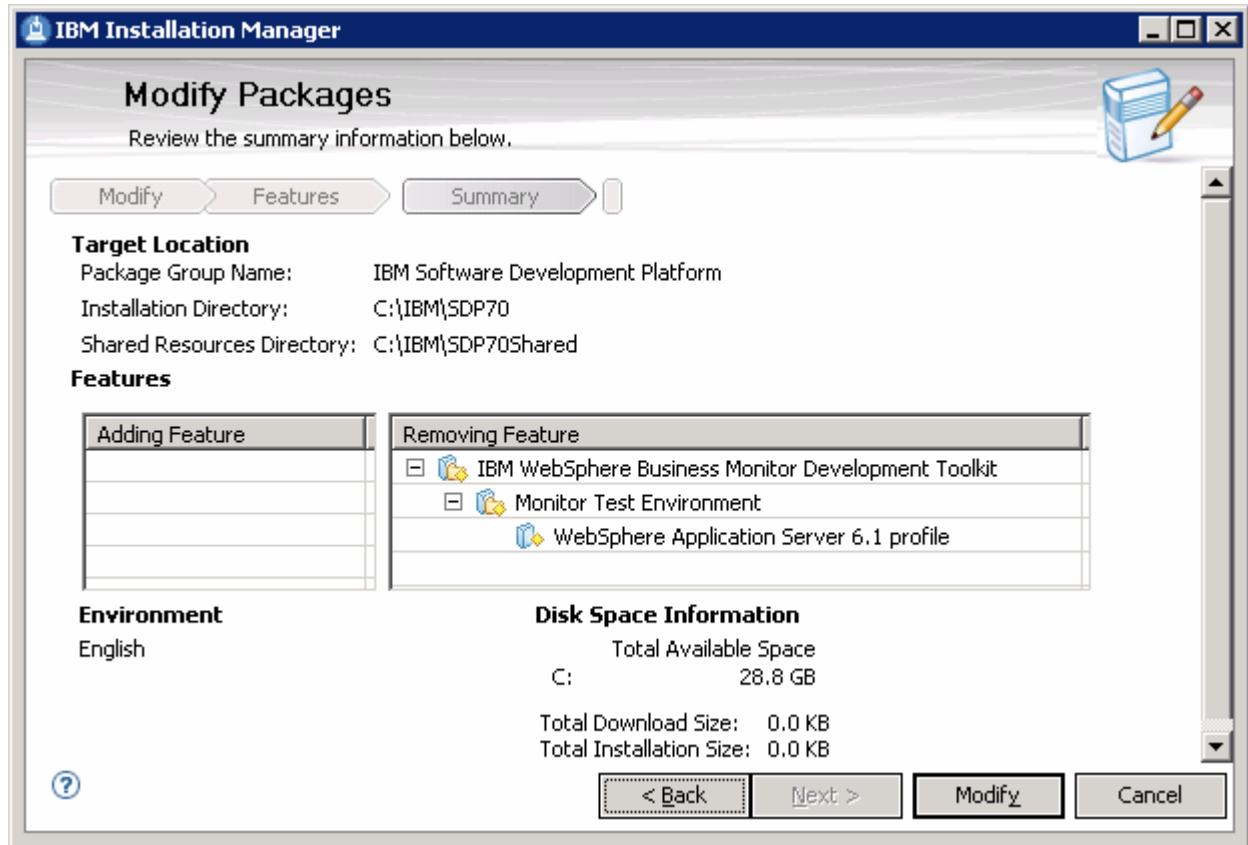
IBM WEBSHERE BUSINESS MONITOR V6.1 – LAB EXERCISE



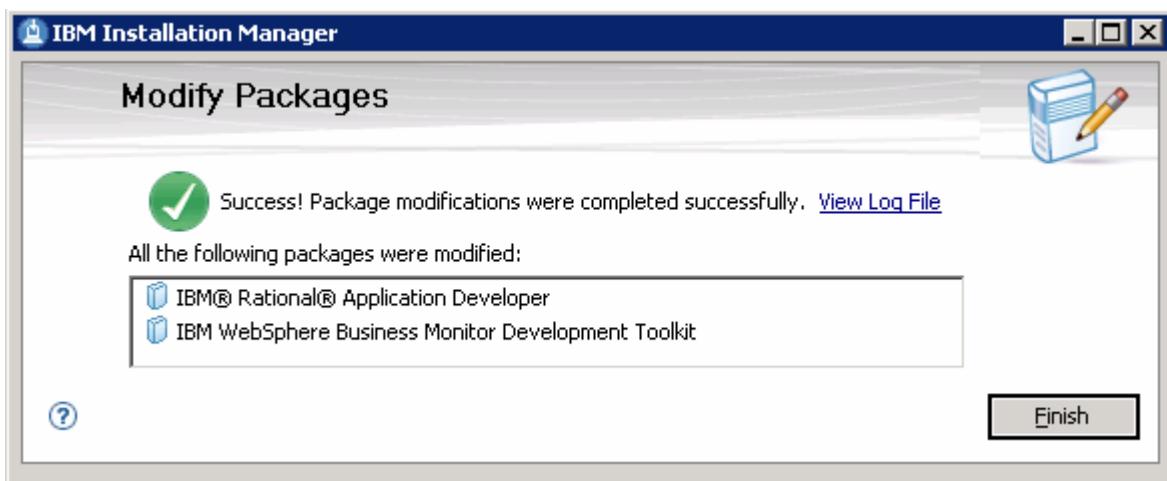
___ 8. Click **Next**

___ 9. Review the “Modify Packages” summary in the following panel

IBM WEBSHERE BUSINESS MONITOR V6.1 – LAB EXERCISE



10. Click the **Modify** button to remove the Monitor Server profile



11. Click **Finish** to close the Installation Manager

Appendix 3: Troubleshooting

1. Useful files for debugging initial installation problems

- a. Location : <WAS_HOME>\logs\wbm\install or <WPS_HOME>\logs\wbm\install
 - i. log.txt
 - ii. wbm_<TIMESTAMP>_install_out.log
 - iii. wbm_<TIMESTAMP>_install_trace.log
 - iv. wbm_<TIMESTAMP>_<PROFILE NAME>_augment_out.log
 - v. wbm_<TIMESTAMP>_<PROFILE NAME>_augment_trace.log
- b. Location : <WAS_HOME>\logs\wbm or <WPS_HOME>\logs\wbm
 - i. Installconfig.log

2. Useful files for debugging Monitor Server installation problems

- a. <WBM_PROFILE_HOME>\logs
 - i. MonitorServerResourceInstall.log
 - ii. configWBMSIB.log
 - iii. enableIdentityAssertion.log
 - iv. InstallActionManager.log
 - v. InstallDashboard.log
 - vi. InstallRestServices.log
 - vii. installVmmService.log
 - viii. installCbebrowser.log
 - ix. installWBMISCPortlet.log
 - x. configRESTSecurity.log
 - xi. installHumanTask.log
 - xii. InstallABXDashboard.log
 - xiii. wsadmin.traceout

3. Useful files for debugging Monitor Server runtime problems

- a. <WBM_PROFILE_HOME>\logs\server1
 - i. SystemOut.log
 - ii. SystemErr.log

This page is left intentionally blank.