

Installing WebSphere Business Monitor V6.1

Advanced installation

Scenario 1 - Two machine topology

What this exercise is about	2
Lab requirements	2
What you should be able to do	2
Exercise Instructions	4
Introduction	5
Part 1: Preparing for the Monitor Server installation (Machine 1).....	7
Part 2: Installing Monitor Server and Web-based Dashboards.....	9
Part 3: Preparing for Portlet-based dashboards installation (Machine 2)	22
Part 4: Installing Portlet-based dashboards including Alphablox views (Machine 2)	23
What you did in this exercise	34
Task 1: Install WebSphere Portal Server V6.0 and update to V6.0.1.1.....	35
1. Updating WebSphere Application Server V6.0.2.9 base to V6.0.2.17	46
2. Updating WebSphere Portal Server V6.0 with fix pack 6.0.1.1	51
Task 2: Deploy human tasks Monitor model and configure connections for Web-based dashboards.....	56
Task 3: Human tasks configuration for portlet-based dashboards	58
Appendix 1: Uninstalling WebSphere Business Monitor and its prerequisites	60
Appendix 2: Troubleshooting	63

What this exercise is about

The objective of this lab is to provide instructions for installing WebSphere Business Monitor V6.1 product in a two machine scenario using the **advanced** installation type.

Scenario 1: Two machine scenario

- Machine 1 :- Monitor Server and its components, Web-based dashboards including Alphablox, Database server with MONITOR database
- Machine 2 :- Portlet-based dashboards including Alphablox views

Lab requirements

List of system and software required for the student to complete the lab.

- WebSphere Business Monitor V6.1
- WebSphere Application Server V6.1.0.13
- WebSphere Portal Server V6.0.1.1
 - WebSphere Portal Server V6.0
 - WebSphere Application Server V6.0.2 Fix Pack 17
 - WebSphere Application Server V6.0.2 JDK Fix Pack 21
 - WebSphere Portal Server cumulative fix pack 6011
- DB2 ESE V8.2.6 or V9.1
- Alphablox V9.5
- Information Center

What you should be able to do

At the end of this lab you should be able to do the following based on the options you choose:

- Install WebSphere Application Server V6.1.0.13 on monitor server machine
- Install WebSphere Portal Server V6.0.1.1 for portlet-based dashboards on portal-based dashboards machine
- Install Alphablox V9.5 on monitor server machine dashboards and portlet-based dashboards machine
- Create MONITOR database local to monitor server
- Information Center

IBM WEBSHERE BUSINESS MONITOR 6.1 – LAB EXERCISE

- Install WebSphere Business Monitor Server with web-based dashboards including Alphablox views on machine one and portlet-based dashboard including Alphablox views on the second

Exercise Instructions

Some instructions in this lab may be Windows® operating-system specific. If you plan on running the lab on an operating-system other than Windows, you will need to run the appropriate commands, and use appropriate files (.sh or .bat) for your operating system. The directory locations are specified in the lab instructions using symbolic references, as follows:

Reference variable	Windows location	Description
Monitor stand-alone environment (Machine 1)		
<WAS61_HOME>	C:\IBM\WebSphere\MonServer	
<WBM_PROFILE_HOME>	<WAS61_HOME>\profiles\WBMon01	
<ALPHABLOX_HOME>	<WBM_PROFILE_HOME>\Alphablox_server1	
<INFO_CENTER>	<WAS61_HOME>\infocenter.wbm	
<DB2_HOME>	C:\IBM\DB2\SQLLIB	
Portal dashboard (Machine 2)		
<WAS602_HOME>	C:\IBM\WebSphere\AppServer	
<WP_PROFILE_HOME>	C:\IBM\WebSphere\profiles\wp_profile	
<PORTAL_HOME>	C:\IBM\WebSphere\PortalServer	
<INFO_CENTER>	<PORTAL_HOME>\infocenter.wbm	
<ALPHABLOX_HOME>	<WP_PROFILE_HOME>\Alphablox	

Windows users' note: When directory locations are passed as parameters to a Java™ program such as EJBdeploy or wsadmin, it is necessary to replace the backslashes with forward slashes to follow the Java convention.

Introduction

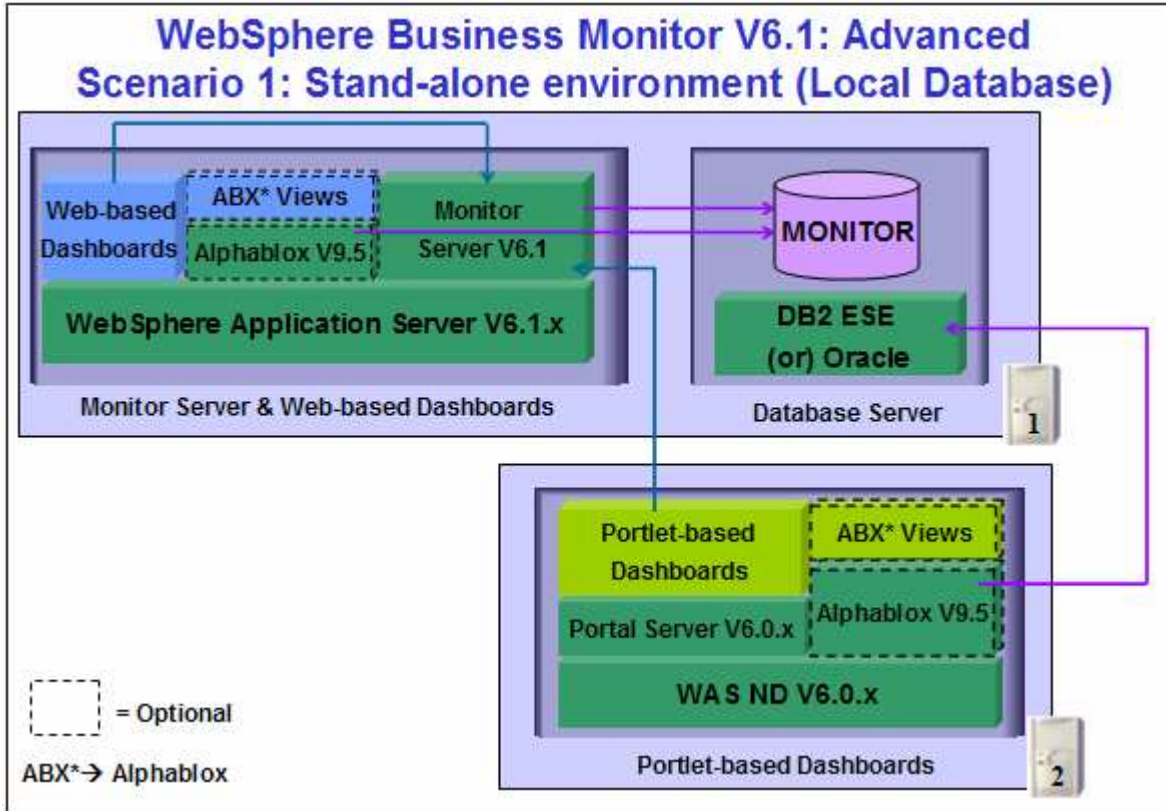
WebSphere Business Monitor V6.1 advanced installation allows you to customize the installation of the Monitor components on one or multiple machines and it can be used for small to large production systems.

WebSphere Application Server V6.1 is the only mandatory prerequisite for WebSphere Business Monitor V6.1 installation. In an advanced installation type, the InstallShield wizard installs the WebSphere Application Server V6.1 and silently uses the customized 'Profile Management Tool (PMT)' to create and augment the WebSphere Business Monitor profiles. The advanced installation type supports the standard profile management for network deployment flexibility.

To install portlet-based dashboards, WebSphere Portal Server V6.0.1.1 must be installed as a prerequisite. The Installation wizard for advanced installation type does not let you select the option to install the portlet based dashboard with the Alphablox views component unless the Portal Server installation is detected. WebSphere Business Monitor V6.1 installation supports Derby (Cloudscape V10), DB2 and Oracle for MONITOR database creation. However Derby is not listed as a database option if the Alphablox features for portlet-based dashboards component is selected for installation. An option to generate the database scripts is provided depending on the database environment to create the MONITOR database.

The following diagram depicts how the 'Advanced' installation type takes advantage of installing Monitor Server, Web-based dashboards including Alphablox views and local MONITOR database in a standalone environment on machine one and the portlet-based dashboards including Alphablox views on the second. In this lab, the InstallShield wizard uses the DB2 Type 2 database driver for the monitor server and DB2 Type 4 driver for the portlet-based dashboard to configure resources to make connections to the MONITOR database. In this scenario, the DB2 server is installed as a prerequisite on the monitor server machine.

IBM WEBSHERE BUSINESS MONITOR 6.1 – LAB EXERCISE



Part 1: Preparing for the Monitor Server installation (Machine 1)

In this part of the lab, the pre-requisite software is obtained and extracted in such a way that an on-disk WebSphere Business Monitor V6.1 installation image is created.

Obtain the pre-requisite software and extract in such a way to create the correct on-disk structure for the Launchpad to run

____ 1. The following are the installation files needed to install the WebSphere Business Monitor V6.1

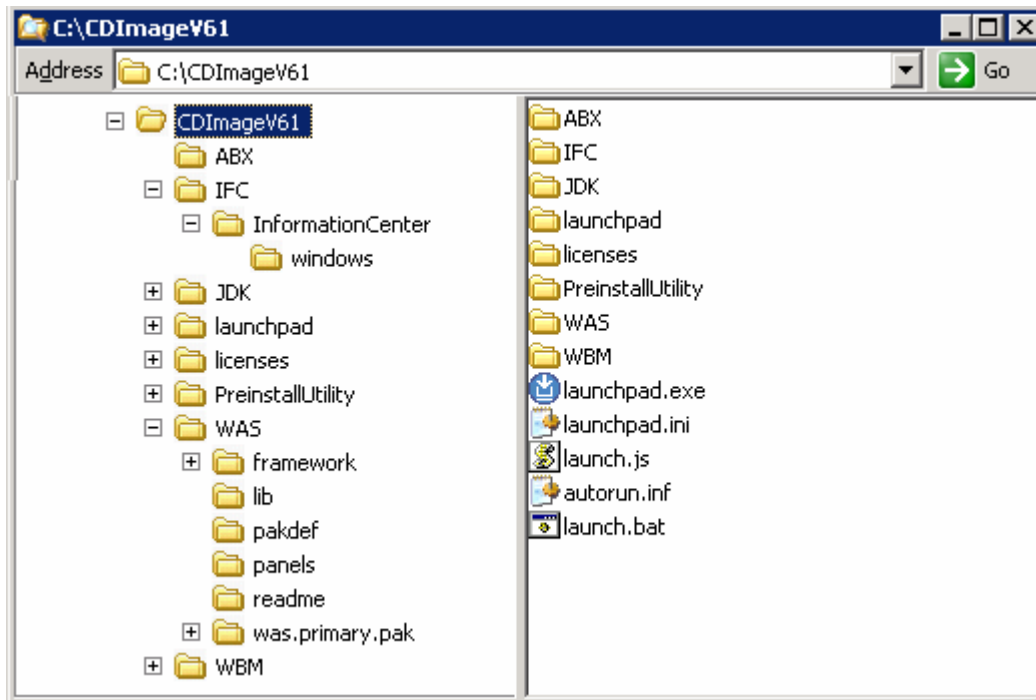
Product Name	File Name
WebSphere Business Monitor V6.1 Base Components for Windows 2003 (Monitor V61 Setup CD)	C186LEN.zip
WebSphere Application Server Network Deployment V6.1.0.13 for Windows	C187CML.zip
Alphablox V9.5 for Windows, AIX	C187GML.tar.gz
Information Center for Windows	IBM_Help_Win32.zip
DB2 Enterprise Server Edition V8.2.6 and V9.1 for Windows	ESE_v826.zip
	ESE_v91.zip

____ 2. Download all the installation archives to a directory for example : C:\MonitorDriversV61\

___ a. Extract all of the archives into a directory named for example, C:\CDimageV61\ to create an on-disk image and confirm that the directory structure was extracted correctly. It should appear similar to the picture shown below:

Note: Do not extract the **IBM_Help_Win32.zip** file. The Monitor installer expects a .zip file at <Monitor_Install_Image_Directory>\IFC\InformationCenter\windows location.

IBM WEBSHERE BUSINESS MONITOR 6.1 – LAB EXERCISE



Note: Pre-requisite image location and folder name:

Executables should be placed directly under the directories specified below, so that 'install.exe' or 'install.sh' can be silently launched. Adding 'subdirectories' will prevent your installation from completing.

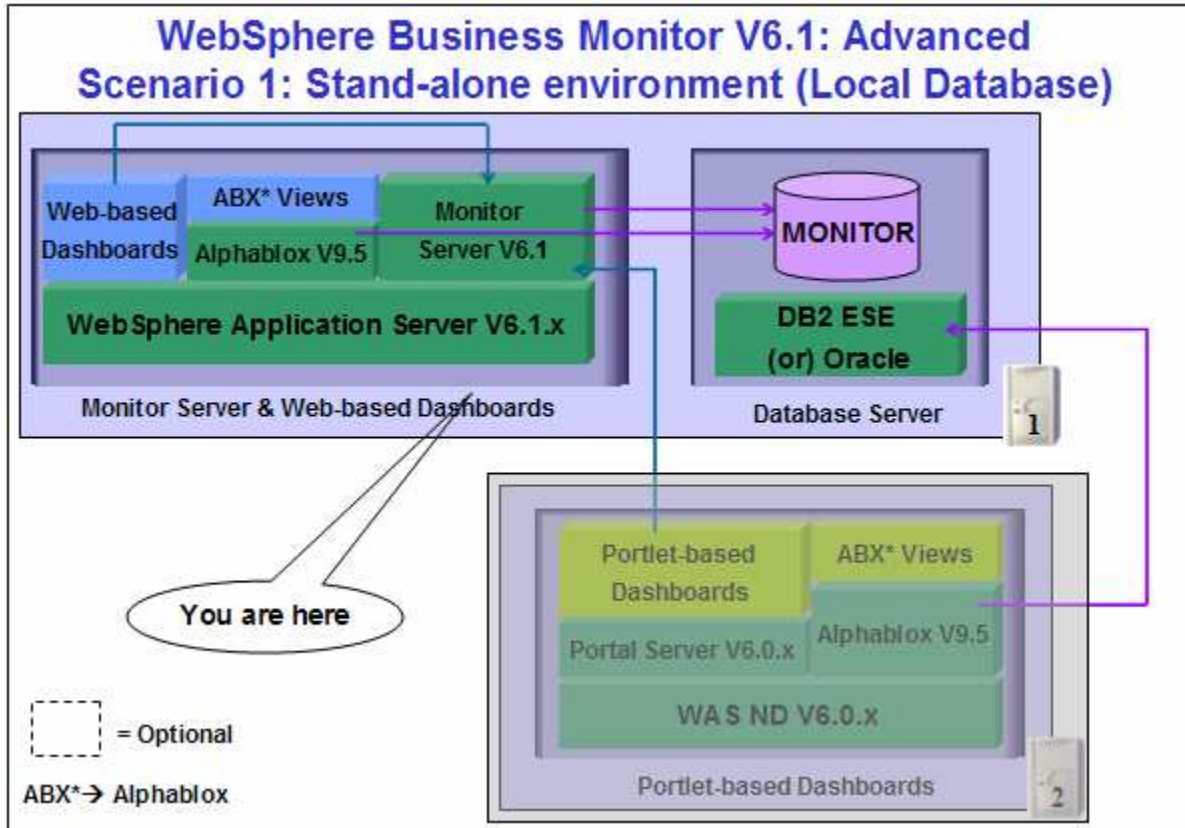
InfoCenter - <Monitor_Install_Image_Directory>\IFC\InformationCenter\windows\IBM_Help_Win32.zip

Alphablox V9.5- <Monitor_Install_Image_Directory>\ABX\install.exe

WebSphere Application Server V6.1 - <Monitor_Install_Image_Directory>\WAS\

Part 2: Installing Monitor Server and Web-based Dashboards

In this part of the lab, you will choose the option to install only the Monitor server, light weight web-based dashboards including Alphablox views in a standalone environment and create a local MONITOR database on a local DB2 server using the InstallShield wizard on machine one. You can also choose between DB2 Type 2 or Type 4 database drivers to make connections to the MONITOR database. In this lab, you will use DB2 as the database environment, Type 2 driver for the monitor server and the web-based dashboard for connections to the MONITOR database and Type 4 driver for the portlet-based dashboard for connections to the MONITOR database.



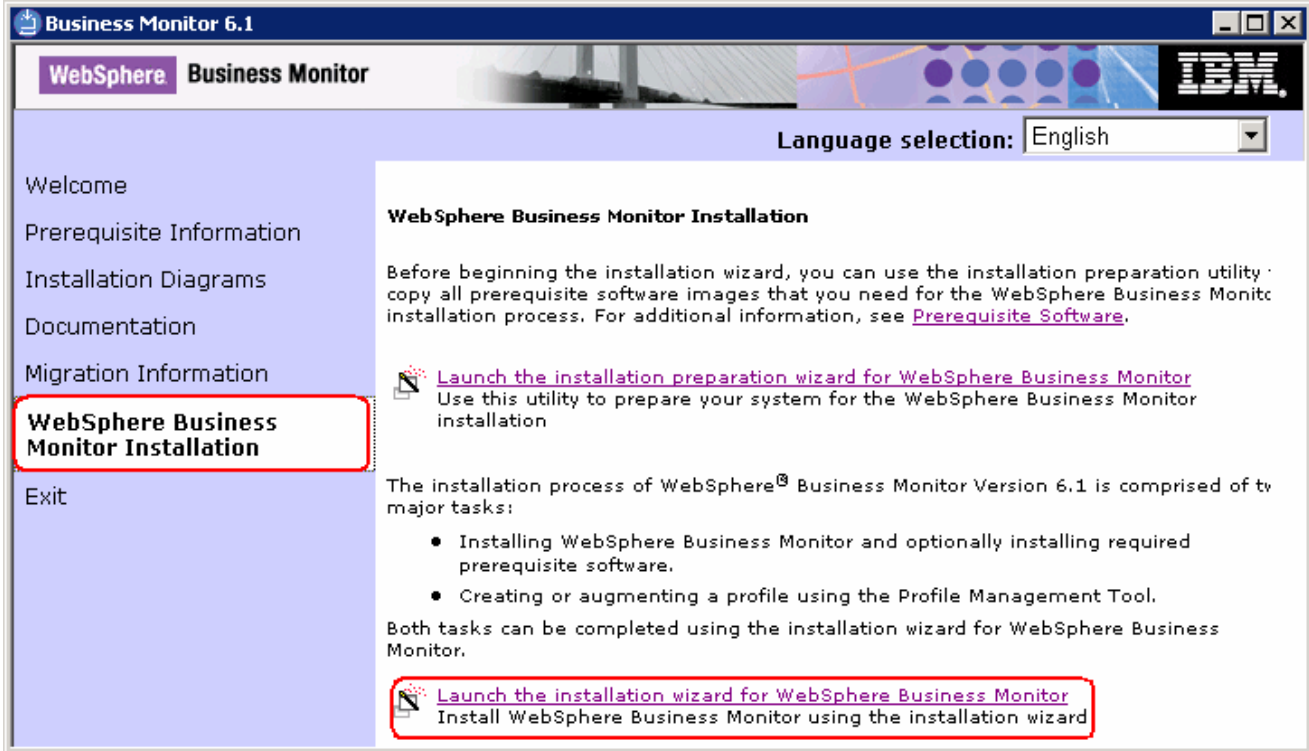
In this part of the lab on machine one, the InstallShield wizard installs the WebSphere Application Server V6.1.0.13 and silently uses the customized Profile Management Tool to create and augment the WebSphere Business Monitor stand-alone profile, installs Monitor Server, light weight Web-based dashboards, Alphablox V9.5 instance, and creates a MONITOR database on a local DB2 environment.

Prerequisite: If you plan to use DB2 for the MONITOR database, visit the DB2 information center to install and configure DB2 ESE V8.2.6 fix pack 13 or V9.1.

IBM WEBSHERE BUSINESS MONITOR 6.1 – LAB EXERCISE

Follow the instructions below to complete the WebSphere Business Monitor V6.1, Advanced installation:

- 1. From the directory where all the pre-requisites and the Monitor driver are extracted (Example:- C:\CDImageV61\), double click on **launchpad.exe** to launch the Common Launchpad program



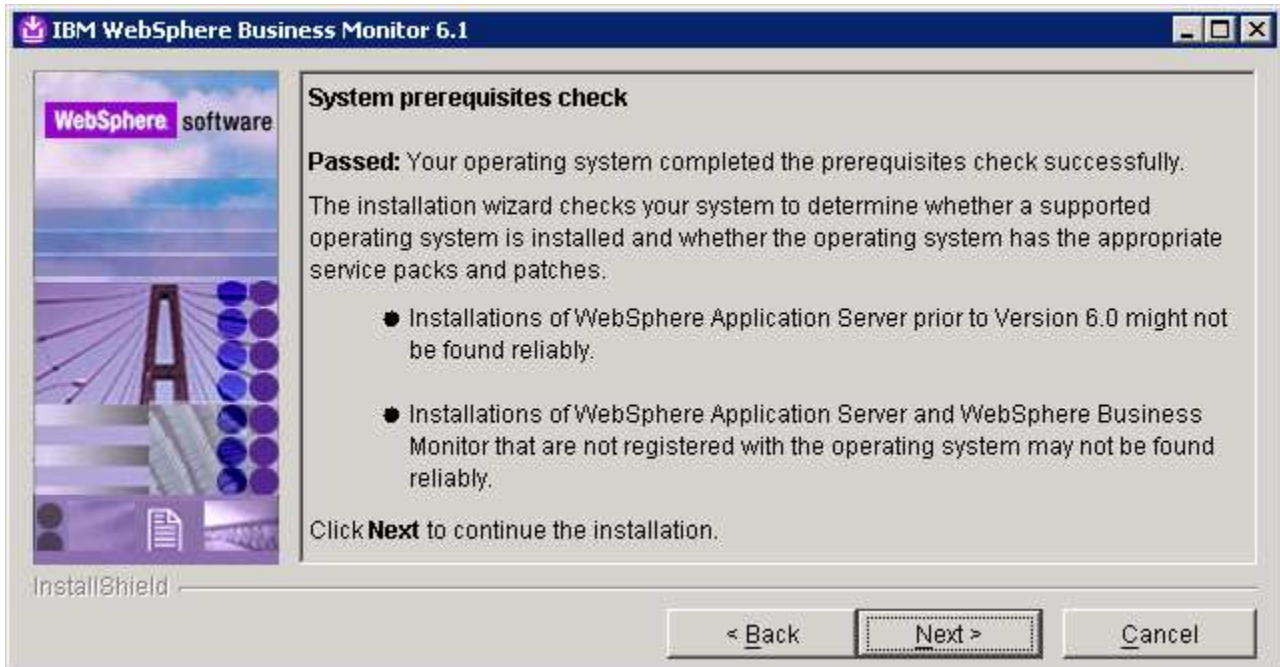
- 2. On the welcome screen, click on the **WebSphere Business Monitor Installation** link in the left pane and then click the '**Launch the installation wizard for WebSphere Business Monitor**' to the right. This launches the WebSphere Business Monitor V6.1 InstallShield wizard



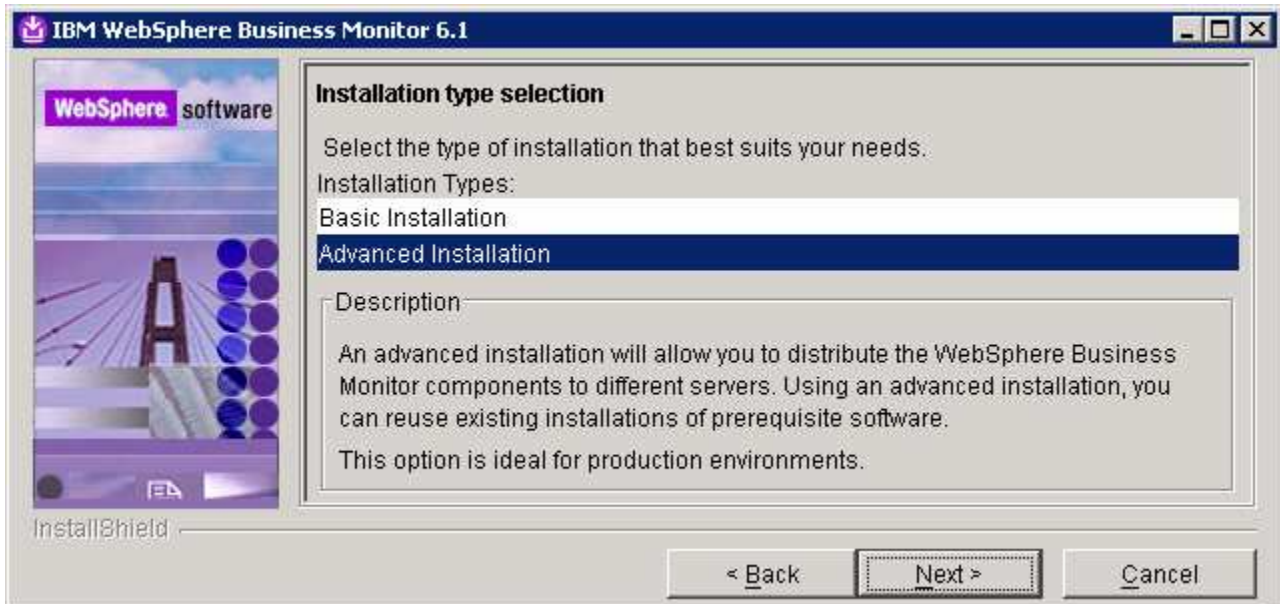
- 3. Click **Next**
- 4. In the following panel, read the license agreement. If you agree to the terms, select the radio button for '**I accept the both the IBM and the non-IBM terms**'

IBM WEBSHERE BUSINESS MONITOR 6.1 – LAB EXERCISE

- ___ 5. Click **Next**. The monitor installation program does an operating system prerequisite check and warns if the product installation is not supported
- ___ 6. In the following panel, read the '**System prerequisite check**' information



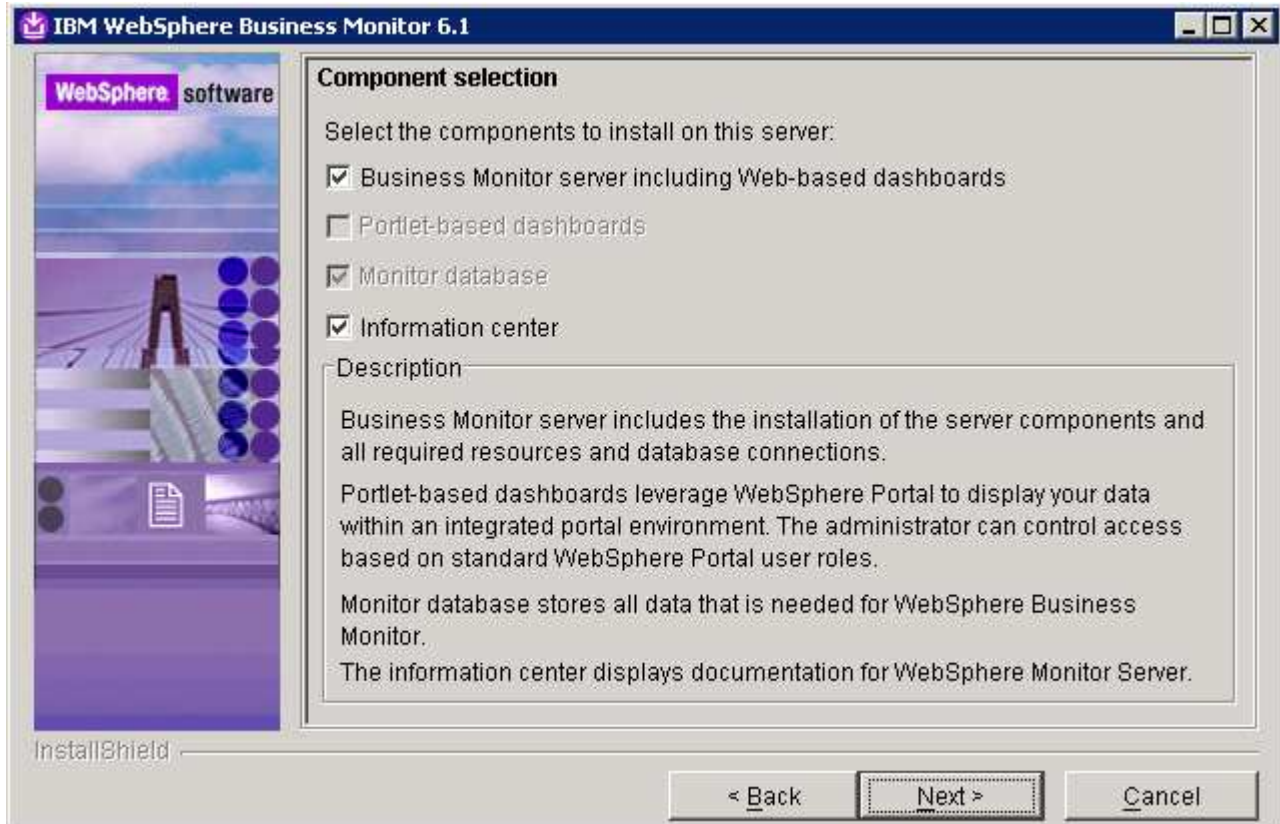
- ___ 7. Click **Next** to continue the installation
- ___ 8. In the following panel, select **Advanced Installation** as the **Installation Type**



- ___ 9. Click **Next**

IBM WEBSHERE BUSINESS MONITOR 6.1 – LAB EXERCISE

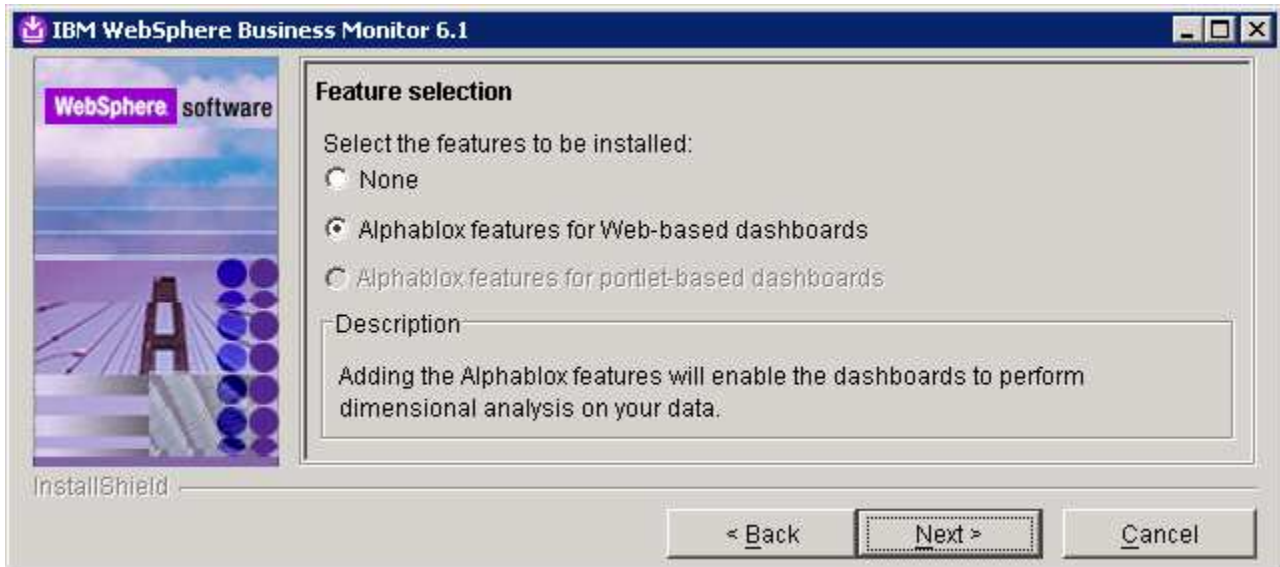
- ___ 10. In the following 'Component selection' panel, ensure the check box for '**Business Monitor server including Web-based dashboards**' is selected. The check box for '**Monitor database**' is selected by default and not editable, indicating that the monitor database creation is mandatory when the option to install the business monitor server including web-based dashboards is selected. Optionally select the check box for **Information Center** to install the Information Center



Note: The component selection for Portlet-based dashboards is enabled only if the Portal Server is available on this machine and is detected by the InstallShield wizard.

- ___ 11. Click **Next**
- ___ 12. In the following '**Feature selection**' panel, optionally select the radio button for '**Alphablox features for Web-based dashboards**'.

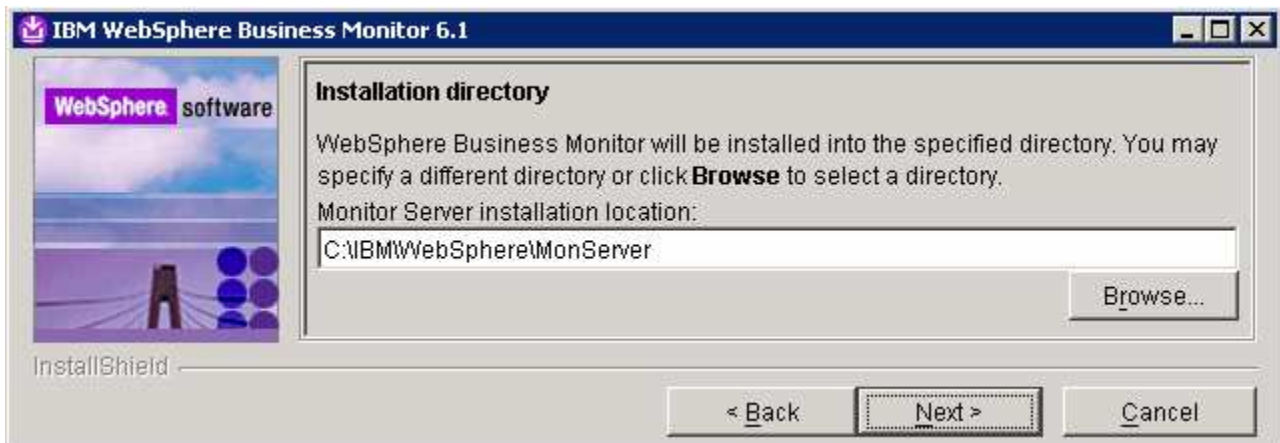
IBM WEBSHERE BUSINESS MONITOR 6.1 – LAB EXERCISE



___ 13. Click **Next**

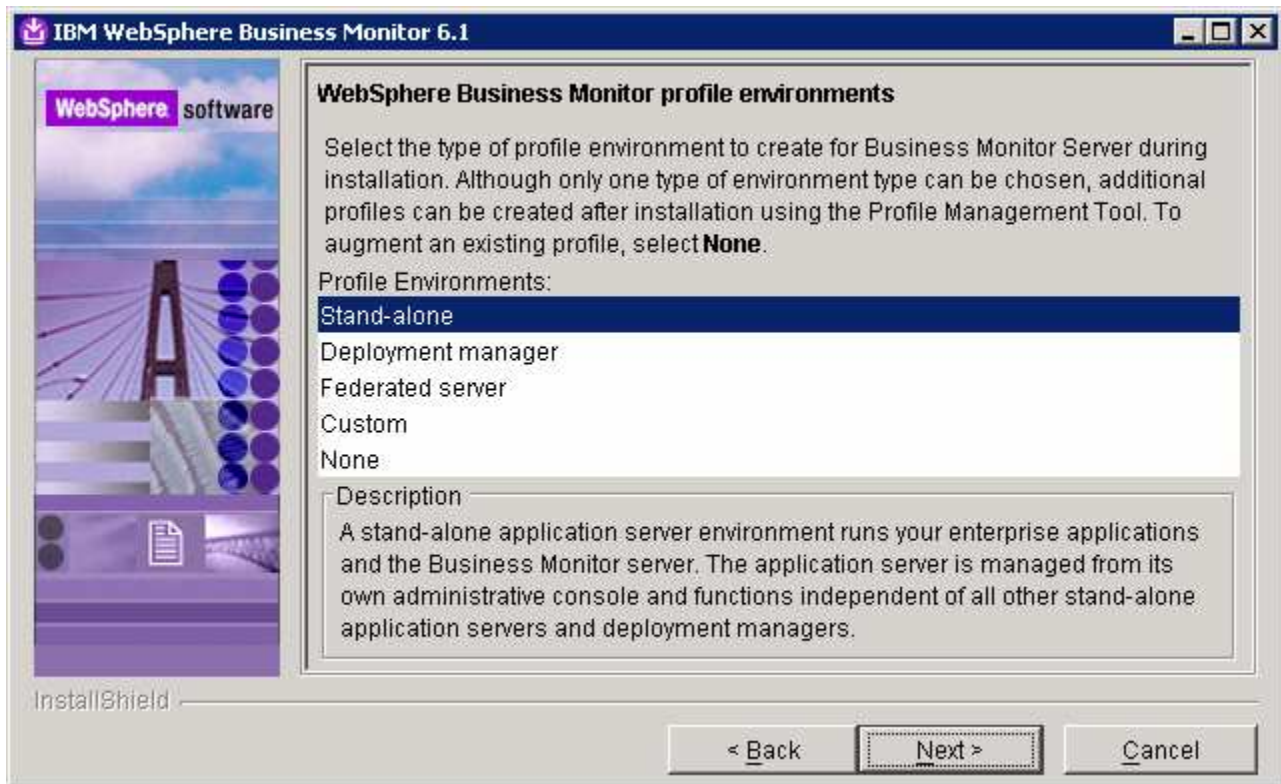
___ 14. In the following panel, click the **Browse** button to specify a different directory for '**Monitor Server installation location**'

___ a. Monitor Server installation location : **C:\IBM\WebSphere\MonServer**



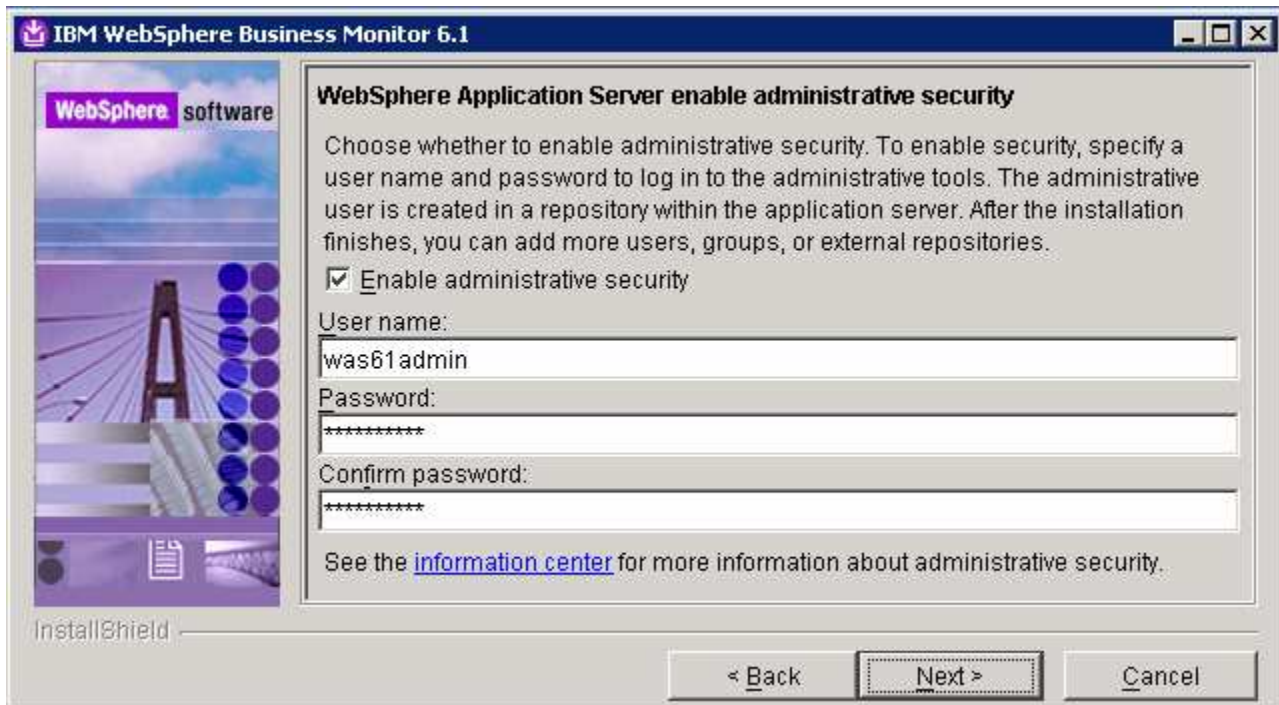
___ 15. Click **Next**

___ 16. In the following '**WebSphere Business Monitor profile Environments**' panel, select **Stand-alone** for the '**Profile Environments**'



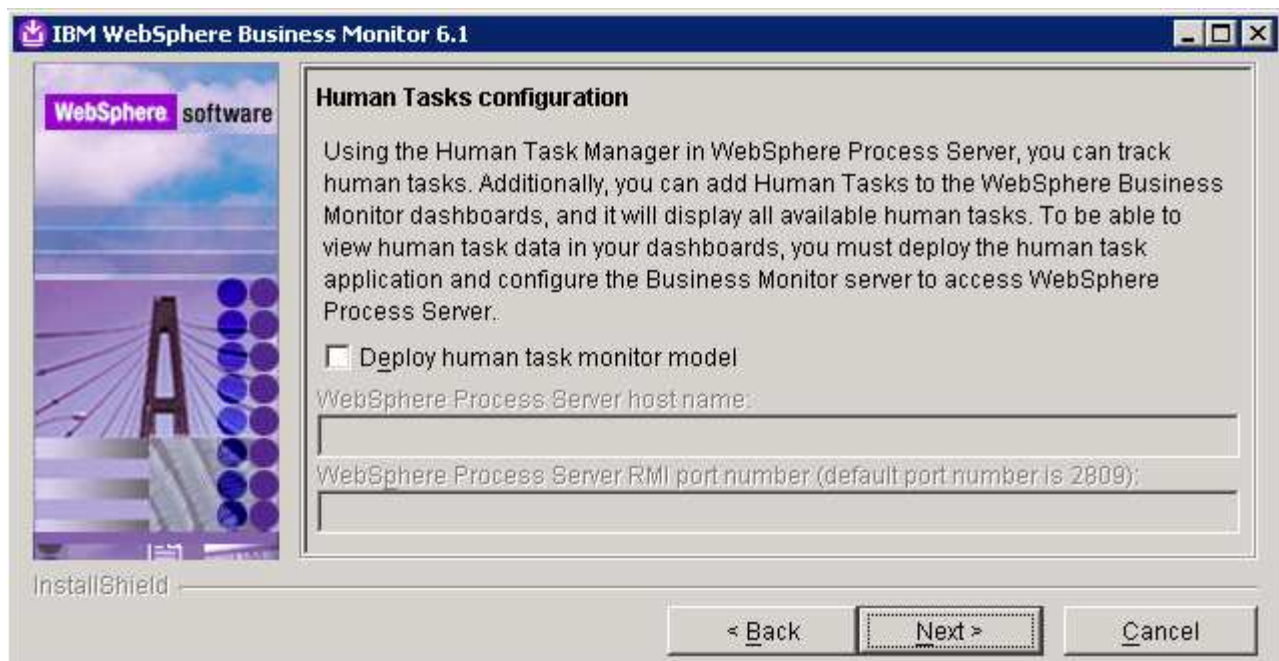
- ___ 17. Click **Next**
- ___ 18. In the following panel, you are given the option to enable WebSphere Application Server administrative security. Follow the instructions below to enable security:
 - ___ a. Select the check box for '**Enable administrative security**'
 - ___ b. User name : **was61admin**
 - ___ c. Password : **was61admin**
 - ___ d. Confirm Password : **was61admin**

IBM WEBSHERE BUSINESS MONITOR 6.1 – LAB EXERCISE



___ 19. Click **Next**

___ 20. In the following **Human Task Configuration** panel, accept the default



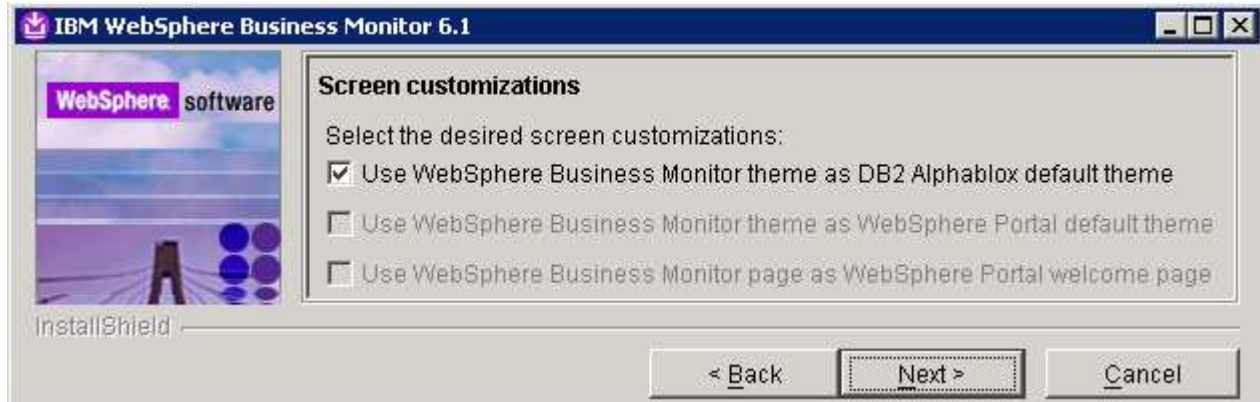
Note: The Human Task Configuration requires a WebSphere Process Server V6.1 in the environment. The InstallShield wizard uses the information provided in this panel to test the connection and validate that WebSphere Process Server is running properly. You can configure this manually later, and the instructions

IBM WEBSHERE BUSINESS MONITOR 6.1 – LAB EXERCISE

are provided at the end of the document. Visit section '**Deploy Human Tasks Monitor model and Configure connections for web-based dashboards**'.

____ 21. Click **Next**

____ 22. In the following '**Screen customization**' panel, optionally select the check box for '**Use WebSphere Business Monitor theme as DB2 Alphablox default theme**'



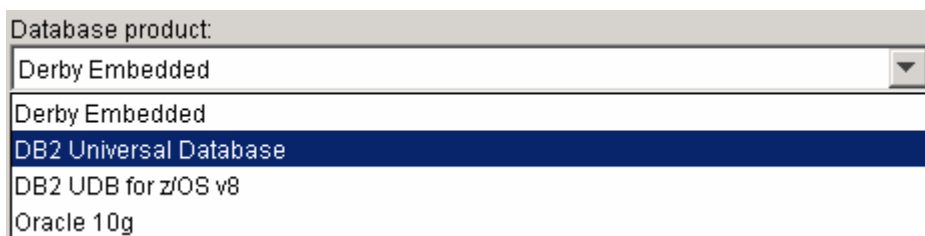
____ 23. Click **Next**

____ 24. In the following '**Database configuration**' panel, enter the following:

- __ a. Database Product : **DB2 Universal Database** (select from the drop down list)
- __ b. Database creation method : Select the radio button for '**Create a new local database**'
- __ c. Database name : **MONITOR**
- __ d. Schema name : **MONITOR**

Note: -

Database Product: - The Monitor V6.1 installation wizard supports **Embedded Derby, DB2 Universal Database, DB2 UDB for z/OS V8** and **Oracle 10g** as database products. However if you are planning to use the portlet based dashboard, ensure that DB2 or Oracle is used as a database environment.



Remember: If you have plans to install Alphablox features for portlet-based dashboards in the environment, ensure that you not use Derby as database. The InstallShield wizard will not list Derby as a database option.

Database creation method: - Optionally, you can choose the radio button for '**Use existing database**'. The InstallShield wizard creates the required resources and configures the connections for the existing or non existing MONITOR database. If the MONITOR database is not yet created, you must manually run the generated scripts to create the database after the installation is complete.

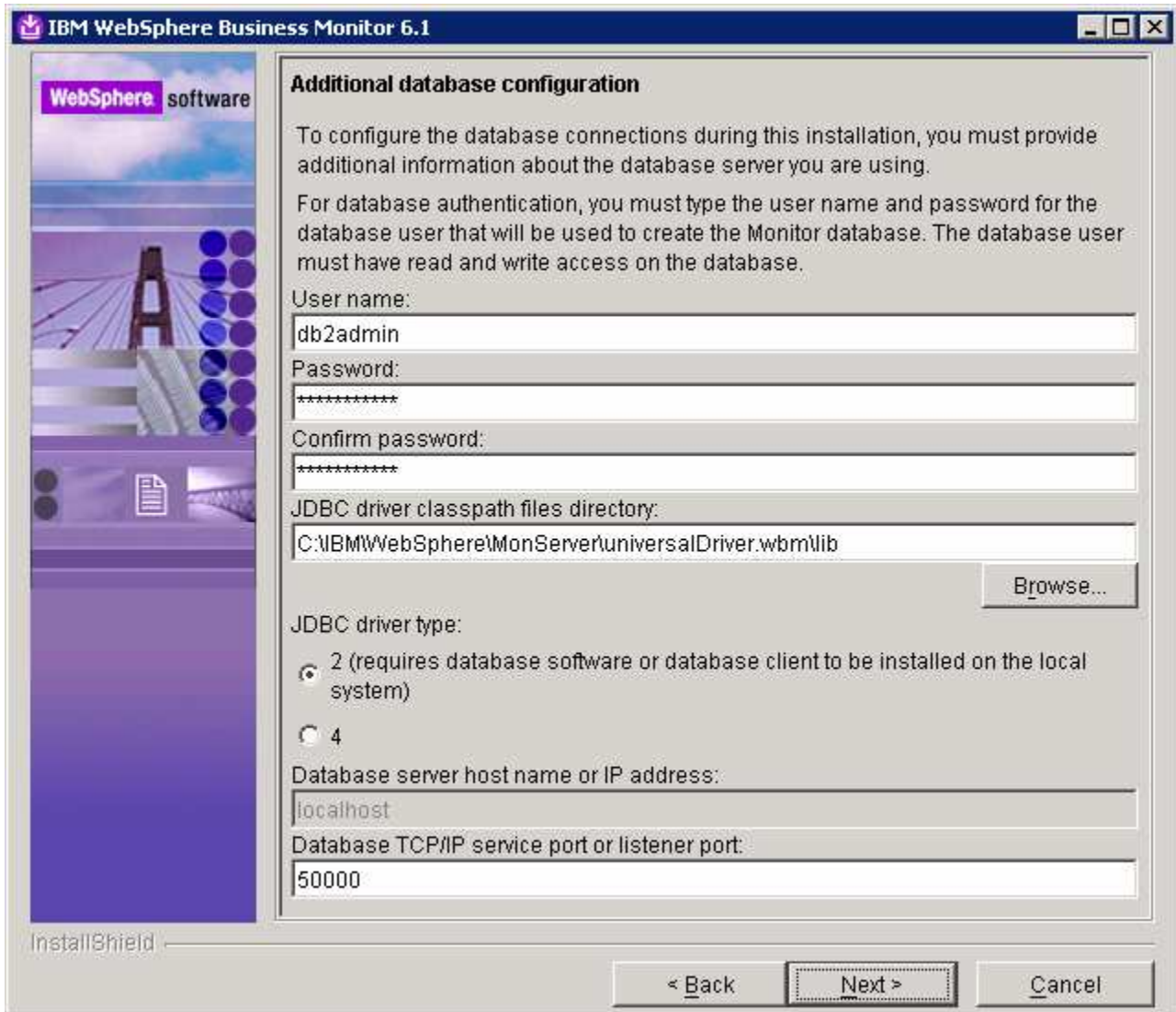
Database creation method: - If you had selected the option, '**Create a new local database**' ensure that the required database product or client is installed local to the monitor server installation.

___ 25. Click **Next**

___ 26. In the following '**Additional database configuration**' panel, enter the following information :

- ___ a. User name : **db2admin**
- ___ b. Password : **db2admin**
- ___ c. Confirm Password : **db2admin**
- ___ d. JDBC driver class path files directory
: **C:\IBM\WebSphere\MonServer\universalDriver.wbm\lib**
- ___ e. JDBC driver type : **2**
- ___ f. Database server host name : **localhost** (not editable)
- ___ g. Server port : **50000**

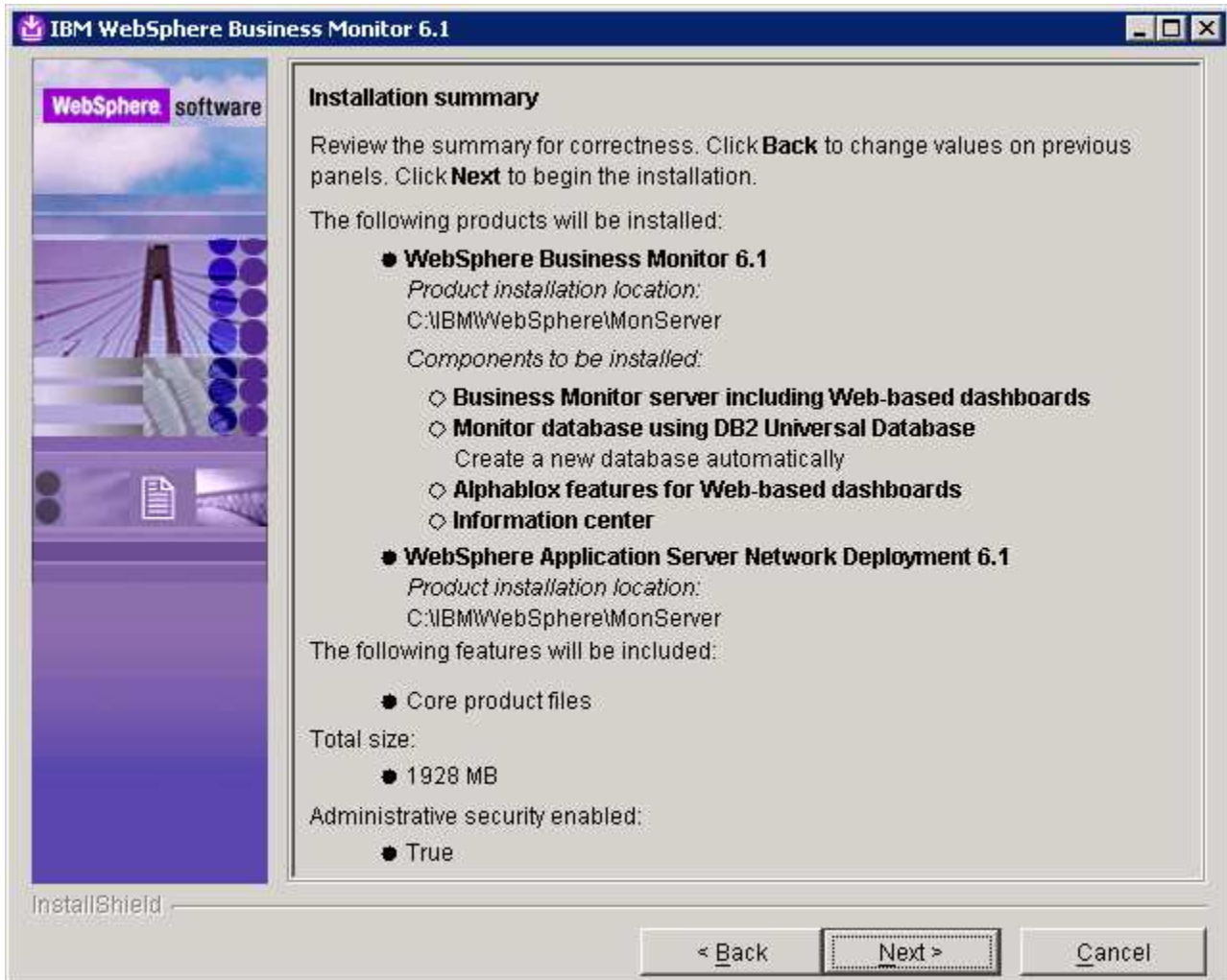
IBM WebSphere Business Monitor 6.1 – LAB EXERCISE



___ 27. Click **Next**

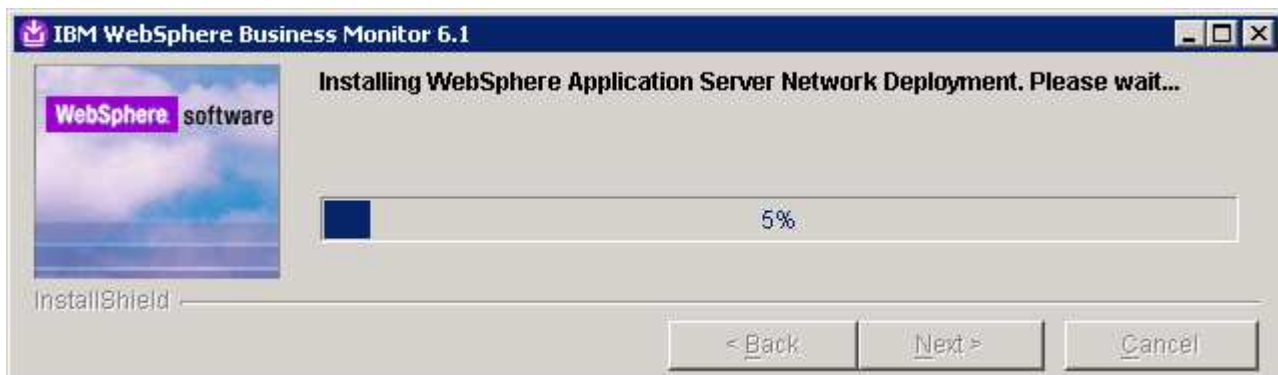
___ 28. Review the installation summary in the following panel:

IBM WEBSHERE BUSINESS MONITOR 6.1 – LAB EXERCISE



___ 29. Click **Next**. This action starts the installation

___ 30. The installation progresses starting with WebSphere Application Server V6.1

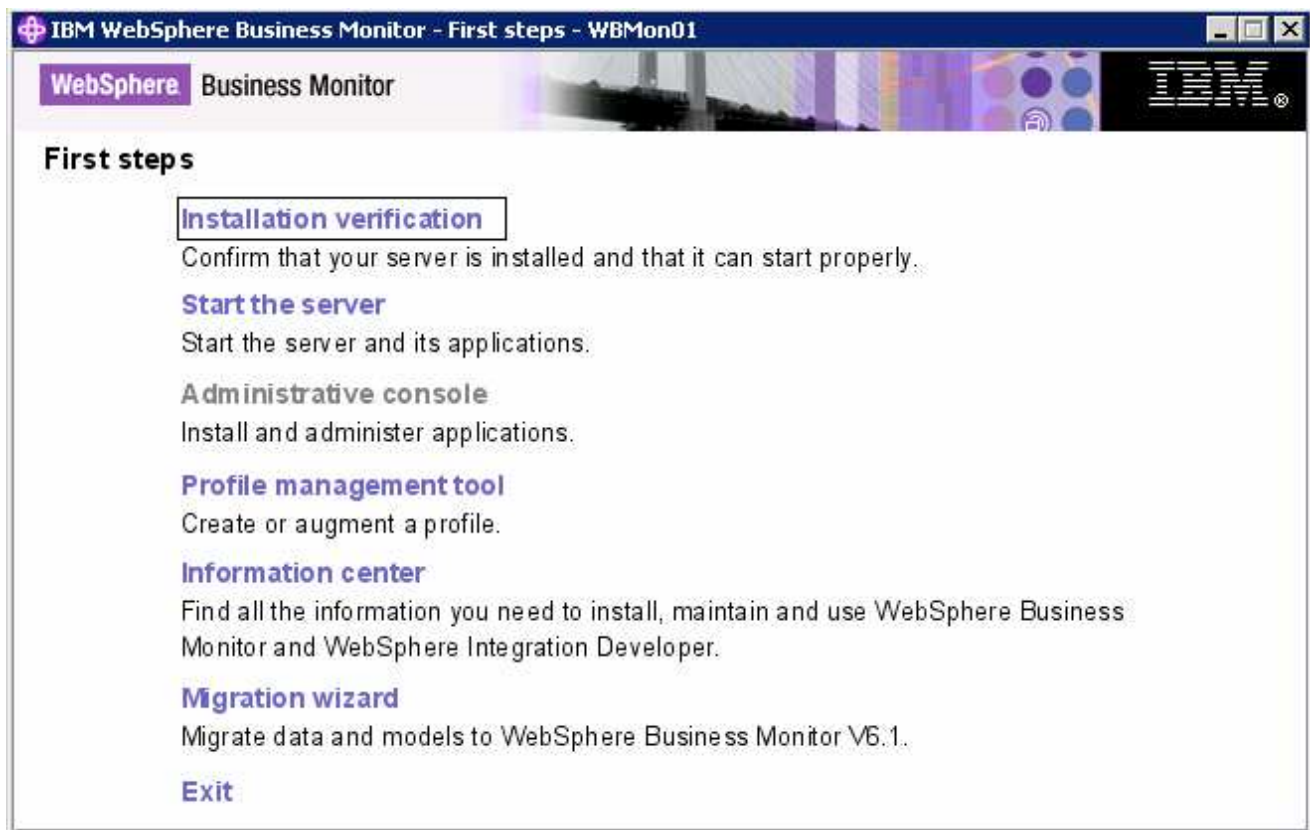


___ 31. Review the **Installation results** summary of the WebSphere Business Monitor V6.1 components and ensure all the components listed are successfully installed. Optionally select the check box for **'Launch WebSphere Business Monitor first steps'** to launch the first steps console to run the installation verification test

IBM WebSphere Business Monitor 6.1 – LAB EXERCISE

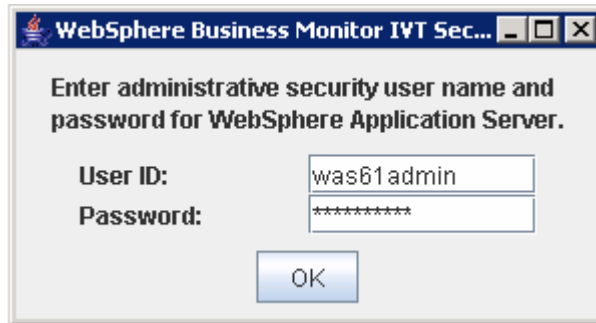


32. Click **Finish** to exit the installation wizard. The 'First Steps' console is launched as shown below:

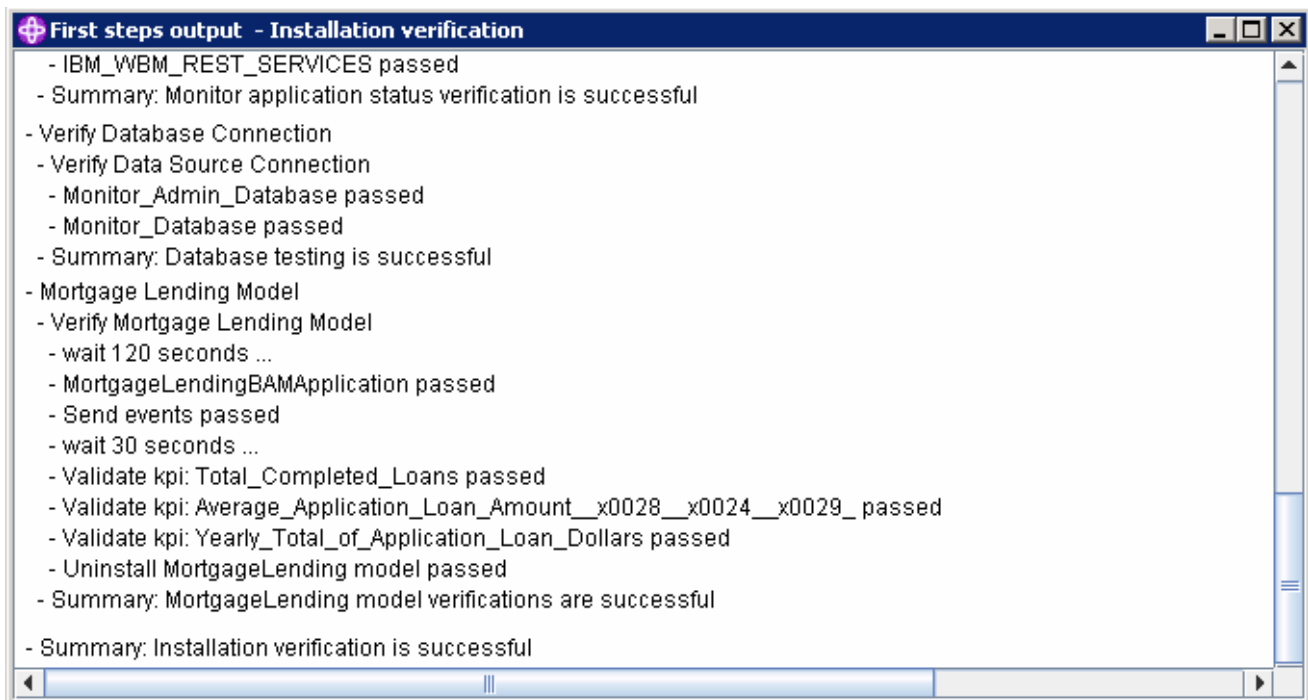


33. Click the '**Installation Verification**' link to confirm that the monitor server and its components are installed successfully. The '**Installation verification**' console is launched

Note: If the WebSphere Application Server, administrative security is enabled, a pop up dialog is launched prompting for the 'User ID' and 'Password'.



Enter the administrative 'User ID' and 'Password' of the WebSphere Application Server and click OK.



___ 34. Ensure all the components are flagged as **'passed'** and close the **'Installation verification'** console

___ 35. Click the **'Exit'** link to close the **'First Steps'** console

Part 3: Preparing for Portlet-based dashboards installation (Machine 2)

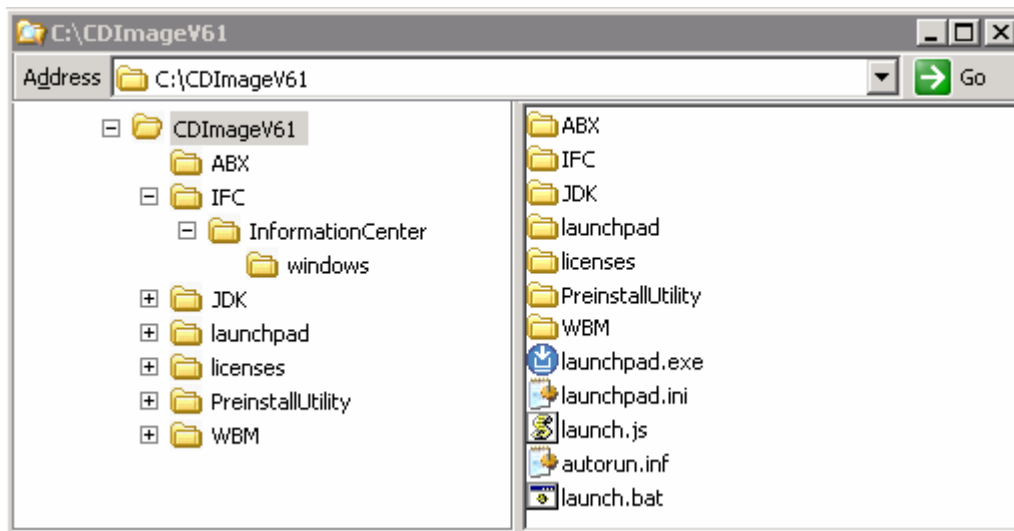
In this section of the lab, the pre-requisite software is obtained and extracted in such a way that an on-disk WebSphere Business Monitor V6.1 installation image is created.

- ___ 1. The following are the installation archives needed to install the WebSphere Business Monitor V6.1

Product Name	File Name
WebSphere Business Monitor V6.1 Base Components for Windows 2003 (Monitor V61 Setup CD)	C186LEN.zip
Alphablox V9.5 for Windows, AIX	C187GML.tar.gz
Information Center for Windows	IBM_Help_Win32.zip

- ___ 3. Download all the installation archives to a directory for example : C:\MonitorDriversV61\

- ___ a. Extract all of the archives into a directory named for example, C:\CDImageV61\ to create an on-disk image and confirm that the directory structure was extracted correctly. It should appear similar to the picture shown below:



Note: Pre-requisite image location and folder name:

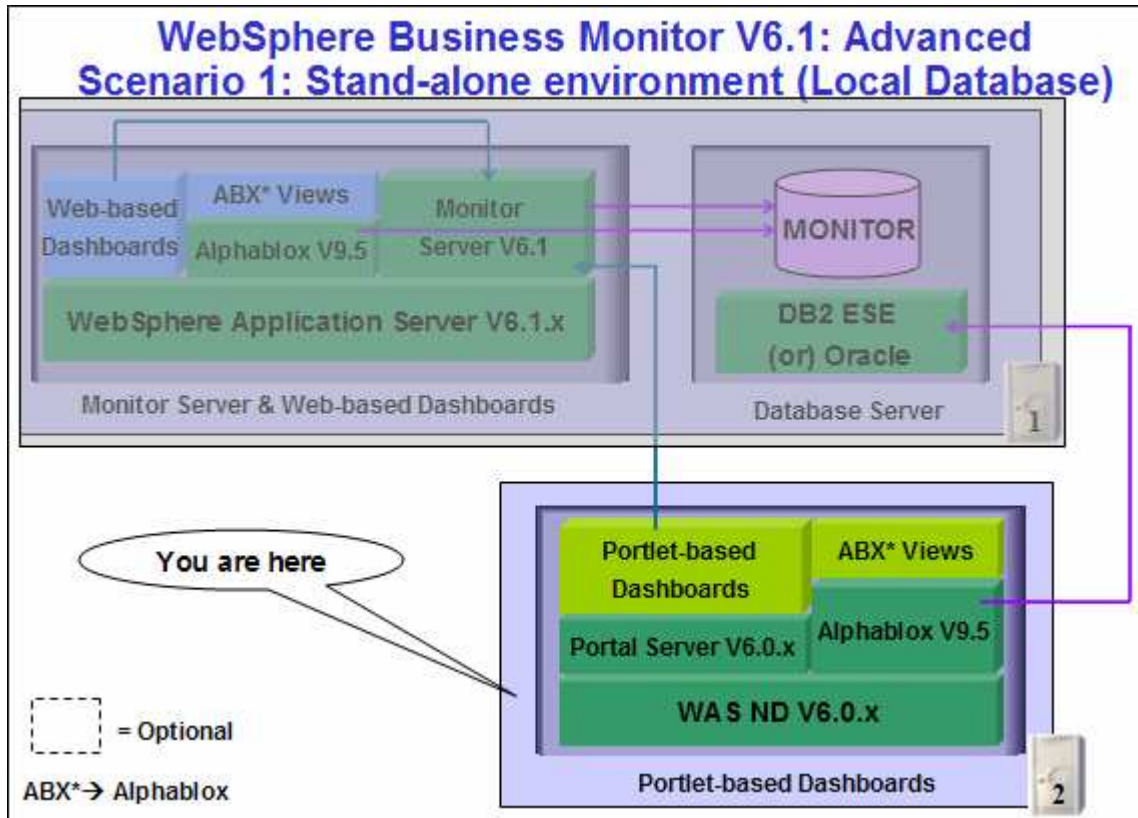
Executables should be placed directly under the directories specified below, so that 'install.exe' or 'install.sh' can be silently launched. Adding 'subdirectories' will prevent successful completion.

Important: Do not extract IBM_Help_Win32.zip file. The InstallShield wizard expects 'IBM_Help_Win32.zip' file name.

InfoCenter - <Monitor_Install_Image_Directory>\IFC\InformationCenter\windows\IBM_Help_Win32.zip
 Alphablox V9.5- <Monitor_Install_Image_Directory>\ABX\install.exe

Part 4: Installing Portlet-based dashboards including Alphablox views (Machine 2)

In this part of the lab, you will choose the option to install only the Portlet-based dashboards including Alphablox views using the InstallShield wizard on machine two.



In this part of the lab on machine two, you will install WebSphere Portal Server V6.0.1.1 as a prerequisite and then use the InstallShield wizard to install the Portlet based dashboard in a stand-alone environment and Alphablox V9.5 for Alphablox views. You will use Type 4 database driver for the Portlet-based Dashboards connecting to the remote MONITOR database on the monitor server machine (Machine 1).

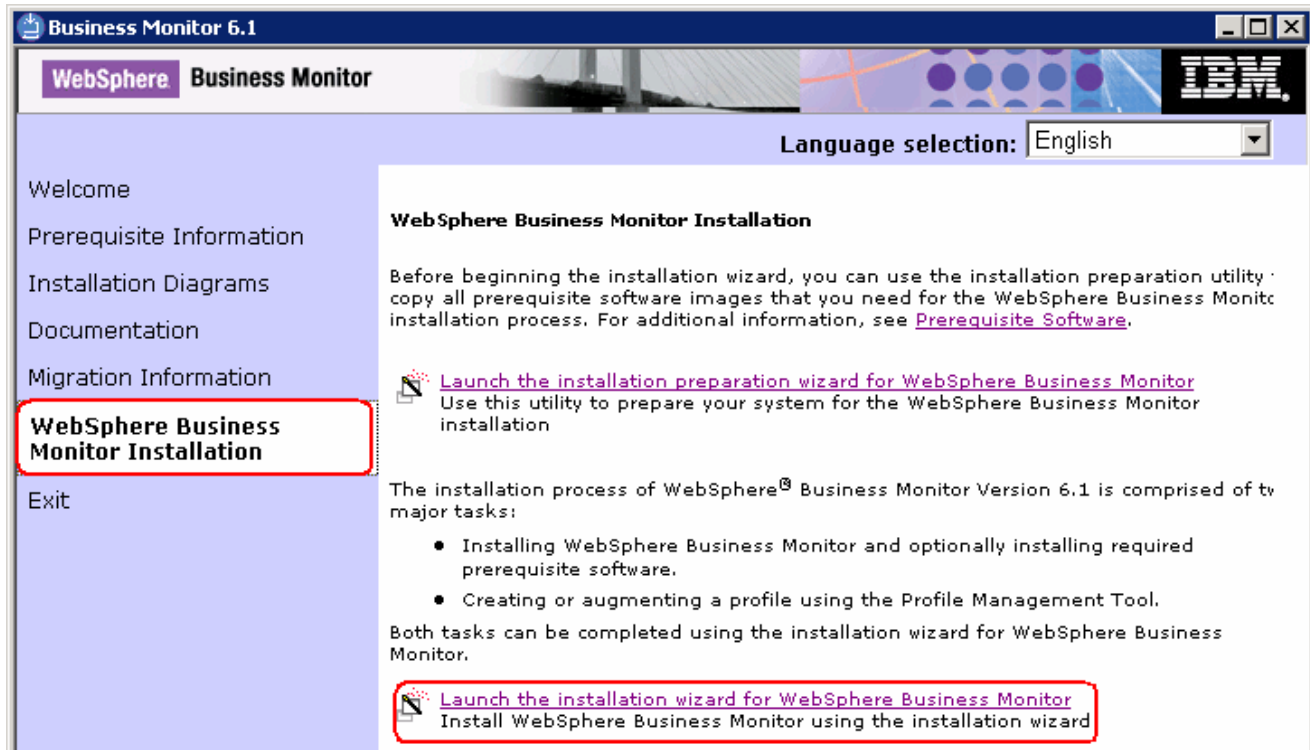
Mandatory Prerequisite:

The InstallShield wizard does not install WebSphere Portal Server V6.0.1.1 in an 'Advanced' installation type. It has to be installed as a prerequisite out of the InstallShield wizard. Follow the instructions at: ["Task 2: Install WebSphere Portal Server V6.0 and update to V6.0.1.1"](#).

IBM WEBSHERE BUSINESS MONITOR 6.1 – LAB EXERCISE

Follow the instructions below to complete the Portlet-based Dashboards installation using the 'Advanced' installation type:

1. From the directory where all the pre-requisites and the Monitor driver are extracted (Example:- C:\CDImageV61\), double click on **launchpad.exe** to launch the Common Launchpad program



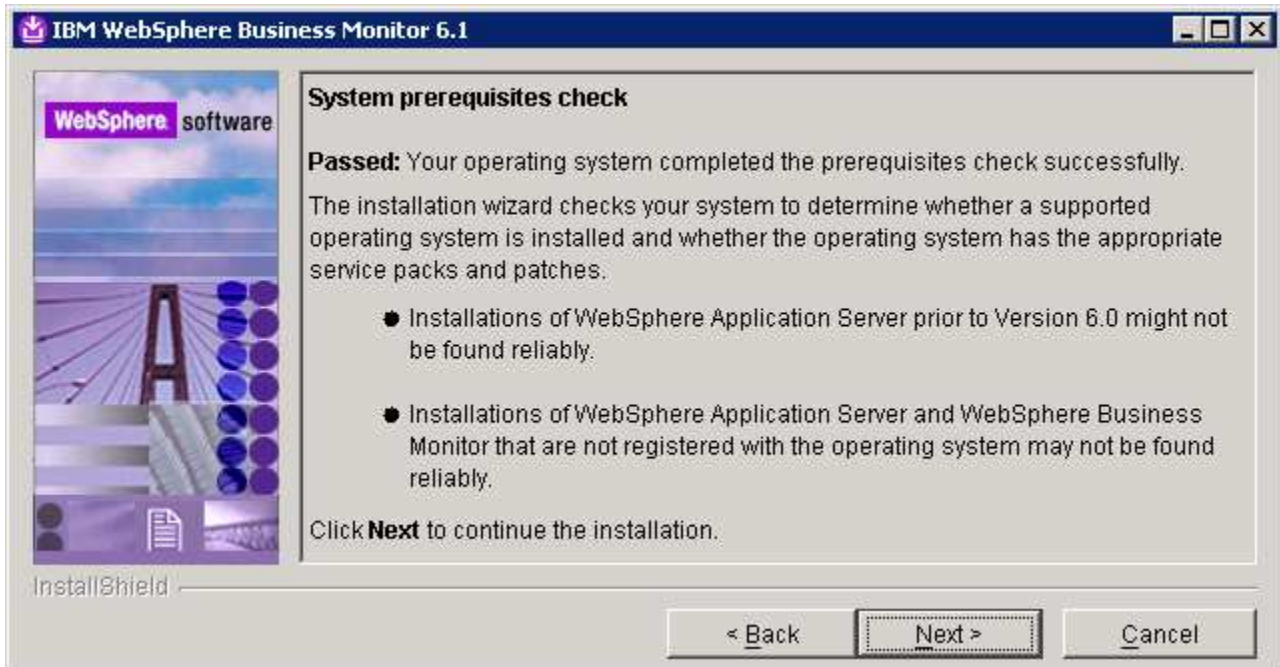
2. On the welcome screen, click on the **WebSphere Business Monitor Installation** link in the left pane and then click '**Launch the installation wizard for WebSphere Business Monitor**'. This launches the WebSphere Business Monitor V6.1 InstallShield wizard



3. Click **Next**
4. In the following panel, read the license agreement. If you agree to the terms, select the radio button for '**I accept the both the IBM and the non-IBM terms**'

IBM WEBSHERE BUSINESS MONITOR 6.1 – LAB EXERCISE

- ___ 5. Click **Next**. The monitor installation program does an operating system prerequisite check and warns if the product installation is not supported
- ___ 6. In the following panel, read the '**System prerequisite check**' information and act accordingly



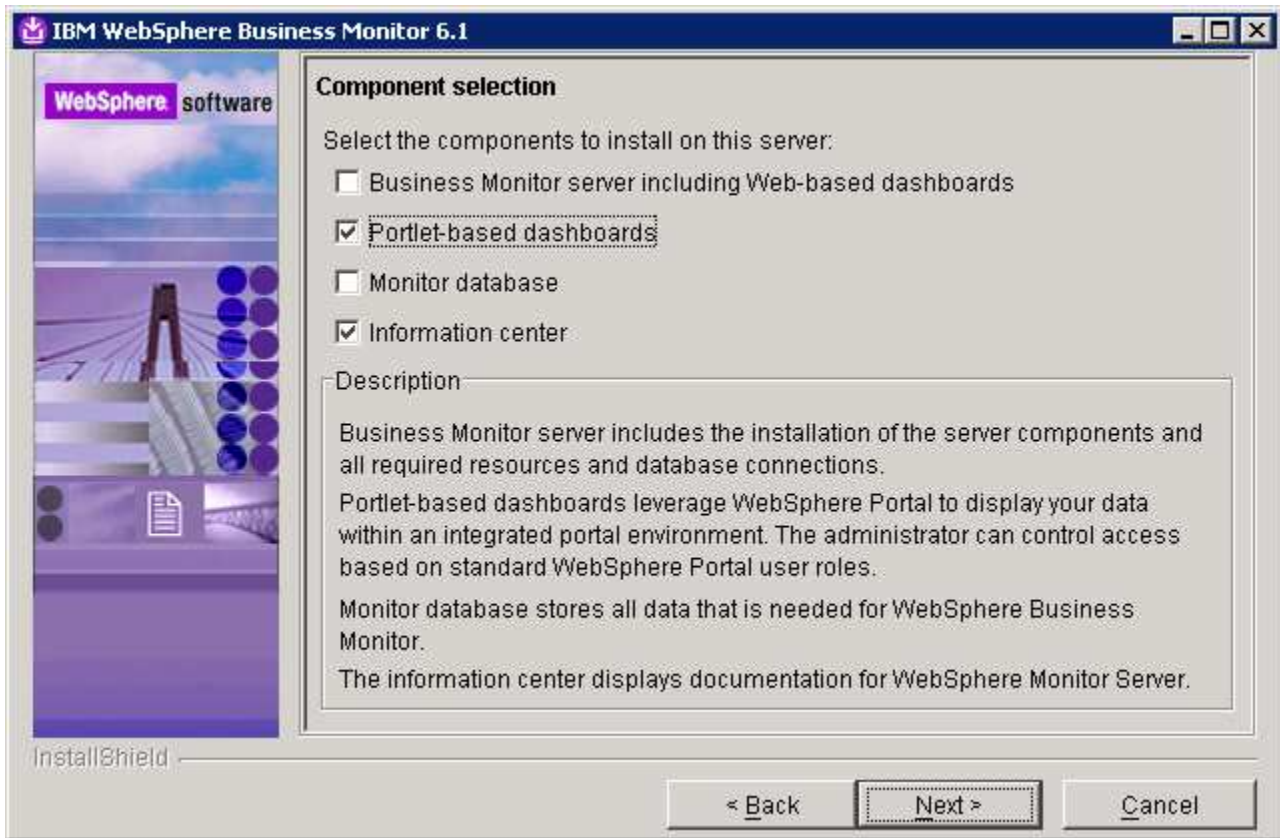
- ___ 7. Click **Next** to continue the installation
- ___ 8. In the following panel, select **Advanced Installation** as the **Installation Type**



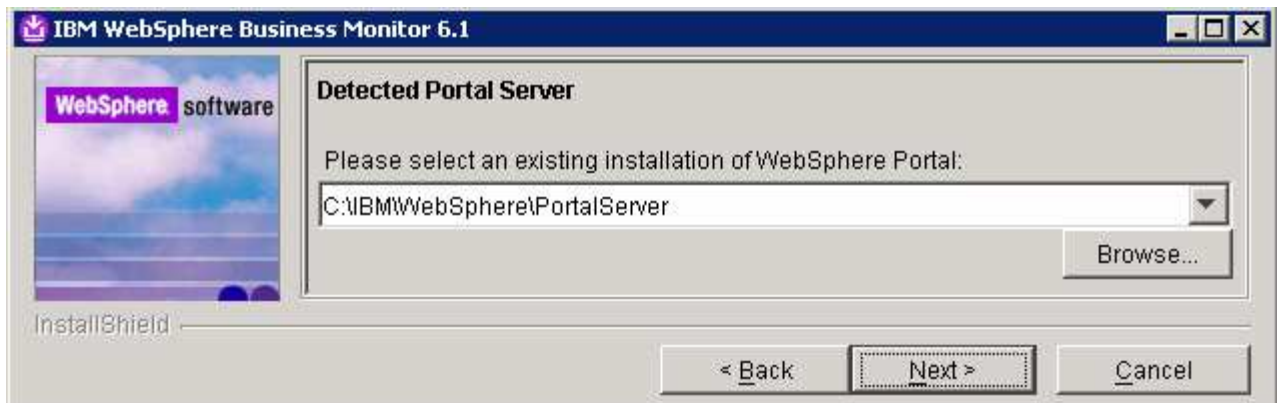
- ___ 9. Click **Next**

IBM WEBSHERE BUSINESS MONITOR 6.1 – LAB EXERCISE

10. In the following 'Component Selection' panel, select only the check box for 'Portlet-based dashboards'. Optionally select the check box for 'Information Center' to install the information center



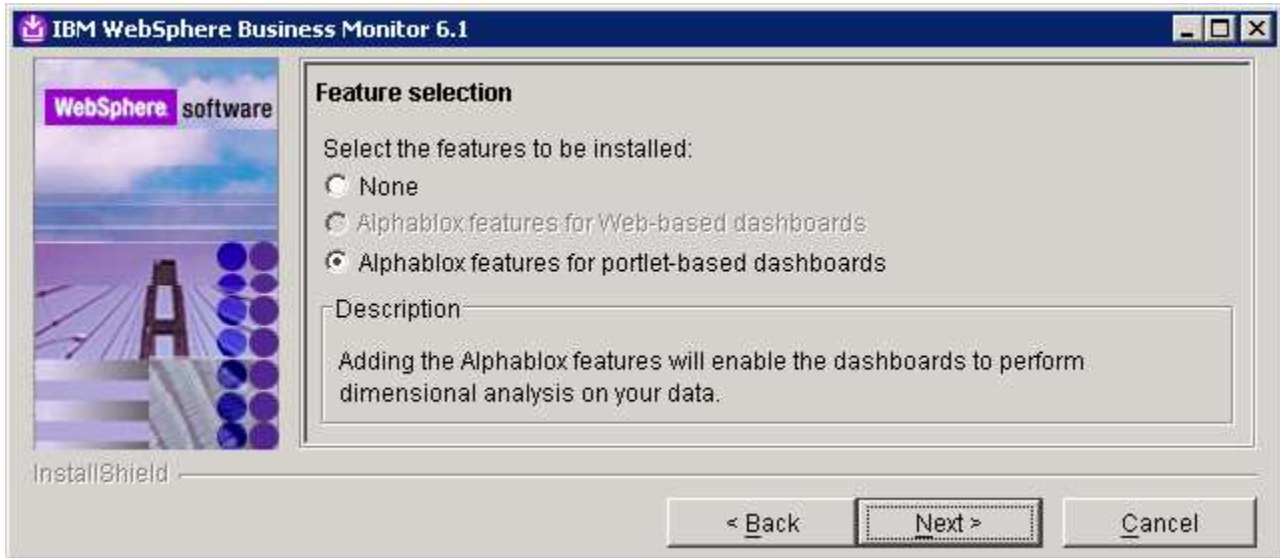
11. Click **Next**
12. In the following 'Detected Portal Server' panel, ensure the WebSphere Portal Server location is correct or click the **Browse** button to select an existing installation location of WebSphere Portal Server V6.0.1.1
- Existing installation location : **C:\IBM\WebSphere\PortalServer**



13. Click **Next**

IBM WEBSHERE BUSINESS MONITOR 6.1 – LAB EXERCISE

- ___ 14. In the following **Feature selection** panel, select the radio button for '**Alphablox features for portlet-based dashboards**'.



- ___ 15. Click **Next**
- ___ 16. In the following panel, enter the administrative security user name and password for WebSphere Application Server and WebSphere Portal Server
- ___ a. WebSphere Application Server user name : **was602admin**
 - ___ b. Password : **was602admin**
 - ___ c. Confirm password : **was602admin**
 - ___ d. Portal Server User name : **wpsadmin**
 - ___ e. Password : **wpsadmin**
 - ___ f. Confirm password : **wpsadmin**

Note: Ensure that you entered the correct user name and password for both the WebSphere Application Server and Portal Server before proceeding further.

IBM WEBSHERE BUSINESS MONITOR 6.1 – LAB EXERCISE

WebSphere Portal administrative security

Specify a user name and password to log in to the WebSphere Portal 6.0.1.1 administrative tools. Because WebSphere Portal 6.0.1.1 is installed into a WebSphere Application Server 6.0.2 environment, you must provide administrative user information for WebSphere Portal and WebSphere Application Server. The administrative users are created in a repository within the monitor server. After the installation finishes, you can add more users, groups, or external repositories.

WebSphere Application Server user name:
was602admin

Password:

Confirm password:

WebSphere Portal user name:
wpsadmin

Password:

Confirm password:

See the [information center](#) for more information about administrative security.

InstallShield

< Back Next > Cancel

- ___ 17. Click **Next**
- ___ 18. In the following **Portlet-based dashboards configuration** panel, enter the following configuration information:
- ___ a. WebSphere Portal profile name : **wp_profile** (not editable)
 - ___ b. WebSphere Portal profile directory : **C:/ibm/WebSphere/wp_profile** (not editable)
 - ___ c. Monitor data security server host name : **<fully qualified name of monitor server machine >**
Example: monitorsrv.austin.ibm.com
 - ___ d. Monitor data security port number : **<default HTTP port number of the monitor server>**
Example: 9080

Note: The Monitor data security server is the WebSphere Business Monitor Server profile. The Monitor data security port number is the default HTTP port number on which the Monitor Server profile is running.

IBM WEBSHERE BUSINESS MONITOR 6.1 – LAB EXERCISE



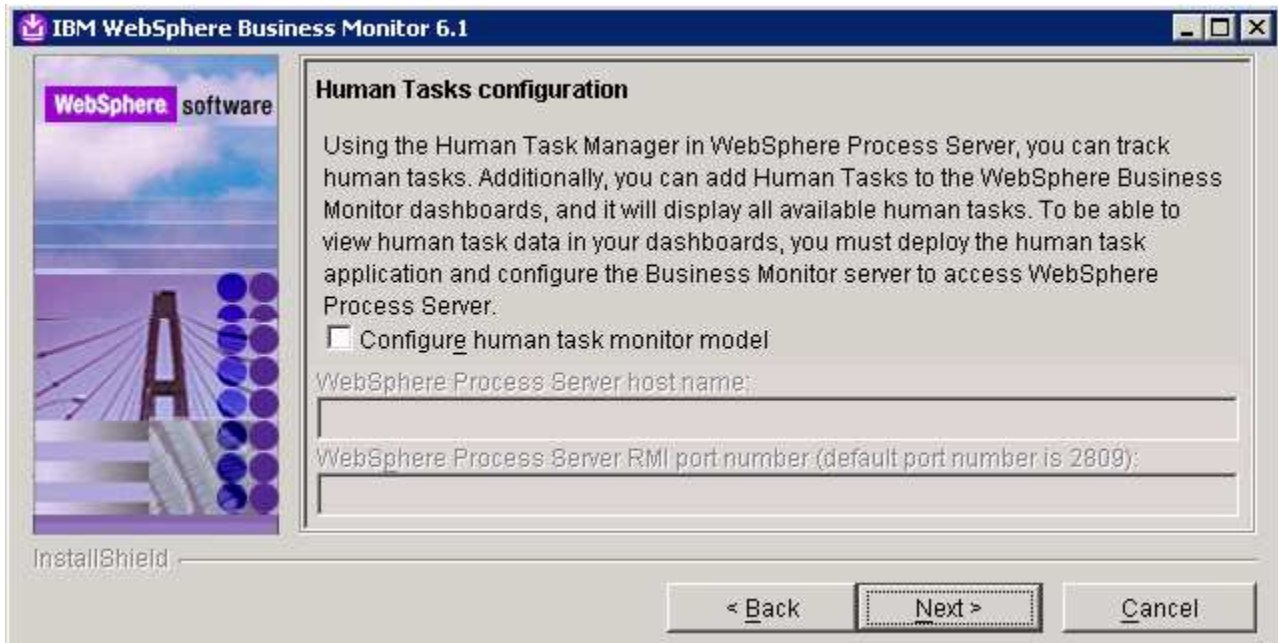
Task: To post-configure the connections manually for the host name and port number, follow the instructions below:

- Start the 'WebSphere_Portal' server and launch the WebSphere Application Server V6.0.2 administrative console. (Example: <http://localhost:10027/admin>), enter the username and password and log on.
- In the left pane, expand **Application Servers** and click the 'WebSphere_Portal' link to the right
- In the following page, expand '**Java and Process Management**' and click the '**Process Definition**' link
- In the following page, click on '**Java Virtual Machine**' under 'Additional Properties'
- In the following page, click on '**Custom Properties**' under 'Additional Properties'
- In the following page, click on [DashboardRESTServiceTarget | localhost:9080](#) link
- In the following page, update the **Value** field with the correct hostname and port (Example: <Fully qualified 'Monitor data security server host name' (Monitor Server)> :< port number>)
- Click **OK**, save to master configuration and restart the '**WebSphere_Portal**' server

____ 19. Click **Next**

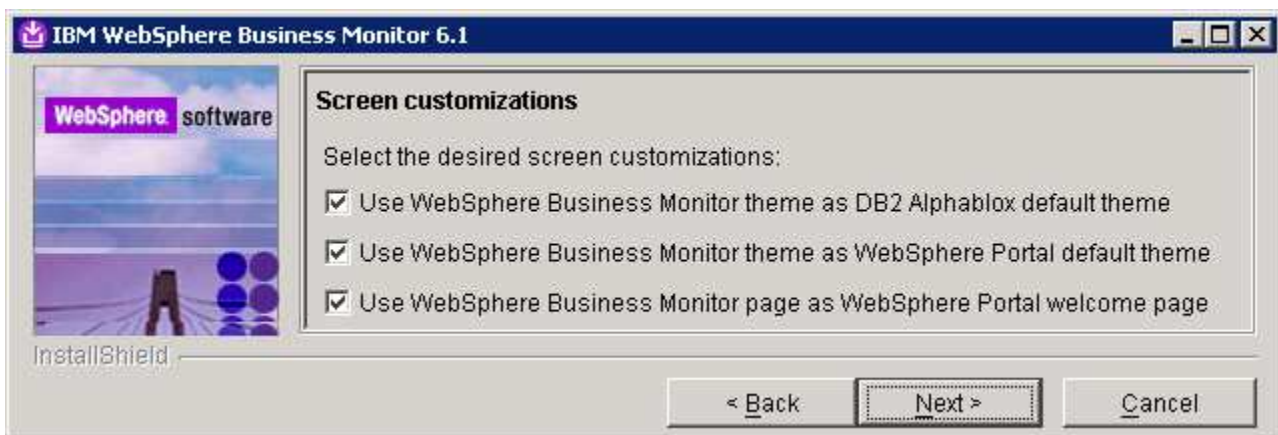
____ 20. In the following **Human Tasks Configuration** panel, accept the default

IBM WEBSHERE BUSINESS MONITOR 6.1 – LAB EXERCISE



Note: The Human Task Configuration requires a WebSphere Process Server V6.1 in the environment. The InstallShield wizard uses the information provided in this panel to test the connection and validate that WebSphere Process Server running properly. You can configure this manually later, and the instructions are provided at the end of the document. Visit section '**Human Task Configuration for portlet based dashboards**'

- ___ 21. Click **Next**
- ___ 22. In the following '**Screen customizations**' panel, select the check boxes for the desired screen customizations

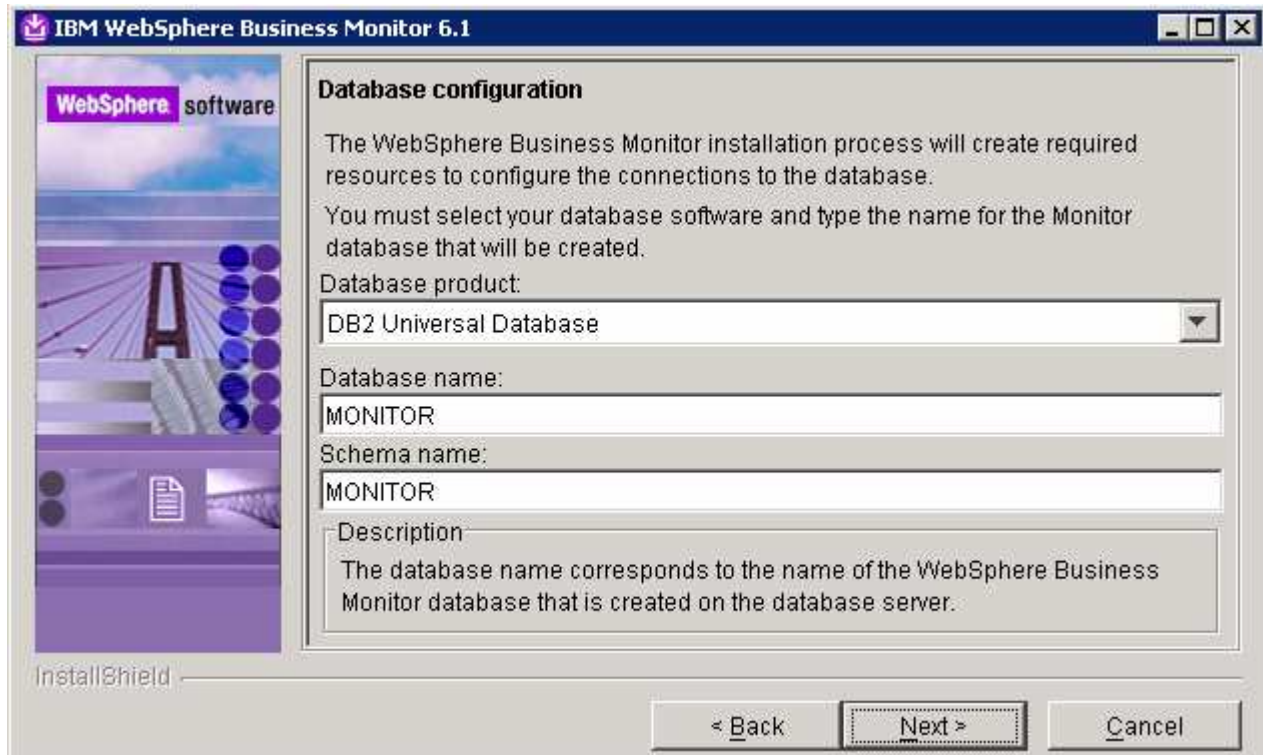


- ___ 23. Click **Next**
- ___ 24. In the following '**Database configuration**' panel, enter the following:
- ___ a. Database product : **DB2 Universal Database**
- ___ b. Database name : **MONITOR**

IBM WEBSHERE BUSINESS MONITOR 6.1 – LAB EXERCISE

__ c. Schema name : **MONITOR**

Important: Enter the correct database and schema names that you used while creating the MONITOR database on machine one.



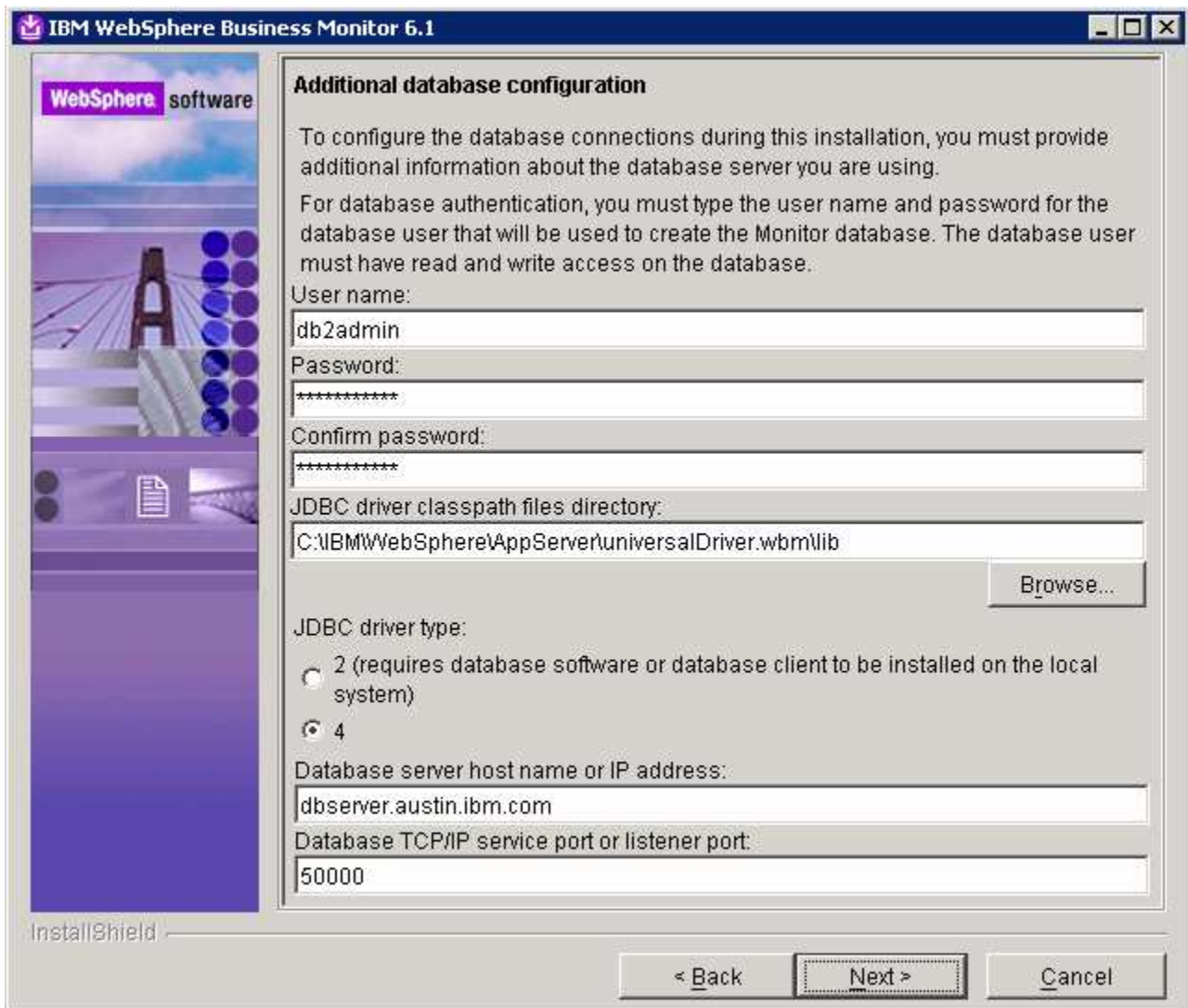
___ 25. Click **Next**

___ 26. In the following 'Additional database configuration' panel, enter the following information :

- __ a. User name : **db2admin**
- __ b. Password : **db2admin**
- __ c. Confirm Password : **db2admin**
- __ d. JDBC driver class path files directory : **C:\IBM\WebSphere\AppServer\universalDriver.wbm\lib**
- __ e. JDBC driver type : **4**
- __ f. Database server host name : **dbserver.austin.ibm.com** (Monitor server machine in this scenario)
- __ g. Server port : **50000**

Important: Enter the correct user name and password you used to create the MONITOR database. Also provide the correct port number on which the database server is running. The database server host name is the fully qualified host name of the machine where the database server is running (Machine 1 in this scenario).

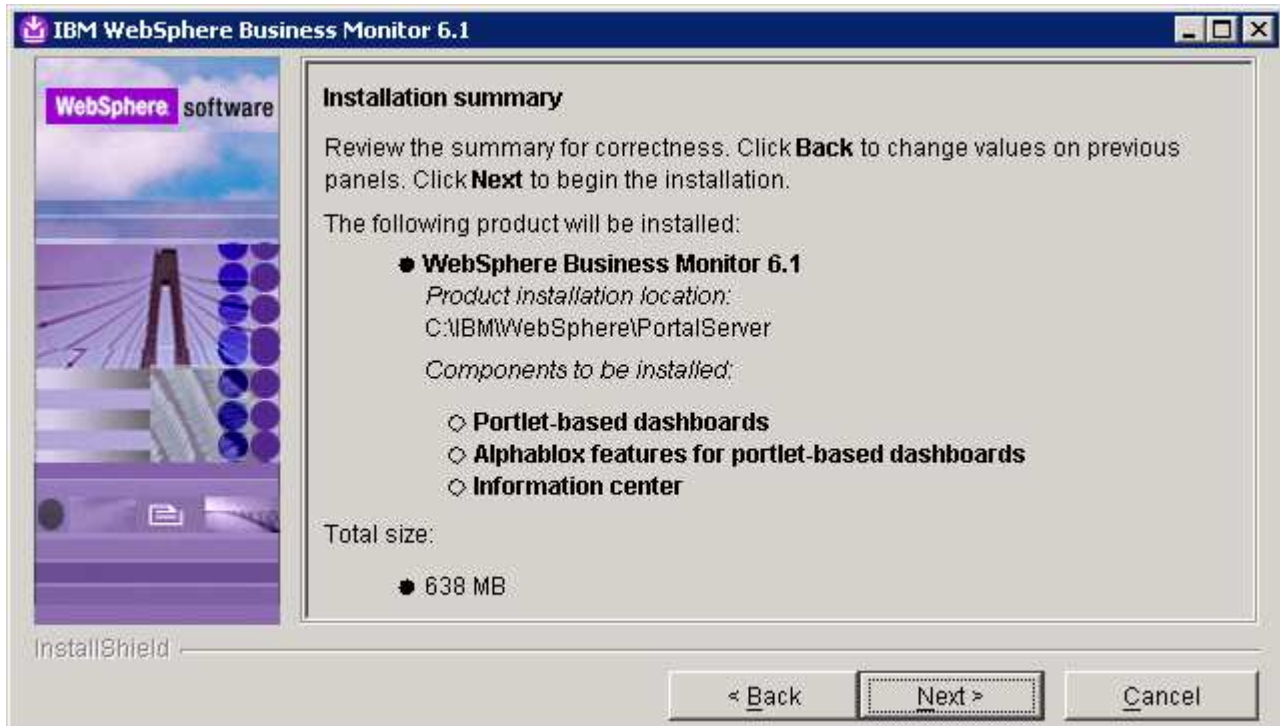
IBM WEBSHERE BUSINESS MONITOR 6.1 – LAB EXERCISE



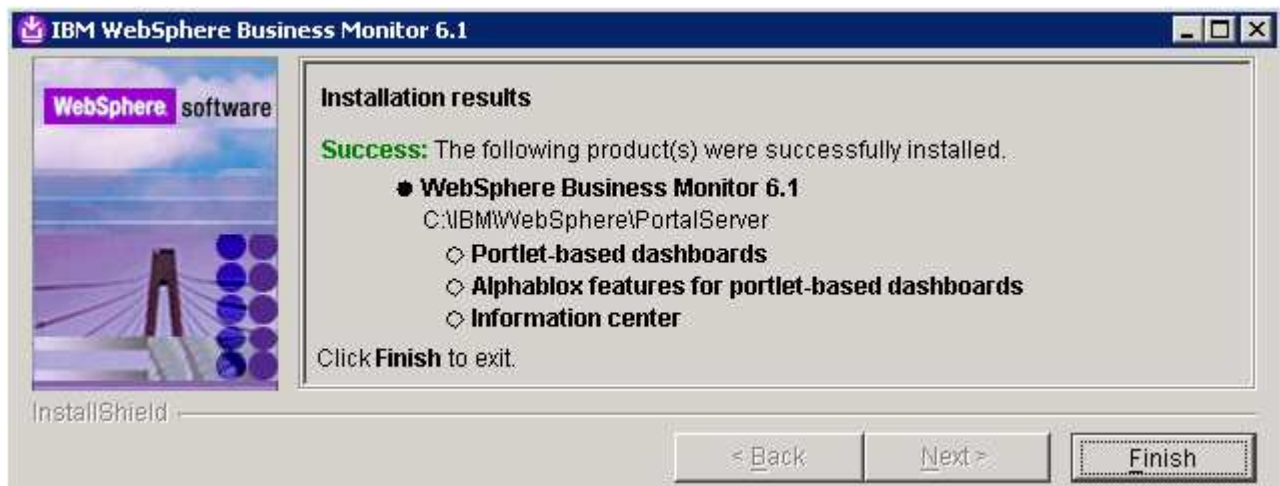
____ 27. Click **Next**

____ 28. Review the installation summary in the following panel

IBM WEBSHERE BUSINESS MONITOR 6.1 – LAB EXERCISE



- ___ 29. Click **Next**. The installation progresses
- ___ 30. Review the **Installation results** summary of the WebSphere Business Monitor V6.1 components and ensure all the software components listed are successfully installed



- ___ 31. Click the **Finish** button to exit the installation wizard

What you did in this exercise

You obtained the Monitor 6.1 drivers and pre-requisites, extracted them to create the on-disk image. You used the InstallShield program to install the Monitor server and its components, and the Web-based Dashboards including Alphablox views in a stand-alone environment on machine one. You also created the MONITOR database. And you installed WebSphere Portal Server V6.0.1.1 and Portlet-based Dashboards including Alphablox views on machine two.

Task 1: Install WebSphere Portal Server V6.0 and update to V6.0.1.1

In this section of the lab, the WebSphere Portal Server V6.0 is installed and then upgraded to version 6.0.1.1 to meet the requirements of portlet-based dashboards installation. Obtain the WebSphere Portal Server V6.0 software and extract in such a way to create the correct on-disk structure for the Launchpad to run

- ___ 1. The following are the installation files needed to install WebSphere Portal Server V6.0

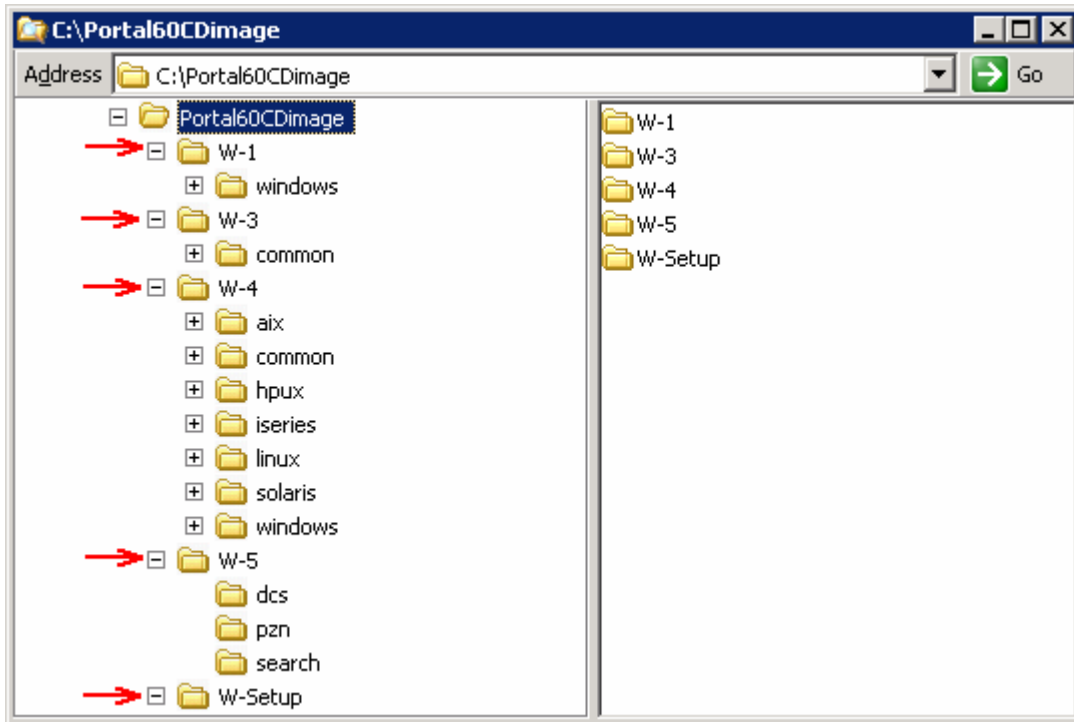
Product Name	File Name
WebSphere Portal Server V6.0.0 Setup	W-Setup.zip
WebSphere Portal Server V6.0.0 CD 1	W-1.zip
WebSphere Portal Server V6.0.0 CD 3	W-3.zip
WebSphere Portal Server V6.0.0 CD 4	W-4.zip
WebSphere Portal Server V6.0.0 CD 5	W-5.zip

- ___ 2. The following are the installation archives needed to update the WebSphere Portal Server V6.0 to version 6.0.1.1

Product Name	File Name
WebSphere Application Server FP 6.0.2.17 Installer and FP17	6.0.2-WS-WAS-WinX32-FP00000017.zip
JDK FP21	6.0.2-WS-WASJavaSDK-WinX32-FP00000021.zip
Portal FP 6.0.1.1 Installer	PortalUpdateInstallerWIN.zip
FP 6.0.1.1	WP_PTF_6011.jar

- ___ a. 6.0.2-WS-WAS-WinX32-FP00000017.zip (updates WebSphere Application Server V6.0.2.9 base. Includes WebSphere Application Server update installer)
- ___ b. 6.0.2-WS-WASJavaSDK-WinX32-FP00000021.zip (updates WebSphere Application Server SDK)
- ___ c. WP_PTF_6011.jar (updates WebSphere Portal Server to version 6.0.1.1)
- ___ d. PortalUpdateInstallerWIN.zip (update installer for WebSphere Portal Server)
- ___ 3. Download the Portal installation archives to a directory for example : C:\Portal60Driver\
 ___ a. Extract the WebSphere Portal Server installation archives into a directory named for example, C:\Portal60CDImage\ to create an on-disk image and confirm that the directory structure was extracted correctly. It should appear similar to the picture shown below:

IBM WEBSHERE BUSINESS MONITOR 6.1 – LAB EXERCISE

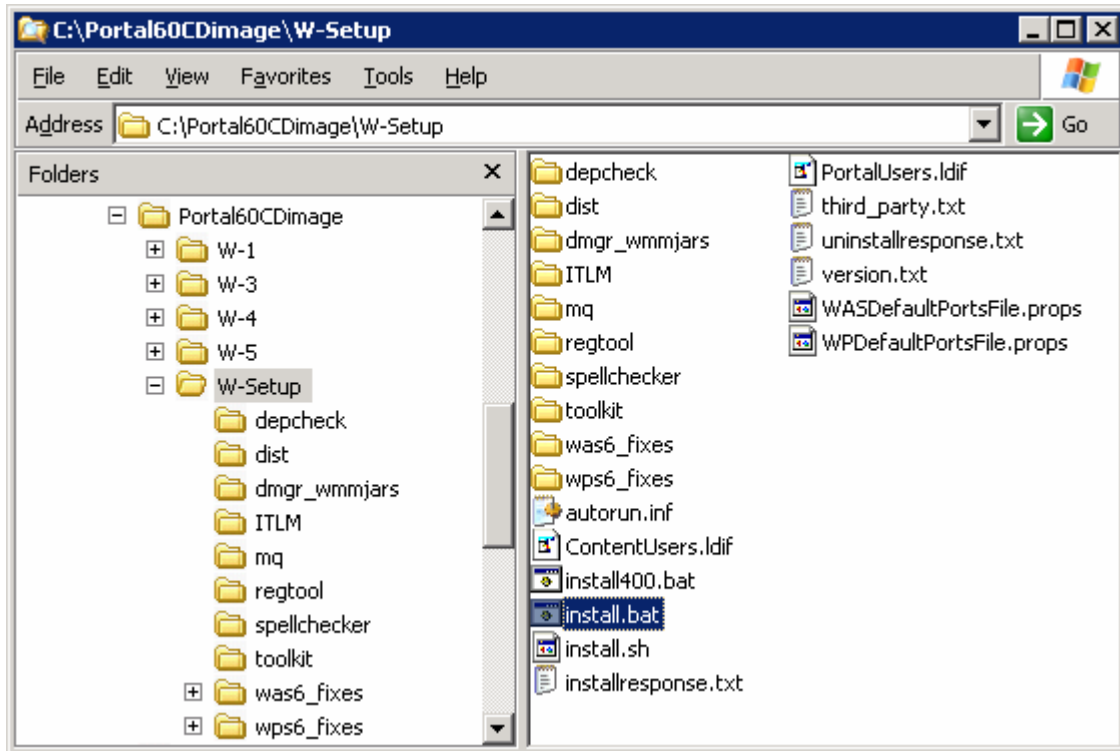


Follow the instructions below to complete the WebSphere Portal Server V6.0 installation:



4. From the directory where the WebSphere Portal Server V6.0 installation archives are extracted (Example:- **C:\Portal60CDimage**), navigate to the **W-Setup** directory and double click on **install.bat** to launch the Portal launchpad program

IBM WEBSHERE BUSINESS MONITOR 6.1 – LAB EXERCISE

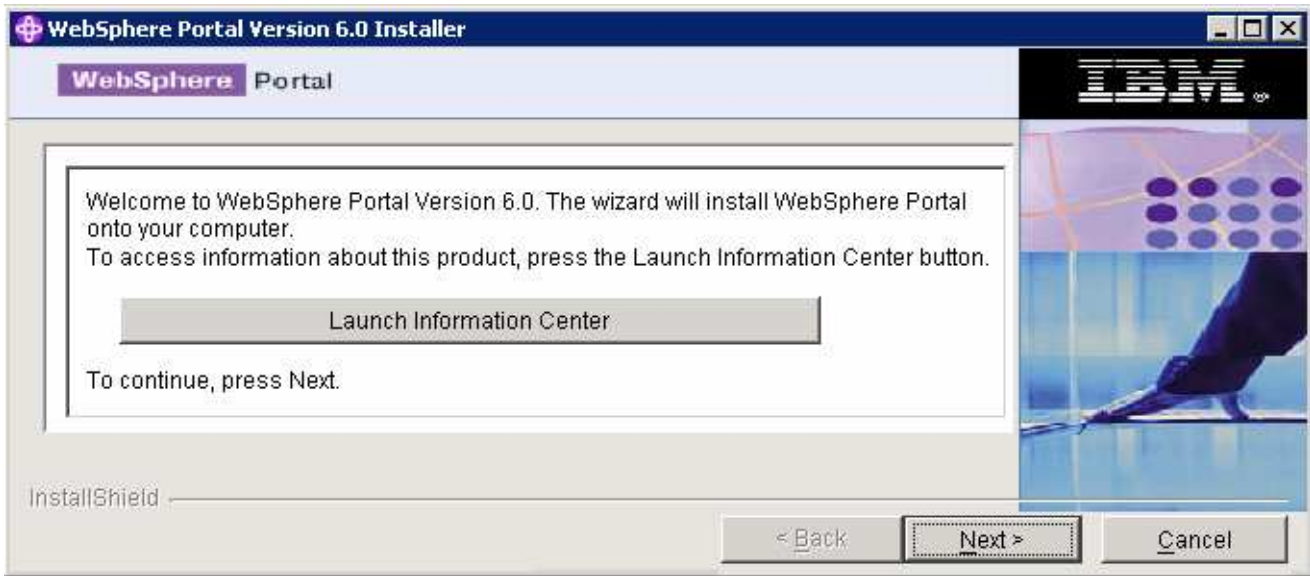


___ 5. Select the language as **English** or the language you want from the drop down list

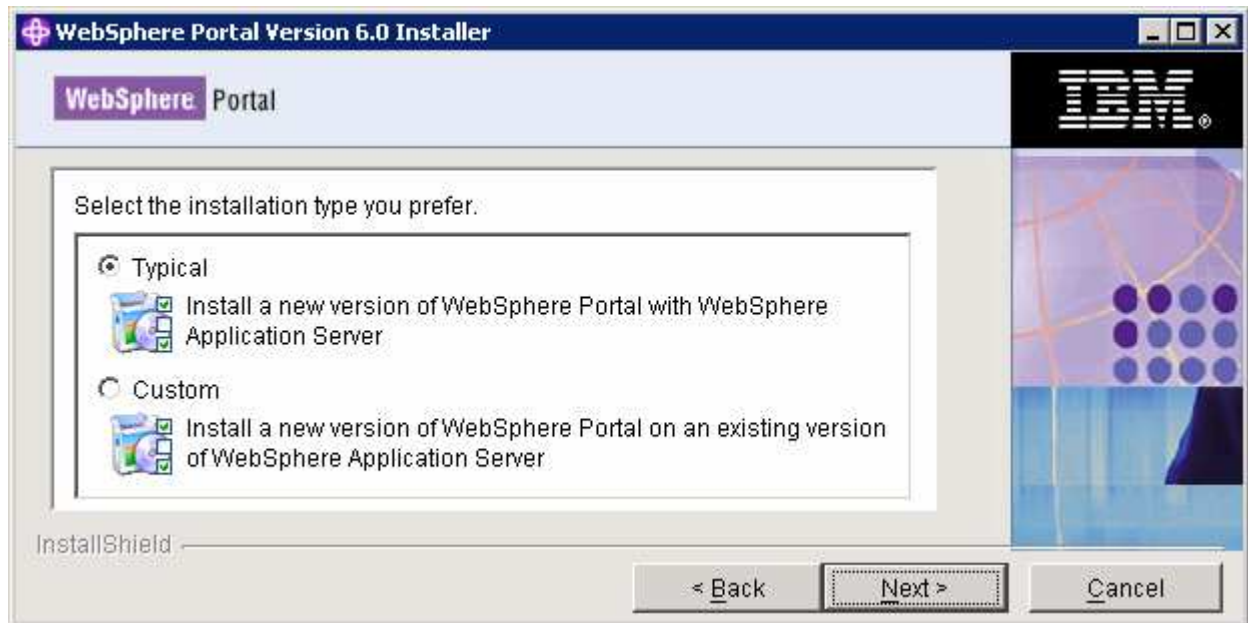


___ 6. Click **OK**. The WebSphere Portal Server V6.0 Installer wizard is launched

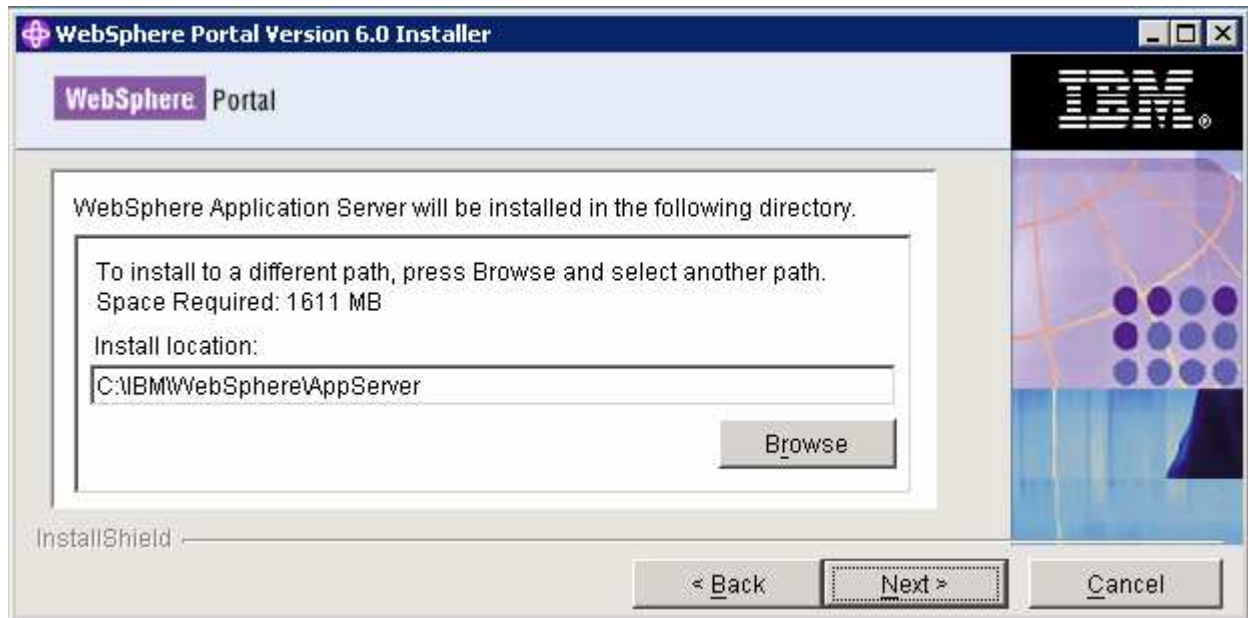
IBM WEBSHERE BUSINESS MONITOR 6.1 – LAB EXERCISE



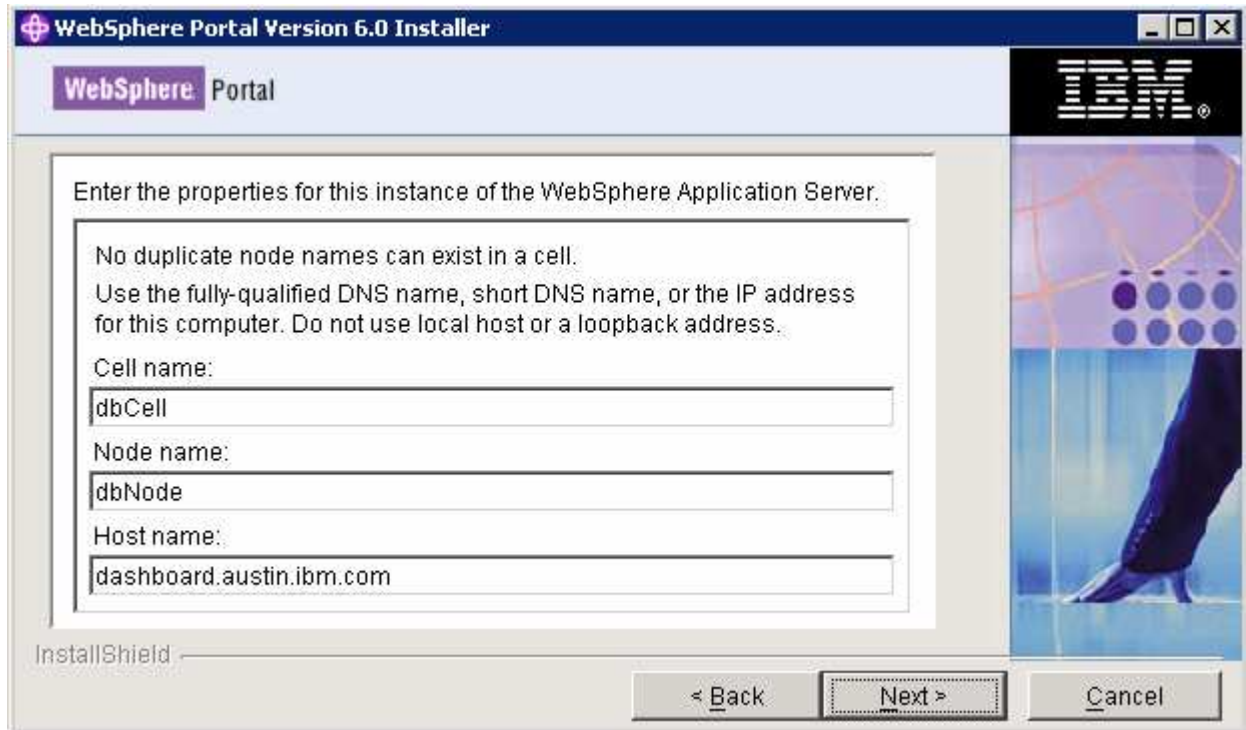
- ___ 7. Click **Next**
- ___ 8. In the following panel, read the license agreement. If you agree to the terms, select the radio button next to '**I accept both the IBM and the non-IBM terms**'
- ___ 9. Click **Next**
- ___ 10. In the following panel, ensure that the radio button for **Typical** is selected



- ___ 11. In the following panel, click the **Browse** button and specify a different directory for the WebSphere Application Server '**Install location**'
 - ___ a. Install location : **C:\IBM\WebSphere\AppServer**



- ___ 12. Click **Next**
- ___ 13. In the following panel, set the cell name, node name and the host name
- ___ a. Cell Name : **dbCell**
 - ___ b. Node Name : **dbNode**
 - ___ c. Host Name : **< fully qualified host name of the machine >**
- Example: dashboard.austin.ibm.com**



___ 14. Click **Next**

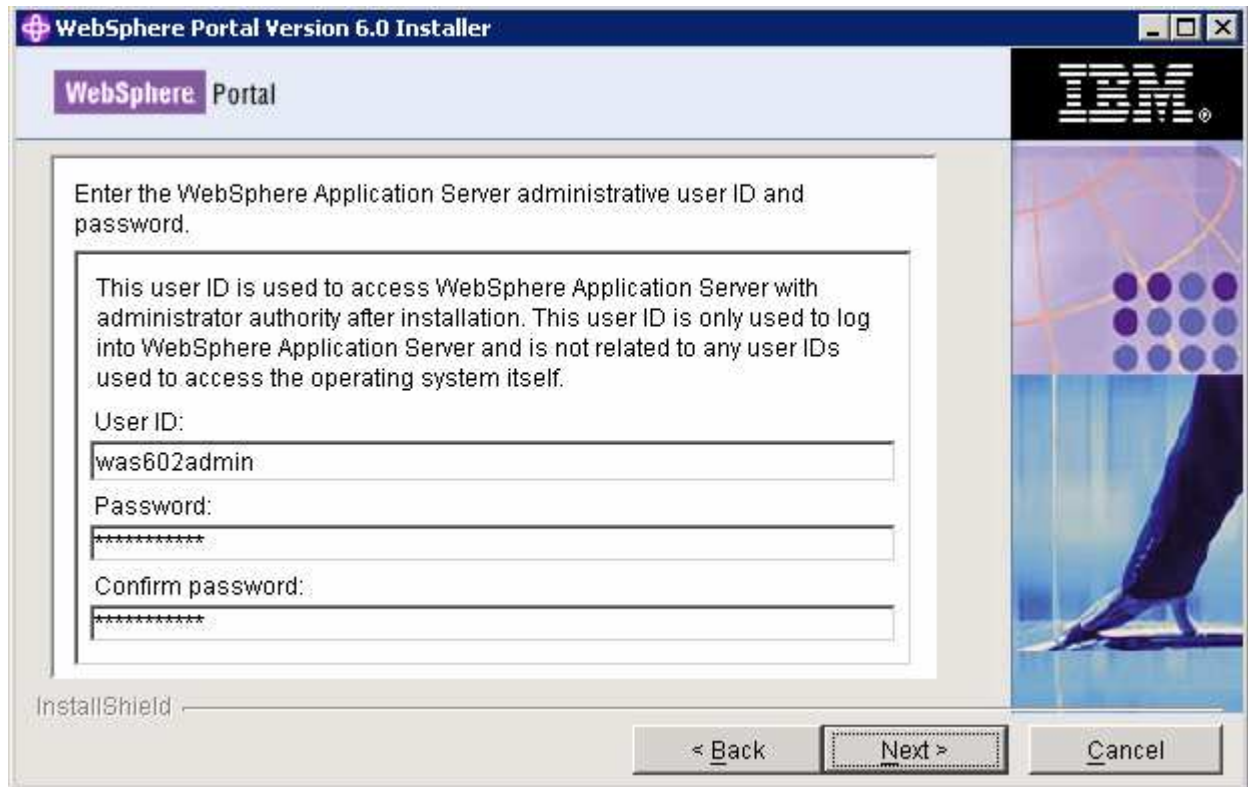
___ 15. In the following panel, enter the administrative User ID and Password for the WebSphere Application Server V6.0.2

__ a. User ID : **was602admin**

__ b. Password : **was602admin**

__ c. Confirm Password : **was602admin**

IBM WEBSHERE BUSINESS MONITOR 6.1 – LAB EXERCISE



___ 16. Click **Next**

___ 17. In the following panel, select the radio button for '**Do not install WebSphere Process Server**'



IBM WEBSHERE BUSINESS MONITOR 6.1 – LAB EXERCISE

___ 18. Click **Next**

___ 19. In the following panel, accept the default '**WebSphere Portal Installation directory**'

___ a. WebSphere Portal Installation directory : **C:\IBM\WebSphere\PortalServer**



___ 20. Click **Next**

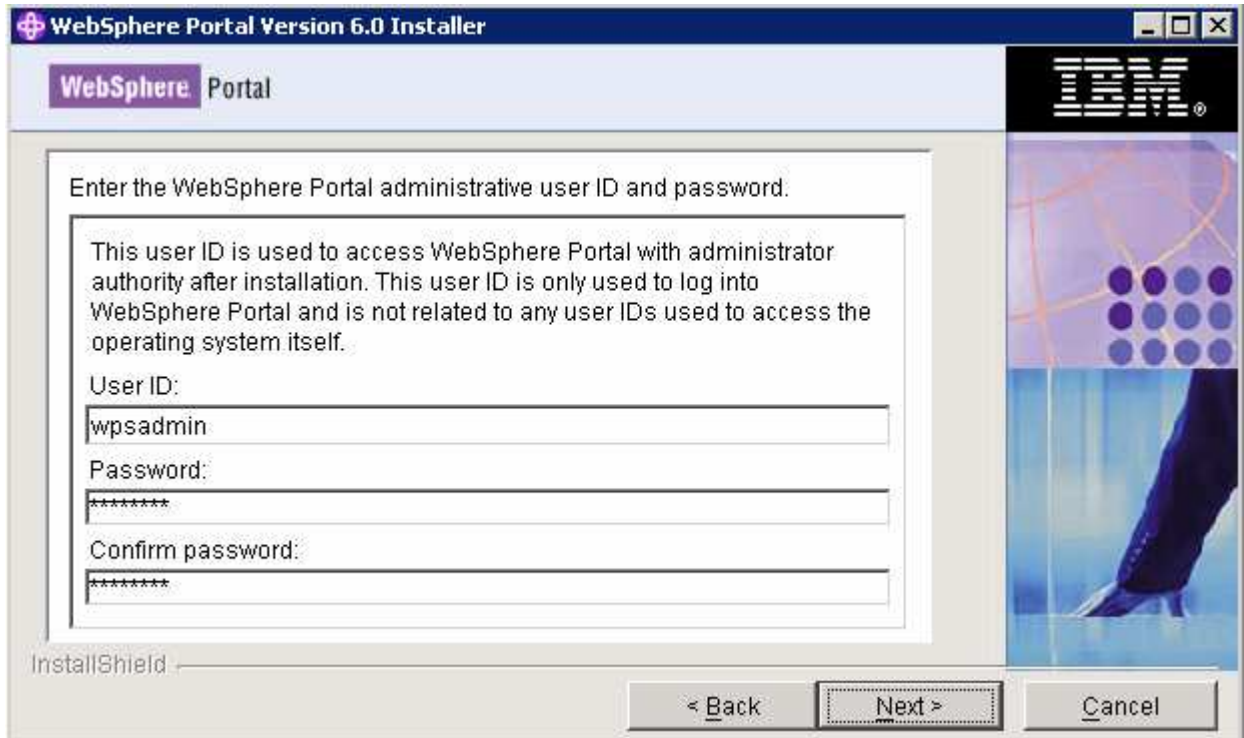
___ 21. In the following panel, enter the administrative User ID and Password for the WebSphere Portal Server

___ a. User ID : **wpsadmin**

___ b. Password : **wpsadmin**

___ c. Confirm Password : **wpsadmin**

IBM WEBSHERE BUSINESS MONITOR 6.1 – LAB EXERCISE



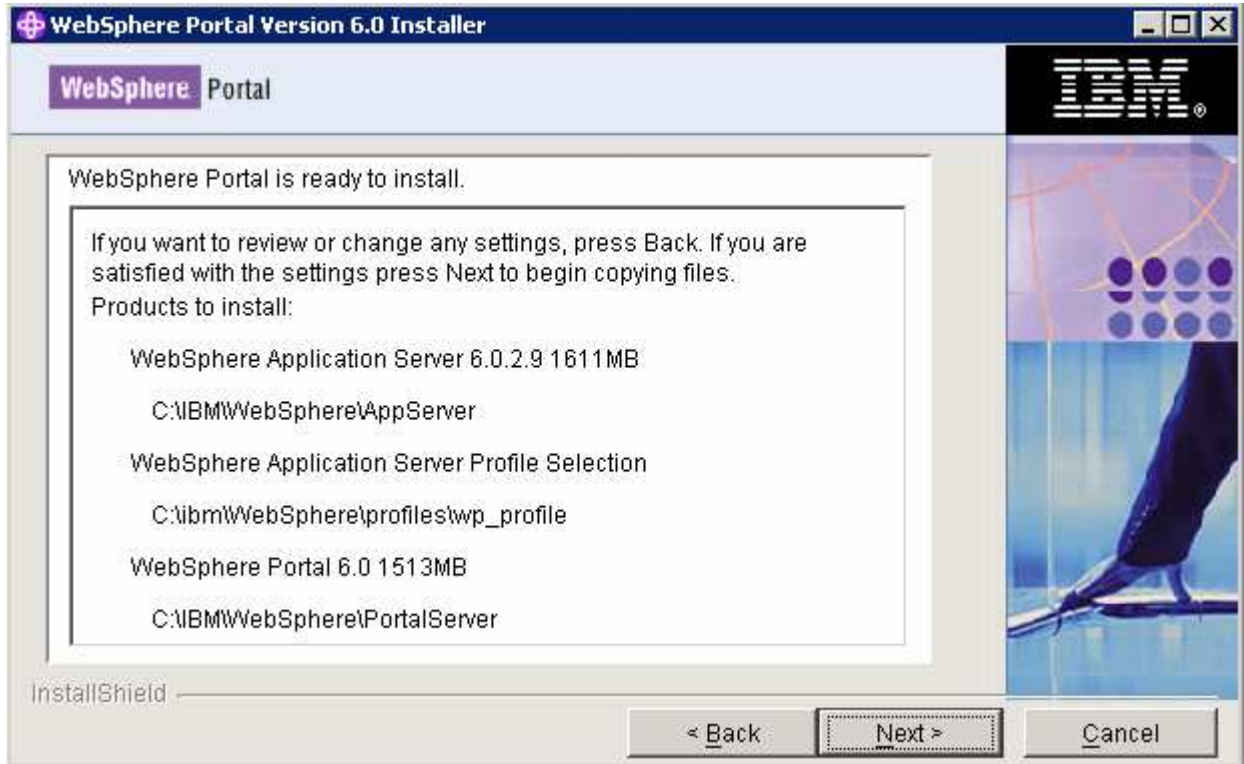
___ 22. Click **Next**

___ 23. In the following panel, do not select any products listed to run as a Windows service. Accept the defaults

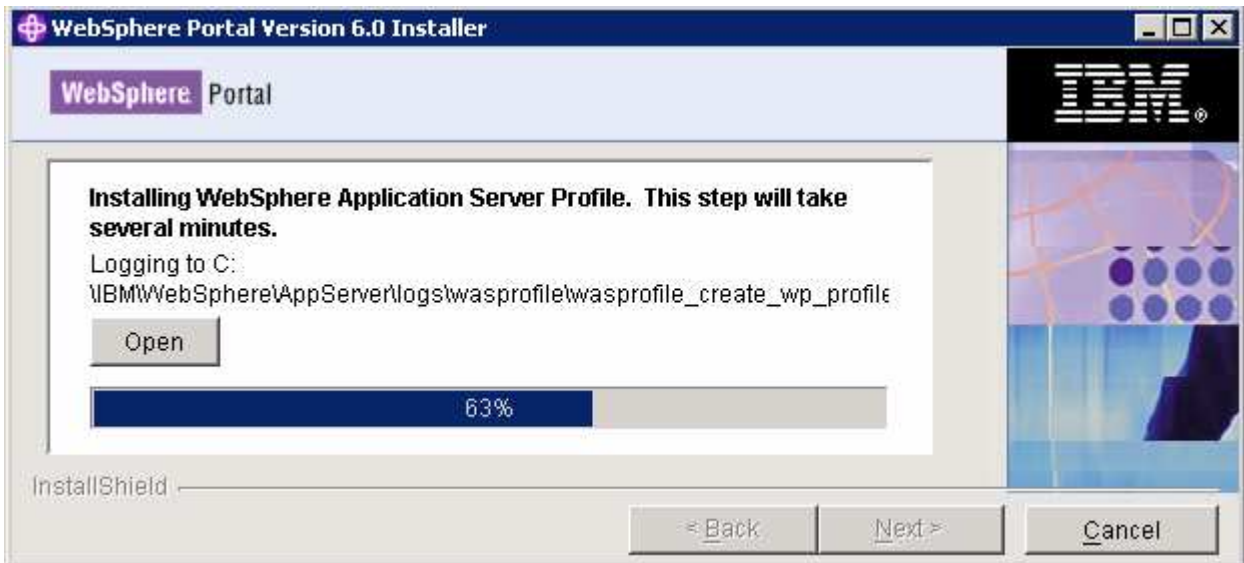


IBM WEBSHERE BUSINESS MONITOR 6.1 – LAB EXERCISE

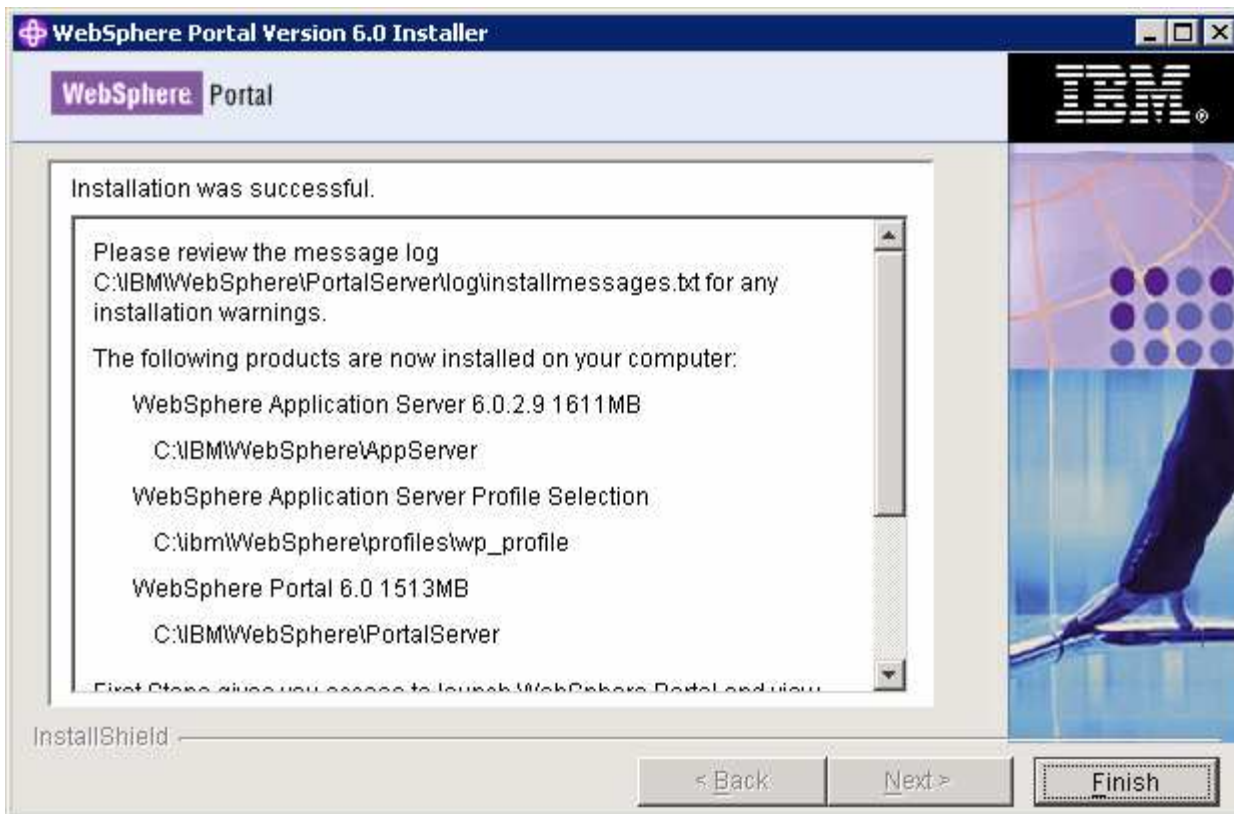
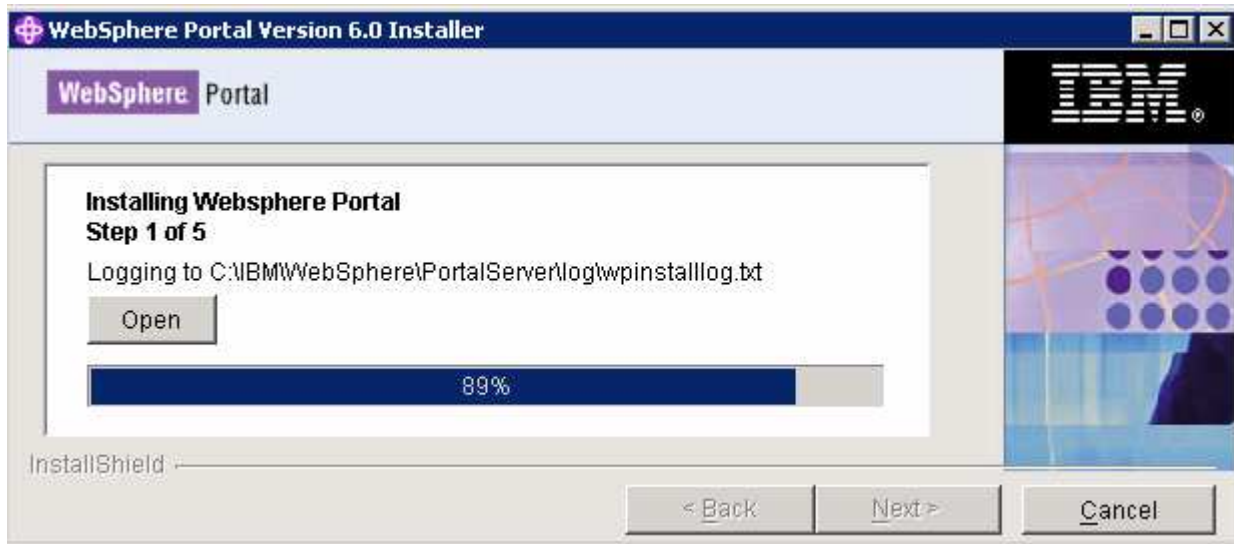
- ___ 24. Click **Next**
- ___ 25. Review the installation **Summary** in the following panel



- ___ 26. Click **Next**
- ___ 27. The installation progresses with WebSphere Application Server, creates a WebSphere Application Server profile and eventually installs WebSphere Portal Server



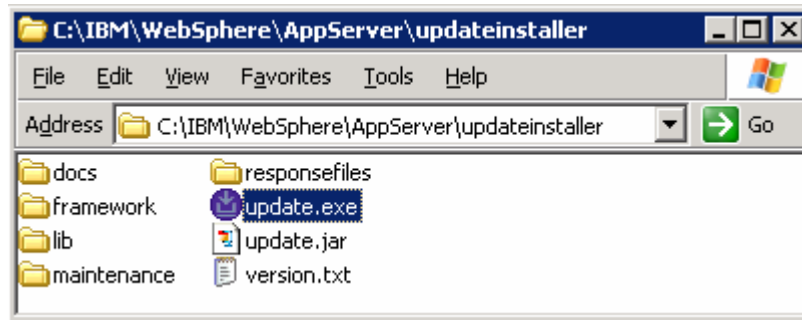
IBM WEBSHERE BUSINESS MONITOR 6.1 – LAB EXERCISE



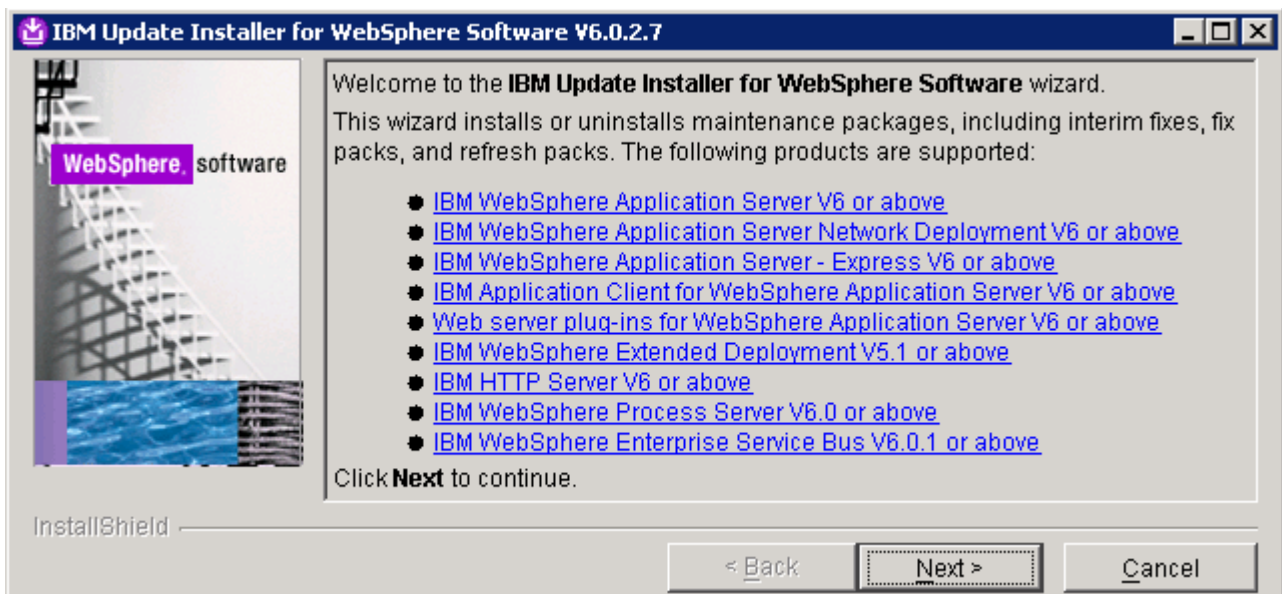
___ 28. Click **Finish**

I. Updating WebSphere Application Server V6.0.2.9 base to V6.0.2.17

- ___ 1. Stop WebSphere Application Server and Portal Server
- ___ 2. Obtain the WebSphere Application Server V6.0.2 Fix Pack 17 and the update installer
 - ___ a. 6.0.2-WS-WAS-WinX32-FP00000017.zip (This archive includes both the fix pack and the update installer)
 - ___ b. 6.0.2-WS-WASJavaSDK-WinX32-FP00000021.zip (updates WebSphere Application Server Java SDK)
- ___ 3. Navigate to the <WAS602_HOME> directory and remove the contents of the **updateinstaller** directory. <WAS602_HOME> is the path of the WebSphere Application Server installation
 - <WAS602_HOME> : C:\IBM\WebSphere\AppServer
- ___ 4. Unpack the **6.0.2-WS-WAS-WinX32-FP00000017.zip** file into the <WAS602_HOME>\updateinstaller directory. The unpacked **6.0.2-WS-WAS-WinX32-FP00000017.zip** file to the **updateinstaller** directory should look like the picture shown below:

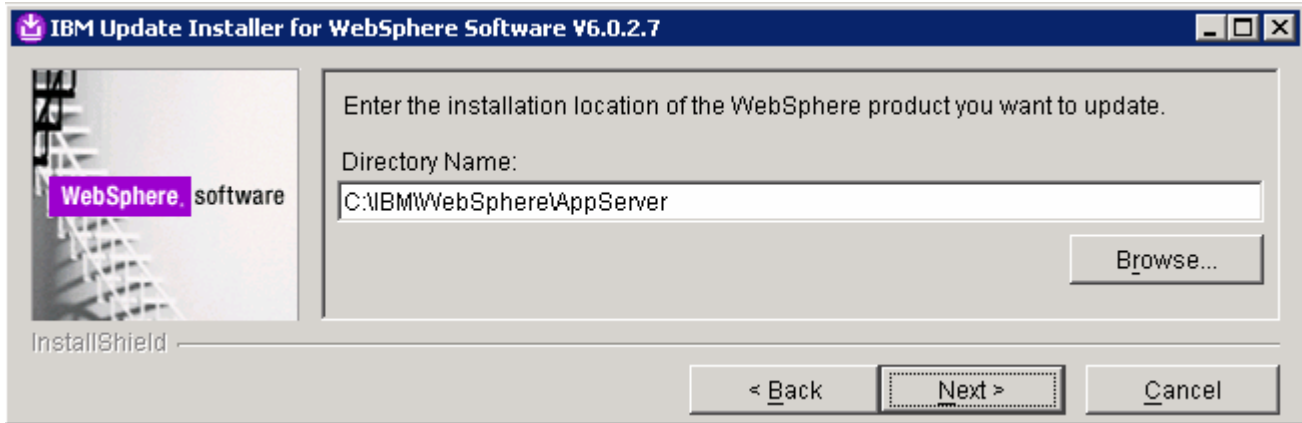


- ___ 5. Navigate to the <WAS602_HOME>\updateinstaller and double click **update.exe** to launch the WebSphere Application Server update installer wizard
- ___ 6. Read the instructions on the update installer **Welcome** screen

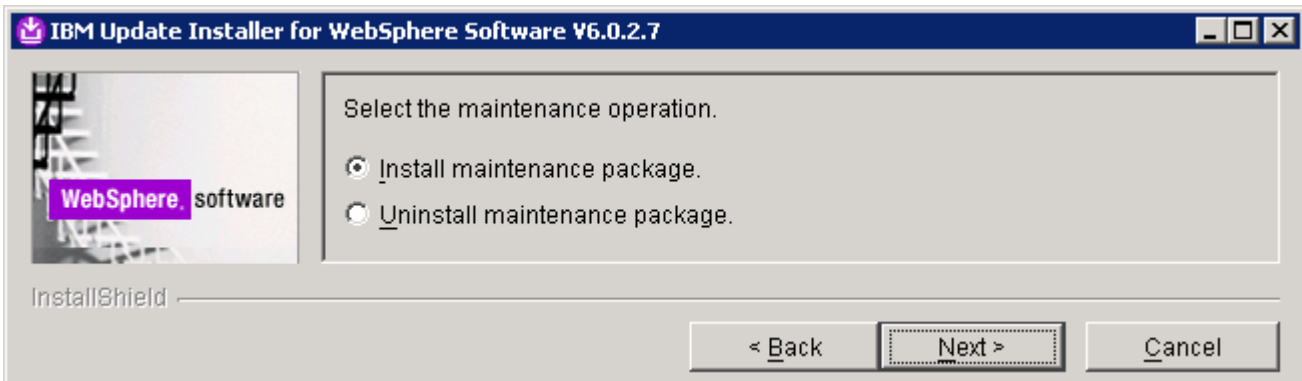


IBM WEBSHERE BUSINESS MONITOR 6.1 – LAB EXERCISE

- ___ 7. Click **Next**
- ___ 8. In the following panel, ensure the WebSphere Application Server V6.0.2.9 location is set to **<WAS602_HOME>**. Click the browse button to set the correct location
 - ___ a. Directory Name : **C:\WebSphre\AppServer**

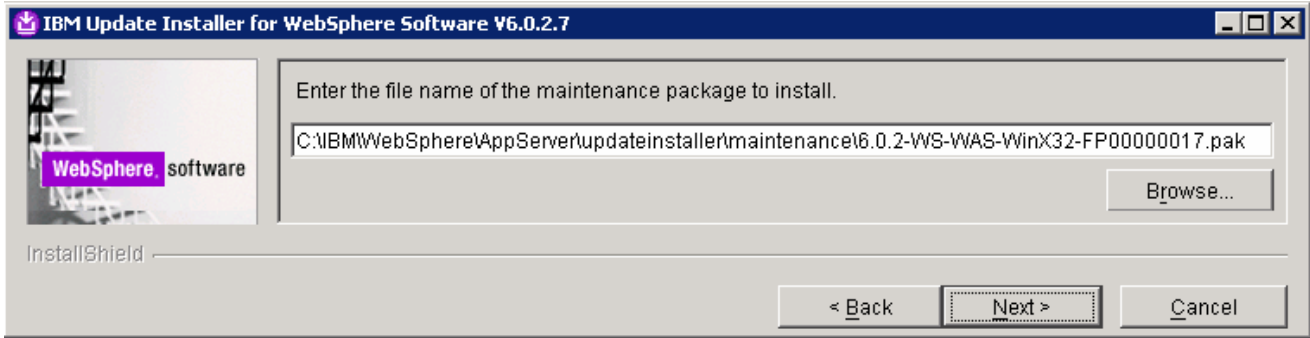


- ___ 9. Click **Next**
- ___ 10. In the following panel, select the radio button for '**Install maintenance package**'



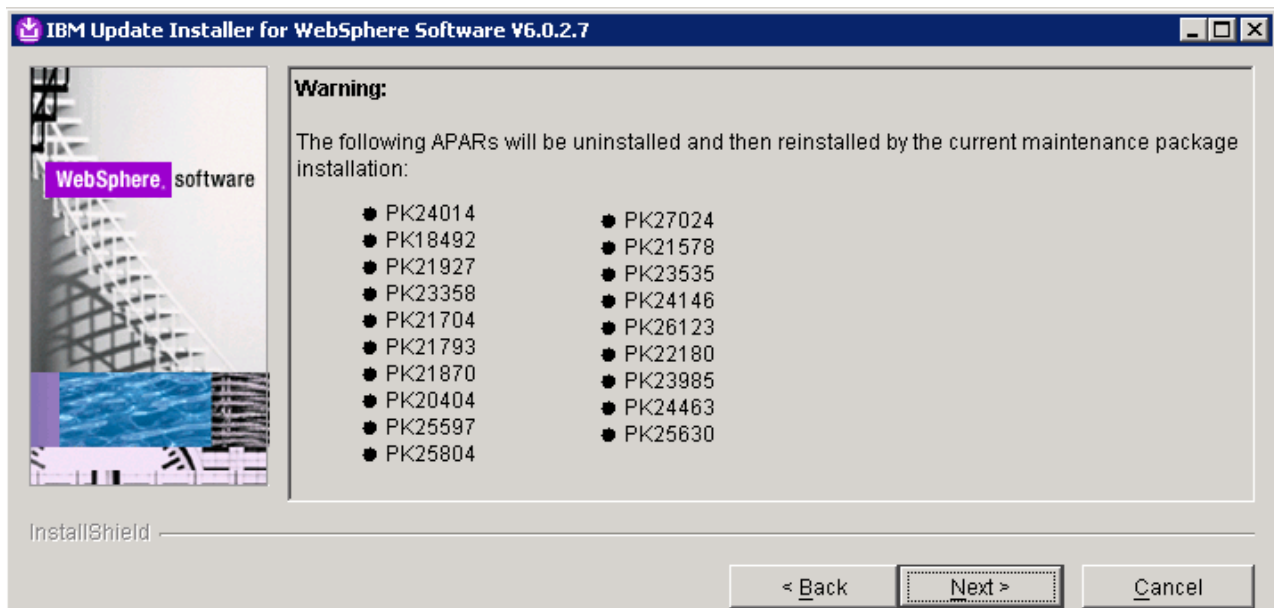
- ___ 11. Click **Next**
- ___ 12. In the following panel, click the **Browse** button and navigate to the **maintenance** directory to locate the **6.0.2-WS-WAS-WinX32-FP00000017.pak** file
 - ___ a. Maintenance package location: **<WAS602_HOME>\updateinstaller\maintenance**

IBM WEBSHERE BUSINESS MONITOR 6.1 – LAB EXERCISE



___ 13. Click **Next**

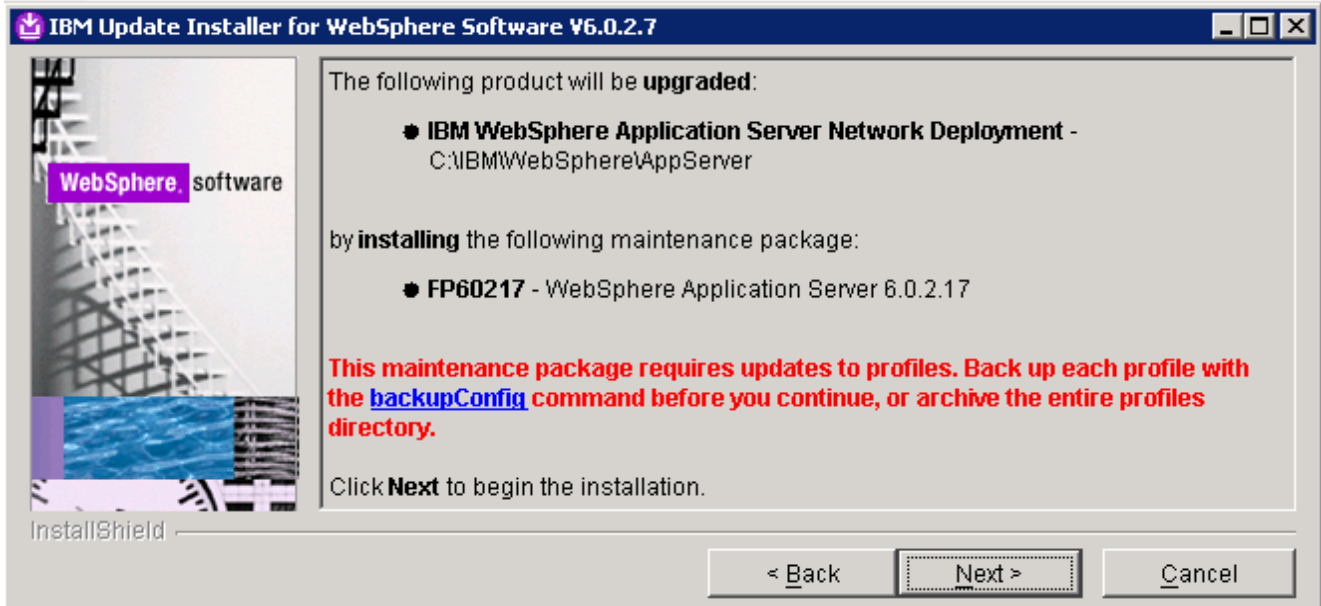
___ 14. In the following panel, read the **Warning** message



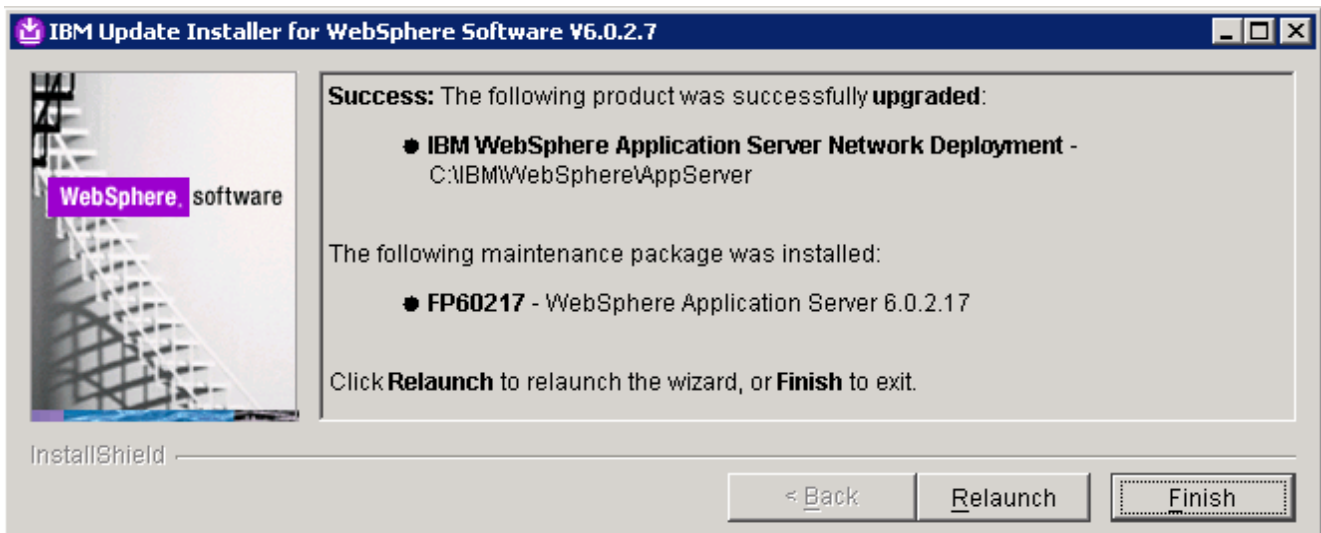
___ 15. Click **Next**

___ 16. Review the fix pack installation summary in the following panel

IBM WEBSHERE BUSINESS MONITOR 6.1 – LAB EXERCISE



- ___ 17. Click **Next** to continue with the installation
- ___ 18. The installation progresses and takes a few minutes



- ___ 19. Click **Finish** once the installation is complete

Note: To investigate the update logs: `<WAS602_HOME>/logs/update`. An exclusive directory named after the fix pack (Example: `6.0.2-WS-WAS-WinX32-FP00000017-Operation`) is created under the `update` directory.

- ___ 20. Open a command line window and change directory to `<WAS60_HOME>bin` and run the `versionInfo` command. Ensure that the WebSphere Application Server V6.0.2.9 is upgraded to version 6.0.2.17. Look for the following message traced as a result of the `versionInfo` command

IBM WEBSHERE BUSINESS MONITOR 6.1 – LAB EXERCISE

```

C:\WINDOWS\system32\cmd.exe
C:\IBM\WebSphere\AppServer\bin>versionInfo.bat
WUER0010I: Copyright (c) IBM Corporation 2002, 2005; All rights reserved.
WUER0011I: WebSphere Application Server Release 6.0
WUER0012I: VersionInfo reporter version 1.15.3.1, dated 4/25/05

-----
IBM WebSphere Application Server Product Installation Status Report
-----

Name                IBM WebSphere Application Server - ND
Version             6.0.2.17
ID                  ND
Build Level         cf170648.10
Build Date          11/29/06

```

- ___ 21. Close the command line window
- ___ 22. Now update the WebSphere Application Server V6.0.2.17 with SDK Fix Pack 21. Copy the **6.0.2-WS-WASJavaSDK-WinX32-FP00000021.zip** file to the **maintenance** directory (<WAS602_HOME>\updateinstaller\maintenance)



- ___ 23. Navigate to the <WAS602_HOME>\updateinstaller and double click **update.exe** to launch the WebSphere Application Server update installer wizard
- ___ 24. Read the instruction on the update installer **Welcome** screen and Click **Next**
- ___ 25. In the following panel, ensure the WebSphere Application Server V6.0.2.17 location is set to <WAS602_HOME>. Click the browse button to set the correct location
- ___ a. Directory Name : **C:\WebSphre\AppServer**
- ___ 26. Click **Next**
- ___ 27. In the following panel, select the radio button next to “**Install maintenance package**” and click **Next**
- ___ 28. In the following panel, click the **Browse** button and navigate to the **maintenance** directory to locate the **6.0.2-WS-WASJavaSDK-WinX32-FP00000021.zip** file
- ___ a. Maintenance package location: <WAS602_HOME>\updateinstaller\maintenance
- ___ 29. Click **Next**
- ___ 30. Review the fix pack installation summary in the following panel and click **Next**
- ___ 31. This action copies a new JVM to the current WebSphere Application server home directory. Click the **Relaunch** button and follow the instructions to install the WebSphere Application Server SDK
- ___ 32. Click **Finish** once the installation is complete

2. Updating WebSphere Portal Server V6.0 with fix pack 6.0.1.1

Prerequisites:-

- Perform the following steps to change the timeout request for the Simple Object Access Protocol (SOAP) client; the default value is 180 seconds:
 - Open a command prompt and change to the `<WP_PROFILE_HOME>/properties` directory
 - Edit the `soap.client.props` file; change the timeout request line to `com.ibm.SOAP.requestTimeout=6000`
 - Save your changes
- Perform the following steps to change the HTTP connection timeout value for the **WebSphere_Portal** server:
 - Click **Servers** → **Application Servers** → **WebSphere_Portal** → **Web container settings** → **Web container transport chains** → **WCInboundDefault**
 - Increase the timeout values for each entry listed in the Web container transport chains section. Click **HTTP Inbound Channel** and make the following changes:
 - Read timeout value to 180
 - Write timeout value to 180
 - Save your changes

___ 1. Stop the WebSphere Application Server and the Portal Server

Note: Portal Update Installer wizard reads the **PortalAdminPwd** and **WasPassword** variables in the **wpconfig.properties** located in `<PORTAL_HOME>\config` directory. Edit the file and update the Portal Administrative user password and the WebSphere Application Server Administrative user password

___ 2. Obtain the WebSphere Portal Server V6.0 Fix Pack 6.0.1.1 and the Portal update installer

__ a. PortalUpdateInstallerWIN.zip (Portal Update Installer)

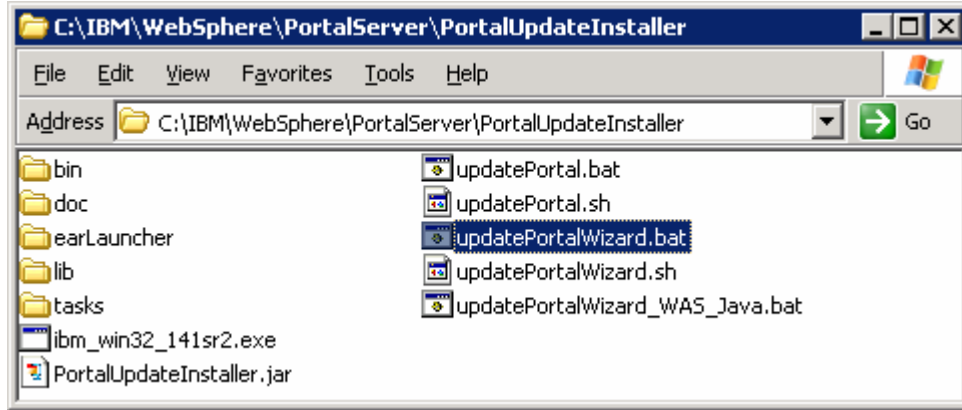
__ b. WP_PTF_6011.jar (WebSphere Portal Server cumulative fix pack)

___ 3. Create a directory named **PortalUpdateInstaller** under the `<PORTAL_HOME>` directory. `<PORTAL_HOME>` is the path of the WebSphere Portal Server

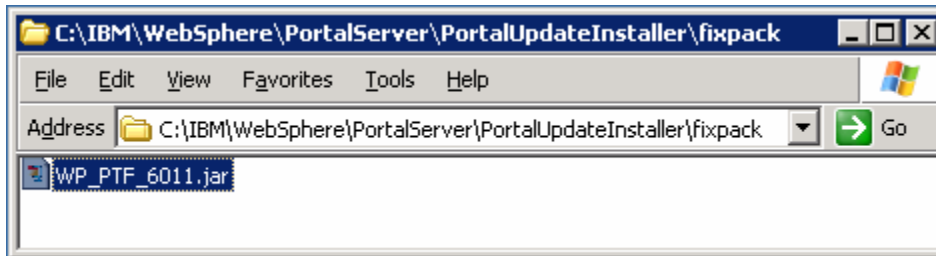
- `<PORTAL_HOME>` : C:\IBM\WebSphere\PortalServer

___ 4. Unpack **PortalUpdateInstallerWIN.zip** file into the `<PORTAL_HOME>\PortalUpdateInstaller` folder. . This should look like the picture shown below:

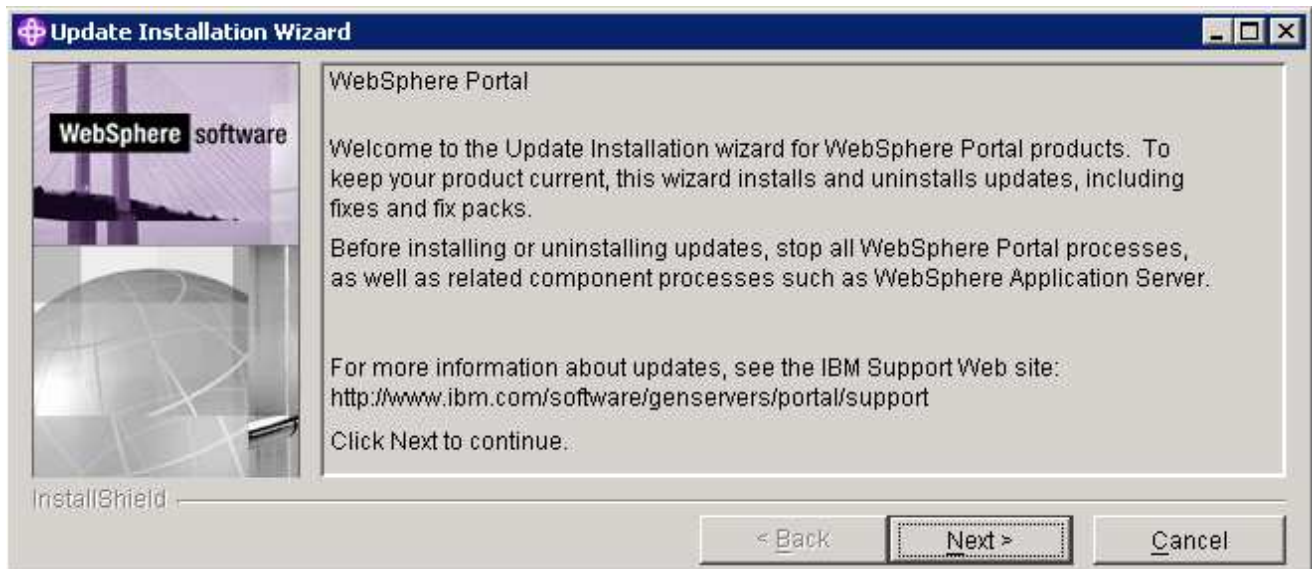
IBM WEBSHERE BUSINESS MONITOR 6.1 – LAB EXERCISE



- ___ 5. Create a directory named **fixpack** in the **PortalUpdateInstaller** directory and copy the WP_PTF_6011.jar into it as shown below:

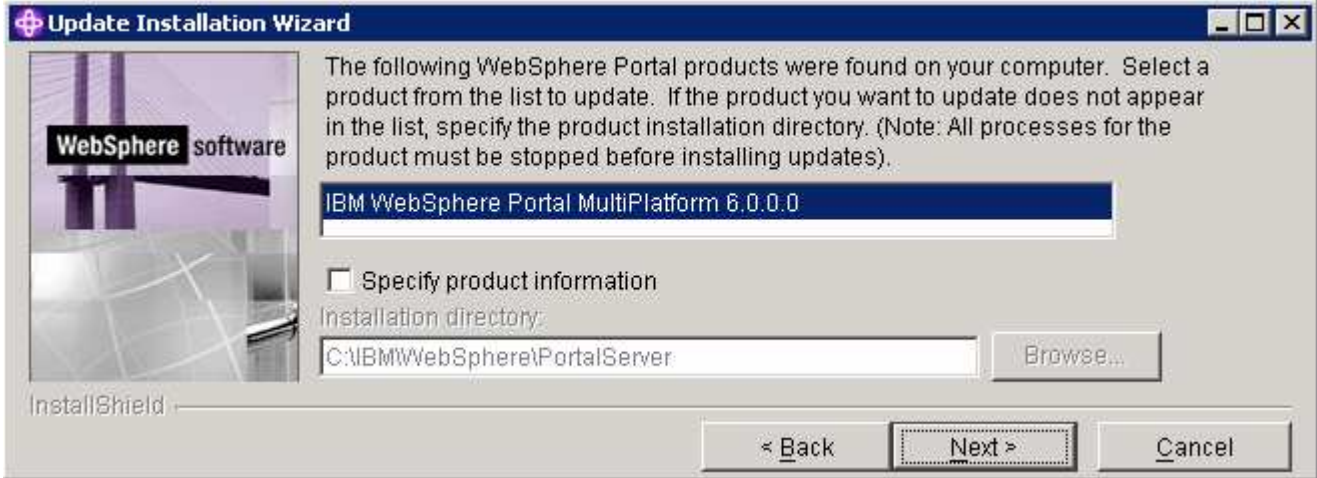


- ___ 6. Open a command line window and change directory to **<WAS602_HOME>\bin** directory. Run the **setupCmdLine.bat** command
- ___ 7. Navigate to the **<PORTAL_HOME>\PortalUpdateInstaller** and double click the **updatePortalWizard.bat** script to launch the WebSphere Portal Server update installer wizard
- ___ 8. Select the language as **English** or the language you want from the drop down list
- ___ 9. Click **OK**. The WebSphere Portal Server Update Installer Wizard opens
- ___ 10. Read the instructions in the **Welcome** screen

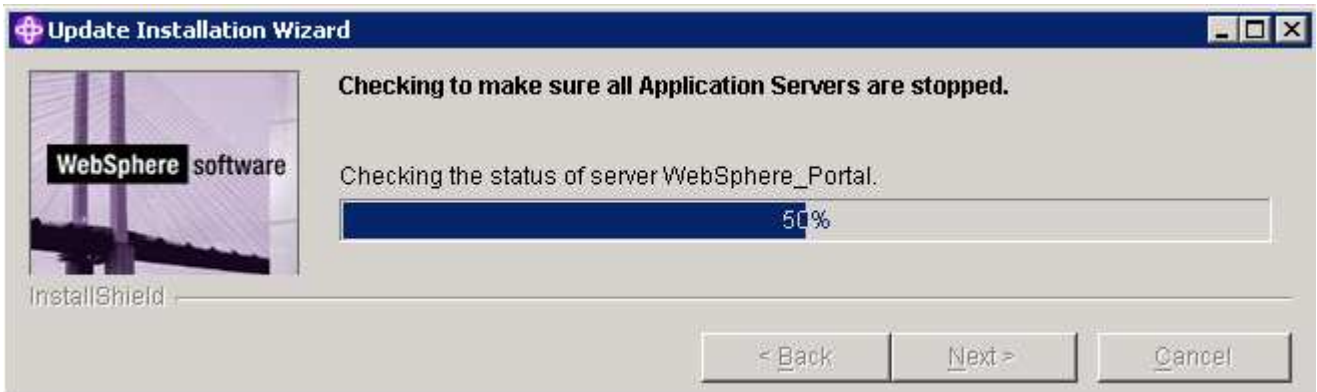


IBM WEBSHERE BUSINESS MONITOR 6.1 – LAB EXERCISE

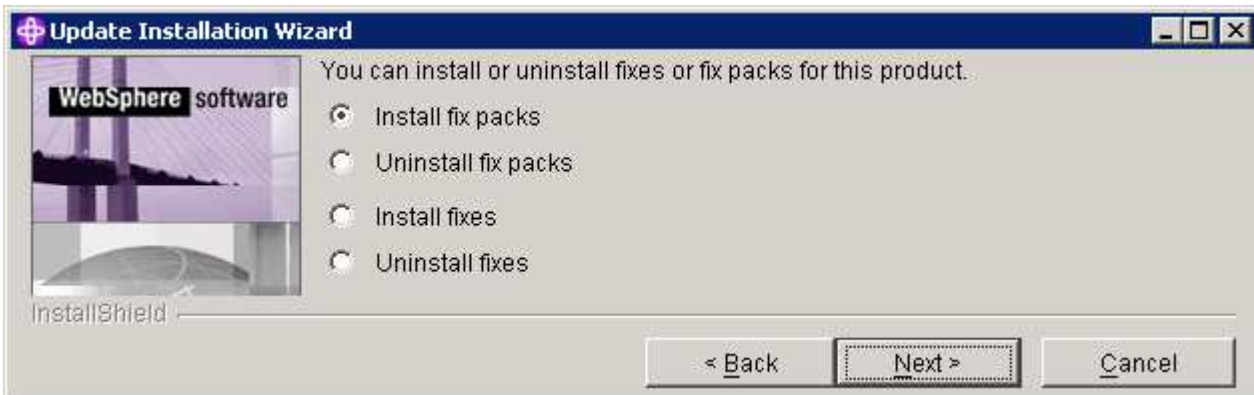
- ___ 11. Click **Next**
- ___ 12. The Portal Update Installer wizard detects the WebSphere Portal Server instances installed on the machine and lists them. Select the Portal installation to upgrade in the following panel



- ___ 13. Click **Next**
- ___ 14. The Portal Update Installer wizard checks the status of the WebSphere Application Server and the WebSphere Portal Server

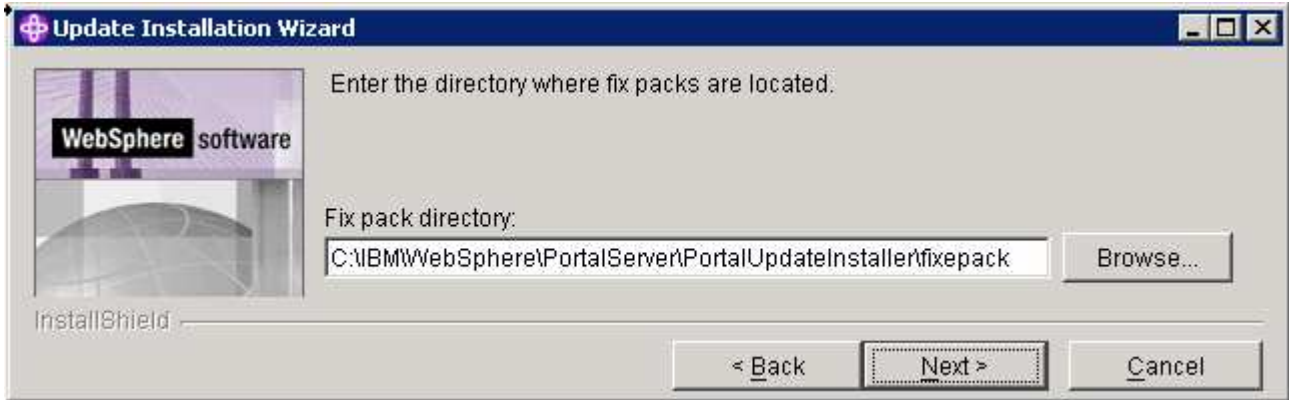


- ___ 15. In the following panel, select the radio button for '**Install fix packs**'

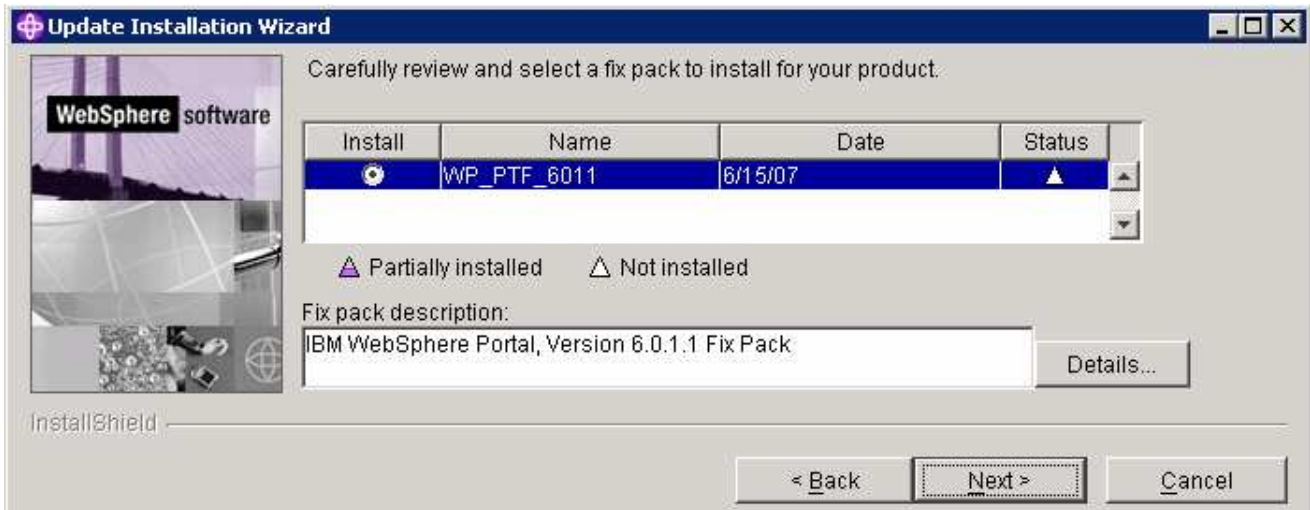


IBM WEBSHERE BUSINESS MONITOR 6.1 – LAB EXERCISE

- ___ 16. Click **Next**
- ___ 17. In the following panel, click the **Browse** button and navigate to the **fixpack** directory to locate the file
 - ___ a. Fix pack directory : <PORTAL_HOME>\PortalUpdateInstaller\fixpack

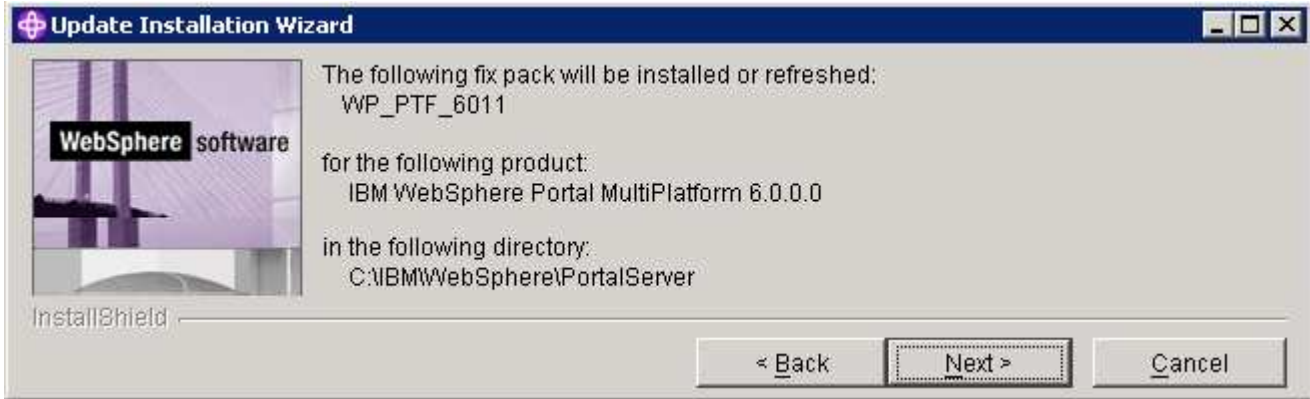


- ___ 18. Click **Next**
- ___ 19. In the following panel, the Portal Update Installer lists the fix packs loaded from the **fixpack** directory. Select the radio button next to **WP_PTF_601**



- ___ 20. Click **Next**
- ___ 21. In the following panel, review the Portal cumulative fix pack installation summary

IBM WEBSHERE BUSINESS MONITOR 6.1 – LAB EXERCISE



- ___ 22. Click **Next**
- ___ 23. The Portal cumulative fix pack installation progresses and will take a few minutes to complete
- ___ 24. Click **Finish** when the installation is complete
- ___ 25. Verify the version of the Portal Server installation
- ___ a. Open a command window and change directory to **<PORTAL_HOME>\bin** and run the following command:
- **WPVersionInfo.bat**

```

C:\WINDOWS\system32\cmd.exe
C:\IBM\WebSphere\PortalServer\bin>WPVersionInfo.bat
Name           IBM WebSphere Portal MultiPlatform
Version        6.0.1.1
ID             MP
Build Level    wp6011_073_01
Build Date     06/15/2007
  
```

Task 2: Deploy human tasks Monitor model and configure connections for Web-based dashboards

If you skipped the model deployment during the monitor server installation, you can manually deploy the Human Tasks Monitor model and configure connections for web-based dashboards to communicate with the WebSphere Process Server. The following instructions are completed on the monitor server machine.

- ___ 1. Start the monitor server profile and launch the WebSphere Application Server administrative console. (Example: <http://localhost:9060/admin>) enter the username and password and log on.
- ___ 2. In the left pane, expand **Application** and click the **Enterprise Applications** link.
- ___ 3. Click the **Install** button
- ___ 4. Select the **Local file system** and click the **Browse** button
- ___ 5. Navigate to the folder that contains the .ear file at **<WAS61_HOME>\installableApps.wbm\monitorModels** and the select **GlobalHTMMApplication.ear** file, click **Open**
- ___ 6. Select the radio button for 'Prompt me only when additional information is required'
- ___ 7. Click **Next** and accept the defaults for all the panels until you reach the **Summary** panel
- ___ 8. Click **Finish**
- ___ 9. Save to the master configuration

Now configure the Business Process Choreographer connection information manually for web-based dashboards. Complete the following steps:

- ___ 10. In the left pane, expand **Application Servers** and click the 'server1' link to the right
- ___ 11. Expand '**Java and Process Management**' and click the '**Process Definition**' link
- ___ 12. Click on '**Java Virtual Machine**' under 'Additional Properties'
- ___ 13. Click on '**Custom Properties**' under 'Additional Properties'
- ___ 14. Click the **New** button
- ___ 15. Enter the following values
 - ___ a. Name : **DashboardBPCHost**
 - ___ b. Value : <fully qualified host name of the WebSphere Process server>

IBM WEBSHERE BUSINESS MONITOR 6.1 – LAB EXERCISE

General Properties

* Name
DashboardBPCHost

* Value
procserver.austin.ibm.com

Description

Apply Reset Cancel

___ 16. Click **OK**

___ 17. Now click the New button again 'link

___ 18. Enter the following values:

__ a. Name : **DashboardBPCRMIPort**

__ b. Port : < RMI port of the WebSphere Process Server> (default is 2809)

General Properties

* Name
DashboardBPCRMIPort

* Value
2809

Description

Apply Reset Cancel

___ 19. Click **OK**

___ 20. Save the changes to the master configuration

___ 21. Restart the server for the changes to take effect

Task 3: Human tasks configuration for portlet-based dashboards

If the WebSphere Process Server information was not readily available during the portlet-based dashboards installation to configure connections, you can manually set connection information for Business Process Choreographer. The following instructions must be completed on the portlet-based dashboards machine.

- ___ 1. Start the 'WebSphere_Portal' server and launch the WebSphere Application Server administrative console. (Example: <http://localhost:10027/admin>) enter the username and password and log on.
- ___ 2. In the left pane, expand **Application Servers** and click the 'WebSphere_Portal' link to the right
- ___ 3. Expand '**Java and Process Management**' and click the '**Process Definition**' link
- ___ 4. Click on '**Java Virtual Machine**' under 'Additional Properties'
- ___ 5. Click on '**Custom Properties**' under 'Additional Properties'
- ___ 6. Click the **New** button
- ___ 7. Enter the following values
 - ___ a. Name : **DashboardBPCHost**
 - ___ b. Value : <fully qualified host name of the WebSphere Process server>

General Properties

* Name

* Value

Description

Apply Reset Cancel

- ___ 8. Click **OK**
- ___ 9. Now click the New button again
- ___ 10. Enter the following values:
 - ___ a. Name : **DashboardBPCRMIPort**
 - ___ b. Port : < RMI port of the WebSphere Process Server> (default is 2809)

IBM WEBSHERE BUSINESS MONITOR 6.1 – LAB EXERCISE

General Properties

* Name

* Value

Description

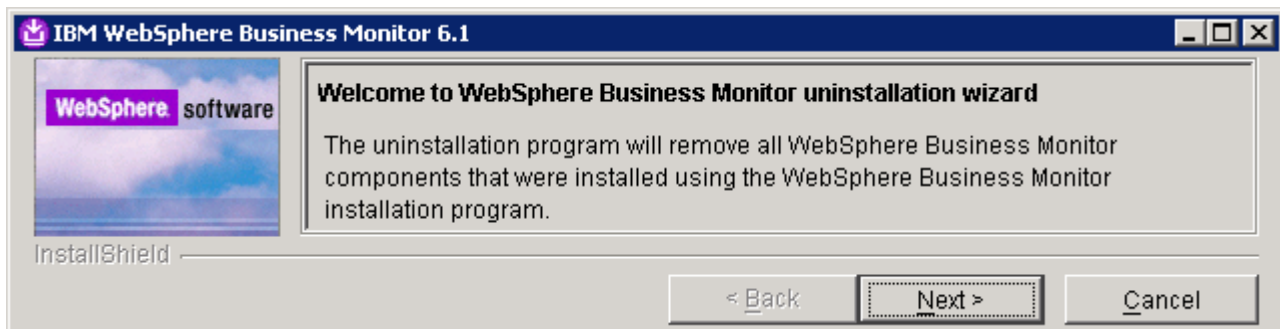
- ___ 11. Click **OK**
- ___ 12. Save the changes to the master configuration
- ___ 13. Restart the server for the changes to take effect

Appendix 1: Uninstalling WebSphere Business Monitor and its prerequisites

Follow the instructions below to uninstall WebSphere Business Monitor V6.1:

Machine 1: Stand-alone Monitor server profile

- ___ 1. Stop the stand-alone monitor profile
 - ___ a. Open a command window, change directory to **<WBM_PROFILE_HOME>bin** and run the following command:
 - stopServer.bat server1 –username was61admin –password was61admin (security enabled)
 - stopServer.bat server1 (security not enabled)
- ___ 2. Now change directory to **<WAS61_HOME>uninstall.wbm** and double click **uninstall.exe** to launch the WebSphere Business Monitor V6.1 uninstaller wizard.



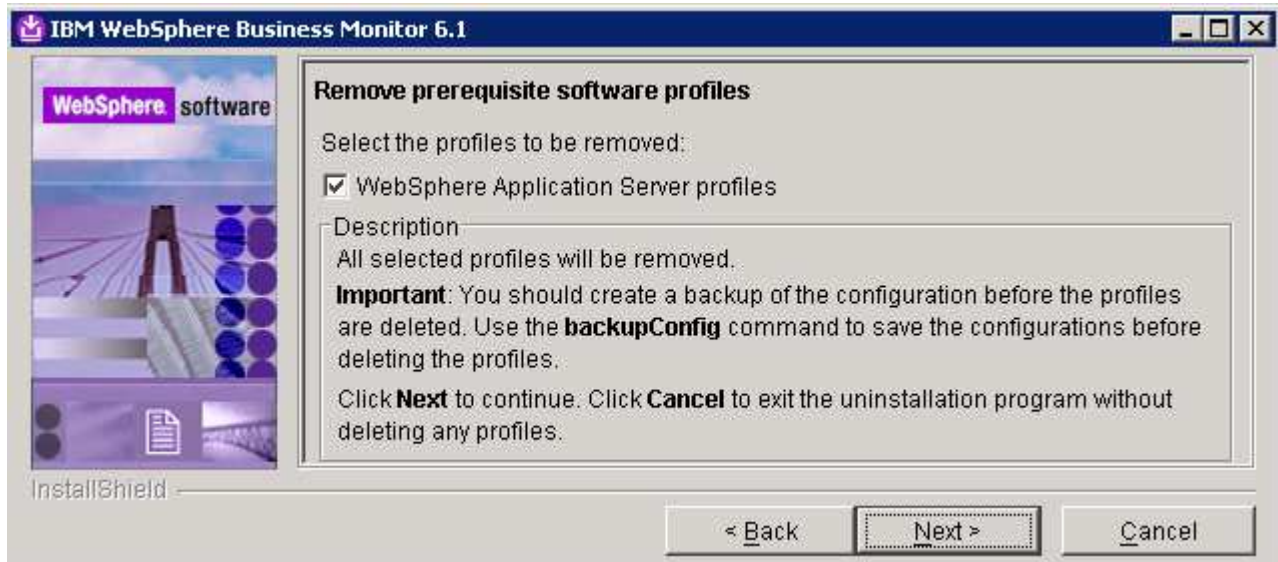
- ___ 3. Click **Next**
- ___ 4. In the following 'Remove prerequisite software' panel, select the check box next to 'WebSphere Application Server ND Version 6.1' and ensure that the correct installation location is displayed



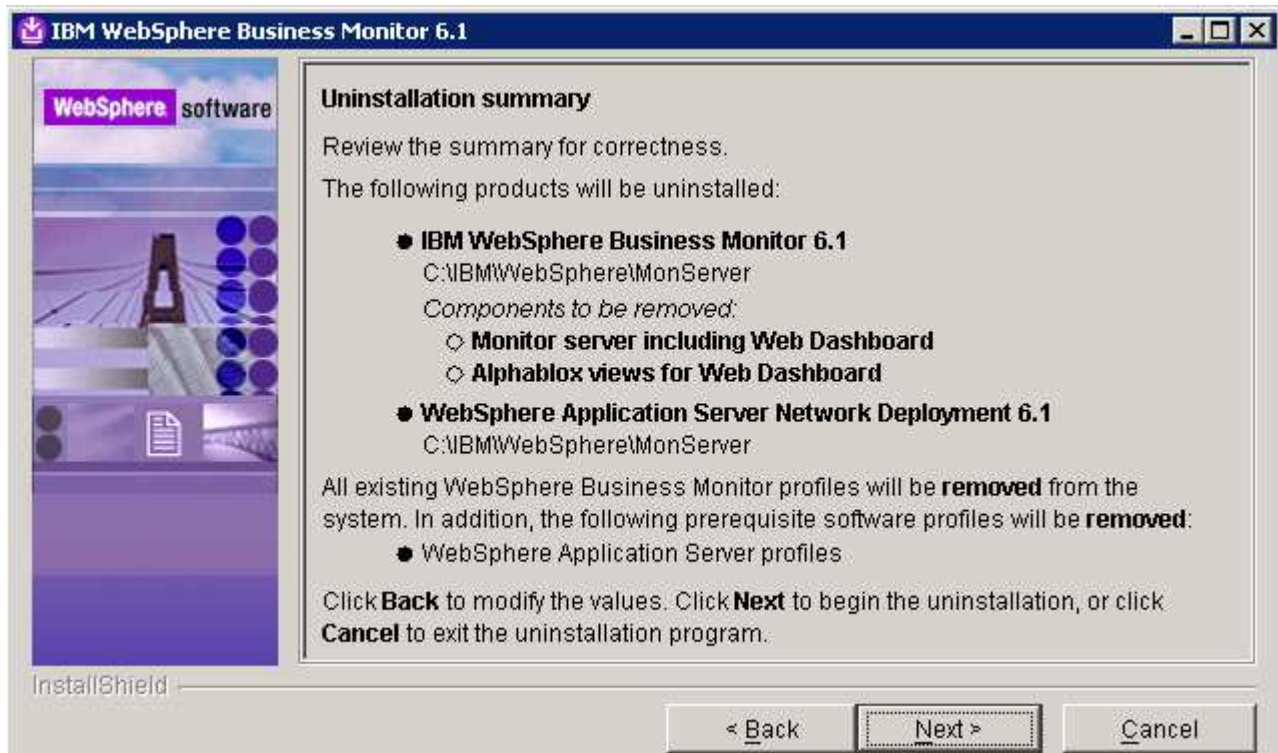
- ___ 5. Click **Next**

IBM WEBSHERE BUSINESS MONITOR 6.1 – LAB EXERCISE

- ___ 6. In the following 'Remove prerequisite software profiles' panel, select the check box next to 'WebSphere Application Server profiles'. This deletes the monitor server profile

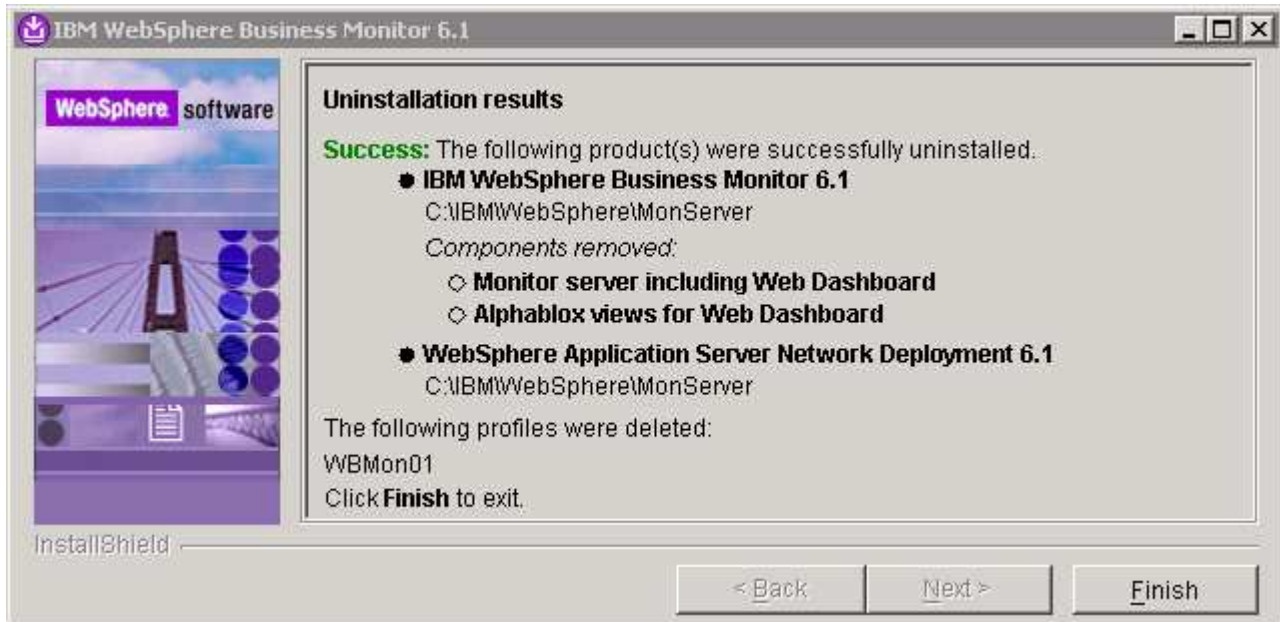


- ___ 7. Click **Next**
- ___ 8. In the following panel, review the un installation summary



- ___ 9. Click '**Next**' to continue with the installation. The uninstallation progresses
- ___ 10. Review the '**Uninstallation results**' summary

IBM WebSphere Business Monitor 6.1 – LAB EXERCISE



- ___ 11. Click **Finish**
- ___ 12. Following the same general procedure, launch the uninstallation wizard for portlet-based dashboards and follow the instructions provided by the wizard
 - ___ a. You can launch the uninstall wizard from **<PORTAL_HOME>\uninstall.wbm**

Appendix 2: Troubleshooting

Troubleshooting the monitor stand-alone installation (Machine 1)

a) Useful files for debugging initial installation problems:

__ b. Location : C:\Documents and Settings\Administrator\Local Settings\Temp\1\
(%TEMP% directory of the Administrator user)

__ c. Location : <WAS61_HOME>/logs/wbm/install

- log.txt
- trace.txt
- wbm_<TIME STAMP>_install_out.log
- wbm_<TIME STAMP>_install_trace.log

__ d. Location : <WAS61_HOME>/logs/wbm

- installconfig.log

b) Useful files for debugging monitor stand-alone installation problems

__ a. <WBM_PROFILE_HOME>/logs

- ConfigCEI.log
- MonitorServerResourceInstall.log
- configWBMSIB.log
- enableIdentityAssertion.log
- InstallActionManager.log
- InstallDMSService.log (non derby database environment)
- InstallDashboard.log
- InstallRestServices.log
- installVmmService.log
- installWBMISCPortlet.log
- installHumanTask.log
- InstallABXDashboard.log
- wsadmin.traceout

IBM WEBSHERE BUSINESS MONITOR 6.1 – LAB EXERCISE

c) Useful files for debugging Monitor Server runtime problems

__ a. <WBM_PROFILE_HOME>/logs/server1

- SystemOut.log
- SystemErr.log

Troubleshooting the Portlet-based dashboard installation (Machine 2)

a) Useful files for debugging initial installation problems:

__ a. Location : C:\Documents and Settings\Administrator\Local Settings\Temp\1\niflogs.wbm

(%TEMP% directory of the Administrator user)

__ b. Location : <PORTAL_HOME>\logs\wbm\install

- log.txt
- trace.txt
- wbm_<TIME STAMP>_install_out.log
- wbm_<TIME STAMP>_install_trace.log

b) Useful files for portal dashboard installation problems:

__ a. <WP_PROFILE_HOME>\logs

- wsadmin.traceout
- installPortalDashboardRestProxy.log
- installHumanTask.log
- installABXPortalDashboard.log

c) Useful files for Portal Server installation and runtime problems:

__ a. <PORTAL_HOME>\log

- SystemOut.log
- SystemErr.log