



IBM Software Group

WebSphere® Business Monitor V6.0.2

Monitor model editor – Overview



@business on demand.

© 2007 IBM Corporation
Updated February 6, 2007

This presentation provides an overview of the Monitor model editor and how to use it to create different types of business measures.

Section

Monitor model editor overview



This section provides an overview of the Monitor model editor.

What is the Monitor model editor?

- Editor for the Monitor model
 - ▶ plug-in to WebSphere Integration Developer
- Used to define a Monitor model for monitoring of events sourced from applications or processes
- Monitor model definitions are then used by WebSphere Business Monitor V6.0.2
 - ▶ Displays measures in numerous ways – reports, scorecards, gauges, graphs, multi-dimensional analysis

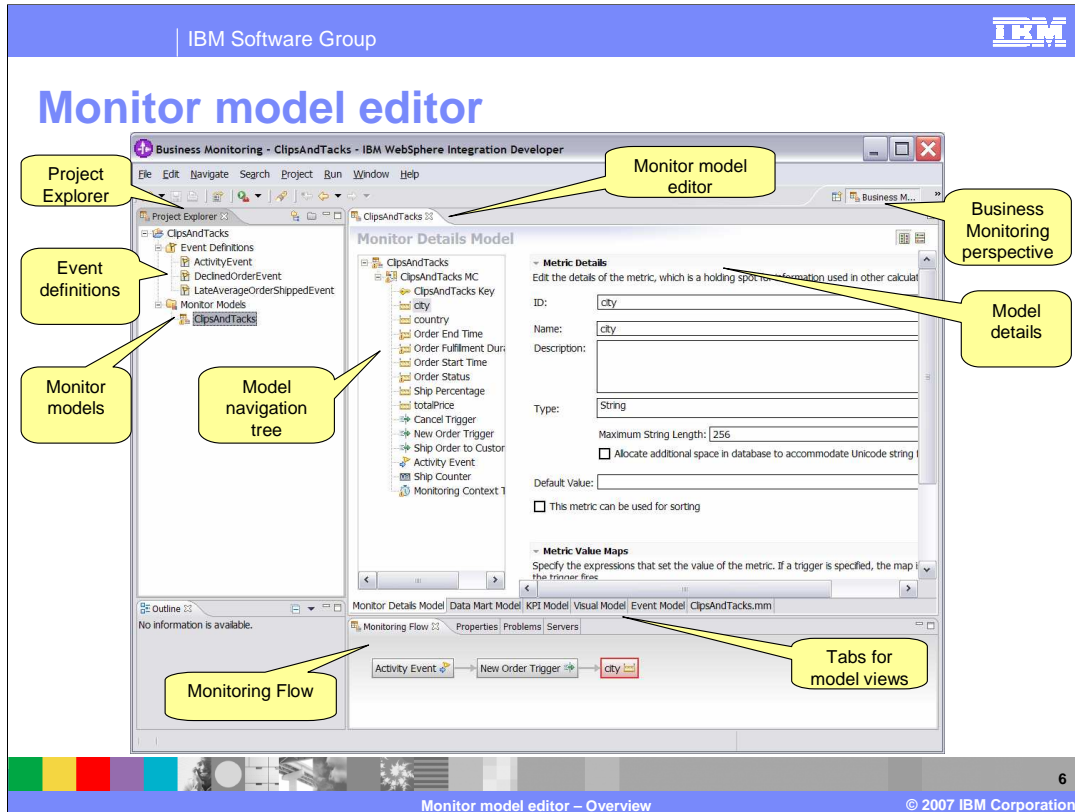


The Monitor model editor is an editor that you use to create monitor models. It is provided as a plug-in to WebSphere Integration Developer. You use the Monitor model editor to create monitor models which are used by Monitor to track and display business measures in various portlets on dashboards that run on the Dashboard Server. The Monitor model can be based on BPEL processes or any other event based application.

What does it look like?

- Business Monitoring perspective
- Project Explorer
- Monitor model editor, consisting of:
 - ▶ Monitor details model tab
 - ▶ Data mart model tab
 - ▶ KPI model tab
 - ▶ Visual model tab
 - ▶ Event model
 - ▶ XML-based text editor tab
- Monitoring flow view
- Other Eclipse views
 - ▶ Problems view
 - ▶ Search view
 - ▶ Servers view

The Monitor model editor contains a Business Monitoring perspective where you will do most of your work. The project explorer view shows a hierarchical list of the monitor elements that you create. The Monitor model editor itself contains tabs for each of the five models: Monitor details model, data mart model, KPI model, visual model and event model. Also there is a tab for the XML editor that is used for editing of the Monitor xml file. The Monitoring flow view shows relationships between elements in the model. And there are other generic Eclipse views that are available such as the problems view, search view and servers view.



Here is the Monitor model editor, shown in WebSphere Integration Developer in the Business Monitoring perspective. The project explorer is in the upper left and it shows the event definitions and monitor models in the project. On the upper right is the Monitor model editor itself, which contains a navigation tree that displays the metrics in the model, and at the bottom of that view are tabs for the other model views. At the bottom of the screen is the Monitoring Flow view.

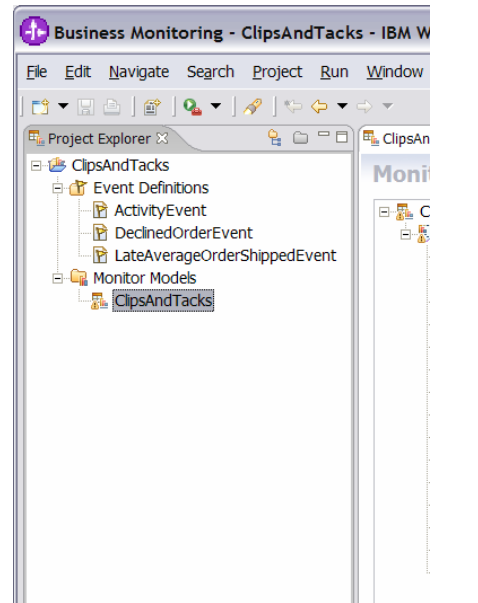
Section

Using the Monitor model editor

This section covers how to use the Monitor model editor.

Project explorer

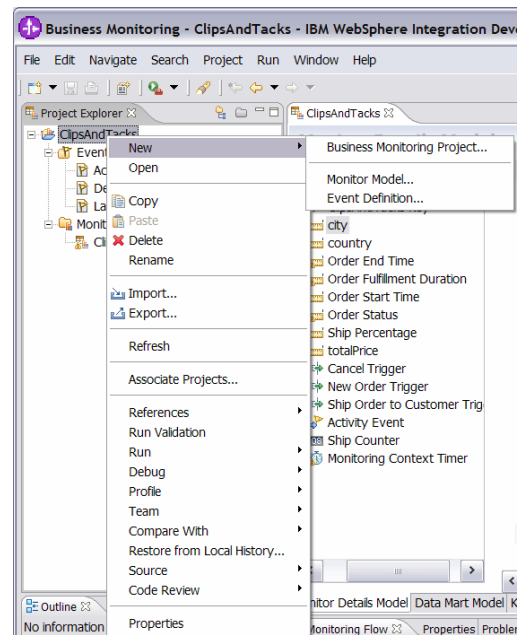
- Files with a .cbe extension are visualized as event definitions
- Files with an .mm extension are visualized as monitor models



In the project explorer view you will see a list of any event definition files in the project, which are those files with a .cbe extension. These are used for defining inbound and outbound events in the model. Also you will see a list of Monitor models which are the files with a .mm extension. These are XML files that contain the metrics that you want to track in your Monitor models.

Project explorer

- Wizards to
 - ▶ Create business monitoring project
 - ▶ Create monitor model
 - ▶ Create event definition
- Associate Projects
- References
- Double click event definition or monitor model to open editors




In the project explorer, there are wizards available to help you create business monitoring projects, monitor models and event definitions.


You can use Associate Projects to associate event definitions in other projects with the current project.

You can use References to search for references to the selected object in the project or workspace.

To open the editors on an object, just double click on an event definition listed in the project explorer or double click on a monitor model in the list.

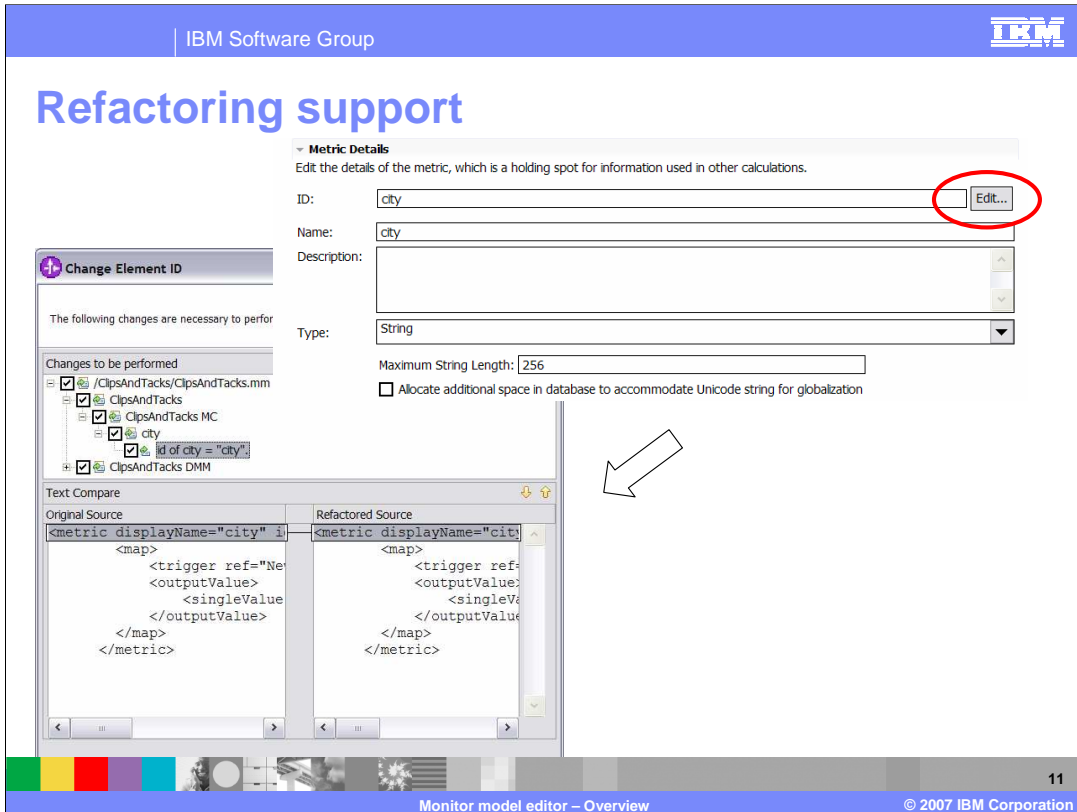
Project explorer – project types

- Monitor modeling project 
 - ▶ capable of containing both monitor models and event definitions

- Monitor support project 
 - ▶ capable of containing only event definitions

There are two types of projects in the project explorer, Monitor modeling project and Monitor support project. The Monitor modeling project can contain monitor models and event definitions. Support projects can only contain event definitions.

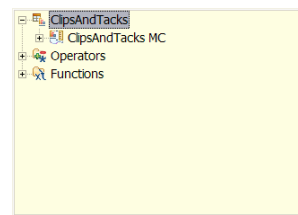
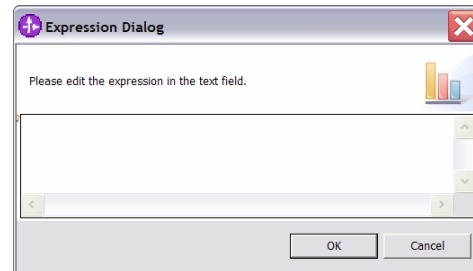
Monitor Support projects are most commonly seen after generating a monitor model from a WebSphere Integration Developer artifact such as a BPEL process. Because the event definitions for the BPEL process are generated within the module project, the monitor model must be able to access those event definitions. However, it is not desirable for the Monitor model editor user to be able to create Monitor Models within the module, so the Monitor Support nature is associated with the module project. This allows the event definitions within the module to be visualized inside Project Explorer, but does not permit you to create new monitor models within the module project.



A Refactoring wizard is provided to change the identifier of an element in the model. The refactoring wizard provides a preview of all the locations in the XML where the updated ID would need to be applied, before you accept the change.

Expressions

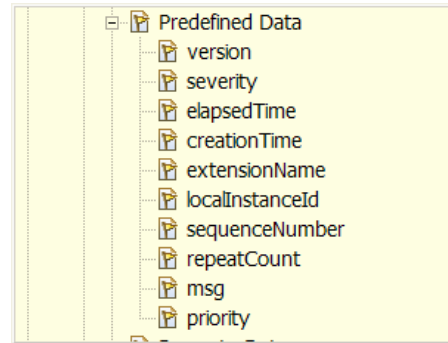
- Expressions used for
 - ▶ Metric value maps
 - ▶ Default values
 - ▶ Key value maps
 - ▶ Trigger conditions
 - ▶ Inbound event filters, correlation
 - ▶ Outbound event attributes, filters
- Ctrl-space for content assist
- Measures identified as
 - ▶ `measure_ID`
- Event attribute identified
 - ▶ `myEvent_ID/extendedData/myField`
- Errors show in Problems view



Expressions are used in various places in the Monitor model editor to identify content for maps, conditions and filters. On the upper right you see the Expression dialog. You can type Ctrl-space for content assist. On the lower right you see the content assist. The context of the expression determines the elements that are valid and selectable in the expression. You can also type the expression in the dialog yourself. Note that business measures are identified by their unique ID and not the display name. Event attributes are identified by their full path expression. When you save the project after entering an expression, validation is performed and errors will show in the Problems view.

Event definitions

- Predefined data is inherited from the parent event
- This data can be used in the model



Note that the predefined data is automatically inherited from the parent event structure. On the right you see a list of these data elements, and any of these can be used in your monitor model.

Trademarks, copyrights, and disclaimers

The following terms are trademarks or registered trademarks of International Business Machines Corporation in the United States, other countries, or both:

IBM WebSphere

Product data has been reviewed for accuracy as of the date of initial publication. Product data is subject to change without notice. This document could include technical inaccuracies or typographical errors. IBM may make improvements or changes in the products or programs described herein at any time without notice. Any statements regarding IBM's future direction and intent are subject to change or withdrawal without notice, and represent goals and objectives only. References in this document to IBM products, programs, or services does not imply that IBM intends to make such products, programs or services available in all countries in which IBM operates or does business. Any reference to an IBM Program Product in this document is not intended to state or imply that only that program product may be used. Any functionally equivalent program, that does not infringe IBM's intellectual property rights, may be used instead.

Information is provided "AS IS" without warranty of any kind. THE INFORMATION PROVIDED IN THIS DOCUMENT IS DISTRIBUTED "AS IS" WITHOUT ANY WARRANTY, EITHER EXPRESS OR IMPLIED. IBM EXPRESSLY DISCLAIMS ANY WARRANTIES OF MERCHANTABILITY, FITNESS FOR A PARTICULAR PURPOSE OR NONINFRINGEMENT. IBM shall have no responsibility to update this information. IBM products are warranted, if at all, according to the terms and conditions of the agreements (for example, IBM Customer Agreement, Statement of Limited Warranty, International Program License Agreement, etc.) under which they are provided. Information concerning non-IBM products was obtained from the suppliers of those products, their published announcements or other publicly available sources. IBM has not tested those products in connection with this publication and cannot confirm the accuracy of performance, compatibility or any other claims related to non-IBM products.

IBM makes no representations or warranties, express or implied, regarding non-IBM products and services.

The provision of the information contained herein is not intended to, and does not, grant any right or license under any IBM patents or copyrights. Inquiries regarding patent or copyright licenses should be made, in writing, to:

IBM Director of Licensing
IBM Corporation
North Castle Drive
Armonk, NY 10504-1785
U.S.A.

Performance is based on measurements and projections using standard IBM benchmarks in a controlled environment. All customer examples described are presented as illustrations of how those customers have used IBM products and the results they may have achieved. The actual throughput or performance that any user will experience will vary depending upon considerations such as the amount of multiprogramming in the user's job stream, the I/O configuration, the storage configuration, and the workload processed. Therefore, no assurance can be given that an individual user will achieve throughput or performance improvements equivalent to the ratios stated here.

© Copyright International Business Machines Corporation 2007. All rights reserved.

Note to U.S. Government Users - Documentation related to restricted rights-Use, duplication or disclosure is subject to restrictions set forth in GSA ADP Schedule Contract and IBM Corp.

