

Installing Monitor Server V6.0.2 – Advanced Scenario 2

What this exercise is about	2
Lab requirements	2
What you should be able to do	2
Exercise instructions	3
Introduction	4
Part 1: Preparing the Launchpad for Monitor Server and databases	6
Part 2: Installing Monitor Server and Monitor databases.....	7
Part 3: Preparing the Launchpad for Dashboard Server	24
Part 4: Installing Dashboard server.....	26
What you did in this exercise	43
Appendix 1: Uninstalling WebSphere Business Monitor and its pre-requisites	44
Appendix 2: Hints and troubleshooting	45

What this exercise is about

The objective of this lab is to provide step by step instructions for installing WebSphere® Business Monitor V6.0.2 using installation type **Advanced** Scenario 2.

Scenario 2: The Advanced installation allows you to install on multiple machines and this particular lab is designed to do so with Monitor Server and Monitor Databases installed on one machine and the Dashboard Server on the second.

Lab requirements

List of system and software required for the student to complete the lab.

- WebSphere Business Monitor V6.0.2
- WebSphere Process Server V6.0.2
- WebSphere Application Server V6.0.2.17
- WebSphere Portal Server V5.1.0.4
- DB2® UDB V8.2.6
- DB2 Cube Views V8.2.6
- DB2 Alphablox V8.4.0

What you should be able to do

At the end of this lab you should be able to:

- Install DB2 UDB V8.2.6 and DB2 Cube Views V8.2.6 first on the Monitor Server machine
- Create MONITOR and DATAMART databases
- Install WebSphere Process Server V6.0.2 on the Monitor machine
- Install WebSphere Application Server V6.0.2.17 and WebSphere Portal Server V5.1.0.4 on the Dashboard machine
- Install WebSphere Business Monitor Server on the Monitor Server machine
- Install Dashboard Server on the Dashboard Server machine

Exercise instructions

Some instructions in this lab may be Windows® operating-system specific. If you plan on running the lab on an operating-system other than Windows, you will need to run the appropriate commands, and use appropriate files (.sh vs. .bat) for your operating system. The directory locations are specified in the lab instructions using symbolic references, as follows:

Reference Variable	Windows Location	AIX®/UNIX® Location
<MONITOR_HOME>	C:\IBM\WebSphere\Monitor	
<WPS_HOME>	C:\IBM\WebSphere\ProcServer	
<WPS_PROFILE_DIR>	<WPS_HOME>\profiles\wbmonitor	
<DB2_HOME>	C:\IBM\DB2\SQLLIB	
<WAS_HOME>	C:\IBM\WAS	
<PORTAL_HOME>	C:\IBM\PortalServer	
<ALPHABLOX_HOME>	C:\IBM\Alphablox	
<DB2_BACKUP_DIR>	<MONITOR_HOME>\dbbackup	
<DB2_TABLESPACE_DIR>	<MONITOR_HOME>\dbspace	

Windows users' note: When directory locations are passed as parameters to a Java™ program such as EJBdeploy or wsadmin, it is necessary to replace the backslashes with forward slashes to follow the Java convention.

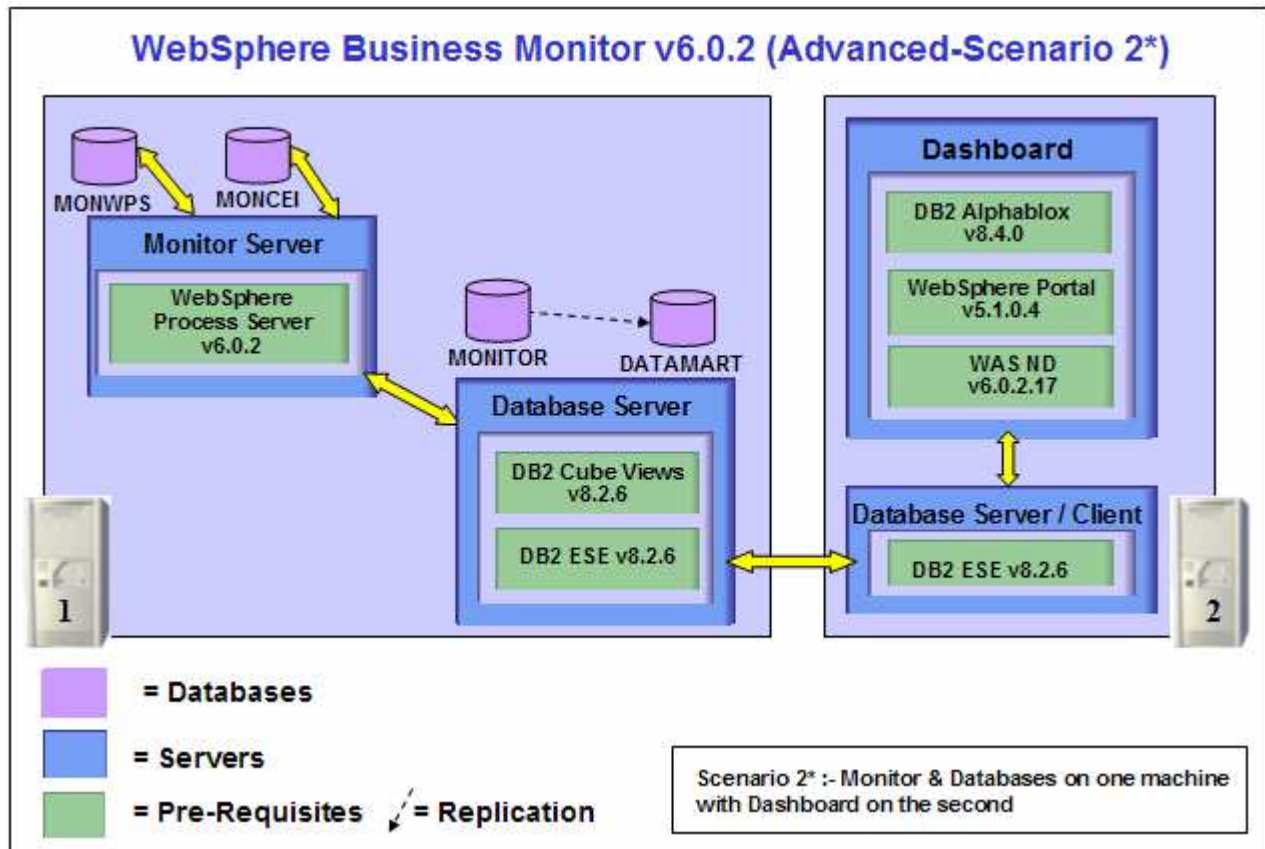
Introduction

Advanced installation allows you to customize the installation of the Monitor components on one or multiple machines and it can be used for small to large production systems.

The key part of this lab is the **Launchpad** program, which is used to install all the pre-requisites and the Monitor Server components. The improved Launchpad program makes installing the complete set of supporting software very simple. This improved Launchpad program also supports the incremental installation, leveraging the existing pre-requisite product installations.

The Monitor Server runs on top of WebSphere Process Server V6.0.2. WebSphere Process Server V6.0.2 is installed as one of the pre-requisites. The Dashboard runs on WebSphere Portal Server. The monitor databases can be configured to be either remote or local to the Monitor and Dashboard Servers.

The following diagram shows you how the advanced installation takes advantage of Monitor Server and Monitor Databases installed on one machine and the Dashboard Server Installed on the second. The WebSphere Process Server DB2 databases can be optionally created on a local or remote database server To use DB2 for remote Process Server databases, WebSphere Process Server is installed manually outside the Monitor Launchpad and the Process Server databases are manually created. However the topic of Process Server using DB2 as the remote server is not covered in this document.



IBM WEBSHERE BUSINESS MONITOR V6.0.2 – LAB EXERCISE

WebSphere Business Monitor Server V6.0.2 includes the following new installation features and improvements:

- Launchpad now supports incremental installation. The pre-requisite products can be installed manually outside of the Launchpad environment, and then Monitor can be incrementally installed “on top of” these prerequisite products
- You can select from Basic and Advanced modes depending on the stage of use (prototyping vs. production). Basic mode uses many default options, reducing complexity, while Advanced includes flexibility required in production installs
- The WebSphere Portal Server footprint size is reduced
- The number of databases has been reduced from five to two. The number of database replications is reduced from two to one. Database tables and columns now have simpler, more meaningful names
- Database Architecture is simplified to use only MONITOR and DATAMART (formerly called HISTORY) databases
- The product includes silent install capability for Monitor features such as the database, Monitor server, and the dashboard server
- The Launchpad gives you a choice to use DB2 as the Process Server Database
- Overall install process time has been cut by more than 50%

Part 1: Preparing the Launchpad for Monitor Server and databases

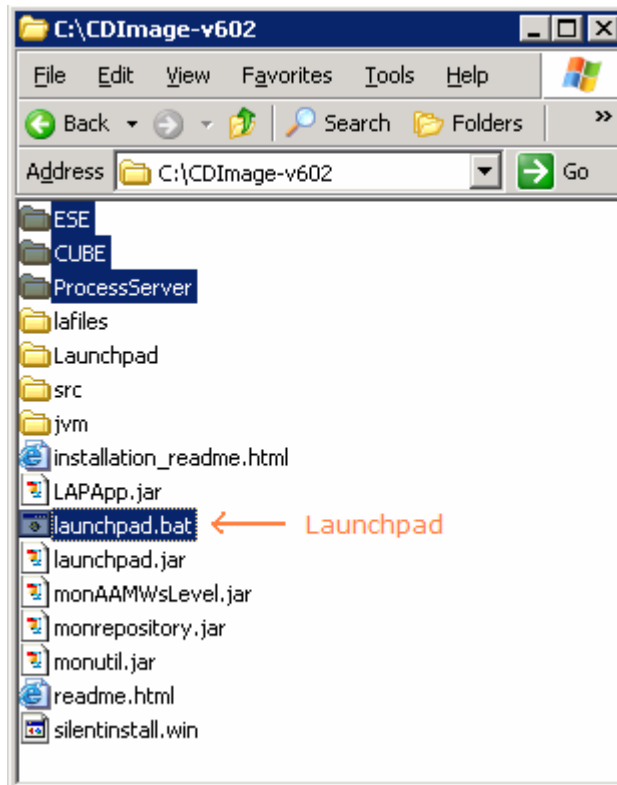
In this section of the lab, the pre-requisite software required for Monitor Server and Monitor Database installation will be obtained and extracted.

The following steps are all performed on the machine where the Monitor Server and Monitor Databases are to be installed.

- ___ 1. The following installation files are needed
 - ___ a. ESE_v826.zip (DB2 UDB ESE V8.2.6)
 - ___ b. CUBE_v826.zip (DB2 Cube Views V8.2.6)
 - ___ c. ProcessServer_v602.zip (WebSphere Process Server V6.0.2)
 - ___ d. Monitor_v602.zip (WebSphere Business Monitor V6.0.2 Driver)

Note: WinZip versions before version 10 could have problems extracting the number of files or the directory structure depth from the source archive (.zip) files. Use unzip instead, which can be downloaded from the Internet at <http://www.info-zip.org/pub/infozip/>.

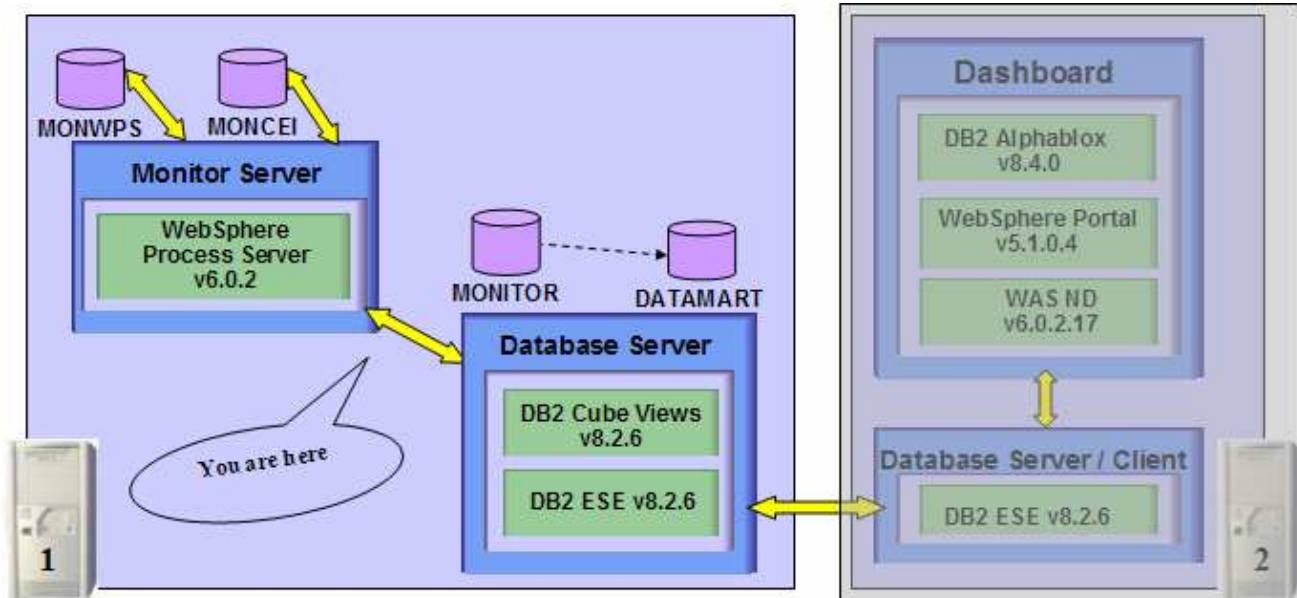
- ___ 2. Extract all of the .zip files into a directory called C:\CDImage-v602\ to create an on-disk image and confirm that the directory structure was extracted correctly; it should appear similar to the picture below



Note: If using WinZip, a right-click on the .zip files selecting “**Extract here**” from the context menu will produce the correct directory structure for the Monitor Launchpad to detect the pre-requisite software.

Part 2: Installing Monitor Server and Monitor databases

This part of the lab helps you install Monitor Server, Monitor Databases and their supporting software (pre-requisites). The Launchpad program can install the pre-requisite software; however, the Launchpad program also detects the prerequisite software if they were pre-installed.



The Launchpad program expects the following pre-requisites to be met for the WebSphere Application Server installation:

Create WebSphere Process Server user

- The WebSphere Process Server user must be an Operating System user with administrative privileges
- The existing **Administrator** user ID can be used as a WebSphere Process Server user
- If you plan to use a user other than Administrator, create a user (for example **wpsadmin**) and ensure the user is the member of **Administrators** group.

The following pre-requisite is not mandatory but if you want to:

Note: The Launchpad will create the DB2 user and groups if they do not exist during the DB2 installation.

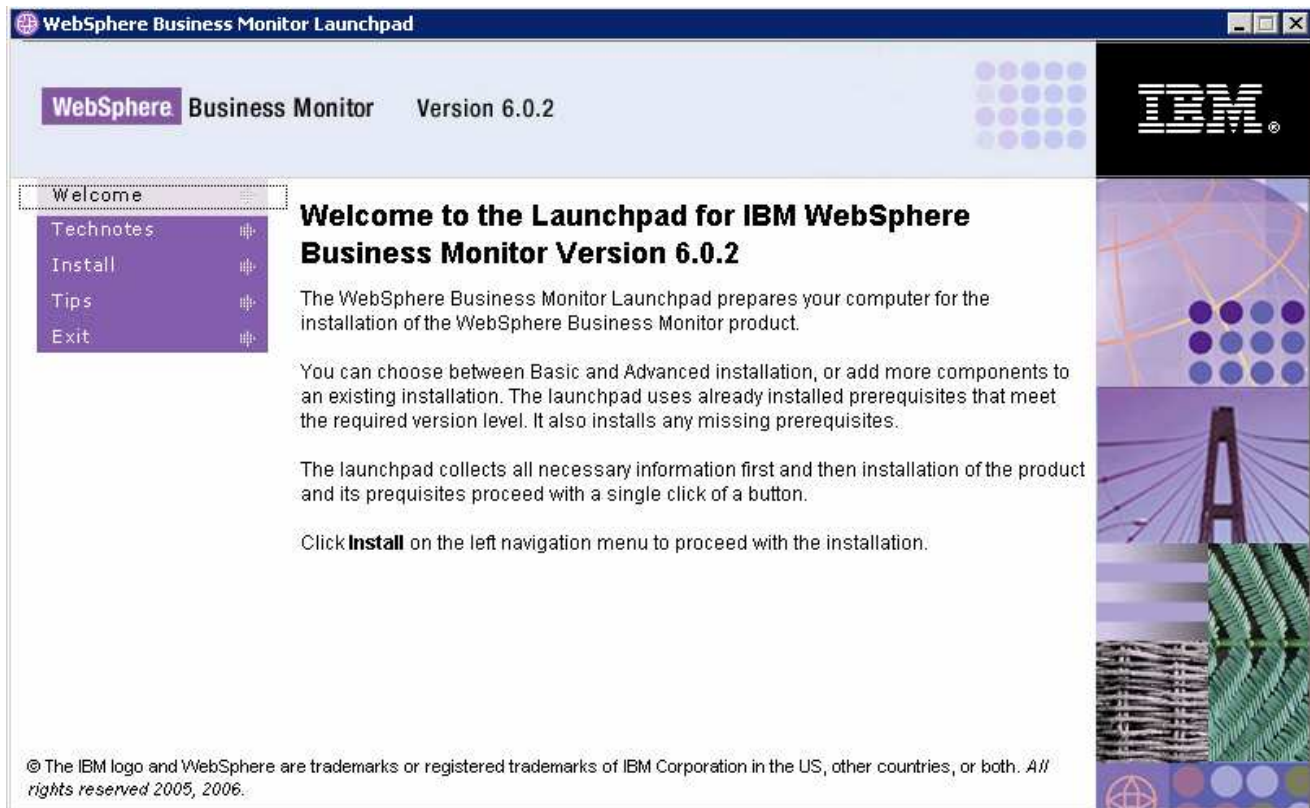
Create DB2 Administrator user, DB2 Administrator groups

- The DB2 Administrator user must be an Operating System user with administrative privileges
- The DB2 Administrator user must be less than or equal to 8 characters
- Create two groups DB2ADMINS and DB2USERS
- Create a user (for example **db2admin**) and ensure the user is the member of **Administrators** and **DB2ADMINS** groups

Note: WebSphere Business Monitor V6.0.2 Launchpad provides the capability to install the pre-requisite such as WebSphere Process Server V6.0.2 and select an option to use DB2 for Process Server databases. By selecting this option, the Process Server databases can only be created on the local Database Server. However, the Launchpad program doesn't provide the capability to create the databases used by the Process Server (the databases named EVENT and WPRCSDB) to be remote databases. The WebSphere Process Server and the EVENT databases created locally using the Launchpad are by default named as MONWPS and MONCEI. If you are planning to use Remote DB2 server for WebSphere Process Server databases, the instructions for this are out of the scope of this document.

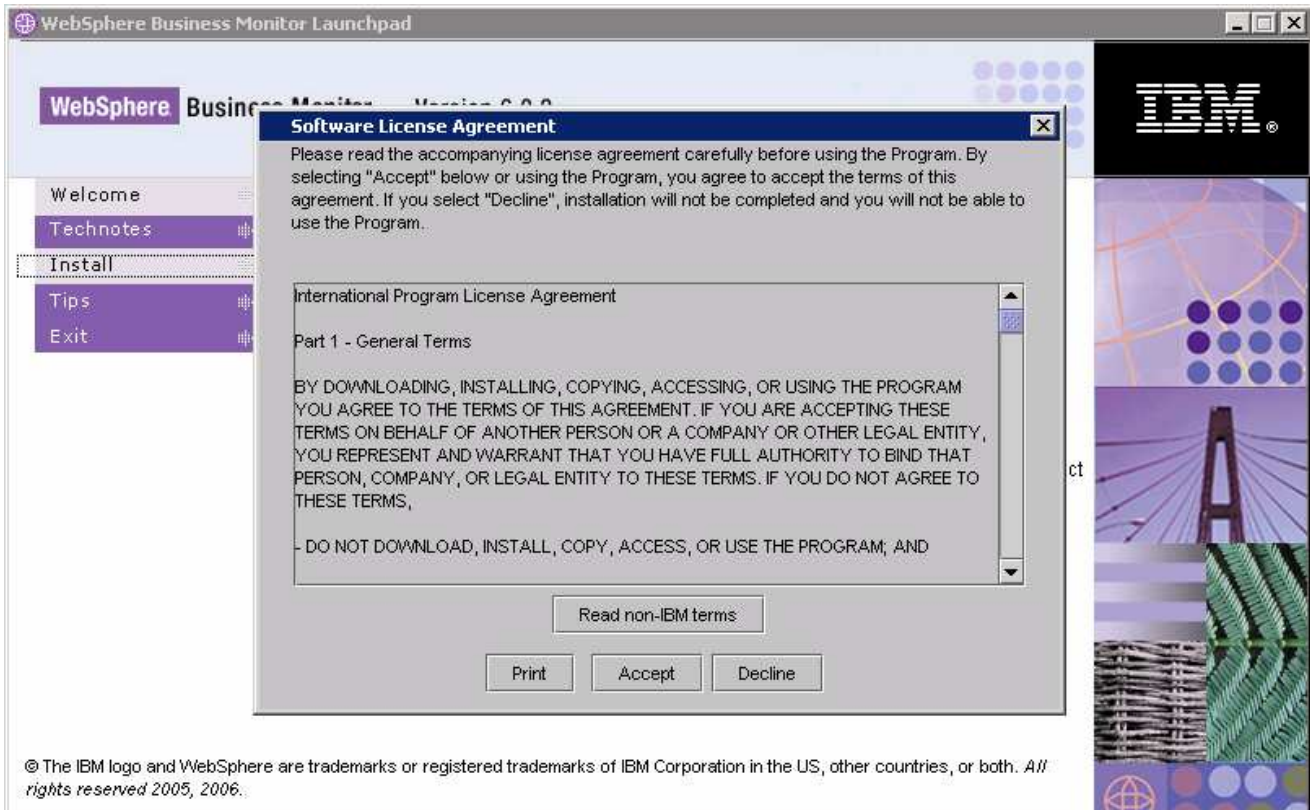
Follow the instruction below to complete the installation of Monitor Server and Monitor Databases

1. From the directory where all the pre-requisites and the Monitor driver are extracted (Ex:- **C:\CDImage-v602**), double click on the **launchpad.bat** to run the Launchpad



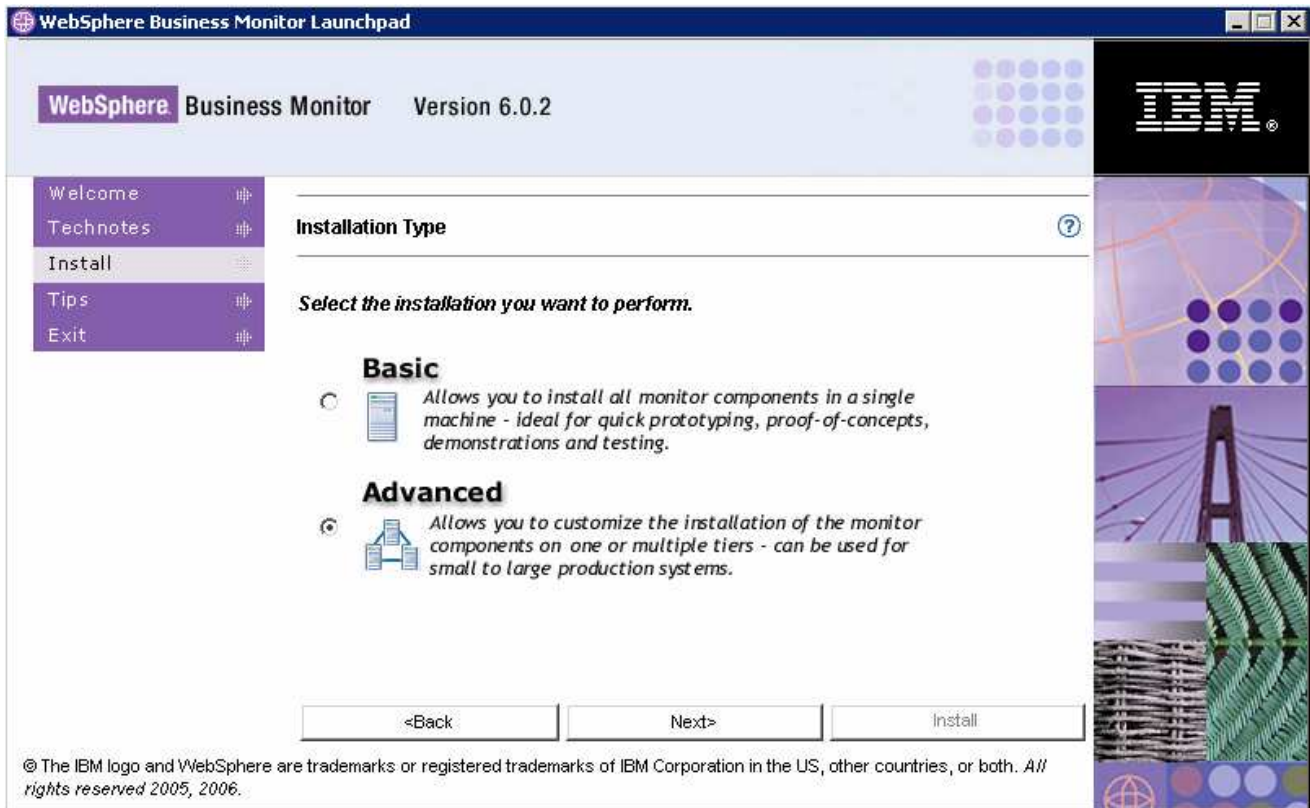
2. From the welcome screen click on **Install** link
3. Read the license agreement and accept the agreement

IBM WEBSHERE BUSINESS MONITOR V6.0.2 – LAB EXERCISE



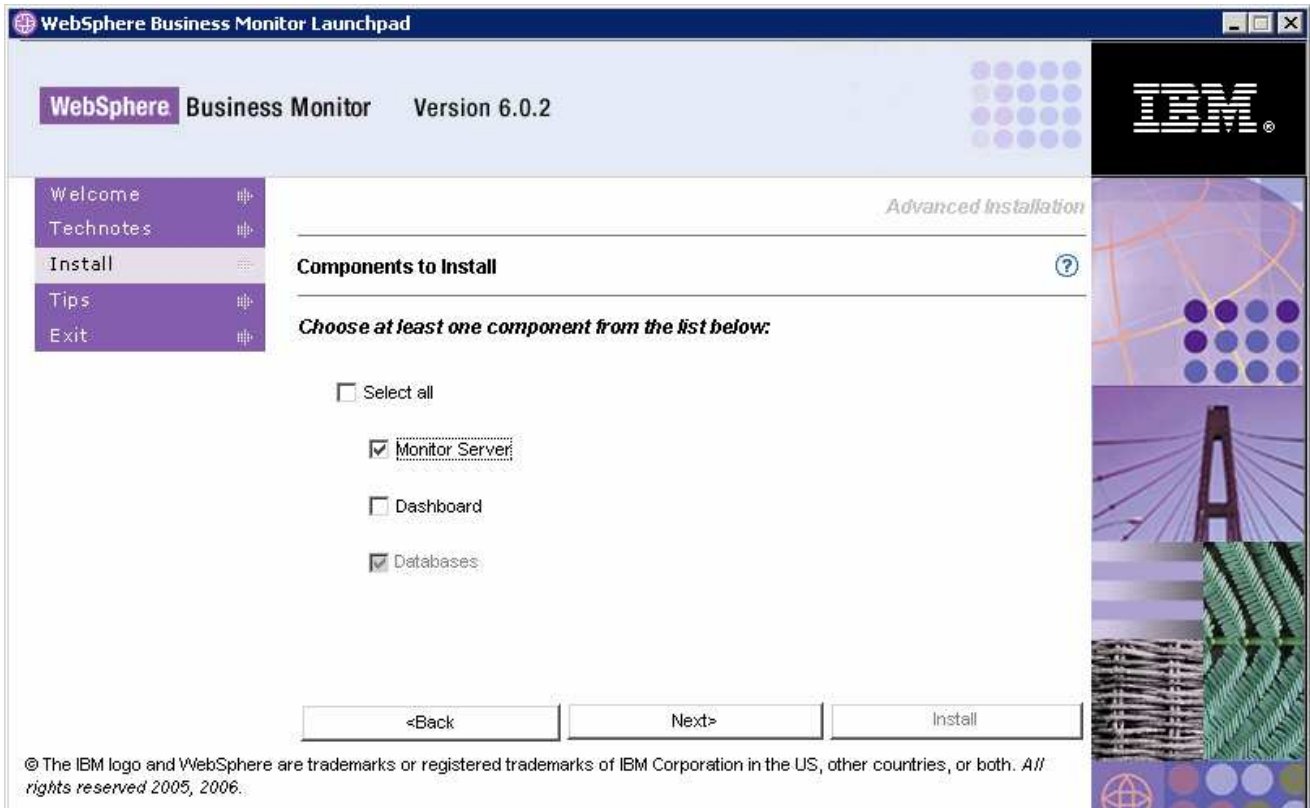
- ___ 4. Click the **Accept** button to continue
- ___ 5. In the following screen, select the **Installation Type** as **Advanced**

IBM WEBSHERE BUSINESS MONITOR V6.0.2 – LAB EXERCISE



- ___ 6. Click **Next**
- ___ 7. In the following **Components to Install** screen, ensure that only the check boxes next to **Monitor Server** and **Databases** (selected and not available) are selected

IBM WEBSHERE BUSINESS MONITOR V6.0.2 – LAB EXERCISE

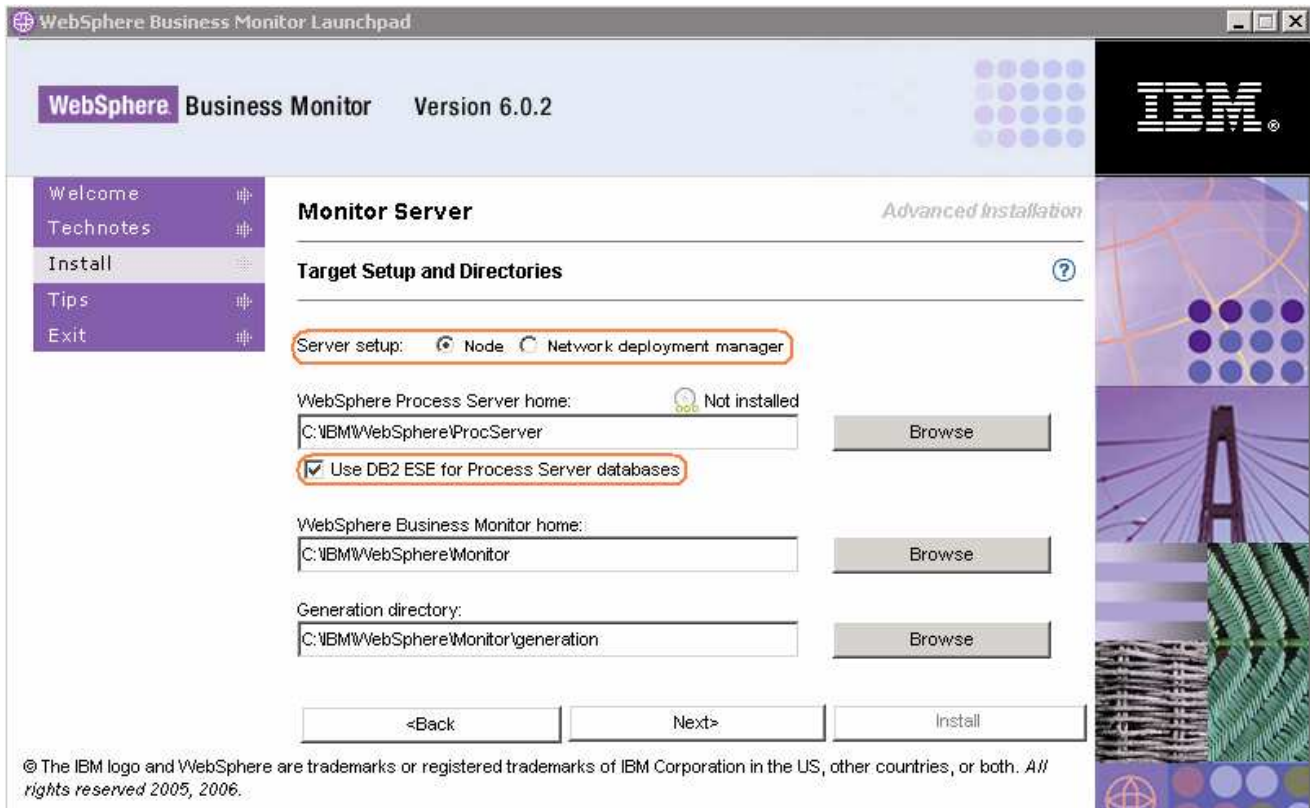


- ___ 8. Click **Next**
- ___ 9. Verify the following on the next screen
 - ___ a. Server setup : **Node**
 - ___ b. WebSphere Process Server home : **C:\IBM\WebSphere\ProcServer**
 - ___ c. Use DB2 for Process Server DBs : **Select** (For local WebSphere Process Server Databases)
 - ___ d. WebSphere Business Monitor home : **C:\IBM\WebSphere\Monitor** (defaulted and not available)
 - ___ e. Generation directory : **C:\IBM\WebSphere\Monitor\generation**

Note: On selecting “**Use DB2 ESE for Process Server databases**” the Monitor Launchpad creates the databases on a database server local to the Process Server. WebSphere Process Server uses the database names as MONWPS and MONCEI when installed using Launchpad. Unselecting “**Use DB2 ESE for Process Server databases**”, the Process Server uses Cloudscape for the WebSphere Process Server and CEI databases.

Note: - The **Network Deployment manager** option is out of the scope of this document.

IBM WEBSHERE BUSINESS MONITOR V6.0.2 – LAB EXERCISE



10. Click **Next**

11. In the following **WebSphere Process Server Information** screen:

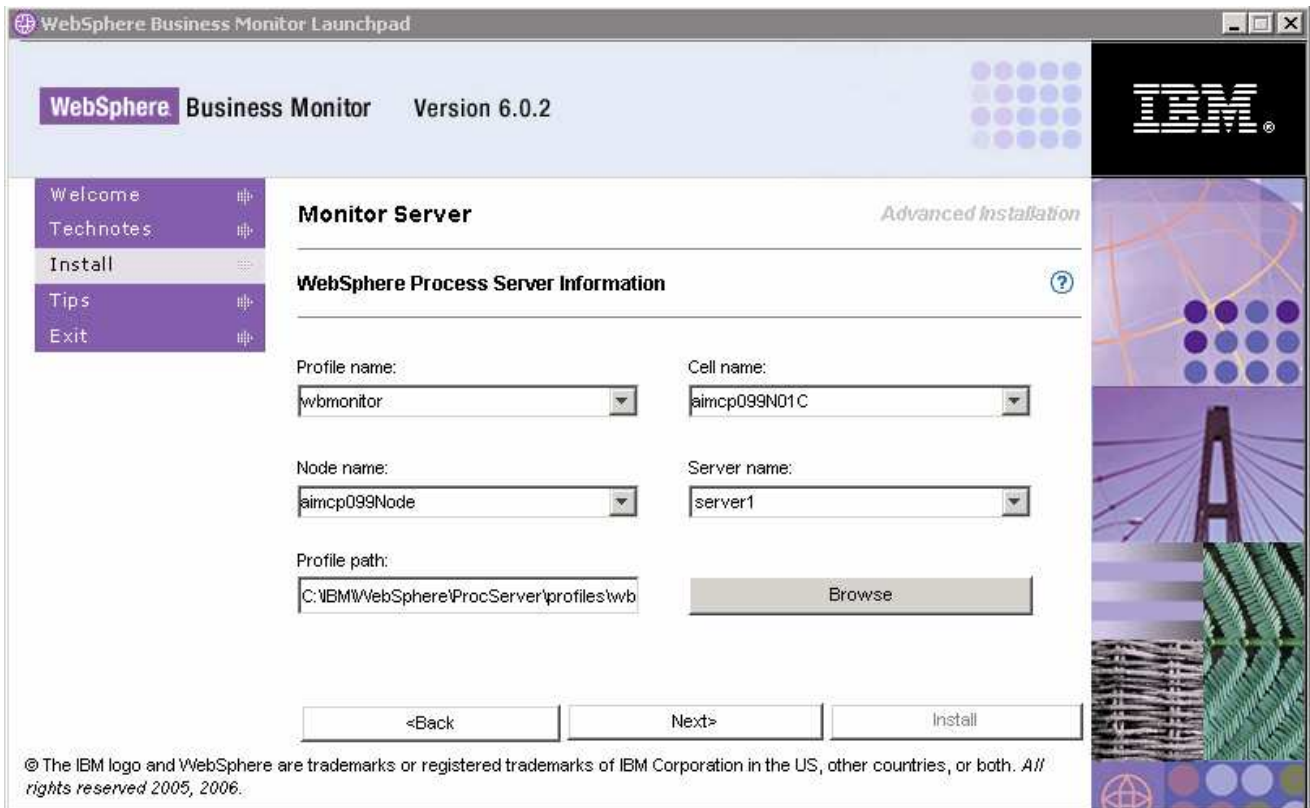
a) Review the **Profile name**, **Cell Name**, **Node Name** and **Server Name**

- Profile name : **wbmonitor**
- Cell name : **hostnameN01C** (generated based on the system short host name)
- Node name : **hostnameNode** (generated based on the system short host name)
- Server name : **server1**

b) Profile path : **C:\IBM\WebSphere\ProcServer\profiles\wbmonitor**

Note: If you edit the Node name, ensure that it is unique to this profile

IBM WEBSHERE BUSINESS MONITOR V6.0.2 – LAB EXERCISE

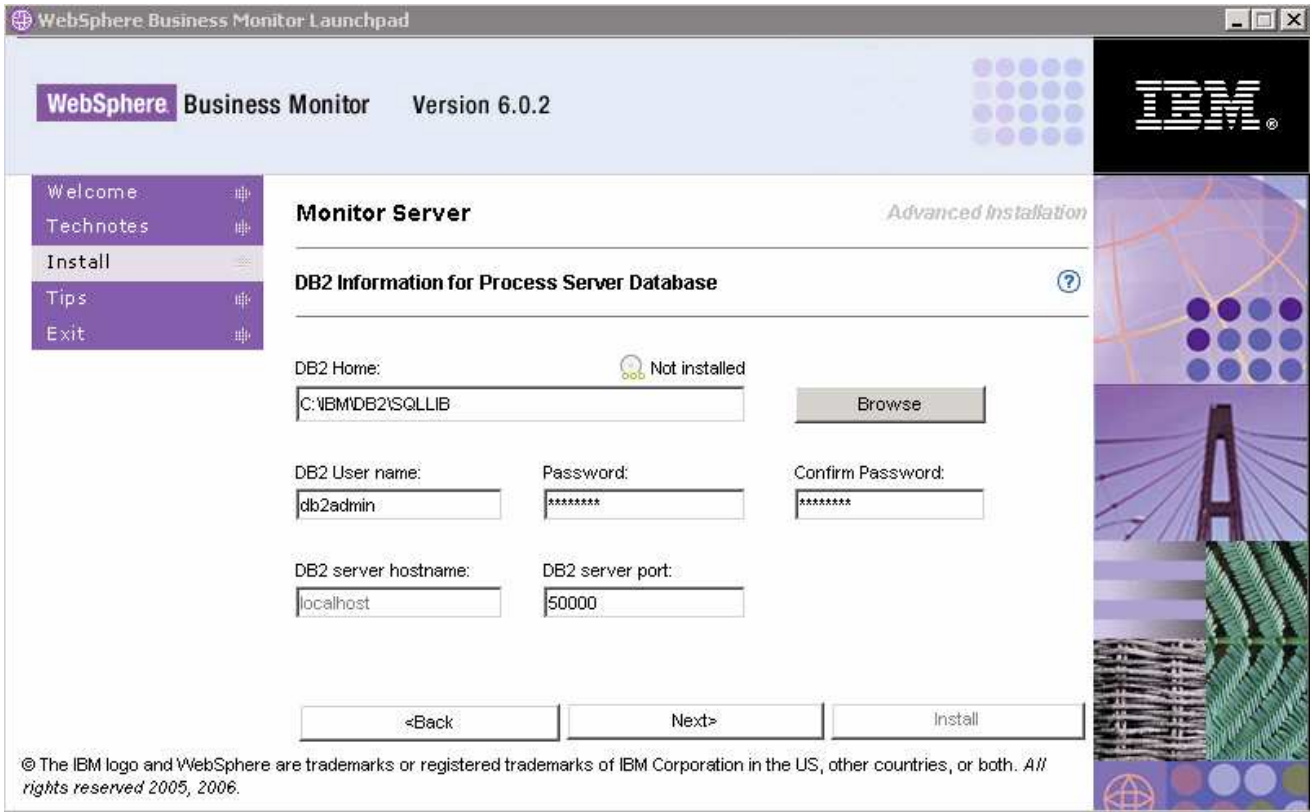


___ 12. Click **Next**

___ 13. In the following **DB2 Information for Process Server Database** screen :

- DB2 Home : **C:\IBM\DB2\SQLLIB**
- DB2 user Name : **db2admin**
- Password : **xxxxxxxx**
- Confirm Password : **xxxxxxxx**
- DB2 server hostname : **localhost** (defaulted and not available)
- DB2 server port : **50000**

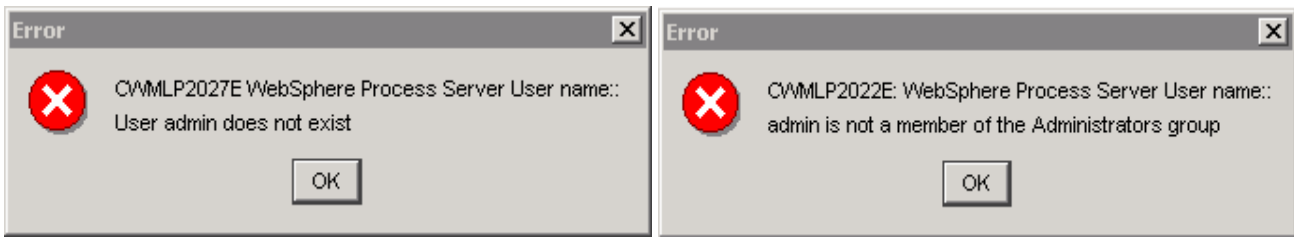
IBM WEBSHERE BUSINESS MONITOR V6.0.2 – LAB EXERCISE



14. In the following screen, provide the **WebSphere process Server User name** and **Password**

- WebSphere Process Server user name : **Administrator**
- Password : **xxxxxxxxxx**

Note: The **WebSphere Process Server User** is an Operating System specific user and it is mandatory that the user be pre-existing and be part of the **Administrators** group



IBM WEBSHERE BUSINESS MONITOR V6.0.2 – LAB EXERCISE



- ___ 15. Click **Next**
- ___ 16. In the following **Database setup** screen, for the **MONITOR Database setup**:
 - ___ a. Select the **MONITOR** tab
 - ___ b. Select the check box next to **Configure**
 - ___ c. Select the radio button next to **Type 2** for the **JDBC Driver Type**

Note: There are two types of **JDBC Driver Types** that can be chosen: **Type 2** and **Type 4**.

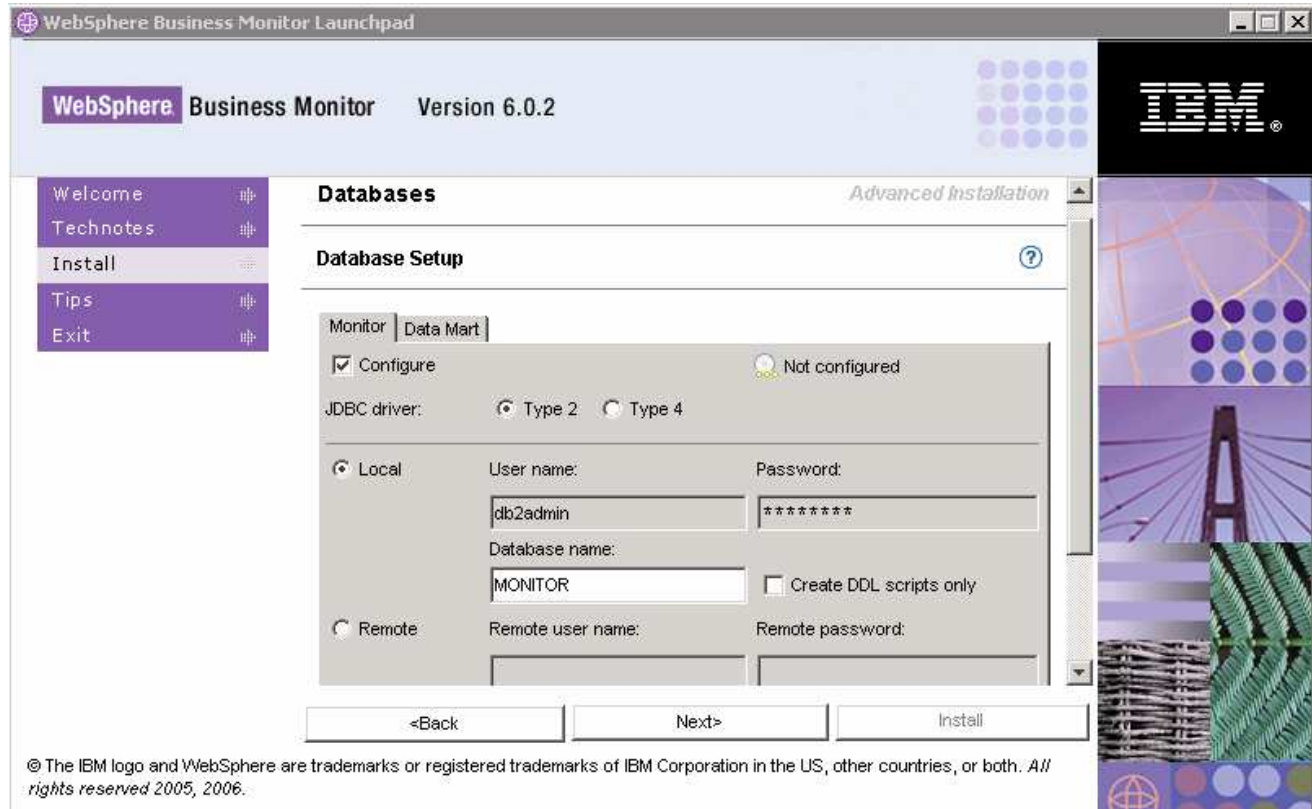
For Type 2, the native-API/partly JAVA driver communicates directly with the database server; therefore requiring some binary code on the client machine.

For Type 4, the native-protocol/all JAVA driver converts JDBC calls into the vendor-specific database management system (DBMS) protocol so that the client applications can communicate directly with the database server. Type 4 drivers are completely implemented in JAVA to achieve platform independence and eliminate deployment administration issues.

- ___ d. Select the radio button next to **Local**
 - 1) Enter the following information:
 - a) User Name : **db2admin** (defaulted and not available)
 - b) Password : **xxxxxxx** (defaulted and not available)
 - c) Database Name : **MONITOR**

Note: The **DB2 User** used for Monitor Databases is same as the one used for Process Server Databases, so that is the reason why the DB2 user name and password are defaulted and not available.

Note: When selecting the check box next to '**Create DDL Scripts only**', the MONITOR database scripts are generated and can be run manually to create the MONITOR database.



___ 17. In the current **Database setup** screen, for the **DATAMART Database setup**:

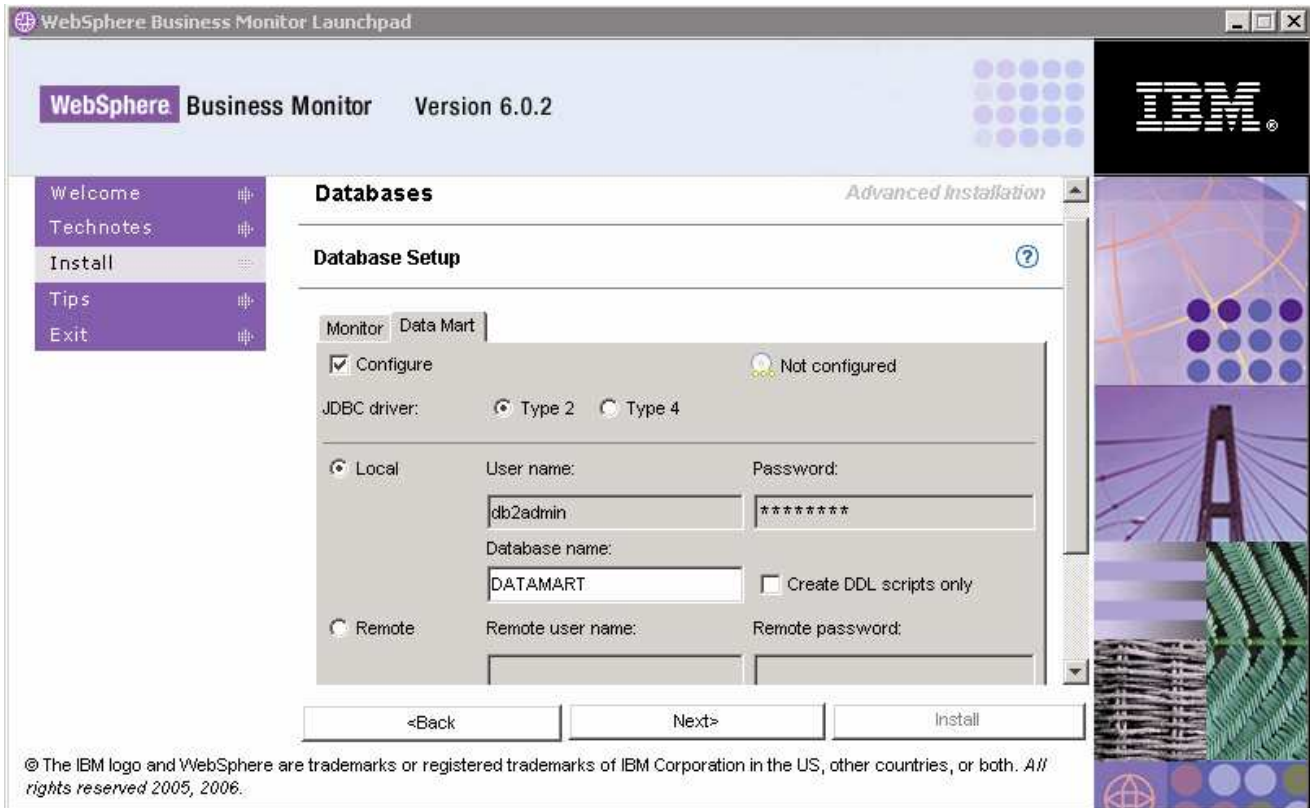
- ___ a. Select the **DATAMART** tab
- ___ b. Select the check box next to **Configure**
- ___ c. Select the radio button next to **Type 2** for the **JDBC Driver Type**
- ___ d. Select the radio button next to **Local**

1) Enter the following information:

- a) User Name : **db2admin** (defaulted and not available)
- b) Password : **xxxxxxx** (defaulted and not available)
- c) Database Name : **DATAMART**

Note: When selecting the check box next to '**Create DDL Scripts only**', the DATAMART database scripts are generated and can be run manually to create the DATAMART database.

IBM WEBSHERE BUSINESS MONITOR V6.0.2 – LAB EXERCISE



____ 18. Click **Next**

____ 19. Verify the following on the next screen

- DB2 Home : **C:\IBM\DB2\SQLLIB**
- Install DB2 Enterprise Server Edition : **Selected** (defaulted and not available)
- Install DB2 Cube Views : **Selected** (defaulted and not available)
- DB2 backup directory : **C:\IBM\WebSphere\Monitor\dbbackup**
- DB2 table space directory : **C:\IBM\WebSphere\Monitor\dbspace**

Note: The **Install DB2 ESE & DB2 Cube Views** options are selected by default and not available since they are mandatory.

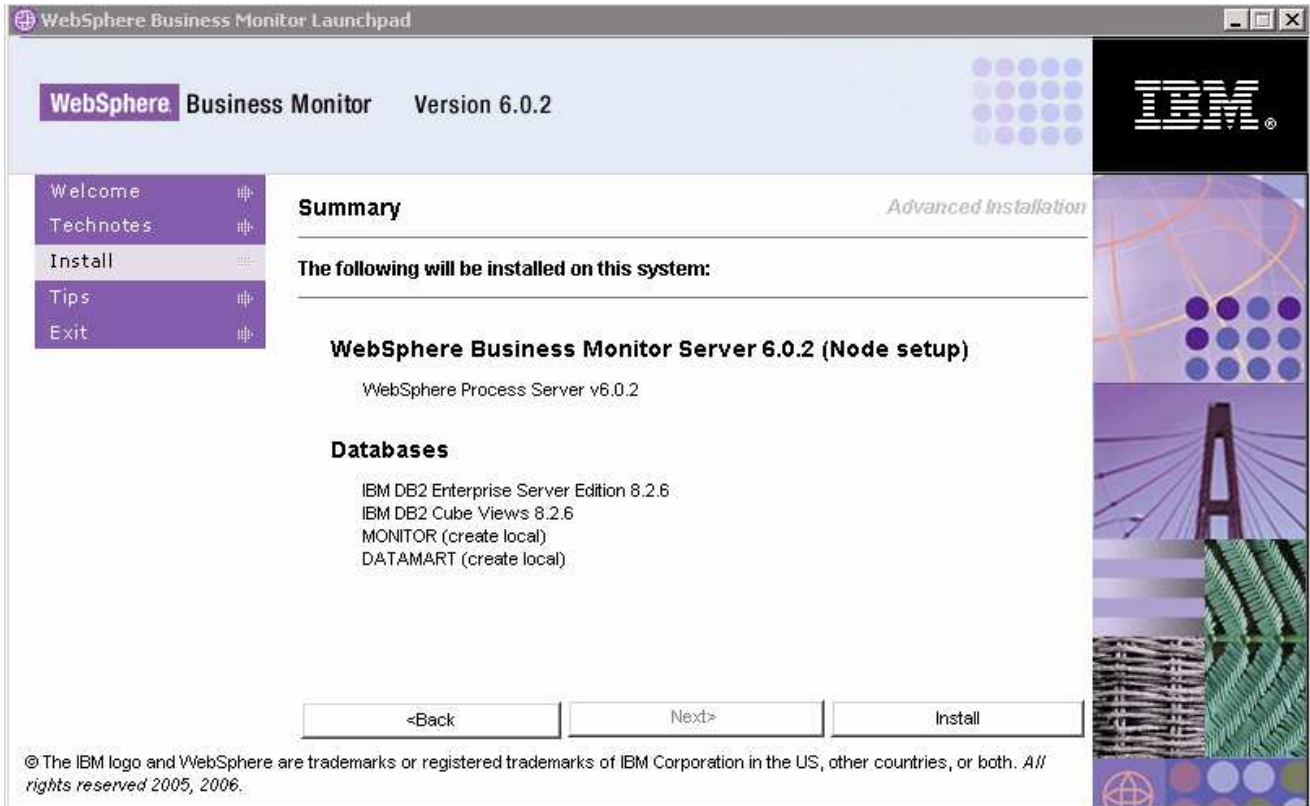
IBM WEBSHERE BUSINESS MONITOR V6.0.2 – LAB EXERCISE



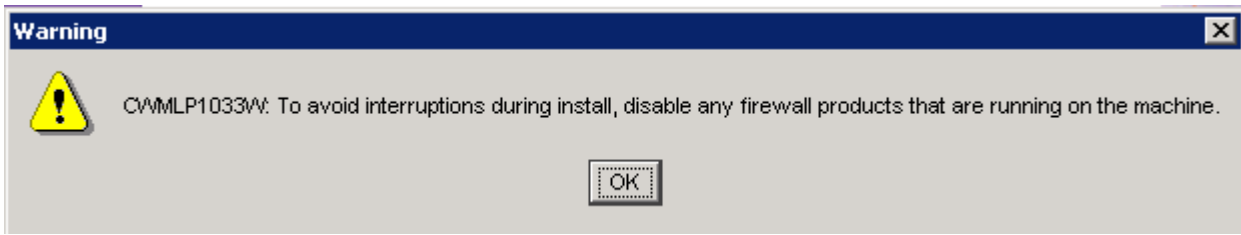
____ 20. Accept the defaults and click **Next**

____ 21. Review the installation Summary and click **Install**

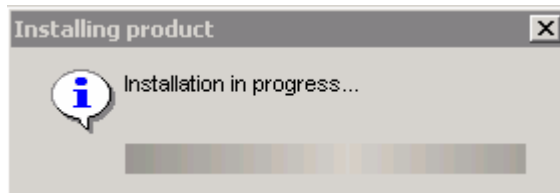
IBM WEBSHERE BUSINESS MONITOR V6.0.2 – LAB EXERCISE



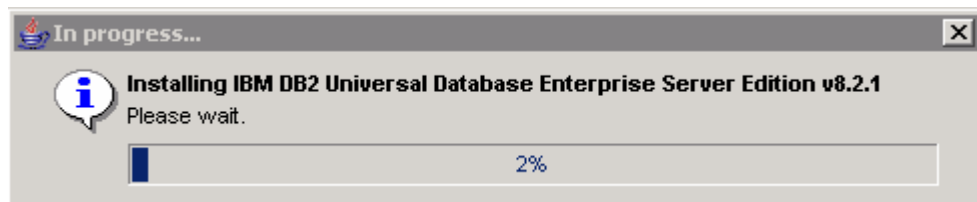
Note: Follow the Warning message as shown below:



___ 22. The installation progresses with out interruption in the following **sequence** :

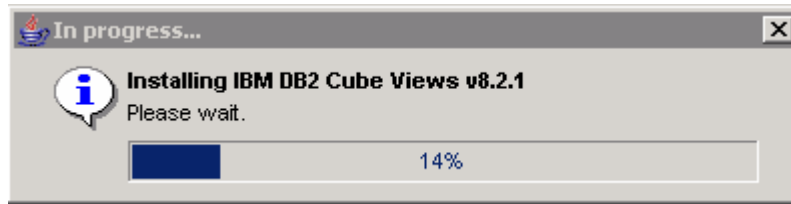


___ a. DB2 Installation Progress. This takes about 4 minutes to install

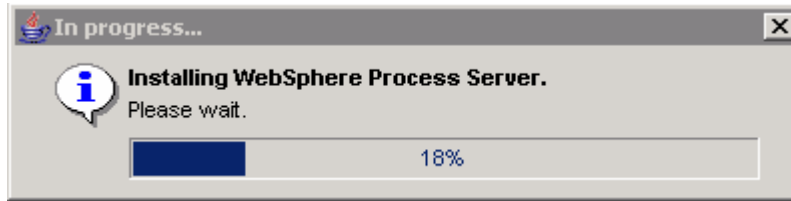


IBM WEBSHERE BUSINESS MONITOR V6.0.2 – LAB EXERCISE

___ b. DB2 Cube Views Installation Progress. This takes about 2 minutes to install



___ c. WebSphere Process Server Installation Progress. This takes around 40 minutes to complete



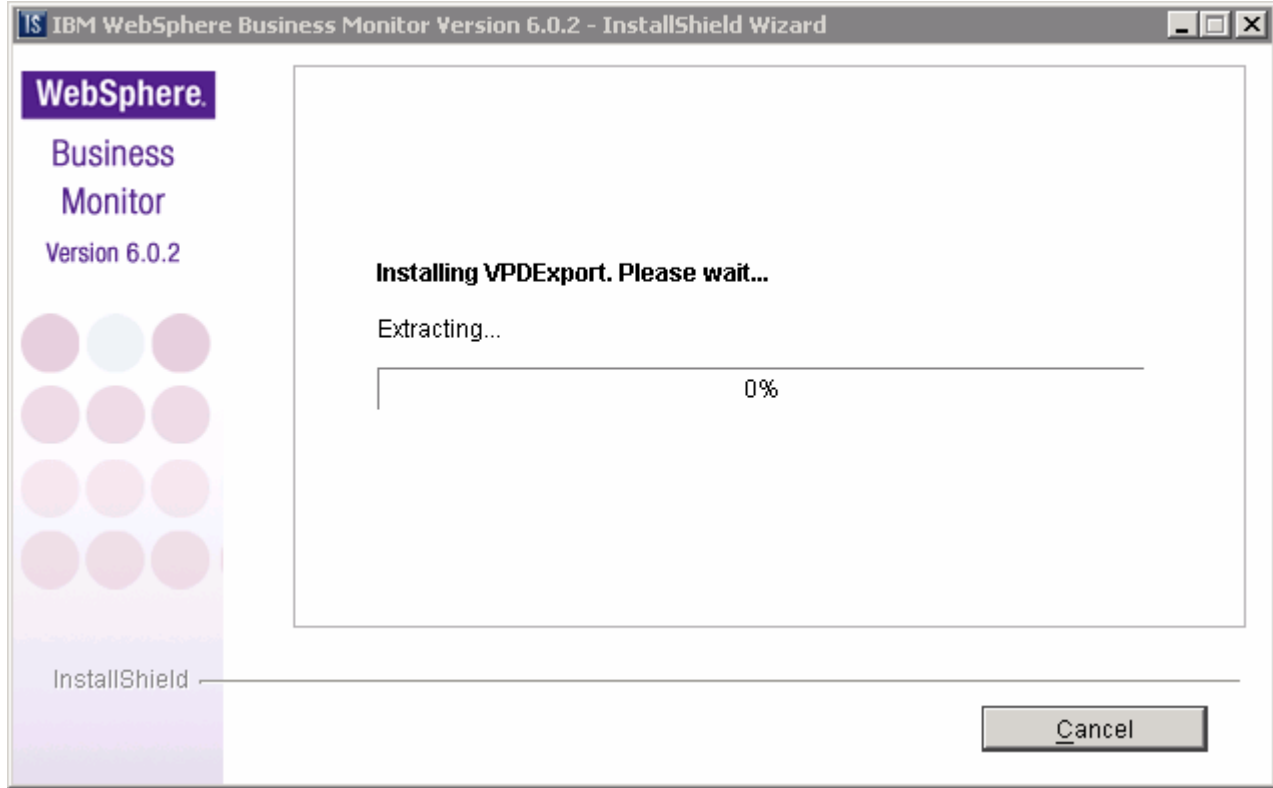
Note: Once the Process Server installation is complete, the installation wizard is automatically launched to install the monitor server components: the VpdExport and the Monitor databases MONITOR and DATAMART. The Monitor un-installer is also created at this time.

___ d. The installation progresses starting with the VpdExport component which holds the installation information of the monitor server components. This should take about 10-15 minutes to complete

Note: VpdExport is an InstallShield tool where the Monitor Install and Uninstall is recorded and maintained as a database. VpdExport is installed when the first Monitor feature is installed and uninstalled when the last Monitor feature is uninstalled.

VpdExport is located at C:\Program Files\Common Files\InstallShield\Universal\Common\Gen2_vpddb

IBM WEBSHERE BUSINESS MONITOR V6.0.2 – LAB EXERCISE



__ e. MONITOR Database creation. This takes about 4 minutes to complete



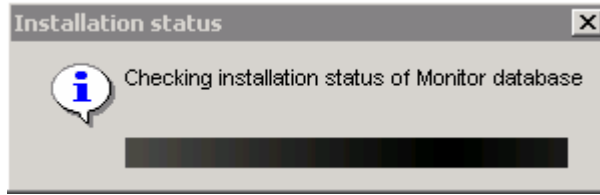
__ f. DATAMART Database creation. This takes about 3 minutes to complete



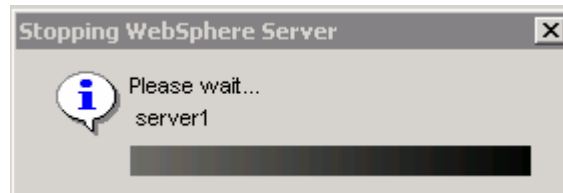
__ g. Once the database creation is complete, the installer checks the status of the Monitor databases as follows:



IBM WEBSHERE BUSINESS MONITOR V6.0.2 – LAB EXERCISE

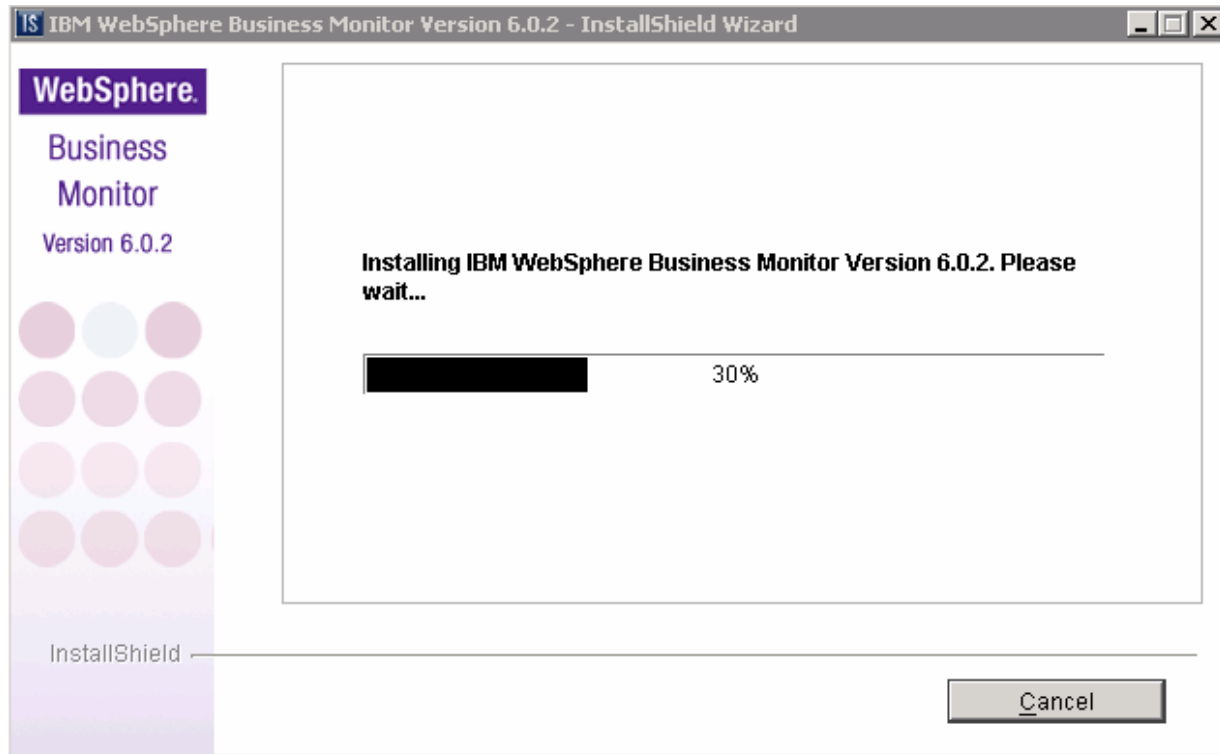


__ h. When the Database status check is complete, the installer stops the Process Server to prepare for the Monitor Server installation and is launched again



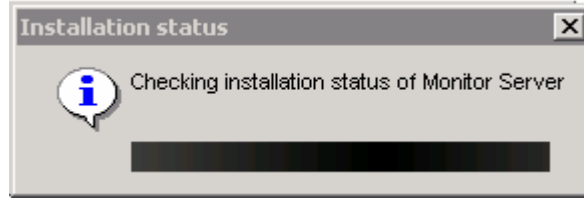
Note: Once the Monitor Database creation is complete, the installation wizard is automatically launched to install the monitor server components: the Monitor Server, Runtime and the Monitor Administrator Console components.

__ i. The Monitor Server installation progresses. This should take about 20 minutes to complete

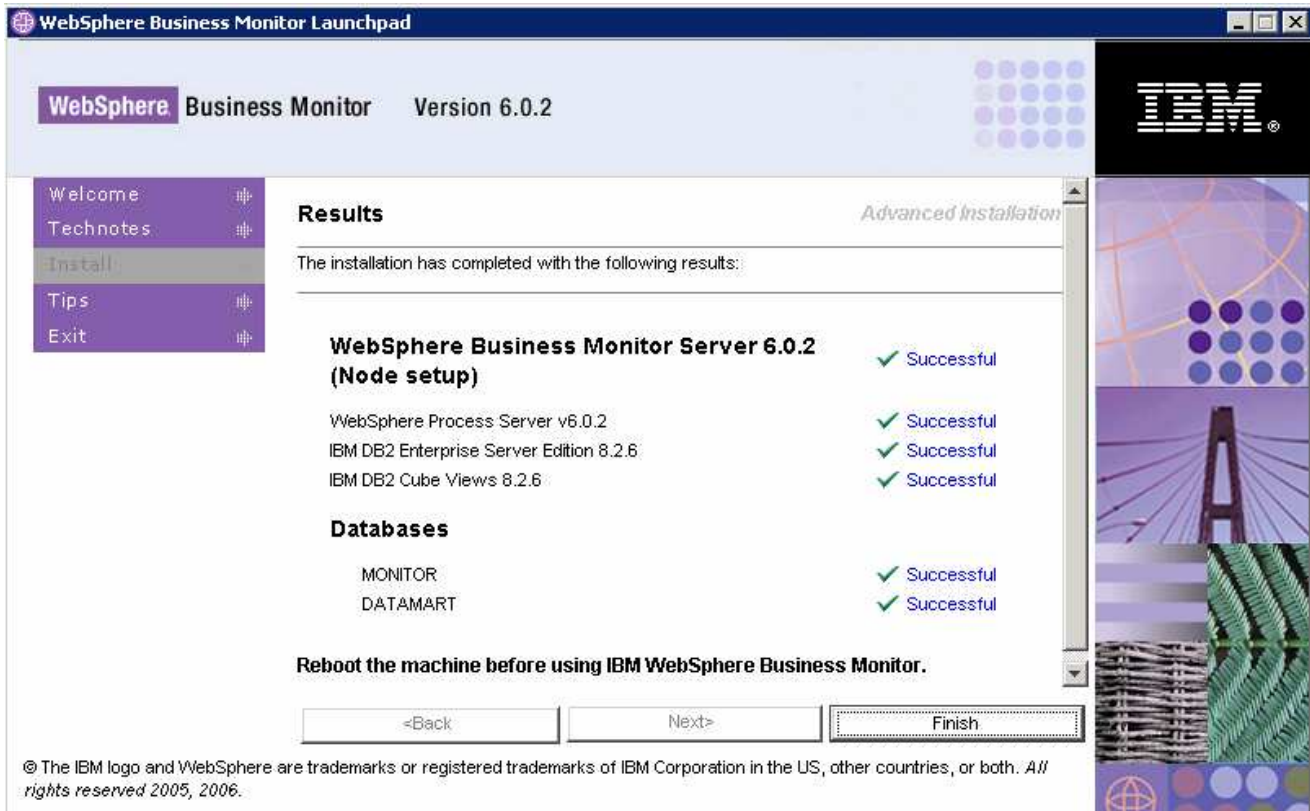


__ j. Once the installation is complete, the Installer checks the status of the Monitor Server installation as follows:

IBM WEBSHERE BUSINESS MONITOR V6.0.2 – LAB EXERCISE

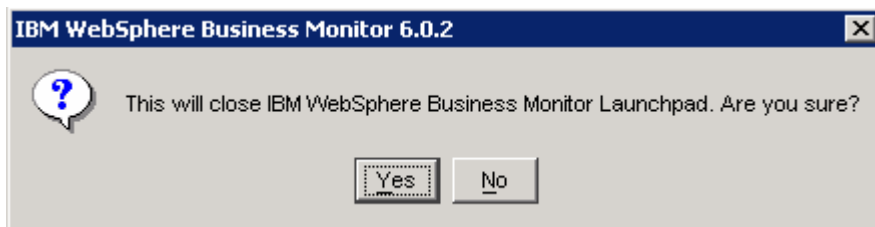


___ 23. Review the **Result** Summary and ensure all the software components listed are successfully installed



___ 24. Click **Finish**

___ 25. Click **Yes**



___ 26. **Reboot** the machine

___ 27. The installation of Monitor Server and Monitor Databases is complete

Part 3: Preparing the Launchpad for Dashboard Server

In this section of the lab, the pre-requisite software required for the Dashboard Server installation will be obtained and extracted.

The following steps must be completed on the Dashboard Server machine:

Obtain the pre-requisite software and extract in such a way to create the correct on-disk structure for the Launchpad to run.

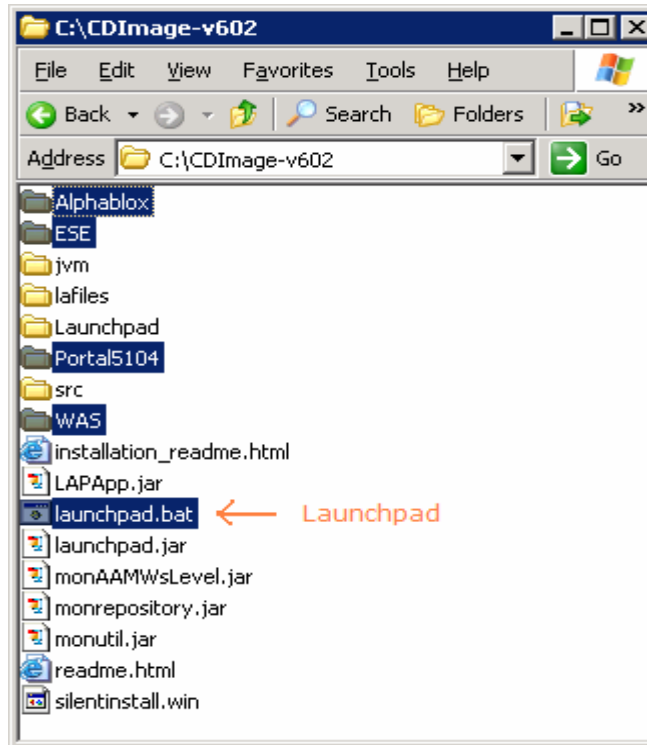
- ___ 1. The following are the installation files needed to install the WebSphere Business Monitor V6.0.2
 - ___ a. ESE_v826.zip (DB2 UDB ESE V8.2.6)
 - ___ b. Alphablox_v840.zip (Alphablox V8.4.0)
 - ___ c. WAS_v60217.zip (WebSphere Application Server V6.0.2.15)
 - ___ d. Portal_v5104.zip (WebSphere Portal Server V5.1.0.4)
 - ___ e. Monitor_v602.zip (WebSphere Business Monitor V6.0.2)

Note: Portal Server does not support WebSphere Process Server V6.0.2 and therefore it cannot be installed on the WebSphere Application Server that comes with the WebSphere Process Server V6.0.2 installation. A separate WebSphere Application Server V6.0.2.17 installation is required.

Note: WinZip versions before version 10 could have problems extracting the number of files or the directory structure depth from the source archive (.zip) files. Use unzip instead, which can be downloaded from the Internet at <http://www.info-zip.org/pub/infzip/>.

- ___ 2. Extract all of the .zip files into a directory called C:\CDImage-v602\ to create an on-disk image and confirm that the directory structure was extracted correctly; it should appear similar to the picture below

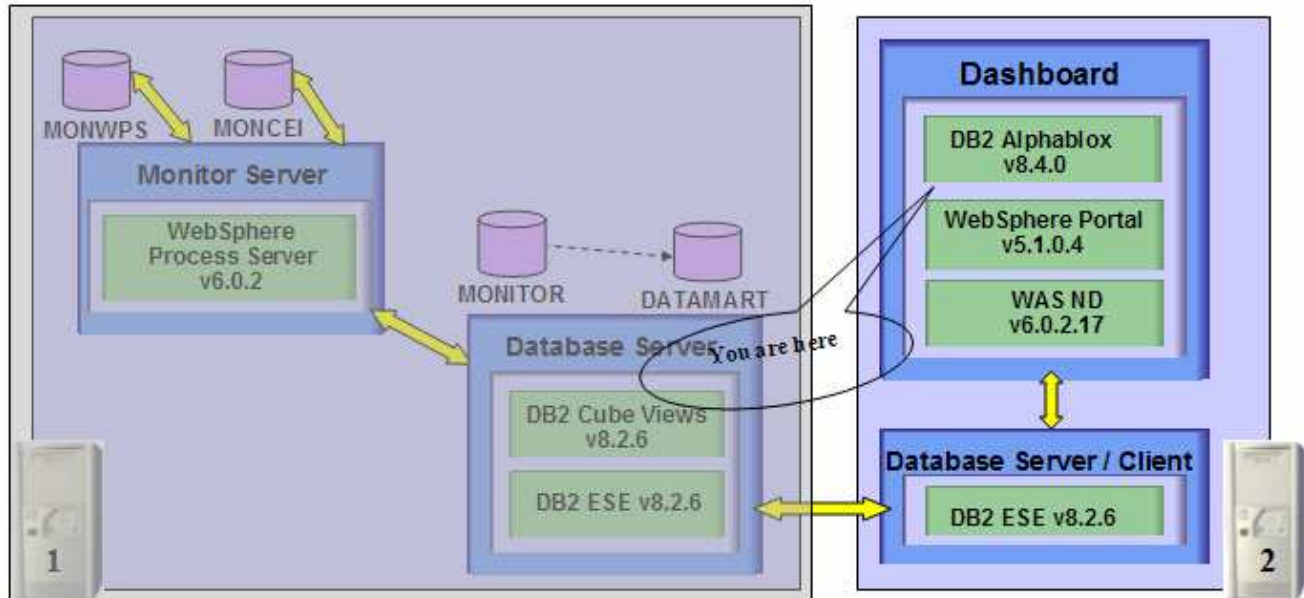
IBM WEBSHERE BUSINESS MONITOR V6.0.2 – LAB EXERCISE



Note: If using WinZip, a right-click on the .zip files selecting “**Extract here**” from the context menu produces the correct directory structure for the Monitor Launchpad to detect the pre-requisite software.

Part 4: Installing Dashboard server

This part of the lab shows you how to install the Dashboard Server and its supporting software (pre-requisites). The Launchpad program can install the pre-requisite software; however, the Launchpad program also detects the prerequisite software if they were pre-installed.



The Launchpad program expects the following for the WebSphere Application Server installation.

Create WebSphere Application Server user

- The WebSphere Application Server user must be an Operating System user with administrative privileges
- The existing **Administrator** user ID can be used as a WebSphere Application Server user
- If you plan to use a user other than Administrator, create a user (for example **wasadmin**) and ensure the user is a member of **Administrators** group.

The following pre-requisite is not mandatory but if you want to:

Note: The Launchpad creates the DB2 user and groups if they do not exist during the DB2 installation.

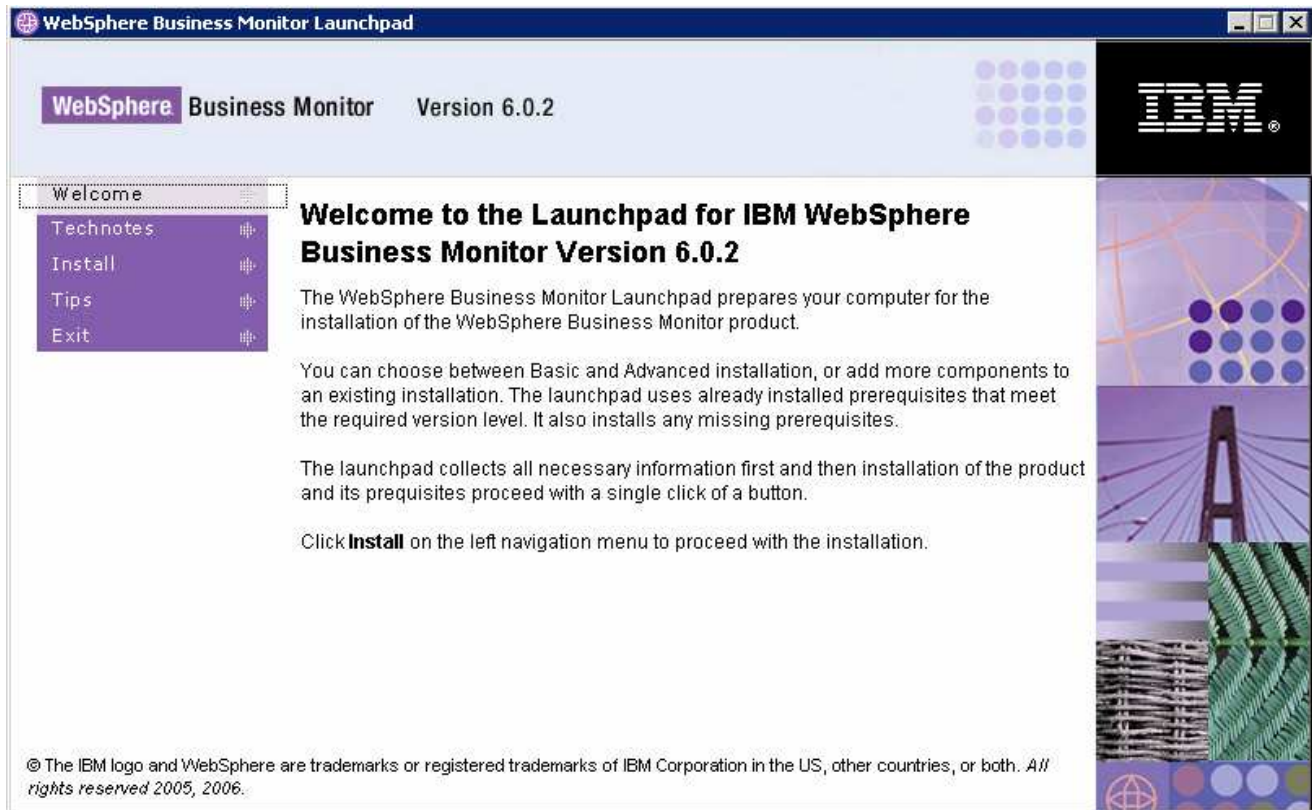
Create DB2 Administrator user, DB2 Administrator groups

- The DB2 Administrator user must be an Operating System user with administrative privileges
- The DB2 Administrator user must be less than or equal to 8 characters
- Create two groups DB2ADMINS and DB2USERS
- Create a user (for example **db2admin**) and ensure the user is a member of **Administrators** and **DB2ADMINS** groups

Follow the instruction below to complete the installation of the Dashboard Server

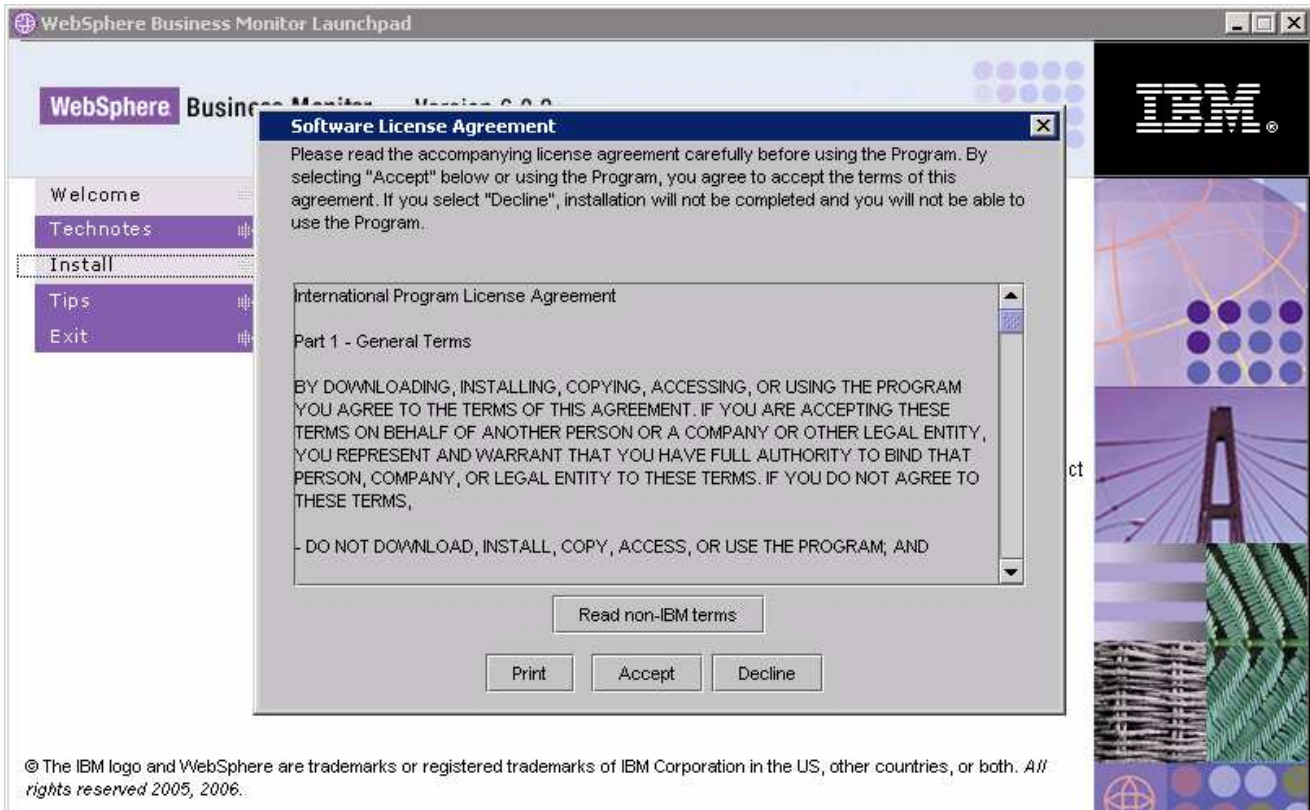
IBM WEBSHERE BUSINESS MONITOR V6.0.2 – LAB EXERCISE

1. From the directory where all the pre-requisites and the Monitor driver are extracted (Ex:- C:\CDImage-v602\), double click on the **launchpad.bat** to run the Launchpad



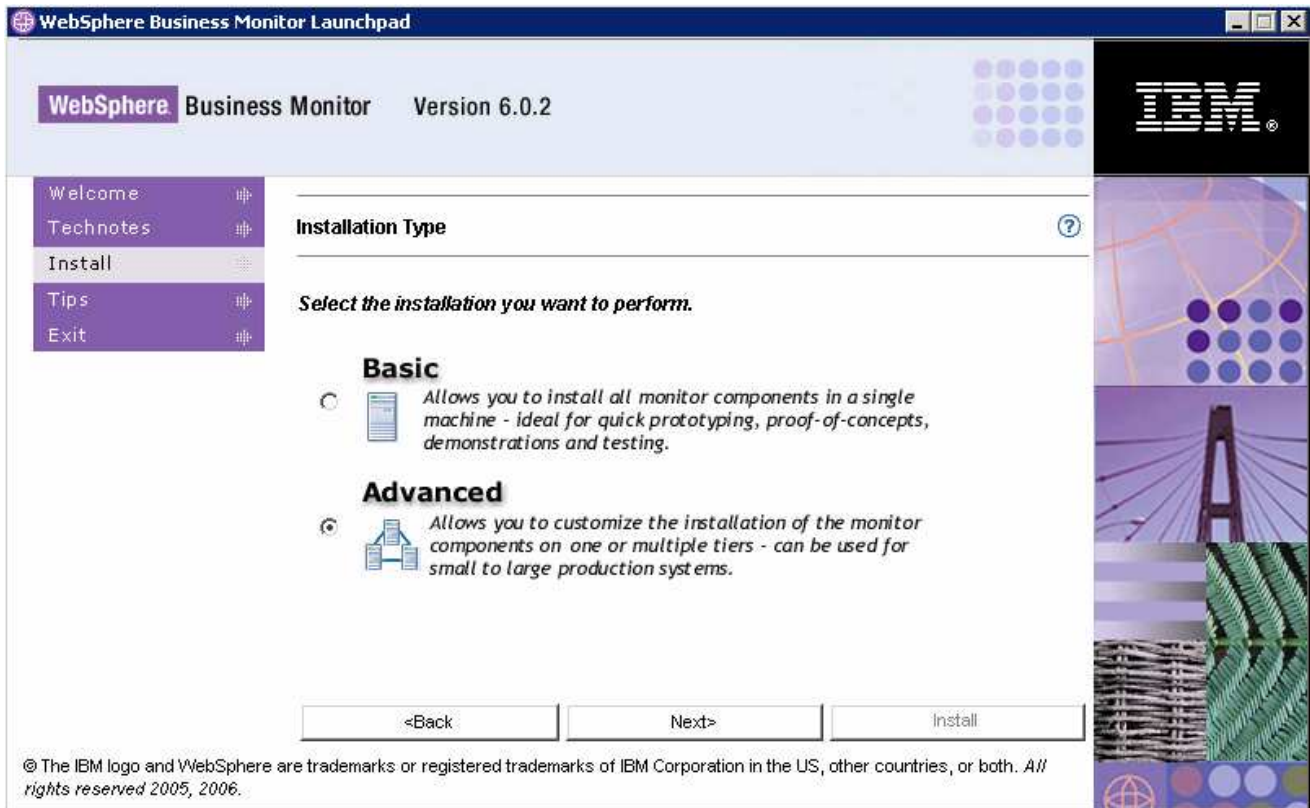
2. From the welcome screen click on **Install**
3. Read the license agreement and accept the agreement

IBM WEBSHERE BUSINESS MONITOR V6.0.2 – LAB EXERCISE



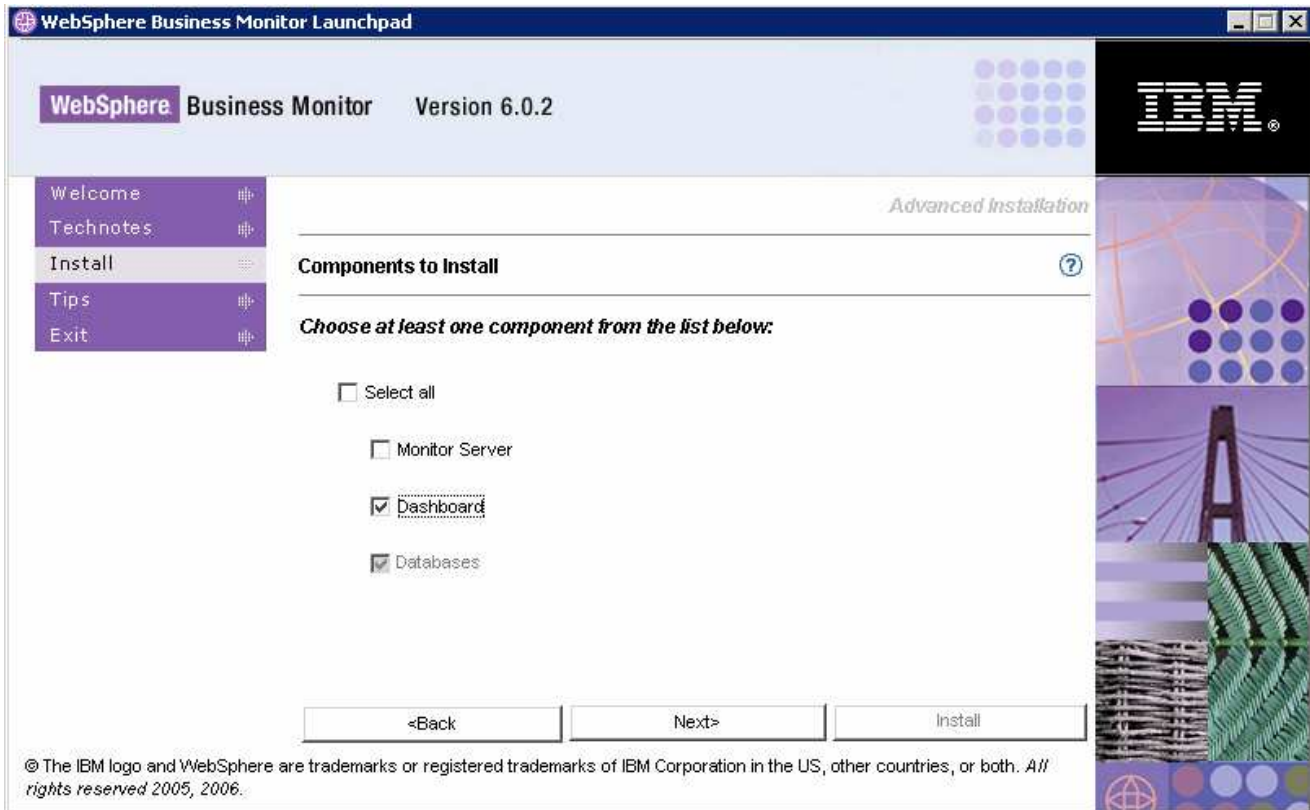
- ___ 4. Click the **Accept** button to continue
- ___ 5. In the following screen, select the **Installation Type** as **Advanced**

IBM WEBSHERE BUSINESS MONITOR V6.0.2 – LAB EXERCISE



- ___ 6. Click **Next**
- ___ 7. In the following **Components to Install** screen, ensure that only the check boxes next to **Dashboard** and **Databases** is selected

IBM WEBSHERE BUSINESS MONITOR V6.0.2 – LAB EXERCISE

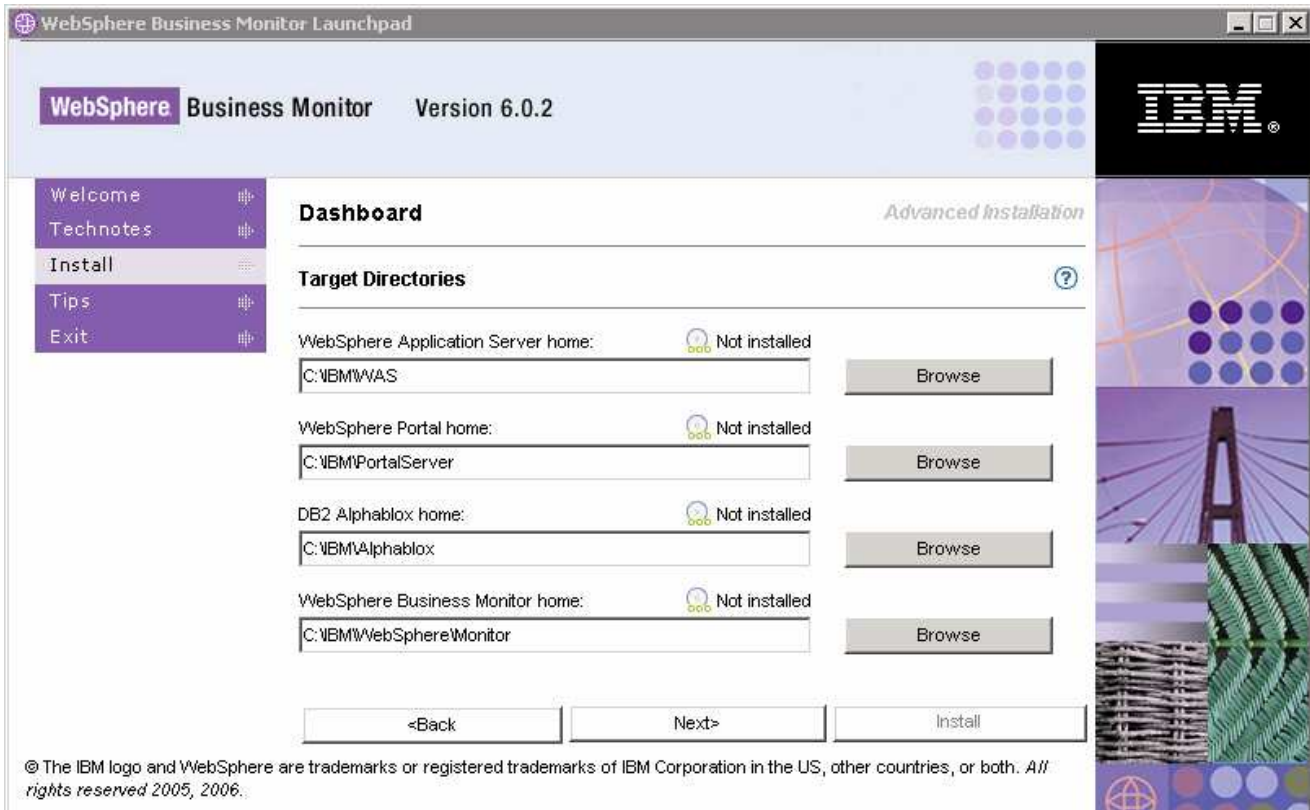


___ 8. Click **Next**

___ 9. Verify the following **Dashboard Target Directories** screen

- WebSphere Application Server home : **C:\IBM\WAS**
- WebSphere Portal home : **C:\IBM\PortalServer**
- DB2 Alphablox home : **C:\IBM\Alphablox**
- WebSphere Business Monitor home : **C:\IBM\WebSphere\Monitor**

IBM WEBSHERE BUSINESS MONITOR V6.0.2 – LAB EXERCISE

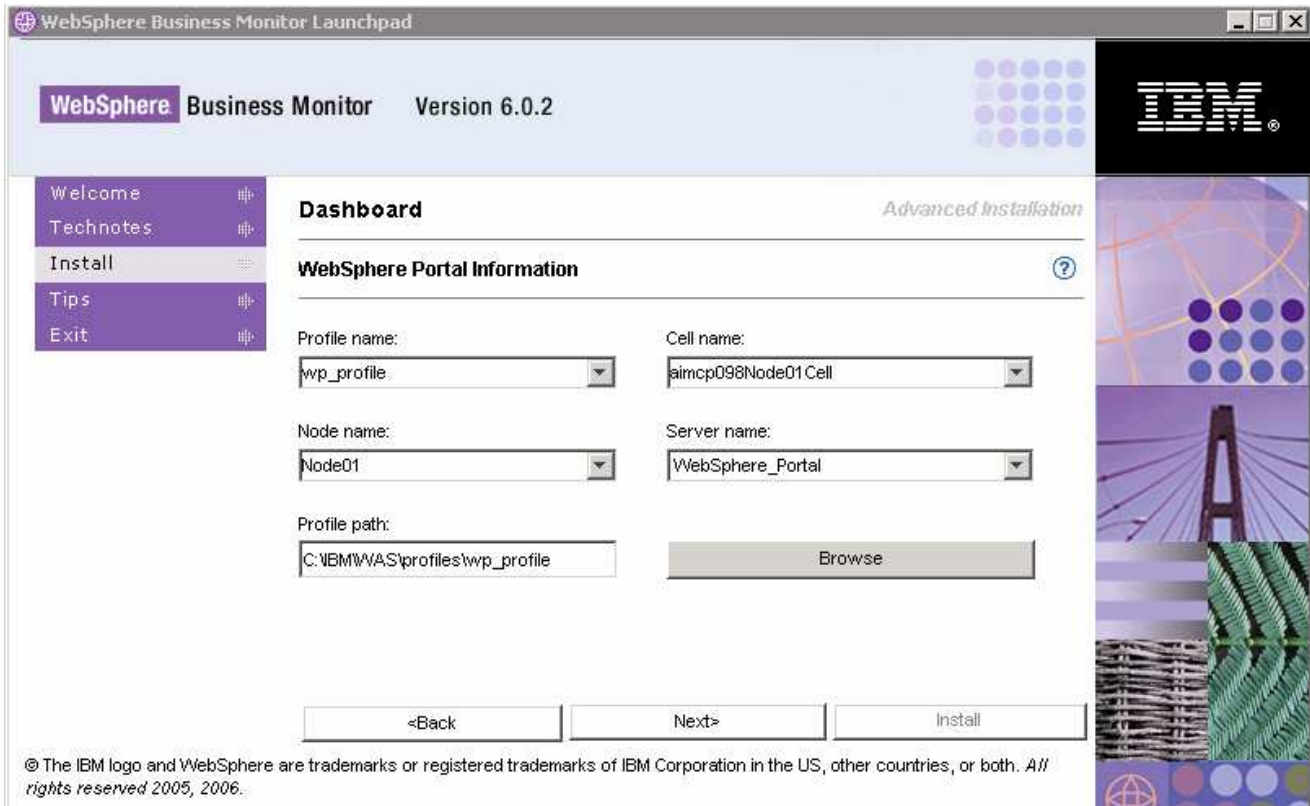


___ 10. Accept the defaults and click **Next**

___ 11. In the following **WebSphere Portal Information** screen:

- a) Review the **Profile name, Cell Name, Node Name** and **Server Name**
 - Profile name : **wp_profile**
 - Cell name : **hostnameNode01Cell** (depends on the system hostname)
 - Node name : **Node01**
 - Server name : **WebSphere_Portal**
- b) Profile path : **C:\IBM\WAS\profiles\wp_profile**

IBM WEBSHERE BUSINESS MONITOR V6.0.2 – LAB EXERCISE



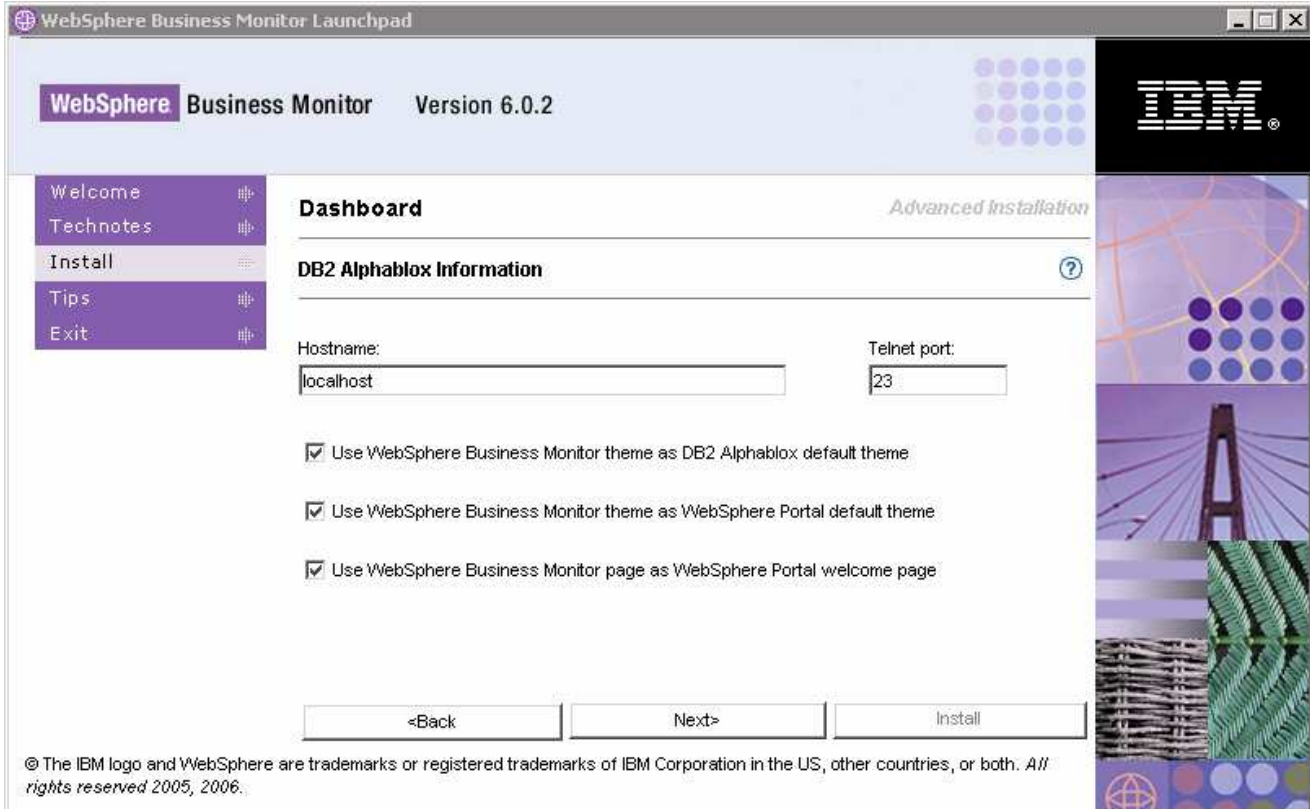
___ 12. Click **Next**

___ 13. In the following **DB2 Alphablox Information** screen, accept the defaults for the **Hostname** and **Telnet port**. Ensure all the check boxes are selected

___ a. Hostname : **localhost** (or the fully qualified hostname)

___ b. Telnet port : **23** (modify if this port number is being used by another process)

IBM WEBSHERE BUSINESS MONITOR V6.0.2 – LAB EXERCISE



___ 14. Click **Next**

___ 15. In the following screen, provide the **WebSphere Application Server Admin ID**, **WebSphere Portal Admin ID** and **DB2 Alphablox Admin ID** with their respective **Passwords**

- WebSphere Application Server Admin ID / Password : **Administrator/xxxxxxxxxx**
- WebSphere Portal Admin ID / Password : **wpsadmin/wpsadmin** (accept default)
- DB2 Alphablox Admin ID / Password : **admin/password** (accept default)

Note: The **WebSphere Application Server User** is an Operating System specific user and it is mandatory that the user be pre-existing and that it be part of the **Administrators** group



Note: The **WebSphere Portal Admin** and **DB2 Alphablox Admin** users and passwords default to **wpsadmin/wpsadmin** and **admin/password**. For this exercise, it is recommended that accept the defaults.

IBM WEBSHERE BUSINESS MONITOR V6.0.2 – LAB EXERCISE

WebSphere Business Monitor Launchpad

WebSphere Business Monitor Version 6.0.2

Dashboard *Advanced Installation*

User name and Password ?

WebSphere Application Server Admin ID: Administrator Password: *****

WebSphere Portal Admin ID: wpsadmin Password: *****

DB2 Alphablox Admin ID: admin Password: *****

<Back Next> Install

© The IBM logo and WebSphere are trademarks or registered trademarks of IBM Corporation in the US, other countries, or both. All rights reserved 2005, 2006.

___ 16. Click **Next**

___ 17. In the following **Database setup** screen, for the **MONITOR Database setup**:

- ___ a. Select the **MONITOR** tab
- ___ b. Select the check box next to **Configure**
- ___ c. Select the radio button next to **Type 2** for the **JDBC Driver Type**

Note: There are two types of **JDBC Driver Types** that can be chosen: **Type 2** and **Type 4**.

For Type 2, the native-API/partly JAVA driver communicates directly with the database server; therefore requiring some binary code on the client machine.

For Type 4, the native-protocol/all JAVA driver converts JDBC calls into the vendor-specific database management system (DBMS) protocol so that the client applications can communicate directly with the database server. Type 4 drivers are completely implemented in JAVA to achieve platform independence and eliminate deployment administration issues.

___ d. Enter the DB2 **username** and **password** of the **Local** database server

- 1) User name : **db2admin**
- 2) Password : **xxxxxxx**
- 3) Confirm Password : **xxxxxxx**

___ e. Select the radio button next to **Remote**

IBM WEBSHERE BUSINESS MONITOR V6.0.2 – LAB EXERCISE

1) Enter the DB2 **username** and **password** of the **Remote MONITOR** database

Note: Ensure that the DB2 Admin user of the Remote Database server is used here as the Launchpad catalogs the Remote Monitor Databases in this scenario.

a) User name : **db2admin**

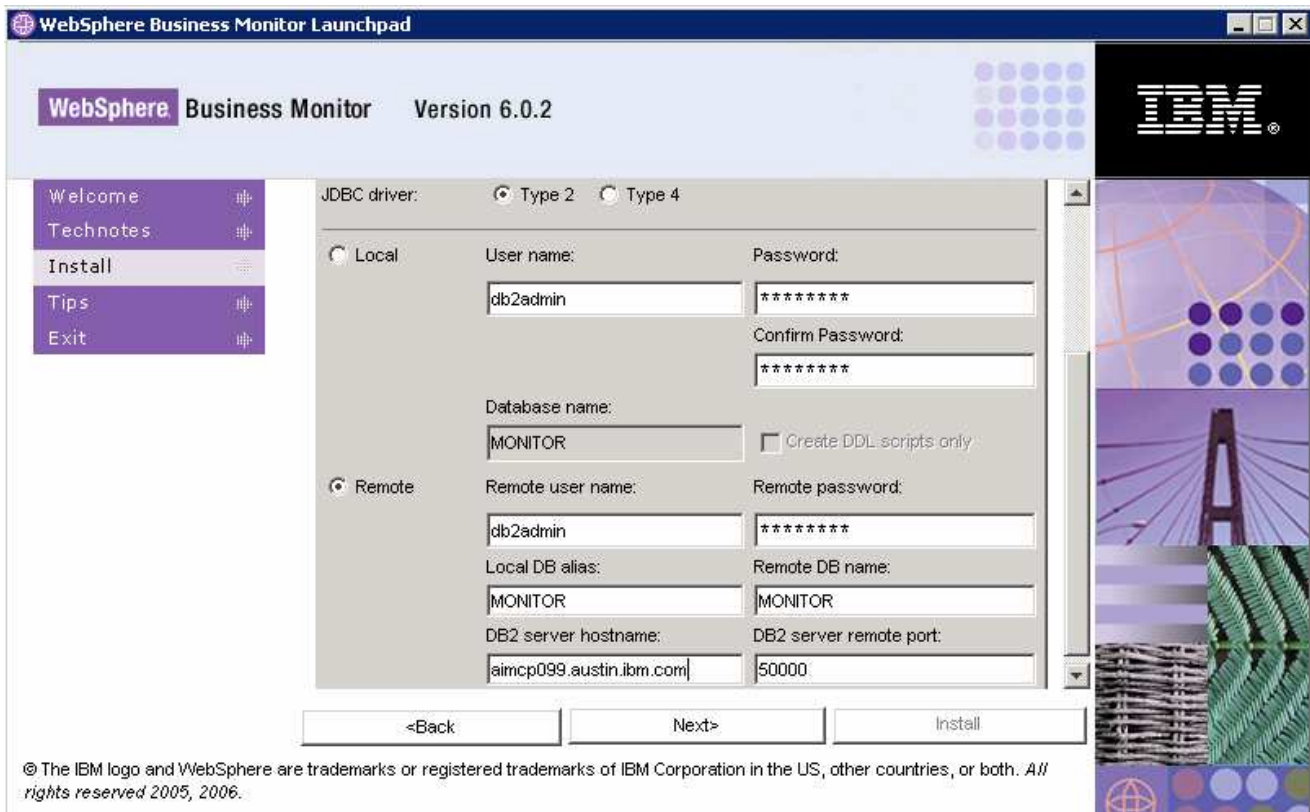
b) Password : **xxxxxxx**

2) Enter the Local Monitor DB Alias name and the Remote Monitor DB name:

a) Local DB alias : **MONITOR**

b) Remote DB name : **MONITOR**

___ f. Enter the correct **DB2 server hostname** (fully qualified remote Database Server hostname) and **DB2 server port (50000)**



___ 18. In the current **Database setup** screen, for the **DATAMART Database setup**:

___ a. Select the **DATAMART** tab

___ b. Select the check box next to **Configure**

___ c. Select the radio button next to **Type 2** for the **JDBC Driver Type**

___ d. Enter the DB2 **username** and **password** of the **Local** database server

1) User name : **db2admin**

IBM WEBSPHERE BUSINESS MONITOR V6.0.2 – LAB EXERCISE

2) Password : **xxxxxxxx**

3) Confirm Password : **xxxxxxxx**

__ b. Select the radio button next to **Remote**

1) Enter the DB2 **username** and **password** for the **Remote DATAMART** database

Note: Ensure that the DB2 Admin user of the Remote Database server is used here as the Launchpad catalogs the Remote Monitor Databases in this scenario.

a) User name : **db2admin**

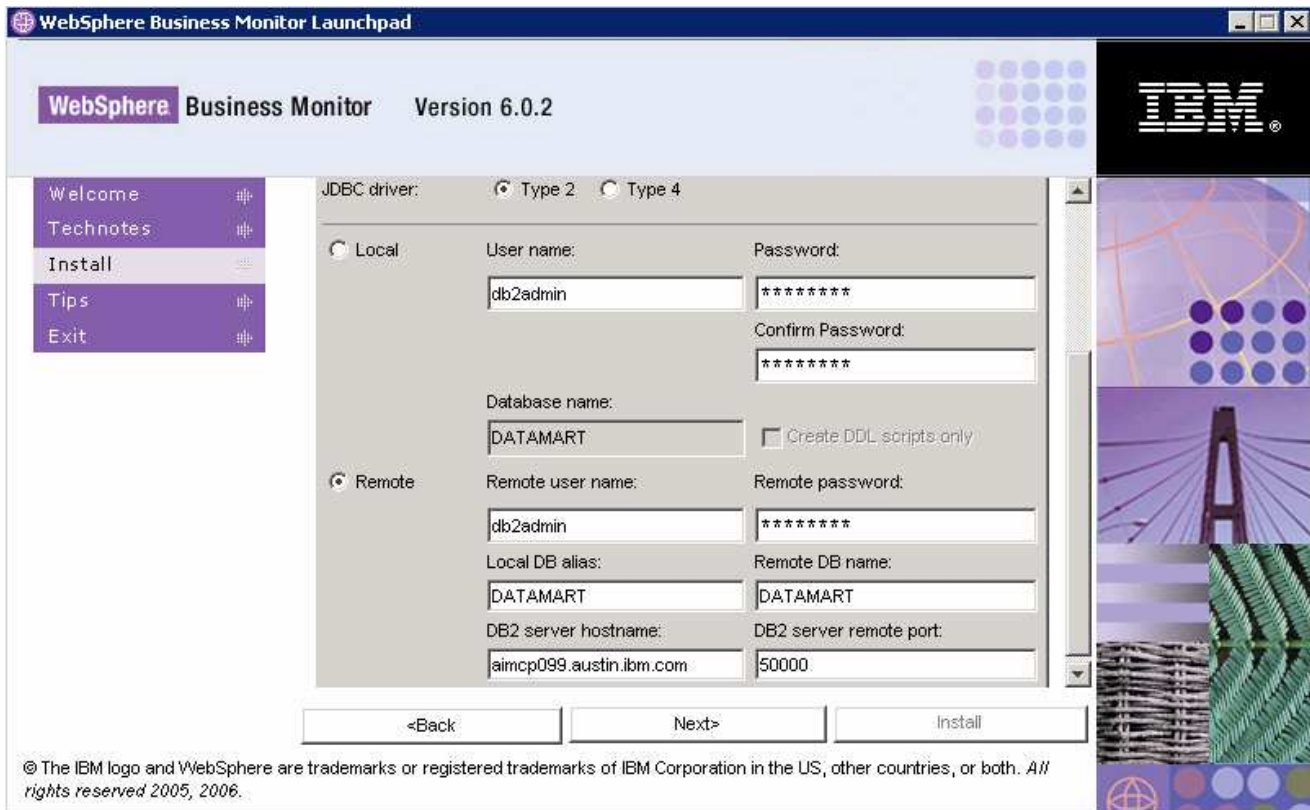
b) Password : **xxxxxxxx**

__ c. Enter the Local Datamart DB Alias name and the Remote Datamart DB name

a) Local DB alias : **DATAMART**

b) Remote DB name : **DATAMART**

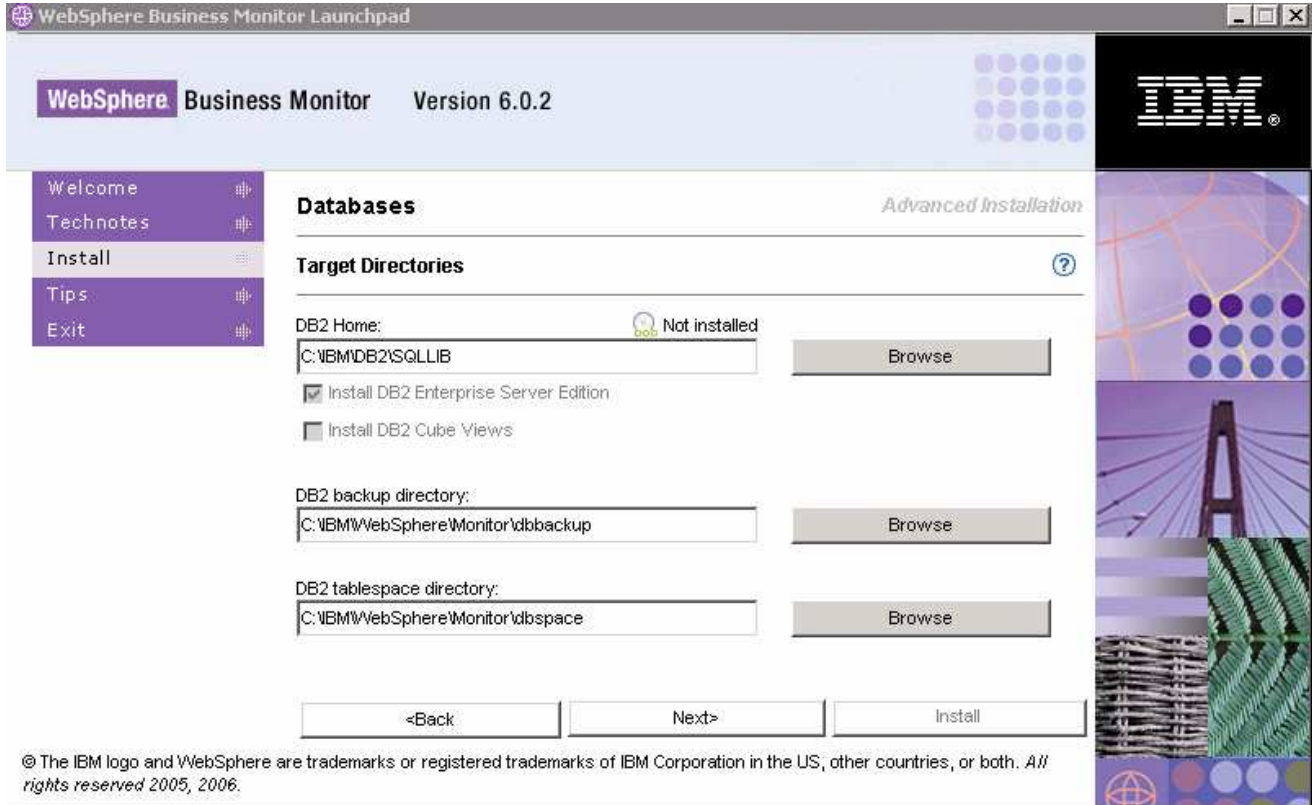
__ d. Enter the correct **DB2 server hostname** (fully qualified Database Server hostname) and **DB2 server remote port (50000)**



19. Click **Next**

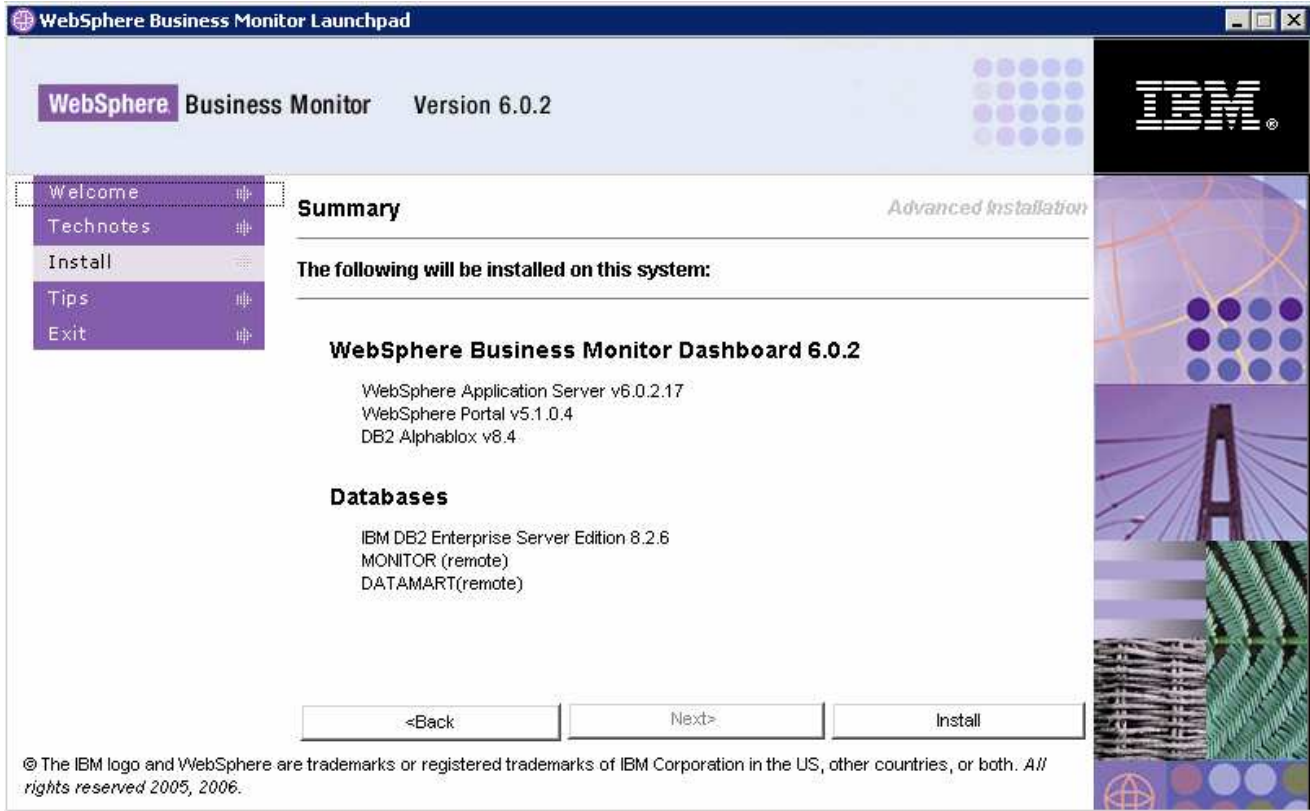
IBM WEBSPHERE BUSINESS MONITOR V6.0.2 – LAB EXERCISE

- ___ 20. Verify the following **Database Target Directories** screen
 - ___ a. DB2 Home : **C:\IBM\DB2\SQLLIB**
 - ___ b. Install DB2 Enterprise Server Edition : **Selected** (defaulted and not available)
 - ___ c. Install DB2 Cube Views : **un-selected** (defaulted and not available)
 - ___ d. DB2 backup directory : **C:\IBM\WebSphere\Monitor\dbbackup**
 - ___ e. DB2 tables pace directory : **C:\IBM\WebSphere\Monitor\dbspace**

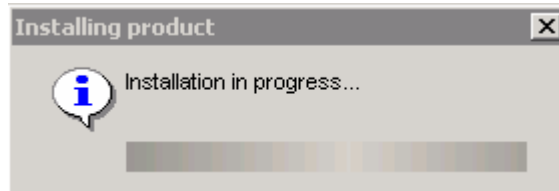


- ___ 21. Accept the defaults and click **Next**
- ___ 22. Review the Summary screen and click **Install**

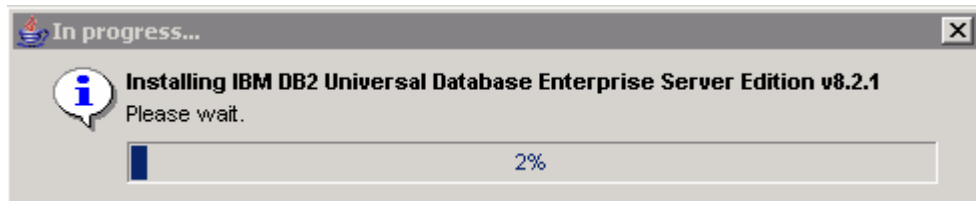
IBM WEBSPHERE BUSINESS MONITOR V6.0.2 – LAB EXERCISE



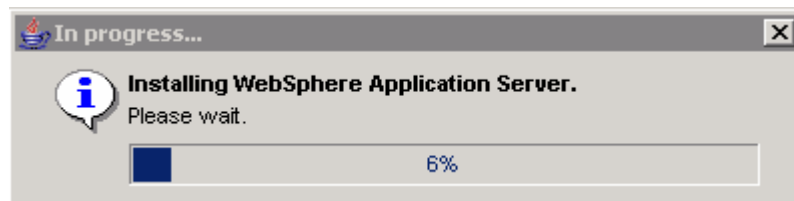
___ 23. The installation progresses with out interruption in the following **sequence** :



___ a. DB2 Installation Progress. This takes about 5 minutes to complete

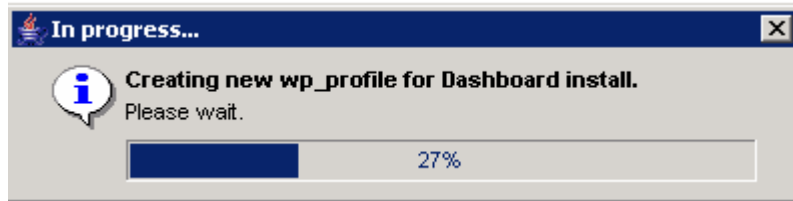


___ b. WebSphere Application Server Installation progress. This should take about 12 minutes to complete

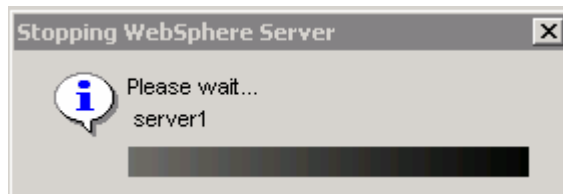


IBM WEBSHERE BUSINESS MONITOR V6.0.2 – LAB EXERCISE

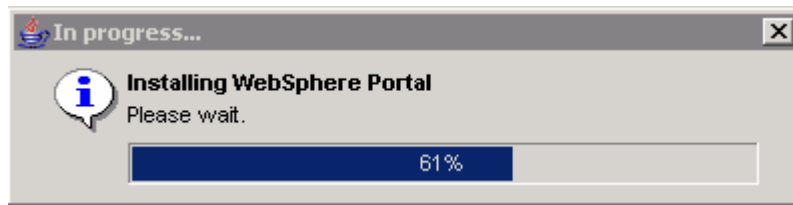
- ___ c. A new **wp_profile** creation progresses for Portal Server (Dashboard Install). This should take about 5 minutes to complete



- ___ d. Once the **wp_profile** creation is complete, the Launchpad stops the WebSphere Application server making way for Portal Server installation



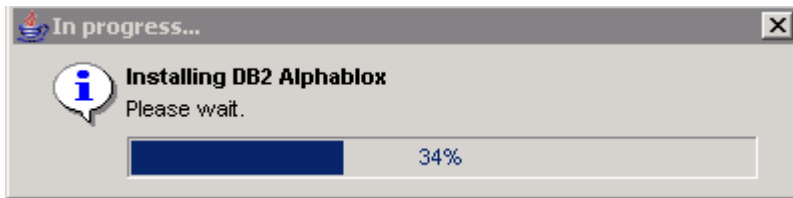
- ___ e. WebSphere Portal Server Installation progresses. This should take about 45 minutes to complete



- ___ f. Once the Portal Server installation is complete, the Launchpad stops the WebSphere Application server making way for DB2 Alphablox installation

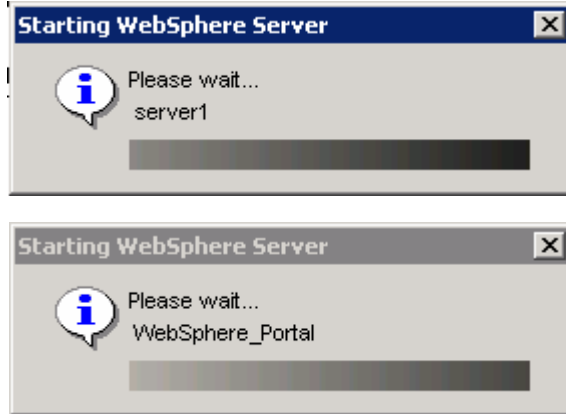


- ___ g. DB2 Alphablox Installation Progress. This should take about 4 minutes to complete



- ___ h. Once the DB2 Alphablox installation is complete, the Launchpad starts the WebSphere Application server and the WebSphere Portal Server as follows:

IBM WEBSHERE BUSINESS MONITOR V6.0.2 – LAB EXERCISE

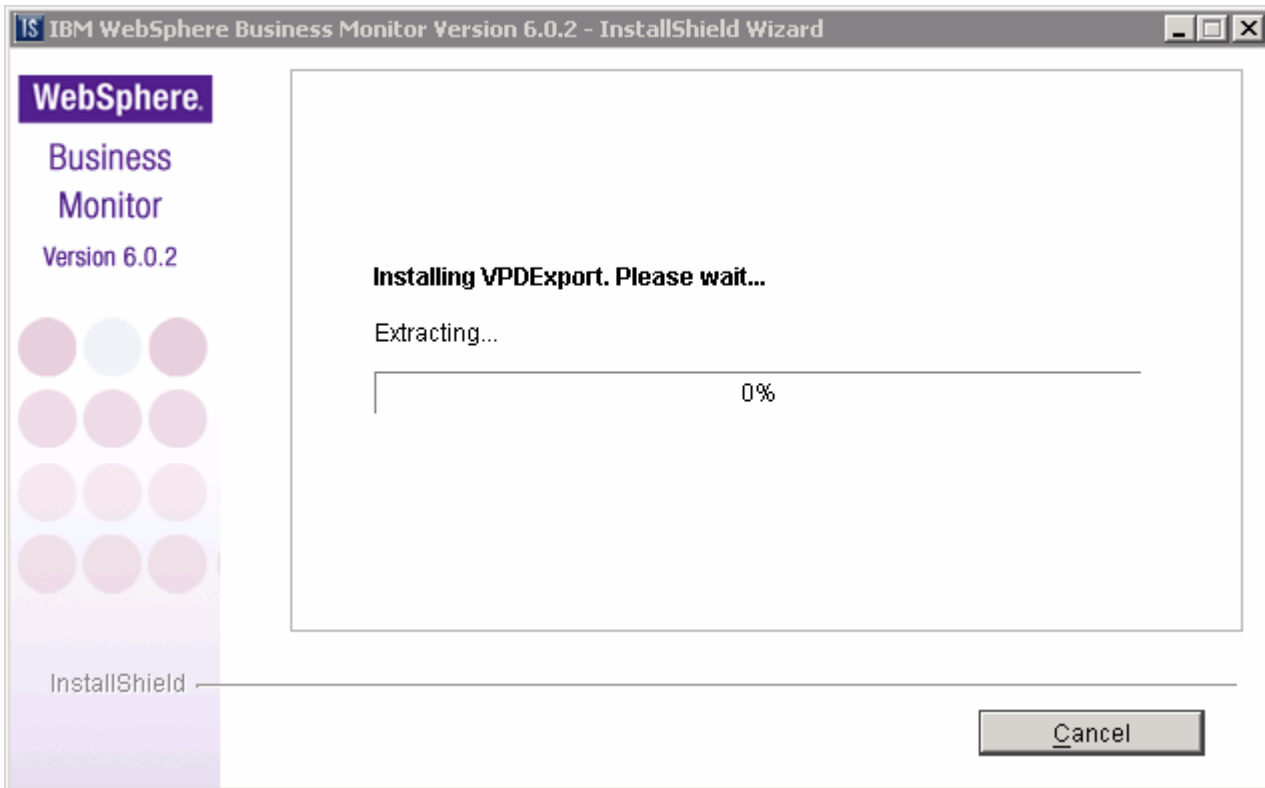


Note: Once the DB2 Alphablox installation is complete, the installation wizard is automatically launched to install the monitor server components: the VpdExport and catalog the remote Monitor databases, MONITOR and DATAMART.

- __ i. The installation progresses with the VpdExport component which holds the installation information of the monitor server components

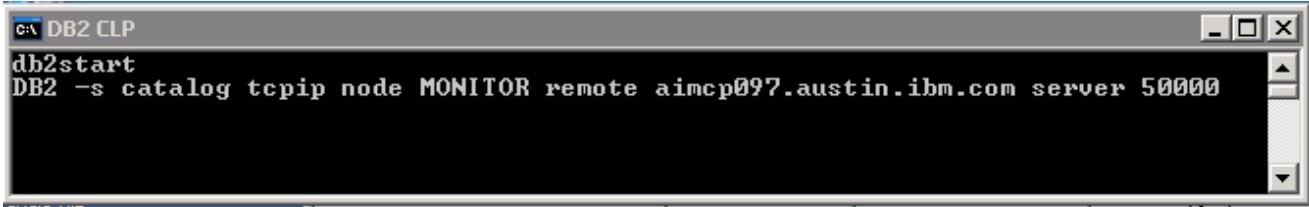
Note: VpdExport is an InstallShield tool where the Monitor Install and Uninstall is recorded and maintained as a database. VpdExport is installed when the first Monitor feature is installed and uninstalled when the last Monitor feature is uninstalled.

VpdExport is located at C:\Program Files\Common Files\InstallShield\Universal\Common\Gen2_vpddb

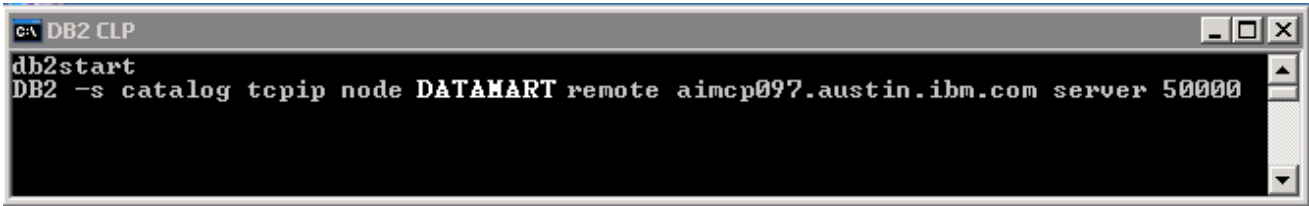


- __ j. Cataloging MONITOR Database. This should take less than a minute

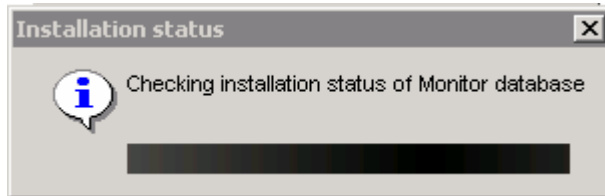
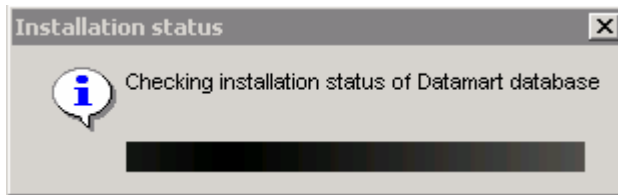
IBM WEBSHERE BUSINESS MONITOR V6.0.2 – LAB EXERCISE



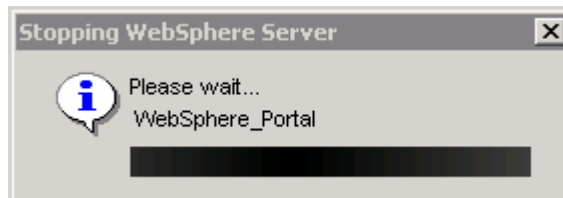
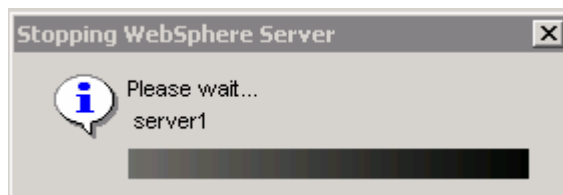
__ k. Cataloging DATAMART Database. This should take a few seconds



__ l. The installer checks the status of the cataloged Remote Monitor databases as follows:



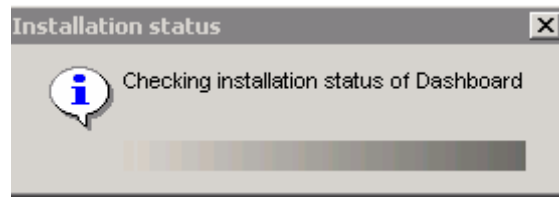
__ m. Once the Database status check is complete, the installer stops WebSphere Application Server and Portal Server to prepare for the Dashboard installation and is launched again



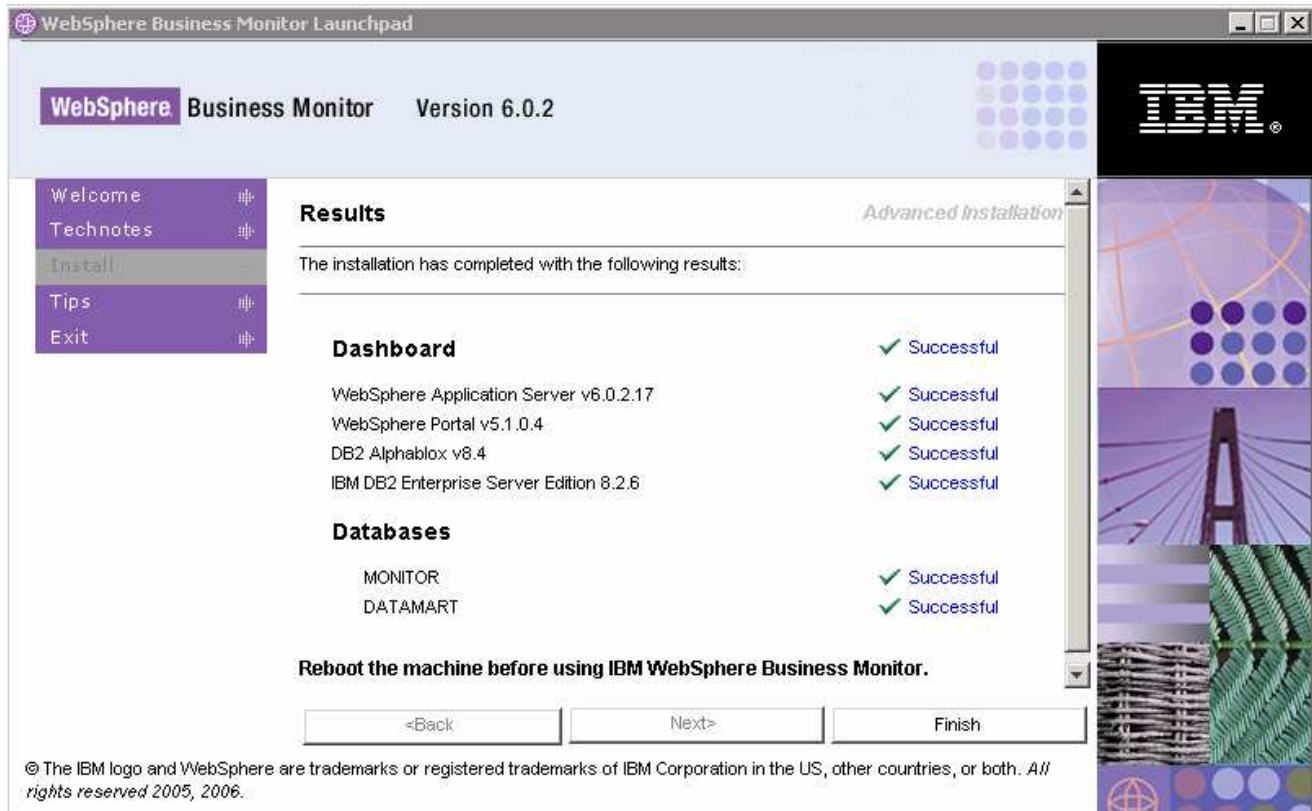
Note: Once the Remote Monitor Database catalog is complete, the installation wizard launches itself automatically to install the Dashboard component.

IBM WEBSHERE BUSINESS MONITOR V6.0.2 – LAB EXERCISE

___ 24. The Installer checks the status of the Dashboard installation as follows:

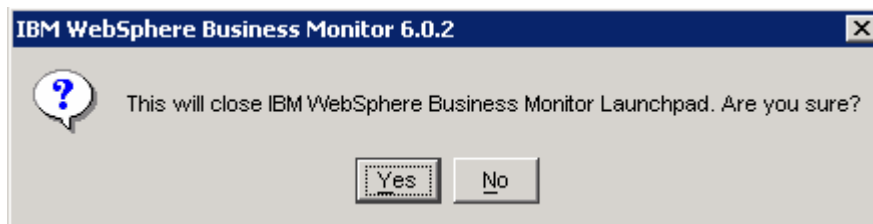


___ 25. Review the **Result** Summary and ensure all the software components listed are successfully installed



___ 26. Click **Finish**

___ 27. Click **Yes**



___ 28. **Reboot** the machine

___ 29. The installation of the Dashboard Server is complete

What you did in this exercise

You obtained the Monitor 6.0.2 drivers and pre-requisites, extracted them to create an on-disk image making it easy for the Launchpad to run. You used the Launchpad program to install all the pre-requisite software, installed Monitor Databases and Monitor Server on one machine and finally installed Dashboard Server on the second machine.

Appendix 1: Uninstalling WebSphere Business Monitor and its prerequisites

Monitor & Database Server Machine

From the Windows Control Panel's Add/Remove Programs utility, follow the uninstall sequence below:

- ___ 1. Uninstall the WebSphere Business Monitor components: the MONITOR and DATAMART Databases (un-catalogs), Monitor Server components
- ___ 2. Uninstall DB2 Cubes View 8.2.6
- ___ 3. Uninstall DB2 UDB ESE 8.2.6
- ___ 4. Uninstall WebSphere Process Server 6.0.2

Dashboard machine

- ___ 5. Uninstall the WebSphere Business Monitor components: the MONITOR and DATAMART Databases (uncatalogs) and the Dashboard Server
- ___ 6. Uninstall DB2 Alphablox
- ___ 7. Uninstall WebSphere Portal Server 5.1.0.4
- ___ 8. Uninstall WebSphere Application Server
- ___ 9. Uninstall DB2 UDB ESE 8.2.6

For more information on keeping the system clean after the unstill of the Monitor components and it prerequisites, visit the "[Appendix 2: Hints and troubleshooting](#)" section at the end of the document for more

Appendix 2: Hints and troubleshooting

Hints:

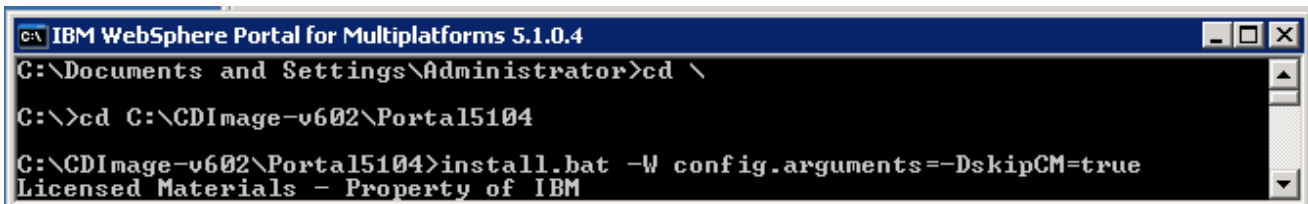
1. Remote Databases for WebSphere Process Server V6.0.2

WebSphere Business Monitor V6.0.2 Launchpad provides the capability to install the pre-requisite such as WebSphere Process Server V6.0.2 and select an option to use DB2 for Process Server databases. By selecting this option, the Process Server databases can only be created on the local Database Server. However, the Launchpad program doesn't provide the capability to create the databases used by the Process Server (the databases named EVENTS and WPRCSDB) to be remote databases. If planned to use Remote DB2 server for WebSphere Process Server databases, the instructions for the same are out of scope of this document.

2. To manually install the Portal Server V5.1.0.4, follow the instruction below:

The Monitor Launchpad installs the **lighter-weight version** of Portal V5.1.0.4, and to achieve the same by installing Portal Server out of the Monitor Launchpad;

Run the command: **install.bat -W config.arguments=-DskipCM=true**



```

IBM WebSphere Portal for Multiplatforms 5.1.0.4
C:\Documents and Settings\Administrator>cd \
C:\>cd C:\CDImage-v602\Portal5104
C:\CDImage-v602\Portal5104>install.bat -W config.arguments=-DskipCM=true
Licensed Materials - Property of IBM
  
```

3. Portal user ID and Alphablox user ID

Details: - The Portal Server user ID and Alphablox user ID are not Operating System specific or do not require to be re-defined in the system

Solution: - Accept the default user ID for the Portal Server and Alphablox. Also accept the Launchpad defaulted passwords for Portal Server and Alphablox.

4. Portal and Alphablox default passwords

Details: - The Launchpad defaults to the pre-defined passwords to their respective users.

Solution: - The default Portal password is **wpsadmin** and the default Alphablox password is **password**

5. Change Alphablox default password

Details: - When Launchpad installs Alphablox, the default for Alphablox user ID is 'admin' and password is 'password'. You can modify the password for existing user ID

Solution: - Open the Alphablox Admin page: Ex: - <http://localhost:9081/AlphabloxAdmin>. Login with default **user ID/password** and click on '**Administration**' tab and then '**Users**' tab. Select user ID '**admin**' then click '**Edit**' button. Provide new password for 'admin' user. Click **Save**

6. Create new user ID for Alphablox

Details: - New Alphablox user ID can be created from Alphablox Admin page

IBM WEBSHERE BUSINESS MONITOR V6.0.2 – LAB EXERCISE

Solution: - Open the Alphablox Admin page: Ex: - <http://localhost:9081/AlphabloxAdmin>. Login with default **user ID/password** and click on '**Administration**' tab and then '**Users**' tab. Click '**Create**' button then provide new user ID and password. Click **Save**

7. Select 'Create DB manually' option

Details: - If user uses the Launchpad to install Databases and select the option 'Create DB manually' on the Database setup panel, the Launchpad will only generate scripts and DDL scripts.

Solution: - Run the DDL scripts manually

Troubleshooting:

1. Useful files for debugging installation problems

Details: - When debugging installation problems, gather as much information as possible

Solution: - If you have a problem installing any of the Monitor components, include these files when you request assistance.

- All files in <MONOTOR_HOME>\install\logs
- The following files in the %TEMP% directory of the Administrator user

(C:\DOCUME~1\userid\LOCALS~1\Temp)

launchpad-monitor.log
 launchpad-Traces.log
 Mon_Install.rsp
 WbimInstall.log

- The Process Server log file: SystemOut.log

2. Monitor Databases install failed

Details: - If Launchpad displays the status of Databases install as '**Failed**' on the final **Result** panel

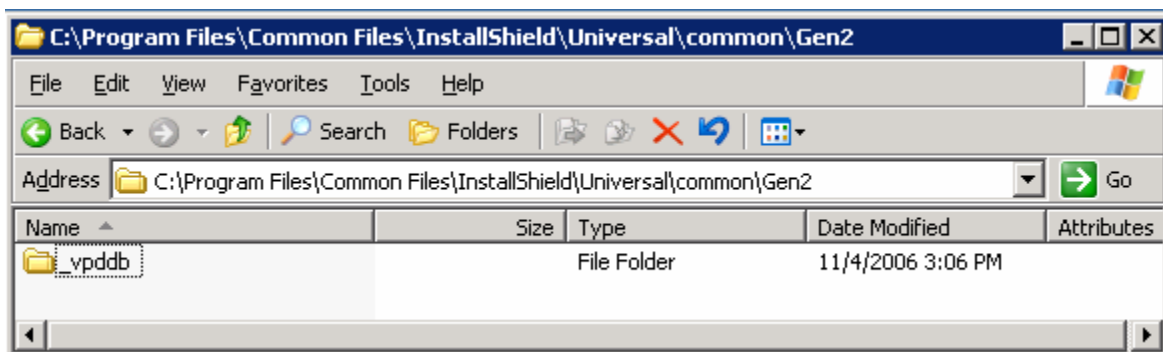
Solution: - Open DB2 Control Center and drop all Monitor databases

3. The Install Shield's vpd properties sometimes gets corrupted

Details: - If a monitor installation fails in an unexplained manner, the Install Shield product registry can get corrupted and you may need to clean things up.

Solution: -

- Find for the **Gen2** directory in C:\Program Files\Common Files\InstallShield\Universal\common\Gen2 and delete it



- Remove the Monitor registry entry in **HKEY_LOCAL_MACHINE → SOFTWARE → IBM**
- Remove the directory that Monitor is currently installed in
- If the Monitor databases are already installed, you need to drop them

IBM WEBSHERE BUSINESS MONITOR V6.0.2 – LAB EXERCISE

4. How to manually uninstall Monitor features

Details: - If the Monitor uninstaller fails, you can manually uninstall the Monitor features.

Solution: -

- e. On Windows, the path is C:\Program Files\Common Files\InstallShield\Universal\common\Gen2. On AIX, the path is /usr/lib/objrepos/InstallShield/Universal/common/Gen2
- f. Remove the Monitor registry entry in **HKEY_LOCAL_MACHINE → SOFTWARE → IBM**
- g. Remove the directory that Monitor is currently installed in
- h. Remove **install.vlf**. On Windows, the path is %WINDIR%. On AIX, the path is **/usr/lib/objrepos**

5. Debugging Monitor database creation problems

Details: - If the Monitor database creation fails, you will see this error message:
An error occurred and product installation failed. Look at the log file
C:\DOCUME~1\userid\LOCALS~1\Temp\WbimInstall.log for details

Solution: - Follow these steps to determine where the problem occurred.

- i. In WbimInstall.log, look for this line:
ProductException: (error code = 601; message="The execution of the bat file failed with a return code of 2")
- j. Go up 3 lines and you will see this line: "installing Bat File Test Condition PA (bat_test_xxx)".
- k. The text in parentheses tells you what script was running. Each script has log files associated with it.
- l. Here are the possible text values and the log files associated with them.

bat_test_repository - db2CreateMonDBOut.log, db2CreateMonDBErr.log
bat_test_datamart - db2CreateDatamartOut.log, db2CreateDatamartErr.log
bat_test_repos_catalog1 - catalogMonDBOut.log, catalogMonDBErr.log
bat_test_datamart_catalog - catalogDatamartOut.log, catalogDatamartErr.log
- m. The log files will tell you why the database creation failed

6. Debugging Monitor JDBC Data Sources in WebSphere Process Server

Details: - The Monitor install finishes and the JDBC data sources return an error when tested in the Administrative Console.

Solution: - It is possible that there may have been a DB2 node named either MONITOR or DATAMART in your local DB2 instance. If this is the case, you need to un-catalog the node and install again. To check for this problem, open a DB2 Command Window and type "db2 list node directory". If the results show a node with the name MONITOR or DATAMART, delete it with the command "db2 delete node MONITOR".

7. WebSphere Process Server fails while installing through Launchpad due to existing databases (local database server)

A WebSphere Process Server stand-alone profile uses two databases, one for its own internal use and the other for CEI events. A WebSphere Process Server Deployment Manager profile only uses the internal database. If you select to use DB2 for your WebSphere Process Server databases by selecting the "Use

IBM WEBSHERE BUSINESS MONITOR V6.0.2 – LAB EXERCISE

DB2 UDB for WebSphere Process Server databases" check box, you must make sure the databases that the WebSphere Process Server profile will use do not already exist on your local DB2 instance. WebSphere Process Server uses the following database names when installed using Launchpad:

Stand-alone profile: MONWPS & MONCEI

Deployment Manager profile: MONDWPS

Solution:

1) Drop the databases needed by WebSphere Process Server, clean up your WebSphere Process Server installation, and try again

or

2) Clean up your WebSphere Process Server installation, and run the WebSphere Process Server installation manually. This will allow you to specify your own database names. When WebSphere Process Server is installed with the required profile, run Monitor Launchpad again.

This page is left intentionally blank.